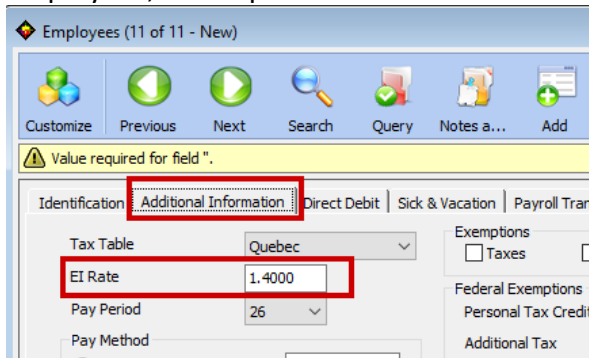


Employment insurance rate

For any questions regarding the operation of the employment insurance rate, please consult the information from Service Canada:

<https://www.canada.ca/en/employment-social-development/programs/ei/ei-list/reports/premium/rates2020.html>

The employment insurance rate must be indicated in the maintenance of your employees, in this place:



The full rate or reduced rate may apply depending on your reality. Refer to Service Canada for the rate you need to enter.

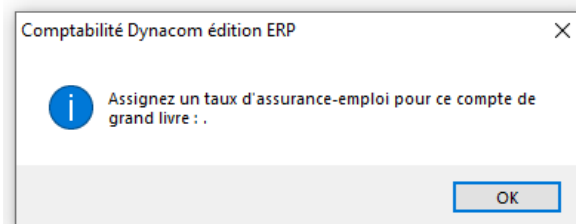
<https://www.canada.ca/en/employment-social-development/programs/ei/ei-list/ei-employers/premium-reduction-program.html>

MESSAGE: Assign an Employee Insurance rate for this ledger account

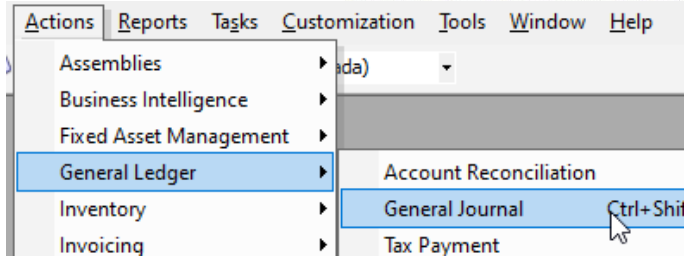
This message will be displayed if the Employee Insurance rate is not set during a general ledger entry.

Note: Dynacom will require you to assign an EI rate for only 2 general ledger accounts, either;

- *Federal tax payable*
- *Employee insurance to pay*



You will find this information under this menu:



For other accounts, the "Employment Insurance rate" column is not there.

Source: Rev - D00001 Currency: CAD - cad
 Date: 2020-11-25
 Comment: Dépôt direct et prélèvement bancaire - D00001
 Amount to affect to sales figures (Tax Report): 0.00

[Customize this grid](#)

General Ledger Account	Debit	Credit	Project	Comment
1000 - Banque		696.48		
1000 - Banque	696.48			

While for both accounts, you will see this column appear:

Source: tes Currency: CAD - cad
 Date: 2020-12-18
 Comment:
 Amount to affect to sales figures (Tax Report):

[Customize this grid](#)

General Ledger Account	Debit	Credit	Project	Comment	EI Rate
2020 - Impôt fédéral à payer					

NOTE: If the column has not been added automatically, it means that you have not yet created any employee (s) in your company.

IMPORTANT : If you don't make payroll with Dynacom, you will still need to create an employee to access a rate.