

1008 928 Beatty Street, Vancouver

\$749,900



One bed + flex + solarium located on the NE corner in THE MAX. The floor to ceiling windows fill this well appointed floor plan with light and provides a lovely cross breeze. The master bedroom is facing treelined Beatty Street providing a nice touch of nature to urban living. The open concept floor plan with in suite storage feels larger than the sqft. Location is central to transit, grocery, restaurants and shopping. The amenities mean you don't have to step outside this winter with 24hr concierge, pool/hot tub, fitness, steam/sauna, party and media room. This home comes with one parking & a storage locker.

KEY INFORMATION

MLS® R2410729

Residential Attached

Yaletown

1 Bedroom

1 Bathroom

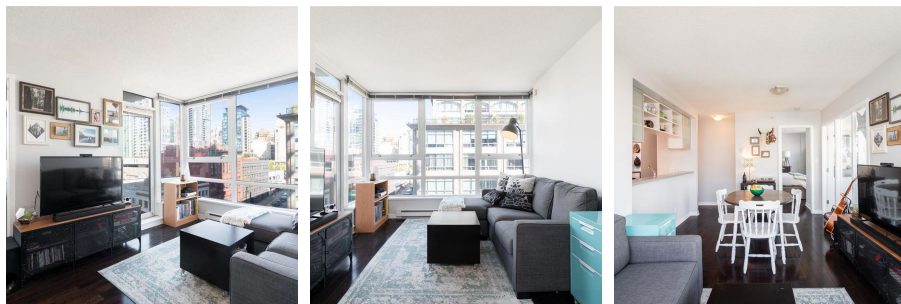
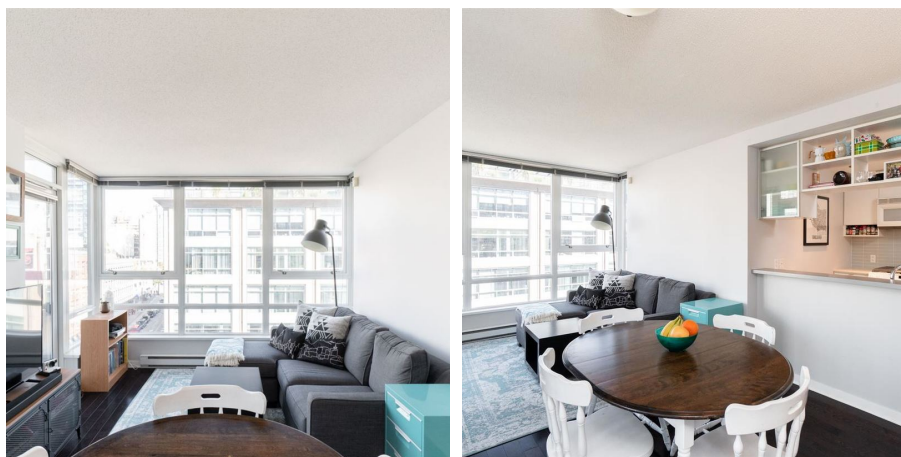
684 SF

\$375.02 Maintenance Fees

FEATURES

Year Built: 2005

Listed By: rennie & associates realty ltd.



Natalie Genest PREC*
604.928.7330
ngenest@rennie.com
rennie.com/nataliegenest

rennie