

# Ph3 608 Belmont Street, New Westminster

\$1,239,000



PENTHOUSE in the VICEROY, built by Bosa. Stunning 2 BR, 3 Bath with unobstructed majestic Views to welcome you home. Sleek, stylish designer finishes, contemporary cabinets, porcelain tile flooring, high-end appliances, quartz counter to mention a few. Exercise Centre, bike room and party room for your convenience. Walking distance to all shops, close to Douglas College and easy access to major roads. 2 side by side parking spaces and 1 storage locker included.

## KEY INFORMATION

MLS® R2404565

Residential Attached

Uptown

2 Bedrooms

3 Bathrooms

1,593 SF

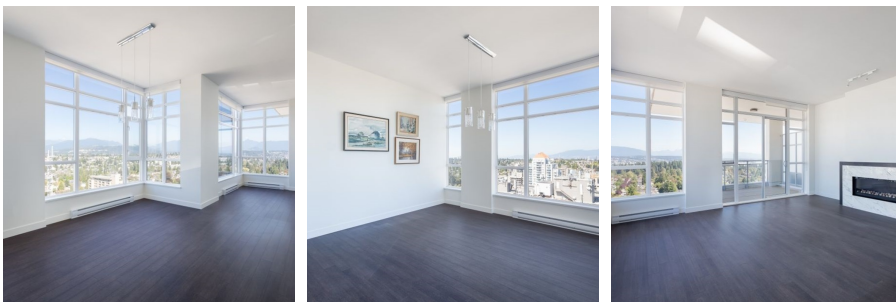
\$685.74 Maintenance Fees

## FEATURES

Year Built: 2013

Views: WATER & MOUNT BAKER

Listed By: rennie & associates realty ltd.



**Brandon Price** PREC\*  
604.765.9555  
bprice@rennie.com  
rennie.com/brandanprice

**rennie**