

66012 Park Avenue, Hope

\$499,900



LIFE AT THE LAKE! Just steps away from Kawkawa Lake. This 4 bed, 3 bath Rancher w/ bsmnt makes the perfect family home or vacation retreat. A spacious livingroom with a beautiful wood burning fireplace, sets the mood. Oak hardwood on both levels, The kitchen & dining area overlook a park-like, fully fenced backyard where you can watch the kids play for hours & enjoy the mountain views. A spacious master suite on the main level has a powder room. The lower level boasts a kitchen suite, 2 bedrooms & a full bath. RV Parking! Close to Othello tunnels & walking trails. Minutes to downtown Hope & schools.

KEY INFORMATION

MLS® R2403599

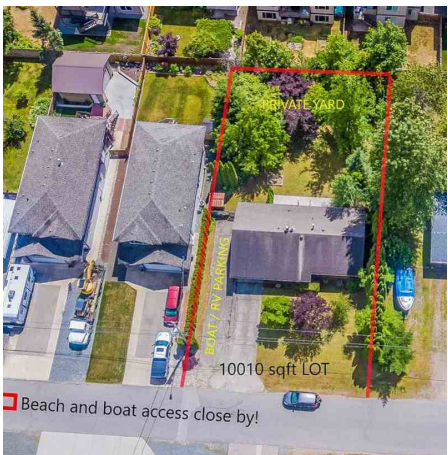
Residential Detached

4 Bedrooms

3 Bathrooms

2,372 SF

10,010 SF Lot

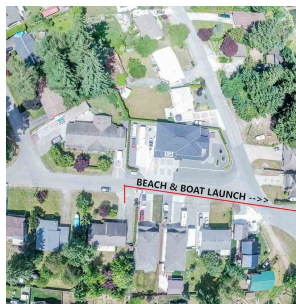


FEATURES

Year Built: 1981

Views: MOUNTAINS

Listed By: rennie & associates realty ltd.



Clarke Mallory PREC*
604.316.9917
cmallory@rennie.com
rennie.com/clarkemallory



Kim Mallory PREC*
604.316.3635
kmallory@rennie.com
rennie.com/kimmallory

rennie