

118 8511 Westminster Highway, Richmond

\$399,900



Welcome to Westhampton Court! Don't miss this almost 1,000 sq. ft. 2 Bed + 2 Bath quiet garden level home! This home offers spacious living/ dining room with wood burning fireplace leading to a private garden patio. Retreat to the separated bedrooms and 2 full bathrooms. There's plenty of room in the functional kitchen with loads of cabinets. Also very convenient with in-suite laundry. Located in the highly desirable Richmond Brighthouse neighbourhood, close to Richmond Public Market, Lansdowne Shopping Centre, Kwantlen University, restaurants, shops and more! Cook Elementary and MacNeil Secondary school catchment. Great investment opportunity or a place to call your own. 1 parking included.

KEY INFORMATION

MLS® R2399023

Residential Attached

Brighthouse

2 Bedrooms

2 Bathrooms

968 SF

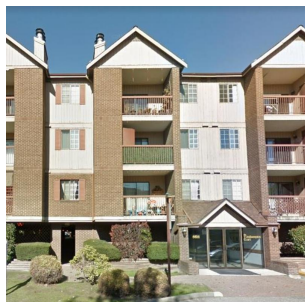
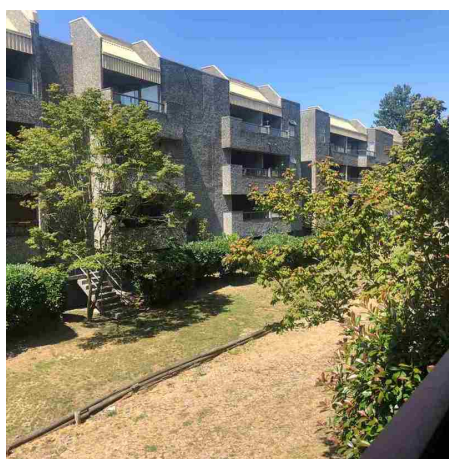
\$352.36 Maintenance Fees

FEATURES

Year Built: 1985

Views: city views

Listed By: rennie & associates realty ltd.



Salina Kai PREC*
604.773.7013
skai@rennie.com
rennie.com/salinakai



Danny Chow PREC*
604.765.2469
dchow@rennie.com
rennie.com/dannychow

rennie