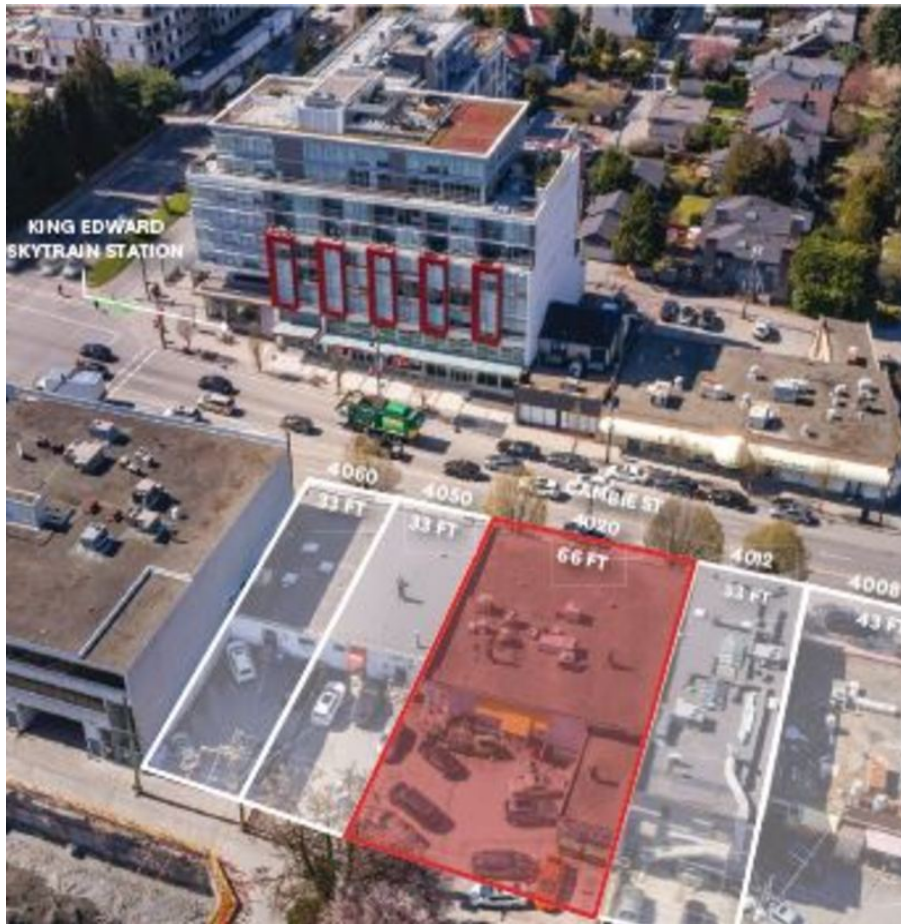


# 4020 Cambie St, Vancouver



4020 Cambie Street is prominently situated between W King Edward Avenue and W 23rd Avenue, directly adjacent to the King Edward Station, providing unrivaled access to shopping, parks, transit, and much more. Location Highlights Direct access to King Edward Station 600m from Queen Elizabeth Park 5 minutes to Oakridge Centre 10 minutes to Downtown Vancouver The City of Vancouver identifies 4020 Cambie Street as part of the Cambie Corridor Planning Program, for a mixed-use residential/commercial, permitting a density of 2.5 - 3.0 FSR\* (estimated), with a height restriction up to 8 storeys. Investment Highlights Site Area (est.): 7,910 square feet Approx. 5,082 square feet of leaseable area Annual Income (est. 2019): \$124,690 Escalating Basic Rents Asking Price: Please Contact Listing Agent

## KEY INFORMATION

MLS®

Multifamily

Riley Park

0 Bedrooms

0 Bathrooms

0 SF

## FEATURES

Listed By: rennie & associates realty ltd.



**Jason Lai** PREC\*  
778.996.1788  
jlai@rennie.com  
rennie.com/jasonlai

**rennie**