

301 4025 Norfolk Street, Burnaby

\$850,000



Welcome to spacious 2 level town home with 3 bedrooms plus Den and 2.5 baths at Norfolk Terrace, offering one of the best locations in the complex, bright Corner Unit with lots of Windows & a balcony facing North Shore mountain view. It features an open concept living space, kitchen with granite counters, breakfast bar, stainless appliances, laminate floors, crown moldings, cozy fireplace. Den with large window, can be turned into a fourth bedroom for guest. Powder room on the main floor. Steps to Broadview Park with tennis, playgrounds & trails. Close to Hwy 1 and mins away from Gilmore Skytrain, BCIT, Brentwood & Metrotown. Comes with TWO parking lots and a storage locker. Cascade Heights Elementary and Moscrop Secondary Catchement.

KEY INFORMATION

MLS® R2346417

Residential Attached

Central Burnaby

3 Bedrooms

3 Bathrooms

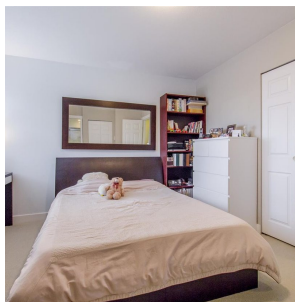
1,254 SF

FEATURES

Year Built: 2008

Views: North Shore Mountains

Listed By: rennie & associates realty ltd.



Vivien Ma PREC*
604.828.2268
vma@rennie.com
rennie.com/vivienma

rennie