

Lot 38 Maplewood Lane, Gibsons

\$299,900



Rare opportunity to buy a lot in the highly desirable Lower Gibsons neighbourhood. Build your dream home on this unique 7,800 sq ft property which has Goosebird Creek passing through it and is located at the end of a quiet cul de sac. Within easy walking distance to Arrowhead Park, two beach accesses, the Gibsons Public Market and all the entertainment and amenities in Lower Gibsons. For additional details click Realtor website.

KEY INFORMATION

MLS® R2302360

Land Only

Gibsons & Area

0 Bedrooms

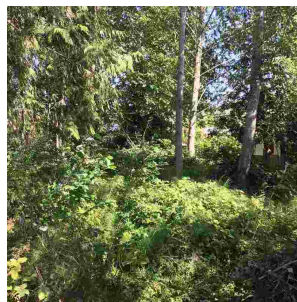
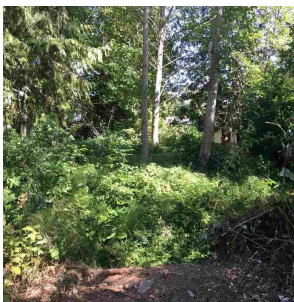
0 Bathrooms

0 SF

7,800 SF Lot

FEATURES

Listed By: Royal LePage Sussex



rennie