

10680 Anglesea Drive, Richmond

\$1,720,000



Tastefully updated 5 bedrooms 3 bathroom family home located in a very nice quiet neighborhood, updated feature include kitchen, bathrooms, roof, furnace, windows, crown molding, doors, hardwood flooring, paint & light fixtures and asphalt driveway. Beautifully landscaped front & back yard. Large deck perfect for family BBQ's. Walking distance to schools, Ironwood shopping district and transit close by. Easy access to Highway 99.

KEY INFORMATION

MLS® R2222683

Residential Detached

Shellmont

5 Bedrooms

3 Bathrooms

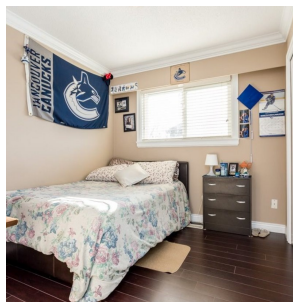
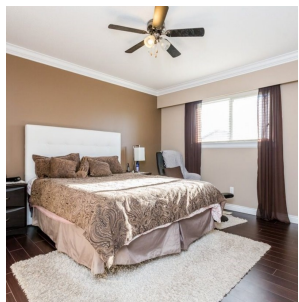
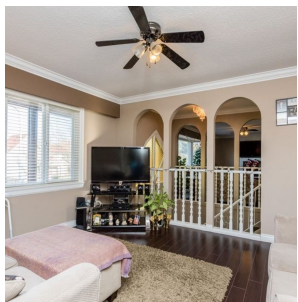
2,330 SF

7,010 SF Lot

FEATURES

Year Built: 1973

Listed By: Sutton Group-West Coast Realty



rennie