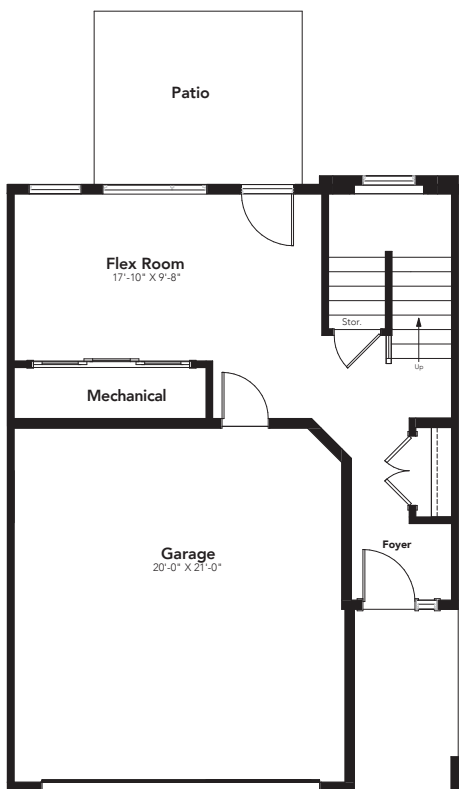


ekos
POINT

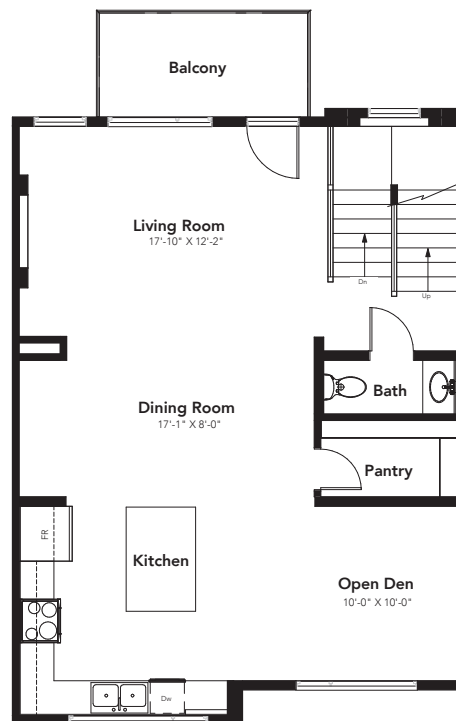
Hudson



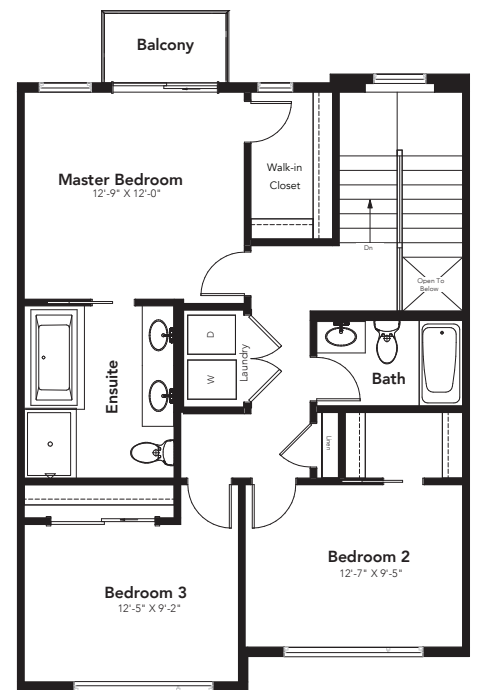
2,155 Sq Ft 3 Beds 2 Full Bath, 1 Half Bath 26' Wide



GROUND: 396 SQ FT



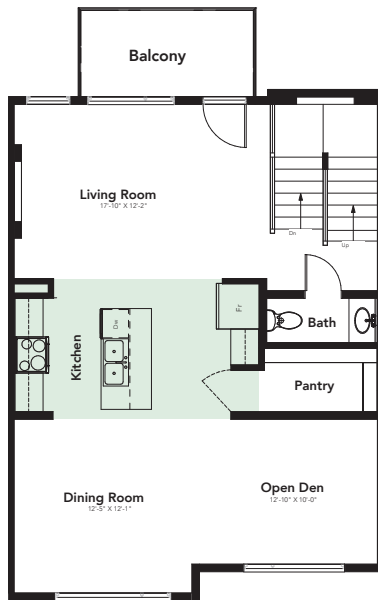
MAIN: 885 SQ FT



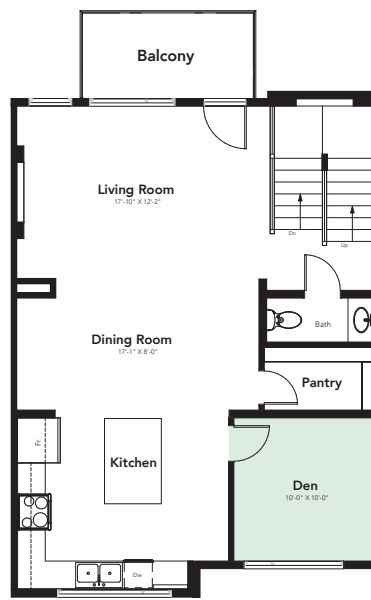
SECOND: 874 SQ FT

Options

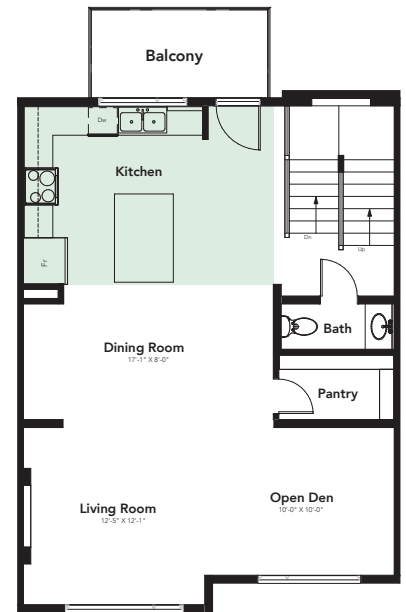
ekos
POINT



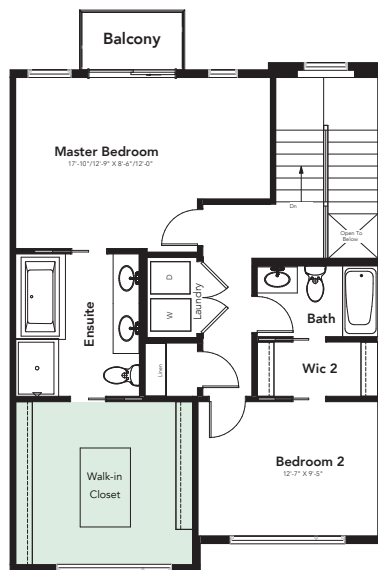
☐ MAIN: CENTER KITCHEN



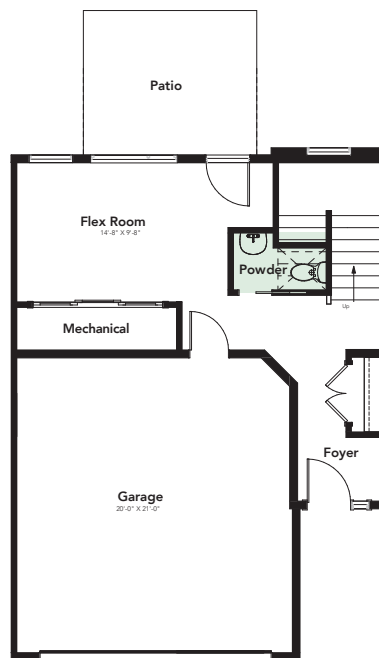
☐ MAIN: DEN



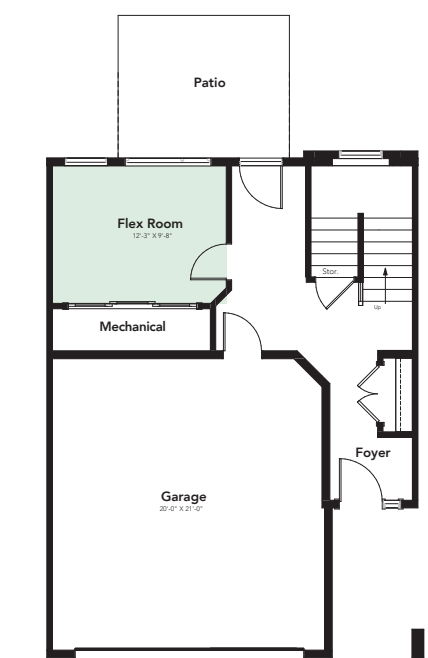
☐ MAIN: REAR KITCHEN



☐ SECOND: 2 BEDROOM OPTION



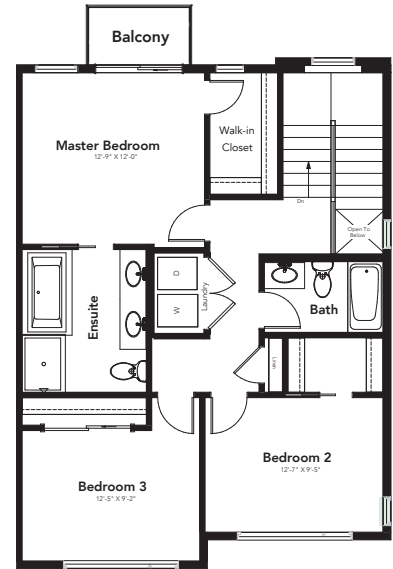
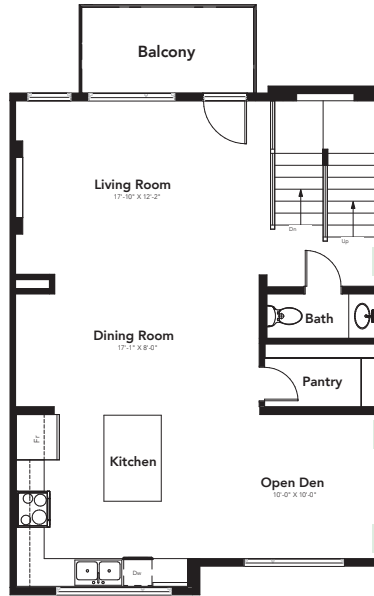
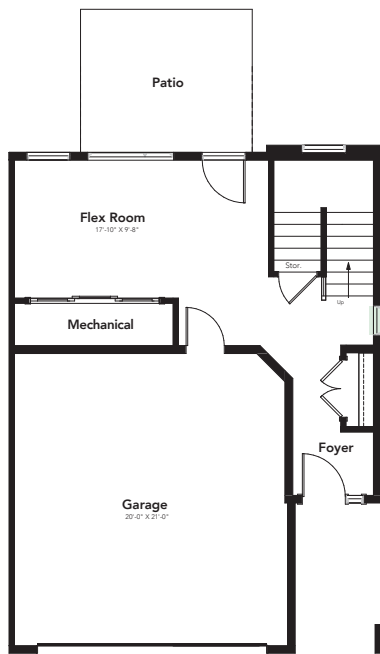
☐ GROUND: POWDER ROOM



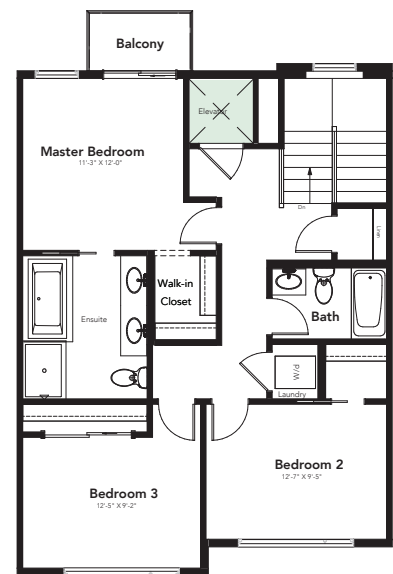
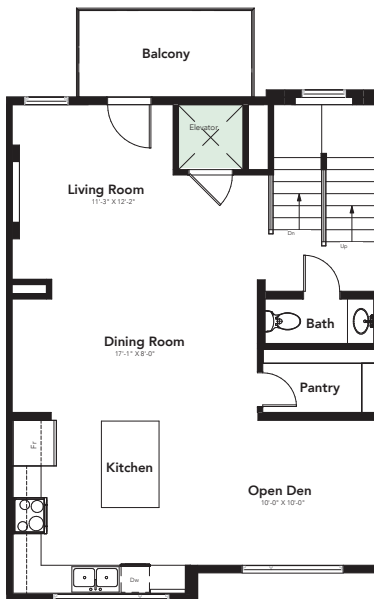
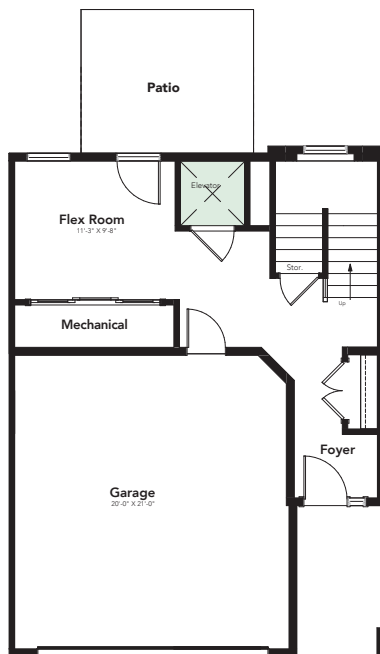
☐ GROUND: FLEX ROOM

Options

ekos
POINT



☐ HIGH VISIBILITY END UNIT

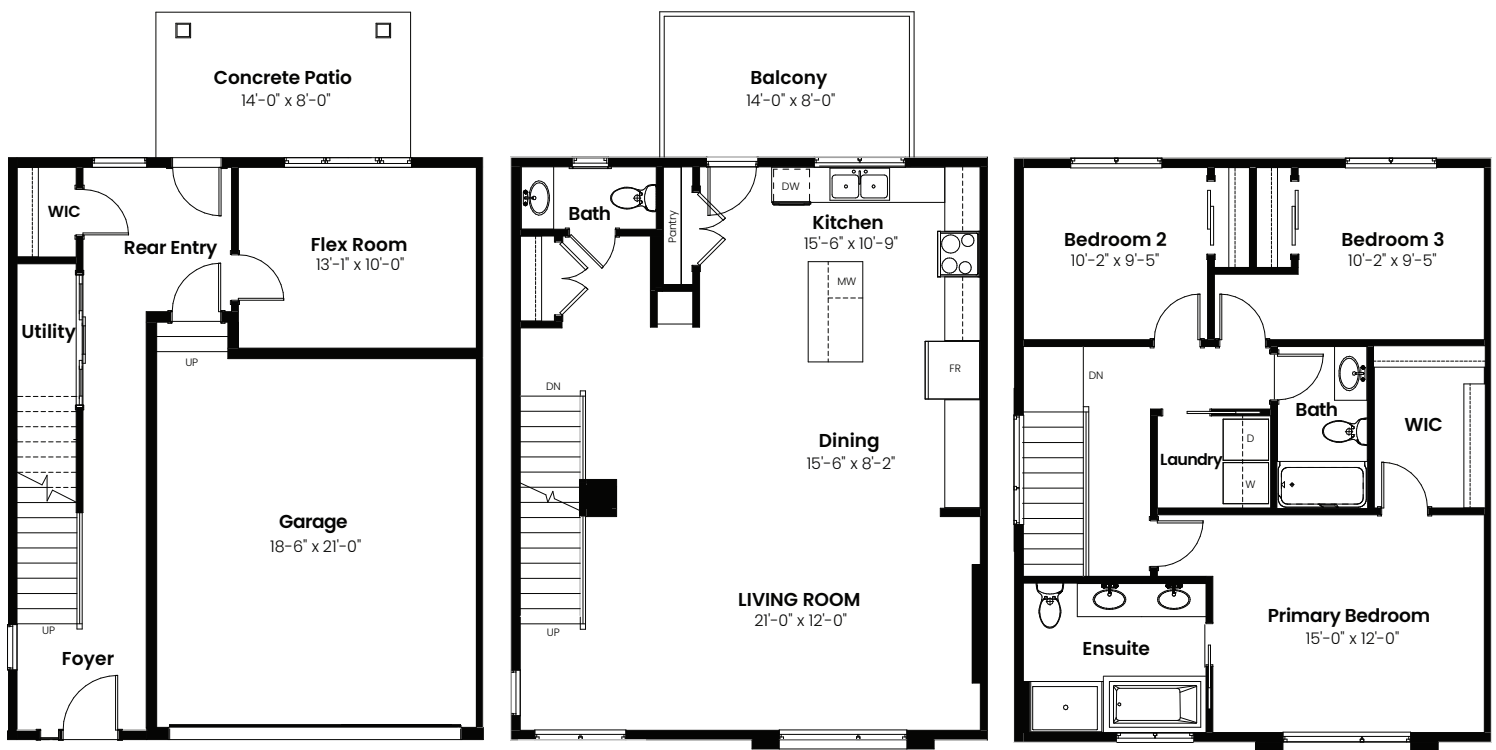


☐ ELEVATOR OPTION

3 Beds | 2.5 Baths | 2,062 Sq. Ft | 26' Wide

Trevi

End Unit



Ground Floor: 388 Sq Ft

Main Floor: 837 Sq Ft

Second Floor: 837 Sq Ft



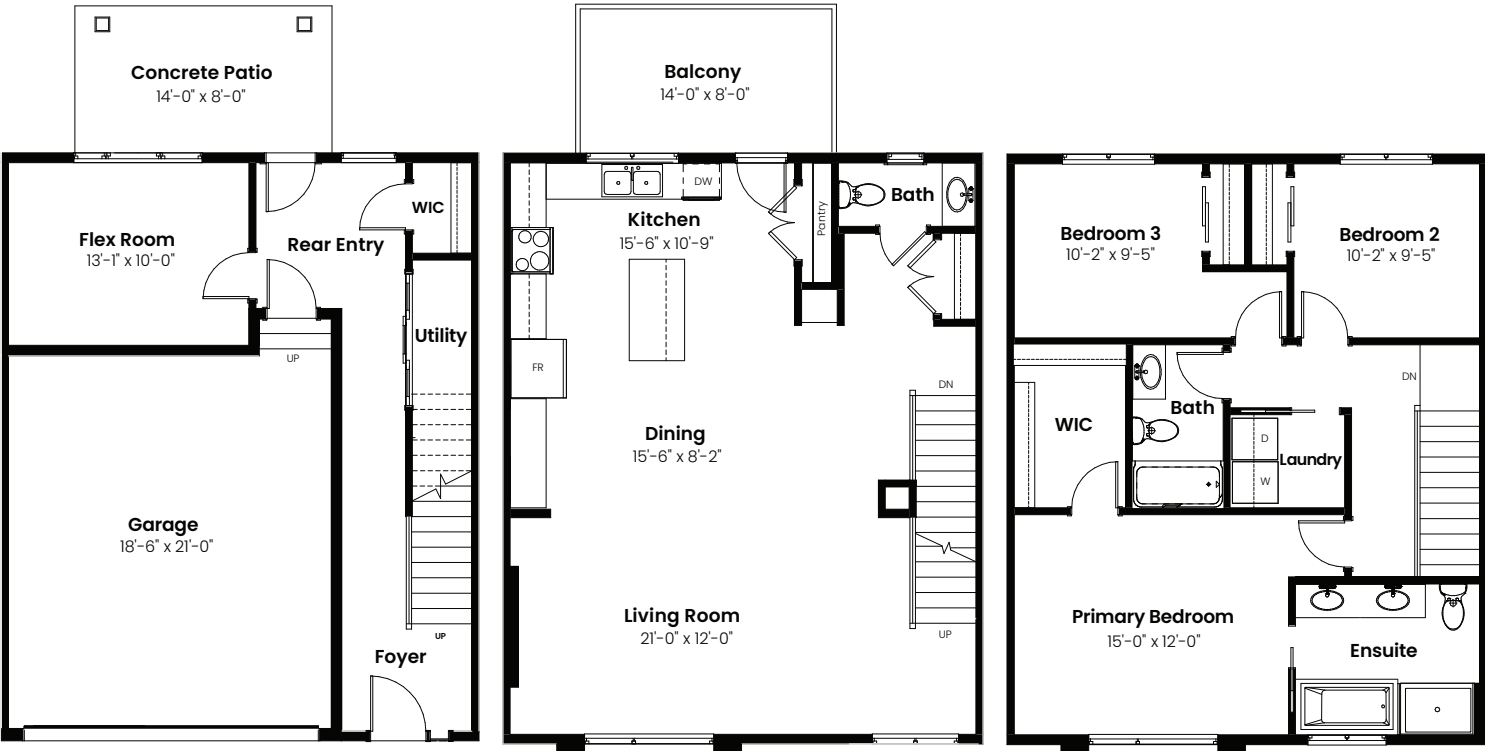
© 2024 Landmark Group of Companies Inc. All rights reserved. Any use or reproduction in whole or in part of these promotional materials without the prior written authorization of Landmark Group of Companies Inc. is strictly prohibited. Floor plans, specifications, pricing and dimensions shown are approximate and subject to change without notice. Artist rendering shown. Interior room dimensions are taken from inside of walls. Garage dimensions are taken from outside of walls. Revised on 08/21/2024.



3 Beds | 2.5 Baths | 2,047 Sq. Ft | 26' Wide

Trevi

Middle Unit



Ground Floor: 383 Sq Ft

Main Floor: 832 Sq Ft

Second Floor: 832 Sq Ft



© 2024 Landmark Group of Companies Inc. All rights reserved. Any use or reproduction in whole or in part of these promotional materials without the prior written authorization of Landmark Group of Companies Inc. is strictly prohibited. Floor plans, specifications, pricing and dimensions shown are approximate and subject to change without notice. Artist rendering shown. Interior room dimensions are taken from inside of walls. Garage dimensions are taken from outside of walls. Revised on 08/21/2024.



3 Beds | 2.5 Baths | 2,047-2,062 Sq. Ft | 26' Wide

Trevi

Elevation

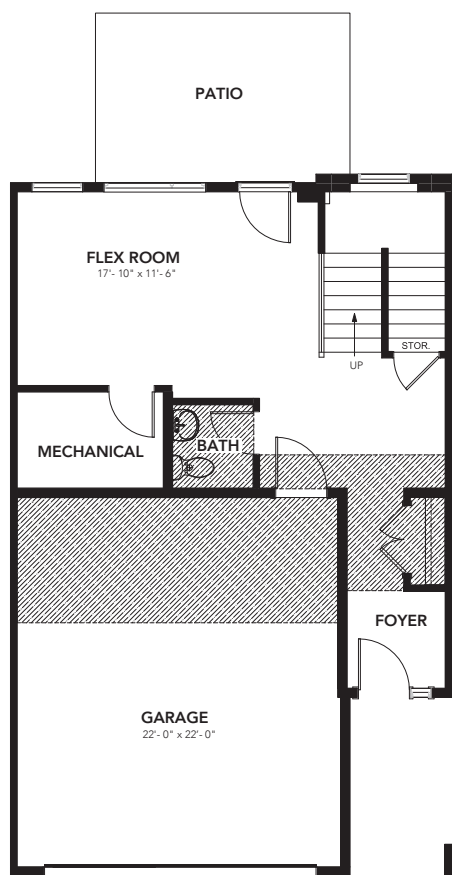


© 2024 Landmark Group of Companies Inc. All rights reserved. Any use or reproduction in whole or in part of these promotional materials without the prior written authorization of Landmark Group of Companies Inc. is strictly prohibited. Floor plans, specifications, pricing and dimensions shown are approximate and subject to change without notice. Artist rendering shown. Interior room dimensions are taken from inside of walls. Garage dimensions are taken from outside of walls. Revised on 08/21/2024.

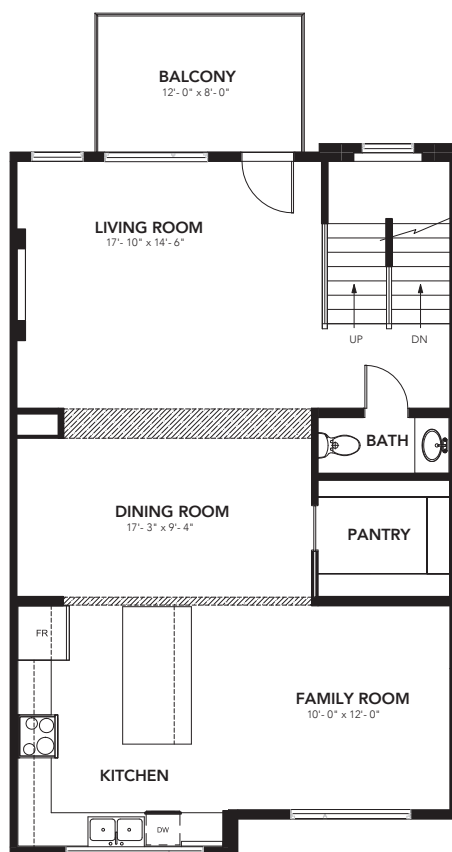
EMERALD

2,580 SQ FT 3 BEDS 2 FULL BATH, 2 HALF BATH 26' WIDE

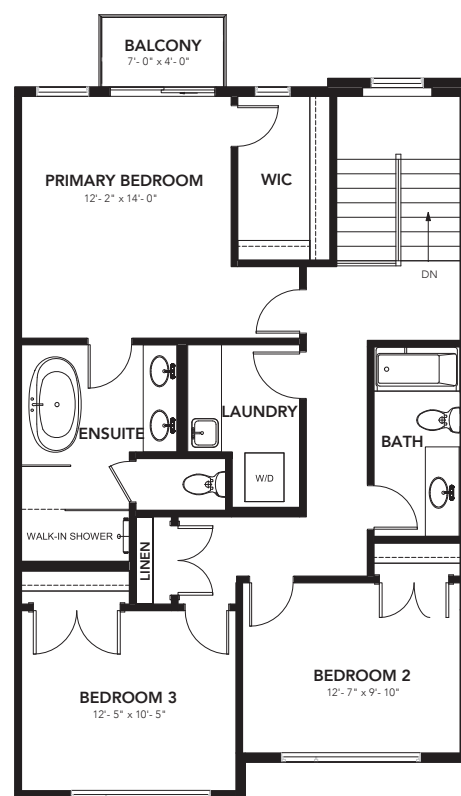
 DROPPED CEILING



GROUND: 504 SQ FT



MAIN: 1,038 SQ FT

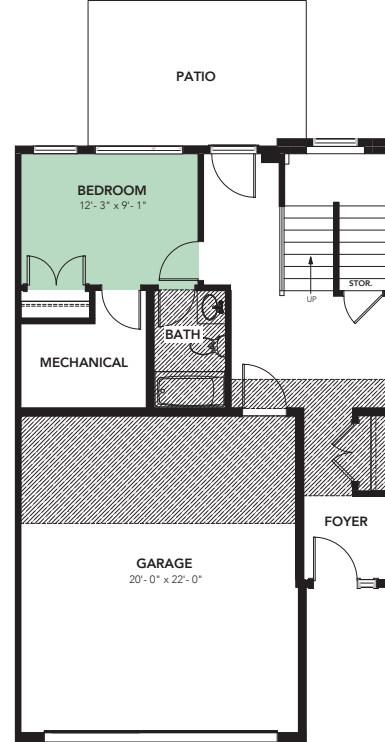
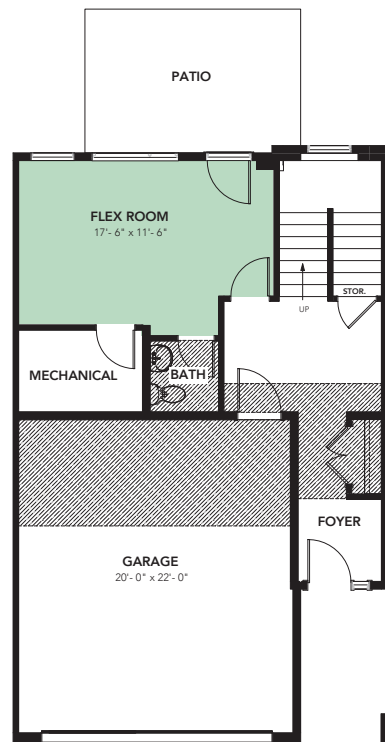


SECOND: 1,038 SQ FT

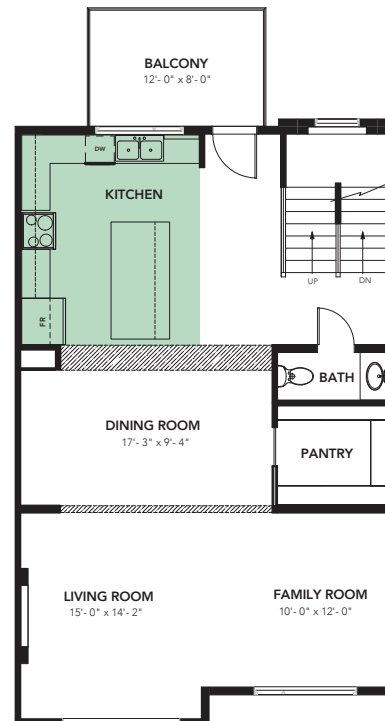
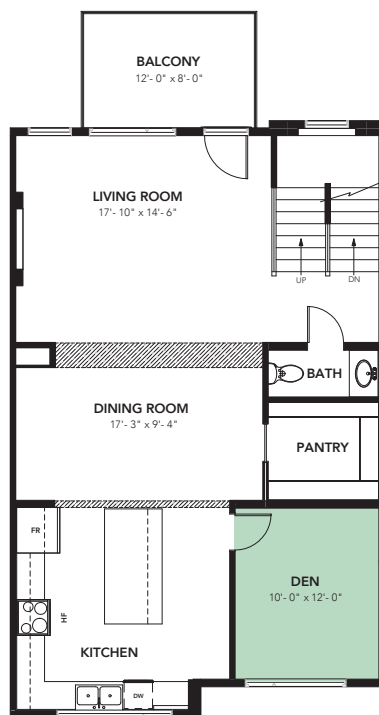
OPTIONS



☑ DROPPED CEILING



☐ GROUND FLEX ROOM: 504 SQ FT ☐ GROUND BEDROOM: 494 SQ FT



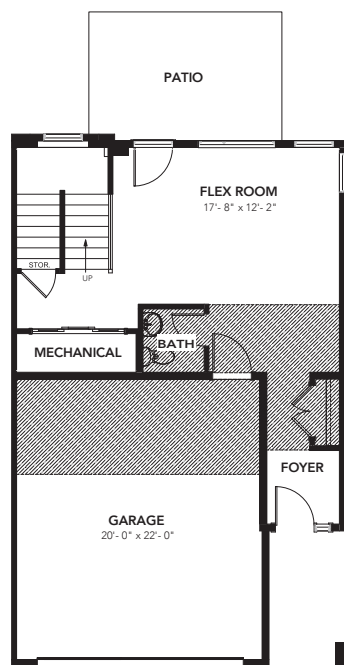
☐ MAIN FLOOR DEN OPTION: 1,038 SQ FT ☐ REAR L-SHAPED KITCHEN: 1,038 SQ FT

OPTIONS

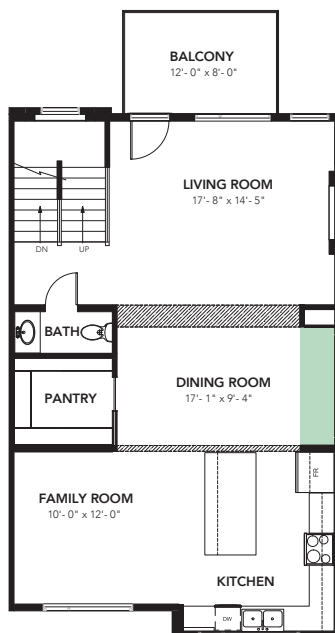
ekos
POINT

☐ HIGH VISIBILITY END UNIT

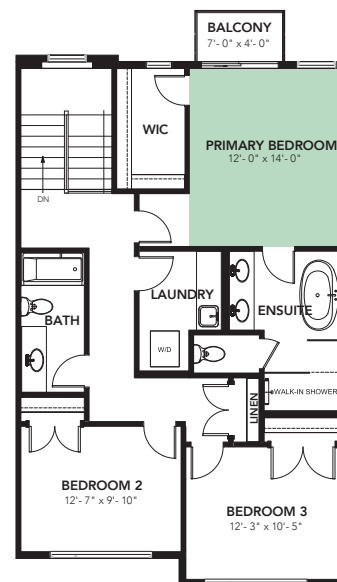
☒ DROPPED CEILING



GROUND: 515 SQ FT

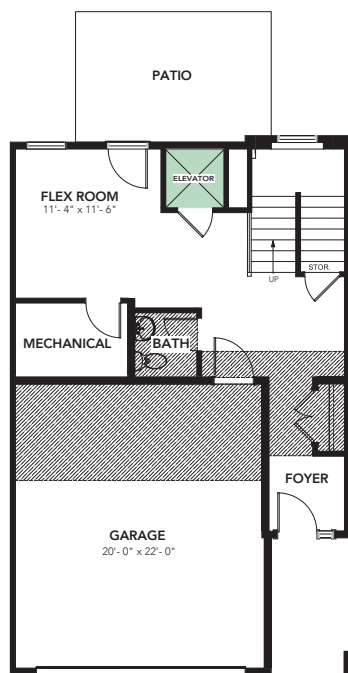


MAIN: 1,038 SQ FT

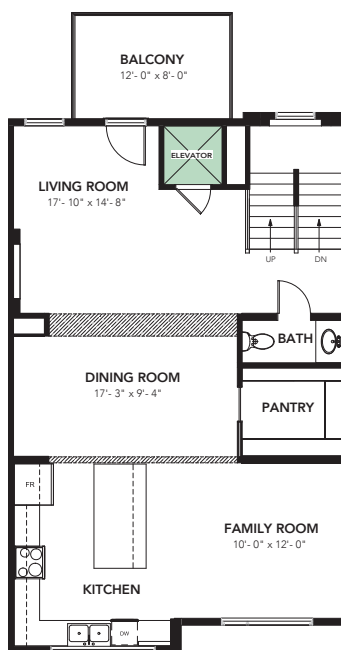


SECOND: 1,038 SQ FT

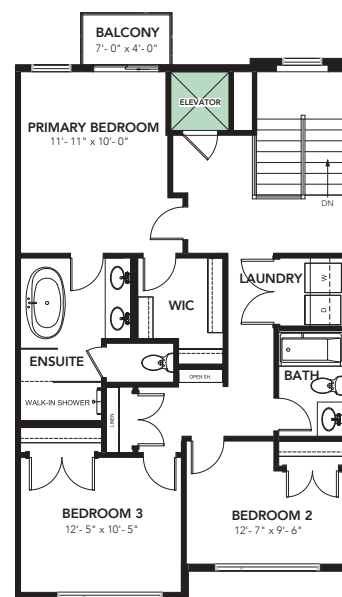
☐ ELEVATOR OPTION



GROUND: 504 SQ FT



MAIN: 1,038 SQ FT



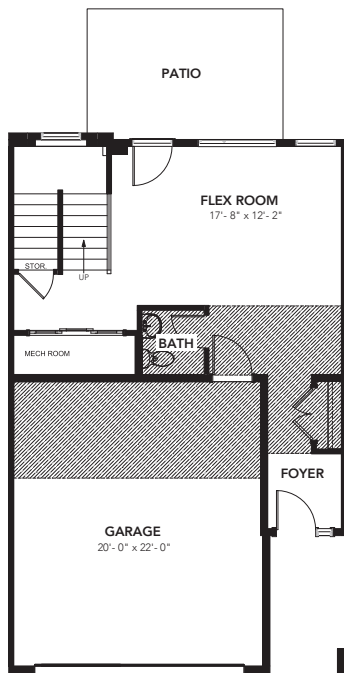
SECOND: 1,038 SQ FT

OPTIONS

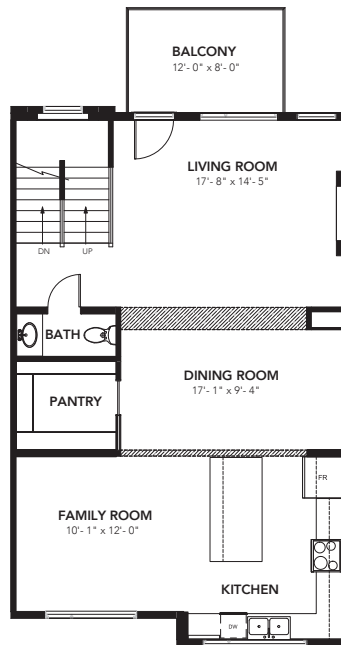
ekos
POINT

☐ LOW VISIBILITY END UNIT

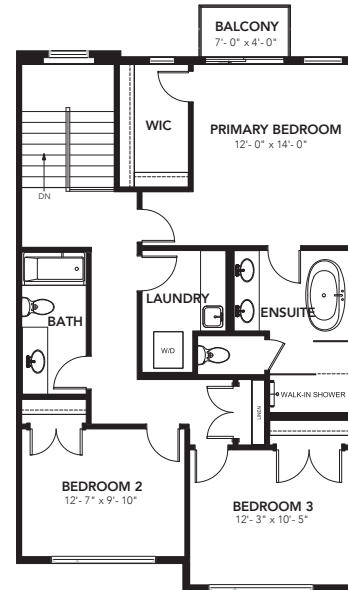
☒ DROPPED CEILING



GROUND: 515 SQ FT



MAIN: 1,038 SQ FT



SECOND: 1,038 SQ FT