

The Devonshire 36



Please confirm with our Sales Team which elevations are available in your desired community. All elevations, floor plans and dimensions are for illustrative purposes only and are intended to convey a concept and visualization of our homes. They are subject to modifications at any time and are not to be used for contractual purposes. Square footage noted reflects Residential Measurement Standard.



crystalcreekhomes.ca



The Devonshire 36

MODERN FARMHOUSE

2732 SQ FT

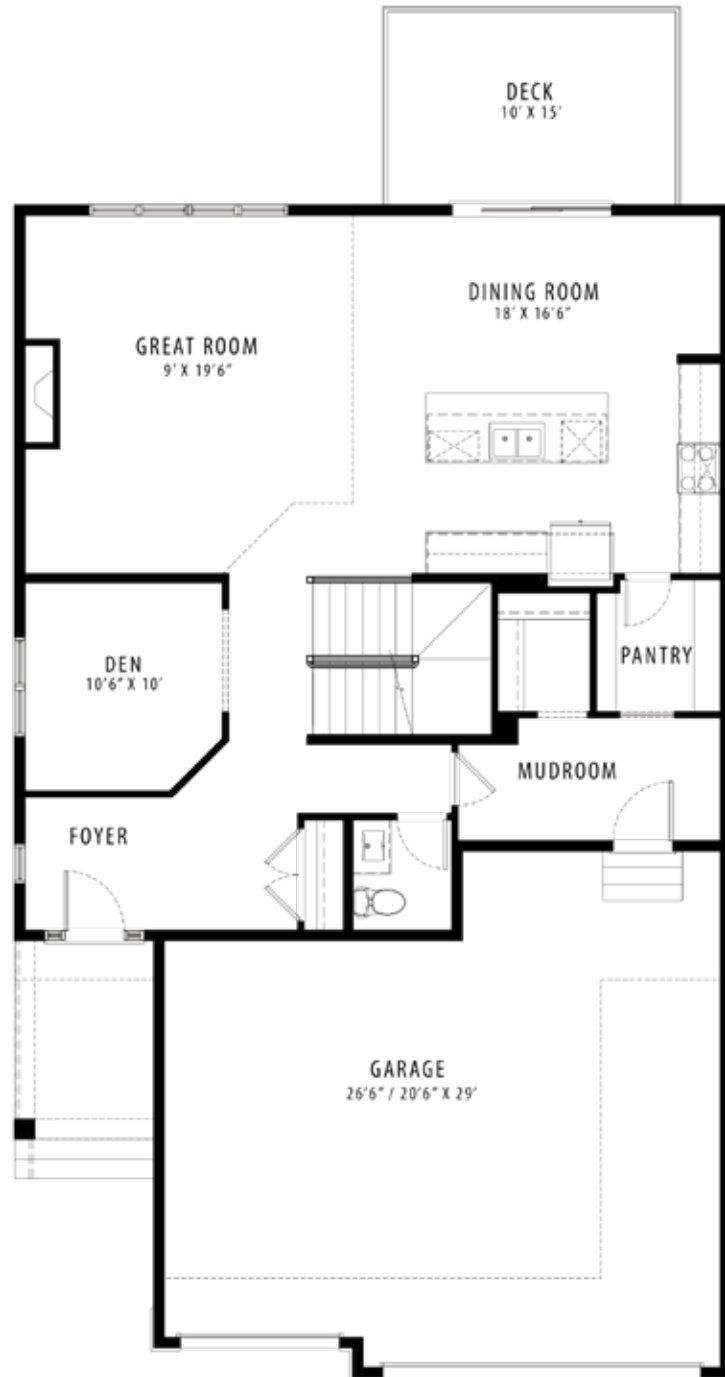
3 BEDROOMS | 2.5 BATHROOMS | 3 CAR GARAGE

crystalcreekhomes.ca

The Devonshire 36

MODERN FARMHOUSE

2732 SQ FT



MAIN FLOOR | 1271 SQ FT



UPPER FLOOR | 1461 SQ FT



19 YEARS
→ EST. 2004

crystalcreekhomes.ca

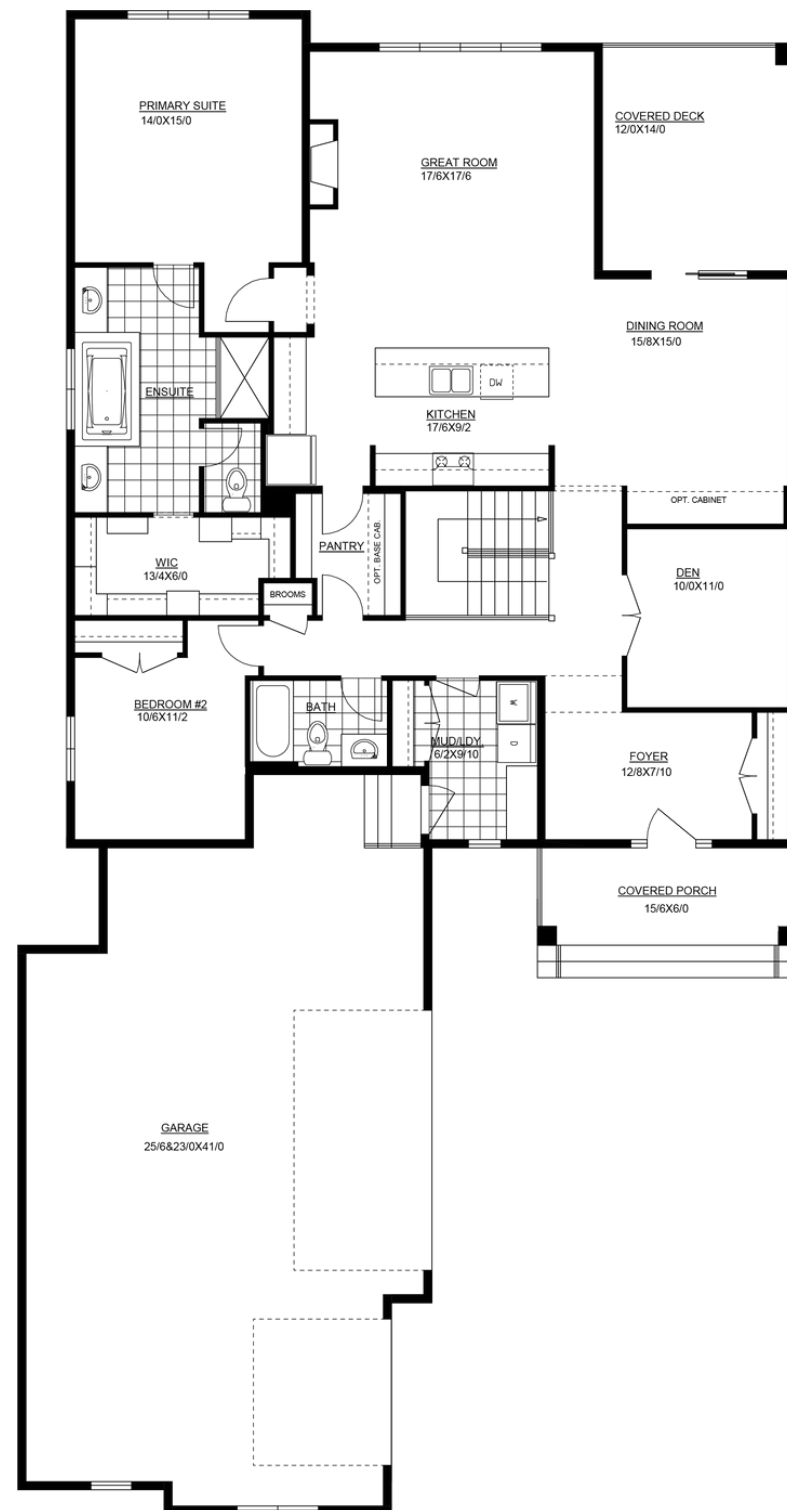


The Dorchester
48

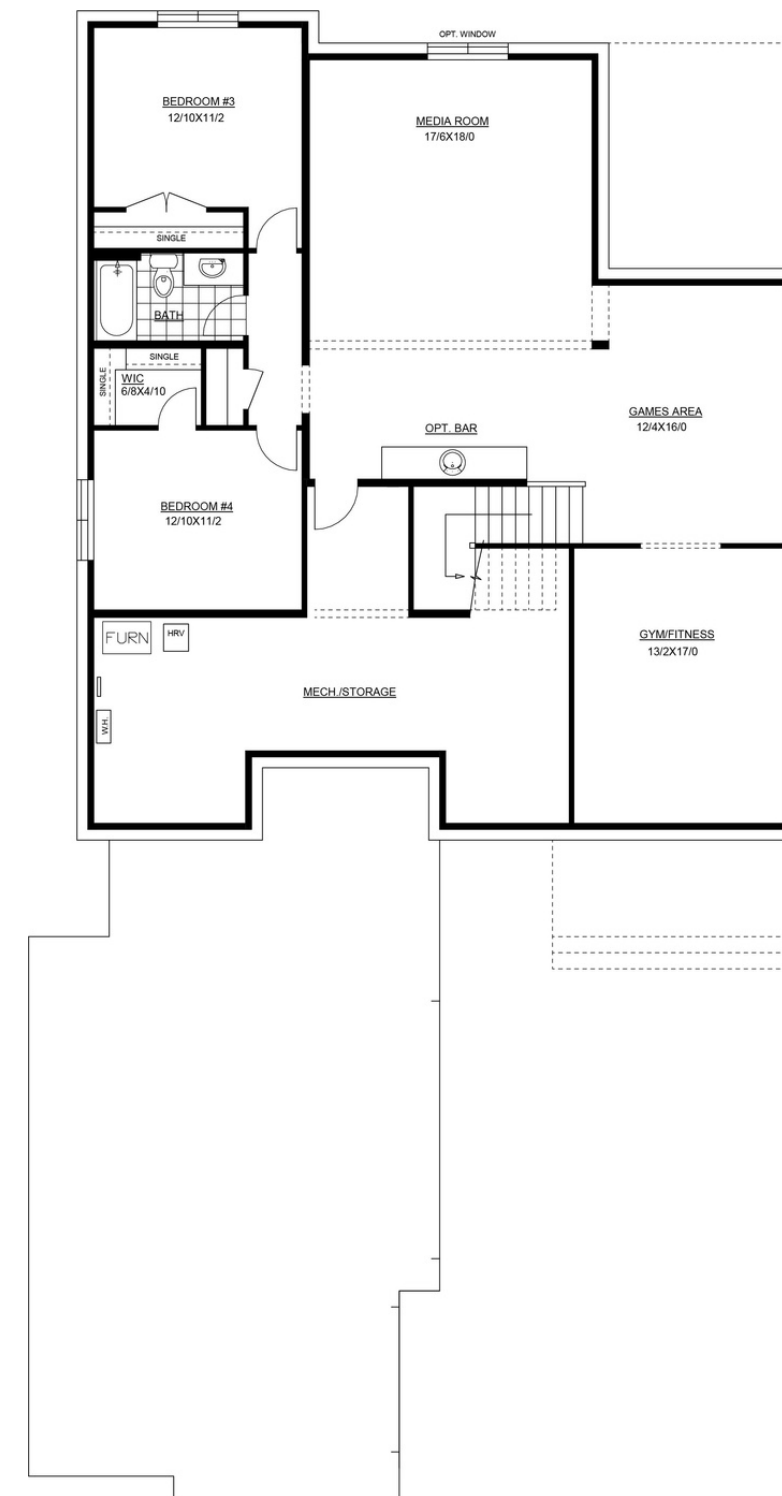
2 Bath
2 Bed
2043 sqft

The Dorchester 48

2043 sqft



Main Floor | 2043 sqft



OPTIONAL Lower Level | 1438 sqft

Available Elevations:

- Please confirm with our Sales Team which elevations are available in your desired community. All elevations, floorplans and dimensions are for illustrative purposes only and are intended to convey a concept and visualization of our homes. They are subject to modifications at any time and are not to be used for contractual purposes. Square footage noted reflects Residential Measurement Standard.



French



Craftsman



Tudor



CRYSTAL CREEK
H O M E S

**QUICK
POSSESSION**



The Rockwell 30

205 Creekstone Hill SW

2601 SQFT

3 BEDROOMS | 2.5 BATHROOMS | 2 CAR GARAGE


HUDSON
IN PINE CREEK

crystalcreekhomes.ca

The Rockwell 30

205 Creekstone Hill SW

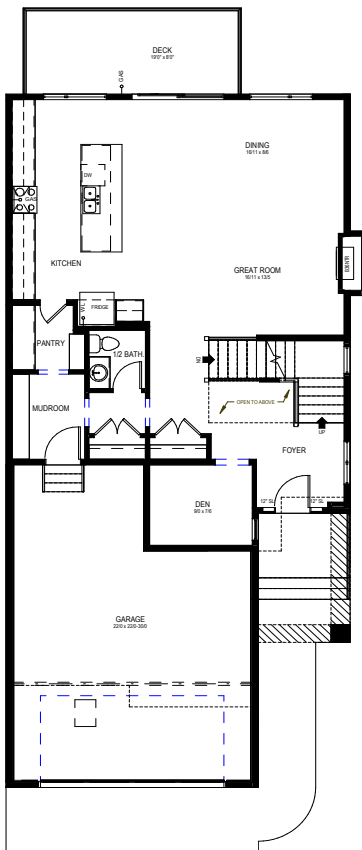
2601 SQ FT

3 BEDROOMS | 2.5 BATHROOMS | 2 CAR GARAGE

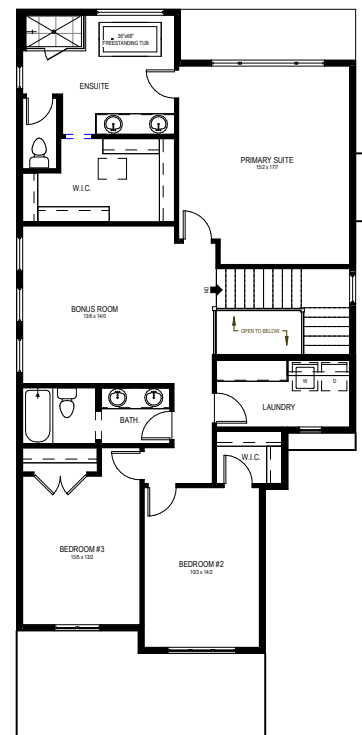


FRONT ELEVATION

MODERN PRAIRIE



MAIN FLOOR | 1161 SQ FT



UPPER FLOOR | 1440 SQ FT

Contact our sales team for more information: HUDSON@CRYSTALCREEKHOMES.CA | 403-930-6399

All elevations, floorplans and dimensions are for illustrative purposes only and are intended to convey a concept and visualization of our homes. They are subject to modifications at any time and are not to be used for contractual purposes.



crystalcreekhomes.ca



CRYSTAL CREEK
HOMES

**QUICK
POSSESSION**



The Everett

209 Creekstone Hill SW

2487 SQFT

3 BEDROOMS | 2.5 BATHROOMS | 2 CAR GARAGE

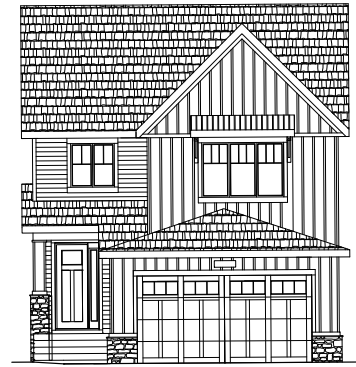
crystalcreekhomes.ca

The Everett

209 Creekstone Hill SW

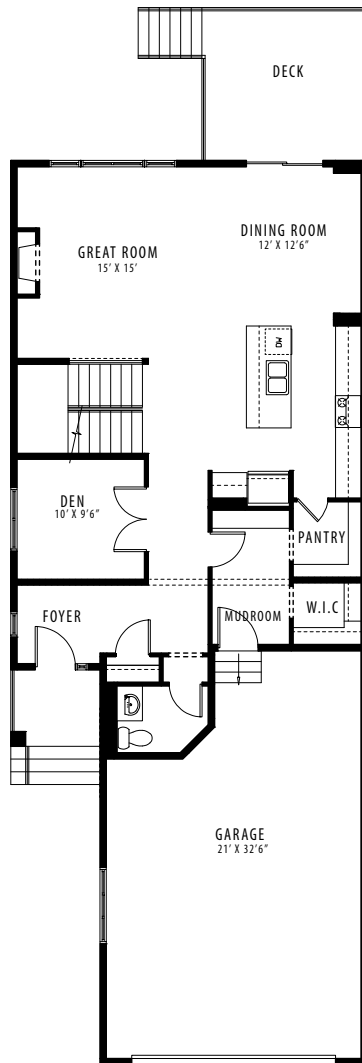
2487 SQFT

3 BEDROOMS | 2.5 BATHROOMS | 2 CAR GARAGE

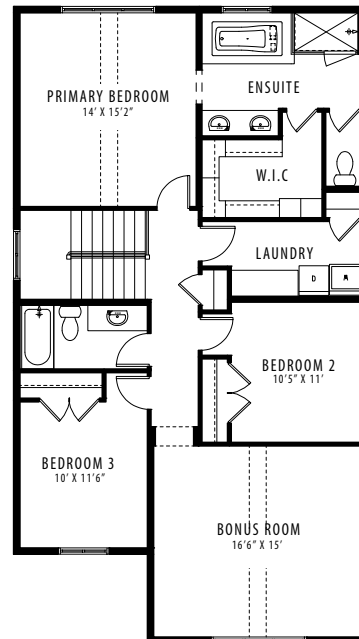


FRONT ELEVATION

MODERN FARMHOUSE



UPPER FLOOR | 1162 SQFT



UPPER FLOOR | 1325 SQFT

Contact our sales team for more information: HUDSON@CRYSTALCREEKHOMES.CA | 403-930-6399

All elevations, floorplans and dimensions are for illustrative purposes only and are intended to convey a concept and visualization of our homes. They are subject to modifications at any time and are not to be used for contractual purposes.



crystalcreekhomes.ca



CRYSTAL CREEK
H O M E S

**QUICK
POSSESSION**



The Rockwell

149 Creekstone Hill SW

2534 SQFT

3 BEDROOMS | 2.5 BATHROOMS | 3 CAR TANDEM GARAGE

crystalcreekhomes.ca

The Rockwell

149 Creekstone Hill SW

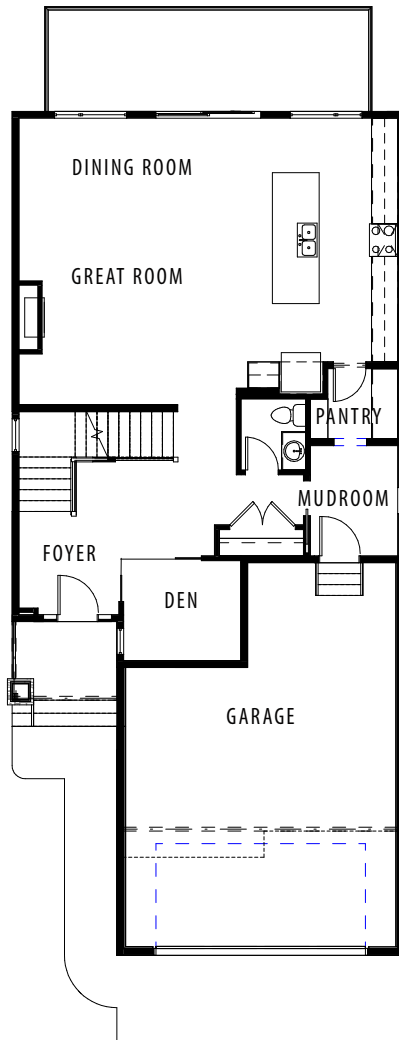
2534 SQFT

3 BEDROOMS | 2.5 BATHROOMS | 3 CAR TANDEM GARAGE

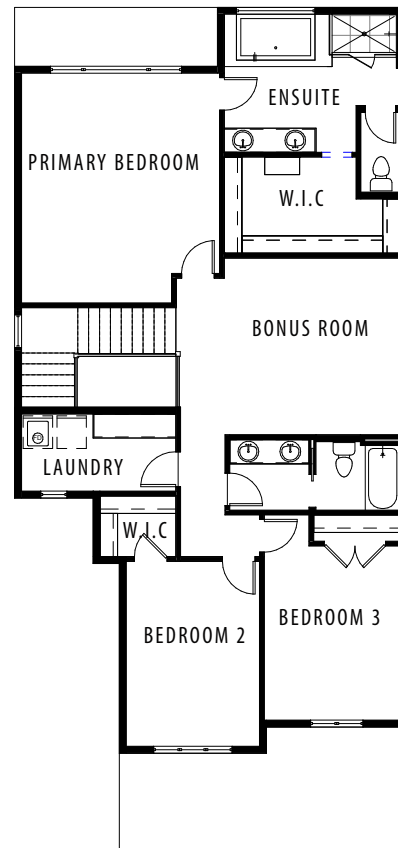


REAR ELEVATION

MODERN FARMHOUSE



MAIN FLOOR | 1151 SQFT



UPPER LEVEL | 1383 SQFT

Contact our sales team for more information: HUDSON@CRYSTALCREEKHOMES.CA | 403-930-6399

All elevations, floorplans and dimensions are for illustrative purposes only and are intended to convey a concept and visualization of our homes. They are subject to modifications at any time and are not to be used for contractual purposes.



crystalcreekhomes.ca

The Mason 34



Please confirm with our Sales Team which elevations are available in your desired community. All elevations, floor plans and dimensions are for illustrative purposes only and are intended to convey a concept and visualization of our homes. They are subject to modifications at any time and are not to be used for contractual purposes. Square footage noted reflects Residential Measurement Standard.



crystalcreekhomes.ca



The Mason 34

MODERN FARMHOUSE 2863 SQ FT

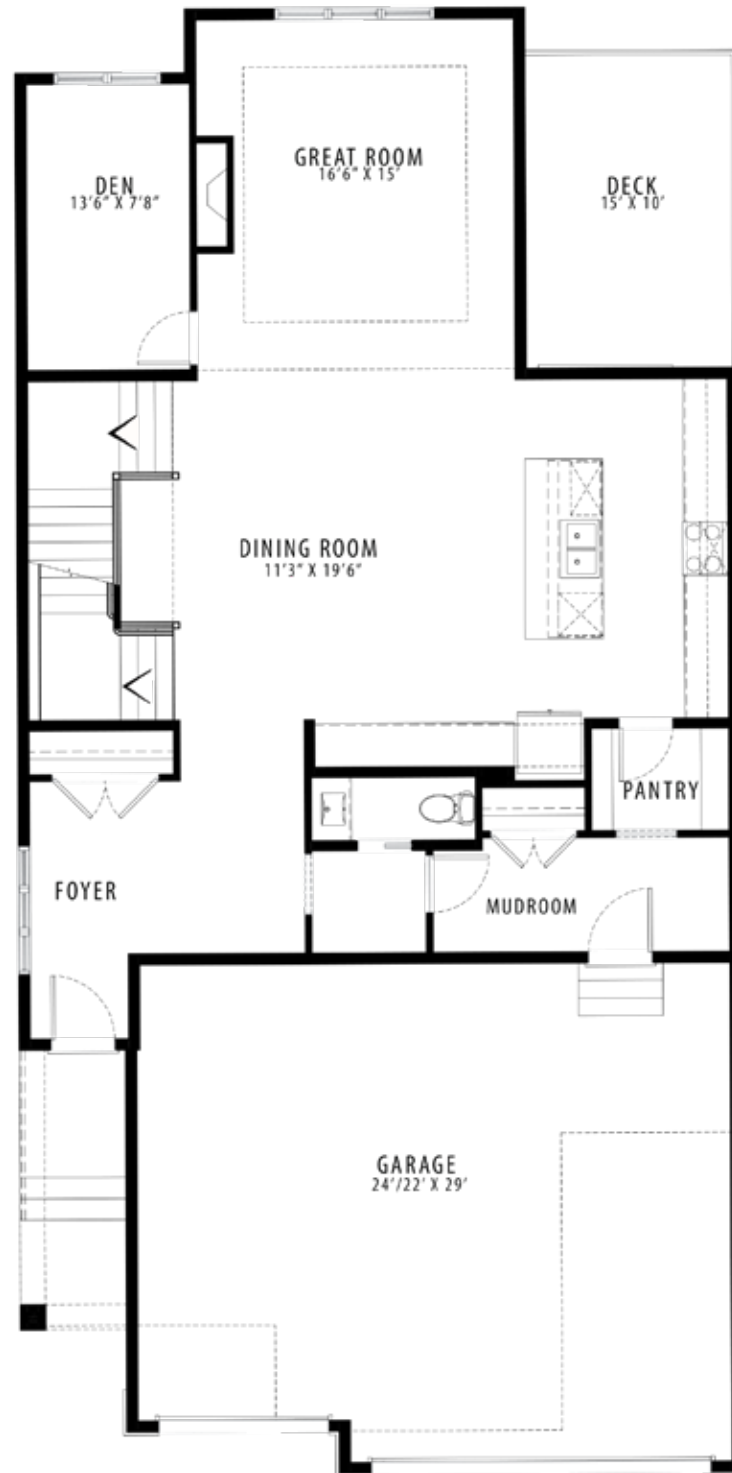
3 BEDROOMS | 2.5 BATHROOMS | 3 CAR GARAGE

crystalcreekhomes.ca

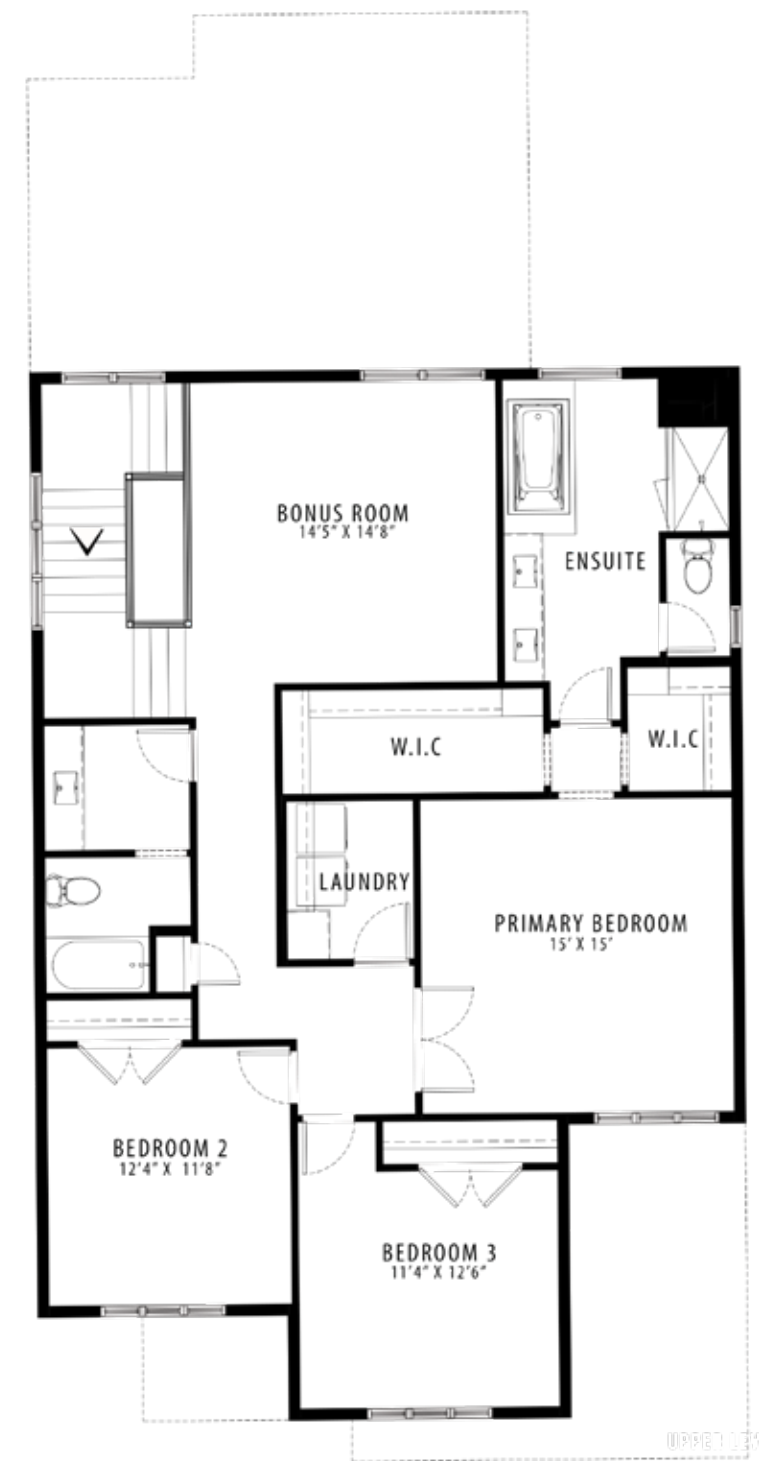
The Mason 34

MODERN FARMHOUSE

2863 SQ FT



MAIN FLOOR | 1359 SQ FT



UPPER FLOOR | 1504 SQ FT

The Easton 36



Please confirm with our Sales Team which elevations are available in your desired community. All elevations, floor plans and dimensions are for illustrative purposes only and are intended to convey a concept and visualization of our homes. They are subject to modifications at any time and are not to be used for contractual purposes. Square footage noted reflects Residential Measurement Standard.



crystalcreekhomes.ca



The Easton 36

WEST COAST MODERN 3175 SQ FT

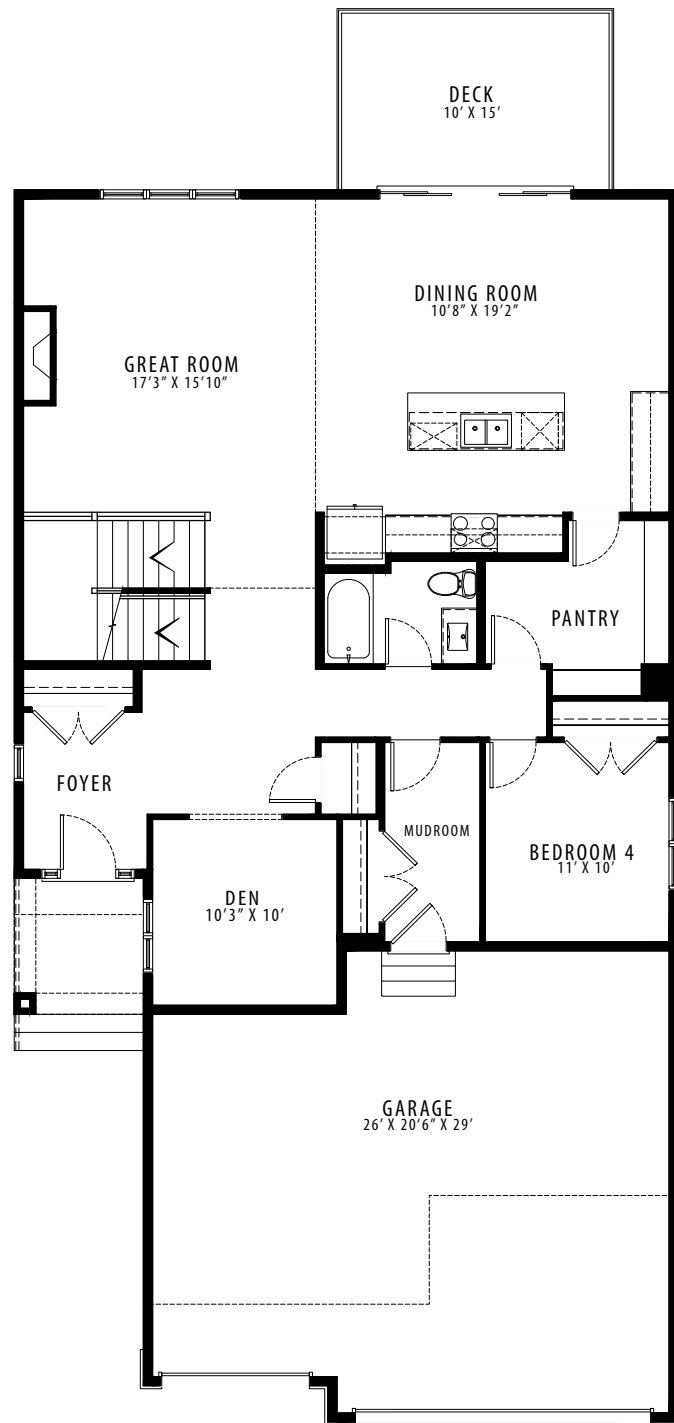
4 BEDROOMS | 3 BATHROOMS | 3 CAR GARAGE

crystalcreekhomes.ca

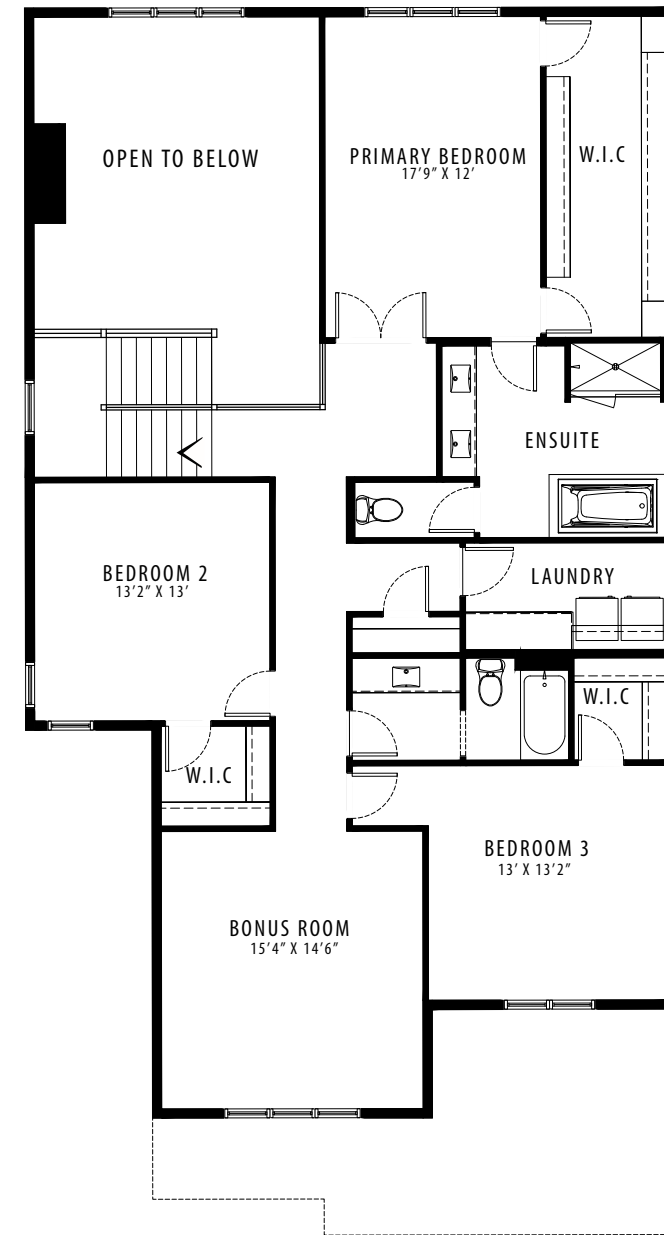
The Easton 36

WEST COAST MODERN

3175 SQ FT



MAIN FLOOR | 1522 SQ FT



UPPER FLOOR | 1653 SQ FT

The Somerton 38



Please confirm with our Sales Team which elevations are available in your desired community. All elevations, floor plans and dimensions are for illustrative purposes only and are intended to convey a concept and visualization of our homes. They are subject to modifications at any time and are not to be used for contractual purposes. Square footage noted reflects Residential Measurement Standard.



crystalcreekhomes.ca



The Somerton 38

MODERN FARMHOUSE 3149 SQ FT

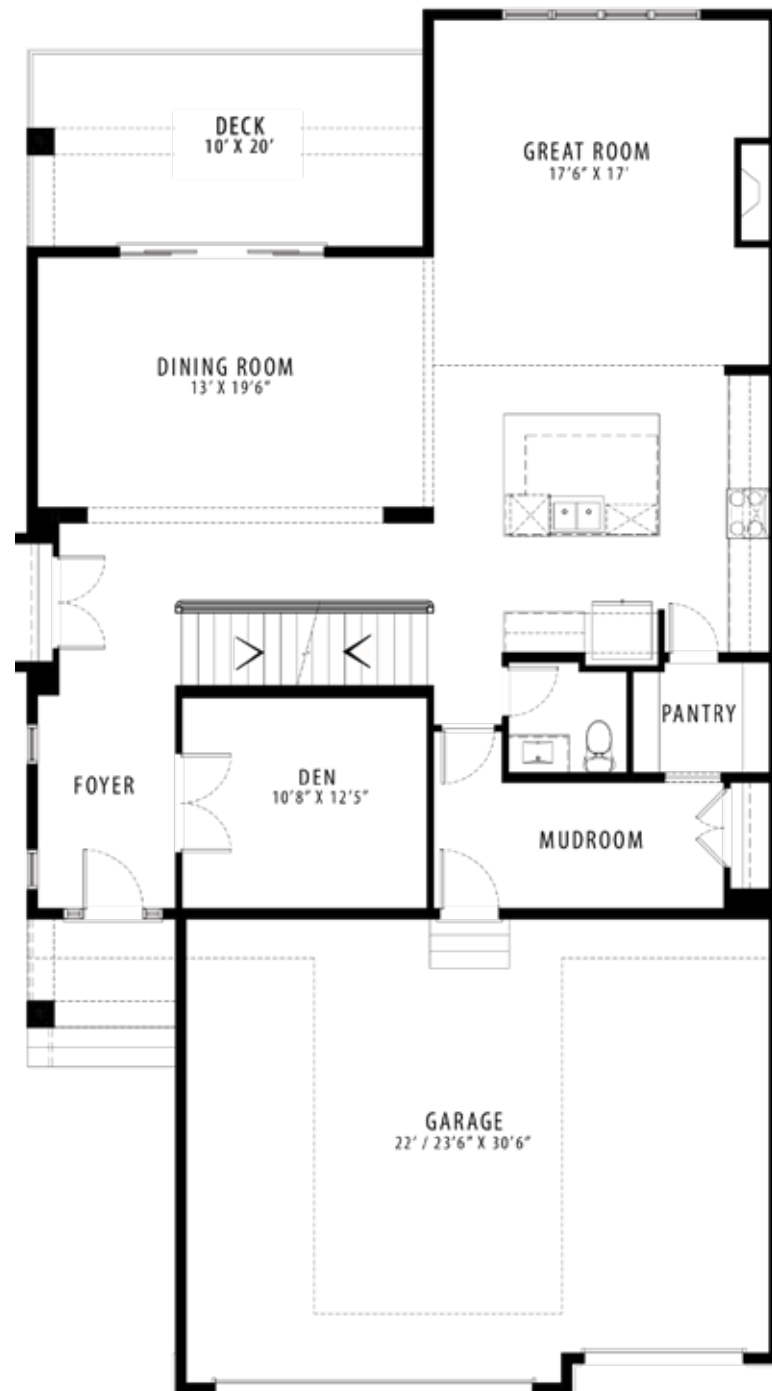
3 BEDROOMS | 2.5 BATHROOMS | 3 CAR GARAGE

crystalcreekhomes.ca

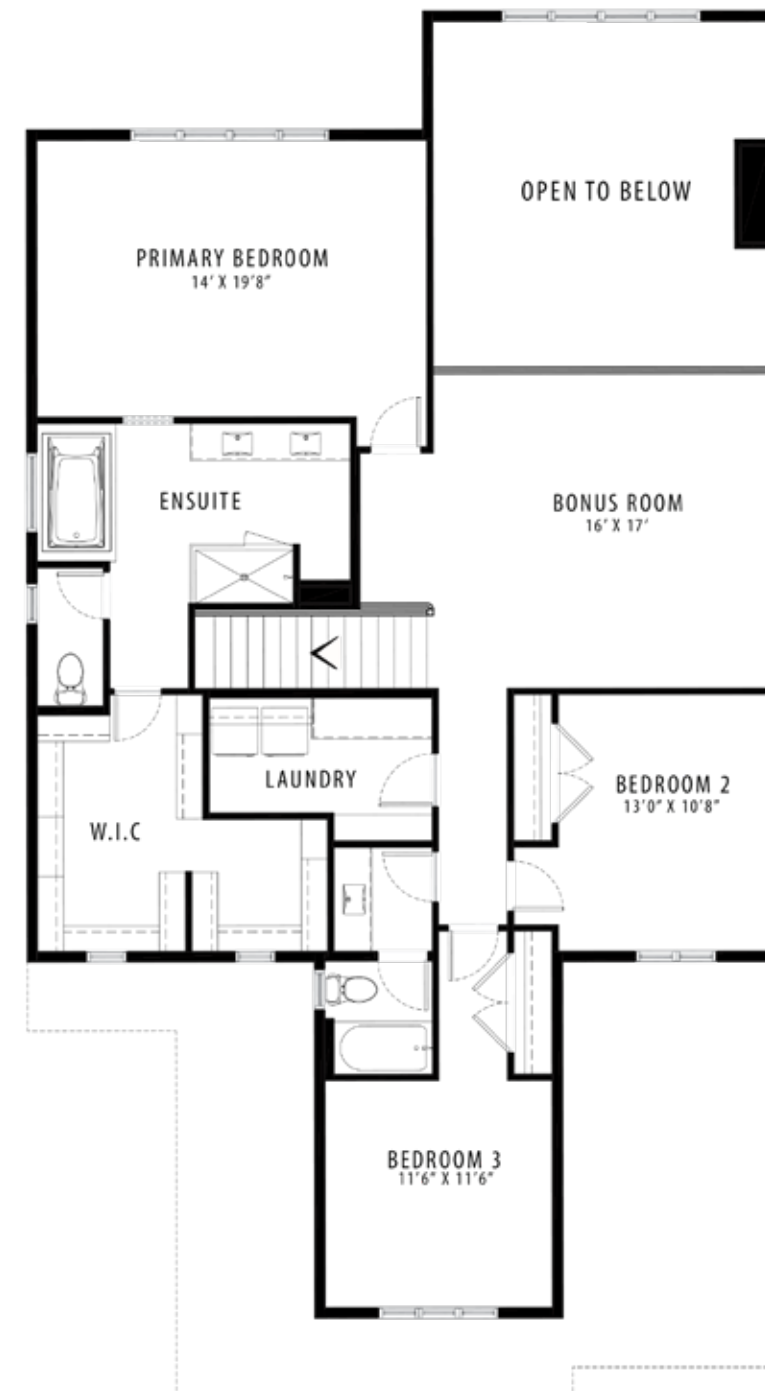
The Somerton 38

MODERN FARMHOUSE

3149 SQ FT



MAIN FLOOR | 1517 SQ FT



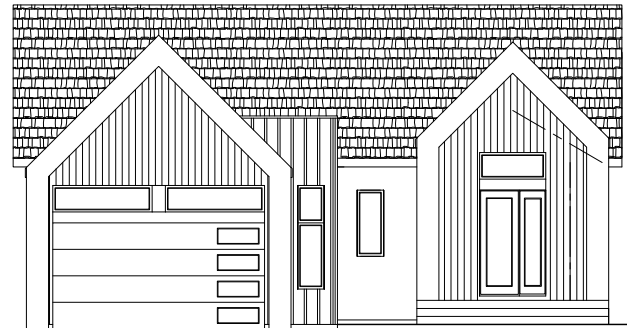
UPPER FLOOR | 1632 SQ FT

The Dorchester 44

AVAILABLE ELEVATIONS



FRONT ELEVATION **PRAIRIE**



FRONT ELEVATION **SCANDINAVIAN**



FRONT ELEVATION **MODERN FARMHOUSE**

Please confirm with our Sales Team which elevations are available in your desired community. All elevations, floor plans and dimensions are for illustrative purposes only and are intended to convey a concept and visualization of our homes. They are subject to modifications at any time and are not to be used for contractual purposes. Square footage noted reflects Residential Measurement Standard.



crystalcreekhomes.ca



The Dorchester 44

CRAFTSMAN

1958 SQ FT

2 BEDROOMS | 2 BATHROOMS | 2 CAR GARAGE – FRONT DRIVE

crystalcreekhomes.ca

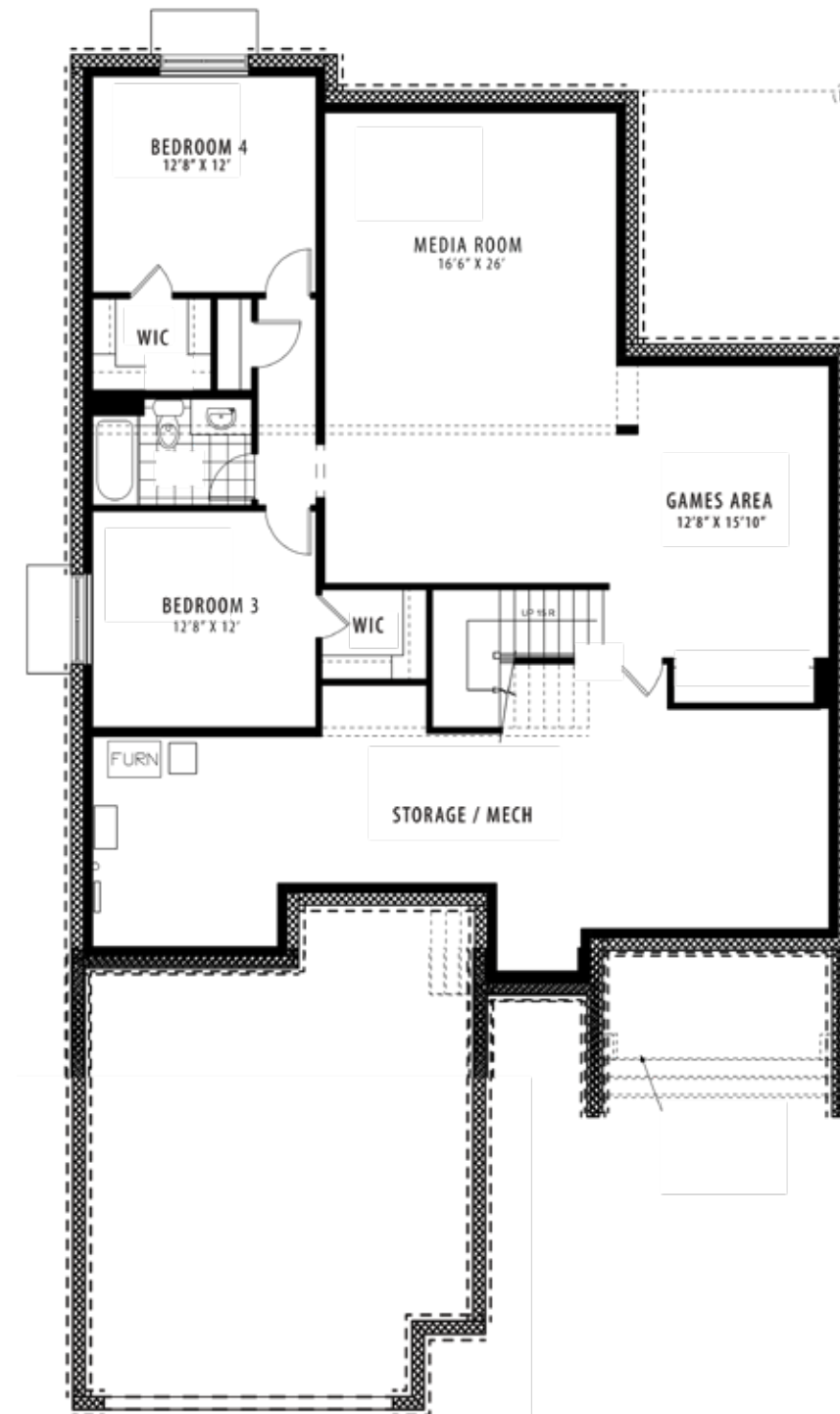
The Dorchester 44

CRAFTSMAN

1958 SQ FT



MAIN FLOOR | 1958 SQ FT



OPTIONAL LOWER FLOOR | 1226 SQ FT

The Rockwell 30

AVAILABLE ELEVATIONS



FRONT ELEVATION **MODERN PRAIRIE**



FRONT ELEVATION **CRAFTSMAN**



FRONT ELEVATION **PRAIRIE**

Please confirm with our Sales Team which elevations are available in your desired community. All elevations, floor plans and dimensions are for illustrative purposes only and are intended to convey a concept and visualization of our homes. They are subject to modifications at any time and are not to be used for contractual purposes. Square footage noted reflects Residential Measurement Standard.



crystalcreekhomes.ca



The Rockwell 30

PRAIRIE **2595** SQ FT

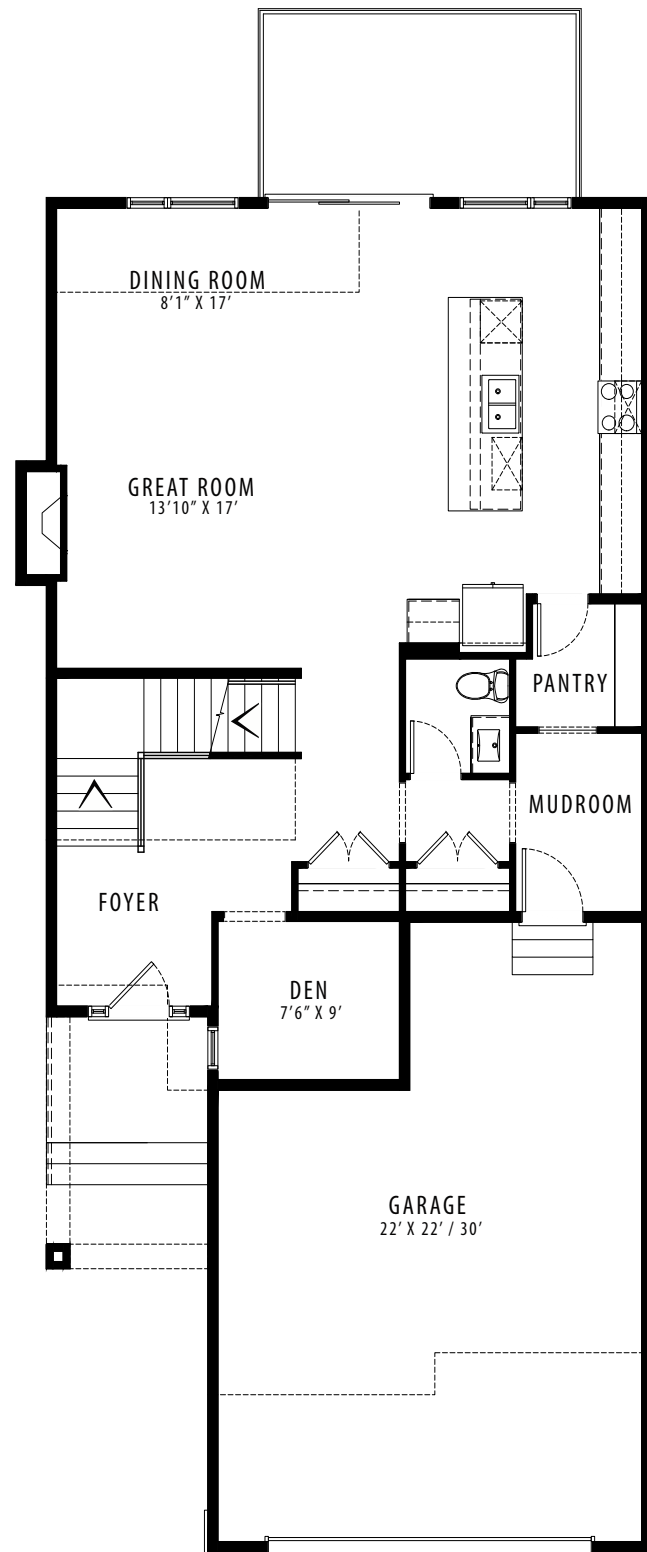
3 BEDROOMS | 2.5 BATHROOMS | 2 CAR TANDEM GARAGE

crystalcreekhomes.ca

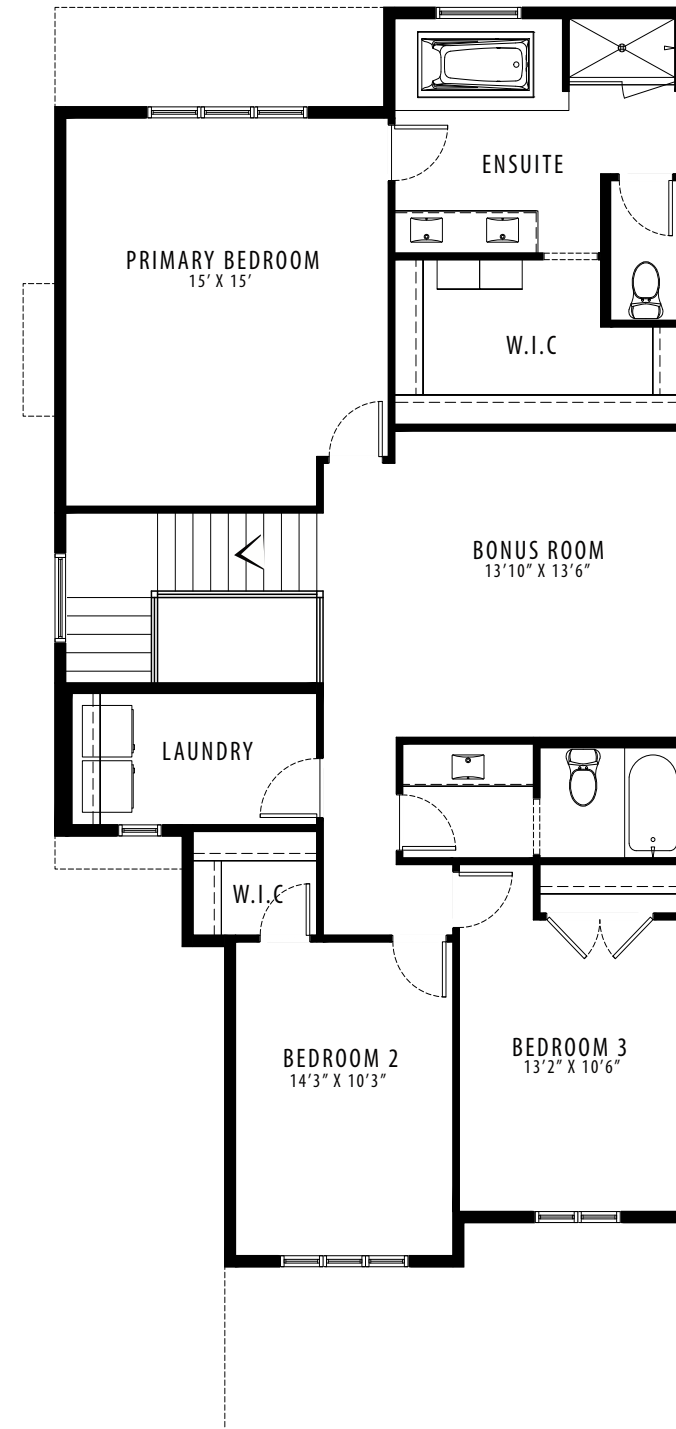
The Rockwell 30

PRAIRIE

2595 SQ FT



MAIN FLOOR | 1151 SQ FT



UPPER FLOOR | 1444 SQ FT

The Everett 28

AVAILABLE ELEVATIONS



FRONT ELEVATION PRAIRIE



FRONT ELEVATION CRAFTSMAN

Please confirm with our Sales Team which elevations are available in your desired community. All elevations, floor plans and dimensions are for illustrative purposes only and are intended to convey a concept and visualization of our homes. They are subject to modifications at any time and are not to be used for contractual purposes. Square footage noted reflects Residential Measurement Standard.



crystalcreekhomes.ca



The Everett 28

MODERN FARMHOUSE 2484 SQ FT

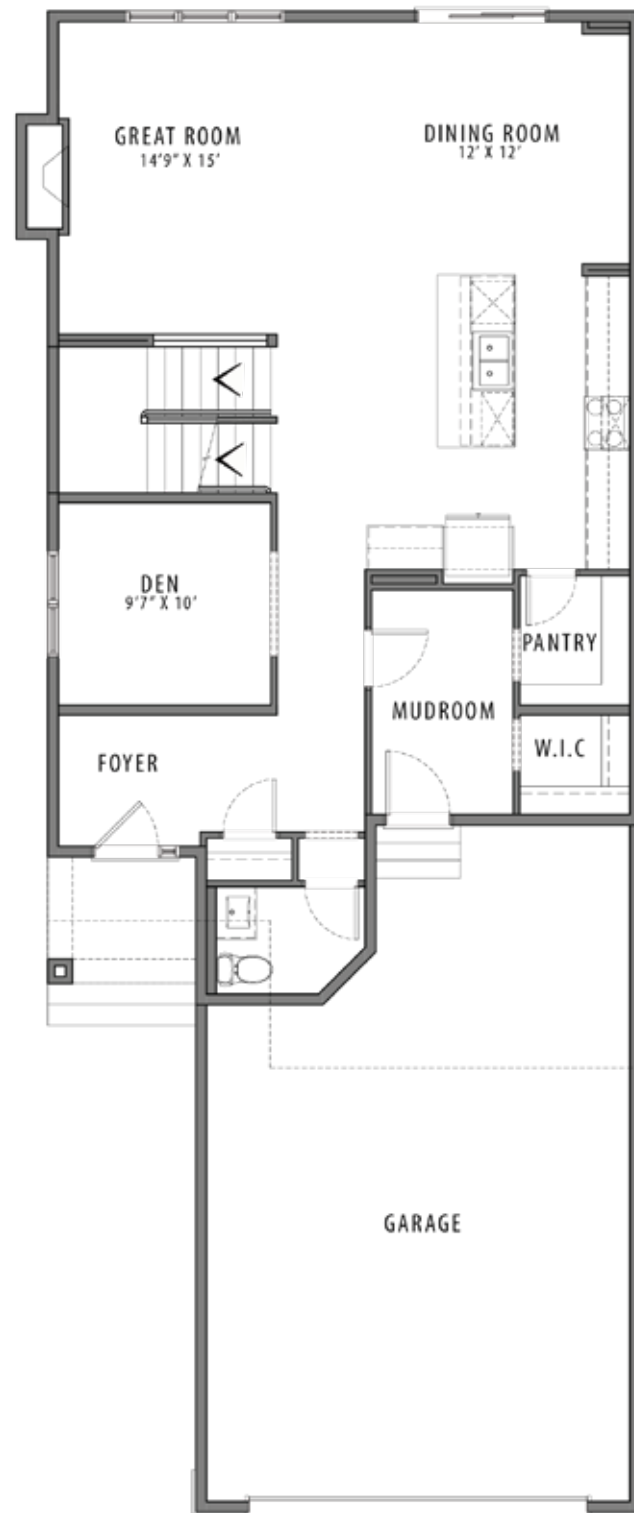
3 BEDROOMS | 2.5 BATHROOMS | 3 CAR TANDEM GARAGE

crystalcreekhomes.ca

The Everett 28

MODERN FARMHOUSE

2484 SQ FT



MAIN FLOOR | 1158 SQ FT



UPPER FLOOR | 1326 SQ FT

The Sheffield 44

AVAILABLE ELEVATIONS



FRONT ELEVATION

PRAIRIE



FRONT ELEVATION

CRAFTSMAN



FRONT ELEVATION

MODERN FARMHOUSE

Please confirm with our Sales Team which elevations are available in your desired community. All elevations, floorplans and dimensions are for illustrative purposes only and are intended to convey a concept and visualization of our homes. They are subject to modifications at any time and are not to be used for contractual purposes. Square footage noted reflects Residential Measurement Standard.



crystalcreekhomes.ca



The Sheffield 44

PRAIRIE

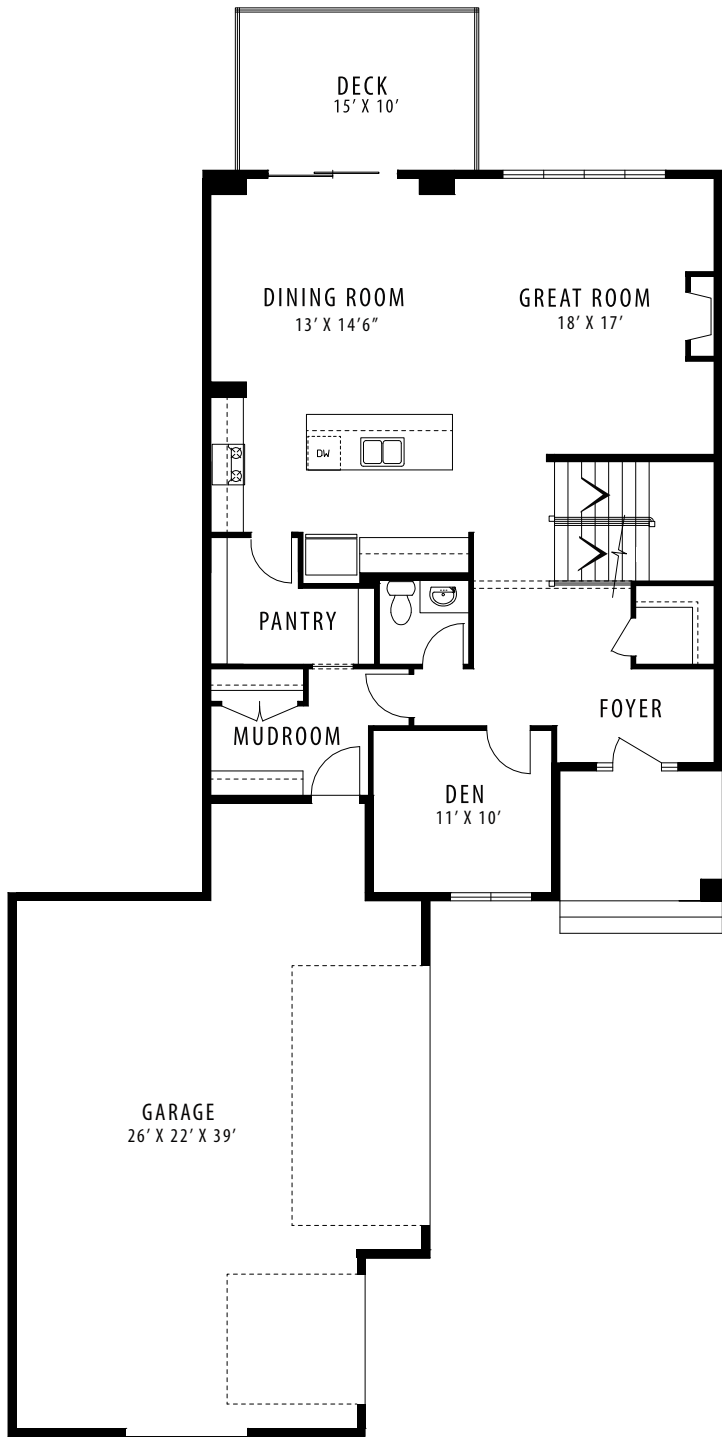
2809 SQ FT

3 BEDROOMS | 2.5 BATHROOMS | 3 CAR GARAGE

crystalcreekhomes.ca

The Sheffield 44

PRAIRIE 2809 SQ FT



MAIN FLOOR | 1300 SQ FT



UPPER FLOOR | 1509 SQ FT

The Grayson 44



Please confirm with our Sales Team which elevations are available in your desired community. All elevations, floorplans and dimensions are for illustrative purposes only and are intended to convey a concept and visualization of our homes. They are subject to modifications at any time and are not to be used for contractual purposes. Square footage noted reflects Residential Measurement Standard.



crystalcreekhomes.ca



The Grayson 44

CRAFTSMAN 3015 SQ FT

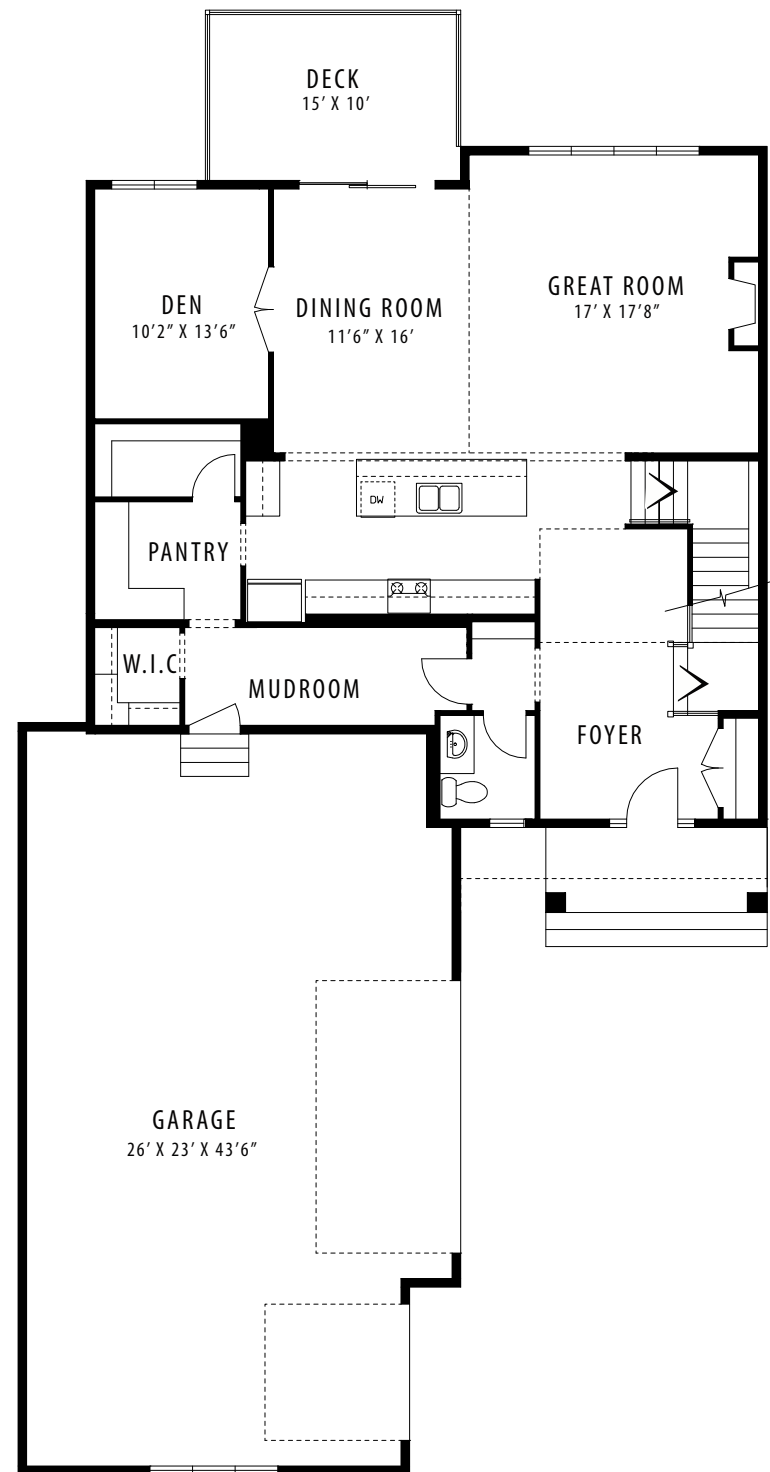
3 BEDROOMS | 2.5 BATHROOMS | 3 CAR GARAGE

crystalcreekhomes.ca

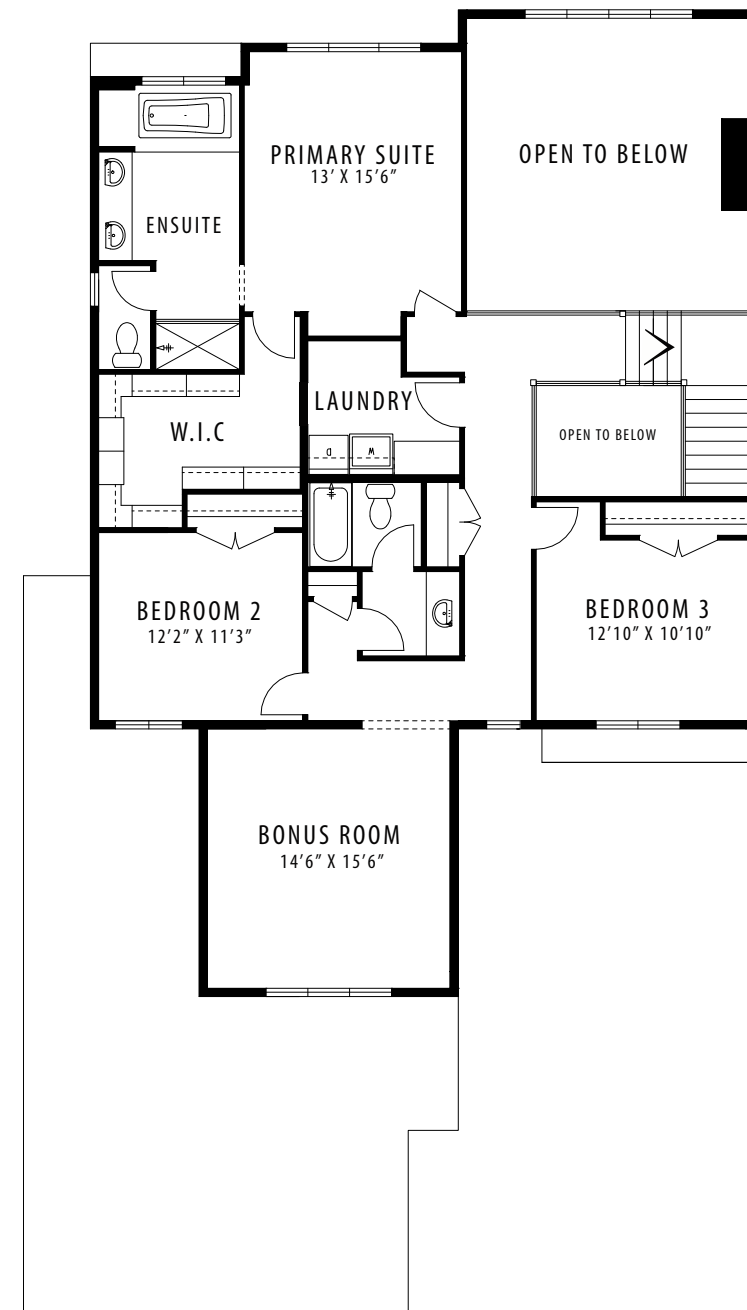
The Grayson 44

CRAFTSMAN

3015 SQ FT



MAIN FLOOR | 1466 SQ FT



UPPER FLOOR | 1549 SQ FT

The Somerside 44



Please confirm with our Sales Team which elevations are available in your desired community. All elevations, floorplans and dimensions are for illustrative purposes only and are intended to convey a concept and visualization of our homes. They are subject to modifications at any time and are not to be used for contractual purposes. Square footage noted reflects Residential Measurement Standard.



crystalcreekhomes.ca



The Somerside 44

PRAIRIE 3211 SQ FT

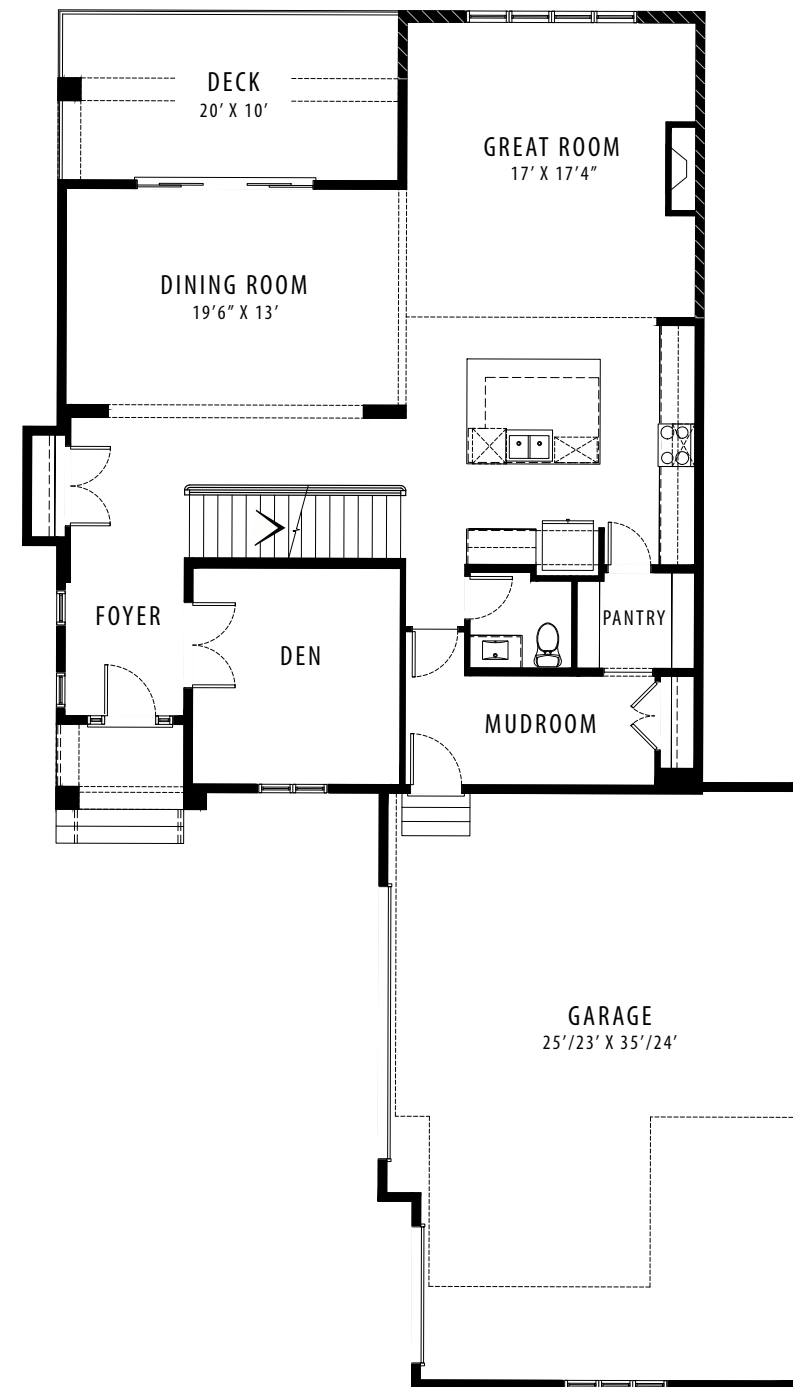
3 BEDROOMS | 2.5 BATHROOMS | 3 CAR GARAGE

crystalcreekhomes.ca

The Somerside 44

PRAIRIE

3211 SQ FT



MAIN FLOOR | 1532 SQ FT



UPPER LEVEL | 1679 SQ FT