

alliston

AT HOME



BAYBERRY

features

- Open Concept Living
- Spacious Kitchen Layout
- Walk-in Kitchen Pantry
- Stainless Steel Appliance Package
- Quartz Countertops Throughout
- Open to Above Main Floor
- Upper Floor Loft
- Spacious Ensuite & W.I.C.
- Upper Floor Laundry
- Attached Double Car Garage
- Triple Pane Windows

2,228 sq. ft.

3 Bed

2.5 Bath

IronLanding
CROSSFIELD, AB.

587-893-3870

ironlanding@allistongroup.ca



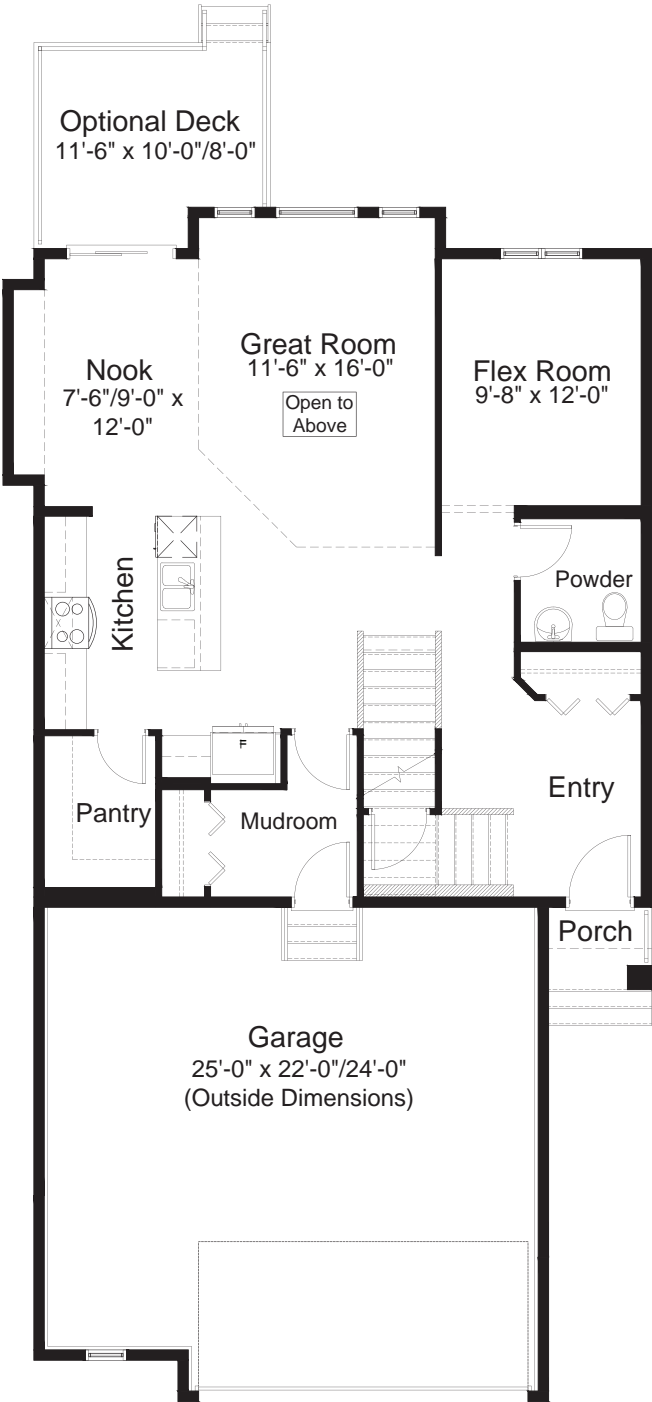
BAYBERRY

3 Bed 2.5 Bath 2,228 sq. ft.

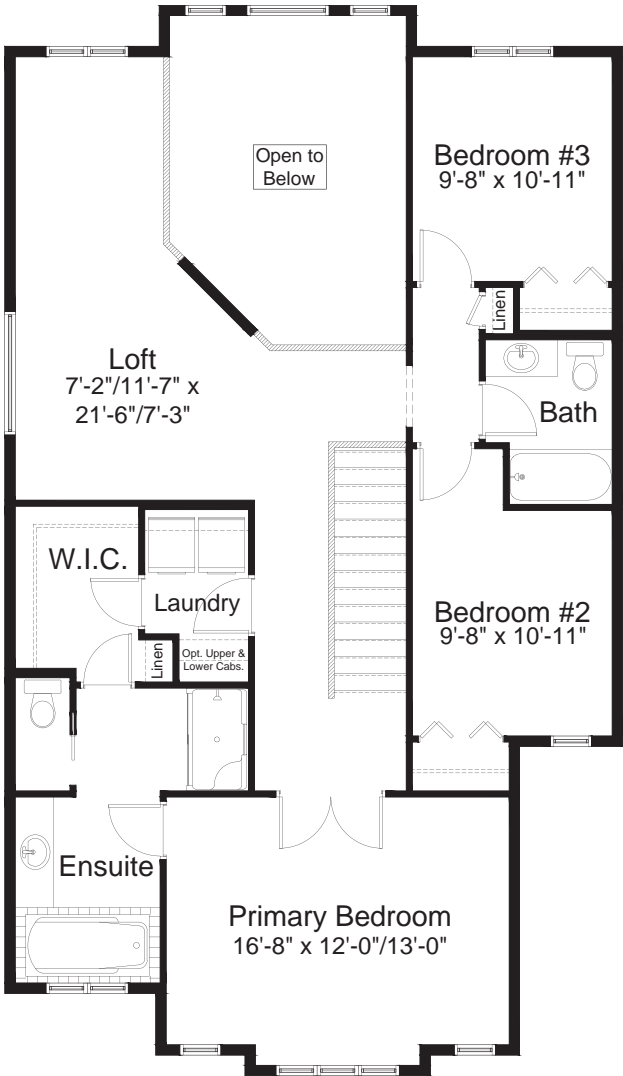
standard plan



CRAFTSMAN ELEVATION

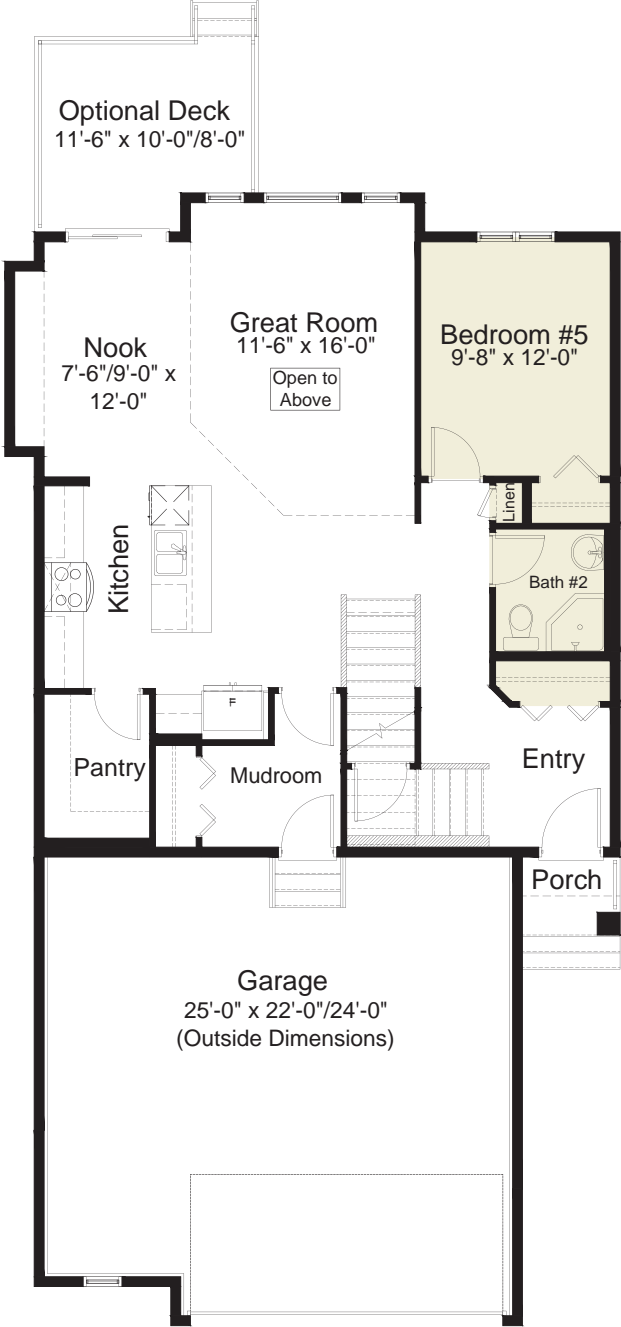


MAIN FLOOR 1,000 sq. ft.

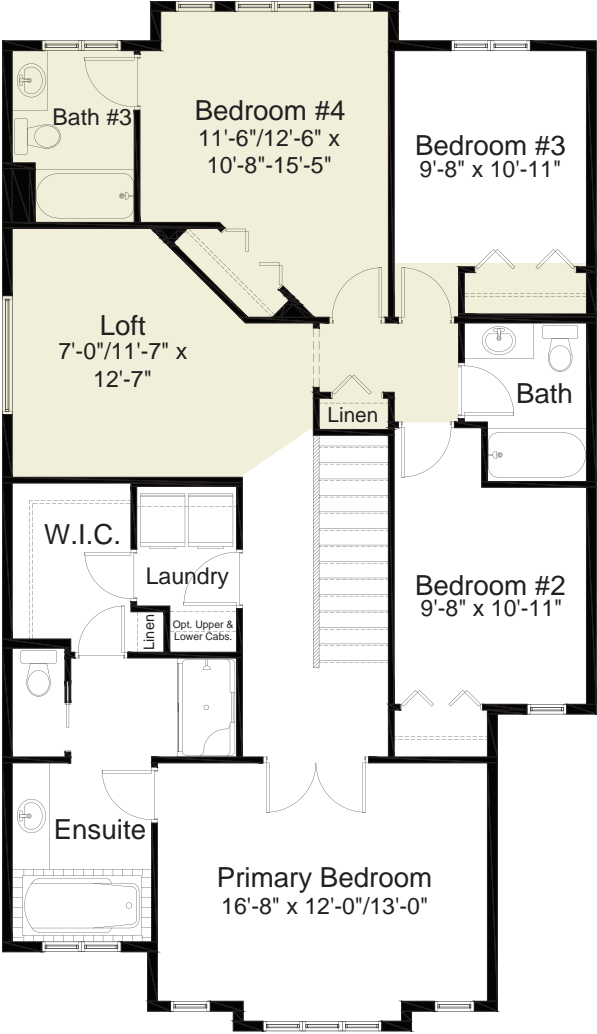


UPPER FLOOR 1,228 sq. ft.

pre-planned options



Main Floor Bedroom Option
1,000 sq. ft.



Fourth Bedroom Option
Upper Floor: 1,407 sq. ft.



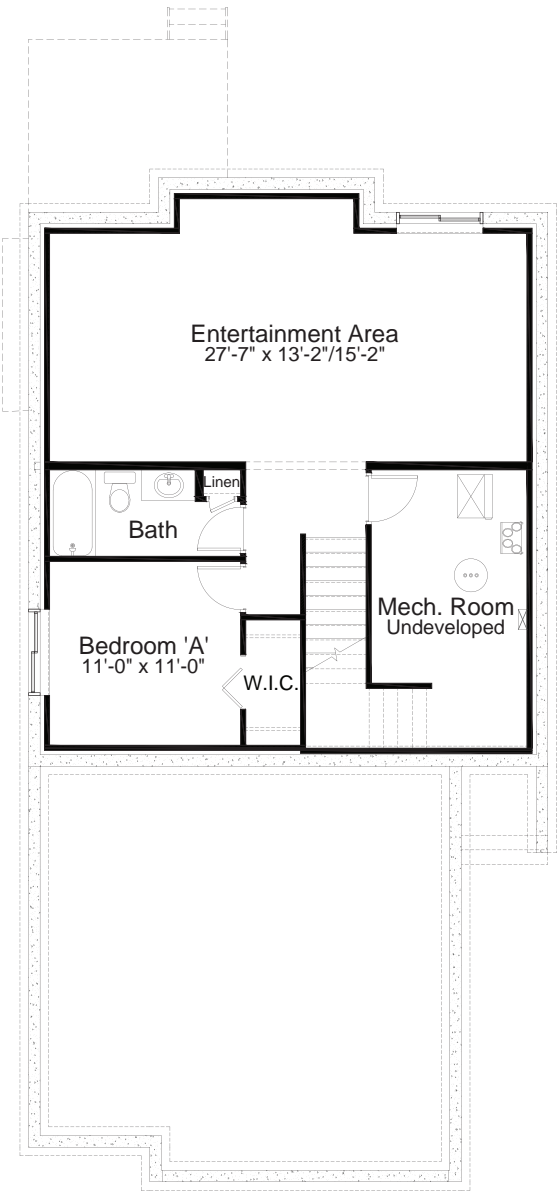
BAYBERRY

3 Bed 2.5 Bath 2,228 sq. ft.

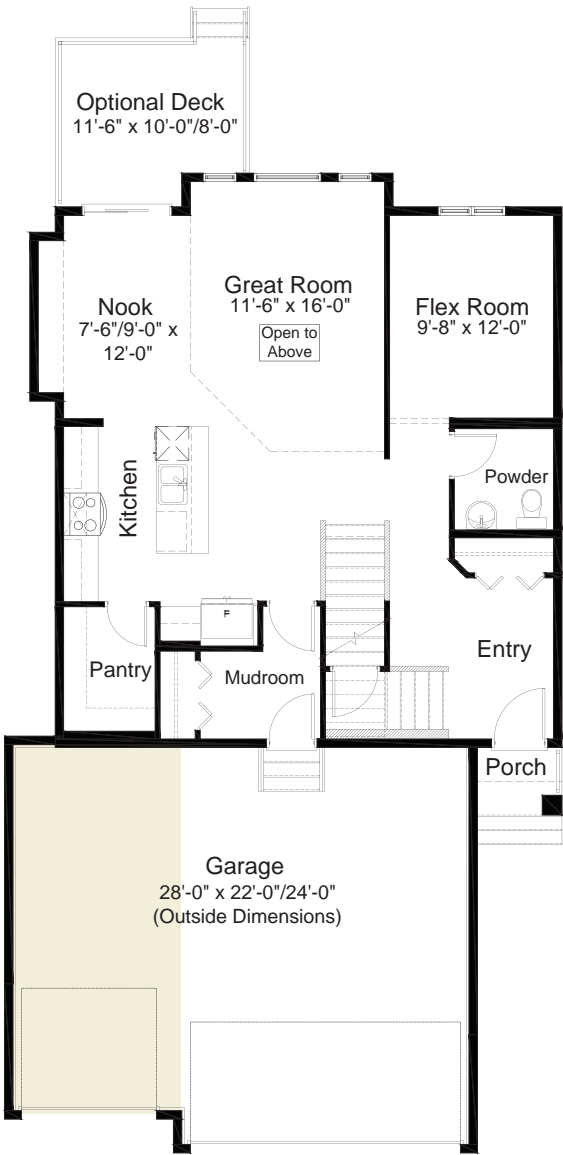
pre-planned options



TRIPLE CAR GARAGE ELEVATION



Basement Development Option
696 sq. ft.



Triple Car Garage Option
Main Floor: 1,000 sq. ft.

Edited: February 19, 2025
The builder reserves the right to modify or change plans, specifications, features and prices without notice. Materials may be substituted with equivalent or better at the builder's sole discretion. All dimensions and sizes are approximate and are based on architectural measurements. As reverse, mirrored and/or flipped plans occur throughout the building, please see architectural plans if material to your decision to purchase. Renderings, furnishings and equipment shown are an artist's conception and are intended as a general reference only. Please see disclosure statement for specific offering details. E. & O.E.

alliston

AT HOME



BERKELEY

features

- Open Concept Living
- Spacious Kitchen Layout
- Walk-thru Kitchen Pantry
- Open-to-above Entry
- Stainless Steel Appliance Package
- Quartz Countertops Throughout
- Mudroom
- Spacious Ensuite and W.I.C.
- Upper Floor Bonus Room
- Upper Floor Laundry Room
- Triple Pane Windows
- Attached Double Car Garage

2,015 sq. ft.

3 Bed

2.5 Bath

IronLanding
CROSSFIELD, AB.

587-893-3870

ironlanding@allistongroup.ca



BERKELEY

3 Bed 2.5 Bath 2,015 sq. ft.

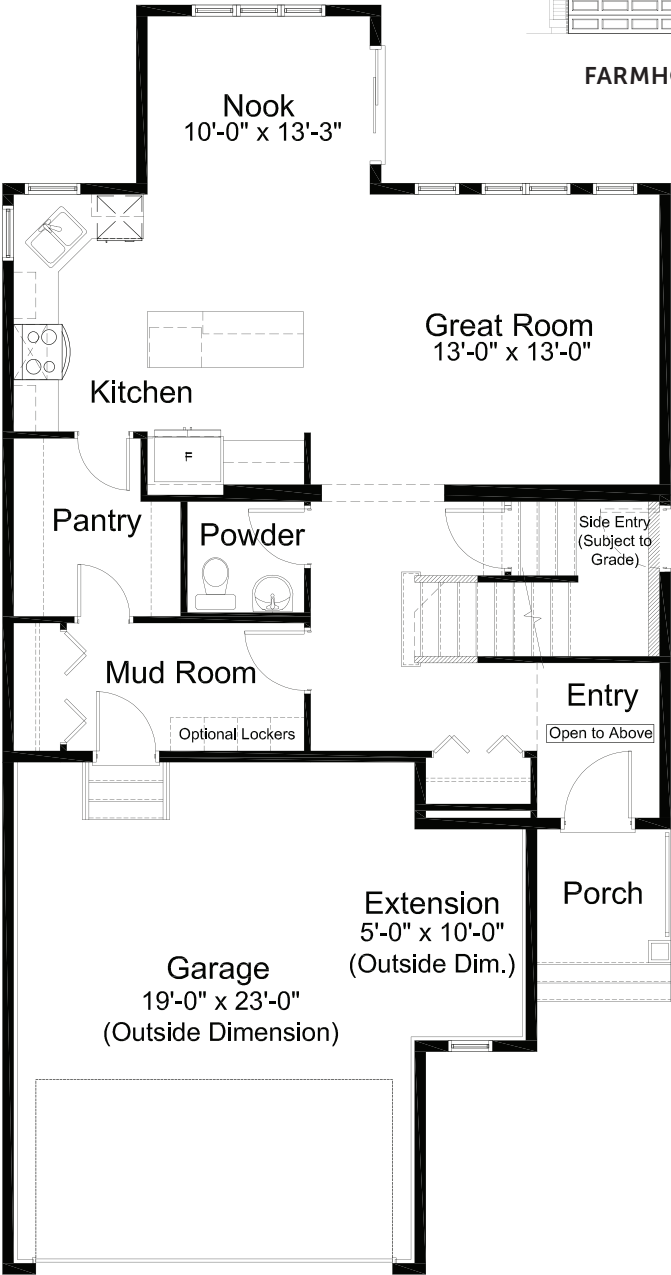
standard plan



FARMHOUSE ELEVATION



PRAIRIE ELEVATION



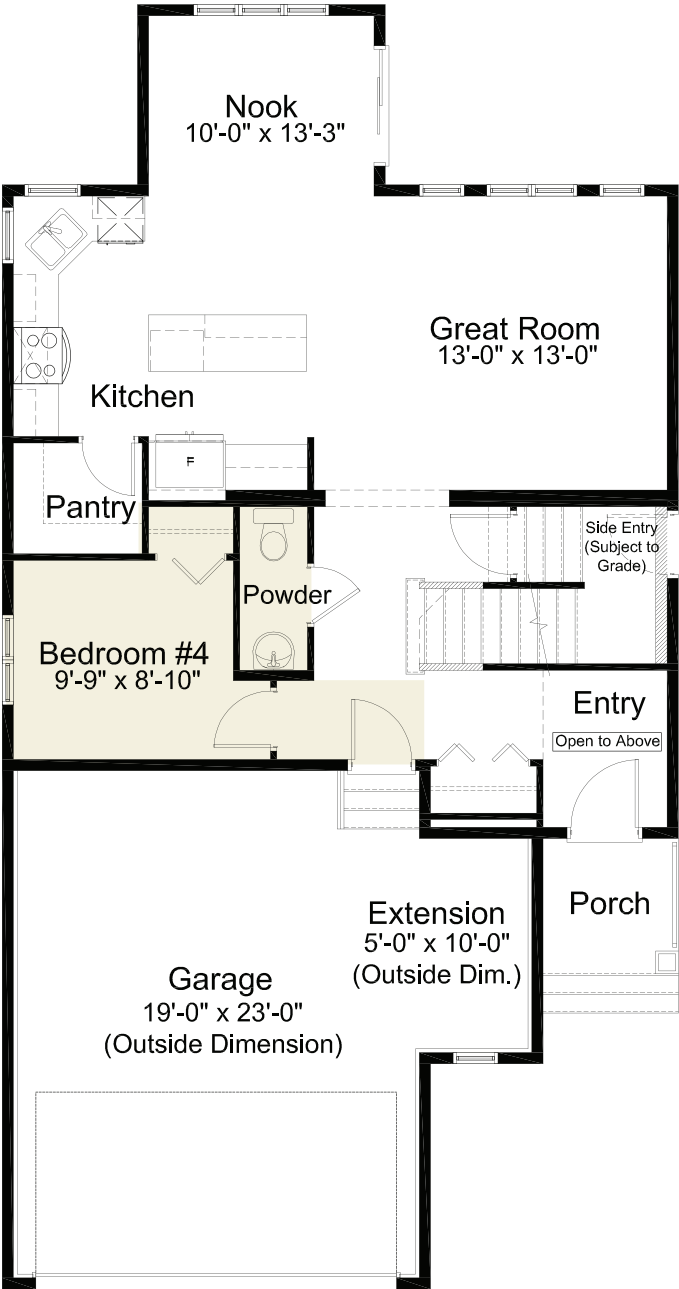
MAIN FLOOR 902 sq. ft.



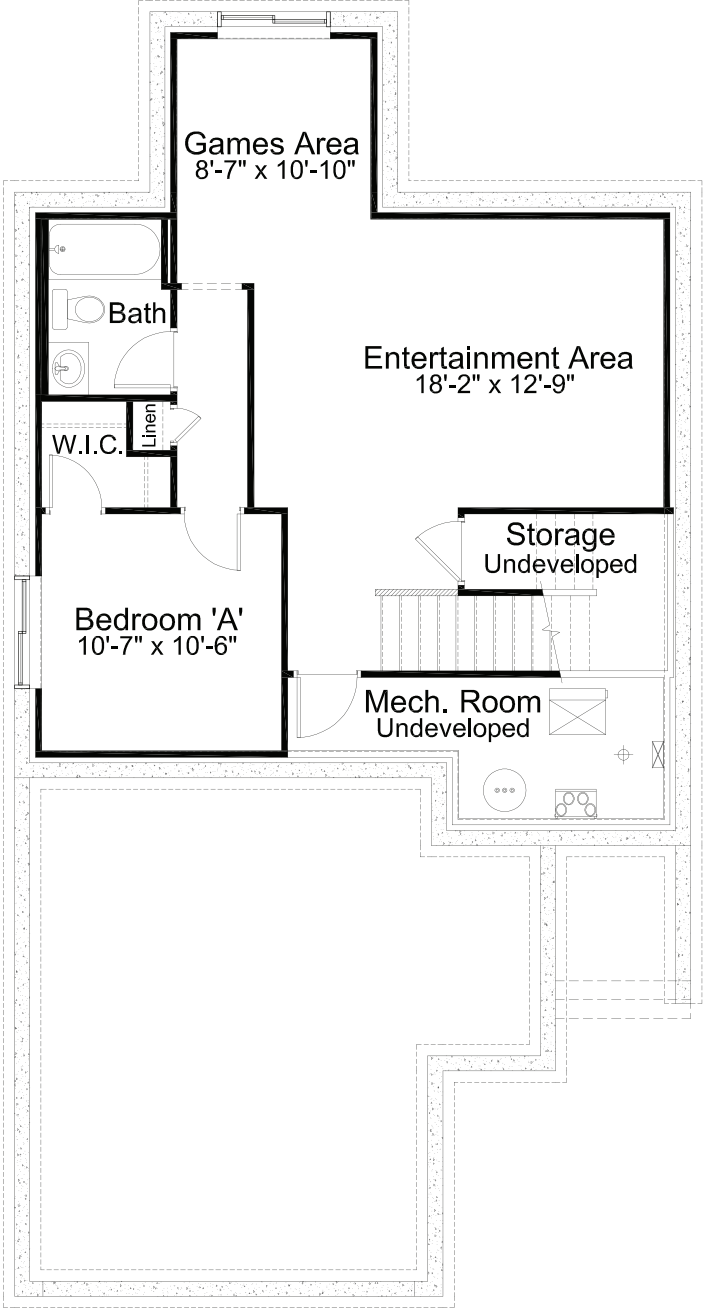
UPPER FLOOR 1,113 sq. ft.



pre-planned options



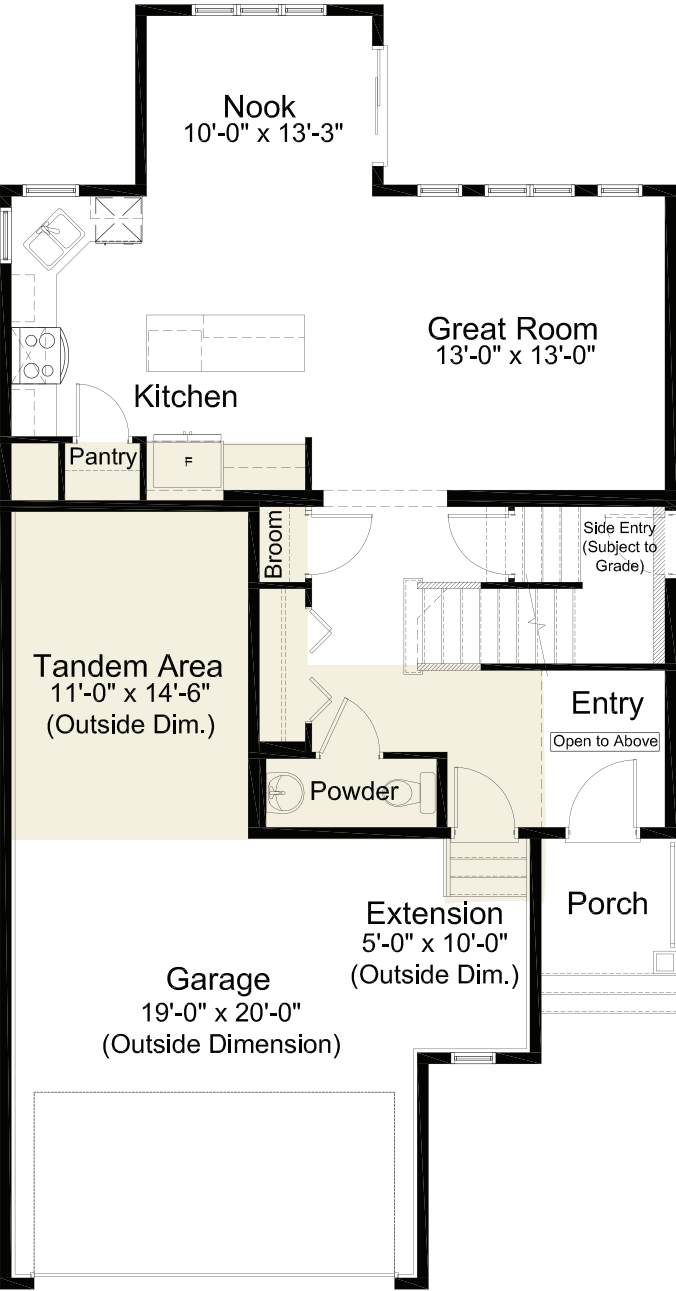
4th Bedroom Option
main floor: 902 sq. ft.



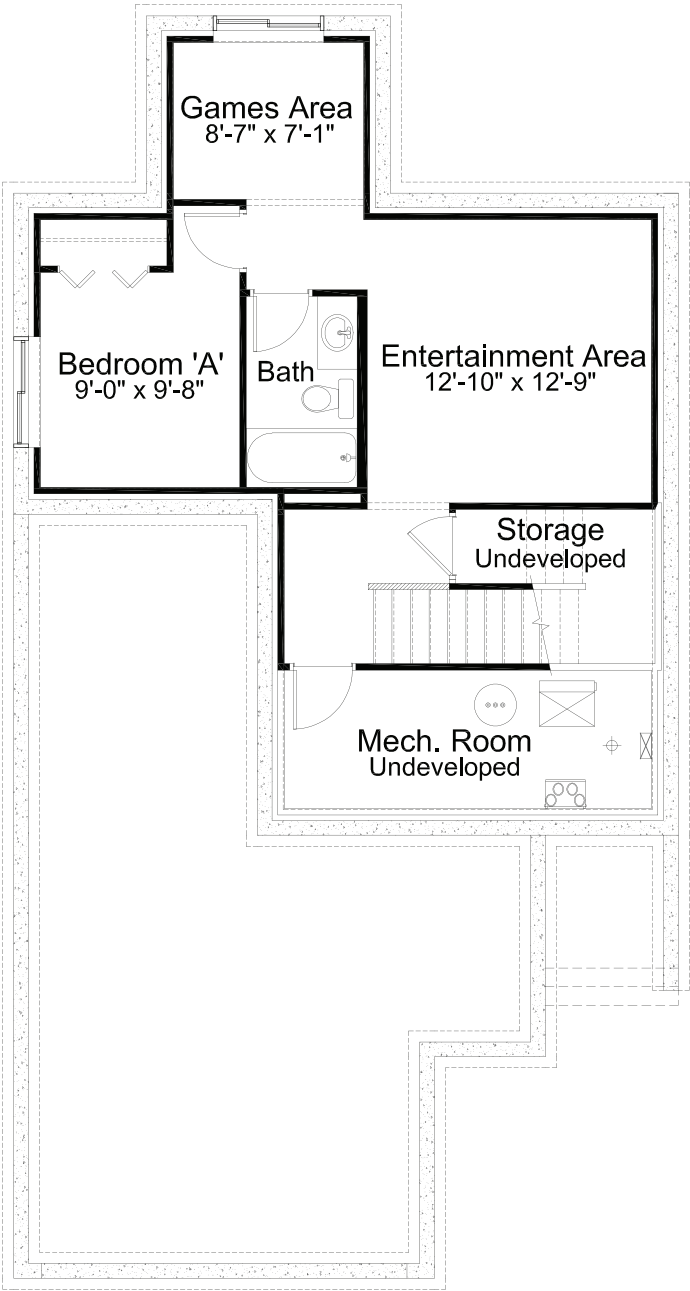
Basement Development Option
638 sq. ft.



pre-planned options



Tandem Garage Option
main floor: 798 sq. ft.



**Basement Development Option
for Tandem Garage Option**
510 sq. ft.

Edited: February 19, 2025
The builder reserves the right to modify or change plans, specifications, features and prices without notice. Materials may be substituted with equivalent or better at the builder's sole discretion. All dimensions and sizes are approximate and are based on architectural measurements. As reverse, mirrored and/or flipped plans occur throughout the building, please see architectural plans if material to your decision to purchase. Renderings, furnishings and equipment shown are an artist's conception and are intended as a general reference only. Please see disclosure statement for specific offering details. E. & O.E.

alliston

AT HOME



standard elevation shown

WILLOW

features

- Open Concept Living
- Spacious Kitchen Layout
- Walk-thru Kitchen Pantry
- Stainless Steel Appliance Package
- Quartz Countertops Throughout
- Pocket Office
- Triple Pane Windows
- Upper Floor Laundry
- Spacious Ensuite & W.I.C.
- Attached Double Car Garage

1,725 sq. ft.

3 Bed

2.5 Bath

Iron Landing
CROSSFIELD, AB.

587-893-3870

ironlanding@allistongroup.ca



WILLOW

3 Bed

2.5 Bath

1,725 sq. ft.

standard plan



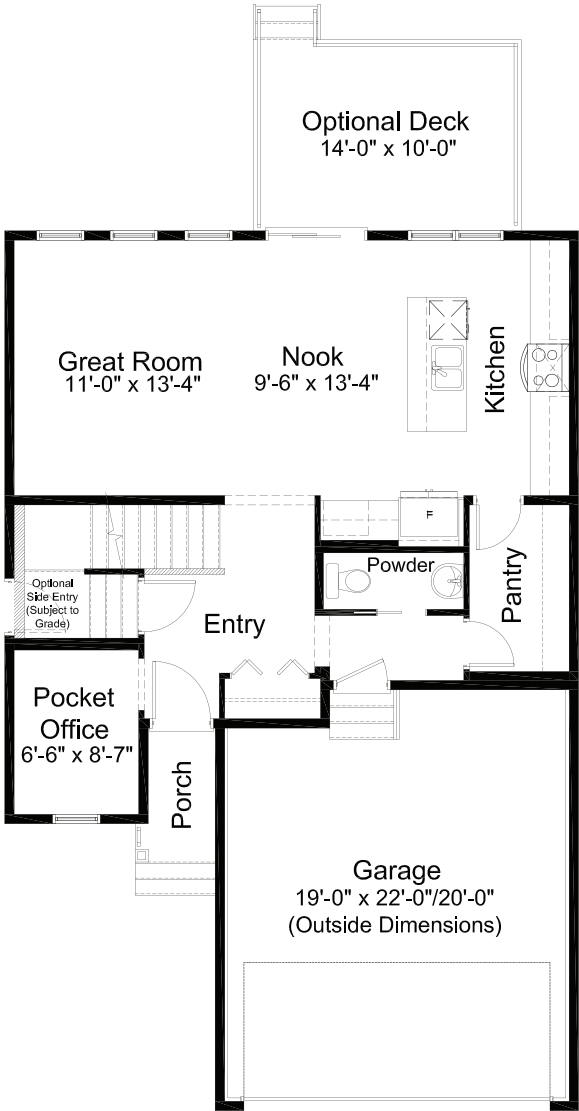
FARMHOUSE ELEVATION



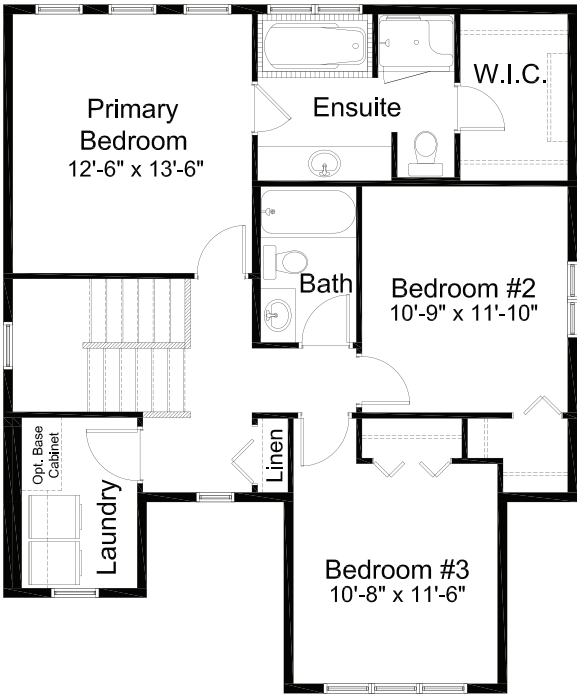
CRAFTSMAN ELEVATION



FARMHOUSE (BONUS ROOM)
ELEVATION



MAIN FLOOR 791 sq. ft.



UPPER FLOOR 934 sq. ft.
(Compatible w/ Mudroom Option)



WILLOW (BONUS ROOM)

3 Bed

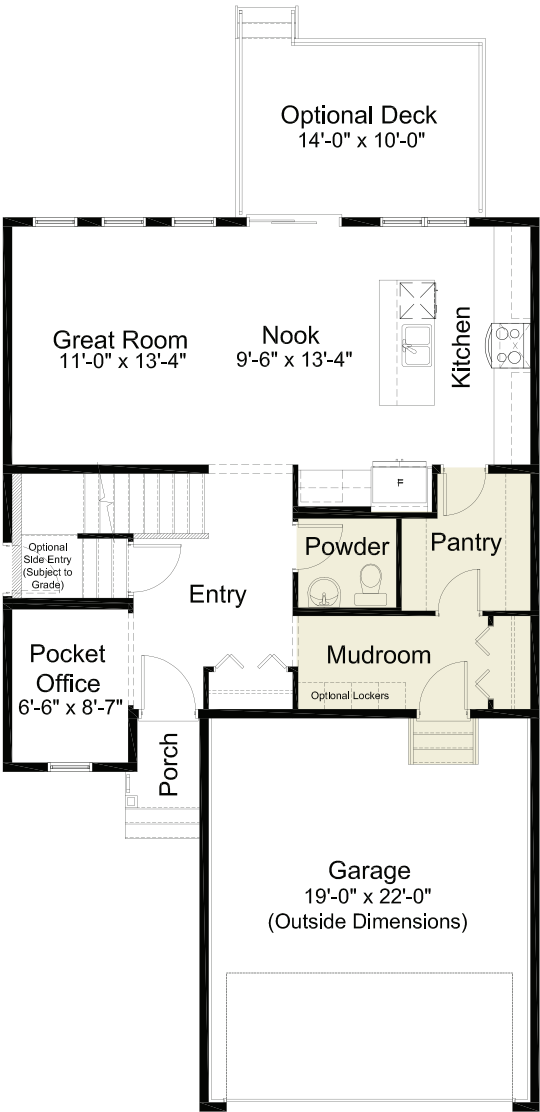
2.5 Bath

1,935 sq. ft.

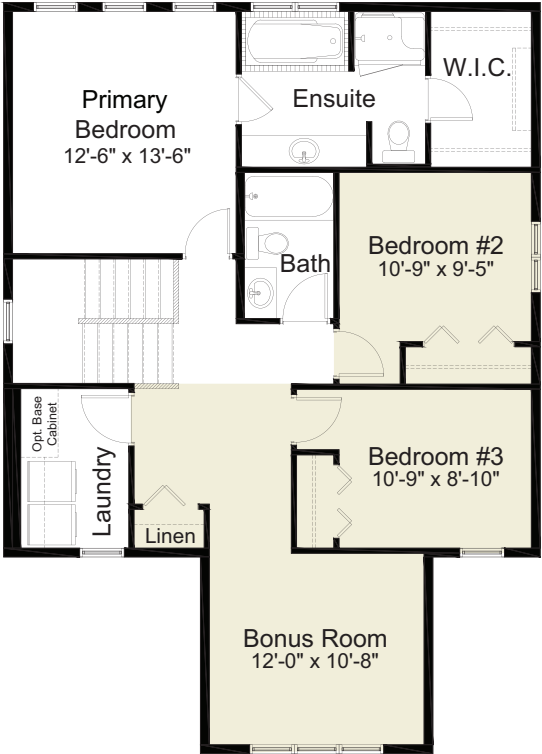
alternate pre-planned option



FARMHOUSE BONUS ROOM ELEVATION



Mudroom Option
Main Floor: 862 sq. ft.



Bonus Room Option
Upper Floor: 1,073 sq. ft.

(Compatible w/ Base Plan & Mudroom Option)

[see all options](#)



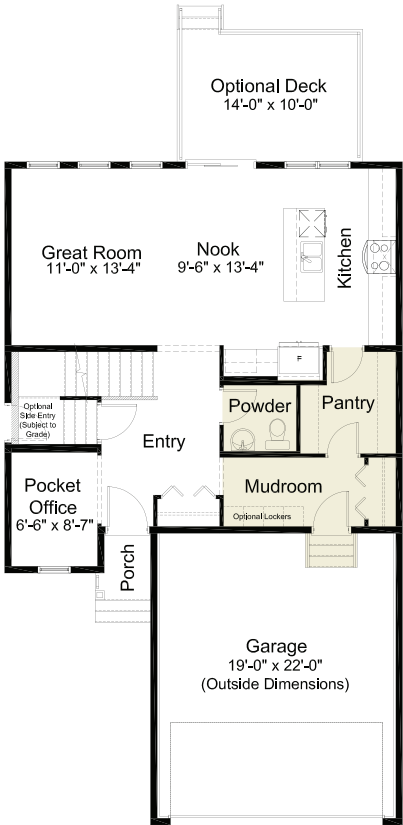
WILLOW

3 Bed

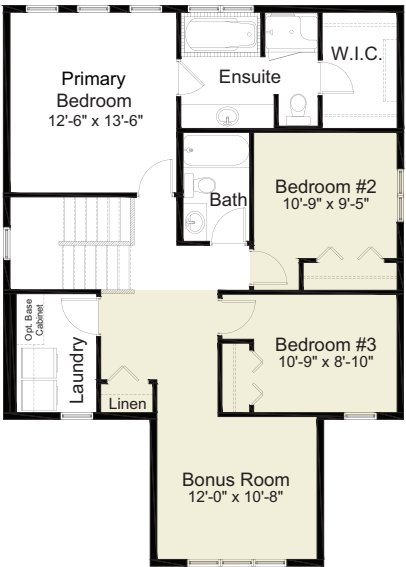
2.5 Bath

1,725 sq. ft.

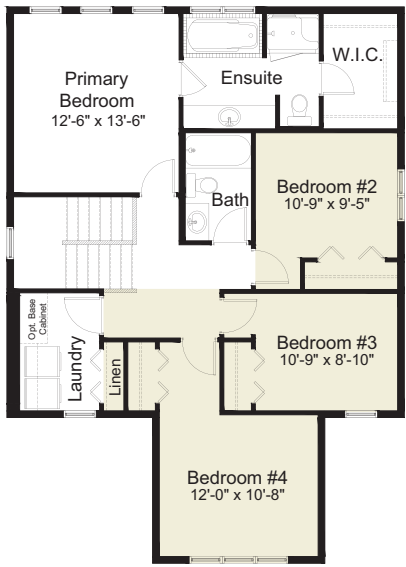
all pre-planned options



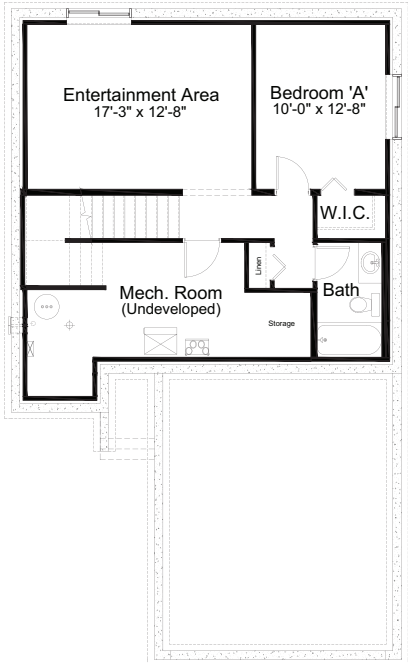
Mudroom Option
Main Floor: 862 sq. ft.



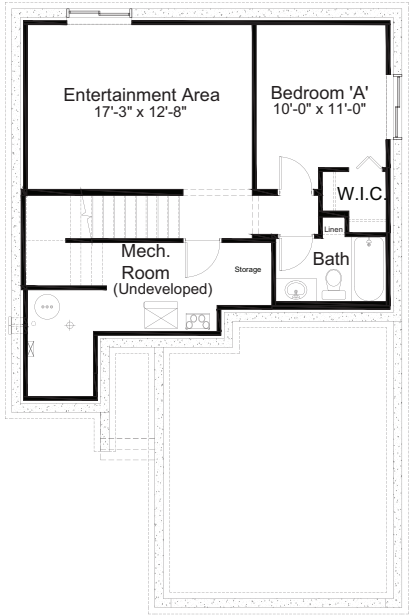
Bonus Room Option
Upper Floor: 1,073 sq. ft.
(Compatible w/
Base Plan & Mudroom Option)



4th Bedroom Option
Upper floor: 1,073 sq. ft.
(Compatible w/
Base Plan & Mudroom Option)



←
**Basement Development
Option for Extended
Mudroom Option**
530 sq. ft.



→
**Basement Development
Option**
502 sq. ft.

Edited: April 29, 2025
The builder reserves the right to modify or change plans, specifications, features and prices without notice. Materials may be substituted with equivalent or better at the builder's sole discretion. All dimensions and sizes are approximate and are based on architectural measurements. As reverse, mirrored and/or flipped plans occur throughout the building, please see architectural plans if material to your decision to purchase. Renderings, furnishings and equipment shown are an artist's conception and are intended as a general reference only. Please see disclosure statement for specific offering details. E & O.E.

alliston

AT HOME



BOWERY

features

- Open Concept Living
- Spacious Kitchen Layout
- Stainless Steel Appliance Package
- Quartz Countertops Throughout
- Upper Floor Loft
- Upper Floor Laundry
- Triple Pane Windows

1,598 sq. ft.

3 Bed

2.5 Bath

Iron Landing
CROSSFIELD, AB.

587-893-3870

ironlanding@allistongroup.ca



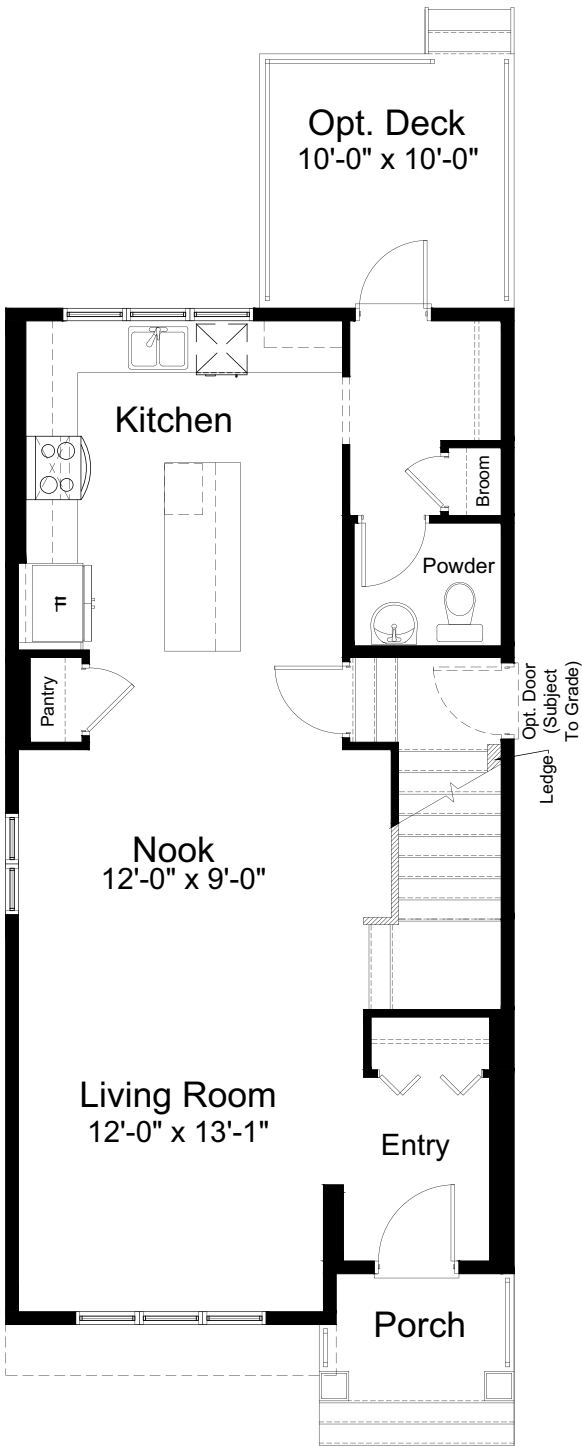
BOWERY

3 Bed 2.5 Bath 1,598 sq. ft.

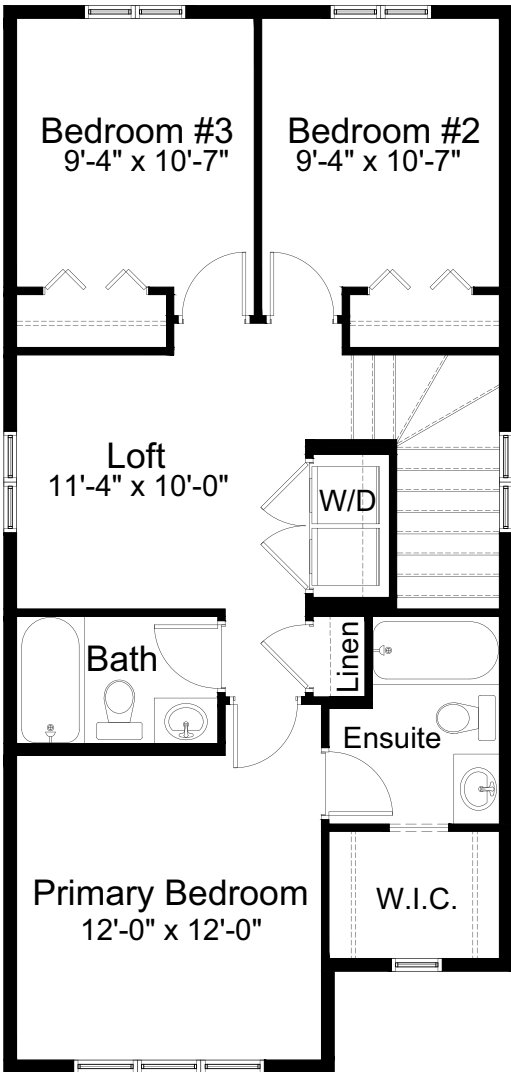
standard plan



CRAFTSMAN #1 ELEVATION



MAIN FLOOR 786 sq. ft.



UPPER FLOOR 812 sq. ft.

Edited: October 31, 2024
The builder reserves the right to modify or change plans, specifications, features and prices without notice. Materials may be substituted with equivalent or better at the builder's sole discretion. All dimensions and sizes are approximate and are based on architectural measurements. As reverse, mirrored and/or flipped plans occur throughout the building, please see architectural plans if material to your decision to purchase. Renderings, furnishings and equipment shown are an artist's conception and are intended as a general reference only. Please see disclosure statement for specific offering details. E. & O.E.

alliston

AT HOME



CASCARA bungalow

features

- Open Concept Living
- Spacious Kitchen Layout
- Walk-in Kitchen Pantry
- Stainless Steel Appliance Package
- Quartz Countertops Throughout
- Mudroom
- Spacious Ensuite
- Triple Pane Windows
- Dropped Ceiling Detail
- Attached Double Car Garage

1,278 sq. ft.

2 Bed

2 Bath

Iron Landing
CROSSFIELD, AB.

587-893-3870

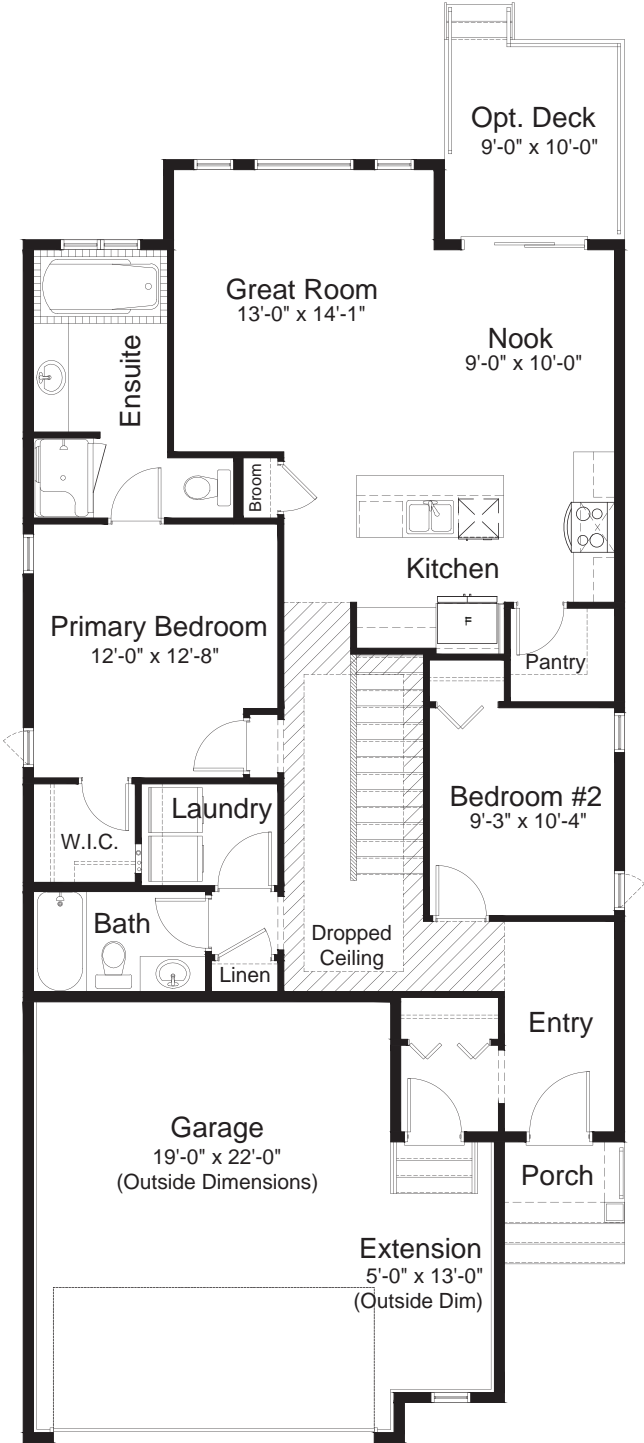
ironlanding@allistongroup.ca



CASCARA BUNGALOW

2 Bed 2 Bath 1,278 sq. ft.

standard plan



MAIN FLOOR 1,278 sq. ft.



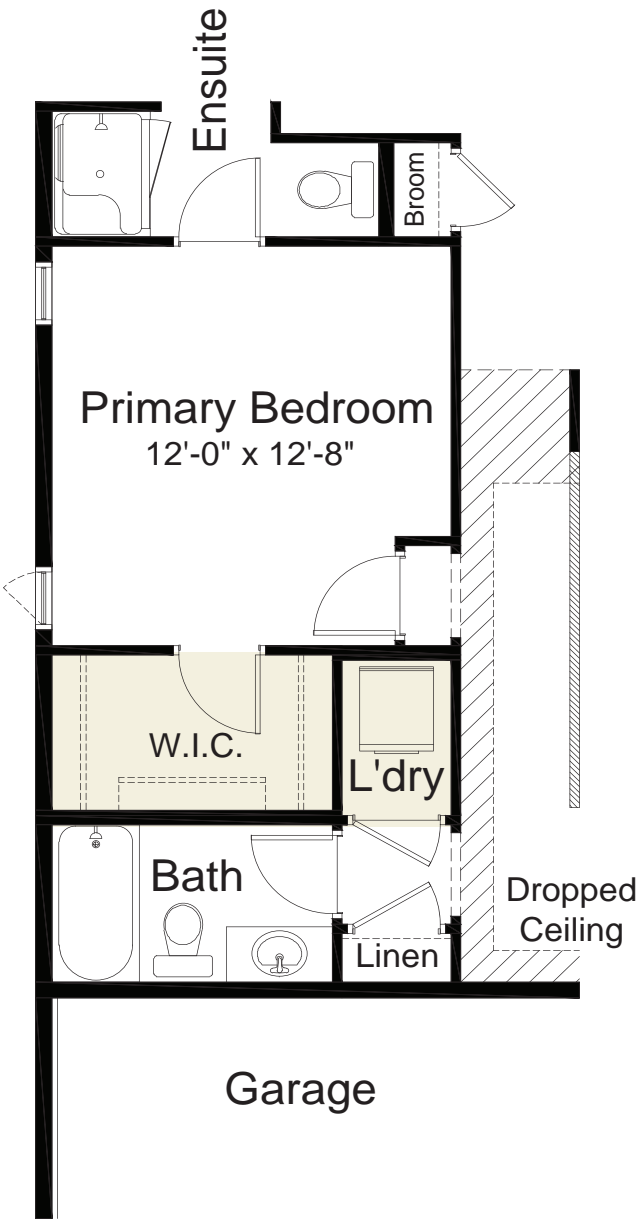
FARMHOUSE ELEVATION



CRAFTSMAN ELEVATION



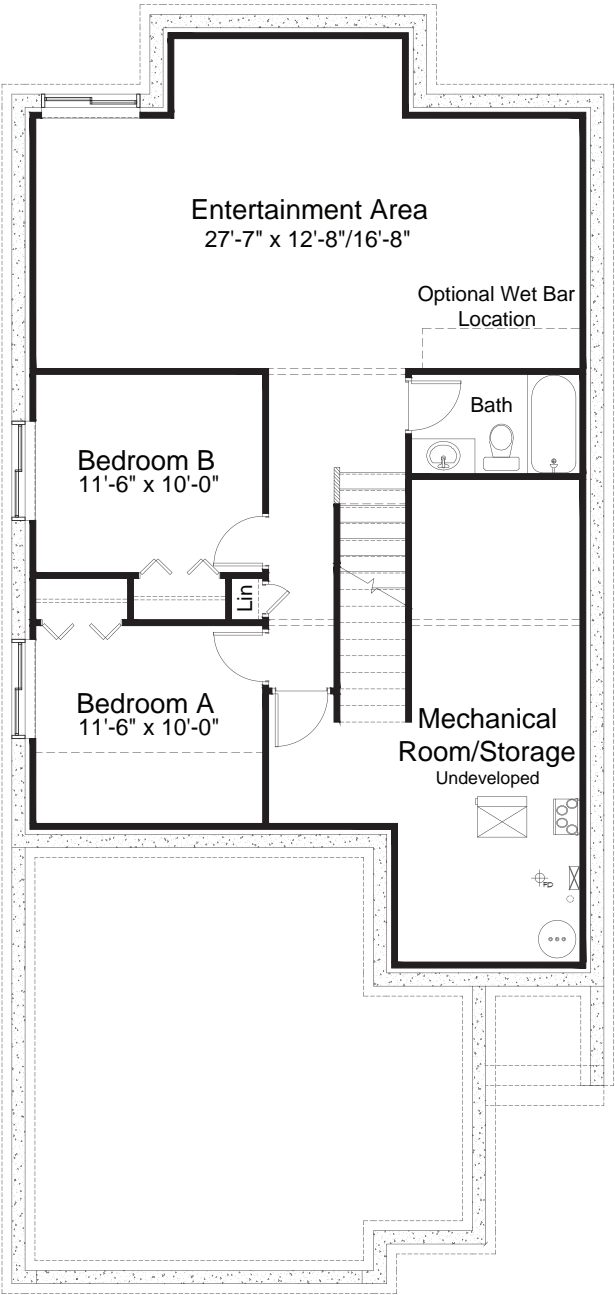
pre-planned options



Expanded WIC and Stackable
Laundry Option



pre-planned options



Basement Development Option
848 sq. ft.

Edited: February 25, 2025
The builder reserves the right to modify or change plans, specifications, features and prices without notice. Materials may be substituted with equivalent or better at the builder's sole discretion. All dimensions and sizes are approximate and are based on architectural measurements. As reverse, mirrored and/or flipped plans occur throughout the building, please see architectural plans if material to your decision to purchase. Renderings, furnishings and equipment shown are an artist's conception and are intended as a general reference only. Please see disclosure statement for specific offering details. E. & O.E.