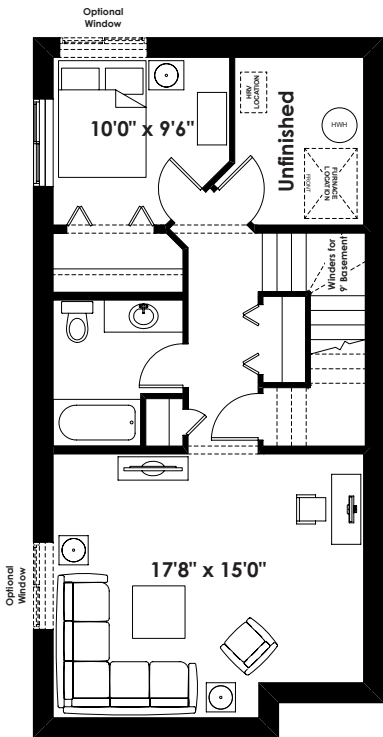


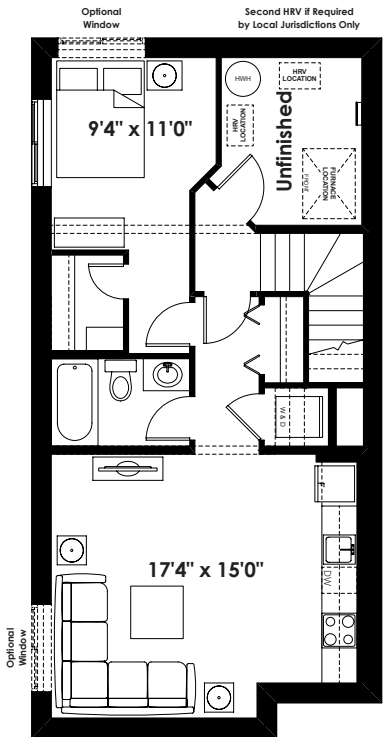
FLOOR PLAN OPTIONS

20'

THE LEONARD
1,608+ SQ FT | 3 BED + LOFT | 2.5 BATH

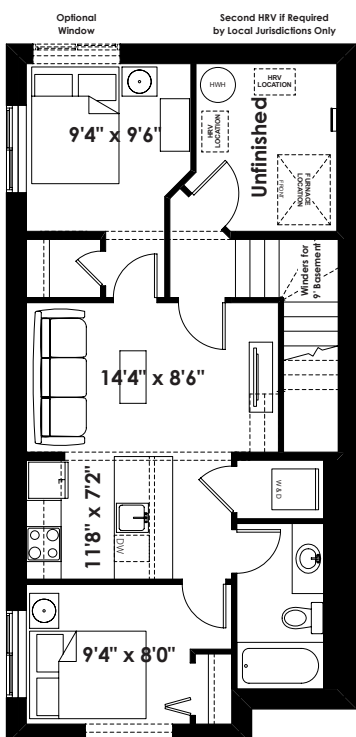


LEONARD
Optional 1 Bedroom
Basement Room Layout
567 Sq. Ft. (Finished Area)



LEONARD
Optional 1 Bedroom
Basement Suite Layout
577 Sq. Ft. (Finished Area;
Must Add Optional Side Entry;
Must Add 9' Foundation Walls;
Not Available with Dropped Entries)

BASEMENT SUITE MAY NOT CONFORM
TO ALL MUNICIPALITIES;
LAND USE BY-LAW & CODE MUST BE
REVIEWED PRIOR TO ACCEPTANCE



LEONARD
Optional 2 Bedroom
Basement Suite Layout
571 Sq. Ft. (Finished Area;
Must Add Optional Side Entry;
Not Available with Dropped Entries)

BASEMENT SUITE MAY NOT CONFORM
TO ALL MUNICIPALITIES;
LAND USE BY-LAW & CODE MUST BE
REVIEWED PRIOR TO ACCEPTANCE



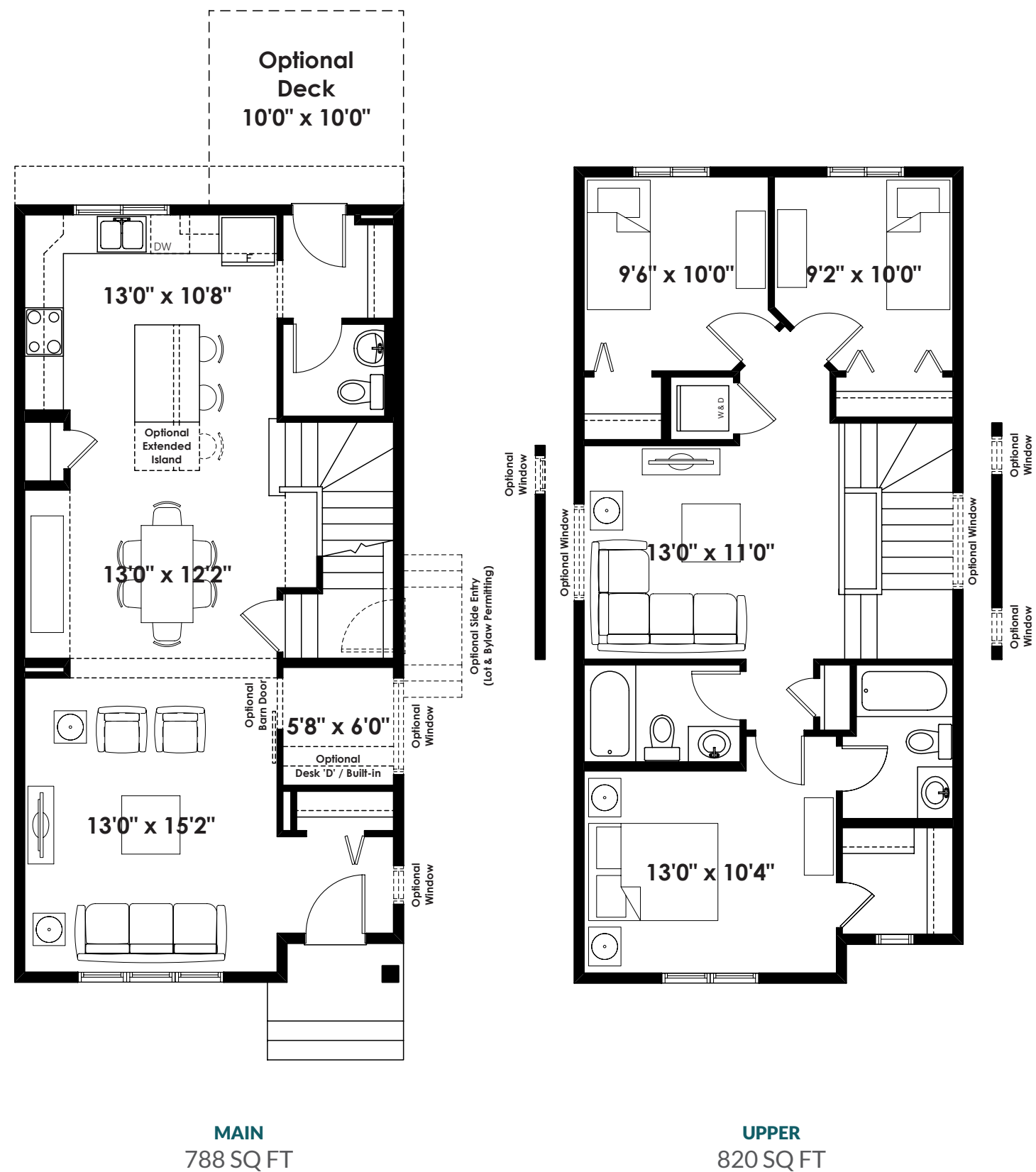
Prices are subject to change without notice. Actual floor plan, elevation, and square footage may not be exactly as shown. Square footage is measured to Alberta Building Code (ABC) regulations. Builder reserves the right to make changes without notice. E&OE.



BETTER VALUE BY DESIGN
SINCE 1978 | HOMESBYAVI.COM



BASE FLOOR PLAN



FLOOR PLAN OPTIONS



ADDITIONAL
OPTIONS

20'

THE ALEXANDER

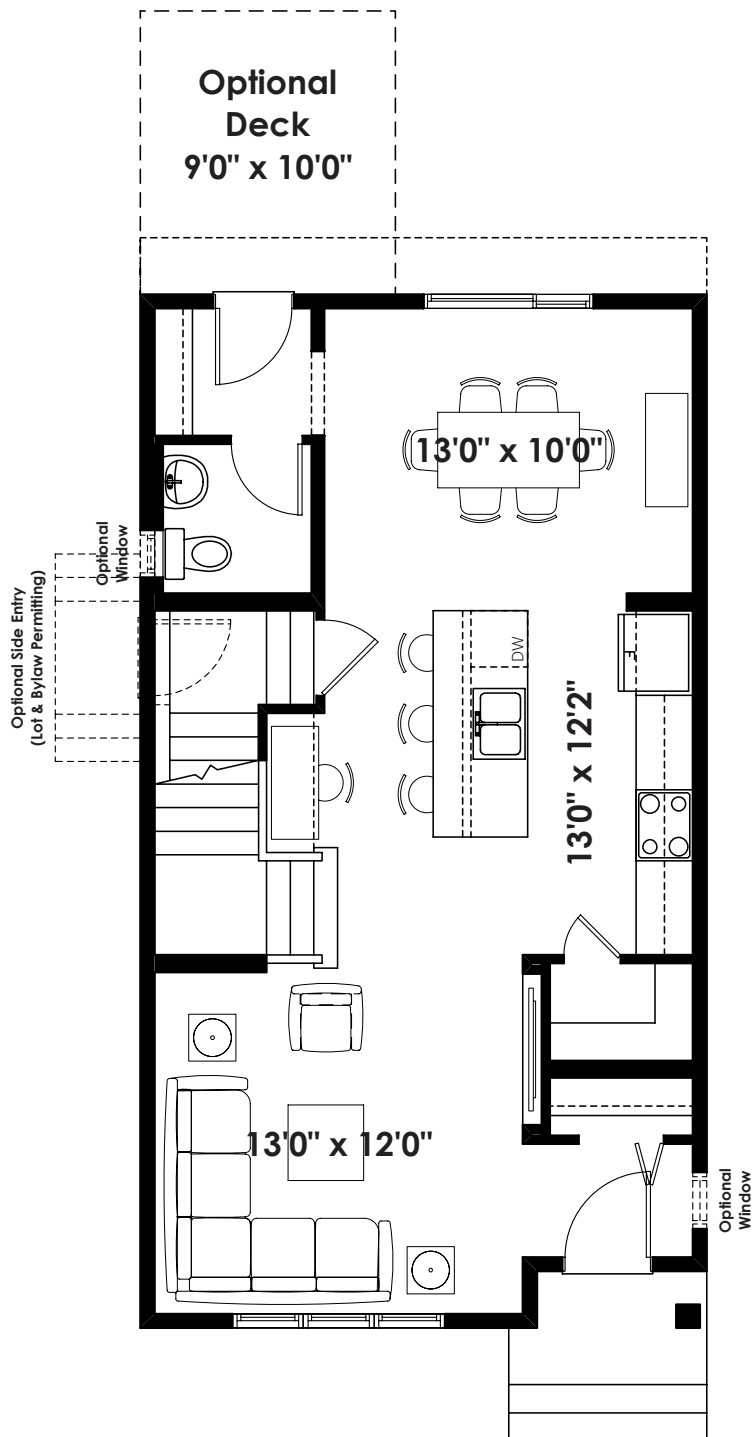
1,468+ SQ FT | 3 BED | 2.5 BATH



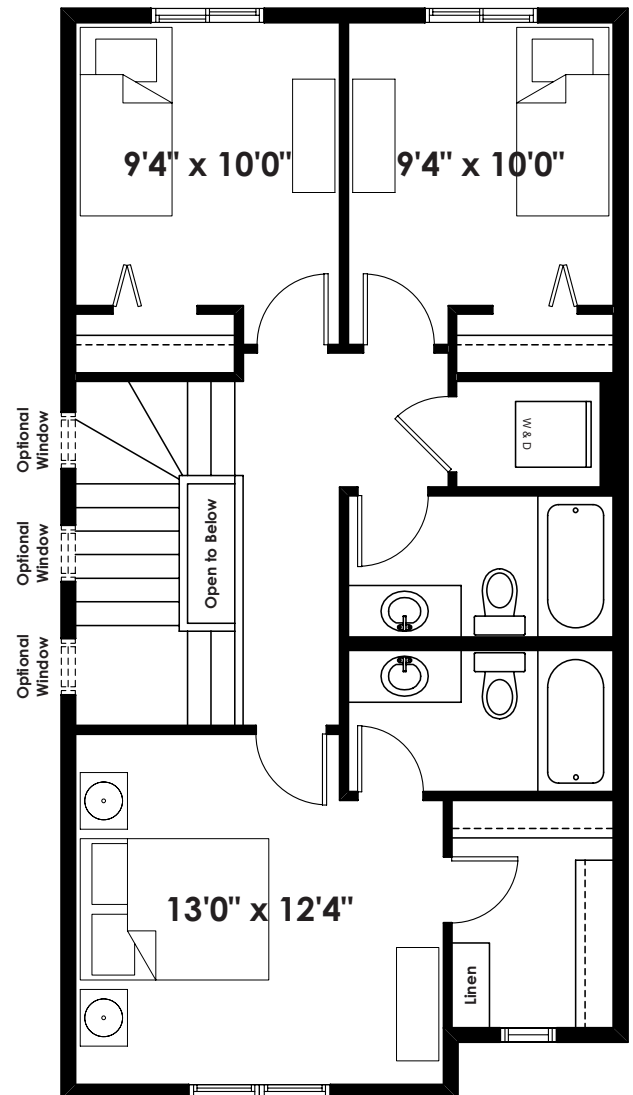
BETTER VALUE BY DESIGN
SINCE 1978 | HOMESBYAVI.COM

Homes by **AVI**

BASE FLOOR PLAN

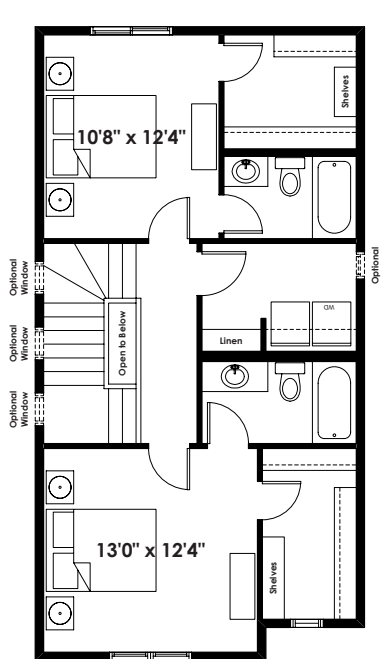


MAIN
718 SQ FT

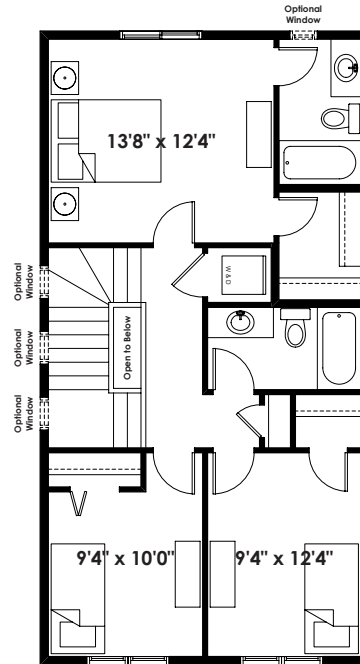


CLARKE
UPPER
750 SQ FT

FLOOR PLAN OPTIONS

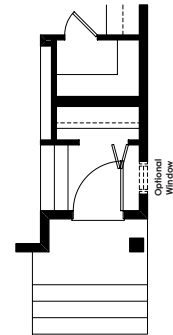
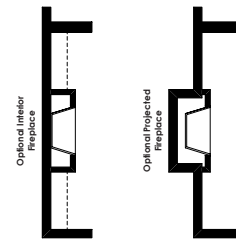


MUIR
Second Floor Plan
(Adds 0 Sq. Ft. to Second Floor)

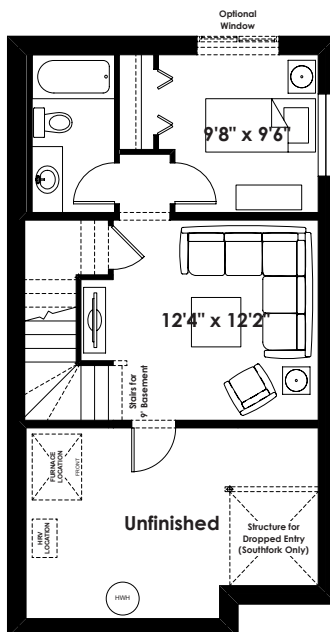


HENSON
Second Floor Plan
(Adds 12 Sq. Ft. to Second Floor)

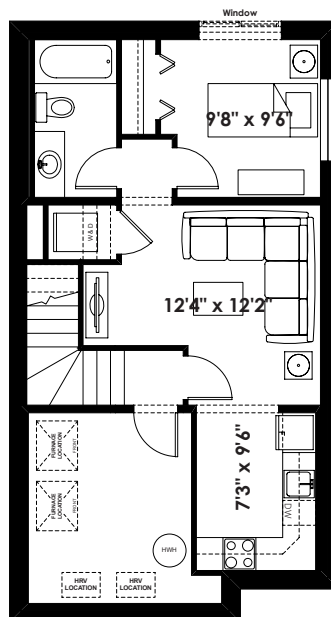
NOTE: THIS OPTIONAL SECOND FLOOR ONLY AVAILABLE WITH SELECT FLAT FRONT ELEVATIONS



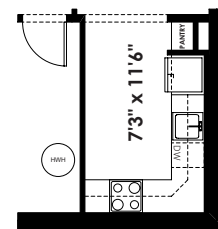
Dropped Entry
(Southfork Only)
(Adds 0 Sq. Ft. to Main Floor)



Alternate
Optional 1 Bedroom
Basement Room Layout
374 Sq. Ft. (Finished)



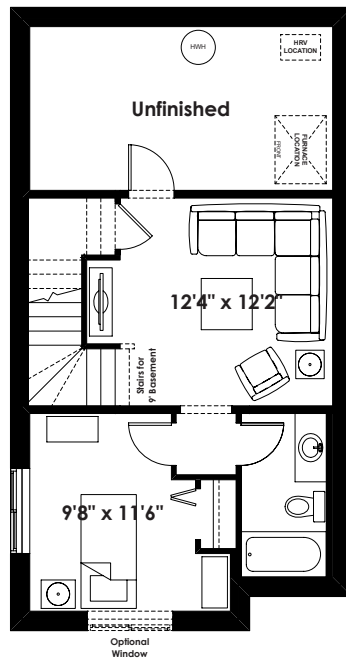
Optional 1 Bedroom
Basement Suite Layout
468 Sq. Ft. (Finished Area;
Must Add Optional Side Entry;
Must Add 9' Foundation Walls)



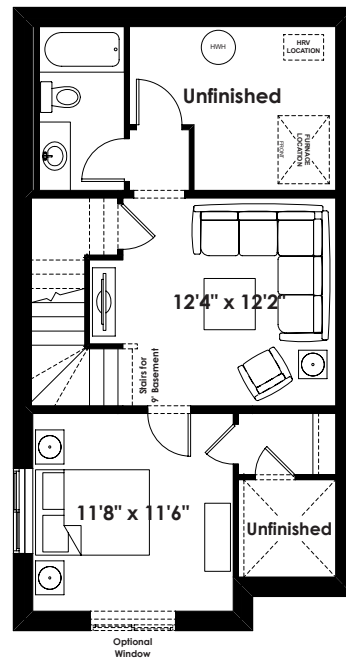
Partial Basement Suite Layout
for Flat Front Elevation
(Adds 12 Sq. Ft.)

ADDITIONAL
OPTIONS

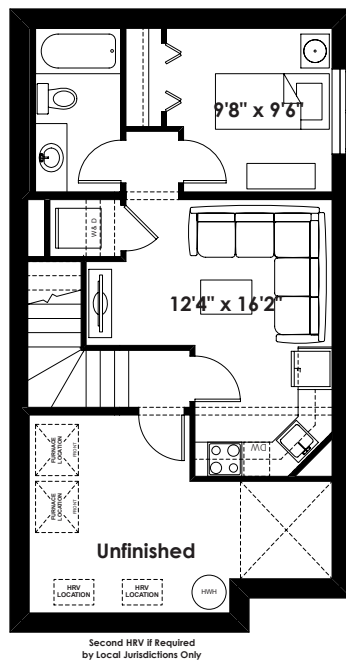
FLOOR PLAN OPTIONS



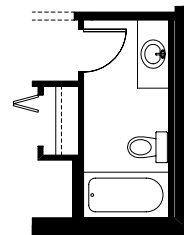
**Optional 1 Bedroom
Basement Room Layout
399 Sq. Ft. (Finished)**



**Optional 1 Bedroom
Basement Room Layout
With Dropped Entry (Southfork Only)
439 Sq. Ft. (Finished)**



**Optional 1 Bedroom
Basement Suite Layout
With Dropped Entry (Southfork Only)
419 Sq. Ft. (Finished Area;
Must Add Optional Side Entry;
Must Add 9' Foundation Walls)**



**Partial Basement Room Layout
for Flat Front Elevation
(Adds 12 Sq. Ft.)**

20'

THE ALEXIS

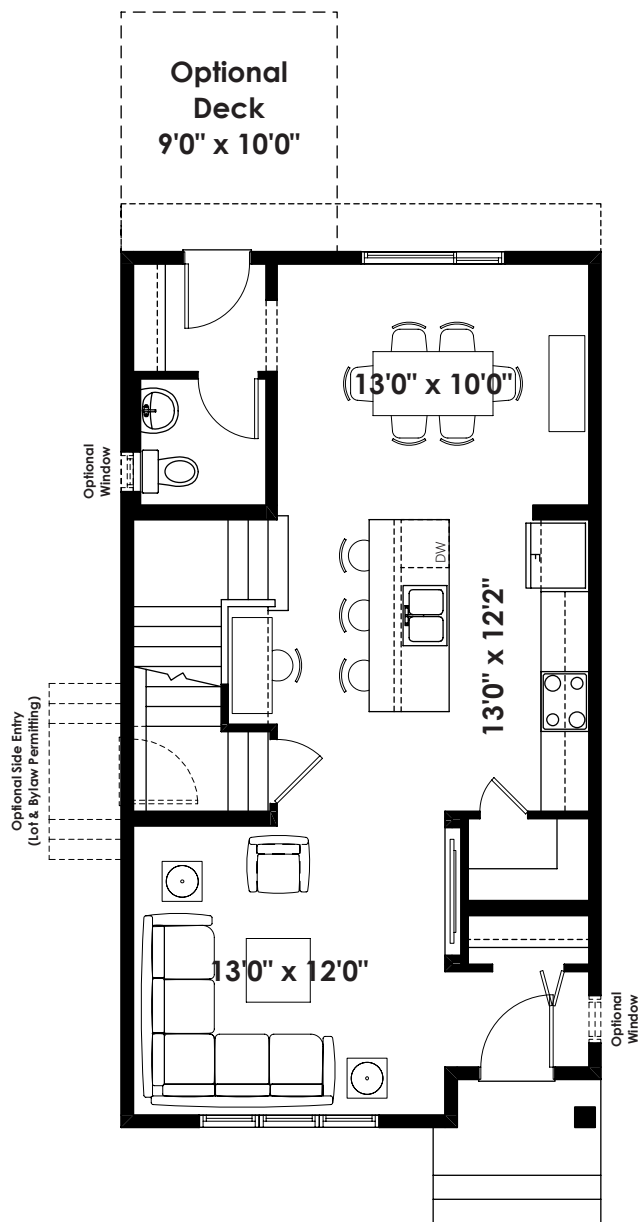
1,468+ SQ FT | 3 BED | 2.5 BATH



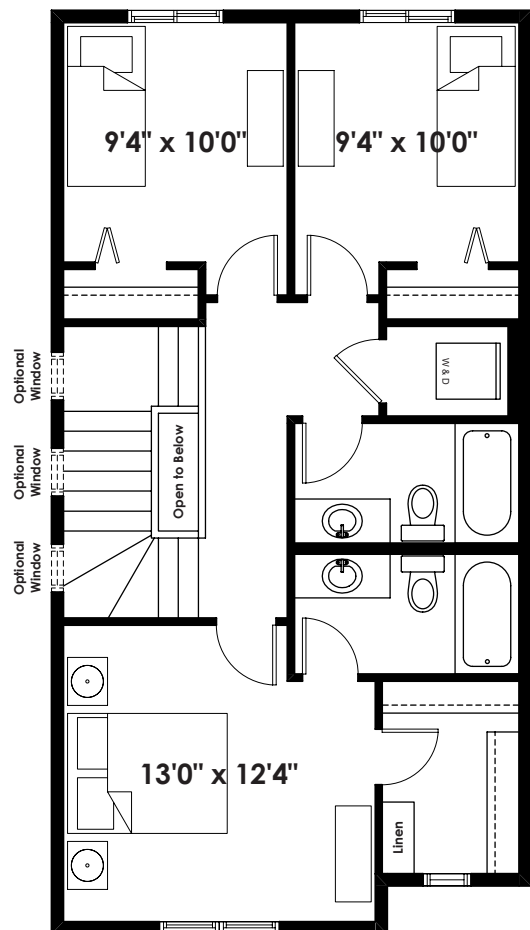
BETTER VALUE BY DESIGN
SINCE 1978 | HOMESBYAVI.COM

Homes by **AVI**

BASE FLOOR PLAN

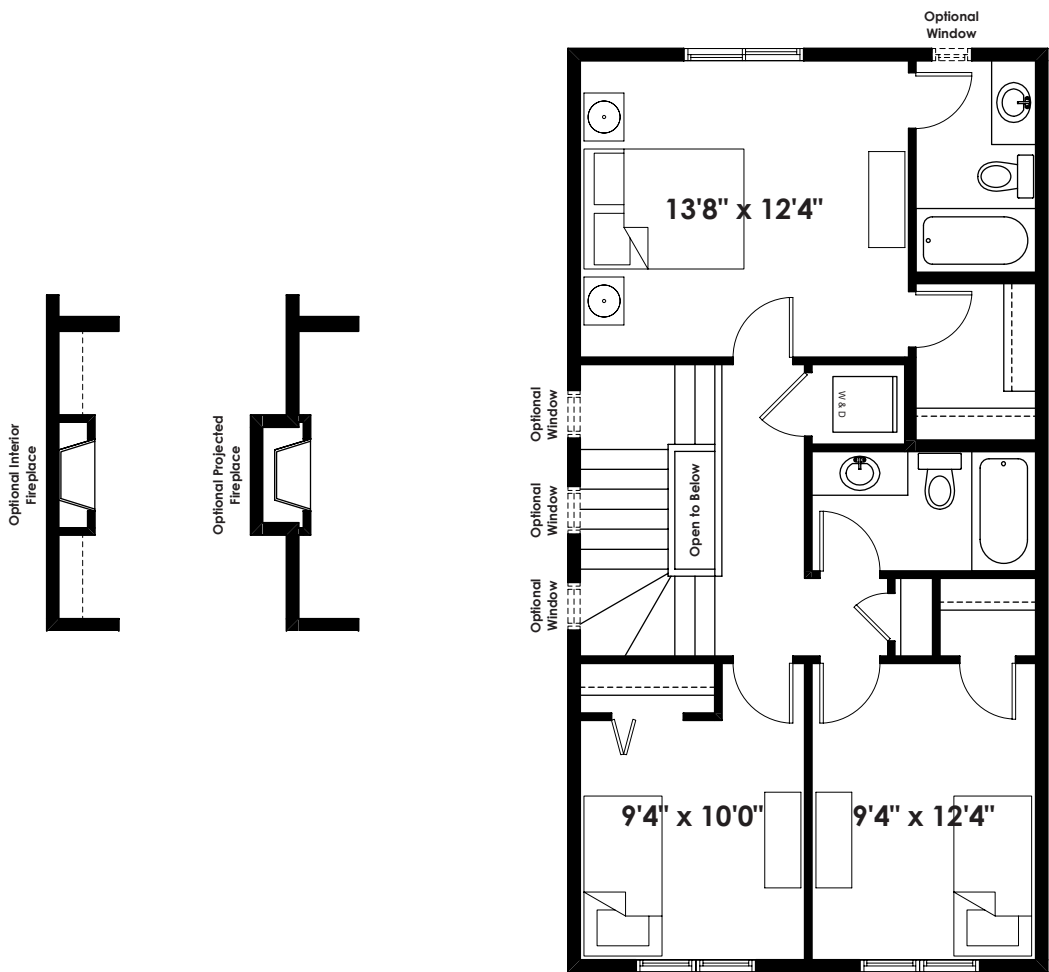


MAIN
718 SQ FT



SECOND
750 SQ FT

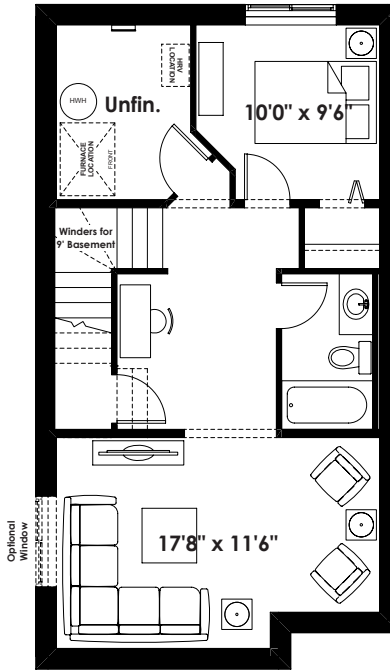
FLOOR PLAN OPTIONS



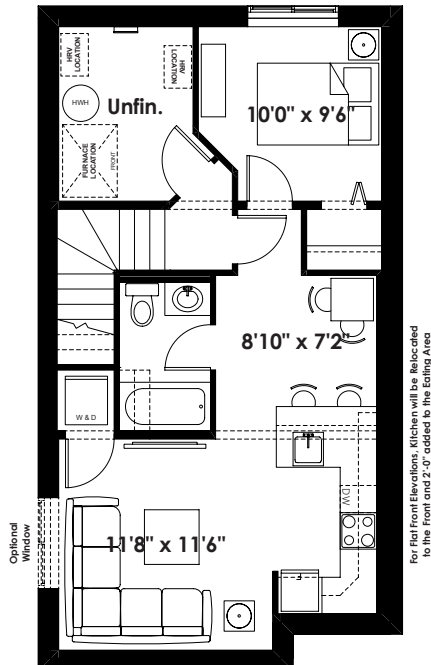
Second Floor Plan
(Adds 12 Sq. Ft. to Second Floor)

ADDITIONAL
OPTIONS

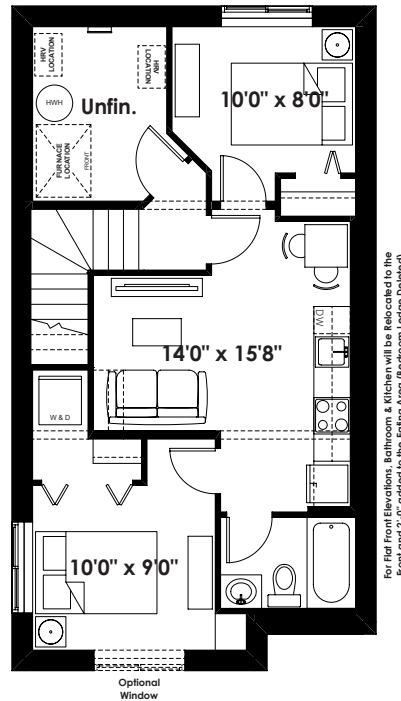
FLOOR PLAN OPTIONS



**Optional 1 Bedroom
Basement Room Layout
510 Sq. Ft. (Finished Area)**



**Optional 1 Bedroom
Basement Suite Layout
523 Sq. Ft. (Finished Area;
Must Add Optional Side Entry;
Must Add 9' Foundation Walls)**



**Optional 2 Bedroom
Basement Suite Layout
523 Sq. Ft. (Finished Area;
Must Add Optional Side Entry;
Must Add 9' Foundation Walls)**

Prices are subject to change without notice. Actual floor plan, elevation, and square footage may not be exactly as shown. Square footage is measured to Alberta Building Code (ABC) regulations. Builder reserves the right to make changes without notice. E&OE.

Homes by **AVI**

18'

THE FINLEY

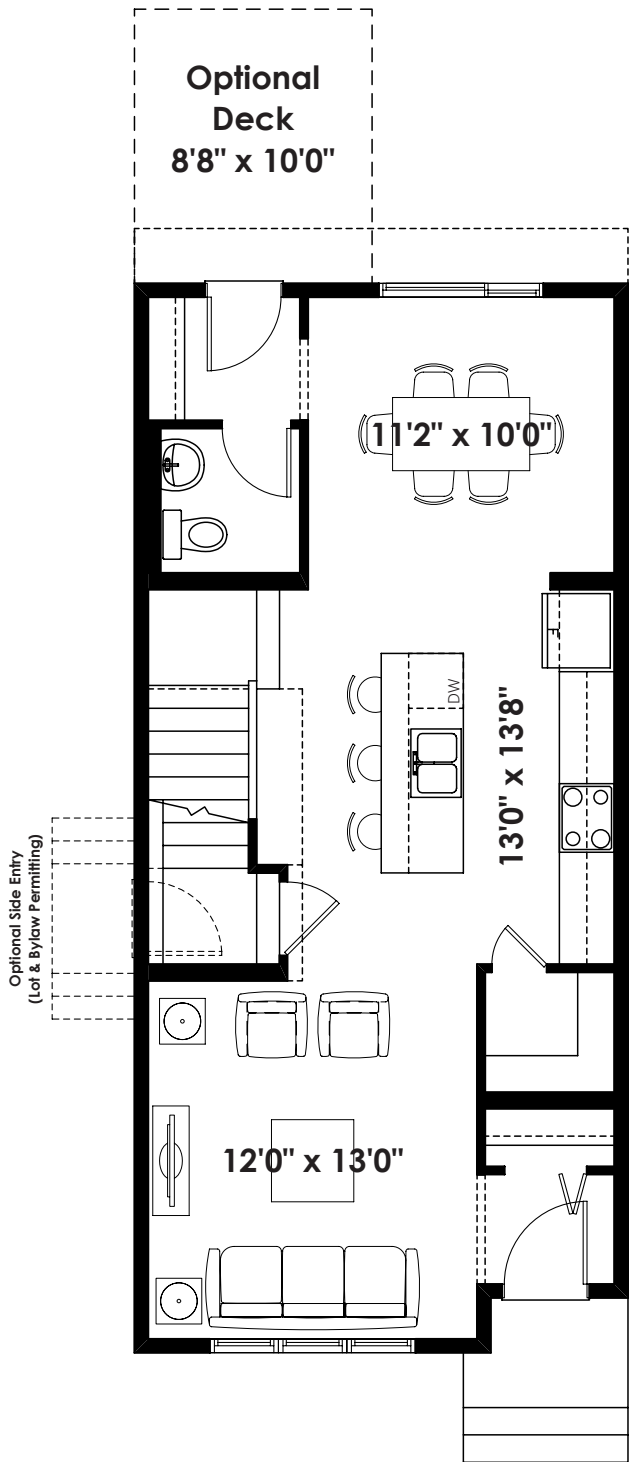
1,409+ SQ FT | 3 BED | 2.5 BATH



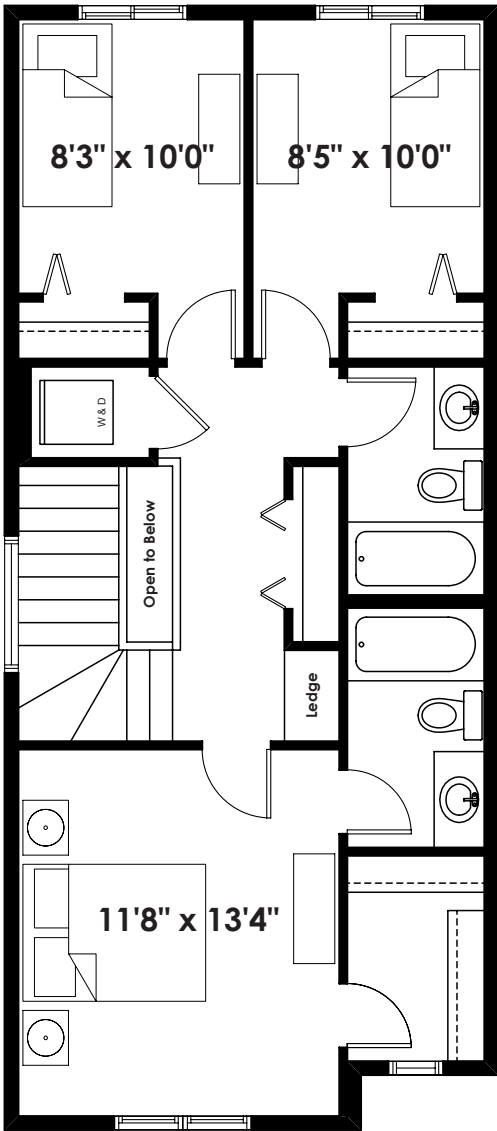
BETTER VALUE BY DESIGN
SINCE 1978 | HOMESBYAVI.COM

Homes by **AVI**

BASE FLOOR PLAN

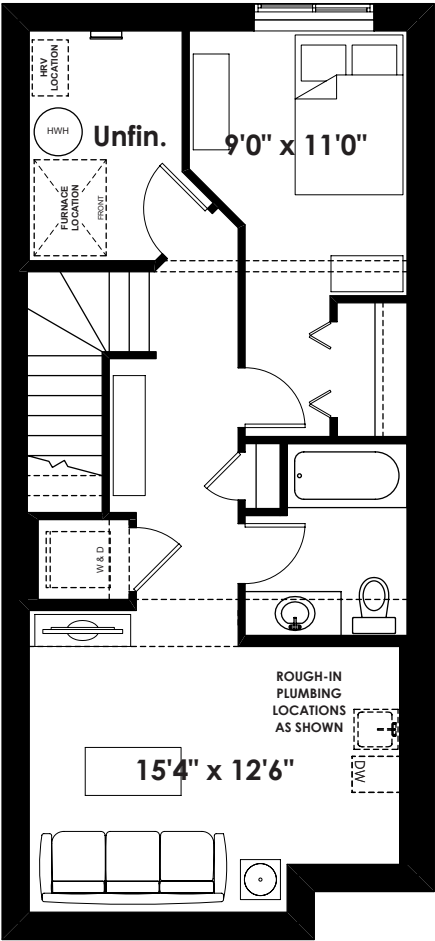


MAIN
692 SQ FT

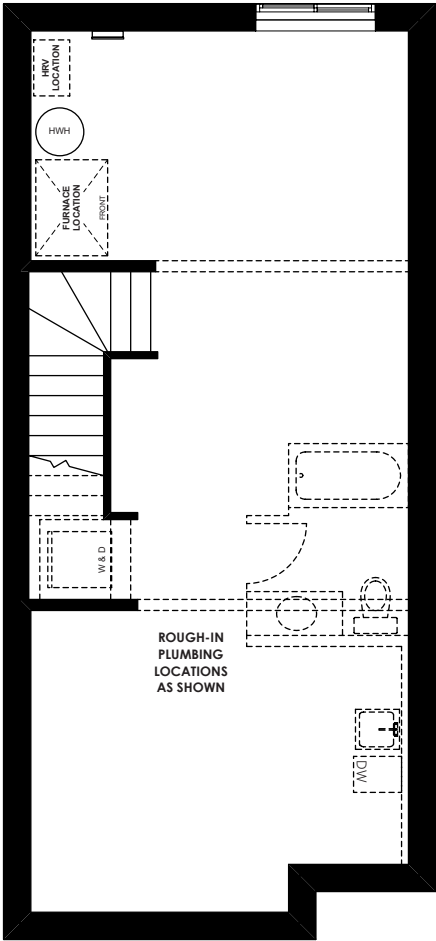


UPPER
717 SQ FT

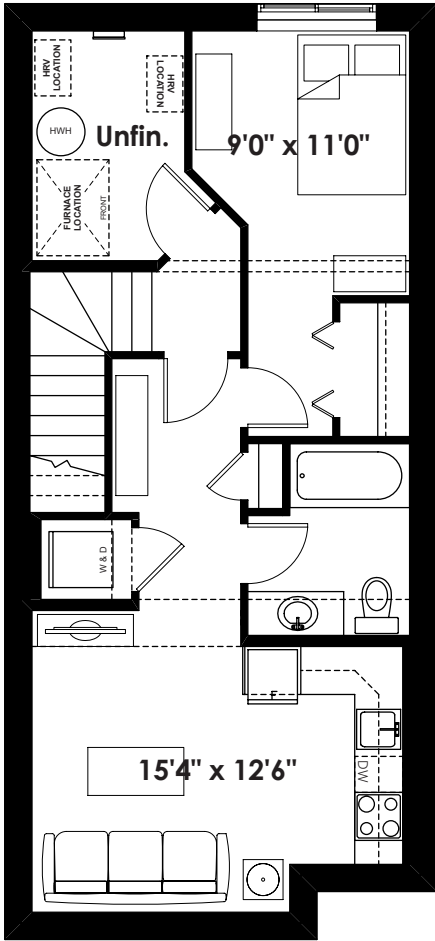
FLOOR PLAN OPTIONS



Optional 1 Bedroom
Basement Room Layout
488 Sq. Ft. (Finished)



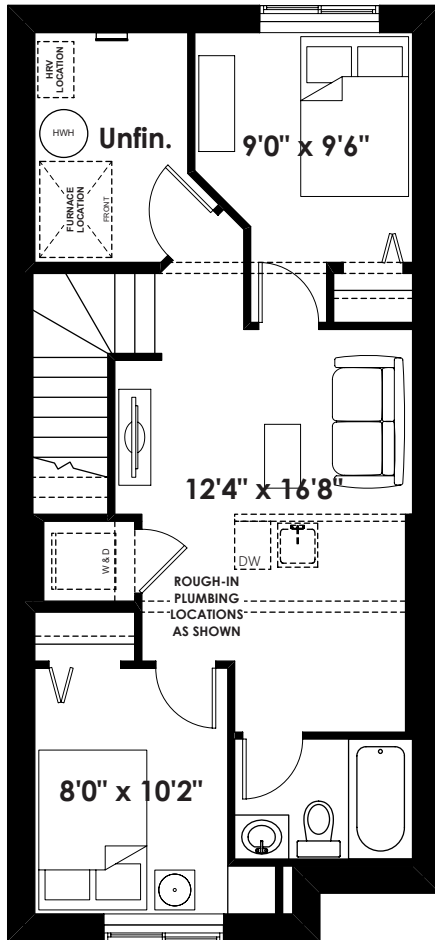
Unfinished Basement
for 1 Bedroom Layout
(9' Foundation Walls)



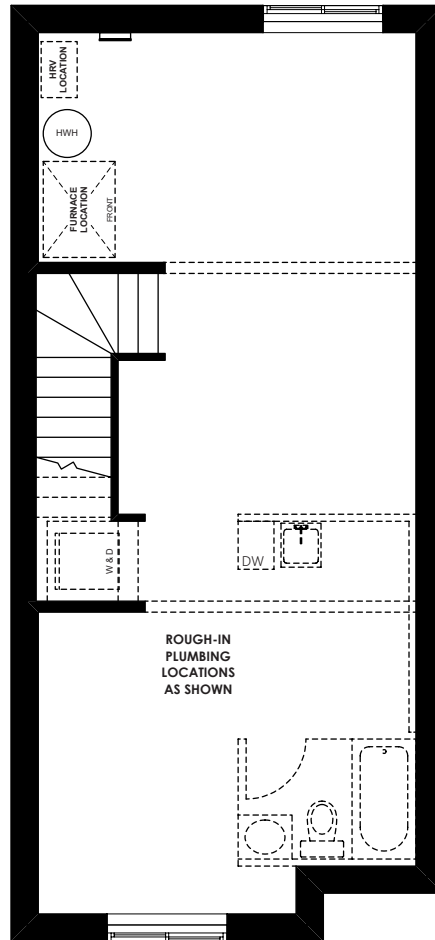
Optional 1 Bedroom
Basement Suite Layout
504 Sq. Ft. (Finished)

ADDITIONAL
OPTIONS

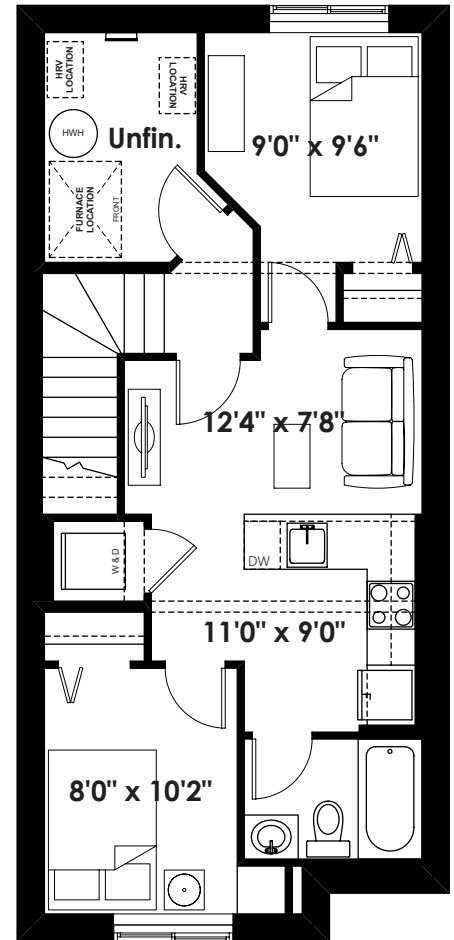
FLOOR PLAN OPTIONS



**Optional 2 Bedroom
Basement Room Layout
488 Sq. Ft. (Finished)**



**Unfinished Basement
for 2 Bedroom Layout
(9' Foundation Walls)**



**Optional 2 Bedroom
Basement Suite Layout
504 Sq. Ft. (Finished)**

18'

THE SASHA

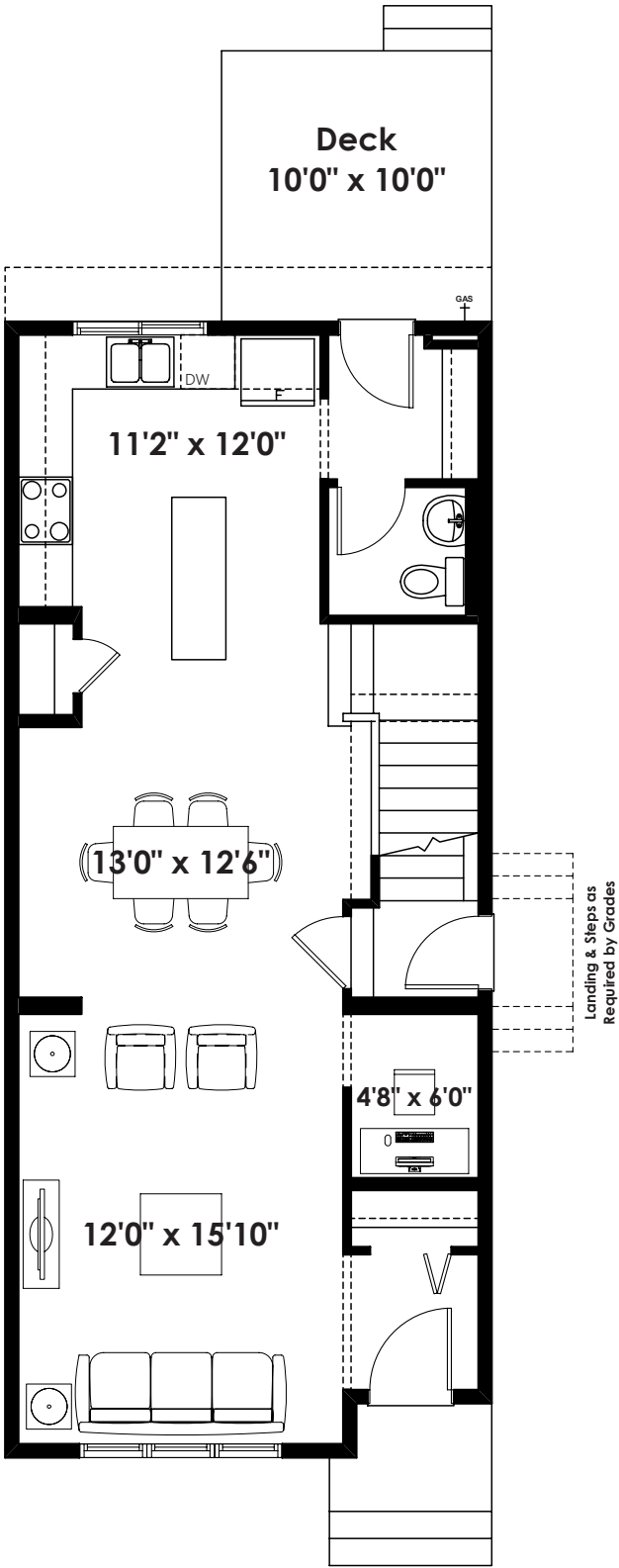
1,523+ SQ FT | 3 BED | 2.5 BATH



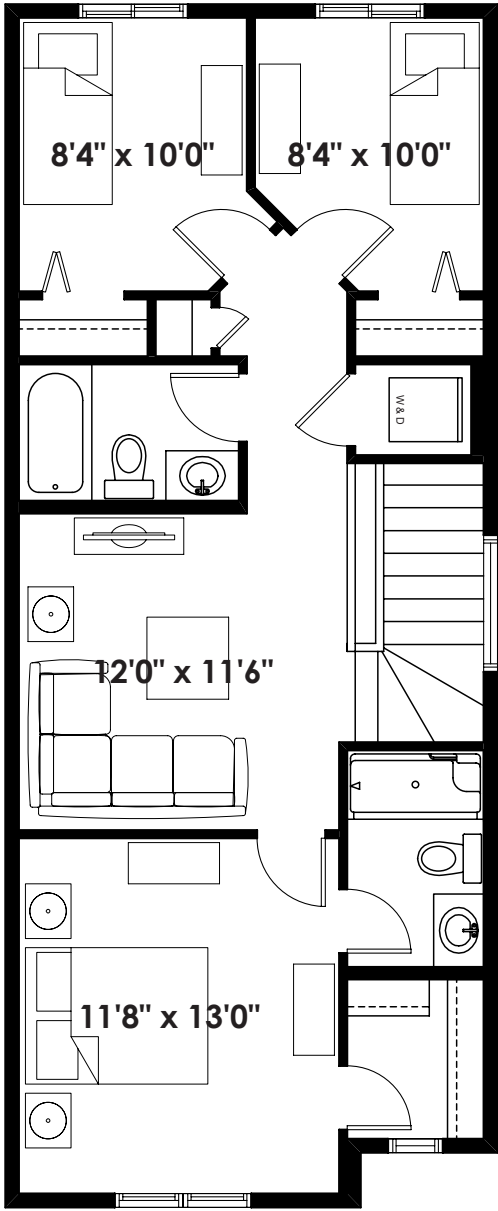
BETTER VALUE BY DESIGN
SINCE 1978 | HOMESBYAVI.COM

Homes by **AVI**

BASE FLOOR PLAN

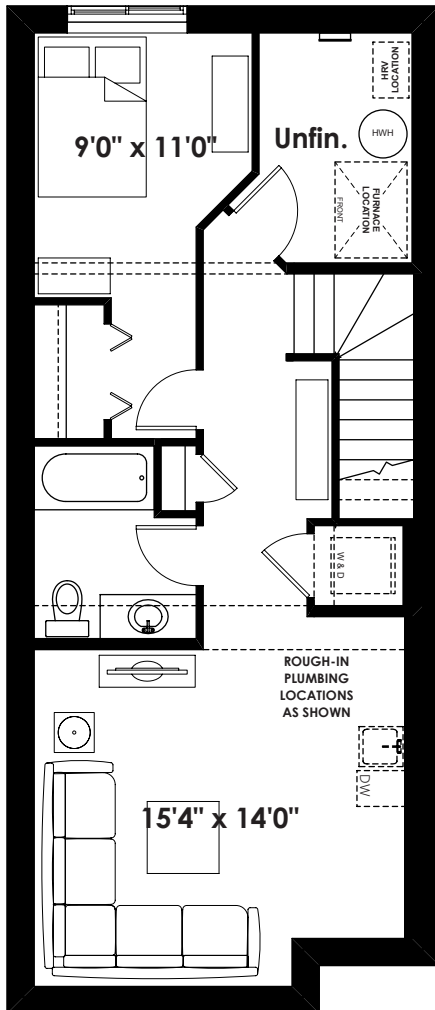


MAIN
746 SQ FT

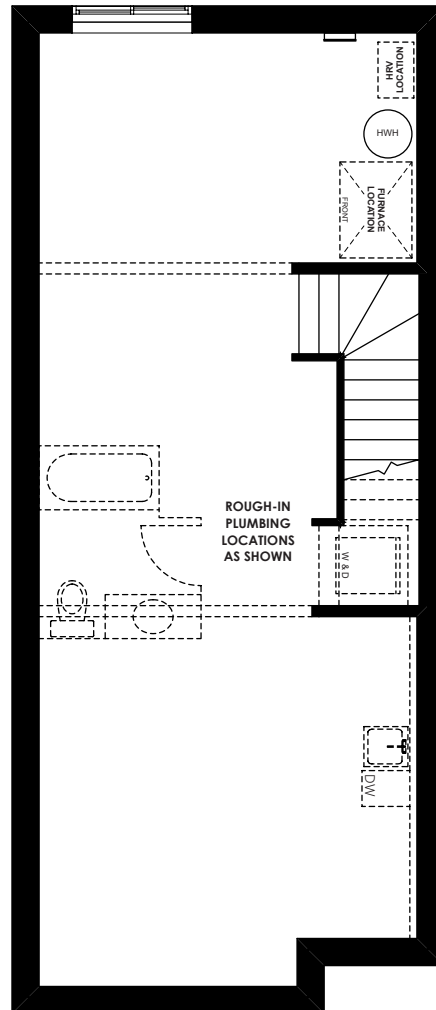


UPPER
777 SQ FT

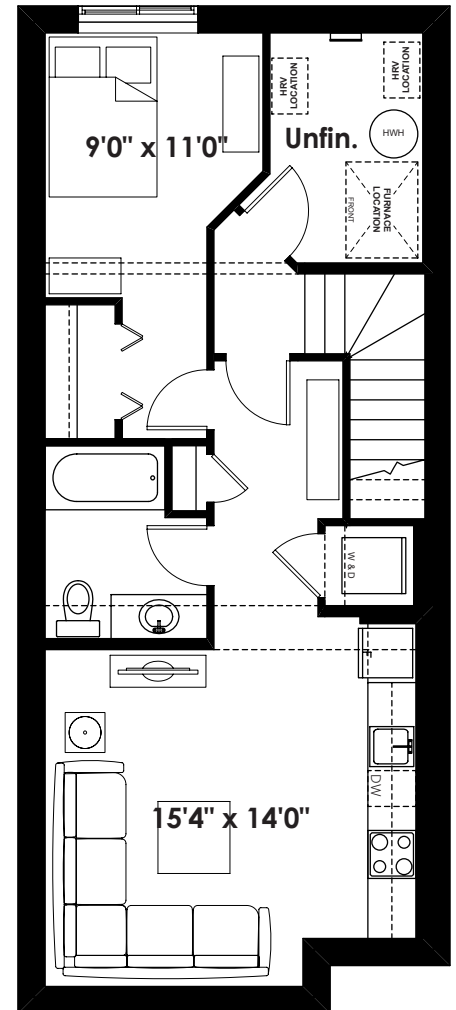
FLOOR PLAN OPTIONS



**Optional 1 Bedroom
Basement Room Layout
538 Sq. Ft. (Finished)**



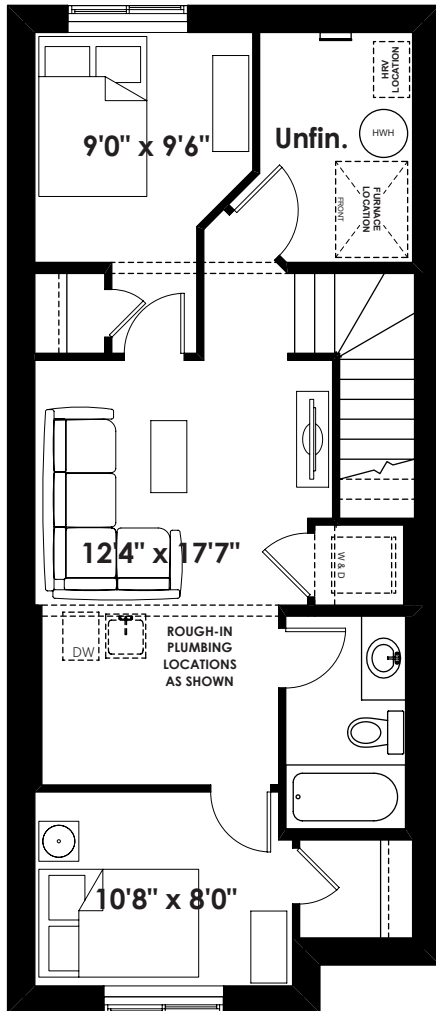
**Unfinished Basement
for 1 Bedroom Layout
(9' Foundation Walls)**



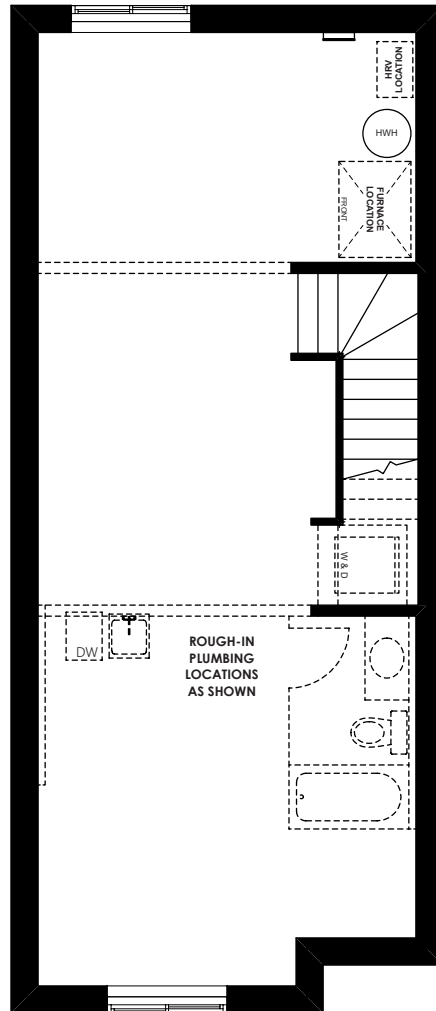
**Optional 1 Bedroom
Basement Suite Layout
554 Sq. Ft. (Finished)**

ADDITIONAL
OPTIONS

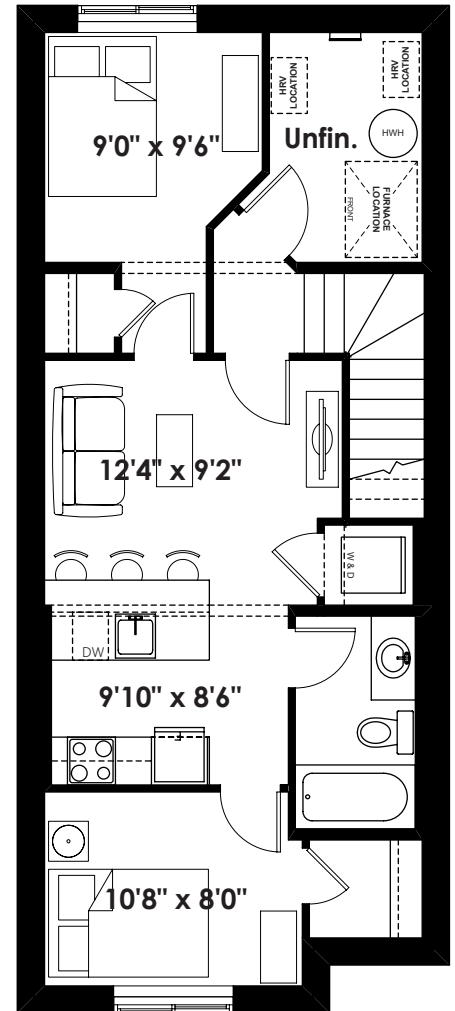
FLOOR PLAN OPTIONS



**Optional 2 Bedroom
Basement Room Layout
538 Sq. Ft. (Finished)**



**Unfinished Basement
for 2 Bedroom Layout
(9' Foundation Walls)**



**Optional 2 Bedroom
Basement Suite Layout
554 Sq. Ft. (Finished)**

20'

THE GREGORY

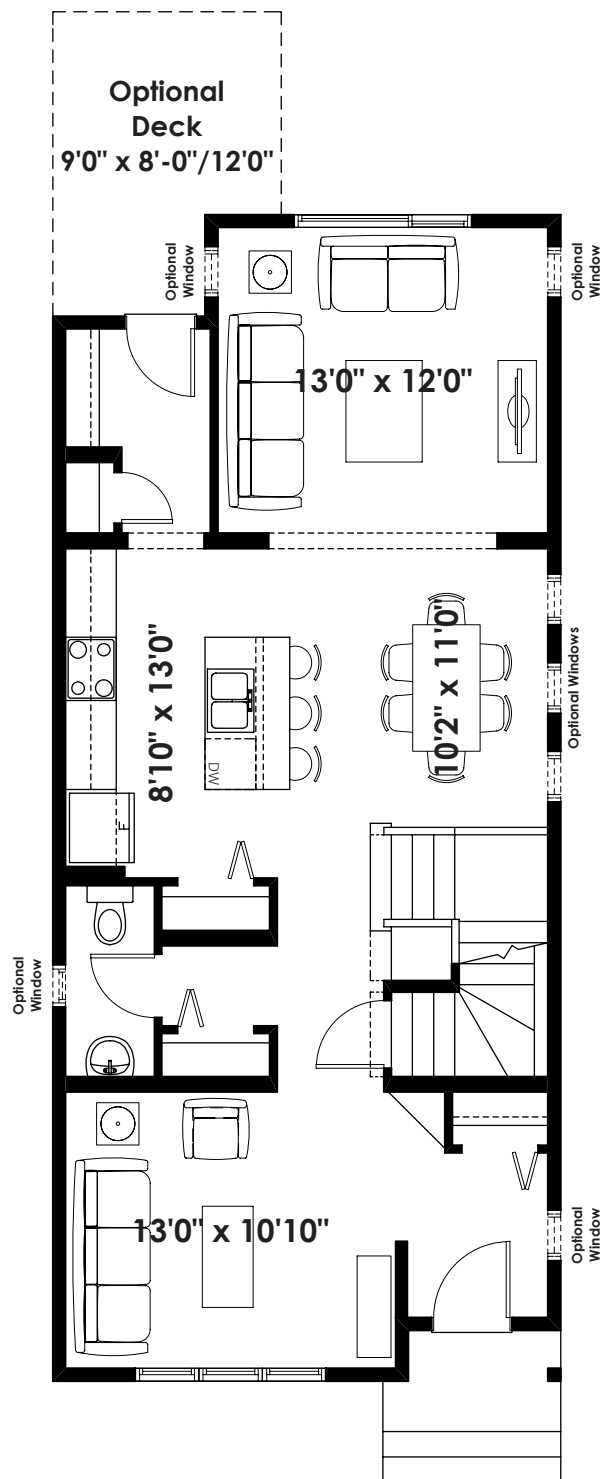
1,705+ SQ FT | 3 BED | 2.5 BATH



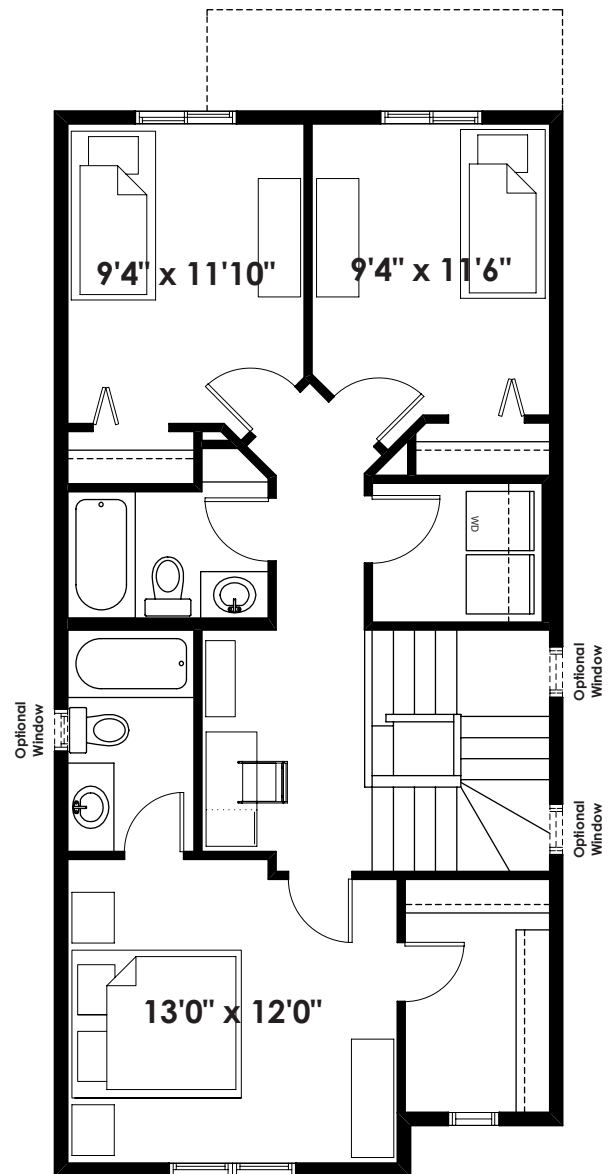
BETTER VALUE BY DESIGN
SINCE 1978 | HOMESBYAVI.COM

Homes by **AVI**

BASE FLOOR PLAN

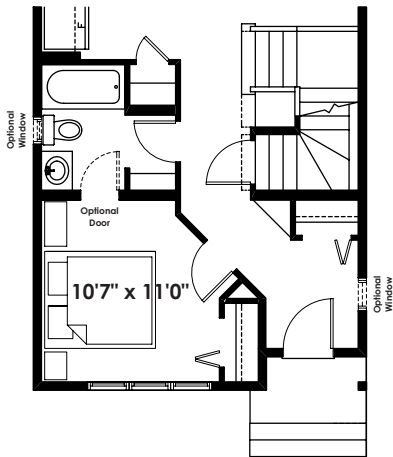


MAIN
884 SQ FT

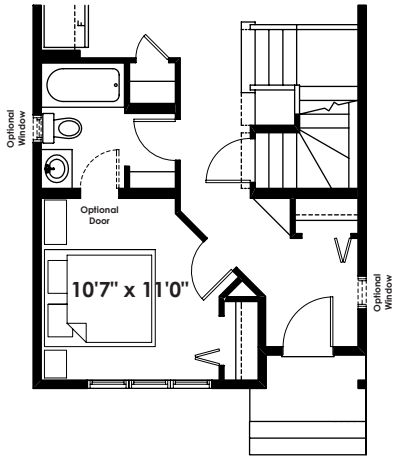


UPPER
821 SQ FT

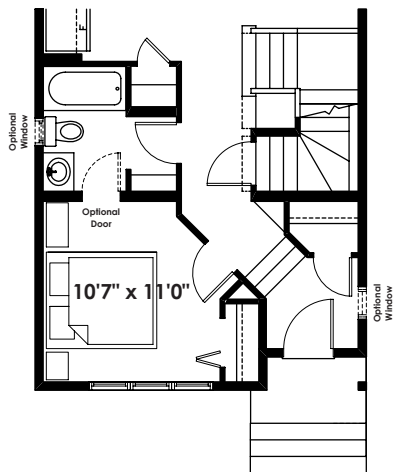
FLOOR PLAN OPTIONS



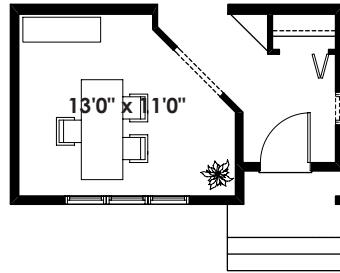
**Optional Bedroom &
3 Piece Bathroom**
(Adds 0 Sq. Ft. to Main Floor)



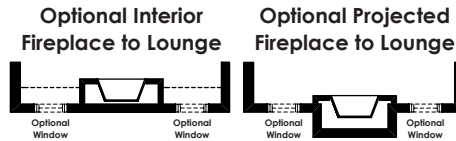
**Optional Bedroom &
3 Piece Bathroom**
(Adds 0 Sq. Ft. to Main Floor)



**Optional Bedroom &
3 Piece Bathroom
for Southfork Dropped Foyer**
Adds 0 S . Ft. to Main Floor

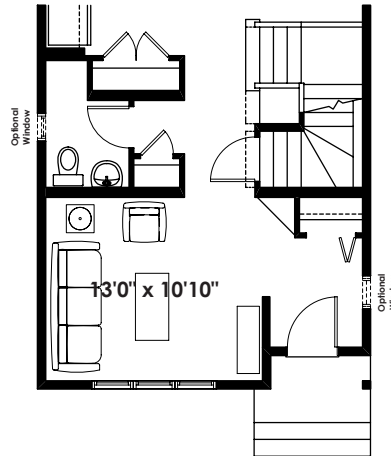


Optional Arch to Study
(Adds 0 Sq. Ft. to Main Floor)

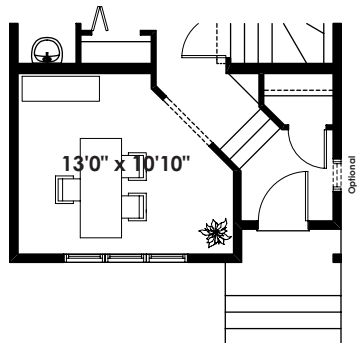


**Optional Interior
Fireplace to Lounge**

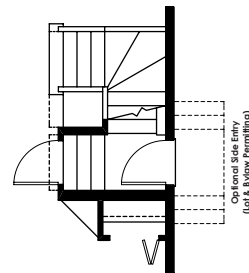
**Optional Projected
Fireplace to Lounge**



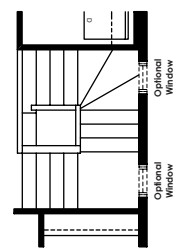
Optional Half Bath & Pantry
(Adds 0 Sq. Ft. to Main Floor)



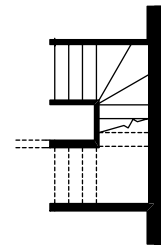
**Optional Arch to Study
for Dropped Foyer
(Southfork Only)**
(Adds 0 Sq. Ft. to Main Floor)



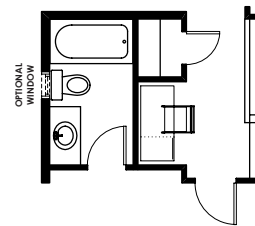
**Partial Main Floor Plan
for Optional Side Entry
(Stair Winders Reversed)**



**Partial Second Floor Plan
for Optional Side Entry
(Stair Winders Reversed)**

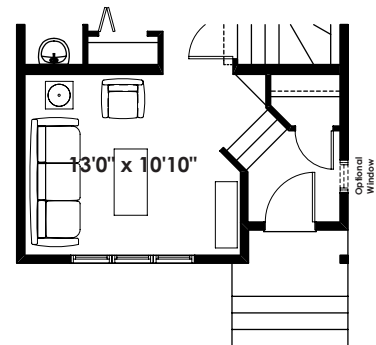


**Partial Foundation Plan
for Optional Side Entry
(Stair Winders Reversed)**



Optional Linen Closet
(Adds 0 Sq. Ft. to Second Floor)

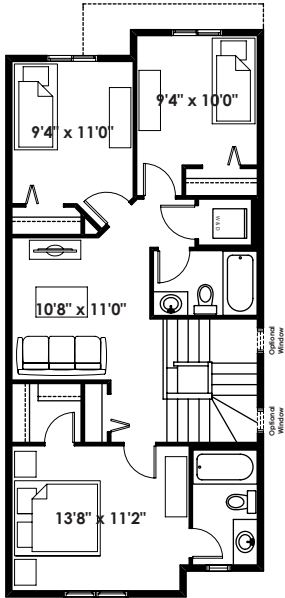
ONLY AVAILABLE WITH STANTON SECOND FLOOR PLAN



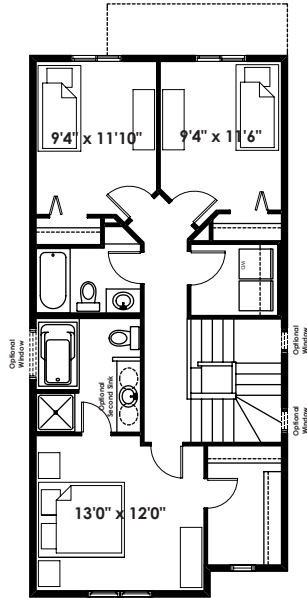
**Dropped Entry
(Southfork Only)**
(Adds 0 Sq. Ft. to Main Floor)

**ADDITIONAL
OPTIONS**

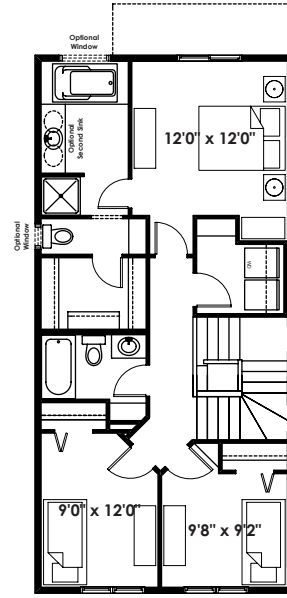
FLOOR PLAN OPTIONS



HARDY
Second Floor Plan
(Adds 21 Sq. Ft. to Second Floor)

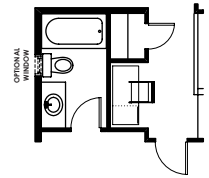


MURDOCH
Second Floor Plan
(Adds 0 Sq. Ft. to Second Floor)

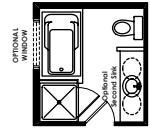


OLSEN
Second Floor Plan
(Adds 12 Sq. Ft. to Second Floor)

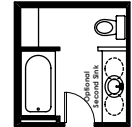
NOTE: THIS OPTIONAL SECOND FLOOR ONLY AVAILABLE WITH SELECT FLAT FRONT ELEVATIONS



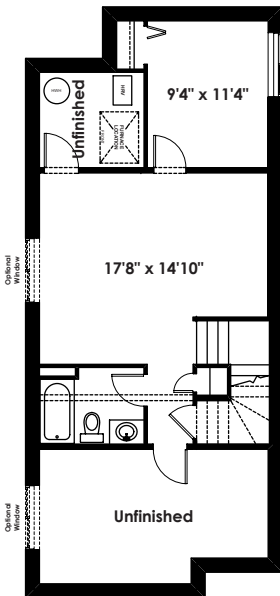
Optional Linen Closet
(Adds 0 Sq. Ft. to Second Floor)
ONLY AVAILABLE WITH STANTON SECOND FLOOR PLAN



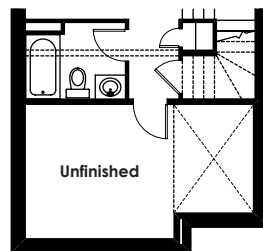
Upgraded Ensuite with Glass Wall Shower
(Adds 0 Sq. Ft. to Second Floor)
ONLY AVAILABLE WITH MURDOCH SECOND FLOOR



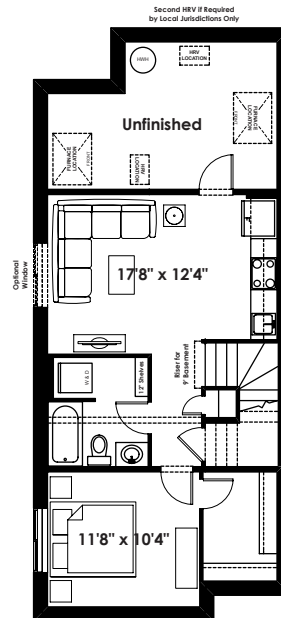
Alternate Ensuite with One Piece Tub / Shower & Linen Shelves
(Adds 0 Sq. Ft. to Second Floor)
ONLY AVAILABLE WITH MURDOCH SECOND FLOOR PLAN



GREGORY
Optional Basement Room Layout
489 Sq. Ft. (Finished)

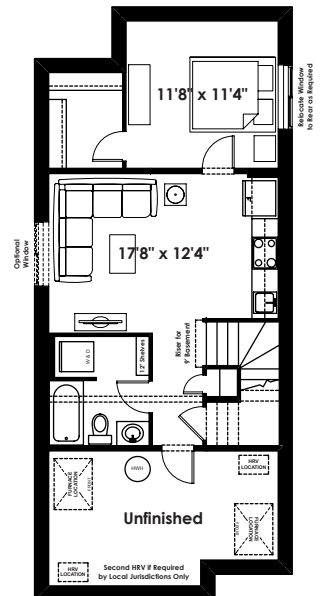


Optional Basement Room Layout (Southfork Only)
489 Sq. Ft. (Finished)



GREGORY
Optional Basement Suite Layout
551 Sq. Ft. (Finished Area; Must Add Optional Side Entry)

BASEMENT SUITE MAY NOT CONFORM TO ALL MUNICIPALITIES. LAND USE BY-LAW & CODE MUST BE REVIEWED PRIOR TO ACCEPTANCE



GREGORY
Alternate Basement Suite Layout
554 Sq. Ft. (Finished Area; Must Add Optional Side Entry)

BASEMENT SUITE MAY NOT CONFORM TO ALL MUNICIPALITIES. LAND USE BY-LAW & CODE MUST BE REVIEWED PRIOR TO ACCEPTANCE

Prices are subject to change without notice. Actual floor plan, elevation, and square footage may not be exactly as shown. Square footage is measured to Alberta Building Code (ABC) regulations. Builder reserves the right to make changes without notice. E&OE.

Homes by **AVI**