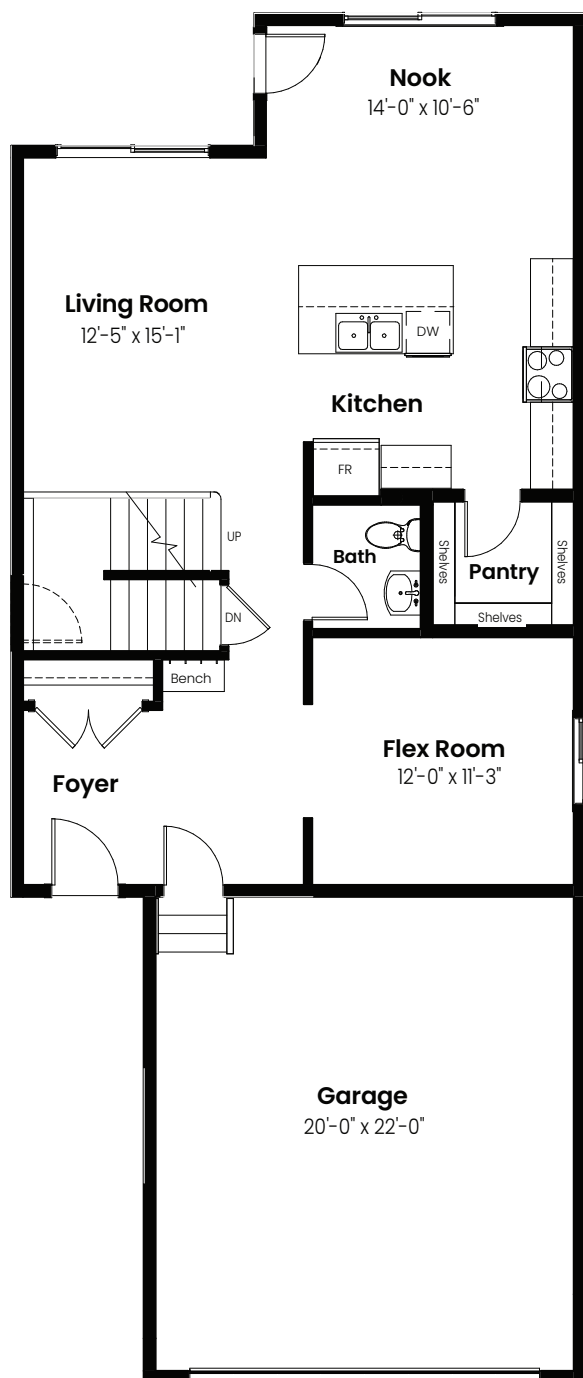


3 Bedrooms | 2.5 Bathrooms

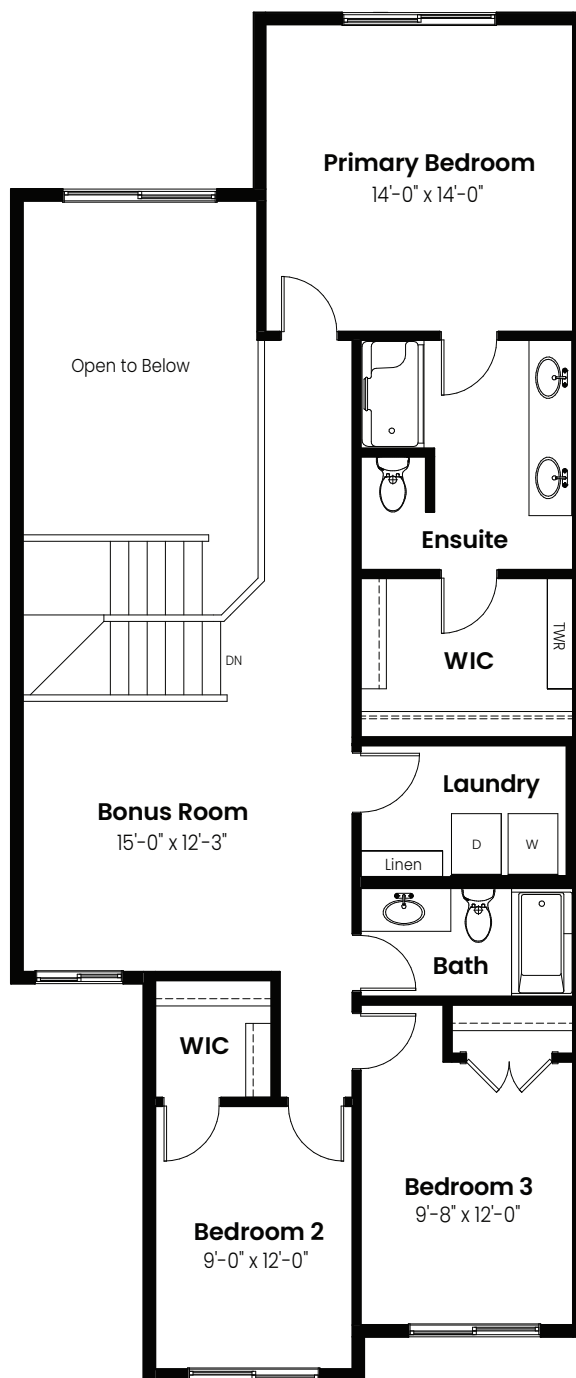
# Fuji

2,204 sqft

26' Wide



Main Floor: 974 Sq Ft



Second Floor: 1230 Sq Ft

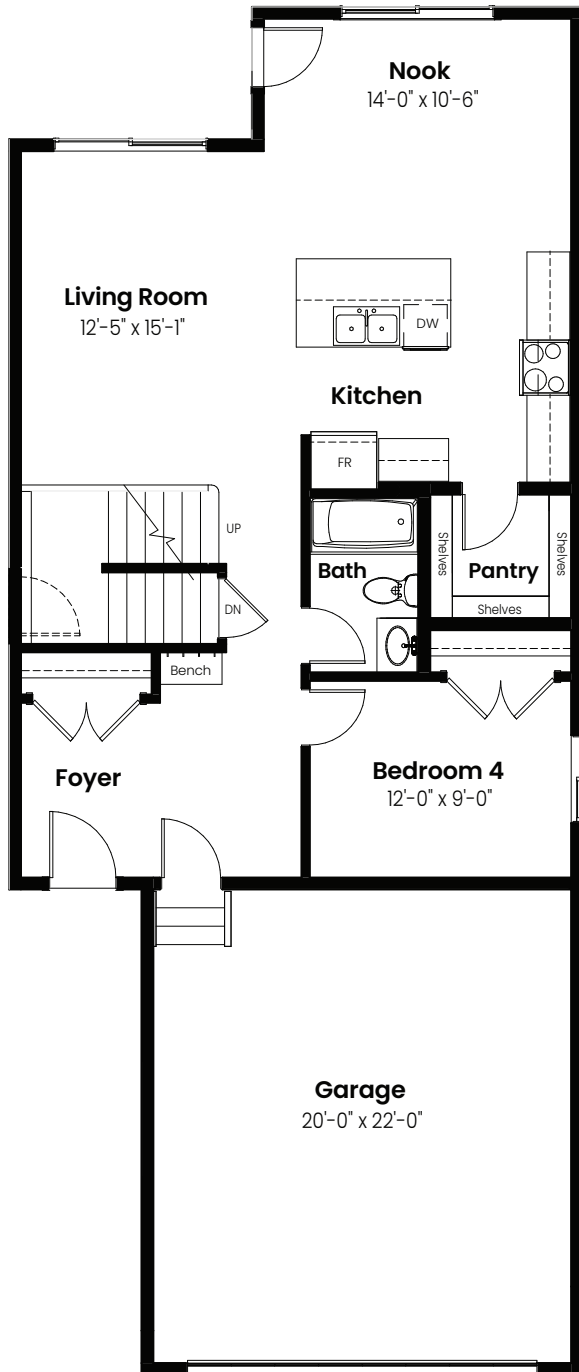


© 2025 Landmark Group of Companies Inc. All rights reserved. Any use or reproduction in whole or in part of these promotional materials without the prior written authorization of Landmark Group of Companies Inc. is strictly prohibited. Floor plans, specifications, pricing and dimensions shown are approximate and subject to change without notice. Artist rendering shown. Interior room dimensions are taken from inside of walls. Garage dimensions are taken from outside of walls. Revised on 01/17/2025.

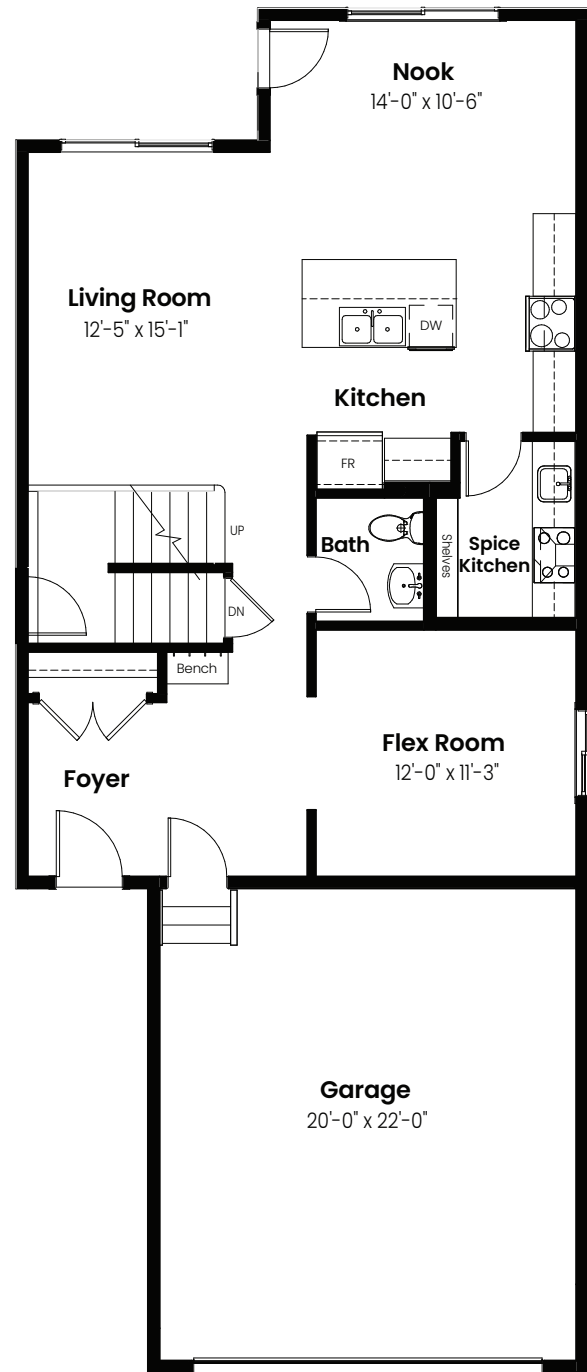
3 Beds | 2.5 Baths | 2,204 Sq. Ft. | 26' Wide

# Fuji

## Options



Main Floor Bedroom &  
Full Bath Option: 974 Sq Ft



Spice Kitchen Option: 974 Sq Ft

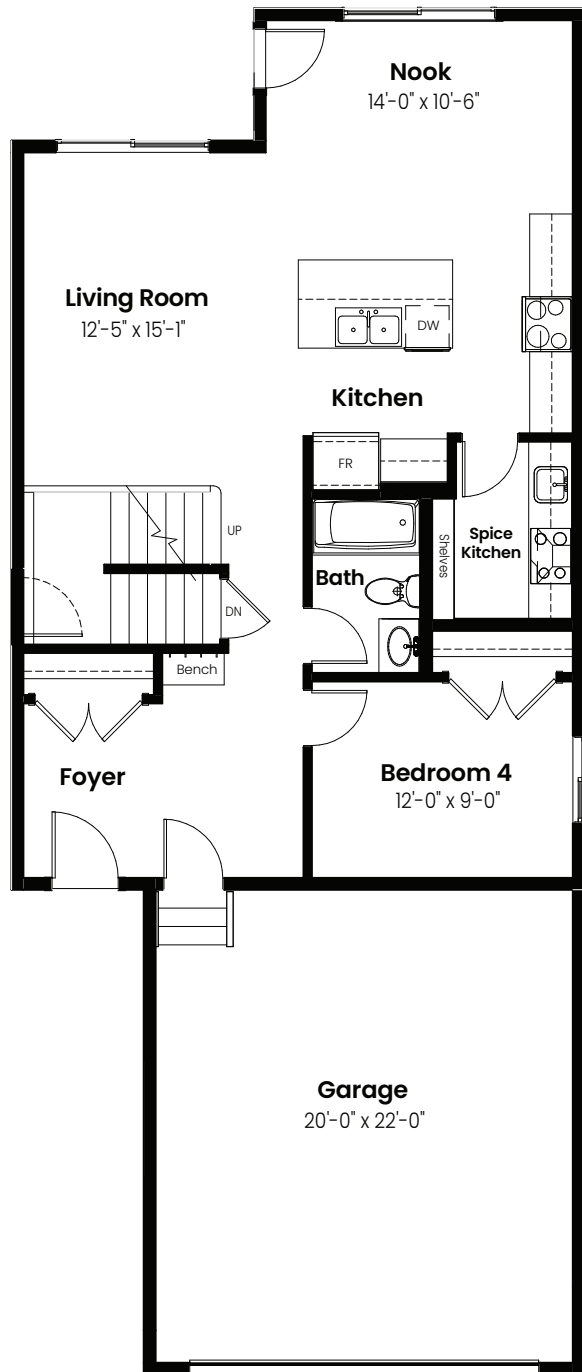


© 2025 Landmark Group of Companies Inc. All rights reserved. Any use or reproduction in whole or in part of these promotional materials without the prior written authorization of Landmark Group of Companies Inc. is strictly prohibited. Floor plans, specifications, pricing and dimensions shown are approximate and subject to change without notice. Artist rendering shown. Interior room dimensions are taken from inside of walls. Garage dimensions are taken from outside of walls. Revised on 01/17/2025.

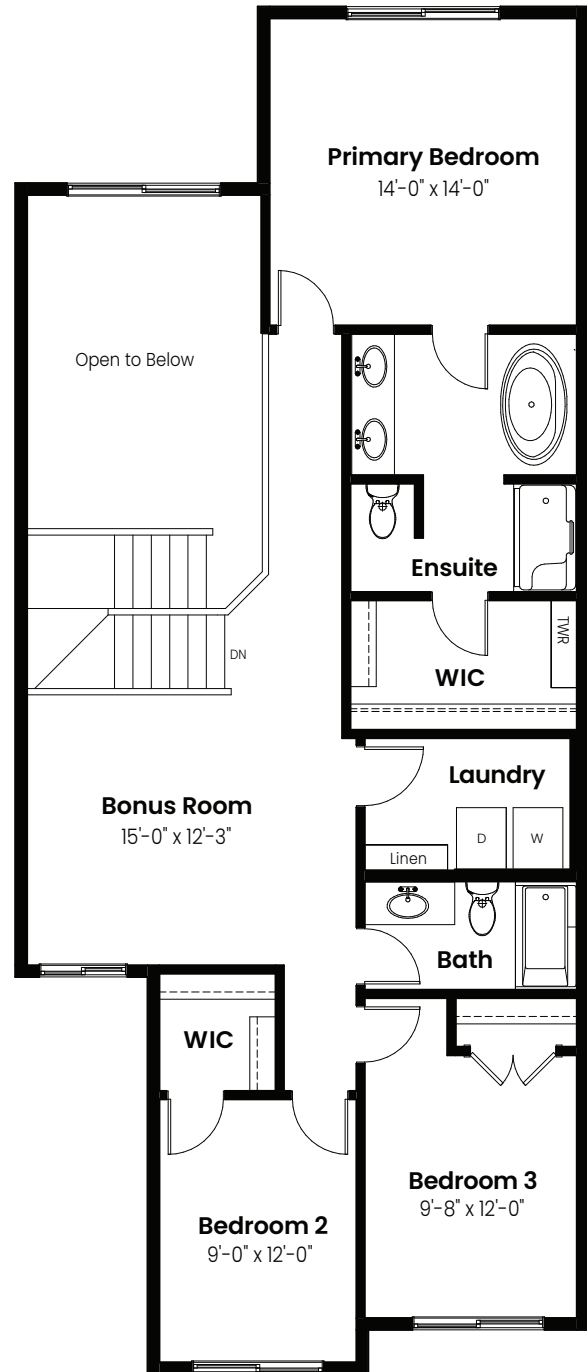
3 Beds | 2.5 Baths | 2,204 Sq. Ft. | 26' Wide

# Fuji

## Options



Full Bath, Main Floor Bedroom  
& Spice Kitchen Option: 974 Sq Ft



4 Piece Ensuite Option: 1230 Sq Ft

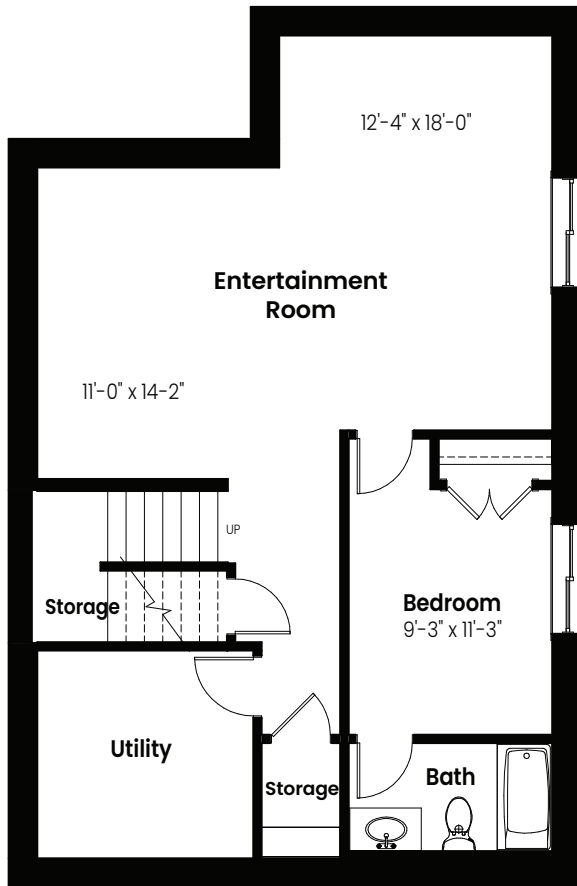


© 2025 Landmark Group of Companies Inc. All rights reserved. Any use or reproduction in whole or in part of these promotional materials without the prior written authorization of Landmark Group of Companies Inc. is strictly prohibited. Floor plans, specifications, pricing and dimensions shown are approximate and subject to change without notice. Artist rendering shown. Interior room dimensions are taken from inside of walls. Garage dimensions are taken from outside of walls. Revised on 01/17/2025.

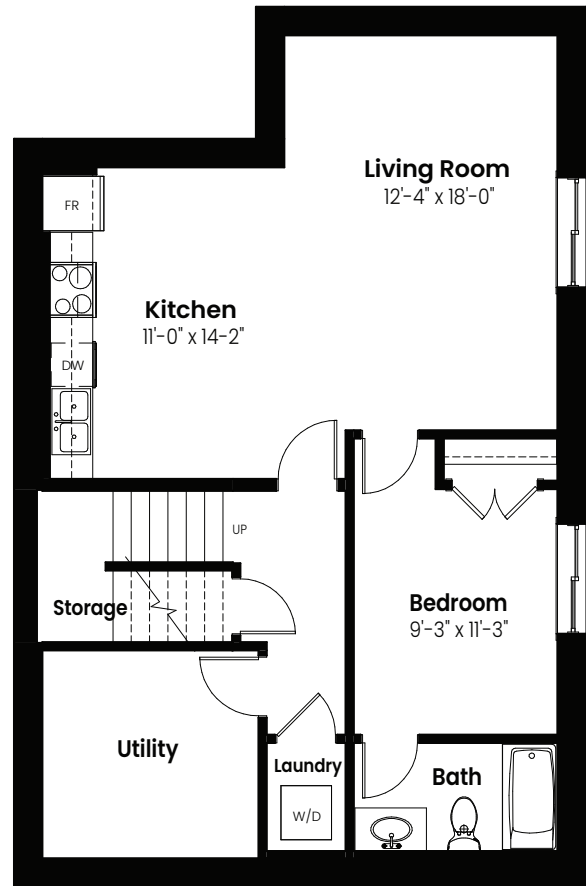
3 Beds | 2.5 Baths | 2,204 Sq. Ft. | 26' Wide

# Fuji

## Basement Options



Basement Development  
Option: 716 Sq Ft



Basement Suite Option: 716 Sq Ft



© 2025 Landmark Group of Companies Inc. All rights reserved. Any use or reproduction in whole or in part of these promotional materials without the prior written authorization of Landmark Group of Companies Inc. is strictly prohibited. Floor plans, specifications, pricing and dimensions shown are approximate and subject to change without notice. Artist rendering shown. Interior room dimensions are taken from inside of walls. Garage dimensions are taken from outside of walls. Revised on 01/17/2025.



3 Beds | 2.5 Baths | 2,204 Sq. Ft. | 26' Wide

# Fuji

## Elevation



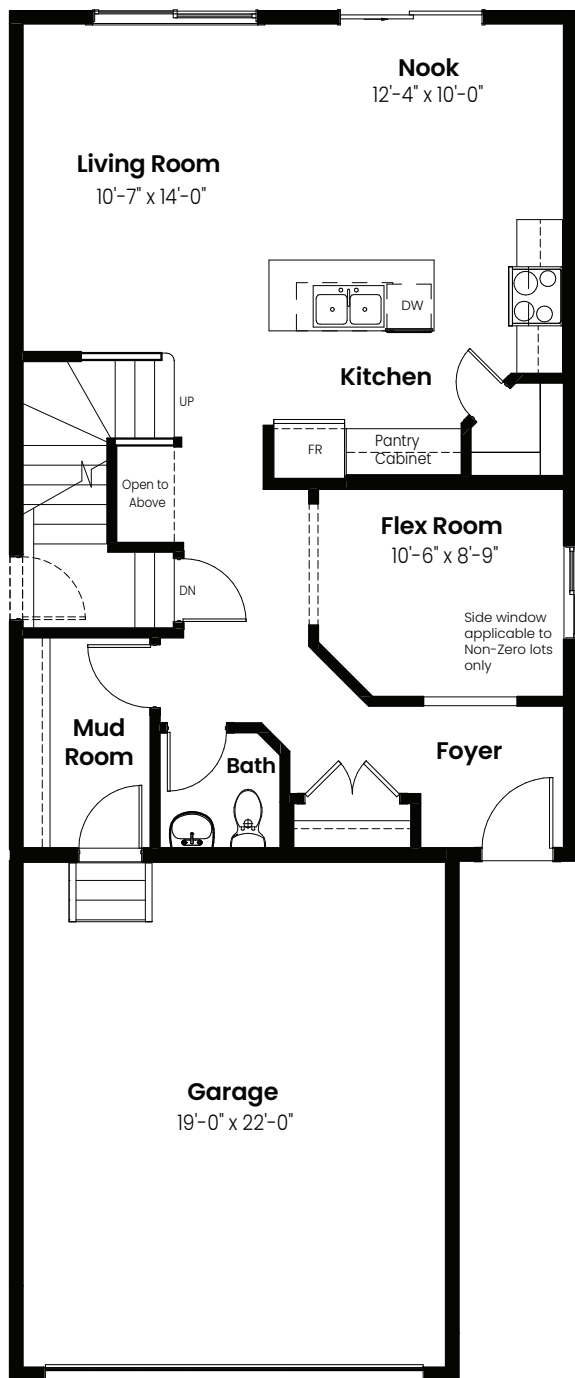
© 2025 Landmark Group of Companies Inc. All rights reserved. Any use or reproduction in whole or in part of these promotional materials without the prior written authorization of Landmark Group of Companies Inc. is strictly prohibited. Floor plans, specifications, pricing and dimensions shown are approximate and subject to change without notice. Artist rendering shown. Interior room dimensions are taken from inside of walls. Garage dimensions are taken from outside of walls. Revised on 01/17/2025.

3 Bedrooms | 2.5 Bathrooms

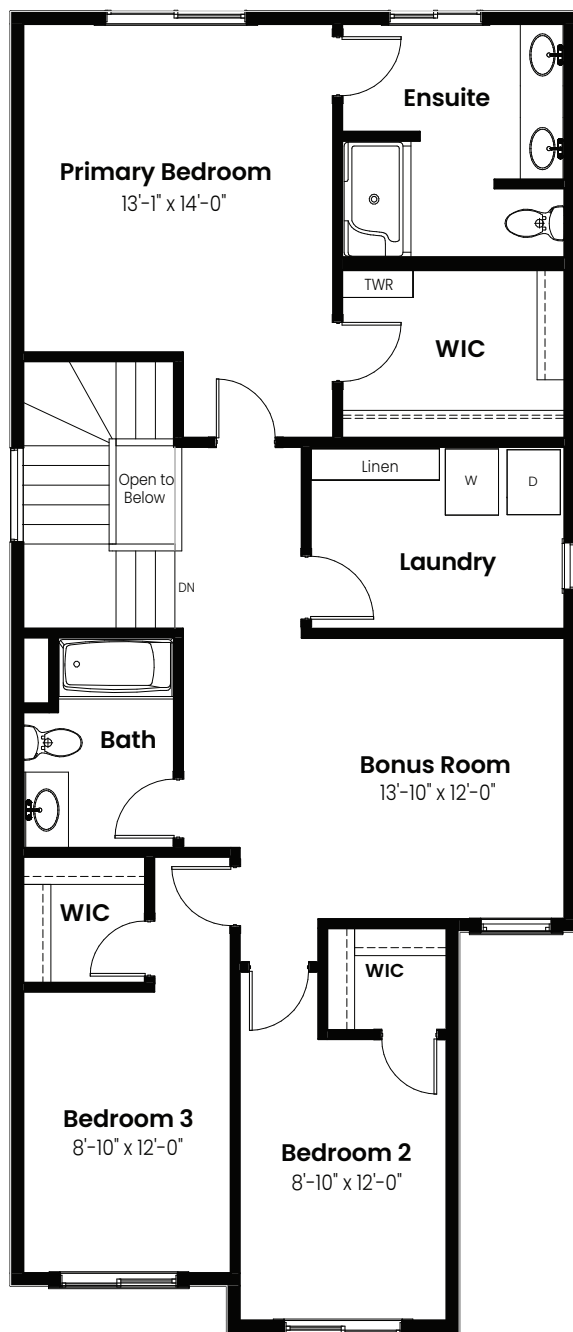
Pisa

2,094 sqft

24' Wide



Main Floor: 864 Sq Ft



Second Floor: 1230 Sq Ft

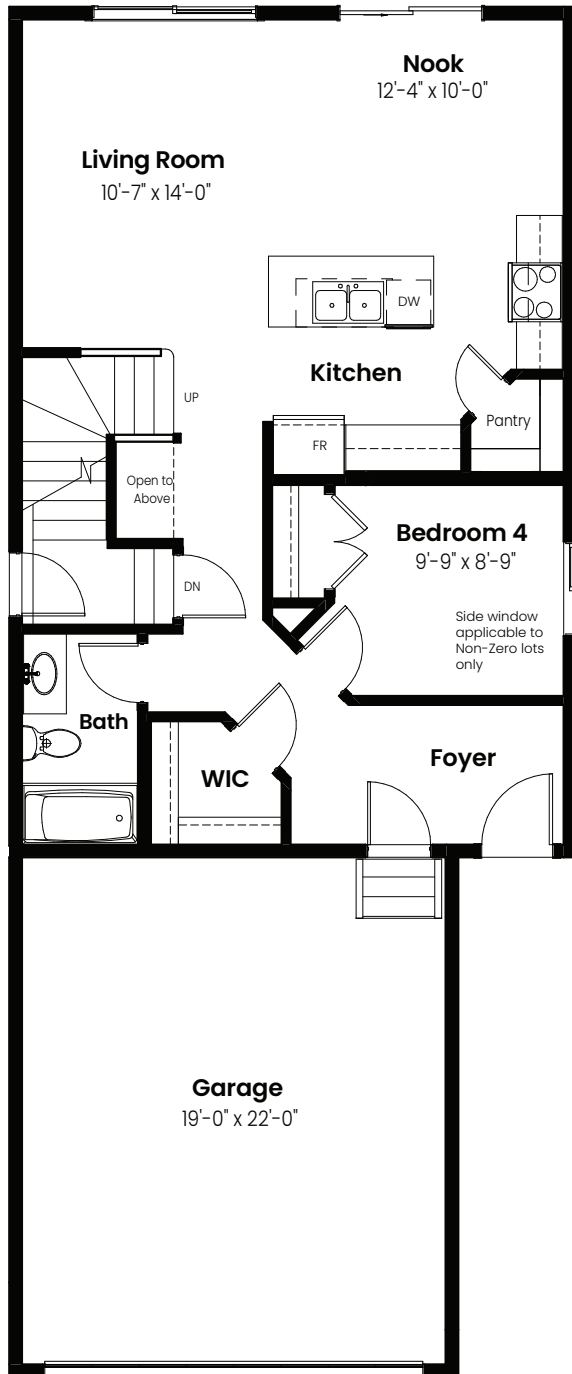


© 2025 Landmark Group of Companies Inc. All rights reserved. Any use or reproduction in whole or in part of these promotional materials without the prior written authorization of Landmark Group of Companies Inc. is strictly prohibited. Floor plans, specifications, pricing and dimensions shown are approximate and subject to change without notice. Artist rendering shown. Interior room dimensions are taken from inside of walls. Garage dimensions are taken from outside of walls. Revised on 01/13/2025.

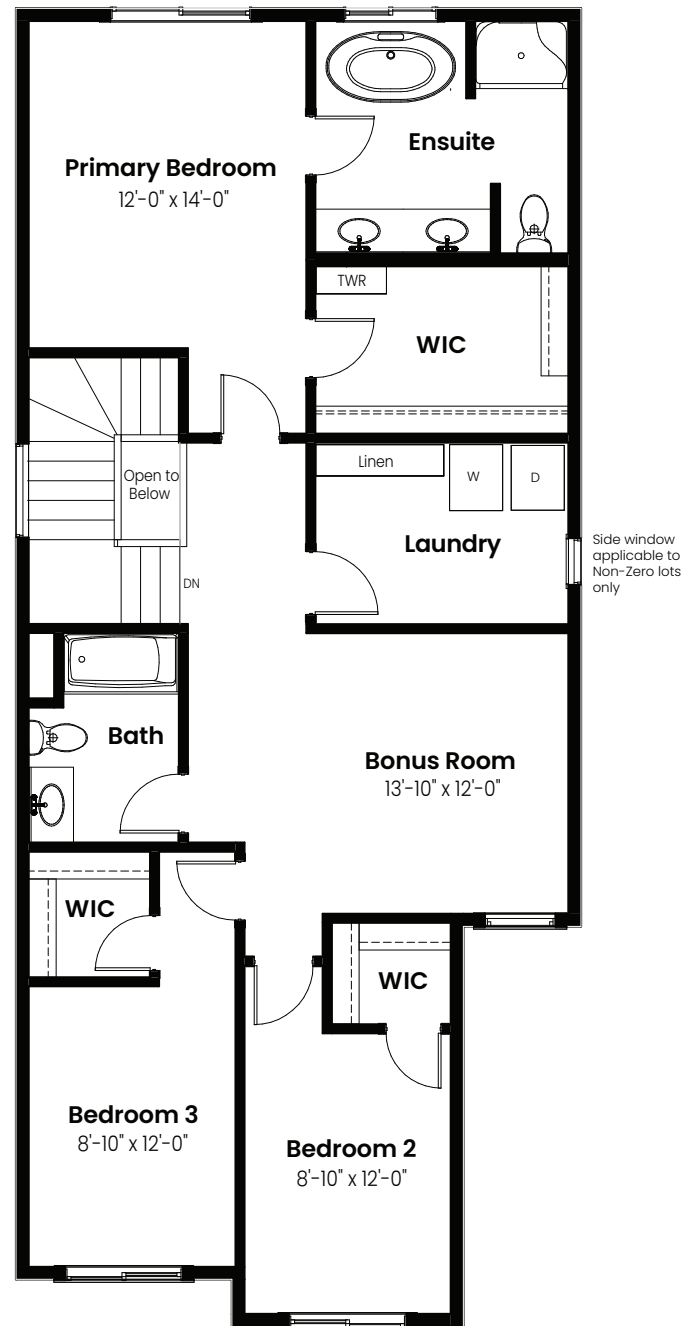
3 Beds | 2.5 Baths | 2,094 Sq. Ft. | 24' Wide

# Pisa

## Options



Main Floor Bedroom &  
Bathroom Option: 864 Sq Ft



4 Piece Ensuite Option: 1230 Sq Ft

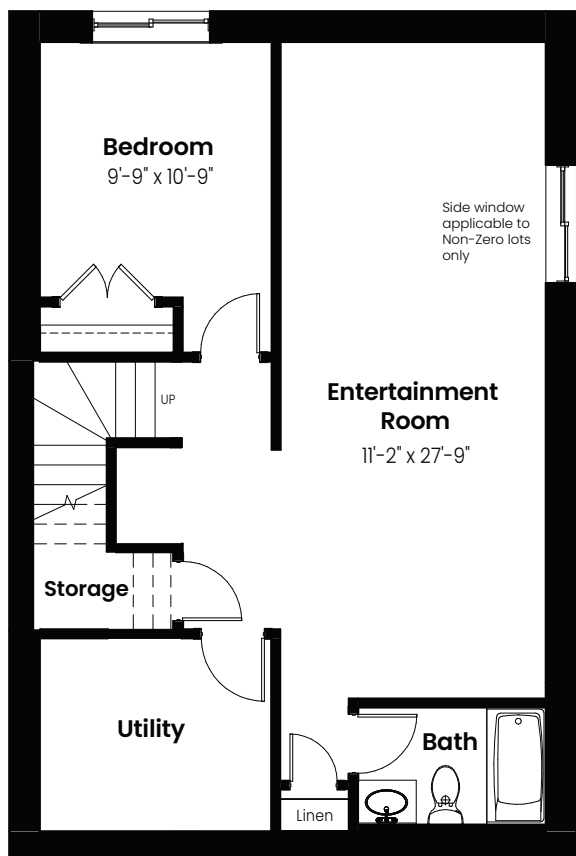


© 2025 Landmark Group of Companies Inc. All rights reserved. Any use or reproduction in whole or in part of these promotional materials without the prior written authorization of Landmark Group of Companies Inc. is strictly prohibited. Floor plans, specifications, pricing and dimensions shown are approximate and subject to change without notice. Artist rendering shown. Interior room dimensions are taken from inside of walls. Garage dimensions are taken from outside of walls. Revised on 01/13/2025.

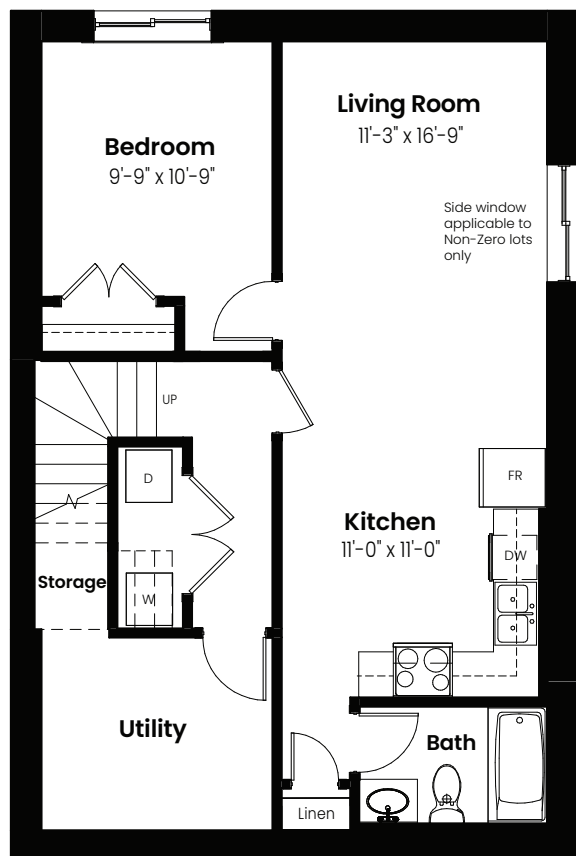
3 Beds | 2.5 Baths | 2,094 Sq. Ft. | 24' Wide

Pisa

# Basement Options



Basement Development  
Option: 634 Sq Ft



Basement Suite Option: 634 Sq Ft



© 2025 Landmark Group of Companies Inc. All rights reserved. Any use or reproduction in whole or in part of these promotional materials without the prior written authorization of Landmark Group of Companies Inc. is strictly prohibited. Floor plans, specifications, pricing and dimensions shown are approximate and subject to change without notice. Artist rendering shown. Interior room dimensions are taken from inside of walls. Garage dimensions are taken from outside of walls. Revised on 01/13/2025.



3 Beds | 2.5 Baths | 2,094 Sq. Ft. | 24' Wide

# Pisa

## Elevation



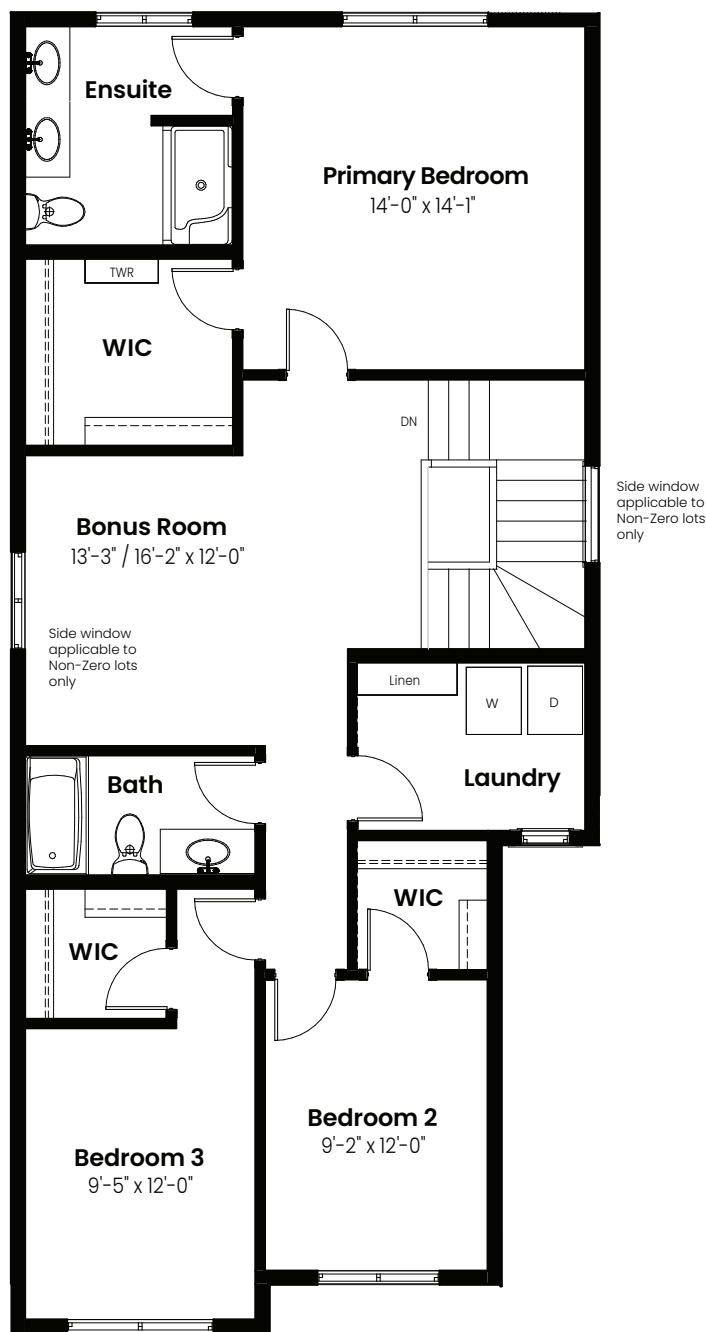
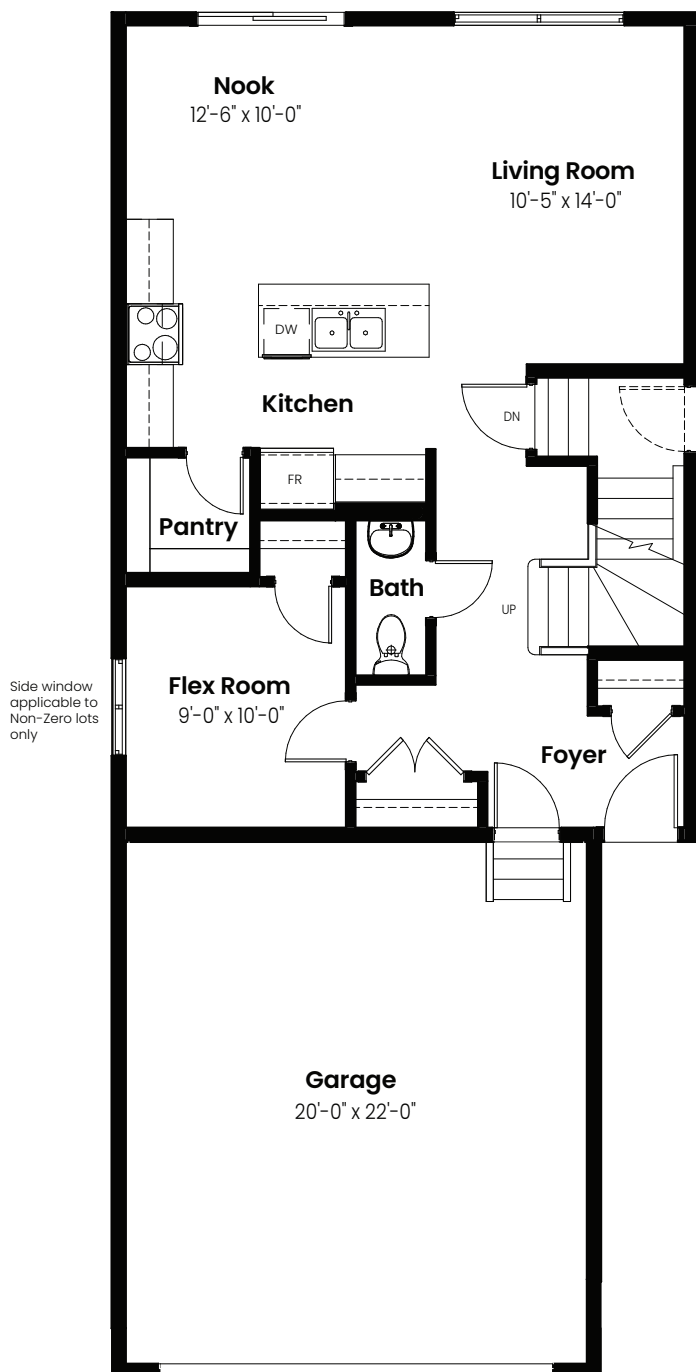
© 2025 Landmark Group of Companies Inc. All rights reserved. Any use or reproduction in whole or in part of these promotional materials without the prior written authorization of Landmark Group of Companies Inc. is strictly prohibited. Floor plans, specifications, pricing and dimensions shown are approximate and subject to change without notice. Artist rendering shown. Interior room dimensions are taken from inside of walls. Garage dimensions are taken from outside of walls. Revised on 01/13/2025.

3 Bedrooms | 2.5 Bathrooms

# Nile

# 2,004 sqft

## 24' Wide

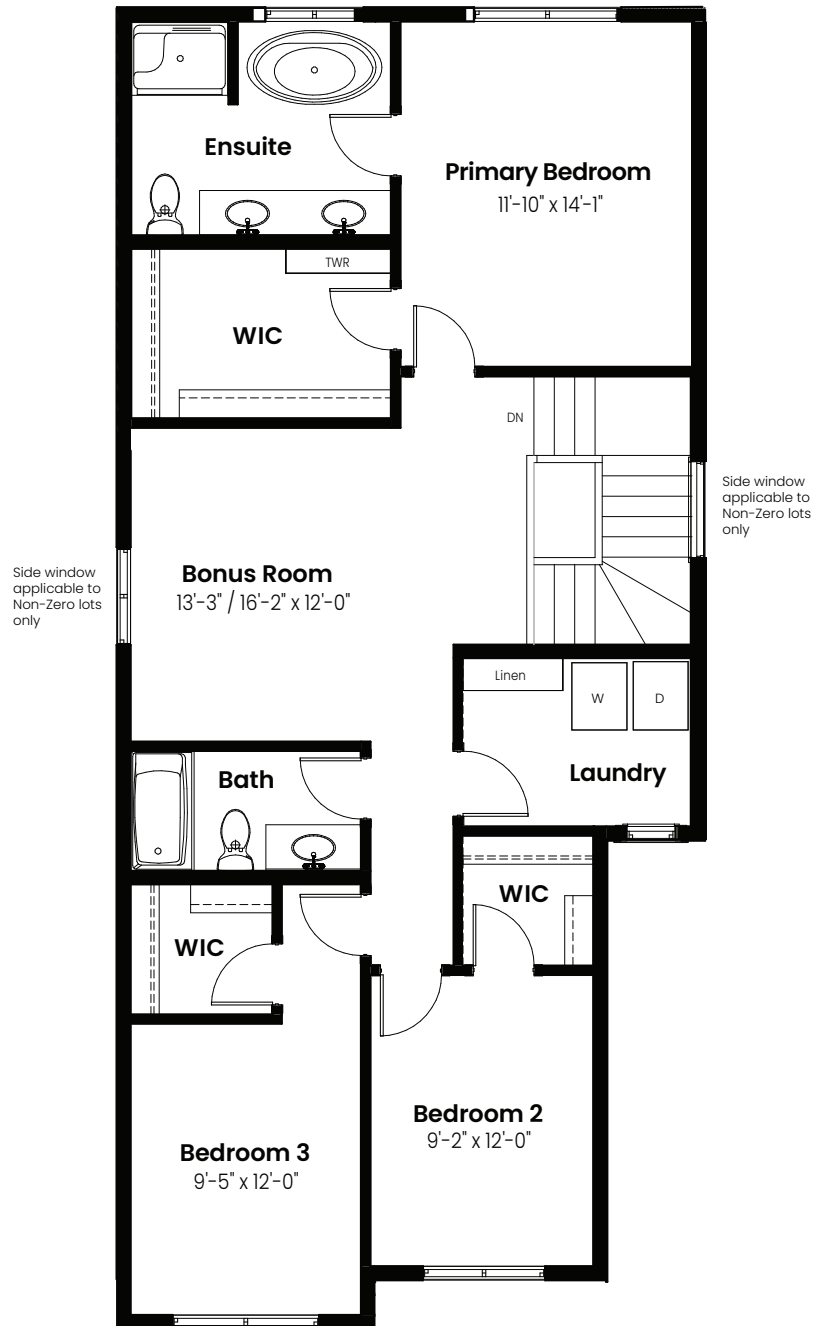


© 2025 Landmark Group of Companies Inc. All rights reserved. Any use or reproduction in whole or in part of these promotional materials without the prior written authorization of Landmark Group of Companies Inc. is strictly prohibited. Floor plans, specifications, pricing and dimensions shown are approximate and subject to change without notice. Artist rendering shown. Interior room dimensions are taken from inside of walls. Garage dimensions are taken from outside of walls. Revised on 01/17/2025.

3 Beds | 2.5 Baths | 2,004 Sq. Ft. | 24' Wide

# Nile

## Options



4 Piece Ensuite Option: 1187 Sq Ft

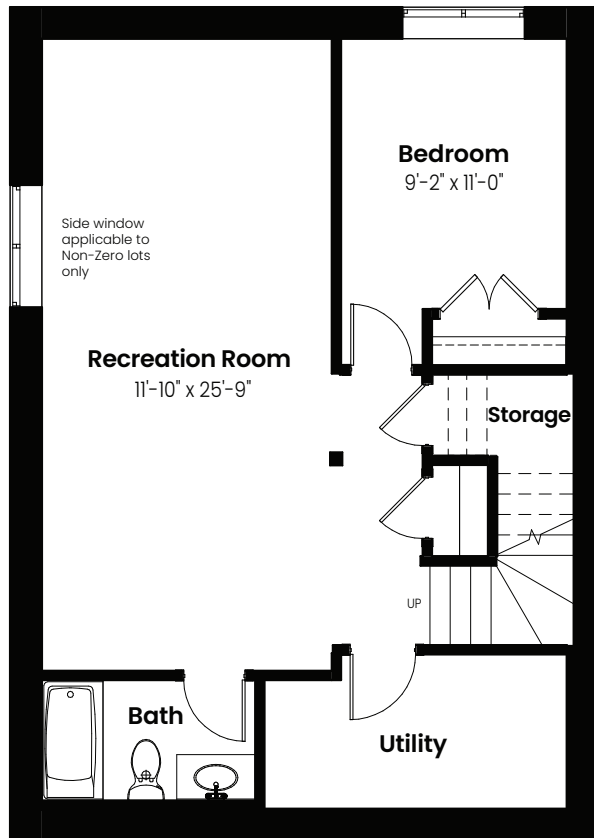


© 2025 Landmark Group of Companies Inc. All rights reserved. Any use or reproduction in whole or in part of these promotional materials without the prior written authorization of Landmark Group of Companies Inc. is strictly prohibited. Floor plans, specifications, pricing and dimensions shown are approximate and subject to change without notice. Artist rendering shown. Interior room dimensions are taken from inside of walls. Garage dimensions are taken from outside of walls. Revised on 01/17/2025.

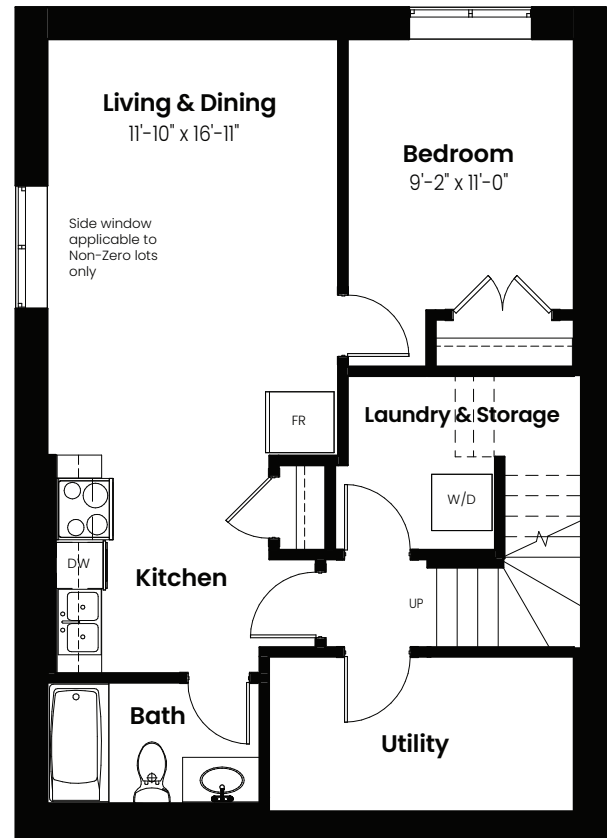
3 Beds | 2.5 Baths | 2,004 Sq. Ft. | 24' Wide

# Nile

## Basement Options



Basement Development  
Option: 610 Sq Ft



Basement Suite Option: 610 Sq Ft



© 2025 Landmark Group of Companies Inc. All rights reserved. Any use or reproduction in whole or in part of these promotional materials without the prior written authorization of Landmark Group of Companies Inc. is strictly prohibited. Floor plans, specifications, pricing and dimensions shown are approximate and subject to change without notice. Artist rendering shown. Interior room dimensions are taken from inside of walls. Garage dimensions are taken from outside of walls. Revised on 01/17/2025.



3 Beds | 2.5 Baths | 2,004 Sq. Ft. | 24' Wide

# Nile

## Elevation



© 2025 Landmark Group of Companies Inc. All rights reserved. Any use or reproduction in whole or in part of these promotional materials without the prior written authorization of Landmark Group of Companies Inc. is strictly prohibited. Floor plans, specifications, pricing and dimensions shown are approximate and subject to change without notice. Artist rendering shown. Interior room dimensions are taken from inside of walls. Garage dimensions are taken from outside of walls. Revised on 01/17/2025.

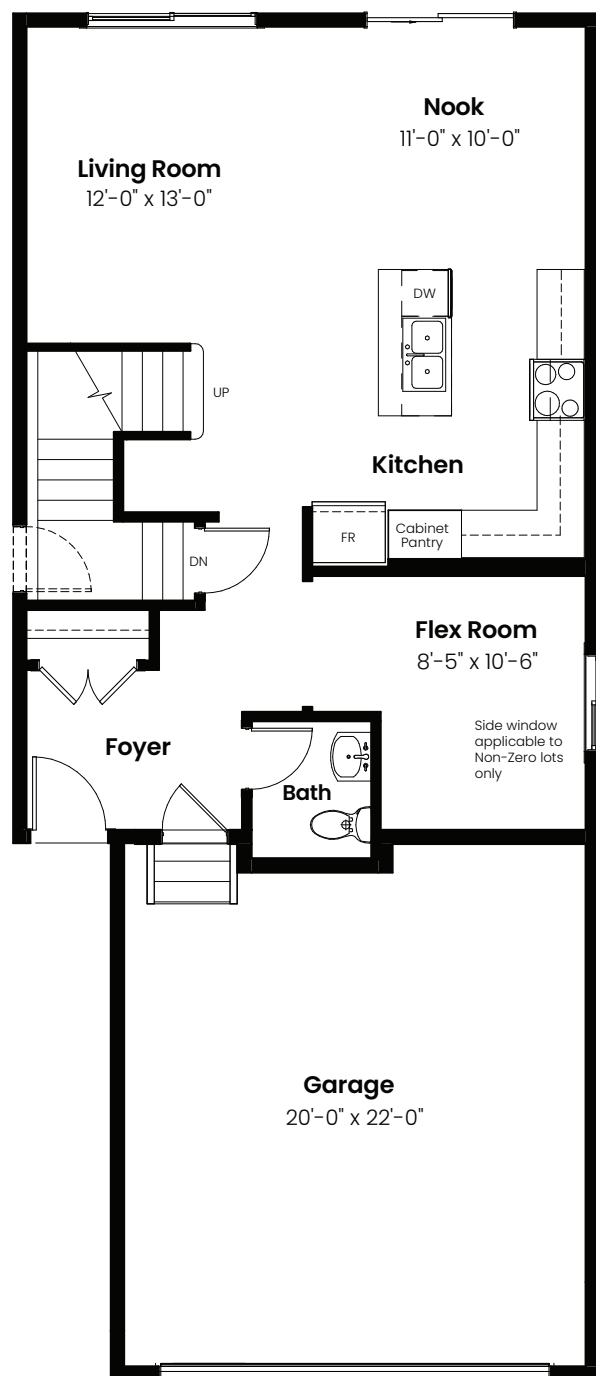


3 Bedrooms | 2.5 Bathrooms

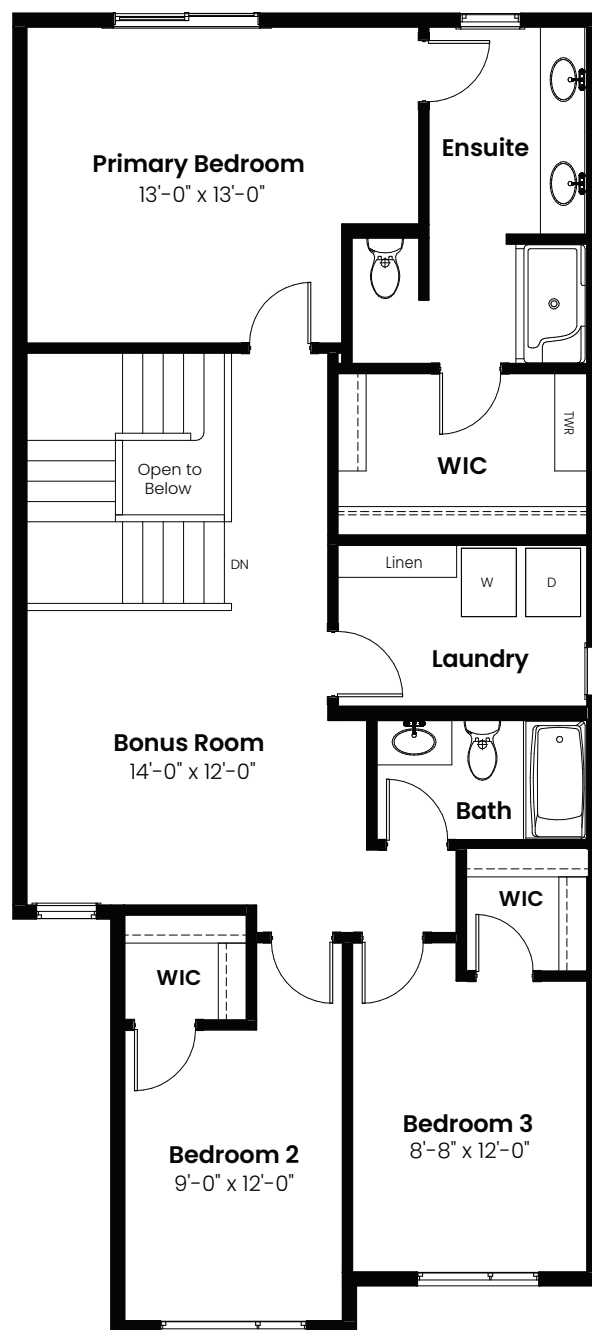
# Petra

# 2,016 sqft

24' Wide



Main Floor: 823 Sq Ft



Second Floor: 1193 Sq Ft

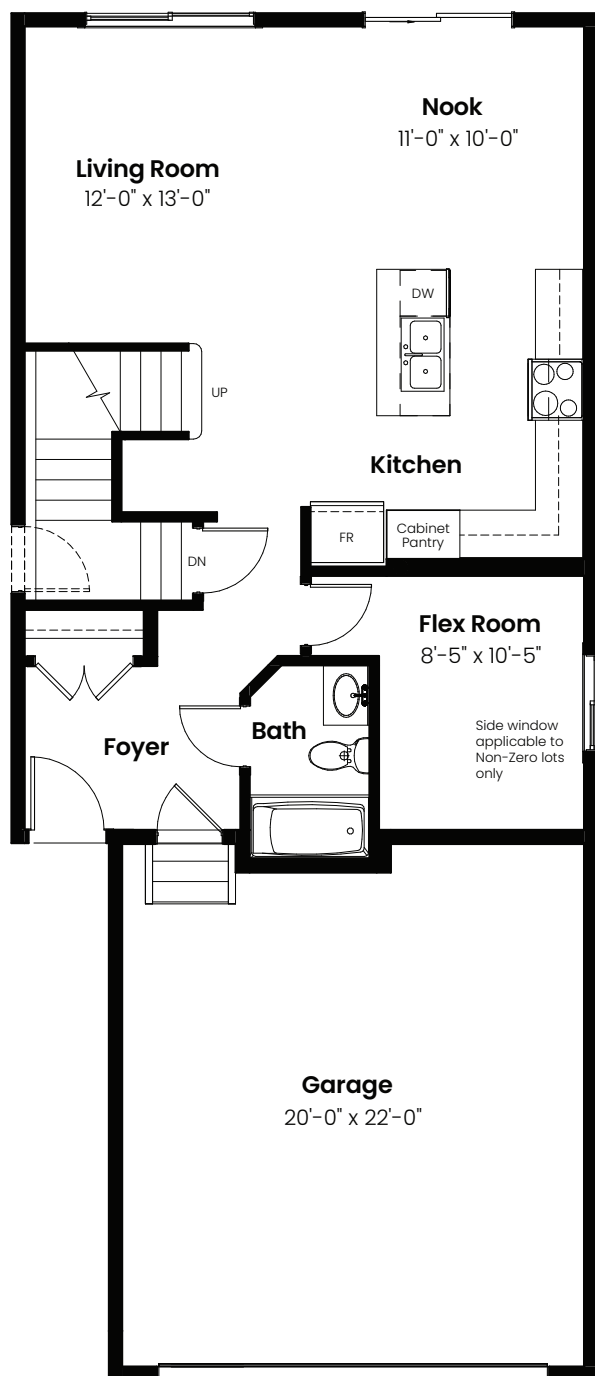


© 2025 Landmark Group of Companies Inc. All rights reserved. Any use or reproduction in whole or in part of these promotional materials without the prior written authorization of Landmark Group of Companies Inc. is strictly prohibited. Floor plans, specifications, pricing and dimensions shown are approximate and subject to change without notice. Artist rendering shown. Interior room dimensions are taken from inside of walls. Garage dimensions are taken from outside of walls. Revised on 01/17/2025.

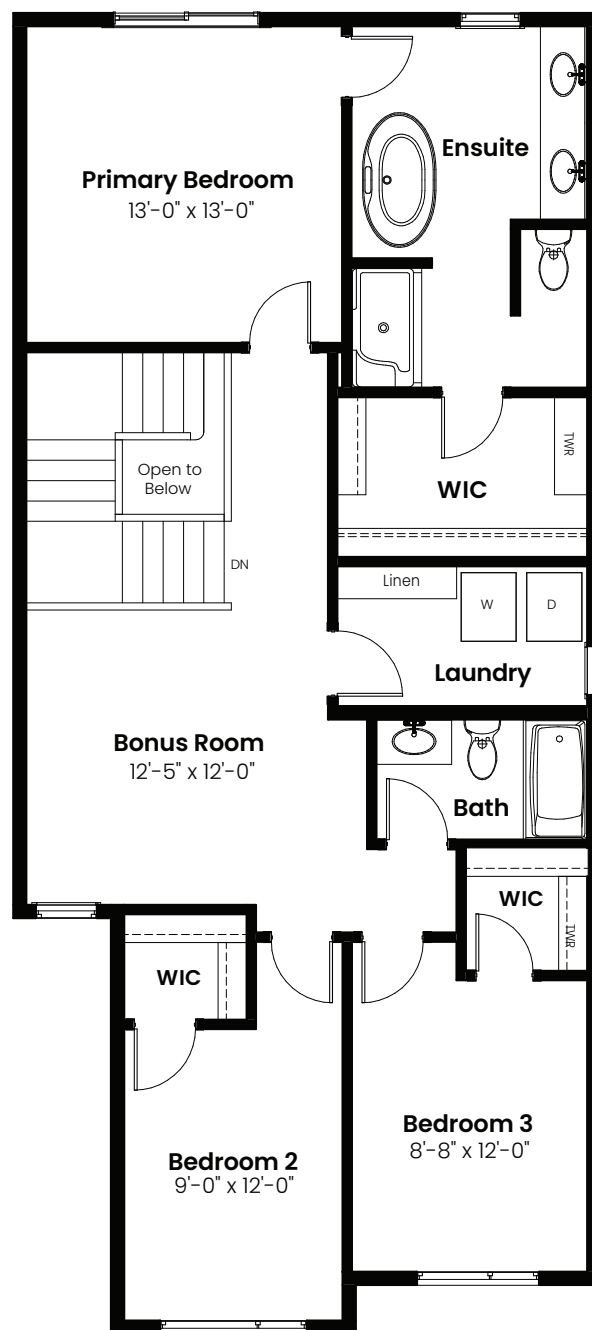
3 Beds | 2.5 Baths | 2,016 Sq. Ft. | 24' Wide

# Petra

## Options



Main Floor Bathroom Option: 823 Sq Ft



4 Piece Ensuite Option: 1193 Sq Ft

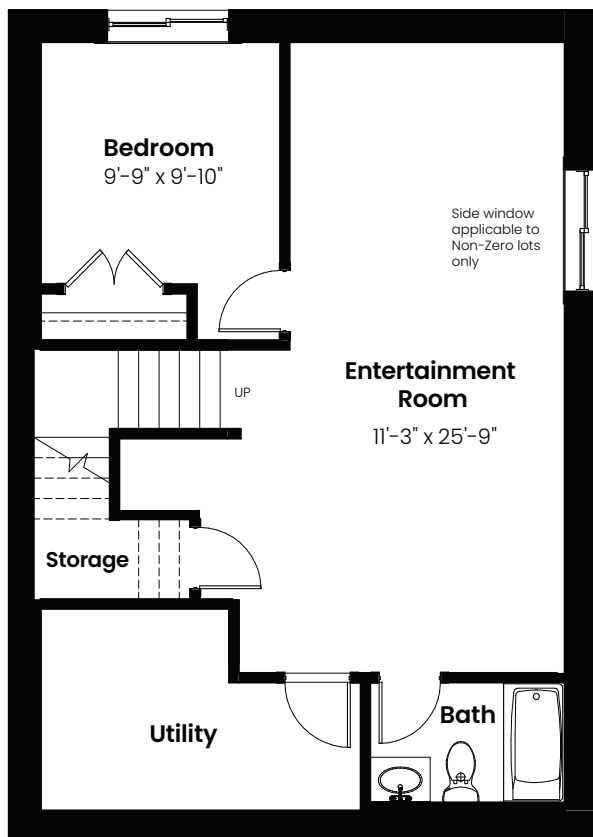


© 2025 Landmark Group of Companies Inc. All rights reserved. Any use or reproduction in whole or in part of these promotional materials without the prior written authorization of Landmark Group of Companies Inc. is strictly prohibited. Floor plans, specifications, pricing and dimensions shown are approximate and subject to change without notice. Artist rendering shown. Interior room dimensions are taken from inside of walls. Garage dimensions are taken from outside of walls. Revised on 01/17/2025.

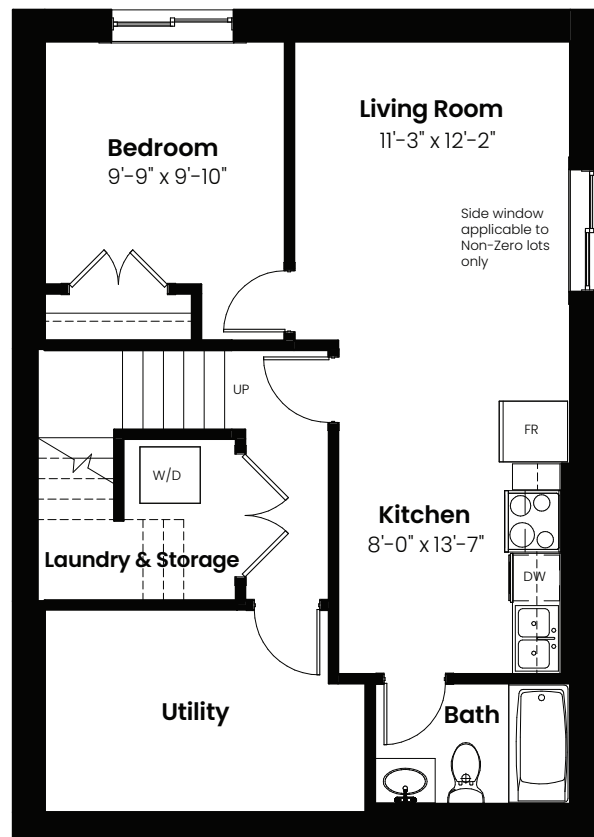
3 Beds | 2.5 Baths | 2,016 Sq. Ft. | 24' Wide

# Petra

## Basement Options



Basement Development  
Option: 570 Sq Ft



Basement Suite Option: 570 Sq Ft



© 2025 Landmark Group of Companies Inc. All rights reserved. Any use or reproduction in whole or in part of these promotional materials without the prior written authorization of Landmark Group of Companies Inc. is strictly prohibited. Floor plans, specifications, pricing and dimensions shown are approximate and subject to change without notice. Artist rendering shown. Interior room dimensions are taken from inside of walls. Garage dimensions are taken from outside of walls. Revised on 01/17/2025.



3 Beds | 2.5 Baths | 2,016 Sq. Ft. | 24' Wide

# Petra

## Elevation



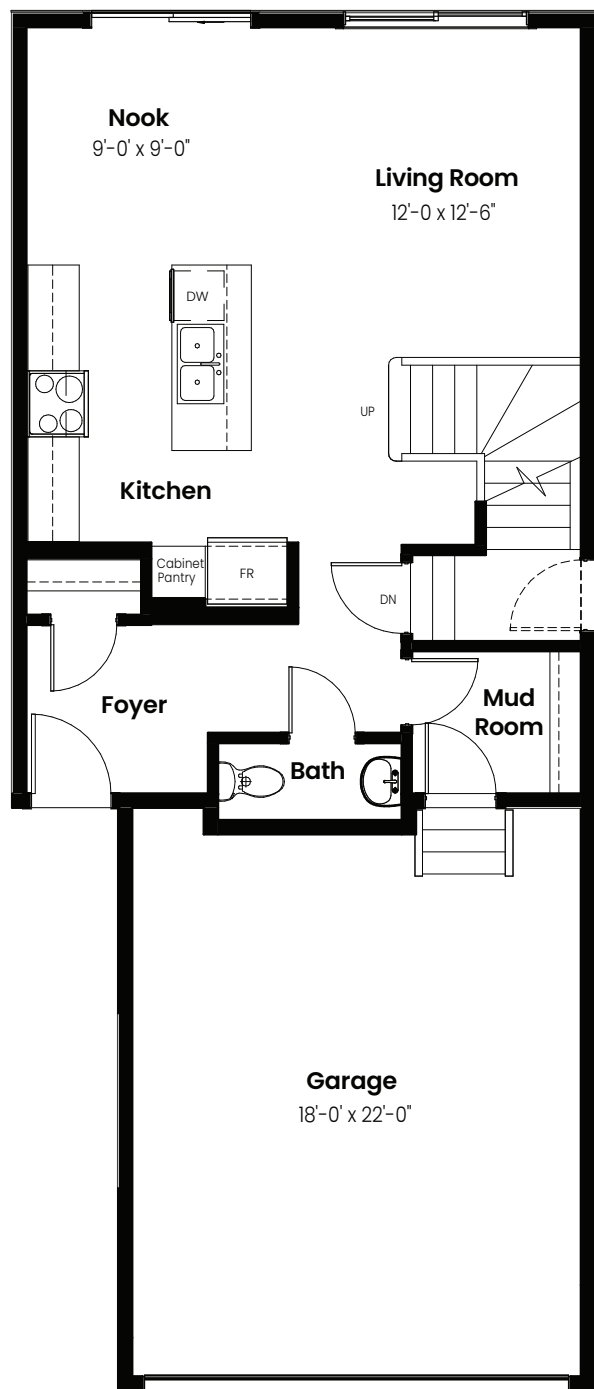
© 2025 Landmark Group of Companies Inc. All rights reserved. Any use or reproduction in whole or in part of these promotional materials without the prior written authorization of Landmark Group of Companies Inc. is strictly prohibited. Floor plans, specifications, pricing and dimensions shown are approximate and subject to change without notice. Artist rendering shown. Interior room dimensions are taken from inside of walls. Garage dimensions are taken from outside of walls. Revised on 01/17/2025.

3 Bedrooms | 2.5 Bathrooms

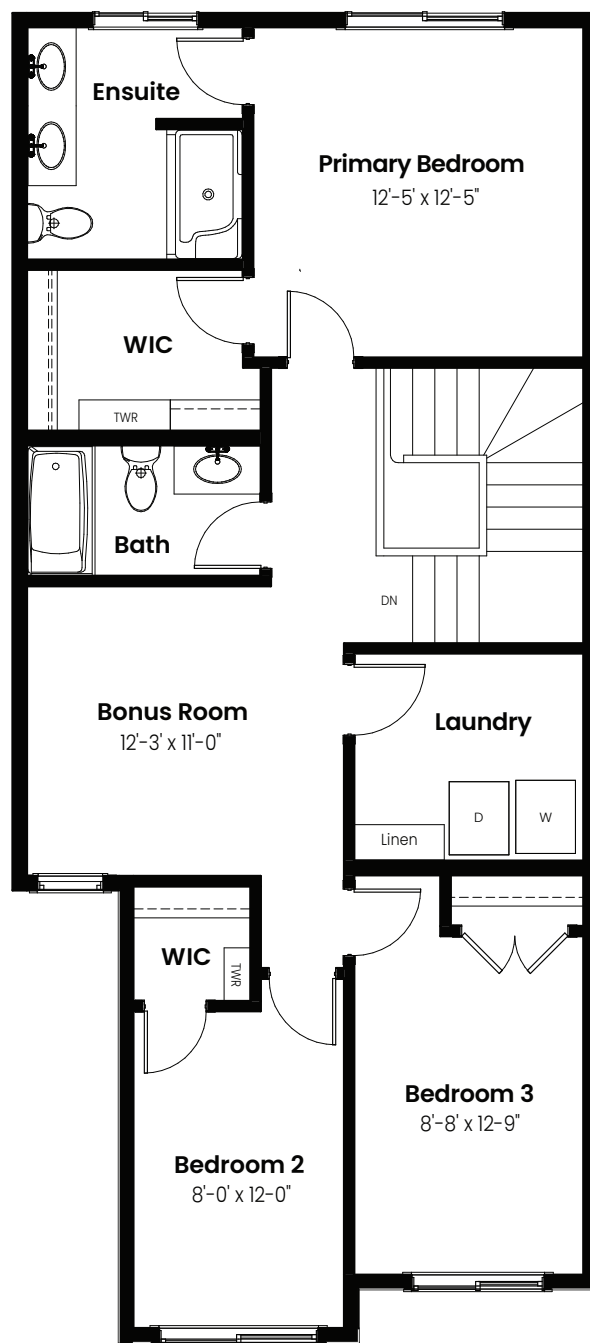
# Opera

1,670 sqft

22' Wide



Main Floor: 668 Sq Ft



Second Floor: 1002 Sq Ft



© 2025 Landmark Group of Companies Inc. All rights reserved. Any use or reproduction in whole or in part of these promotional materials without the prior written authorization of Landmark Group of Companies Inc. is strictly prohibited. Floor plans, specifications, pricing and dimensions shown are approximate and subject to change without notice. Artist rendering shown. Interior room dimensions are taken from inside of walls. Garage dimensions are taken from outside of walls. Revised on 01/17/2025.

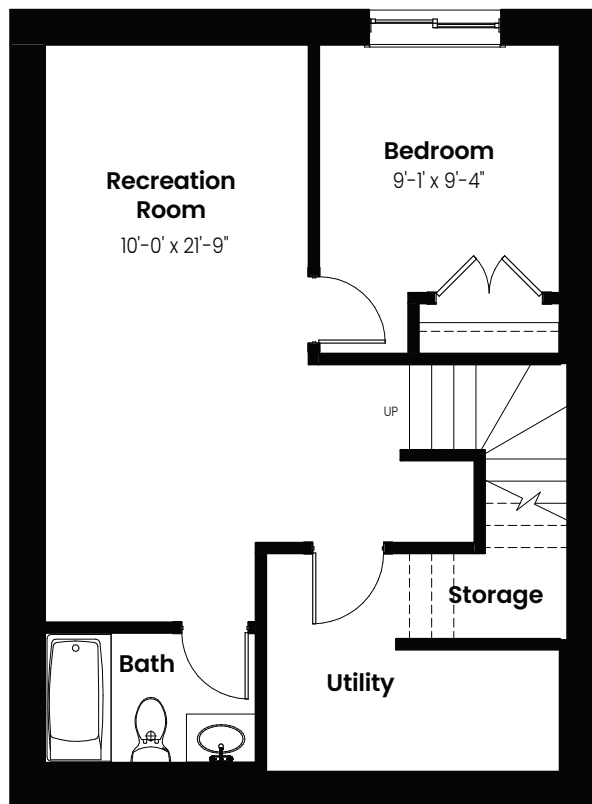




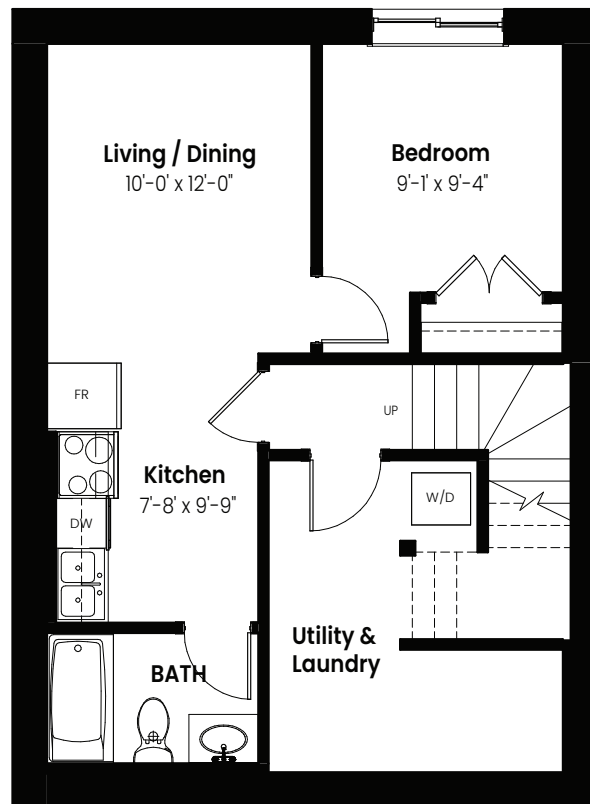
3 Beds | 2.5 Baths | 1,670 Sq. Ft. | 22' Wide

# Opera

## Basement Options



Basement Development  
Option: 454 Sq Ft



Basement Suite Option: 454 Sq Ft



© 2025 Landmark Group of Companies Inc. All rights reserved. Any use or reproduction in whole or in part of these promotional materials without the prior written authorization of Landmark Group of Companies Inc. is strictly prohibited. Floor plans, specifications, pricing and dimensions shown are approximate and subject to change without notice. Artist rendering shown. Interior room dimensions are taken from inside of walls. Garage dimensions are taken from outside of walls. Revised on 01/17/2025.



3 Beds | 2.5 Baths | 1,670 Sq. Ft. | 22' Wide

# Opera

## Elevation



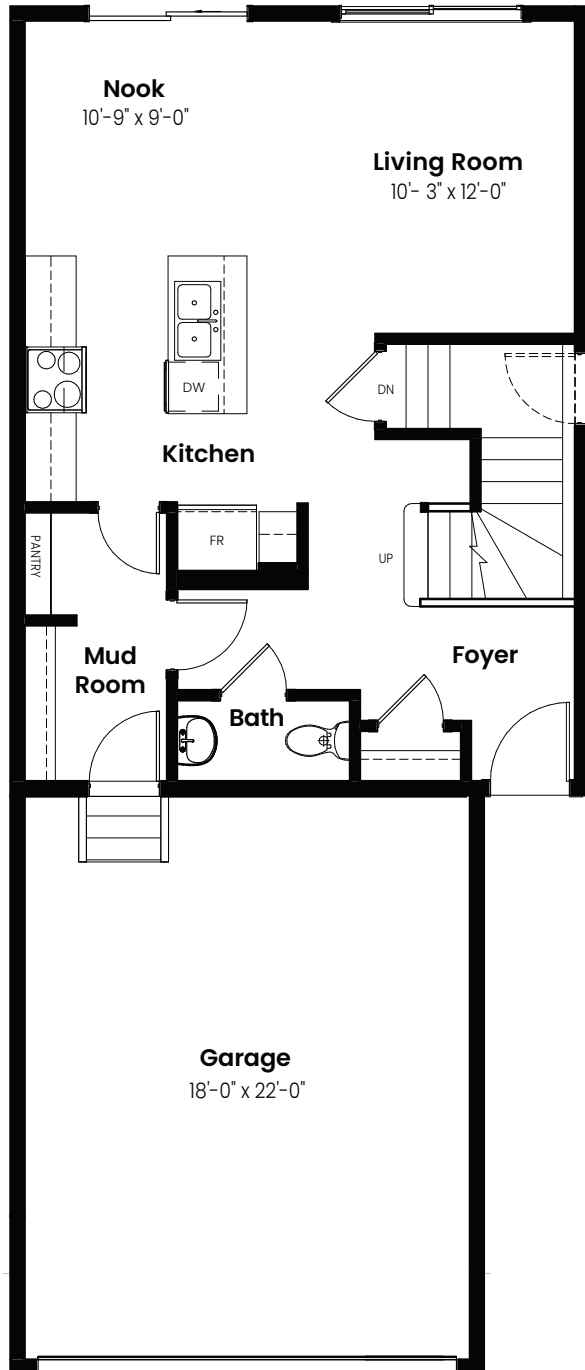
© 2025 Landmark Group of Companies Inc. All rights reserved. Any use or reproduction in whole or in part of these promotional materials without the prior written authorization of Landmark Group of Companies Inc. is strictly prohibited. Floor plans, specifications, pricing and dimensions shown are approximate and subject to change without notice. Artist rendering shown. Interior room dimensions are taken from inside of walls. Garage dimensions are taken from outside of walls. Revised on 01/17/2025.

3 Bedrooms | 2.5 Bathrooms

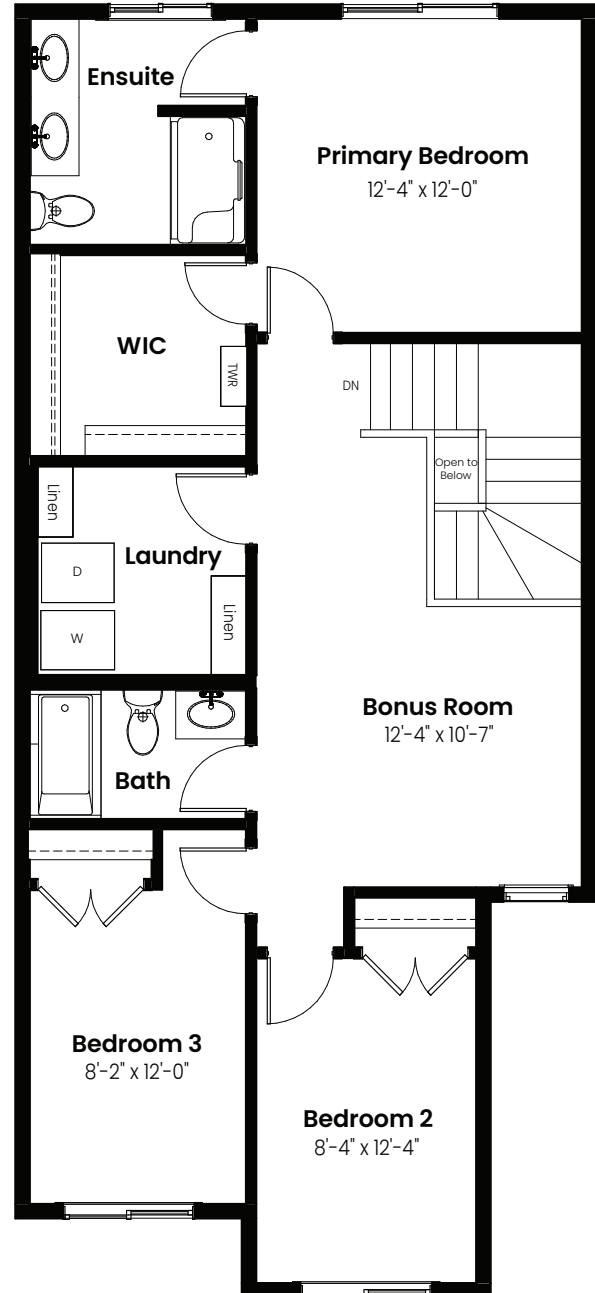
# Louvre

# 1,649 sqft

22' Wide



Main Floor: 660 Sq Ft



Second Floor: 979 Sq Ft

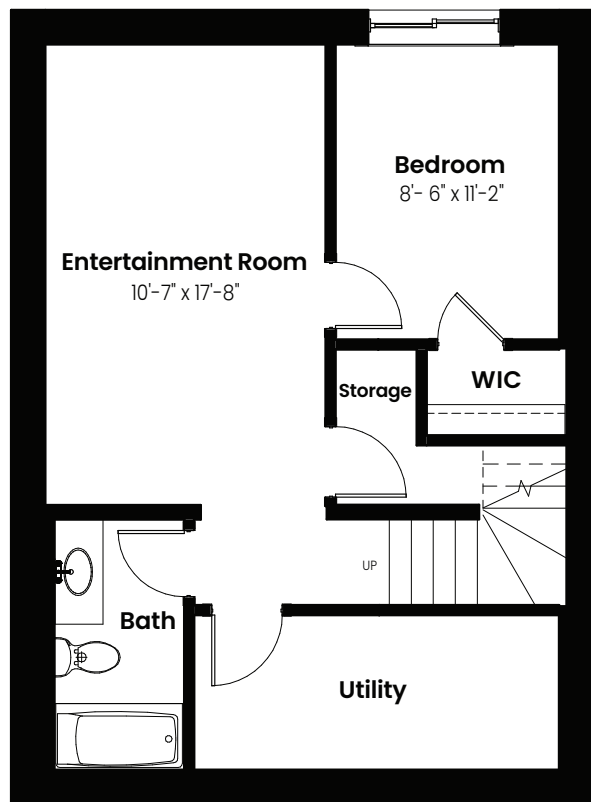


© 2024 Landmark Group of Companies Inc. All rights reserved. Any use or reproduction in whole or in part of these promotional materials without the prior written authorization of Landmark Group of Companies Inc. is strictly prohibited. Floor plans, specifications, pricing and dimensions shown are approximate and subject to change without notice. Artist rendering shown. Interior room dimensions are taken from inside of walls. Garage dimensions are taken from outside of walls. Revised on 09/03/2024.

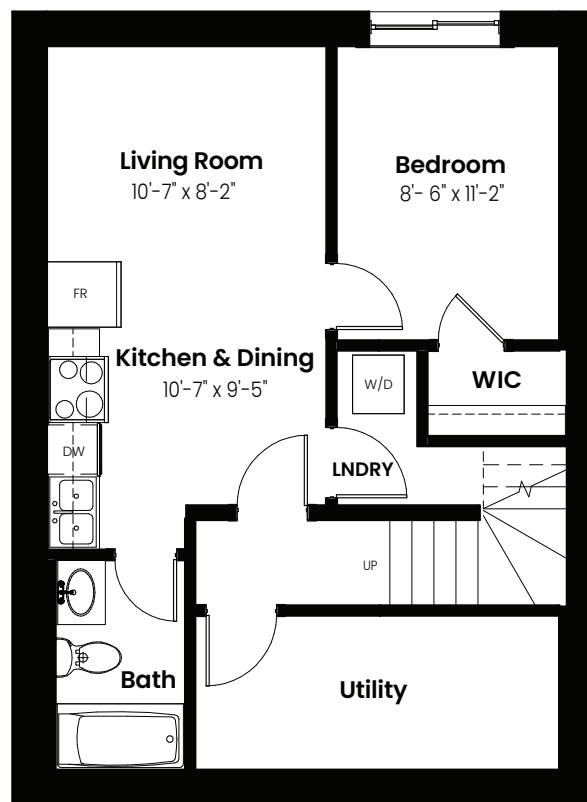
3 Beds | 2.5 Baths | 1,649 Sq. Ft. | 22' Wide

# Louvre

## Basement Options



Basement Development  
Option: 463 Sq Ft



Basement Suite Option: 463 Sq Ft



© 2024 Landmark Group of Companies Inc. All rights reserved. Any use or reproduction in whole or in part of these promotional materials without the prior written authorization of Landmark Group of Companies Inc. is strictly prohibited. Floor plans, specifications, pricing and dimensions shown are approximate and subject to change without notice. Artist rendering shown. Interior room dimensions are taken from inside of walls. Garage dimensions are taken from outside of walls. Revised on 09/03/2024.



3 Beds | 2.5 Baths | 1,649 Sq. Ft. | 22' Wide

# Louvre

## Elevation



© 2024 Landmark Group of Companies Inc. All rights reserved. Any use or reproduction in whole or in part of these promotional materials without the prior written authorization of Landmark Group of Companies Inc. is strictly prohibited. Floor plans, specifications, pricing and dimensions shown are approximate and subject to change without notice. Artist rendering shown. Interior room dimensions are taken from inside of walls. Garage dimensions are taken from outside of walls. Revised on 09/03/2024.