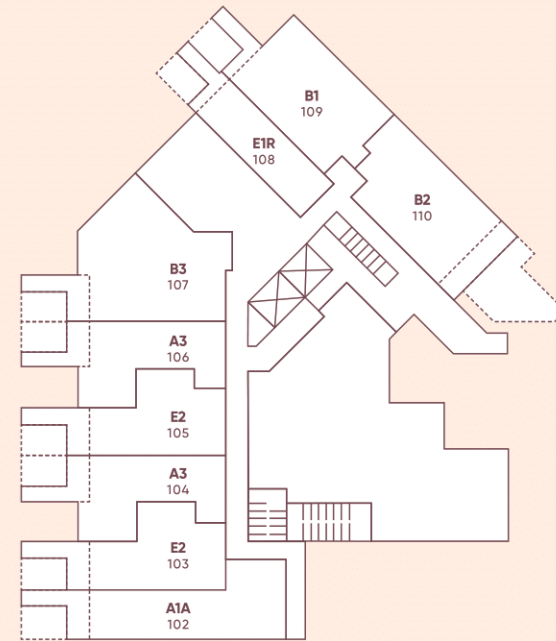
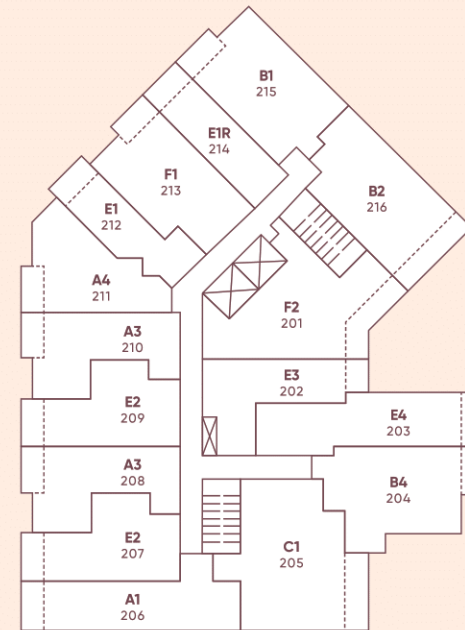




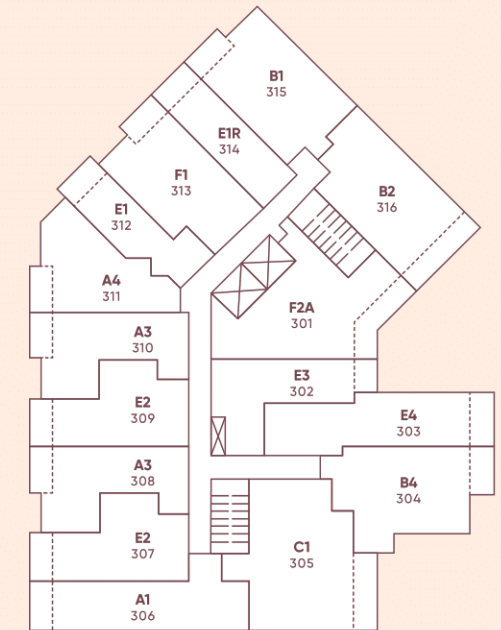
# SITE PLAN



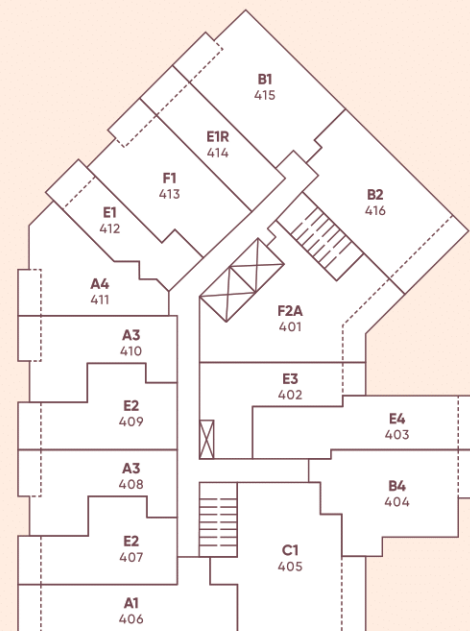
LEVEL 1



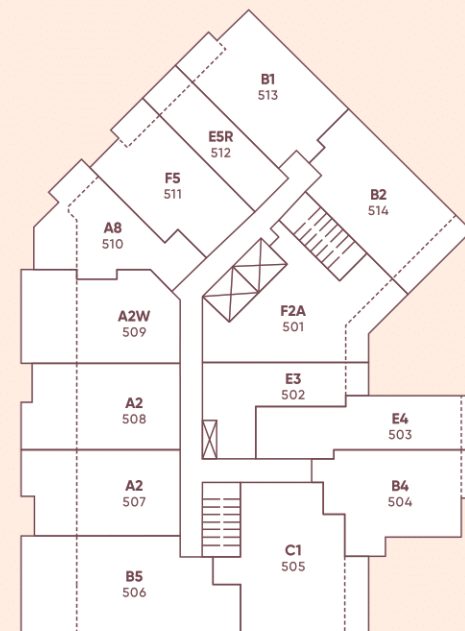
LEVEL 2



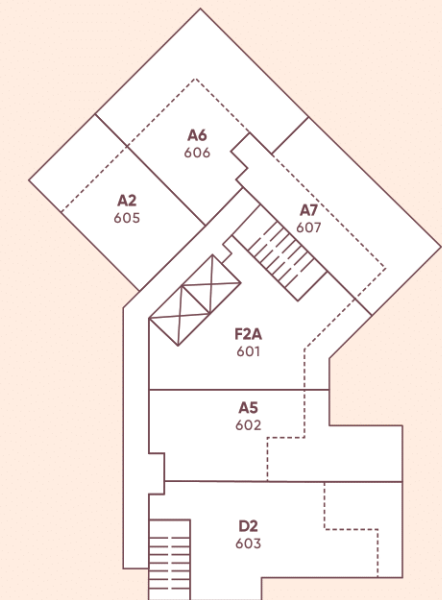
LEVEL 3



LEVEL 4



LEVEL 5



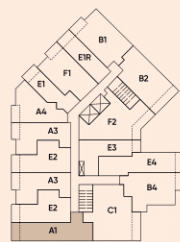
LEVEL 6

# A1

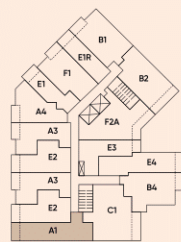
## 1 BED, 1 BATH

INTERIOR: 544 SQ FT | EXTERIOR: 51 SQ FT | TOTAL: 595 SQ FT

# Stowa



LEVEL 2



LEVELS 3-4

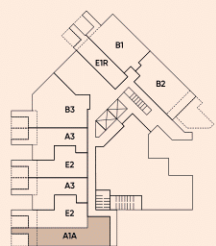


# A1A

## JR 2 BED, 1 BATH

INTERIOR: 590 SQ FT | EXTERIOR: 90 SQ FT | TOTAL: 680 SQ FT

# Stowa



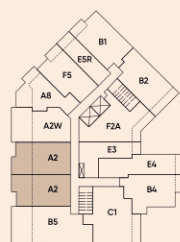
LEVEL 1



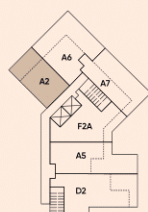
# A2 1 BED, 1 BATH

INTERIOR: 474 SQ FT | EXTERIOR: 199-243 SQ FT | TOTAL: 673-717 SQ FT

Stowa



LEVEL 5



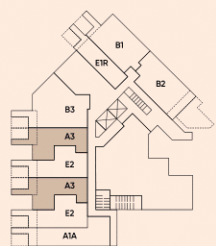
LEVEL 6



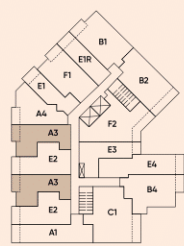
# A3 1 BED, 1 BATH

INTERIOR: 497 SQ FT | EXTERIOR: 50-86 SQ FT | TOTAL: 547-583 SQ FT

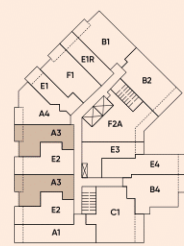
Stowa



LEVEL 1



LEVEL 2



LEVELS 3-4

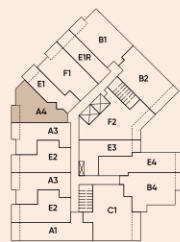


# A4

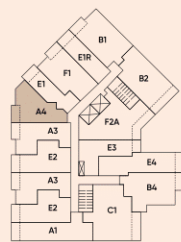
## 1 BED, 1 BATH

INTERIOR: 505 SQ FT | EXTERIOR: 51 SQ FT | TOTAL: 556 SQ FT

# Stowa



LEVEL 2



LEVELS 3-4

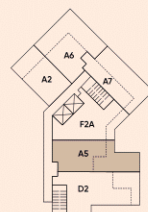
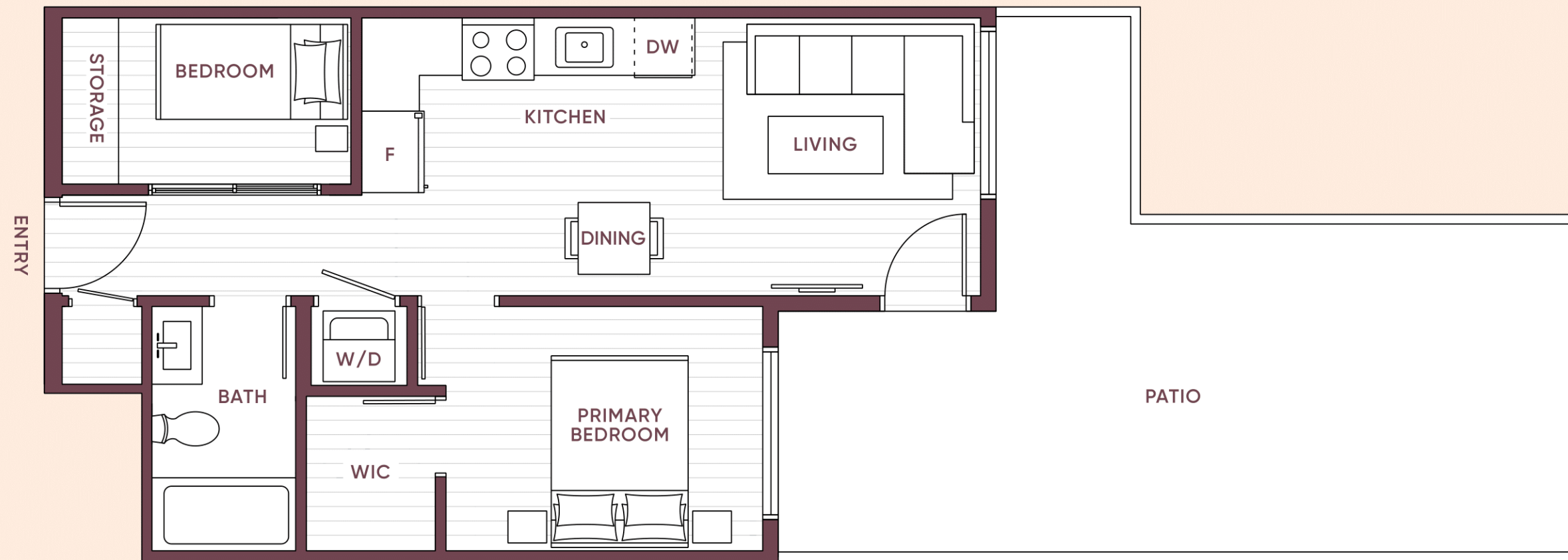


# A5

## JR 2 BED, 1 BATH

INTERIOR: 555 SQ FT | EXTERIOR: 350 SQ FT | TOTAL: 905 SQ FT

# Stowa



LEVEL 6

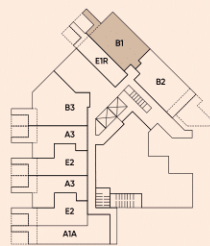


# B1

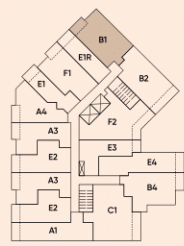
## 2 BED, 1.5 BATH

INTERIOR: 650 SQ FT | EXTERIOR: 50-89 SQ FT | TOTAL: 700-739 SQ FT

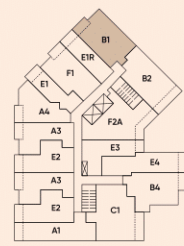
# Stowa



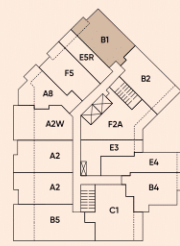
LEVEL 1



LEVEL 2



LEVELS 3-4



LEVEL 5

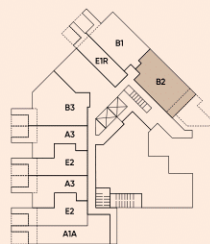
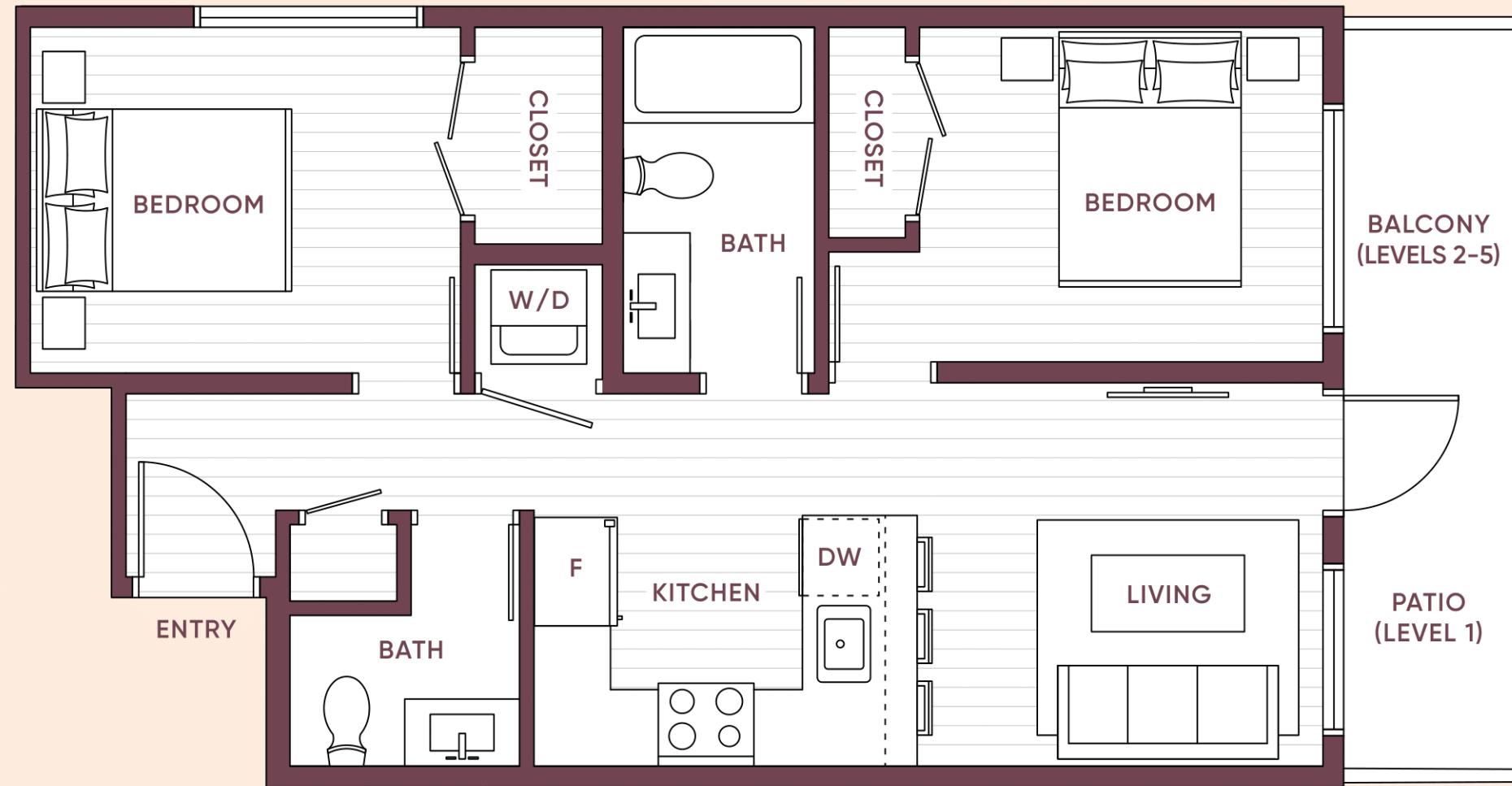


# B2

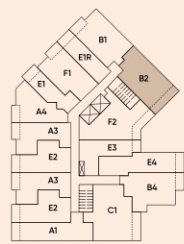
## 2 BED, 1.5 BATH

INTERIOR: 664-668 SQ FT | EXTERIOR: 86 SQ FT | TOTAL: 750-754 SQ FT

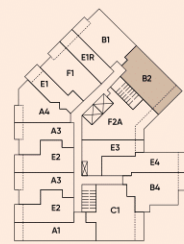
# Stowa



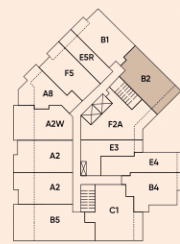
LEVEL 1



LEVEL 2



LEVELS 3-4



LEVEL 5

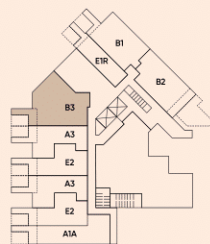
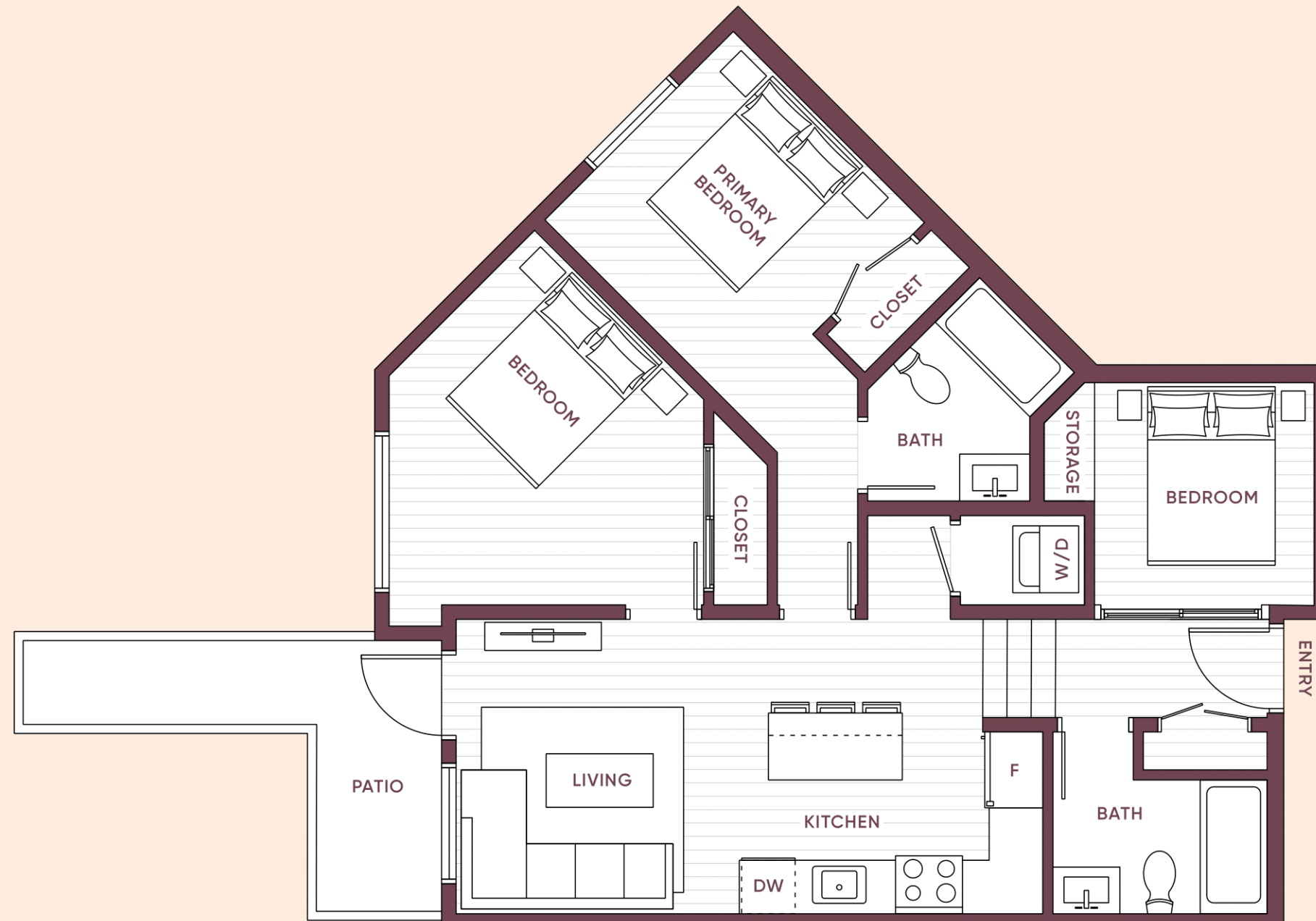


# B3

## JR 3 BED, 2 BATH

INTERIOR: 878 SQ FT | EXTERIOR: 87 SQ FT | TOTAL: 965 SQ FT

# Stowa



LEVEL 1

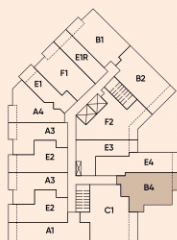


# B4

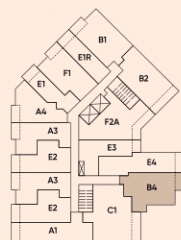
## 2 BED, 1 BATH

INTERIOR: 660 SQ FT | EXTERIOR: 50 SQ FT | TOTAL: 710 SQ FT

# Stowa



LEVEL 2



LEVELS 3-4



LEVEL 5

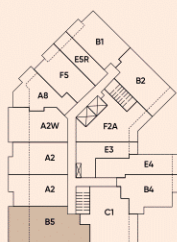


# B5

## 2 BED, 2 BATH

INTERIOR: 723 SQ FT | EXTERIOR: 280 SQ FT | TOTAL: 1,003 SQ FT

# Stowa



LEVEL 5

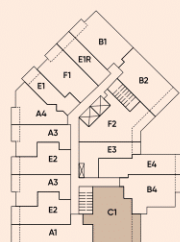


C1

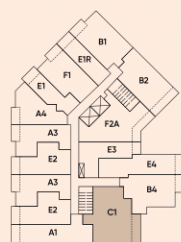
## JR 3 BED, 2 BATH

INTERIOR: 837 SQ FT | EXTERIOR: 82 SQ FT | TOTAL: 919 SQ FT

Stowa



LEVEL 2



LEVELS 3-4



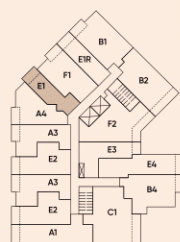
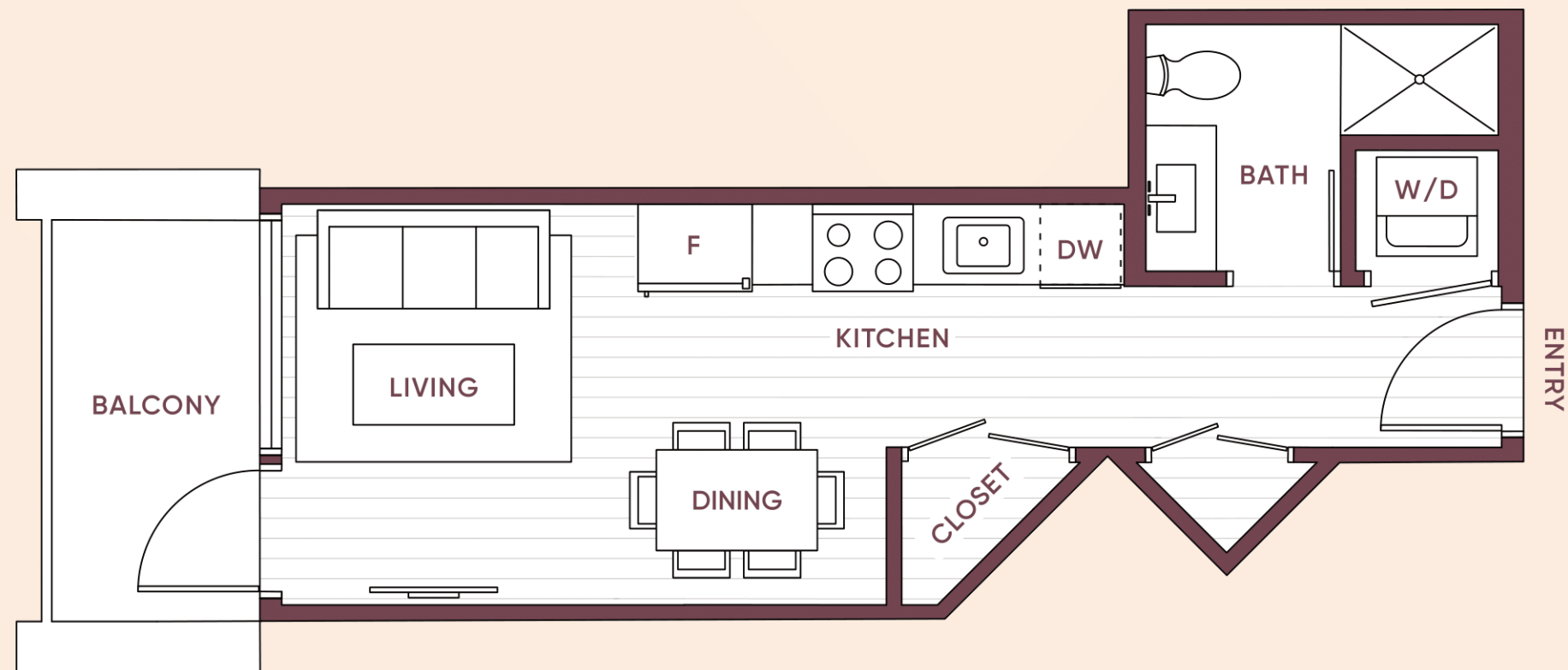
LEVEL 5

# E1

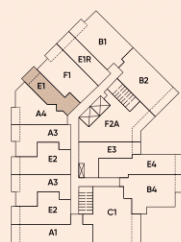
## STUDIO, 1 BATH

INTERIOR: 339 SQ FT | EXTERIOR: 50 SQ FT | TOTAL: 389 SQ FT

# Stowa



LEVEL 2



LEVELS 3-4

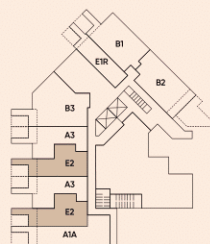
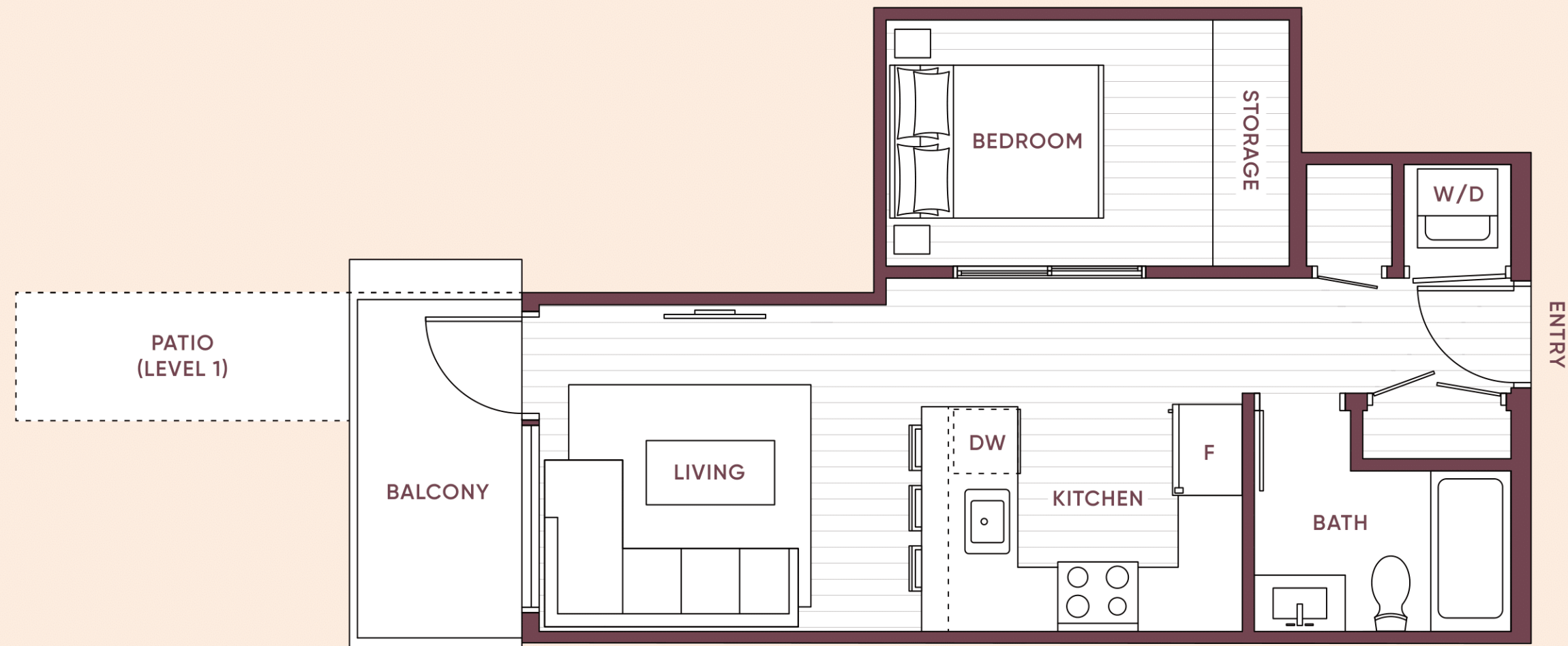


# E2

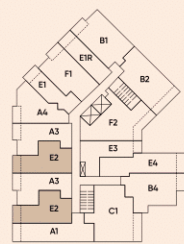
## JR 1 BED, 1 BATH

INTERIOR: 490-492 SQ FT | EXTERIOR: 50-87 SQ FT | TOTAL: 540-579 SQ FT

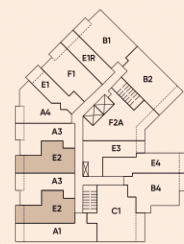
# Stowa



LEVEL 1



LEVEL 2



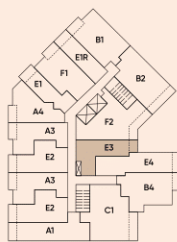
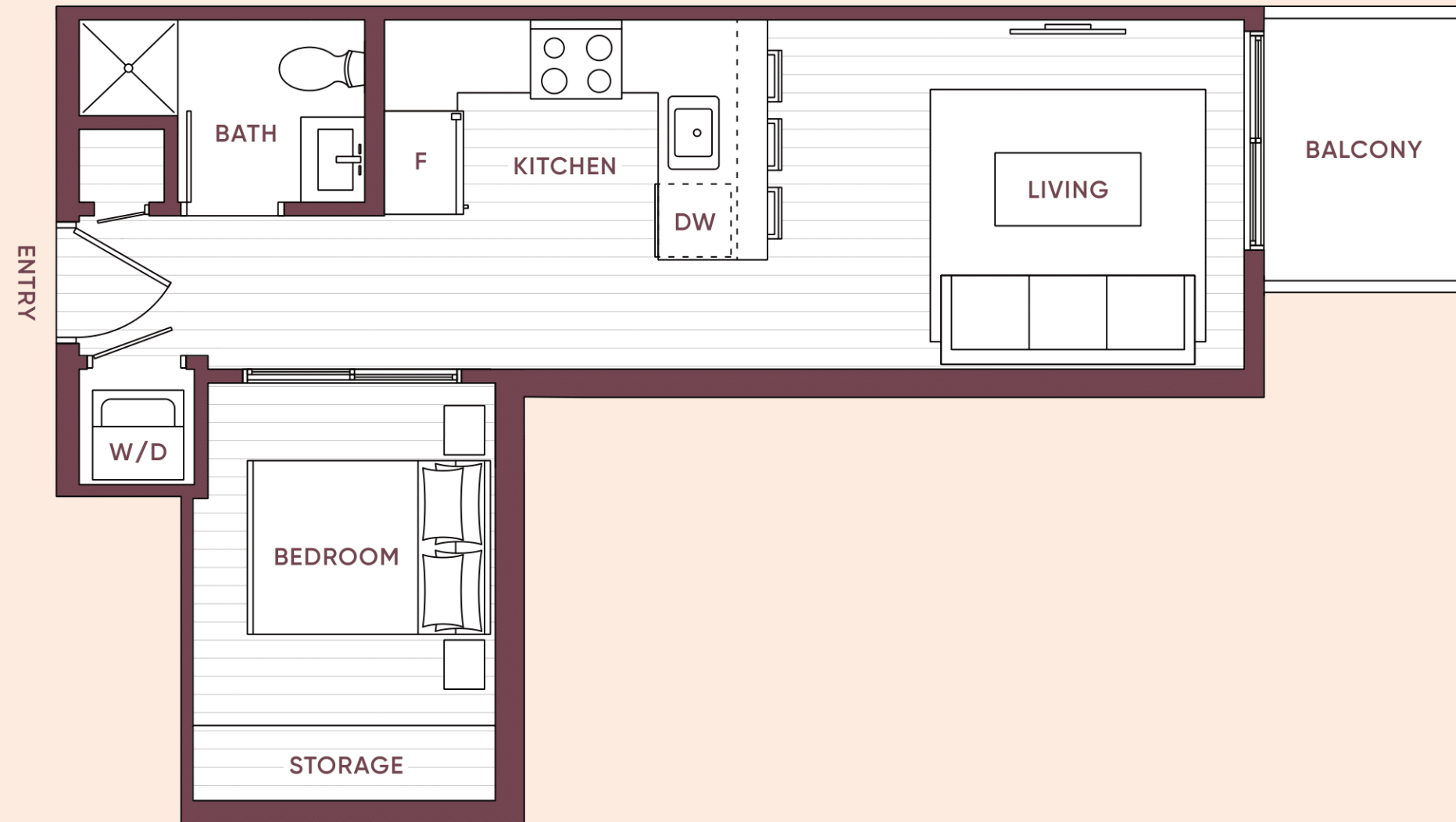
LEVELS 3-4

# E3

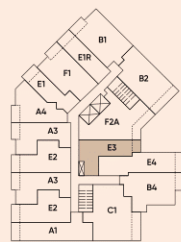
## JR 1 BED, 1 BATH

INTERIOR: 466 SQ FT | EXTERIOR: 40 SQ FT | TOTAL: 506 SQ FT

# Stowa



LEVEL 2



LEVELS 3-4



LEVEL 5

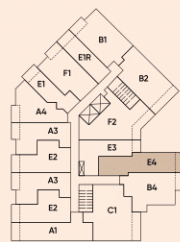


# E4

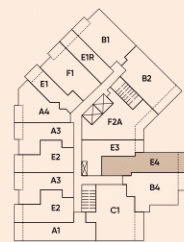
## JR 1 BED, 1 BATH

INTERIOR: 585 SQ FT | EXTERIOR: 58 SQ FT | TOTAL: 643 SQ FT

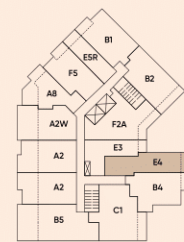
# Stowa



LEVEL 2



LEVELS 3-4



LEVEL 5

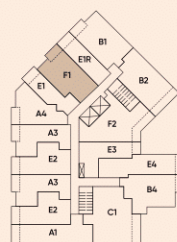


F1

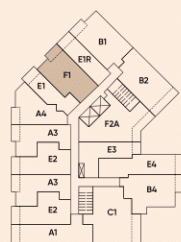
## JR 2 BED, 1 BATH

INTERIOR: 604 SQ FT | EXTERIOR: 50 SQ FT | TOTAL: 654 SQ FT

Stowa



LEVEL 2



LEVELS 3-4

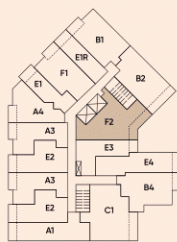
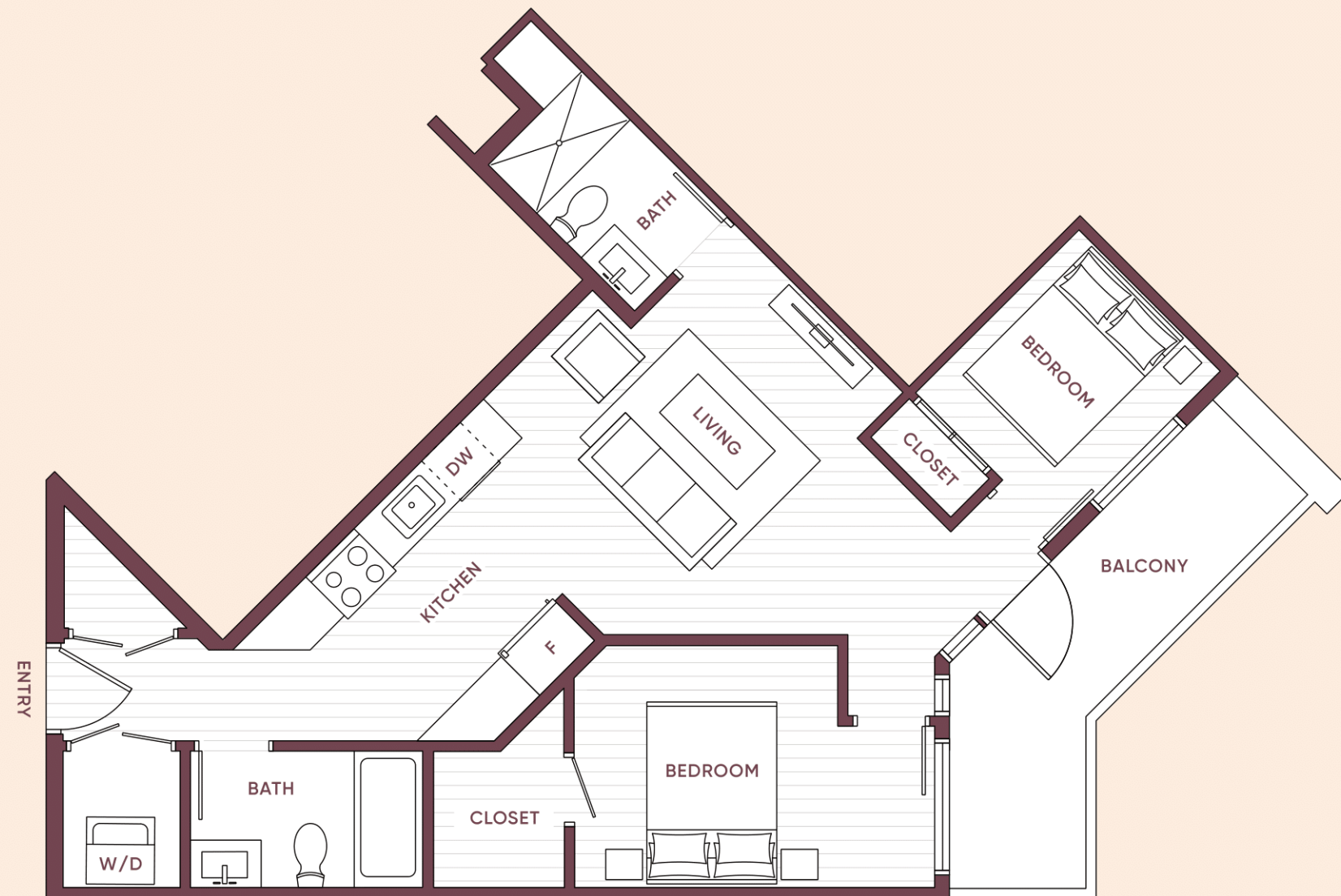


# F2

## 2 BED, 2 BATH

INTERIOR: 744 SQ FT | EXTERIOR: 97 SQ FT | TOTAL: 841 SQ FT

# Stowa



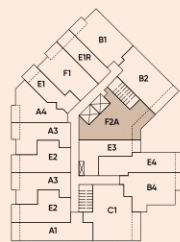
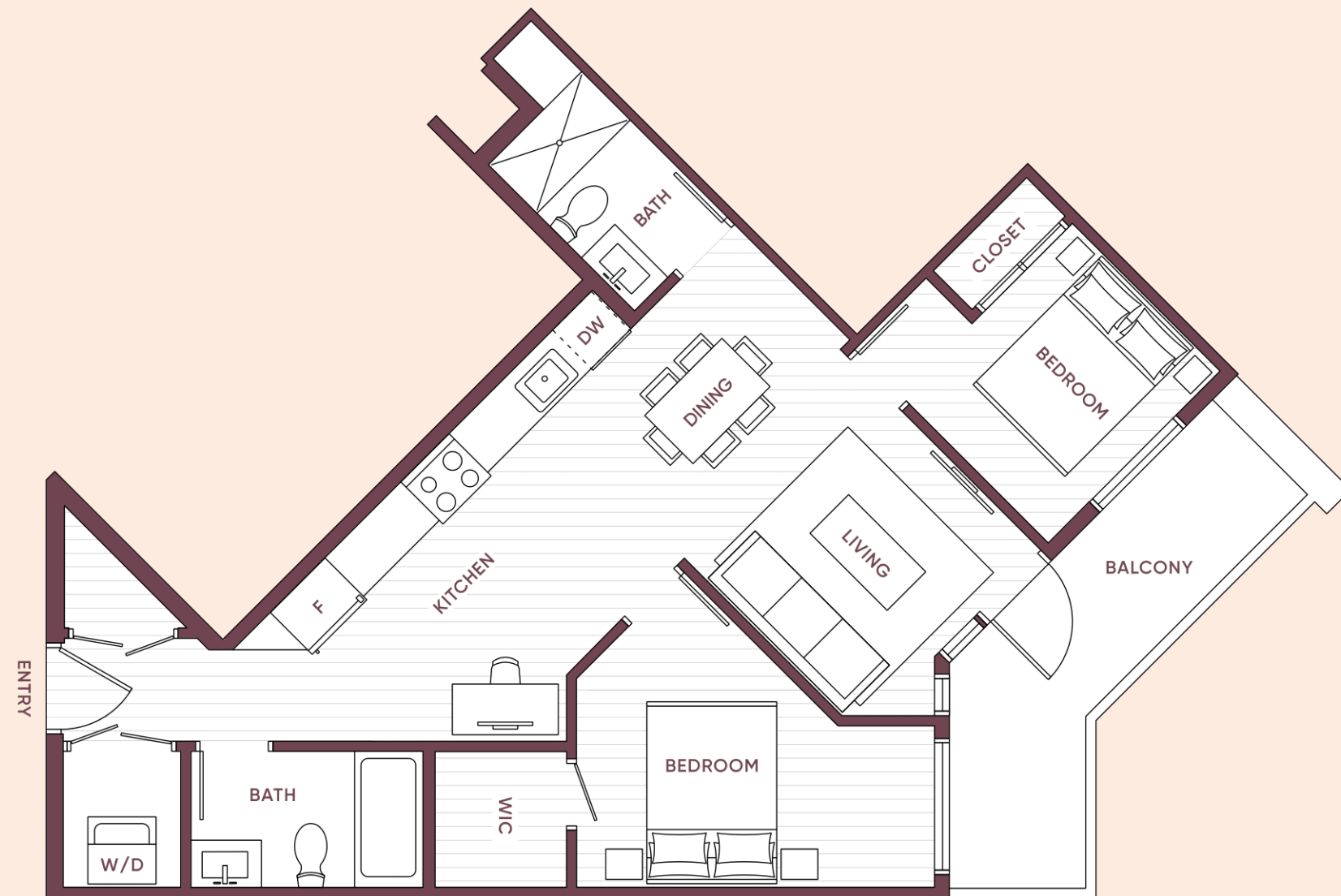
LEVEL 2

# F2A

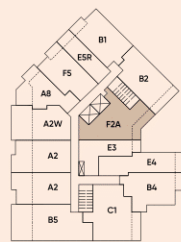
## 2 BED, 2 BATH

INTERIOR: 767 SQ FT | EXTERIOR: 100 SQ FT | TOTAL: 867 SQ FT

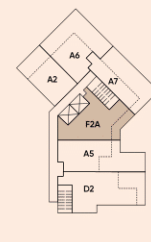
# Stowa



LEVELS 3-4



LEVEL 5



LEVEL 6

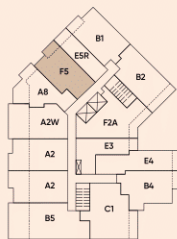


# F5

## JR 2 BED, 1 BATH

INTERIOR: 603 SQ FT | EXTERIOR: 60 SQ FT | TOTAL: 663 SQ FT

# Stowa



LEVEL 5