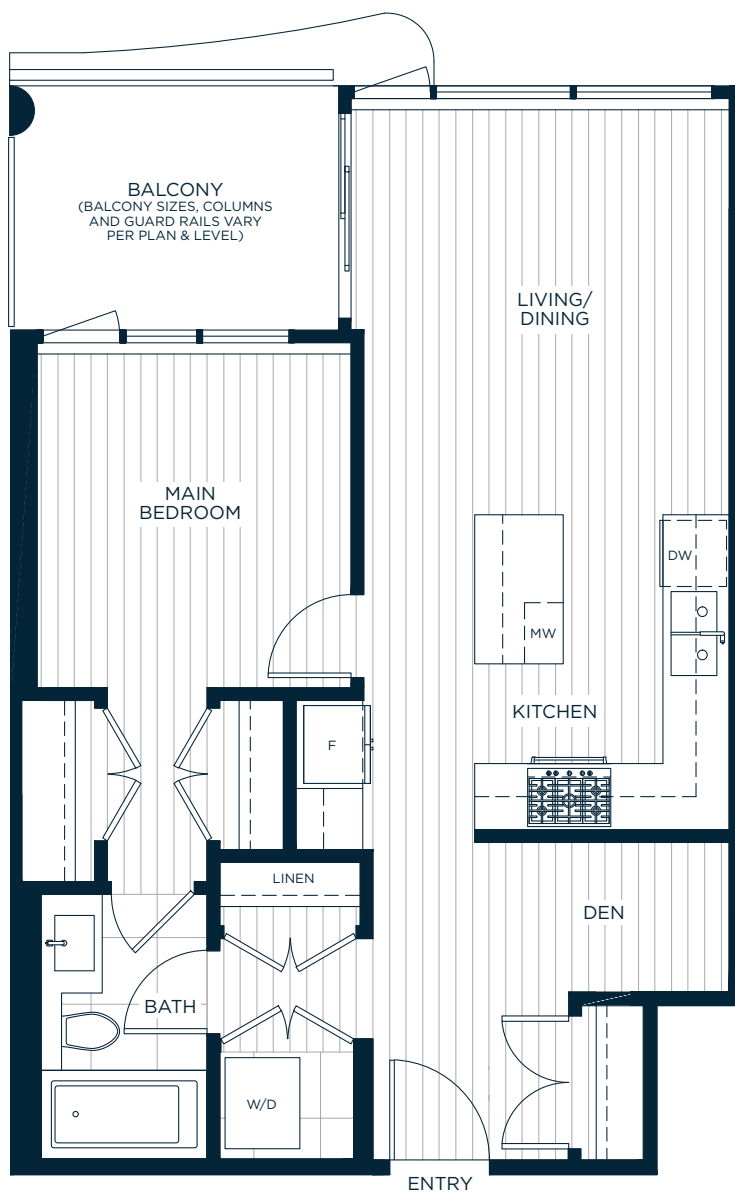


A

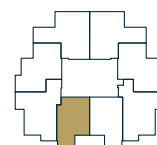
ONE BEDROOM & DEN
ONE BATH

Riviera.
ON THE PARK, METROTOWN.

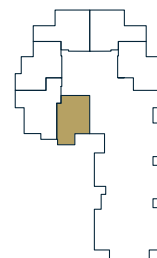
INDOOR LIVING: APPROX. 646-650 SQ. FT.
OUTDOOR LIVING: APPROX. 75 SQ. FT.
TOTAL: APPROX. 721-725 SQ. FT.



LEVELS 9-34



LEVELS 3-6

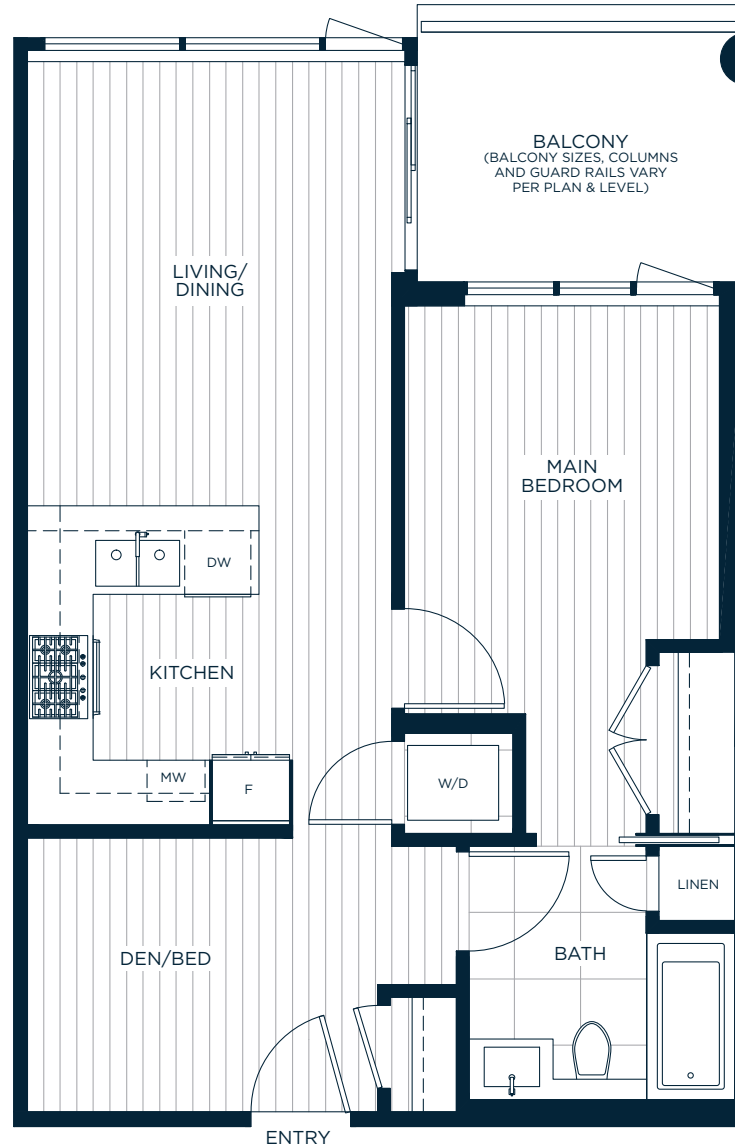


A1

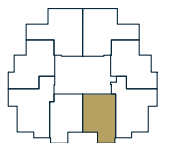
ADAPTABLE
ONE BEDROOM & DEN
ONE BATH

Riviera.
ON THE PARK, METROTOWN.

INDOOR LIVING: APPROX. 660 SQ. FT.
OUTDOOR LIVING: APPROX. 75 SQ. FT.
TOTAL: APPROX. 735 SQ. FT.



LEVELS 9-34



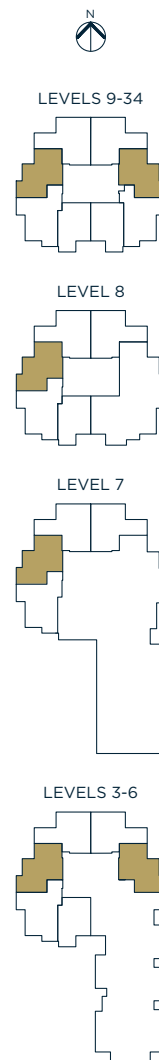
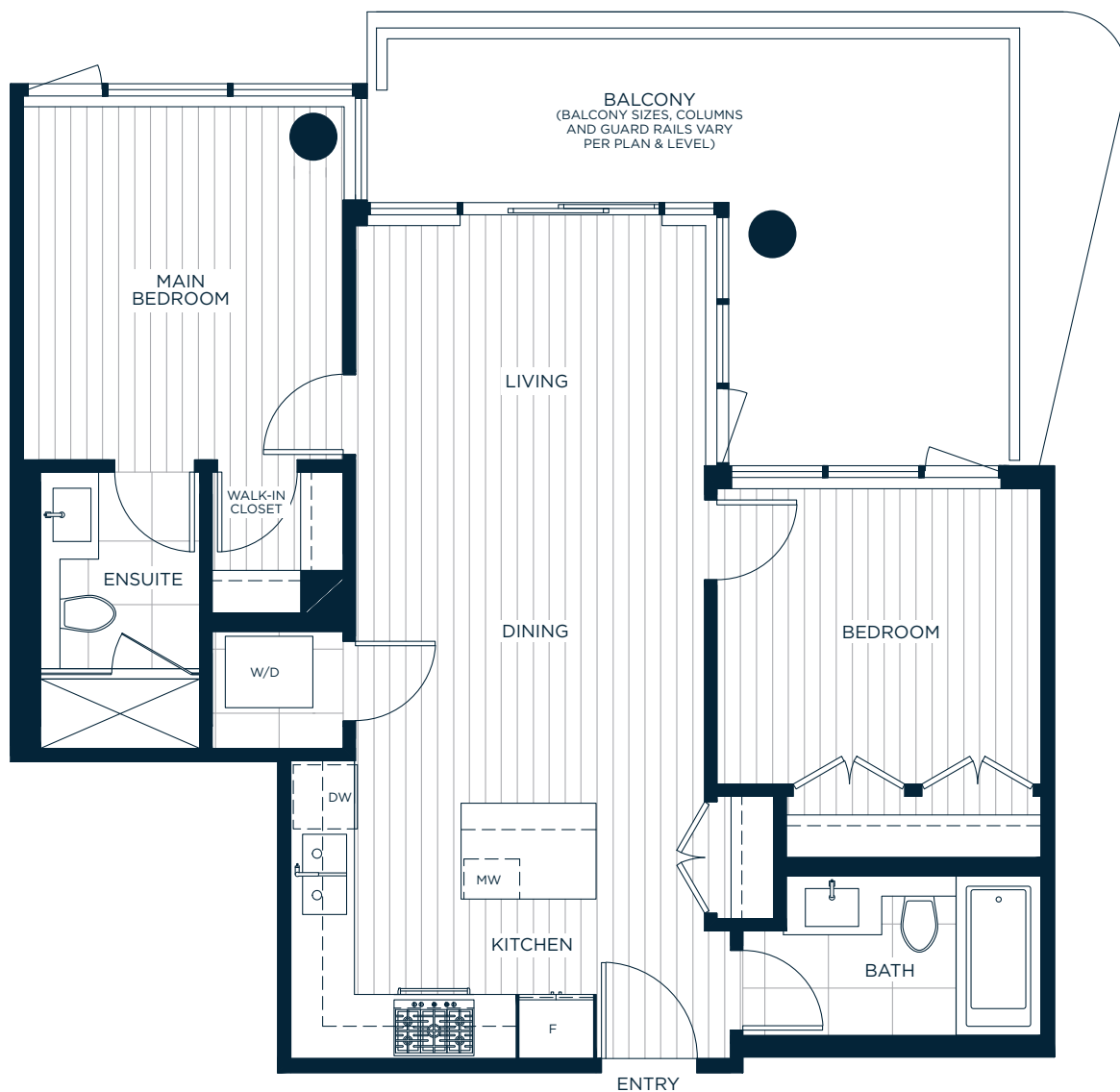
In a continuing effort to meet the challenge of product improvements, we reserve the right to modify or change dimensions, sizes, specifications, layouts, plan orientations and materials without notice.
All patio, terrace and balcony sizes may vary. Windows, columns, privacy screens, demising walls, spandrel and guardrail details may vary depending upon the plan and floor level.
The quality homes at Riviera are built by LM Riviera Homes Limited Partnership. E. & O.E.

B

TWO BEDROOM
TWO BATH

Riviera.
ON THE PARK, METROTOWN.

INDOOR LIVING: APPROX. 757 SQ. FT.
OUTDOOR LIVING: APPROX. 180 SQ. FT.
TOTAL: APPROX. 937 SQ. FT.

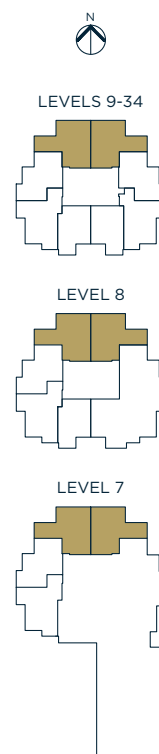
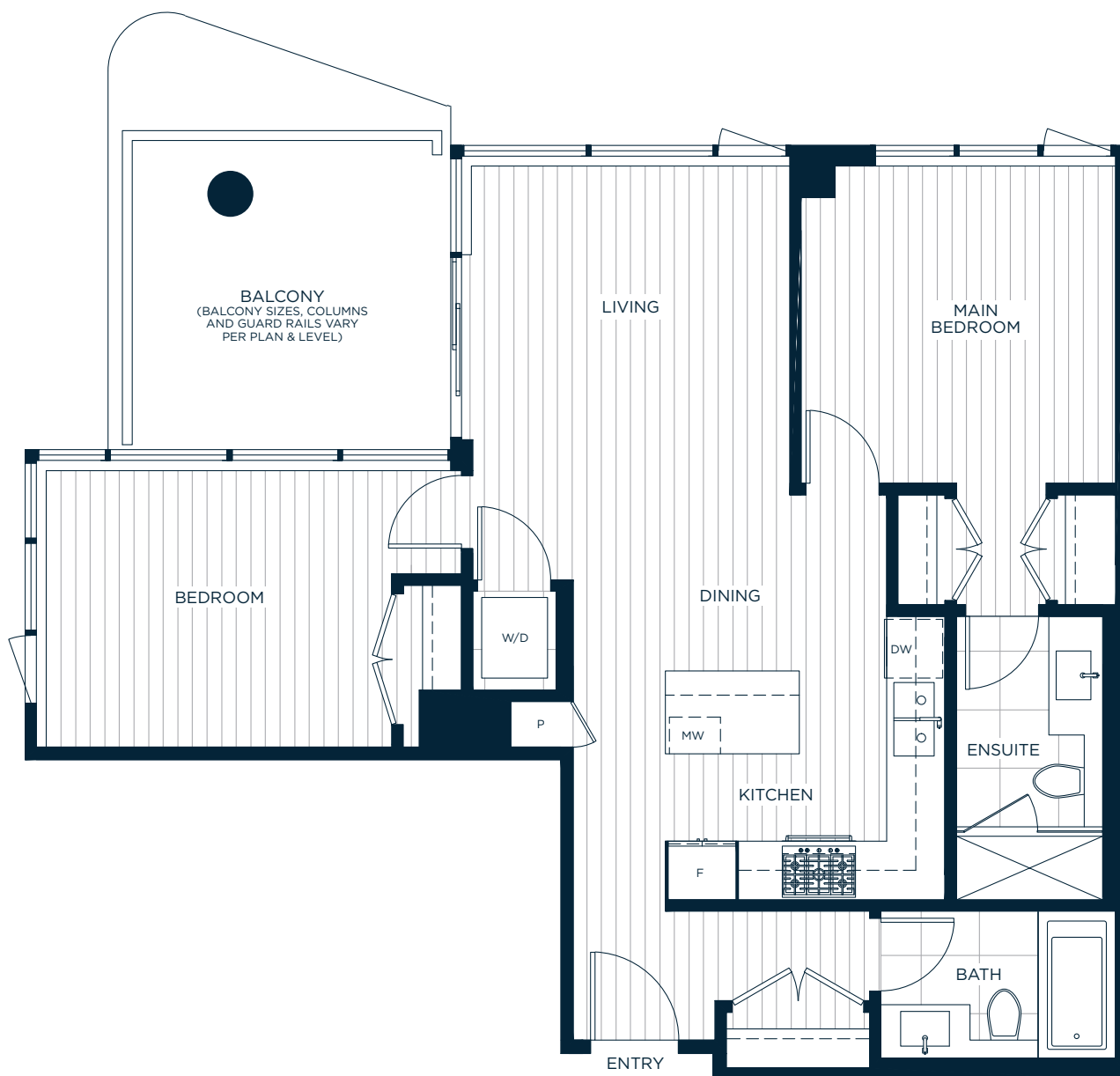


B1

TWO BEDROOM
TWO BATH

Riviera.
ON THE PARK, METROTOWN.

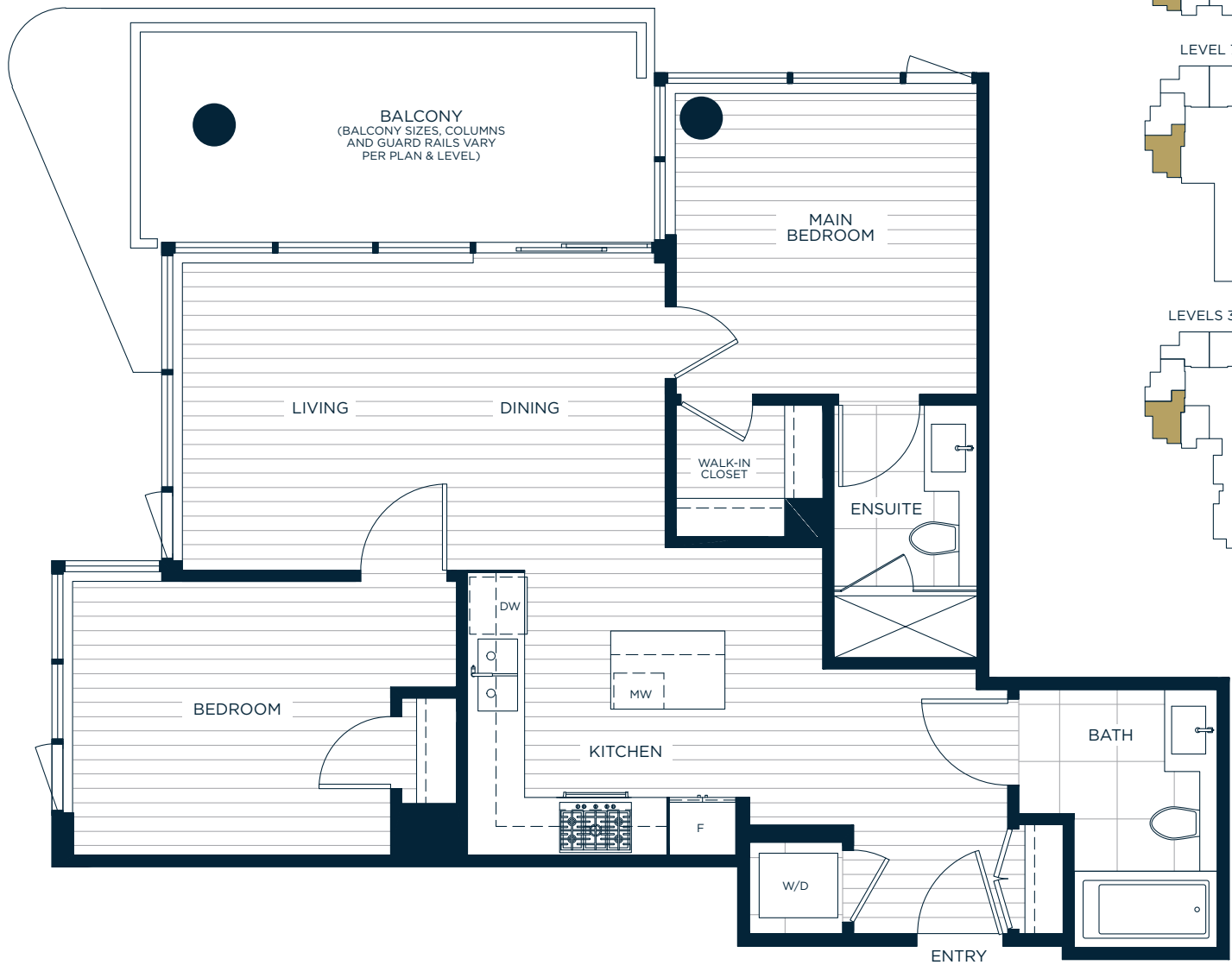
INDOOR LIVING: APPROX. 852-861 SQ. FT.
OUTDOOR LIVING: APPROX. 118 SQ. FT.
TOTAL: APPROX. 970-979 SQ. FT.



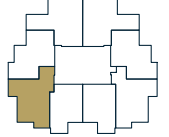


Riviera.
ON THE PARK, METRO TOWN.

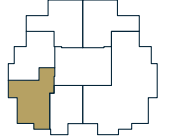
INDOOR LIVING: APPROX. 838-850 SQ. FT.
OUTDOOR LIVING: APPROX. 134 SQ. FT.
TOTAL: APPROX. 972-984 SQ. FT.



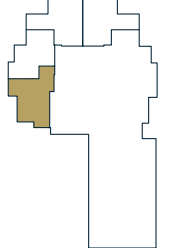
LEVELS 9-34



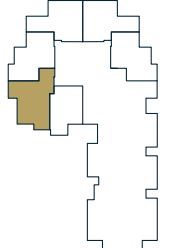
LEVEL 8



LEVEL 7



LEVELS 3-6

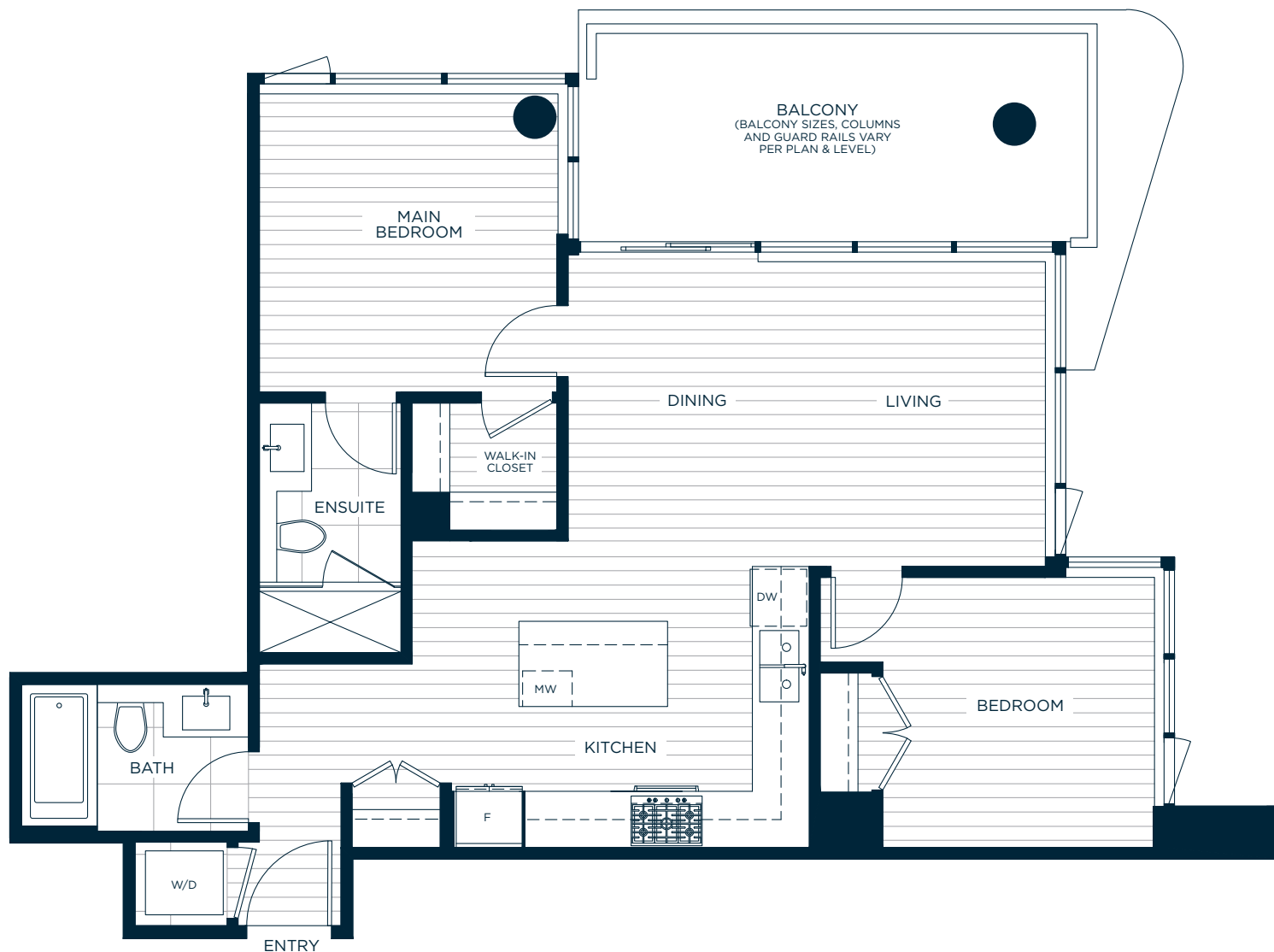


C1

TWO BEDROOM
TWO BATH

Riviera.
ON THE PARK, METROTOWN.

INDOOR LIVING: APPROX. 808 SQ. FT.
OUTDOOR LIVING: APPROX. 134 SQ. FT.
TOTAL: APPROX. 942 SQ. FT.



LEVELS 9-34

