

The background of the image features a series of light blue, wavy lines that flow across the frame, creating a sense of movement and depth. These lines are more pronounced in the lower half and fade into a lighter blue gradient towards the top.

ARTESIA

M E T R O T O W N



WELCOME TO ARTESIA BY QUALEX-LANDMARK™

“The Qualex-Landmark residential portfolio consists of quietly iconic buildings, born out of our highly detailed approach — Artesia at Metrotown will soon join our family of communities. From the fine details that go into each home before it is built to the quality of construction and service in the years to come, we ensure each homeowner is treated with respect at every step.”

*— Cyrus Navabi, Managing Director
Qualex-Landmark™*



A POWERFUL LEGACY, A FRESH PERSPECTIVE

Qualex-Landmark™, recognized as one of British Columbia's most enlightened development groups, has been creating boutique experiences for homeowners for well over 20 years. Among our recent local successes are Green on Queensbury and District Crossing in North Vancouver, Aria in Oakridge, and Legacy in Dunbar.

The over 2500 homes within the 22 outstanding residential communities built to date in Western Canada speak for themselves, from Domus and Pomaria in Yaletown to Mark on Tenth and Park Point in Alberta. Rooted in a timeless tradition of excellence, with eyes on the future, we are deeply committed to creating unique, contemporary homes of enduring, classic quality.



LEGACY | DUNBAR VILLAGE



GREEN ON QUEENSBURY | NORTH VANCOUVER



PARK POINT | CALGARY, ALBERTA



POMARIA | DOWNTOWN VANCOUVER



BEAUTIFULLY BALANCED LIVING

At Artesia, everything flows together — health, wellness, and family life. Every residence is the perfect blend of functionality, comfort and modern aesthetics. The interior design ethos brings elemental tones and organic textures together to create serene, contemporary homes that feel grounded in nature.

Standing on a quiet, tree-lined street, Artesia's endless vistas and refined amenities are just a five-minute walk from the retail energy of Metrotown and the convenience of SkyTrain.



THE GREENER SIDE OF METROTOWN





With three parks as near neighbours and eight within walking distance, Artesia is on the greener side of Metrotown. In the dappled shade of trees, spaces open up for recreation and fitness all year long. Running or cycling, a game of tennis or golf, there's a landscape for every mood.

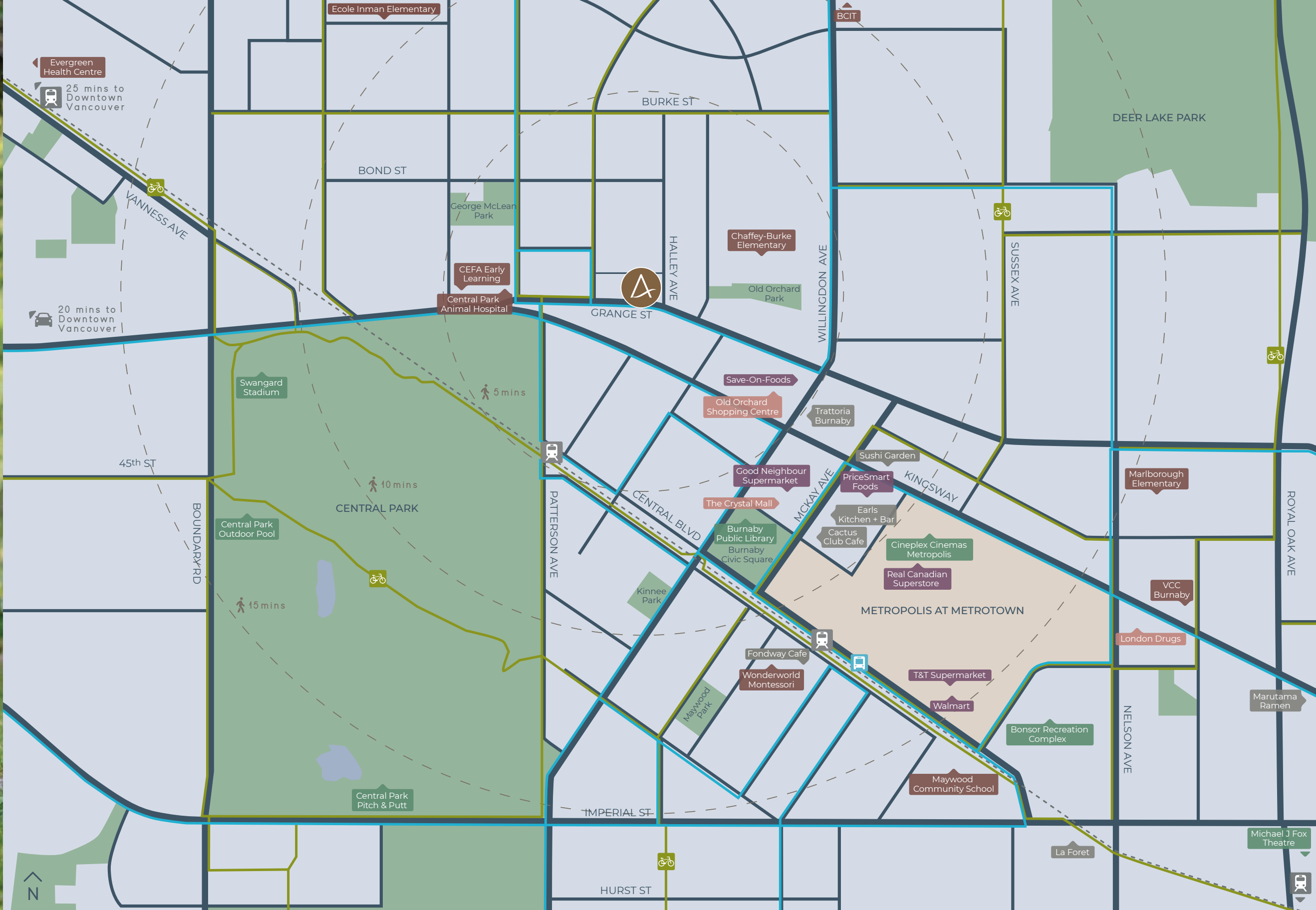


WELL-PLACED FOR WELL-BEING

Explore the neighbourhood's parks and shops on foot, by bike, or take the SkyTrain and get wherever you need to be. Artesia is close to nature and all conveniences to help you make the most of every day.

- RECREATION
- DINING
- SCHOOLS AND MEDICAL
- GROCERS
- SHOPPING

-  WALK TIMES
-  BIKE ROUTE
-  SKYTRAIN
-  BUS ROUTE





A NEW PERSPECTIVE

"Everyone enjoys Metrotown for its shopping, food, and energy. But we saw another side to Metrotown; its quieter, natural side. We knew that homeowners would appreciate convenient city living, and love being in a less crowded community, surrounded by green spaces."

*— Jordan Beach,
Qualex-Landmark™*





ROOTED IN GREENSPACE, STRETCHING SKYWARD

“We designed Artesia to invite the environment into the building as much as possible — in contrast to the conventional view of bustling Metrotown, this building was designed to take advantage of its quieter location.”

— Bob Worden, RWA Group Architecture

Like shimmering raindrops, blue glass panels accent the exterior facade as it rises 31-storeys high, a graceful cascade of glass balconies that highlight expansive views to Downtown Vancouver, the Strait of Georgia, and the North Shore Mountains.

Framed by Artesia’s water feature, the triple-height podium blurs the boundaries between indoors and out with a soaring glass curtain that draws in the beauty of the courtyard’s landscaping and bathes the lobby in natural light.



A WARM WELCOME HOME

Appearing to float on the reflection pool outside, Artesia's three-storey lobby extends a lofty, luminous welcome.

Designed by Vancouver-based BYU, Artesia is inspired by the beauty and textures of nature. From the rammed earth feature wall in the Grand Lobby to the considered finishes throughout, Artesia's interiors ripple like water, glisten like quartz and marble, and are warm like woodgrain.



IN TOUCH WITH NATURE

Your home at Artesia has been designed holistically, the way we all want to live now — a mix of modern technology and elemental necessities, like fresh air and natural light, that foster well-being.

“We were inspired by Qualex-Landmark’s vision for Artesia as a sanctuary of well-being for its homeowners. We have developed a design ethos that brings to mind waves, ripples of sand, and the curves of nature, with calming colours that are grounded in the elements of water and earth.”

— Ada Bonini, BYU Design

WATER AND EARTH

Inspired by organic shades and textures, the residences at Artesia are available in two serene colour palettes: Water and Earth.

Gleaming in a soft tone-on-tone scheme, the Water kitchen offers sleek contemporary cabinets paired with recessed nickel pulls that continue its streamlined aesthetic. Taking a slightly more traditional approach the warm wood tones of the Earth kitchen's darker cabinetry feature reverse raised panels and chic surface mounted nickel hardware.



Integrated Fridge & Dishwasher

Quartz Countertops & Backsplash



Electric Wall Oven

Additional Storage



Garbage & Recycling Centre

EARTH

KITCHEN SOPHISTICATION

Equipped with a full suite of professional cooking appliances by Fisher & Paykel, the kitchens are complemented by a concealed high-performance exhaust fan and a built-in microwave.

Refined Italian cabinetry paired with quartz countertops and backsplashes ensures the kitchens are as beautiful as they are functional. Cleverly positioned cupboards and a hidden 'Le Mans' corner unit with out-swinging shelves maximize storage space. Under-cabinet lighting and an undermount stainless steel sink with a Grohe faucet accentuate the clean contemporary lines.



'Le Mans' Corner Unit

Gas Cooktop



Under-cabinet Lighting & High-Performance Integrated Vent



Warm & Cool LED Vanity Mirror
w/ Beauty Boost Ring Light

Frameless Glass w/ Grohe Rain
Shower Head & Hand Shower

BATHROOM BEAUTY

The ensuite takes pampering to the next level. Every home has a floating vanity and mirror with accent lighting to help you look and feel amazing. The bathroom features glistening ceramic tile, a heated towel bar, a high-end Toto lavatory, and Grohe faucets and fixtures.

SMART LIVING

Homes are finished to the highest standards of craftsmanship with imported Italian cabinetry and quartz countertops. Underfoot, there's luxury laminate in the main rooms and elegant porcelain in the bathroom. Comfort and convenience is the priority with a responsive heating and cooling system and in-suite laundry.



Elegant Roller Blinds

Rendering is artist's interpretation only.

Rendering is artist's interpretation only.



PUBLIC (GLASS) CHANGES THE WAY WE SEE THE STREET

Experimental art studio Random International is bringing colourful motion to Grange Street at Artesia. German duo Hannes Koch and Florian Ortkrass invite residents and visitors to rotate the tall, tinted glass monoliths to alter perceptions of our shared environment.

Public (Glass) is designed to encourage participation and human interaction in the real world, a recurrent theme for Random International. Other kinetic and dramatic experiences like Rain Room, now at the LA County Museum of Art, have won worldwide acclaim.

Random International's work is in the permanent collections of MoMA in New York, the V&A in London, and the YUZ Foundation in Shanghai.



RAIN ROOM - THE BARBICAN



WELCOME TO A WORLD OF WELL-BEING

Designed by award-winning architects RWA, Artesia is inspired by the natural elements of earth and water, a sanctuary of inner calm. Modern and functional, yet ultimately inspired by nature.

LIVING WELL IN EVERY WAY

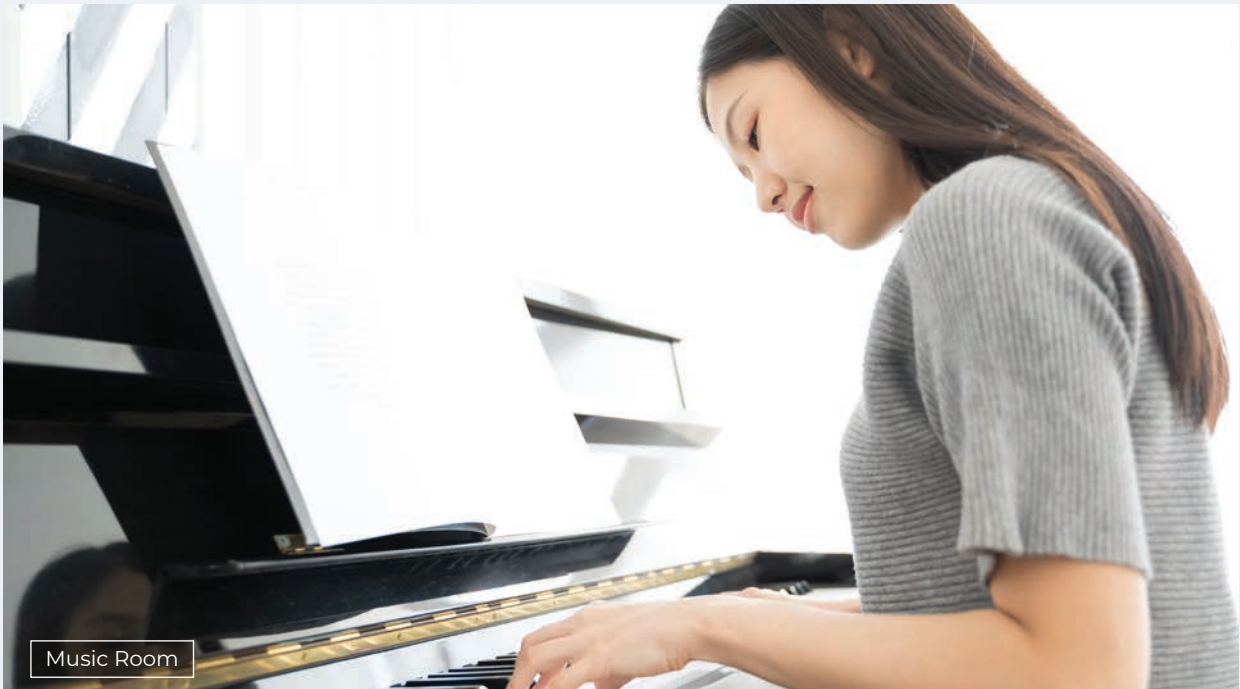
With just 247 homes and nearly 18,000 square feet of amenity programming, Artesia offers one of the highest ratios of amenity-to-residential space in Metrotown, giving residents ample room to stretch body and mind, or just relax and unwind.

ENTERTAINING MADE SIMPLE

Enjoy socializing at Artesia with ping-pong, chess and foosball in the outdoor Games Zone. There's an outdoor lounge with BBQ and fireplace, or entertain indoors where Artesia's Club Room features a gourmet kitchen, dining room and fireside seating. Children have plenty of room for fun in their own designated indoor and outdoor play areas.

WORK FROM HOME IN STYLE

If you need to prep for an exam or work from home, the comfortable workspace in the Business and Study Centre is WiFi-enabled. With its breathtaking backdrop, and star-gazing telescope, the Vista Lounge is the perfect place for quiet contemplation.



Rendering is artist's interpretation only.





A LUSH COURTYARD RETREAT

"Artesia's exterior amenity spaces are nestled within a nature-inspired setting. Our approach was to seamlessly integrate the green backdrop of the surrounding neighbourhood."

— Sheena Soon, PFS Studio

At ground level, Artesia interacts with the surrounding greenspace, rising from its soothing water feature, in constant connection with the natural world.

The grand courtyard offers abundant greenery and outdoor leisure. From the Hot Tub, to the children's Playground, BBQ, lounge and games areas — Artesia provides all-season 'rest and recreation'.



WELLNESS FIRST AND FOREMOST

Achieve your fitness goals in our dedicated Gym and Yoga Space, or unwind in the infrared Sauna and Hot Tub just steps away. Explore the outdoors with Artesia's complementary bikes. When you want to broaden the mind, you'll find peace and quiet in our Music and Reading Rooms.





HOME COMFORTS

Artesia has thought of all the little things that help streamline your life. Secure underground parking with touch-free entry points and keyless access throughout the building means no fumbling for keys. When hosting family and friends, Artesia has a Guest Suite that they won't want to leave. There's even a handy parcel delivery storage system for your online shopping, and convenient car, bike, and pet wash stations.

You can rest assured that Artesia has been built with your future in mind. There's a 1-2-5-10 year warranty for all the peace of mind you deserve. What's more, there's a priority on providing a healthier environment, with sanitization and water filtration stations, enhanced air quality thanks to in-suite recovery ventilation units, and a state-of-the-art professionally managed mechanical system.



Touchless Building Access Points

EV Charging Stations and Car Sharing



Bike Storage and Repair Station



BUILDING WITH COMMUNITY IN MIND

Qualex-Landmark recognizes the housing needs of the wider community. We are planning a partnership with the YWCA to develop a sister, five-storey, 32-home building designed to house single mothers and their children.



OUR AWARD-WINNING PARTNERS

RWA GROUP ARCHITECTS

rwa.ca

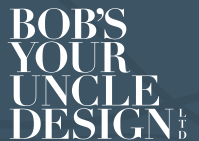
RWA Architects was established by Bob Worden and Doug Ramsay in 1989, practicing architecture and urban planning with care and imagination, incorporating new and traditional technologies. The firm has developed a reputation for innovative design focused on producing livable buildings with a human scale that respect the patterns and character of the community.



BYU DESIGN

byudesign.com

BYU Design (or Bob's Your Uncle Design) is led by principals Ada Bonini and Cheryl Broadhead. Together, they develop interiors organically driven by a vision of what the homeowner's experience will be. BYU's enlightened process has brought them countless clients in Vancouver and beyond who value their refined creativity and attention to detail.



PFS STUDIO

pfsstudio.com

A leading Canadian planning, urban design and landscape architecture firm PFS specializes in creating outdoor spaces that are distinctively Pacific in look and feel. Their projects include: the Coal Harbour Seawall, Toronto East Bayfront, Burnaby City Hall, and Canadian Veterans' Memorial to name just a few.



AXIOM BUILDERS

axiombuilders.ca

Axiom Builders builds legacy projects across Western Canada. Collaborating with the most adventurous developers on the most impressive structures, Axiom has left its mark on Greater Vancouver. Part of the Bosa family, their commitment to quality and craftsmanship speaks for itself in the shape of the city's skyline and streetscape.





The foregoing materials are not intended as an offering for sale. Any offering for sale can only be made pursuant to the terms of a Disclosure Statement filed in accordance with the Real Estate Development Marketing Act. TM denotes one or more trademarks of Qualex-Landmark Living Inc. used under license by Qualex-Landmark Orchard Limited Partnership.

QUALEX.CA/ARTESIA