



LAUREL

on mill lake

PREVIEW EDITION



The Dawn of a New Season at Mill Lake



This scenic pocket of Abbotsford has seen an incredible evolution over the past 100 years. Not only was it a major contributor to the area's early economic growth, the lakeside has, most recently, cultivated a sense of community with its abundance of parkland. We found ourselves drawn to that richness and wanted to be part of the lake's continuing evolution.

Laurel on Mill Lake seeks harmony between modern architecture, verdant landscaping, and natural serenity. A masterpiece has surfaced.

ANDREW HEINRICHS
Heinrichs Developments

Your Home by the Lake

A timeless collection of 42 townhomes and apartments sits on the historic shores of Mill Lake. Surrounded by the greens and blues of nature, these homes are a breath of fresh air — and still close to Abbotsford's community essentials. Embrace life in a home designed for expansive living.

LAUREL
on mill lake





Life Feels Serene



A one-of-a-kind living experience takes shape, with nature as a beautiful backdrop. Continue your legacy in an elegant community you are proud to call home.



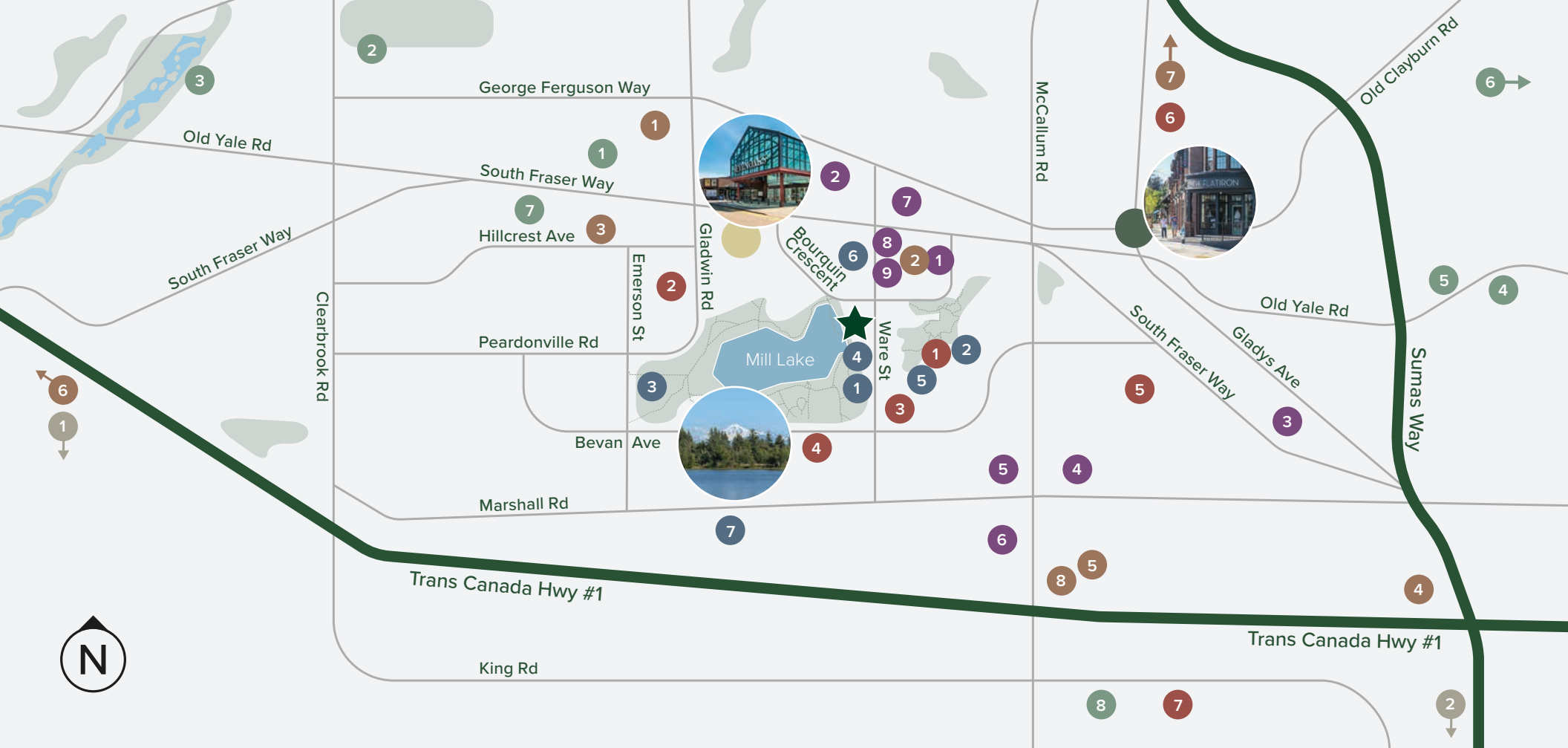


A Refreshing Lake Lifestyle

The tranquility of nature plays a meaningful part in your everyday. Take a short wander to sit peacefully by the lake's edge, walk the Mill Lake loop, or enjoy a picnic in the park with friends and family. The park circling the lake also features playgrounds, splash parks, lawn bowling, a launch for non-motorized boats, and more.

Step away from this nature and you'll encounter a community of restaurants and shops within walking distance of home.





Community Spirit

Surrounded by the best qualities of a vibrant valley community, life in this part of Abbotsford opens the door to possibility. Easily pick up groceries, browse through the many shops at Sevenoaks Shopping Centre, or experience the historic charm of downtown Abbotsford. Amenities that support families, such as recreation centres and schools, are close by. To explore even more, quickly access the highway, airport, or US border.

SEVENOAKS SHOPPING CENTRE

- Best Buy
- Sport Chek
- Coles
- Saje Natural Wellness
- Hudson's Bay
- Michaels
- Bed Bath & Beyond
- London Drugs
- Save-On-Foods

DOWNTOWN ABBOTSFORD

- Tracycakes Bakery Cafe
- Spruce Collective
- The Polly Fox
- Bow & Stern
- Townhall
- Abbotsford Farm & Country Market
- Banter Ice Cream
- Jubilee Park
- The Pastry Portal

SHOPPING & GROCERY

- 1 Real Canadian Superstore
- 2 Pharmasave South Fraser Way
- 3 Save-On-Foods
- 4 Walmart Supercentre
- 5 Cabela's Abbotsford
- 6 Highstreet Shopping Centre
- 7 Lepp Farm Market
- 8 McCallum Junction

RESTAURANTS & EATERIES

- 1 Nikko Sushi
- 2 Red Robin Gourmet Burgers & Brews
- 3 The Keg Steakhouse + Bar
- 4 Little Japan Restaurant
- 5 Restaurant 62
- 6 Good Kid Coffee
- 7 White Spot Abbotsford
- 8 Greek Islands Restaurant
- 9 Bavaria Restaurant

COMMUNITY SERVICES

- 1 Trethewey House Heritage Site
- 2 Abbotsford Arts Centre
- 3 Centennial Outdoor Pool
- 4 Abbotsford Arts Council
- 5 Abbotsford Community Library
- 6 Fraser Valley Animal Hospital
- 7 Abbotsford Regional Hospital & Cancer Centre

SPORTS & LEISURE

- 1 Club16 Trevor Linden Fitness Abbotsford
- 2 Matsqui Recreation Centre
- 3 Discovery Trail
- 4 Abbotsford Recreation Centre
- 5 Great West Fitness & Tennis
- 6 Ledgeview Golf Club
- 7 GoodLife Fitness Abbotsford South Fraser
- 8 Abbotsford Centre

SCHOOLS

- 1 Abbotsford Senior Secondary School
- 2 Centennial Park Elementary School
- 3 Abbotsford Middle School
- 4 Godson Elementary School
- 5 Alexander Elementary School
- 6 Little Wonders Montessori Childcare & Preschool
- 7 University of the Fraser Valley

TRANSPORTATION

- 1 Abbotsford International Airport
- 2 US Border (Sumas Huntington Crossing)

★ LAUREL ON MILL LAKE

A REFLECTION OF ELEGANT LAKESIDE LIVING



A Sophisticated Form

DESIGNED BY DAVID TYRELL ARCHITECTURE



Laurel on Mill Lake is inspired by its natural surroundings and industrial history. Contemporary lines and concrete are softened by wood and earthy tones, and rows of glass balconies resemble the shimmering surface of water. The result is a timeless and stunning work of architecture.

Revived by Nature

Fresh air is celebrated here, with an outdoor amenity space available for residents to enjoy year-round. A beautifully landscaped backyard stretches to the water's edge, enhancing the natural scenery framed by your window. Cherish time with friends and family on the 17,000-square-foot, second-level patio, where you can gather around a fire pit, dine al fresco, or lounge while taking in the view.

Mill Lake

MILL LAKE LOOP

LAUREL
on mill lake

PLAXTON CRESCENT

MILL LAKE PARK





Every Day Feels Perfect

Live in a home designed to elevate life. These large layouts make the best use of space, and are big enough for family moments and year-round entertaining.

1. Ensuite with shower and stand-alone bathtub
2. Double sinks and space for everyone
3. Large bedroom fits king-sized bed
4. Primary bedroom opens to large patio
5. Full bathroom on main floor
6. Customize your home with built-in storage options
7. Full-sized appliances
8. Space for a dining room table big enough for the whole family
9. Extend dining to the outdoors on your patio

A Refined Backdrop

Elegant finishes throughout place you amongst comfort and luxury, and a collection of optional features will heighten your living experience even more. You're going to love life here.





Kitchen Statement

IN DARK COLOUR SCHEME

Shape your dream kitchen by selecting from two colour schemes and three appliance packages. Whichever you choose, these modern spaces feature plenty of storage options and quality materials.



Enormous bedrooms are more elevated than what you would typically expect in an Abbotsford home. There's room for a king-size bed plus additional furniture, large walk-in closets feature innovative systems to help you organize your wardrobe, and optional built-in millwork is a functional customization.

Immersive
Luxury

Inner Sanctuary

Ensuites are an invitation to completely unwind. Double or separate vanities ensure there's enough space for two. Expansive stand-up showers feature both rain and hand fixtures, and a freestanding tub is the ultimate luxury.





A Meaningful Past on the Lake



Mill Lake is a significant character in Abbotsford's rich history, contributing to the region's health, growth, and economy for over a century. A sawmill was first established on the lakeshore in the 1800s and remained until 1934. Shortly after, the area was completely revitalized with sand and grass to become scenic Mill Lake Park. And now, Laurel on Mill Lake will introduce sophisticated modern living to the shoreline.



THE COURT ABBOTSFORD



MILL DISTRICT ABBOTSFORD



MILL DISTRICT ABBOTSFORD



HEINRICHS
DEVELOPMENTS

HeinrichsDevelopments.com

A Developer With Heart and History

Heinrichs Developments is proud to be a local Fraser Valley builder and developer, creating homes of exceptional standard that last the test of time. We use quality materials, partner with highly skilled trades, and believe in building for generations. Living spaces are meticulously thought-out, designed with care, and always include sustainable energy efficiencies.

Our decades of experience, professionalism, and ability to solve construction challenges continue to drive customer satisfaction. From start to finish, we are conscientious, flexible, and responsive, standing behind every project we build.

Features & Finishes

SERENE LAKEFRONT LIVING IN ABBOTSFORD

- 42 contemporary townhomes and apartments located on the shores of historic Mill Lake in Abbotsford
- Select from a variety of large two, two plus den, and three bedroom homes perfect for lifestyles of all kinds
- With home on the water's edge, explore the picturesque lakefront, a neighbouring park, and lake trails only steps away from your front door
- Surrounding community amenities include restaurants, grocery stores, Sevenoaks Shopping Centre, golf courses, and more

A TIMELESS WELCOME

- West Coast-inspired architecture by David Tyrell Architecture respectfully enhances and complements its natural setting
- Lush landscaping between the building and lake, with local plantings and an iconic monkey tree
- Private pathway connects the Laurel community to lake boardwalk in mere steps
- Modern industrial aesthetic throughout common areas, with metal finishes, concrete walls, and wood-panel accents

AMENITIES INVITE CONNECTION

- Enjoy over 1,645 square feet across a green patio with an outdoor fireplace where you can gather with friends, neighbours and family
- Raised garden beds, tools, and benches create a peaceful atmosphere for gardening
- In-building car wash

SPACIOUS AND CONTEMPORARY

- Large homes with efficient layouts offer plenty of space for a variety of furniture, such as your hutch and family-sized sectional
- Timeless interiors with two beautiful colour schemes, Light and Dark, designed by i3 Design
- Luxury vinyl plank flooring flows throughout, with option to upgrade to engineered hardwood
- An abundance of closets for easy organization, plus additional millwork pieces available to customize your home
- Roller shades throughout with blackout roller shades on bedroom windows
- Screens on all windows and sliding doors
- Samsung steam-wash, super-speed washer and multi-steam dryer

- Convenient laundry closet features laminate countertop atop side-by-side washer and dryer (select homes)
- Air conditioning for a perfect climate in warmer months, with option to add more vents throughout your home
- Surface-mount LED lighting throughout
- Wide balconies, decks, or terraces with views of Mill Lake or Mt. Baker for idyllic outdoor lounging, dining, and hosting

PEACE OF MIND

- Private storage lockers available
- All homes receive one parking stall with additional available for purchase
- EV-wired stalls for all parking
- Enhanced security features
- Well-lit parking garage
- Secured fob access per floor
- Exclusive Telus package for internet and tv (ask our team for details)



Features & Finishes

INSPIRED KITCHENS

- Soft-close cabinetry in frosty white with matte-black pulls
- Dark scheme features flat-panel lower cabinetry in contrasting colour
- Durable quartz countertops smoothly transition to corresponding backsplash
- Versatile island with vertical wood-slat panel detailing in white or walnut
- Open shelving and a pantry for more storage and display options
- Stainless sink with matte-black, pull-down Moen faucet
- Undercabinet lighting for precise illumination
- Select from three carefully curated appliance packages:
- Included Appliances:
 - Bosch 36" stainless steel French door refrigerator
 - Bosch 30" wall oven
 - Bosch 30" gas cooktop
 - Bosch 24" stainless steel dishwasher
 - Bosch 30" slide-out hood fan
 - Bosch 24" microwave drawer

CUSTOMIZABLE OPTION 1:

- Thermador 36" stainless steel French door Masterpiece refrigerator
- Thermador 30" Masterpiece wall oven
- Thermador 30" gas cooktop
- Thermador 24" stainless steel Masterpiece dishwasher
- Bosch 30" slide-out hood fan
- Thermador 24" microwave drawer

CUSTOMIZABLE OPTION 2:

- Gaggenau 36" stainless steel French door refrigerator
- Gaggenau 30" wall oven
- Gaggenau 30" gas cooktop
- Gaggenau 24" stainless steel dishwasher
- Bosch 30" slide-out hood fan
- Gaggenau 24" microwave drawer

ELEVATED BATHROOMS

- Vanities feature quartz countertops, flat-panel cabinetry, and linear light bar
- Medicine cabinet for additional storage in ensuite
- Undermount rectangle sink with single-lever, matte-black Moen faucet
- Double sinks in ensuite (select homes)
- Glass stand-up shower with matte-black frame, matte-black Moen showerhead and hand shower, and herringbone-patterned accent wall tiles in ensuite
- Freestanding deep soaker tub with wall-mounted matte-black Moen tub filler in ensuite (select homes)
- Deep soaker tub with curved shower rod and vertical accent wall tiles in main bathrooms
- Shower niche to keep toiletries at hand
- Duval elongated, dual-flush, one-piece toilet
- Large-format floor tiles with elegant finish
- Bathroom hardware in matte black

CUSTOMIZE YOUR HOME

- Sophisticated wall-hung fireplace with millwork surround
- Built-in millwork surround for TV
- Premium engineered hardwood flooring
- Contemporary linear chandelier in dining area
- Medicine cabinet and open shelving in main bathrooms
- Additional air conditioning
- Quartz countertop, upper cabinets, and stainless steel sink with chrome pull-down Moen faucet in laundry closet (select homes)

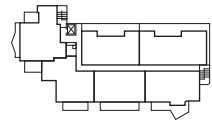


Plan TH1

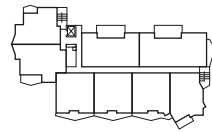
TOWNHOME
LAKESIDE
COLLECTION

2 Bedroom + Den
3 Bath

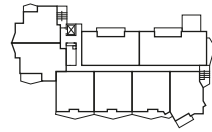
1,895 INT. SF
496 EXT. SF



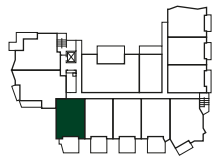
LEVEL 6



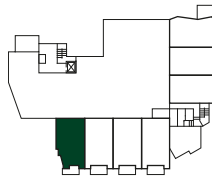
LEVEL 4 & 5



LEVEL 3



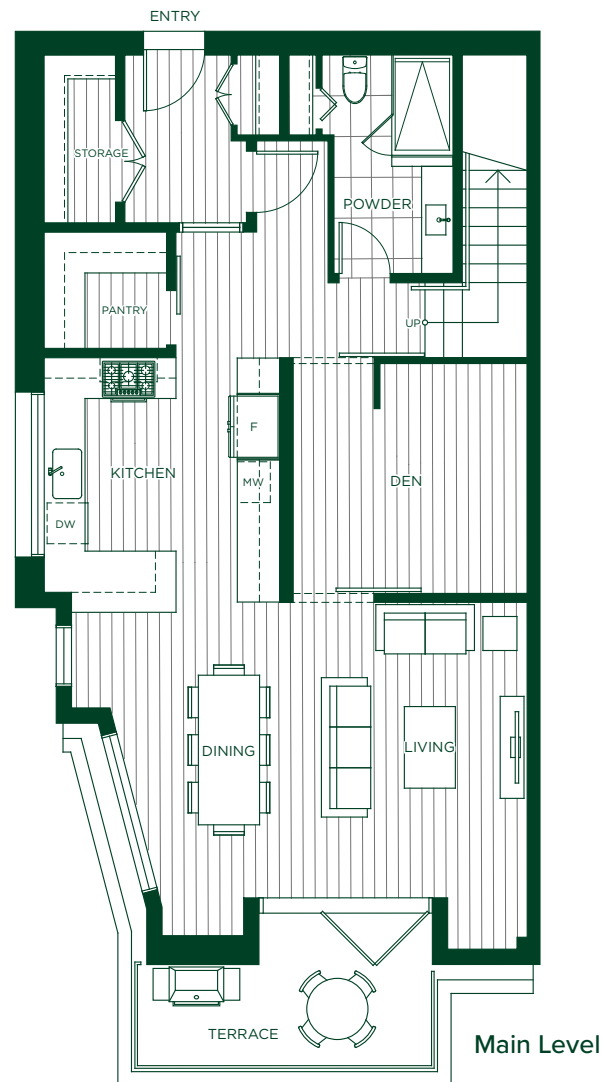
LEVEL 2



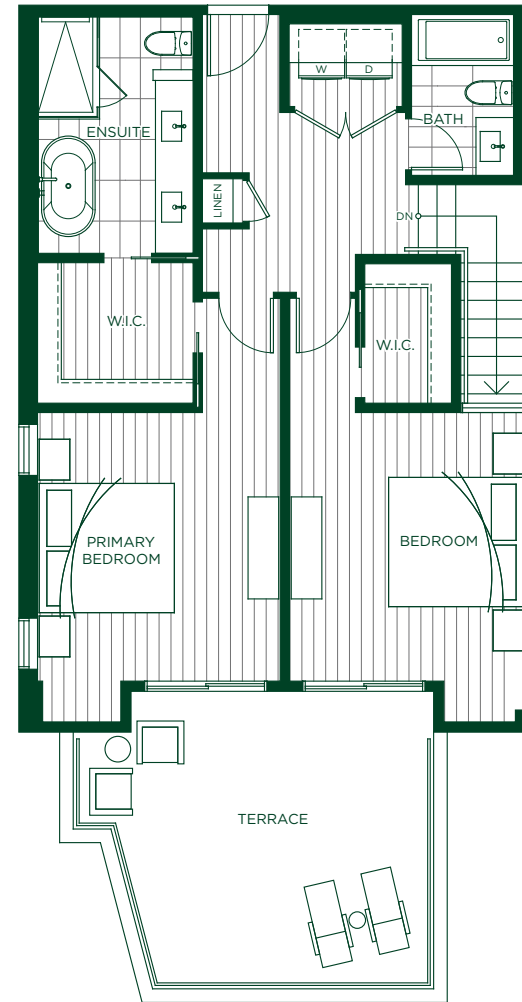
LEVEL 1



LAUREL
on mill lake



Main Level



Upper Level

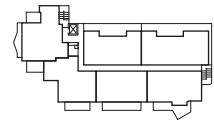
The developer reserves the right to make changes, modifications or substitutes to the building design, specifications and floorplans should they be necessary. Renderings, views, and layouts are for illustration purposes only. Sales powered by MLA Canada Realty. E.&O.E. Stonewater Ventures (No. 33160) Ltd. 2022.

Plan TH2

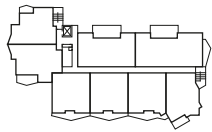
TOWNHOME
LAKESIDE
COLLECTION

2 Bedroom + Den
3 Bath

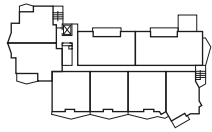
1,981 – 2,002 INT. SF
570 – 587 EXT. SF



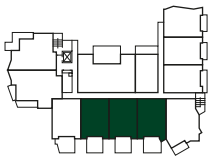
LEVEL 6



LEVEL 4 & 5



LEVEL 3



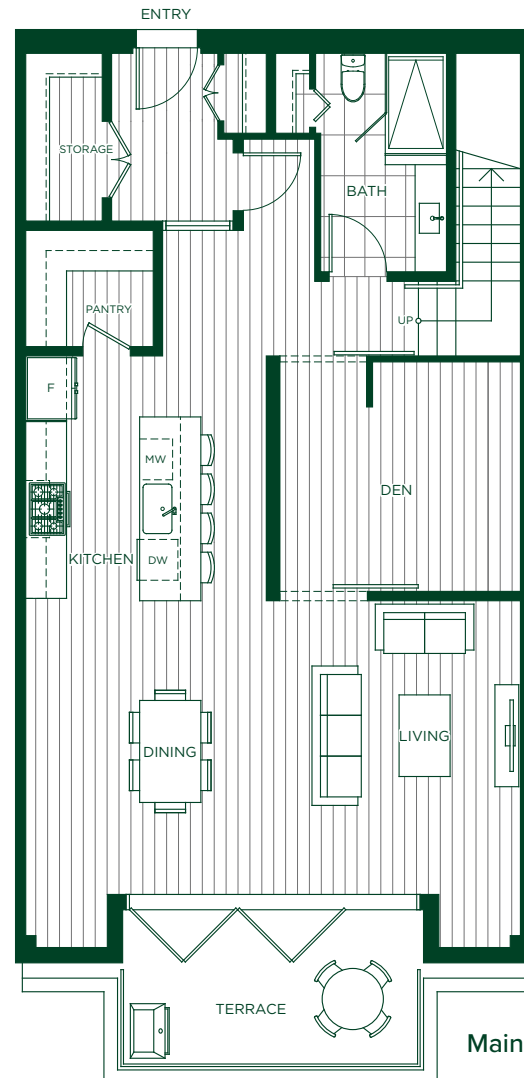
LEVEL 2



LEVEL 1

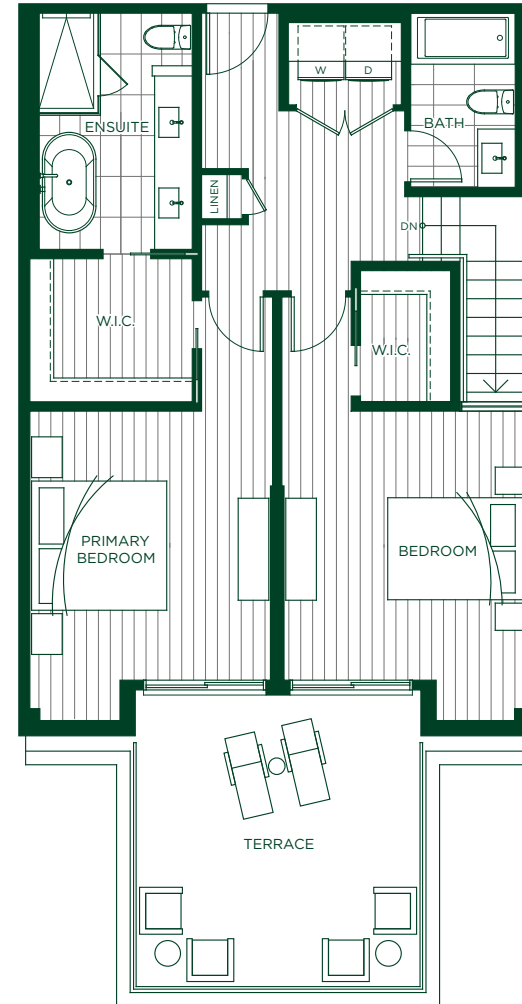


LAUREL
on mill lake



Main Level

*BALCONIES VARY DEPENDING LOCATION IN BUILDING



Upper Level

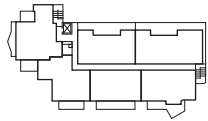
The developer reserves the right to make changes, modifications or substitutes to the building design, specifications and floorplans should they be necessary. Renderings, views, and layouts are for illustration purposes only. Sales powered by MLA Canada Realty. E.&O.E. Stonewater Ventures (No. 33160) Ltd. 2022.

Plan TH3

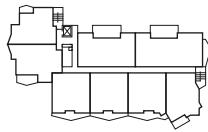
TOWNHOME
LAKESIDE
COLLECTION

2 Bedroom + Den
2.5 Bath

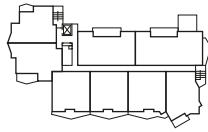
1,755 INT. SF
426 EXT. SF



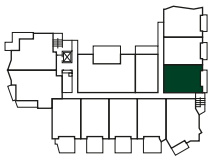
LEVEL 6



LEVEL 4 & 5



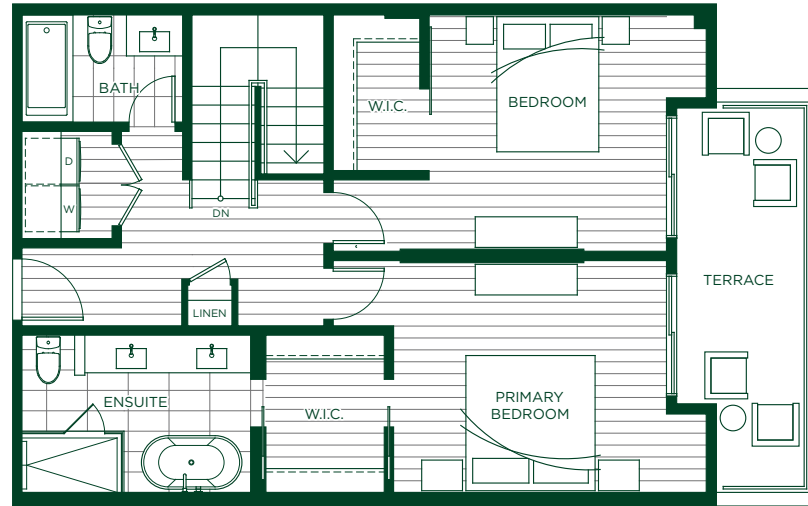
LEVEL 3



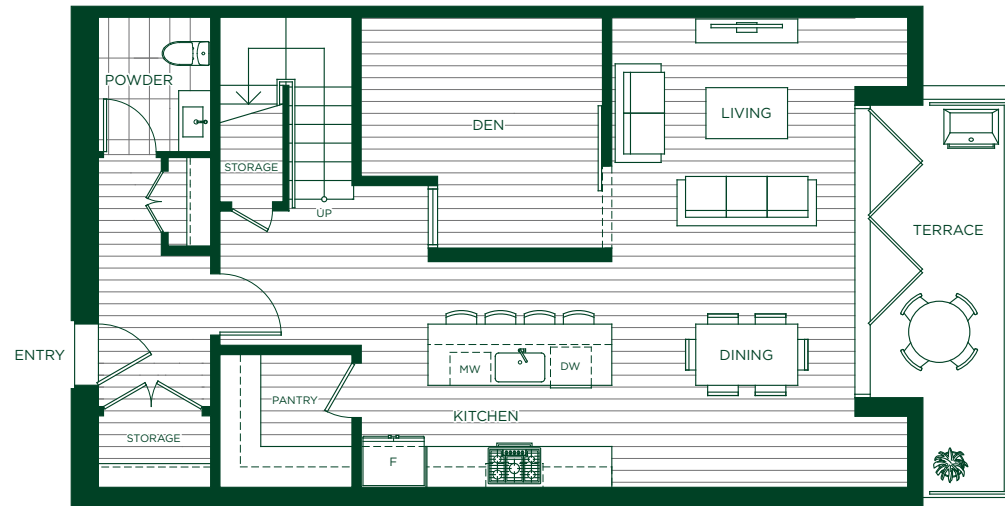
LEVEL 2



LEVEL 1



Upper Level



Main Level

LAUREL
on mill lake

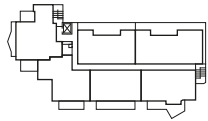
The developer reserves the right to make changes, modifications or substitutes to the building design, specifications and floorplans should they be necessary. Renderings, views, and layouts are for illustration purposes only. Sales powered by MLA Canada Realty. E.&O.E. Stonewater Ventures (No. 33160) Ltd. 2022.

Plan TH4

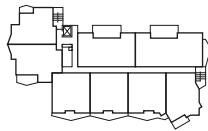
TOWNHOME
LAKESIDE
COLLECTION

2 Bedroom + Den
2.5 Bath

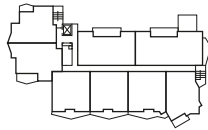
1,776 INT. SF
398 EXT. SF



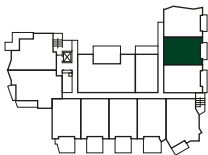
LEVEL 6



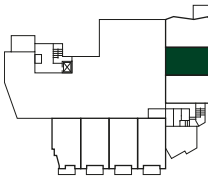
LEVEL 4 & 5



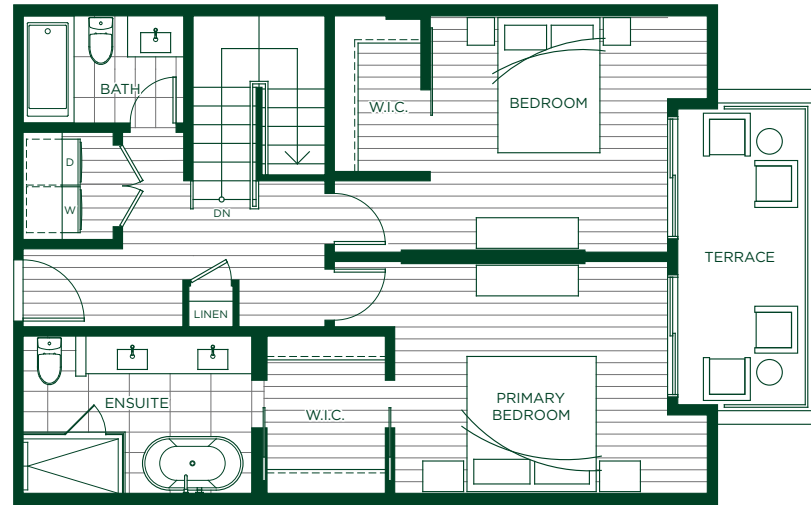
LEVEL 3



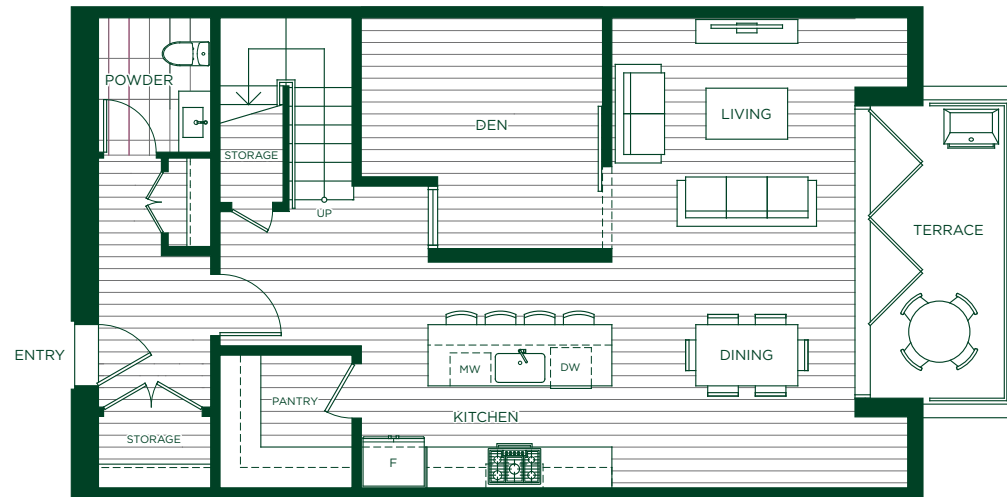
LEVEL 2



LEVEL 1



Upper Level



Main Level

LAUREL
on mill lake

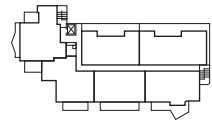
The developer reserves the right to make changes, modifications or substitutes to the building design, specifications and floorplans should they be necessary. Renderings, views, and layouts are for illustration purposes only. Sales powered by MLA Canada Realty. E.&O.E. Stonewater Ventures (No. 33160) Ltd. 2022.

Plan TH5

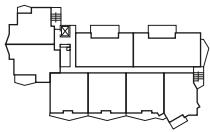
TOWNHOME
LAKESIDE
COLLECTION

2 Bedroom + Den
2.5 Bath

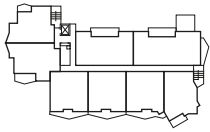
1,819 INT. SF
614 EXT. SF



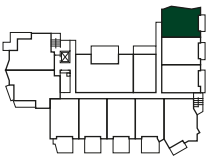
LEVEL 6



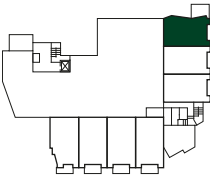
LEVEL 4 & 5



LEVEL 3



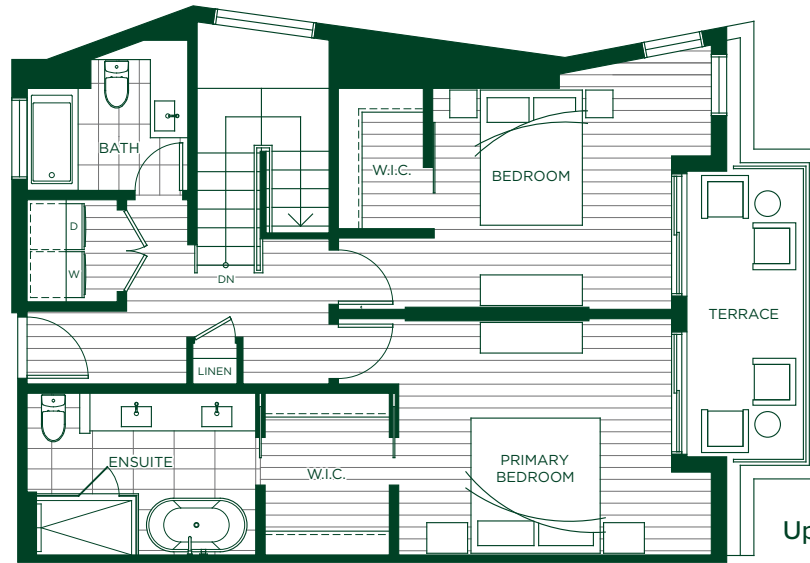
LEVEL 2



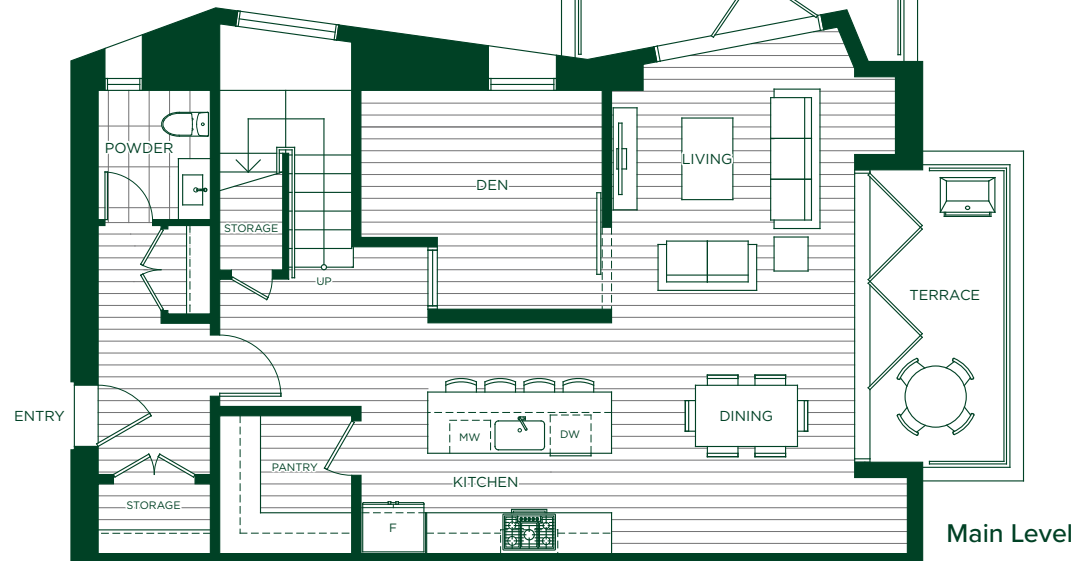
LEVEL 1



LAUREL
on mill lake



Upper Level



Main Level

The developer reserves the right to make changes, modifications or substitutes to the building design, specifications and floorplans should they be necessary. Renderings, views, and layouts are for illustration purposes only. Sales powered by MLA Canada Realty. E.&O.E. Stonewater Ventures (No. 33160) Ltd. 2022.

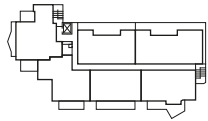
Plan A

LEVEL 2

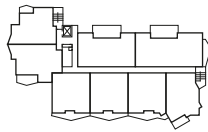
TERRACE
COLLECTION

2 Bedroom
2.5 Bath

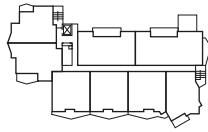
1,229 INT. SF
306 EXT. SF



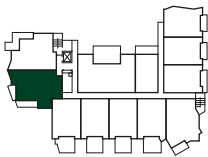
LEVEL 6



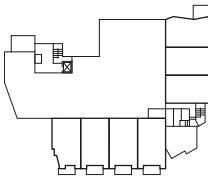
LEVEL 4 & 5



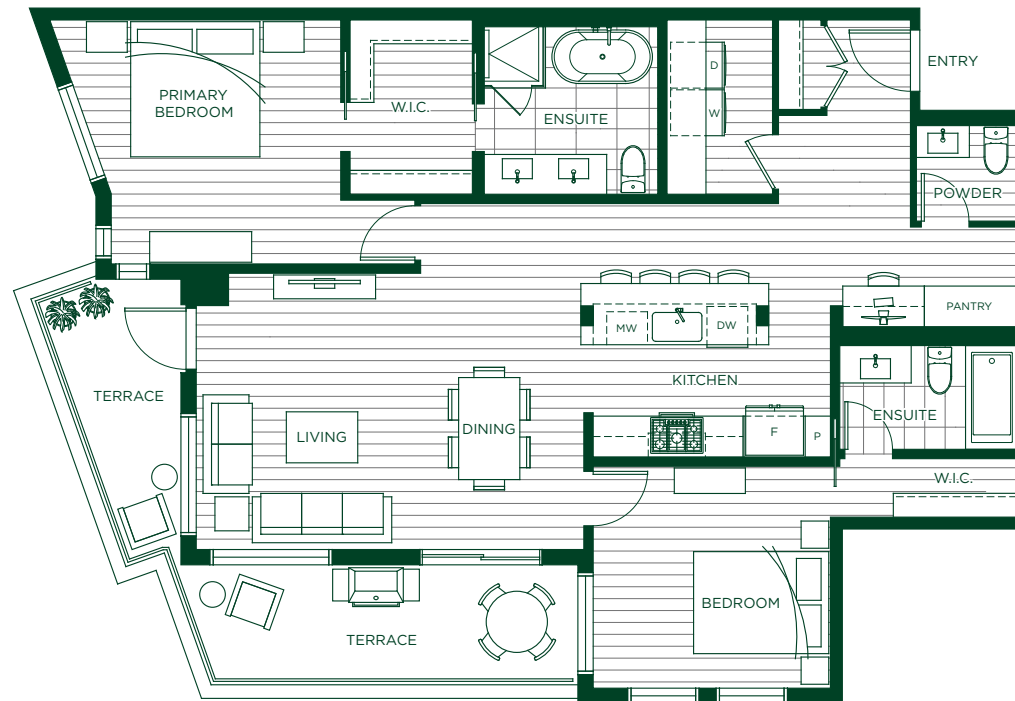
LEVEL 3



LEVEL 2



LEVEL 1



LAUREL
on mill lake

The developer reserves the right to make changes, modifications or substitutes to the building design, specifications and floorplans should they be necessary. Renderings, views, and layouts are for illustration purposes only. Sales powered by MLA Canada Realty. E.&O.E. Stonewater Ventures (No. 33160) Ltd. 2022.

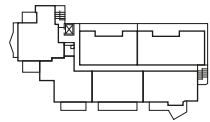
Plan A

LEVELS 3-5

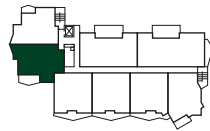
LAKESIDE
COLLECTION

2 Bedroom
2.5 Bath

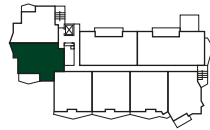
1,239 INT. SF
154 EXT. SF



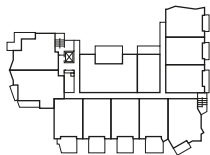
LEVEL 6



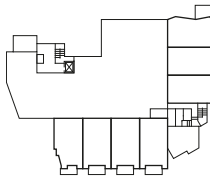
LEVEL 4 & 5



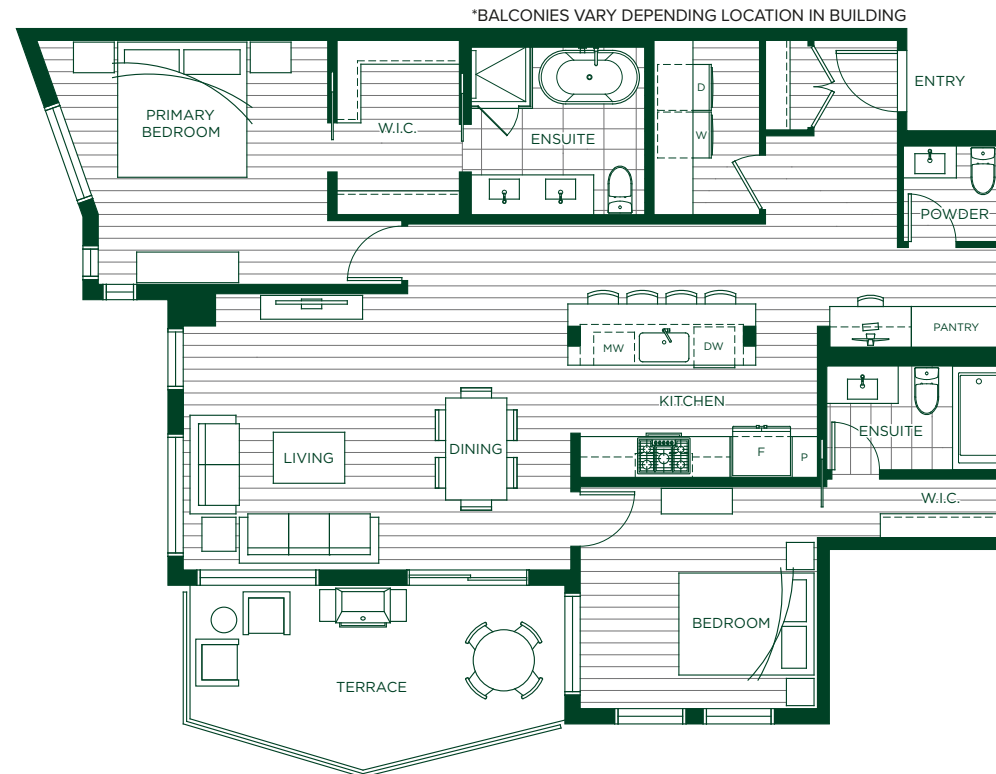
LEVEL 3



LEVEL 2



LEVEL 1



LAUREL
on mill lake

The developer reserves the right to make changes, modifications or substitutes to the building design, specifications and floorplans should they be necessary. Renderings, views, and layouts are for illustration purposes only. Sales powered by MLA Canada Realty. E.&O.E. Stonewater Ventures (No. 33160) Ltd. 2022.

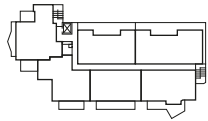
Plan B

LEVEL 2

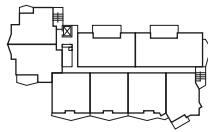
TERRACE
COLLECTION

2 Bedroom
2 Bath

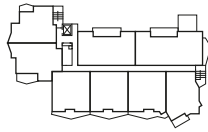
1,088 INT. SF
602 EXT. SF



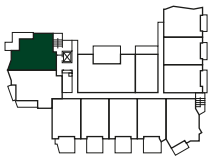
LEVEL 6



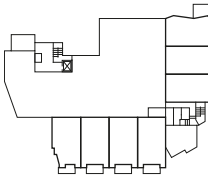
LEVEL 4 & 5



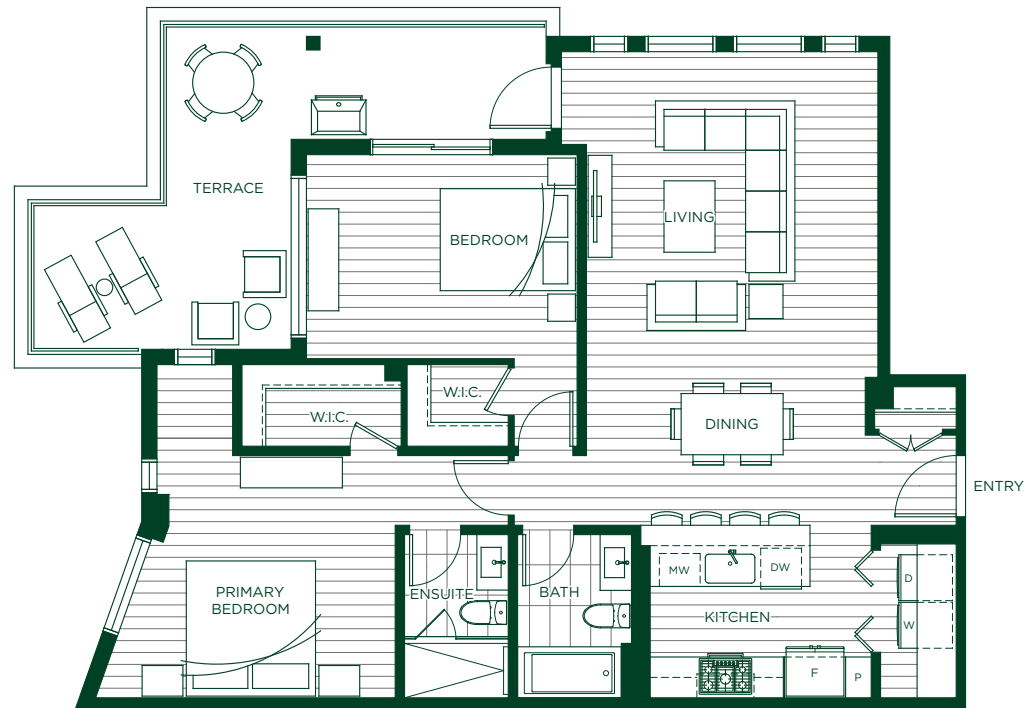
LEVEL 3



LEVEL 2



LEVEL 1



LAUREL
on mill lake

The developer reserves the right to make changes, modifications or substitutes to the building design, specifications and floorplans should they be necessary. Renderings, views, and layouts are for illustration purposes only. Sales powered by MLA Canada Realty. E.&O.E. Stonewater Ventures (No. 33160) Ltd. 2022.

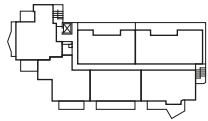
Plan B

LEVELS 3-5

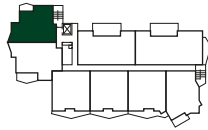
LAKESIDE
COLLECTION

2 Bedroom
2 Bath

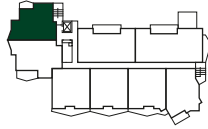
1,088 – 1,102
89 INT. SF
EXT. SF



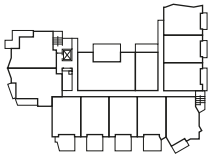
LEVEL 6



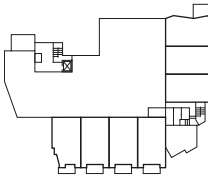
LEVEL 4 & 5



LEVEL 3



LEVEL 2



LEVEL 1



LAUREL
on mill lake

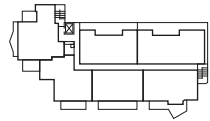
The developer reserves the right to make changes, modifications or substitutes to the building design, specifications and floorplans should they be necessary. Renderings, views, and layouts are for illustration purposes only. Sales powered by MLA Canada Realty. E.&O.E. Stonewater Ventures (No. 33160) Ltd. 2022.

Plan C1

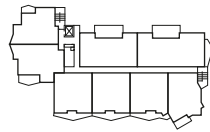
TERRACE
COLLECTION

2 Bedroom
3 Bath

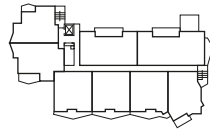
1,549 INT. SF
420 EXT. SF



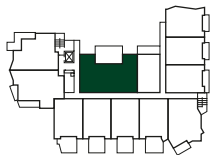
LEVEL 6



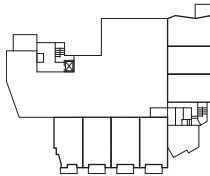
LEVEL 4 & 5



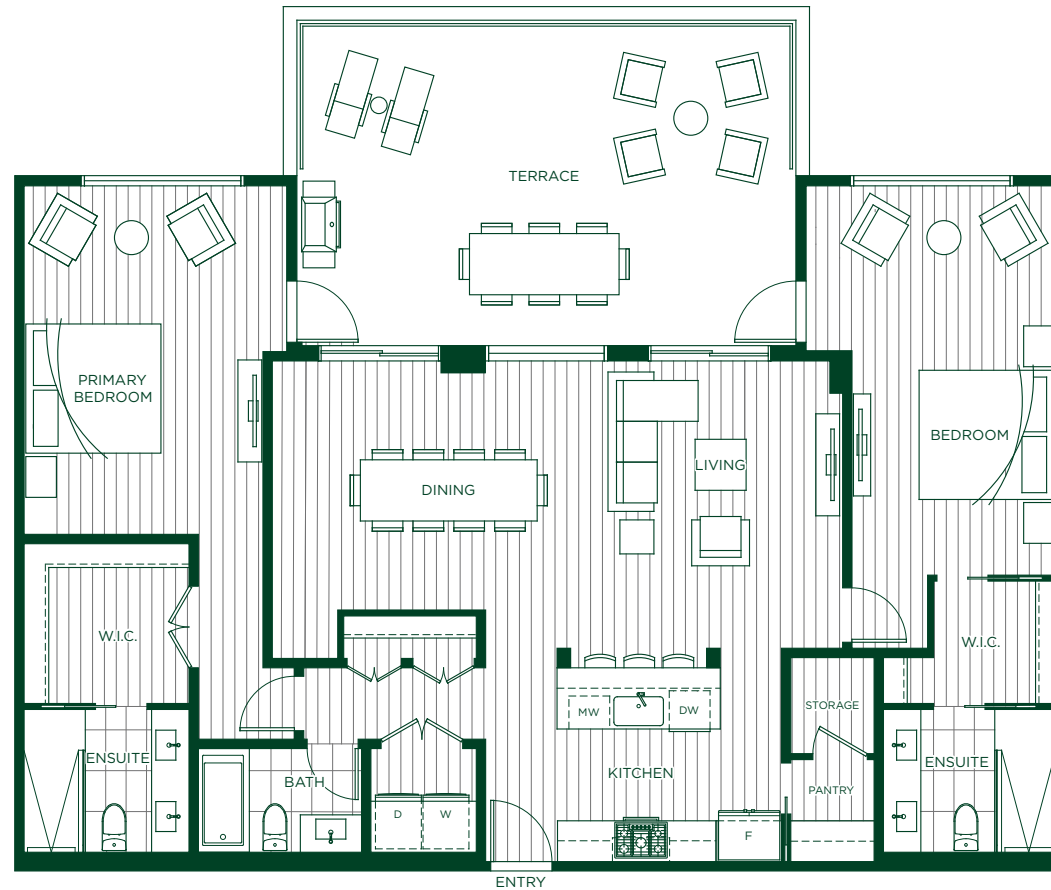
LEVEL 3



LEVEL 2



LEVEL 1



LAUREL
on mill lake

The developer reserves the right to make changes, modifications or substitutes to the building design, specifications and floorplans should they be necessary. Renderings, views, and layouts are for illustration purposes only. Sales powered by MLA Canada Realty. E.&O.E. Stonewater Ventures (No. 33160) Ltd. 2022.

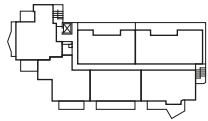
Plan C

LEVEL 3

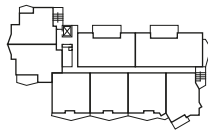
BAKERVILLE
COLLECTION

2 Bedroom
3 Bath

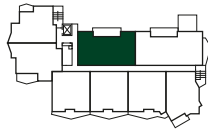
1,441 INT. SF
318 EXT. SF



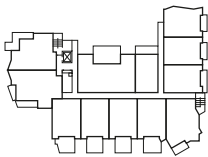
LEVEL 6



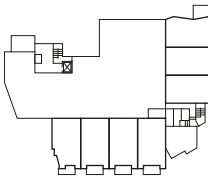
LEVEL 4 & 5



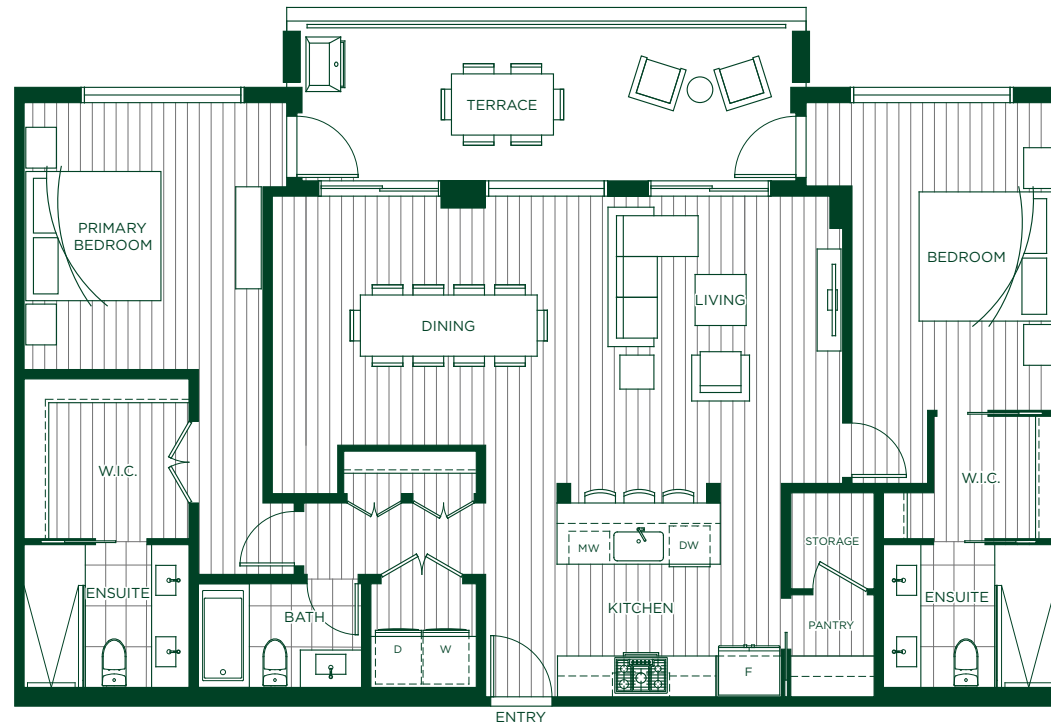
LEVEL 3



LEVEL 2



LEVEL 1



LAUREL
on mill lake

The developer reserves the right to make changes, modifications or substitutes to the building design, specifications and floorplans should they be necessary. Renderings, views, and layouts are for illustration purposes only. Sales powered by MLA Canada Realty. E.&O.E. Stonewater Ventures (No. 33160) Ltd. 2022.

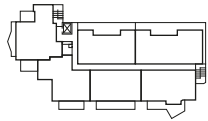
Plan C

LEVELS 4-5

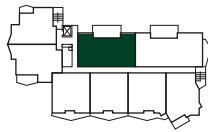
BAKERVILLE
COLLECTION

2 Bedroom
3 Bath

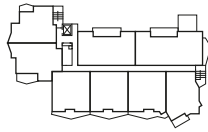
1,441 INT. SF
290 EXT. SF



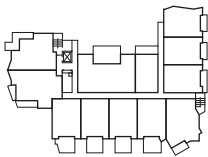
LEVEL 6



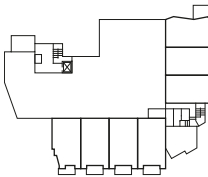
LEVEL 4 & 5



LEVEL 3



LEVEL 2



LEVEL 1



LAUREL
on mill lake

The developer reserves the right to make changes, modifications or substitutes to the building design, specifications and floorplans should they be necessary. Renderings, views, and layouts are for illustration purposes only. Sales powered by MLA Canada Realty. E.&O.E. Stonewater Ventures (No. 33160) Ltd. 2022.

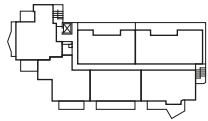
Plan D

LEVEL 3

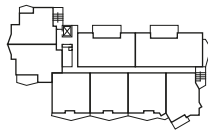
BAKERVILLE
COLLECTION

3 Bedroom
2.5 Bath

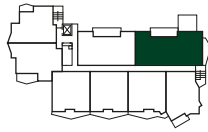
1,687 INT. SF
467 EXT. SF



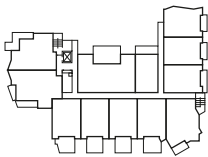
LEVEL 6



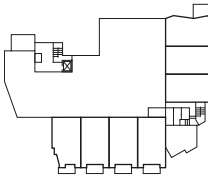
LEVEL 4 & 5



LEVEL 3



LEVEL 2



LEVEL 1



LAUREL
on mill lake

The developer reserves the right to make changes, modifications or substitutes to the building design, specifications and floorplans should they be necessary. Renderings, views, and layouts are for illustration purposes only. Sales powered by MLA Canada Realty. E.&O.E. Stonewater Ventures (No. 33160) Ltd. 2022.

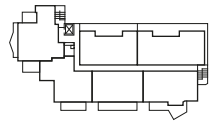
Plan D

LEVELS 4-5

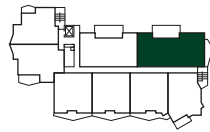
BAKERVUE
COLLECTION

3 Bedroom
2.5 Bath

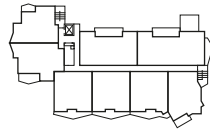
1,687 INT. SF
417 EXT. SF



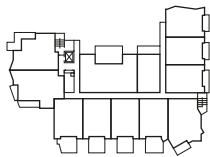
LEVEL 6



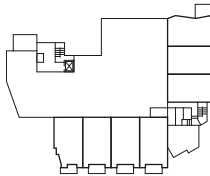
LEVEL 4 & 5



LEVEL 3



LEVEL 2



LEVEL 1



LAUREL
on mill lake

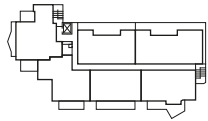
The developer reserves the right to make changes, modifications or substitutes to the building design, specifications and floorplans should they be necessary. Renderings, views, and layouts are for illustration purposes only. Sales powered by MLA Canada Realty. E.&O.E. Stonewater Ventures (No. 33160) Ltd. 2022.

Plan E

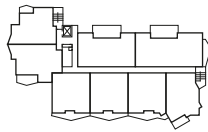
TERRACE
COLLECTION

1 Bedroom + Den
1 Bath

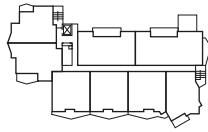
689 INT. SF
162 EXT. SF



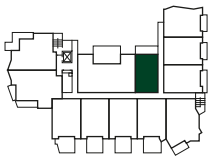
LEVEL 6



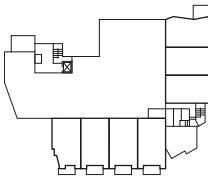
LEVEL 4 & 5



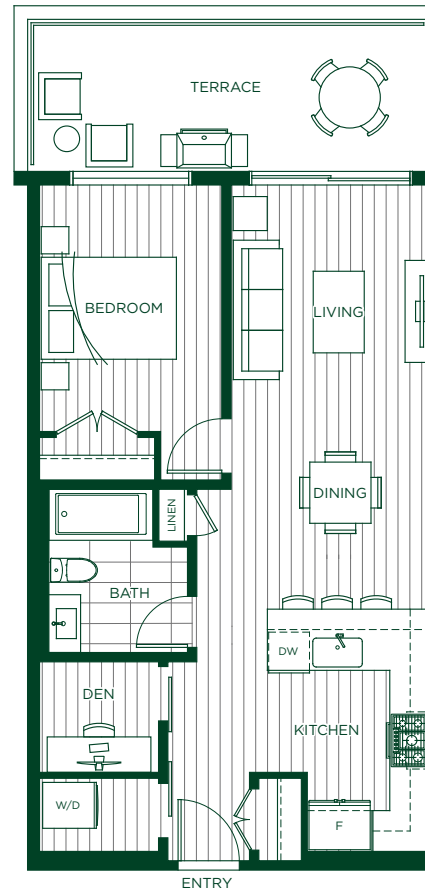
LEVEL 3



LEVEL 2



LEVEL 1



LAUREL
on mill lake

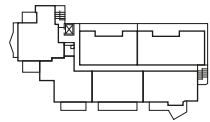
The developer reserves the right to make changes, modifications or substitutes to the building design, specifications and floorplans should they be necessary. Renderings, views, and layouts are for illustration purposes only. Sales powered by MLA Canada Realty. E.&O.E. Stonewater Ventures (No. 33160) Ltd. 2022.

Plan H

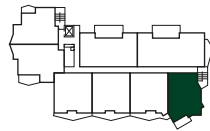
LAKEFRONT
COLLECTION

2 Bedroom
2 Bath

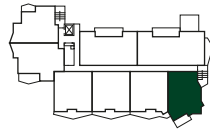
1,096 – 1,121 INT. SF
80 – 114 EXT. SF



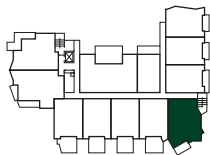
LEVEL 6



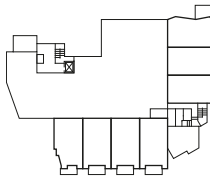
LEVEL 4 & 5



LEVEL 3



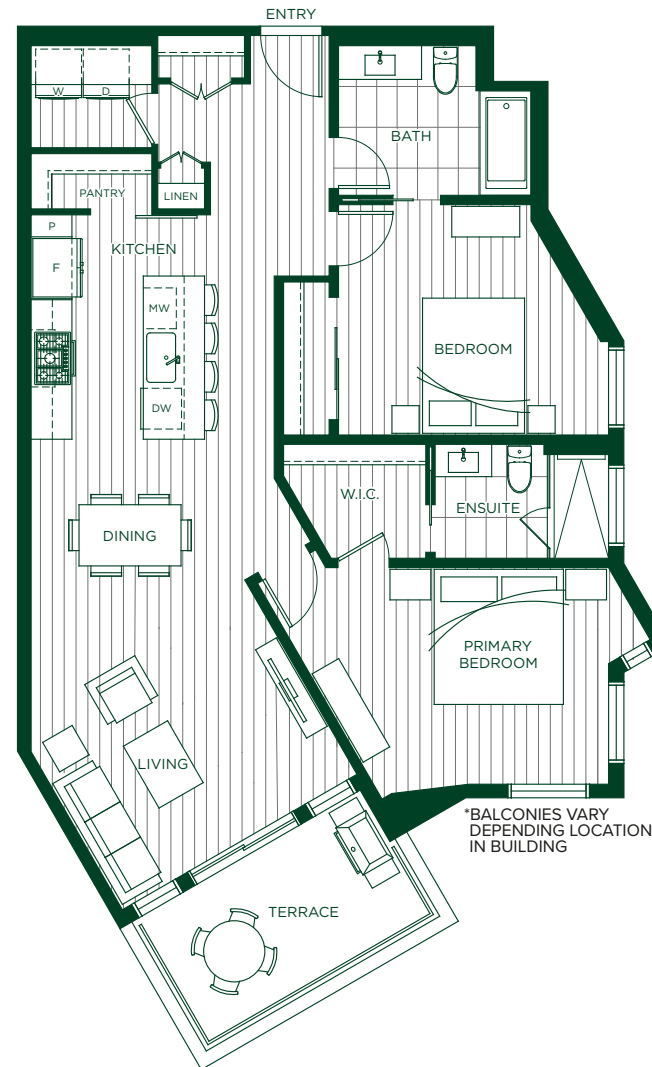
LEVEL 2



LEVEL 1



LAUREL
on mill lake



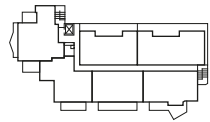
The developer reserves the right to make changes, modifications or substitutes to the building design, specifications and floorplans should they be necessary. Renderings, views, and layouts are for illustration purposes only. Sales powered by MLA Canada Realty. E.&O.E. Stonewater Ventures (No. 33160) Ltd. 2022.

Plan J

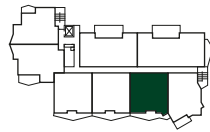
LAKEFRONT
COLLECTION

2 Bedroom
2 Bath

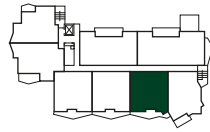
1,199 INT. SF
196 EXT. SF



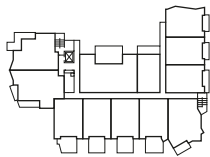
LEVEL 6



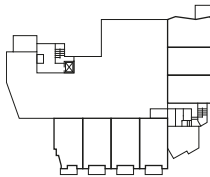
LEVEL 4 & 5



LEVEL 3



LEVEL 2



LEVEL 1



*BALCONIES VARY DEPENDING LOCATION IN BUILDING

LAUREL
on mill lake

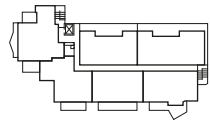
The developer reserves the right to make changes, modifications or substitutes to the building design, specifications and floorplans should they be necessary. Renderings, views, and layouts are for illustration purposes only. Sales powered by MLA Canada Realty. E.&O.E. Stonewater Ventures (No. 33160) Ltd. 2022.

Plan J2

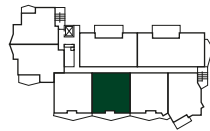
LAKEFRONT
COLLECTION

2 Bedroom
2 Bath

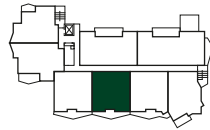
1,194
176 – 178 INT. SF
EXT. SF



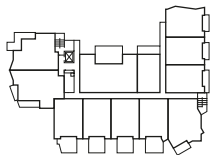
LEVEL 6



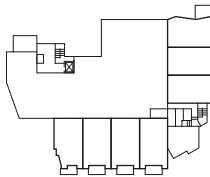
LEVEL 4 & 5



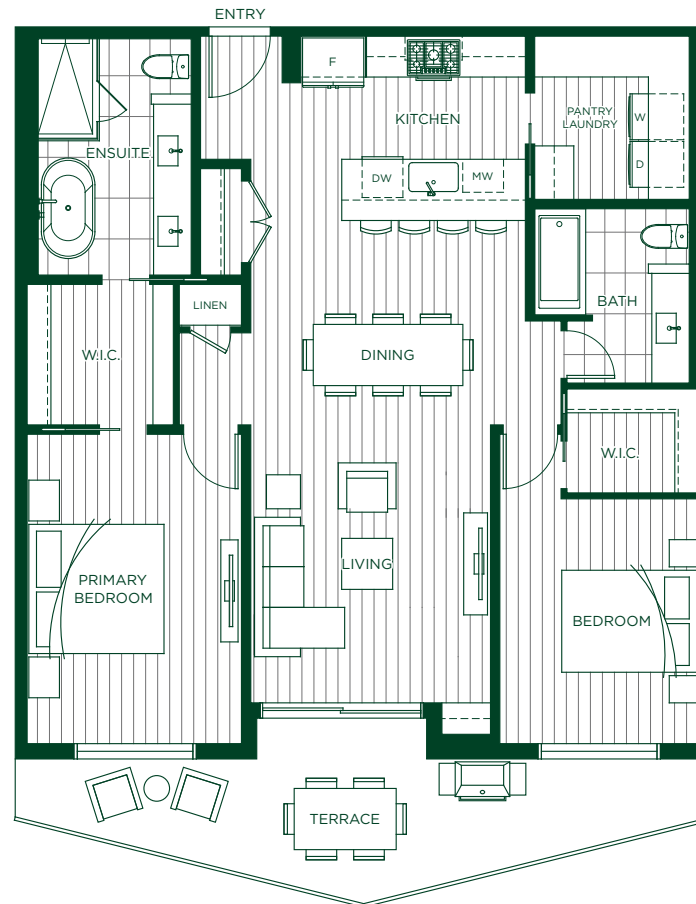
LEVEL 3



LEVEL 2



LEVEL 1



*BALCONIES VARY DEPENDING LOCATION IN BUILDING

LAUREL
on mill lake

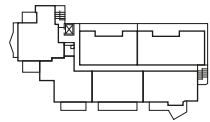
The developer reserves the right to make changes, modifications or substitutes to the building design, specifications and floorplans should they be necessary. Renderings, views, and layouts are for illustration purposes only. Sales powered by MLA Canada Realty. E.&O.E. Stonewater Ventures (No. 33160) Ltd. 2022.

Plan J3

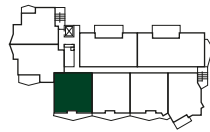
LAKEFRONT
COLLECTION

2 Bedroom
2 Bath

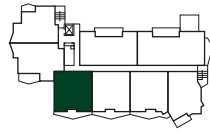
1,194
177 – 180 INT. SF
EXT. SF



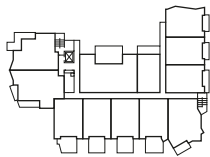
LEVEL 6



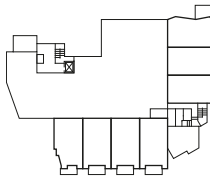
LEVEL 4 & 5



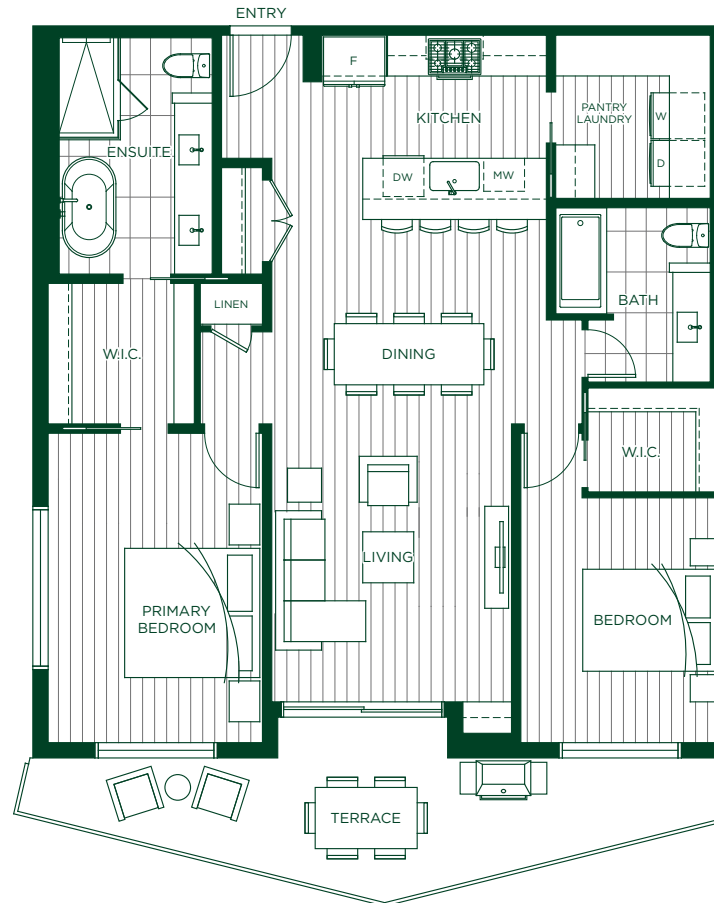
LEVEL 3



LEVEL 2



LEVEL 1



*BALCONIES VARY DEPENDING LOCATION IN BUILDING

LAUREL
on mill lake

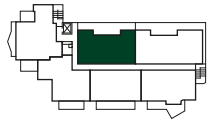
The developer reserves the right to make changes, modifications or substitutes to the building design, specifications and floorplans should they be necessary. Renderings, views, and layouts are for illustration purposes only. Sales powered by MLA Canada Realty. E.&O.E. Stonewater Ventures (No. 33160) Ltd. 2022.

PH 6

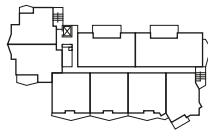
PENTHOUSE
COLLECTION

2 Bedroom
3 Bath

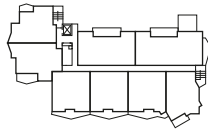
1,441 INT. SF
659 EXT. SF



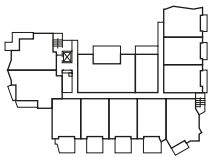
LEVEL 6



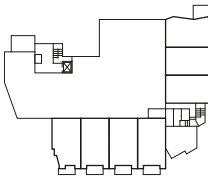
LEVEL 4 & 5



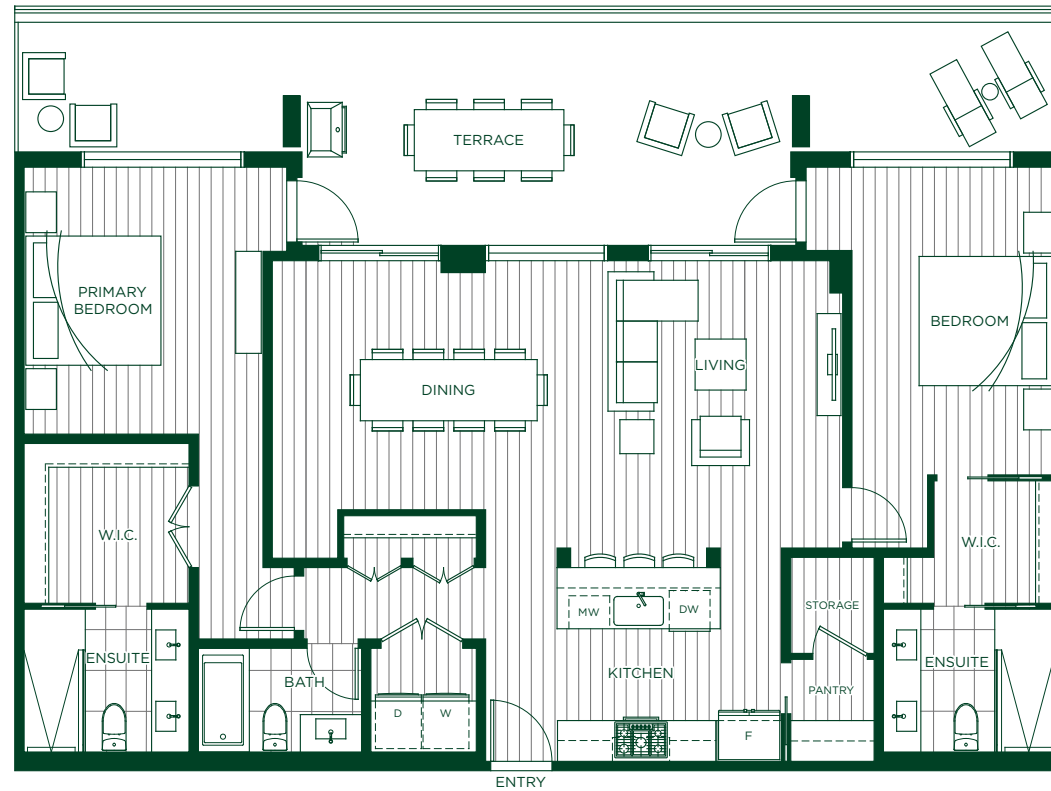
LEVEL 3



LEVEL 2



LEVEL 1



The developer reserves the right to make changes, modifications or substitutes to the building design, specifications and floorplans should they be necessary. Renderings, views, and layouts are for illustration purposes only. Sales powered by MLA Canada Realty. E.&O.E. Stonewater Ventures (No. 33160) Ltd. 2022.

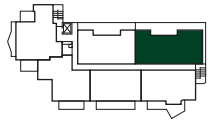
LAUREL
on mill lake

PH 5

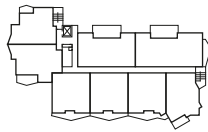
PENTHOUSE
COLLECTION

3 Bedroom
2.5 Bath

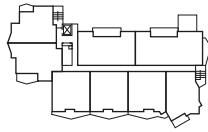
1,687 INT. SF
866 EXT. SF



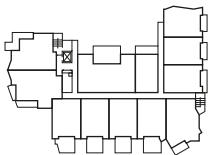
LEVEL 6



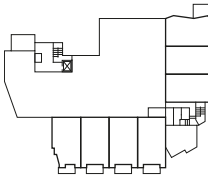
LEVEL 4 & 5



LEVEL 3



LEVEL 2



LEVEL 1



LAUREL
on mill lake

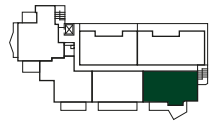
The developer reserves the right to make changes, modifications or substitutes to the building design, specifications and floorplans should they be necessary. Renderings, views, and layouts are for illustration purposes only. Sales powered by MLA Canada Realty. E.&O.E. Stonewater Ventures (No. 33160) Ltd. 2022.

PH 4

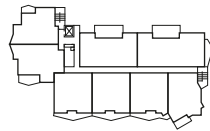
PENTHOUSE
COLLECTION

2 Bedroom
2 Bath

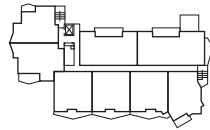
1,360 INT. SF
735 EXT. SF



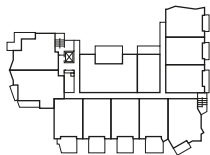
LEVEL 6



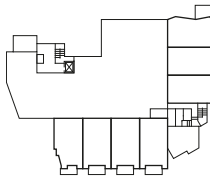
LEVEL 4 & 5



LEVEL 3



LEVEL 2



LEVEL 1



LAUREL
on mill lake

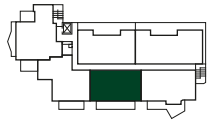
The developer reserves the right to make changes, modifications or substitutes to the building design, specifications and floorplans should they be necessary. Renderings, views, and layouts are for illustration purposes only. Sales powered by MLA Canada Realty. E.&O.E. Stonewater Ventures (No. 33160) Ltd. 2022.

PH 3

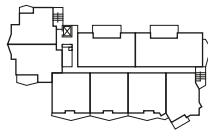
PENTHOUSE
COLLECTION

2 Bedroom
2 Bath

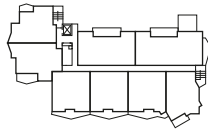
1,256 INT. SF
606 EXT. SF



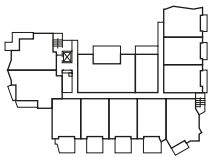
LEVEL 6



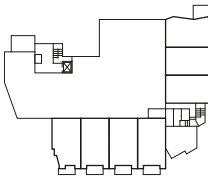
LEVEL 4 & 5



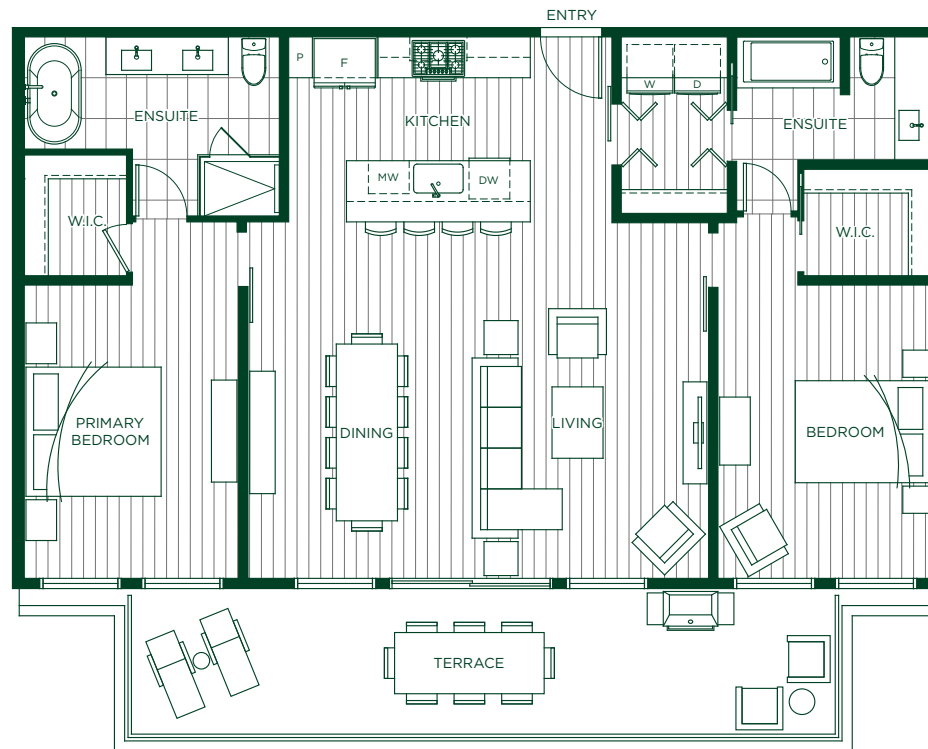
LEVEL 3



LEVEL 2



LEVEL 1



LAUREL
on mill lake

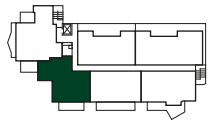
The developer reserves the right to make changes, modifications or substitutes to the building design, specifications and floorplans should they be necessary. Renderings, views, and layouts are for illustration purposes only. Sales powered by MLA Canada Realty. E.&O.E. Stonewater Ventures (No. 33160) Ltd. 2022.

PH 2

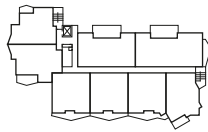
PENTHOUSE
COLLECTION

2 Bedroom
2.5 Bath

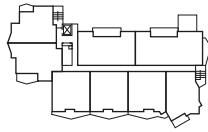
1,390 INT. SF
459 EXT. SF



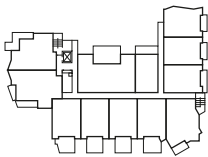
LEVEL 6



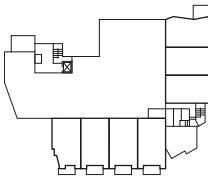
LEVEL 4 & 5



LEVEL 3



LEVEL 2



LEVEL 1



LAUREL
on mill lake

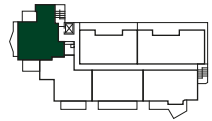
The developer reserves the right to make changes, modifications or substitutes to the building design, specifications and floorplans should they be necessary. Renderings, views, and layouts are for illustration purposes only. Sales powered by MLA Canada Realty. E.&O.E. Stonewater Ventures (No. 33160) Ltd. 2022.

PH 1

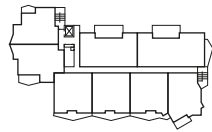
PENTHOUSE
COLLECTION

2 Bedroom + Den
2.5 Bath

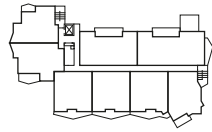
1,512 INT. SF
419 EXT. SF



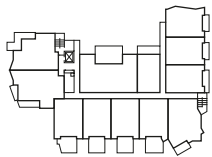
LEVEL 6



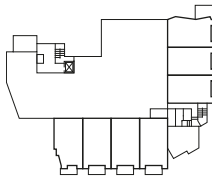
LEVEL 4 & 5



LEVEL 3



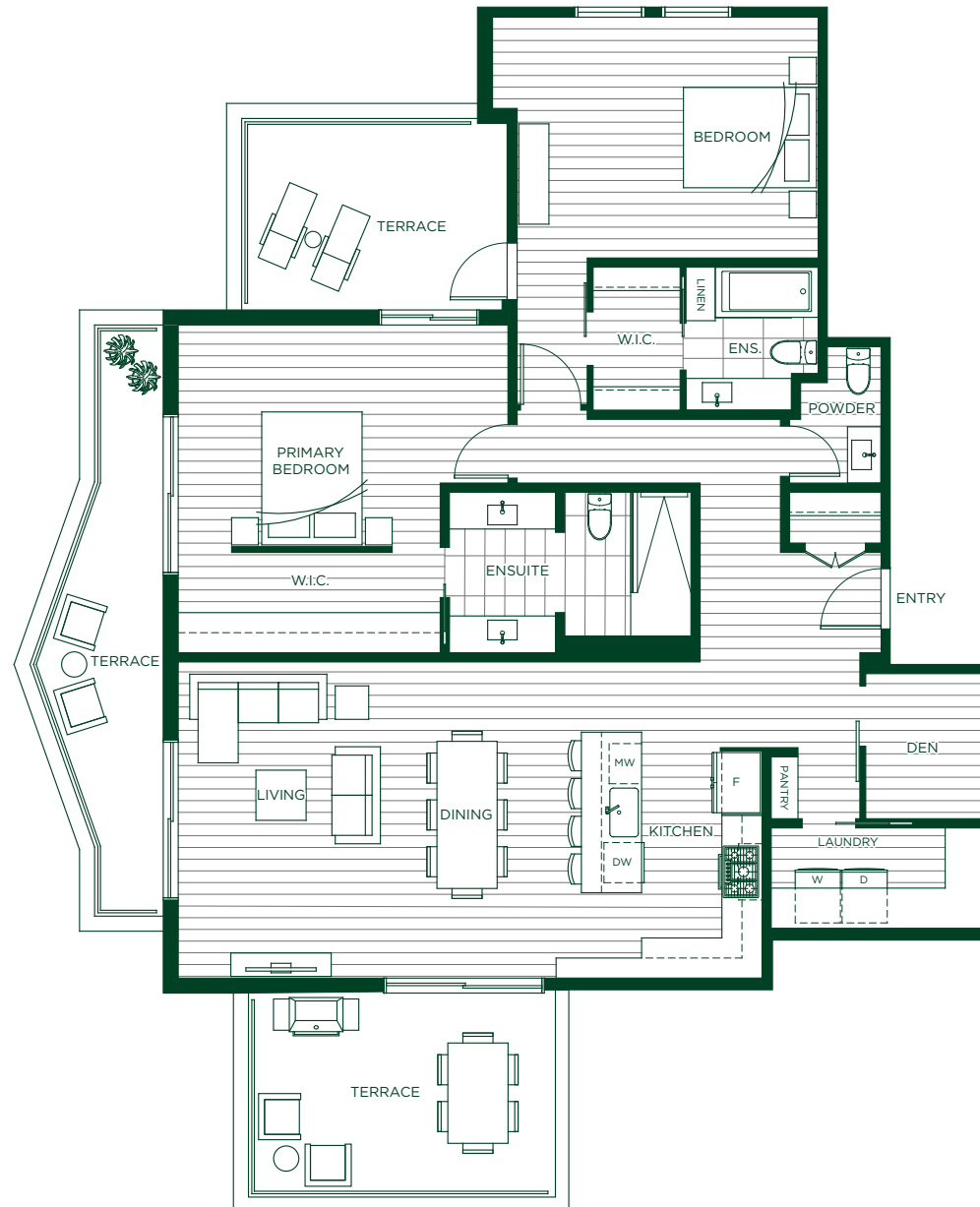
LEVEL 2



LEVEL 1

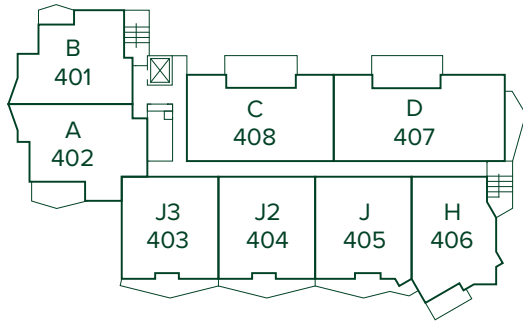


LAUREL
on mill lake

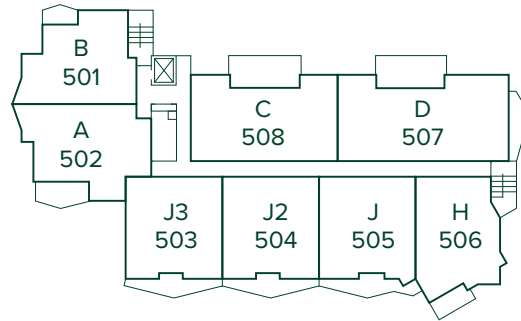


The developer reserves the right to make changes, modifications or substitutes to the building design, specifications and floorplans should they be necessary. Renderings, views, and layouts are for illustration purposes only. Sales powered by MLA Canada Realty. E.&O.E. Stonewater Ventures (No. 33160) Ltd. 2022.

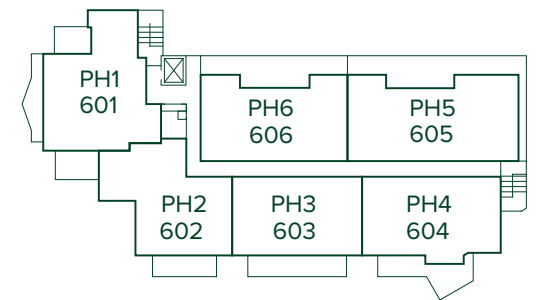
Key Plan



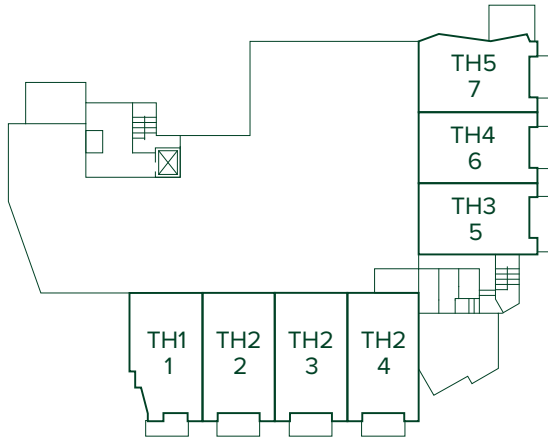
LEVEL 4



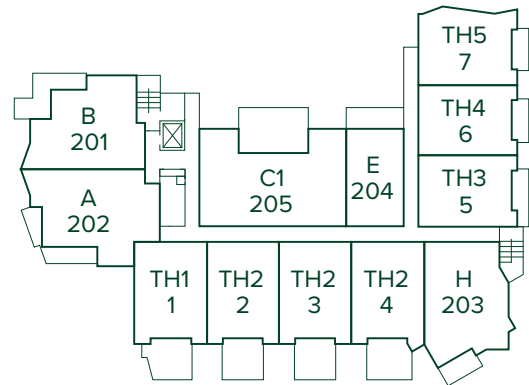
LEVEL 5



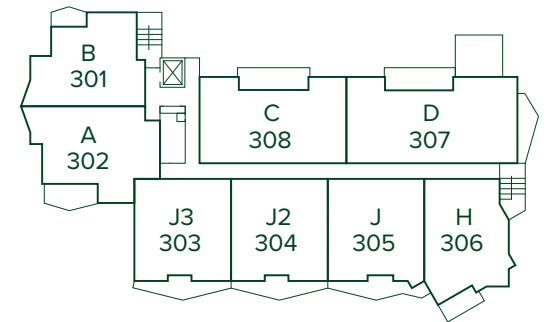
LEVEL 6



LEVEL 1



LEVEL 2



LEVEL 3



The developer reserves the right to make changes, modifications or substitutes to the building design, specifications and floorplans should they be necessary. Renderings, views, and layouts are for illustration purposes only. Sales powered by MLA Canada Realty. E.&O.E. Stonewater Ventures (No. 33160) Ltd. 2022.



SITE LOCATION – 33160 Plaxton Crescent Abbotsford BC
SALES GALLERY – 107-2790 Gladwin Road Abbotsford BC

LaurelMillLake.com | 604.835.5253

