

The Richmond community offers a mix of modern amenities and historical charm. It's known for its tree-lined streets, proximity to downtown Calgary, access to Crowchild Trail, and vibrant local culture. Residents enjoy easy access to parks like Richmond Green and Shaganappi Park, as well as trendy shops, restaurants, and cafes along 17th Avenue SW. With excellent schools and community events, Richmond is a sought-after neighborhood for families and professionals alike.

At Richmond Luxe you will enjoy maintenance-free living, private patios and off street parking in your single detached garage.

2220 26 Ave SW, Calgary

[www.crystalcreekhomes.ca/richmond](http://www.crystalcreekhomes.ca/richmond)

Contact our team for more information:

Jennifer Sinclair

Phone: 403-930-6390

Email: [richmond@crystalcreekhomes.ca](mailto:richmond@crystalcreekhomes.ca)



UNIT 3



*Inner city luxury living*

An unparalleled urban living experience in the heart of the city.

Modern townhome designs, premium finishes and rear detached garages surrounded by amenities in the established community of Richmond.



# UNIT 3

2 Bed | 2 Full Bath | 2 Half Bath | Loft + Patio 2319 SQ. FT.  
**\$789,000**

**Interior Finishes include:** Designer Cabinetry, Black Stainless Steel KitchenAid Appliances, Silgranite Under-mount Sink, Quartz Countertops, Luxury Vinyl Plank Flooring, Full Height Tile Backsplash, Upgraded Lighting Fixtures, Black Hardware, and a Stacked Full Size Washer and Dryer.



Main Floor + Patio | 723 SQ. FT



Second Floor | 636 SQ. FT

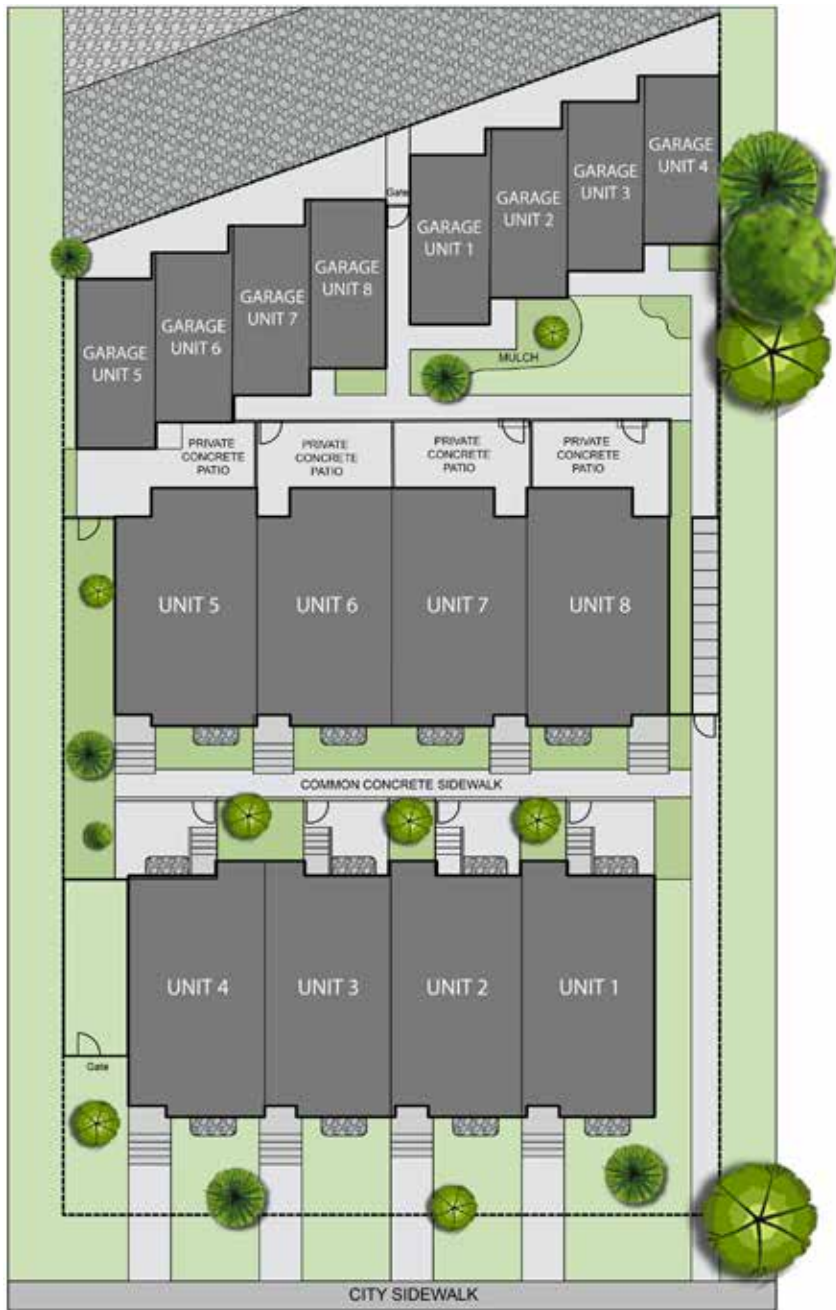


Loft + Terrace | 408 SQ. FT



Undeveloped Basement | 552 SQ. FT





The Richmond community offers a mix of modern amenities and historical charm. It's known for its tree-lined streets, proximity to downtown Calgary, access to Crowchild Trail, and vibrant local culture. Residents enjoy easy access to parks like Richmond Green and Shaganappi Park, as well as trendy shops, restaurants, and cafes along 17th Avenue SW. With excellent schools and community events, Richmond is a sought-after neighborhood for families and professionals alike.

At Richmond Luxe you will enjoy maintenance-free living, private patios and off street parking in your single detached garage.

2220 26 Ave SW, Calgary

[www.crystalcreekhomes.ca/richmond](http://www.crystalcreekhomes.ca/richmond)

Contact our team for more information:

Jennifer Sinclair

Phone: 403-930-6390

Email: [richmond@crystalcreekhomes.ca](mailto:richmond@crystalcreekhomes.ca)



*Inner city luxury living*

An unparalleled urban living experience in the heart of the city.

Modern townhome designs, premium finishes and rear detached garages surrounded by amenities in the established community of Richmond.



# UNIT 2

2 Bed | 2 Full Bath | 2 Half Bath | Loft + Patio 2338 SQ. FT.  
**\$789,000**

**Interior Finishes Include:** Designer Cabinetry, Black Stainless Steel KitchenAid Appliances, Silgranite Under-mount Sink, Quartz Countertops, Luxury Vinyl Plank Flooring, Full Height Tile Backsplash, Upgraded Lighting Fixtures, Black Hardware, and a Stacked Full Size Washer and Dryer.



Main Floor + Patio | 723 SQ. FT



Second Floor | 636 SQ. FT

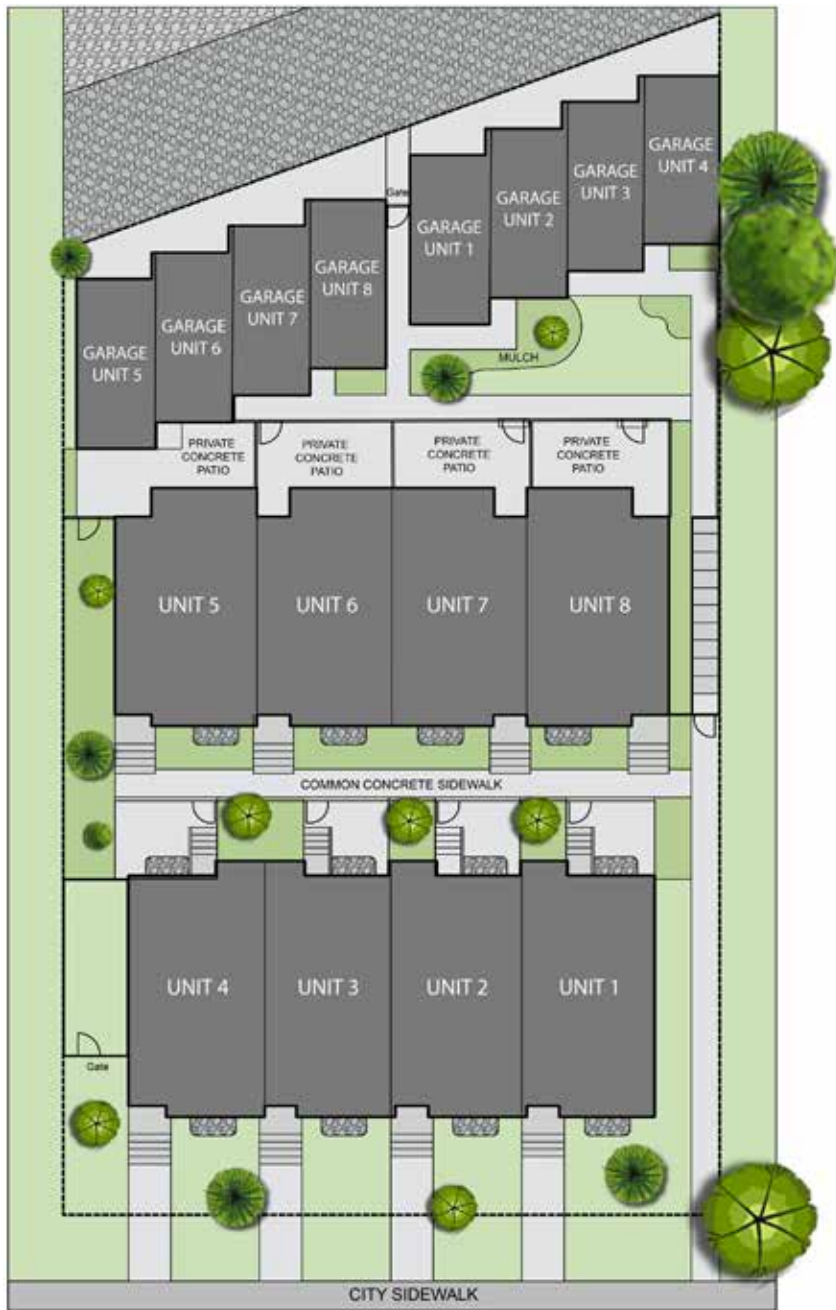


Loft + Terrace | 408 SQ. FT



Undeveloped Basement | 571 SQ. FT





The Richmond community offers a mix of modern amenities and historical charm. It's known for its tree-lined streets, proximity to downtown Calgary, access to Crowchild Trail, and vibrant local culture. Residents enjoy easy access to parks like Richmond Green and Shaganappi Park, as well as trendy shops, restaurants, and cafes along 17th Avenue SW. With excellent schools and community events, Richmond is a sought-after neighborhood for families and professionals alike.

At Richmond Luxe you will enjoy maintenance-free living, private patios and off street parking in your single detached garage.

2220 26 Ave SW, Calgary

[www.crystalcreekhomes.ca/richmond](http://www.crystalcreekhomes.ca/richmond)

Contact our team for more information:

Jennifer Sinclair

Phone: 403-930-6390

Email: [richmond@crystalcreekhomes.ca](mailto:richmond@crystalcreekhomes.ca)



## UNIT 5



*Inner city luxury living*

An unparalleled urban living experience in the heart of the city.

Modern townhome designs, premium finishes and rear detached garages surrounded by amenities in the established community of Richmond.



# UNIT 5

3 Bed | 2 Full Bath | 1 Half Bath | Patio 1994 SQ. FT.  
**\$779,000**

**Interior Finishes Include:** Designer Cabinetry, Black Stainless Steel KitchenAid Appliances, Silgranite Undermount Sink, Quartz Countertops, Luxury Vinyl Plank Flooring, Full Height Tile Backsplash, Upgraded Lighting Fixtures, Black Hardware, and a Stacked Full Size Washer and Dryer.



Main Floor + Patio | 807 SQ. FT



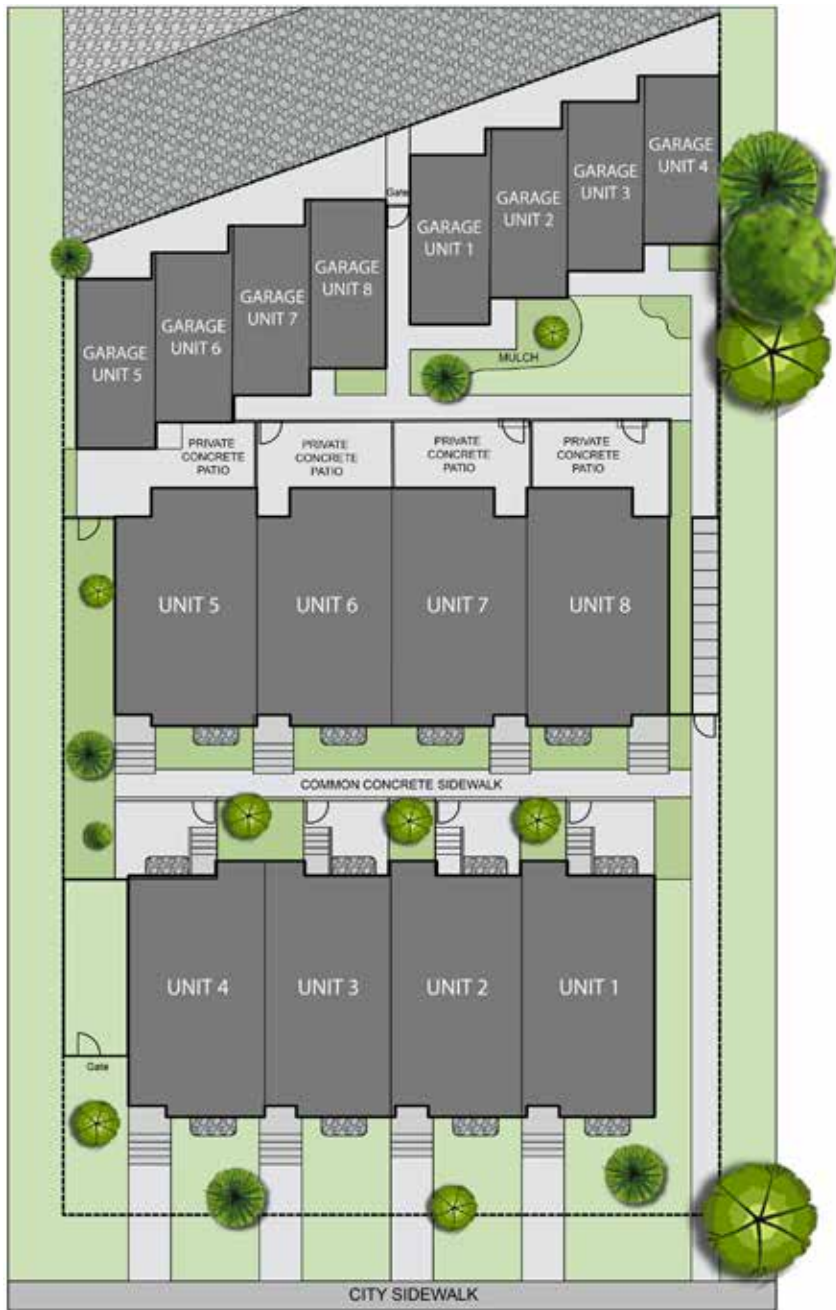
Second Floor | 616 SQ. FT



Undeveloped Basement | 571 SQ. FT







The Richmond community offers a mix of modern amenities and historical charm. It's known for its tree-lined streets, proximity to downtown Calgary, access to Crowchild Trail, and vibrant local culture. Residents enjoy easy access to parks like Richmond Green and Shaganappi Park, as well as trendy shops, restaurants, and cafes along 17th Avenue SW. With excellent schools and community events, Richmond is a sought-after neighborhood for families and professionals alike.

At Richmond Luxe you will enjoy maintenance-free living, private patios and off street parking in your single detached garage.

2220 26 Ave SW, Calgary

[www.crystalcreekhomes.ca/richmond](http://www.crystalcreekhomes.ca/richmond)

Contact our team for more information:

Jennifer Sinclair

Phone: 403-930-6390

Email: [richmond@crystalcreekhomes.ca](mailto:richmond@crystalcreekhomes.ca)



## UNIT 6



*Inner city luxury living*

An unparalleled urban living experience in the heart of the city.

Modern townhome designs, premium finishes and rear detached garages surrounded by amenities in the established community of Richmond.



UNIT 6

2 Bed | 2 Full Bath | 1 Half Bath | Patio 1977 SQ. FT.  
\$759,000

Interior Finishes Include: Designer Cabinetry, Black Stainless Steel KitchenAid Appliances, Silgranite Under-mount Sink, Quartz Countertops, Luxury Vinyl Plank Flooring, Full Height Tile Backsplash, Upgraded Lighting Fixtures, Black Hardware, and a Stacked Full Size Washer and Dryer.



Main Floor + Patio | 788 SQ. FT



Second Floor | 608 SQ. FT



Undeveloped Basement | 581 SQ. FT



All floor plans and dimensions are for illustrative purposes only and are intended to convey a concept and visualization of our floor plans. They are subject to modifications at any time and are not to be used for contractual purposes.





The Richmond community offers a mix of modern amenities and historical charm. It's known for its tree-lined streets, proximity to downtown Calgary, access to Crowchild Trail, and vibrant local culture. Residents enjoy easy access to parks like Richmond Green and Shaganappi Park, as well as trendy shops, restaurants, and cafes along 17th Avenue SW. With excellent schools and community events, Richmond is a sought-after neighborhood for families and professionals alike.

At Richmond Luxe you will enjoy maintenance-free living, private patios and off street parking in your single detached garage.

2220 26 Ave SW, Calgary

[www.crystalcreekhomes.ca/richmond](http://www.crystalcreekhomes.ca/richmond)

Contact our team for more information:

Jennifer Sinclair

Phone: 403-930-6390

Email: [richmond@crystalcreekhomes.ca](mailto:richmond@crystalcreekhomes.ca)



## UNIT 7



*Inner city luxury living*

An unparalleled urban living experience in the heart of the city.

Modern townhome designs, premium finishes and rear detached garages surrounded by amenities in the established community of Richmond.



# UNIT 7

2 Bed | 2 Full Bath | 1 Half Bath | Patio 1977 SQ. FT.  
**\$759,000**

**Interior Finishes Include:** Designer Cabinetry, Black Stainless Steel KitchenAid Appliances, Silgranite Under-mount Sink, Quartz Countertops, Luxury Vinyl Plank Flooring, Full Height Tile Backsplash, Upgraded Lighting Fixtures, Black Hardware, and a Stacked Full Size Washer and Dryer.



Main Floor + Patio | 788 SQ. FT



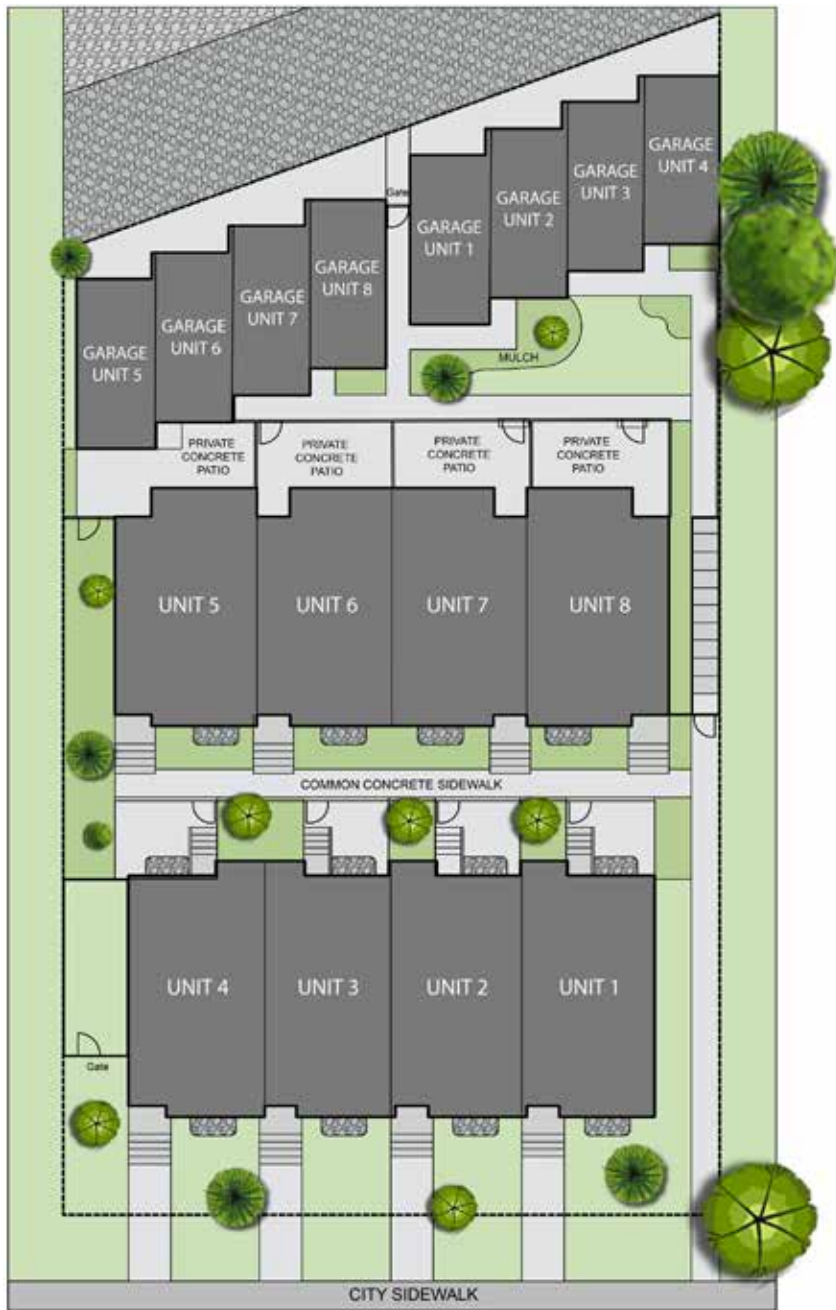
Second Floor | 608 SQ. FT



Undeveloped Basement | 581 SQ. FT







The Richmond community offers a mix of modern amenities and historical charm. It's known for its tree-lined streets, proximity to downtown Calgary, access to Crowchild Trail, and vibrant local culture. Residents enjoy easy access to parks like Richmond Green and Shaganappi Park, as well as trendy shops, restaurants, and cafes along 17th Avenue SW. With excellent schools and community events, Richmond is a sought-after neighborhood for families and professionals alike.

At Richmond Luxe you will enjoy maintenance-free living, private patios and off street parking in your single detached garage.

2220 26 Ave SW, Calgary

[www.crystalcreekhomes.ca/richmond](http://www.crystalcreekhomes.ca/richmond)

Contact our team for more information:

Jennifer Sinclair

Phone: 403-930-6390

Email: [richmond@crystalcreekhomes.ca](mailto:richmond@crystalcreekhomes.ca)



## UNIT 8



*Inner city luxury living*

An unparalleled urban living experience in the heart of the city.

Modern townhome designs, premium finishes and rear detached garages surrounded by amenities in the established community of Richmond.



# UNIT 8

3 Bed | 2 Full Bath | 1 Half Bath | Patio 1994 SQ. FT.  
**\$779,900**

**Interior Finishes Include:** Designer Cabinetry, Black Stainless Steel KitchenAid Appliances, Silgranite Under-mount Sink, Quartz Countertops, Luxury Vinyl Plank Flooring, Full Height Tile Backsplash, Upgraded Lighting Fixtures, Black Hardware, and a Stacked Full Size Washer and Dryer.



Main Floor + Patio | 807 SQ. FT



Second Floor | 616 SQ. FT



Undeveloped Basement | 571 SQ. FT

