

# Archer

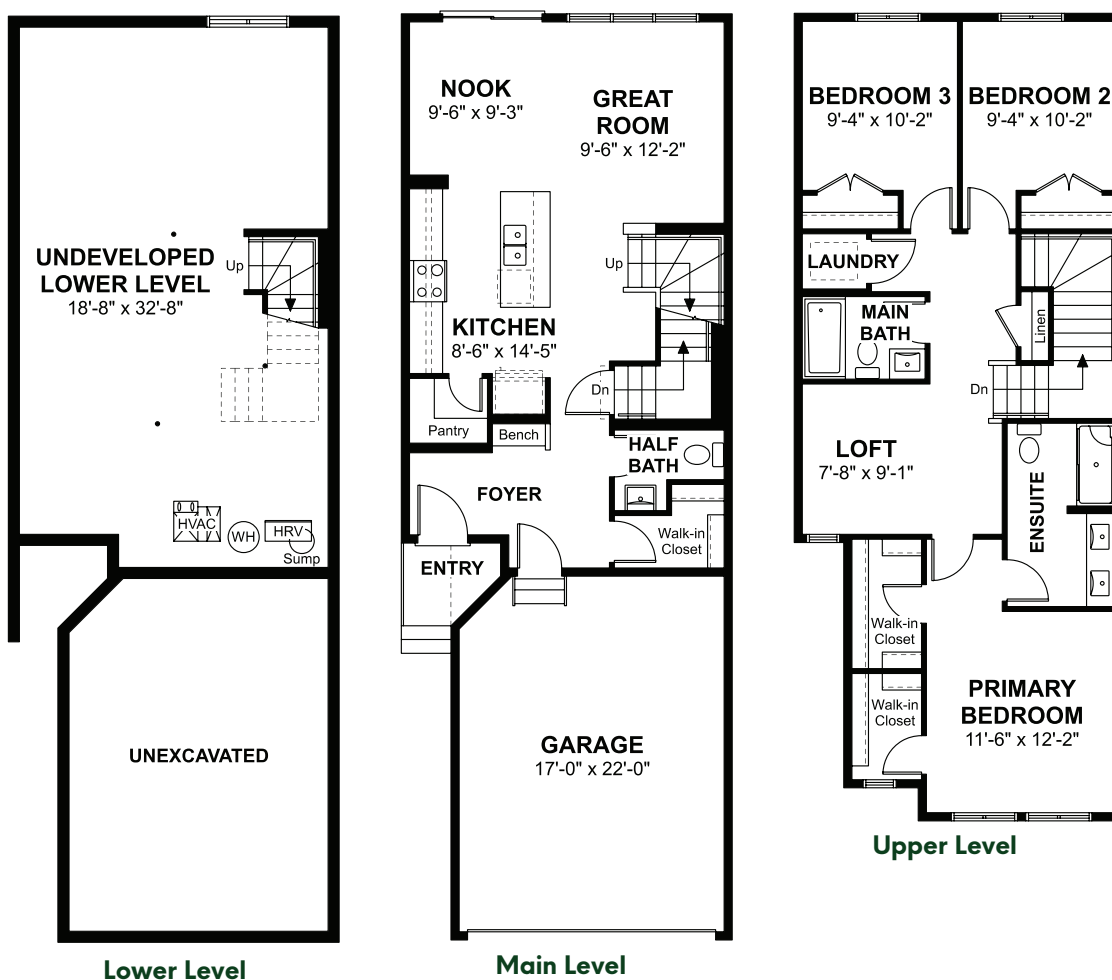
1,585 Sq. Ft. | 3 Bedrooms | 2.5 Bathrooms

## Highlights:

Quartz Countertops | 9' Main Floors | Full Tile Backsplash | Under-mount Sink | Over the Range Microwave | Luxury Vinyl Plank on Main Floor & Wet Areas | Primary Ensuite with Dual Walk-In Closets & Double sinks | Upper Floor Laundry | Loft



## Floorplan:

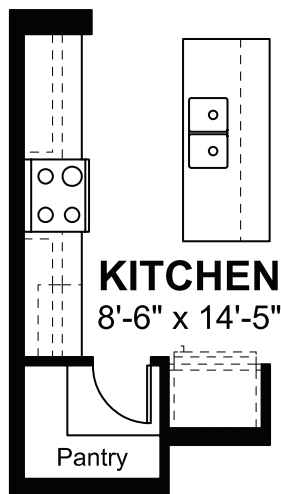


# Archer

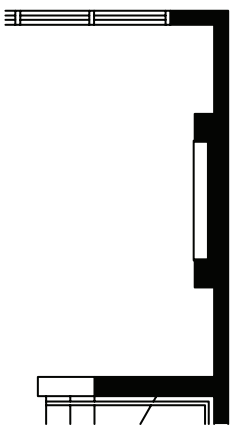
1,585 Sq. Ft. | 3 Bedrooms | 2.5 Bathrooms

Elevations, renderings and dimensions shown above are a guideline only and are intended to convey the concept and vision for the home. Architectural requirements or restrictions may differ per subdivision or as work progresses. All images and dimensions are not intended to form part any contract or warranty.  
© Copyright 02|2025

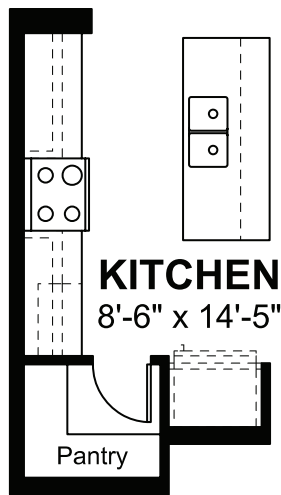
## Main Level Options:



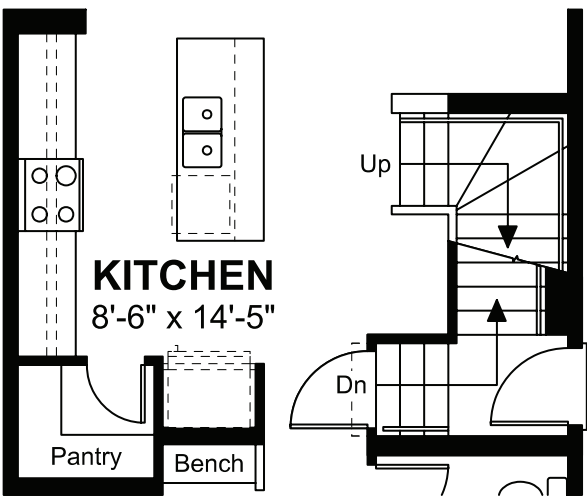
**Optional Kitchen  
Luxury Package**



**Optional Fireplace**



**Optional Kitchen  
Premium Package**



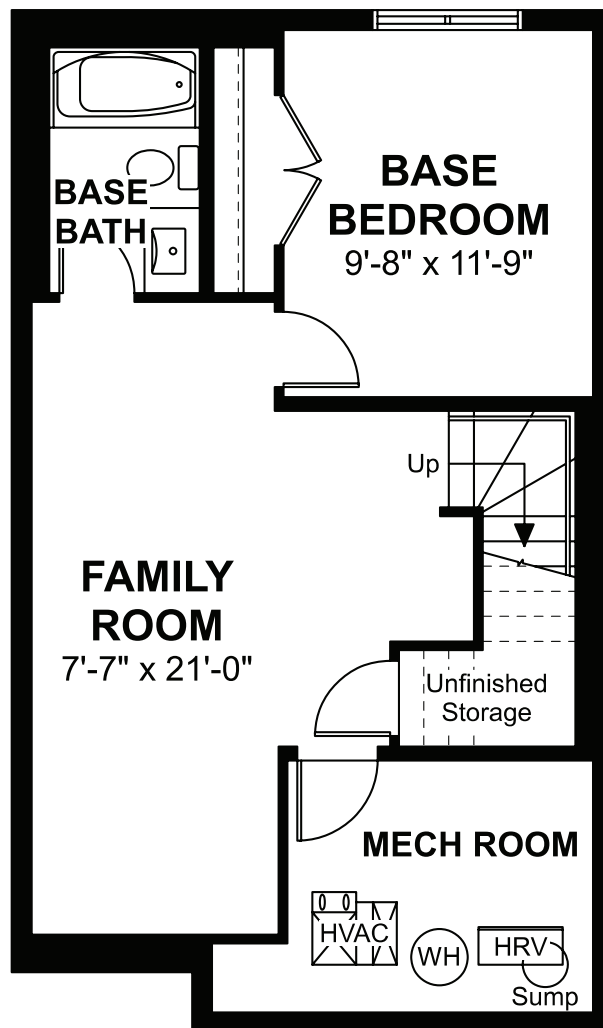
**Optional Side Entrance**

# Archer

1,585 Sq. Ft. | 3 Bedrooms | 2.5 Bathrooms

Elevations, renderings and dimensions shown above are a guideline only and are intended to convey the concept and vision for the home. Architectural requirements or restrictions may differ per subdivision or as work progresses. All images and dimensions are not intended to form part any contract or warranty.  
© Copyright 02/2025

## Lower Level Options:



**Optional Finished  
Lower Level**

# Aspen 20

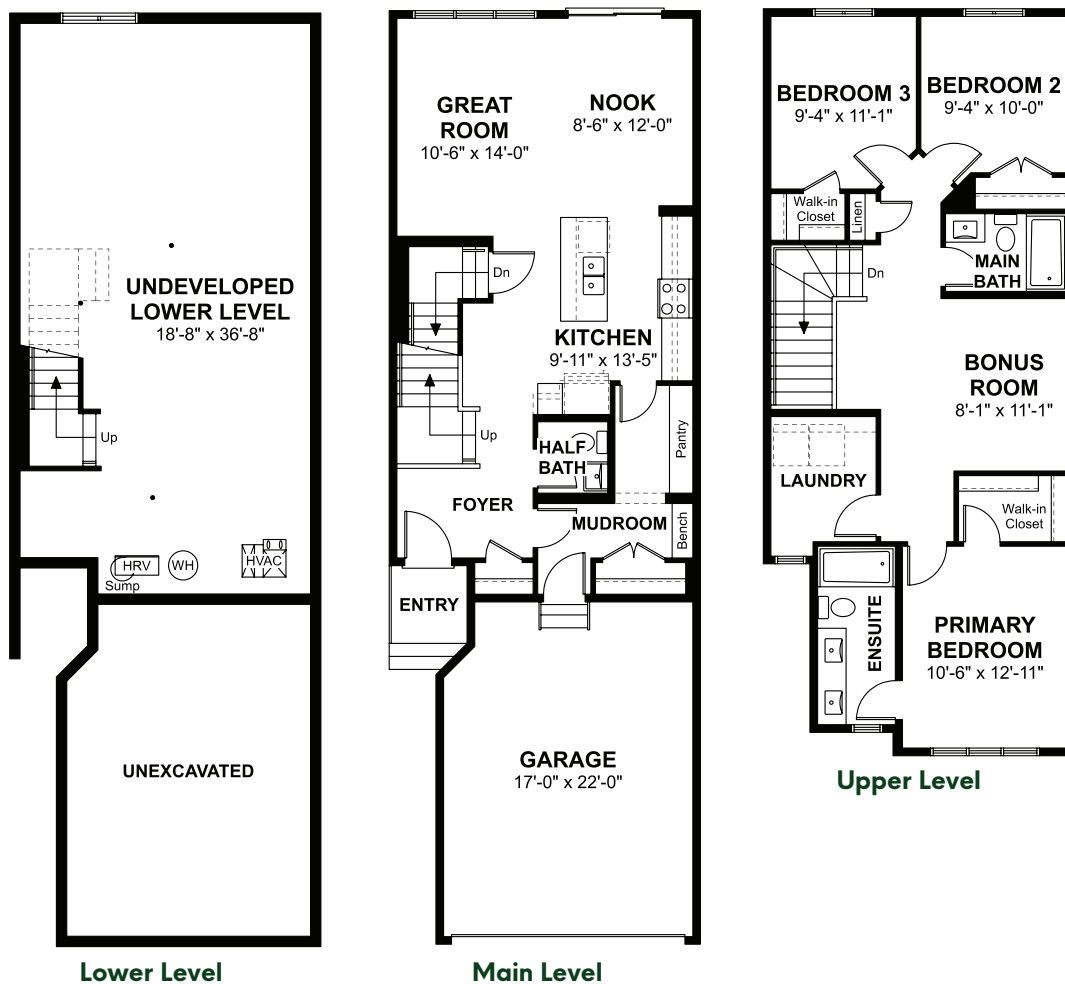
1,663 Sq. Ft. | 3 Bedrooms | 2.5 Bathrooms

## Highlights:

Quartz Countertops | 9' Main Floors | Full Tile Backsplash | Walk-Through Pantry | Undermount Sink | Over the Range Microwave | Luxury Vinyl Plank on Main Floor | Primary Ensuite with Double Sinks | Upper Floor Laundry | Bonus Room



## Floorplan:

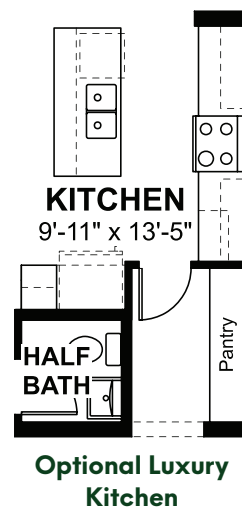
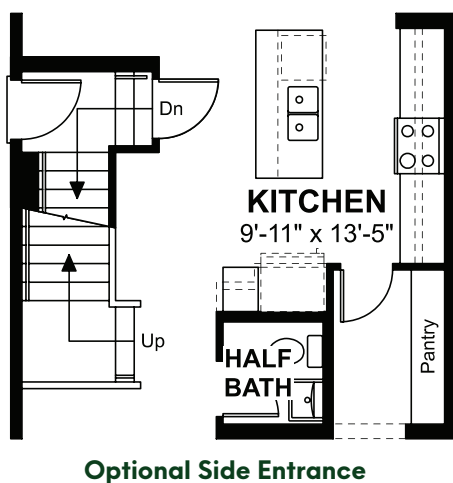
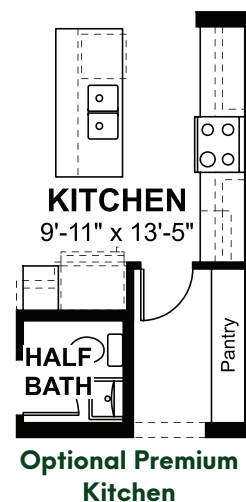
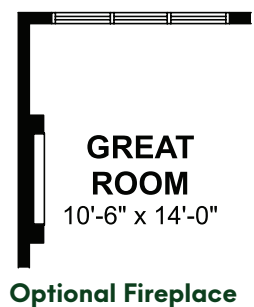


# Aspen 20

1,663 Sq. Ft. | 3 Bedrooms | 2.5 Bathrooms

Elevations, renderings and dimensions shown above are a guideline only and are intended to convey the concept and vision for the home. Architectural requirements or restrictions may differ per subdivision or as work progresses. All images and dimensions are not intended to form part any contract or warranty.  
© Copyright 04/2025

## Main Level Options:

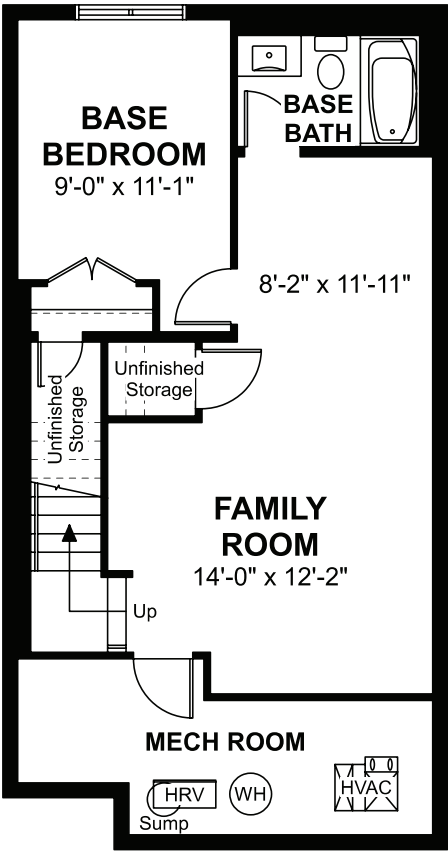


# Aspen 20

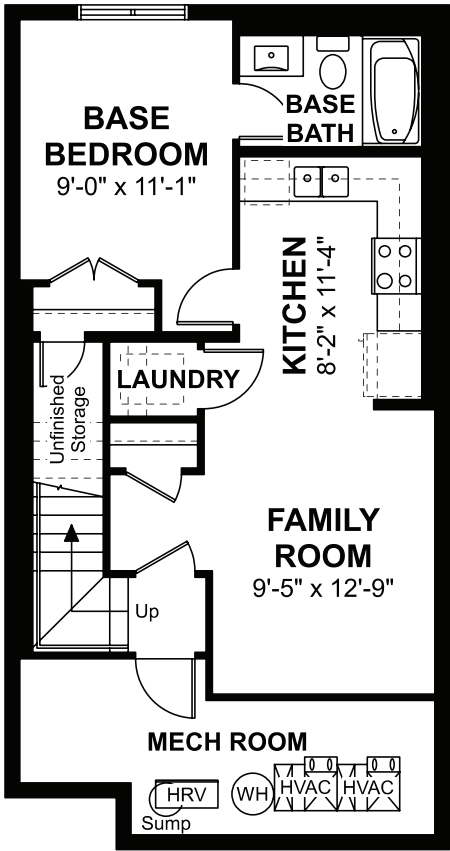
1,663 Sq. Ft. | 3 Bedrooms | 2.5 Bathrooms

Elevations, renderings and dimensions shown above are a guideline only and are intended to convey the concept and vision for the home. Architectural requirements or restrictions may differ per subdivision or as work progresses. All images and dimensions are not intended to form part any contract or warranty.  
© Copyright 04|2025

## Lower Level Options:



Optional Finished  
Lower Level



Optional Lower Level  
Legal Suite

# Sapphire

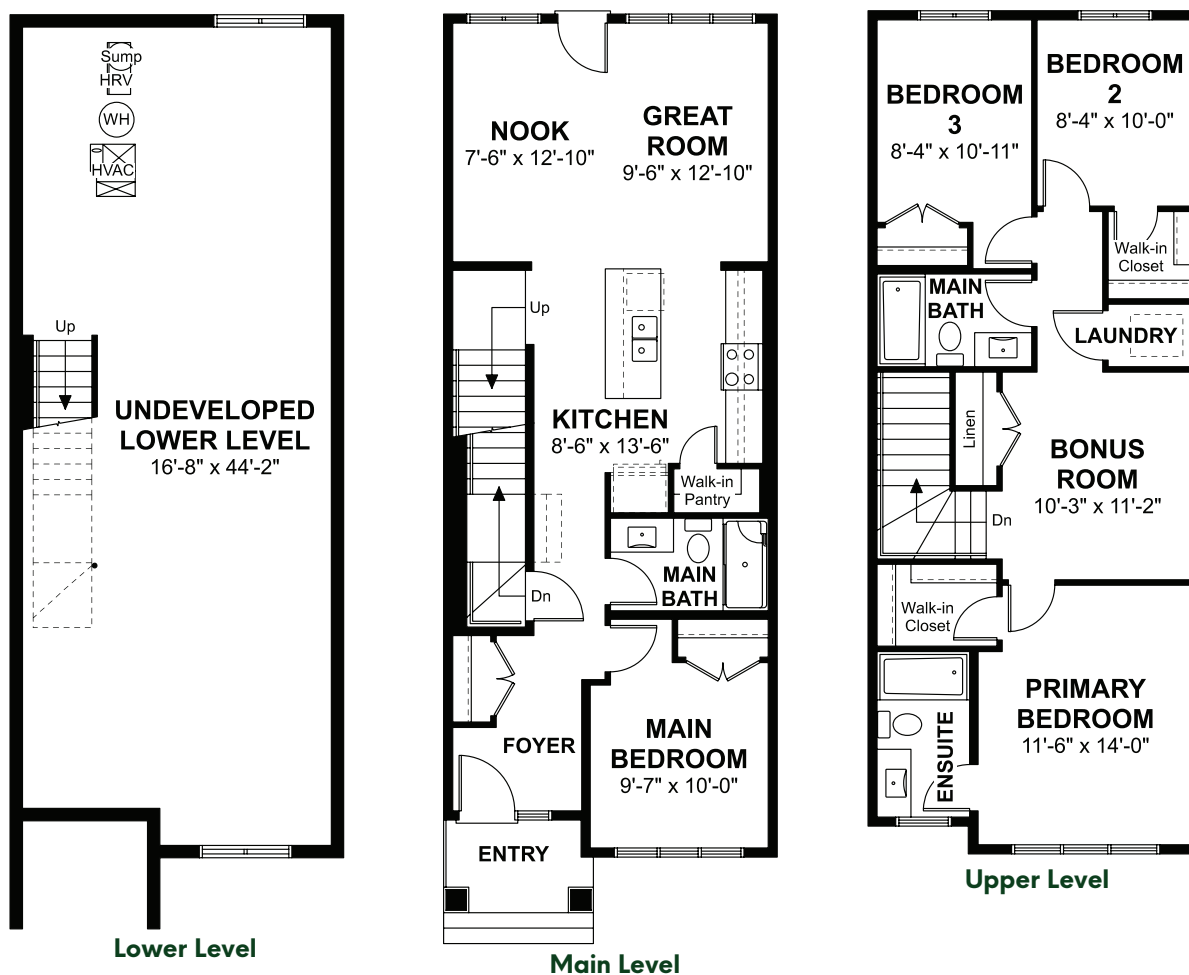
1,619 Sq. Ft. | 4 Bedrooms | 3 Bathrooms

## Highlights:

Quartz Countertops | 9' Main Floors | Full Tile Backsplash | Undermount Sink | Over the Range Microwave | Luxury Vinyl Plank on Main Floor | Main floor Bedroom and Full Bath | Upper Floor Laundry | Bonus Room



## Floorplan:

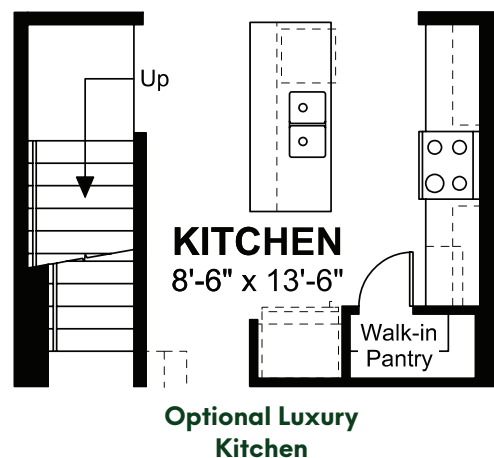
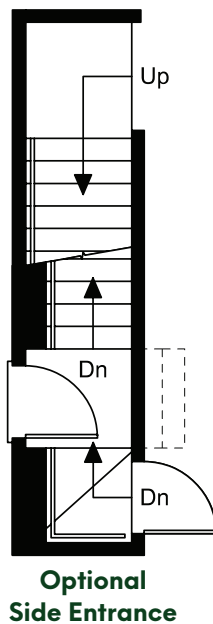
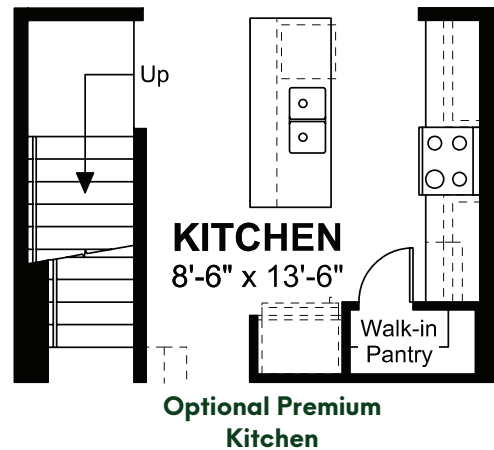


# Sapphire

1,619 Sq. Ft. | 4 Bedrooms | 3 Bathrooms

Elevations, renderings and dimensions shown above are a guideline only and are intended to convey the concept and vision for the home. Architectural requirements or restrictions may differ per subdivision or as work progresses. All images and dimensions are not intended to form part any contract or warranty.  
© Copyright 04/2025

## Main Level Options:



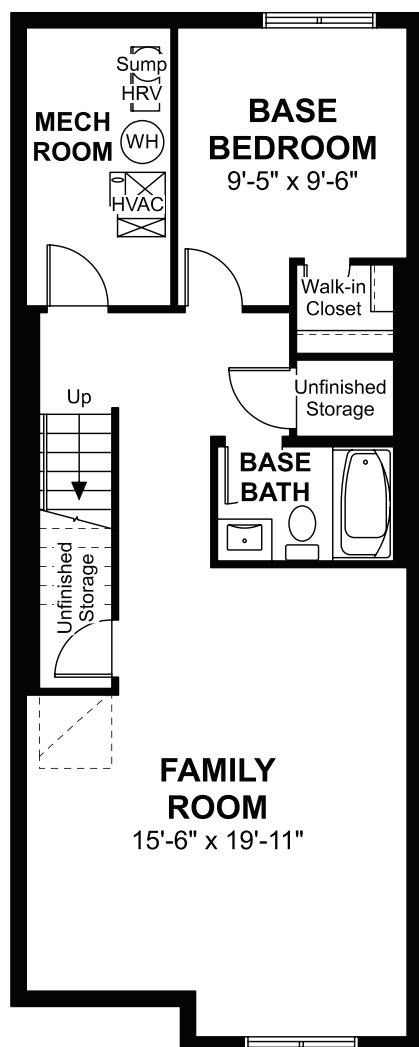


# Sapphire

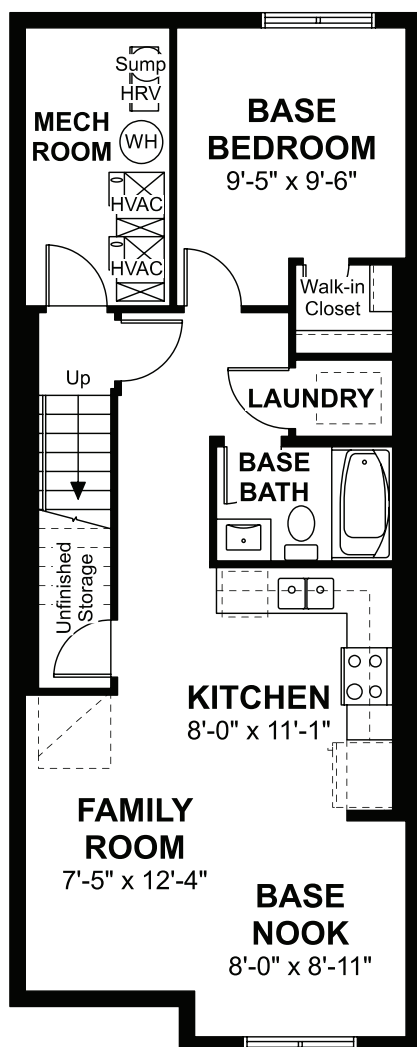
1,619 Sq. Ft. | 4 Bedrooms | 3 Bathrooms

Elevations, renderings and dimensions shown above are a guideline only and are intended to convey the concept and vision for the home. Architectural requirements or restrictions may differ per subdivision or as work progresses. All images and dimensions are not intended to form part any contract or warranty.  
© Copyright 04/2025

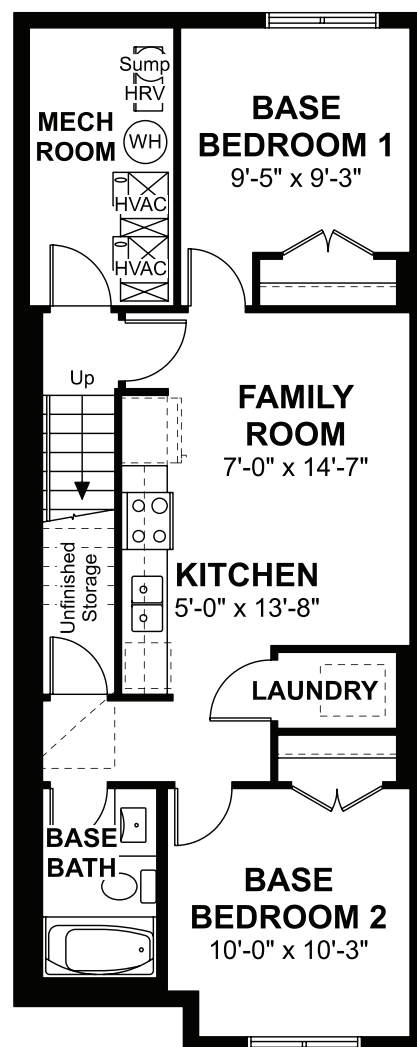
## Lower Level Options:



Optional Finished  
Lower Level



Optional Lower Level  
Legal Suite 1



Optional Lower Level  
Legal Suite 2