

KIMBERLEY HOMES

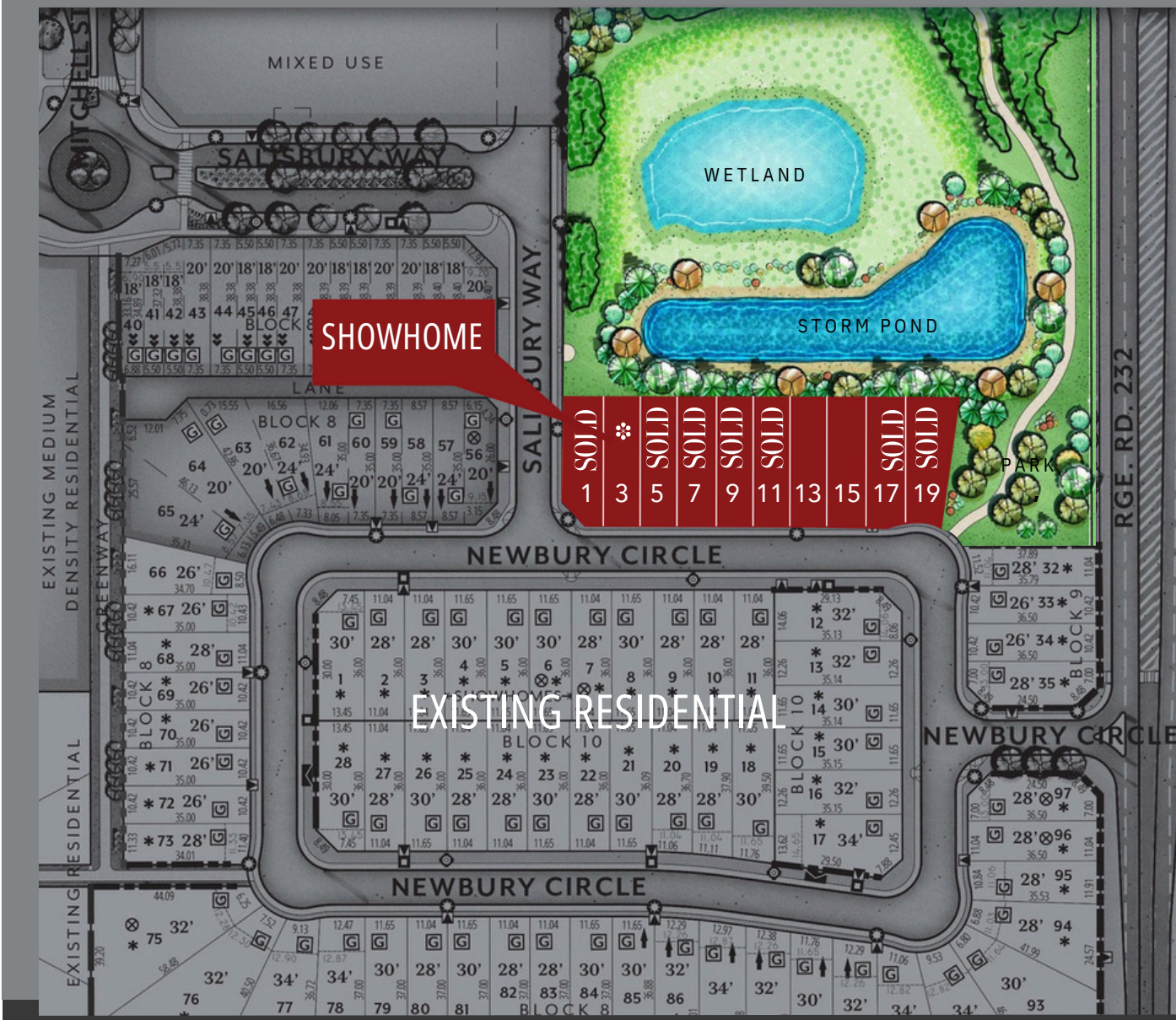
A modern bungalow house with a dark grey roof and two large garage doors, set against a backdrop of trees and a sunset sky. The house features a combination of dark grey horizontal siding and light grey stone-textured pillars. The garage doors are dark grey with horizontal panels and small windows at the top. The sky is a mix of purple, pink, and blue, suggesting dusk or dawn. Several tall evergreen trees are visible behind the house, and some low-lying shrubs are in the foreground.

SALISBURY VILLAS

*Exceptional bungalow living
in Sherwood Park*

COMMUNITY

Salisbury Village is one of Sherwood Park's most sought-after new communities. This modern community offers homebuyers a unique lifestyle opportunity south of Wye Road. Trails, parks, and playgrounds throughout Salisbury Village contribute to the active, outdoor lifestyle homeowners are looking for. The nearby amenities along Wye Road – including a Starbucks, Brown's Social House, financial institutions, and other retail establishments – mean you never have to stray far from home for all your wants and needs. Easy access into downtown Edmonton allows residents to experience a convenient suburban lifestyle close to the city and to the country.



ARCHITECTURE



PRAIRIE MODERN

Discover the epitome of architectural style with Prairie Modern homes in Salisbury Village. Characterized by their distinctive low-pitched roofs and sleek facades, these homes redefine sophistication. Clean lines seamlessly merge with contemporary accents, including sleek metal finishes, resulting in a perfect synthesis of classic and modern elements. The interplay of design elements creates a serene and elegant ambiance, making Prairie Modern homes an ideal choice for those seeking a harmonious blend of timeless and contemporary living.



CONTEMPORARY MODERN

Contemporary Modern homes serve as a cornerstone of design in Salisbury Village. This architectural style is defined by clean lines, sleek surfaces, and eye-catching sloping rooflines. Abundant natural light floods the interiors through large windows, framing the community's natural setting like a picturesque artwork on the wall. Meticulous attention to detail and the use of high-quality materials contribute to the elevated and elegant look and feel of each home, ensuring a distinctive and refined living experience.

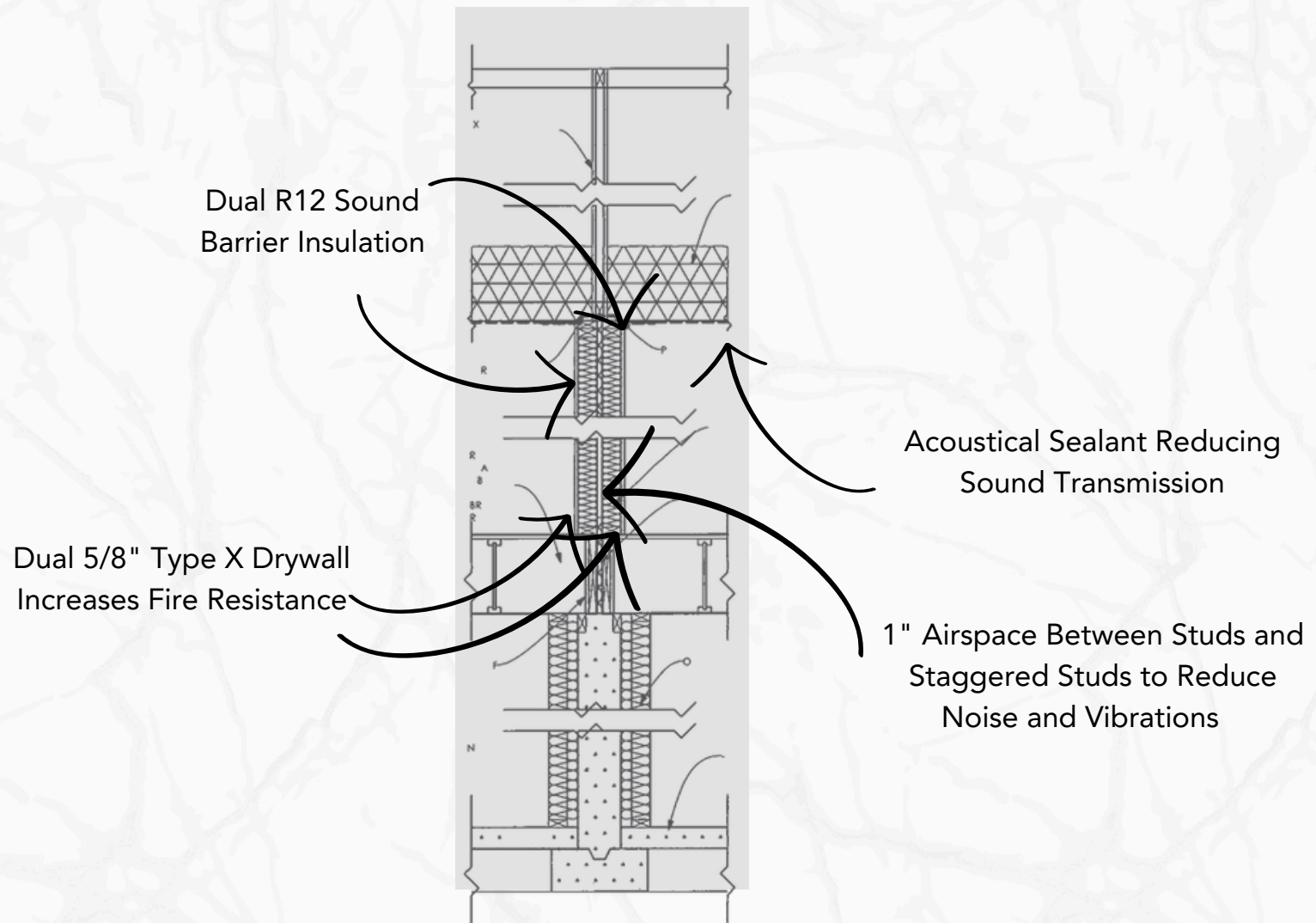
FEATURES

- Turn-key with basement development, landscaping, rear deck, fencing, and appliances included.
- The only homes in the final phase of Salisbury Village backing the wetlands.
- Raised 12' great room ceilings or 14' vaulted ceilings (option depends on elevation style).
- Engineered hardwood floors throughout the main living spaces and primary bedroom.
- Ceramic tile floors in ensuite, laundry room, and mudroom.
- Entertainment-sized basement rec room with laminate floors, and wet bar with sink and bar fridge.
- Double front doors.
- 22'x21' Garage with floor drain.
- No Condo or HOA fees.



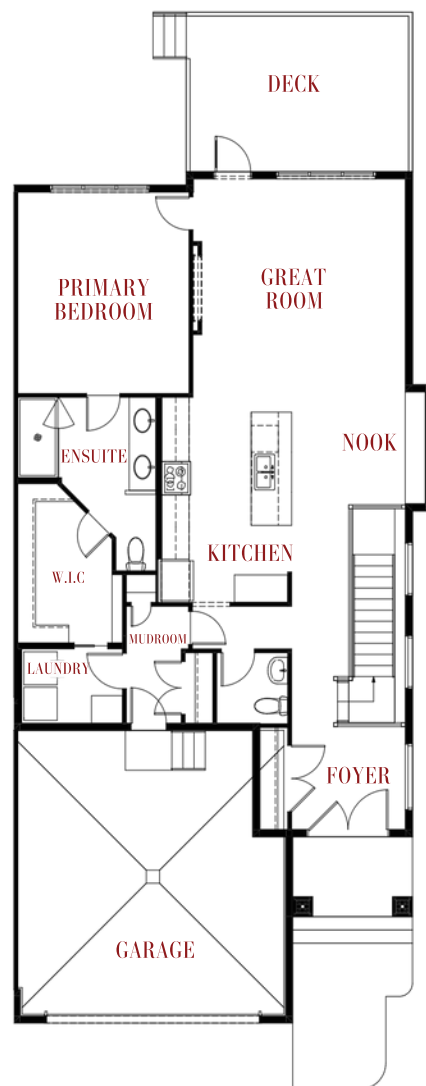
PARTY WALL DETAILS

Kimberley's party wall detail offers homeowners peace of mind by incorporating construction techniques designed to minimize noise and vibrations along shared walls, ensuring a tranquil living environment.



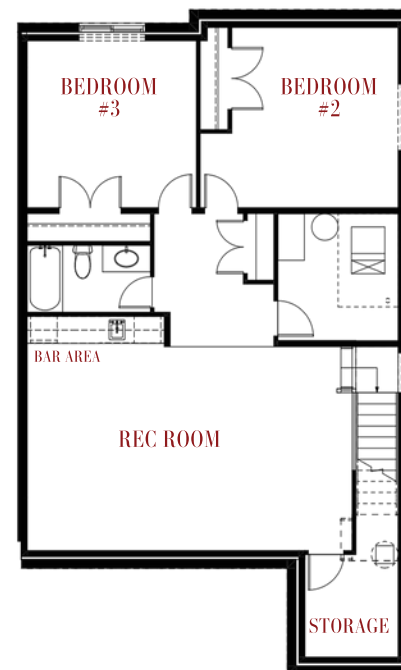
THE SALISBURY VILLAS SHOWHOME

2,366 Sq.Ft. | 3 Bedrooms | 2.5 Bathrooms



MAIN FLOOR

1,357 Sq.Ft.



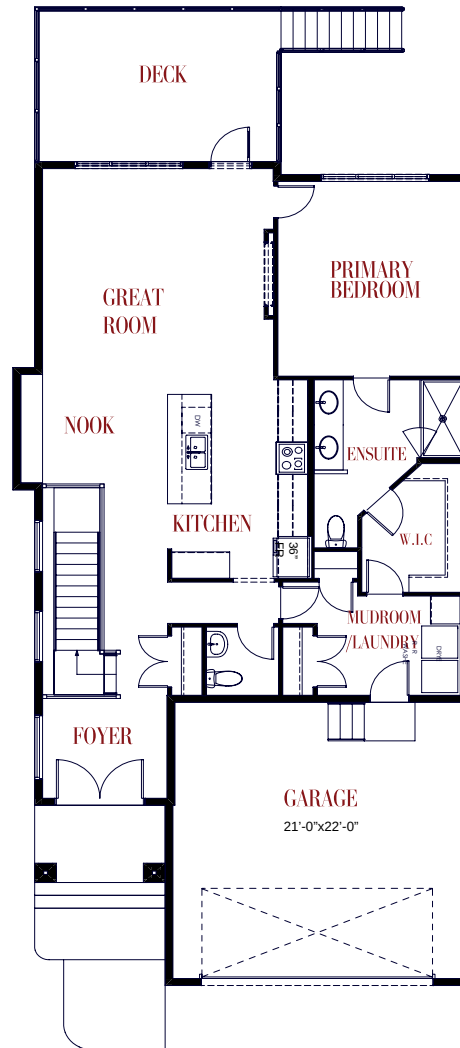
LOWER FLOOR

1,009 Sq.Ft.



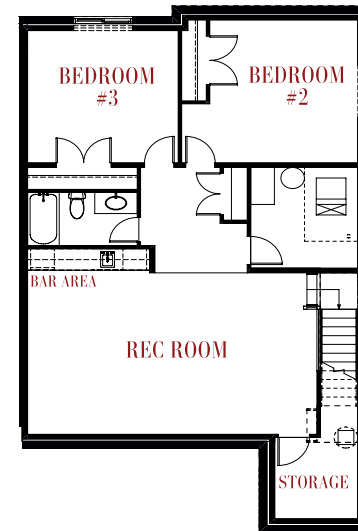
THE PRESLEY

2,348 Sq.Ft. | 3 Bedrooms | 2.5 Bathrooms



MAIN FLOOR

1,339 Sq.Ft.



LOWER FLOOR

1,009 Sq.Ft.





BUILDWITHKIMBERLEY.CA

(780) 809-5025