

Model Name:

JADE

Style of the home:

**MODERN
FARMHOUSE**

3 bedrooms 2.5 bathrooms on the main and upper floors.

Open to above foyer.

Basement developed with 2 bedrooms & 1 full bathroom.

Oak finishing package upgrade with black & chrome hardware throughout home.

Ample lighting package through entire home.



24 SUNVALLEY VIEW, COCHRANE

2273 SQ.FT

BASEMENT: 775 SQ.FT

Developed basement.
Separate entrance to the basement.
2 large bedrooms.
1 full bathroom
Wet bar with base cabinets.
Approximately 9' ceiling

MAIN FLOOR: 1056 SQ.FT

Open to above foyer.
Main floor 9' ceiling and 8' doors.
Main floor- Hardwood flooring with hardwood vents.
Walk-through pantry with MDF Shelving.
Mudroom with built in bench and hooks.
Dream Kitchen with built in wall oven & Microwave, 30" gas cooktop, 36" fridge freezer, & dishwasher.
Custom kitchen cabinets and quartz countertops with Double Waterfall Features
Kitchen Island with flushed eating bar and 6" drop ceiling over the kitchen Island.
Family area with built in gas fireplace.
Main floor flex room with barn door and black hardware.

Sliding patio door.
Over 100 sq.ft. of deck.
Gas rough in for BBQ on the deck.
Double car garage.

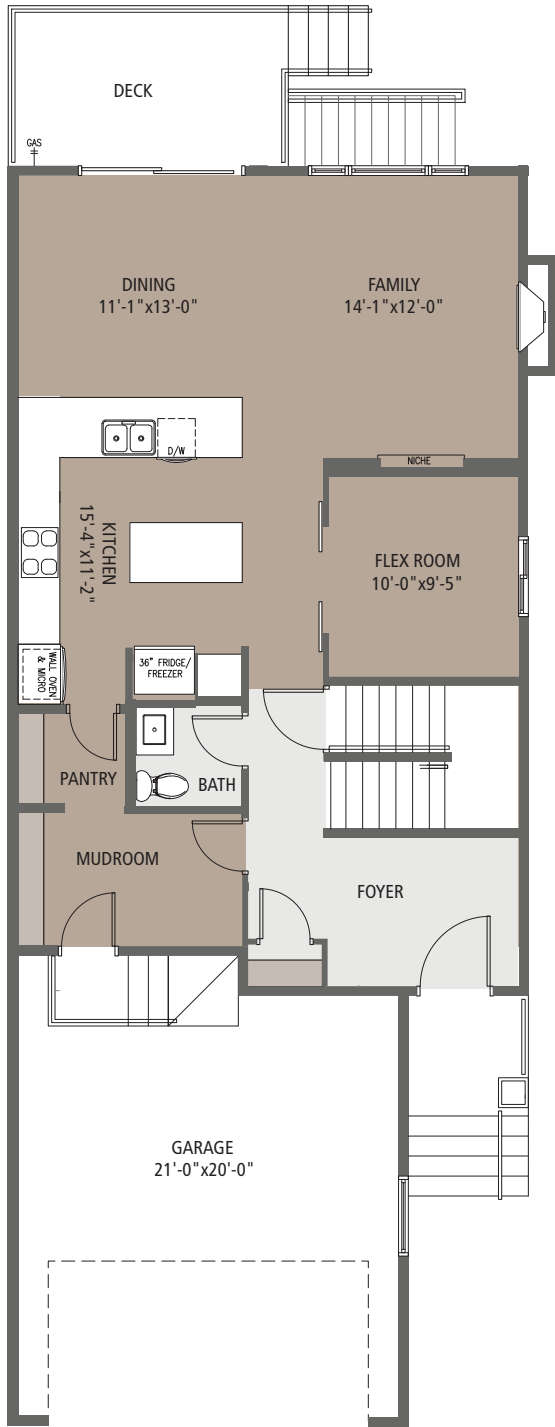
UPPER FLOOR: 1217 SQ.FT.

A total of 3 bedrooms, 2 bathrooms, laundry room, and a bonus room on the upper floor.
Primary bedroom with tray ceiling.
Primary bedroom with walk-in closet complete with MDF shelving.
Ensuite bathroom comes with a double vanity, jetted tub, shower with tile base, tiled surround, bench, and 10 mil glass doors.
Carpet in bedrooms and upper floor common/bonus area.
MDF shelving in all closets on the upper floor.
Laundry room with sink and base cabinetry.
Bonus room with vaulted ceiling.

EXTERIOR:

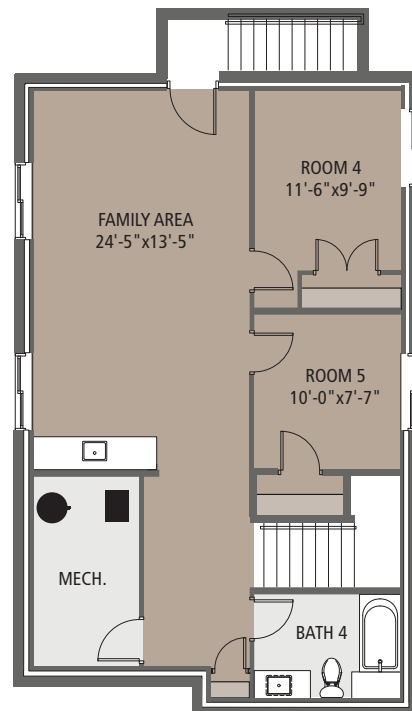
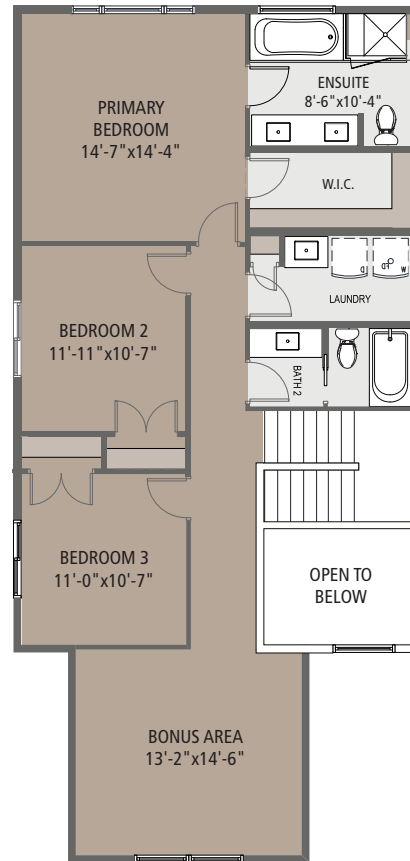
Fiber cement siding on the house.
Smooth Panels.
Rustic Ledge Osceola – stone masonry.

Floorplans are illustrative for marketing purposes. Final plans may differ.
Contact a Green Cedar Representative for more information.



MAIN FLOOR: 1056 SQ.FT

UPPER FLOOR: 1217 SQ.FT.



BASEMENT: 775 SQ.FT

Model Name:

JADE

Style of the home:

**WESTERN
PRAIRIE**

**3 bedrooms & 2.5 bathrooms
on the main and upper floors.**

Open to above foyer.

**Basement developed with 2
bedrooms & 1 full bathroom.**

**Oak finishing package upgrade
with Black & Polished Chrome
hardware.**

**Ample lighting package Through
Entire home.**



THE EXTERIOR PHOTO IS FOR ADVERTISEMENT PURPOSES ONLY

20 SUNVALLEY VIEW, COCHRANE

2281 SQ.FT

BASEMENT: 797 SQ.FT

Developed basement.
Separate entrance to the basement.
2 large bedrooms.
1 full bathroom.
Wet bar with base cabinets.
Approximately 9' ceiling..

MAIN FLOOR: 1066 SQ.FT

Open to above foyer.
Main floor 9' ceiling and 8' doors.
Main floor- upgrade to hardwood flooring with hardwood vents.
Customized kitchen cabinets to the ceilings and a walk-through pantry with MDF Shelving.
Mudroom with built in bench and hooks.
Dream Kitchen with built in wall oven & Microwave, 30" gas cooktop, 36" fridge freezer, & 24" dishwasher.
Custom kitchen cabinets to the ceiling and quartz countertops with Double Waterfall Features
Kitchen Island with flushed eating bar and 6" drop ceiling over the kitchen Island.
Family area with built in gas fireplace.

Main floor flex room with barn door and black hardware.
Sliding patio door.
Over 100 sq.ft. of deck.
Gas rough in for BBQ on the deck.
Double car garage.

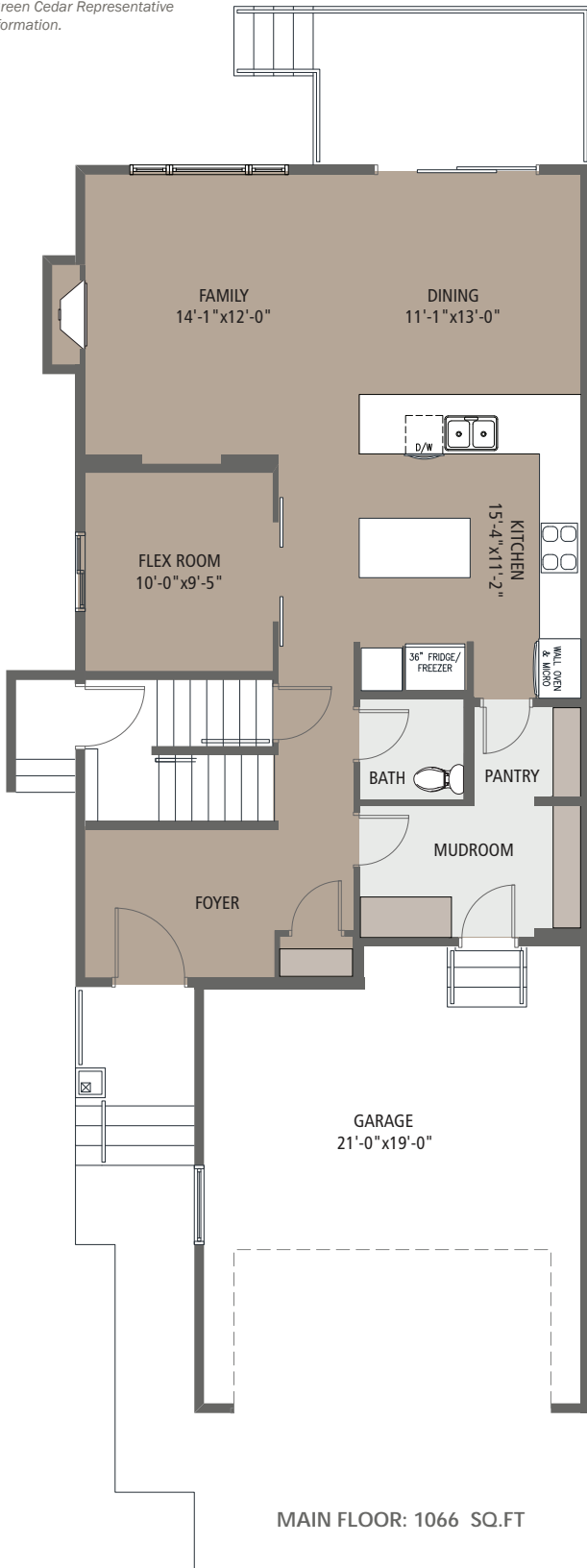
UPPER FLOOR: 1217 SQ.FT.

A total of 3 bedrooms, 2 full bathrooms, laundry room, and a bonus room on the upper floor.
Primary bedroom & bonus room with tray ceiling.
Primary bedroom with walk-in closet complete with MDF shelving.
Ensuite bathroom comes with a double vanity, jetted tub, shower with tile base, tiled surround, bench, and 10 mil glass doors.
Carpet in bedrooms and upper floor common/bonus area.
MDF shelving in all closets on the upper floor.
Laundry room with sink, Quartz top, and base cabinetry.
Feature wall displayed in large Bonus room.

EXTERIOR:

Fiber cement siding on the house.
(Hardie Board)
Exposed Aggregate Concrete Driveway.
Shadow Ledge Ironwood – stone masonry.

Floorplans are illustrative for marketing purposes. Final plans may differ. Contact a Green Cedar Representative for more information.



UPPER FLOOR: 1217 SQ.FT.

