

The Walnut 22

AVAILABLE ELEVATIONS



FRONT ELEVATION **PRAIRIE**



FRONT ELEVATION **CRAFTSMAN**



FRONT ELEVATION **MODERN FARMHOUSE**



FRONT ELEVATION **MODERN**

Please confirm with our Sales Team which elevations are available in your desired community. All elevations, floorplans and dimensions are for illustrative purposes only and are intended to convey a concept and visualization of our homes. They are subject to modifications at any time and are not to be used for contractual purposes. Square footage noted reflects Residential Measurement Standard.



crystalcreekhomes.ca



The Walnut 22

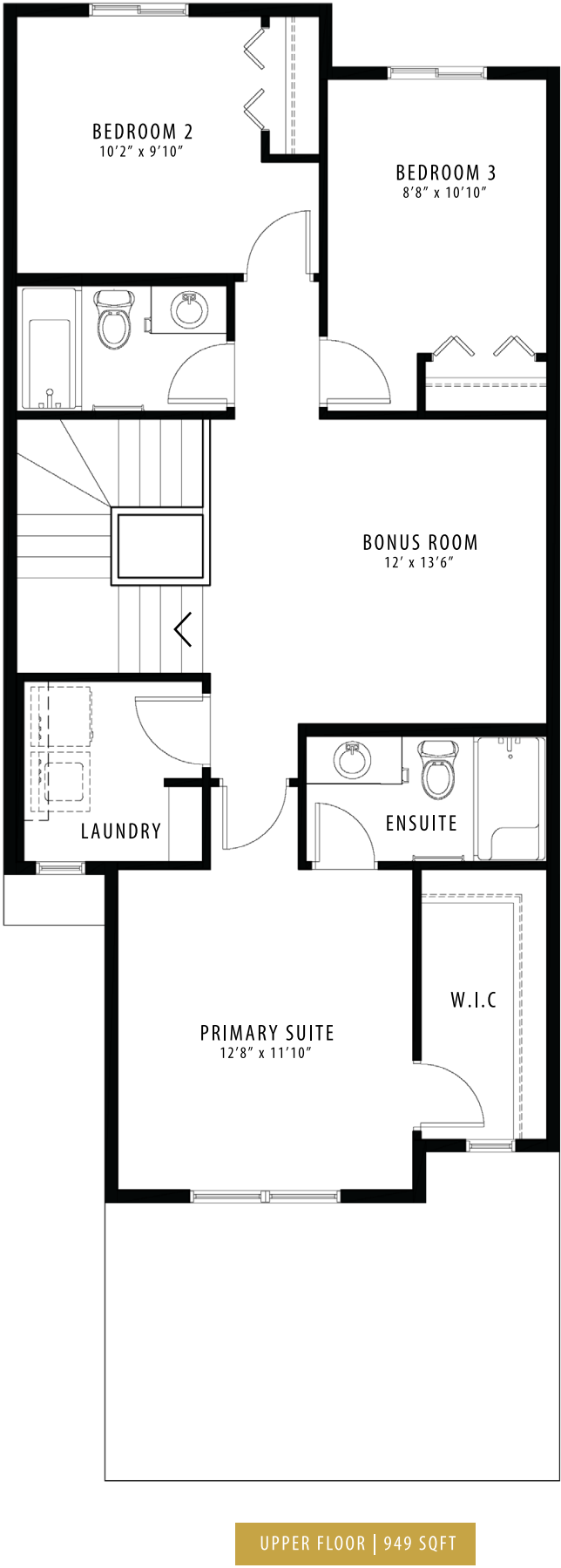
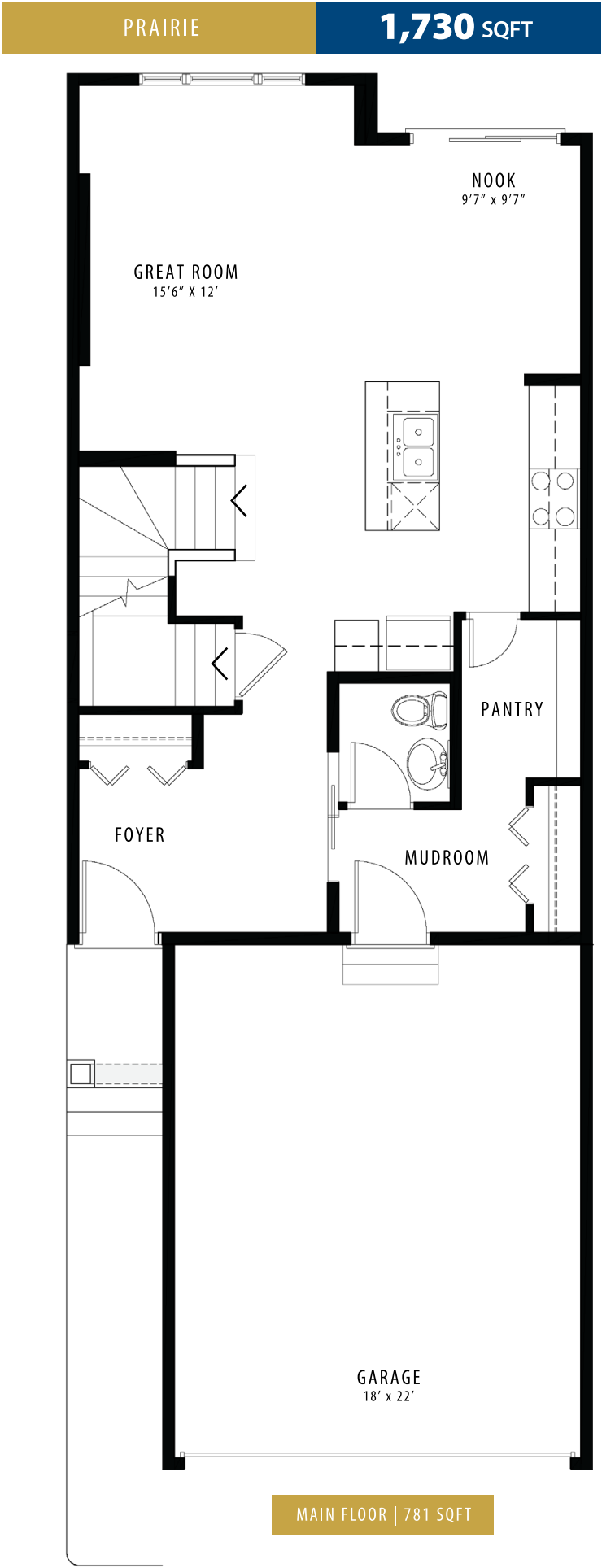
PRAIRIE

1,730 SQFT

3 BEDROOMS | 2.5 BATHROOMS | 2 CAR GARAGE

crystalcreekhomes.ca

The Walnut 22



The Hazel 28

AVAILABLE ELEVATIONS



FRONT ELEVATION **PRAIRIE**



FRONT ELEVATION **CRAFTSMAN**



FRONT ELEVATION **MODERN FARMHOUSE**



FRONT ELEVATION **MODERN**

Please confirm with our Sales Team which elevations are available in your desired community. All elevations, floorplans and dimensions are for illustrative purposes only and are intended to convey a concept and visualization of our homes. They are subject to modifications at any time and are not to be used for contractual purposes. Square footage noted reflects Residential Measurement Standard.



crystalcreekhomes.ca



The Hazel 28

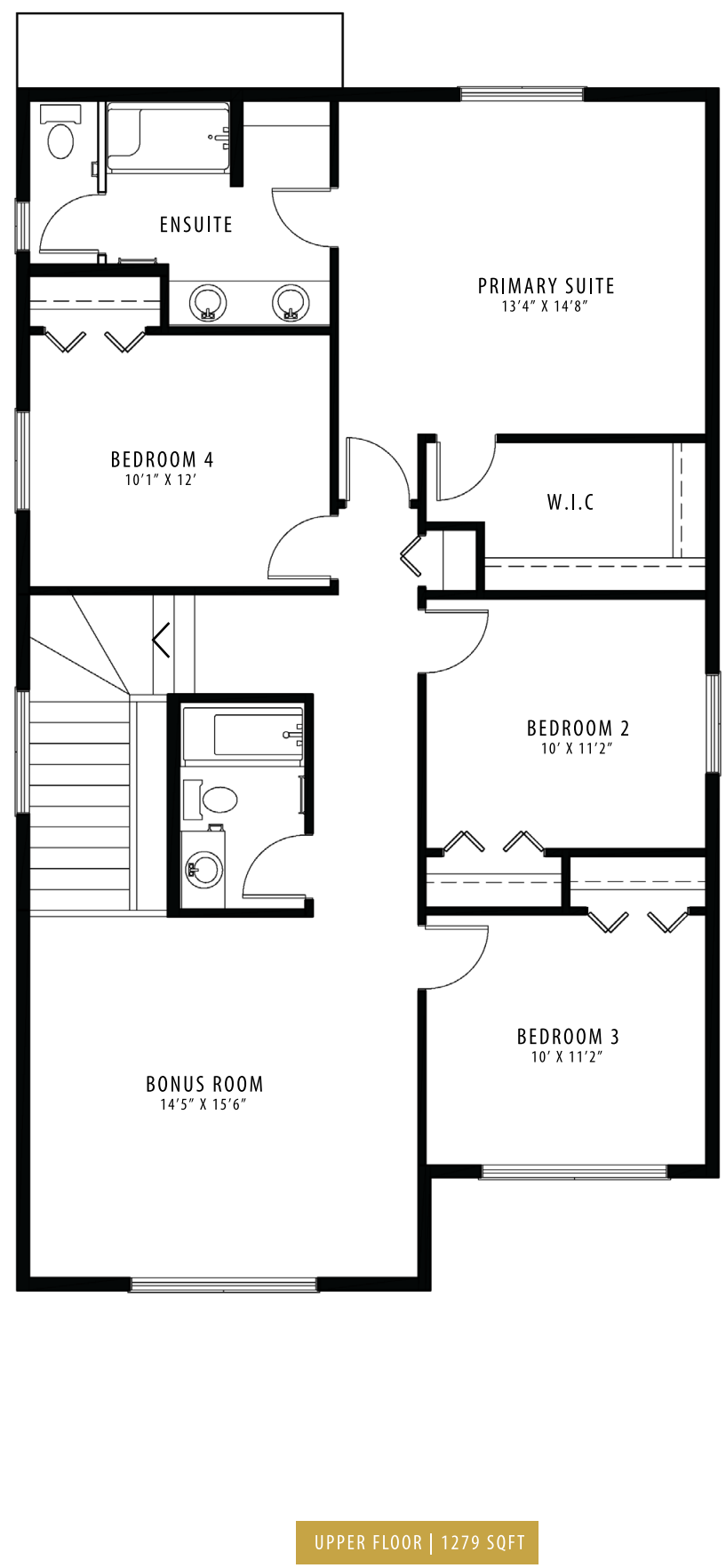
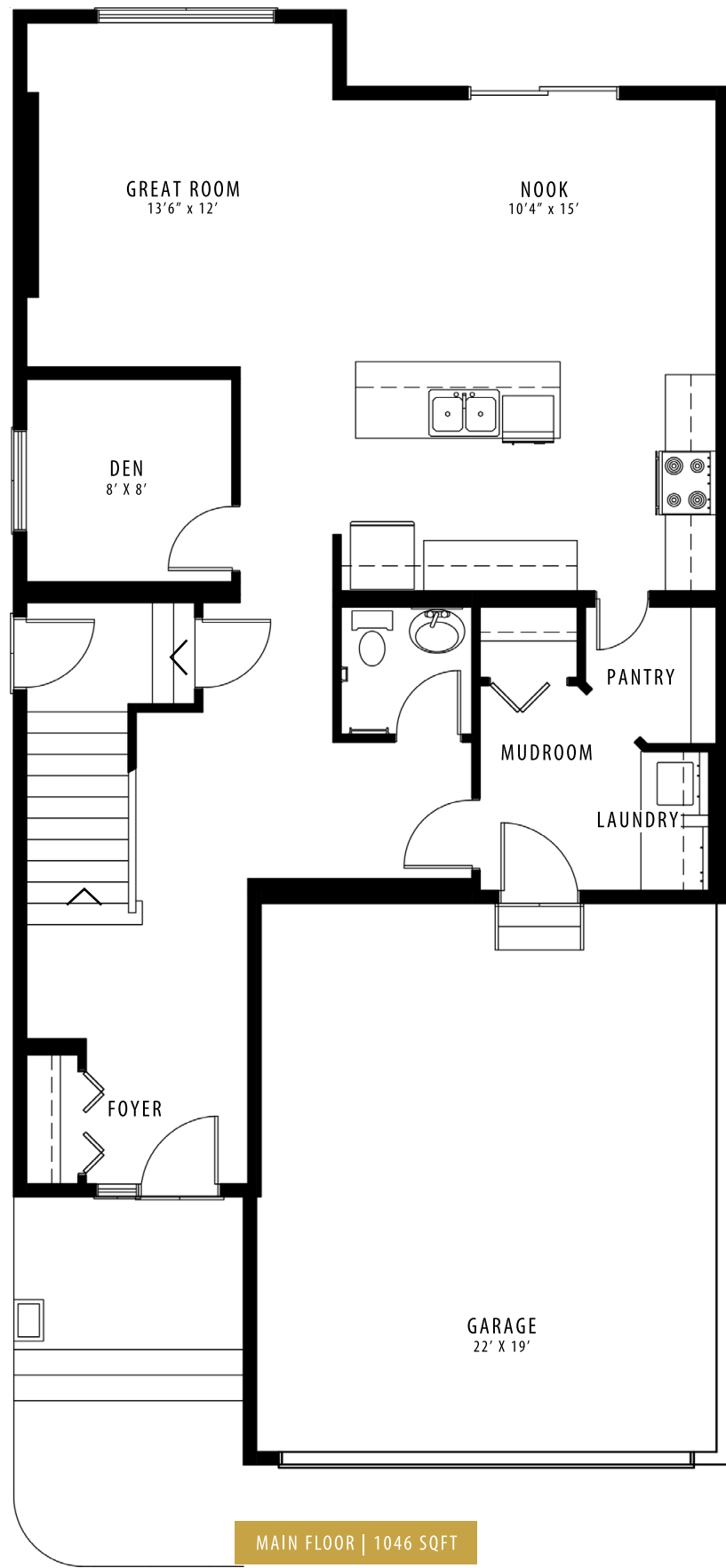
MODERN FARMHOUSE **2,325 SQFT**

4 BEDROOMS | 2.5 BATHROOMS | 2 CAR GARAGE

crystalcreekhomes.ca

The Hazel 28

MODERN FARMHOUSE 2,325 SQFT



The Athena 20

AVAILABLE ELEVATIONS



FRONT ELEVATION **PRAIRIE**



FRONT ELEVATION **CRAFTSMAN**



FRONT ELEVATION **MODERN FARMHOUSE**

Please confirm with our Sales Team which elevations are available in your desired community. All elevations, floorplans and dimensions are for illustrative purposes only and are intended to convey a concept and visualization of our homes. They are subject to modifications at any time and are not to be used for contractual purposes. Square footage noted reflects Residential Measurement Standard.



crystalcreekhomes.ca



The Athena 20

PRAIRIE **1,818 SQFT**

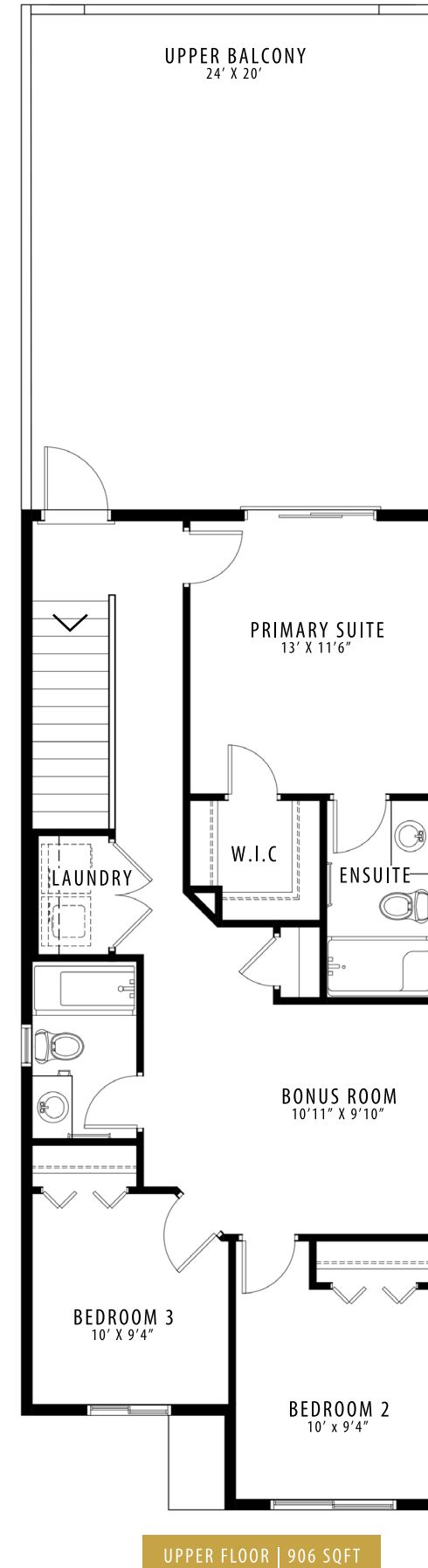
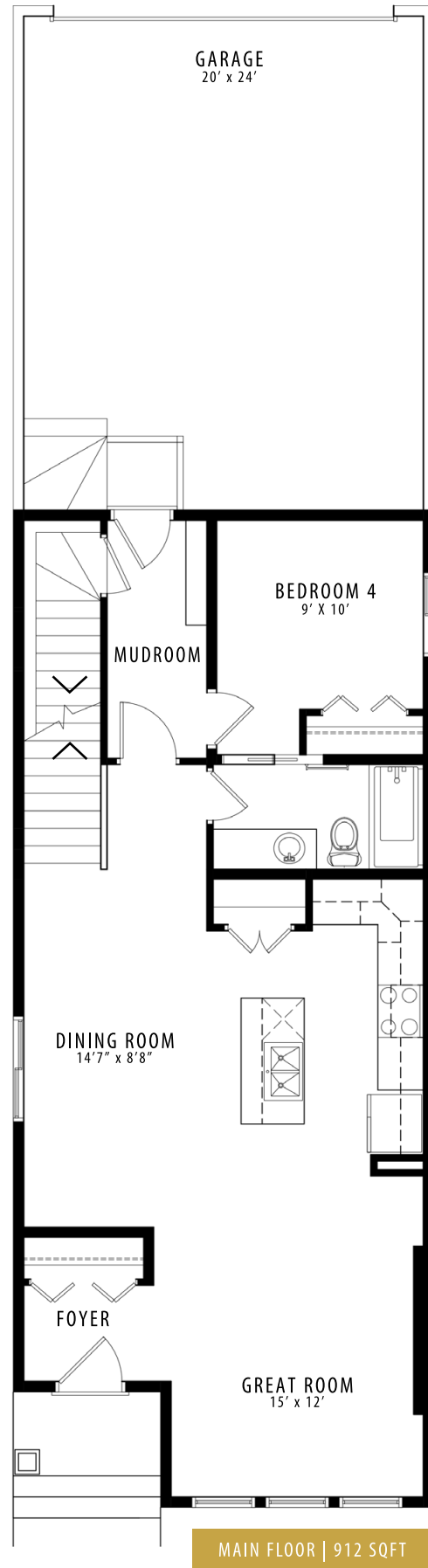
4 BEDROOMS | 3 BATHROOMS | 2 CAR GARAGE

crystalcreekhomes.ca

The Athena 20

PRAIRIE

1,818 SQFT



The Orchid 20

AVAILABLE ELEVATIONS



FRONT ELEVATION CRAFTSMAN



FRONT ELEVATION PRAIRIE



FRONT ELEVATION MODERN



FRONT ELEVATION MODERN FARMHOUSE



FRONT ELEVATION QUAIN T QUEBECOIS

Please confirm with our Sales Team which elevations are available in your desired community. All elevations, floorplans and dimensions are for illustrative purposes only and are intended to convey a concept and visualization of our homes. They are subject to modifications at any time and are not to be used for contractual purposes. Square footage noted reflects Residential Measurement Standard.



crystalcreekhomes.ca



The Orchid 20

CRAFTSMAN 1,810 SQFT

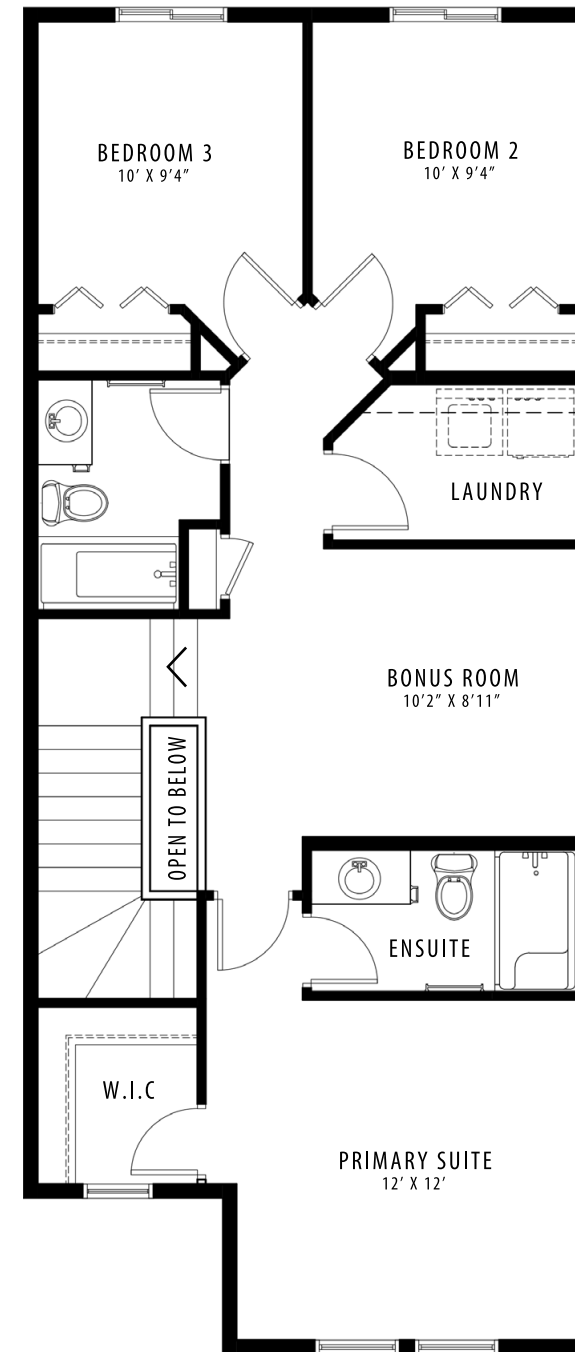
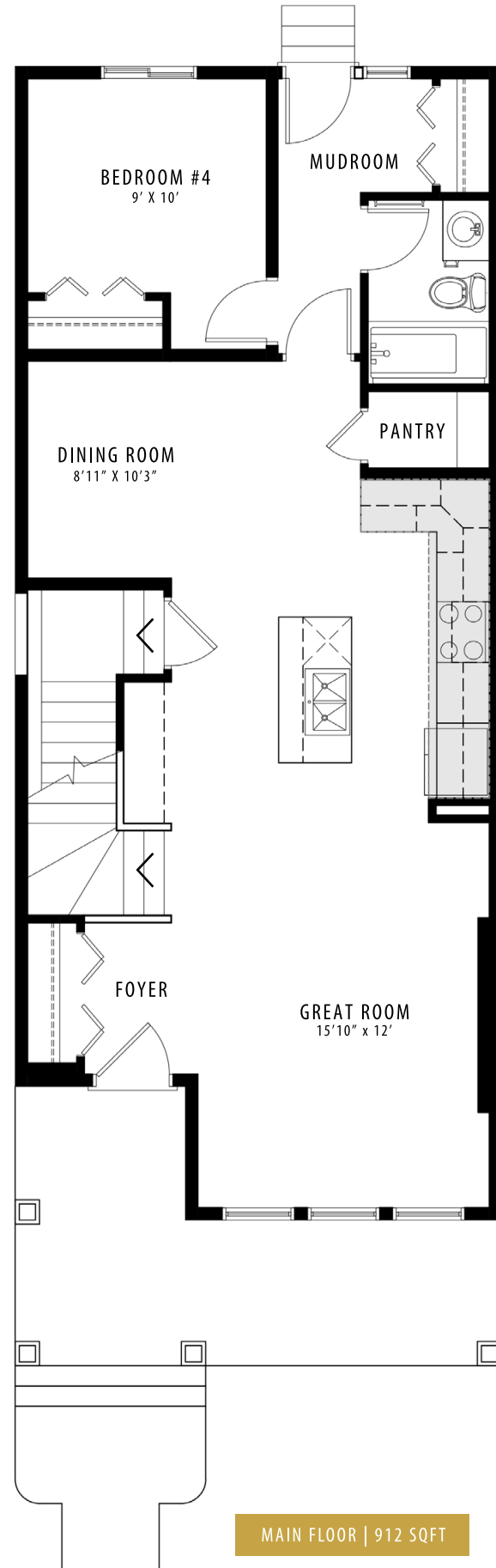
4 BEDROOMS | 3 BATHROOMS

crystalcreekhomes.ca

The Orchid 20

CRAFTSMAN

1,810 SQFT



The Apollo 20

AVAILABLE ELEVATIONS



FRONT ELEVATION PRAIRIE

Please confirm with our Sales Team which elevations are available in your desired community. All elevations, floorplans and dimensions are for illustrative purposes only and are intended to convey a concept and visualization of our homes. They are subject to modifications at any time and are not to be used for contractual purposes. Square footage noted reflects Residential Measurement Standard.



crystalcreekhomes.ca



The Apollo 20

PRAIRIE 1,756 SQFT

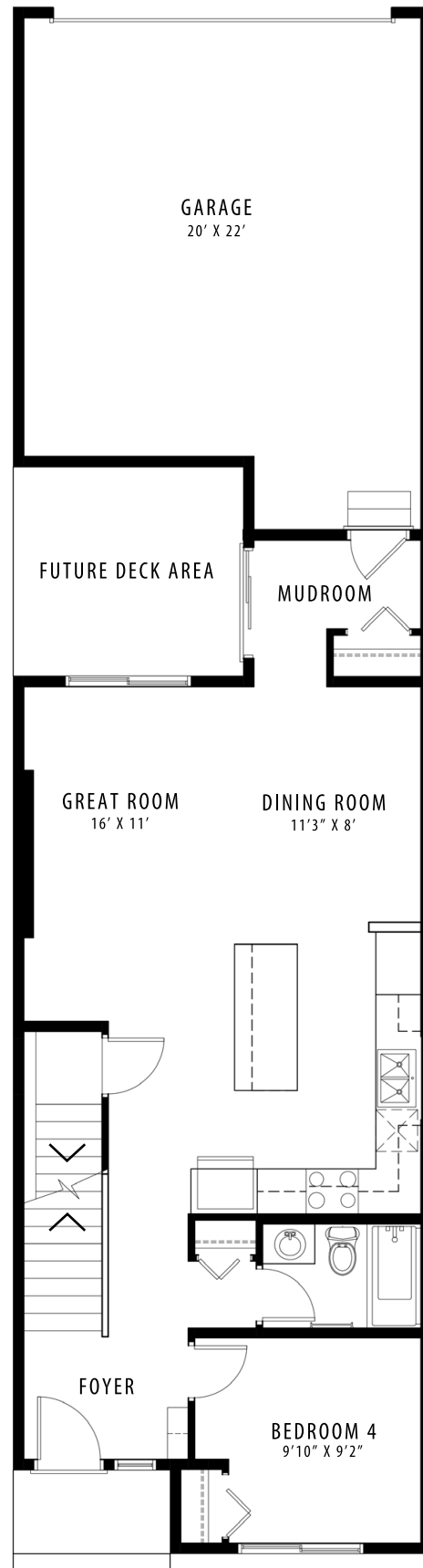
4 BEDROOMS | 3 BATHROOMS | 2 CAR GARAGE

crystalcreekhomes.ca

The Apollo 20

PRAIRIE

1,756 SQFT



MAIN FLOOR | 873 SQFT



UPPER FLOOR | 883 SQFT

The Dahlia 18

AVAILABLE ELEVATIONS



FRONT ELEVATION

PRAIRIE



FRONT ELEVATION

CRAFTSMAN



FRONT ELEVATION

MODERN FARMHOUSE



FRONT ELEVATION

QUAINT QUEBECOIS

Please confirm with our Sales Team which elevations are available in your desired community. All elevations, floorplans and dimensions are for illustrative purposes only and are intended to convey a concept and visualization of our homes. They are subject to modifications at any time and are not to be used for contractual purposes. Square footage noted reflects Residential Measurement Standard.



crystalcreekhomes.ca



The Dahlia 18

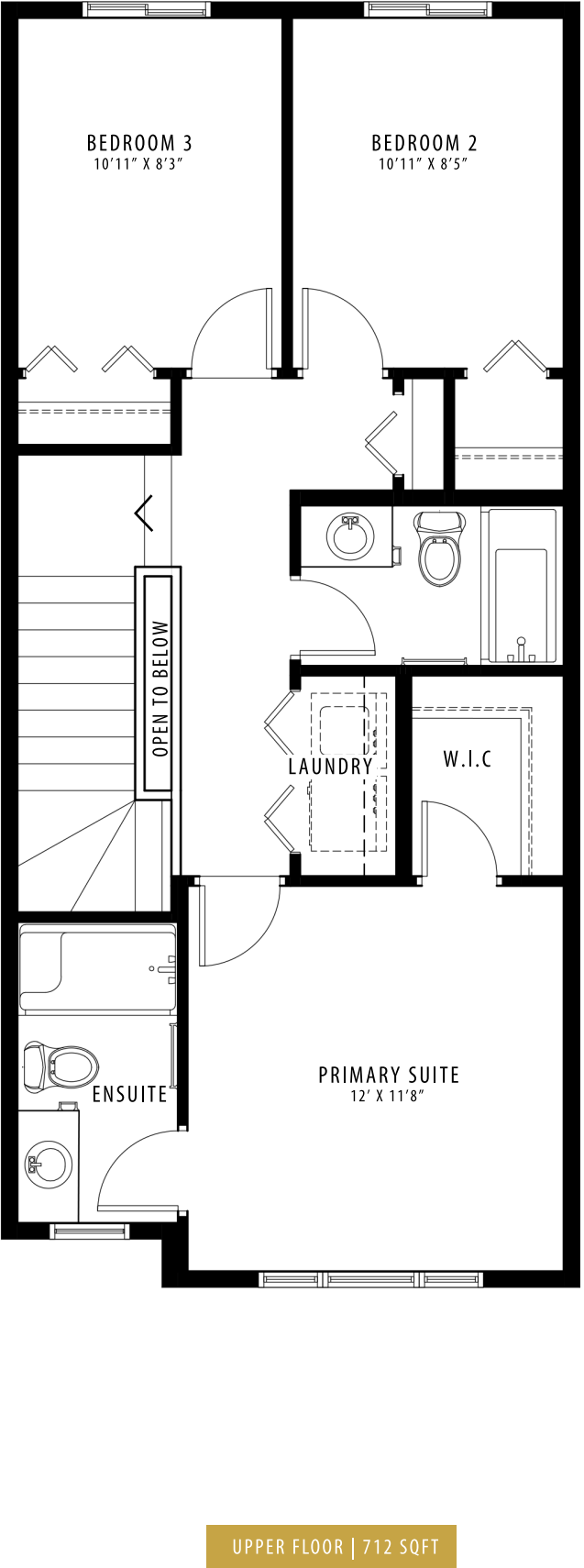
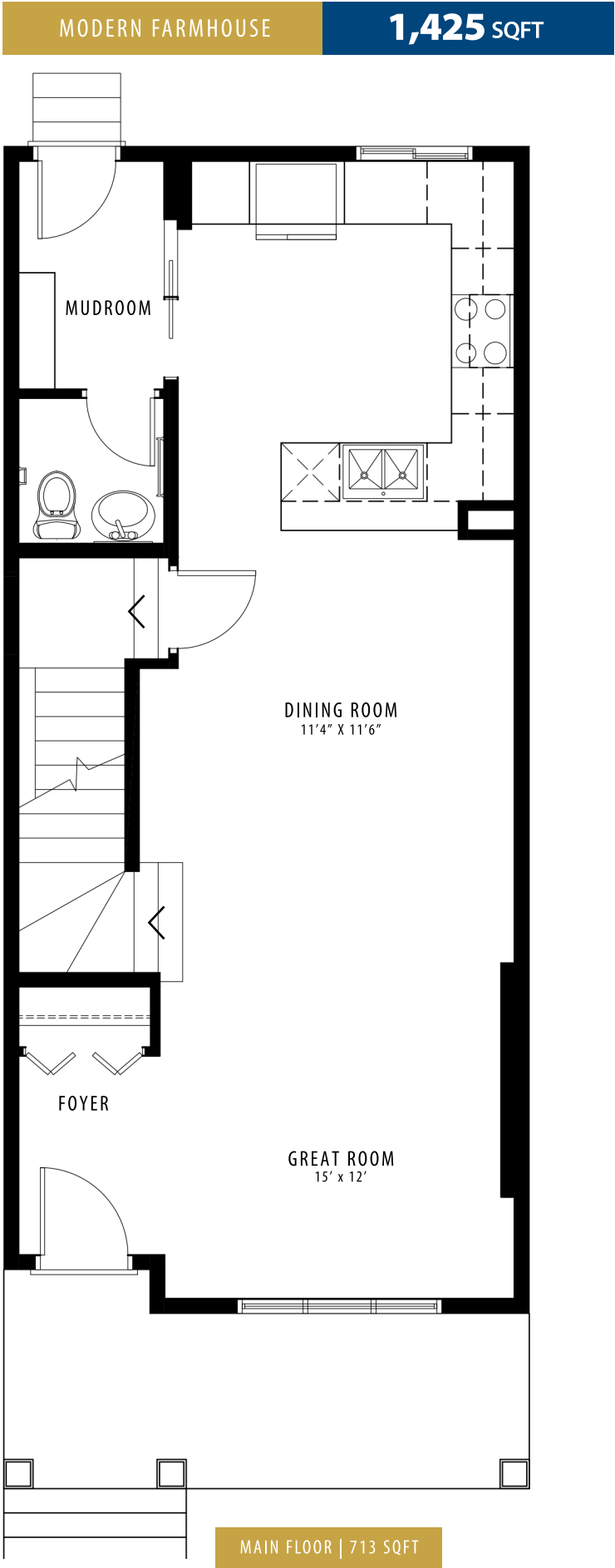
MODERN FARMHOUSE

1,425 SQFT

3 BEDROOMS | 2.5 BATHROOMS

crystalcreekhomes.ca

The Dahlia 18



The Pine 22

AVAILABLE ELEVATIONS



FRONT ELEVATION PRAIRIE



FRONT ELEVATION CRAFTSMAN



FRONT ELEVATION MODERN FARMHOUSE



FRONT ELEVATION MODERN

Please confirm with our Sales Team which elevations are available in your desired community. All elevations, floorplans and dimensions are for illustrative purposes only and are intended to convey a concept and visualization of our homes. They are subject to modifications at any time and are not to be used for contractual purposes. Square footage noted reflects Residential Measurement Standard.



crystalcreekhomes.ca



The Pine 22

MODERN 1,755 SQFT

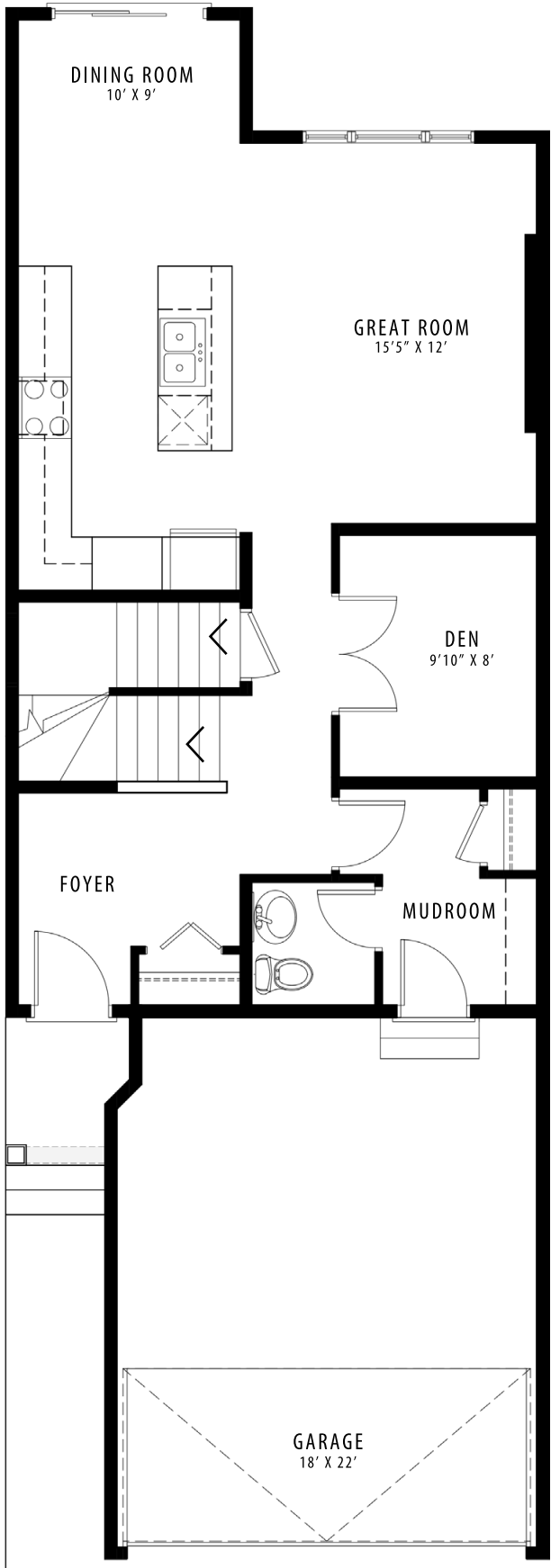
3 BEDROOMS | 2.5 BATHROOMS | 2 CAR GARAGE

crystalcreekhomes.ca

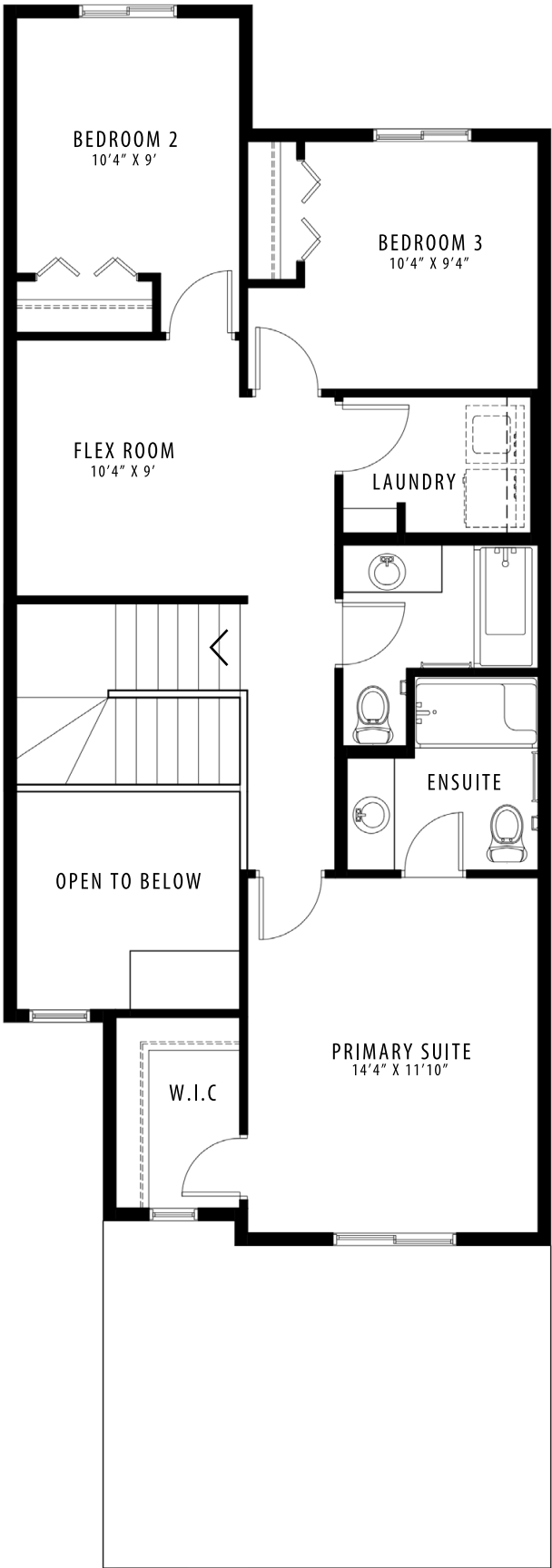
The Pine 22

MODERN

1,755 SQFT



MAIN FLOOR | 842 SQFT



UPPER FLOOR | 913 SQFT

The Maple 24

AVAILABLE ELEVATIONS



FRONT ELEVATION **PRAIRIE**



FRONT ELEVATION **CRAFTSMAN**



FRONT ELEVATION **MODERN FARMHOUSE**



FRONT ELEVATION **MODERN**

Please confirm with our Sales Team which elevations are available in your desired community. All elevations, floorplans and dimensions are for illustrative purposes only and are intended to convey a concept and visualization of our homes. They are subject to modifications at any time and are not to be used for contractual purposes. Square footage noted reflects Residential Measurement Standard.



crystalcreekhomes.ca



The Maple 24

CRAFTSMAN **2,006 SQFT**

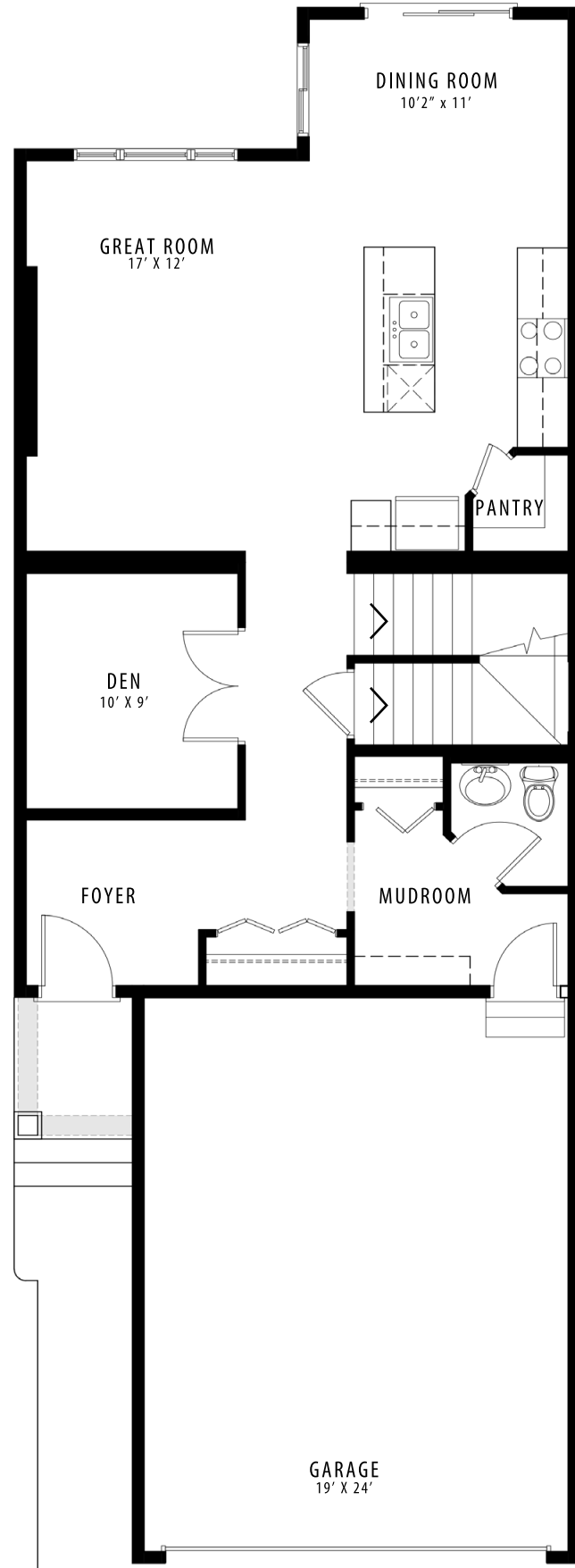
3 BEDROOMS | 2.5 BATHROOMS | 2 CAR GARAGE

crystalcreekhomes.ca

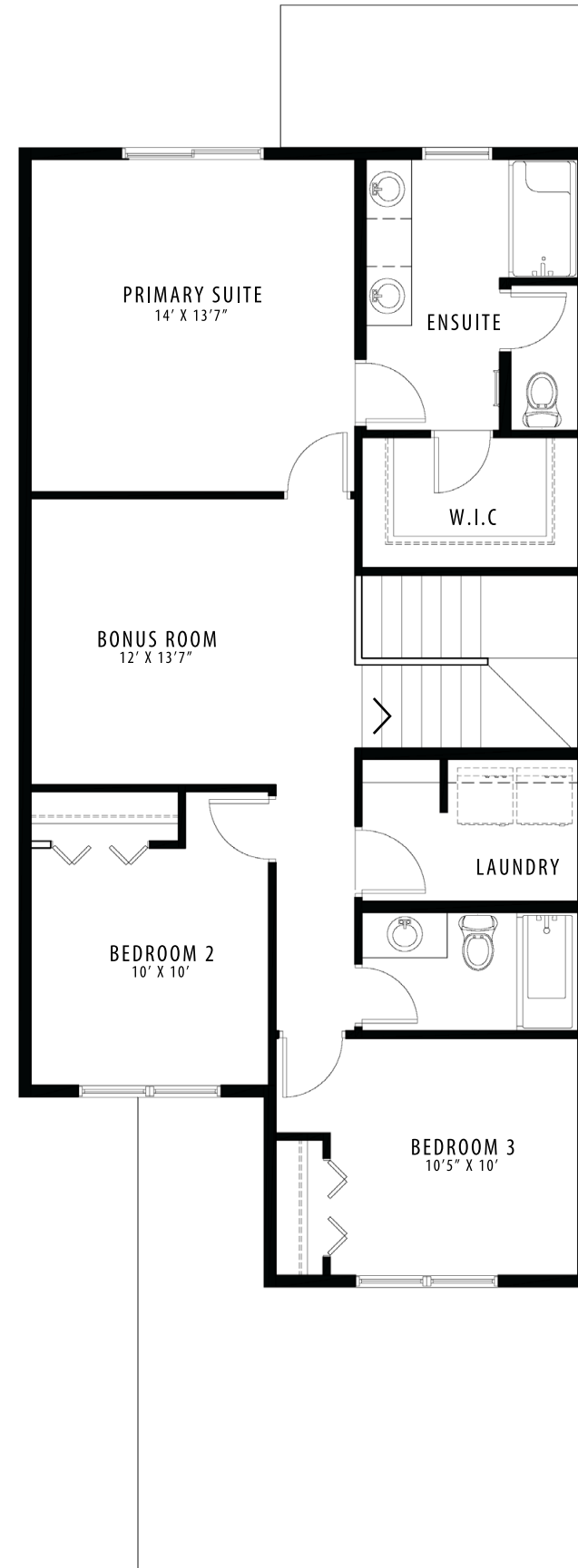
The Maple 24

CRAFTSMAN

2,006 SQFT



MAIN FLOOR | 936 SQFT



UPPER FLOOR | 1070 SQFT