
 3 Bedrooms

 2½ Bathrooms

 Double Garage

# THE CAMBRIDGE 28

2443 SQ.FT.

☐ Elements Specification

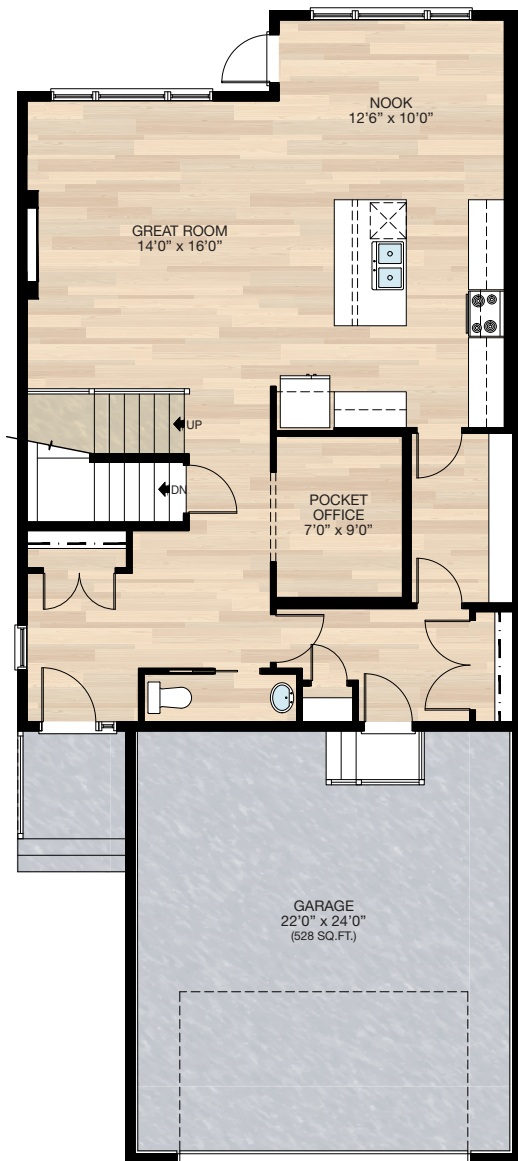
☐ Elite Specification



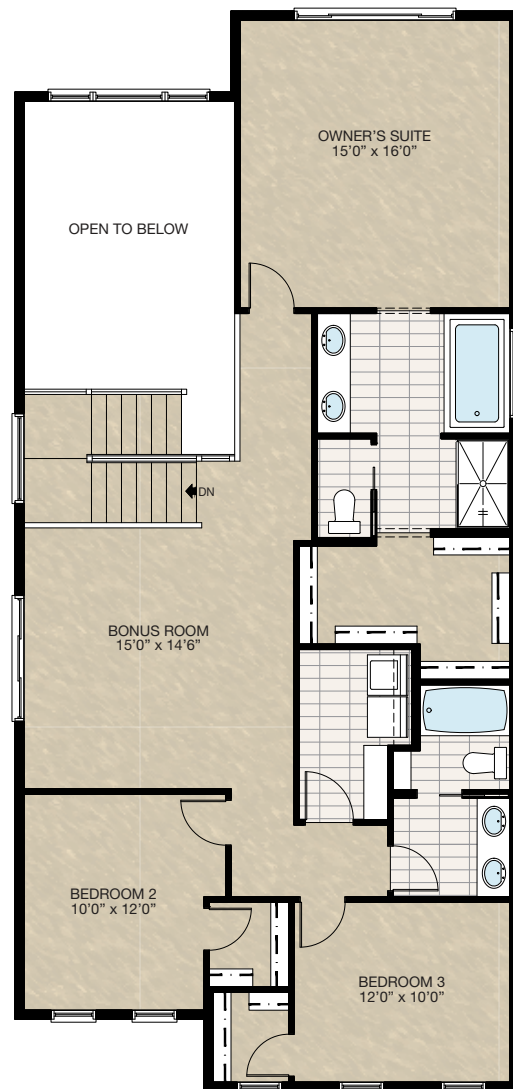
Trico Homes™  
The Heart of Homebuilding®

# STANDARD PLAN

THE  
CAMBRIDGE 28  
2443 SQ.FT.



**MAIN**  
1057 SQ.FT.



**UPPER**  
1386 SQ.FT.

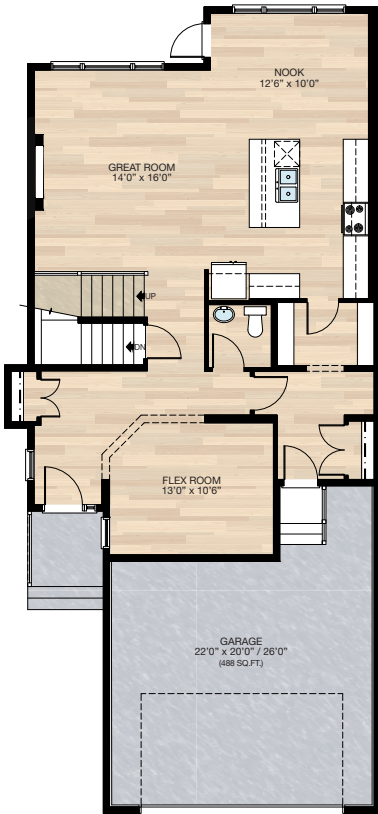


# FEATURED OPTIONS



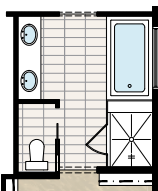
## SELECT-1 FLEX ROOM OPTION

- Add 49 sq.ft.
- Delete pocket office & add flex room
- Relocate half bath
- Cantilever front entry closet
- Add 30" x 72" VSL to flex room
- Revisions to foundation including post location



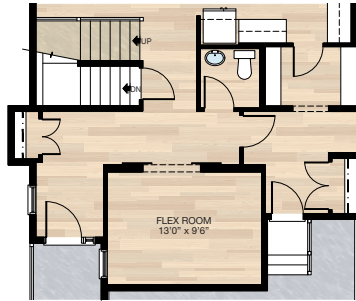
## SELECT-6 GLASS & TILE SHOWER OPTION

- Delete fibreglass shower
- Add 44" x 52" tile & 10mm glass shower
- Extend tub deck 12" for shower bench



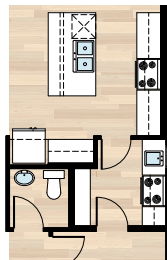
## SELECT-2 BARN DOORS TO FLEX ROOM OPTION

- Must be combined with **SELECT-1**
- Add barn doors to flex room



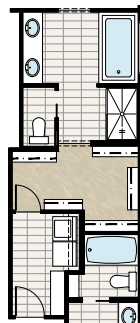
## SELECT-4 SPICE KITCHEN OPTION

- Must be combined with **SELECT-1**
- Delete one section of pantry shelves
- Delete 30" of upper & lower cabinets in kitchen
- Add spice kitchen including range, hoodfan, sink, & upper & lower cabinets
- Add 24" x 40" VSL window
- Delete 2'6" door & add 2'8" door



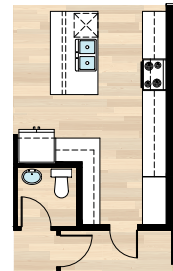
## SELECT-5 ACCESS TO LAUNDRY FROM WIC OPTION

- Delete 28" of closet shelving
- Add 2'4" door
- Add two 3-way switches



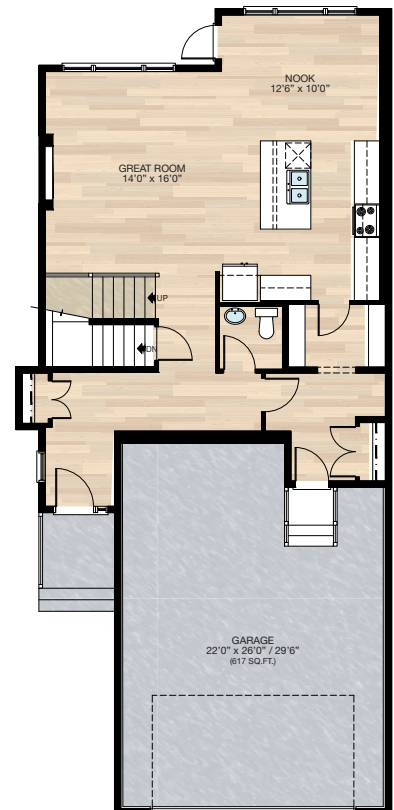
## SELECT-3 KITCHEN OPTION

- Must be combined with **SELECT-1**
- Delete pantry
- Add cabinet pantry
- Additional cabinetry
- Add two pendant lights over the island



## SELECT-7 TANDEM GARAGE OPTION

- Must be combined with **SELECT-1**
- Remove 128 sq.ft. from house
- Revisions to foundation including post location



HARDWOOD

DECK

CARPET

CONCRETE

TILE

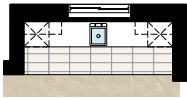
LVP

# FEATURED CAMBRIDGE 28 OPTIONS

THE  
CAMBRIDGE 28  
2443 SQ.FT.

## SELECT-11 BASEMENT WET BAR OPTION

- Includes upper & lower cabinets
- Includes dishwasher, sink & opening for bar fridge
- Flooring is changed to tile
- Two down lights & switch added

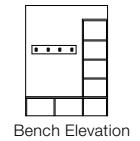
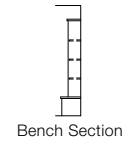


## SELECT-13 BASEMENT DEVELOPMENT OPTION

- 797 Sq.Ft. basement development
- Includes finished basement stairwell
- Delete 2'8" passage door at top of stairwell
- Add 1 riser to stairwell for 9'0" basement ceiling (8'9" headroom clearance)
- Two 60" x 24" windows change to 60" x 36" & 40" x 40"
- Side window location moved due to cantilever above
- Bathroom & furnace location changed slightly
- \*Can only be combined with **SELECT-1**

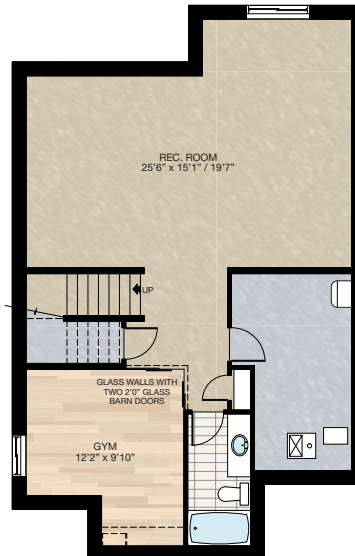
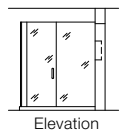
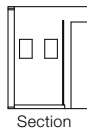
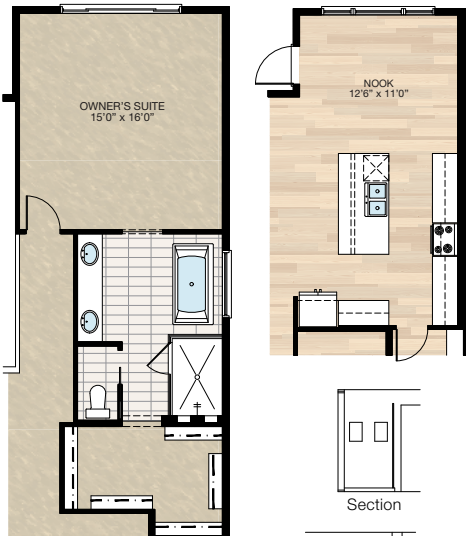
## SELECT-13A MDF BENCH & CUBBIES OPTION

\*Can only be combined with **SELECT-13**



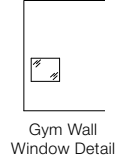
## SELECT-12 NOOK / ENSUITE OPTION

- Extend nook, upper floor & foundation 2'
- This adds 28 sq.ft. to main floor & 32 sq.ft. upper floor
- 12" is added to kitchen upper & lower cabinets as well as the island, 12" is added to the nook
- Upper floor space added to ensuite & walk-in closet
- Delete 60" x 36" soaker tub & 36" x 60" fiberglass shower
- Add 72" x 36" free standing tub & 48" x 72" 10 mm glass & tile shower with niches
- Vanity increased to 8'
- Add light over tub



## SELECT-13B PLAY SPACE OPTION

- Develop 43 sq.ft. under basement stairs
- Includes 27" x 22" interior window
- \*Can only be combined with **SELECT-13**



## SELECT-14 OWNER'S SUITE BALCONY OPTION

- Add 12'0" x 4'6" balcony off Owner's Suite
- Includes vinyl decking, aluminum railing & soffit to u/s of balcony
- Add 2'8" full french door, WP plug & exterior light with switch
- Open to below window moved up to match height of upper floor windows
- Main floor exterior light deleted & 2 down lights added



HARDWOOD

DECK

CARPET

CONCRETE

TILE

LVP

trichomes.com

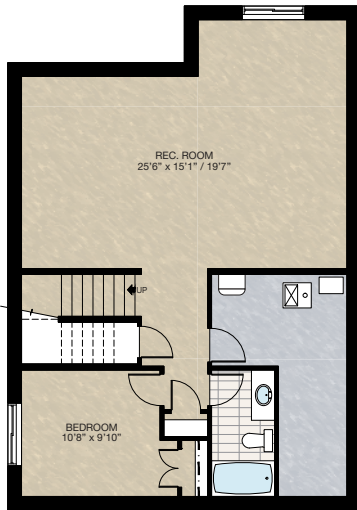


# FEATURED OPTIONS

THE  
**CAMBRIDGE 28**  
2443 SQ.FT.

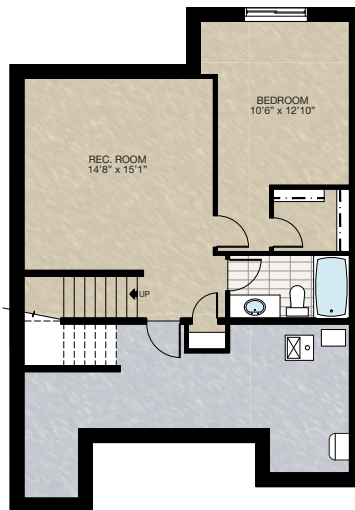
## **SELECT-8** **BASEMENT DEVELOPMENT OPTION 1**

- 752 Sq.Ft. basement development
- Includes finished basement stairwell
- Delete 2'8" passage door at top of stairwell
- Add one riser to stairwell for 9'0" basement ceiling (8'9" headroom clearance)
- Two 60" x 24" windows change to two 60" x 36"
- Cannot be combined with any main floor options



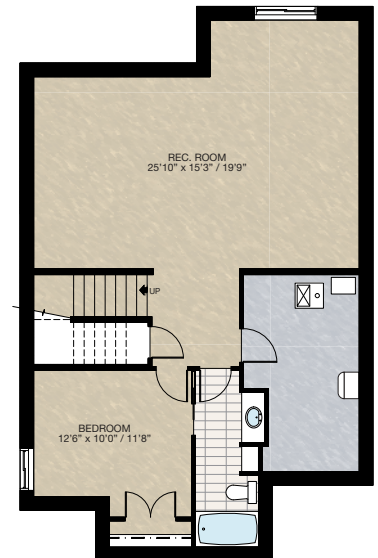
## **SELECT-9** **BASEMENT DEVELOPMENT OPTION 2**

- 559 Sq.Ft. basement development
- Includes finished basement stairwell
- Delete 2'8" passage door at top of stairwell
- Add one riser to stairwell for 9'0" basement ceiling (8'9" headroom clearance)
- Delete one 60" x 24" window
- Change one 60" x 24" window to 60" x 36"
- Can only be combined with **SELECT-7**



## **SELECT-10** **BASEMENT DEVELOPMENT OPTION 3**

- 797 Sq.Ft. basement development
- Includes finished basement stairwell
- Delete 2'8" passage door at top of stairwell
- Add one riser to stairwell for 9'0" basement ceiling (8'9" headroom clearance)
- Two 60" x 24" windows change to 60" x 36" & 40" x 40"
- Can only be combined with **SELECT-1**



Trico Homes is a local home builder, with new single and multi-family homes for sale in Calgary, Okotoks, Chestermere, Cochrane, Airdrie and DeWinton. Offering a great selection of starter, move-up, semi-estate and ultra-estate models in numerous communities, you'll find the house that's just right for you! Look for this model and many others in Ambleton, Arbour Lake, Belmont, Carrington, Chelsea, Cornerbrook, D'Arcy, Dawson's Landing, Glacier Ridge, Hamilton Heights, Homestead, Legacy, Midtown, Pine Creek, Precedence, Rivercrest, Seton, Sirocco, Verona West Townhomes, West83 Townhomes and Wolf Willow.

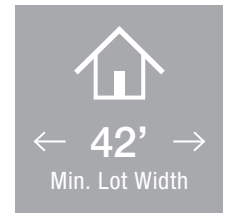



Renderings are artist's conceptions only and may vary by community and lot selection. Prices, floorplans, specifications and dimensions are approximate and are subject to change without notice. E.&O.E. © All rights reserved, including the right of reproduction in the whole or in part without the permission of Trico Homes.


Plan updated as of October 04, 2024.



[tricohomes.com](https://tricohomes.com)



 5 Bedrooms

 4½ Bathrooms

 Triple Garage

# THE SPRINGFIELD

3249 SQ.FT.

☐ Elements Specification

☐ Elite Specification

---

---

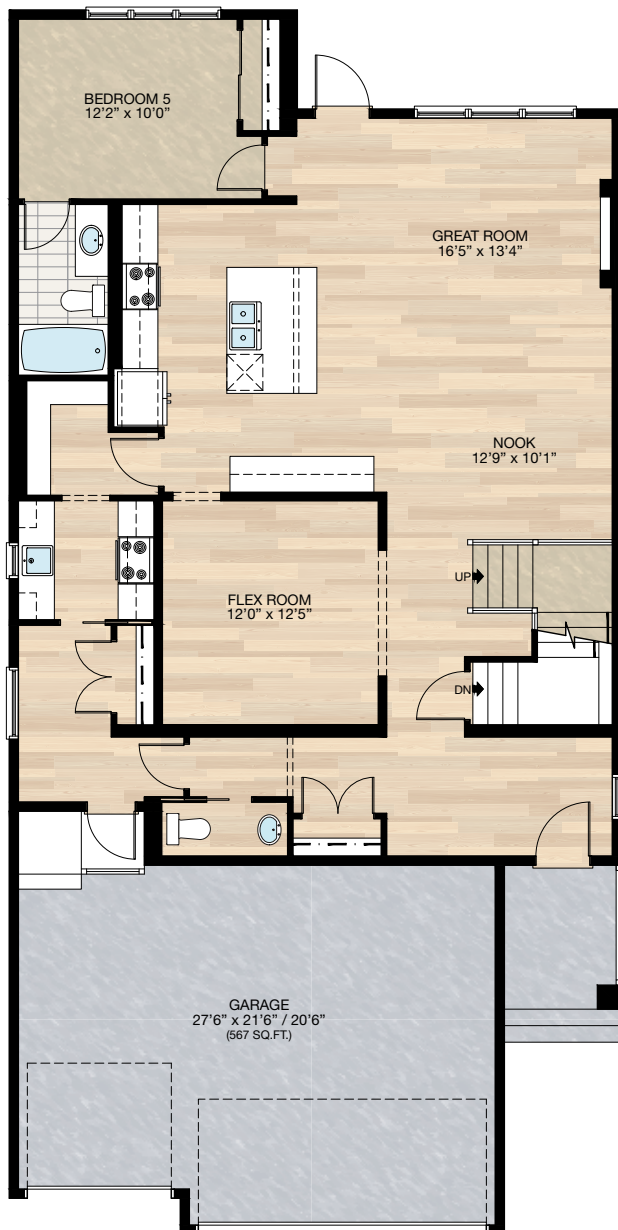
---



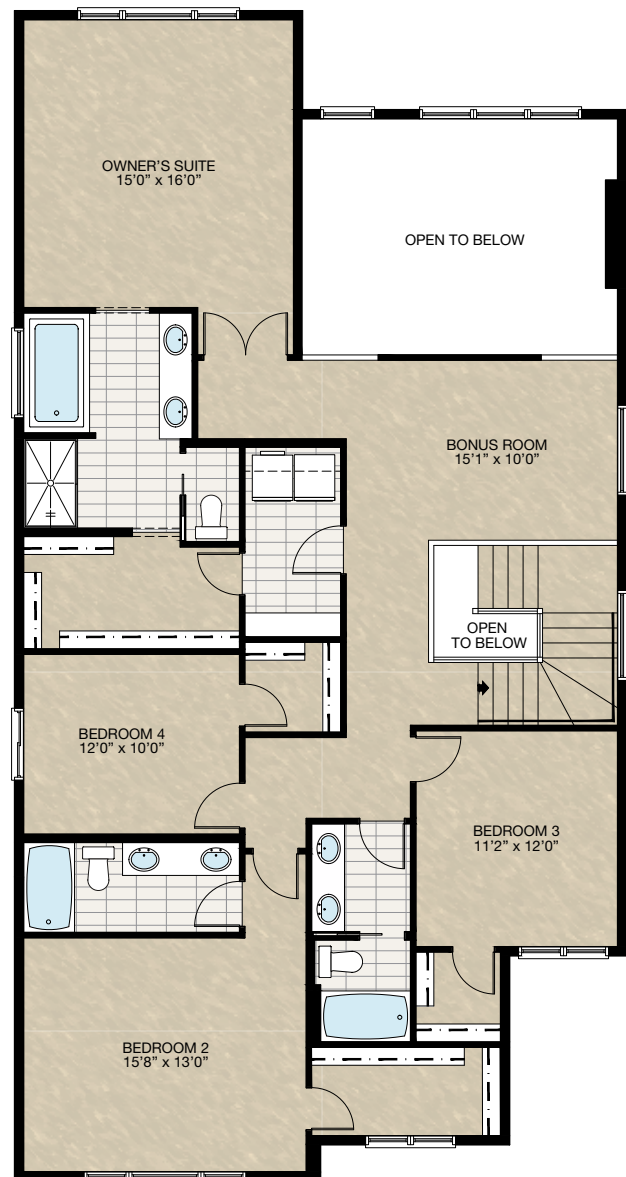
Trico Homes™  
The Heart of Homebuilding®

# STANDARD PLAN

THE  
SPRINGFIELD  
3249 SQ.FT.



**MAIN**  
1494 SQ.FT.



**UPPER**  
1755 SQ.FT.

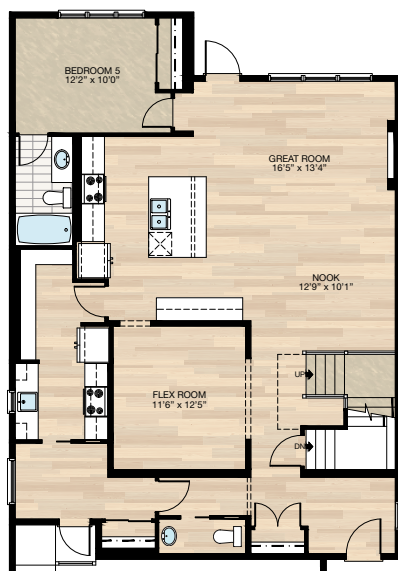


# FEATURED OPTIONS



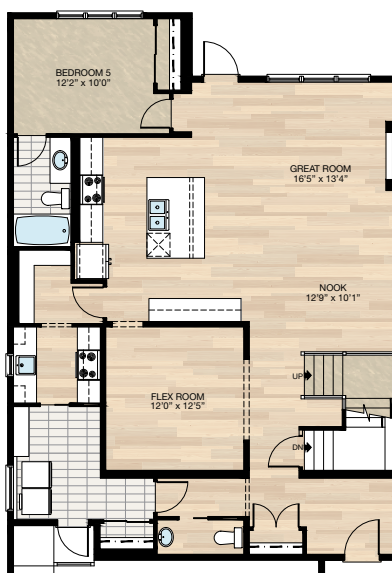
## SELECT-1 ALTERNATE SPICE KITCHEN OPTION

- Relocate mudroom closet
- Reduced mudroom space
- Add fridge to spice kitchen
- Additional wire shelving to pantry
- Reduced flex room by 6"
- Reduced kitchen cabinets by 6" (next to flex room)



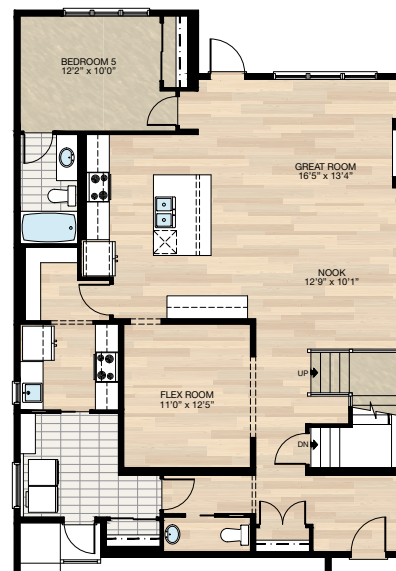
## SELECT-2 MAIN FLOOR LAUNDRY OPTION

- Relocate mudroom closet
- Add wire shelving to laundry/mudroom
- Mudroom flooring changed from hardwood to tile



## SELECT-3 MAIN FLOOR LAUNDRY WITH ALTERNATE SPICE KITCHEN

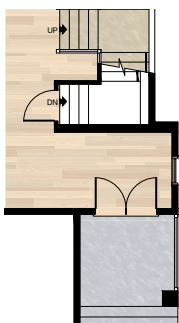
- Relocate mudroom closet
- Add wire shelving to laundry/mudroom
- Add fridge to spice kitchen
- Reduced flex room by 1'0"
- Mudroom flooring changed from hardwood to tile



## SELECT-4 WIDER ENTRY & PORCH OPTION

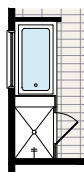
\*Requires minimum lot width of 44' in Calgary & 46' minimum lot width in Chestermere

- Additional 16 Sq.Ft. to main floor
- Extend front entry & foundation below 2'0" x 8'0"
- Extend front precast concrete porch 2'0" in width
- Delete 3'0" front entry door & transom above
- Add 5'4" double front doors & transom above

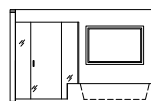


## SELECT-5 ENSUITE SHOWER OPTION

- Delete standard 36" x 60" acrylic base shower
- Add 44" x 66" tiled shower w/10mm glass
- Extend tub tile ledge by 9.5" for shower bench



Shower & Tub  
Plan View



Shower & Tub  
Elevation View

HARDWOOD

DECK

CARPET

CONCRETE

TILE

LVP

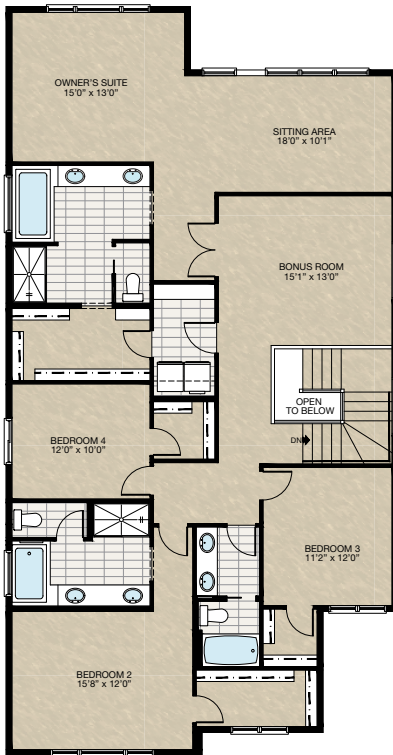


# FEATURED SPRINGFIELD OPTIONS



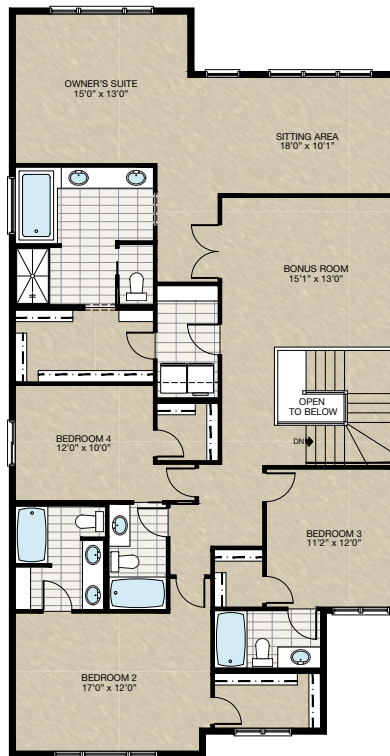
## **SELECT-9** OWNER SUITE WITH SITTING AREA & DUAL ENSUITE OPTION

- Add 231 Sq.Ft. to upper floor
- Sitting area at owner suite in lieu of open to below
- Increase bonus room by 3'0"
- Reduced owner suite by 3'0"
- Additional wire shelving to owner WIC
- Additional 1'0" vanity to owner ensuite
- Relocate ensuite entrance
- Added 60" x 40" frosted window to Bedroom 2 ensuite



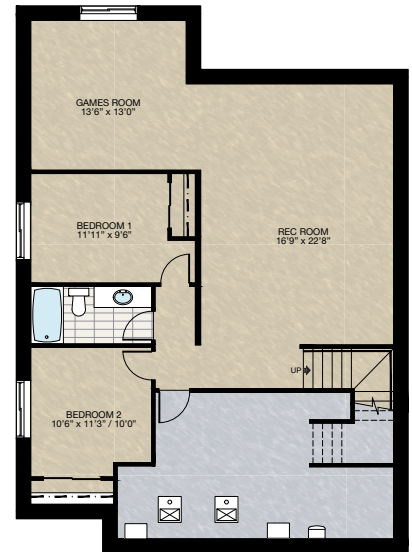
## **SELECT-10** OWNER SUITE WITH SITTING AREA & 4 UPPER FLOOR BATHROOM OPTION

- Add 231 Sq.Ft. to upper floor
- Sitting area at owner suite in lieu of open to below
- Increase bonus room by 3'0"
- Reduced owner suite by 3'0"
- Additional wire shelving to owner WIC
- Additional 1'0" vanity to owner ensuite
- Relocate ensuite entrance
- Added wire shelving to Bedroom 2 ensuite



## **SELECT-11** BASEMENT DEVELOPMENT OPTION

- 1048 Sq.Ft. developed area
- Includes finished basement stairwell
- Relocate 2'8" passage door from top of stairwell to mechanical room
- Upgrade basement windows from 24" high to 36"
- Add 1 riser to stairwell for 9'0" basement ceiling (8'9" headroom clearance)



HARDWOOD

DECK

CARPET

CONCRETE

TILE

LVP

tricohomes.com

# FEATURED SPRINGFIELD OPTIONS

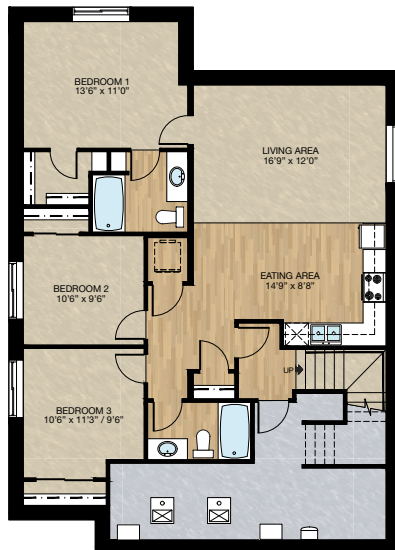


## SELECT-12

### SECONDARY SUITE OPTION 1

\*must combined with side entrance global option for standard lot

- Walk-out lot side entrance not required
- 1106 Sq.Ft. Developed area
- Includes finished basement stairwell
- Upgrade basement window from 24" high to 36"
- Add 1 riser to stairwell for 9'0" basement ceiling (8'9" headroom clearance)
- Includes washer & dryer rough-in only
- Add 60" x 36" hsl window to living area

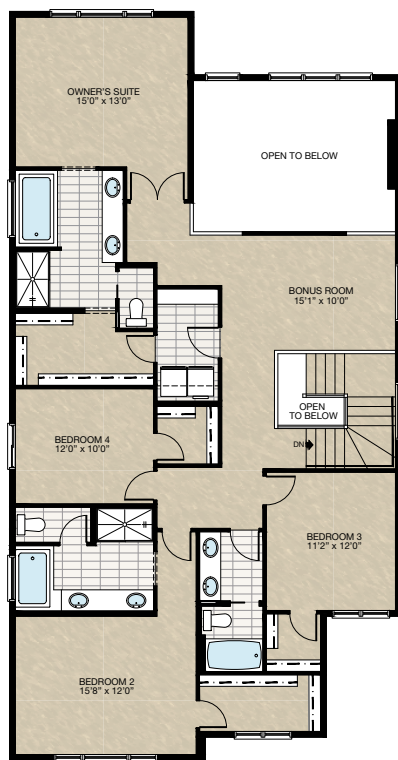


# FEATURED OPTIONS

THE  
SPRINGFIELD  
3249 SQ.FT.

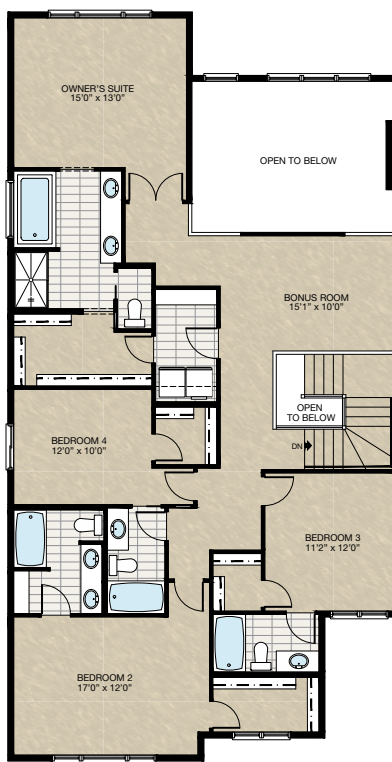
## SELECT-6 DUAL OWNER SUITE OPTION

- Reduced owner's suite by 3'0" to accommodate bedroom #2 ensuite
- Additional 1'0" vanity to owner's ensuite
- Added 60" x 40" frosted window to bedroom #2 ensuite



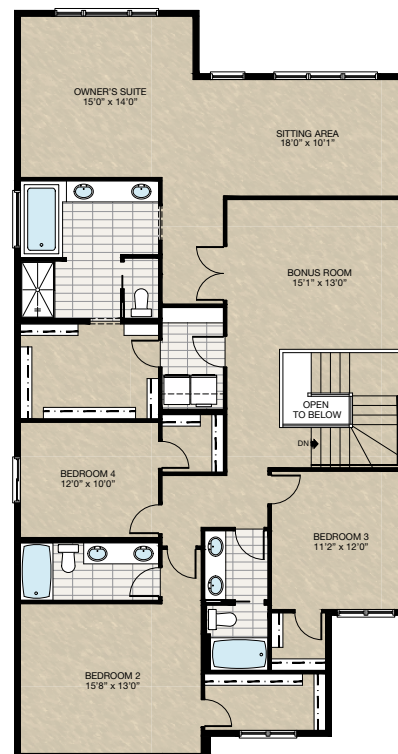
## SELECT-7 UPPER FLOOR 4 BATH OPTION

- Reduced owner suite by 3'0" to accommodate 4th bathroom
- Added wire shelving to Bedroom 2 bathroom



## SELECT-8 OWNER SUITE WITH SITTING AREA OPTION

- Add 231 Sq.Ft. to upper floor
- Sitting area at owner suite in lieu of open to below
- Increase bonus room by 3'0"
- Reduced owner suite by 2'0"
- Increase 2'0" to owner WIC with additional wire shelving
- Additional 1'0" vanity to owner ensuite
- Relocate ensuite entrance



Trico Homes is a local home builder, with new single and multi-family homes for sale in Calgary, Okotoks, Chestermere, Cochrane, Airdrie and DeWinton. Offering a great selection of starter, move-up, semi-estate and ultra-estate models in numerous communities, you'll find the house that's just right for you! Look for this model and many others in Ambleton, Belmont, Brawn Landing, Carrington, Chelsea, Chelsea Court Townhomes, Colours of Seton Townhomes, Cornerbrook, D'Arcy, Creek View, Dawson's Landing, Glacier Ridge, Hamilton Heights, Harmony, Homestead, Huxley, Legacy, Midtown, Pine Creek, Precedence, Rivercrest, Seton, Sirocco, Southbow Landing, Verona West Townhomes, West Springs, West83 Townhomes and Wolf Willow.

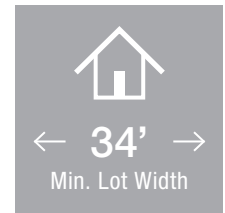


Renderings are artist's conceptions only and may vary by community and lot selection. Prices, floorplans, specifications and dimensions are approximate and are subject to change without notice. E.&O.E. © All rights reserved, including the right if reproduction in the whole or in part without the permission of Trico Homes.


Plan updated as of March 20, 2024.



tricohomes.com



 5 Bedroom

 4 Bathrooms

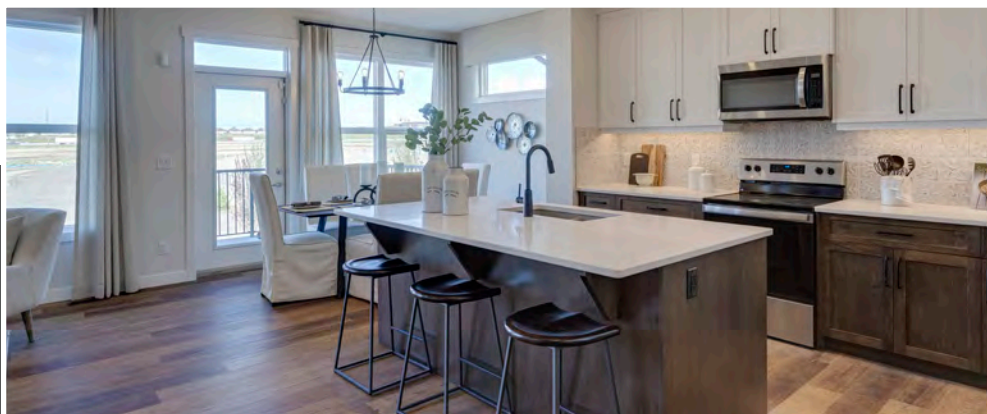
 Double Garage

# THE SPRINGHILL

2664 SQ.FT.

☐ Elements Specification

☐ Elite Specification

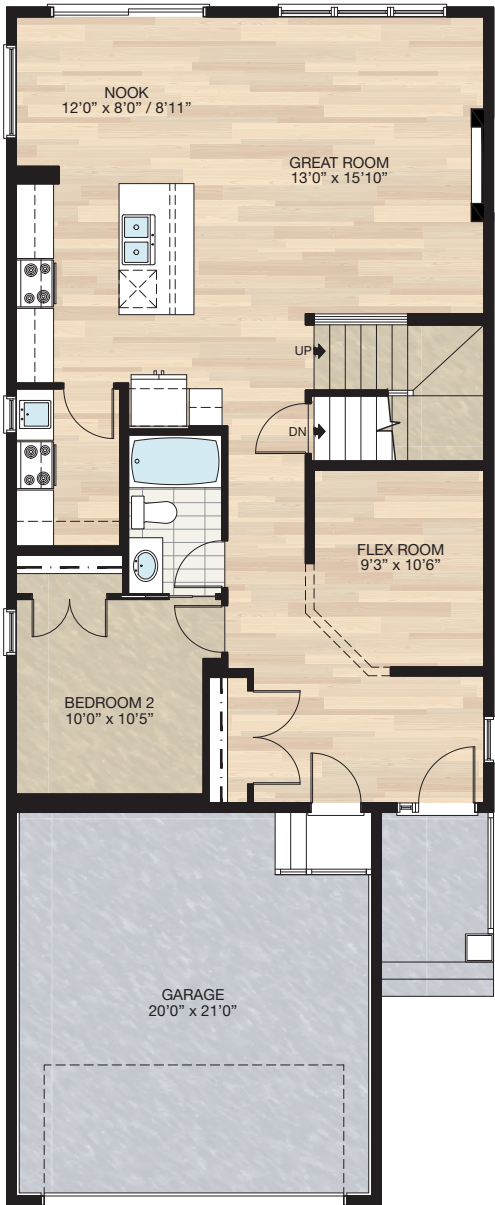


Trico Homes™  
The Heart of Homebuilding®

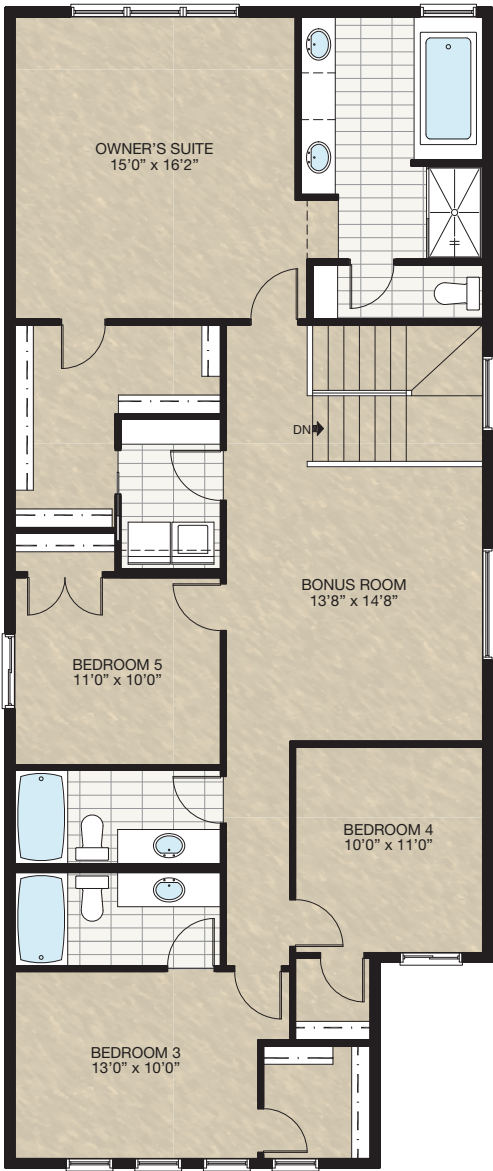


# STANDARD PLAN

THE  
SPRINGHILL  
2664 SQ.FT.



**MAIN**  
1118 SQ.FT.



**UPPER**  
1546 SQ.FT.

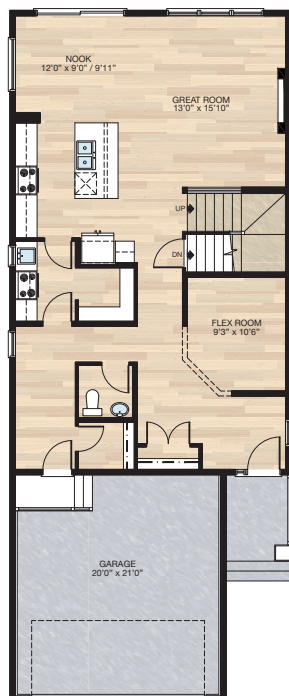


# FEATURED OPTIONS



## SELECT-1 SPICE KITCHEN, PANTRY & MUDROOM OPTION

- Delete Bedroom 2
- Delete tub/shower unit & vanity
- Kitchen moves towards garage 12" to increase nook size
- Decrease spice kitchen lower cabinet 12" & add 24" of upper cabinets
- Add pantry to spice kitchen
- Move 2'8" spice kitchen door to mudroom & replace with 2'6" door
- Change front entry closet doors from two 2'0" to two 2'6"
- Move garage door to mudroom
- Adjust window in mudroom



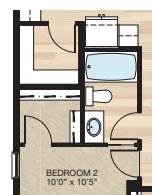
## SELECT-2 PANTRY & MUDROOM OPTION

- Delete spice kitchen & replace with pantry shelves
  - Reduce pantry 7.5" this space is added to mudroom & walk-in closet
  - Mudroom window & lighting adjusted
  - Pantry door reduced to 2'6"
- \*MUST be combined with **SELECT-1**



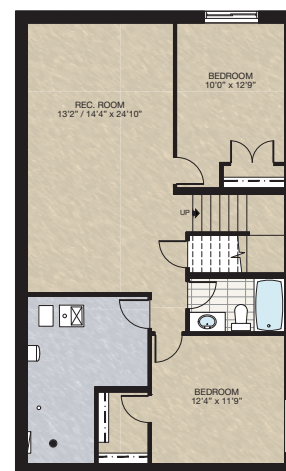
## SELECT-3 PANTRY & WALK-IN CLOSET OPTION

- Delete spice kitchen
- Delete 24" x 40" window
- Change 2'8" door to 2'6" door to new pantry
- Add pantry shelving
- Change two 2'0" doors to 2'6" door to bedroom closet
- Add light & switch to bedroom closet
- Add additional shelving to bedroom closet



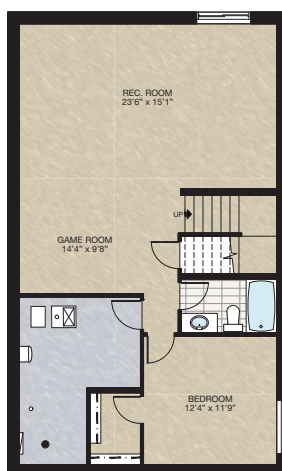
## SELECT-5 BASEMENT DEVELOPMENT OPTION 2

- 815 Sq.Ft. developed area
- Includes finished basement stairwell
- Delete 2'8" door at top of stairwell
- Add one riser to stairwell for 9'0" basement ceiling (8'9" headroom clearance)
- 60" x 24" DHSL changed to 60" x 36" DHSL
- 60" x 24" HSL changed to 60" x 36" HSL



## SELECT-4 BASEMENT DEVELOPMENT OPTION 1

- 815 Sq.Ft. developed area
- Includes finished basement stairwell
- Delete 2'8" door at top of stairwell
- Add one riser to stairwell for 9'0" basement ceiling (8'9" headroom clearance)
- 60" x 24" DHSL changed to 60" x 36" DHSL
- 60" x 24" HSL changed to 60" x 36" HSL



HARDWOOD

DECK

CARPET

CONCRETE

TILE

LVP

tricohomes.com

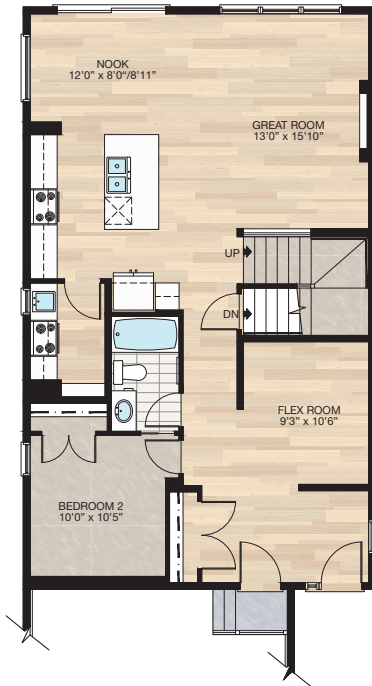
# FEATURED SPRINGHILL OPTIONS



## SELECT-8

### ALTERNATIVE SPICE KITCHEN OPTION

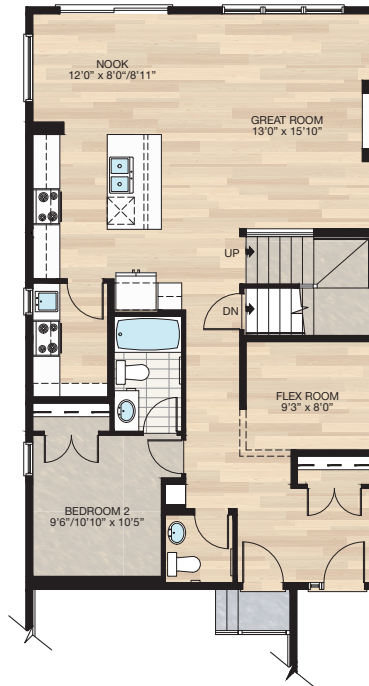
- Reduced lower cabinet space by 15" at spice kitchen
  - Added 21" upper cabinet to spice kitchen
  - Deleted two 66"x 16" wire shelving
  - Added four 39" x 12" wire shelving
- \*CANNOT be combined with **SELECT-1,2 & 3** main floor options



## SELECT-9

### MAIN FLOOR HALF BATH OPTION

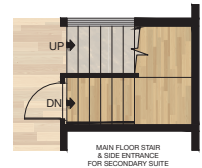
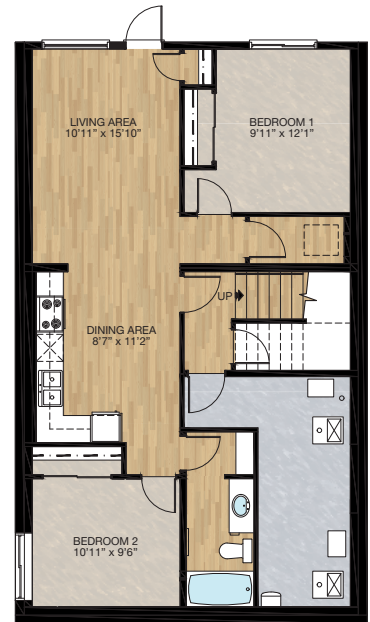
- Reduced bedroom 2 to accommodate half bath space
- Reduced flex room size to accommodate foyer closet
- Relocated foyer closet
- Added MDF capped niche
- Deleted 2'6" pocket door to bathroom in bedroom 2
- Change flush beam above foyer closet to drop beam to allow mechanical access to upper floor



## SECONDARY SUITE

### WALK-OUT OPTION

- 822 Sq.Ft. Basement development
- Included finished basement stairwell
- Add 1 riser to stairwell for 9' basement ceiling (8'9" headroom clearance)
- Change window from 60" x 24" DHSLS to 60" x 36" DHSLS at bedroom 2
- Rear windows and rear exterior entrance included with walkout basement upgrade



HARDWOOD

DECK

CARPET

CONCRETE

TILE

LVP

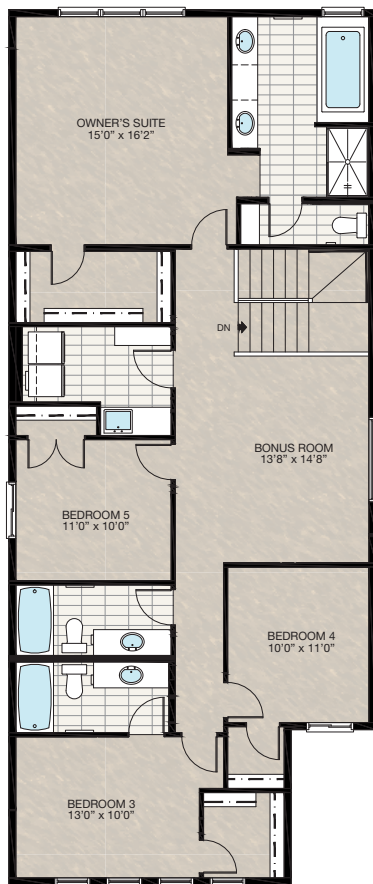
# FEATURED SPRINGHILL OPTIONS

← 34' →  
Min. Lot Width

## SELECT-10

### LAUNDRY ROOM OPTION

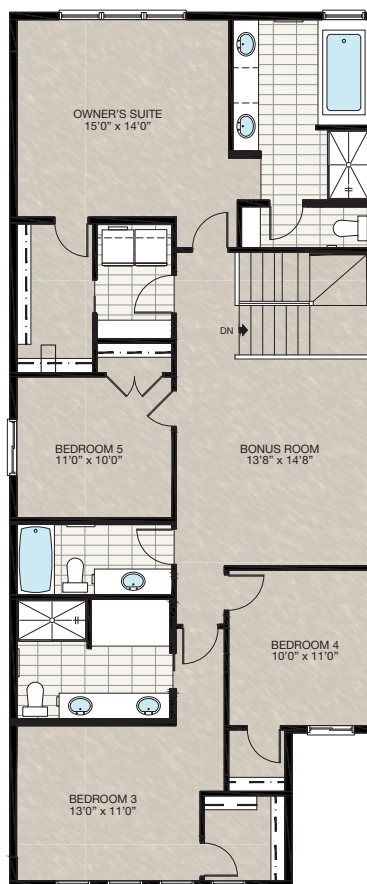
- Reduced owner's bedroom WIC wire shelving
- Deleted 3-way switch at owner's suite WIC
- Reduced laundry room linen shelving length by 16"
- Deleted 2'4" pocket door between WIC and laundry room
- Added 60" lower cabinet with sink



## SELECT-11

### SECOND ENSUITE 5 PIECE OPTION

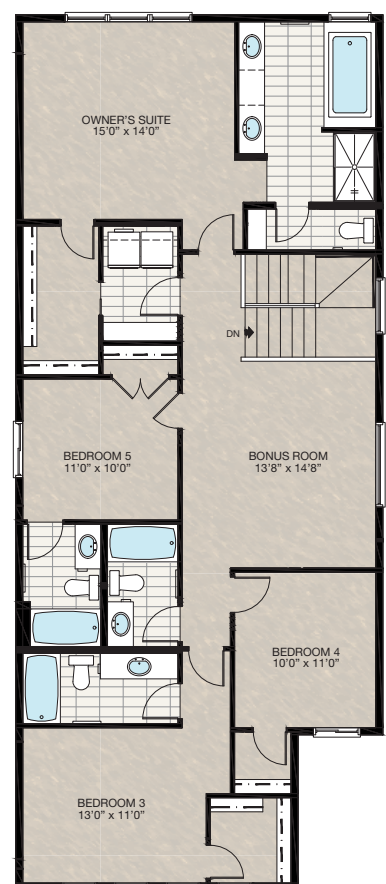
- Reduced owner's suite by 2'0"
- Redesigned owner's suite WIC & laundry area
- Deleted 3-way switch at owner's suite WIC
- Additional 1'0" to bedroom 2



## SELECT-12

### UPPER FLOOR 4 BATHROOM OPTION

- Reduced owner's suite by 2'0"
- Redesigned owner's suite WIC & laundry area
- Deleted 3-way switch at owner's suite WIC
- Additional 1'0" to bedroom 2



HARDWOOD

DECK

CARPET

CONCRETE

TILE

LVP

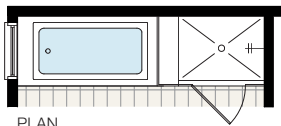


# FEATURED OPTIONS

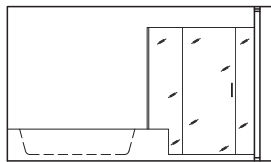
THE  
SPRINGHILL  
2664 SQ.FT.

## ☐ SELECT-7 GLASS & TILE ENSUITE SHOWER

- Delete fibreglass shower tray
- Add 10mm glass, tile curb & shower base
- Extend tub tiled deck



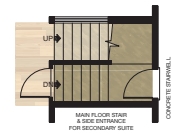
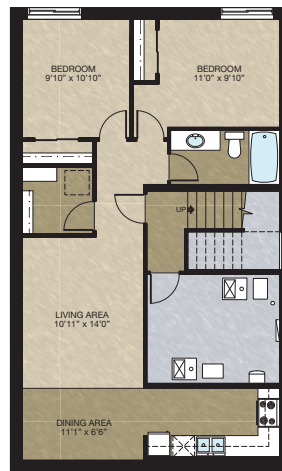
PLAN



ELEVATION

## ☐ SECONDARY SUITE BASEMENT DEVELOPMENT OPTION 1

- 815 Sq.Ft. Developed area
- Includes finished basement stairwell
- Delete 2'8" door at top of stairwell
- Add one riser to stairwell for 9'0" basement ceiling (8'9" headroom clearance)
- 60" x 24" DHSL changed to 60" x 36" DHSL
- 60" x 24" HSL changed to 60" x 36" HSL



Trico Homes is a local home builder, with new single and multi-family homes for sale in Calgary, Okotoks, Chestermere, Cochrane, Airdrie and DeWinton. Offering a great selection of starter, move-up, semi-estate and ultra-estate models in numerous communities, you'll find the house that's just right for you! Look for this model and many others in Ambleton, Arbour Lake, Belmont, Carrington, Chelsea, Cornerbrook, D'Arcy, Dawson's Landing, Glacier Ridge, Hamilton Heights, Homestead, Legacy, Midtown, Pine Creek, Precedence, Rivercrest, Seton, Sirocco, Verona West Townhomes, West83 Townhomes and Wolf Willow.



Renderings are artist's conceptions only and may vary by community and lot selection. Prices, floorplans, specifications and dimensions are approximate and are subject to change without notice. E.&O.E. © All rights reserved, including the right of reproduction in the whole or in part without the permission of Trico Homes.

Plan updated as of April 6, 2023.



tricohomes.com