

24'

New
FEATURED
FLOOR PLAN

THE BRYSON

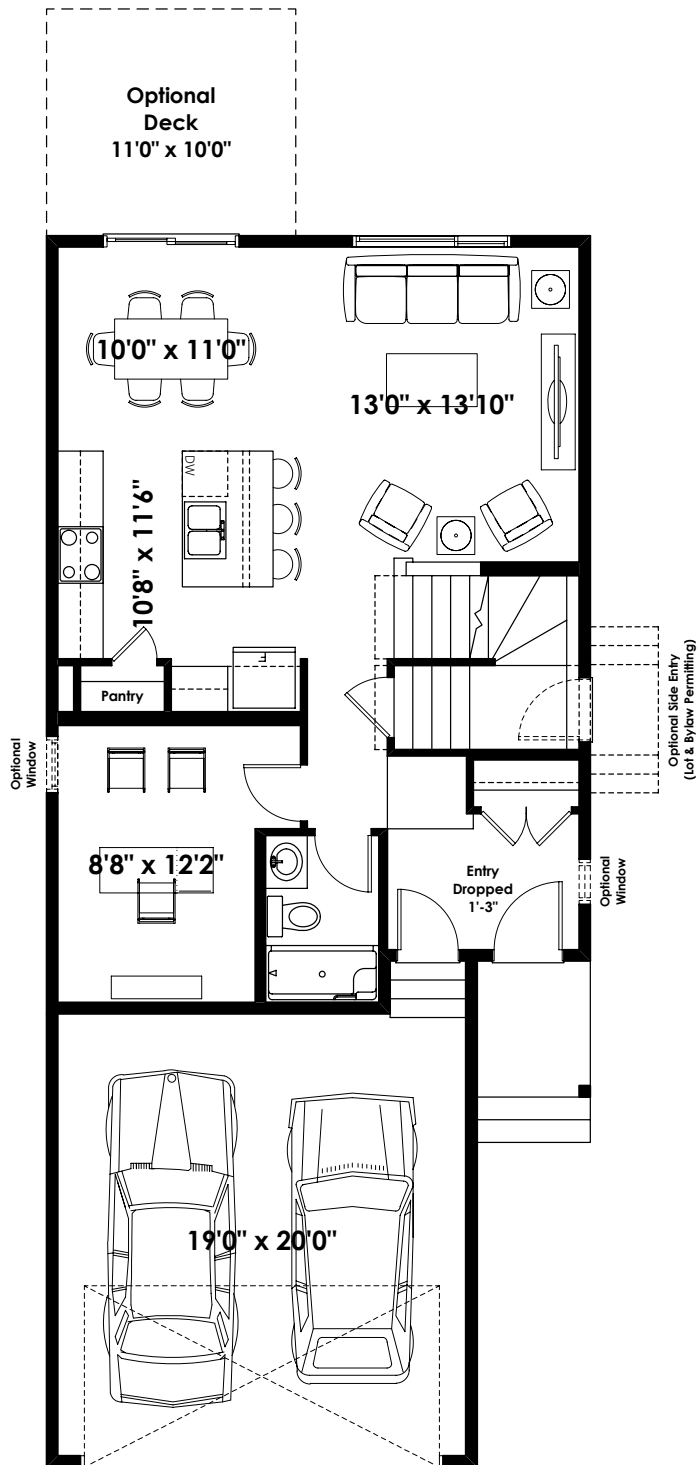
1,812+ SQ FT | 3 BED + FLEX | 3 BATH



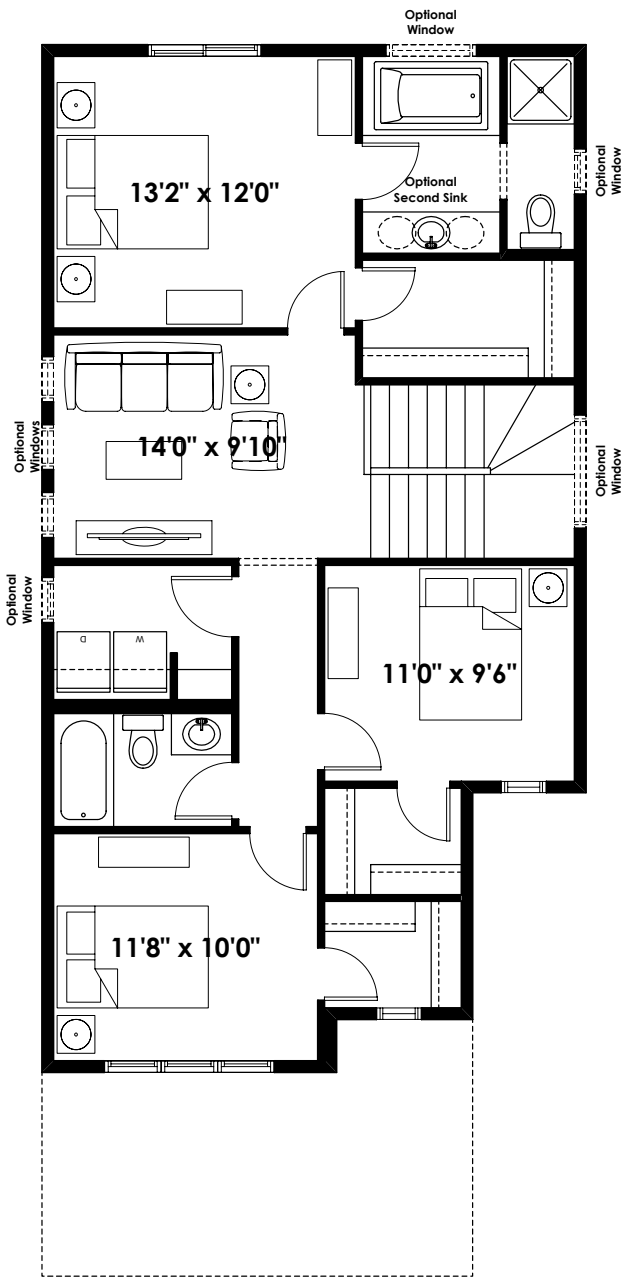
BETTER VALUE BY DESIGN
SINCE 1978 | HOMESBYAVI.COM

Homes by **AVI**

BASE FLOOR PLAN

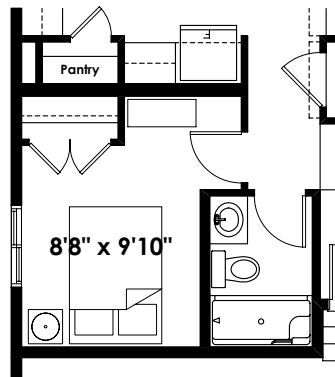


MAIN
803 SQ FT

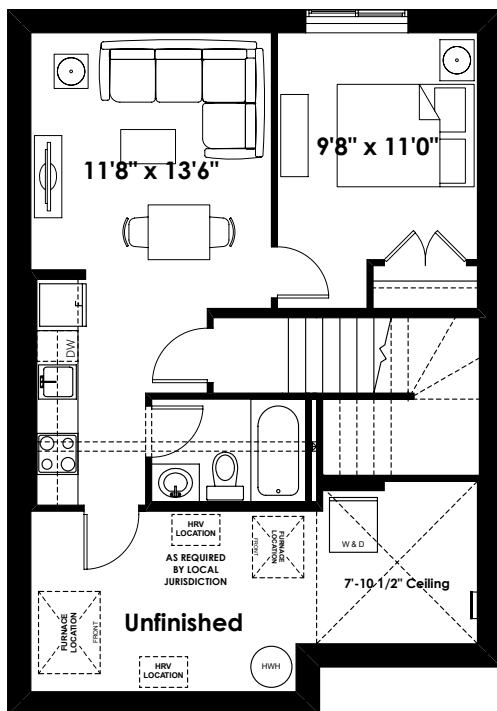


UPPER
1,009 SQ FT

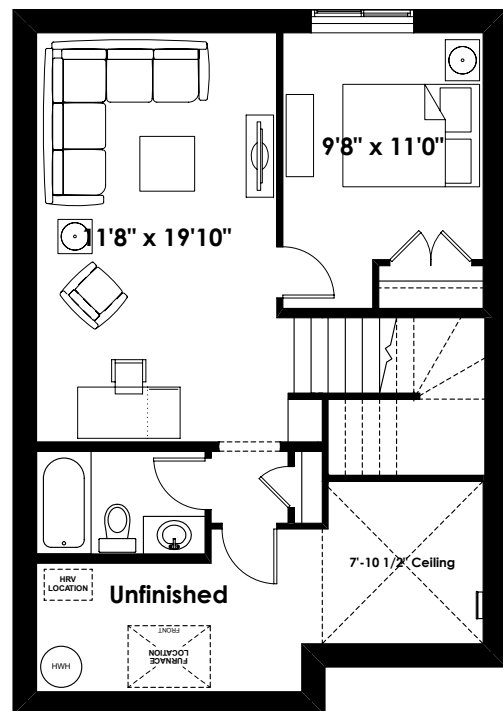
FLOOR PLAN OPTIONS



**Partial Main Floor Plan with
Optional Bedroom**
(Adds 0 Sq.Ft. to Main Floor)



Optional Basement Suite Layout
457 Sq. Ft. (Finished Area;
Includes 9' Foundation Walls)



Optional Basement Room Layout
485 Sq. Ft. (Finished Area;
Includes 9' Foundation Walls)

FEATURES OF THE BRYSON

- **Optional Side Entrance**
Perfect for future plans, like adding a basement suite for family members or use as a rental unit.
- **Main Floor Bed & Full Bath**
Ideal for a home office, guest room, or multi-generational living.
- **10' Front Entry Ceiling**
Prepare to wow your guests with a grand entrance.
- **Spacious Kitchen-Dining-Great Room**
Perfect for entertaining or quiet evenings at home.
- **Upper Floor Loft**
A quiet retreat for hobbies or movie nights.
- **Elevated Ceilings**
9' basement and main floor ceilings create a sense of spaciousness and maximize natural light.
- **4-Piece Ensuite**
Your private relaxation oasis, complete with all the comforts you deserve.
- **Upper Floor Laundry Room**
Because convenience shouldn't be a luxury.
- **Walk-in Closets in Secondary Bedrooms**
Plenty of storage for the whole family.
- **Double Attached Front Drive Garage**
Convenience and protection for your vehicles.



24'

THE GABRIEL

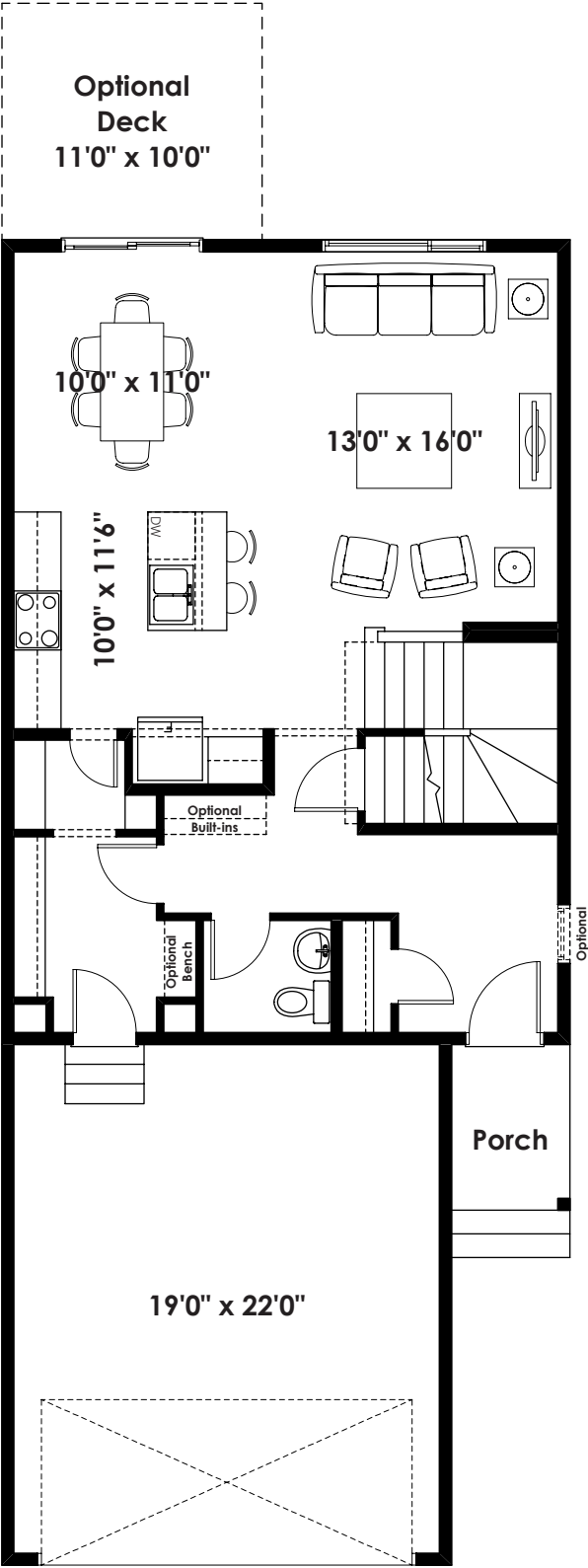
2,001+ SQ FT | 3 BED | 2.5 BATH



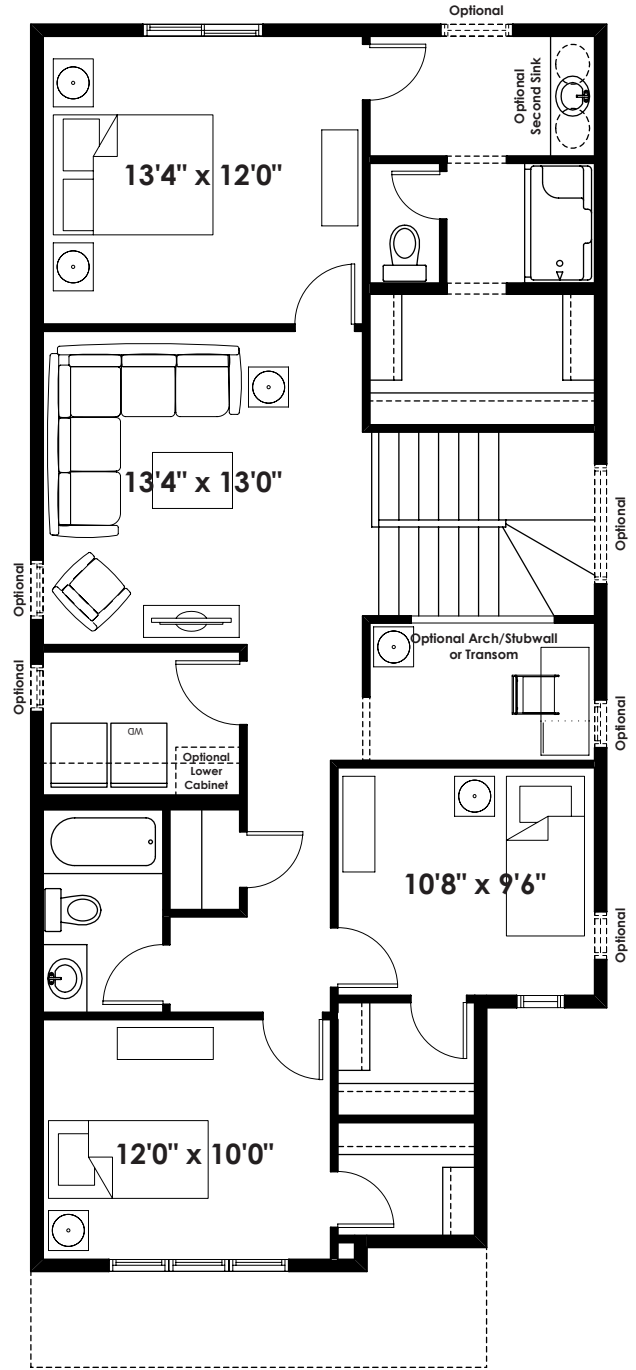
BETTER VALUE BY DESIGN
SINCE 1978 | HOMESBYAVI.COM

Homes by **AVI**

BASE FLOOR PLAN

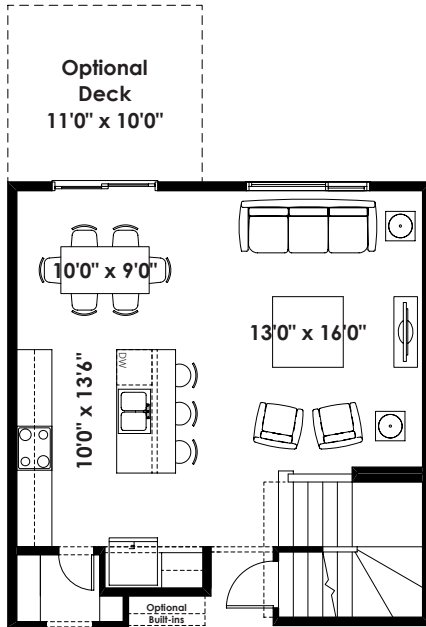


MAIN
816 SQ FT

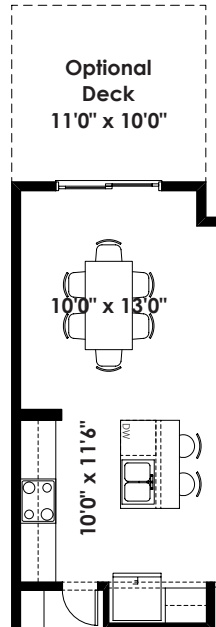


UPPER
1,185 SQ FT

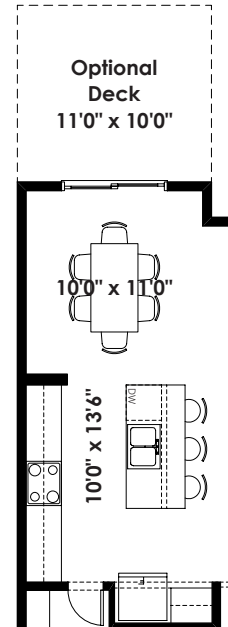
FLOOR PLAN OPTIONS



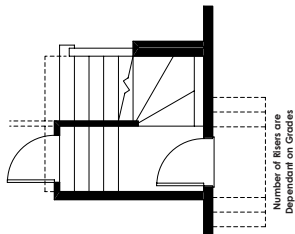
**Partial Main Floor Plan with
Optional Kitchen**
(Adds 0 Sq. Ft. to Main Floor)



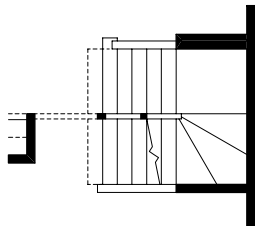
**Partial Main Floor Plan with
Optional Eating Area Extension**
(Adds 22 Sq. Ft. to Main Floor)



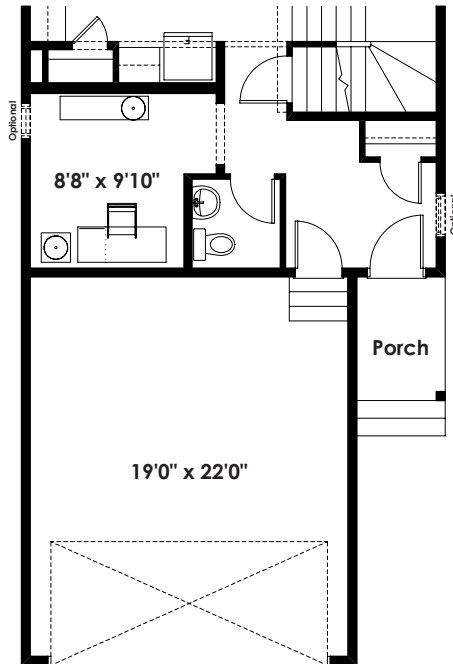
**Partial Main Floor Plan with
Optional Eating Area Extension
For Use With Optional Kitchen**
(Adds 22 Sq. Ft. to Main Floor)



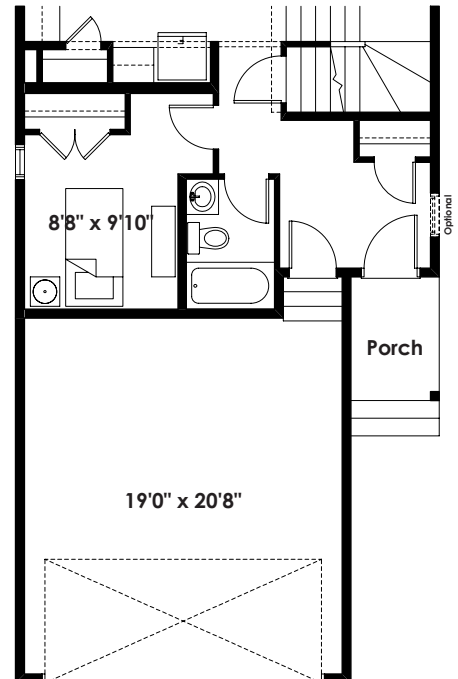
**Partial Main Floor Plan
with Optional Side Entry**
(Adds 0 Sq. Ft. to Main Floor;
Lot & Bylaw Permitting)



**Partial Main Floor Plan with
Optional Finished Stair to Basement
c/w Center Wall Opening**
(Adds 0 Sq. Ft. to Main Floor)



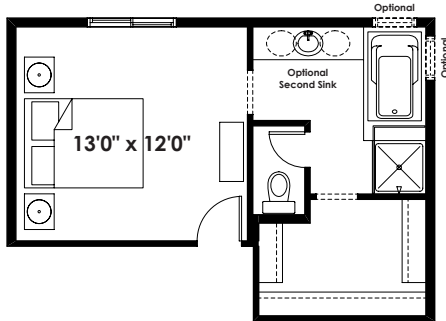
**Partial Main Floor Plan with
Optional Main Floor Flex Room**
(Adds 0 Sq. Ft. to Main Floor)



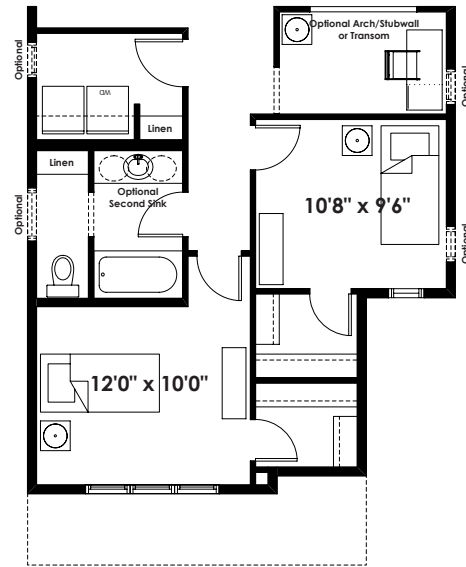
**Partial Main Floor Plan with
Optional Main Floor Bedroom**
(Adds 35 Sq. Ft. to Main Floor;
Adds 1'-0" to Garage Length)

ADDITIONAL
OPTIONS

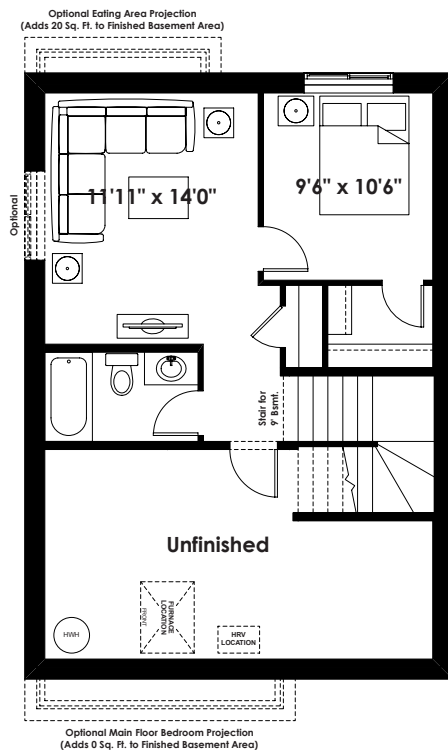
FLOOR PLAN OPTIONS



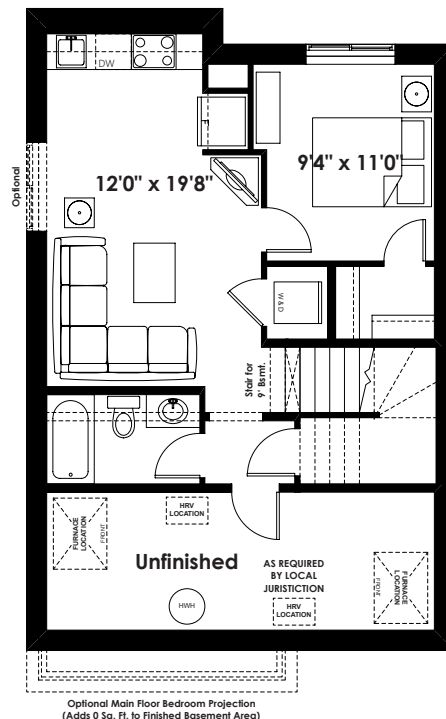
**Partial Second Floor Plan with
Optional Upgraded Ensuite #1
(Adds 0 Sq. Ft. to Second Floor)**



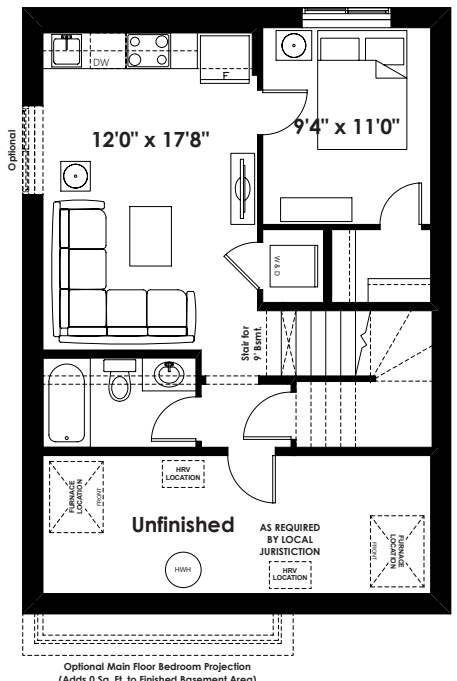
**Partial Second Floor Plan with
Optional Upgraded Main Bath
(Adds 0 Sq. Ft. to Second Floor)**



**Optional Basement Room Layout
431 Sq. Ft. (Finished Area)**



**Optional Basement Suite Layout
For Use with Extended Kitchen Options
506 Sq. Ft. (Finished Area)
(Must Add Optional Side Entry)**



**Optional Basement Suite Layout
486 Sq. Ft. (Finished Area)
(Must Add Optional Side Entry)**

24'

THE HEMSWORTH

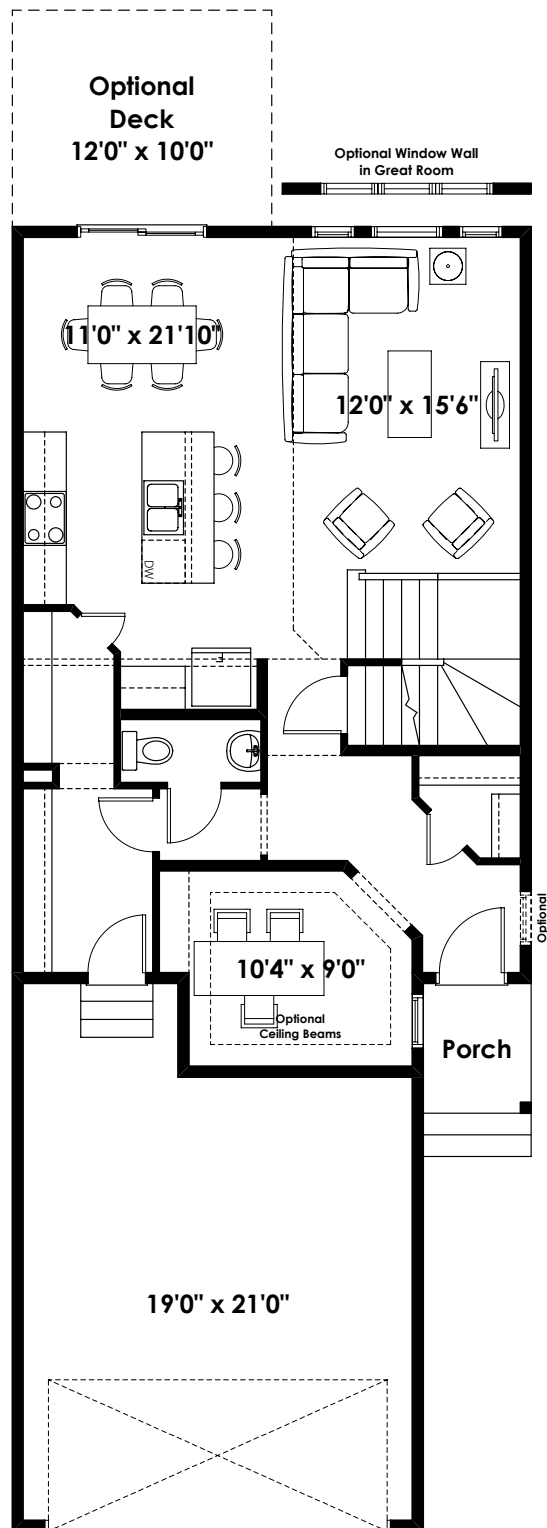
2,004+ SQ FT | 3 BED | 2.5 BATH



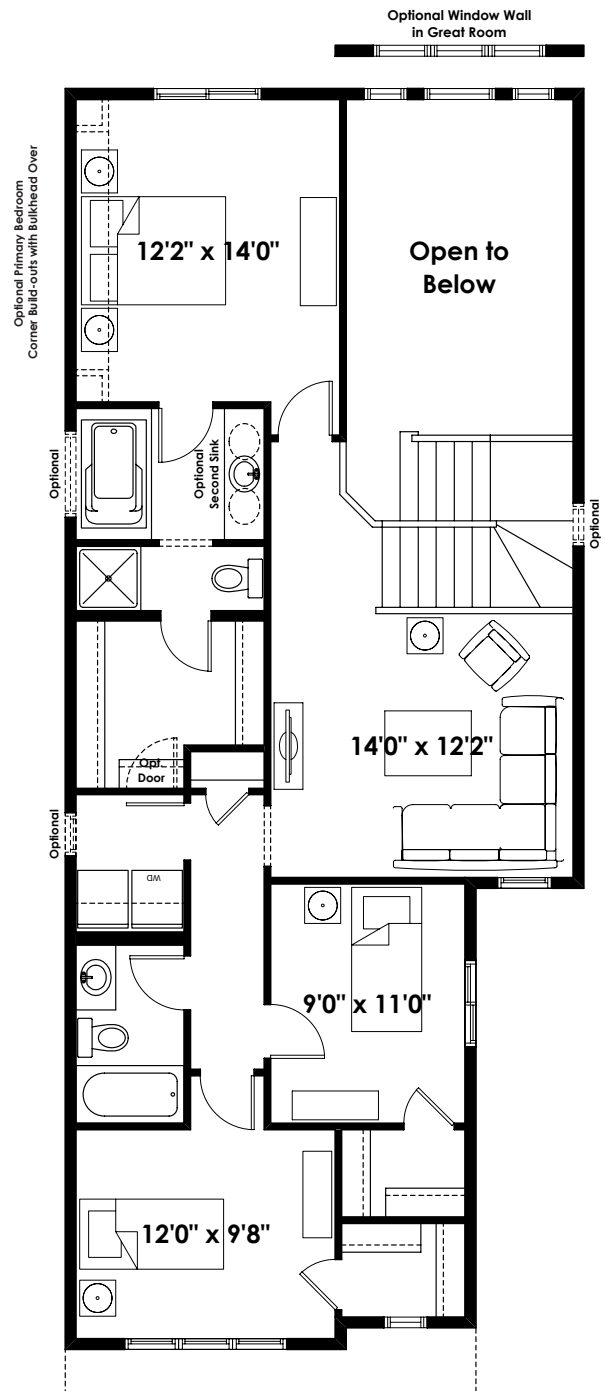
BETTER VALUE BY DESIGN
SINCE 1978 | HOMESBYAVI.COM

Homes by **AVI**

BASE FLOOR PLAN

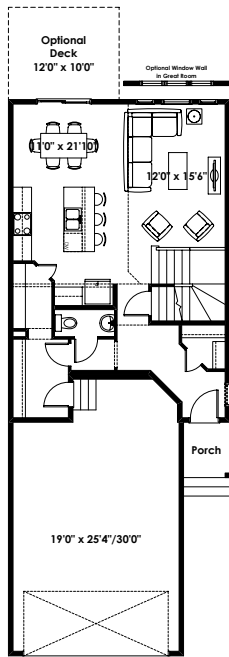


MAIN
889 SQ FT

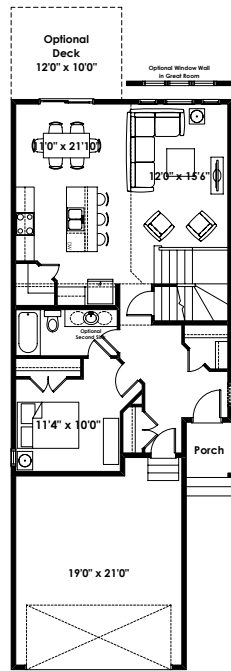


UPPER
1,115 SQ FT

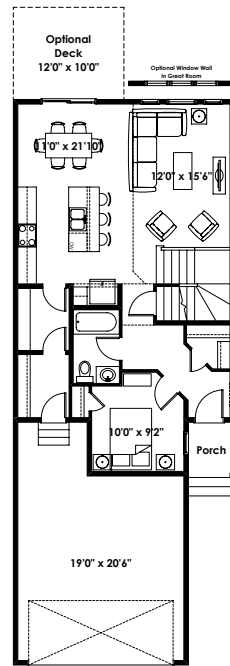
FLOOR PLAN OPTIONS



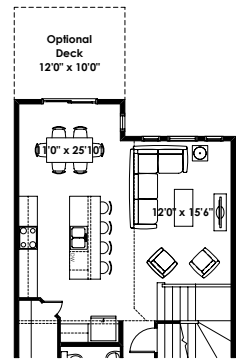
Main Floor Plan with Optional Extended Garage for Hemsworth Base Elevation (Deletes 98 Sq. Ft. from Main Floor; Deletes Flex Room)



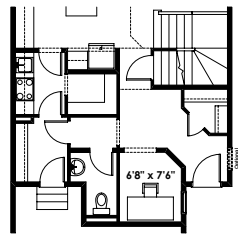
Main Floor Plan with Optional Main Floor Bedroom & 3 Piece Ensuite for Hemsworth - Base Elevation (Adds 49 Sq. Ft. to Main Floor; Adds 1'-6" to Garage Length)



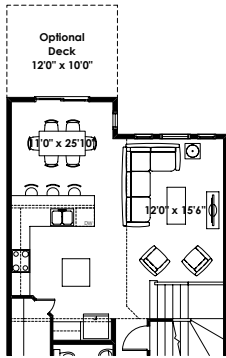
Main Floor Plan with Optional Alternate Main Floor Bedroom & 3 Piece Bathroom for Hemsworth - Base Elevation (Adds 15 Sq. Ft. to Main Floor; Adds 1'-0" to Garage Length)



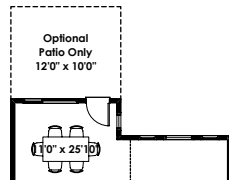
Partial Main Floor Plan with Optional Extended Kitchen #1 (Adds 48 Sq. Ft. to Main Floor)



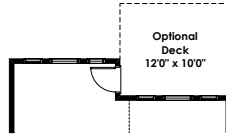
Partial Main Floor Plan with Optional Spice Kitchen (Adds 0 Sq. Ft. to Main Floor)



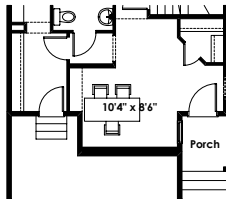
Partial Main Floor Plan with Optional Extended Kitchen #2 (Adds 48 Sq. Ft. to Main Floor)



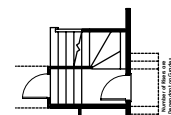
Partial Main Floor Plan for Optional Two Bedroom Basement Suite Layout for Optional Extended Kitchen #1 & #2 (Adds 0 Sq. Ft. to Main Floor)



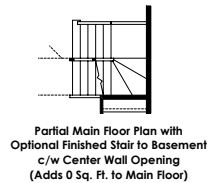
Partial Main Floor Plan with Optional Deck Location for Extended Kitchen #1 & #2 (Adds 0 Sq. Ft. to Main Floor)



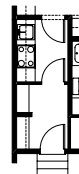
Partial Main Floor Plan with Optional Open Flex Room (Adds 0 Sq. Ft. to Main Floor)



Partial Main Floor Plan with Optional Side Entry (Adds 0 Sq. Ft. to Main Floor; Lot & Bylaw Permitting; Stair Winders Relocated to Opposite Side of Stair)

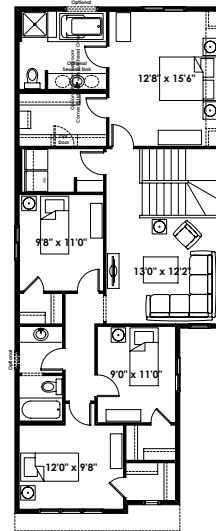


Partial Main Floor Plan with Optional Finished Stair to Basement c/w Center Wall Opening (Adds 0 Sq. Ft. to Main Floor)

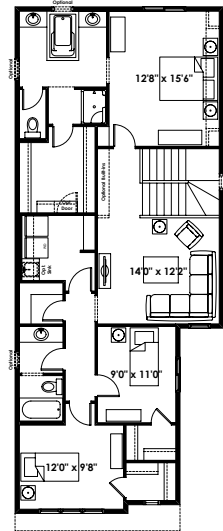


Partial Main Floor Plan with Optional Spice Kitchen for Use with Alternate Main Floor Bedroom & 3 Piece Bathroom (Adds 15 Sq. Ft. to Main Floor; Adds 1'-0" to Garage Length)

NOTE: THIS OPTION NOT AVAILABLE IF OPTIONAL EXTENDED KITCHEN #1 OR #2 ARE SELECTED



Second Floor Plan with 4 Bedrooms & Upgraded Ensuite for Hemsworth Base Elevation (Adds 169 Sq. Ft. to Second Floor)

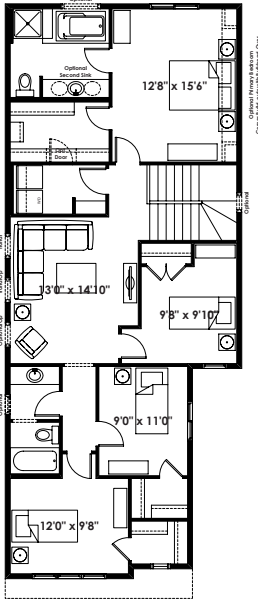


Second Floor Plan with Upgraded Ensuite, Laundry Room, Linen Closet and Main Bath for Hemsworth Base Elevation (Adds 169 Sq. Ft. to Second Floor)

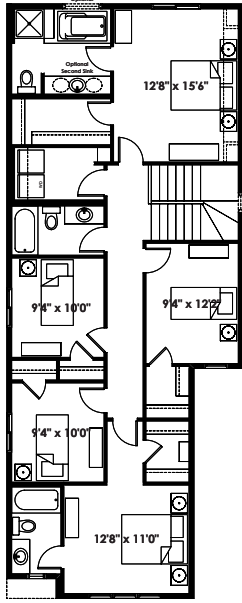
Partial Main Floor Plan with Optional Interior Fireplace (Adds 0 Sq. Ft. to Main Floor)

ADDITIONAL OPTIONS

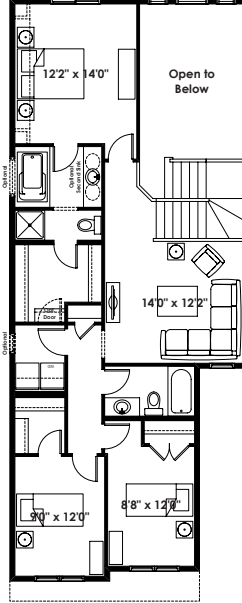
FLOOR PLAN OPTIONS



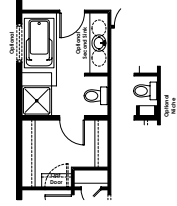
Alternate Second Floor Plan with 4 Bedrooms & Upgraded Ensuite for Hemsworth Base Elevation (Adds 169 Sq. Ft. to Second Floor)



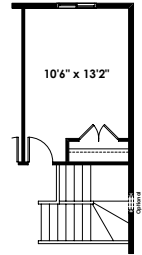
Second Floor Plan with 5 Bedrooms for Hemsworth Base Elevation (Adds 203 Sq. Ft. to Second Floor)



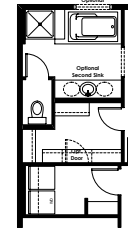
Second Floor Plan with Two Bedrooms Over Garage for Hemsworth Base Elevation (Removes 3 Sq. Ft. from Second Floor)



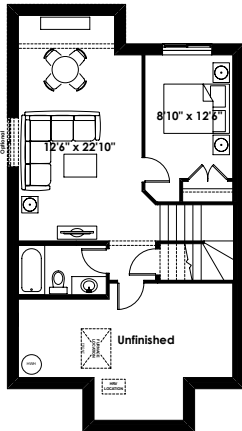
Partial Second Floor Plan with Optional Glass Wall Shower (Adds 0 Sq. Ft. to Second Floor)



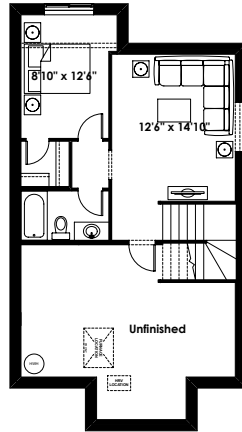
Partial Second Floor Plan with Optional Fourth Bedroom



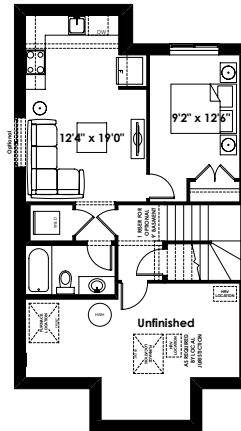
Partial Second Floor Plan with Separate Toilet Room for use with 4 Bedrooms & Upgraded Ensuite (Adds 169 Sq. Ft. to Second Floor)



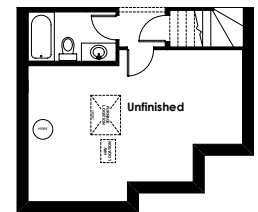
Optional Basement Room Layout with Extended Kitchen Options 532 Sq. Ft. (Finished Area)



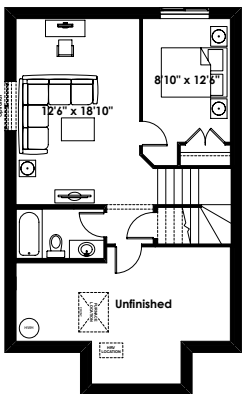
Optional Basement Suite Layout for Extended Kitchen Options with Optional Deck Location 459 Sq. Ft. (Finished Area)



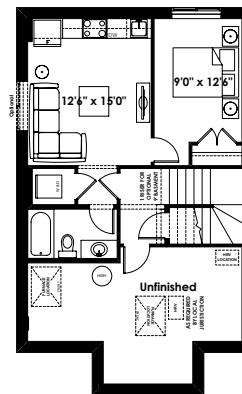
Optional Basement Suite Layout with Extended Kitchen Options 532 Sq. Ft. (Finished Area)



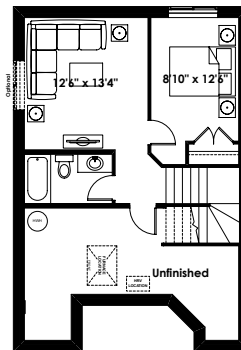
Partial Basement layout of Optional Basement Room Layout with Optional Main Floor Bedroom (Adds 0 Sq. Ft. to Basement Development)



Optional Basement Room Layout 489 Sq. Ft. (Finished Area)



Optional Basement Suite Layout 489 Sq. Ft. (Finished Area)



Optional Basement Room Layout with Optional Extended Garage 416 Sq. Ft. (Finished Area)

Prices are subject to change without notice. Actual floor plan, elevation, and square footage may not be exactly as shown. Square footage is measured to Alberta Building Code (ABC) regulations. Builder reserves the right to make changes without notice. E&OE.

Homes by **AVI**

26'

THE HAWTHORNE

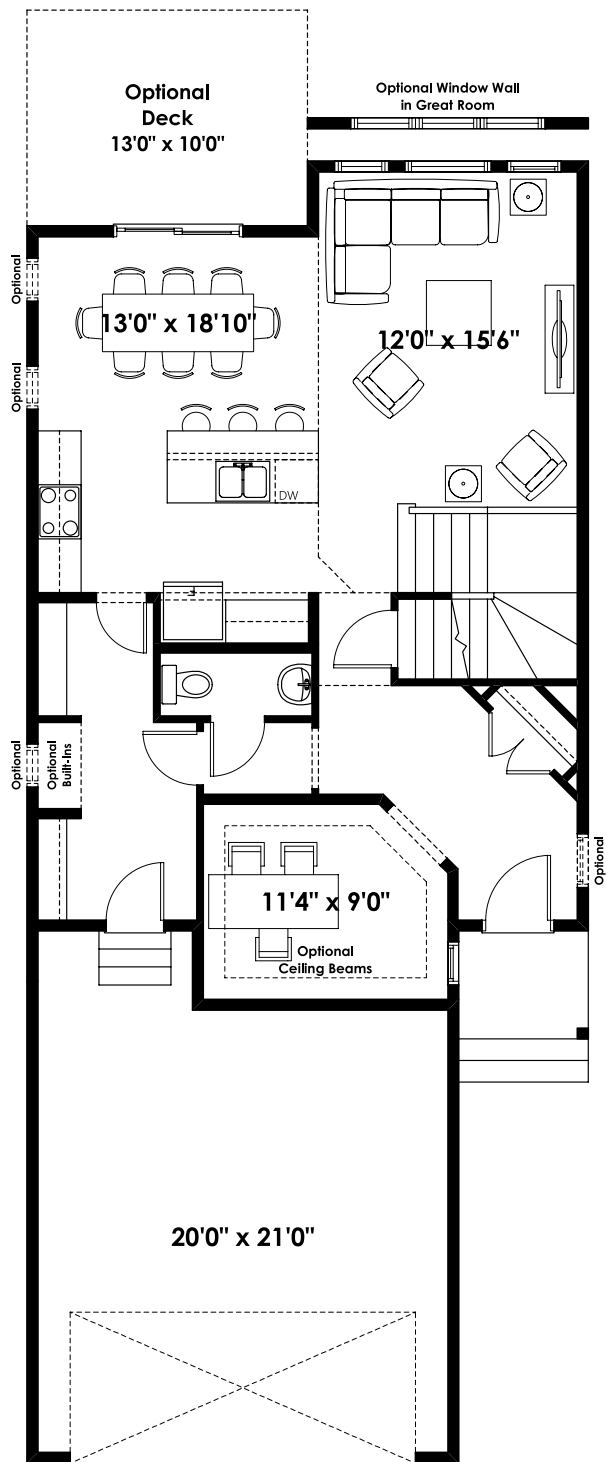
2,118+ SQ FT | 3 BED | 2.5 BATH



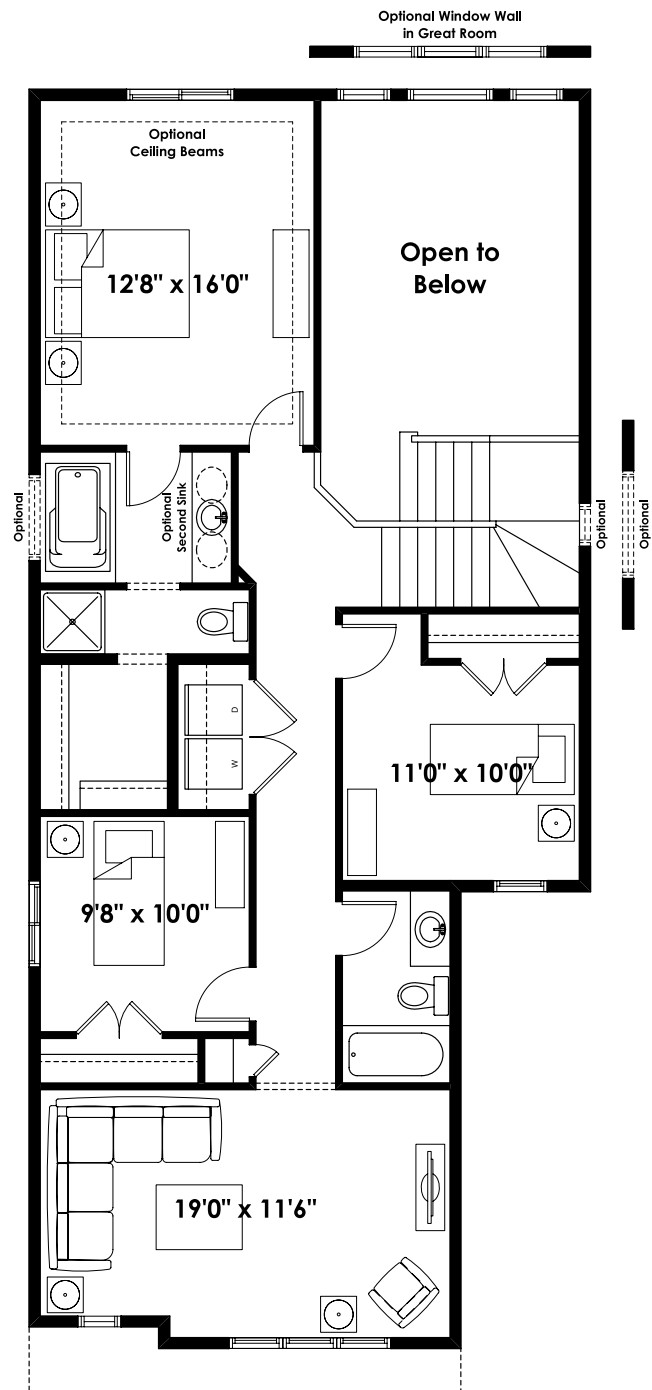
BETTER VALUE BY DESIGN
SINCE 1978 | HOMESBYAVI.COM

Homes by **AVI**

BASE FLOOR PLAN

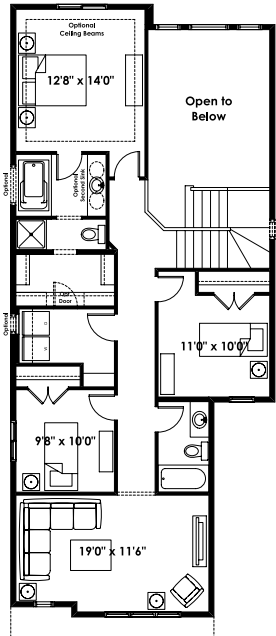


MAIN
934 SQ FT

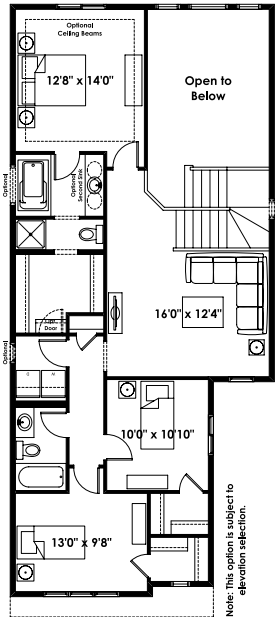


UPPER
1,184 SQ FT

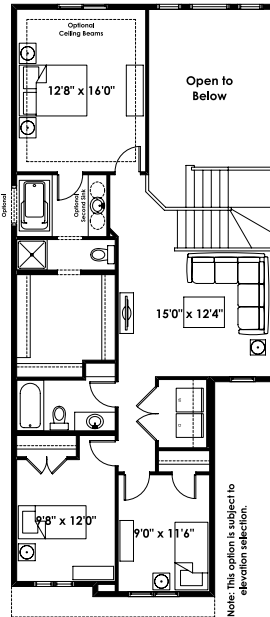
FLOOR PLAN OPTIONS



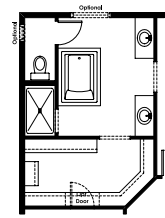
Second Floor Plan with
Laundry Room
for Hawthorne - Base Elevation
(Adds 28 Sq. Ft. to Second Floor
Must be Combined with Optional
Kitchen / Nook Extension)



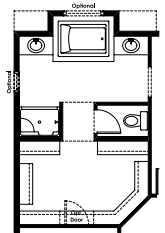
Second Floor Plan with
3 Bedrooms, Loft and Laundry Room
for Hawthorne - Base Elevation
(Adds 0 Sq. Ft. to Second Floor)



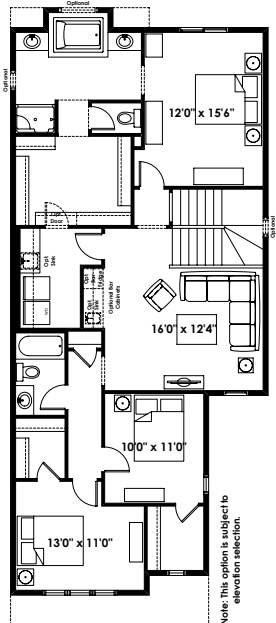
Second Floor Plan with
3 Bedrooms and Loft
for Hawthorne - Base Elevation
(Removes 2 Sq. Ft. from Second Floor)



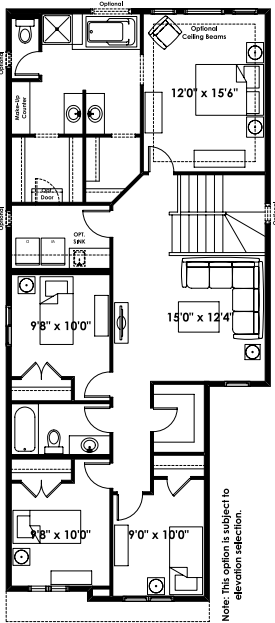
Optional Upgraded Ensuite #2 for
Use with Second Floor Plan
with 4 Bedrooms, Upgraded Ensuite,
Loft and Laundry Room
(Adds 198 Sq. Ft. to Second Floor
Must be combined with Optional
Kitchen/Nook Extension)



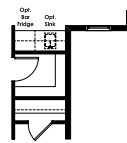
Optional Upgraded Ensuite #1 for
Use with Second Floor Plan
with 4 Bedrooms, Upgraded Ensuite,
Loft and Laundry Room
(Adds 212 Sq. Ft. to Second Floor
Must be combined with Optional
Kitchen/Nook Extension)



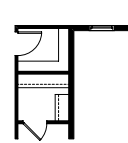
Second Floor Plan with
3 Bedrooms, Upgraded Ensuite,
Loft and Laundry Room
for Hawthorne - Base Elevation
(Adds 185 Sq. Ft. to Second Floor;
Must be combined with Optional
Kitchen/Nook Extension)



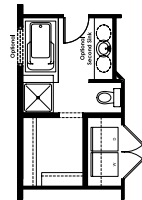
Second Floor Plan with
4 Bedrooms, Upgraded Ensuite,
Loft and Laundry Room
for Hawthorne - Base Elevation
(Adds 198 Sq. Ft. to Second Floor
Must be combined with Optional
Kitchen/Nook Extension)



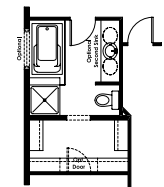
Optional Loft Bar
for use with Second
Floor Plan with 4 Bedrooms,
Upgraded Ensuite, Loft
and Laundry Room
(Adds 198 Sq. Ft. to Second
Floor; Must be used with
Optional Kitchen/Nook Extension)



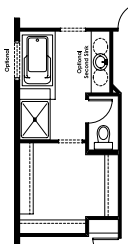
Optional Walk-in Closet
for use with Second
Floor Plan with 4 Bedrooms,
Upgraded Ensuite, Loft
and Laundry Room
(Adds 198 Sq. Ft. to Second
Floor; Must be used with
Optional Kitchen/Nook Extension)



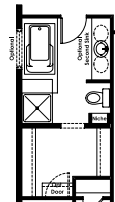
Partial Second Floor Plan with
Optional Glass Wall Shower Walls
(Adds 0 Sq. Ft. to Second Floor)



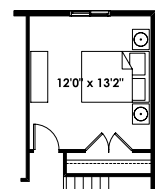
Partial Second Floor Plan with
Optional Glass Shower Walls for
Use with Second Floor with
Laundry Room
(Adds 28 Sq. Ft. to Second Floor)



Partial Second Floor Plan with
Optional 48" Shower with
Glass Walls and Toilet Room for
Use with Second Floor Plan with
3 Bedrooms and Loft
(Removes 2 Sq. Ft. from Second Floor)

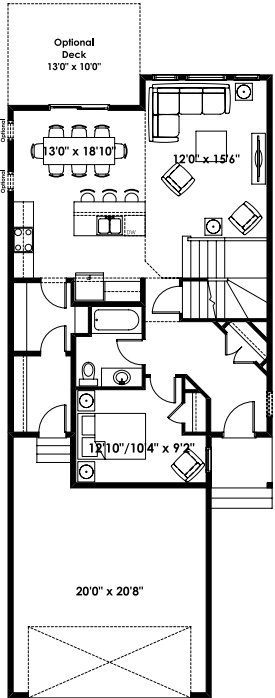


Partial Second Floor Plan with
Optional Glass Wall Shower for
Use with Second Floor Plan with
3 Bedrooms, Loft and
Laundry Room
(Adds 0 Sq. Ft. to Second Floor)

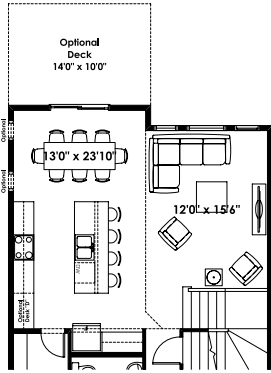


Partial Second Floor Plan
with Optional Fourth Bedroom
(Adds 200 Sq. Ft. to Second Floor)

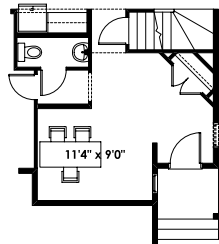
FLOOR PLAN OPTIONS



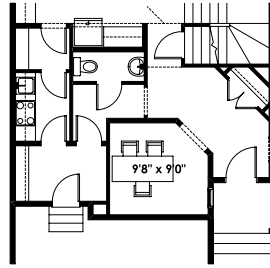
Main Floor Plan with Optional Main Floor Bedroom & 3 Piece Bathroom for Hawthorne - Base Elevation (Adds 24 Sq. Ft. to Main Floor; Adds 1'-0" to Garage Length)



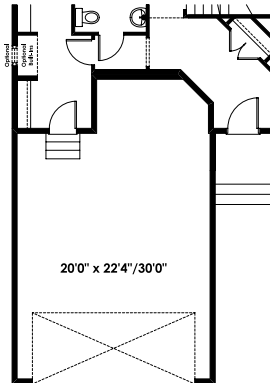
Partial Main Floor Plan with Optional Kitchen / Nook Extension (Adds 67 Sq. Ft. to Main Floor)



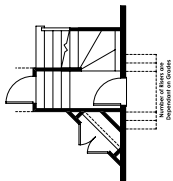
Optional Open Flex Room (Adds 5 Sq. Ft. to Main Floor)



Partial Main Floor Plan with Optional Spice Kitchen (Adds 17 Sq. Ft. to Main Floor)

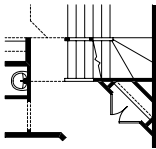


Partial Main Floor Plan for Optional Extended Garage for Hawthorne - Base Elevation (Removes 101 Sq. Ft. from Main Floor; Deletes Flex Room)

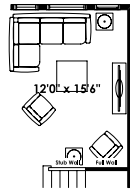


Partial Main Floor Plan with Optional Side Entry (Adds 0 Sq. Ft. to Main Floor; Lot & Bylaw Permitting; Stair Winders Relocated to Opposite Side of Stair)

NOTE: BASEMENT STAIR UNFINISHED



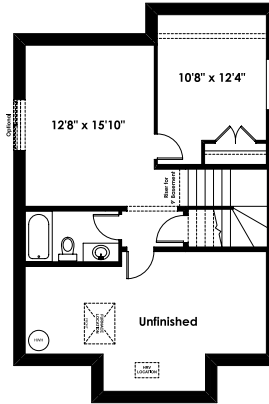
Optional Finished Stair to Basement c/w Center Wall Opening (Adds 0 Sq. Ft. to Main Floor)



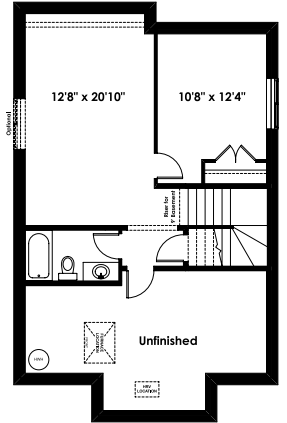
Partial Main Floor Plan for use with Second Floor Options that Fill In Open to Below Area (Adds 0 Sq. Ft. to Main Floor)



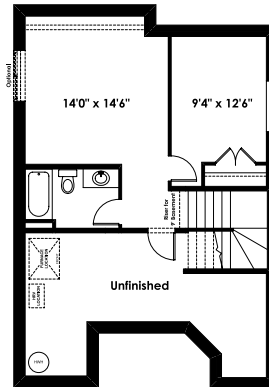
Partial Main Floor Plan with Optional Interior Fireplace (Adds 0 Sq. Ft. to Main Floor)



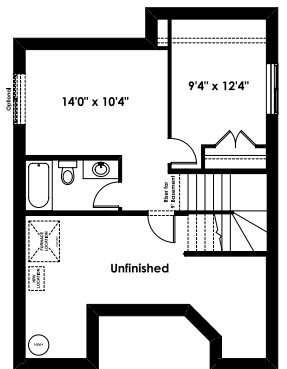
Optional Basement Room Layout 496 Sq. Ft. (Finished)



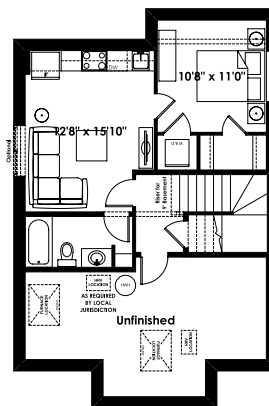
Optional Basement Room Layout for Optional Nook Extension 560 Sq. Ft. (Finished)



Optional Basement Room Layout for Optional Nook Extension and Optional Extended Garage 480 Sq. Ft. (Finished)

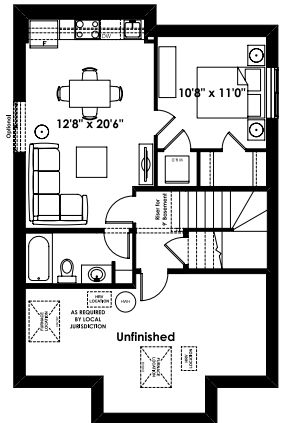


Optional Basement Room Layout for Optional Extended Garage 416 Sq. Ft. (Finished)



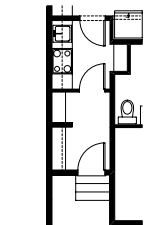
Optional Basement Suite Layout 495 Sq. Ft. (Finished Area; Must Add Optional Side Entry)

BASEMENT SUITE MAY NOT CONFORM TO ALL MINICAPTURES; LAND USE BY-LAW & CODE MUST BE REVIEWED PRIOR TO ACCEPTANCE

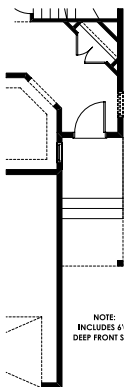


Optional Basement Suite Layout for Optional Nook Extension 559 Sq. Ft. (Finished Area; Must Add Optional Side Entry)

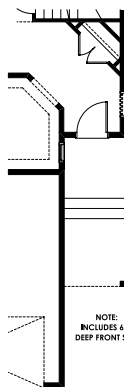
BASEMENT SUITE MAY NOT CONFORM TO ALL MINICAPTURES; LAND USE BY-LAW & CODE MUST BE REVIEWED PRIOR TO ACCEPTANCE



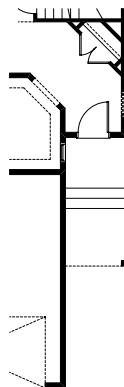
Partial Main Floor Plan with Optional Spice Kitchen for Use with Main Floor Bedroom & 3 Piece Bathroom (Adds 24 Sq. Ft. to Main Floor; Adds 1'-0" to Garage Length)



Partial Main Floor Plan for Hawthorne - Aspen Elevations (Adds 0 Sq. Ft. to Main Floor)



Partial Main Floor Plan for Hawthorne - Lanark Elevations (Adds 0 Sq. Ft. to Main Floor)



Partial Main Floor Plan for Hawthorne - Vermillion Elevations (Adds 0 Sq. Ft. to Main Floor)

ADDITIONAL OPTIONS

24'

THE RIDGEWAY

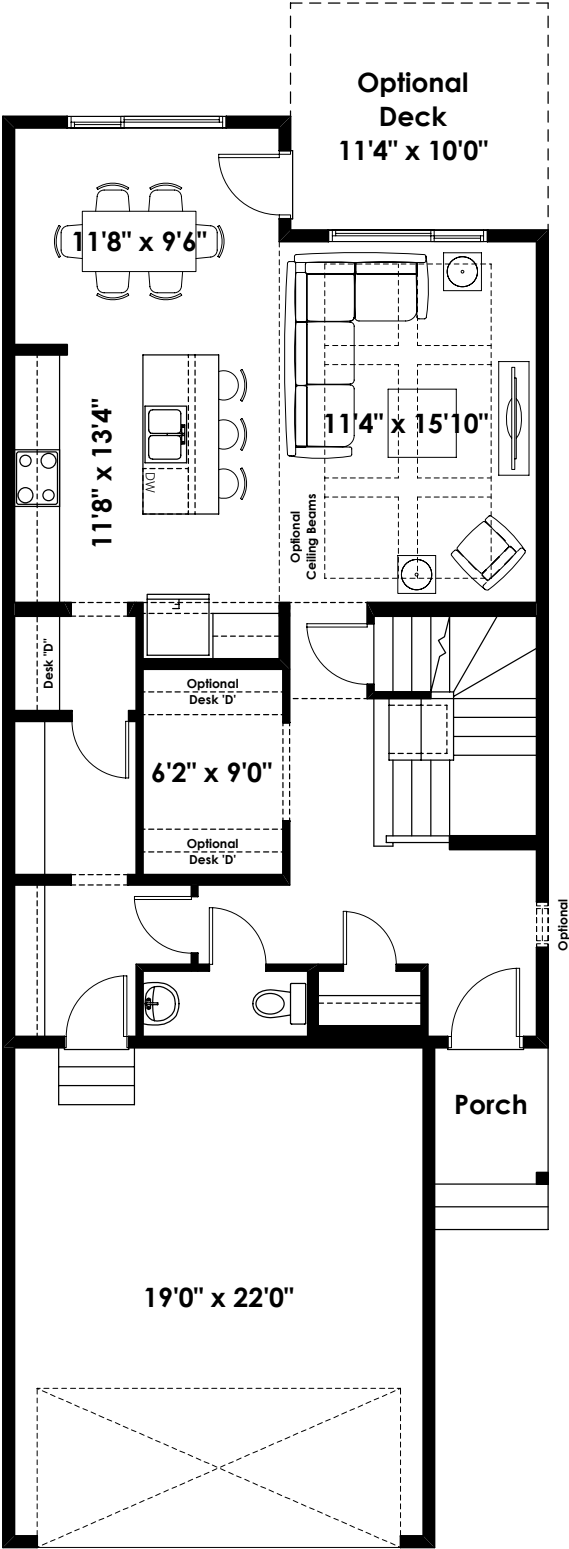
2,136+ SQ FT | 3 BED | 2.5 BATH



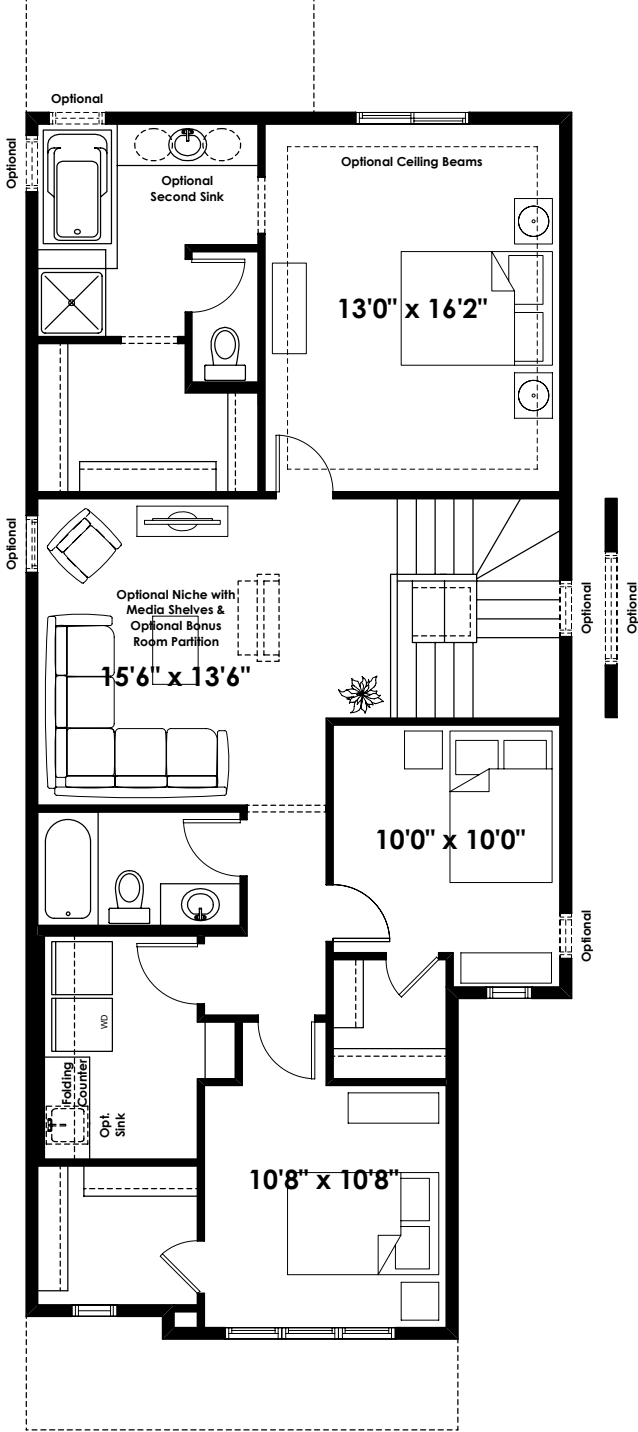
BETTER VALUE BY DESIGN
SINCE 1978 | HOMESBYAVI.COM

Homes by **AVI**

BASE FLOOR PLAN

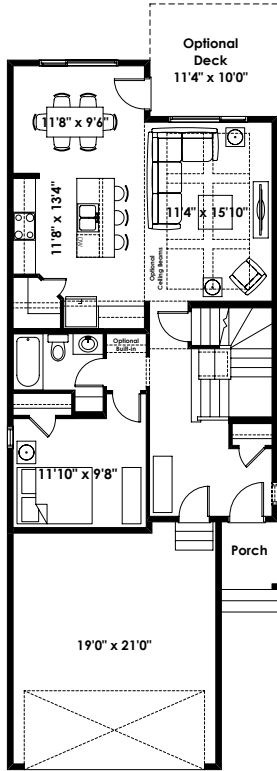


MAIN
927 SQ FT



UPPER
1,209 SQ FT

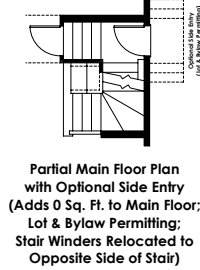
FLOOR PLAN OPTIONS



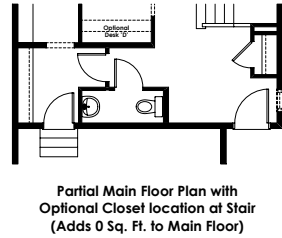
Main Floor Plan with Optional Main Floor Bedroom & 3 Piece Ensuite for Ridgeway - Base Elevation
(Adds 13 Sq. Ft. to Main Floor)



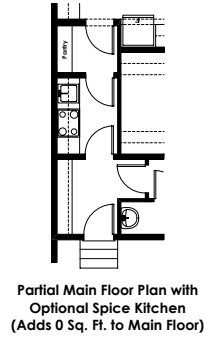
Partial Main Floor Plan with Optional Finished Stair to Basement with Opening
(Adds 0 Sq. Ft. to Main Floor; Must Add 58 Sq. Ft. of Finished Basement Area Minimum)



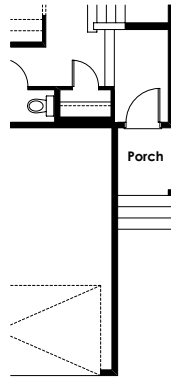
Partial Main Floor Plan with Optional Side Entry
(Adds 0 Sq. Ft. to Main Floor; Lot & Bylaw Permitting; Stair Winders Relocated to Opposite Side of Stair)



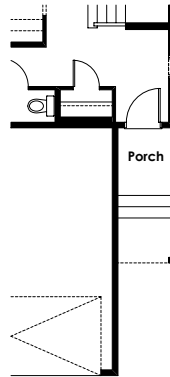
Partial Main Floor Plan with Optional Closet location at Stair
(Adds 0 Sq. Ft. to Main Floor)



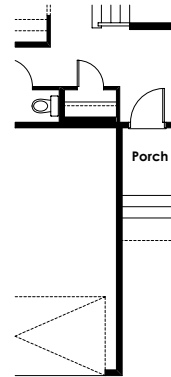
Partial Main Floor Plan with Optional Spice Kitchen
(Adds 0 Sq. Ft. to Main Floor)



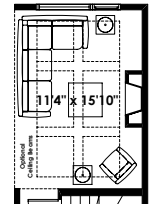
Partial Main Floor Plan with Optional Dropped Entry
Ridgeway - Southfork Elevations
(Adds 0 Sq. Ft. to Main Floor)



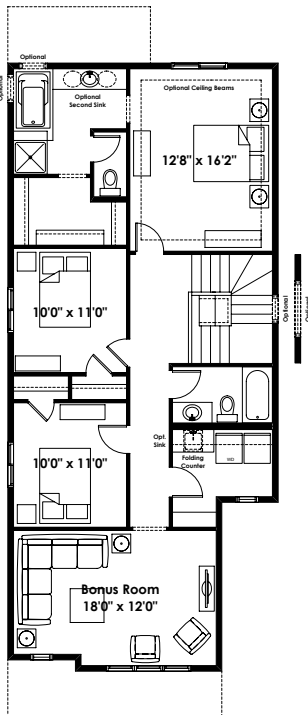
Partial Main Floor Plan for Ridgeway - Lanark Elevations
(Adds 0 Sq. Ft. to Main Floor)



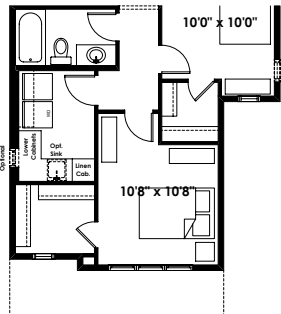
Partial Main Floor Plan for Ridgeway - Vermilion Hill Elevations
(Adds 0 Sq. Ft. to Main Floor)



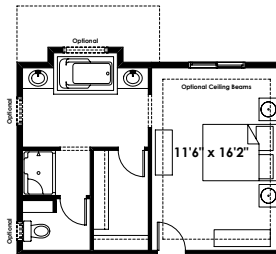
Partial Main Floor Plan with Optional Interior Fireplace
(Adds 0 Sq. Ft. to Main Floor)



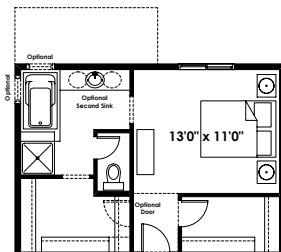
Optional Second Floor Plan with Front Bonus Room for Ridgeway - Base Elevation
(Adds 0 Sq. Ft. to Second Floor)



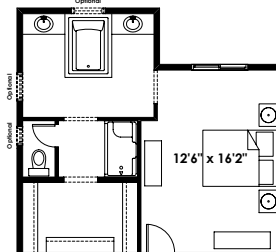
Partial Second Floor Plan with Optional Laundry Room Layout
(Adds 0 Sq. Ft. to Second Floor)



Partial Second Floor Plan with Optional Alternate Ensuite Layout #1
(Adds 9 Sq. Ft. to Second Floor)



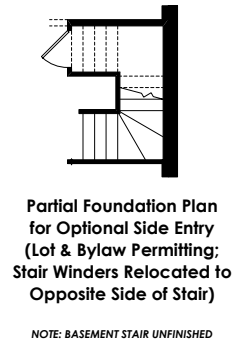
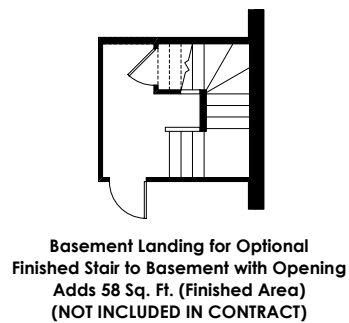
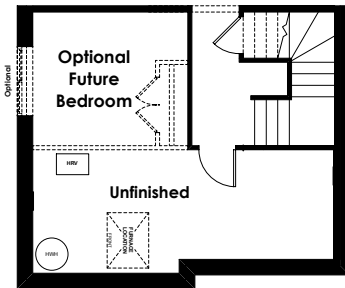
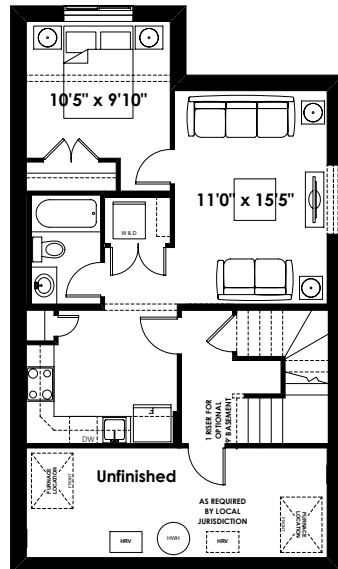
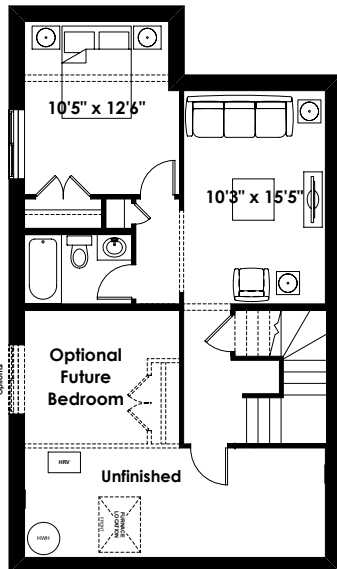
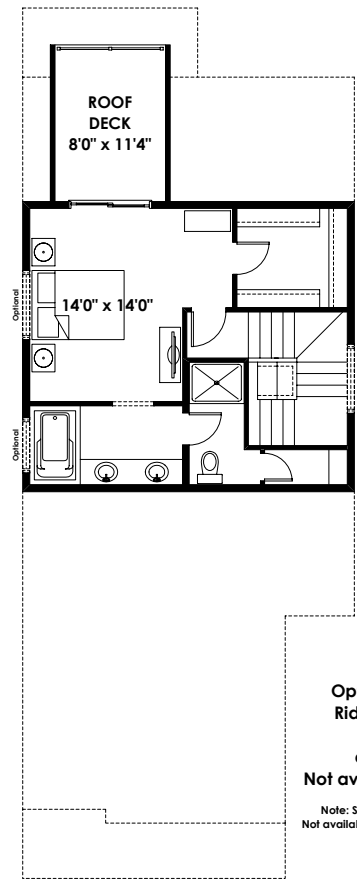
Partial Second Floor Plan with Optional Second Bedroom 1 Closet
(Adds 0 Sq. Ft. to Second Floor)



Partial Second Floor Plan with Optional Alternate Ensuite Layout #2
(Adds 63 Sq. Ft. to Second Floor)

**ADDITIONAL
OPTIONS**

FLOOR PLAN OPTIONS



Prices are subject to change without notice. Actual floor plan, elevation, and square footage may not be exactly as shown. Square footage is measured to Alberta Building Code (ABC) regulations. Builder reserves the right to make changes without notice. E&OE.

Homes by **AVI**

26'

THE ROSEMONT

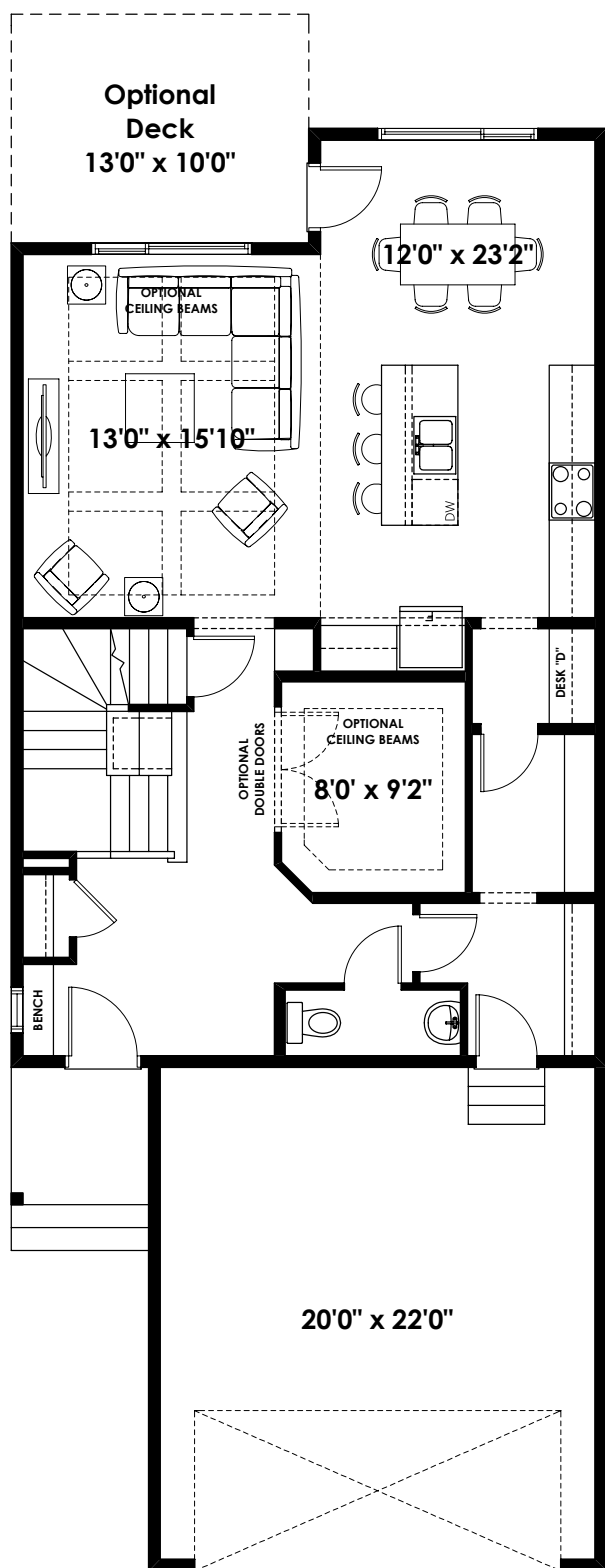
2,243+ SQ FT | 3 BED | 2.5 BATH



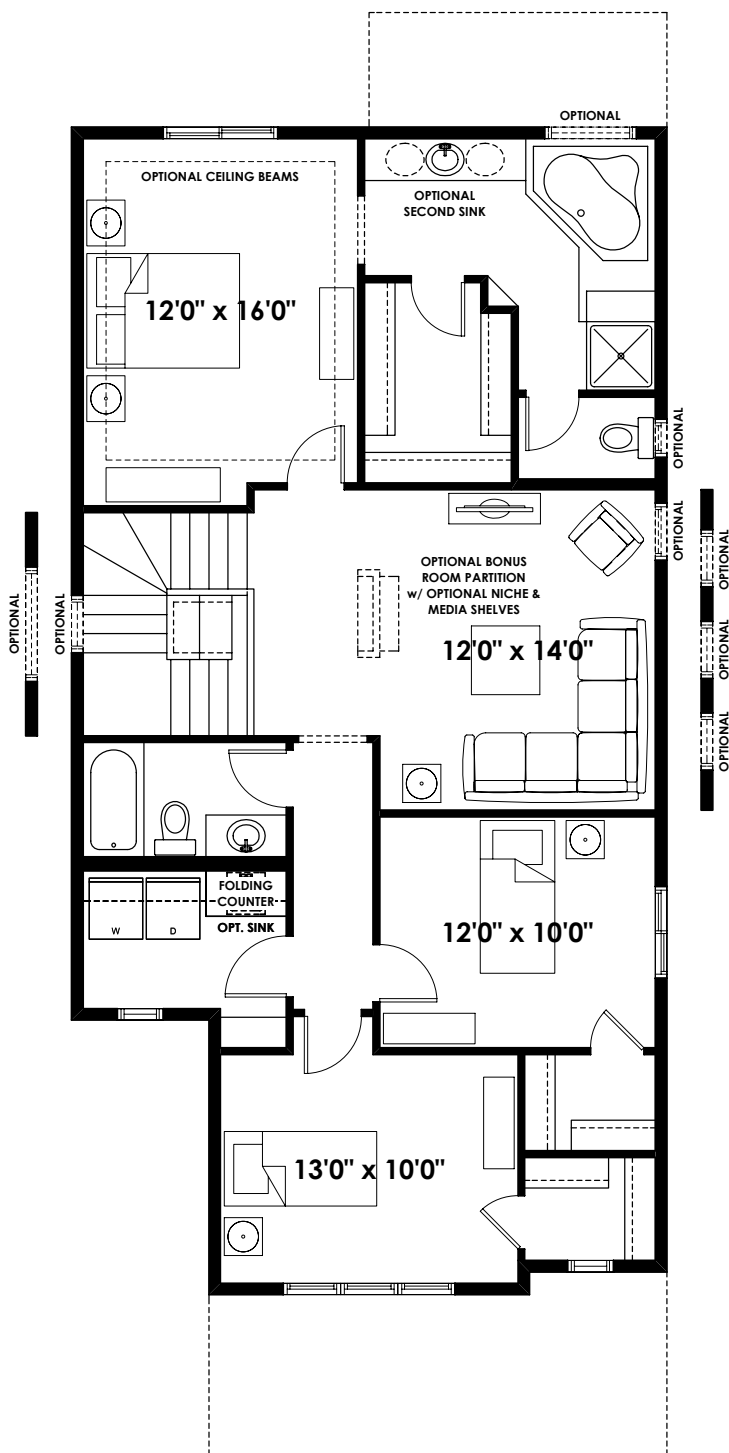
BETTER VALUE BY DESIGN
SINCE 1978 | HOMESBYAVI.COM

Homes by **AVI**

BASE FLOOR PLAN

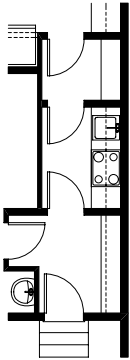


MAIN
1,001 SQ FT

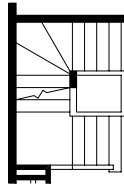


UPPER
1,242 SQ FT

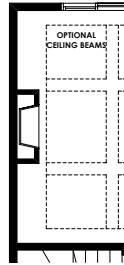
FLOOR PLAN OPTIONS



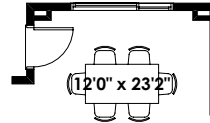
Partial Main Floor Plan with
Optional Spice Kitchen
(Adds 0 Sq. Ft. to Main Floor)



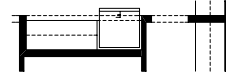
Partial Main Floor Plan with
Optional Finished Stair to
Basement with Opening
(Adds 0 Sq. Ft. to Main Floor;
Must Add 60 Sq. Ft. of Finished
Basement Area Minimum)



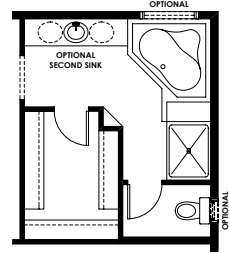
Partial Main Floor Plan with
Optional Interior Fireplace
(Adds 0 Sq. Ft. to Main Floor)



Eating Area For Use With
Optional Upgraded Ensuite #4
(Adds 0 Sq. Ft. to Main Floor)

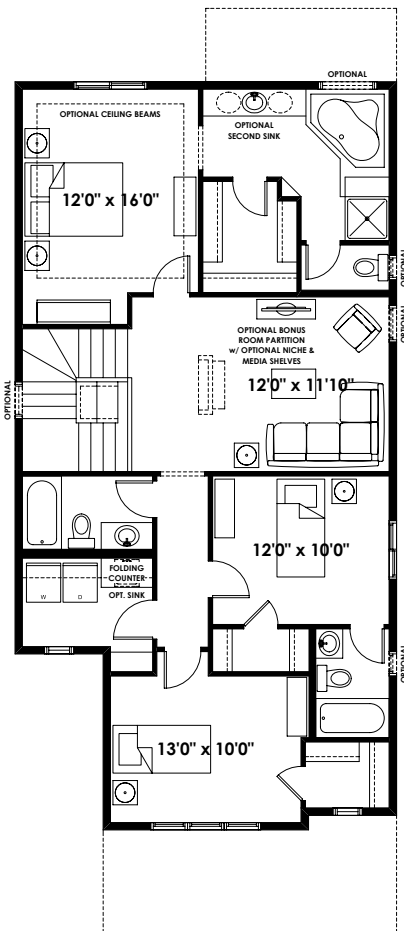


Partial Main Floor Plan with
Optional Cabinet Extension
to Fridge Wall
(Adds 0 Sq. Ft. to Main Floor)

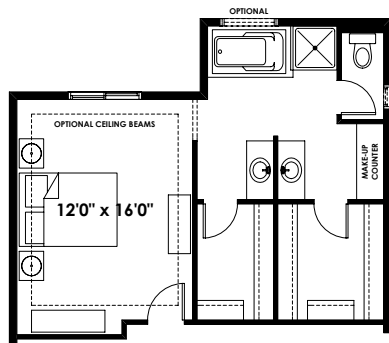


Partial Second Floor Plan with
Optional Upgraded Ensuite #1
(Adds 0 Sq. Ft. to Second Floor)

Not Available with Optional Second Floor
with Ensuite for Bedroom 2

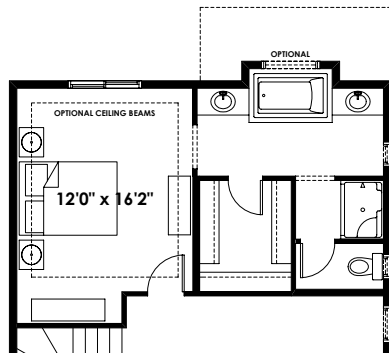


Optional Second Floor Plan
with Ensuite for Bedroom 2
for Rosemont - Base Elevation
(Adds 0 Sq. Ft. to Second Floor)

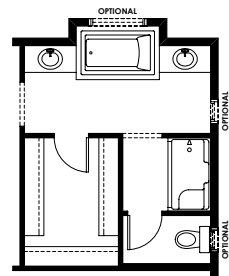


Partial Second Floor Plan with
Optional Upgraded Ensuite #4
(Adds 65 Sq. Ft. to Second Floor)

Not Available with Optional Second Floor
with Ensuite for Bedroom 2

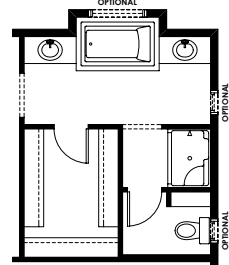


Partial Second Floor Plan with
Optional Upgraded Ensuite
for Use with Optional Second Floor
with Ensuite for Bedroom 2
(Adds 9 Sq. Ft. to Second Floor)



Partial Second Floor Plan with
Optional Upgraded Ensuite #3
(Adds 9 Sq. Ft. to Second Floor)

Not Available with Optional Second Floor
with Ensuite for Bedroom 2

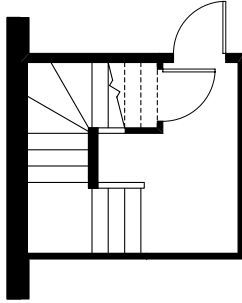


Partial Second Floor Plan with
Optional Upgraded Ensuite #2
(Adds 9 Sq. Ft. to Second Floor)

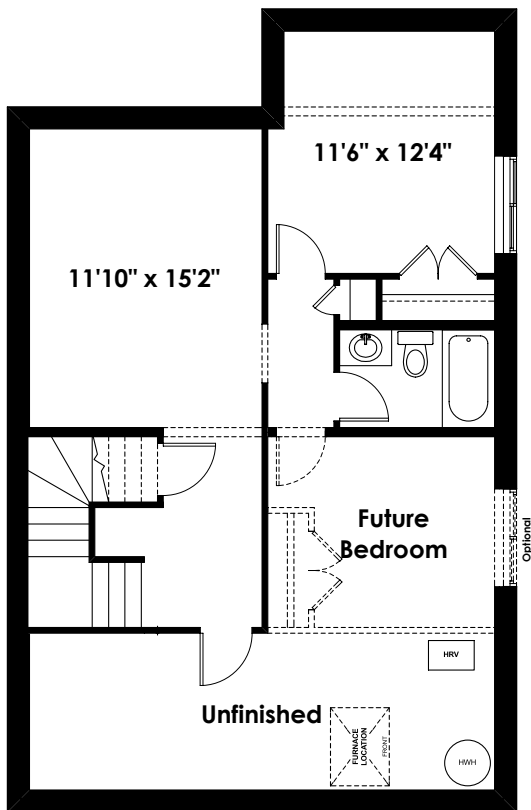
Not Available with Optional Second Floor
with Ensuite for Bedroom 2

ADDITIONAL
OPTIONS

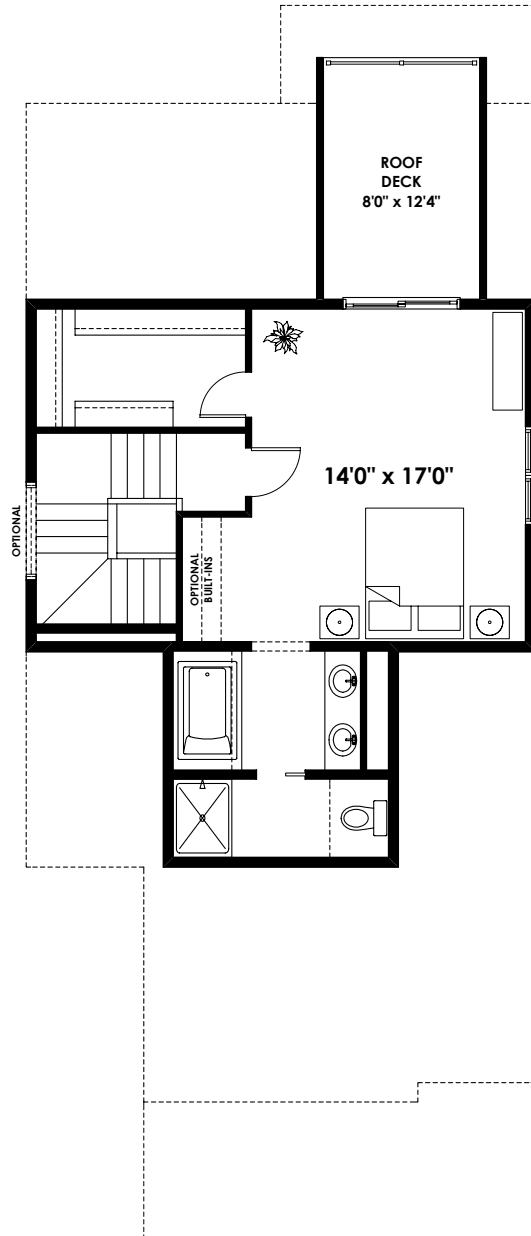
FLOOR PLAN OPTIONS



**Basement Landing for Optional
Finished Stair to Basement with Opening
Adds 60 Sq. Ft. (Finished Area)
(Not Included in Contract)**



**Optional Basement Room Layout
527 Sq. Ft. (Finished Area)**



**Optional Third Floor Plan for
Rosemont - Base Elevation
(Adds 589 Sq. Ft.)**

**Note: Subject to Approval of Selected Elevation
Not available with Optional Upgraded Ensuite #4**

24'

THE JEFFERSON

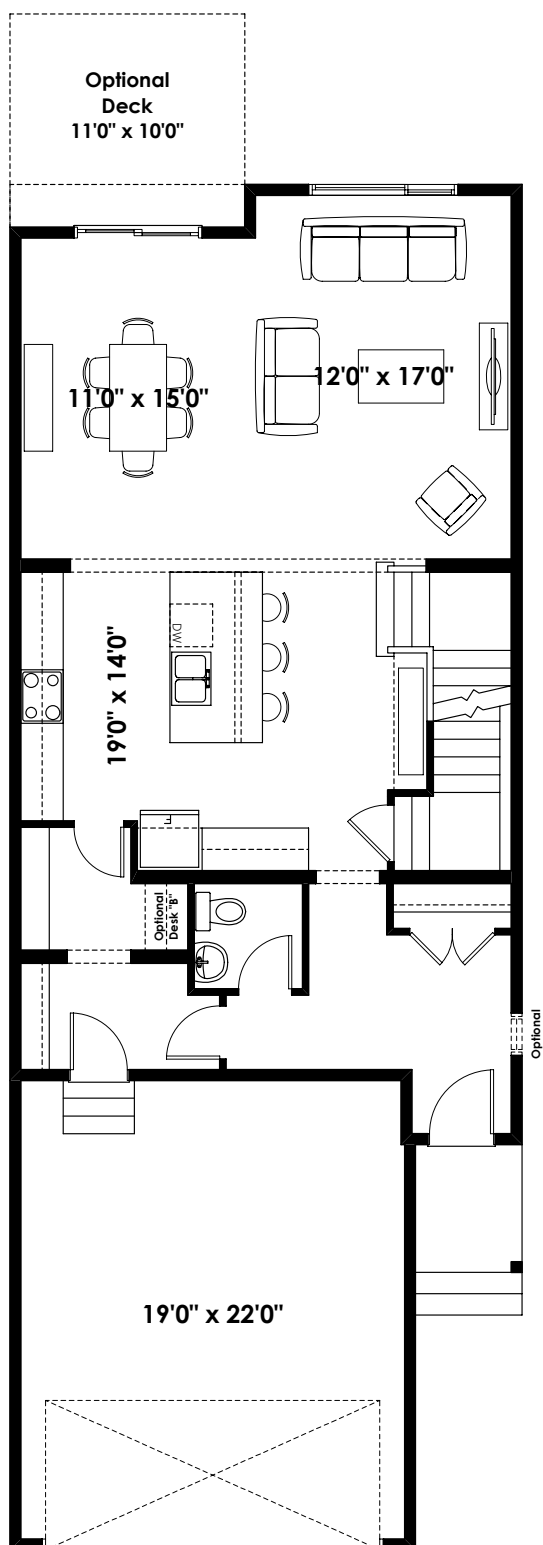
2,343+ SQ FT | 3 BED | 2.5 BATH



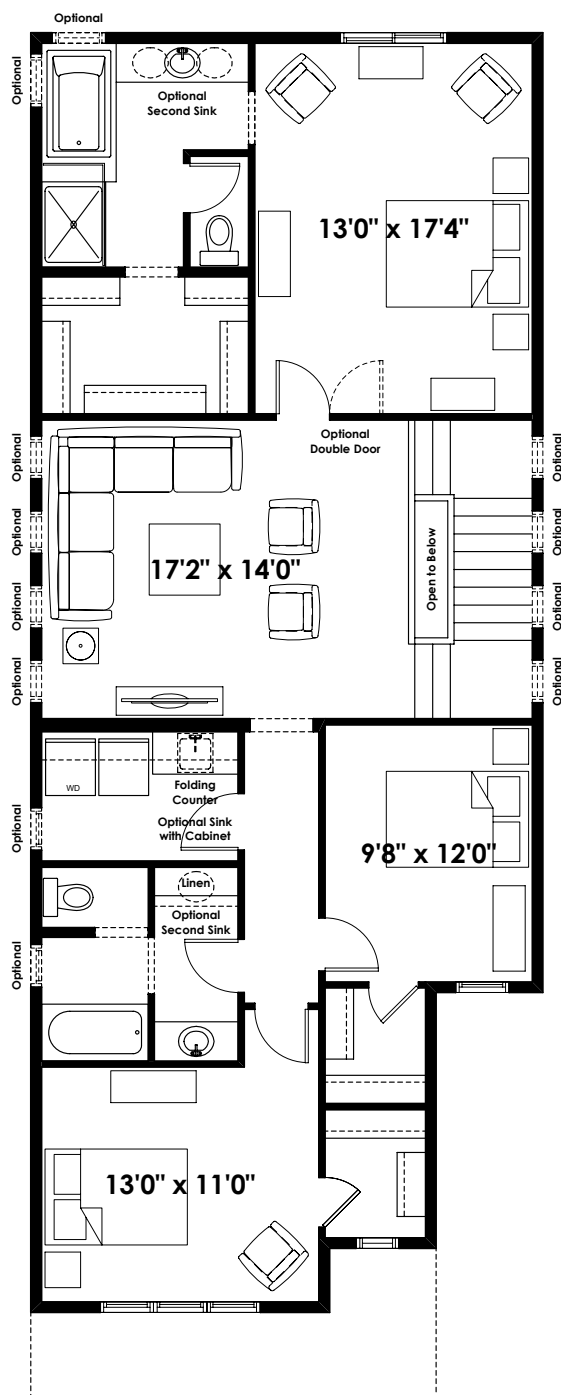
BETTER VALUE BY DESIGN
SINCE 1978 | HOMESBYAVI.COM

Homes by **AVI**

BASE FLOOR PLAN

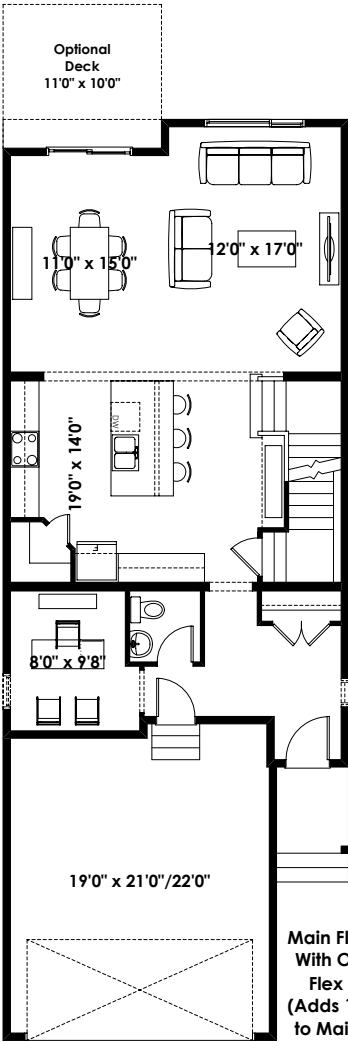


MAIN
1,003 SQ FT

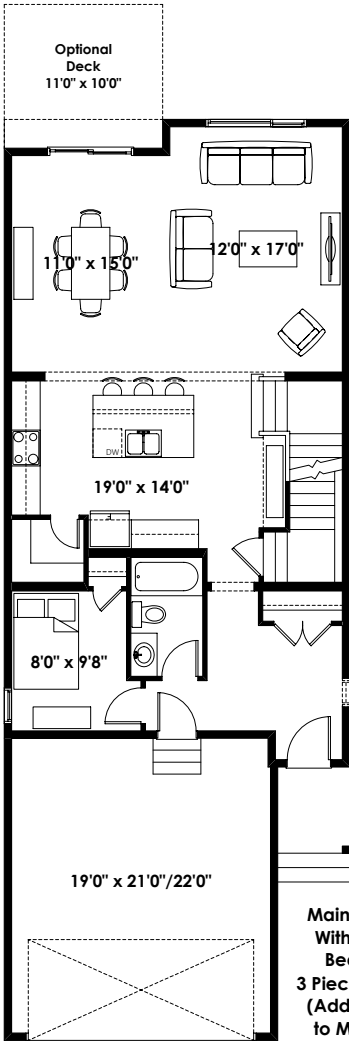


UPPER
1,340 SQ FT

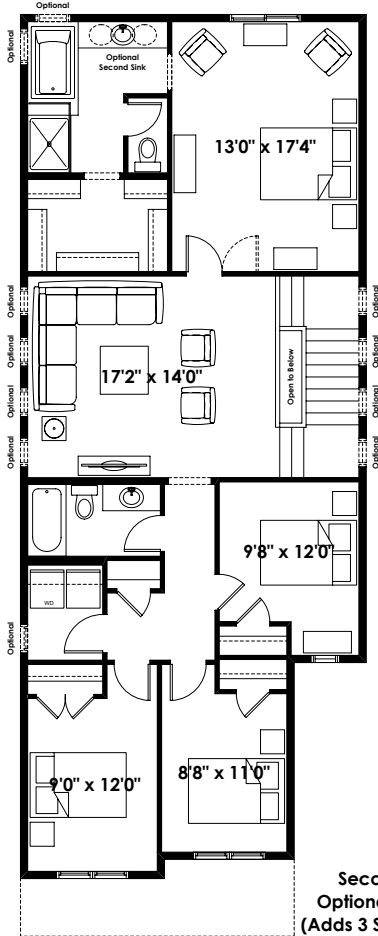
FLOOR PLAN OPTIONS



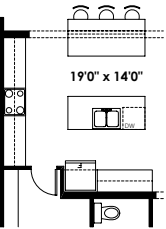
**Main Floor Plan
With Optional
Flex Room
(Adds 10 Sq. Ft.
to Main Floor)**



**Main Floor Plan
With Optional
Bedroom &
3 Piece Bathroom
(Adds 18 Sq. Ft.
to Main Floor)**



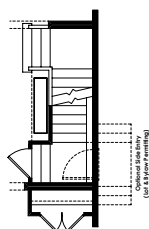
**Second Floor Plan with
Optional 4 Bedroom Layout
(Adds 3 Sq. Ft. to Second Floor)**



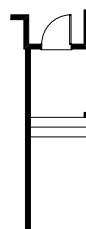
**Partial Main Floor Plan with
Optional Kitchen Islands
(Adds 0 Sq. Ft. to Main Floor)**



**Partial Main Floor Plan with
Optional Finished Stair to Basement
(Adds 0 Sq. Ft. to Main Floor)**



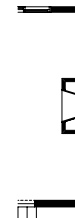
**Partial Main Floor Plan
with Optional Side Entry
(Adds 0 Sq. Ft. to Main Floor)**



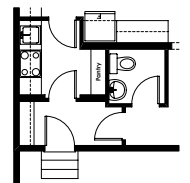
**Partial Main Floor Plan for
Vermilion Hill Elevations
(Adds 0 Sq. Ft. to Main Floor)**



**Partial Main Floor Plan
for Lanark Elevation
(Adds 0 Sq. Ft. to Main Floor)**



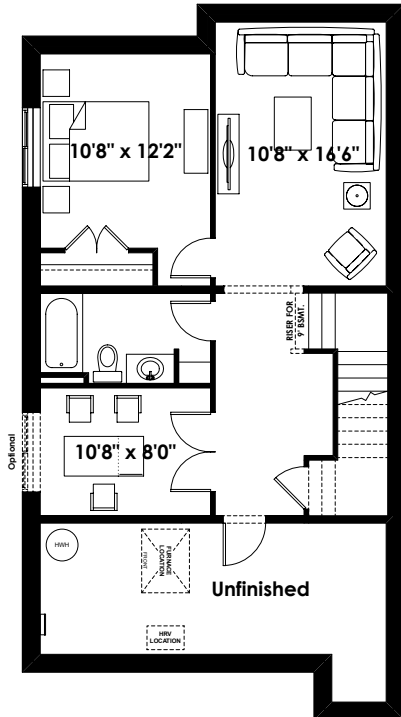
**Partial Main Floor Plan with
Optional Interior Fireplace
(Adds 0 Sq. Ft. to Main Floor)**



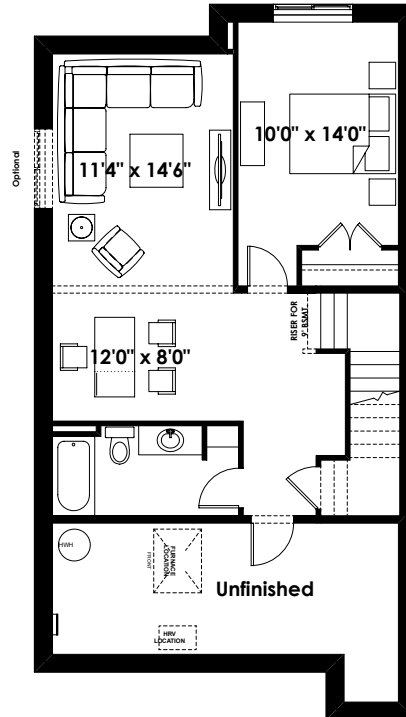
**Partial Main Floor Plan with
Optional Spice Kitchen
(Adds 0 Sq. Ft. to Main Floor)**

ADDITIONAL OPTIONS

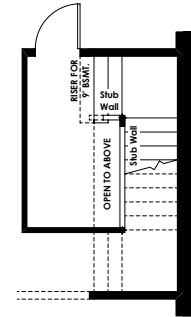
FLOOR PLAN OPTIONS



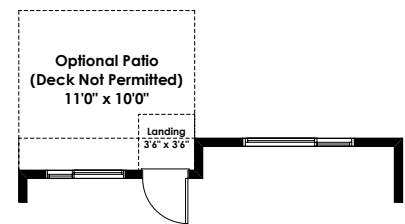
Optional Basement Room Layout
638 Sq. Ft. (Finished Area)



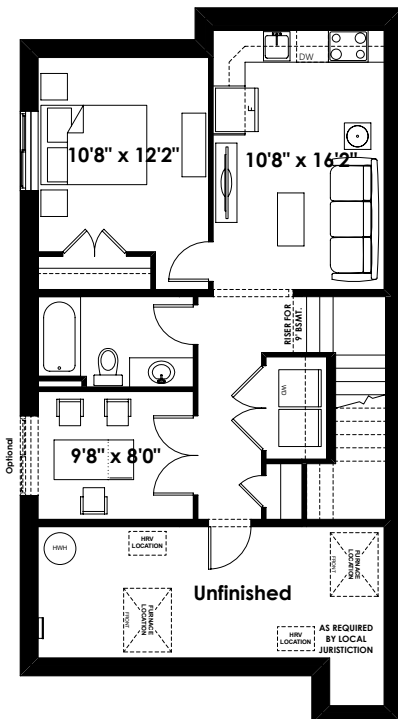
Alternate Optional Basement Room Layout
638 Sq. Ft. (Finished Area)



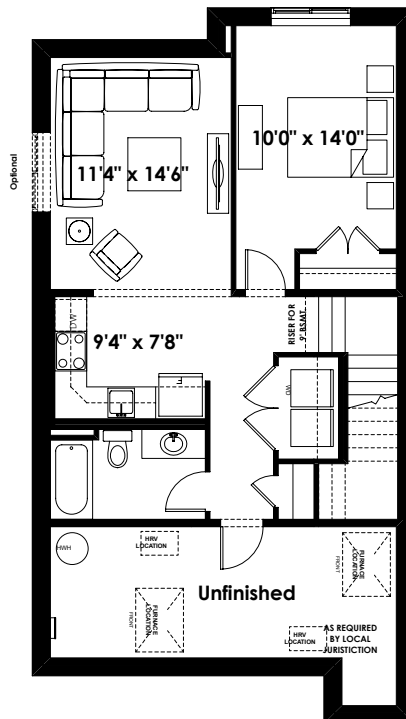
**Basement Landing for Optional
Finished Stair to Basement with
Opening (Must Add 60 Sq. Ft. of Finished
Basement Area Minimum)**



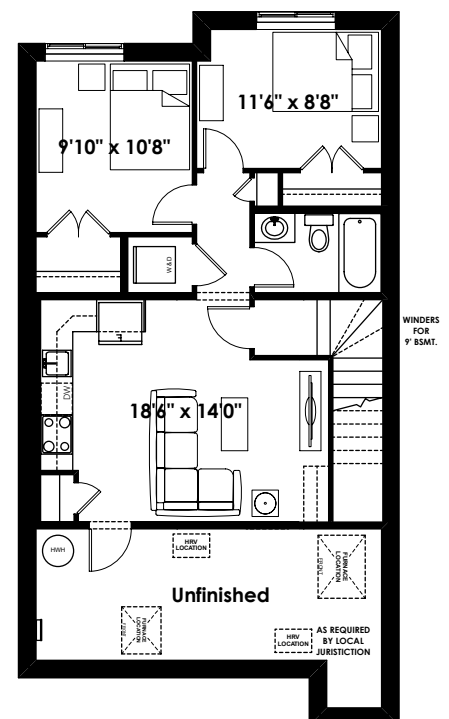
**Partial Main Floor Plan
for Optional 2 Bedroom
Basement Suite Layout
(Adds 0 Sq. Ft. to Main Floor)**



Optional Basement Suite Layout
638 Sq. Ft. (Finished Area)



Alternate Optional Basement Suite Layout
638 Sq. Ft. (Finished Area)



Optional 2 Bedroom Basement Suite Layout
648 Sq. Ft. (Finished Area;
Must Add Optional Side Entry)

24'

THE ANDRE

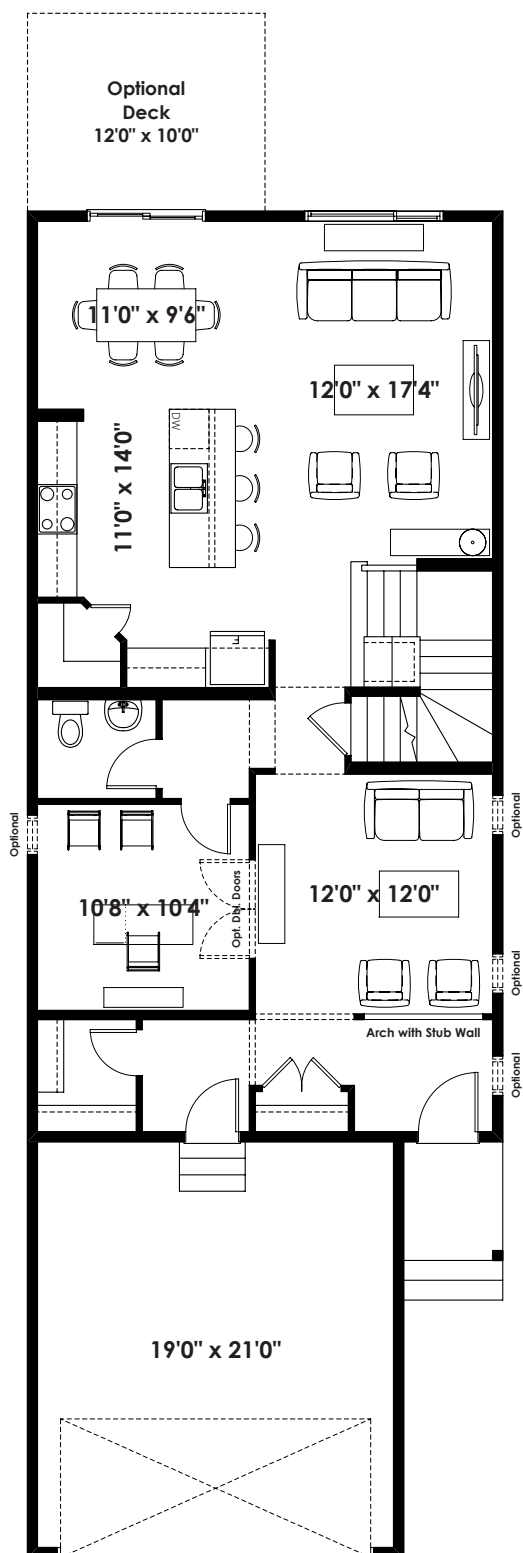
2,453+ SQ FT | 3 BED | 2.5 BATH



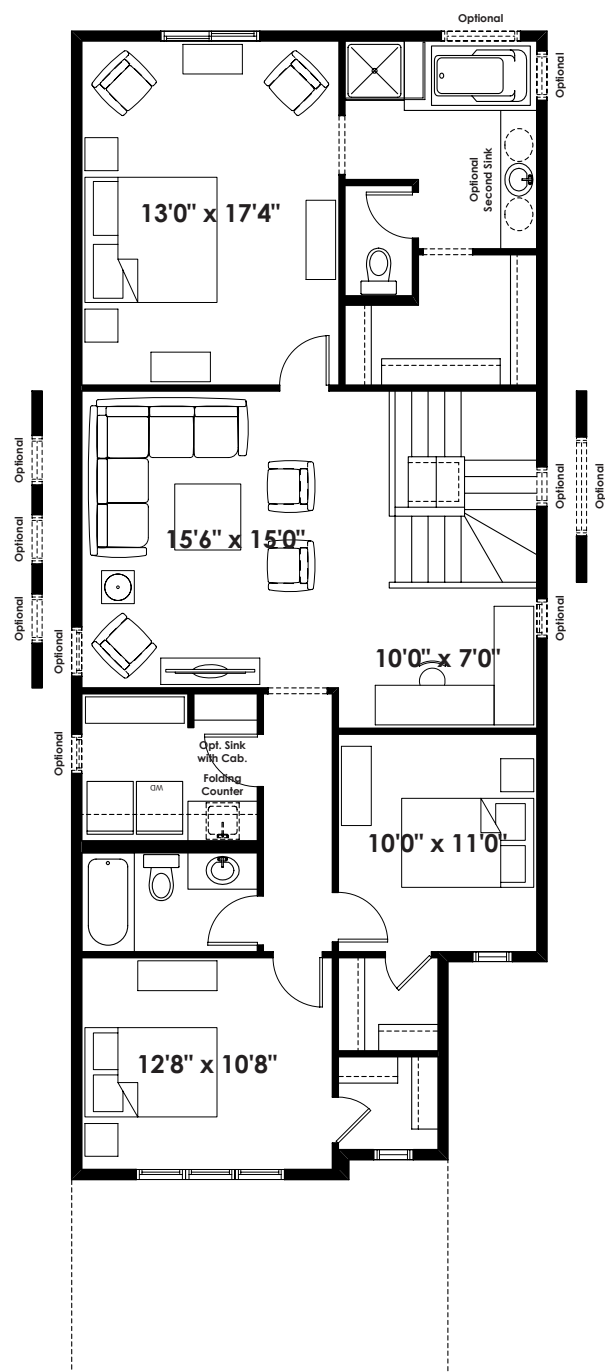
BETTER VALUE BY DESIGN
SINCE 1978 | HOMESBYAVI.COM

Homes by **AVI**

BASE FLOOR PLAN

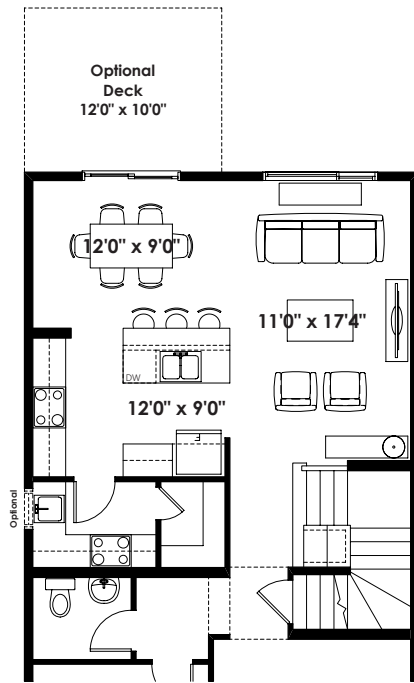


MAIN
1,128 SQ FT

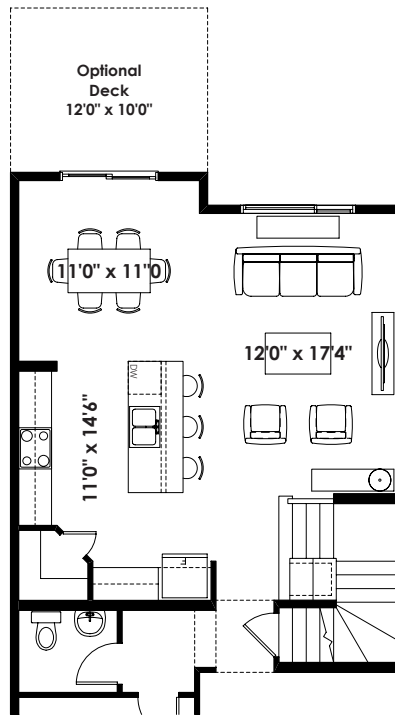


UPPER
1,325 SQ FT

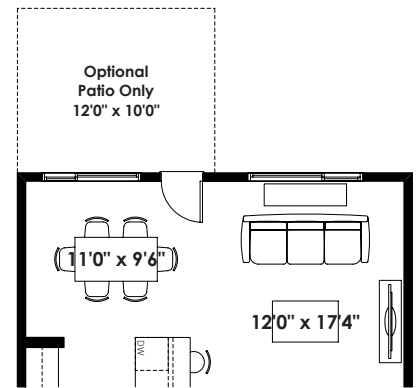
FLOOR PLAN OPTIONS



Partial Main Floor Plan
with Optional Spice Kitchen
(Adds 0 Sq. Ft. to Main Floor)



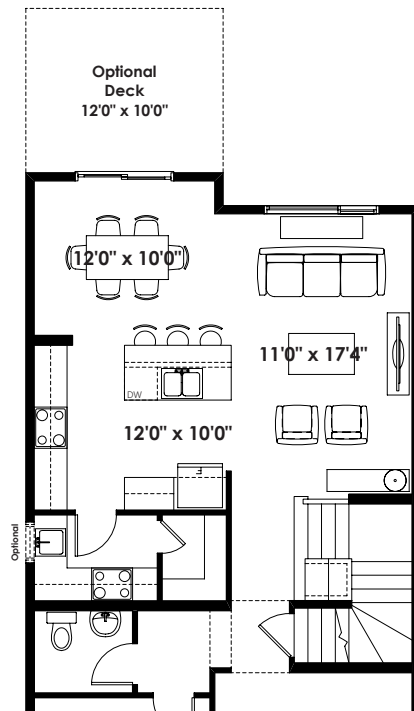
Partial Main Floor Plan with
Optional Eating Area Extension
(Adds 24 Sq. Ft. to Main Floor)



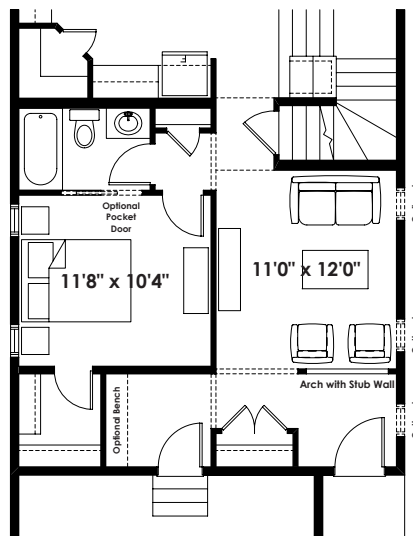
Partial Main Floor Plan
for Optional Two Bedroom
Basement Suite Layout
(Adds 0 Sq. Ft. to Main Floor)



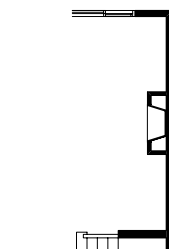
Partial Main Floor Plan for
Lanark Elevations
(Adds 0 Sq. Ft. to Main Floor)



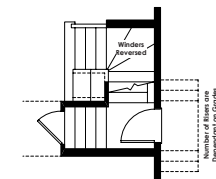
Partial Main Floor Plan
with Optional Spice Kitchen
with Optional Eating Area Extension
(Adds 24 Sq. Ft. to Main Floor)



Partial Main Floor Plan with
Optional Bedroom & Bathroom
(Adds 0 Sq. Ft. to Main Floor)



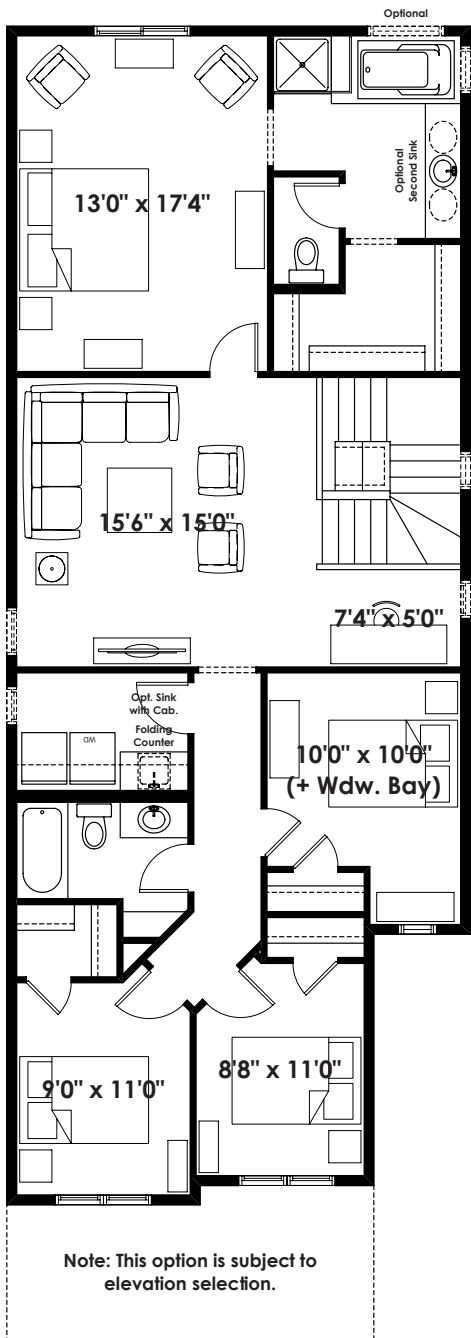
Partial Main Floor Plan with
Optional Interior Fireplace
(Adds 0 Sq. Ft. to Main Floor)



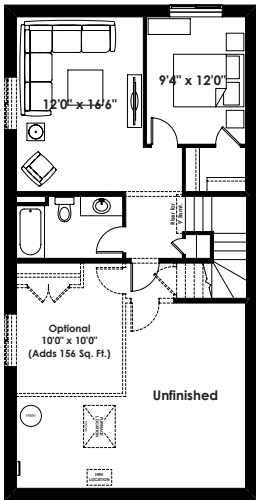
Partial Main Floor Plan
with Optional Side Entry
(Adds 0 Sq. Ft. to Main Floor;
Lot & Bylaw Permitting)

ADDITIONAL
OPTIONS

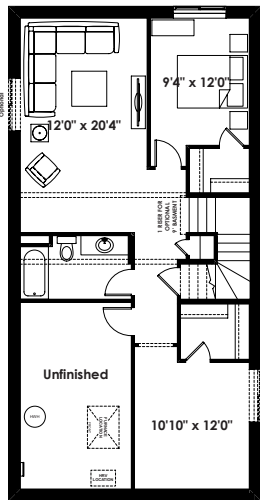
FLOOR PLAN OPTIONS



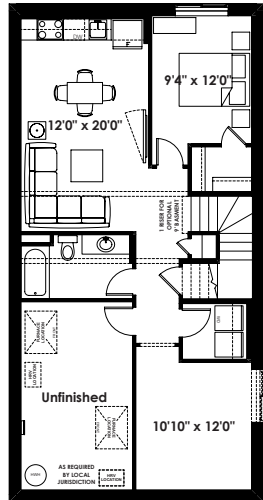
**Second Floor Plan with
Optional 4 Bedroom Layout
(Adds 53 Sq. Ft. to Second Floor)**



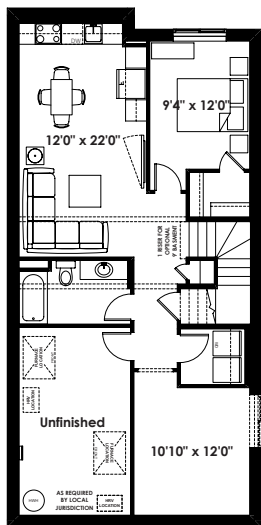
Optional Basement Room Layout
509 Sq. Ft. (Finished Area)



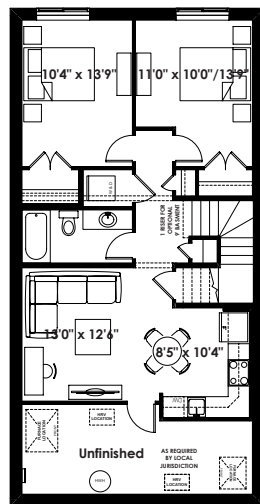
Optional Alternate Basement Room Layout
780 Sq. Ft. (Finished Area)



Optional Basement Suite Layout
780 Sq. Ft. (Finished Area;
Must Add Optional Side Entry)



**Optional Basement Suite Layout for
Use With Extended Eating Area Option
802 Sq. Ft. (Finished Area;
Must Add Optional Side Entry)**



**Optional Two Bedroom
Basement Suite Layout
790 Sq. Ft. (Finished Area;
Must Add Optional Side Entry)**

Prices are subject to change without notice. Actual floor plan, elevation, and square footage may not be exactly as shown. Square footage is measured to Alberta Building Code (ABC) regulations. Builder reserves the right to make changes without notice. E&OE.

Homes by **AVI**

30'

THE WESTON

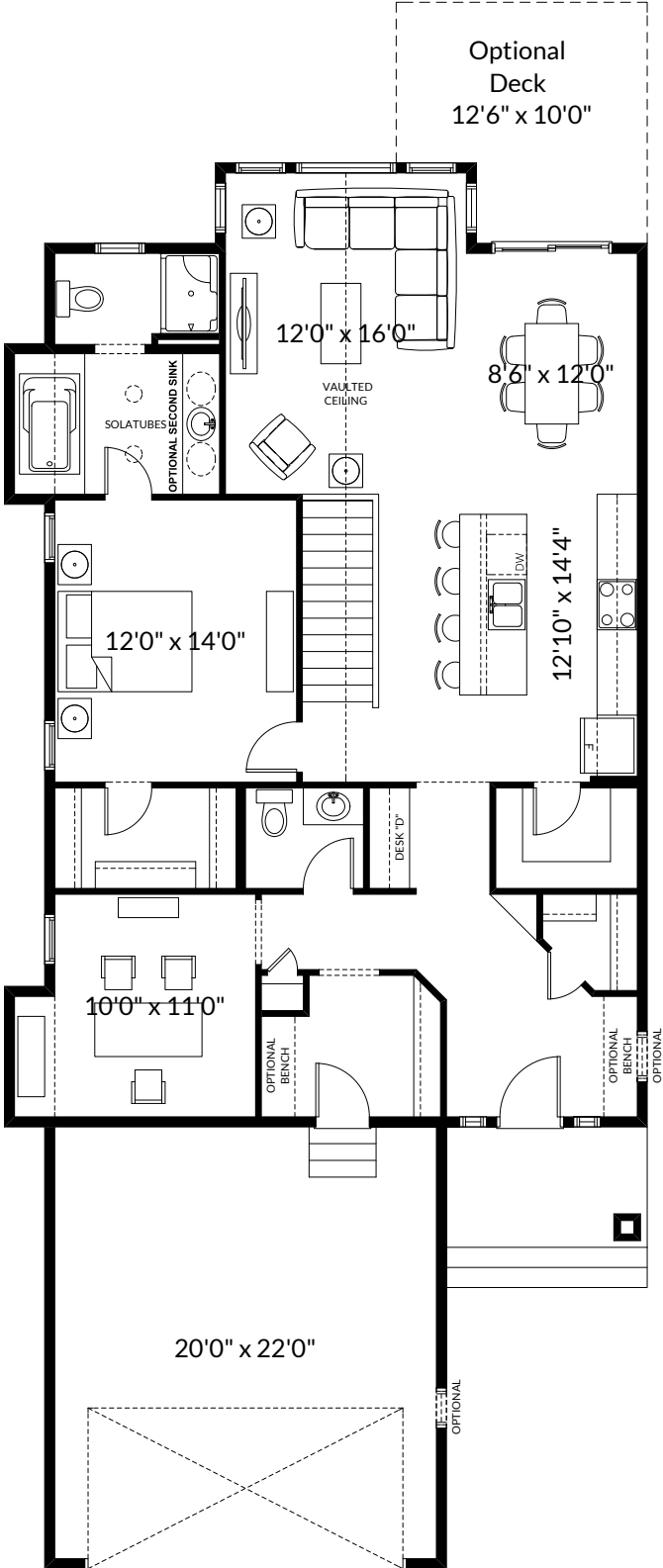
1,402+ SQ FT | 1 BED | 1.5 BATH



BETTER VALUE BY DESIGN
SINCE 1978 | HOMESBYAVI.COM

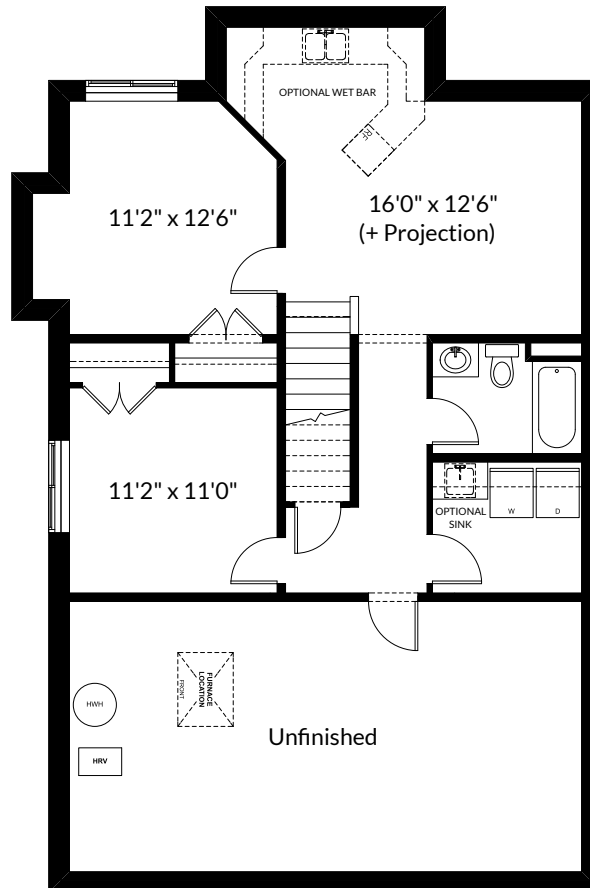
Homes by **AVI**

BASE FLOOR PLAN



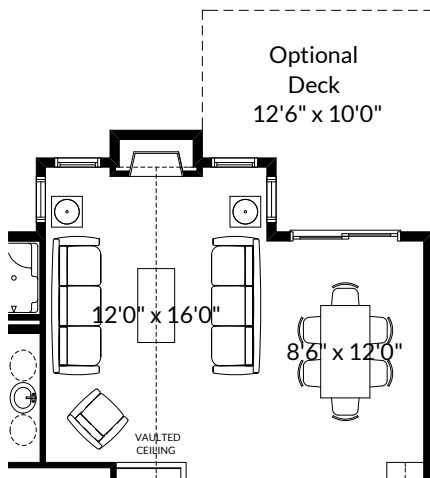
MAIN
1,402 SQ FT

FLOOR PLAN OPTIONS

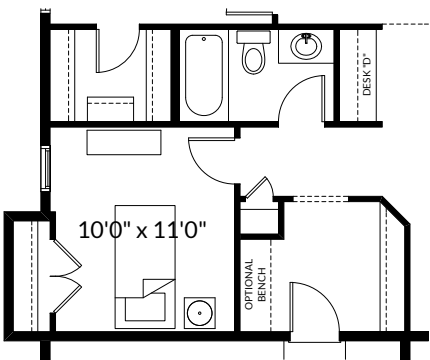


Future Basement Room Layout #2
812 Sq. Ft. (Finished Area)

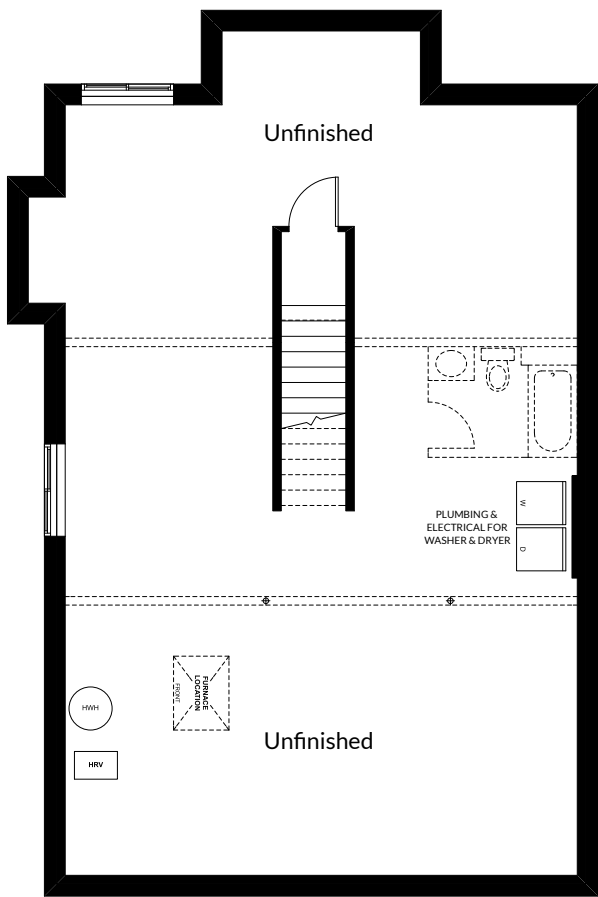
FLOOR PLAN OPTIONS



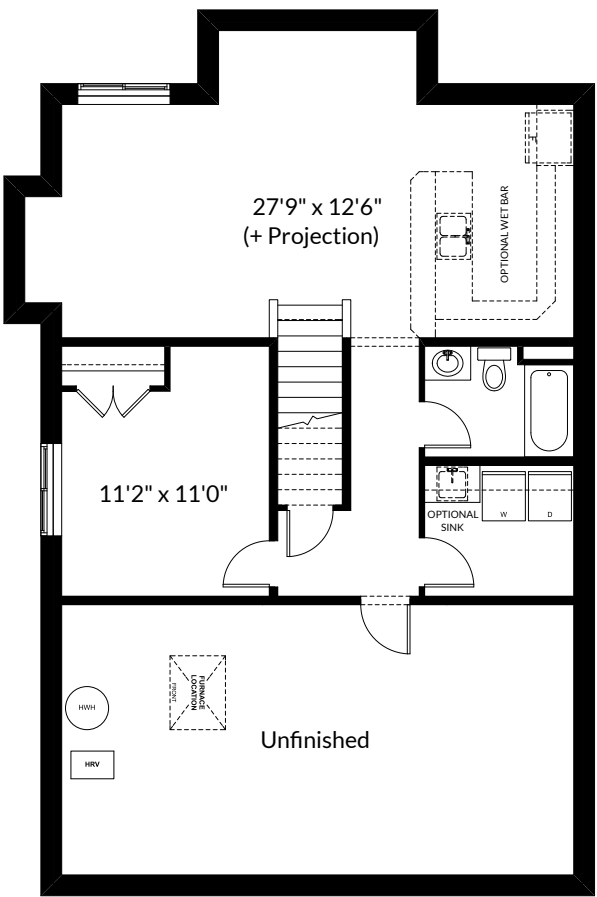
Partial Main Floor Plan with
Optional Projected Fireplace
(Adds 0 Sq. Ft. to Main Floor)



Partial Main Floor Plan with
Optional Second Bedroom
& 3 Piece Bathroom
(Adds 0 Sq. Ft. to Main Floor)



Unfinished Basement Layout
(Finished Stair to Basement Only)



Future Basement Room Layout #1
812 Sq. Ft. (Finished Area)

ADDITIONAL
OPTIONS

28'

THE CALDWELL

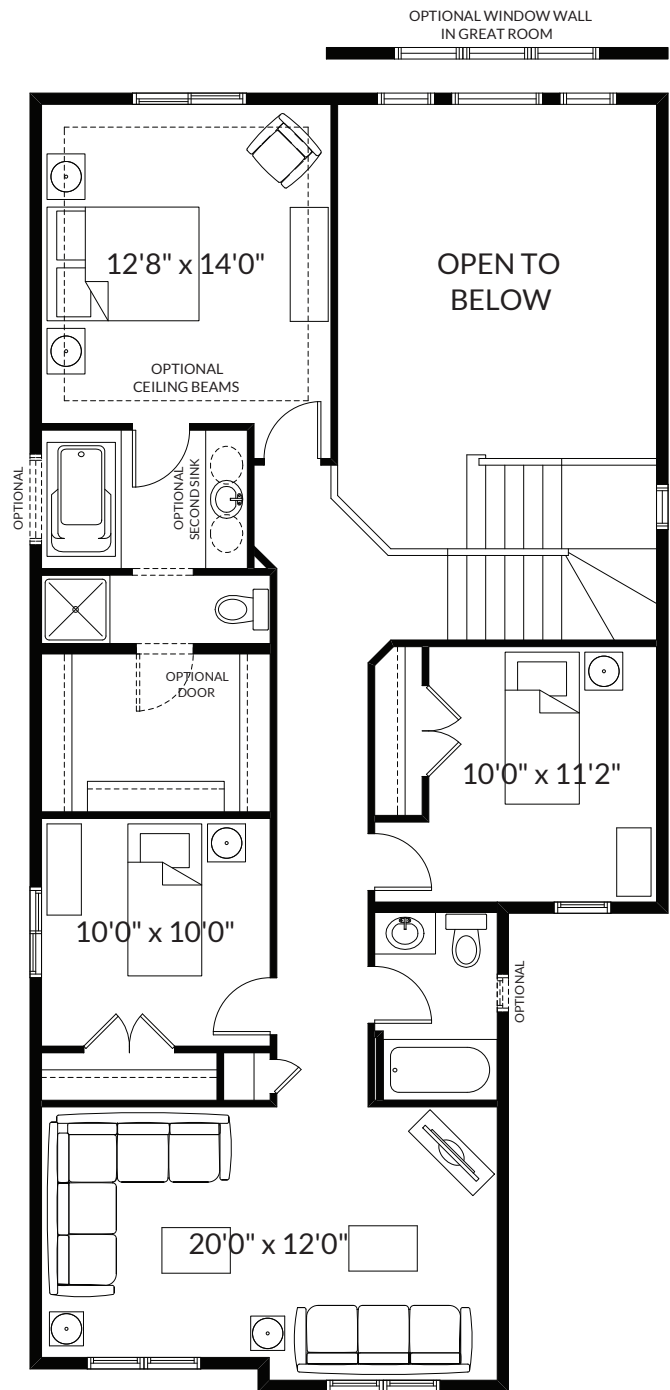
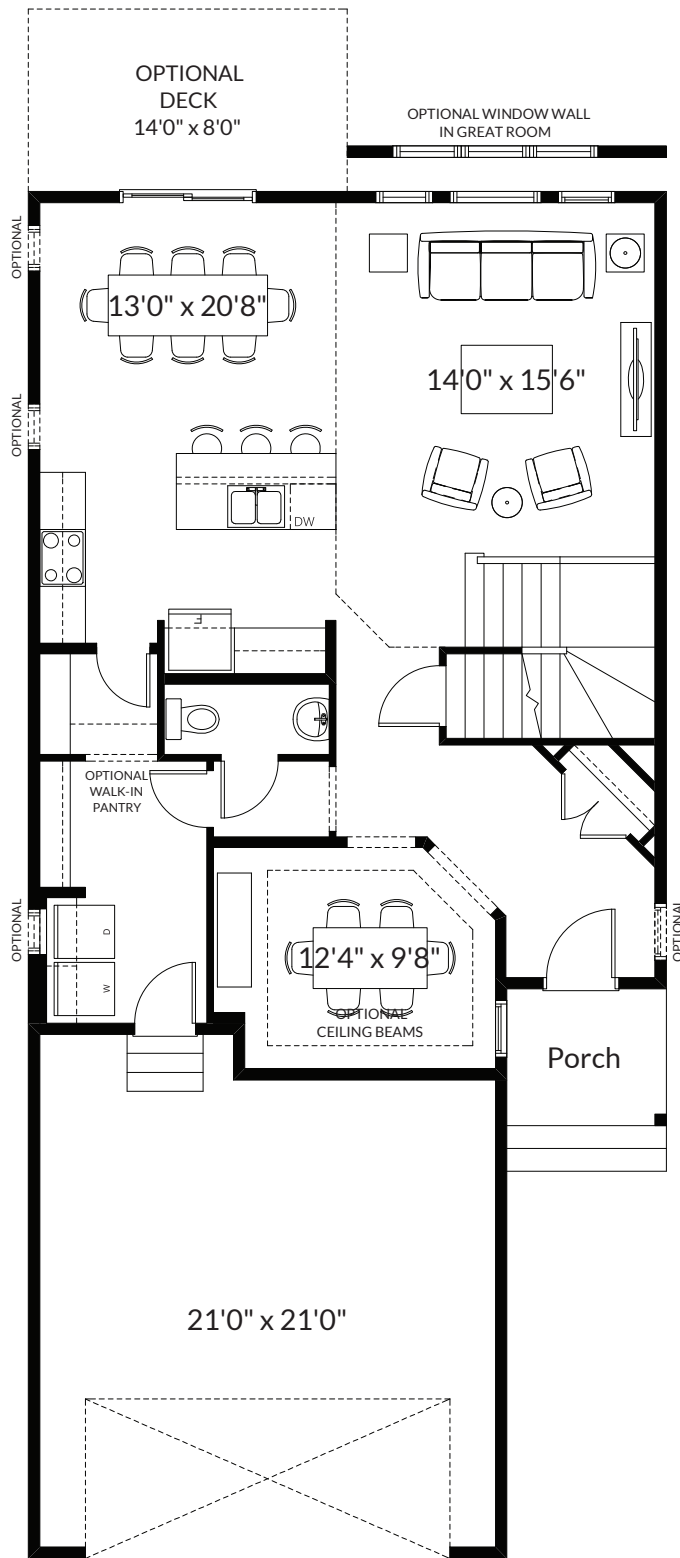
2,248+ SQ FT | 3 BED | 2.5 BATH



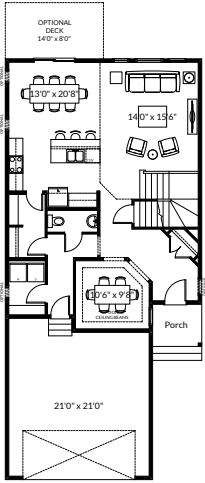
BETTER VALUE BY DESIGN
SINCE 1978 | HOMESBYAVI.COM

Homes by **AVI**

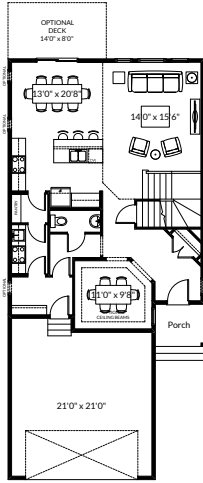
BASE FLOOR PLAN



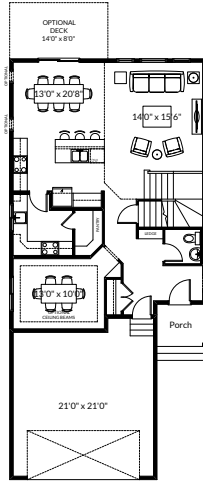
FLOOR PLAN OPTIONS



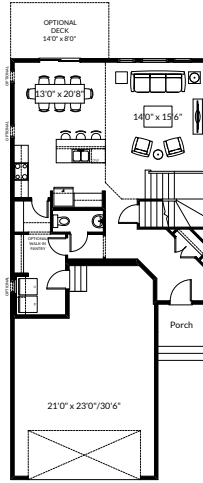
Main Floor Plan with
Optional Laundry Room for
Caldwell - Base Elevation
(Adds 0 Sq. Ft. to Main Floor)



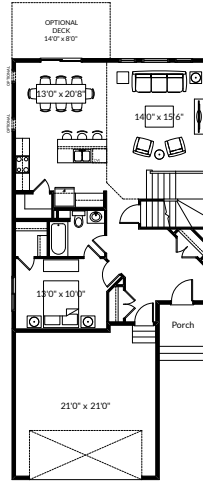
Main Floor Plan with
Optional Spice Kitchen
for Caldwell - Base Elevation
(Adds 0 Sq. Ft. to Main Floor; Laundry
moves to Second Floor or Basement)



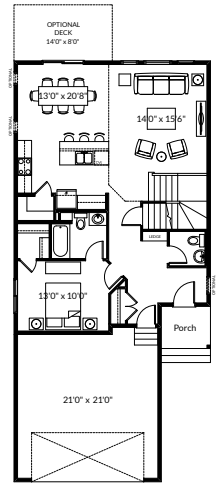
Main Floor Plan with
Optional Expanded Spice Kitchen 2
for Caldwell - Base Elevation
(Adds 4 Sq. Ft. to Main Floor; Laundry
moves to Second Floor or Basement)



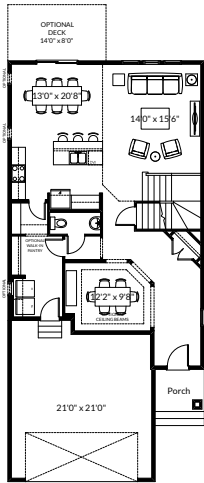
Main Floor Plan with
Optional Extended Garage
for Caldwell - Base Elevation
(Deletes 113 Sq. Ft. from Main Floor;
Deletes Flex Room)



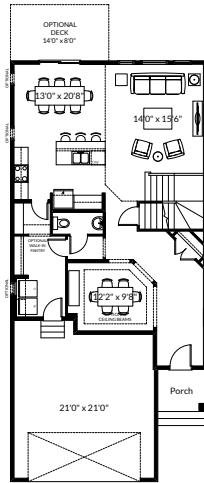
Main Floor Plan with Optional
Main Floor Bedroom with Walk-in
Closet and 3 Piece Ensuite
for Caldwell - Base Elevation
(Adds 11 Sq. Ft. to Main Floor)



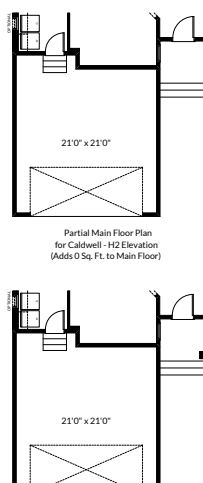
Main Floor Plan with Optional
Main Floor Bedroom with Walk-in Closet,
3 Piece Ensuite and Powder Room
for Caldwell - Base Elevation
(Adds 11 Sq. Ft. to Main Floor)



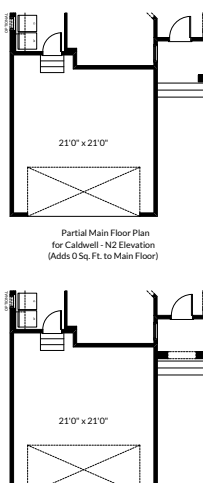
Main Floor Plan for
Caldwell - W1 Elevation
112 Sq. Ft.
(Adds 66 Sq. Ft. to Main Floor)



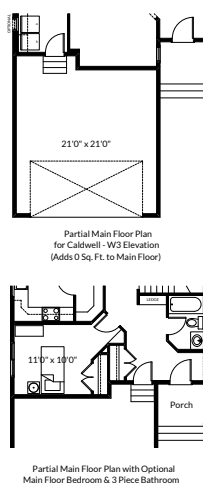
Main Floor Plan for
Caldwell - X1 Elevation
112 Sq. Ft.
(Adds 66 Sq. Ft. to Main Floor)



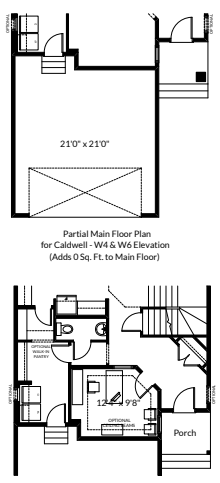
Partial Main Floor Plan
for Caldwell - H2 Elevation
(Adds 0 Sq. Ft. to Main Floor)



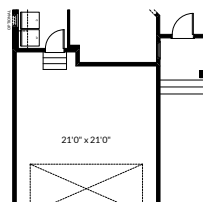
Partial Main Floor Plan
for Caldwell - N2 Elevation
(Adds 0 Sq. Ft. to Main Floor)



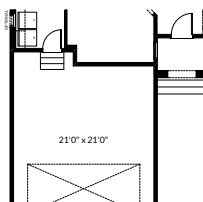
Partial Main Floor Plan
for Caldwell - W3 Elevation
(Adds 0 Sq. Ft. to Main Floor)



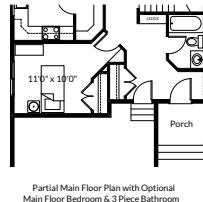
Partial Main Floor Plan
for Caldwell - W4 & W6 Elevation
(Adds 0 Sq. Ft. to Main Floor)



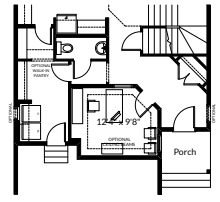
Partial Main Floor Plan
for Caldwell - K7, Q2, Q3 & Z1 Elevations
(Adds 0 Sq. Ft. to Main Floor)



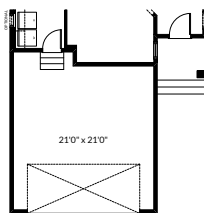
Partial Main Floor Plan
for Caldwell - T2 Elevation
(Adds 0 Sq. Ft. to Main Floor)



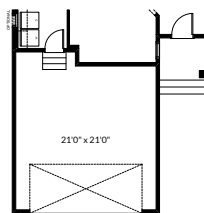
Partial Main Floor Plan with Optional
Main Floor Bedroom & 3 Piece Bathroom
(Adds 19 Sq. Ft. to Main Floor Only
Available with Expanded Spice Kitchen 2)



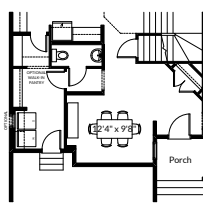
Optional Door and Window
for Flex Room
(Adds 0 Sq. Ft. to Main Floor)



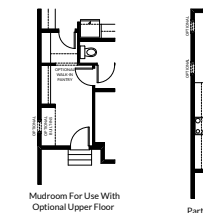
Partial Main Floor Plan
for Caldwell - W5 Elevation
(Adds 0 Sq. Ft. to Main Floor)



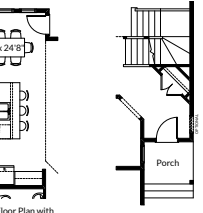
Partial Main Floor Plan
for Caldwell - W7 Elevation
(Adds 0 Sq. Ft. to Main Floor)



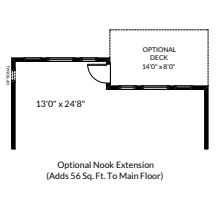
Optional Open Flex Room
(Adds 0 Sq. Ft. to Main Floor)



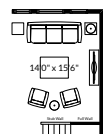
Mudroom for Use With
Optional Upper Floor
Laundry Room
(Adds 0 Sq. Ft. to Main Floor)



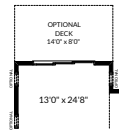
Partial Main Floor Plan with
Optional Kitchen Layout #3
(Must be Used with
Optional Nook Extension;
Adds 56 Sq. Ft. to Main Floor)



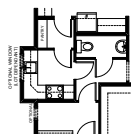
Optional Finished Stair
to Basement c/w Center
Wall Opening
(Adds 0 Sq. Ft. to Main Floor)



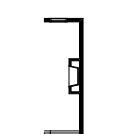
Partial Main Floor Plan for use
with Second Floor Options that
Fill in Open to Below Area
(Adds 0 Sq. Ft. to Main Floor)



Partial Main Floor Plan with
Optional 3 Section Patio Doors
in Optional Nook Extension
(Nook Extension Adds
56 Sq. Ft. to Main Floor)



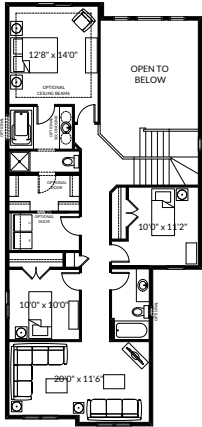
Partial Main Floor Plan with
Optional Expanded Spice Kitchen
(Adds 16 Sq. Ft. to Main Floor)



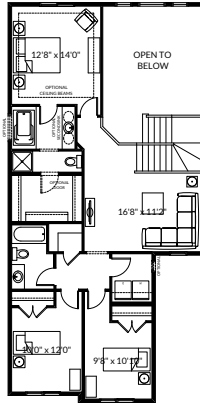
Partial Main Floor Plan with
Optional Interior Fireplace
(Adds 0 Sq. Ft. to Main Floor)

ADDITIONAL
OPTIONS

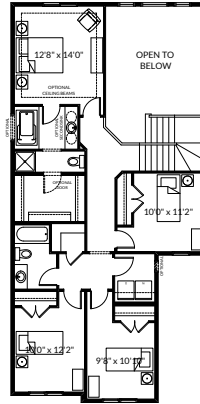
FLOOR PLAN OPTIONS



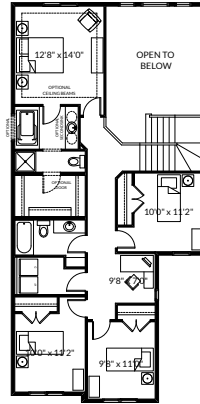
Second Floor Plan with Upper Floor Laundry Room for Caldwell - Base Elevation (Adds 59 Sq. Ft. to Second Floor)



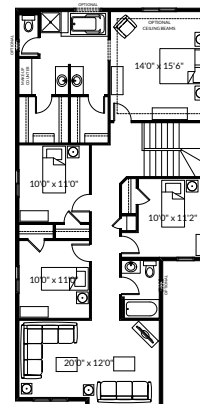
Optional Second Floor Plan with Loft and Upper Floor Laundry Room for Caldwell - Base Elevation (Adds 0 Sq. Ft. to Second Floor)
Note: Not Available with M1, R3, T2, W4, W5 & W6 Elevations



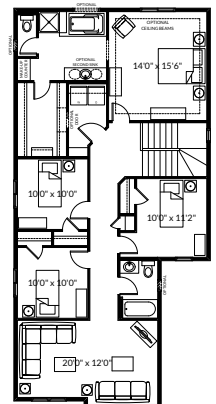
Optional Second Floor Plan with 4 Bedrooms and Upper Floor Laundry Room for Caldwell - Base Elevation (Adds 0 Sq. Ft. to Second Floor)
Note: Not Available with M1, R3, T2, W4, W5 & W6 Elevations



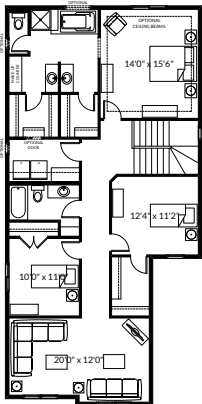
Optional Second Floor Plan with 4 Bedrooms, Tech Centre and Upper Floor Laundry Room for Caldwell - Base Elevation (Adds 0 Sq. Ft. to Second Floor)
Note: Not Available with M1, R3, T2, W4, W5 & W6 Elevations



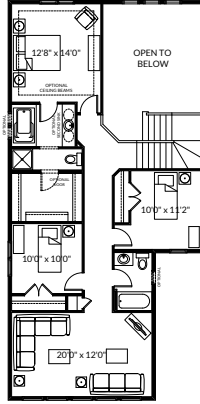
Second Floor Plan with 4 Bedrooms and Upgraded Ensuite for Caldwell - Base Elevation (Adds 234 Sq. Ft. to Second Floor)



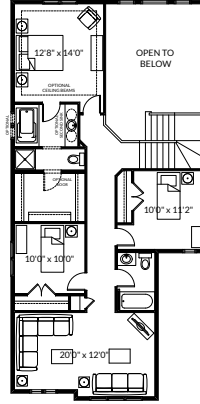
Second Floor Plan with 4 Bedrooms, Upgraded Ensuite and Second Floor Laundry Room for Caldwell - Base Elevation (Adds 234 Sq. Ft. to Second Floor)



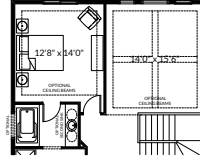
Second Floor Plan with 3 Bedrooms, Upgraded Ensuite and Second Floor Laundry Room for Caldwell - Base Elevation (Adds 234 Sq. Ft. to Second Floor)



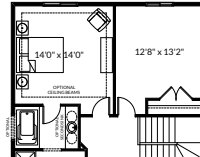
Second Floor Plan for Caldwell - W1 Elevation 1212 Sq. Ft. (Adds 10 Sq. Ft. to Second Floor)



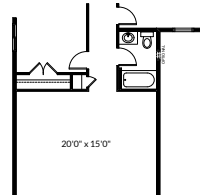
Second Floor Plan for Caldwell - X1 Elevation 1203 Sq. Ft. (Adds 1 Sq. Ft. to Second Floor)



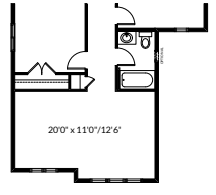
Optional Media Room (Adds 234 Sq. Ft. to Second Floor)



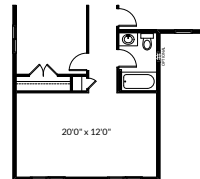
Optional Fourth Bedroom (Adds 234 Sq. Ft. to Second Floor)



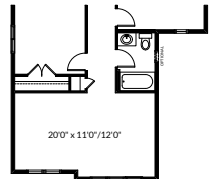
Partial Second Floor Plan for Caldwell - K7 & Z1 Elevations (Adds 73 Sq. Ft. to Second Floor)



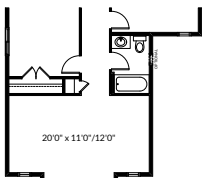
Partial Second Floor Plan for Caldwell - K7 & Z1 Elevations (Adds 7 Sq. Ft. to Second Floor)



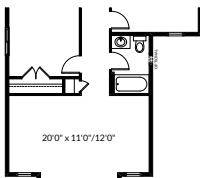
Partial Second Floor Plan for Caldwell - N2 Elevation (Adds 10 Sq. Ft. to Second Floor)



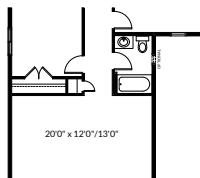
Partial Second Floor Plan for Caldwell - Q2 & Q3 Elevations (Adds 1 Sq. Ft. to Second Floor)



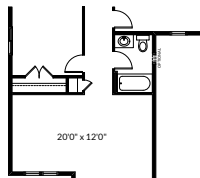
Partial Second Floor Plan for Caldwell - T2 Elevation (Adds 0 Sq. Ft. to Second Floor)



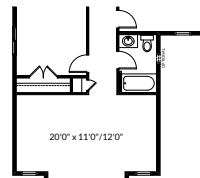
Partial Second Floor Plan for Caldwell - W4 Elevation (Adds 1 Sq. Ft. to Second Floor)



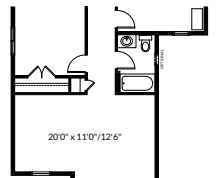
Partial Second Floor Plan for Caldwell - W5 Elevation (Adds 17 Sq. Ft. to Second Floor)



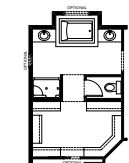
Partial Second Floor Plan for Caldwell - W6 Elevation (Adds 1 Sq. Ft. to Second Floor)



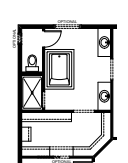
Partial Second Floor Plan for Caldwell - W7 Elevation (Adds 1 Sq. Ft. to Second Floor)



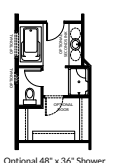
Partial Second Floor Plan for Caldwell - Q2 & Q3 Elevations (Adds 7 Sq. Ft. to Second Floor)



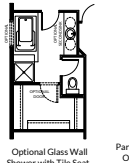
Optional Upgraded Ensuite #1 for use with Second Floor Plan with 3 Bedrooms, Upgraded Ensuite and Second Floor Laundry Room (Adds 248 Sq. Ft. to Second Floor)



Optional Upgraded Ensuite #2 for use with Second Floor Plan with 3 Bedrooms, Upgraded Ensuite and Second Floor Laundry Room (Adds 234 Sq. Ft. to Second Floor)



Optional 48" x 36" Shower (Adds 0 Sq. Ft. to Second Floor)



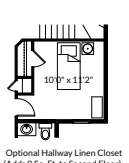
Optional Glass Wall Shower with Tile Seat (Adds 0 Sq. Ft. to Second Floor)



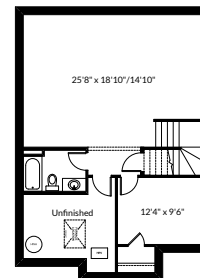
Partial Second Floor Plan with Optional Interior Fireplace (Adds 0 Sq. Ft. to Second Floor)



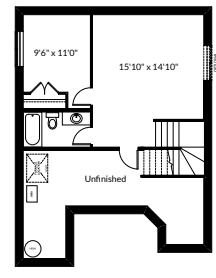
Optional Bonus Room Bar (Only Available with Second Floor Plan with 3 Bedrooms, Upgraded Ensuite and Second Floor Laundry Room)



Optional Hallway Linen Closet (Adds 0 Sq. Ft. to Second Floor)



Optional Basement Room Layout 747 Sq. Ft. (Finished Area)



Optional Basement Room Layout for Optional Extended Garage 497 Sq. Ft. (Finished Area)

Prices are subject to change without notice. Actual floor plan, elevation, and square footage may not be exactly as shown. Square footage is measured to Alberta Building Code (ABC) regulations. Builder reserves the right to make changes without notice. E&OE.

Homes by **AVI**

26'

THE LINCOLN

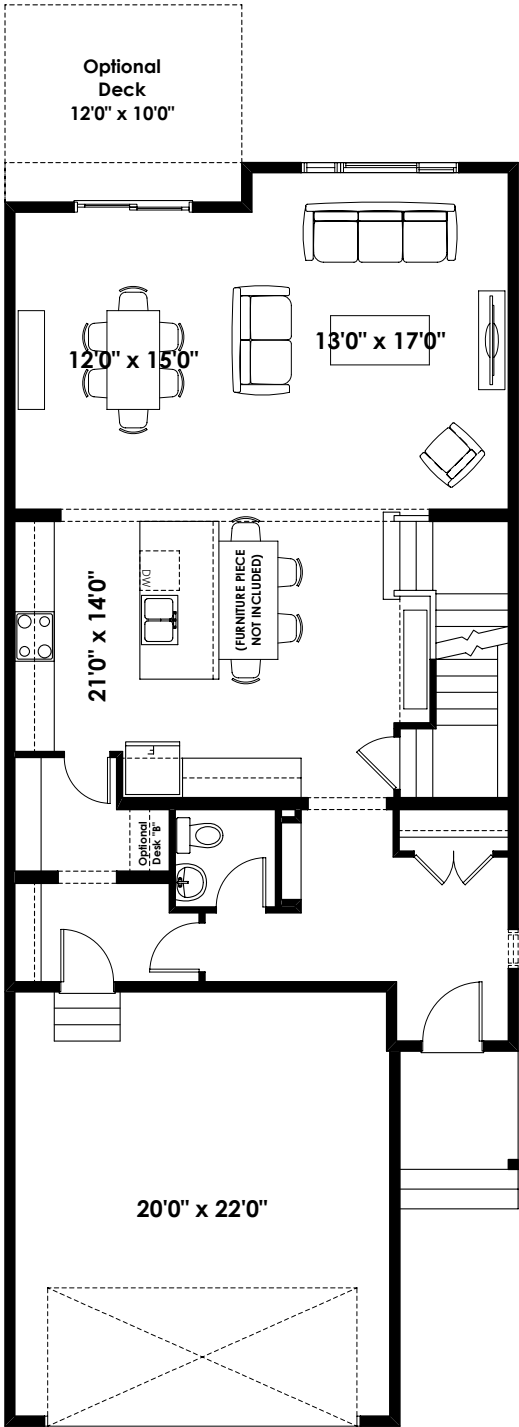
2,533+ SQ FT | 3 BED | 2.5 BATH



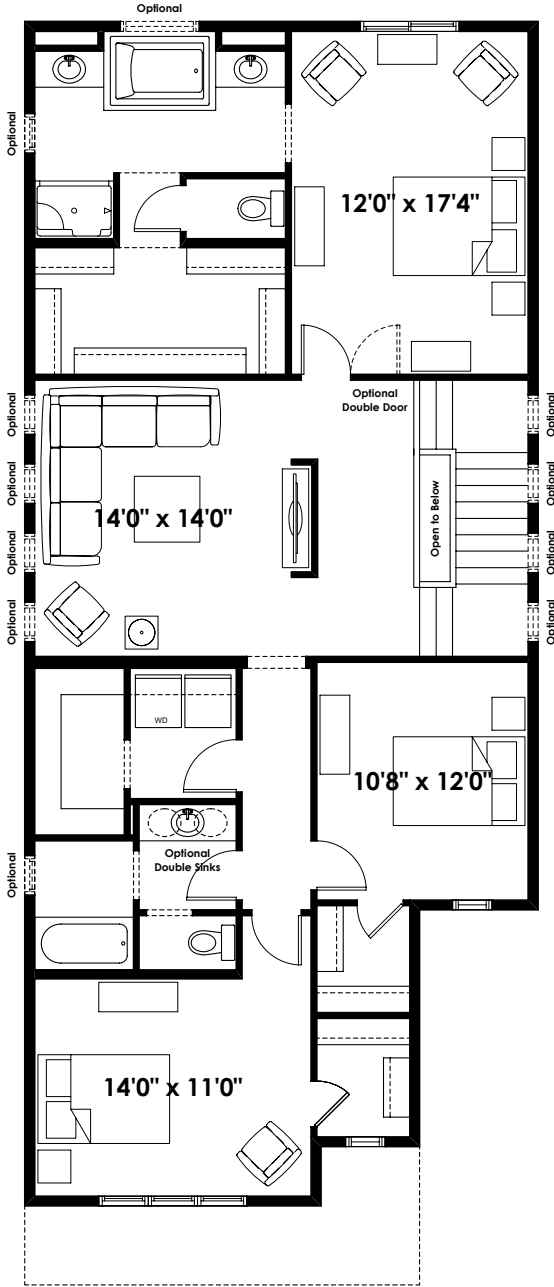
BETTER VALUE BY DESIGN
SINCE 1978 | HOMESBYAVI.COM

Homes by **AVI**

BASE FLOOR PLAN

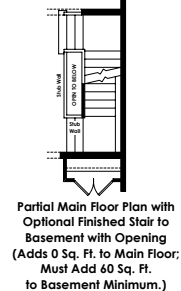
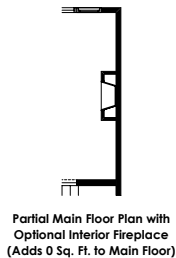
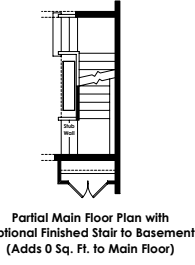
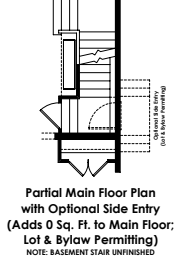
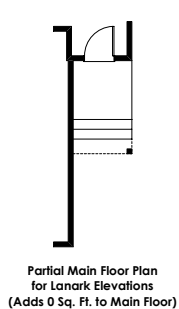
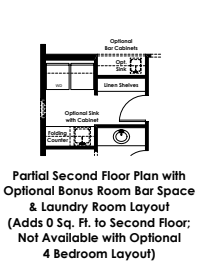
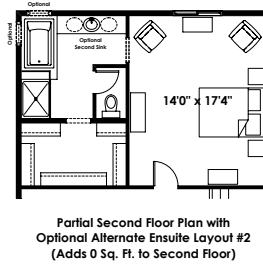
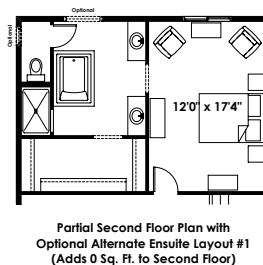
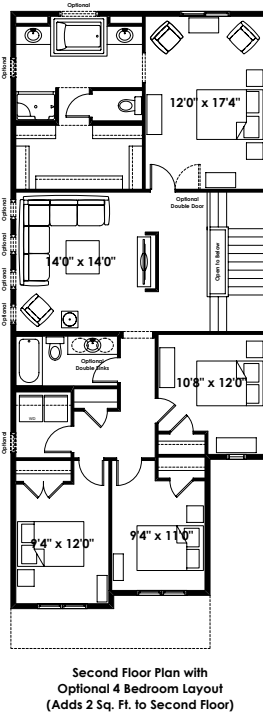
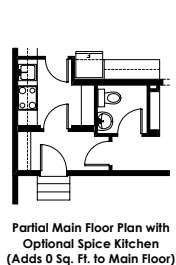
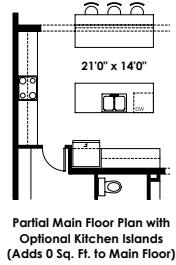
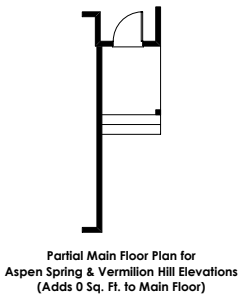
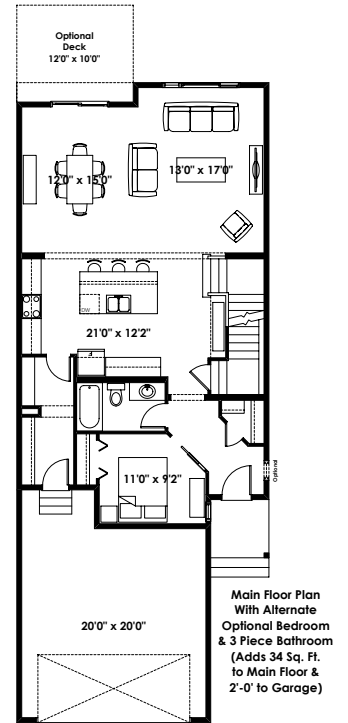
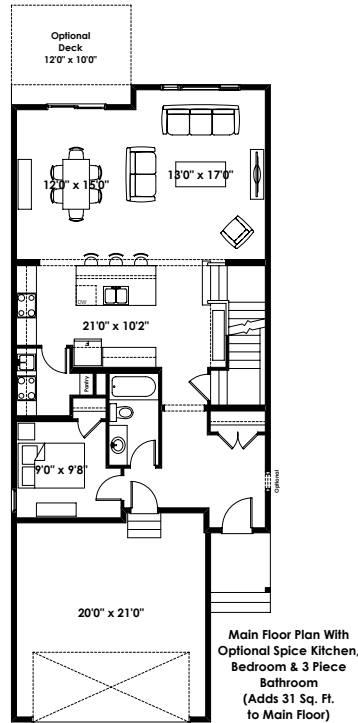
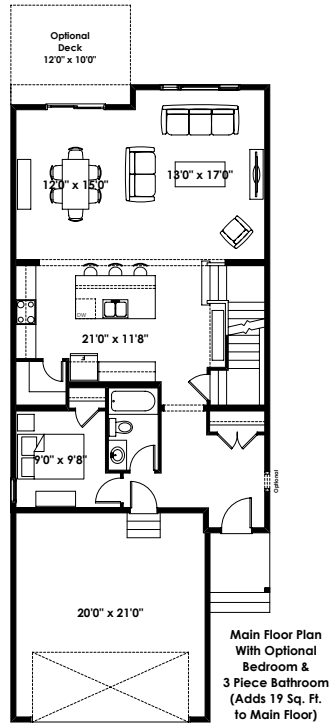
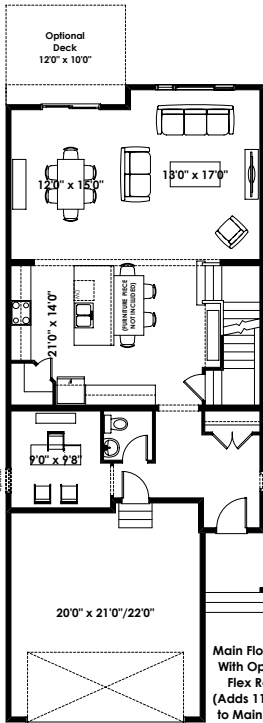


MAIN
1,088 SQ FT



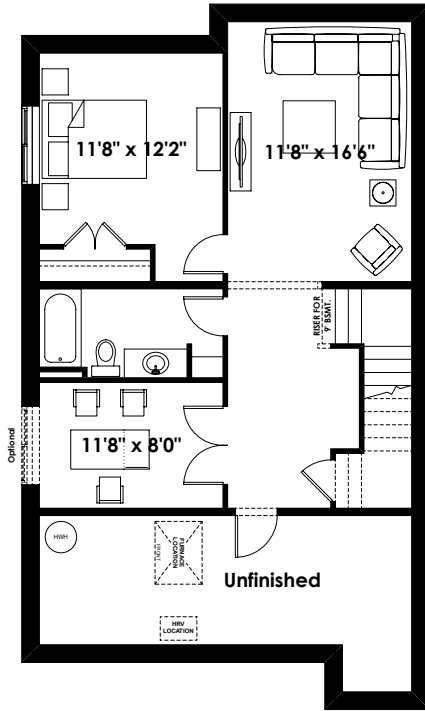
UPPER
1,445 SQ FT

FLOOR PLAN OPTIONS

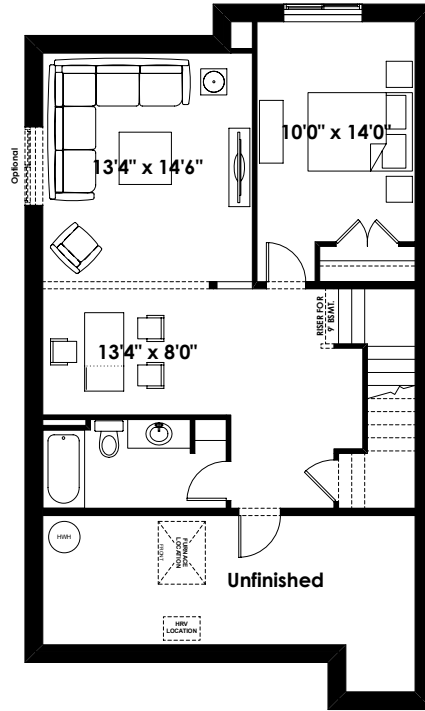


ADDITIONAL
OPTIONS

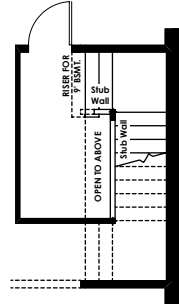
FLOOR PLAN OPTIONS



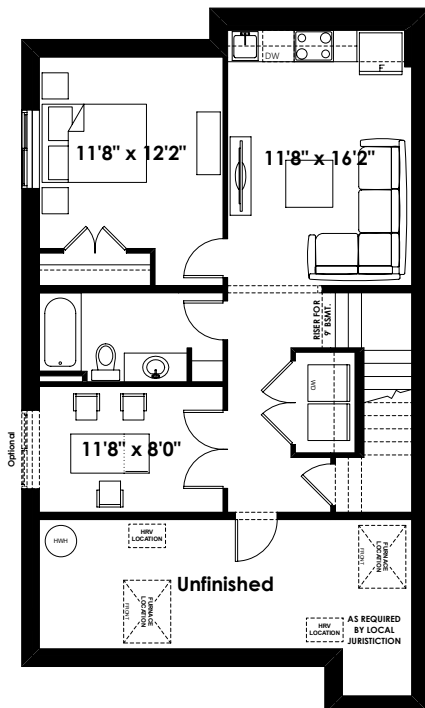
Optional Basement Room Layout
700 Sq. Ft. (Finished Area)



Alternate Optional Basement Room Layout
700 Sq. Ft. (Finished Area)

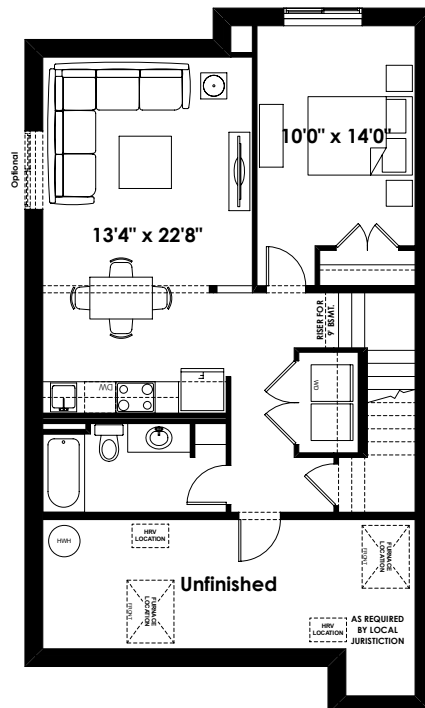


**Basement Landing for Optional
Finished Stair to Basement with
Opening (Must Add 60 Sq. Ft. of Finished
Basement Area Minimum)**



Optional Basement Suite Layout
700 Sq. Ft. (Finished Area;
Must Add Optional Side Entry)

BASEMENT SUITE MAY NOT CONFORM
TO ALL MUNICIPALITIES;
LAND USE BY-LAW & CODE MUST BE
REVIEWED PRIOR TO ACCEPTANCE



Alternate Optional Basement Suite Layout
700 Sq. Ft. (Finished Area;
Must Add Optional Side Entry)

BASEMENT SUITE MAY NOT CONFORM
TO ALL MUNICIPALITIES;
LAND USE BY-LAW & CODE MUST BE
REVIEWED PRIOR TO ACCEPTANCE

26'

THE TITUS

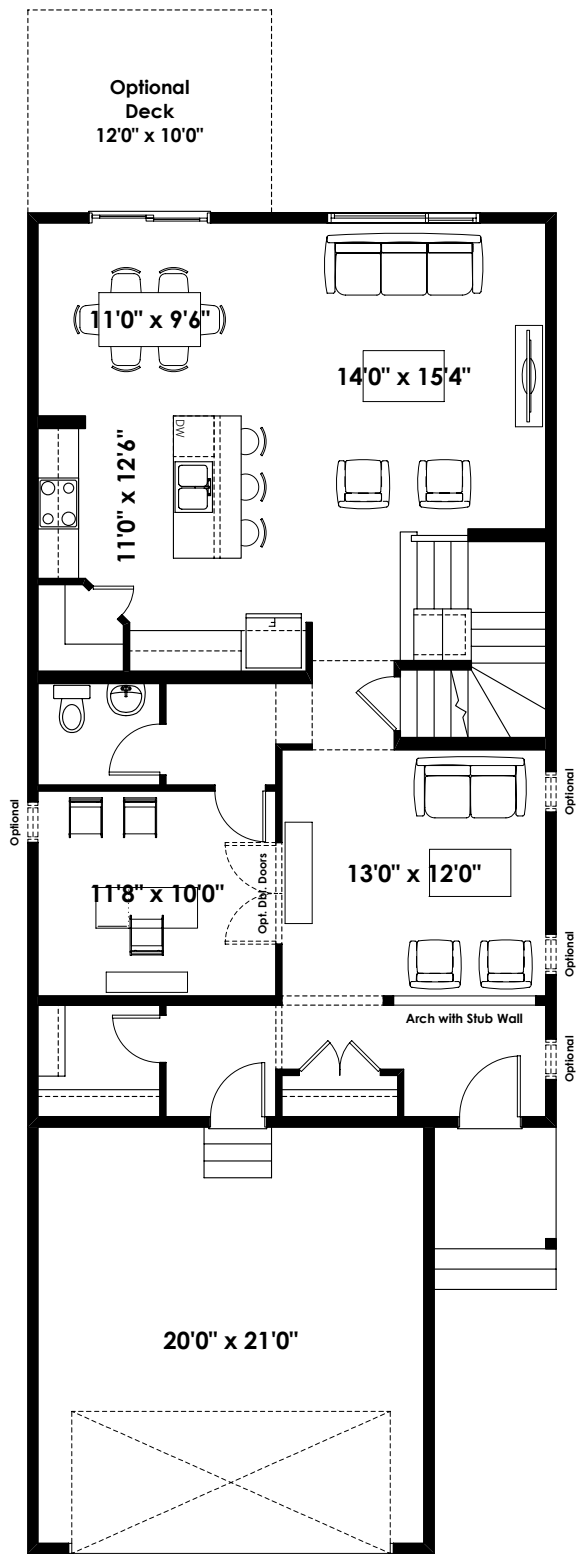
2,547+ SQ FT | 3 BED | 2.5 BATH



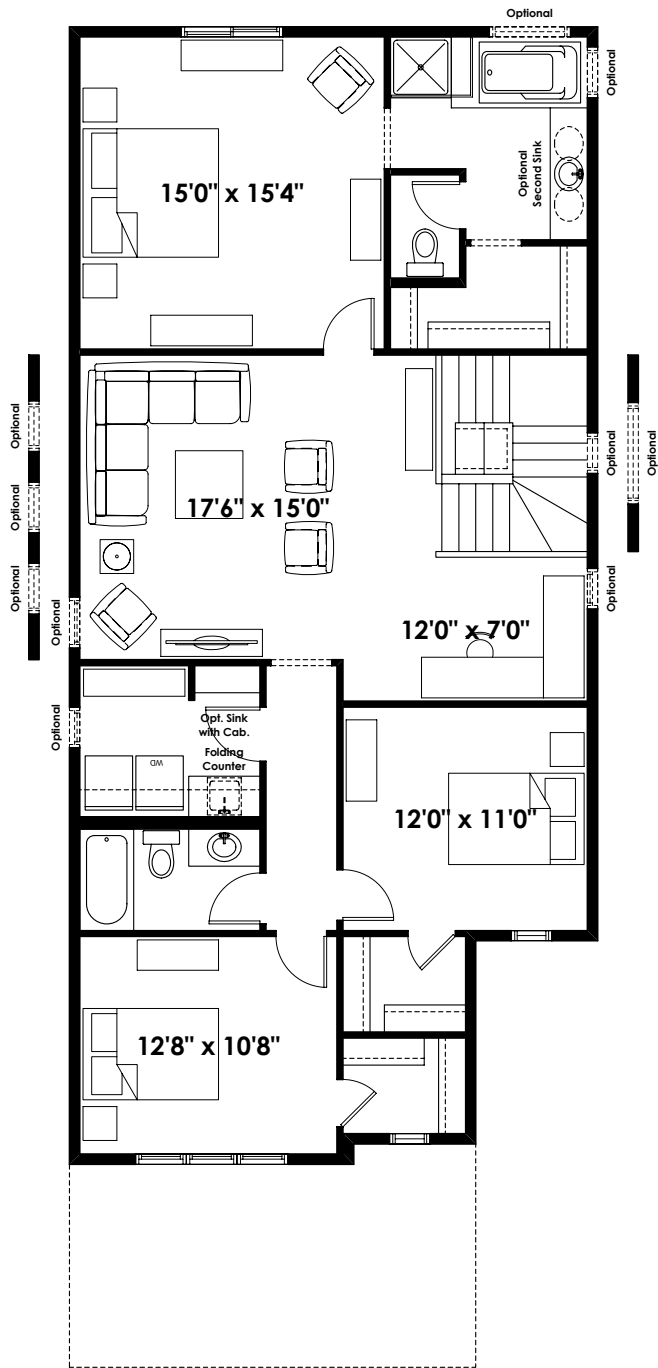
BETTER VALUE BY DESIGN
SINCE 1978 | HOMESBYAVI.COM

Homes by **AVI**

BASE FLOOR PLAN

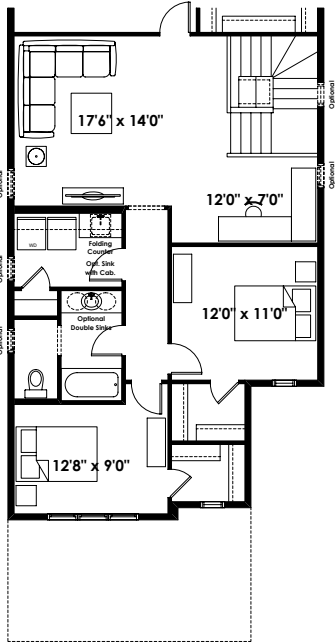


MAIN
1,170 SQ FT

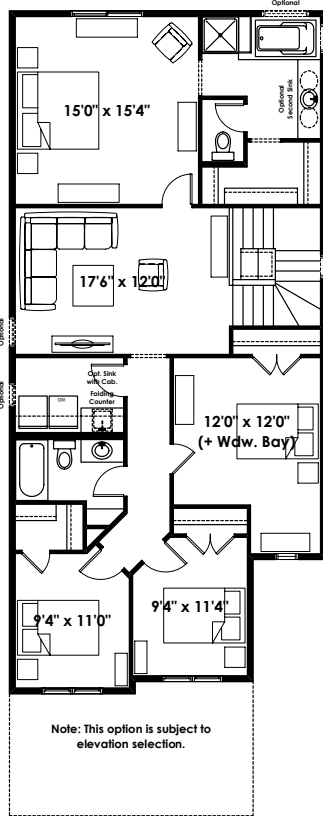


UPPER
1,377 SQ FT

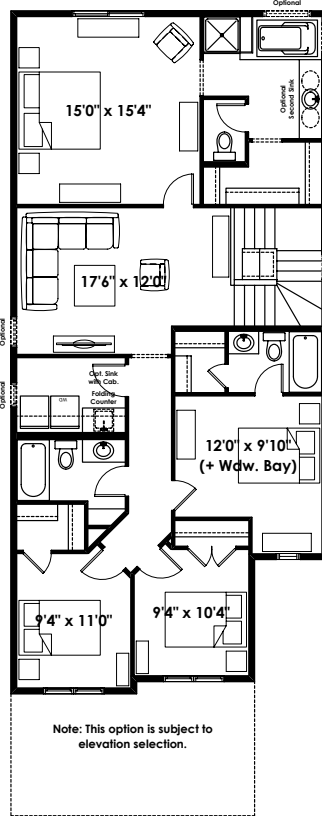
FLOOR PLAN OPTIONS



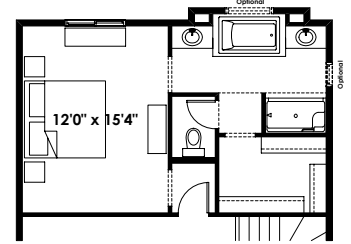
Partial Second Floor Plan with
Optional Alternate Main Bath #1
(Adds 0 Sq. Ft. to Second Floor;
Not available with Optional 4 Bedroom Layout)



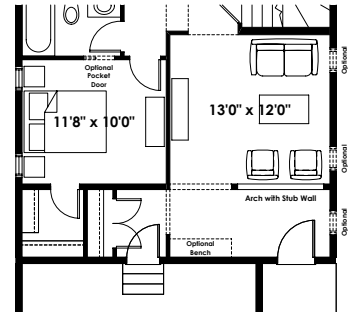
Second Floor Plan with
Optional 4 Bedroom Layout
(Removes 4 Sq. Ft. from Second Floor)



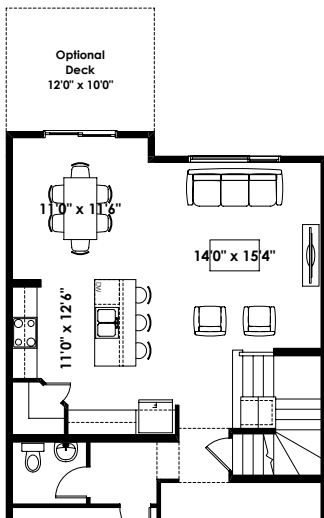
Second Floor Plan with
Optional 4 Bedroom Layout
With Second Ensuite
(Removes 4 Sq. Ft. from Second Floor)



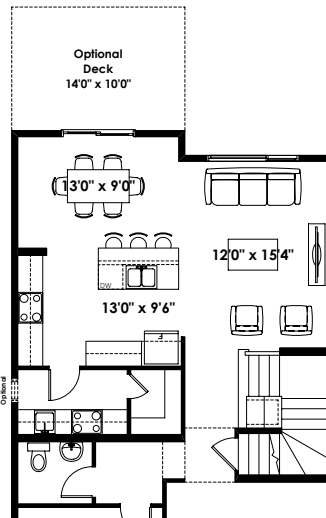
Partial Second Floor Plan with
Optional Alternate Ensuite #1
(Adds 10 Sq. Ft. to Second Floor)



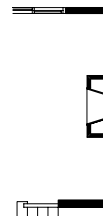
Partial Main Floor Plan with
Optional Closet Location for
Use with Optional Bedroom & Bathroom
(Adds 0 Sq. Ft. to Main Floor)



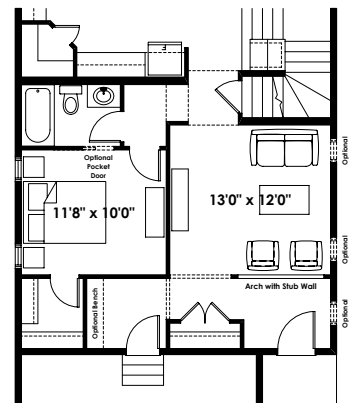
Partial Main Floor Plan
with Optional Eating Area Extension
(Adds 24 Sq. Ft. to Main Floor)



Partial Main Floor Plan
with Optional Spice Kitchen
(Adds 28 Sq. Ft. to Main Floor)



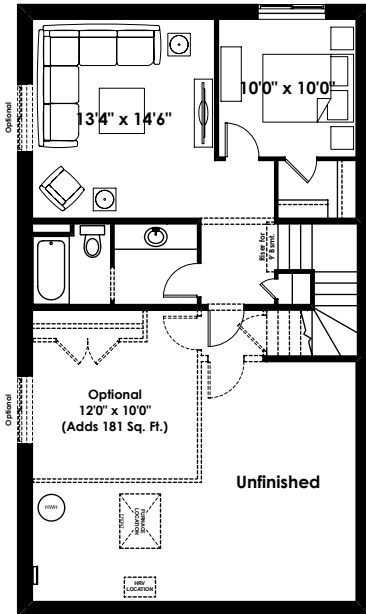
Partial Main Floor Plan with
Optional Interior Fireplace
(Adds 0 Sq. Ft. to Main Floor)



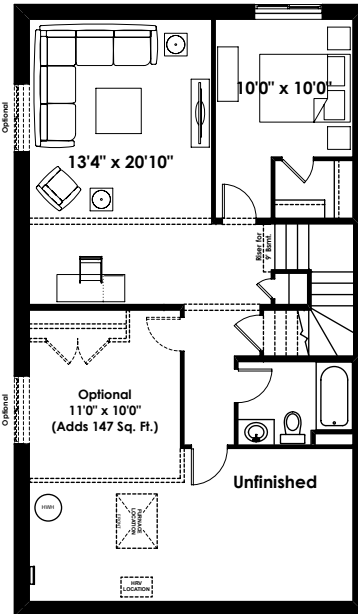
Partial Main Floor Plan with
Optional Bedroom & Bathroom
(Adds 0 Sq. Ft. to Main Floor)

ADDITIONAL
OPTIONS

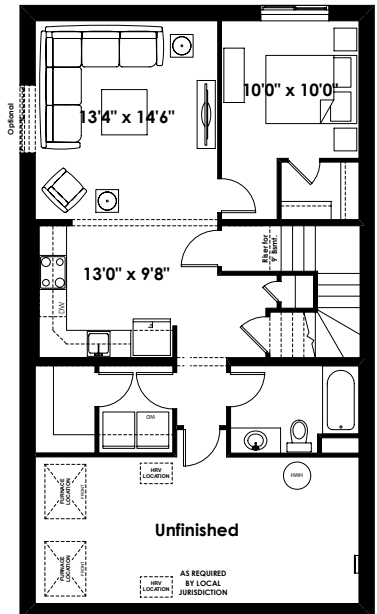
FLOOR PLAN OPTIONS



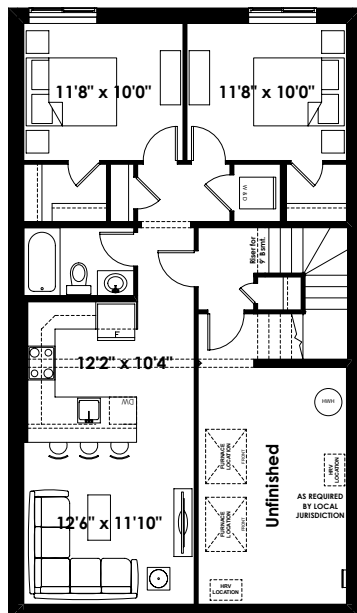
Optional Basement Room Layout
508 Sq. Ft. (Finished Area)



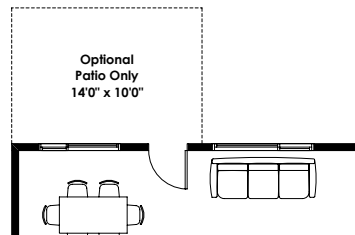
Optional Alternate Basement Room Layout
621 Sq. Ft. (Finished Area)



Optional 1 Bedroom Basement Suite Layout
739 Sq. Ft. (Finished Area;
Must add Optional Side Entry)



Optional 2 Bedroom Basement Suite Layout
795 Sq. Ft. (Finished Area;
Must add Optional Side Entry)



Partial Main Floor Plan
for Optional Two Bedroom
Basement Suite Layout
(Adds 0 Sq. Ft. to Main Floor)

30'

THE MARICOPA

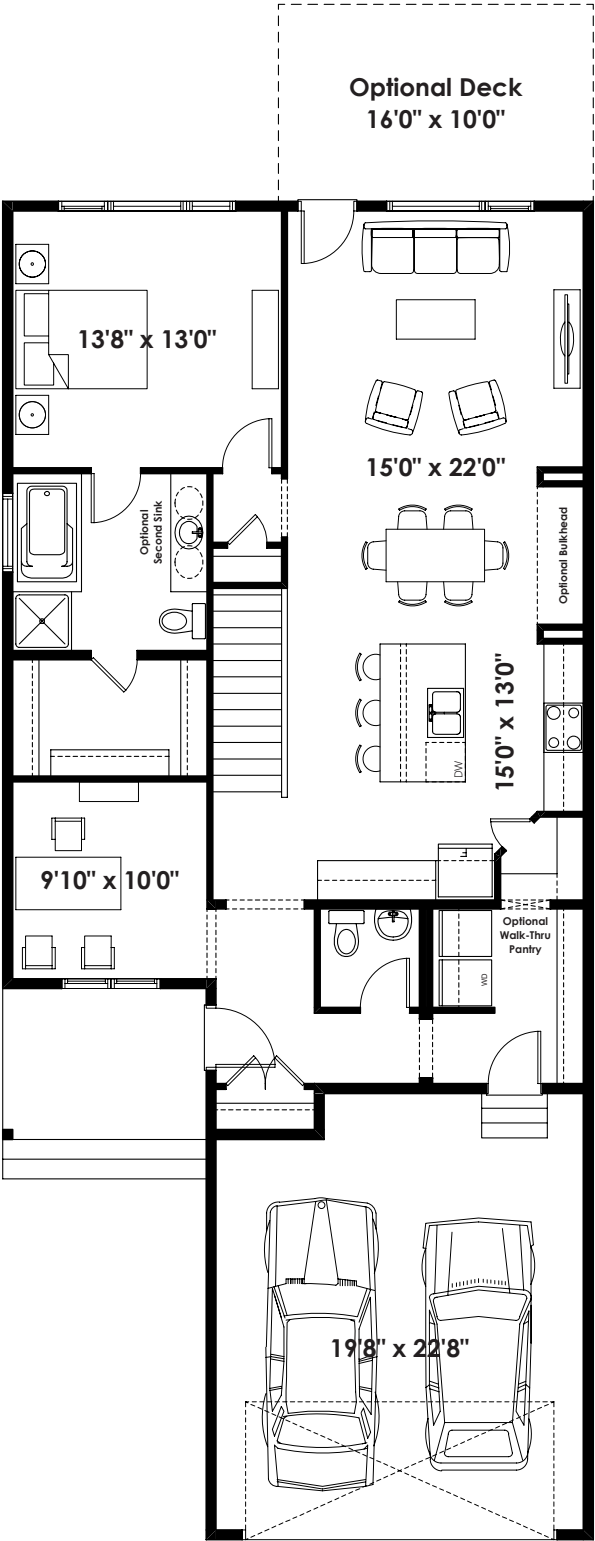
1,319+ SQ FT | 1 BED | 1.5 BATH



BETTER VALUE BY DESIGN
SINCE 1978 | HOMESBYAVI.COM

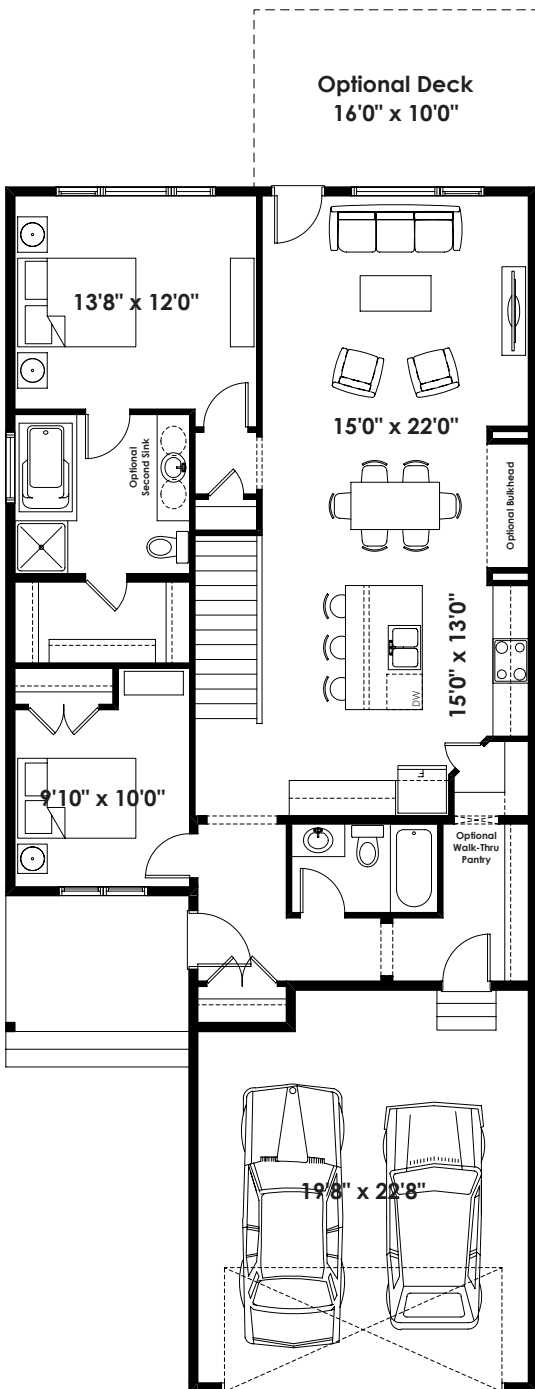
Homes by **AVI**

BASE FLOOR PLAN

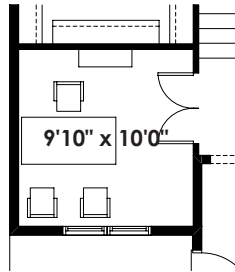


MAIN
1,319 SQ FT

FLOOR PLAN OPTIONS



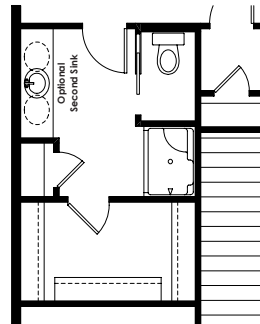
**Maricopa Main Floor Plan with
Optional Second Bedroom
& 3 Piece Bathroom
(Laundry Moves to Basement;
Adds 0 Sq. Ft.)**



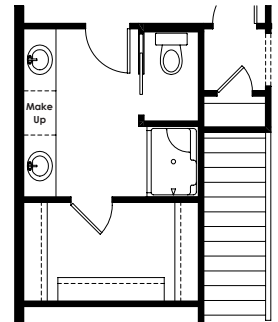
**Partial Maricopa Main Floor Plan with
Optional Double Doors to Flex Room
(Adds 0 Sq. Ft.)**



**Partial Main Floor Plan with
Optional Interior Fireplace
(Adds 0 Sq. Ft. to Main Floor)**



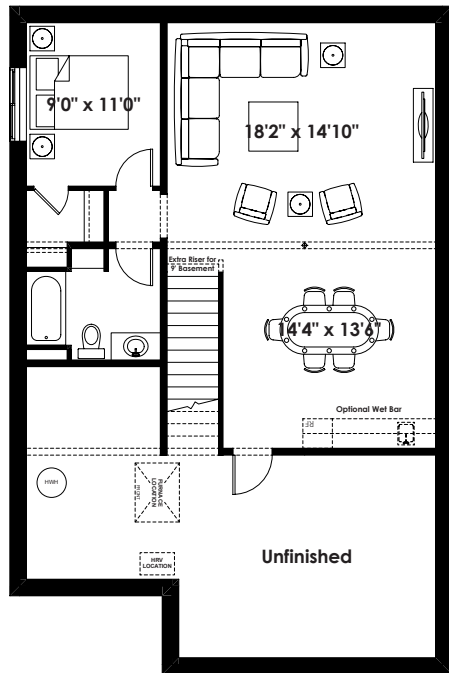
**Partial Maricopa Main Floor Plan
with Optional 3 Piece Ensuite
(Adds 0 Sq. Ft.)**



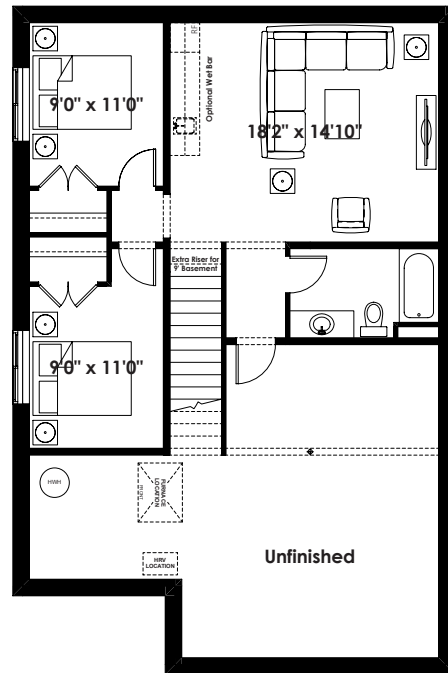
**Partial Maricopa Main Floor Plan
with Optional 3 Piece Ensuite
with Make Up Desk
(Adds 0 Sq. Ft.)**

**ADDITIONAL
OPTIONS**

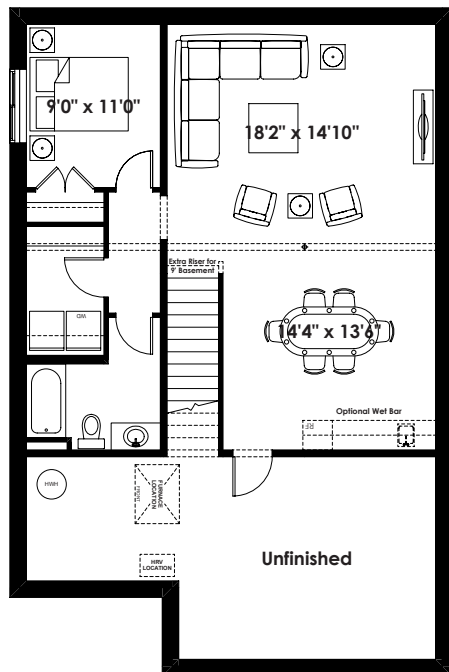
FLOOR PLAN OPTIONS



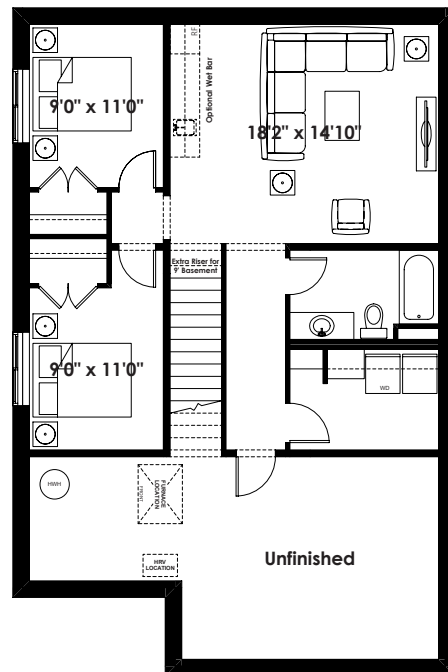
Optional Basement Room Layout
752 Sq. Ft. (Finished Area;
Not Included in Contract)



Alternate Two Bedroom
Optional Basement Room Layout
698 Sq. Ft. (Finished Area;
Not Included in Contract)



Optional Basement Room Layout for
use with Optional Second Bedroom
& 3 Piece Bathroom
812 Sq. Ft. (Finished Area;
Not Included in Contract)



Alternate Two Bedroom
Optional Basement Room Layout for
use with Optional Second Bedroom
& 3 Piece Bathroom
812 Sq. Ft. (Finished Area;
Not Included in Contract)

Prices are subject to change without notice. Actual floor plan, elevation, and square footage may not be exactly as shown. Square footage is measured to Alberta Building Code (ABC) regulations. Builder reserves the right to make changes without notice. E&OE.

Homes by **AVI**

30'

THE SEDONA

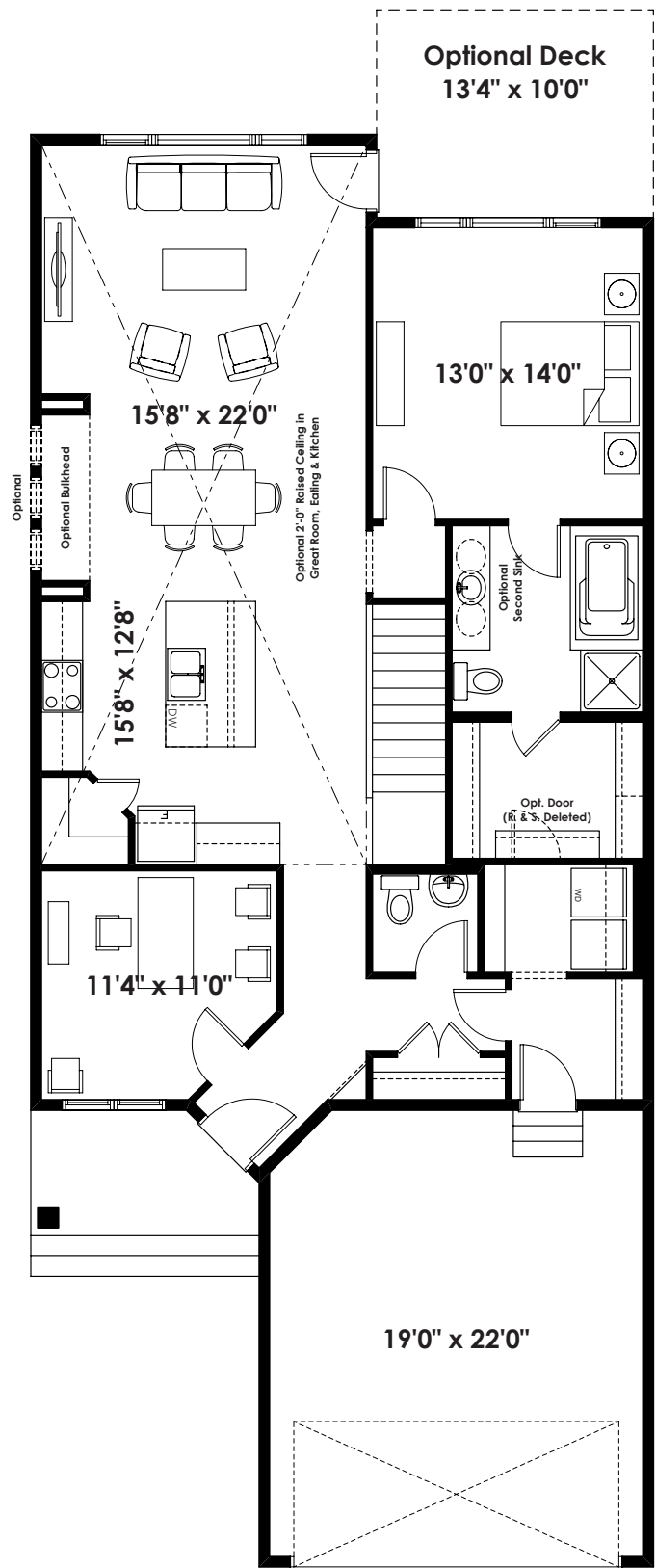
1,369+ SQ FT | 1 BED | 1.5 BATH



BETTER VALUE BY DESIGN
SINCE 1978 | HOMESBYAVI.COM

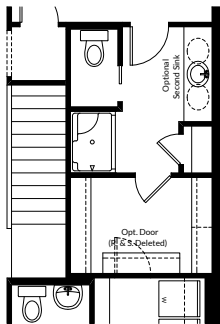
Homes by **AVI**

BASE FLOOR PLAN

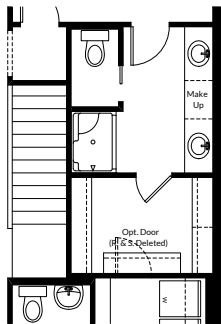


MAIN
1,319 SQ FT

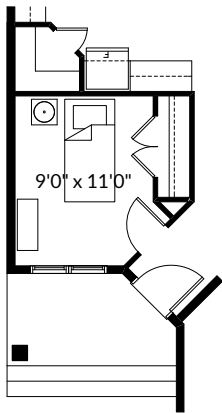
FLOOR PLAN OPTIONS



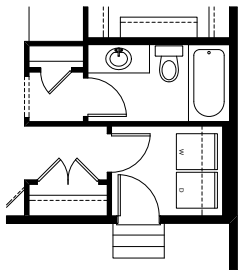
Partial Sedona Main Floor Plan with Optional 3 Piece Ensuite (Adds 0 Sq. Ft.)



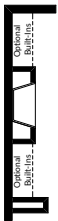
Partial Sedona Main Floor Plan with Optional 3 Piece Ensuite with Make Up Desk (Adds 0 Sq. Ft.)



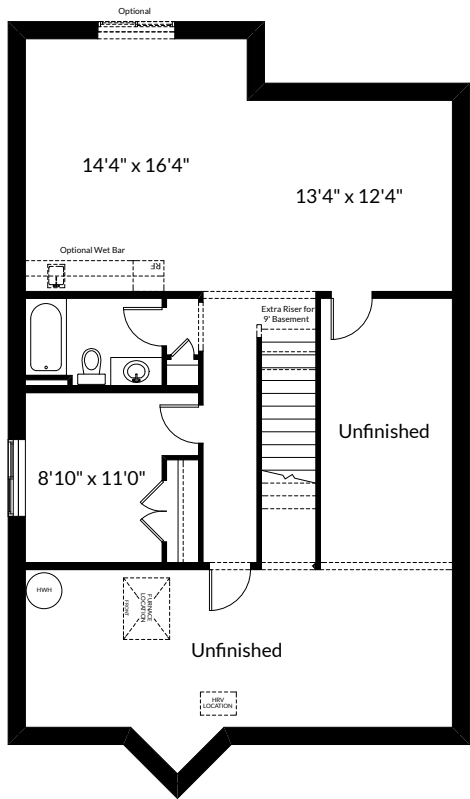
Partial Sedona Main Floor Plan with Optional Second Bedroom (Adds 0 Sq. Ft.)



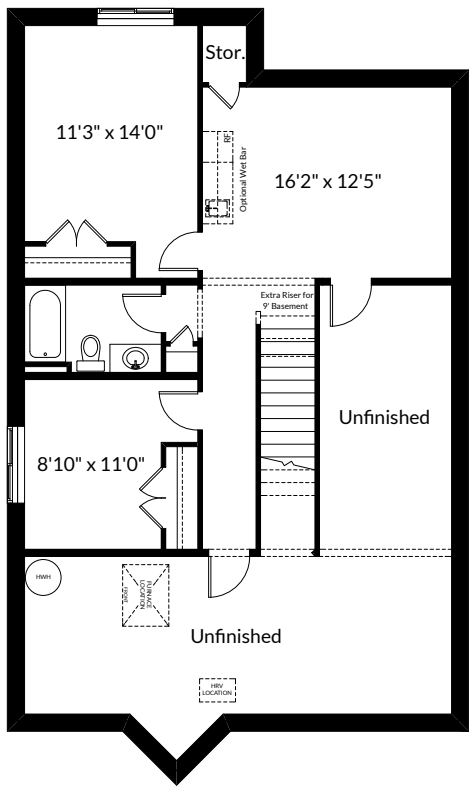
Partial Sedona Main Floor Plan with Optional 3 Piece Bathroom, & Modified Mudroom (Adds 0 Sq. Ft.)



Partial Main Floor Plan with Optional Interior Fireplace (Adds 0 Sq. Ft. to Main Floor)



Future Basement Room Layout 733 Sq. Ft. (Finished Area; Not Included in Contract)



Alternate Two Bedroom Future Basement Room Layout 733 Sq. Ft. (Finished Area; Not Included in Contract)

ADDITIONAL
OPTIONS

32'

THE MESA

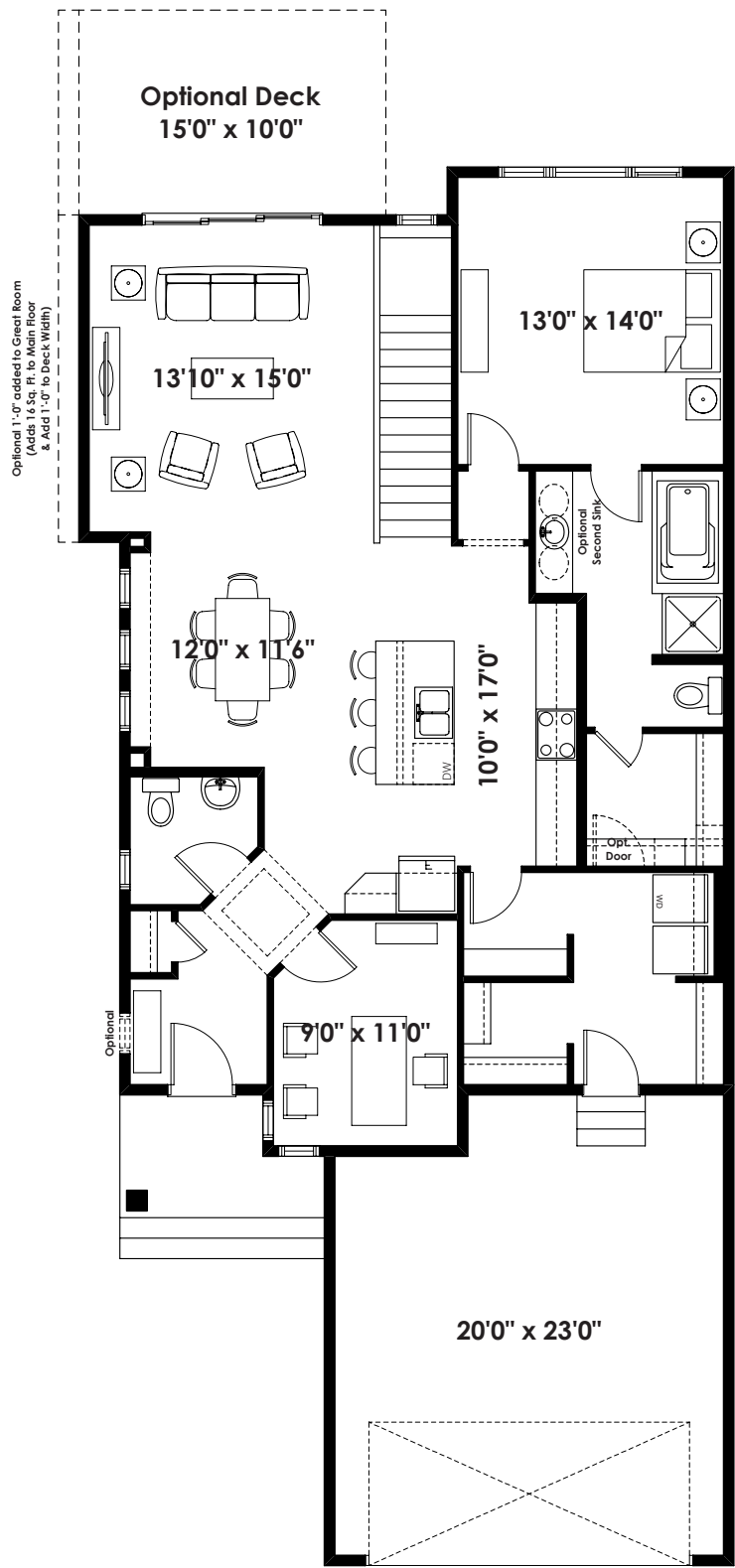
1,385+ SQ FT | 1 BED | 1.5 BATH



BETTER VALUE BY DESIGN
SINCE 1978 | HOMESBYAVI.COM

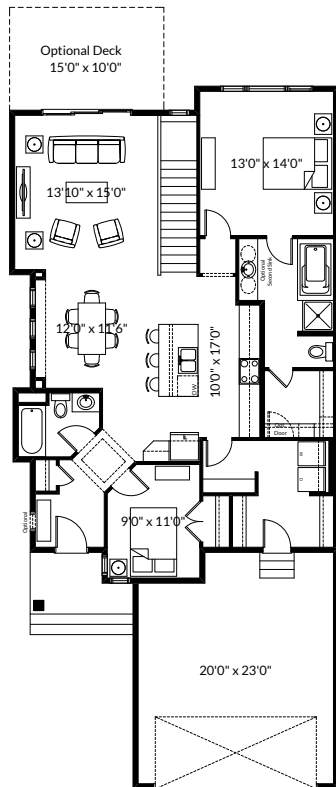
Homes by **AVI**

BASE FLOOR PLAN

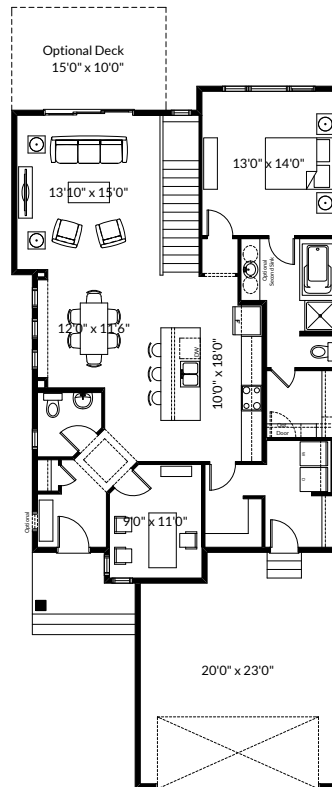


MAIN
1,385 SQ FT

FLOOR PLAN OPTIONS



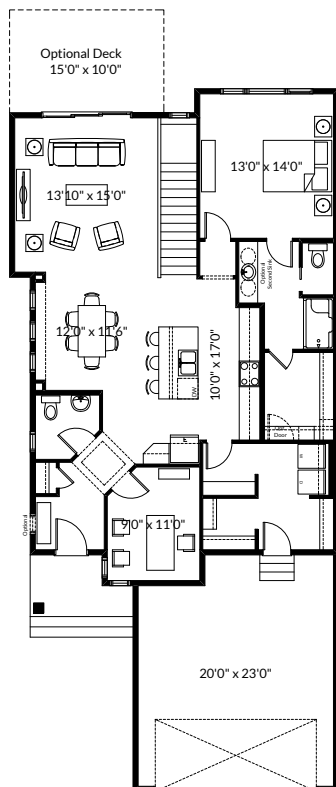
Mesa Main Floor Plan with Optional 3 Piece Bathroom & Second Bedroom (Adds 12 Sq. Ft.)



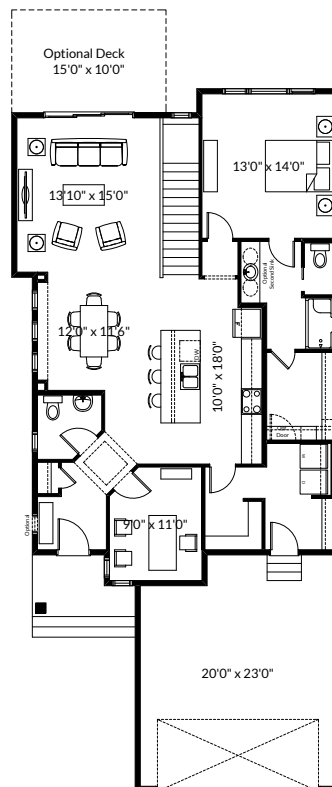
Mesa Main Floor Plan with Alternate Kitchen Layout (Not Available with 3 Piece Bathroom & Second Bedroom) (Adds 0 Sq. Ft.)



Partial Main Floor Plan with Optional Interior Fireplace (Adds 0 Sq. Ft. to Main Floor)



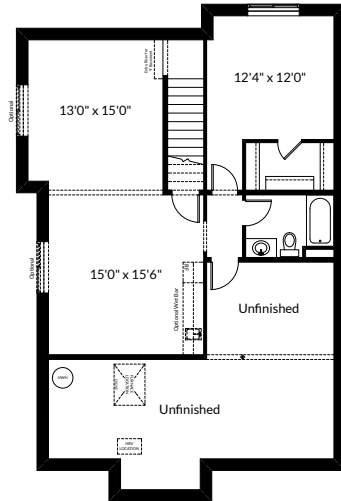
Mesa Main Floor Plan with 3 Piece Ensuite (Adds 0 Sq. Ft.)



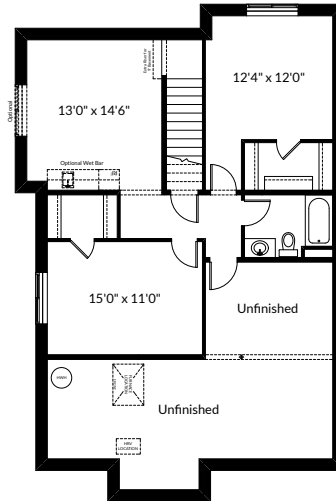
Mesa Main Floor Plan with Alternate Kitchen Layout & 3 Piece Ensuite (Not Available with 3 Piece Bathroom & Second Bedroom) (Adds 0 Sq. Ft.)

ADDITIONAL
OPTIONS

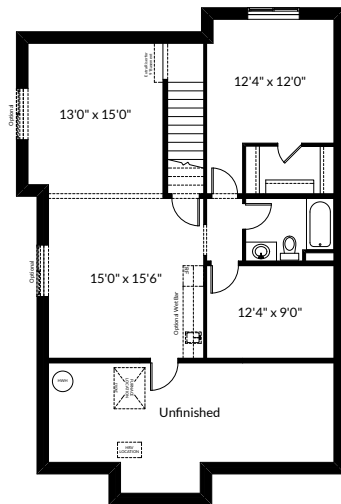
FLOOR PLAN OPTIONS



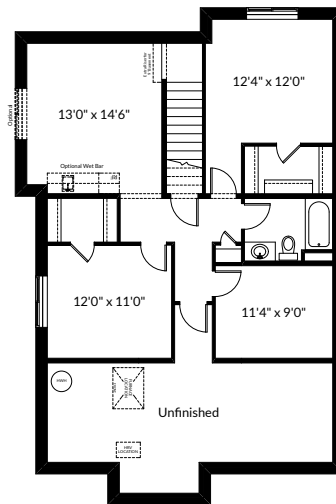
Future Basement Room Layout
789 Sq. Ft. (Finished Area)
(NOT INCLUDED IN CONTRACT)



Alternate Future Basement Room Layout
With Two Bedrooms
789 Sq. Ft. (Finished Area)
(NOT INCLUDED IN CONTRACT)



Future Basement Room Layout
with Optional Flex Room
910 Sq. Ft. (Finished Area)
(NOT INCLUDED IN CONTRACT)



Alternate Future Basement Room Layout
With Two Bedrooms & Optional Flex Room
890 Sq. Ft. (Finished Area)
(NOT INCLUDED IN CONTRACT)