

# PORTHAVEN

PO  
CO



# WELCOME TO NEW



**POCO CIRCA 1912**



**A NEW VISION**

Downtown Port Coquitlam is discovering a new energy that respects its past, but charts a bright new future.

Developed by Northstar, a company with deep roots in the community, Porthaven sits squarely at the centre of the vision that's building new momentum for Downtown PoCo. Be part of the new community that's emerging.



# VIBRANT ENERGY



A modern but approachable building with timeless brick detail. Designed by RH Architects at an accessible six storey scale, and with ground level retail for a high street feel, Porthaven sets a new standard for development in Downtown PoCo.



# THE RISE OF POCO

## THE POPULATION IS GROWING

The new Downtown PoCo isn't just about residential development. There's growth all around.

A \$31 million expansion of Translink's local bus depot is underway. BC's second largest community centre, at 205,000-square-feet, is already built.

People are moving to PoCo, one of the fastest growing cities in Greater Vancouver. New breweries, bakeries and bistros are moving in. The explosive growth in building permits being issued is only where the story of growth begins.





# PORTHAVEN

PO  
CO

GATES PARK / COQUITLAM RIVER /  
TRABOULAY POCO TRAIL

COQUITLAM CENTRAL  
SKYTRAIN STATION

COQUITLAM  
TOWN CENTRE

T&T SUPER  
MARKET

LEIGH  
SQUARE

PORT COQUITLAM  
CITY HALL

PORT COQUITLAM  
COMMUNITY CENTRE  
5 Min Walk

PORT COQUITLAM WEST  
COAST EXPRESS  
10 Min Walk

## URBAN CONVENIENCE

Be at the centre of it all. Just steps to shops and groceries. A short walk to craft breweries and restaurants. A ten minute walk, 3 minute drive to the West Coast Express, and even less to the brand new community centre. You won't find a location much more central than Leigh Square.



# FRONT & CENTRE

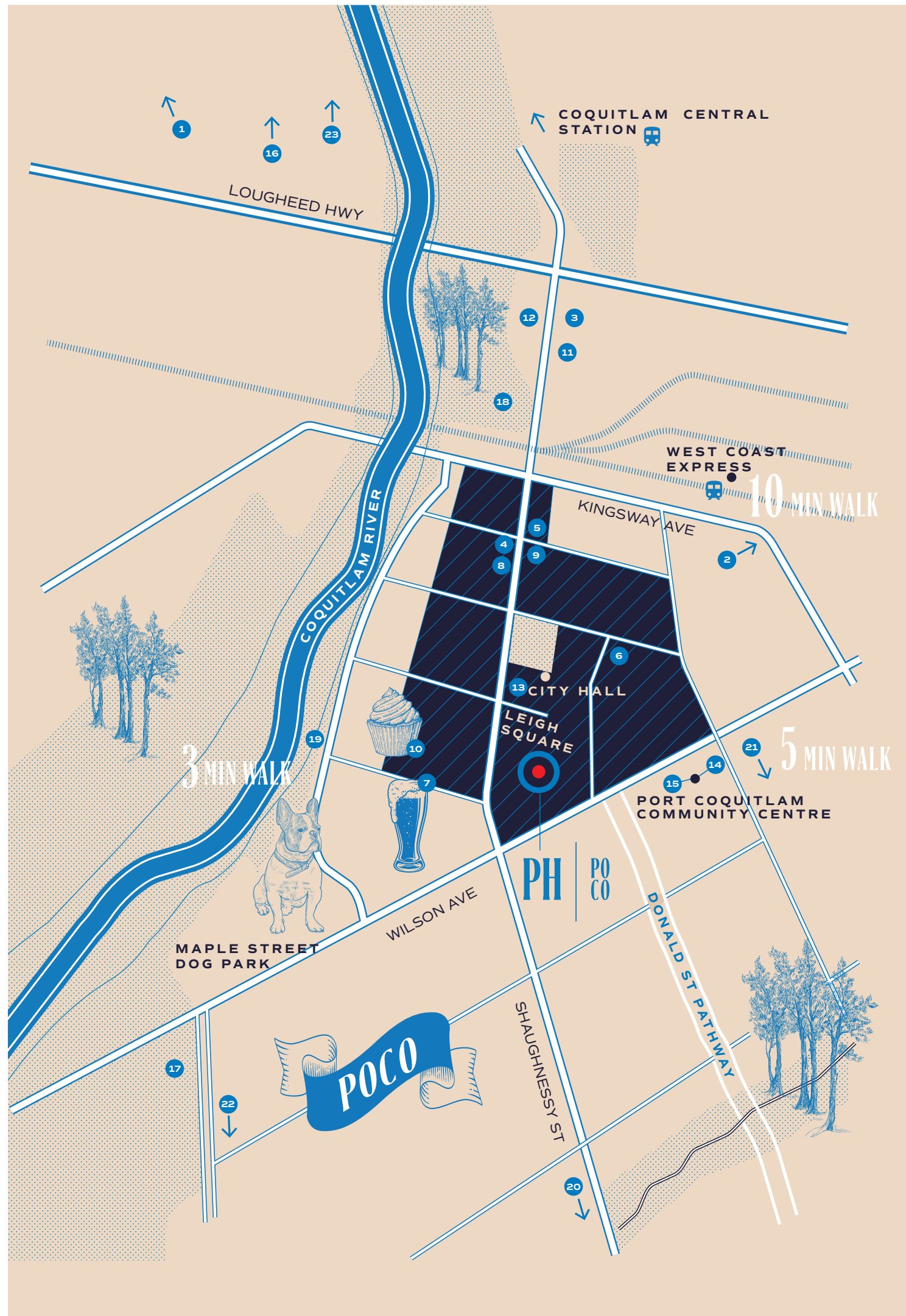
Every community has a heart, and it'd be fair to say Downtown PoCo's is at Leigh Square. Yes, you're central to everything the area has to offer, but you're also at the centre of a new vision for Leigh Square and Downtown as a pedestrian and family friendly place – a social hub for community gatherings and events.

Be front and centre for some of Downtown Coquitlam's signature events like May Days and the annual Terry Fox Run. Join in the fun at new events and activities in the revitalized Leigh Square.

Porthaven's ground level experience will feature seating and patio space for residents and locals to take in the entertainment from the front row.







## SHOPPING

- 1 Coquitlam Centre
- 2 Costco
- 3 Safeway
- 4 City Avenue Market

## DINING

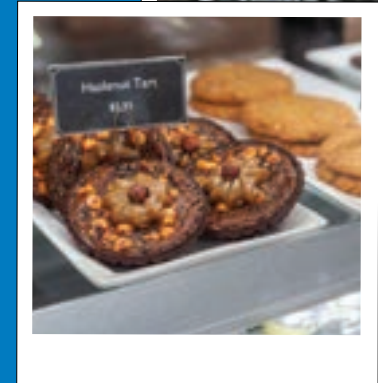
- 5 Jimmy's Lunch Box
- 6 Sparta Greek Taverna and Pizza
- 7 Patina Brewing
- 8 RuRan Korean
- 9 Sushi-Fu
- 10 Cassandra Cake
- 11 Earls Kitchen + Bar
- 12 Si Senior Taqueria Fiesta Mexicana
- 13 Europe Bakery & Deli

## RECREATION

- 14 Port Coquitlam Community Centre
- 15 Terry Fox Library
- 16 Lafarge Lake Park
- 17 Gates Park
- 18 Lions Park
- 19 Traboulay PoCo Trail

## EDUCATION

- 20 Central Community Elementary
- 21 Ecole Pitt River Community Middle School
- 22 Ecole Riverside Secondary School
- 23 Douglas College Coquitlam Campus



# IT'S HAPPENING





## 10 WAYS TO LOSE YOURSELF IN POCO

- 1/** TRABOULAY POCO TRAIL for runners, walkers, dog walkers and strollers. **2/** COMMUNITY CENTRE swim, skate, work out and study late. **3/** GATES PARK play tennis or picnic, play soccer or spectate. **4/** COQUITLAM RIVER summer beach hangouts and inner tube floats. **5/** DONALD STORYWALK read a story while you stretch your legs.



TO WAYS TO LOSE YOURSELF IN POCO  
Field Notes.  
THE GOODS  
Po. Co.



- 6/** LAPIS & CO SPA get your lashes done, or maybe it's time for that tattoo? **7/** EUROPE BAKERY & DELI seriously good, baked goods. **8/** MATTEOS GELATO - who can resist gelato? Not you. **9/** CASSANDRA CAKE CO. award-winning cakes from a two time Food Network champion. **10/** PATINA BREWING CO. Brew House & BBQ - beer or BBQ? Who can decide?





## THE GREAT OUTDOORS.

A beautiful outdoor amenity space awaits.  
Enough comfortable seating for family and  
friends with fire pits to light up the evening.







## OUTDOOR DINING.

Host tasteful, and delicious, outdoor meals on warm BBQ days.





## THE GREAT INDOORS.

The indoor social space and lounge gives you ample room to host large gatherings with a full service kitchen to please the chef in the family. The space also features large built-in wall dividers for the flexibility to host one or two gatherings.





## THE KITCHEN HAVEN.

A modern design with home-y organic touches. The kitchens are places for creation and relaxation. Soft-close cabinetry and under-cabinet lighting combine to create a peaceful, soothing mood.

Make kitchen magic with a full premium appliance package from SMEG with top-of-the line fridge, induction range, low-profile hood fan and integrated dishwasher.

Two refined colour palettes for both kitchen and bath are available: Classic Light and Modern Dark.





Beautiful millwork touches provide both aesthetic appeal and convenient spots for storage.

## THE BATH SANCTUARY.

Walk-in showers with rainfall, shower wand combo suggest day spa as much as primary bath or ensuite. Porcelain wall and floor tile create a seamless, luxurious look elevated further by a floor-to-ceiling glass shower enclosure.





## THE LIVING OASIS.

All interior concepts were designed by Portico Design Group for living spaces that are equally as enjoyable to look at as to live in. Floorplans feature expansive balcony spaces that extend your indoors to the outdoors.



# THE DELIGHTFUL DETAILS.

Design is always in the little things: the contrast of materials, the way colours and textures create moods and tones, and not-so-simple considerations like placement and spacing. At Porthaven, we bring everything together in an elegant harmony.

Good design is also beautifully functional. We consider the storage needs of each suite carefully and curate important details like under sink waste centres, cabinet lazy susans, and removable cutlery dividers. Cooling available for your year around comfort.



Tonal and material shifts. The clean white uppers and darker more grounded lowers are unified by mid-tone wood laminate millwork.



# THOUGHTFUL AMENITIES.

In the amenity space kitchen, a kind of rectilinear design thinking prevails on the surfaces, in the tiles, cabinetry and walls. It provides an opportunity in contrast for soft surfaces and gentle curves. The simple swoop of the kitchen faucet provides a focal point.

Amenity details abound. For furry friends with messy paws, we added a dog wash. The Bike Clubhouse offers four e-bikes for shared resident use, plenty of bike storage spaces, a bike maintenance room, repair tools and bike washing area.

Our car share has a dedicated parking spot so there'll almost always be one close by.



The lounge is all about opposites. Light and dark. Concrete and soft fabric. Fixed wood grain and shifting flame.





# Enlivening Communities Through Mindful Development.

CREATING MEMORABLE SPACES ON THE WEST COAST OF CANADA FOR 25 YEARS



Gordon Wylie

President



Jeff Brown

Executive Vice President

## NORTHSTAR

Make spaces matter. Sounds simple, but the complexity of that goal is where we thrive. We bring meaning to urban spaces. Add substance to communities, and ultimately add value to people's lives.

We've been doing it for decades and have created some exceptional structures, a sterling reputation, and the kind of hard-won expertise that allows us to amplify the energy of a city every single time.

## TEAM

### ARCHITECT

RH Architects is a long-established firm that has designed numerous projects with commercial and multi-family residential in the lower mainland. Windsor Gate and M1, M2 and M3 are nearby examples of their work. The firm's philosophy is to create architecture that enhances peoples' lives. RH Architects have designed the building and are leading a group of talented consultants.



RH Architects Inc

### INTERIOR DESIGN

Portico Design Group is a Vancouver based full service interior design firm. We design interiors to be true to the project vision, the architecture, the landscape, the geography. We constantly challenge the expected.



### SALES & MARKETING

The Magnum Projects team has established an impeccable track record since 1991. Across the Lower Mainland, Magnum Projects consistently delivers impressive results for both developers and purchasers.



### CONSTRUCTION

Edge Construction is a group of diverse construction and design professionals who bring to the company well over 100 years of combined experience in the construction industry.







It's the next chapter for Downtown Port Coquitlam,  
and an incredible opportunity to be part of this  
dynamic transformation and brand new energy.  
Find a new home for you, your family and your furred  
friends at Porthaven. New era. New haven.

# PORTHAVEN | PO CO







**[Hello@PortHavenPoco.com](mailto>Hello@PortHavenPoco.com)**

**NORTHSTAR**

**MAGNUM**  
PROJECTS



This is not an offering for sale. Any such offerings may only be made with a Disclosure Statement. The developer reserves the right to modify or make substitutes to the building design, specifications and floorplans should they be necessary. Prices are subject to change without notice. Renderings, views, measurements, and layouts are for illustration purposes only. Sales and marketing by Magnum Projects. E.&O.E.