

# ELEVATE

AT COOPERS CROSSING

VESTAELEVATE.COM

## BRIMSTONE

TOWNHOMES AT COOPER'S CROSSING

2 STOREY TOWNHOMES

3 BEDROOM | 2.5 BATH + LOFT

1,782 - 1,846 SQ.FT.  
UNFINISHED BASEMENT

CORNER UNITS OFFERING  
MASTER ON MAIN LIVING



## VILLAGE

TOWNHOMES AT COOPER'S CROSSING

3 STOREY TOWNHOMES

3 BEDROOM | 2.5 BATH + FLEX

1,565 - 1,578 SQ.FT.  
SIZE RANGE

SPACIOUS OUTDOOR DECK SPACE  
WITH ADDED BALCONY

# VESTA

The developer reserves the absolute right to modify, cancel or extend this offer at any time without prior notice. Actual interiors, exteriors and views may be noticeably different than what is depicted in photographs. This is not an offering for sale. Any such offering may only be made with the applicable offer to purchase and agreement of sale and disclosure statement. All measurements are approximate. All Prices and availability are subject to change without notice. E. & O.E.

## SITE PLAN

- 3 storey townhomes
- 2 storey townhomes
- Plan type with second deck off the master bedroom
- Plan type with second deck off the living room





# 2 & 3 STOREY TOWNHOMES

# FEATURES



## HOMES THAT FIT THE LIFESTYLE

- The unique collection of well-designed townhomes that blend modern aesthetics with traditional architectural elements.
- These homes feature 3-bedrooms + 2.5 bathrooms and flex/unfinished basement to use as storage or upsize your living space by choosing to add a finished basement. Beautifully designed with broad roof gable profiles and overhangs, adding architectural interest to the roofs and fully landscaped yards.
- Elegantly designed interiors featuring designer-selected colour palettes.
- Stylish 4" baseboards and 3" window and door casings.
- Beautiful interior doors with stylish chrome hardware across the home.
- Spacious master bedrooms feature a deluxe ensuite bathroom and a large walk-in closet.
- Elegant luxury vinyl plank flooring throughout the main living space; plush carpeting in bedrooms.

## SKILLFULLY DESIGNED HOME

- Spacious open concept floor plans strategically designed to utilize every inch of the living space.
- Low consumption pot lights and ceiling and wall fixtures.
- 9-foot ceilings throughout the main floor.
- Oversized Low-E double glazed windows
- Deck with aluminum railing
- Digital programmable thermostat.

## GOURMET KITCHENS

- Spacious center island with quartz countertops.
- A double basin stainless steel sink with a sleek chrome pull-out vegetable sprayer.
- Modern flat panel kitchen cabinets of 36" (uppers) with chrome handles.
- Designer-selected full tile backsplash.
- Convenient storage features include pot drawers and full depth cabinets over fridge.

- Premium stainless steel kitchen appliances package.

## SPA-INSPIRED BATHROOMS

- Deep soaker tub with handset tile surround.
- Elegant Delta chrome faucets.
- Modern flat panel cabinets with quartz countertops and under mounted sink.
- Convenient powder room on main floor.
- Private master ensuite features a walk-in shower and full size vanity

## ULTIMATE IN COMFORT AND SECURITY

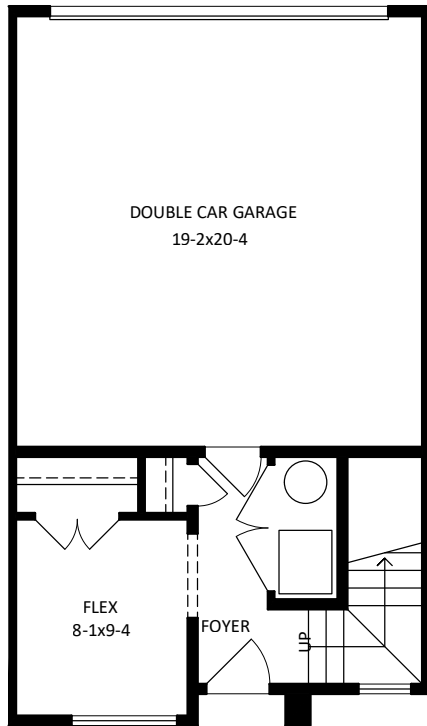
- Cozy, warm, and quiet R-22 insulation in the walls and R-50 in the ceiling.
- 92% high efficiency forced air furnace.
- High efficiency electric 50-gallon hot water tank.
- Double-glazed energy efficient Low-E windows.
- Built-in smoke detectors and carbon monoxide detectors for your safety.

## PEACE OF MIND

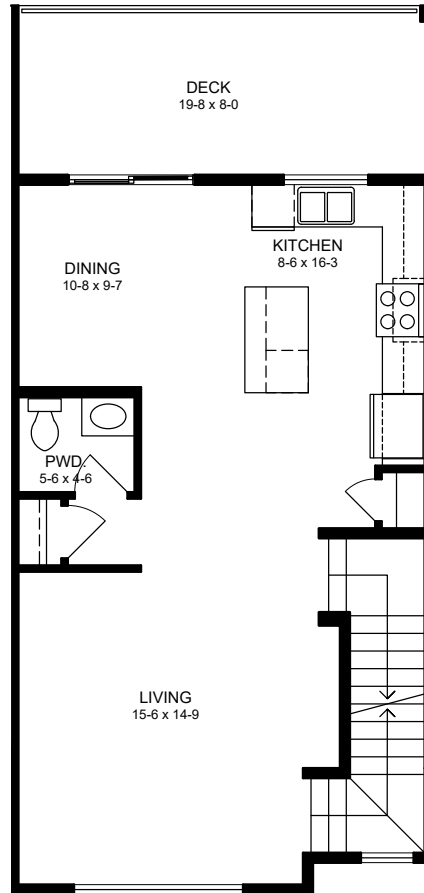
- Built by Vesta Properties, a reputable builder/developer with over 32 years of industry experience building over 6,000 homes in award-winning neighbourhoods across BC and Alberta.
- All homes are backed by Vesta's full time service department.
- Certified new home warranty provided by National New Home Warranty.

## CUSTOMIZE YOUR HOME

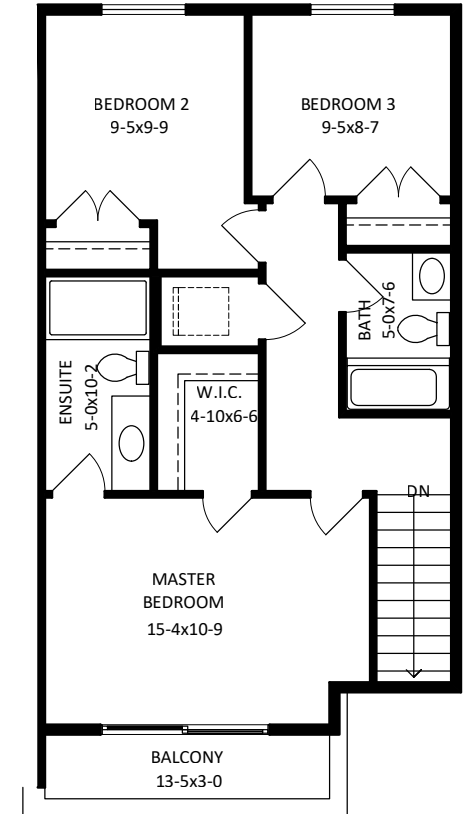
- Personalize your home by choosing from 3 professionally designed colour palettes to reflect your individual taste and style.
- Choose to add a finished basement to upgrade your living space.
- Upgrade from our list of customization options.



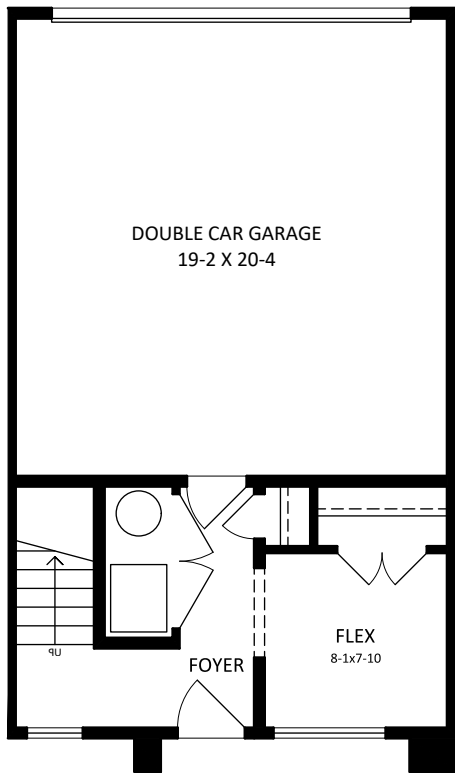
Lower 247 SQ.FT.  
Garage 417 SQ.FT.



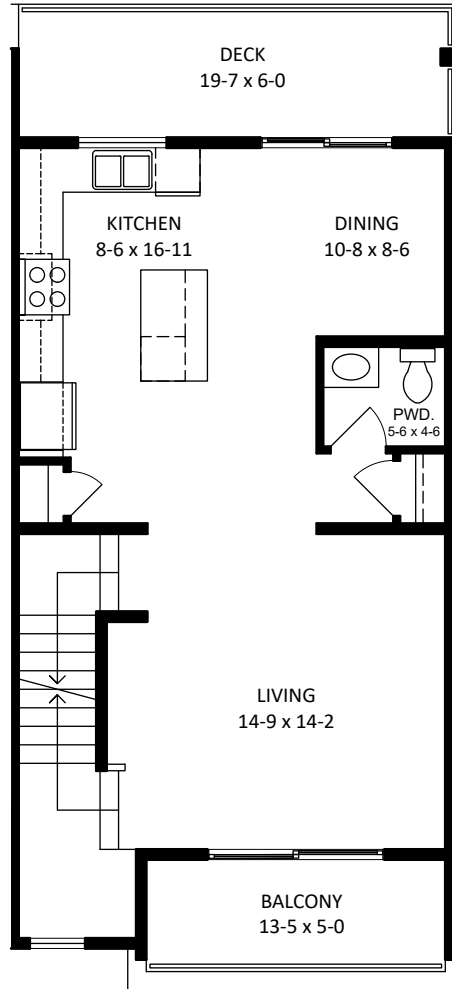
Main 671 SQ.FT.



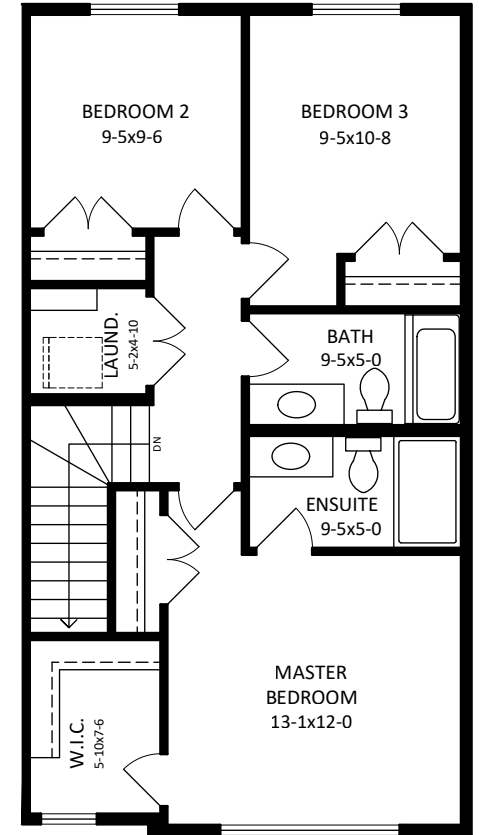
Second 647 SQ.FT.



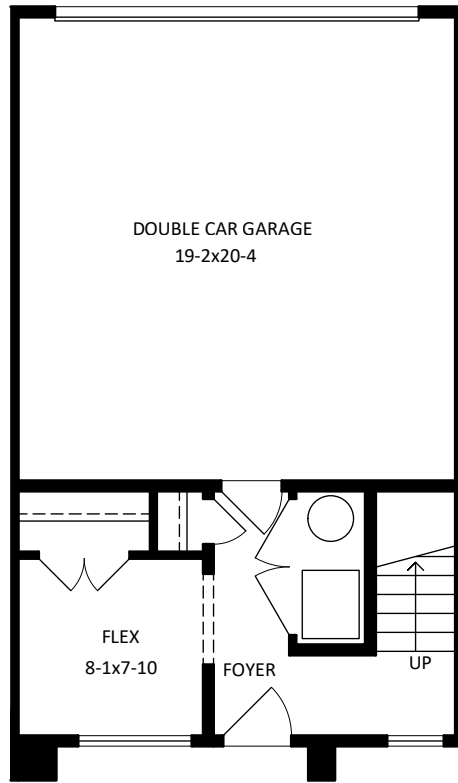
Lower 233 SQ.FT.  
Garage 417 SQ.FT.



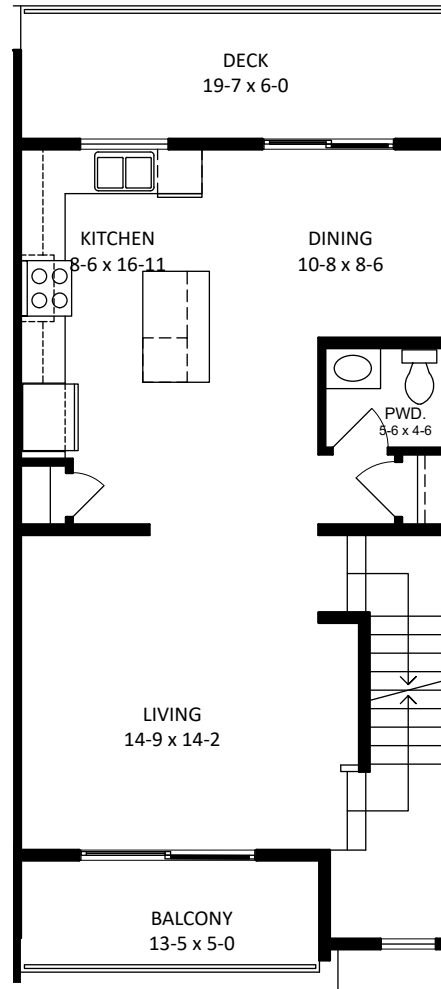
Main 650 SQ.FT.



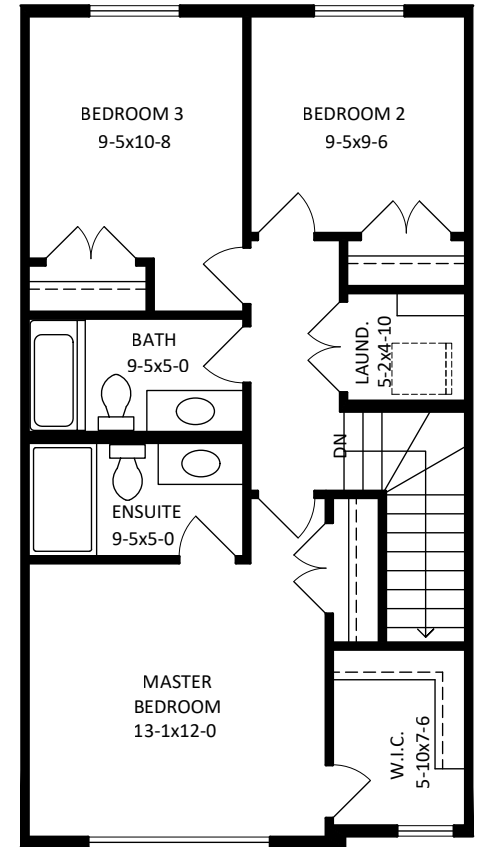
Second 695 SQ.FT.



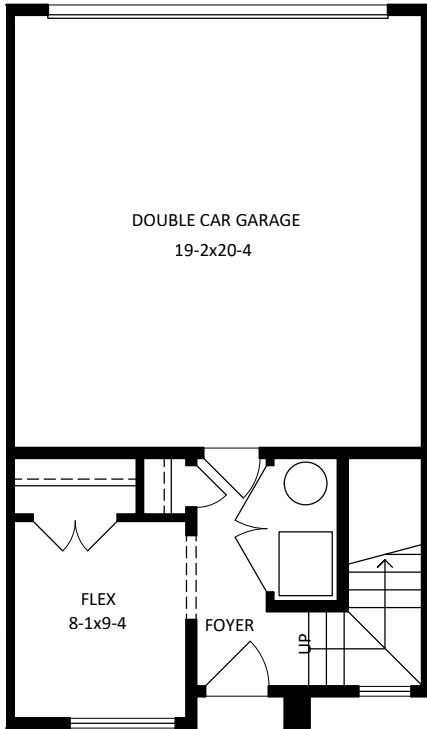
Lower 232 SQ.FT.  
Garage 414 SQ.FT.



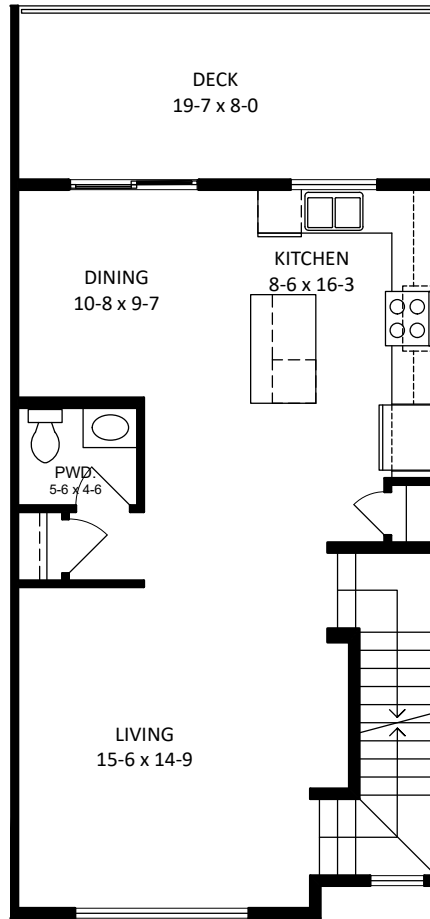
Main 650 SQ.FT.



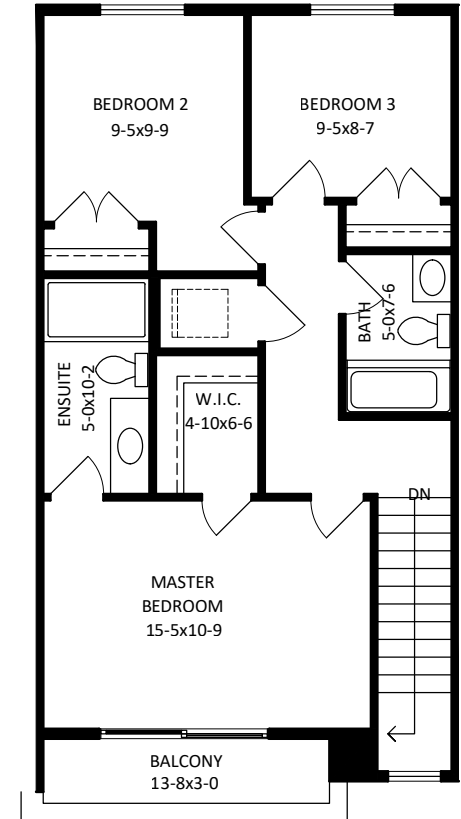
Second 691 SQ.FT.



Lower 245 SQ.FT.  
Garage 414 SQ.FT.



Main 667 SQ.FT.

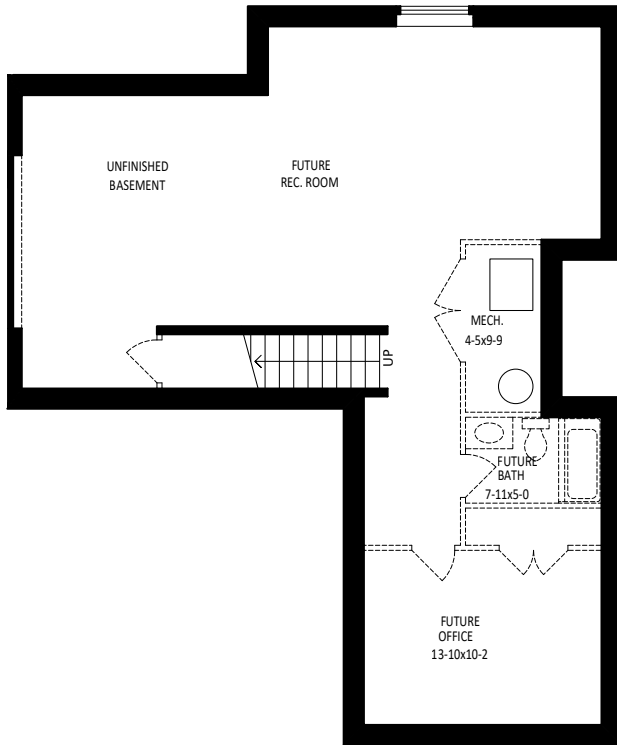


Second 653 SQ.FT.

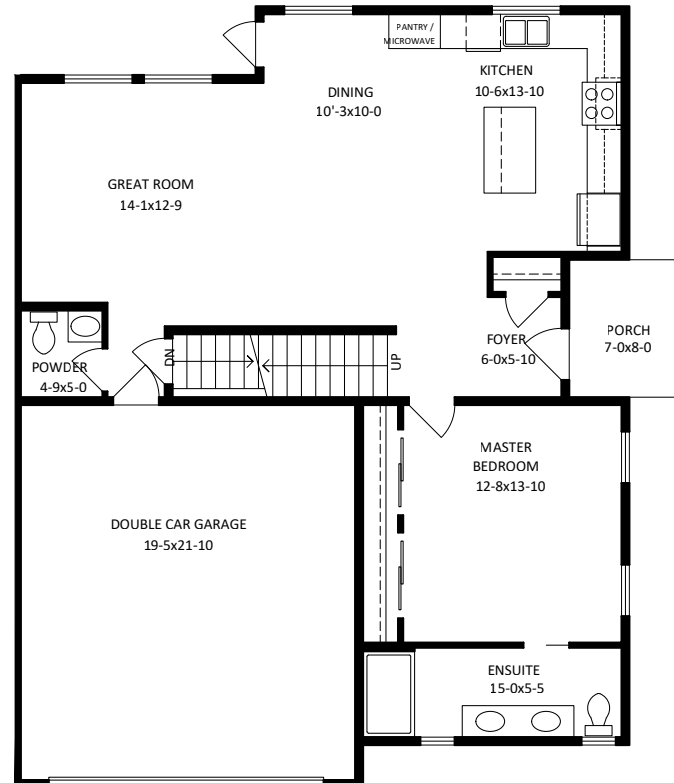
## THE CHRYSALIS (C1)

1,782 SQ.FT. + 1,070 UNFINISHED BASEMENT

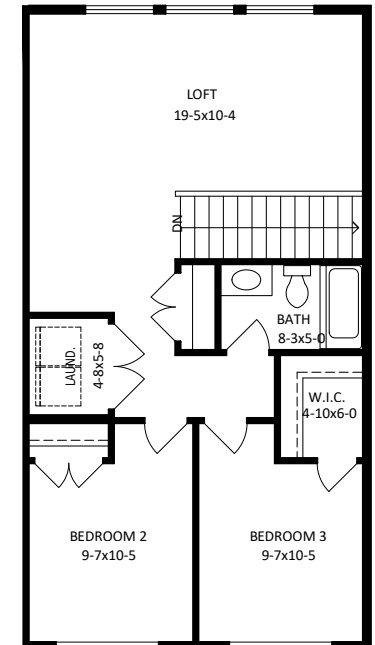
3 BEDROOM + LOFT | 2.5 BATH



Unfinished Basement 1,070 SQ.FT.



Main 1,062 SQ.FT.  
Garage 442 SQ.FT.



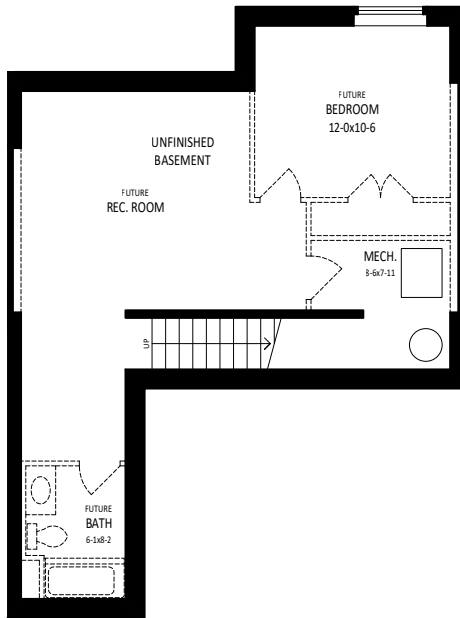
Second 720 SQ.FT.



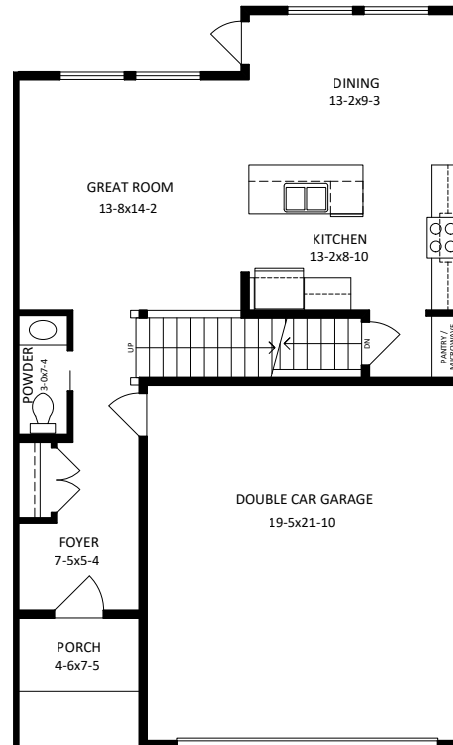
## THE CYNTHIA (C2)

1,836 SQ.FT. + 718 SQ.FT. UNFINISHED BASEMENT

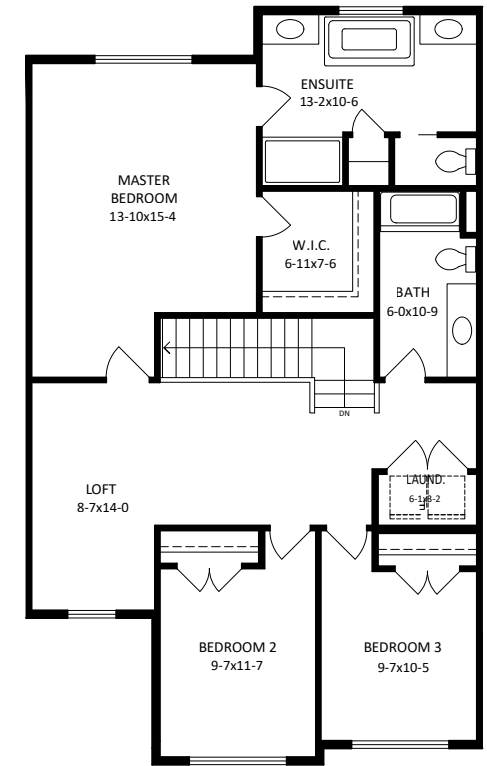
3 BEDROOM + LOFT | 2.5 BATH



Unfinished Basement 718 SQ.FT.



Main 711 SQ.FT.  
Garage 445 SQ.FT.

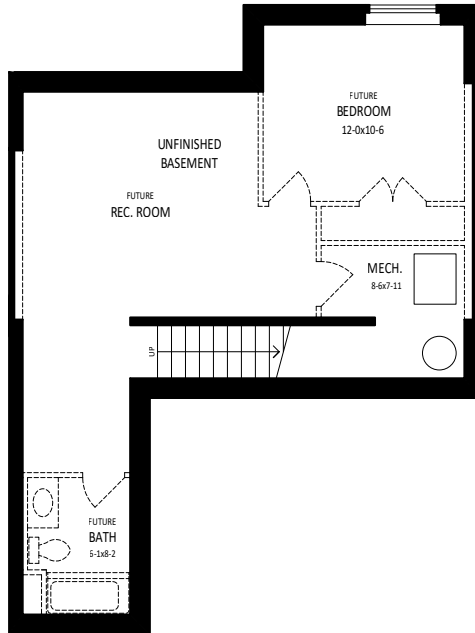


Second 1,125 SQ.FT.

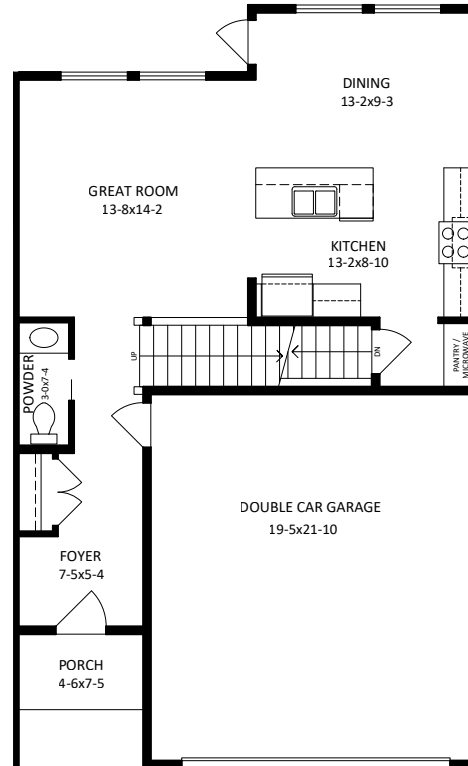
## THE CELESTE (C3)

1,846 SQ.FT. + 718 SQ.FT. UNFINISHED BASEMENT

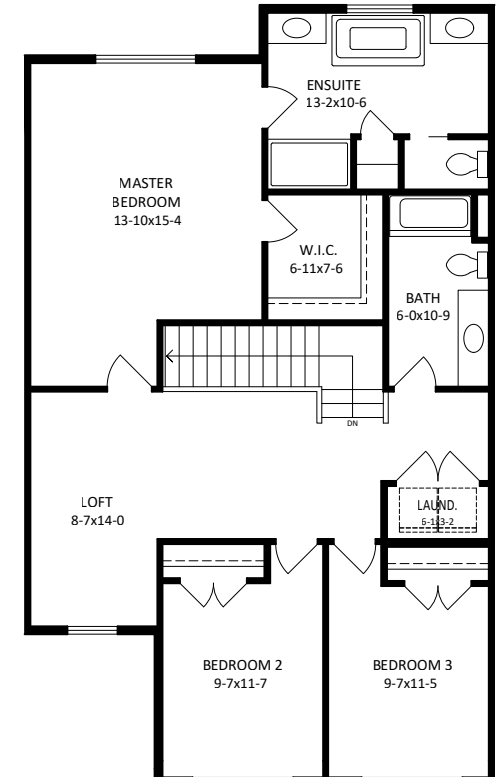
3 BEDROOM + LOFT | 2.5 BATH



Unfinished Basement 718 SQ.FT.



Main 711 SQ.FT.  
Garage 445 SQ.FT.

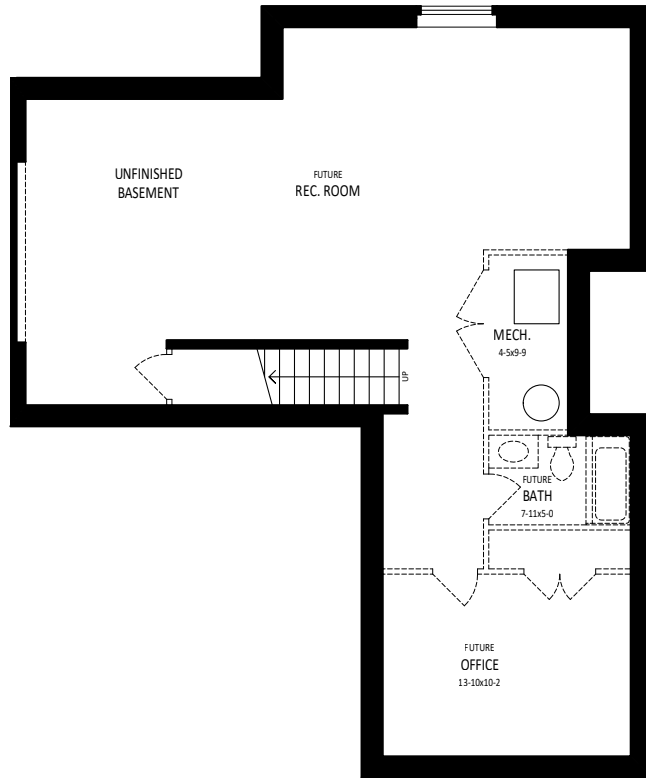


Second 1,135 SQ.FT.

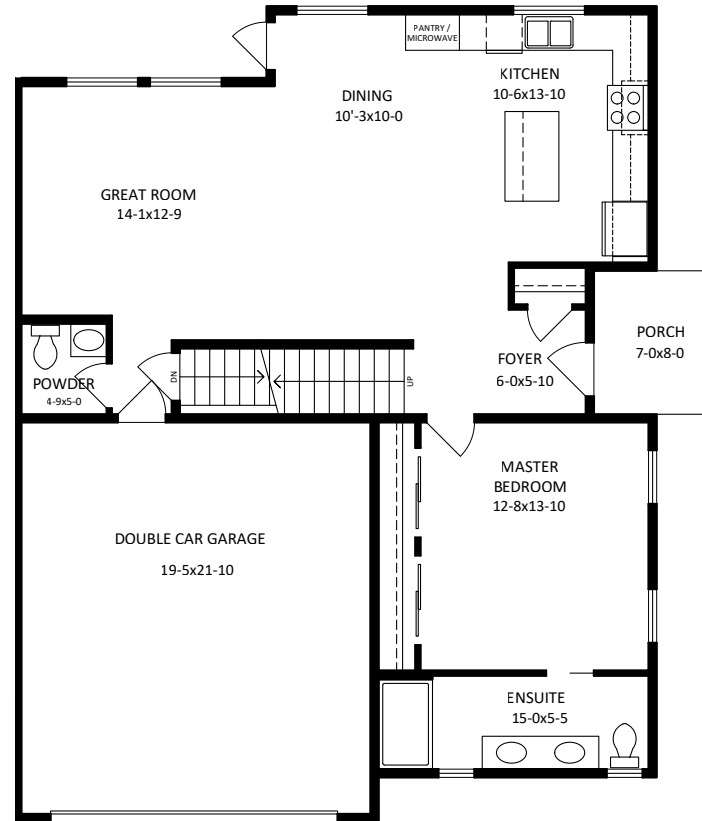
## THE CASSIA (C4)

1,793 SQ.FT. + 1,070 SQ.FT. UNFINISHED BASEMENT

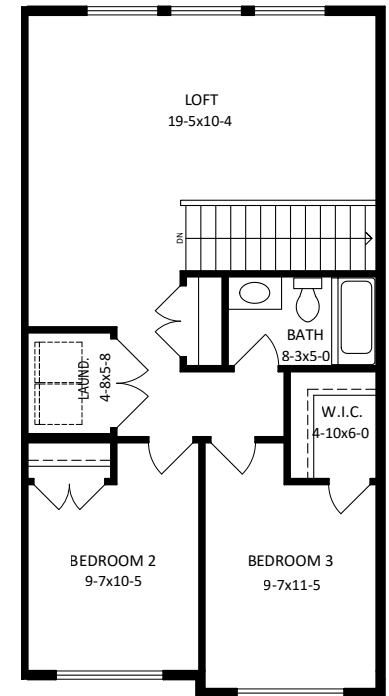
3 BEDROOM + LOFT | 2.5 BATH



Unfinished Basement 1,070 SQ.FT.



Main 1,062 SQ.FT.  
Garage 442 SQ.FT.



Second 731 SQ.FT.