



HAMILTON
HEIGHTS



The Birmingham

3030 SQ.FT.

3 BEDROOMS | 2.5 BATHS | 3 CAR GARAGE

A Signature Home Collection exclusively by



Main Floor

1444 Sq.Ft.

THE
BIRMINGHAM
3030 SQ.FT.



Upper Floor

1586 Sq.Ft.

3 Bedrooms

2½ Bathrooms

3 Car Garage



HARDWOOD

DECK

CARPET

CONCRETE

TILE

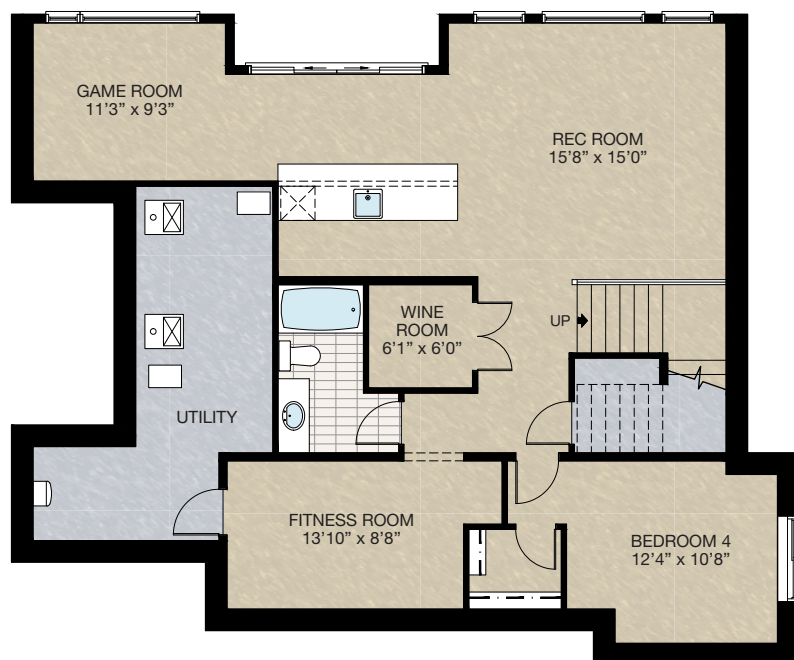
LVP

Featured Options

THE
BIRMINGHAM
3030 SQ.FT.

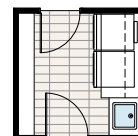
☐ SELECT-5 BASEMENT DEVELOPMENT OPTION

- 1054 sq.ft. developed area
- Add 1 riser to stairwell for 9'0" basement ceiling (8'9" Headroom clearance)



☐ SELECT-6 LAUNDRY ROOM OPTION

- Add laminate counter with gables over washer & dryer with wash control knobs
- Add upper cabinet above washer & dryer with hanging rod
- Add 2'-4.5" lower cabinet with sink

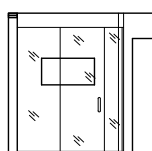
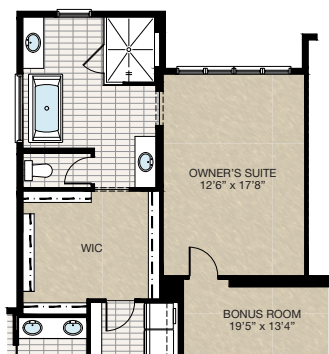


Featured Options

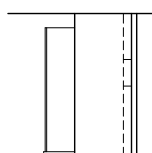
THE
BIRMINGHAM
3030 SQ.FT.

SELECT-1 ENSUITE OPTION

- Add 2' cantilever adding 26 sq.ft.
- Re-design owner's suite & walk-in closet



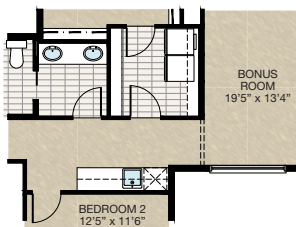
Front Elevation View



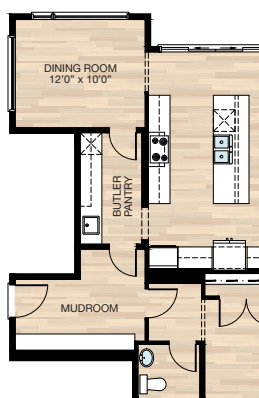
Side Elevation View

SELECT-2 UPPER FLOOR WET BAR OPTION

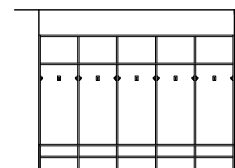
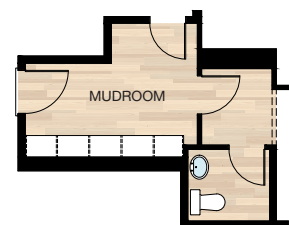
- Add upper & lower cabinets
- Add bar fridge & sink



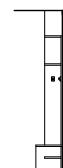
SELECT-4 BUTLER PANTRY OPTION



SELECT-3 MUDROOM MDF LOCKERS OPTION



Front Elevation View



Side Elevation View

Trico Homes is a local home builder, with new single and multi-family homes for sale in Calgary, DeWinton, Okotoks, Chestermere, Cochrane, and Airdrie. Offering a great selection of starter, move-up, semi-estate and estate models in numerous communities, you'll find the house that's just right for you! Look for this model and many others in Ambleton, Arbour Lake, Belmont, Carrington, Chelsea, CoachRidge, Cornerbrook, D'Arcy, Dawson's Landing, Hamilton Heights, Heritage Hills, Homestead, Legacy, Midtown, PineCreek, Precedence, Rivercrest, Seton, Sirocco, Verona West Townhomes, West83 Townhomes and Wolf Willow.

Renderings are artist's conceptions only and may vary by community and lot selection. Prices, floorplans, specifications and dimensions are approximate and are subject to change without notice. E.&O.E. © All rights reserved, including the right if reproduction in the whole or in part without the permission of Trico Homes. Revision: Sept 8, 2023.



Learn more at tricohomes.com





HAMILTON
HEIGHTS



The Lexington

3171 SQ.FT.

3 BEDROOMS | 2.5 BATHS | 3 CAR GARAGE

A Signature Home Collection exclusively by



Main Floor

2157 Sq.Ft.

THE
LEXINGTON
3171 SQ.FT.



HARDWOOD

DECK

CARPET

CONCRETE

TILE

LVP

Upper Floor

1014 Sq.Ft.

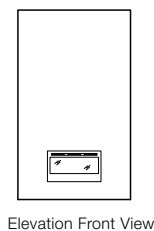
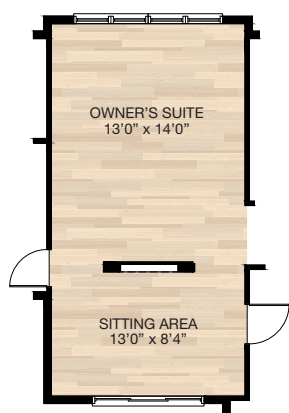
- 3 Bedrooms
- 2½ Bathrooms
- 3 Car Garage



Featured Options

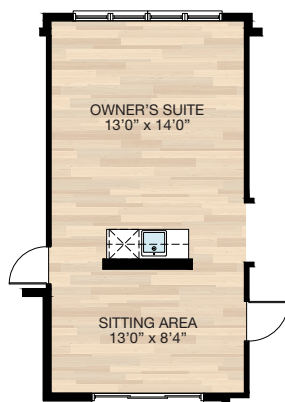
THE
LEXINGTON
3171 SQ.FT.

SELECT-4
OWNER'S SUITE SITTING AREA
ELECTRIC FIREPLACE OPTION

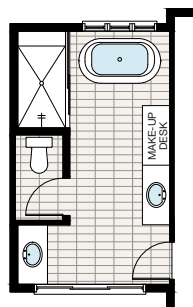


Elevation Front View

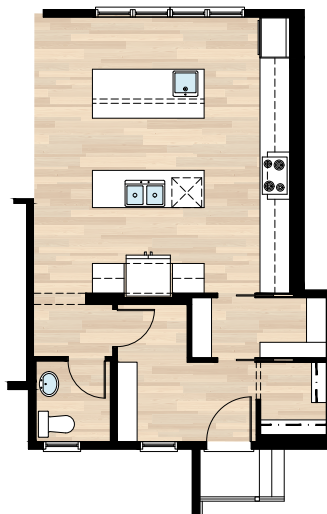
SELECT-5
OWNER'S SUITE COFFEE BAR OPTION
• Add light switch & downlight for coffee bar



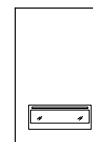
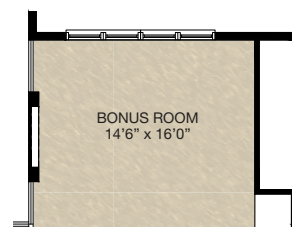
SELECT-6
OWNER'S ENSUITE OPTION



SELECT-7
KITCHEN TWO ISLAND OPTION
• Delete 5'0" x 9'0" island
• Add 2 islands
• Add vegetable sink



SELECT-8
BONUS ROOM ELECTRIC FIREPLACE
OPTION



Elevation Front View

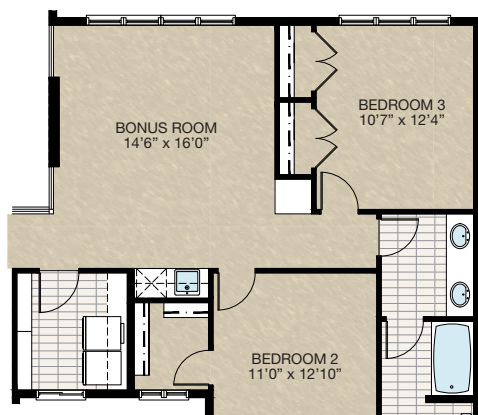
SELECT-9
LAUNDRY ROOM OPTION
• Add laminate counter with gables over washer & dryer with wash control knobs
• Add upper cabinet above washer & dryer with hanging rod
• Add 2'6.5" lower cabinet with sink



Featured Options

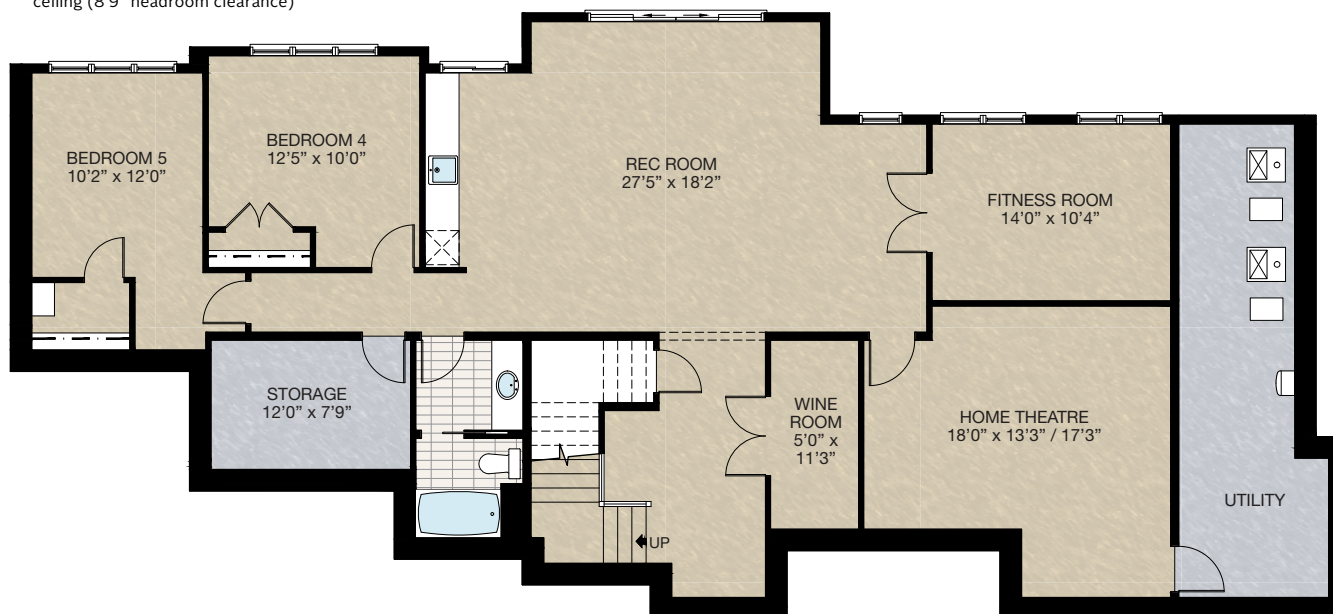
THE
LEXINGTON
3171 SQ.FT.

SELECT-10
BONUS ROOM WET BAR OPTION



SELECT-11
BASEMENT DEVELOPMENT OPTION

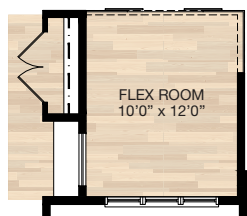
- 1749 sq.ft. developed area
- Add 1 riser to stairwell for 9'0" basement ceiling (8'9" headroom clearance)



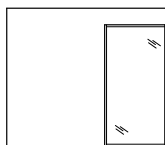
Featured Options

THE
LEXINGTON
3171 SQ.FT.

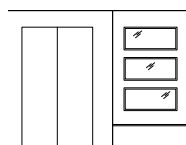
☐ **SELECT-1** FLEX ROOM GLASS WALL OPTION



Elevation Front View
From Nook

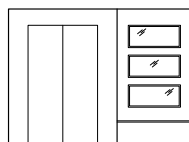
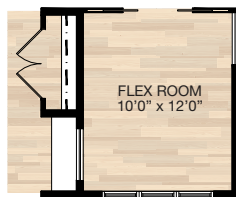


Elevation Side View
From Kitchen

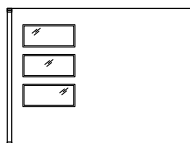


Elevation View At
Foyer

☐ **SELECT-2** FLEX ROOM WITH GLASS INSERTS & DOOR OPTION

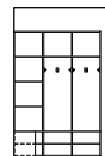
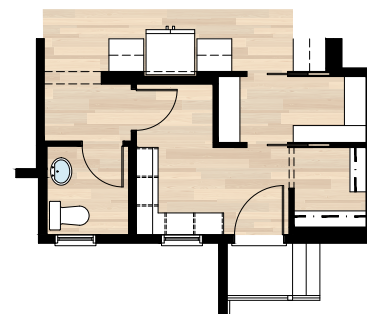


Elevation View At
Foyer

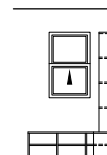


Elevation View Inside
Flex Room

☐ **SELECT-3** MUDROOM MDF LOCKERS OPTION



Elevation Front View



Elevation Side View

Trico Homes is a local home builder, with new single and multi-family homes for sale in Calgary, DeWinton, Okotoks, Chestermere, Cochrane, and Airdrie. Offering a great selection of starter, move-up, semi-estate and estate models in numerous communities, you'll find the house that's just right for you! Look for this model and many others in Ambleton, Arbour Lake, Belmont, Carrington, Chelsea, CoachRidge, Cornerbrook, D'Arcy, Dawson's Landing, Hamilton Heights, Heritage Hills, Homestead, Legacy, Midtown, PineCreek, Precedence, Rivercrest, Seton, Sirocco, Verona West Townhomes, West83 Townhomes and Wolf Willow.

Renderings are artist's conceptions only and may vary by community and lot selection. Prices, floorplans, specifications and dimensions are approximate and are subject to change without notice. E.&O.E.
© All rights reserved, including the right if reproduction in the whole or in part without the permission of Trico Homes. Revision: Sept 11, 2023.



Learn more at tricohomes.com





HAMILTON
HEIGHTS



The Woodside

2240 SQ.FT.

2 BEDROOMS | 2.5 BATHS | 3 CAR GARAGE

A Signature Home Collection exclusively by



Main Floor

2240 Sq.Ft.


THE
WOODSIDE
2240 SQ.FT.



Optional Basement

1854 Sq.Ft.

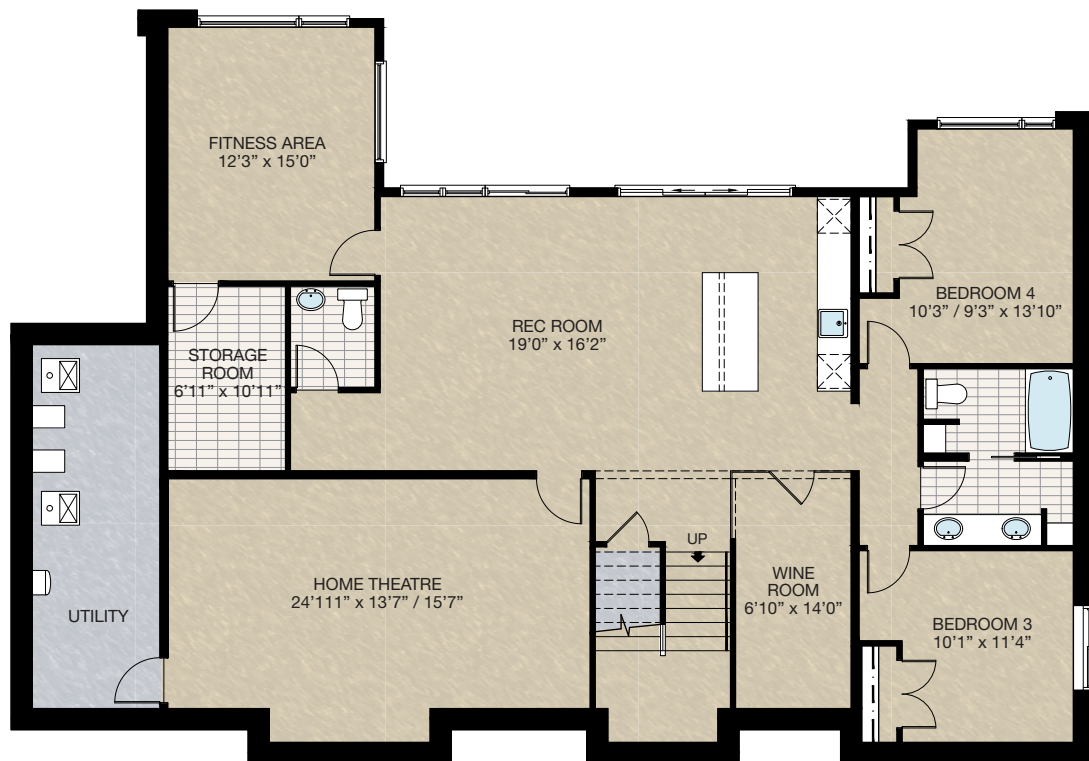
 2 Bedrooms

 2½ Bathrooms

 3 Car Garage

SELECT-10 **BASEMENT DEVELOPMENT OPTION**

- 1854 sq.ft. developed area
- Add 1 riser to stairwell for 9'0" basement ceiling (8'9" headroom clearance)



HARDWOOD

DECK

CARPET

CONCRETE

TILE

LVP

tricohomes.com

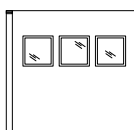
Featured Options

THE
WOODSIDE
2240 SQ.FT.

☐ SELECT-6 FLEX ROOM WITH GLASS INSERTS & DOOR OPTION

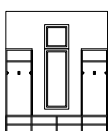


Plan View



Elevation View

☐ SELECT-7 MUDROOM LOCKERS OPTION



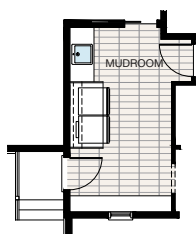
Front Elevation View



Side Elevation View

☐ SELECT-8 LAUNDRY ROOM OPTION

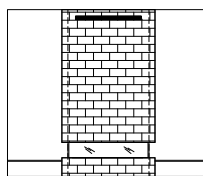
- Add laminate counter with gables over washer & dryer with wash control knobs
- Add upper cabinet above washer & dryer with hanging rod
- Add 4'6" lower cabinet with sink



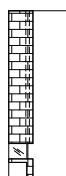
☐ SELECT-9 GREAT ROOM 3 SIDED BAY FIREPLACE OPTION



Plan View



Front Elevation View



Side Elevation View



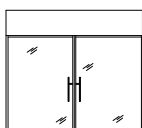
Featured Options

THE
WOODSIDE
2240 SQ.FT.

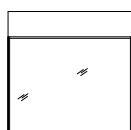
SELECT-1 FLEX ROOM GLASS WALL & DOORS OPTION



Plan View



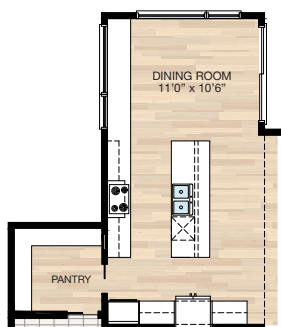
Front Elevation View



Side Elevation View

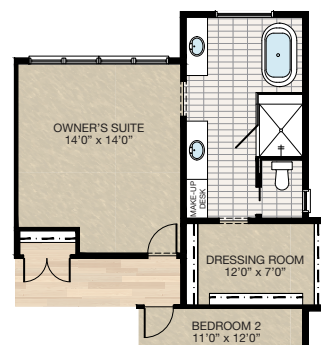
SELECT-2 KITCHEN OPTION

- Additional 10'6" lower cabinetry to kitchen



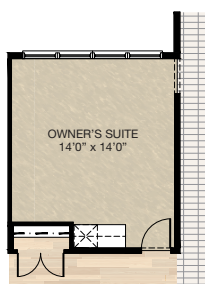
SELECT-3 ENSUITE OPTION

- Additional 16 sq.ft.
- Cantilever closet to side
- Tiled shower from 42" x 96" to 48" x 66"
- Delete 8'0" dual vanity
- Add two separate vanity with make-up desk

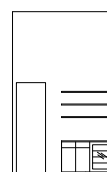


SELECT-4 OWNER'S SUITE COFFEE BAR OPTION

- Add light switch & downlight for coffee bar



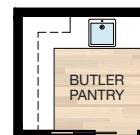
Plan View



Elevation View

SELECT-5 BUTLER PANTRY OPTION

- Delete 2'8" pocket door between pantry & kitchen
- Added one downlight



Trico Homes is a local home builder, with new single and multi-family homes for sale in Calgary, DeWinton, Okotoks, Chestermere, Cochrane, and Airdrie. Offering a great selection of starter, move-up, semi-estate and estate models in numerous communities, you'll find the house that's just right for you! Look for this model and many others in Ambleton, Arbour Lake, Belmont, Carrington, Chelsea, CoachRidge, Cornerbrook, D'Arcy, Dawson's Landing, Hamilton Heights, Heritage Hills, Homestead, Legacy, Midtown, PineCreek, Precedence, Rivercrest, Seton, Sirocco, Verona West Townhomes, West83 Townhomes and Wolf Willow.

Renderings are artist's conceptions only and may vary by community and lot selection. Prices, floorplans, specifications and dimensions are approximate and are subject to change without notice. E.&O.E. © All rights reserved, including the right if reproduction in the whole or in part without the permission of Trico Homes. Revision: Sept 11, 2023.



Learn more at [tricohomes.com](https://www.tricohomes.com)

