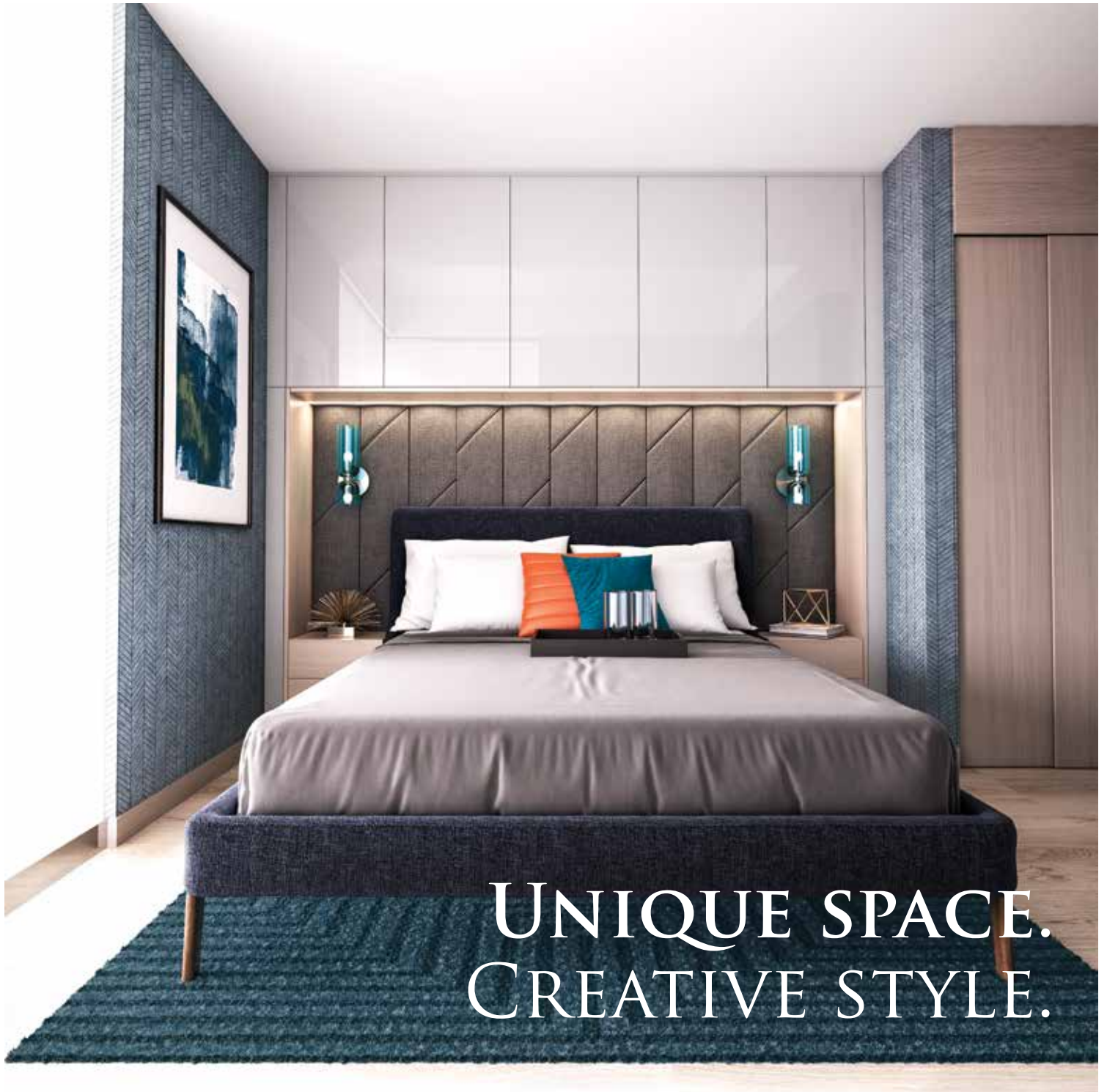


# INTERIOR DÉCOR

KING'S LANDING ISSUE

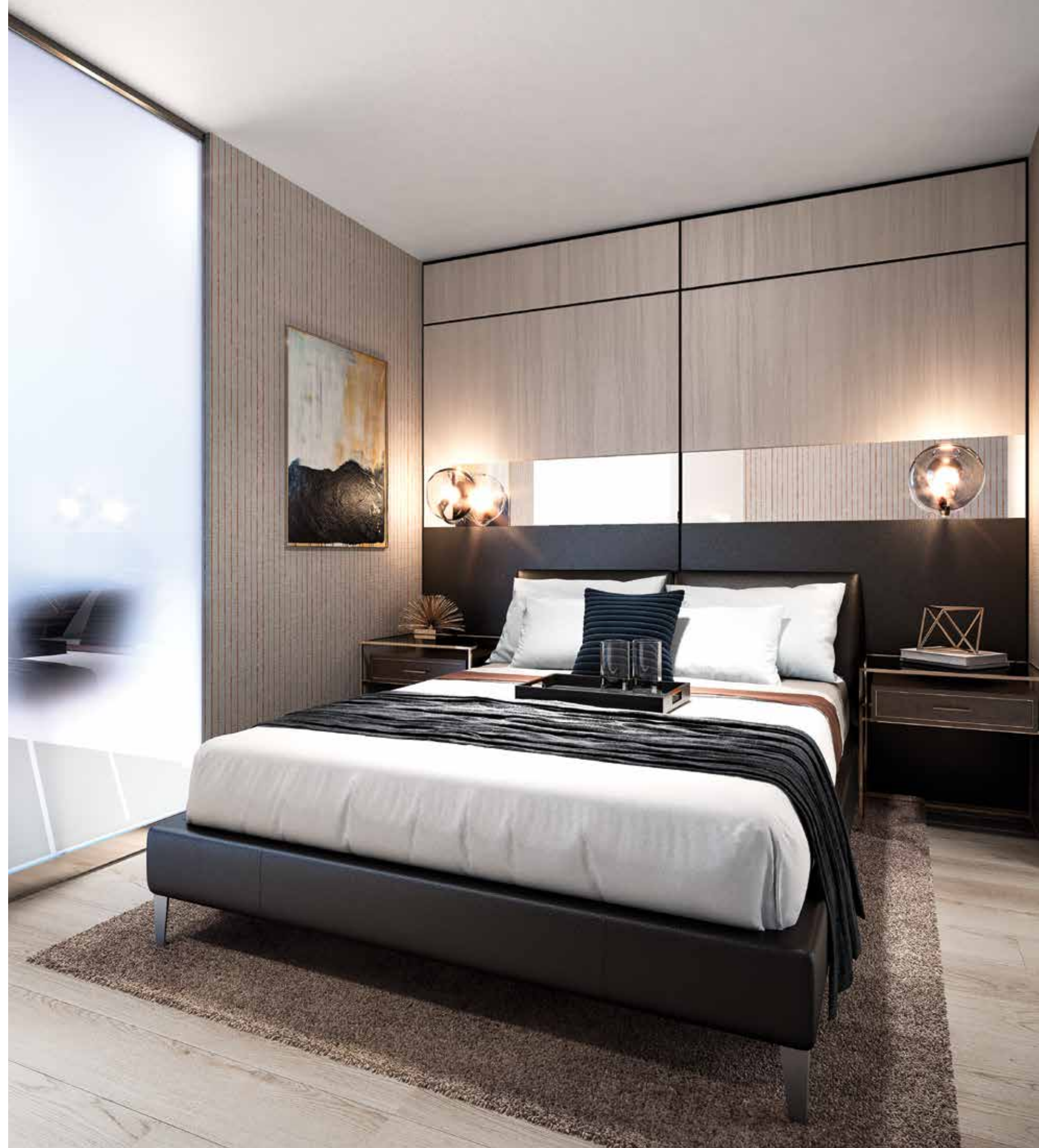
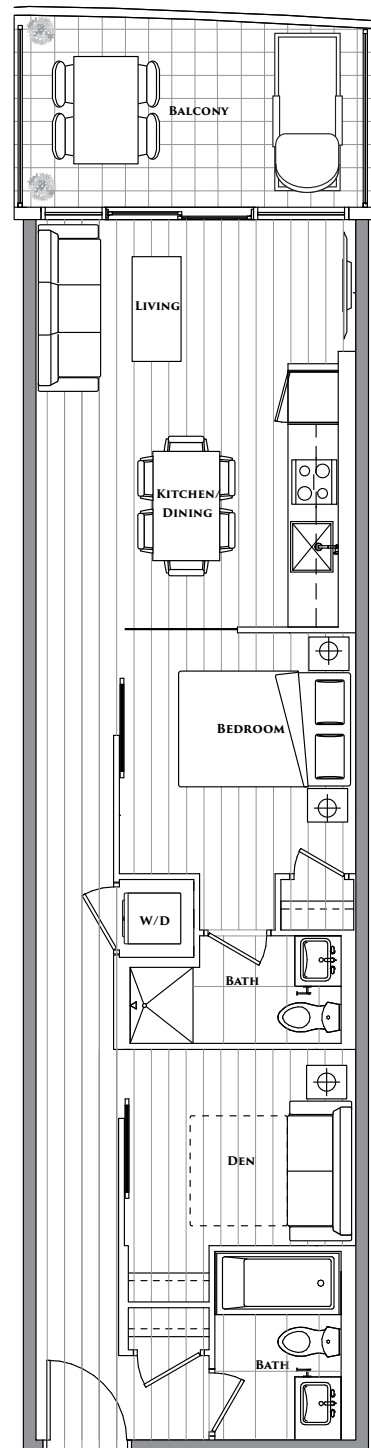


# UNIQUE SPACE. CREATIVE STYLE.

For city convenience, shorter commutes and better work/life balance, people today choose condo living in vibrant, urban areas.

Condos come in many shapes and sizes. The more unique the layout, the more creative you can be with functionality and flexibility. For example, a 688 sq. ft. plus balcony floor plan at King's Landing at Concord Park Place in North York is a narrow-shaped layout with boundless possibilities.

Here are some ideas and inspiration from Concord's designers to demonstrate how streamlined condo living is big on style and creativity for personalized enjoyment and efficiency.





# EXPAND YOUR THINKING.

Capitalize on the 9 ft. ceilings in this suite with tall wall units, picture railings, book shelves or hideaway accent lighting for refined style.



Adorn hallways with artwork and feature lighting to guide sightlines and pique interest.



Place mirrors and glasswork in strategic spots to add depth, reflect light and visually expand entire rooms.

Illumination is key. Use ambient and task lighting to maximize multi-purpose and cross function.

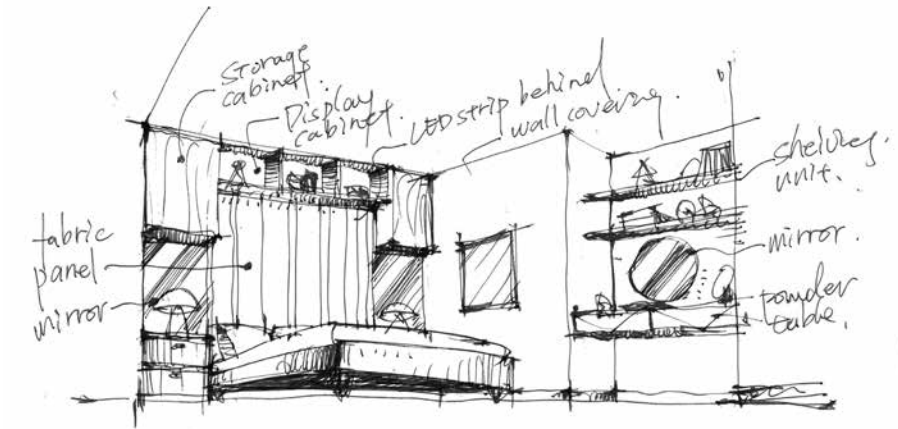




Here are **two** conceptual designs for the same suite to inspire your lifestyle:



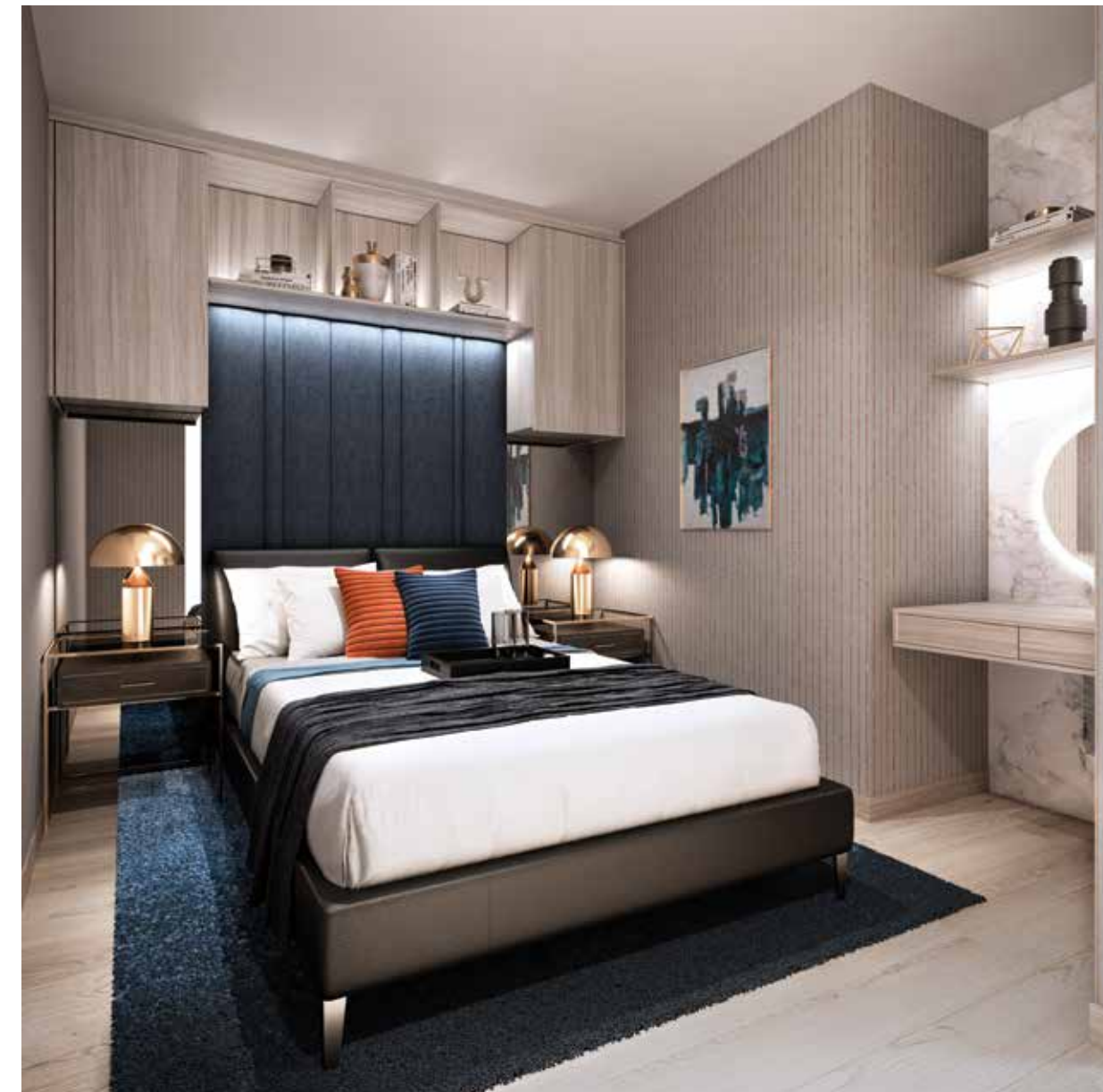
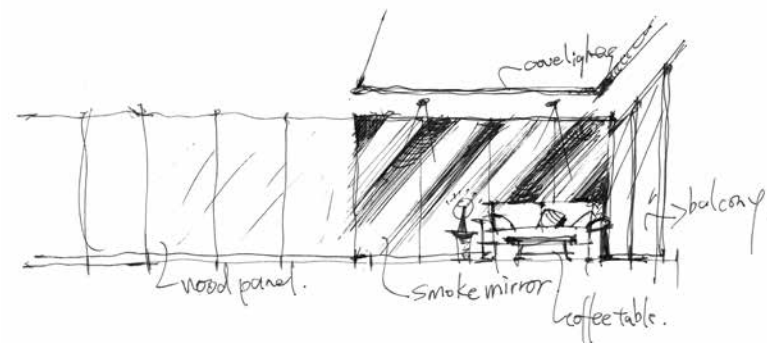
- Distinctive, powerful living room design elements feature high-gloss lacquer panels and sleek black porcelain tiles.
- Understated pinstriped bedroom walls add class while smart-storage cabinetry and closets avoid clutter.



# 1 ELEGANCE

Space of any size and shape can be sophisticated. Here are some designer touches which add loads of luxury as well as charm:

- Modern elite concept reminiscent of Europe's premier boutique hotels.
- Warmth of wood veneers, elegant fabric panels and smoked-glass mirrors create texture, depth and visually enlarge space as well as light bounce.

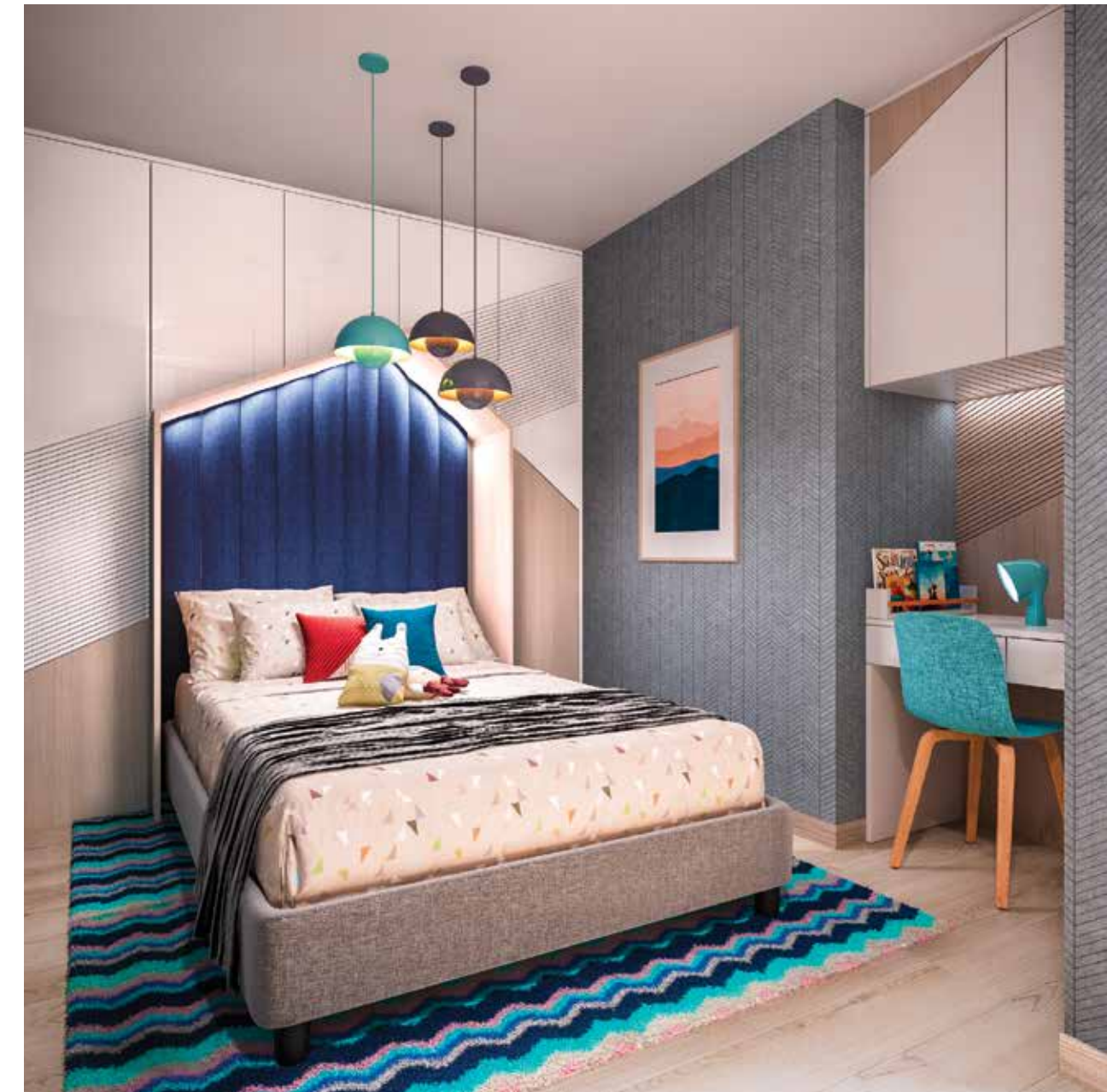
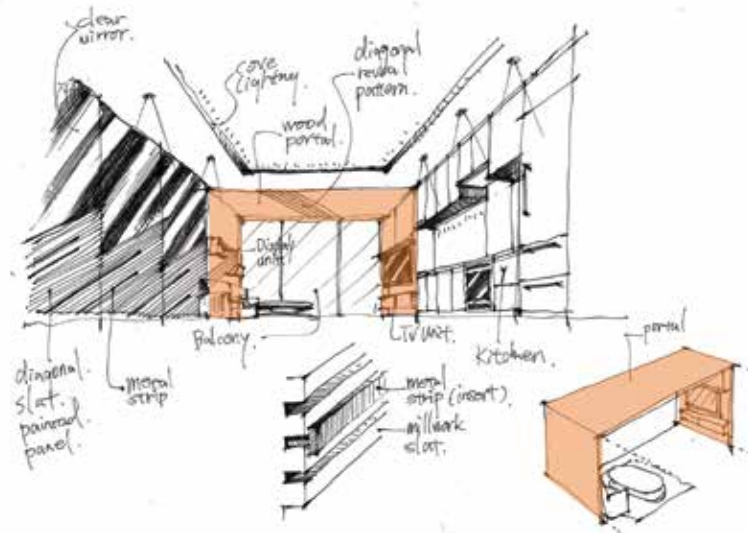




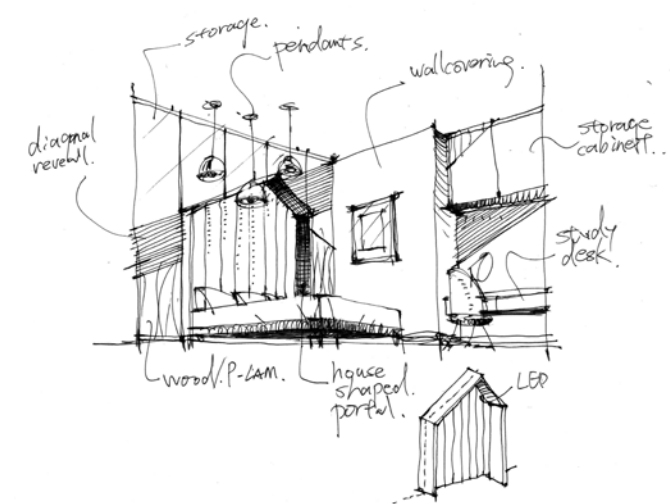
# 2 Whimsy

A unique layout has great potential to be fun. In this case, designer details infuse the space with nostalgic flair and positive energy:

- Retro-modern concept juxtaposing a cool palette with geometric design features in a variety of hues and shapes.
- Wood portal framing, black fabric panels, tall diagonal mirrors and gold-lined wall coverings create both a dynamic and dramatic effect.

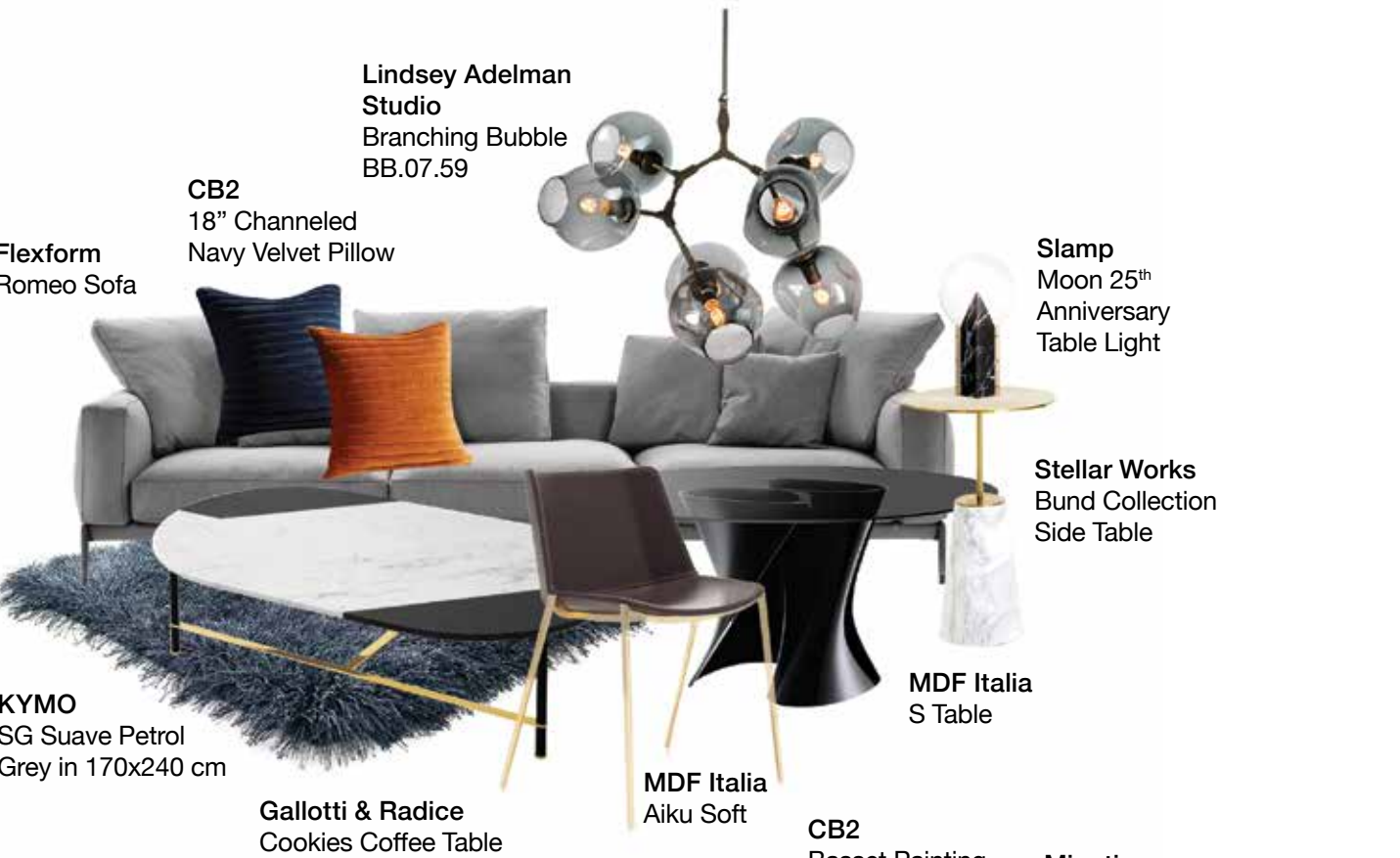


- A herringbone wall structure anchors the dining room, with dark blue and grey highlights throughout.
- A Mondrian-inspired mirror enlarges space and light, while muted hues of cerulean, cyan, navy, lilac and coral balance whimsy with levity.





Recreate the look:



ELEGANCE



Whimsy

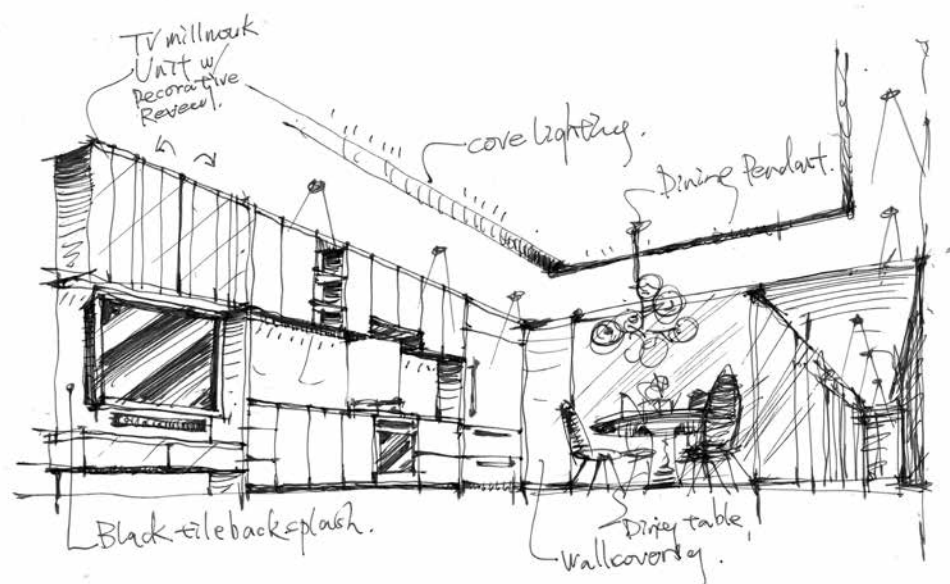




LIV is where tech/design/culture meet. They are an award-winning design studio, first set out in 2012 with a strong focus on Interior Design. Since their inception, they have incorporated other aspects of design into their practice, including branding, animation, illustration and CG artistry to name a few, all while growing their original core expertise in Interior Design.

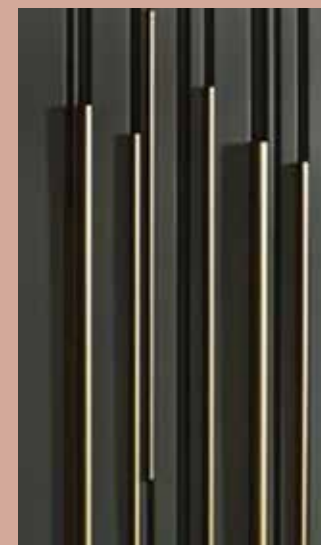
King's Landing suite design project lead by: Dickson Chu, Senior Interior Designer and Yuansheng He, Interior Designer of LIV.

*"Interior design to us goes beyond how things look – we design with the human spatial experience in mind; creating timeless spaces that marries with functionality."*  
- Olivia Lam, Principal



Sketch by Dickson Chu, Senior Interior Designer

"At LIV we always pay close attention to two key elements – functionality and lighting uniformity. In every design scenario, it is important for LIV to balance aesthetics and functionality to create an inviting, useful space. With the challenge of a narrow-shaped layout plan, we demonstrated to buyers how to achieve the best functionality from the space by selecting the right furniture and material finishes, and by incorporating smart storage solutions. Also, proper lighting helps create a visually dynamic space. The cove lighting we added to the living room and bedrooms not only acts as ambient lighting, it also enhances the overall mood and immersive experience of the visitor." - Dickson Chu, Senior Interior Designer



King's Landing project concept images





# LUXURY IS THE EVERYDAY LIFESTYLE

King's Landing is the noblest of addresses in Toronto. Prestige bestows the most impressive views of eight acres of parkland. Architecture reflects British aristocracy, with a pavilion-style podium crowned by a trio of towers. Nowhere else exceeds high expectations quite like this.



## DISTINCTIVE CHARACTER.

Remarkable architectural furls flow as one fluid curvature building upon another, arcing sleekly skyward.

The inventive twist of lustrous railings adorning curved balconies reflect European flair and signature stature.







## IMPRESSIVE RECEPTION.

The majesty of this lobby is stunning, with a soaring glass atrium, sunlit café and the rich tones of a grand piano beneath the shimmer of Canada's largest chandelier installation of its kind.





## TAILOR MADE.

Dress for success with thoughtful design considerations, like wood-grain laminate wardrobe enclosures, built-in closet organizers and smart storage features. All ideally suited to care for your finest apparel.





# HAUTE CUISINE.

The impeccable taste of elegant Calacatta porcelain backsplashes, chrome Grohe faucets and wood-grain laminate cabinetry with drawer organizers and recessed lighting is complemented by world-renowned Miele appliances, including precision gas cooktops.



**Miele** The Miele Promise of Forever Better.

Miele was founded in Germany, over 115 years ago by Carl Miele and Reinhard Zinkann, and it has always been a family-owned, family-run company. Miele continues to be a German-made company with ninety percent of its product's value generation created in Germany. Stemming from the words of its founding fathers, "Success is only possible in the long term if one is totally and utterly convinced of the quality of one's products," continuous innovation is at the heart of the Miele ethos. The sentiment is also captured in Miele family's deep-felt vision of Immer Besser, or, Forever Better, which commits the family-run business to the positions of industry leadership and innovation. Miele's elegant design integrates seamlessly with the King's Landing kitchen systems and offers residents the ultimate kitchen technology that lets the home chef showcase their skills or catering staff prepare a meal to remember.







## LUXE RELAXATION.

Indulge in soothing beauty and functionality, with polished chrome fixtures, Calacatta porcelain tile tub and shower surround, custom drawer organizers and beautifully soft lighting.

**KOHLER.**

**GROHE**





## INNOVATIVE BENCHMARK.

Concord is renowned for innovative, green energy infrastructure in North America. Amongst the leading technologies built in, King's Landing residents enjoy the precision and efficiency of smart thermostats.



## GREEN PHILOSOPHY.

Concord recognizes that transportation and temperature control are the largest energy draw in our communities. Our focus is to design green communities of scale and infrastructure that reduce energy usage while at the same time supporting the green energy grid. High-density master-planned communities connected to cities and mass transit greatly reduce transit congestion and carbon. Elevators and walkability replace thousands of single vehicle trips a day in our communities. High-rise buildings with hundreds of homes share walls managing heating and cooling far more efficiently than single-family home communities.

Concord takes this philosophy further in its future communities by:

- Supplying smart learning temperature control in our homes
- Pioneering in residential EV parking infrastructure, setting new benchmarks in North America
- Building and developing Concord Green Energy power projects that offset the energy usage of our buildings many times over

**CONCORD**  
green energy





CONCORDKINGSLANDING.COM

**CONCORD**  
Canada's Largest Community Builder