

The Easton 34



Please confirm with our Sales Team which elevations are available in your desired community. All elevations, floor plans and dimensions are for illustrative purposes only and are intended to convey a concept and visualization of our homes. They are subject to modifications at any time and are not to be used for contractual purposes. Square footage noted reflects Residential Measurement Standard.



crystalcreekhomes.ca



The Easton 34

CRAFSTMAN 3058 SQ FT

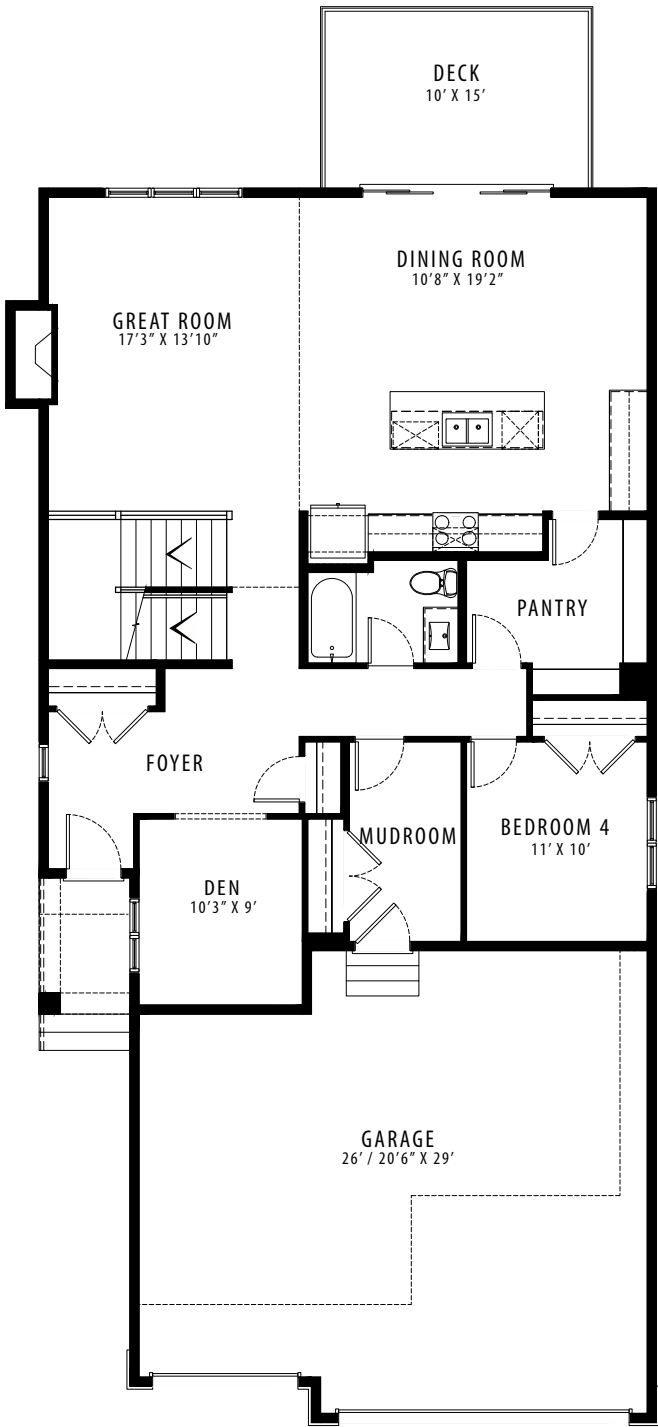
4 BEDROOMS | 3 BATHROOMS | 3 CAR GARAGE

crystalcreekhomes.ca

The Easton 34

CRAFTSMAN

3058 SQ FT



MAIN FLOOR | 1443 SQ FT



UPPER FLOOR | 1615 SQ FT

The Everett 28

AVAILABLE ELEVATIONS



FRONT ELEVATION PRAIRIE



FRONT ELEVATION CRAFTSMAN

Please confirm with our Sales Team which elevations are available in your desired community. All elevations, floor plans and dimensions are for illustrative purposes only and are intended to convey a concept and visualization of our homes. They are subject to modifications at any time and are not to be used for contractual purposes. Square footage noted reflects Residential Measurement Standard.



crystalcreekhomes.ca



The Everett 28

MODERN FARMHOUSE 2484 SQ FT

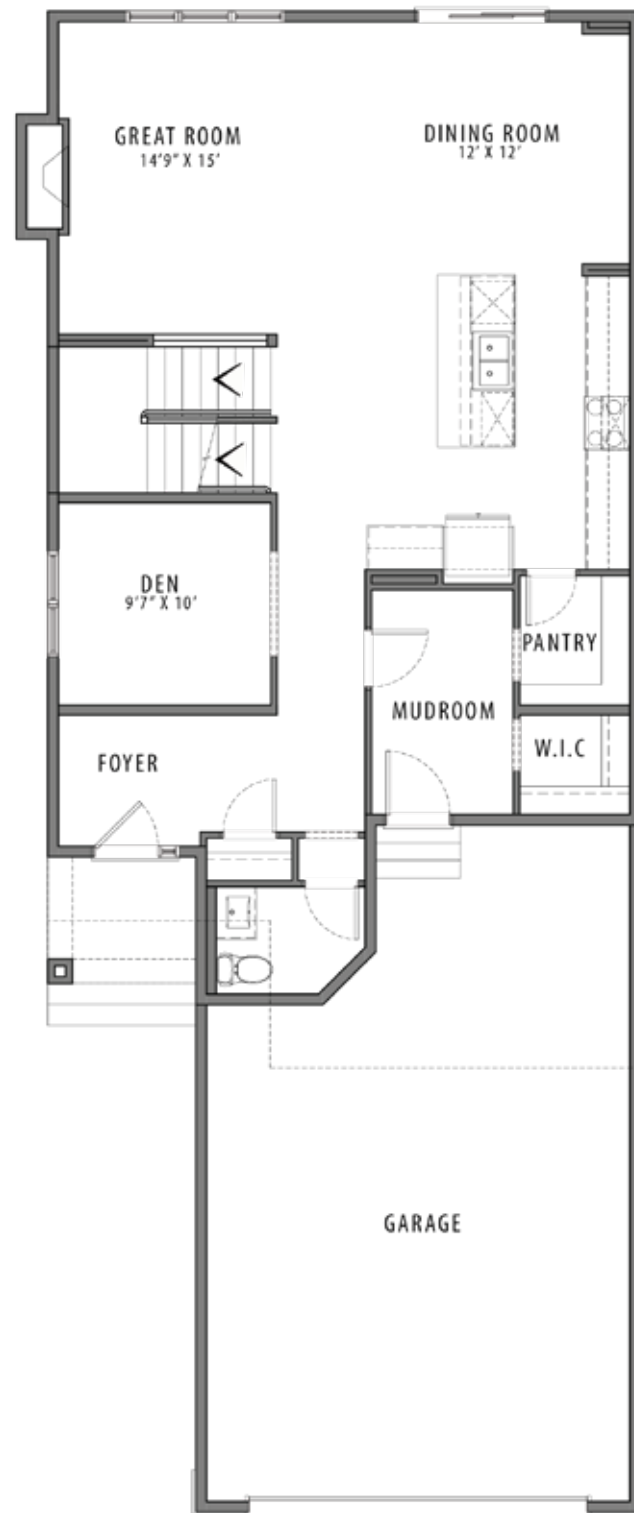
3 BEDROOMS | 2.5 BATHROOMS | 3 CAR TANDEM GARAGE

crystalcreekhomes.ca

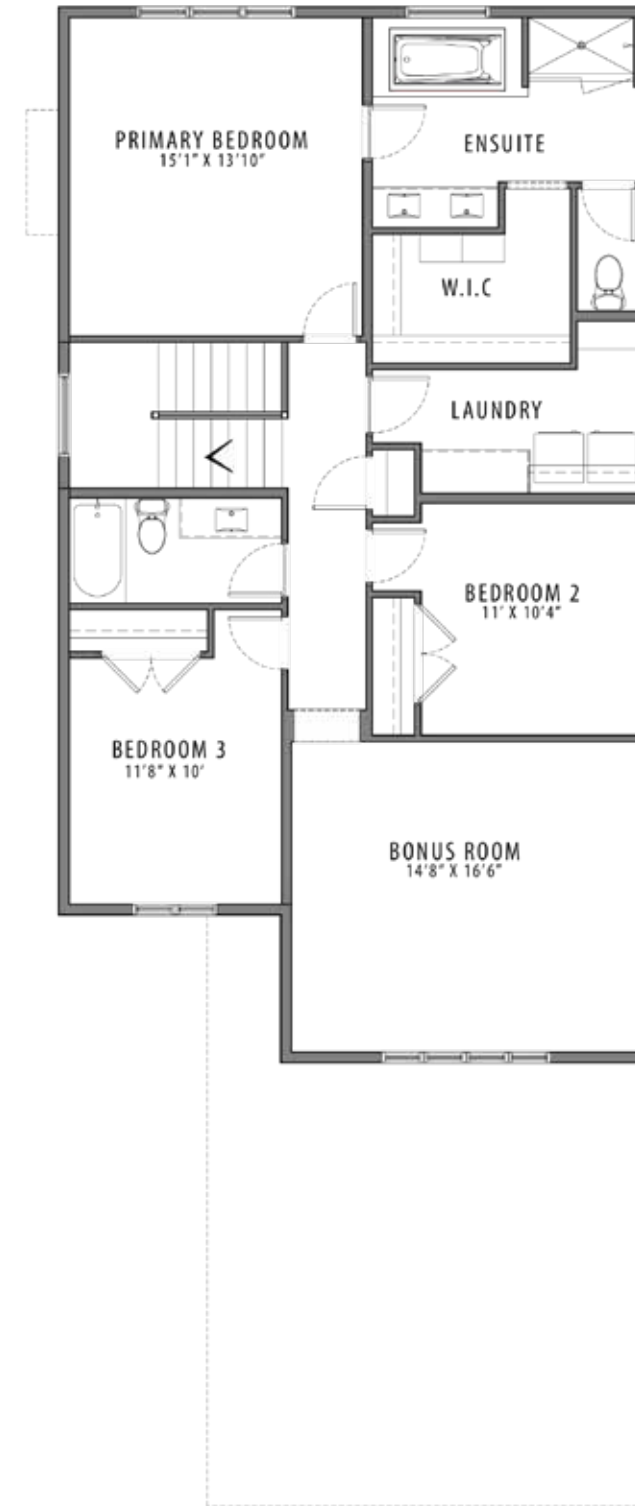
The Everett 28

MODERN FARMHOUSE

2484 SQ FT



MAIN FLOOR | 1158 SQ FT



UPPER FLOOR | 1326 SQ FT

The Sawyer 32

AVAILABLE ELEVATIONS



FRONT ELEVATION **PRAIRIE**



FRONT ELEVATION **CRAFTSMAN**



FRONT ELEVATION **MODERN FARMHOUSE**

Please confirm with our Sales Team which elevations are available in your desired community. All elevations, floor plans and dimensions are for illustrative purposes only and are intended to convey a concept and visualization of our homes. They are subject to modifications at any time and are not to be used for contractual purposes. Square footage noted reflects Residential Measurement Standard.



crystalcreekhomes.ca



The Sawyer 32

CRAFTSMAN

1657 SQ FT

2 BEDROOMS | 2 BATHROOMS | 2 CAR GARAGE

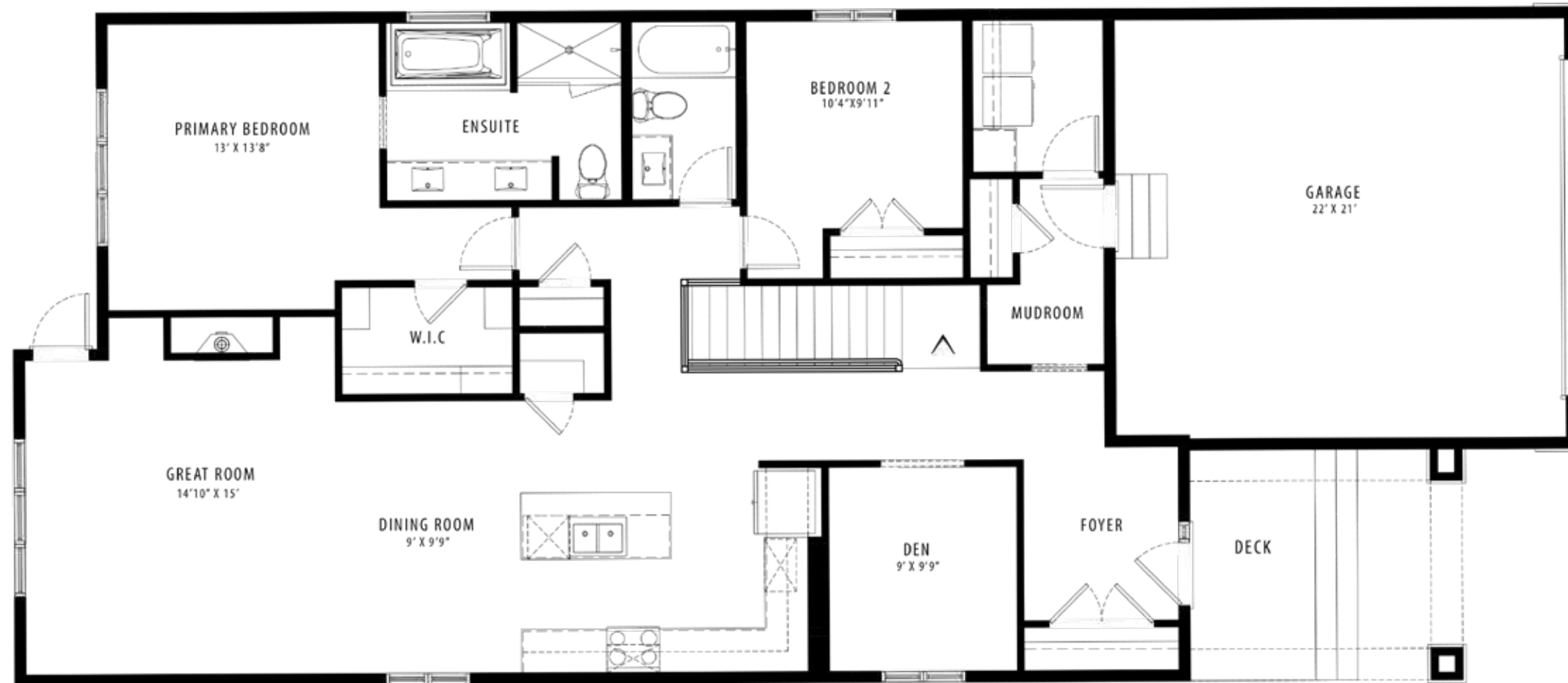


crystalcreekhomes.ca

The Sawyer 32

CRAFTSMAN

1657 SQ FT



MAIN FLOOR | 1657 SQ FT

The Mason 34



Please confirm with our Sales Team which elevations are available in your desired community. All elevations, floor plans and dimensions are for illustrative purposes only and are intended to convey a concept and visualization of our homes. They are subject to modifications at any time and are not to be used for contractual purposes. Square footage noted reflects Residential Measurement Standard.



crystalcreekhomes.ca



The Mason 34

MODERN FARMHOUSE 2863 SQ FT

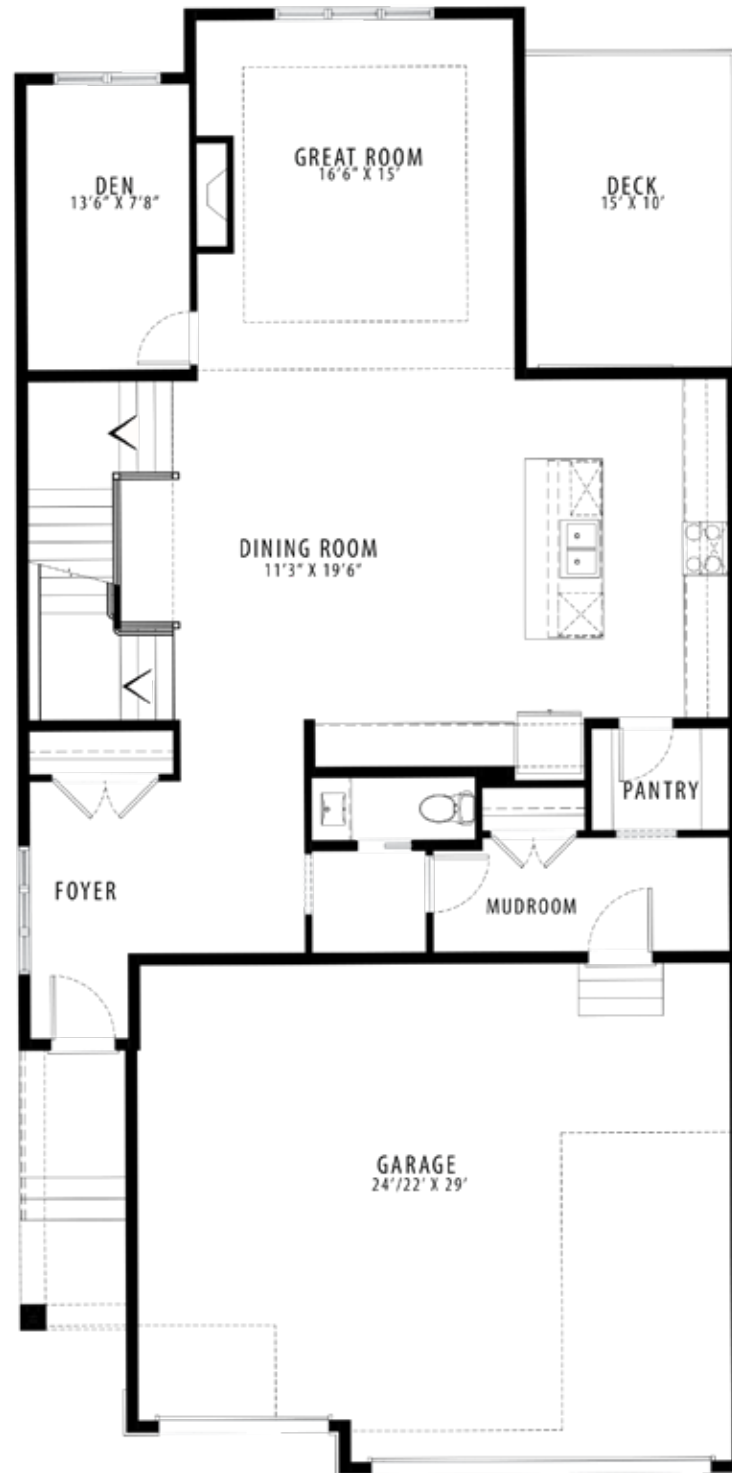
3 BEDROOMS | 2.5 BATHROOMS | 3 CAR GARAGE

crystalcreekhomes.ca

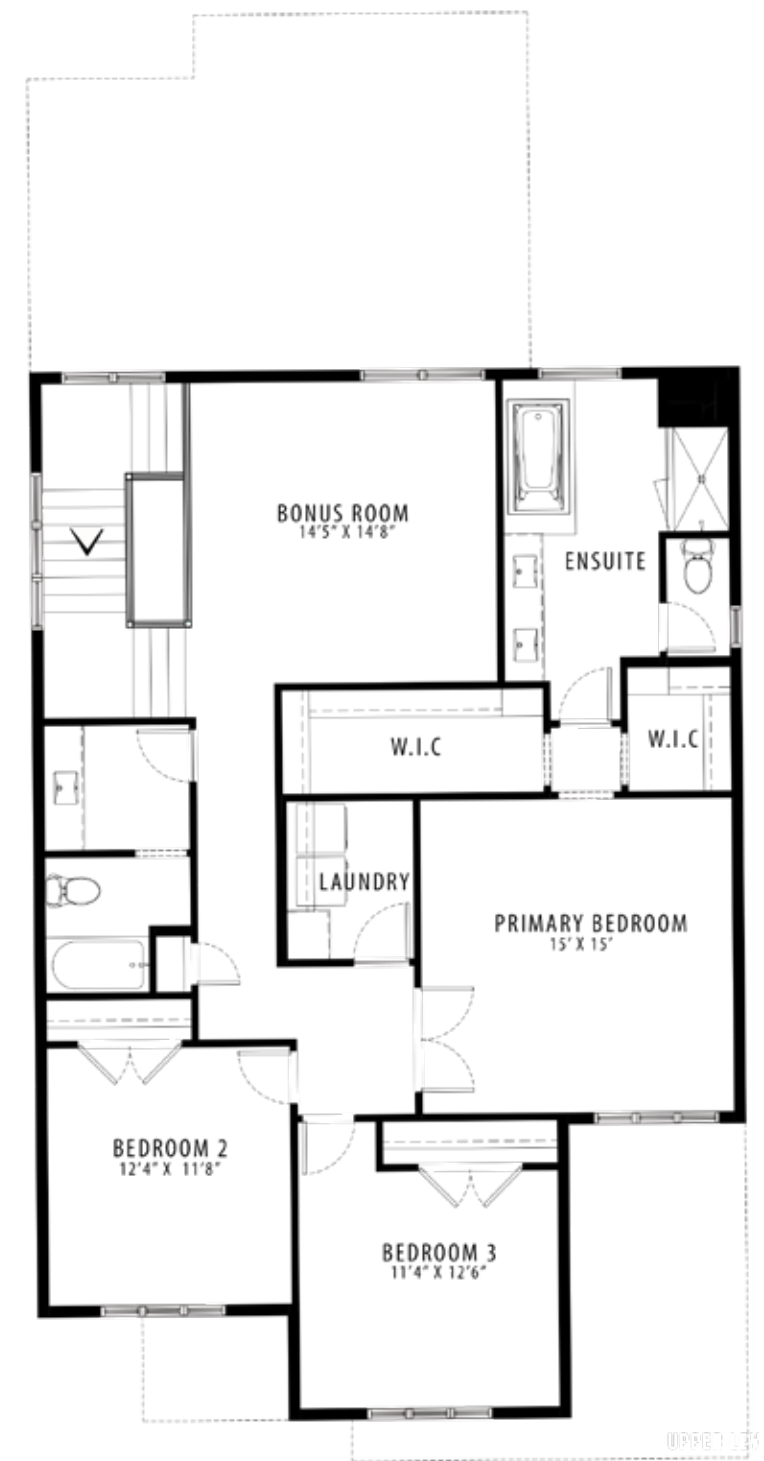
The Mason 34

MODERN FARMHOUSE

2863 SQ FT



MAIN FLOOR | 1359 SQ FT



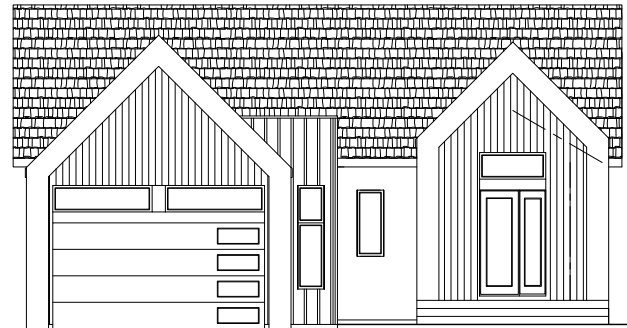
UPPER FLOOR | 1504 SQ FT

The Dorchester 44

AVAILABLE ELEVATIONS



FRONT ELEVATION **PRAIRIE**



FRONT ELEVATION **SCANDINAVIAN**



FRONT ELEVATION **MODERN FARMHOUSE**

Please confirm with our Sales Team which elevations are available in your desired community. All elevations, floor plans and dimensions are for illustrative purposes only and are intended to convey a concept and visualization of our homes. They are subject to modifications at any time and are not to be used for contractual purposes. Square footage noted reflects Residential Measurement Standard.



crystalcreekhomes.ca



The Dorchester 44

CRAFTSMAN

1958 SQ FT

2 BEDROOMS | 2 BATHROOMS | 2 CAR GARAGE – FRONT DRIVE

crystalcreekhomes.ca

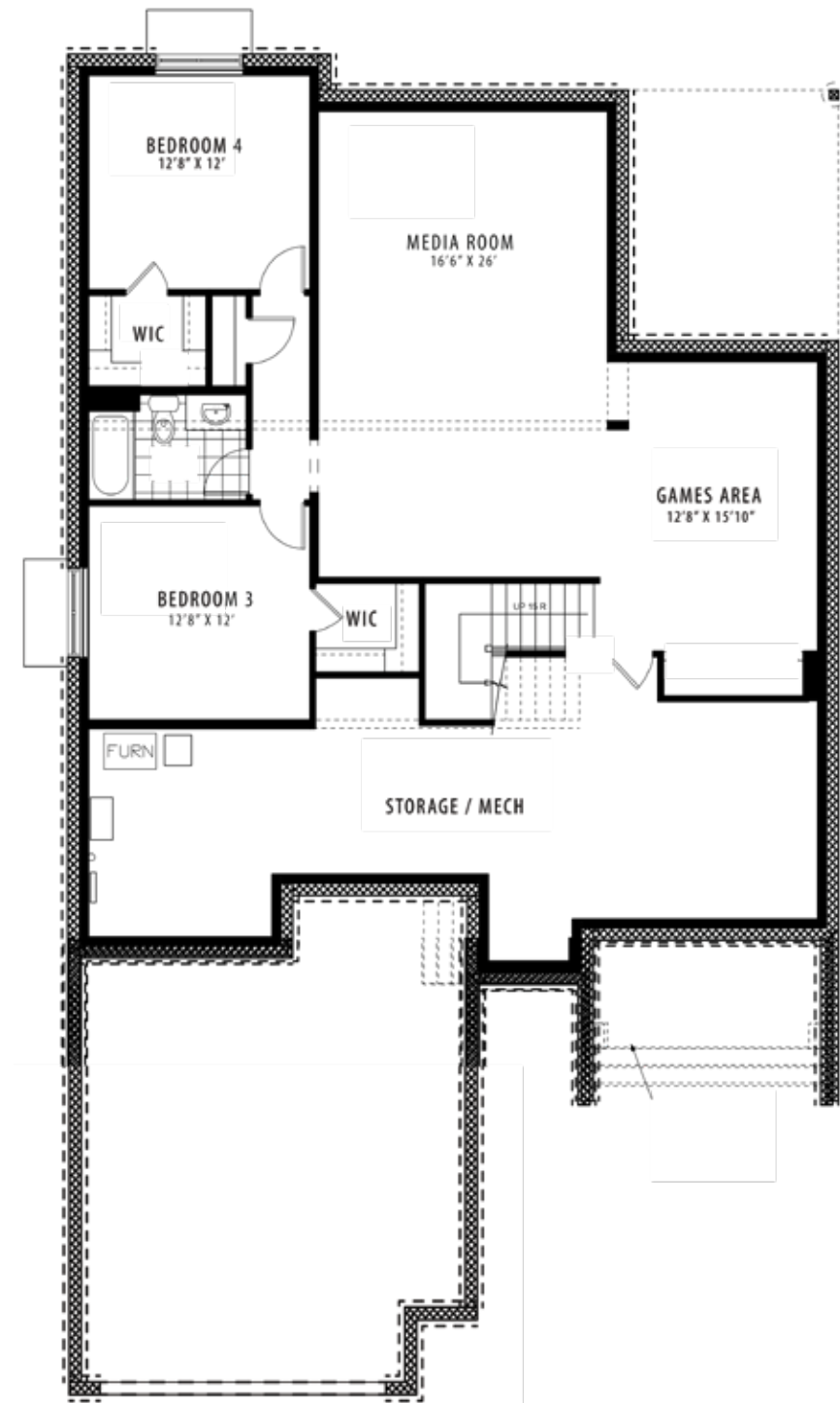
The Dorchester 44

CRAFTSMAN

1958 SQ FT



MAIN FLOOR | 1958 SQ FT



OPTIONAL LOWER FLOOR | 1226 SQ FT

The Rockwell 30

AVAILABLE ELEVATIONS



FRONT ELEVATION **MODERN PRAIRIE**



FRONT ELEVATION **CRAFTSMAN**



FRONT ELEVATION **PRAIRIE**

Please confirm with our Sales Team which elevations are available in your desired community. All elevations, floor plans and dimensions are for illustrative purposes only and are intended to convey a concept and visualization of our homes. They are subject to modifications at any time and are not to be used for contractual purposes. Square footage noted reflects Residential Measurement Standard.



crystalcreekhomes.ca



The Rockwell 30

PRAIRIE **2595** SQ FT

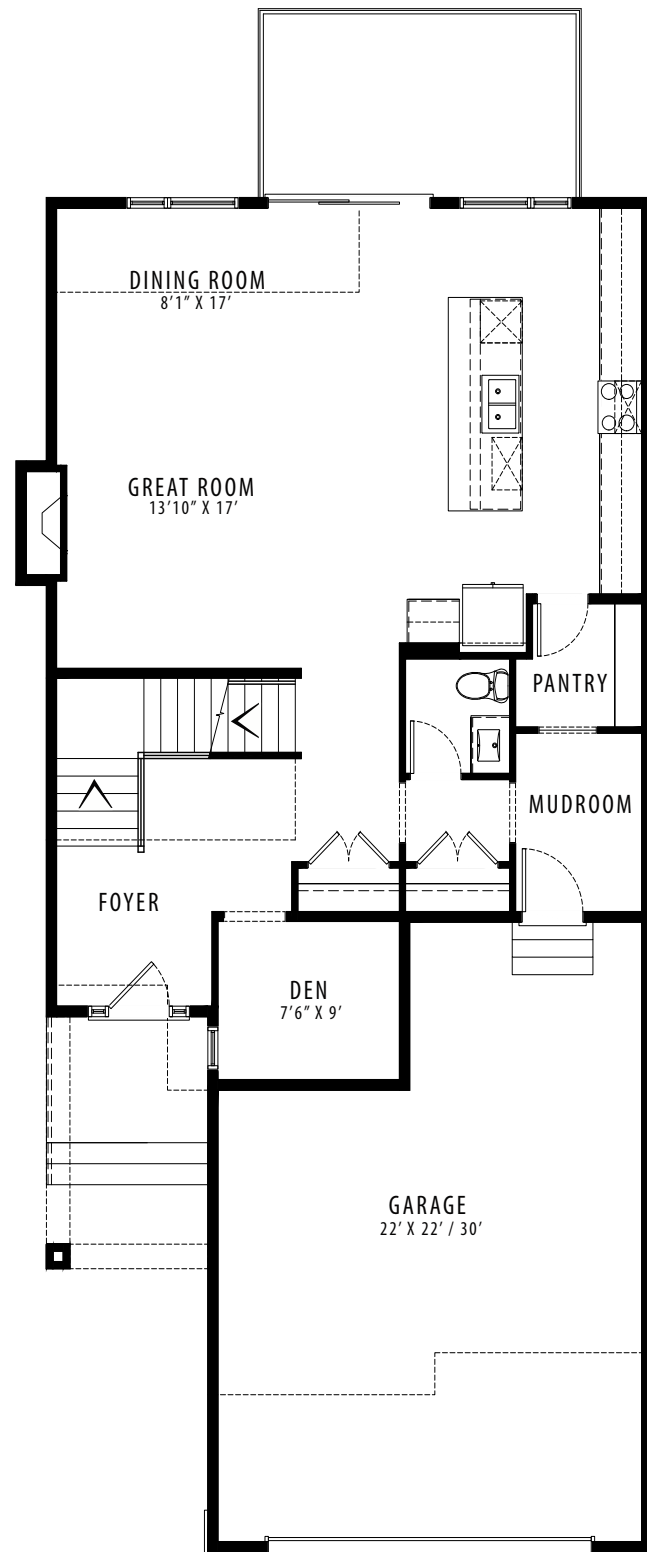
3 BEDROOMS | 2.5 BATHROOMS | 2 CAR TANDEM GARAGE

crystalcreekhomes.ca

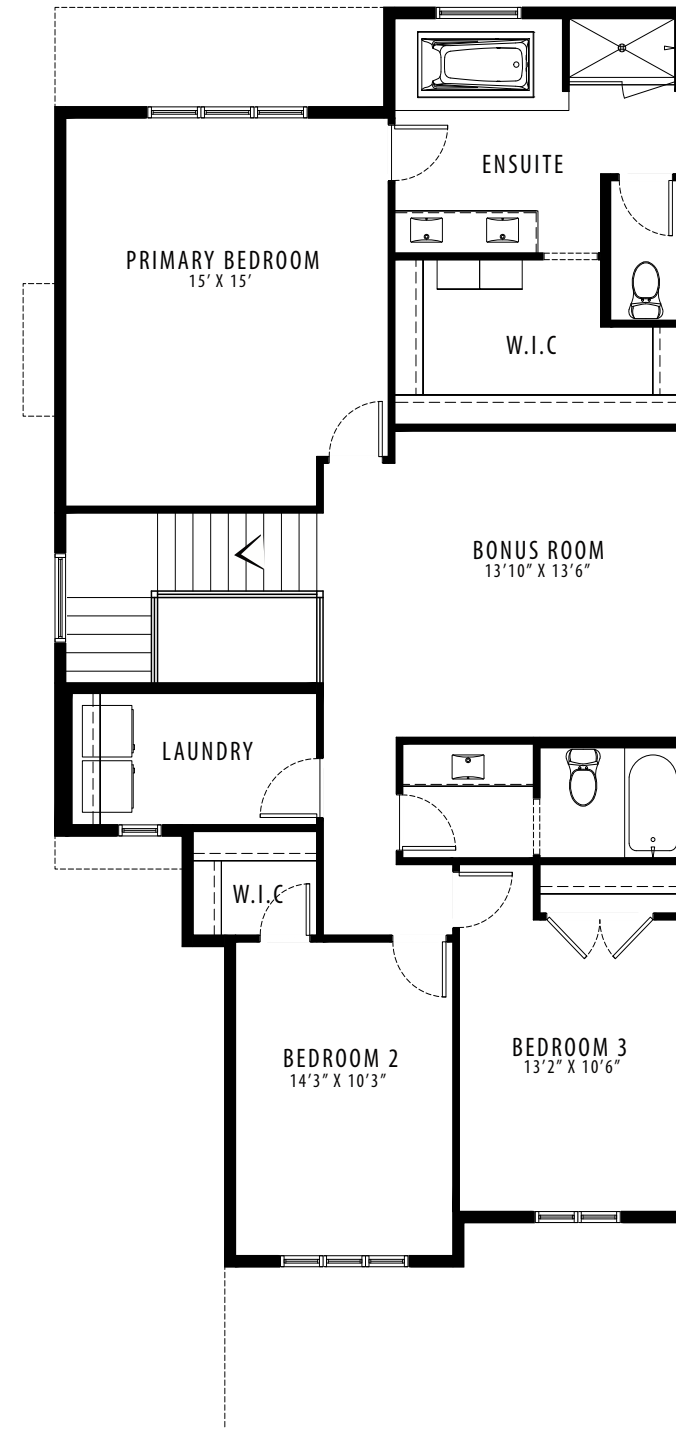
The Rockwell 30

PRAIRIE

2595 SQ FT



MAIN FLOOR | 1151 SQ FT



UPPER FLOOR | 1444 SQ FT

The Devonshire 36



Please confirm with our Sales Team which elevations are available in your desired community. All elevations, floor plans and dimensions are for illustrative purposes only and are intended to convey a concept and visualization of our homes. They are subject to modifications at any time and are not to be used for contractual purposes. Square footage noted reflects Residential Measurement Standard.



crystalcreekhomes.ca



The Devonshire 36

MODERN FARMHOUSE 2732 SQ FT

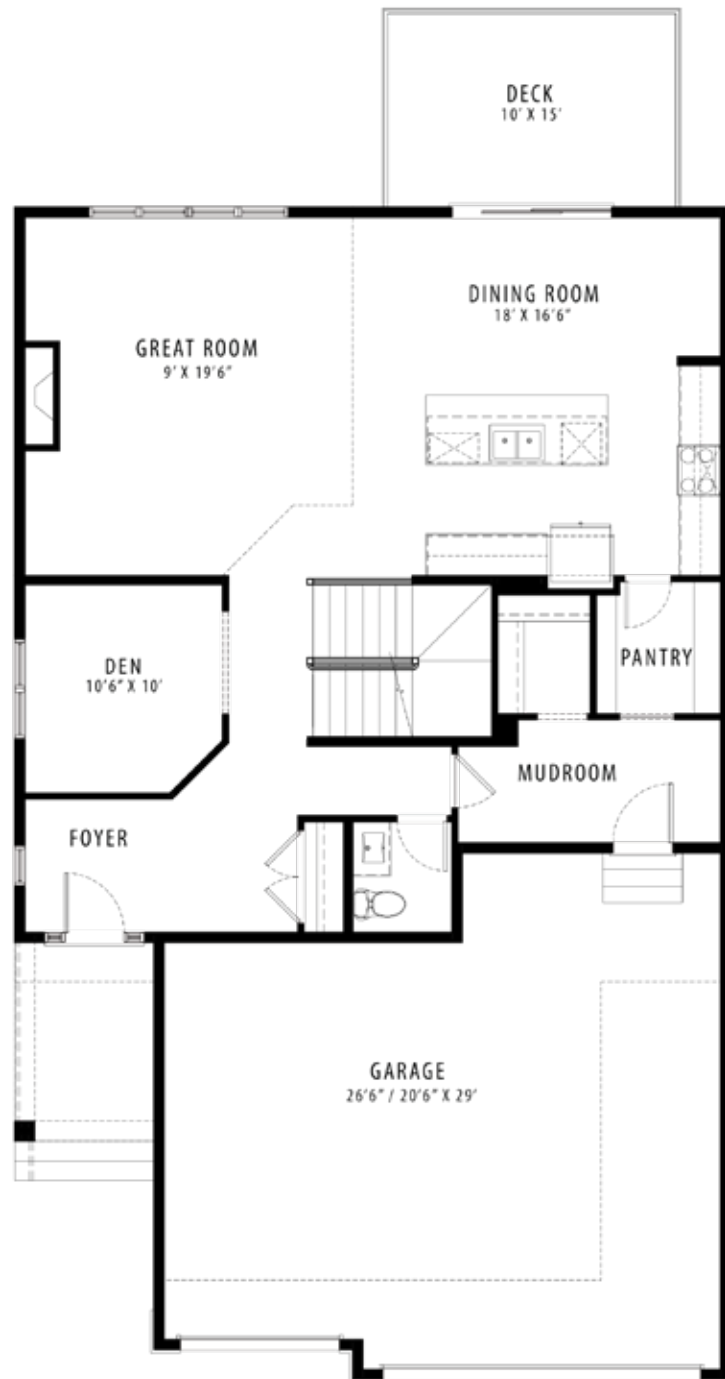
3 BEDROOMS | 2.5 BATHROOMS | 3 CAR GARAGE

crystalcreekhomes.ca

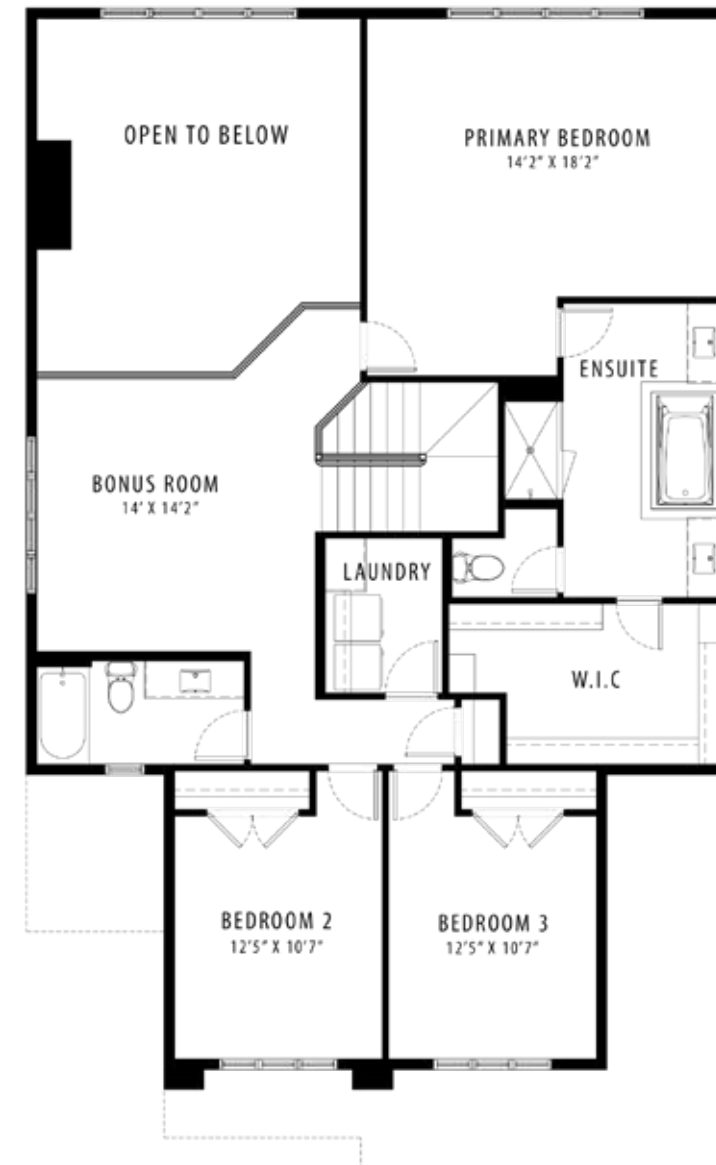
The Devonshire 36

MODERN FARMHOUSE

2732 SQ FT



MAIN FLOOR | 1271 SQ FT



UPPER FLOOR | 1461 SQ FT

The Berkshire 34



Please confirm with our Sales Team which elevations are available in your desired community. All elevations, floor plans and dimensions are for illustrative purposes only and are intended to convey a concept and visualization of our homes. They are subject to modifications at any time and are not to be used for contractual purposes. Square footage noted reflects Residential Measurement Standard.



crystalcreekhomes.ca



The Berkshire 34

PRAIRIE 2744 SQ FT

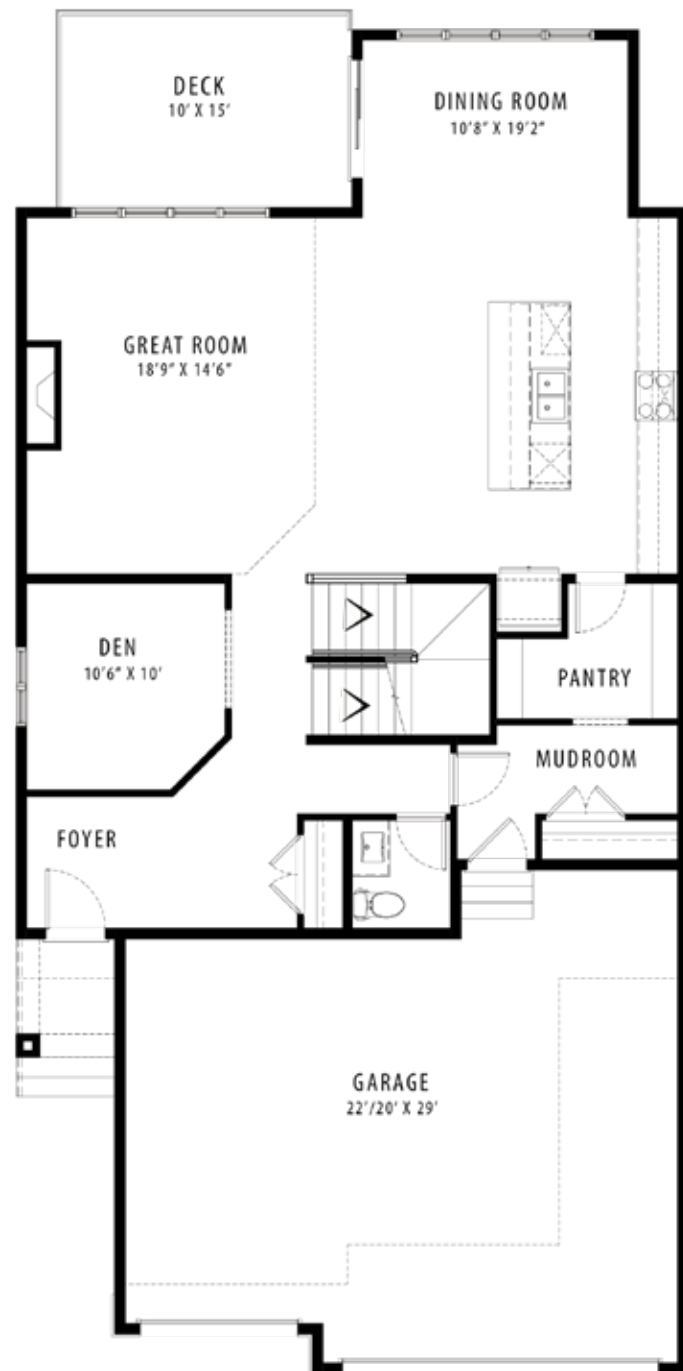
3 BEDROOMS | 2.5 BATHROOMS | 3 CAR GARAGE

crystalcreekhomes.ca

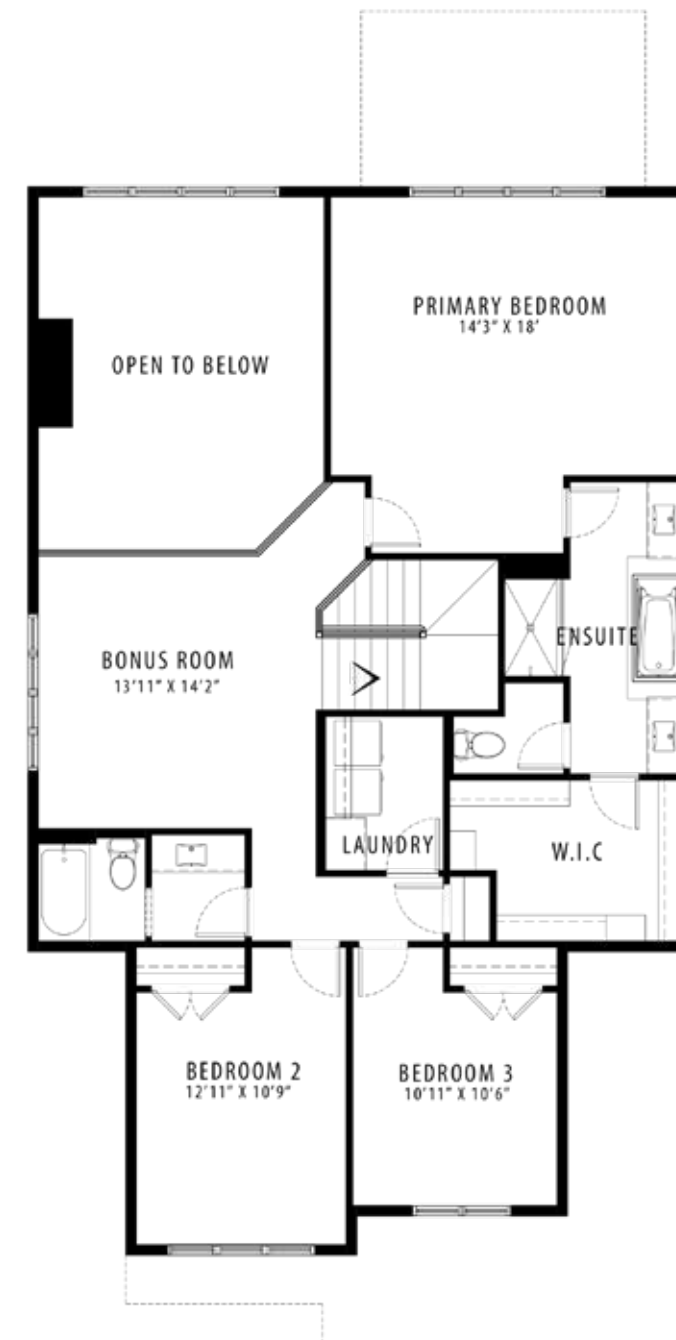
The Berkshire 34

MODERN FARMHOUSE

2744 SQ FT



MAIN FLOOR | 1348 SQ FT



UPPER FLOOR | 1396 SQ FT

The Sheffield 34



Please confirm with our Sales Team which elevations are available in your desired community. All elevations, floor plans and dimensions are for illustrative purposes only and are intended to convey a concept and visualization of our homes. They are subject to modifications at any time and are not to be used for contractual purposes. Square footage noted reflects Residential Measurement Standard.



crystalcreekhomes.ca



The Sheffield 34

PRAIRIE 2775 SQ FT

3 BEDROOMS | 2.5 BATHROOMS | 2 CAR TANDEM GARAGE

crystalcreekhomes.ca

The Sheffield 34

CRAFTSMAN

2775 SQ FT



MAIN FLOOR | 1300 SQ FT



UPPER FLOOR | 1475 SQ FT

The Grayson 38



Please confirm with our Sales Team which elevations are available in your desired community. All elevations, floor plans and dimensions are for illustrative purposes only and are intended to convey a concept and visualization of our homes. They are subject to modifications at any time and are not to be used for contractual purposes. Square footage noted reflects Residential Measurement Standard.



crystalcreekhomes.ca



The Grayson 38

MODERN PRAIRIE

2910 SQ FT

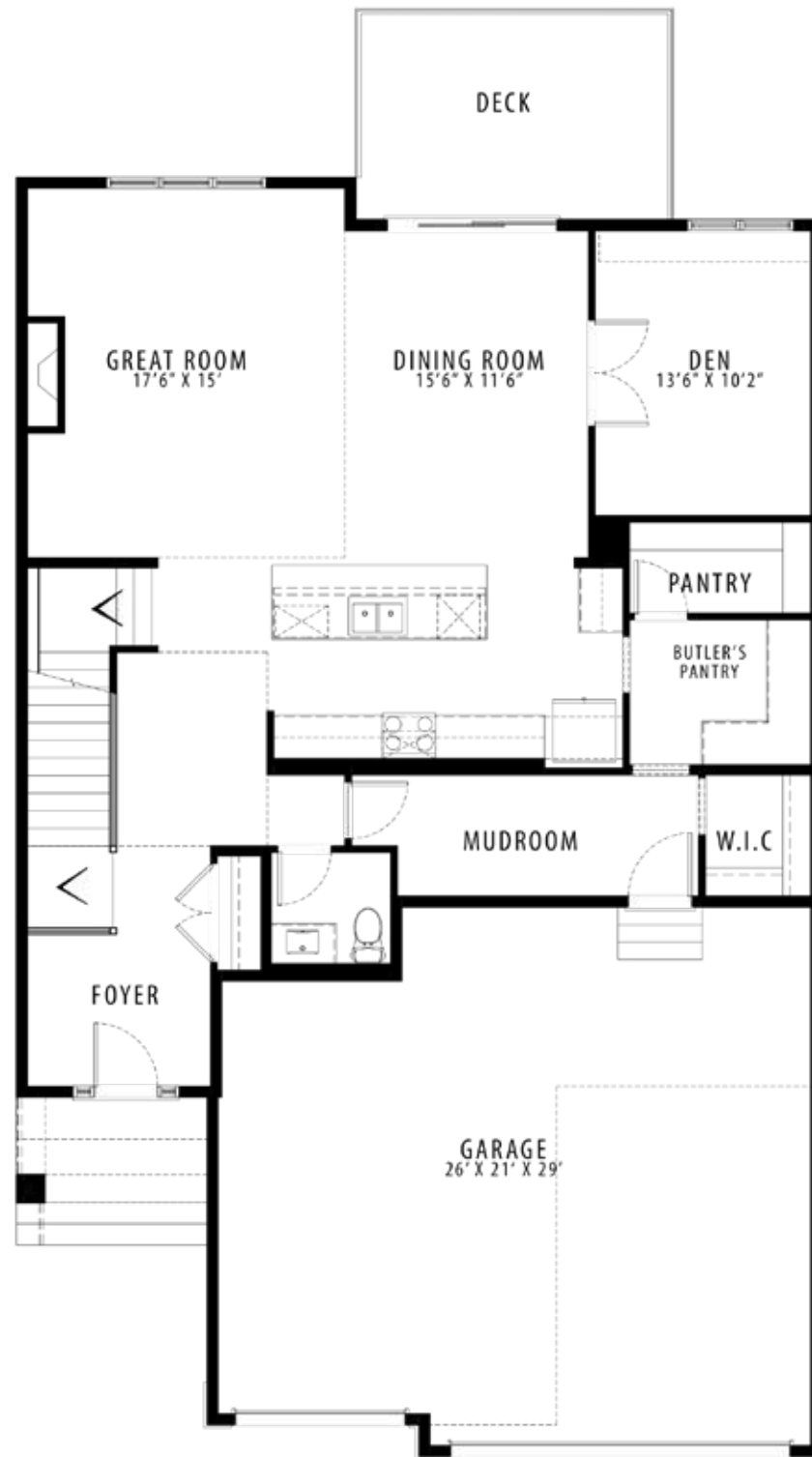
3 BEDROOMS | 2.5 BATHROOMS | 2 CAR GARAGE

crystalcreekhomes.ca

The Grayson 38

MODERN PRAIRIE

2910 SQ FT



MAIN FLOOR | 1384 SQ FT



UPPER FLOOR | 1526 SQ FT

The Sheffield 44

AVAILABLE ELEVATIONS



FRONT ELEVATION

PRAIRIE



FRONT ELEVATION

CRAFTSMAN



FRONT ELEVATION

MODERN FARMHOUSE

Please confirm with our Sales Team which elevations are available in your desired community. All elevations, floorplans and dimensions are for illustrative purposes only and are intended to convey a concept and visualization of our homes. They are subject to modifications at any time and are not to be used for contractual purposes. Square footage noted reflects Residential Measurement Standard.



crystalcreekhomes.ca



The Sheffield 44

PRAIRIE

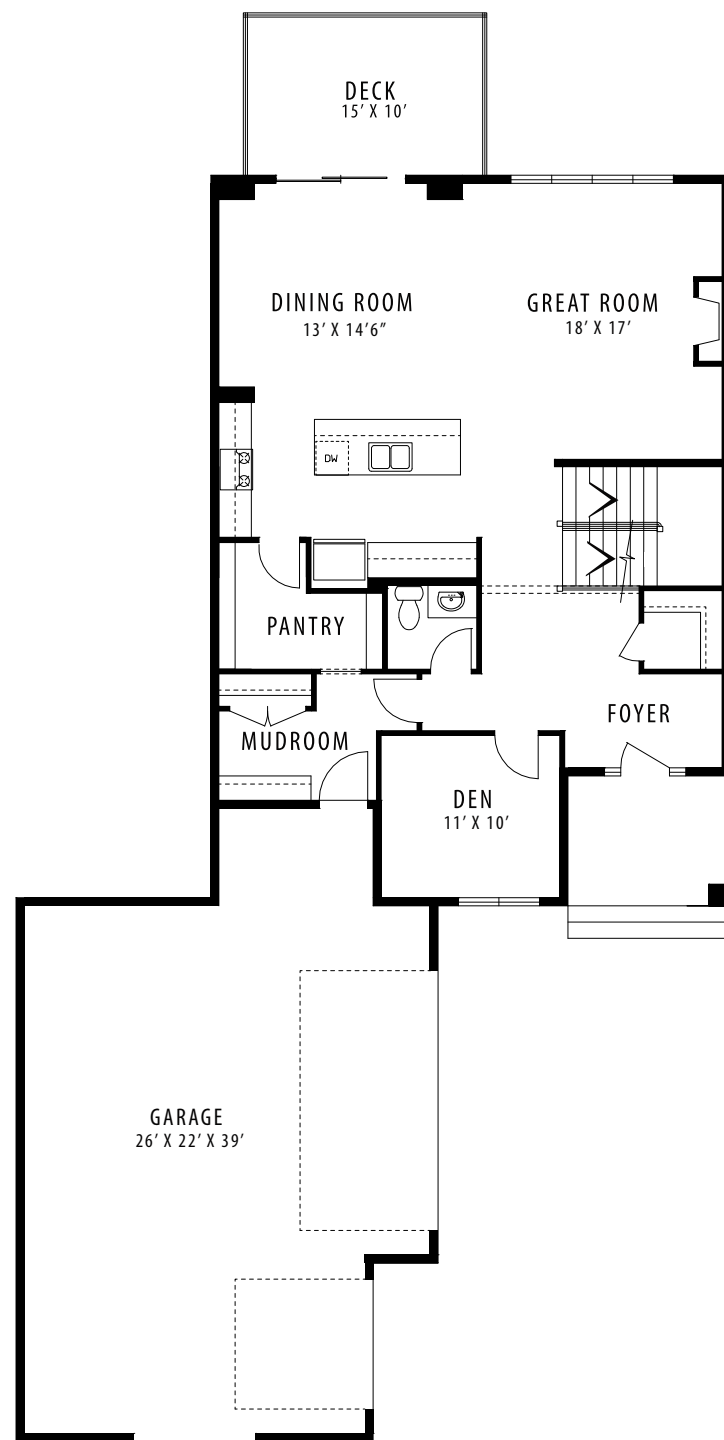
2809 SQ FT

3 BEDROOMS | 2.5 BATHROOMS | 3 CAR GARAGE

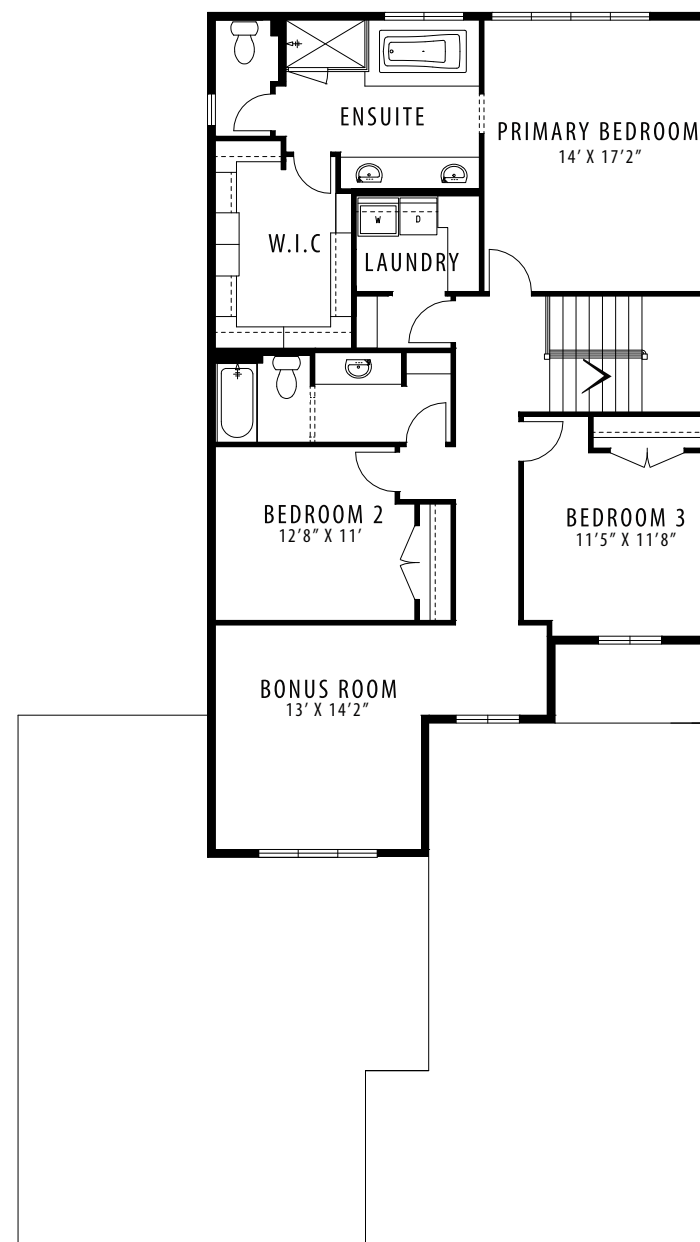
crystalcreekhomes.ca

The Sheffield 44

PRAIRIE 2809 SQ FT



MAIN FLOOR | 1300 SQ FT



UPPER FLOOR | 1509 SQ FT

The Somerton 38



Please confirm with our Sales Team which elevations are available in your desired community. All elevations, floor plans and dimensions are for illustrative purposes only and are intended to convey a concept and visualization of our homes. They are subject to modifications at any time and are not to be used for contractual purposes. Square footage noted reflects Residential Measurement Standard.



crystalcreekhomes.ca



The Somerton 38

MODERN FARMHOUSE 3149 SQ FT

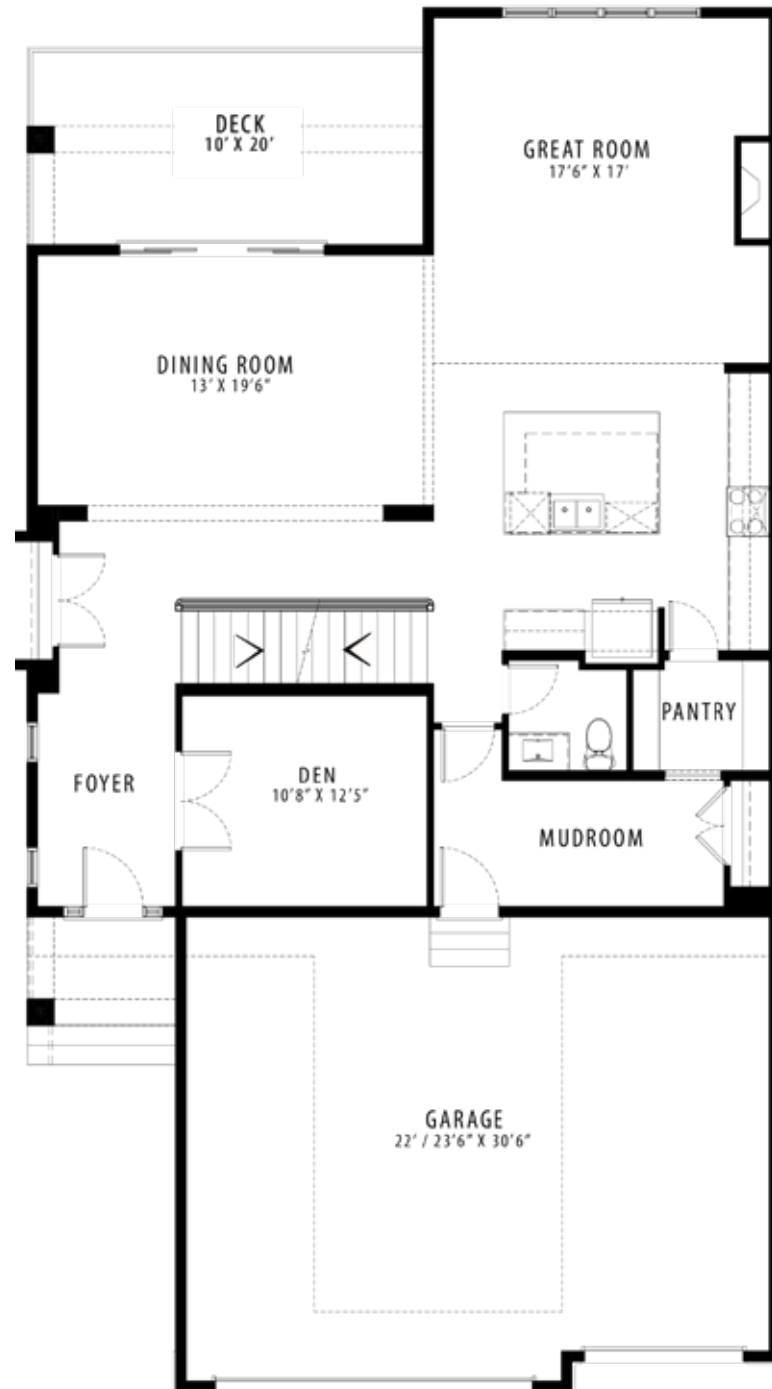
3 BEDROOMS | 2.5 BATHROOMS | 3 CAR GARAGE

crystalcreekhomes.ca

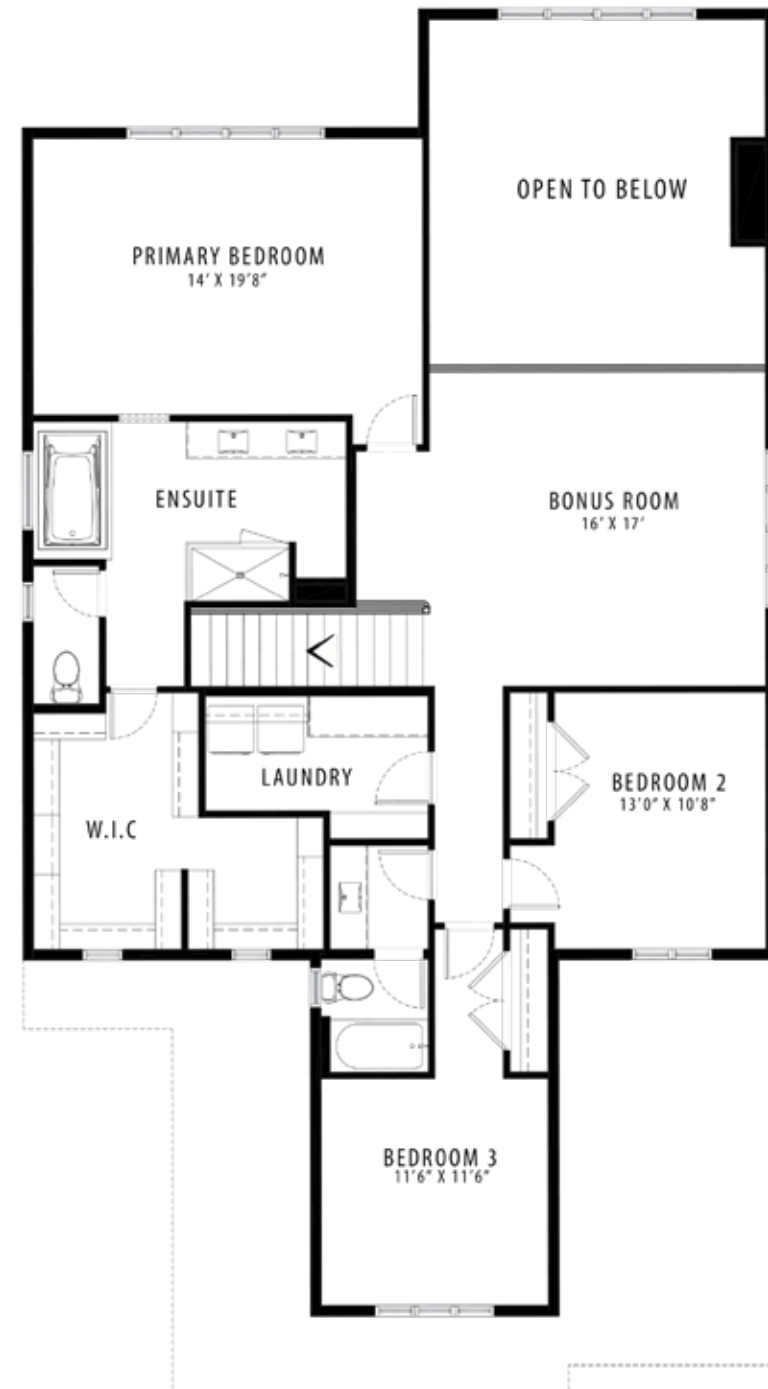
The Somerton 38

MODERN FARMHOUSE

3149 SQ FT



MAIN FLOOR | 1517 SQ FT



UPPER FLOOR | 1632 SQ FT

The Grayson 44



Please confirm with our Sales Team which elevations are available in your desired community. All elevations, floorplans and dimensions are for illustrative purposes only and are intended to convey a concept and visualization of our homes. They are subject to modifications at any time and are not to be used for contractual purposes. Square footage noted reflects Residential Measurement Standard.



crystalcreekhomes.ca



The Grayson 44

CRAFTSMAN

3015 SQ FT

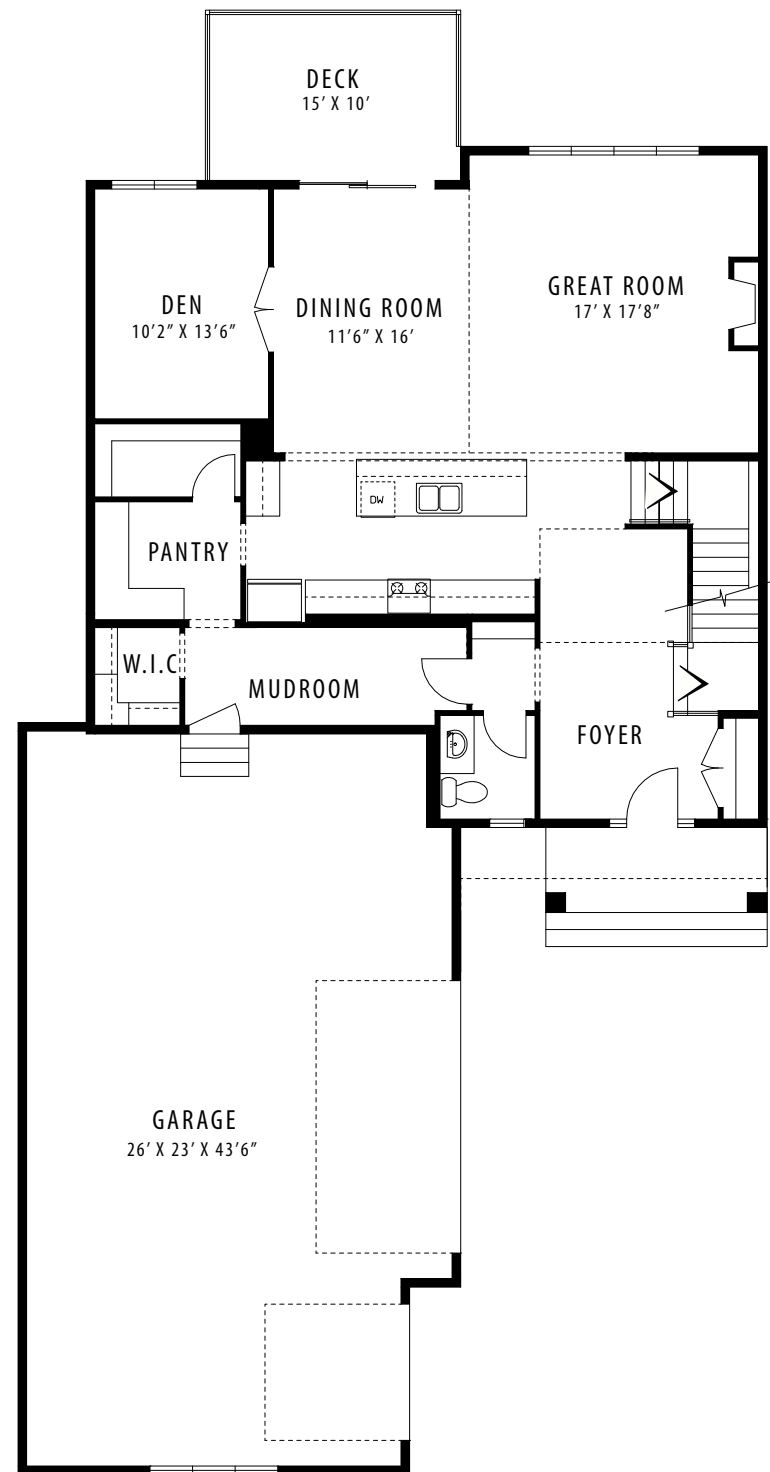
3 BEDROOMS | 2.5 BATHROOMS | 3 CAR GARAGE

crystalcreekhomes.ca

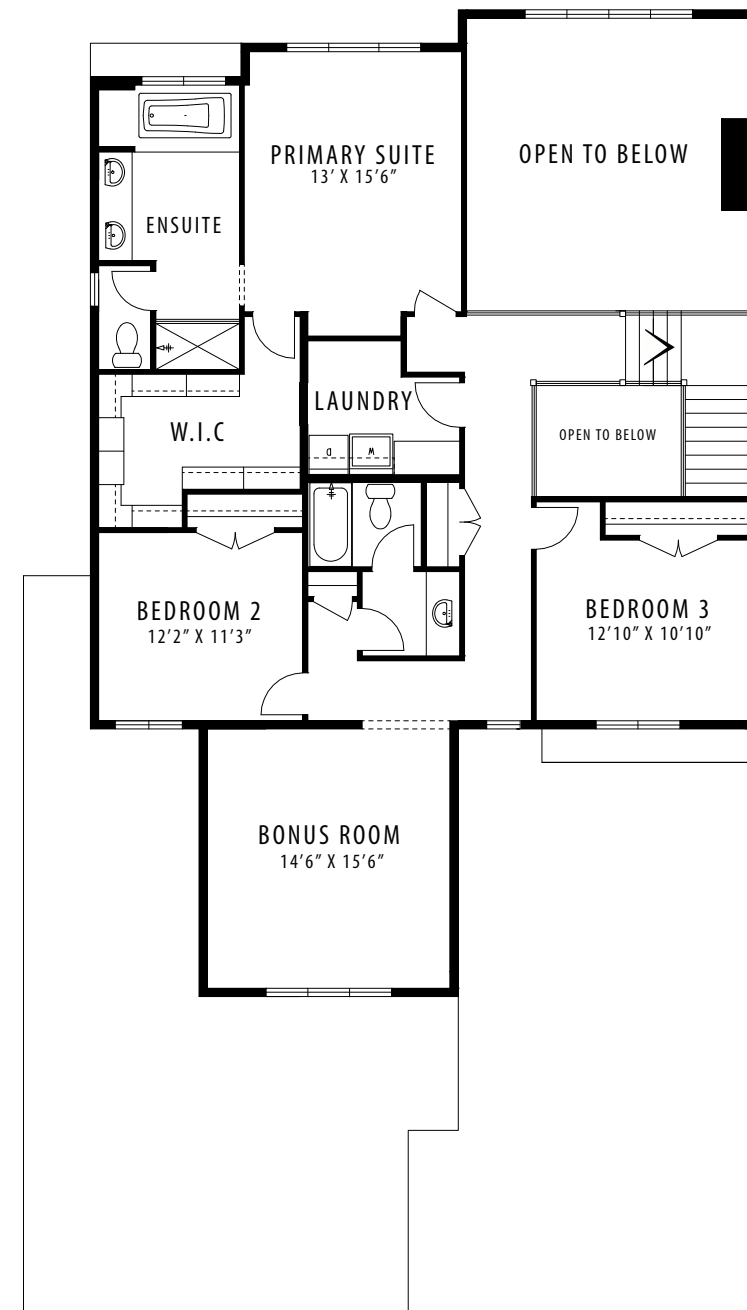
The Grayson 44

CRAFTSMAN

3015 SQ FT



MAIN FLOOR | 1466 SQ FT



UPPER FLOOR | 1549 SQ FT