



19 YEARS  
→→→→→ EST. 2004

[crystalcreekhomes.ca](http://crystalcreekhomes.ca)

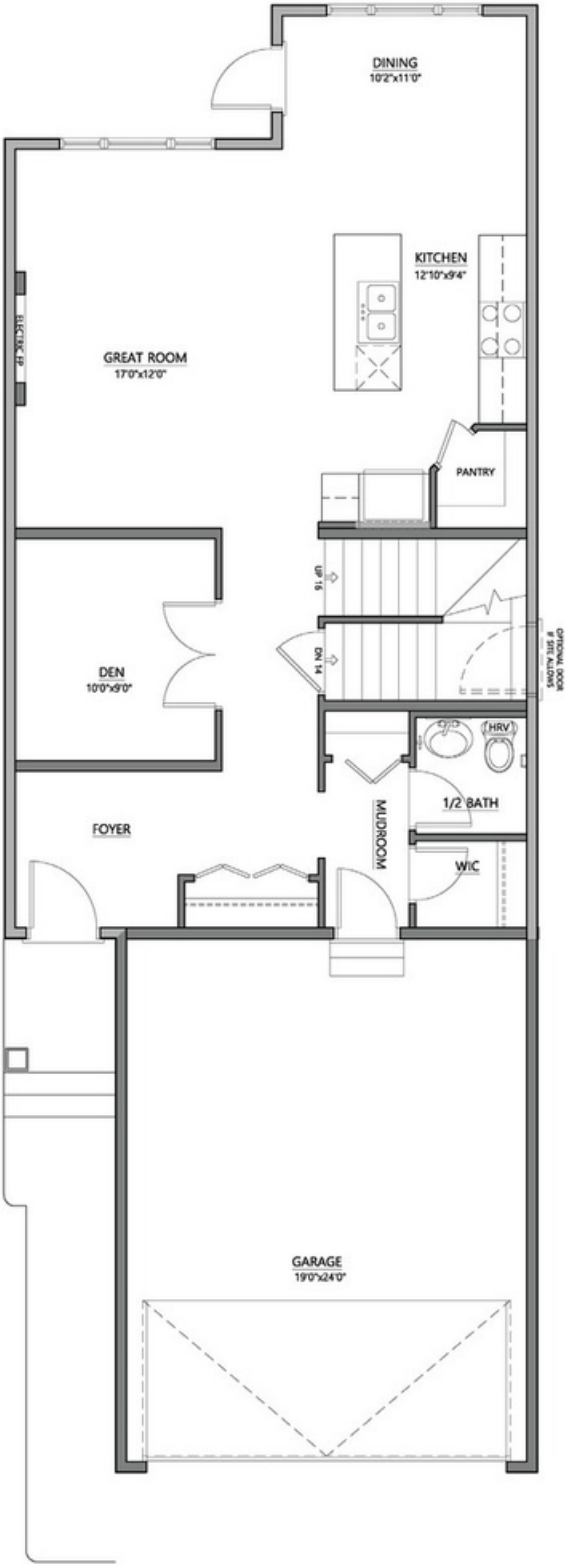


The Carson

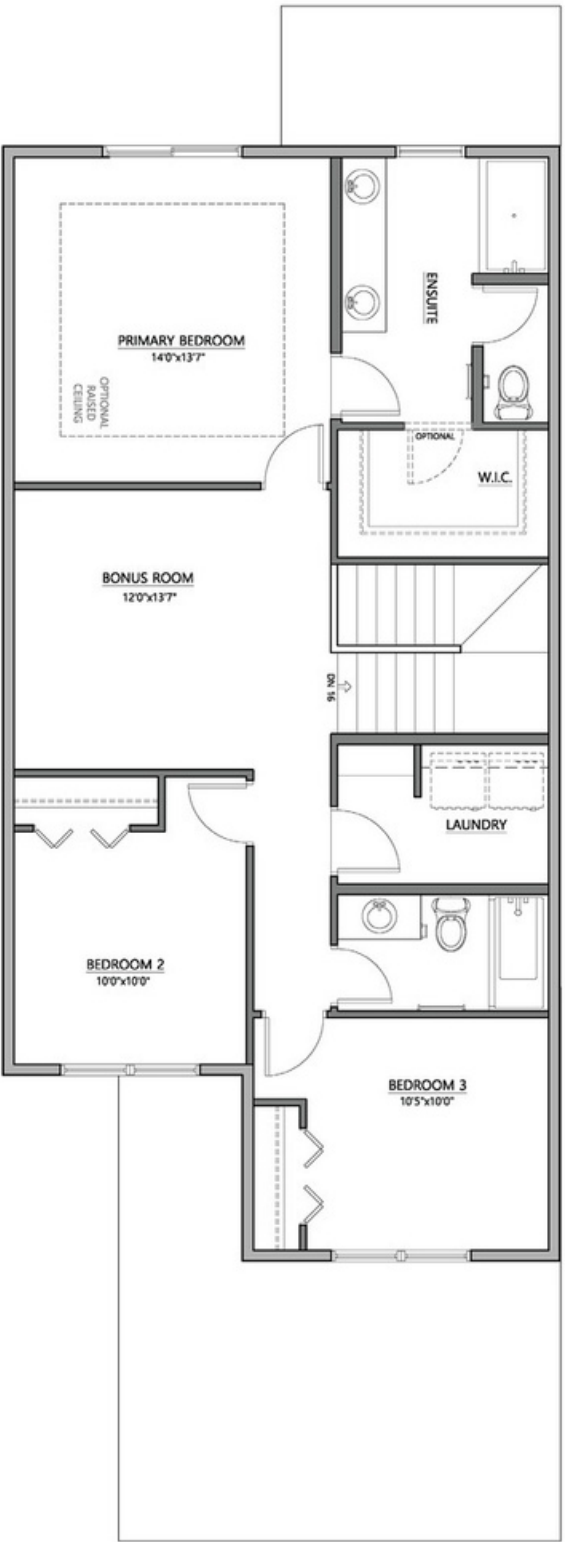
2.5 Bath  
3 Bed  
1936 sqft

# The Carson

1936 sqft



8'1" Main Floor | 936 sqft



8'1" Second Level | 1000 sqft

## Available Elevations:

• Please confirm with our Sales Team which elevations are available in your desired community. All elevations, floorplans and dimensions are for illustrative purposes only and are intended to convey a concept and visualization of our homes. They are subject to modifications at any time and are not to be used for contractual purposes. Square footage noted reflects Residential Measurement Standard.



Prairie



Modern Farmhouse



Contemporary





19 YEARS  
→ EST. 2004

[crystalcreekhomes.ca](http://crystalcreekhomes.ca)

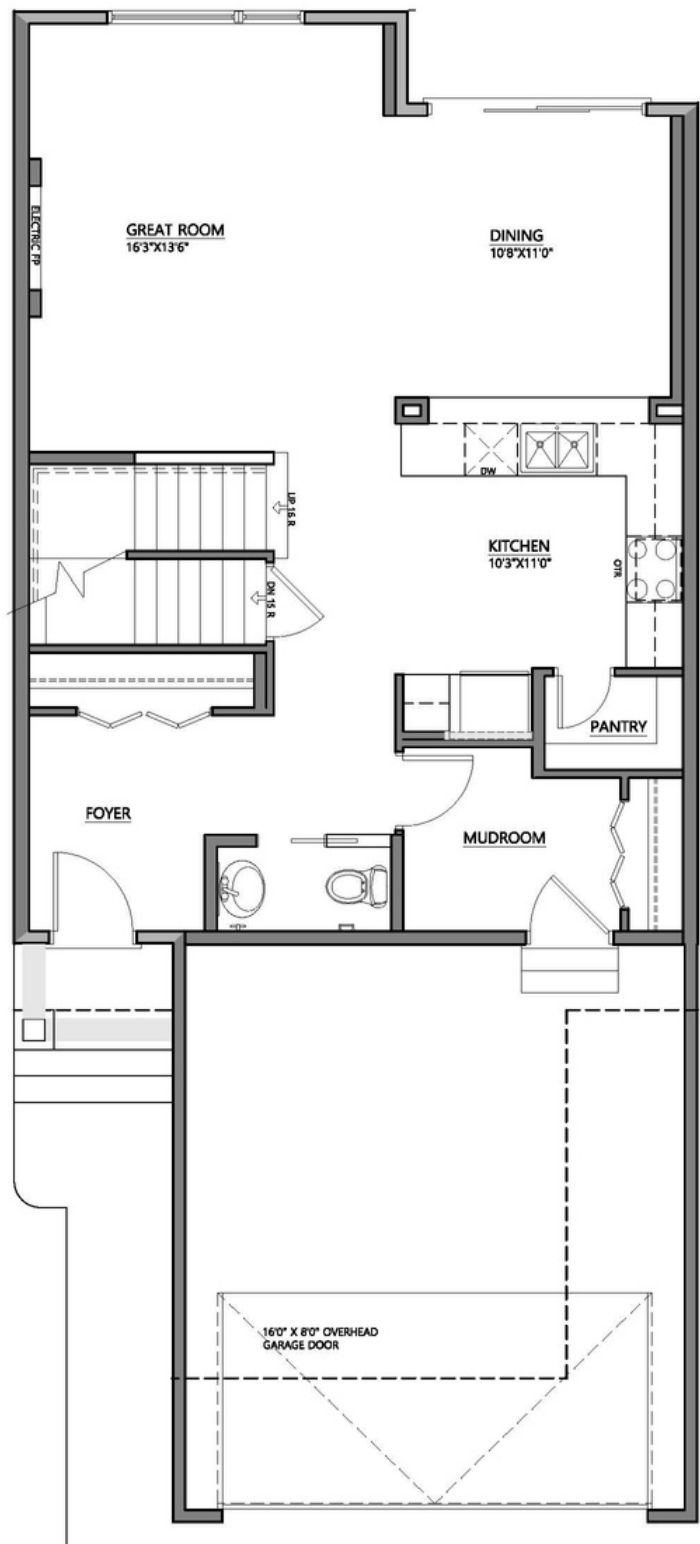


The Alder

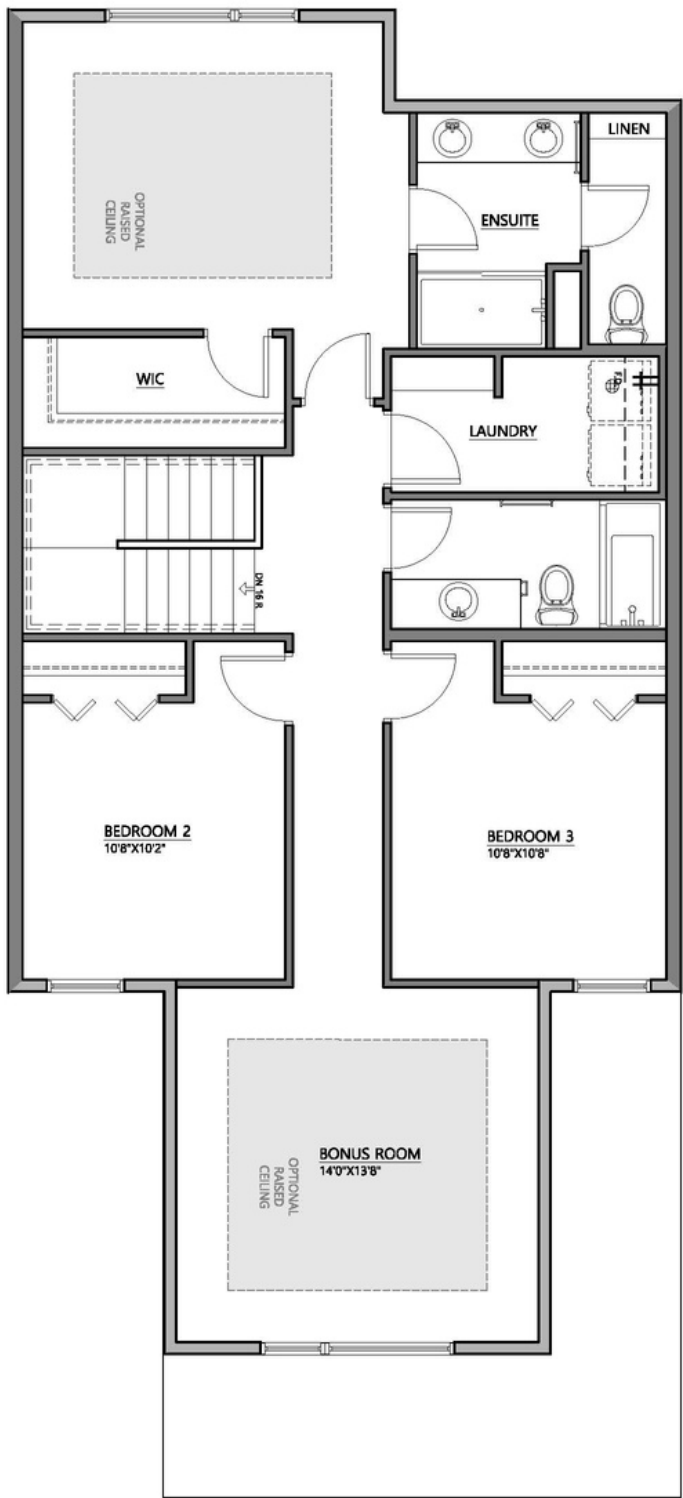
2.5 Bath  
3 Bed  
1980 sqft

# The Alder

1980 sqft



9'1" Main Floor | 885 sqft



8'1" Second Level | 1095 sqft

## Available Elevations:

• Please confirm with our Sales Team which elevations are available in your desired community. All elevations, floorplans and dimensions are for illustrative purposes only and are intended to convey a concept and visualization of our homes. They are subject to modifications at any time and are not to be used for contractual purposes. Square footage noted reflects Residential Measurement Standard.



Prairie



Modern Farmhouse



Contemporary





19 YEARS  
→ EST. 2004

[crystalcreekhomes.ca](http://crystalcreekhomes.ca)

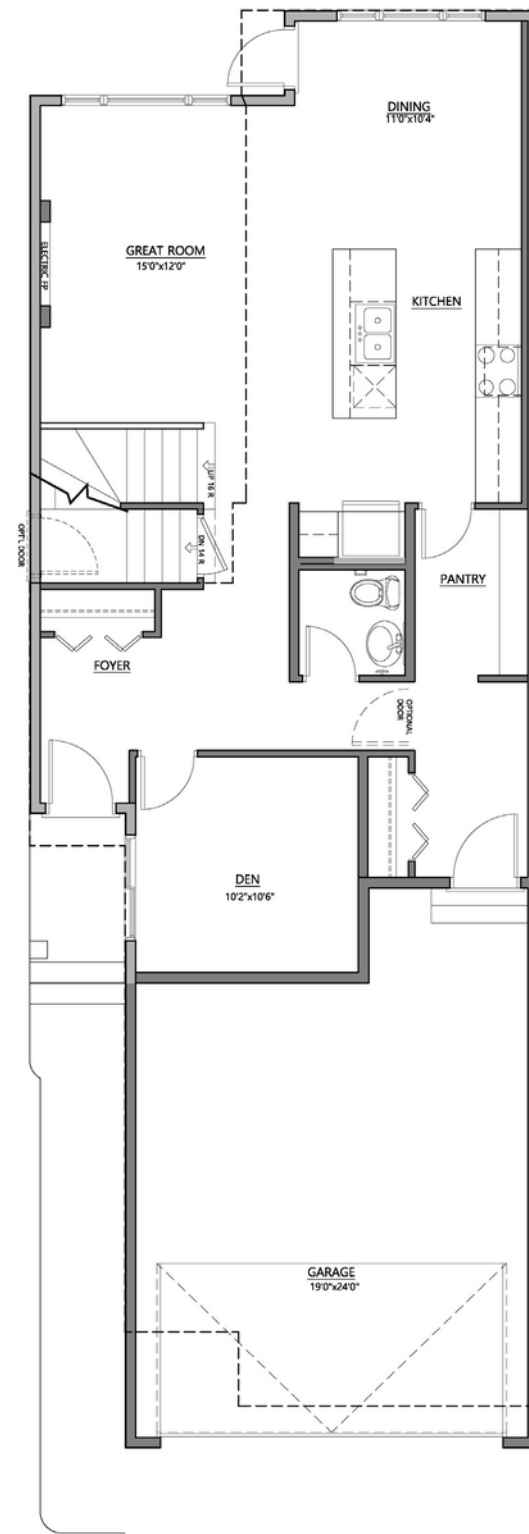


The Wyatt

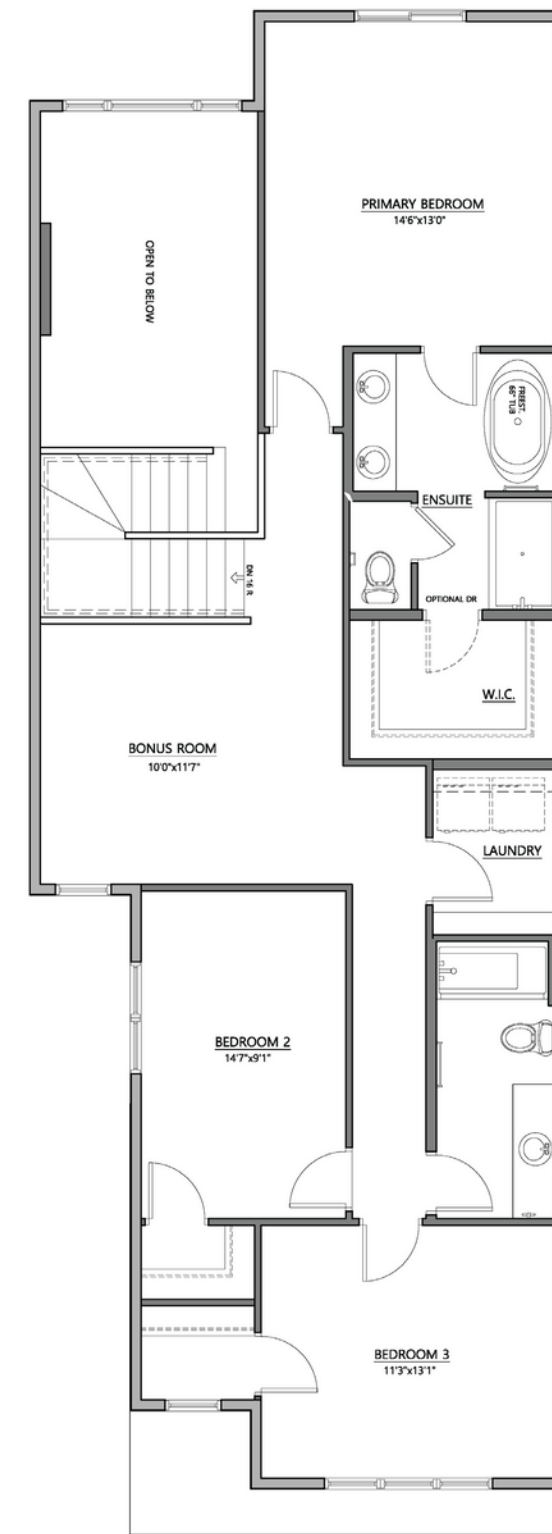
2.5 Bath  
3 Bed  
2157 sqft

# The Wyatt

2157 sqft



9'1" Main Floor | 984 sqft



8'1" Second Level | 1173 sqft

## Available Elevations:

• Please confirm with our Sales Team which elevations are available in your desired community. All elevations, floorplans and dimensions are for illustrative purposes only and are intended to convey a concept and visualization of our homes. They are subject to modifications at any time and are not to be used for contractual purposes. Square footage noted reflects Residential Measurement Standard.



Prairie



Modern Farmhouse



Contemporary





19 YEARS  
→ EST. 2004

[crystalcreekhomes.ca](http://crystalcreekhomes.ca)

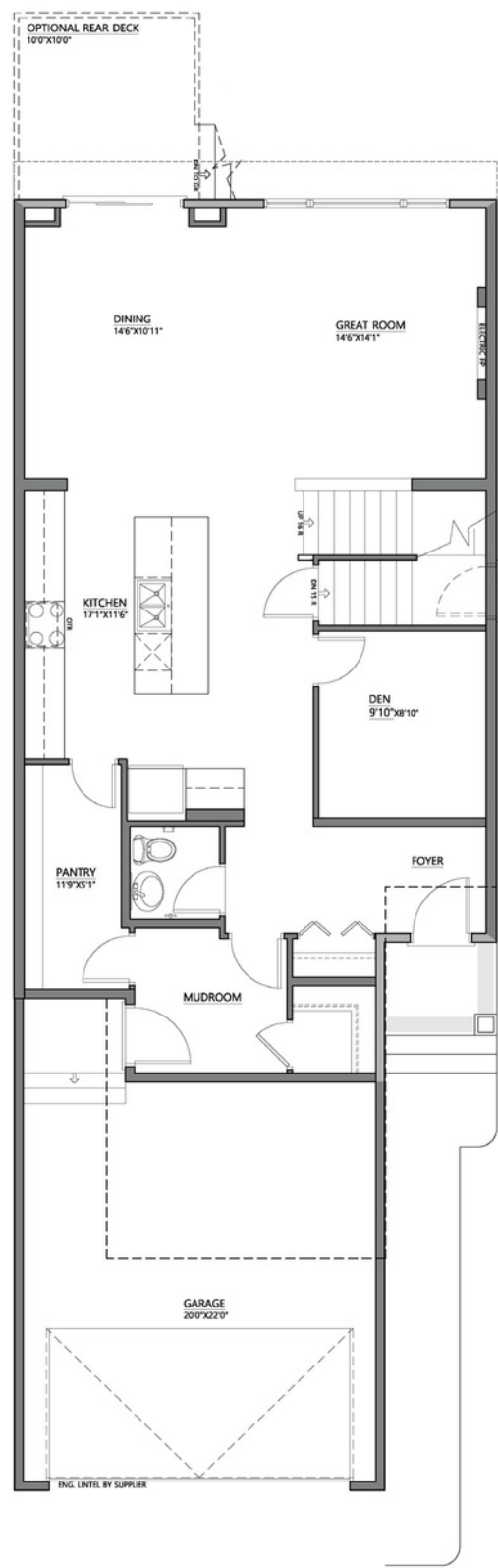


The Newport

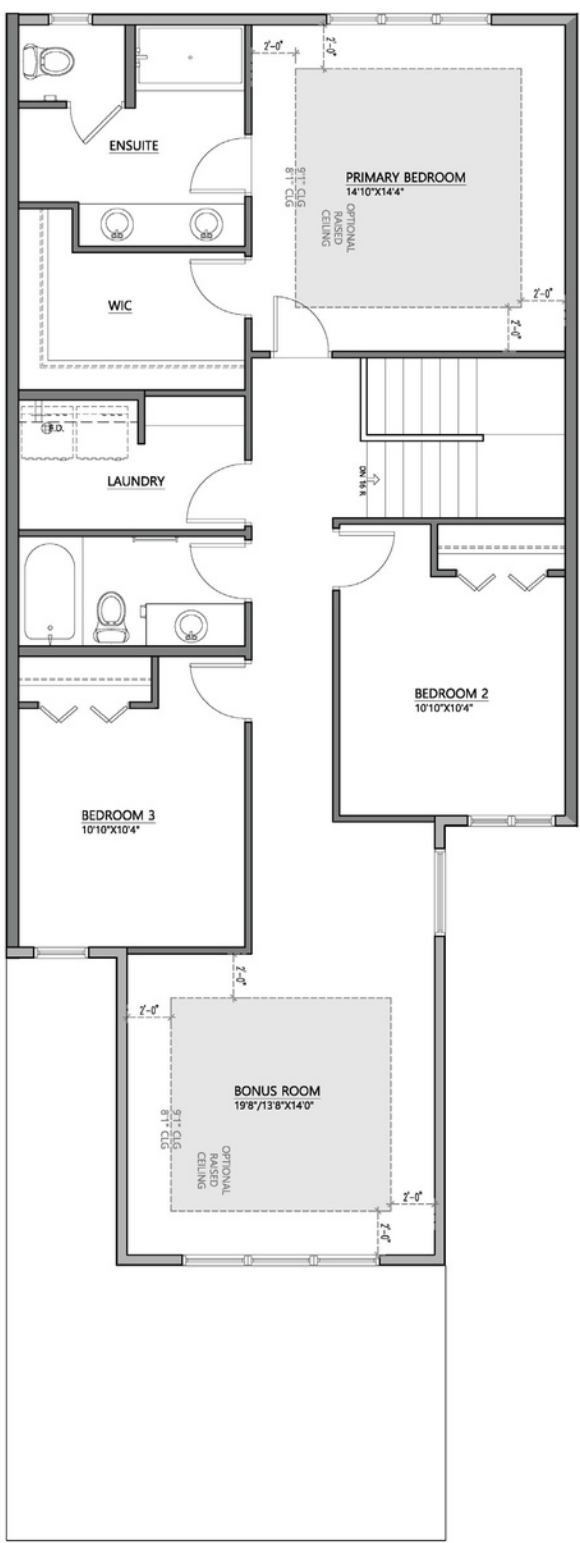
2.5 Bath  
3 Bed  
2387 sqft

# The Newport

2387 sqft



9'1" Main Floor | 1163 sqft



8'1" Second Level | 1224 sqft

## Available Elevations:

• Please confirm with our Sales Team which elevations are available in your desired community. All elevations, floorplans and dimensions are for illustrative purposes only and are intended to convey a concept and visualization of our homes. They are subject to modifications at any time and are not to be used for contractual purposes. Square footage noted reflects Residential Measurement Standard.



Prairie



Modern Farmhouse



Contemporary





19 YEARS  
→ EST. 2004

[crystalcreekhomes.ca](http://crystalcreekhomes.ca)

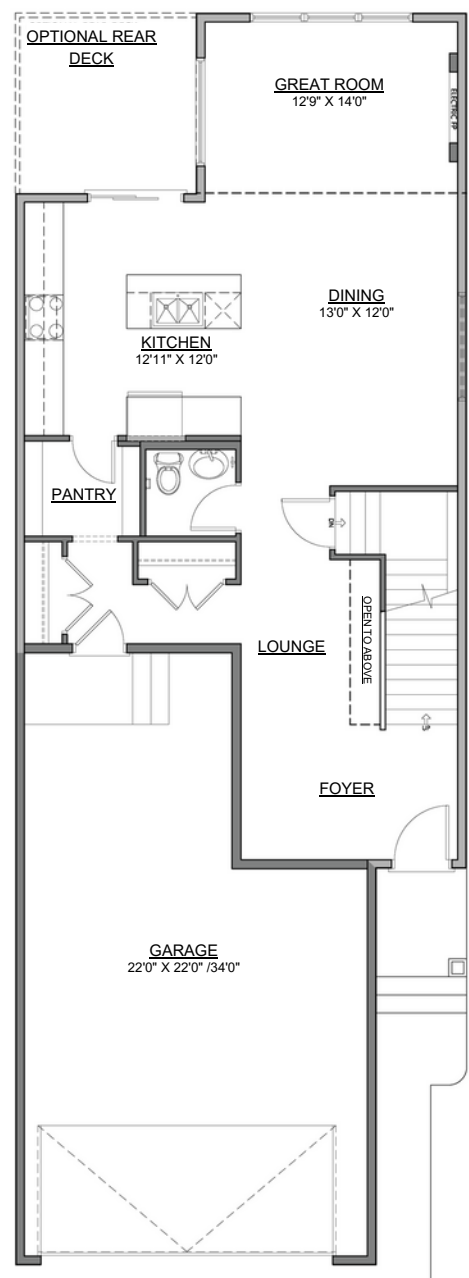


The Taylor

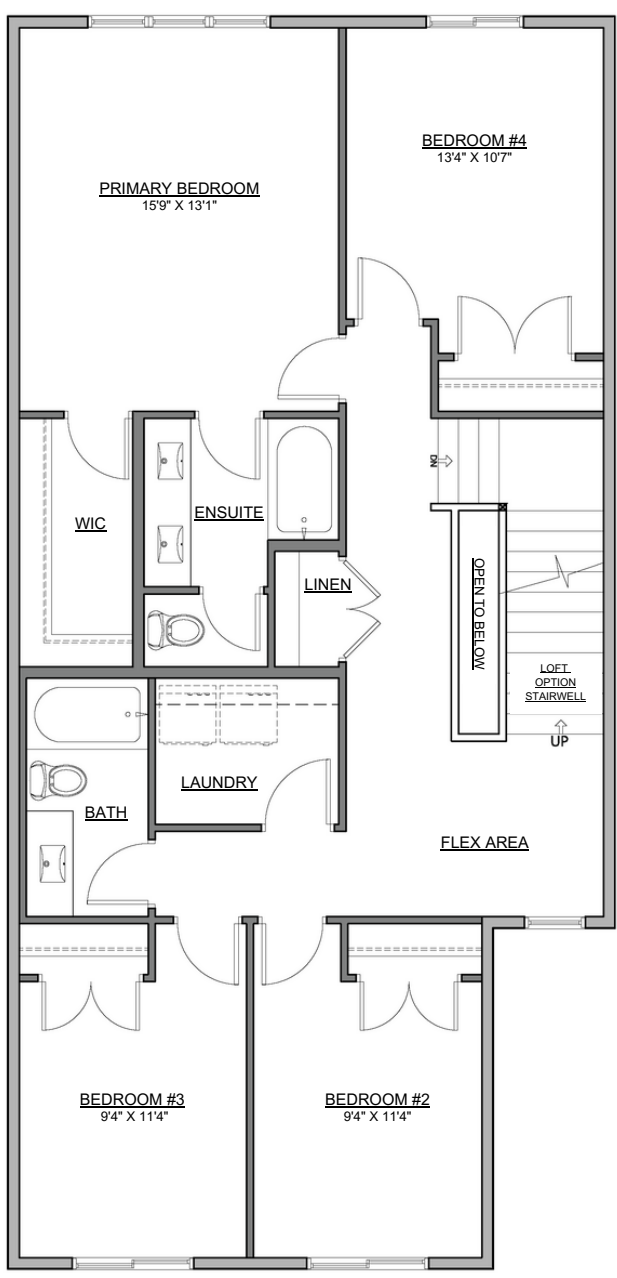
2.5 Bath  
4 Bed  
2075 sqft

# The Taylor

2075 sqft



9' 1" Main Floor | 944 sqft



8' 1" Upper Floor | 1131 sqft

## Available Elevations:

• Please confirm with our Sales Team which elevations are available in your desired community.

Farmhouse - Loft »



Farmhouse - Standard »



Craftsman »







## Cooper

207 Belvedere Crescent

**1784** SQ FT

4 BEDROOMS | 3 BATHROOMS | LANED HOME



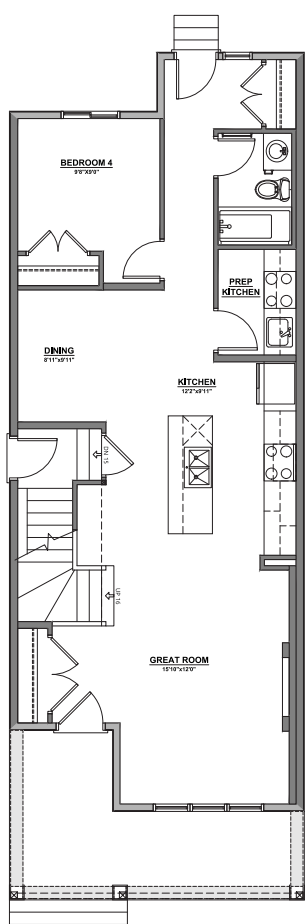
[crystalcreekhomes.ca](http://crystalcreekhomes.ca)

# Cooper

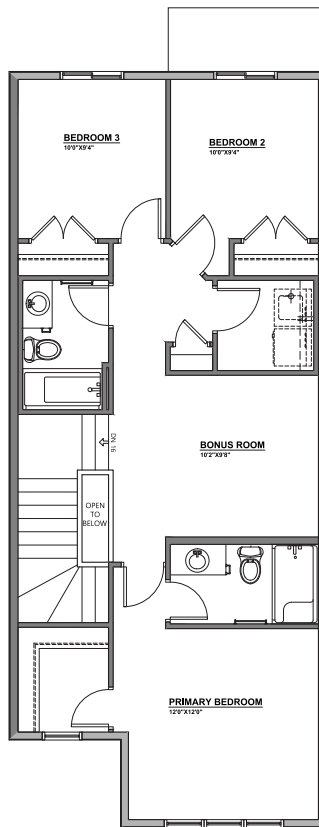
207 Belvedere Crescent

1784 SQ FT

4 BEDROOMS | 3 BATHROOMS | LANED HOME



MAIN FLOOR | 952 SQ FT



UPPER FLOOR | 832 SQ FT



INTERIOR FINISHINGS | CORTES

Contact our sales team for more information: [belvedere@crystalcreekhomes.ca](mailto:belvedere@crystalcreekhomes.ca) | 403-984-3501

All elevations, floorplans and dimensions are for illustrative purposes only and are intended to convey a concept visualization of our homes. They are subject to modifications at any time and are not to be used for contractual purposes.



[crystalcreekhomes.ca](https://crystalcreekhomes.ca)





# Whitney

199 Belvedere Crescent

**1712** SQ FT

3 BEDROOMS | 2.5 BATHROOMS | LANED HOME



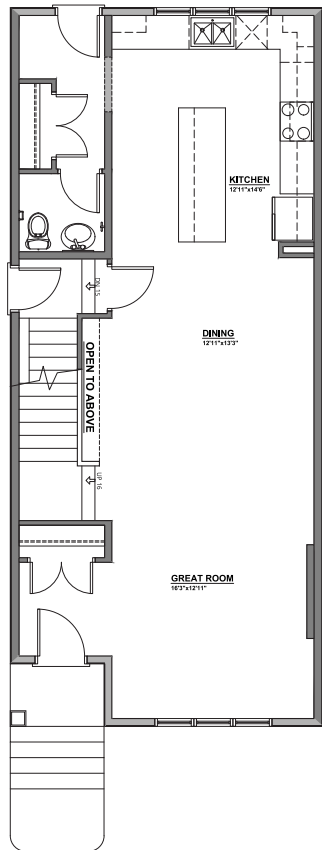
[crystalcreekhomes.ca](http://crystalcreekhomes.ca)

# Whitney

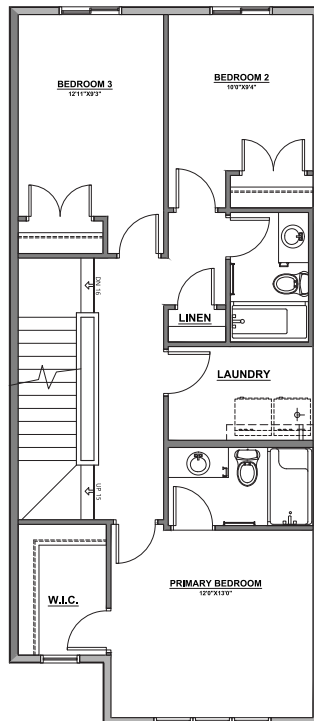
199 Belvedere Crescent

1712 SQ FT

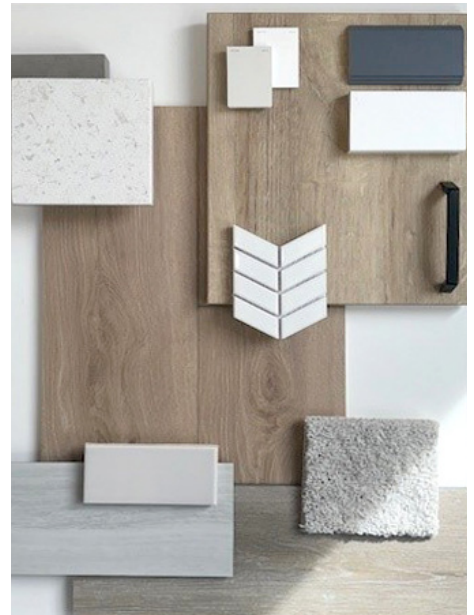
3 BEDROOMS | 2.5 BATHROOMS | LANED HOME



MAIN FLOOR | 896 SQ FT



UPPER FLOOR | 816 SQ FT



INTERIOR FINISHINGS | TOFINO

Contact our sales team for more information: [belvedere@crystalcreekhomes.ca](mailto:belvedere@crystalcreekhomes.ca) | 403-984-3501

All elevations, floorplans and dimensions are for illustrative purposes only and are intended to convey a concept visualization of our homes. They are subject to modifications at any time and are not to be used for contractual purposes.



[crystalcreekhomes.ca](http://crystalcreekhomes.ca)





## Avery

191 Belvedere Crescent

**1560** SQ FT

3 BEDROOMS | 2.5 BATHROOMS | LANED HOME



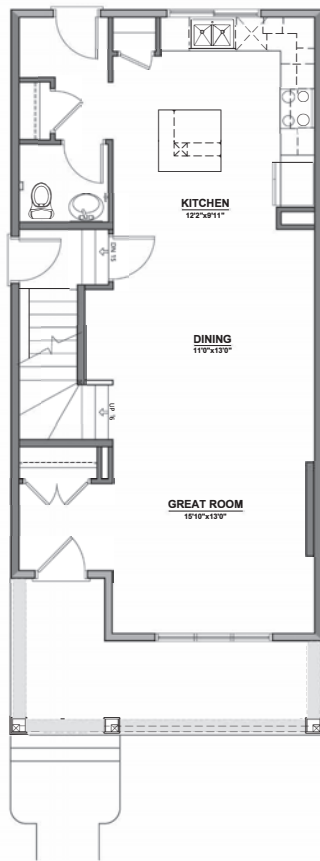
[crystalcreekhomes.ca](http://crystalcreekhomes.ca)

# Avery

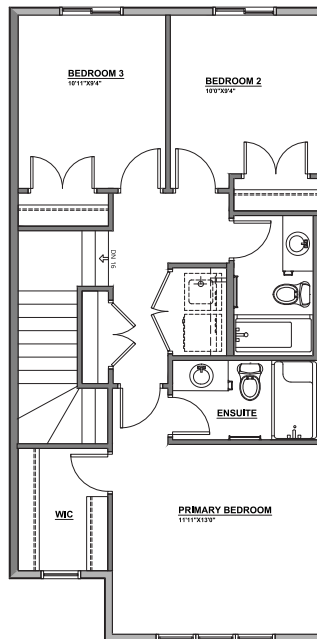
191 Belvedere Crescent

**1560** SQ FT

3 BEDROOMS | 2.5 BATHROOMS | LANED HOME



MAIN FLOOR | 784 SQ FT



UPPER FLOOR | 776 SQ FT



INTERIOR FINISHINGS | SIDNEY

Contact our sales team for more information: [belvedere@crystalcreekhomes.ca](mailto:belvedere@crystalcreekhomes.ca) | 403-984-3501

All elevations, floorplans and dimensions are for illustrative purposes only and are intended to convey a concept visualization of our homes. They are subject to modifications at any time and are not to be used for contractual purposes.



[crystalcreekhomes.ca](http://crystalcreekhomes.ca)





## Aimee

183 Belvedere Crescent

**1262** SQ FT

3 BEDROOMS | 2.5 BATHROOMS | LANED HOME



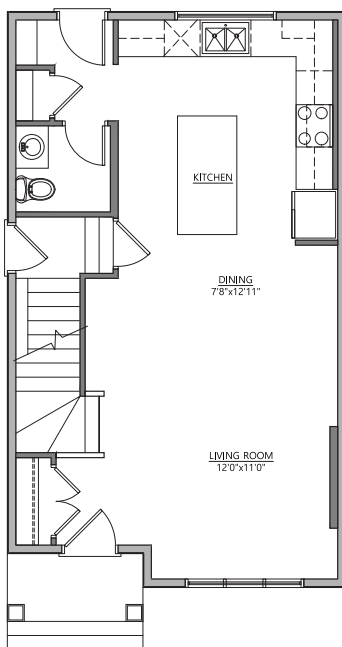
[crystalcreekhomes.ca](http://crystalcreekhomes.ca)

# Aimee

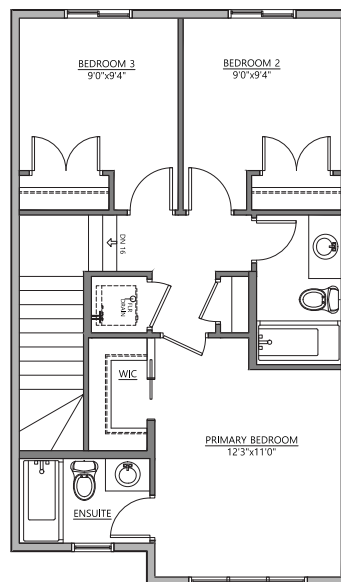
183 Belvedere Crescent

**1262** SQ FT

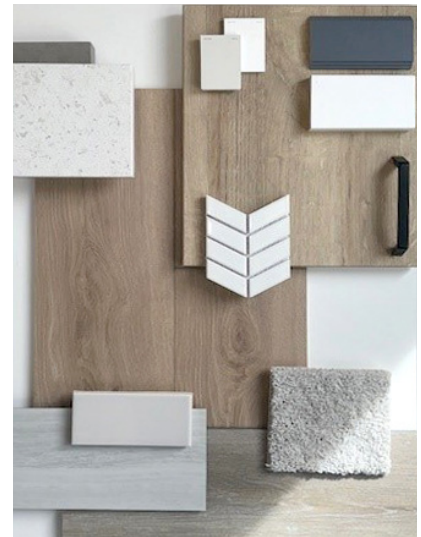
3 BEDROOMS | 2.5 BATHROOMS | LANED HOME



MAIN FLOOR | 664 SQ FT



UPPER FLOOR | 598 SQ FT



INTERIOR FINISHINGS | TOFINO

Contact our sales team for more information: [belvedere@crystalcreekhomes.ca](mailto:belvedere@crystalcreekhomes.ca) | 403-984-3501

All elevations, floorplans and dimensions are for illustrative purposes only and are intended to convey a concept visualization of our homes. They are subject to modifications at any time and are not to be used for contractual purposes.



[crystalcreekhomes.ca](http://crystalcreekhomes.ca)





\*Rendering not fully representative of home, actual colours not reflected.

## Jackson

175 Belvedere Crescent

**1904** SQ FT

4 BEDROOMS | 3 BATHROOMS | LANED HOME



[crystalcreekhomes.ca](http://crystalcreekhomes.ca)

# Jackson

175 Belvedere Crescent

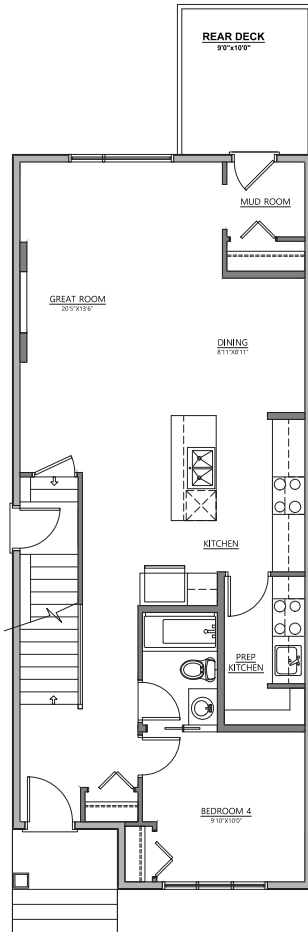
1904 SQ FT

4 BEDROOMS | 3 BATHROOMS | LANED HOME

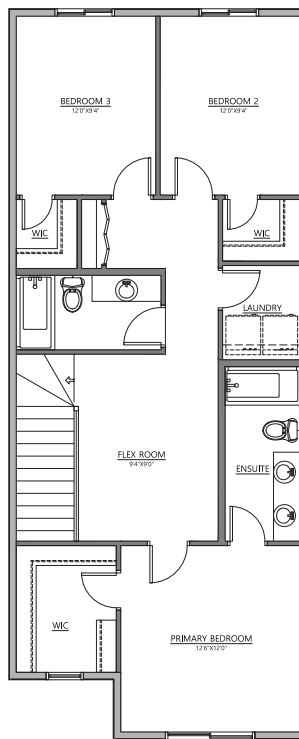


FRONT ELEVATION

MODERN FARMHOUSE



MAIN FLOOR | 952 SQ FT



UPPER FLOOR | 952 SQ FT



INTERIOR FINISHINGS | CORTES

Contact our sales team for more information: [belvedere@crystalcreekhomes.ca](mailto:belvedere@crystalcreekhomes.ca) | 403-984-3501

All elevations, floorplans and dimensions are for illustrative purposes only and are intended to convey a concept visualization of our homes. They are subject to modifications at any time and are not to be used for contractual purposes.



[crystalcreekhomes.ca](http://crystalcreekhomes.ca)