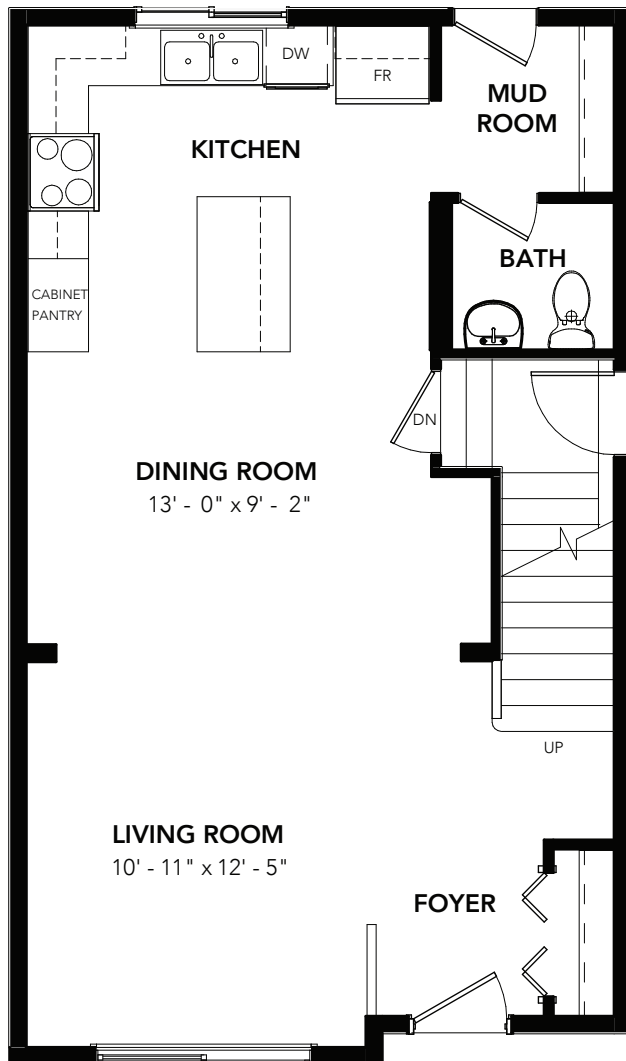


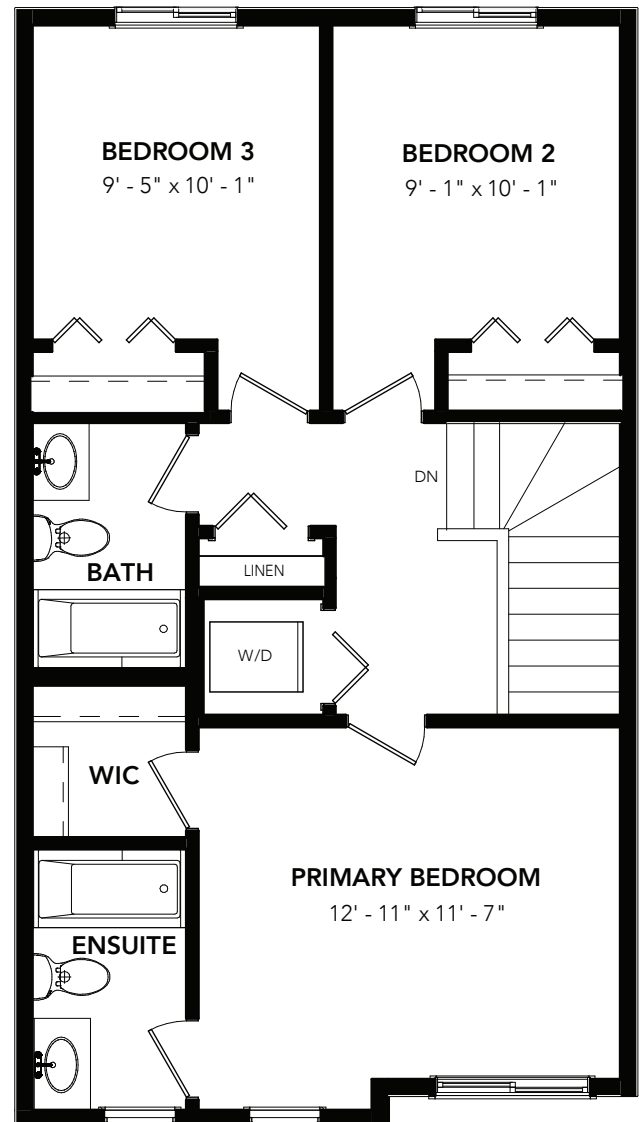
# EDISON



3 BEDS 2.5 BATHS 1384 SQ FT 20' WIDE



MAIN FLOOR : 672 SQ FT

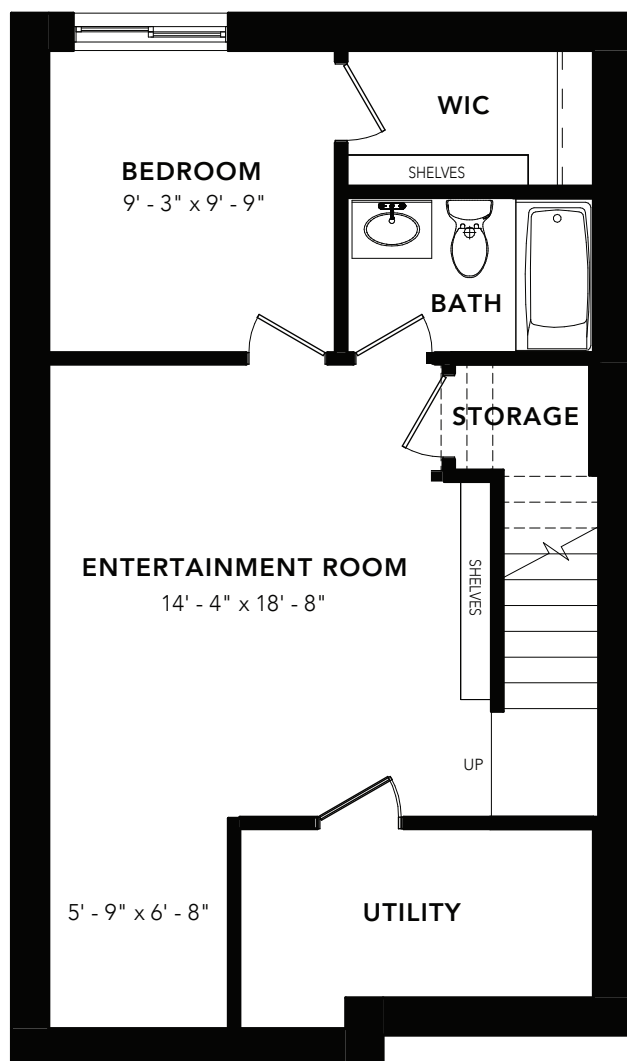


SECOND FLOOR: 712 SQ FT

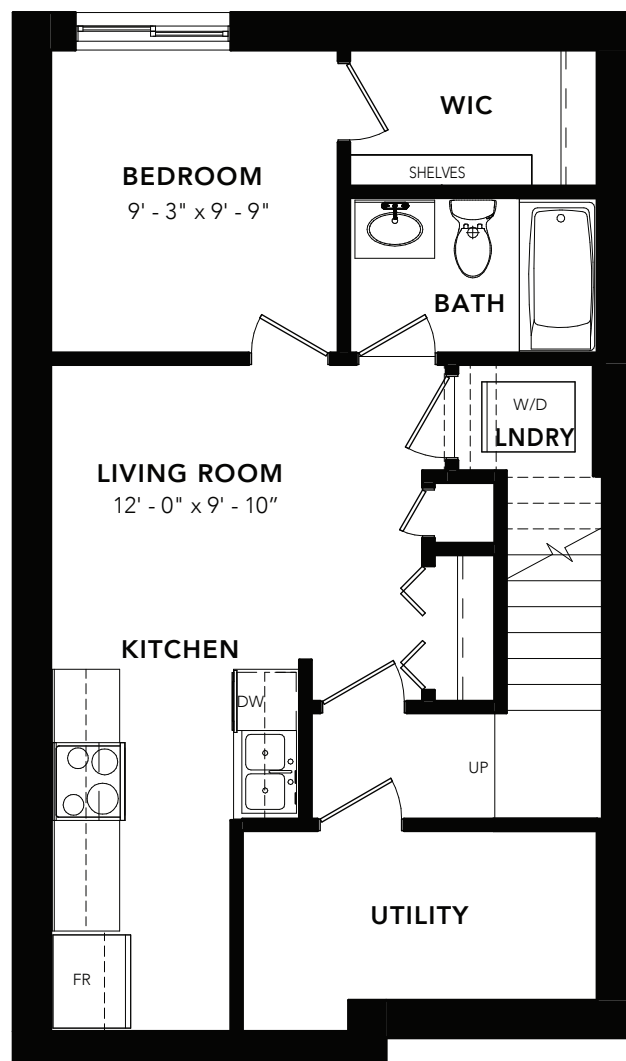
# EDISON

## OPTIONS

3 BEDS 2.5 BATHS 1384 SQ FT 20' WIDE



BASEMENT DEVELOPMENT: 466 SQ FT



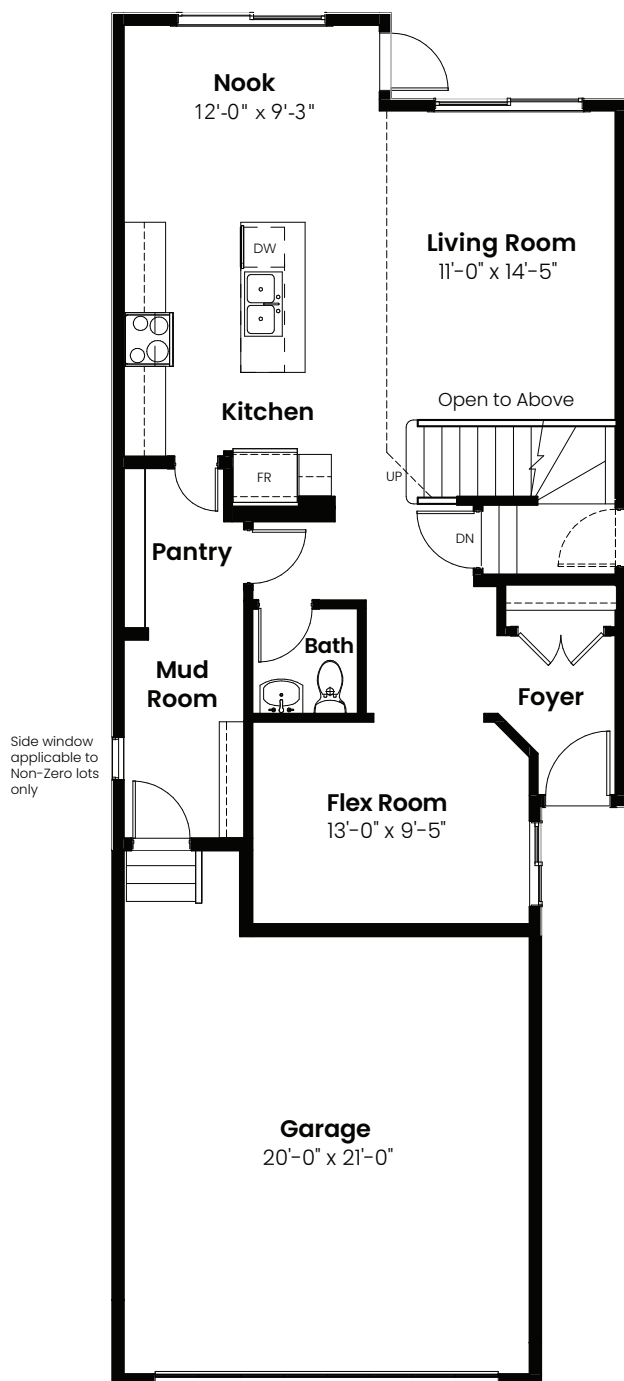
BASEMENT SUITE: 466 SQ FT

3 Bedrooms | 2.5 Bathrooms

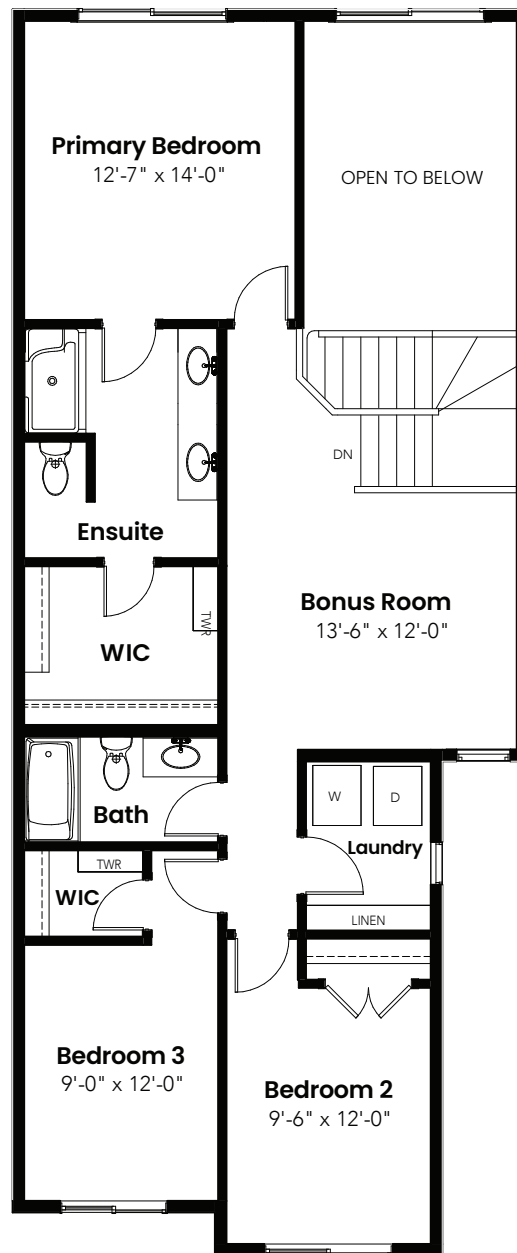
Eiffel

2,076 sqft

24' Wide



Main Floor: 940 Sq Ft



Second Floor: 1136 Sq Ft

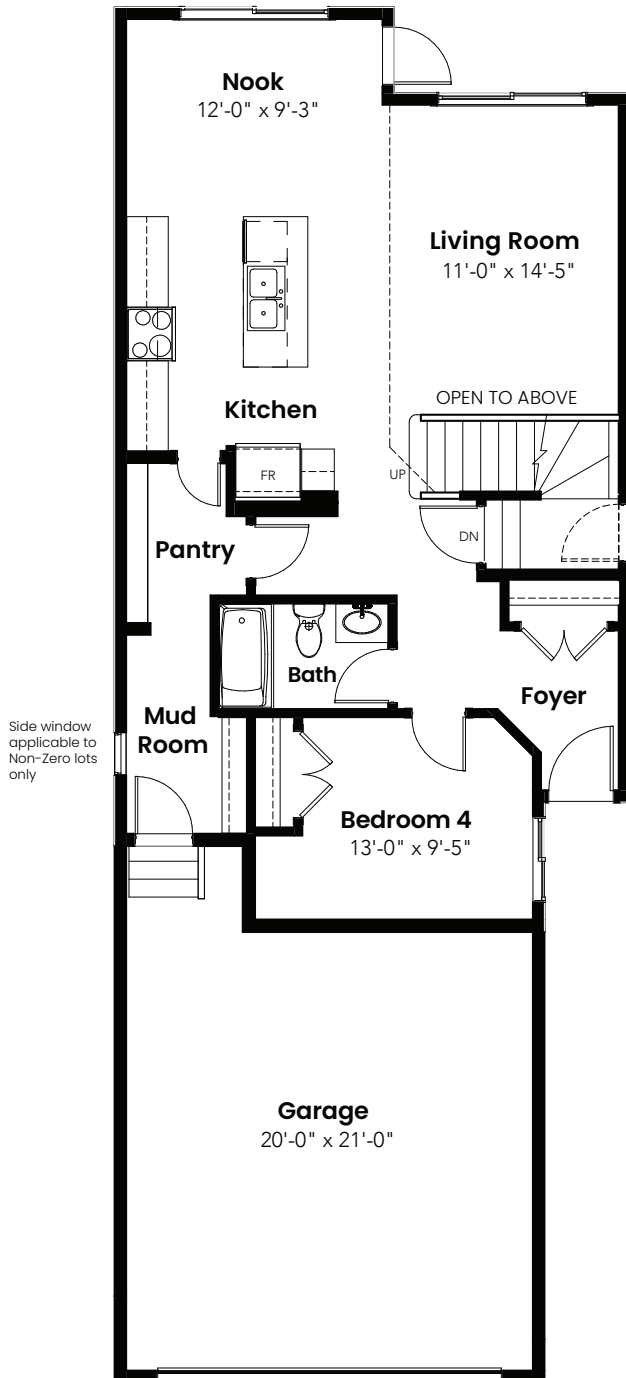


© 2025 Landmark Group of Companies Inc. All rights reserved. Any use or reproduction in whole or in part of these promotional materials without the prior written authorization of Landmark Group of Companies Inc. is strictly prohibited. Floor plans, specifications, pricing and dimensions shown are approximate and subject to change without notice. Artist rendering shown. Interior room dimensions are taken from inside of walls. Garage dimensions are taken from outside of walls. Revised on 01/15/2025.

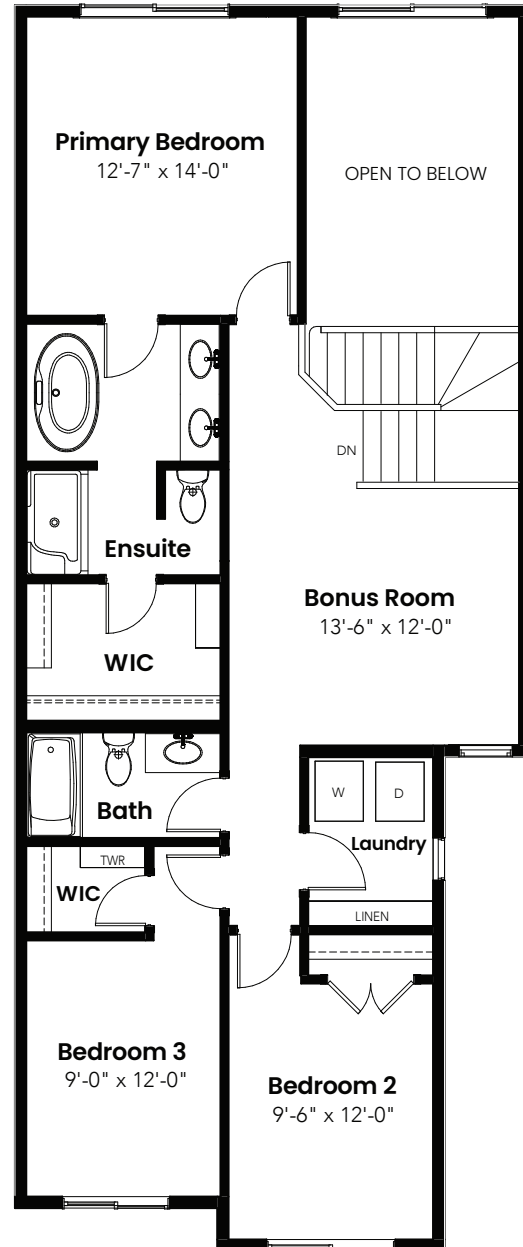
3 Beds | 2.5 Baths | 2,076 Sq. Ft. | 24' Wide

# Eiffel

## Options



Main Floor Bedroom &  
Full Bath Option: 940 Sq Ft



4 Piece Ensuite Option: 1136 Sq Ft



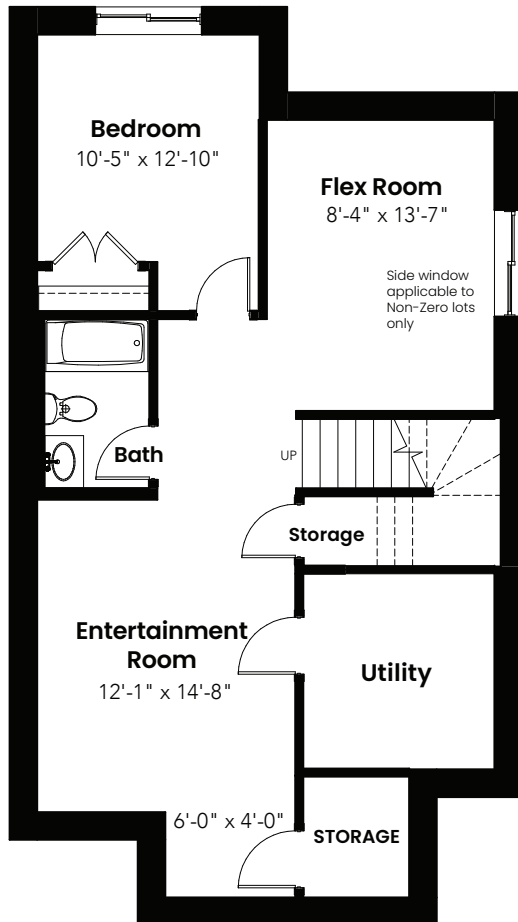
© 2025 Landmark Group of Companies Inc. All rights reserved. Any use or reproduction in whole or in part of these promotional materials without the prior written authorization of Landmark Group of Companies Inc. is strictly prohibited. Floor plans, specifications, pricing and dimensions shown are approximate and subject to change without notice. Artist rendering shown. Interior room dimensions are taken from inside of walls. Garage dimensions are taken from outside of walls. Revised on 01/15/2025.



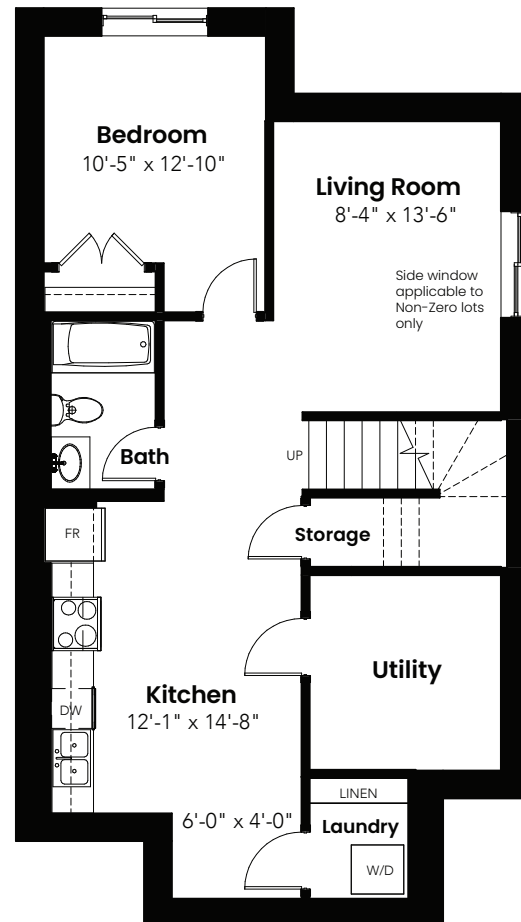
3 Beds | 2.5 Baths | 2,076 Sq. Ft. | 24' Wide

# Eiffel

## Basement Options



Basement Development  
Option: 690 Sq Ft



Basement Suite Option: 690 Sq Ft



© 2025 Landmark Group of Companies Inc. All rights reserved. Any use or reproduction in whole or in part of these promotional materials without the prior written authorization of Landmark Group of Companies Inc. is strictly prohibited. Floor plans, specifications, pricing and dimensions shown are approximate and subject to change without notice. Artist rendering shown. Interior room dimensions are taken from inside of walls. Garage dimensions are taken from outside of walls. Revised on 01/15/2025.

3 Beds | 2.5 Baths | 2,076 Sq. Ft. | 24' Wide

# Eiffel

## Elevation



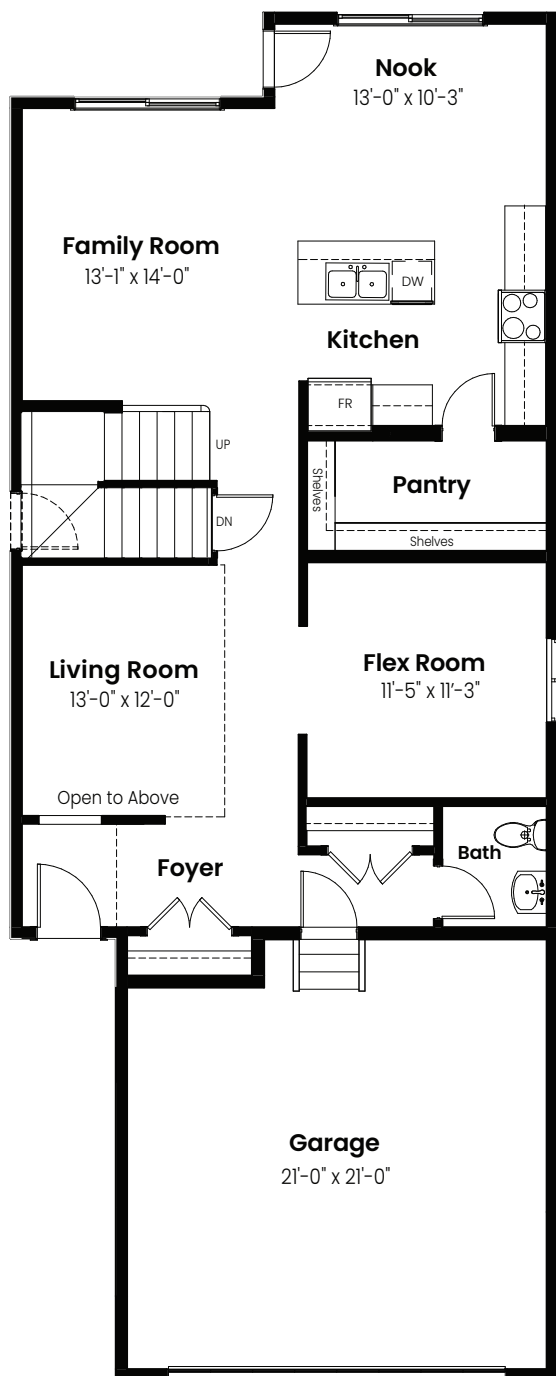
© 2025 Landmark Group of Companies Inc. All rights reserved. Any use or reproduction in whole or in part of these promotional materials without the prior written authorization of Landmark Group of Companies Inc. is strictly prohibited. Floor plans, specifications, pricing and dimensions shown are approximate and subject to change without notice. Artist rendering shown. Interior room dimensions are taken from inside of walls. Garage dimensions are taken from outside of walls. Revised on 01/15/2025.

3 Bedrooms | 2.5 Bathrooms

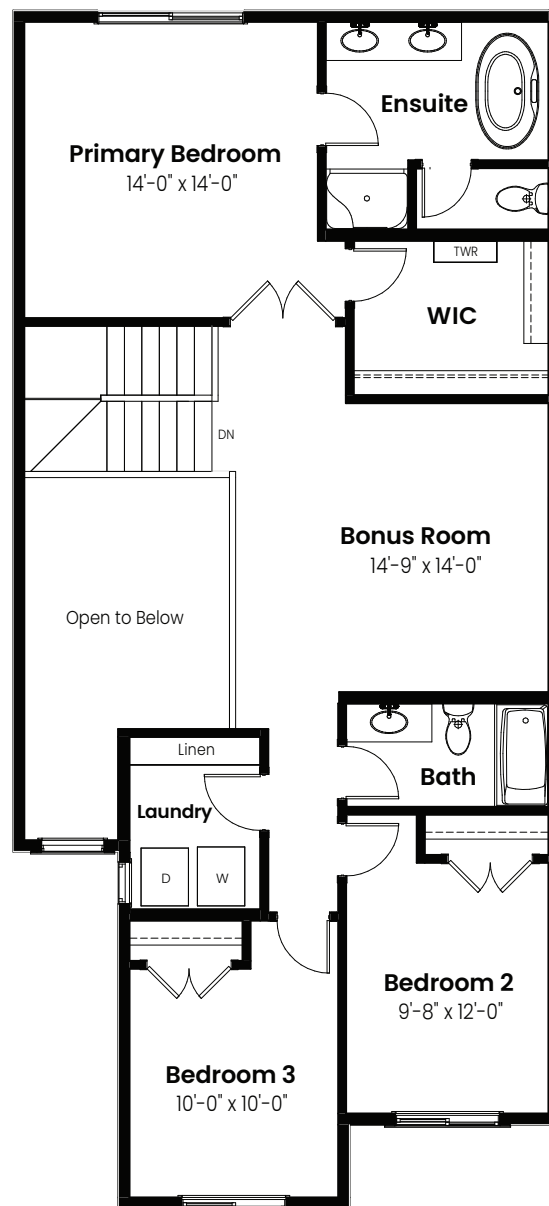
# Everest

2,327 sqft

26' Wide



Main Floor: 1112 Sq Ft



Second Floor: 1215 Sq Ft

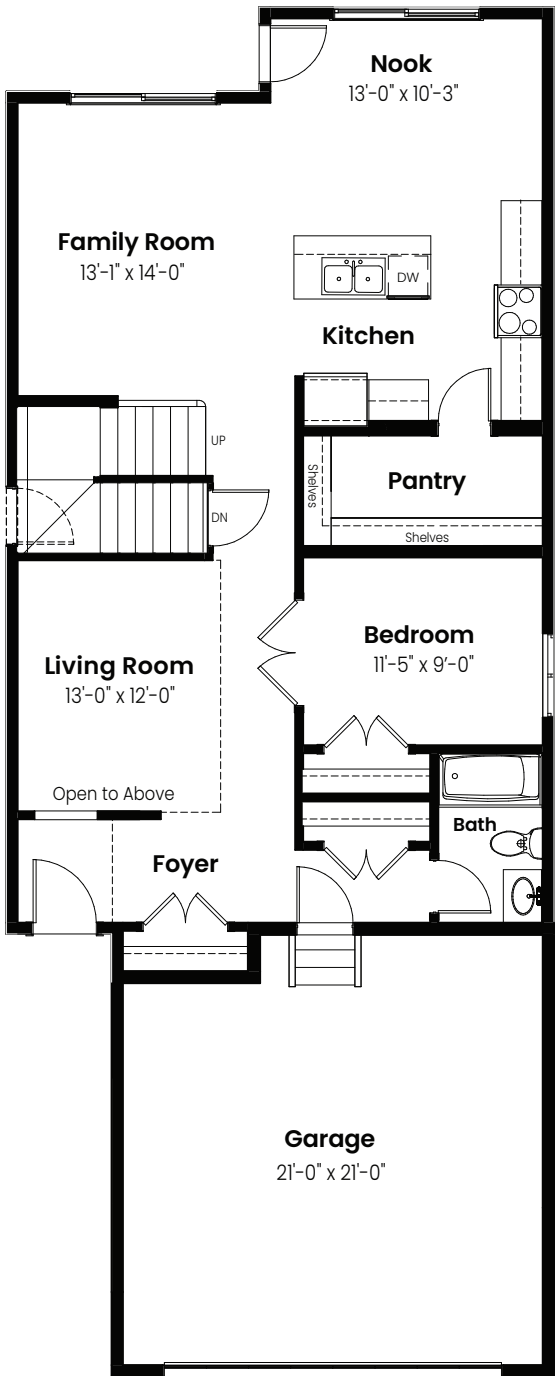


© 2025 Landmark Group of Companies Inc. All rights reserved. Any use or reproduction in whole or in part of these promotional materials without the prior written authorization of Landmark Group of Companies Inc. is strictly prohibited. Floor plans, specifications, pricing and dimensions shown are approximate and subject to change without notice. Artist rendering shown. Interior room dimensions are taken from inside of walls. Garage dimensions are taken from outside of walls. Revised on 01/17/2025.

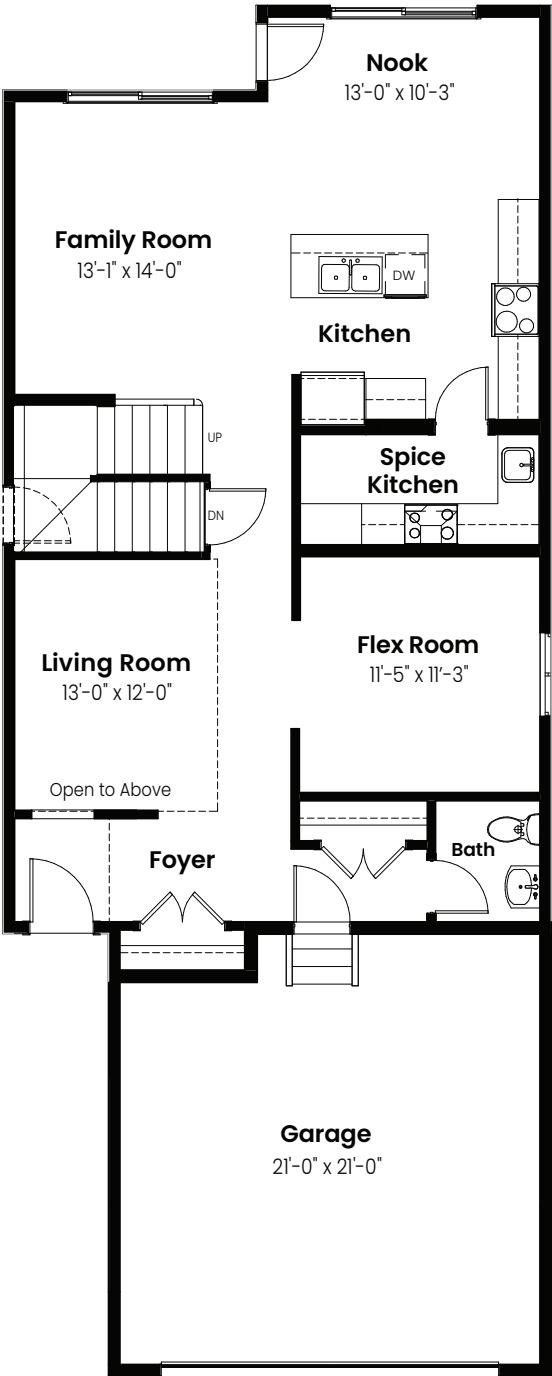
3 Beds | 2.5 Baths | 2,327 Sq. Ft. | 26' Wide

# Everest

# Options



Main Floor Bedroom Option: 1112 Sq Ft



Spice Kitchen Option: 1112 Sq Ft



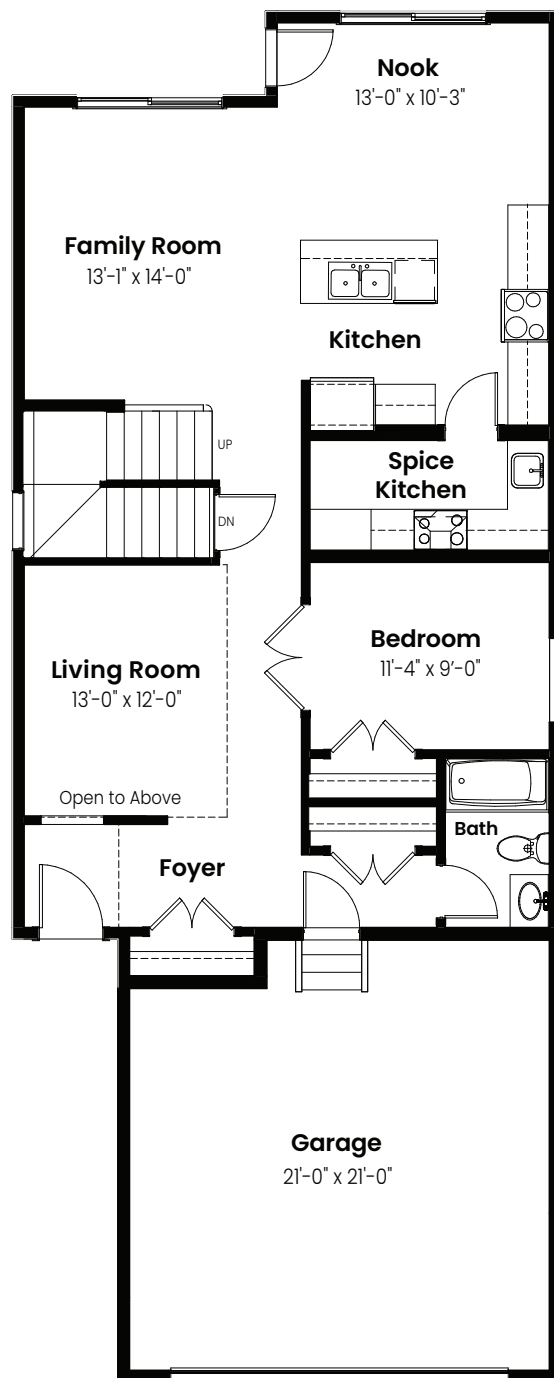
© 2025 Landmark Group of Companies Inc. All rights reserved. Any use or reproduction in whole or in part of these promotional materials without the prior written authorization of Landmark Group of Companies Inc. is strictly prohibited. Floor plans, specifications, pricing and dimensions shown are approximate and subject to change without notice. Artist rendering shown. Interior room dimensions are taken from inside of walls. Garage dimensions are taken from outside of walls. Revised on 01/17/2025.



3 Beds | 2.5 Baths | 2,327 Sq. Ft. | 26' Wide

# Everest

## Options



Main Floor Bedroom &  
Spice Kitchen Option: 1112 Sq Ft

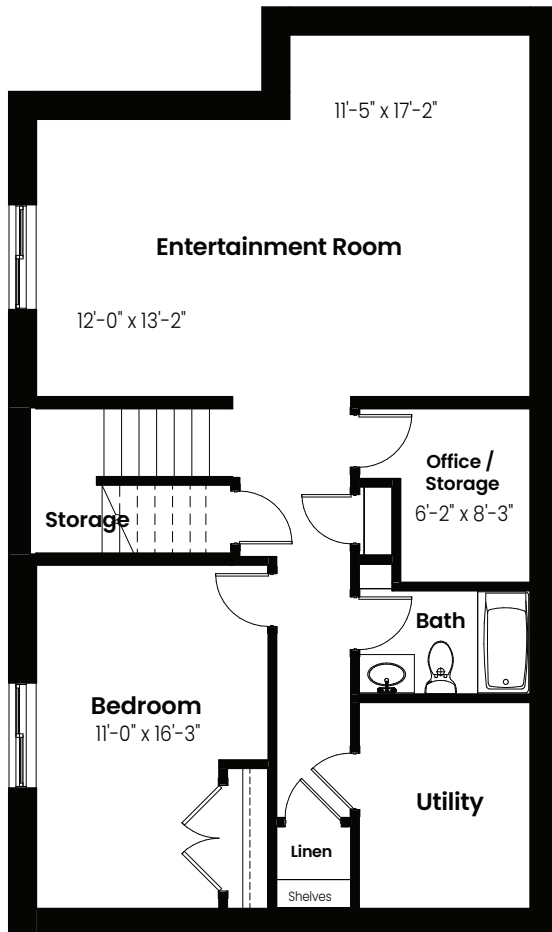


© 2025 Landmark Group of Companies Inc. All rights reserved. Any use or reproduction in whole or in part of these promotional materials without the prior written authorization of Landmark Group of Companies Inc. is strictly prohibited. Floor plans, specifications, pricing and dimensions shown are approximate and subject to change without notice. Artist rendering shown. Interior room dimensions are taken from inside of walls. Garage dimensions are taken from outside of walls. Revised on 01/17/2025.

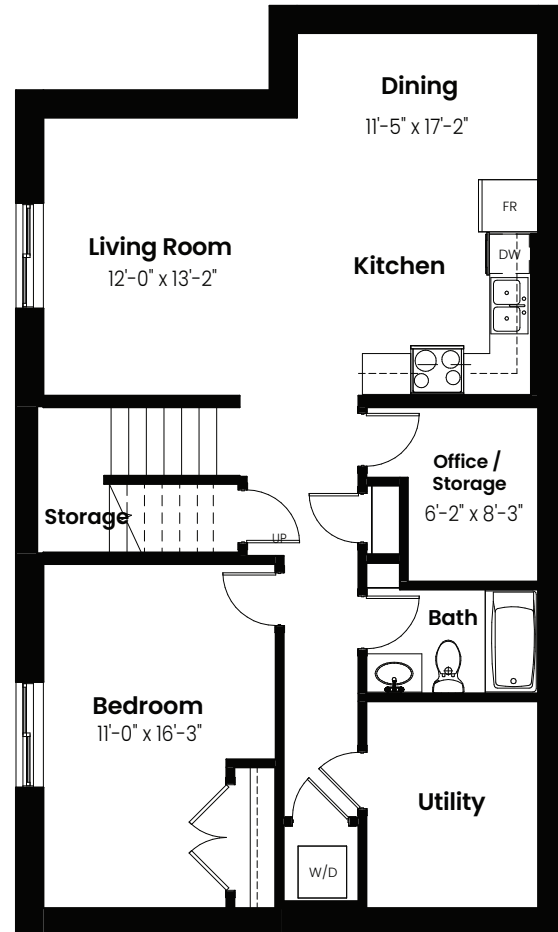
3 Beds | 2.5 Baths | 2,327 Sq. Ft. | 26' Wide

# Everest

## Basement Options



Basement Development  
Option: 847 Sq Ft



Basement Suite Option: 847 Sq Ft



© 2025 Landmark Group of Companies Inc. All rights reserved. Any use or reproduction in whole or in part of these promotional materials without the prior written authorization of Landmark Group of Companies Inc. is strictly prohibited. Floor plans, specifications, pricing and dimensions shown are approximate and subject to change without notice. Artist rendering shown. Interior room dimensions are taken from inside of walls. Garage dimensions are taken from outside of walls. Revised on 01/17/2025.

3 Beds | 2.5 Baths | 2,327 Sq. Ft. | 26' Wide

# Everest

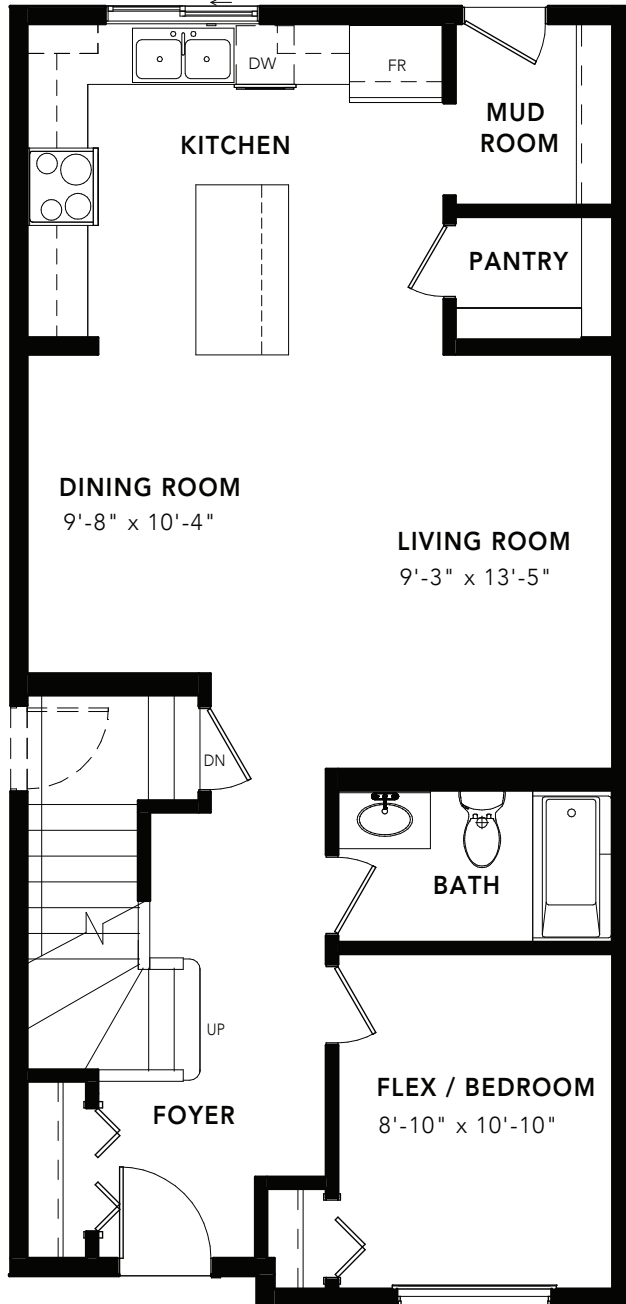
## Elevation



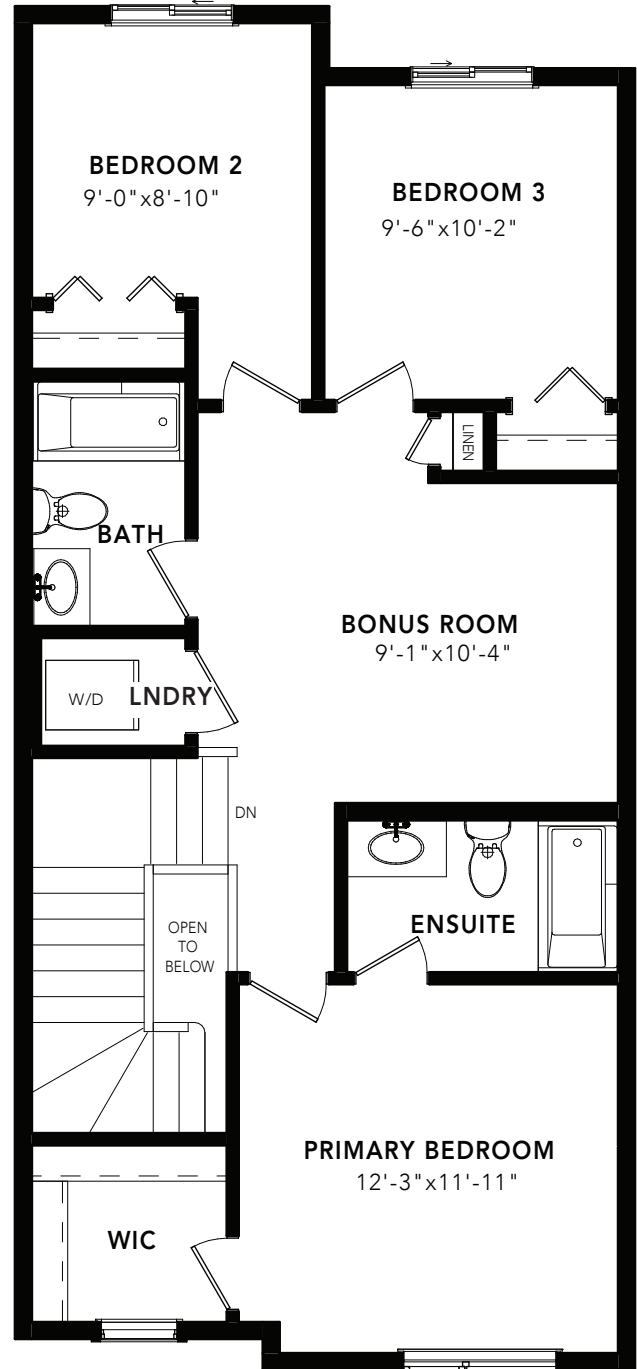
© 2025 Landmark Group of Companies Inc. All rights reserved. Any use or reproduction in whole or in part of these promotional materials without the prior written authorization of Landmark Group of Companies Inc. is strictly prohibited. Floor plans, specifications, pricing and dimensions shown are approximate and subject to change without notice. Artist rendering shown. Interior room dimensions are taken from inside of walls. Garage dimensions are taken from outside of walls. Revised on 01/17/2025.

# FISHER

4 BEDS 3 BATHS 1673 SQ FT 20' WIDE



MAIN FLOOR : 832 SQ FT



SECOND FLOOR: 841 SQ FT



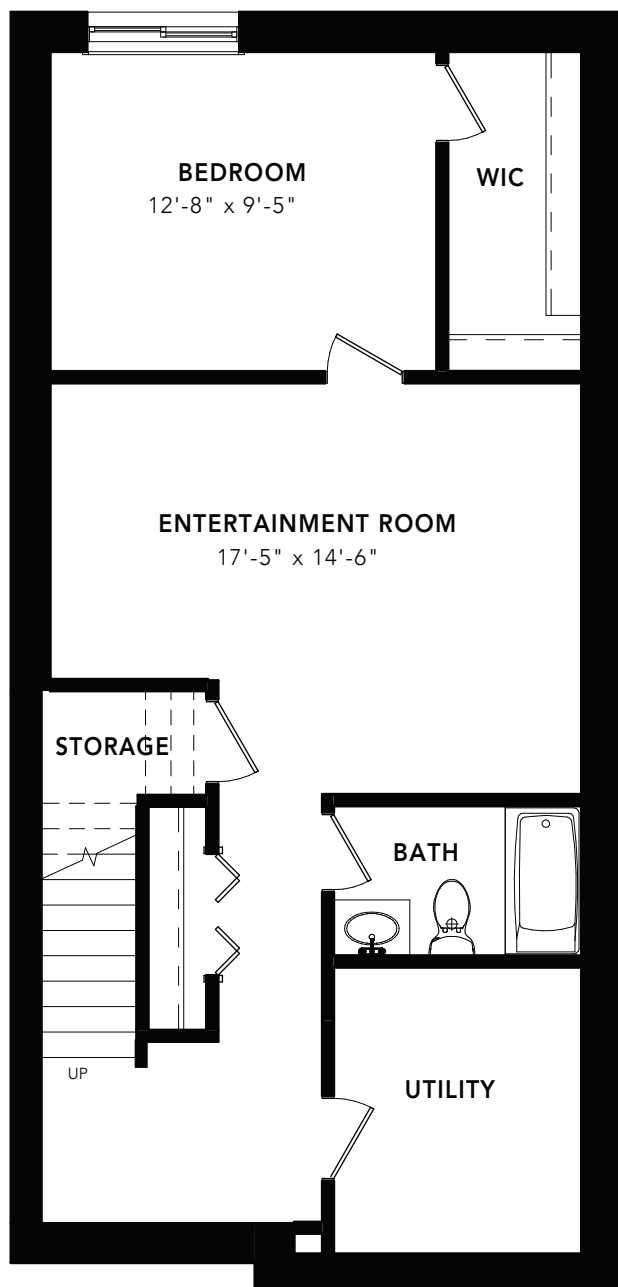
© 2024 Landmark Group of Companies Inc. All rights reserved. Any use or reproduction in whole or in part of these promotional materials without the prior written authorization of Landmark Group of Companies Inc. is strictly prohibited. Floor plans, specifications, pricing and dimensions shown are approximate and subject to change without notice. Artist rendering shown. Interior room dimensions are taken from inside of walls. Garage dimensions are taken from outside of walls. Revised on 1/16/2024.



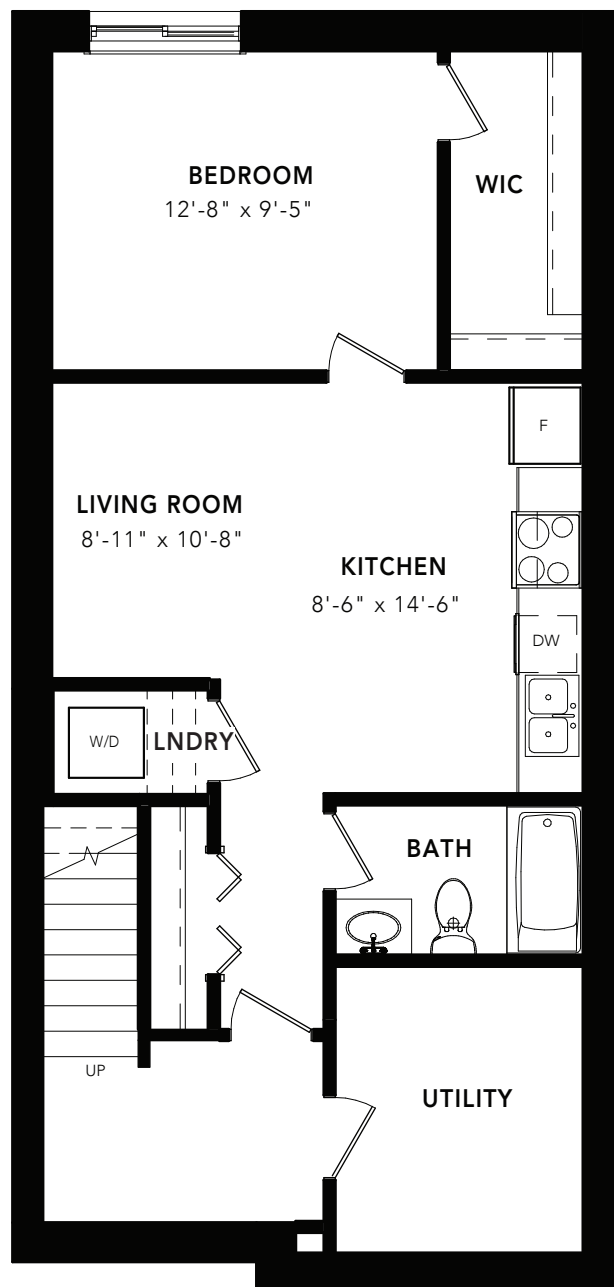
# FISHER

OPTIONS

4 BEDS 3 BATHS 1673 SQ FT 20' WIDE



BASEMENT DEVELOPMENT OPTION: 613 SQ FT



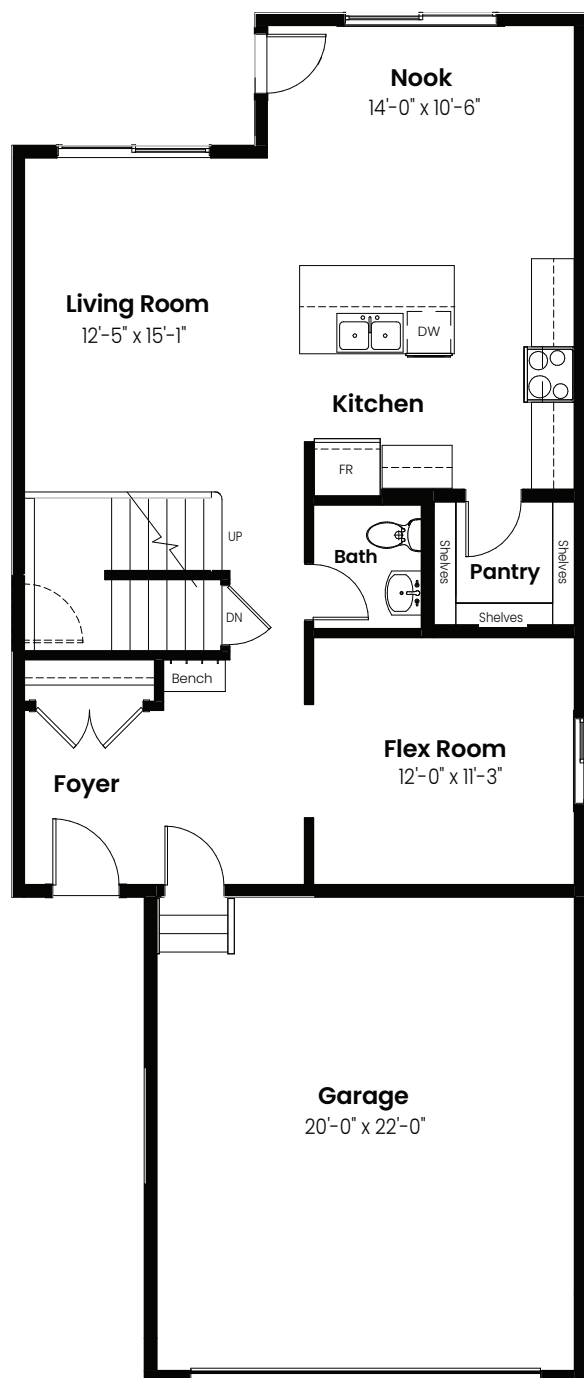
BASEMENT SUITE OPTION: 613 SQ FT

3 Bedrooms | 2.5 Bathrooms

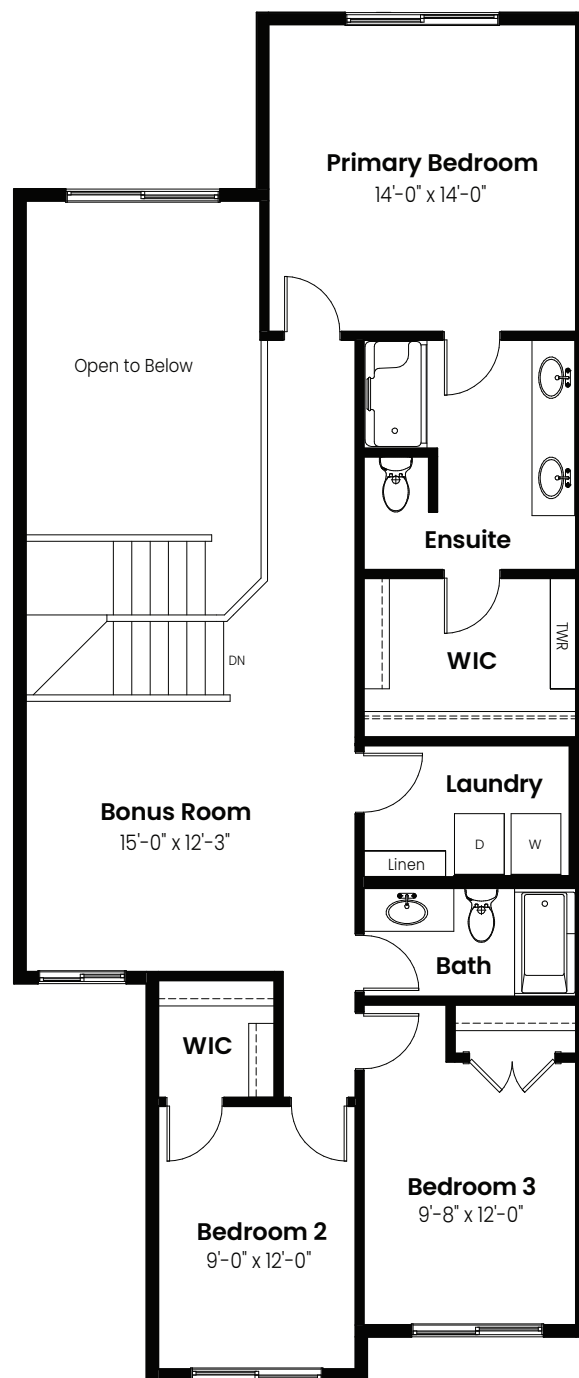
# Fuji

2,204 sqft

26' Wide



Main Floor: 974 Sq Ft



Second Floor: 1230 Sq Ft

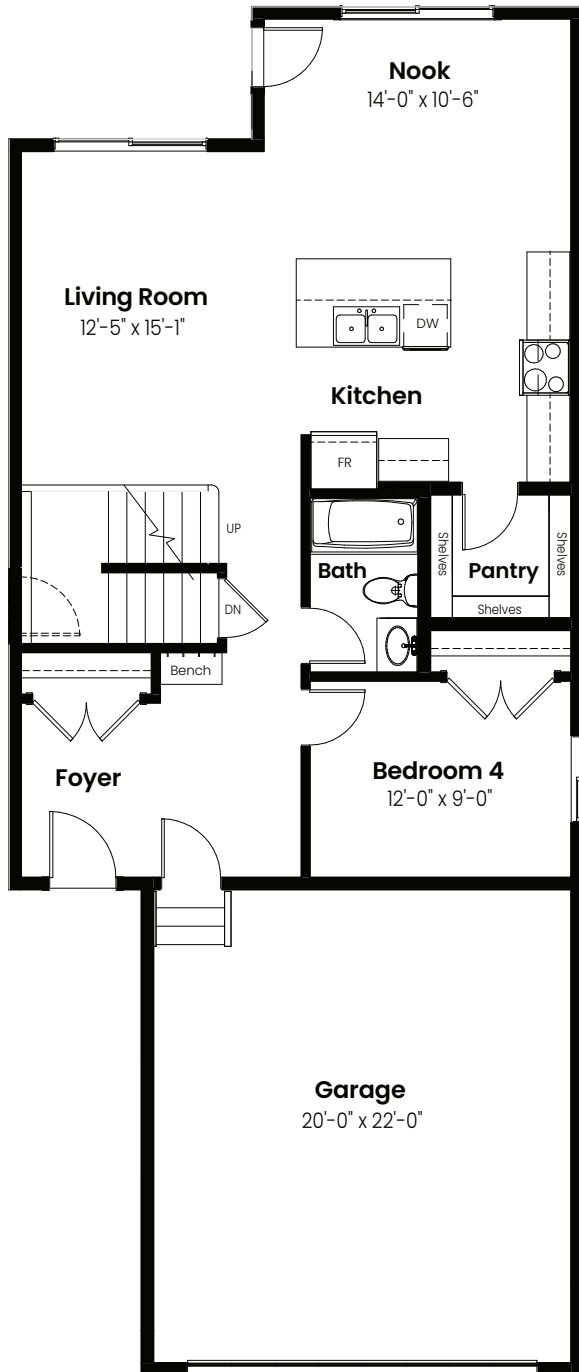


© 2025 Landmark Group of Companies Inc. All rights reserved. Any use or reproduction in whole or in part of these promotional materials without the prior written authorization of Landmark Group of Companies Inc. is strictly prohibited. Floor plans, specifications, pricing and dimensions shown are approximate and subject to change without notice. Artist rendering shown. Interior room dimensions are taken from inside of walls. Garage dimensions are taken from outside of walls. Revised on 01/17/2025.

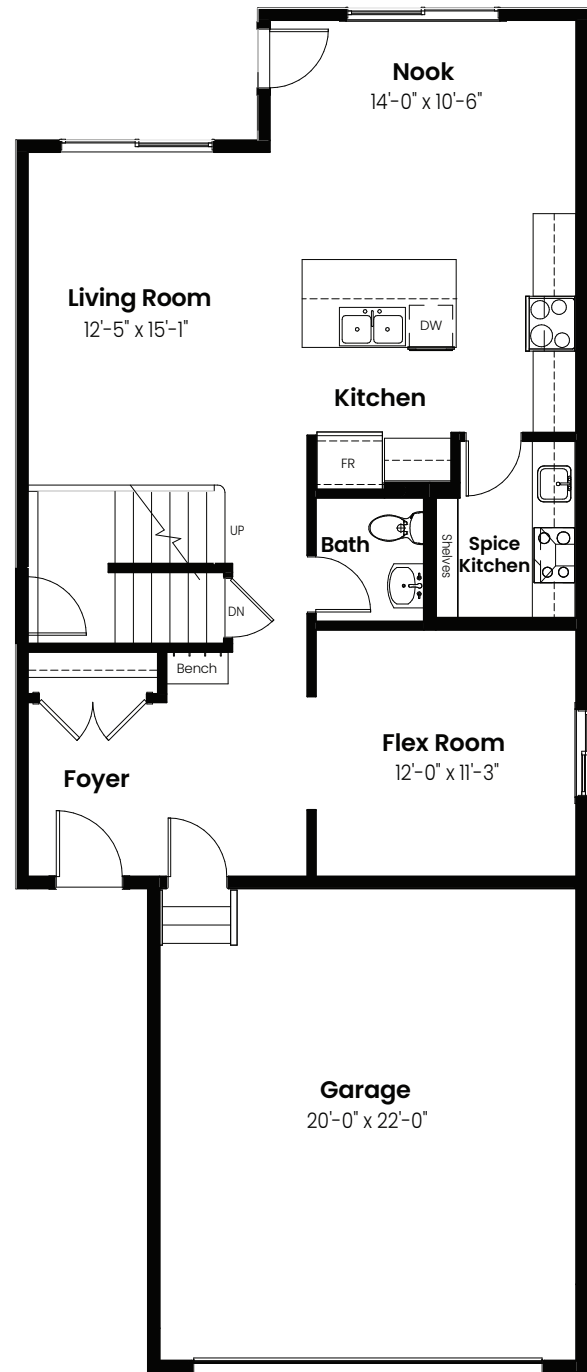
3 Beds | 2.5 Baths | 2,204 Sq. Ft. | 26' Wide

# Fuji

## Options



Main Floor Bedroom &  
Full Bath Option: 974 Sq Ft



Spice Kitchen Option: 974 Sq Ft

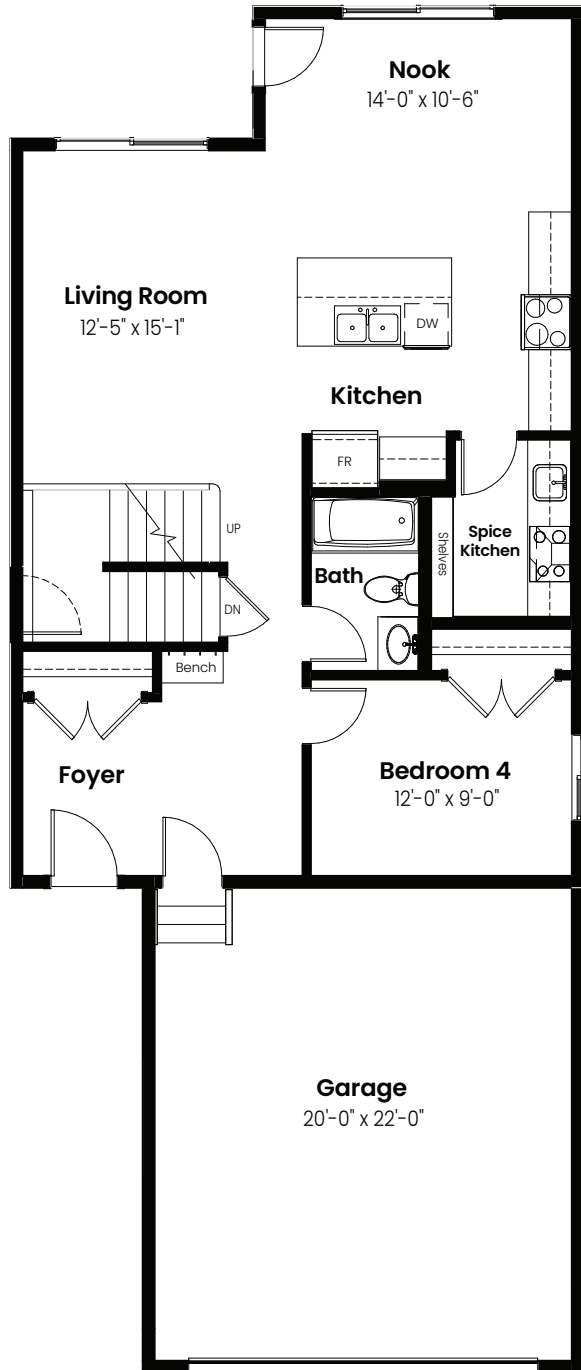


© 2025 Landmark Group of Companies Inc. All rights reserved. Any use or reproduction in whole or in part of these promotional materials without the prior written authorization of Landmark Group of Companies Inc. is strictly prohibited. Floor plans, specifications, pricing and dimensions shown are approximate and subject to change without notice. Artist rendering shown. Interior room dimensions are taken from inside of walls. Garage dimensions are taken from outside of walls. Revised on 01/17/2025.

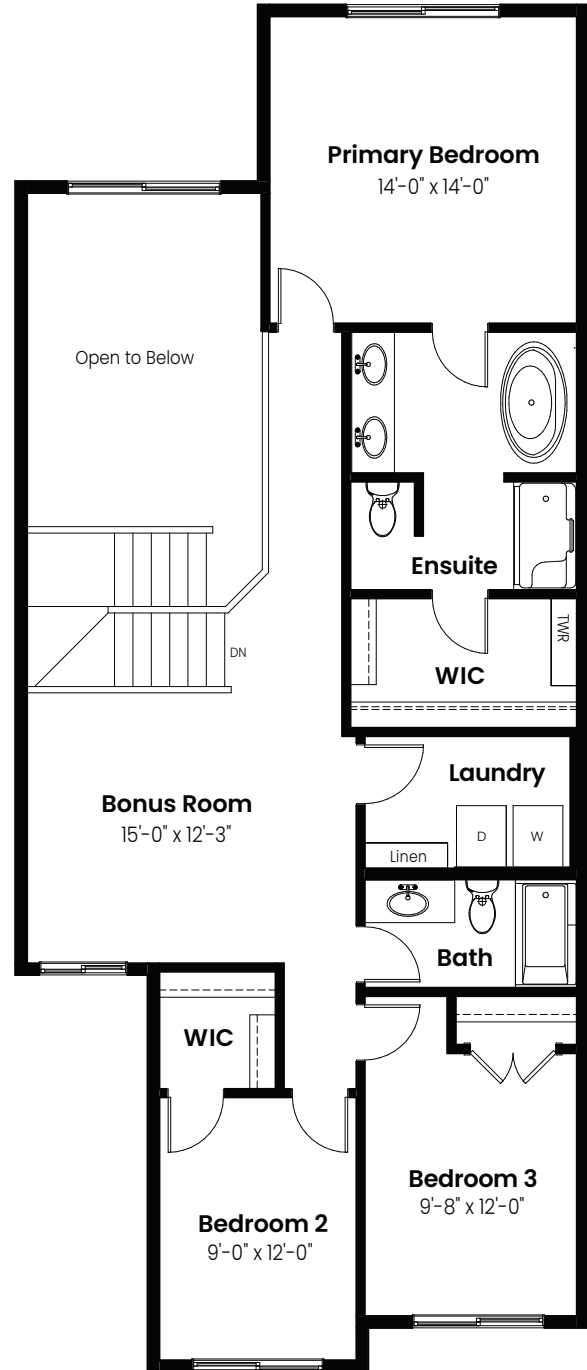
3 Beds | 2.5 Baths | 2,204 Sq. Ft. | 26' Wide

# Fuji

## Options



Full Bath, Main Floor Bedroom  
& Spice Kitchen Option: 974 Sq Ft



4 Piece Ensuite Option: 1230 Sq Ft

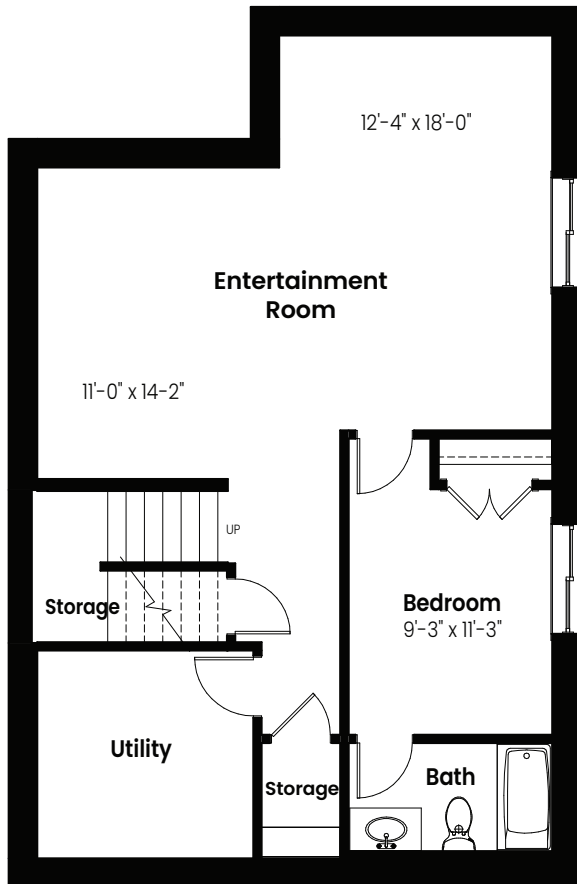


© 2025 Landmark Group of Companies Inc. All rights reserved. Any use or reproduction in whole or in part of these promotional materials without the prior written authorization of Landmark Group of Companies Inc. is strictly prohibited. Floor plans, specifications, pricing and dimensions shown are approximate and subject to change without notice. Artist rendering shown. Interior room dimensions are taken from inside of walls. Garage dimensions are taken from outside of walls. Revised on 01/17/2025.

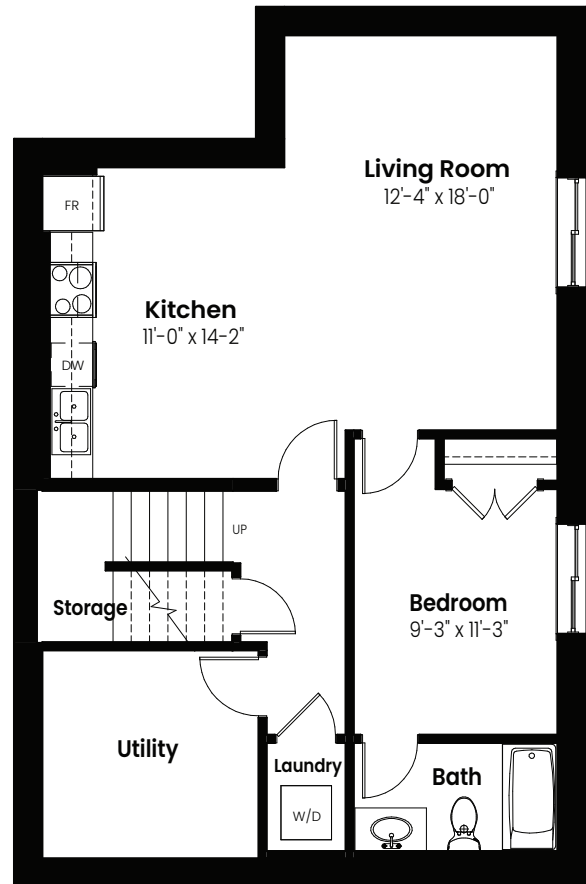
3 Beds | 2.5 Baths | 2,204 Sq. Ft. | 26' Wide

# Fuji

## Basement Options



Basement Development  
Option: 716 Sq Ft



Basement Suite Option: 716 Sq Ft



© 2025 Landmark Group of Companies Inc. All rights reserved. Any use or reproduction in whole or in part of these promotional materials without the prior written authorization of Landmark Group of Companies Inc. is strictly prohibited. Floor plans, specifications, pricing and dimensions shown are approximate and subject to change without notice. Artist rendering shown. Interior room dimensions are taken from inside of walls. Garage dimensions are taken from outside of walls. Revised on 01/17/2025.



3 Beds | 2.5 Baths | 2,204 Sq. Ft. | 26' Wide

# Fuji

## Elevation



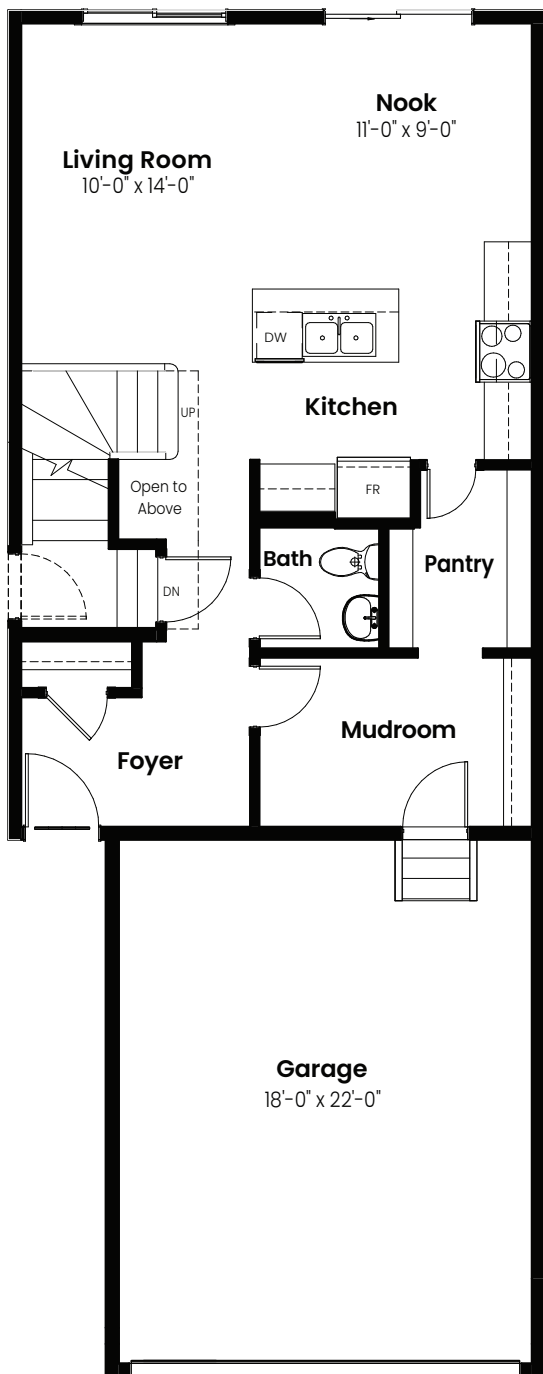
© 2025 Landmark Group of Companies Inc. All rights reserved. Any use or reproduction in whole or in part of these promotional materials without the prior written authorization of Landmark Group of Companies Inc. is strictly prohibited. Floor plans, specifications, pricing and dimensions shown are approximate and subject to change without notice. Artist rendering shown. Interior room dimensions are taken from inside of walls. Garage dimensions are taken from outside of walls. Revised on 01/17/2025.



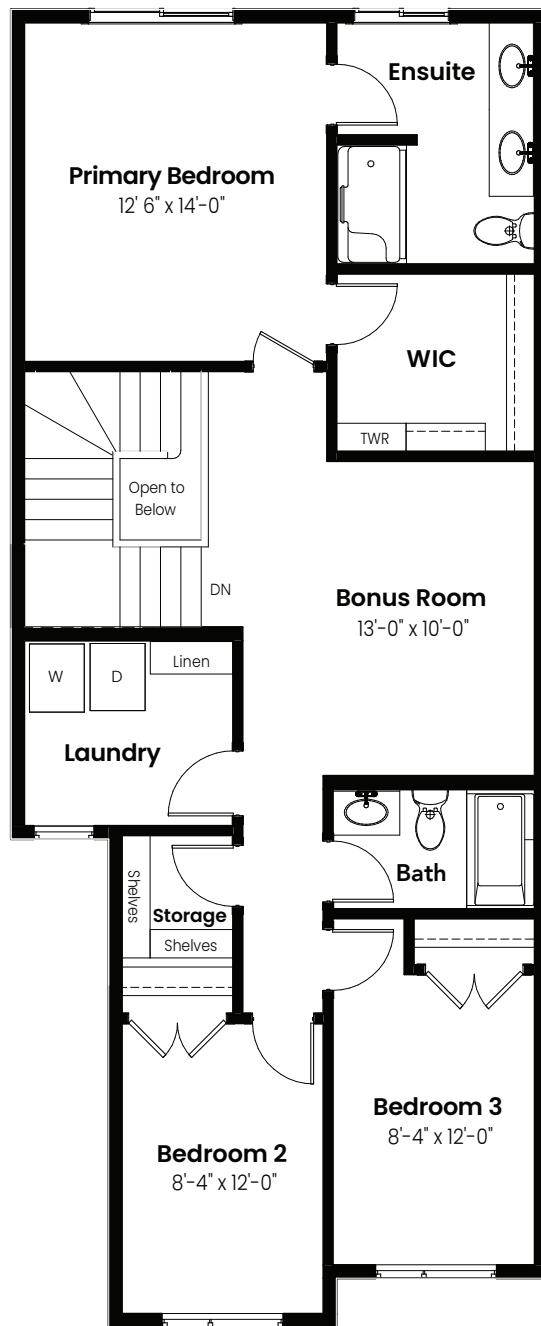
3 Bedrooms | 2.5 Bathrooms

# Lotus

**1,824 sqft**  
22' Wide



Main Floor: 748 Sq Ft



Second Floor: 1076 Sq Ft



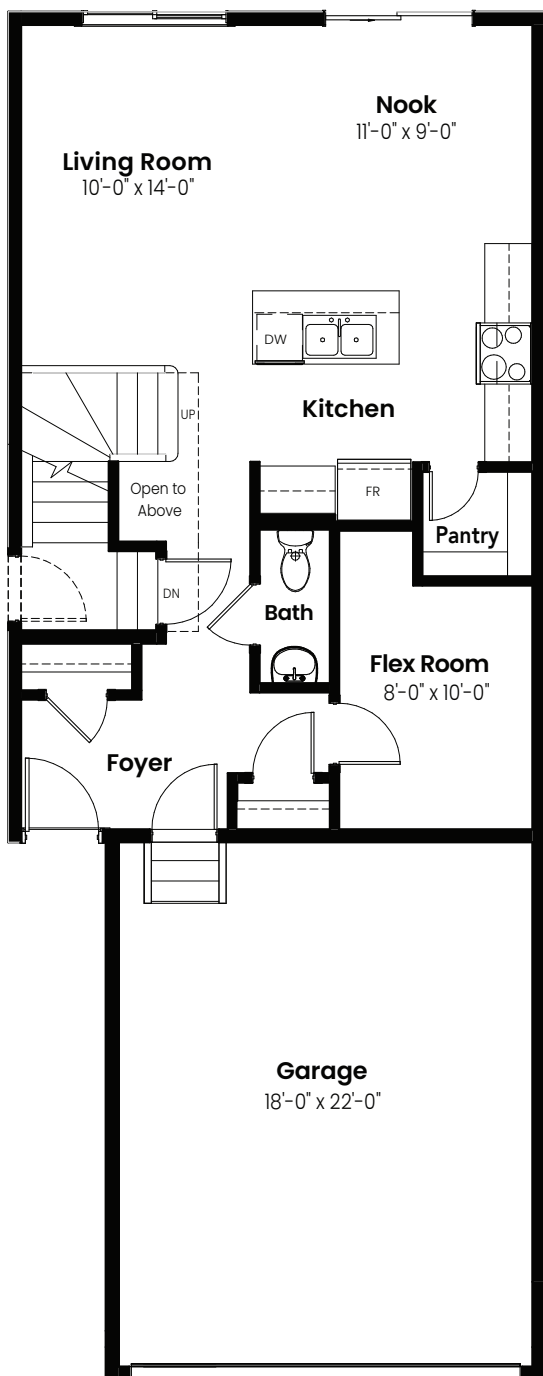
© 2025 Landmark Group of Companies Inc. All rights reserved. Any use or reproduction in whole or in part of these promotional materials without the prior written authorization of Landmark Group of Companies Inc. is strictly prohibited. Floor plans, specifications, pricing and dimensions shown are approximate and subject to change without notice. Artist rendering shown. Interior room dimensions are taken from inside of walls. Garage dimensions are taken from outside of walls. Revised on 01/17/2025.



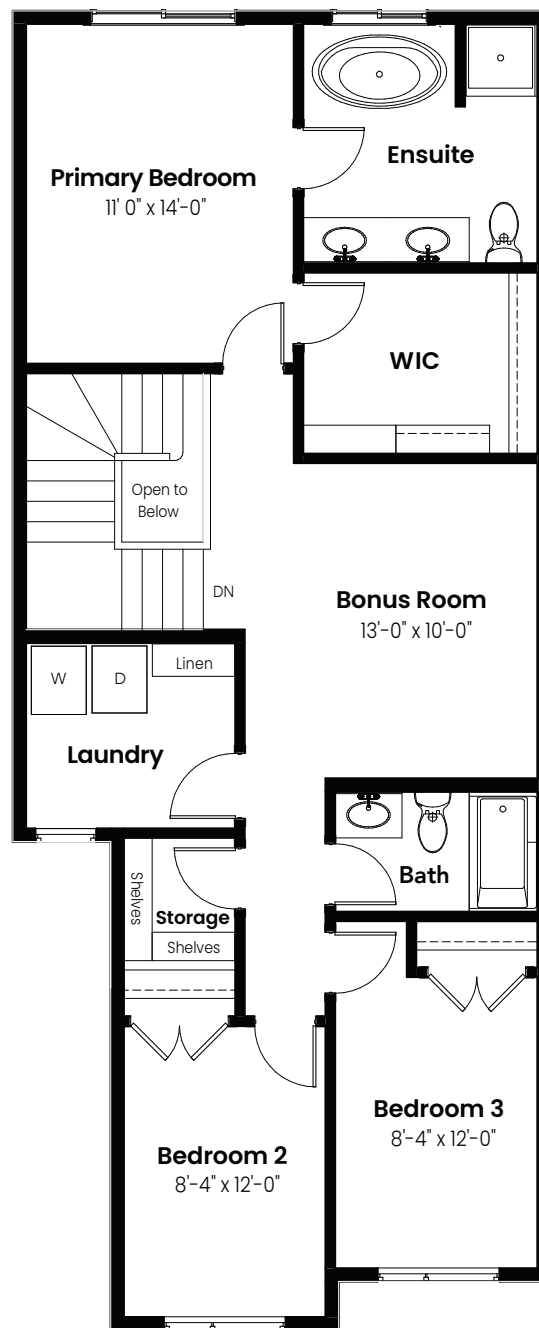
3 Beds | 2.5 Baths | 1,824 Sq. Ft. | 22' Wide

# Lotus

## Options



Flex Room Option: 748 Sq Ft



4 Piece Ensuite Option: 1076 Sq Ft

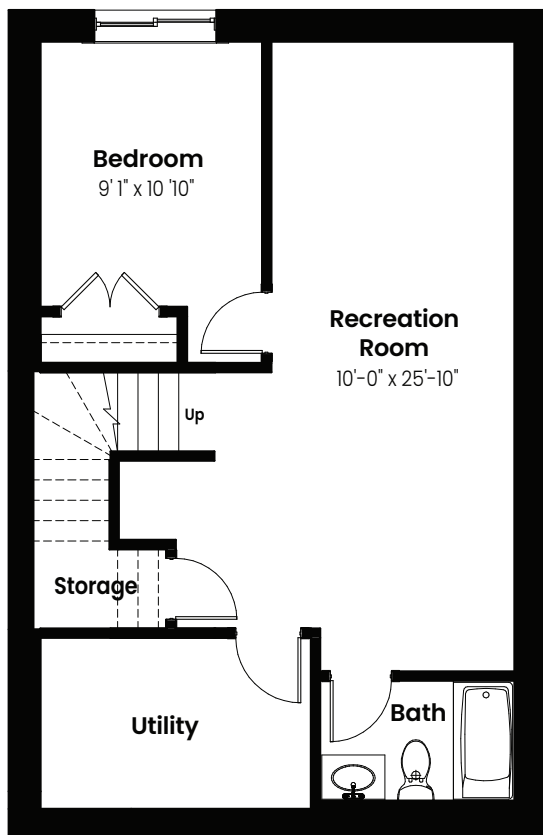


© 2025 Landmark Group of Companies Inc. All rights reserved. Any use or reproduction in whole or in part of these promotional materials without the prior written authorization of Landmark Group of Companies Inc. is strictly prohibited. Floor plans, specifications, pricing and dimensions shown are approximate and subject to change without notice. Artist rendering shown. Interior room dimensions are taken from inside of walls. Garage dimensions are taken from outside of walls. Revised on 01/17/2025.

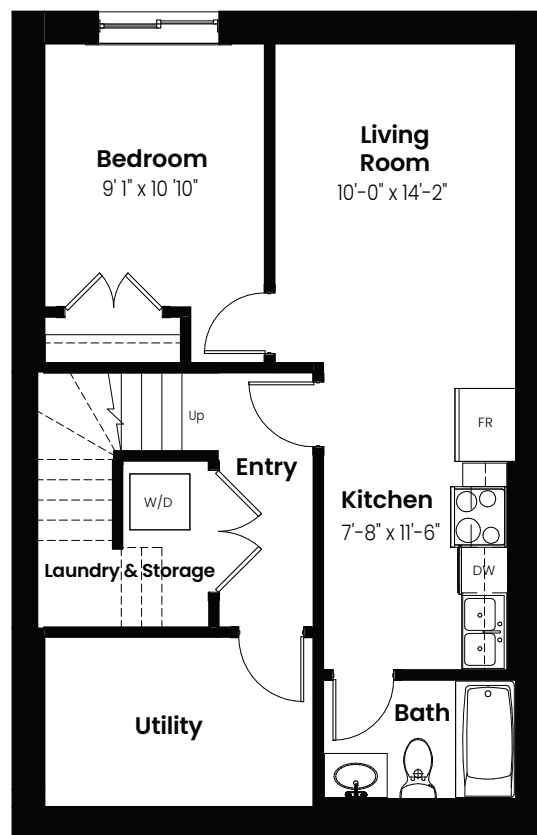
3 Beds | 2.5 Baths | 1,824 Sq. Ft. | 22' Wide

# Lotus

## Basement Options



Basement Development  
Option: 538 Sq Ft



Basement Suite Option: 538 Sq Ft



© 2025 Landmark Group of Companies Inc. All rights reserved. Any use or reproduction in whole or in part of these promotional materials without the prior written authorization of Landmark Group of Companies Inc. is strictly prohibited. Floor plans, specifications, pricing and dimensions shown are approximate and subject to change without notice. Artist rendering shown. Interior room dimensions are taken from inside of walls. Garage dimensions are taken from outside of walls. Revised on 01/17/2025.

3 Beds | 2.5 Baths | 1,824 Sq. Ft. | 22' Wide

# Lotus

## Elevation



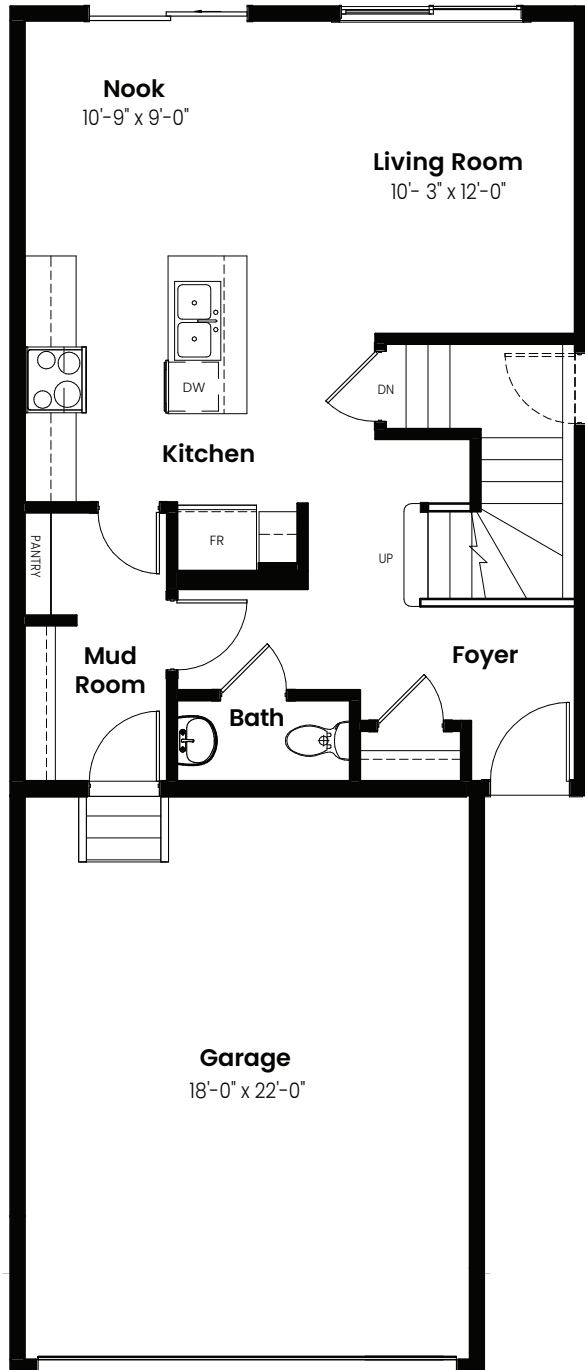
© 2025 Landmark Group of Companies Inc. All rights reserved. Any use or reproduction in whole or in part of these promotional materials without the prior written authorization of Landmark Group of Companies Inc. is strictly prohibited. Floor plans, specifications, pricing and dimensions shown are approximate and subject to change without notice. Artist rendering shown. Interior room dimensions are taken from inside of walls. Garage dimensions are taken from outside of walls. Revised on 01/17/2025.

3 Bedrooms | 2.5 Bathrooms

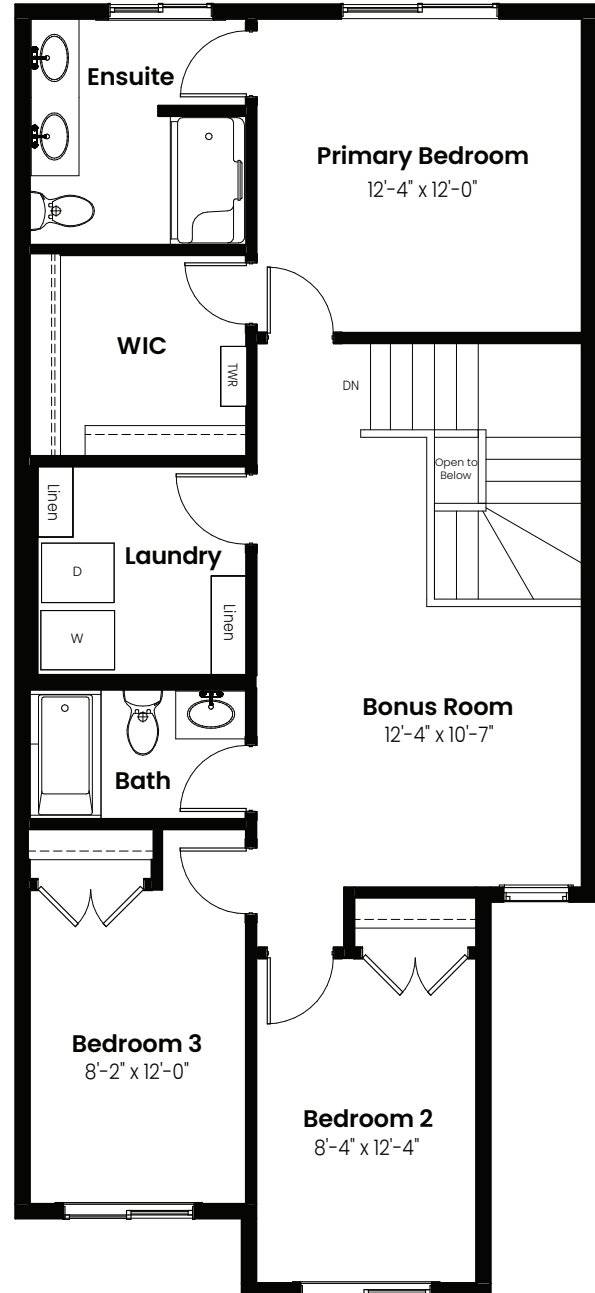
# Louvre

# 1,649 sqft

22' Wide



Main Floor: 660 Sq Ft



Second Floor: 979 Sq Ft

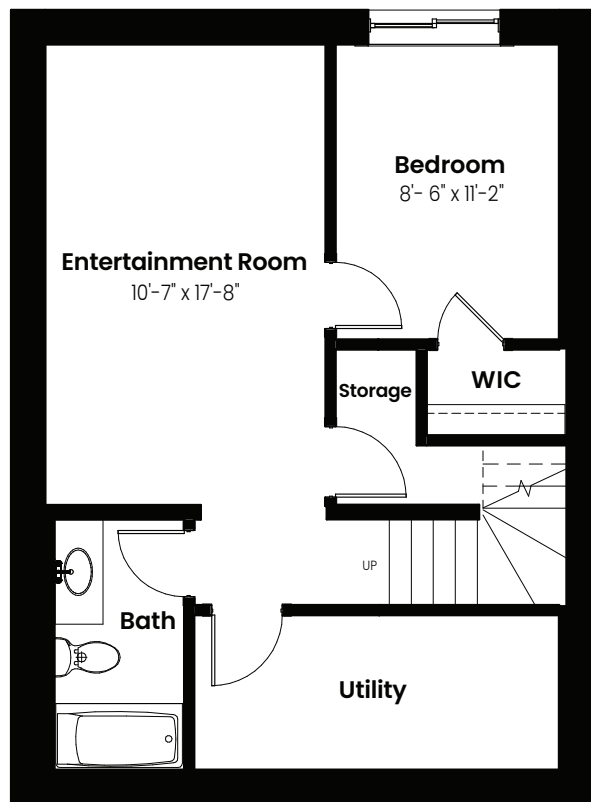


© 2024 Landmark Group of Companies Inc. All rights reserved. Any use or reproduction in whole or in part of these promotional materials without the prior written authorization of Landmark Group of Companies Inc. is strictly prohibited. Floor plans, specifications, pricing and dimensions shown are approximate and subject to change without notice. Artist rendering shown. Interior room dimensions are taken from inside of walls. Garage dimensions are taken from outside of walls. Revised on 09/03/2024.

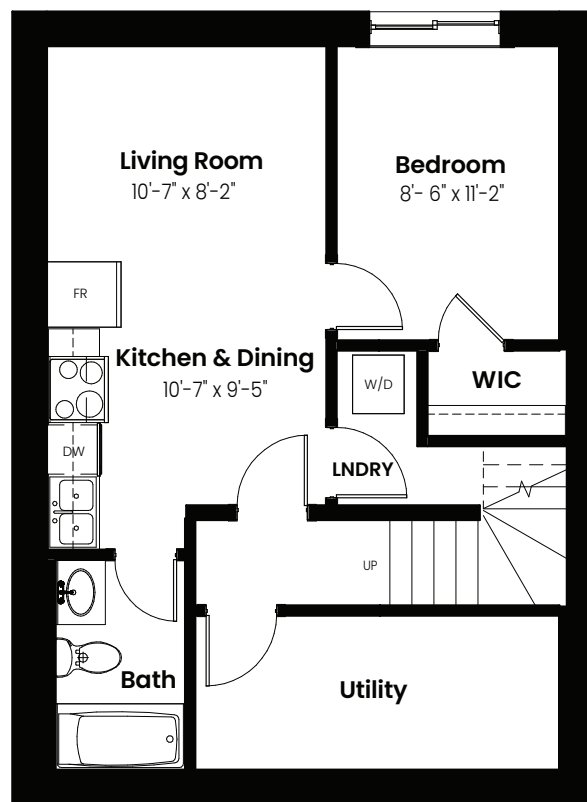
3 Beds | 2.5 Baths | 1,649 Sq. Ft. | 22' Wide

# Louvre

## Basement Options



Basement Development  
Option: 463 Sq Ft



Basement Suite Option: 463 Sq Ft



© 2024 Landmark Group of Companies Inc. All rights reserved. Any use or reproduction in whole or in part of these promotional materials without the prior written authorization of Landmark Group of Companies Inc. is strictly prohibited. Floor plans, specifications, pricing and dimensions shown are approximate and subject to change without notice. Artist rendering shown. Interior room dimensions are taken from inside of walls. Garage dimensions are taken from outside of walls. Revised on 09/03/2024.



3 Beds | 2.5 Baths | 1,649 Sq. Ft. | 22' Wide

# Louvre

## Elevation



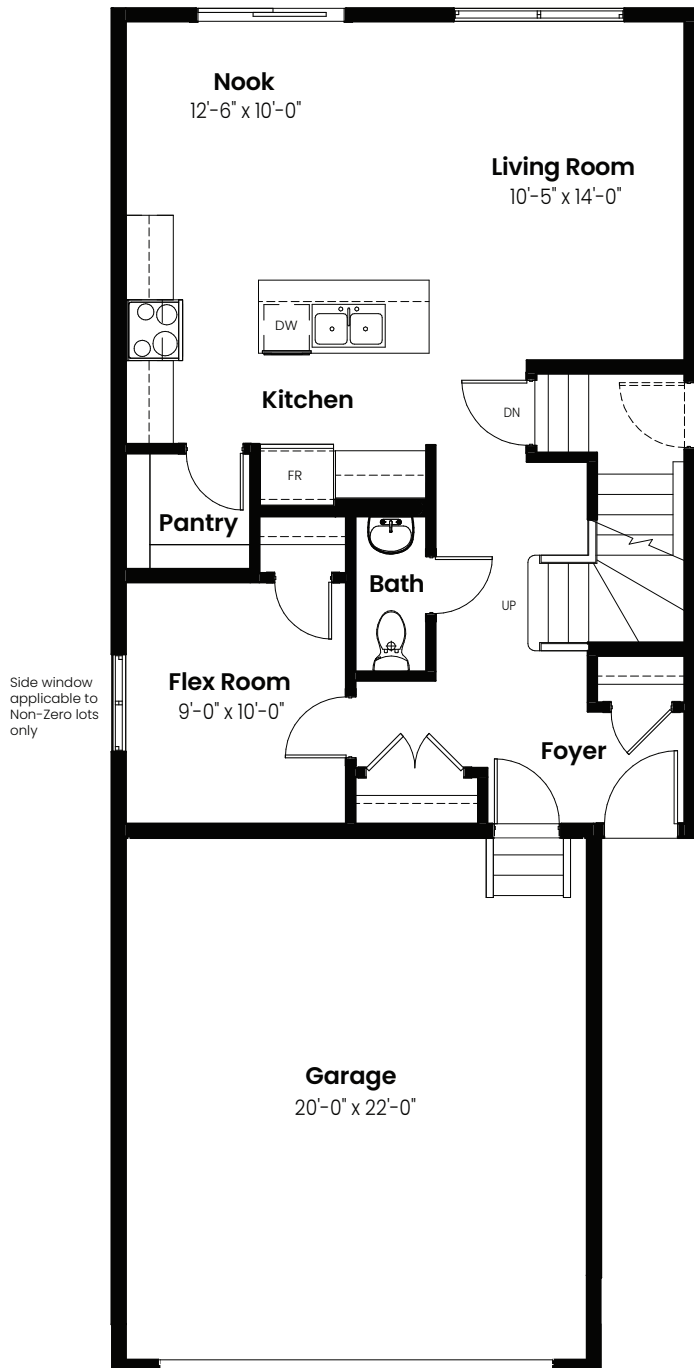
© 2024 Landmark Group of Companies Inc. All rights reserved. Any use or reproduction in whole or in part of these promotional materials without the prior written authorization of Landmark Group of Companies Inc. is strictly prohibited. Floor plans, specifications, pricing and dimensions shown are approximate and subject to change without notice. Artist rendering shown. Interior room dimensions are taken from inside of walls. Garage dimensions are taken from outside of walls. Revised on 09/03/2024.

3 Bedrooms | 2.5 Bathrooms

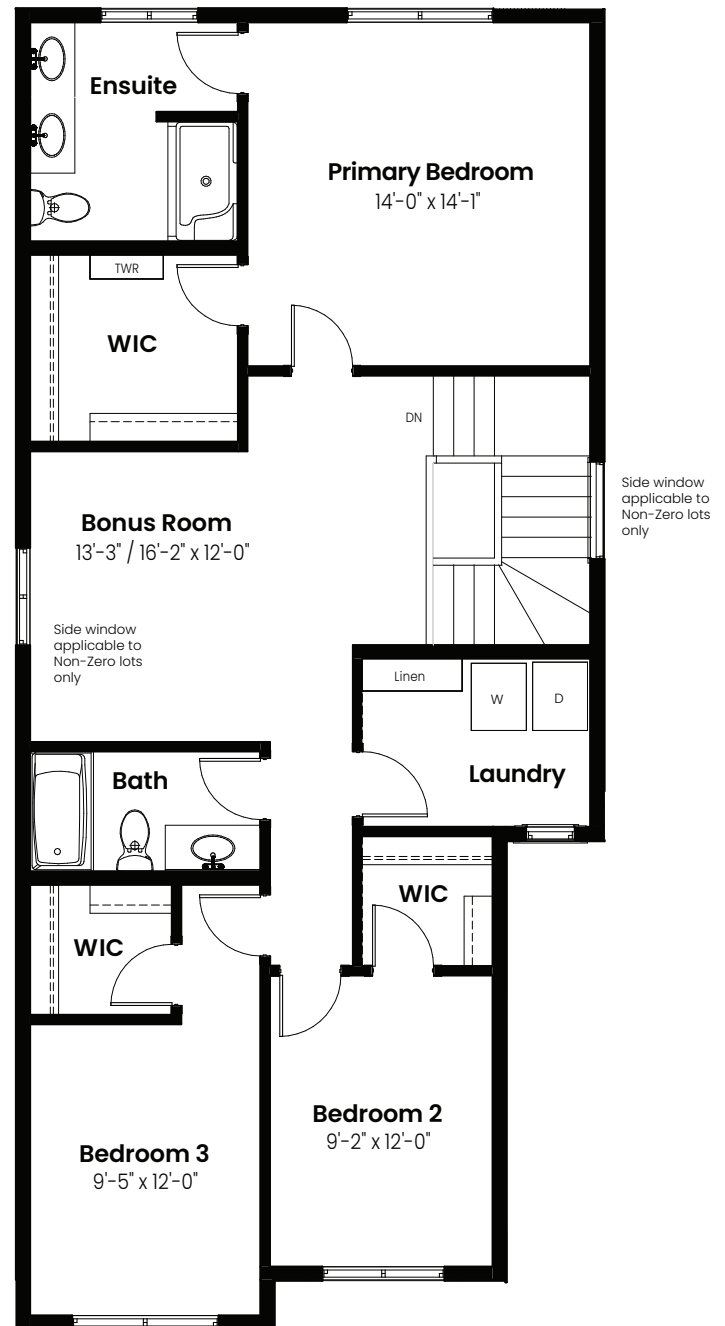
# Nile

# 2,004 sqft

## 24' Wide



Main Floor: 816 Sq Ft



Second Floor: 1187 Sq Ft

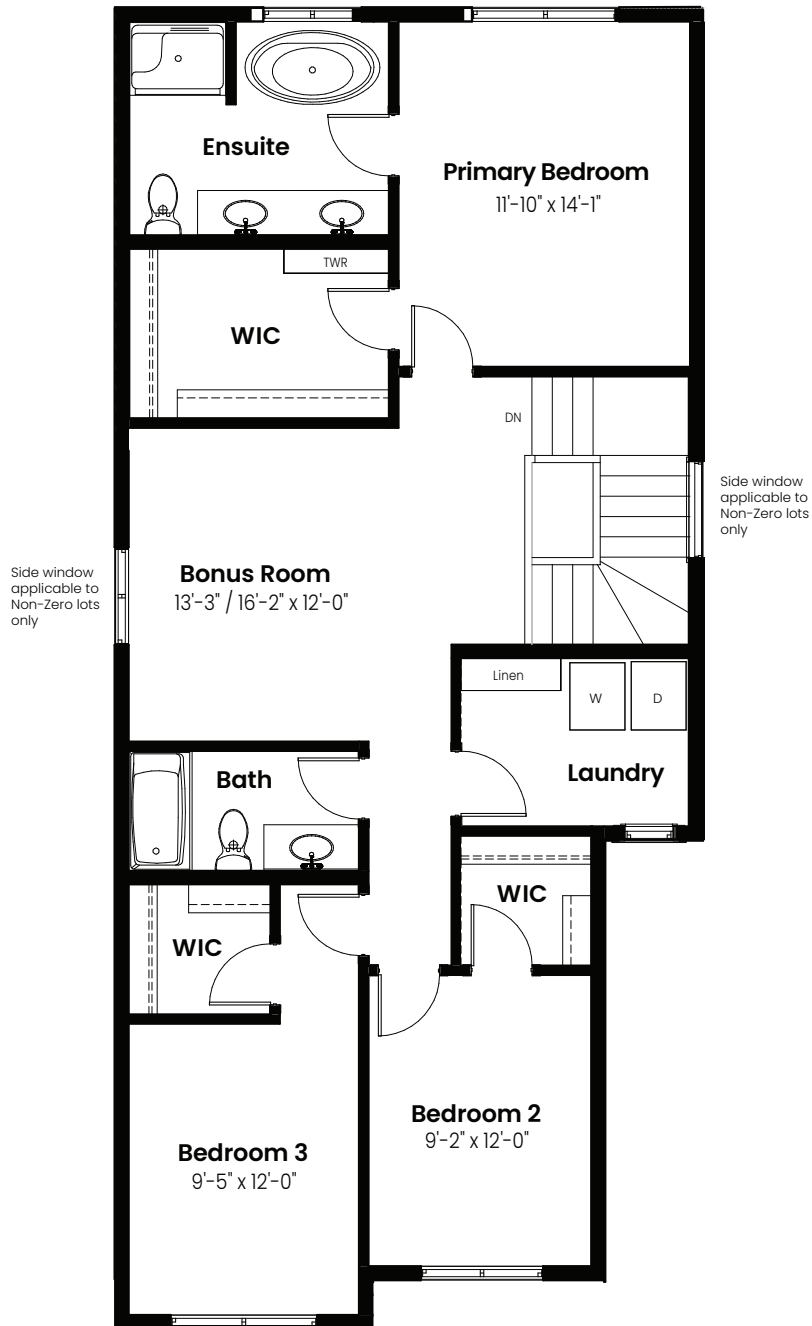


© 2025 Landmark Group of Companies Inc. All rights reserved. Any use or reproduction in whole or in part of these promotional materials without the prior written authorization of Landmark Group of Companies Inc. is strictly prohibited. Floor plans, specifications, pricing and dimensions shown are approximate and subject to change without notice. Artist rendering shown. Interior room dimensions are taken from inside of walls. Garage dimensions are taken from outside of walls. Revised on 01/17/2025.

3 Beds | 2.5 Baths | 2,004 Sq. Ft. | 24' Wide

# Nile

## Options



4 Piece Ensuite Option: 1187 Sq Ft



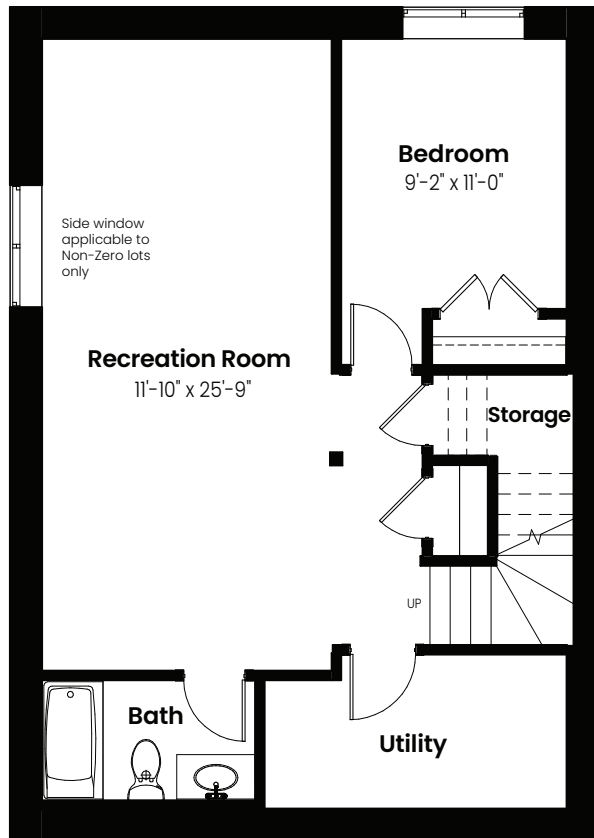
© 2025 Landmark Group of Companies Inc. All rights reserved. Any use or reproduction in whole or in part of these promotional materials without the prior written authorization of Landmark Group of Companies Inc. is strictly prohibited. Floor plans, specifications, pricing and dimensions shown are approximate and subject to change without notice. Artist rendering shown. Interior room dimensions are taken from inside of walls. Garage dimensions are taken from outside of walls. Revised on 01/17/2025.



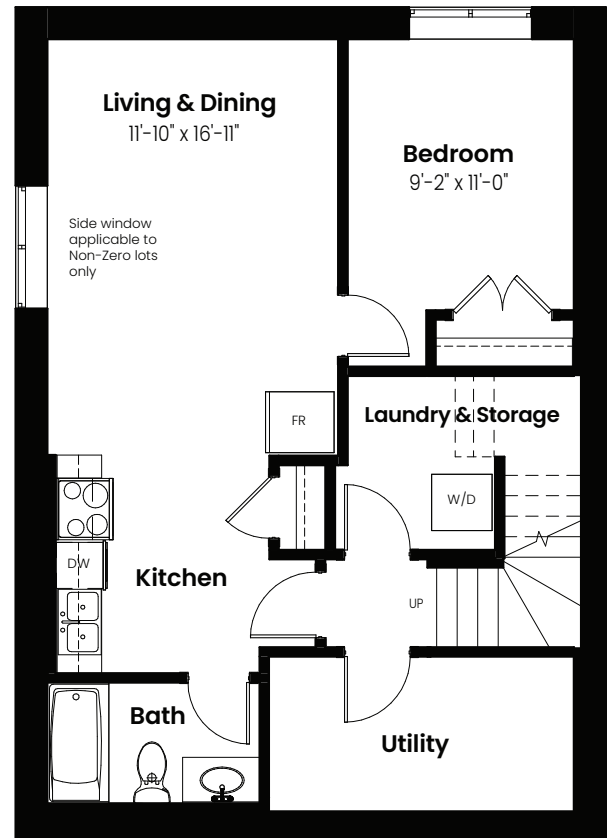
3 Beds | 2.5 Baths | 2,004 Sq. Ft. | 24' Wide

# Nile

## Basement Options



Basement Development  
Option: 610 Sq Ft



Basement Suite Option: 610 Sq Ft



© 2025 Landmark Group of Companies Inc. All rights reserved. Any use or reproduction in whole or in part of these promotional materials without the prior written authorization of Landmark Group of Companies Inc. is strictly prohibited. Floor plans, specifications, pricing and dimensions shown are approximate and subject to change without notice. Artist rendering shown. Interior room dimensions are taken from inside of walls. Garage dimensions are taken from outside of walls. Revised on 01/17/2025.

3 Beds | 2.5 Baths | 2,004 Sq. Ft. | 24' Wide

# Nile

## Elevation



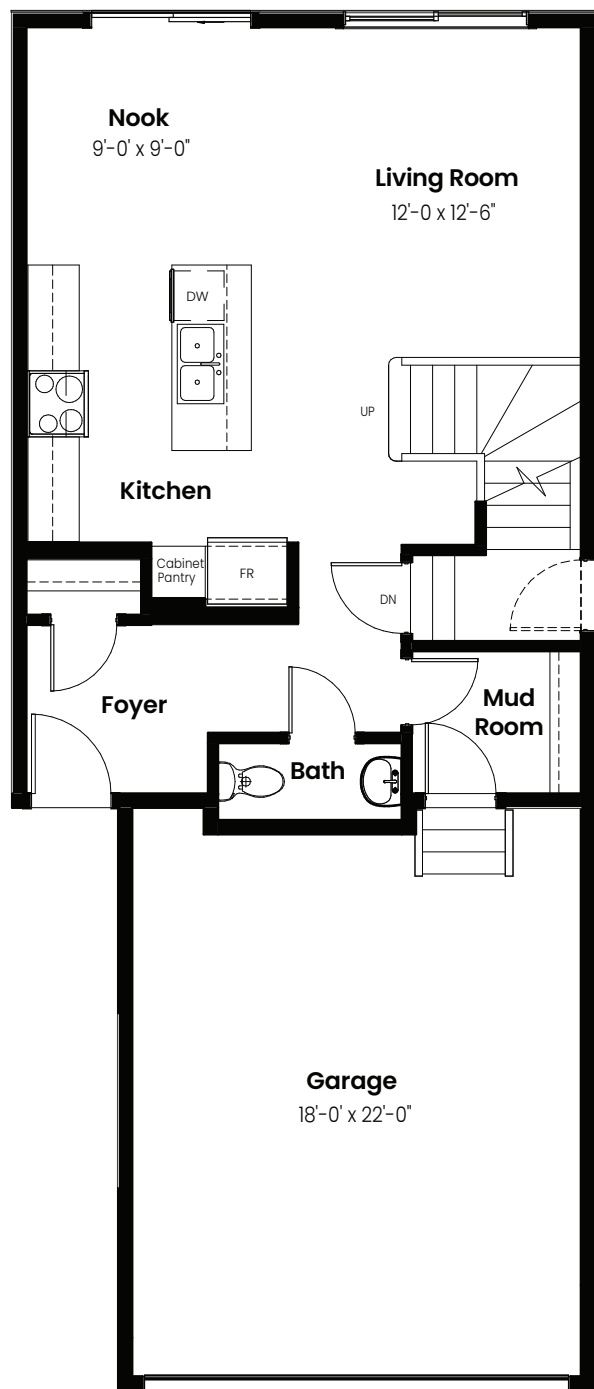
© 2025 Landmark Group of Companies Inc. All rights reserved. Any use or reproduction in whole or in part of these promotional materials without the prior written authorization of Landmark Group of Companies Inc. is strictly prohibited. Floor plans, specifications, pricing and dimensions shown are approximate and subject to change without notice. Artist rendering shown. Interior room dimensions are taken from inside of walls. Garage dimensions are taken from outside of walls. Revised on 01/17/2025.

3 Bedrooms | 2.5 Bathrooms

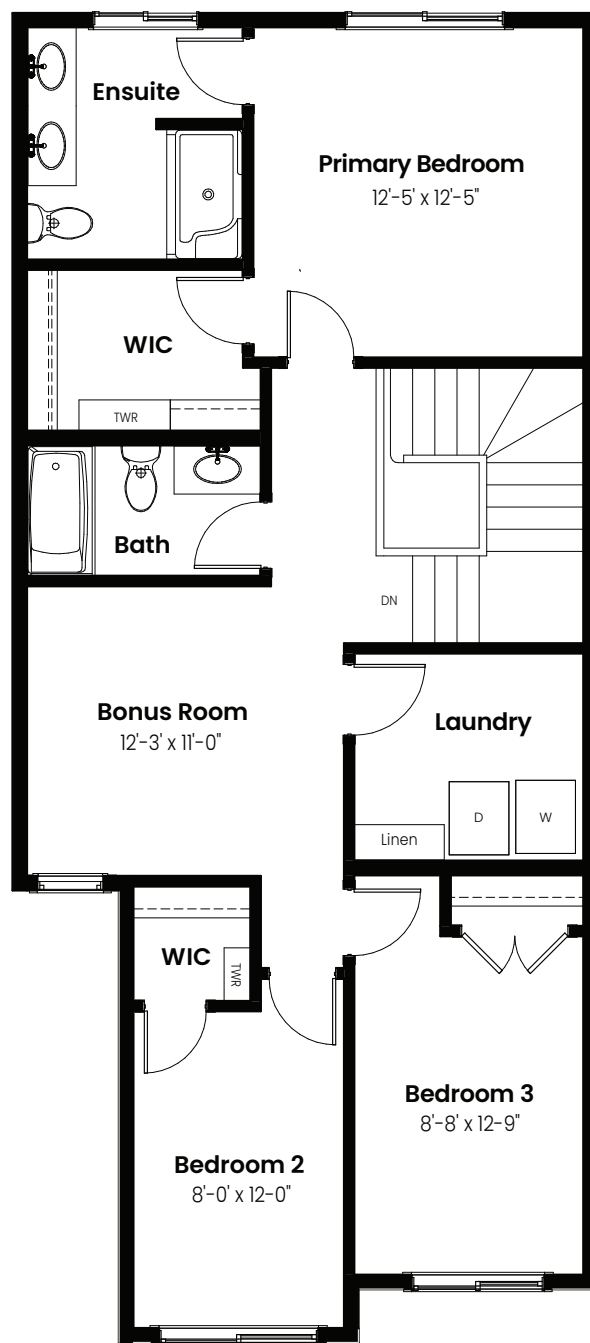
# Opera

1,670 sqft

22' Wide



Main Floor: 668 Sq Ft



Second Floor: 1002 Sq Ft



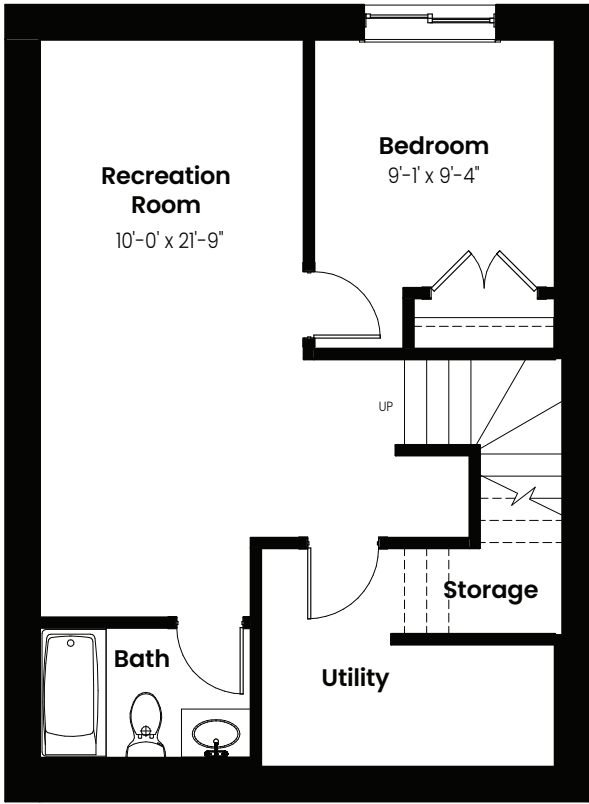
© 2025 Landmark Group of Companies Inc. All rights reserved. Any use or reproduction in whole or in part of these promotional materials without the prior written authorization of Landmark Group of Companies Inc. is strictly prohibited. Floor plans, specifications, pricing and dimensions shown are approximate and subject to change without notice. Artist rendering shown. Interior room dimensions are taken from inside of walls. Garage dimensions are taken from outside of walls. Revised on 01/17/2025.



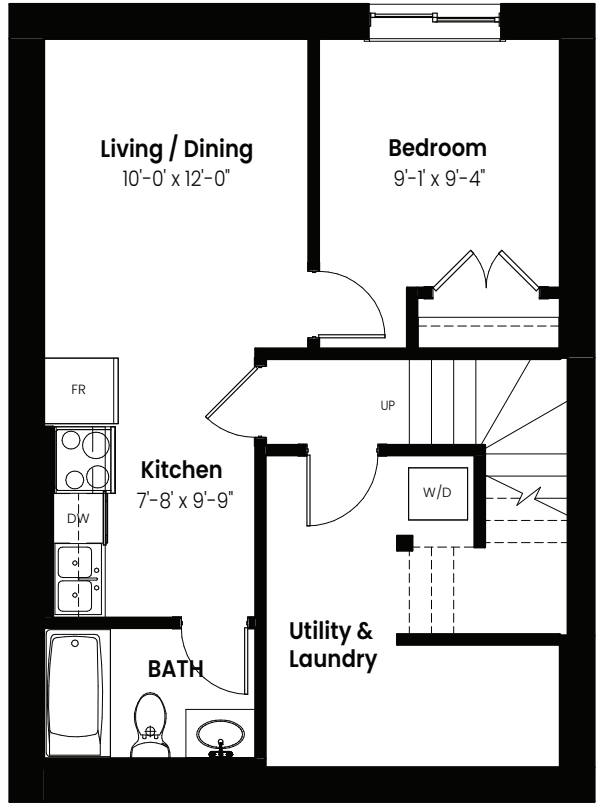
3 Beds | 2.5 Baths | 1,670 Sq. Ft. | 22' Wide

# Opera

# Basement Options



Basement Development  
Option: 454 Sq Ft



Basement Suite Option: 454 Sq Ft



© 2025 Landmark Group of Companies Inc. All rights reserved. Any use or reproduction in whole or in part of these promotional materials without the prior written authorization of Landmark Group of Companies Inc. is strictly prohibited. Floor plans, specifications, pricing and dimensions shown are approximate and subject to change without notice. Artist rendering shown. Interior room dimensions are taken from inside of walls. Garage dimensions are taken from outside of walls. Revised on 01/17/2025.





3 Beds | 2.5 Baths | 1,670 Sq. Ft. | 22' Wide

# Opera

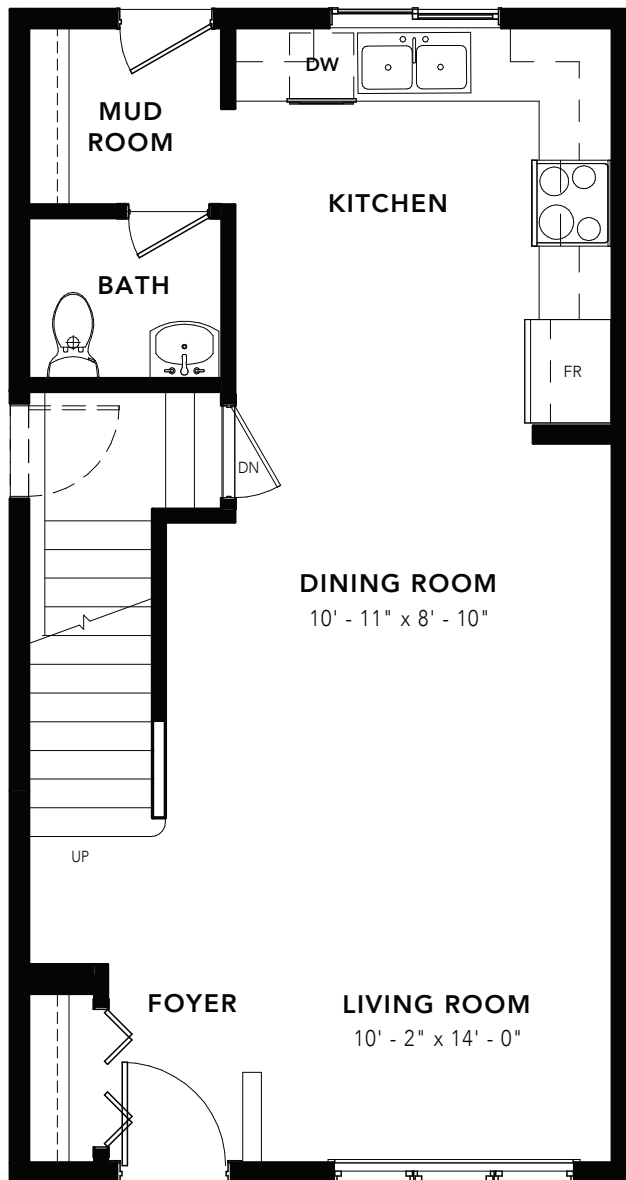
## Elevation



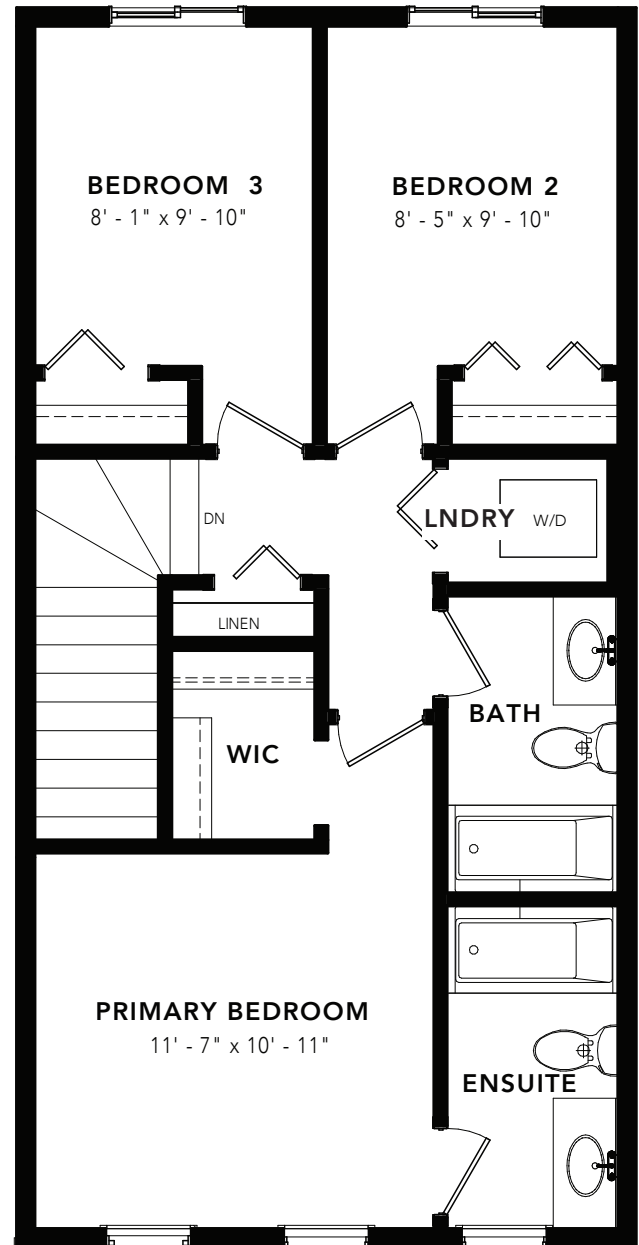
© 2025 Landmark Group of Companies Inc. All rights reserved. Any use or reproduction in whole or in part of these promotional materials without the prior written authorization of Landmark Group of Companies Inc. is strictly prohibited. Floor plans, specifications, pricing and dimensions shown are approximate and subject to change without notice. Artist rendering shown. Interior room dimensions are taken from inside of walls. Garage dimensions are taken from outside of walls. Revised on 01/17/2025.

# PALLADIO

3 BEDS 2.5 BATHS 1260 SQ FT 18' WIDE



MAIN FLOOR : 612 SQ FT

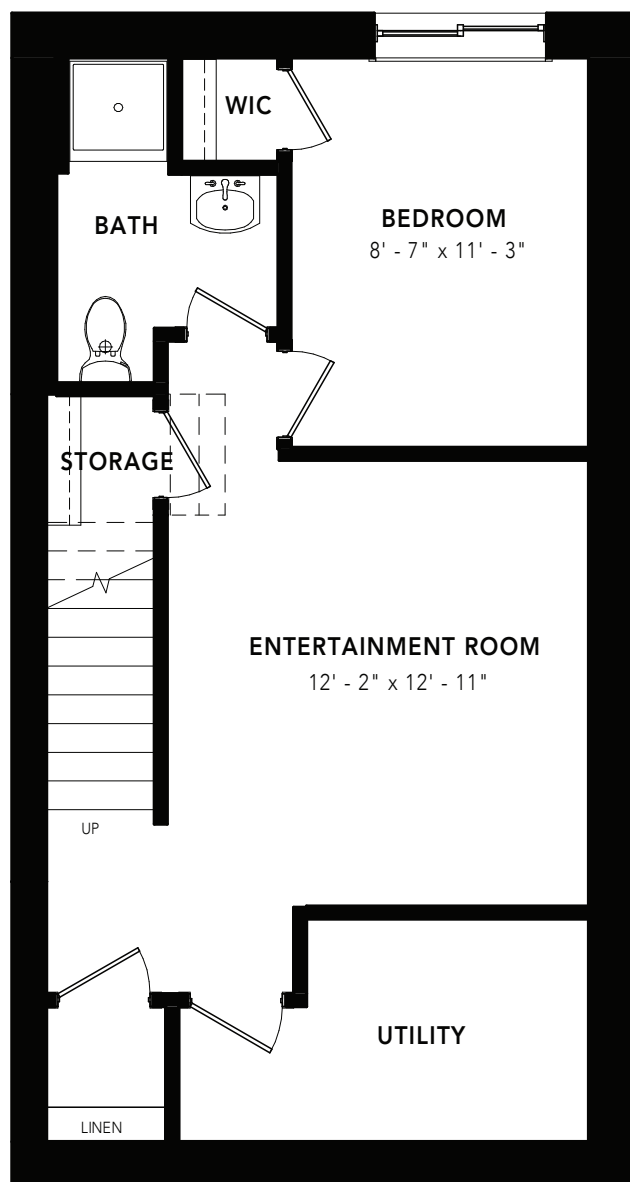


SECOND FLOOR: 648 SQ FT

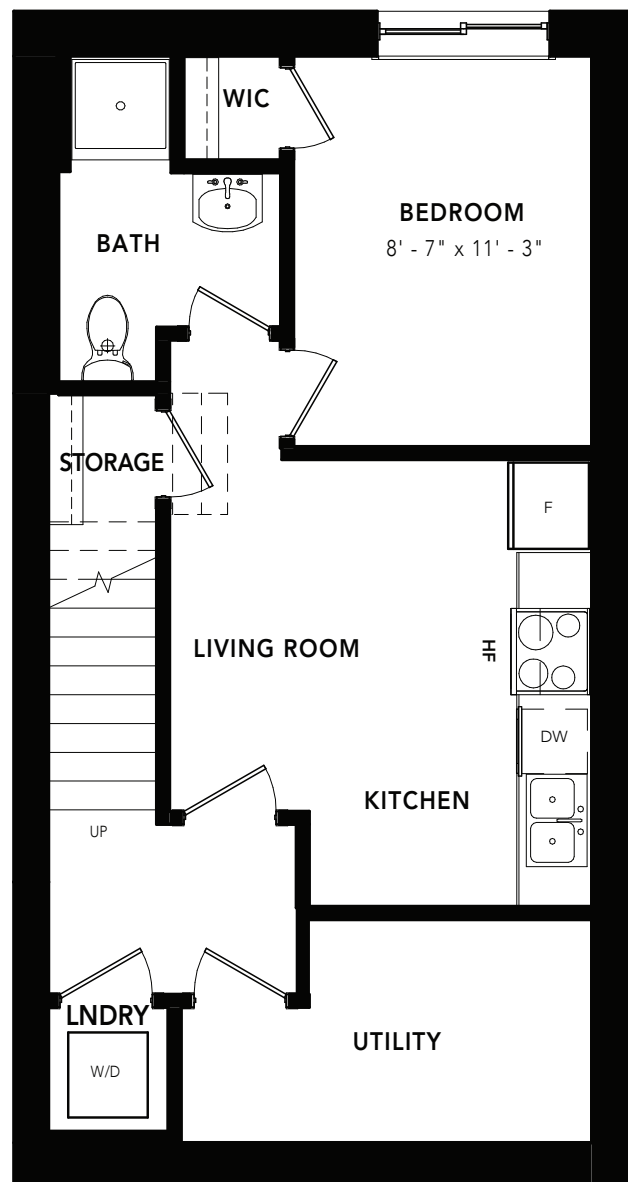
# PALLADIO

OPTIONS

3 BEDS 2.5 BATHS 1260 SQ FT 18' WIDE



BASEMENT DEVELOPMENT: 422 SQ FT



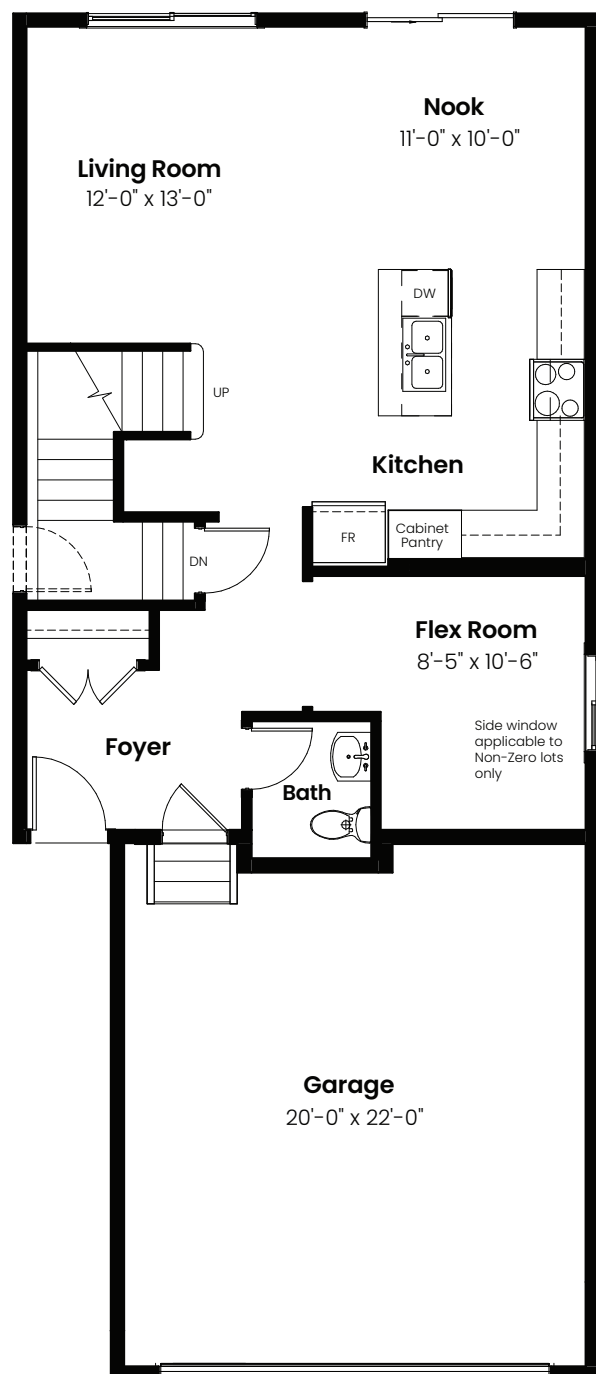
BASEMENT SUITE: 422 SQ FT

3 Bedrooms | 2.5 Bathrooms

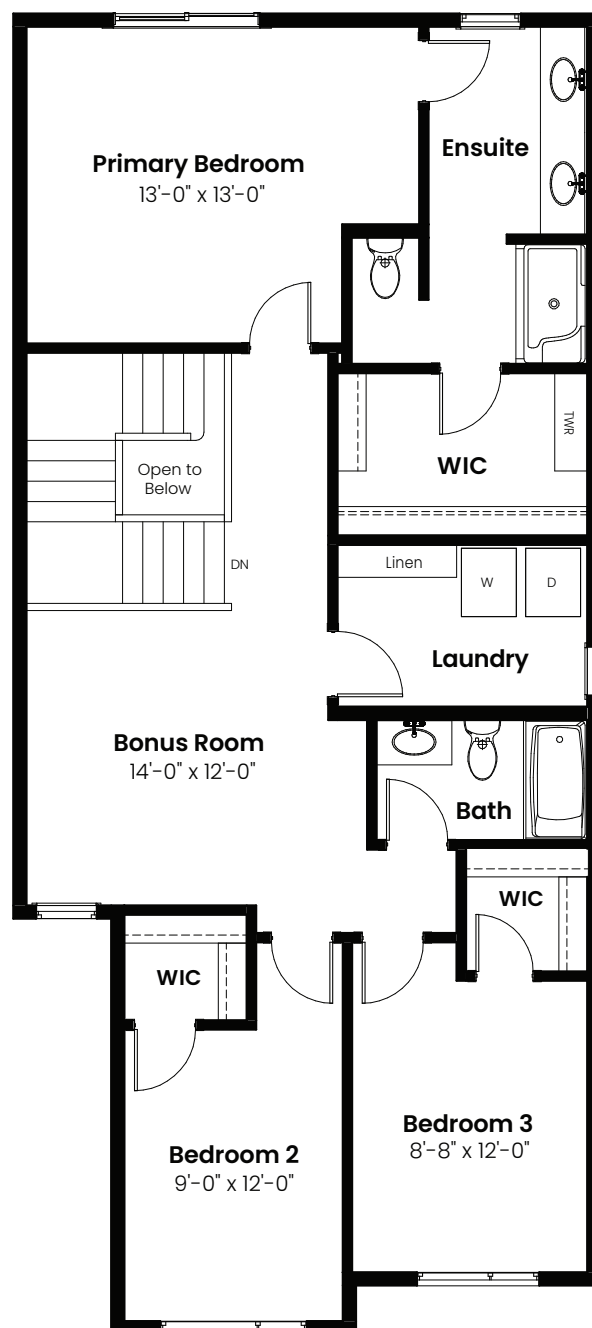
# Petra

2,016 sqft

24' Wide



Main Floor: 823 Sq Ft



Second Floor: 1193 Sq Ft



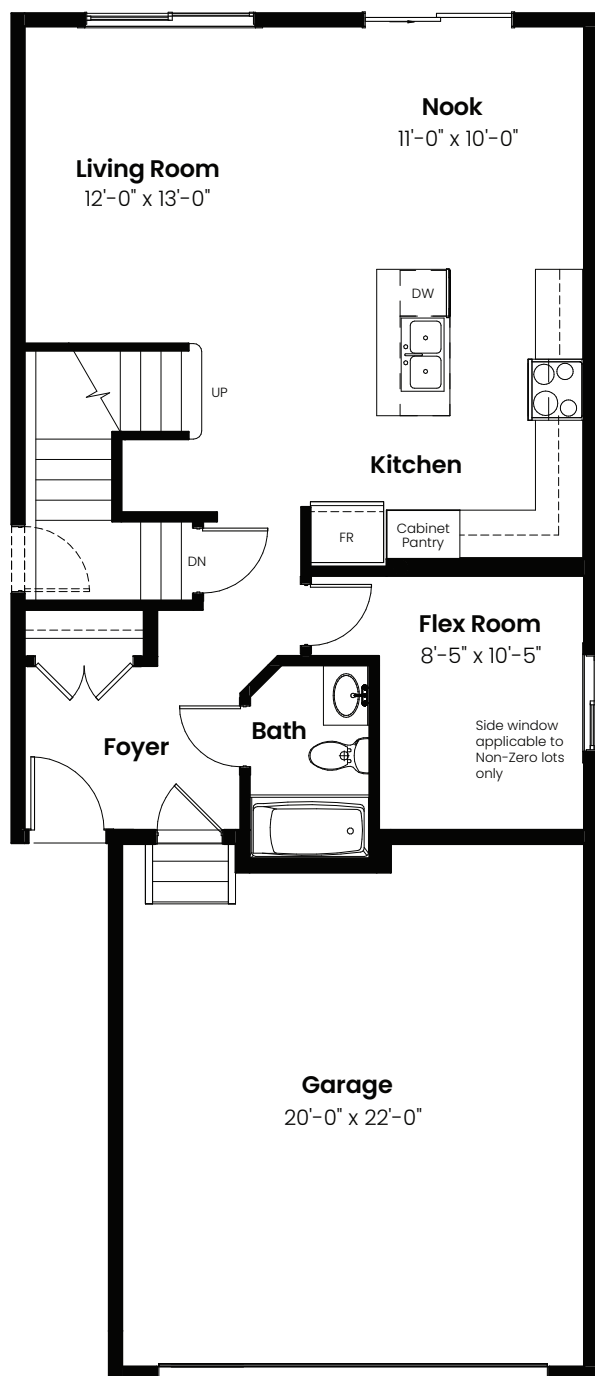
© 2025 Landmark Group of Companies Inc. All rights reserved. Any use or reproduction in whole or in part of these promotional materials without the prior written authorization of Landmark Group of Companies Inc. is strictly prohibited. Floor plans, specifications, pricing and dimensions shown are approximate and subject to change without notice. Artist rendering shown. Interior room dimensions are taken from inside of walls. Garage dimensions are taken from outside of walls. Revised on 01/17/2025.



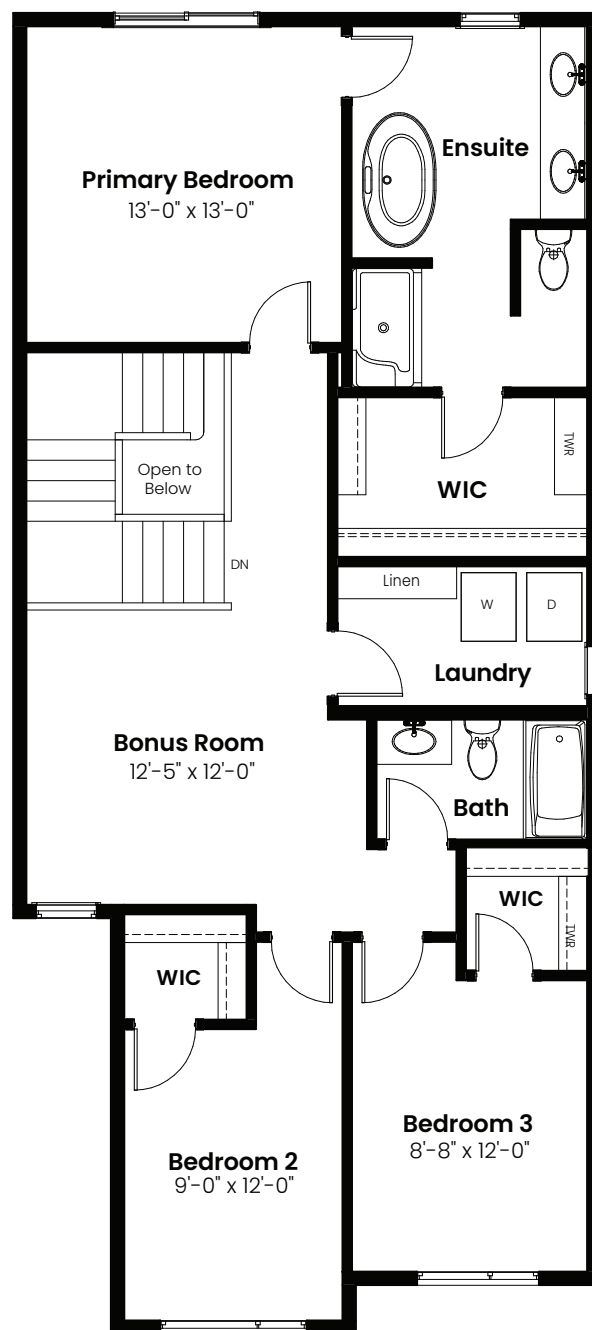
3 Beds | 2.5 Baths | 2,016 Sq. Ft. | 24' Wide

# Petra

## Options



Main Floor Bathroom Option: 823 Sq Ft



4 Piece Ensuite Option: 1193 Sq Ft

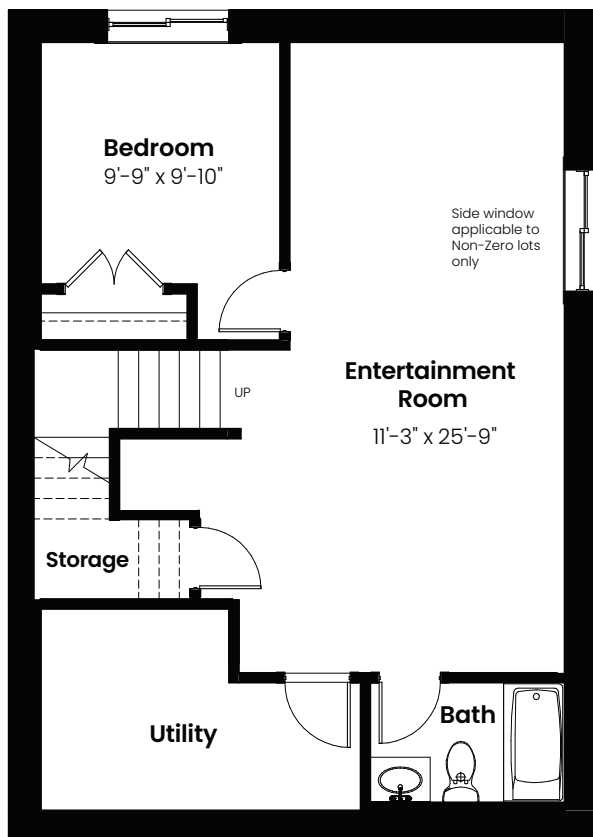


© 2025 Landmark Group of Companies Inc. All rights reserved. Any use or reproduction in whole or in part of these promotional materials without the prior written authorization of Landmark Group of Companies Inc. is strictly prohibited. Floor plans, specifications, pricing and dimensions shown are approximate and subject to change without notice. Artist rendering shown. Interior room dimensions are taken from inside of walls. Garage dimensions are taken from outside of walls. Revised on 01/17/2025.

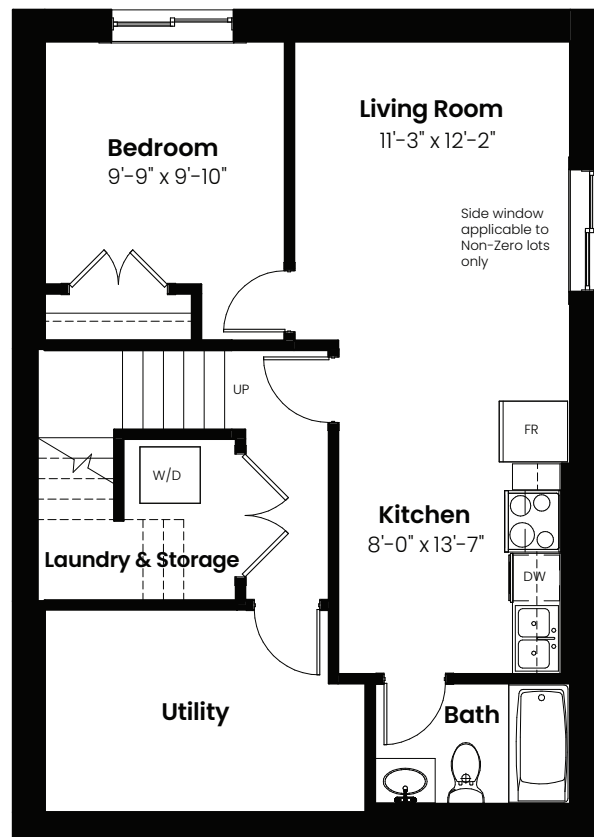
3 Beds | 2.5 Baths | 2,016 Sq. Ft. | 24' Wide

# Petra

## Basement Options



Basement Development  
Option: 570 Sq Ft



Basement Suite Option: 570 Sq Ft



© 2025 Landmark Group of Companies Inc. All rights reserved. Any use or reproduction in whole or in part of these promotional materials without the prior written authorization of Landmark Group of Companies Inc. is strictly prohibited. Floor plans, specifications, pricing and dimensions shown are approximate and subject to change without notice. Artist rendering shown. Interior room dimensions are taken from inside of walls. Garage dimensions are taken from outside of walls. Revised on 01/17/2025.

3 Beds | 2.5 Baths | 2,016 Sq. Ft. | 24' Wide

# Petra

## Elevation



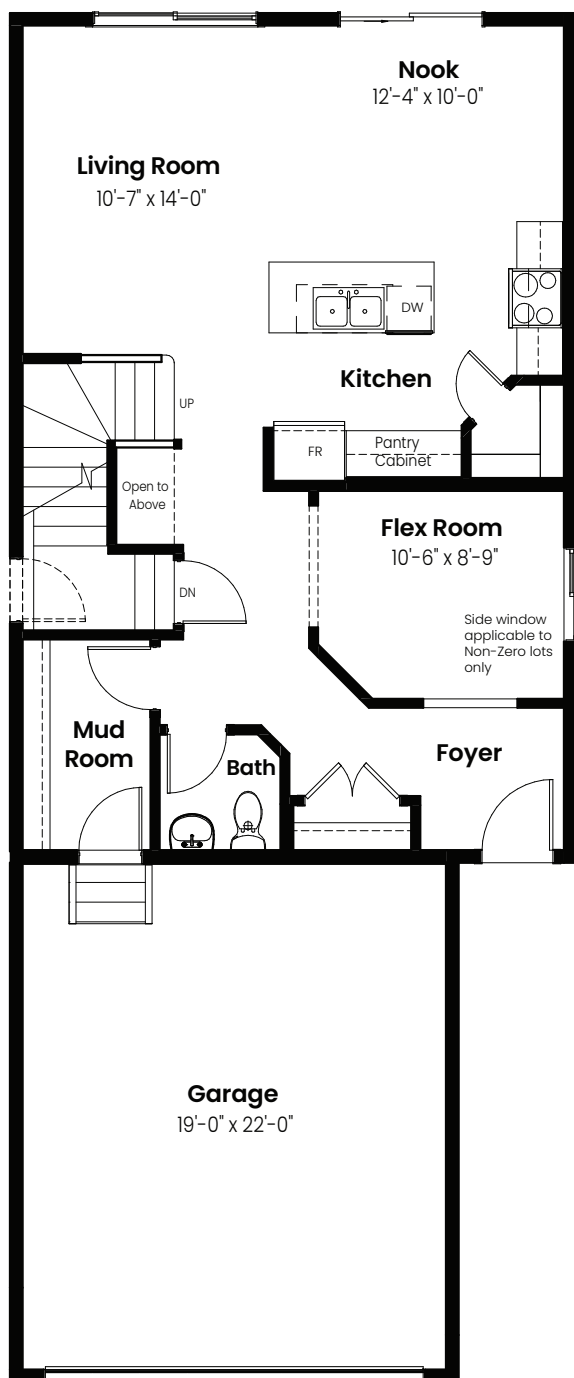
© 2025 Landmark Group of Companies Inc. All rights reserved. Any use or reproduction in whole or in part of these promotional materials without the prior written authorization of Landmark Group of Companies Inc. is strictly prohibited. Floor plans, specifications, pricing and dimensions shown are approximate and subject to change without notice. Artist rendering shown. Interior room dimensions are taken from inside of walls. Garage dimensions are taken from outside of walls. Revised on 01/17/2025.

3 Bedrooms | 2.5 Bathrooms

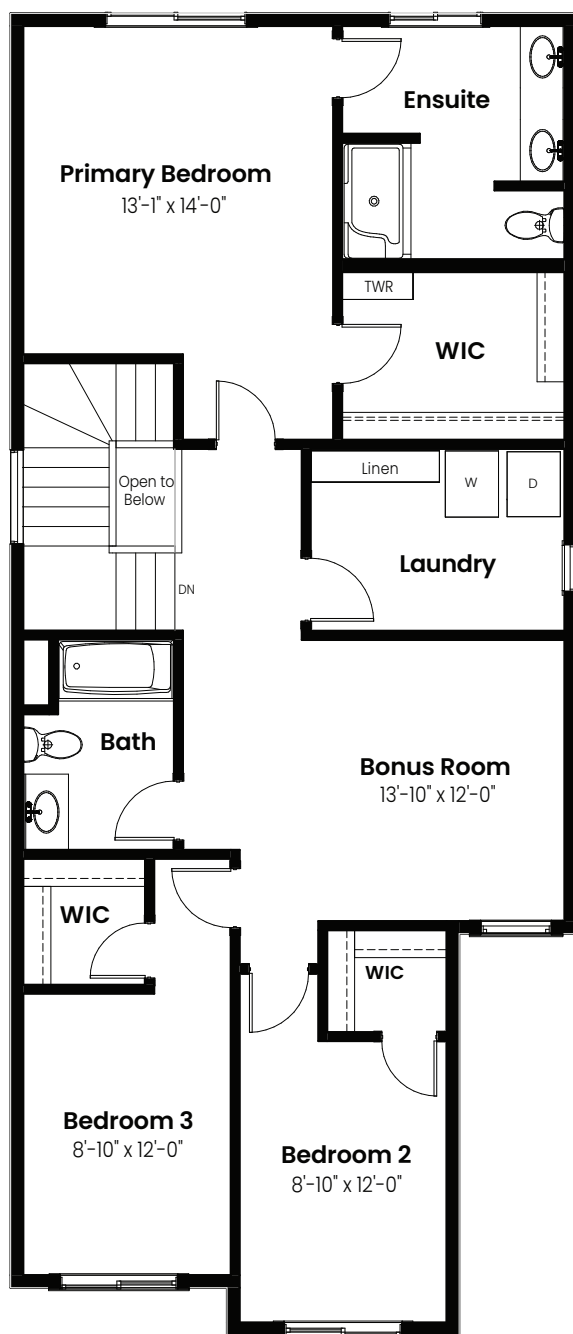
Pisa

2,094 sqft

24' Wide



Main Floor: 864 Sq Ft



Second Floor: 1230 Sq Ft



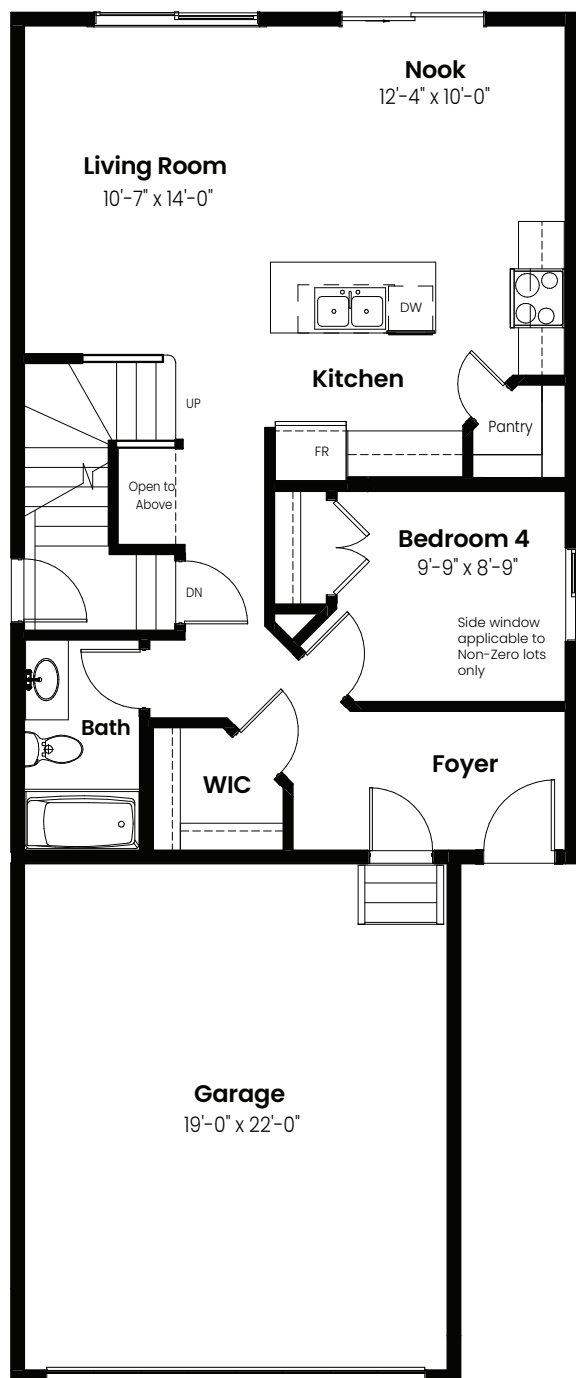
© 2025 Landmark Group of Companies Inc. All rights reserved. Any use or reproduction in whole or in part of these promotional materials without the prior written authorization of Landmark Group of Companies Inc. is strictly prohibited. Floor plans, specifications, pricing and dimensions shown are approximate and subject to change without notice. Artist rendering shown. Interior room dimensions are taken from inside of walls. Garage dimensions are taken from outside of walls. Revised on 01/13/2025.



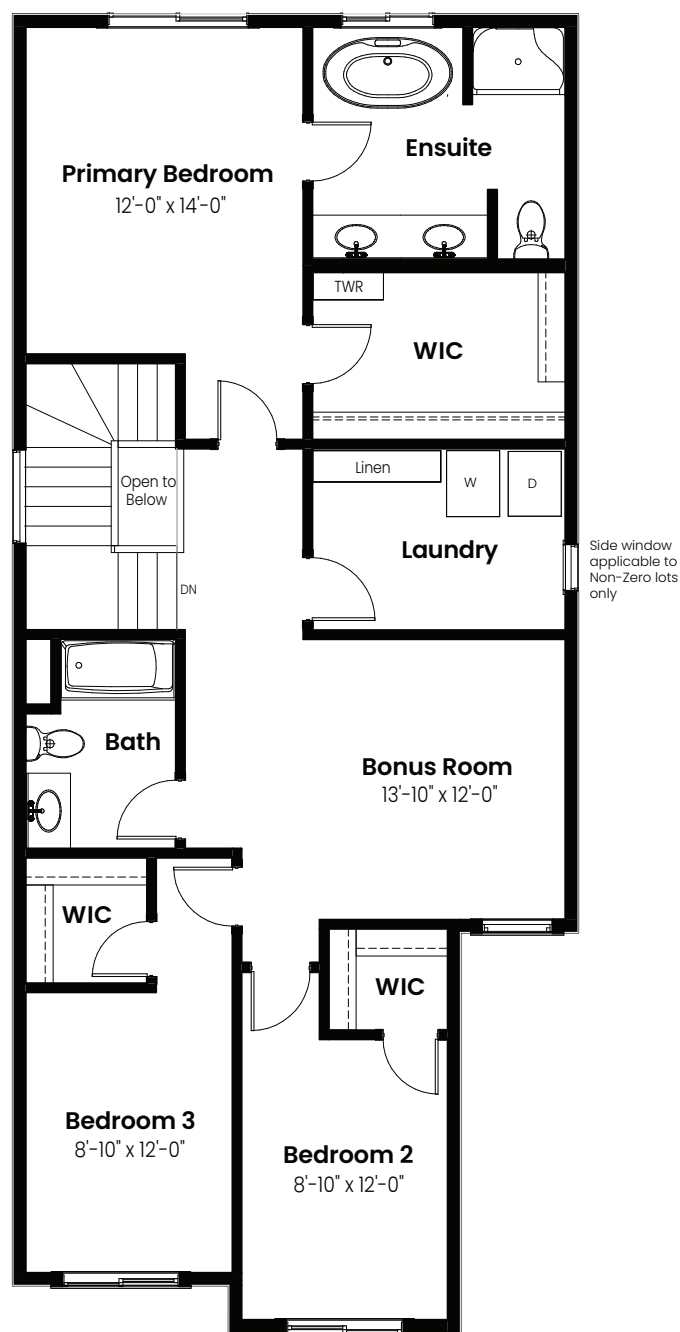
3 Beds | 2.5 Baths | 2,094 Sq. Ft. | 24' Wide

# Pisa

## Options



Main Floor Bedroom &  
Bathroom Option: 864 Sq Ft



4 Piece Ensuite Option: 1230 Sq Ft



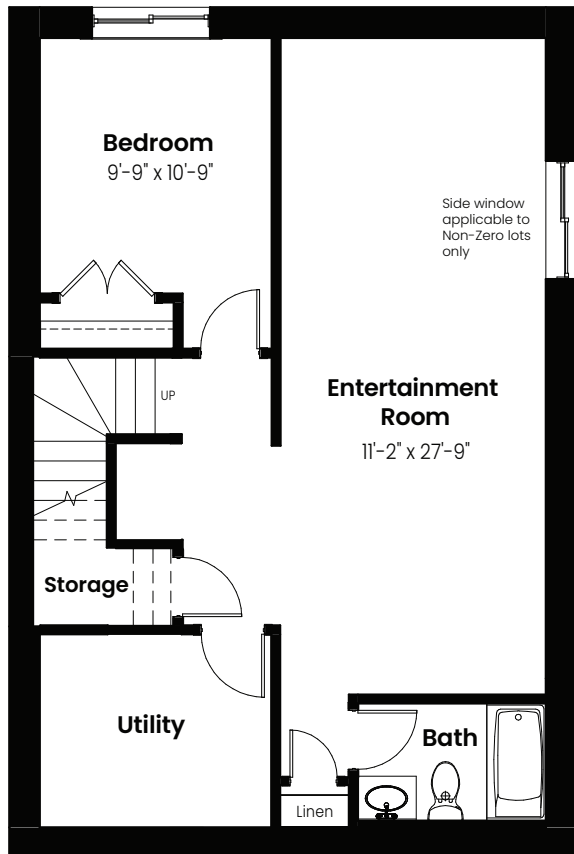
© 2025 Landmark Group of Companies Inc. All rights reserved. Any use or reproduction in whole or in part of these promotional materials without the prior written authorization of Landmark Group of Companies Inc. is strictly prohibited. Floor plans, specifications, pricing and dimensions shown are approximate and subject to change without notice. Artist rendering shown. Interior room dimensions are taken from inside of walls. Garage dimensions are taken from outside of walls. Revised on 01/13/2025.



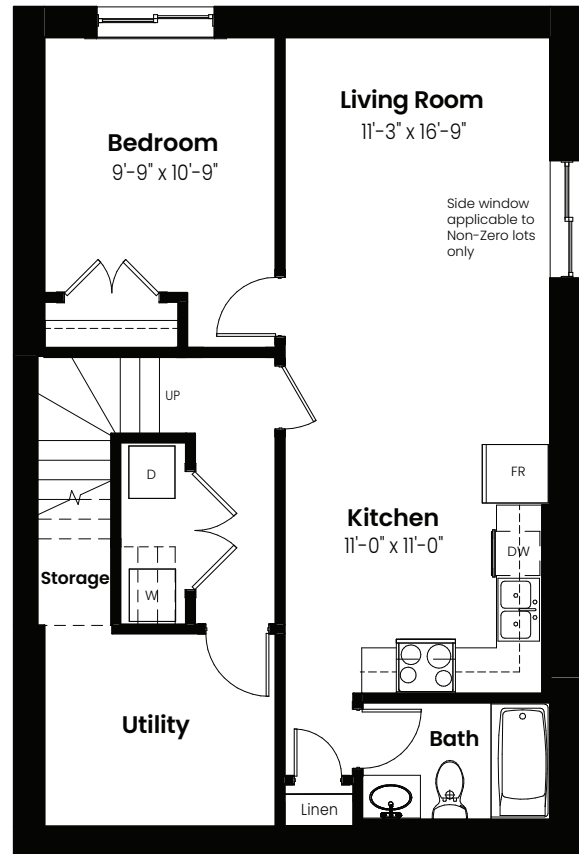
3 Beds | 2.5 Baths | 2,094 Sq. Ft. | 24' Wide

Pisa

# Basement Options



Basement Development  
Option: 634 Sq Ft



Basement Suite Option: 634 Sq Ft



© 2025 Landmark Group of Companies Inc. All rights reserved. Any use or reproduction in whole or in part of these promotional materials without the prior written authorization of Landmark Group of Companies Inc. is strictly prohibited. Floor plans, specifications, pricing and dimensions shown are approximate and subject to change without notice. Artist rendering shown. Interior room dimensions are taken from inside of walls. Garage dimensions are taken from outside of walls. Revised on 01/13/2025.

3 Beds | 2.5 Baths | 2,094 Sq. Ft. | 24' Wide

# Pisa

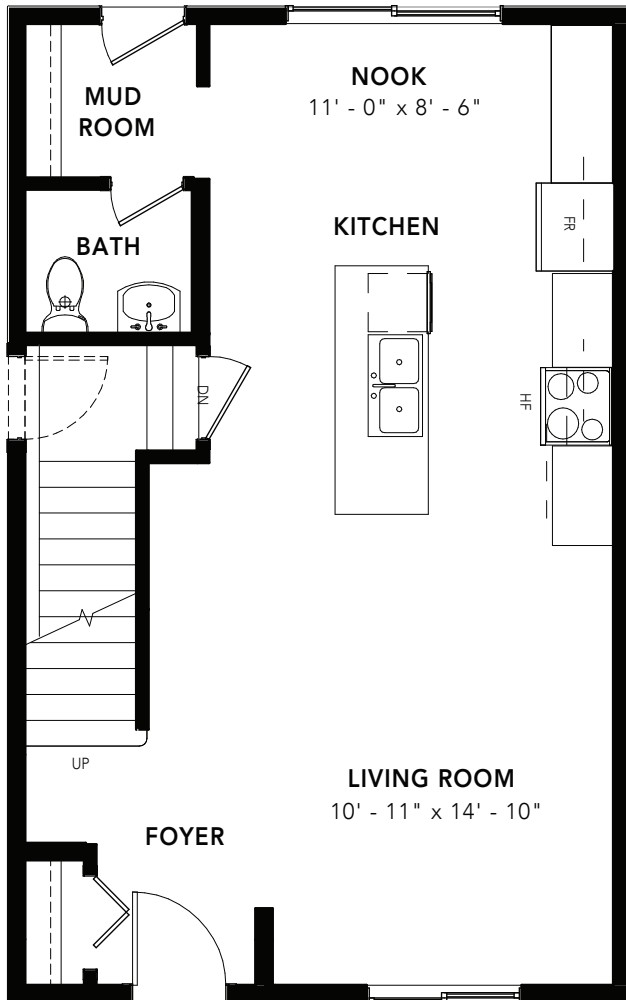
## Elevation



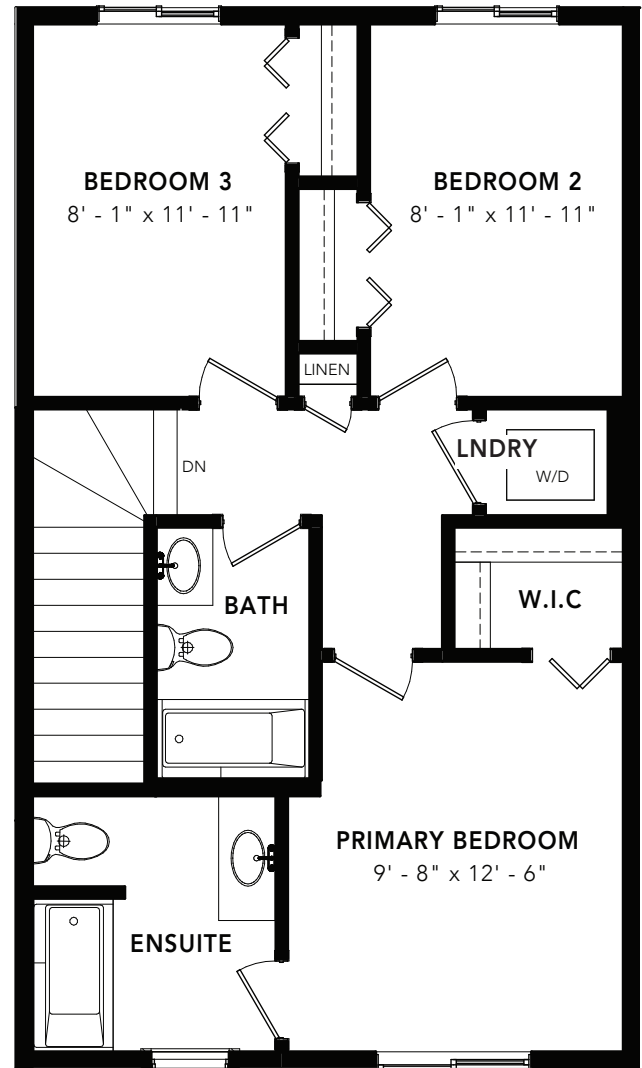
© 2025 Landmark Group of Companies Inc. All rights reserved. Any use or reproduction in whole or in part of these promotional materials without the prior written authorization of Landmark Group of Companies Inc. is strictly prohibited. Floor plans, specifications, pricing and dimensions shown are approximate and subject to change without notice. Artist rendering shown. Interior room dimensions are taken from inside of walls. Garage dimensions are taken from outside of walls. Revised on 01/13/2025.

# RUUD

3 BEDS 2.5 BATHS 1320 SQ FT 20' WIDE



MAIN FLOOR : 640 SQ FT

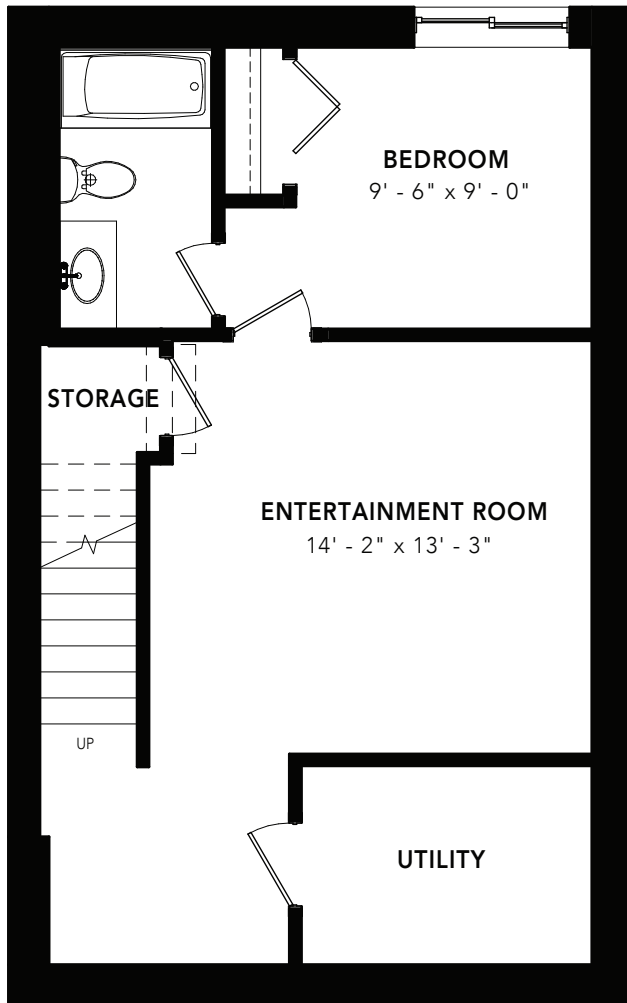


SECOND FLOOR: 680 SQ FT

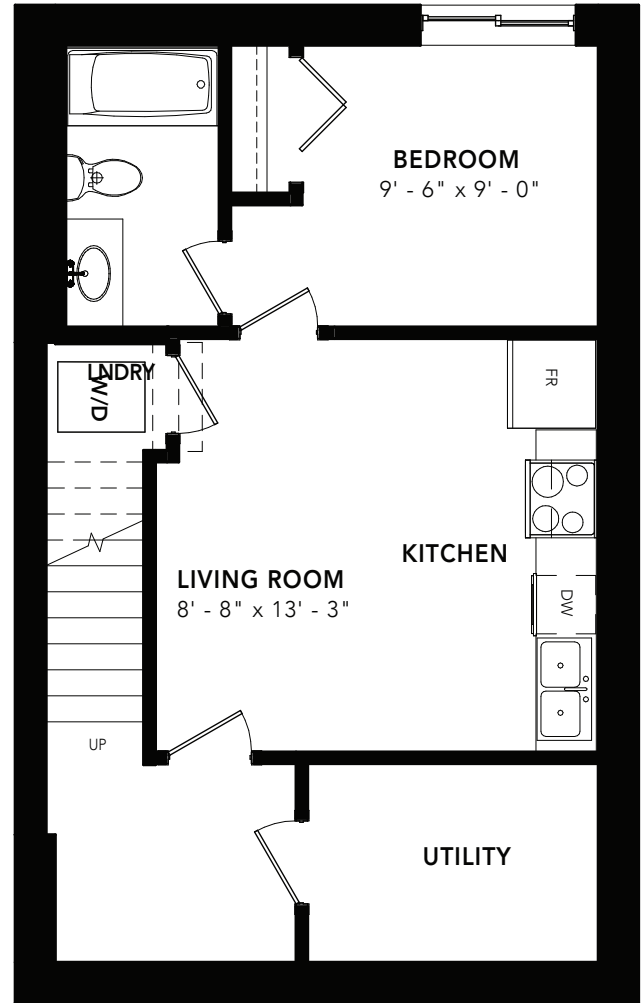
# RUUD

## OPTIONS

3 BEDS 2.5 BATHS 1320 SQ FT 20' WIDE



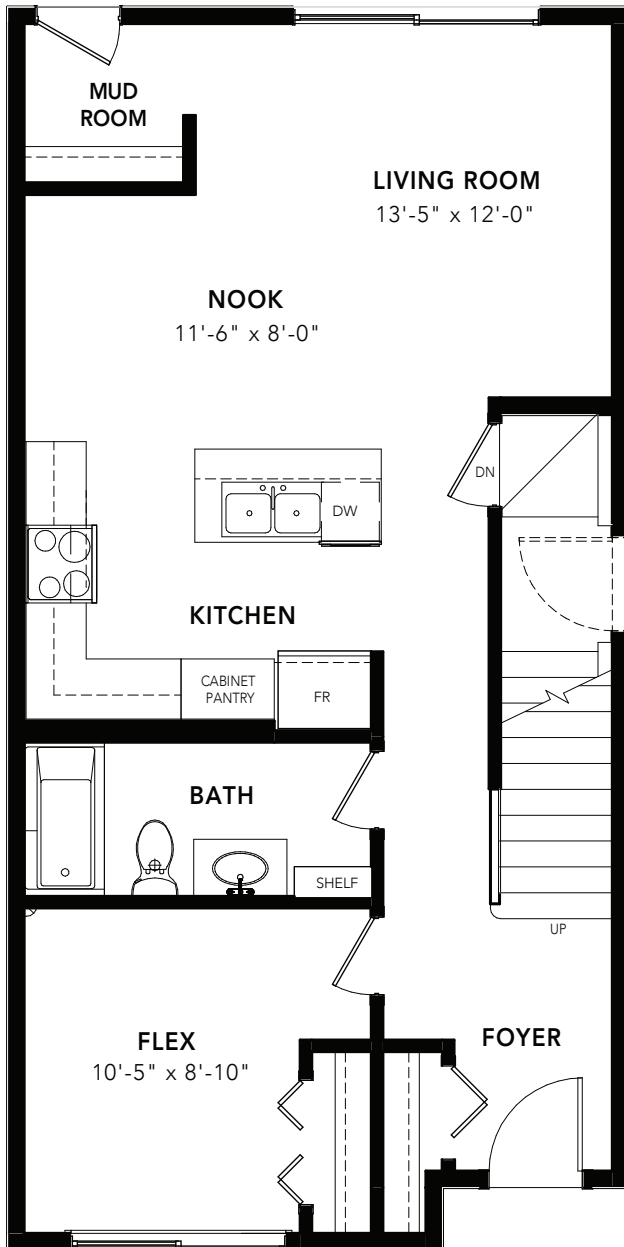
BASEMENT DEVELOPMENT OPTION: 457 SQ FT



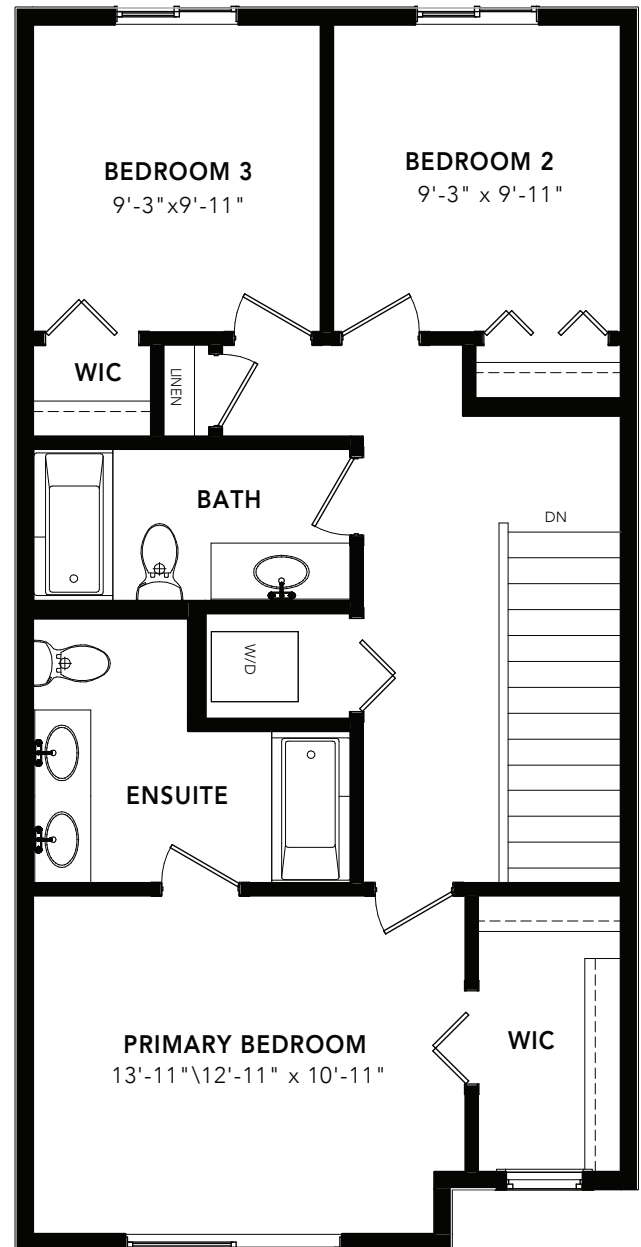
BASEMENT SUITE OPTION: 457 SQ FT

# SANFORD

3 BEDS 3 BATHS 1576 SQ FT 20' WIDE



MAIN FLOOR : 788 SQ FT



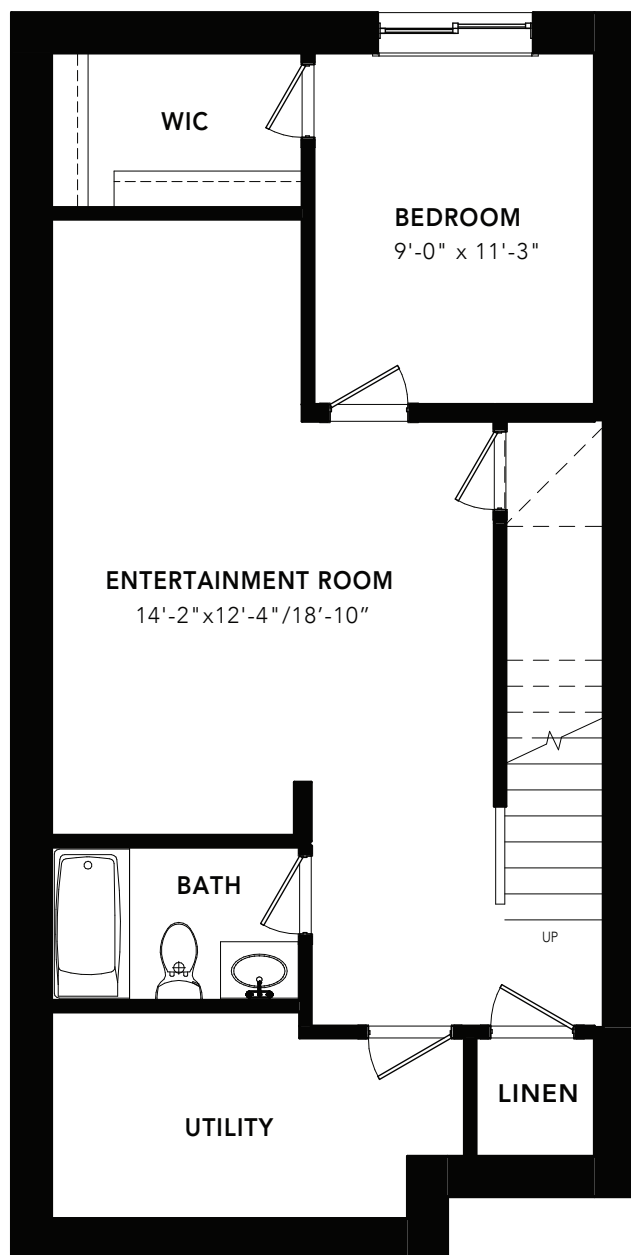
SECOND FLOOR: 788 SQ FT



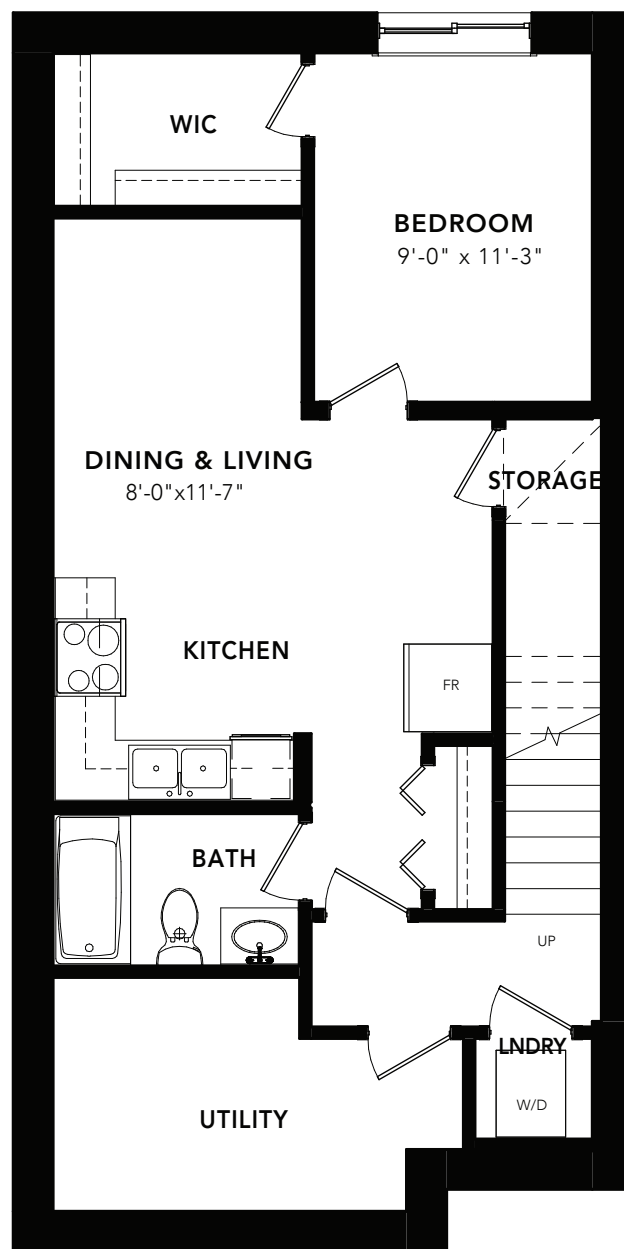
# SANFORD

OPTIONS

3 BEDS 3 BATHS 1576 SQ FT 20' WIDE



BASEMENT DEVELOPMENT: 605 SQ FT

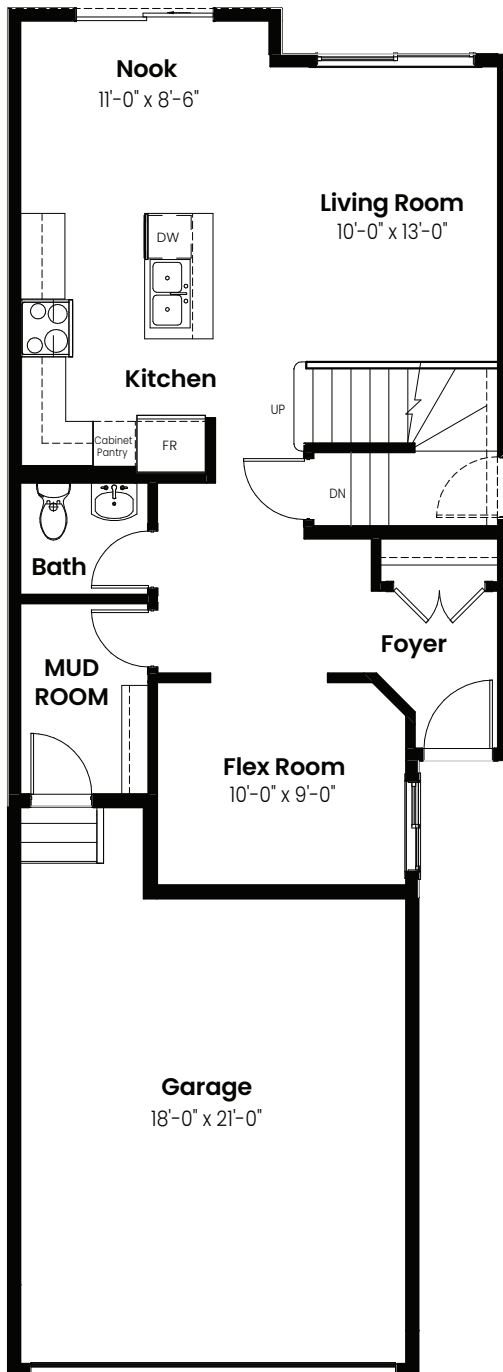


BASEMENT SUITE: 605 SQ FT

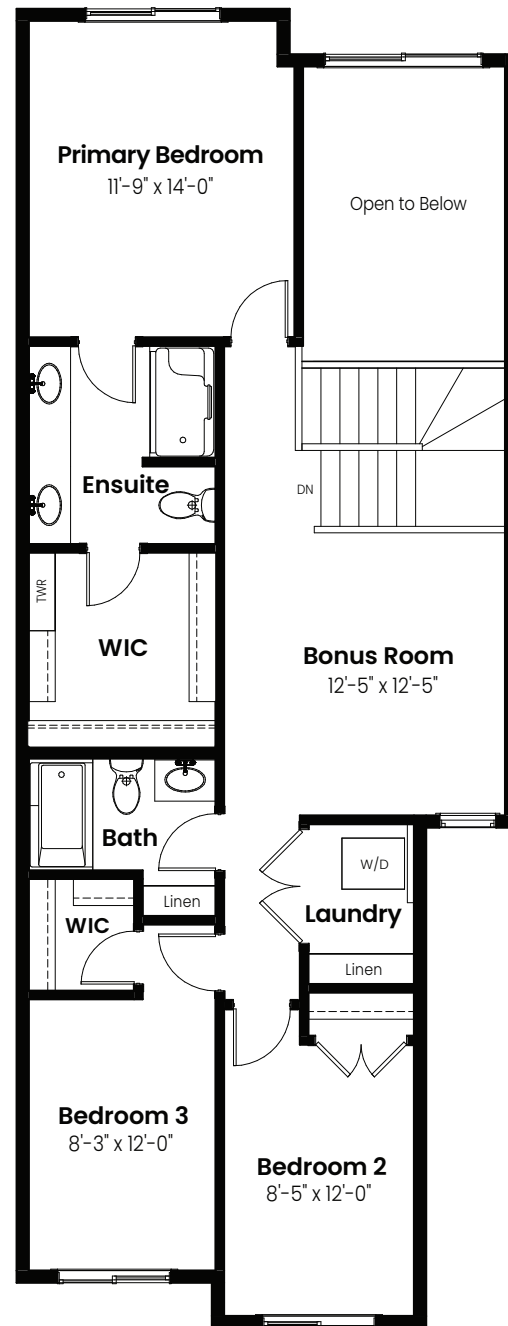
3 Bedrooms | 2.5 Bathrooms

# Terra

**1,824 sqft**  
22' Wide



Main Floor: 790 Sq Ft



Second Floor: 1034 Sq Ft

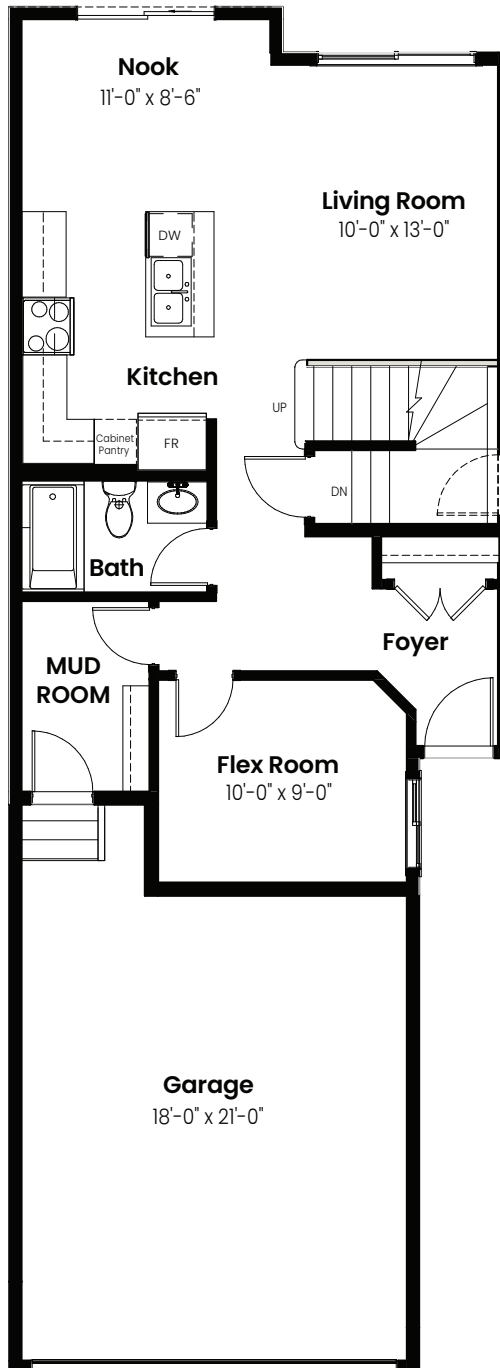


© 2025 Landmark Group of Companies Inc. All rights reserved. Any use or reproduction in whole or in part of these promotional materials without the prior written authorization of Landmark Group of Companies Inc. is strictly prohibited. Floor plans, specifications, pricing and dimensions shown are approximate and subject to change without notice. Artist rendering shown. Interior room dimensions are taken from inside of walls. Garage dimensions are taken from outside of walls. Revised on 01/17/2025.

3 Beds | 2.5 Baths | 1,824 Sq. Ft. | 22' Wide

# Terra

## Options



Main Floor Full Bathroom Option: 790 Sq Ft

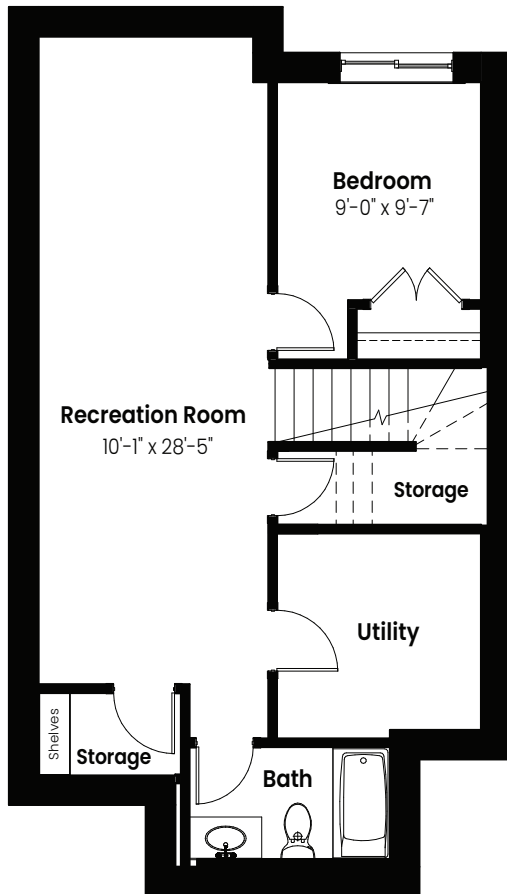


© 2025 Landmark Group of Companies Inc. All rights reserved. Any use or reproduction in whole or in part of these promotional materials without the prior written authorization of Landmark Group of Companies Inc. is strictly prohibited. Floor plans, specifications, pricing and dimensions shown are approximate and subject to change without notice. Artist rendering shown. Interior room dimensions are taken from inside of walls. Garage dimensions are taken from outside of walls. Revised on 01/17/2025.

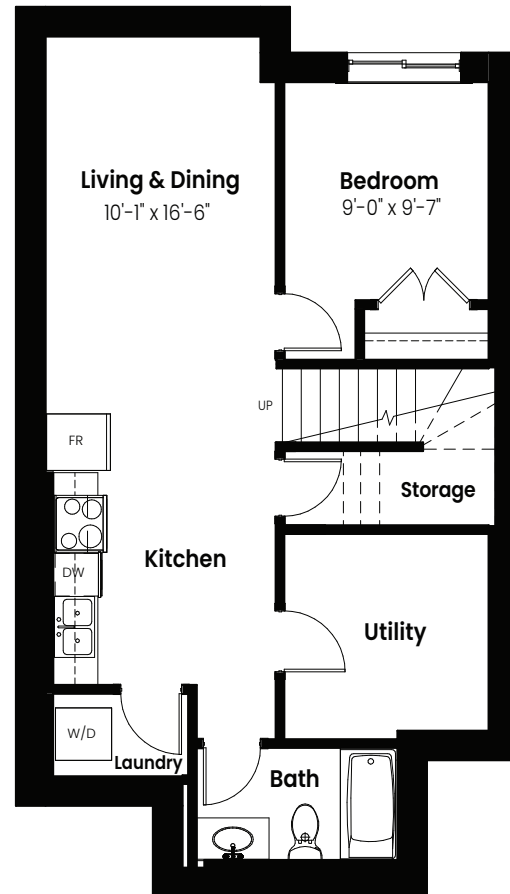
3 Beds | 2.5 Baths | 1,824 Sq. Ft. | 22' Wide

# Terra

## Basement Options



Basement Development  
Option: 555 Sq Ft



Basement Suite Option: 555 Sq Ft



© 2025 Landmark Group of Companies Inc. All rights reserved. Any use or reproduction in whole or in part of these promotional materials without the prior written authorization of Landmark Group of Companies Inc. is strictly prohibited. Floor plans, specifications, pricing and dimensions shown are approximate and subject to change without notice. Artist rendering shown. Interior room dimensions are taken from inside of walls. Garage dimensions are taken from outside of walls. Revised on 01/17/2025.

3 Beds | 2.5 Baths | 1,824 Sq. Ft. | 22' Wide

# Terra

## Elevation

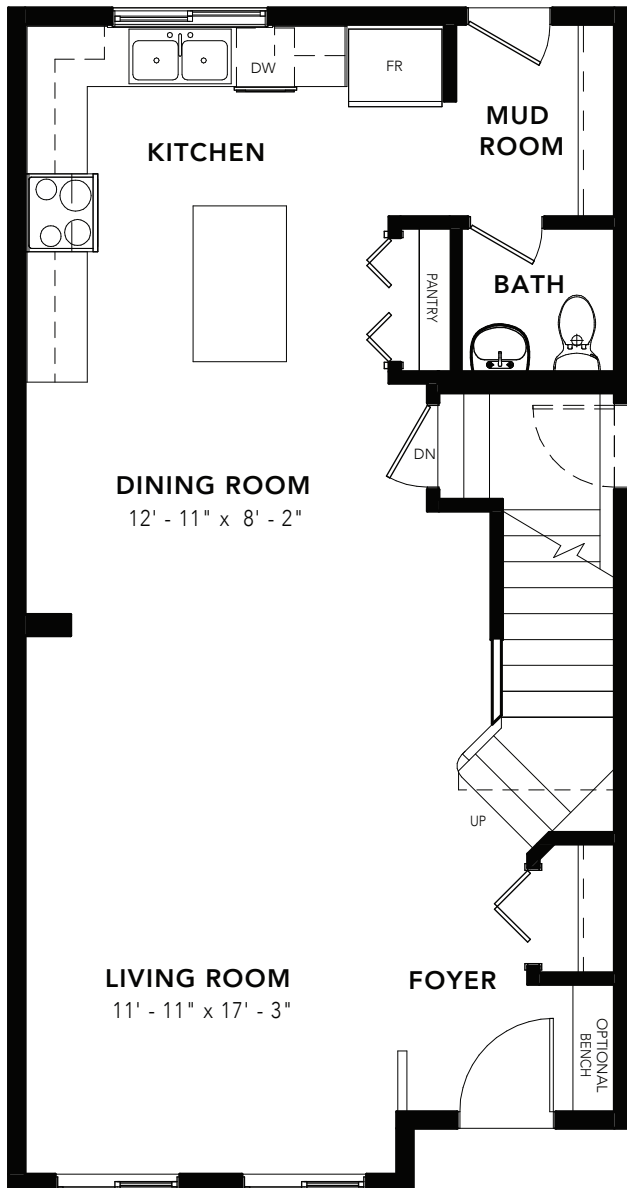


© 2025 Landmark Group of Companies Inc. All rights reserved. Any use or reproduction in whole or in part of these promotional materials without the prior written authorization of Landmark Group of Companies Inc. is strictly prohibited. Floor plans, specifications, pricing and dimensions shown are approximate and subject to change without notice. Artist rendering shown. Interior room dimensions are taken from inside of walls. Garage dimensions are taken from outside of walls. Revised on 01/17/2025.

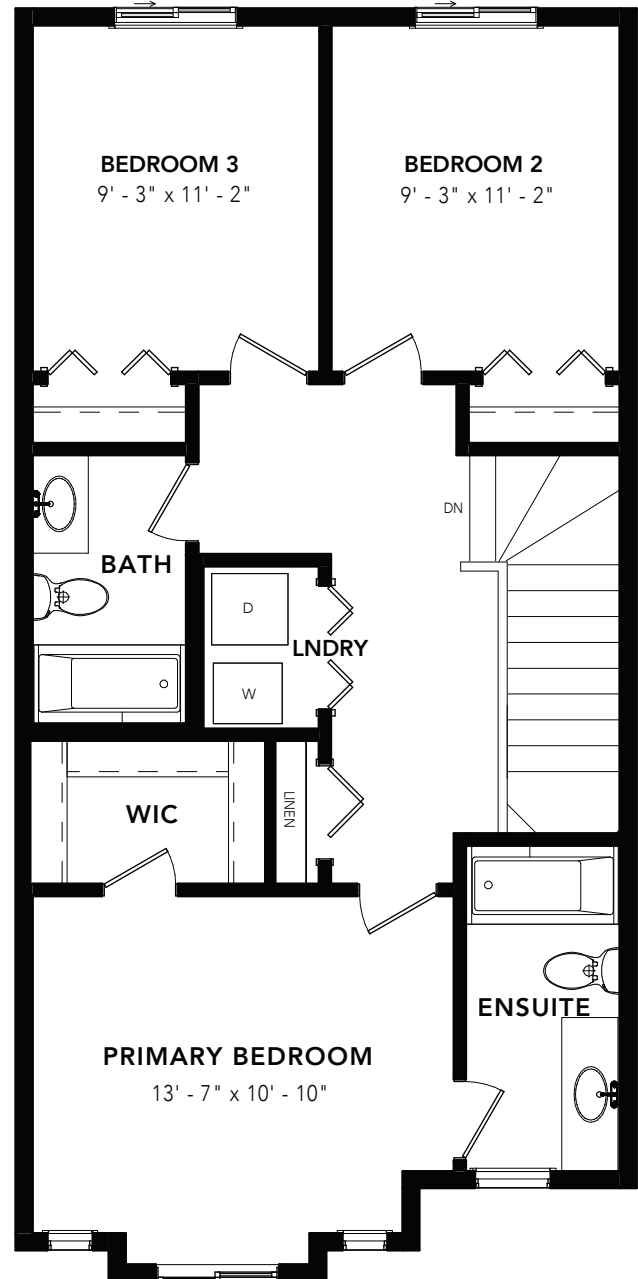


# WOLF

3 BEDS 2.5 BATHS 1539 SQ FT 20' WIDE



MAIN FLOOR : 746 SQ FT

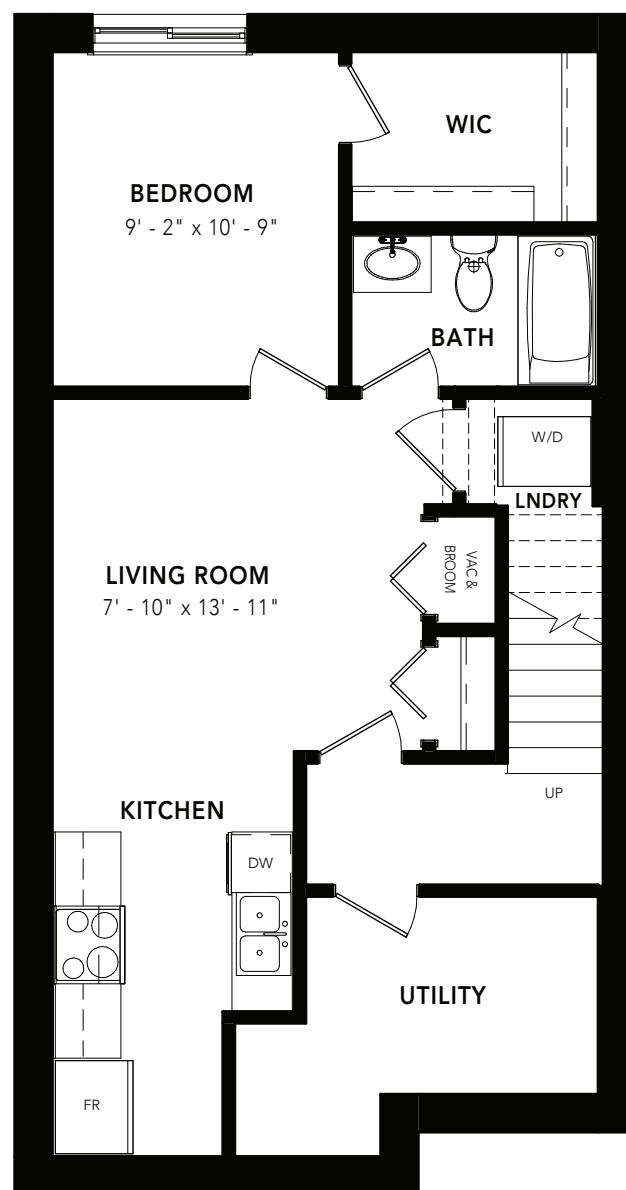
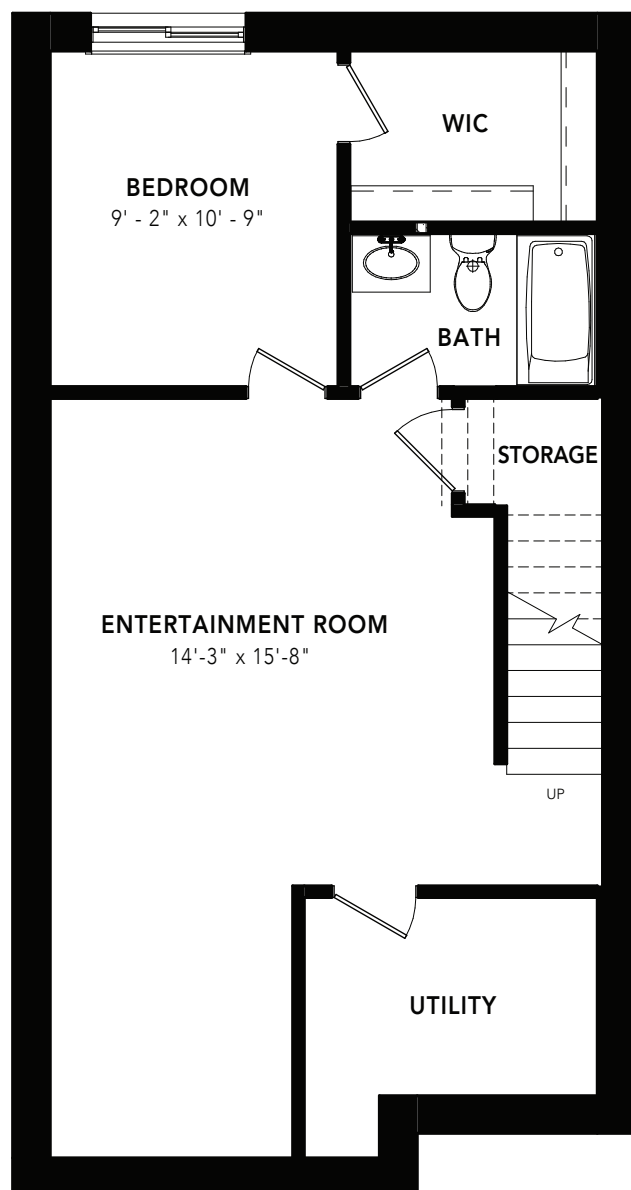


SECOND FLOOR: 793 SQ FT

# WOLF

## OPTIONS

3 BEDS 2.5 BATHS 1539 SQ FT 20' WIDE



BASEMENT DEVELOPMENT OPTION: 548 SQ FT

BASEMENT SUITE OPTION: 548 SQ FT