

A QUALICO Company

The visuals presented are artist's renderings illustrating the planned aesthetics of our new townhome community. Design elements, specifications, and finishes depicted might vary in the actual townhomes due to ongoing refinements or modifications. Subject to change without notice. E.&OE.

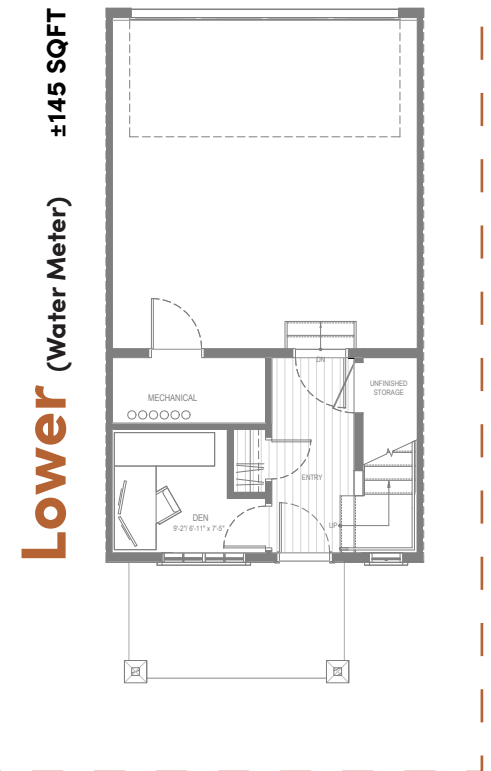
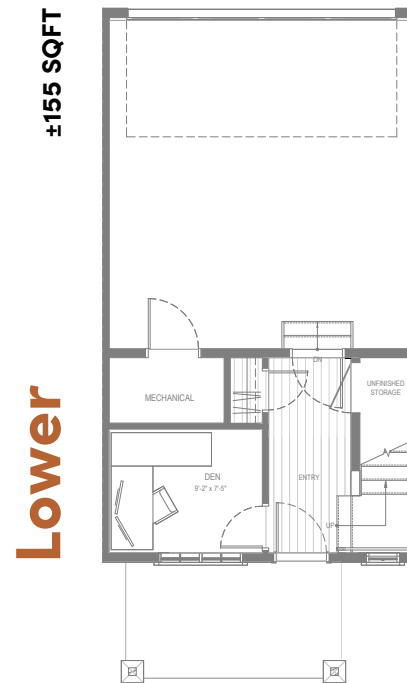
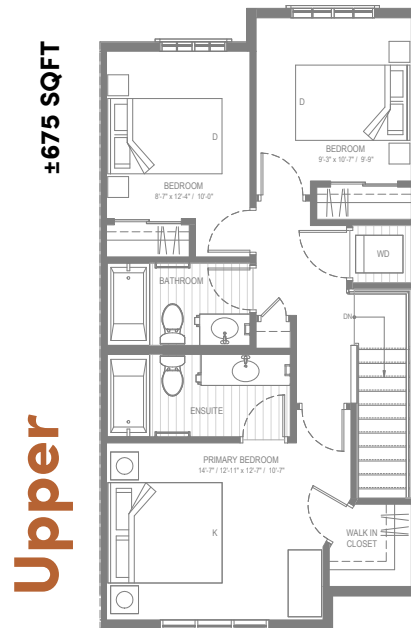
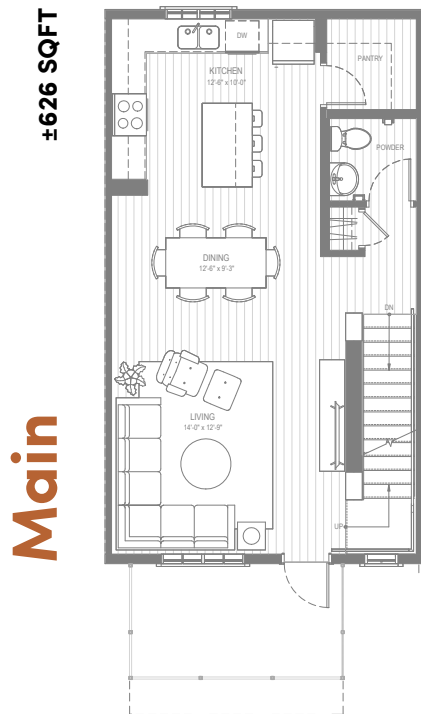


Features

- 3 bedroom, 2.5 bathroom
- Open concept design on main level
- Large kitchen with breakfast bar and pantry
- Upper level laundry
- Double car garage
- Lower floor den

Floorplan D1.1

±1,456 SQFT

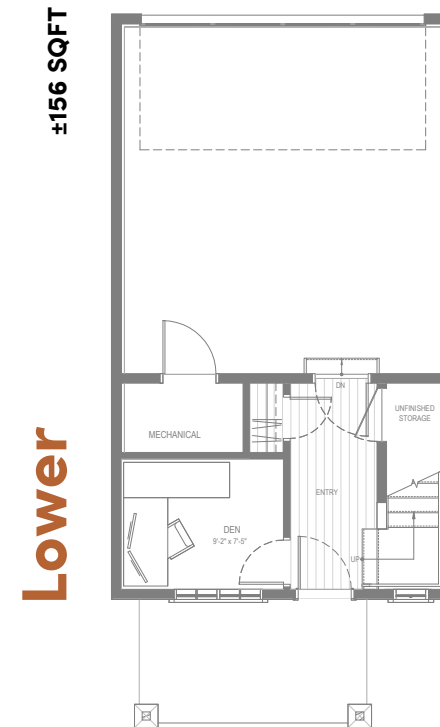
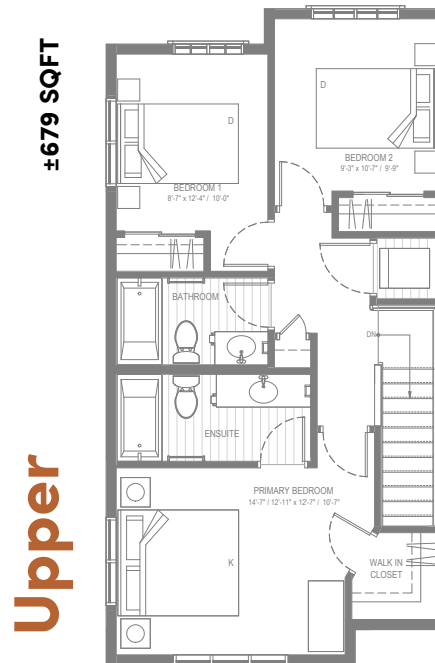
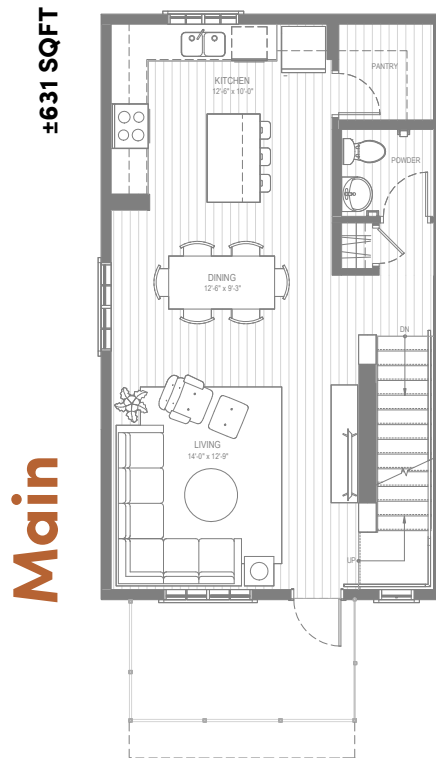


Floorplan D2.1

±1,466 SQFT

Features

- 3 bedroom, 2.5 bathroom
- End Unit
- Open concept design on main level
- Large kitchen with breakfast bar and pantry
- Upper level laundry
- Double car garage
- Lower floor den

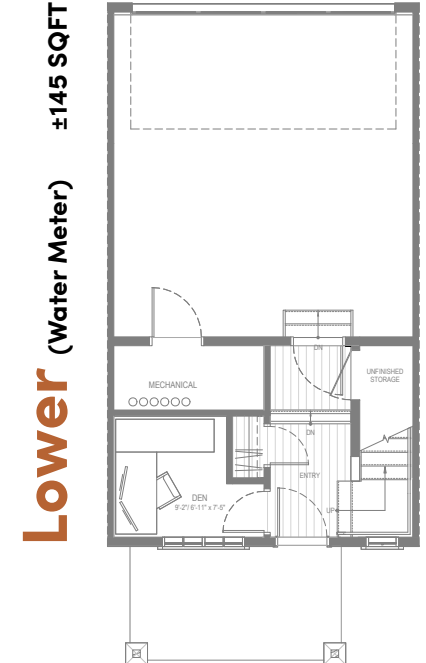
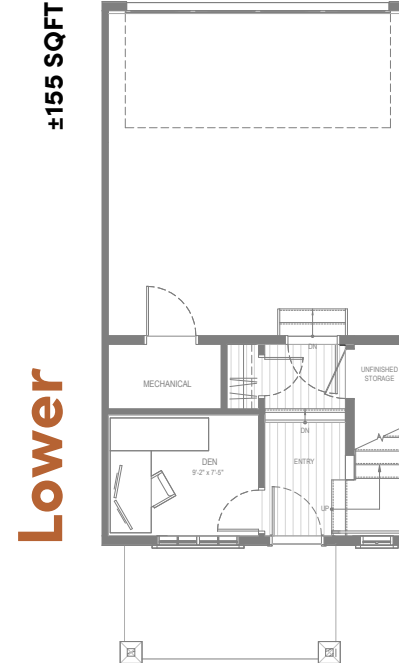
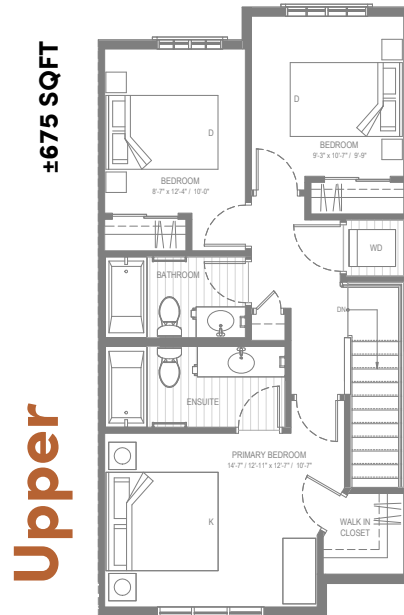
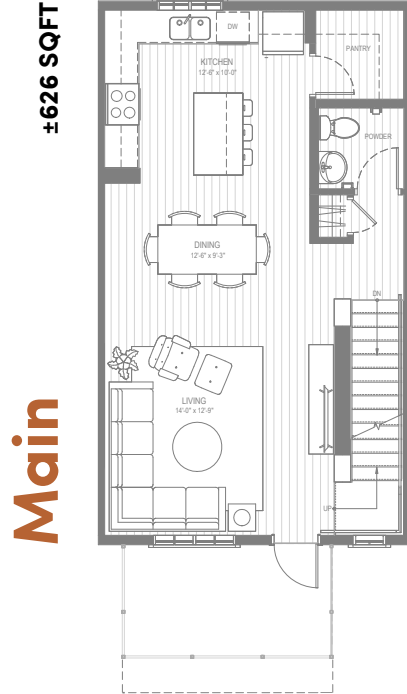


Features

- 3 bedroom, 2.5 bathroom
- Open concept design on main level
- Large kitchen with breakfast bar and pantry
- Upper level laundry
- Double car garage
- Lower floor den

Floorplan D1.2

±1,456 SQFT

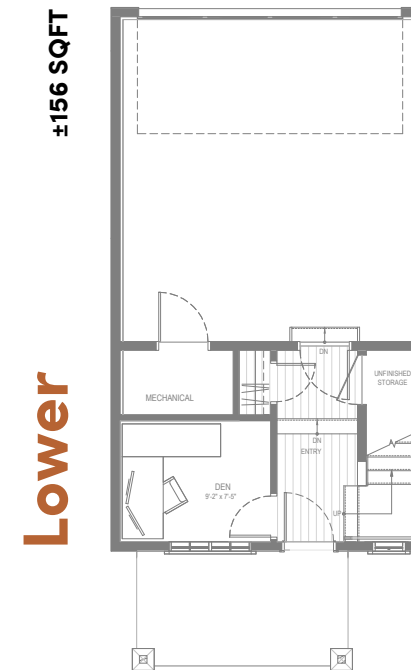
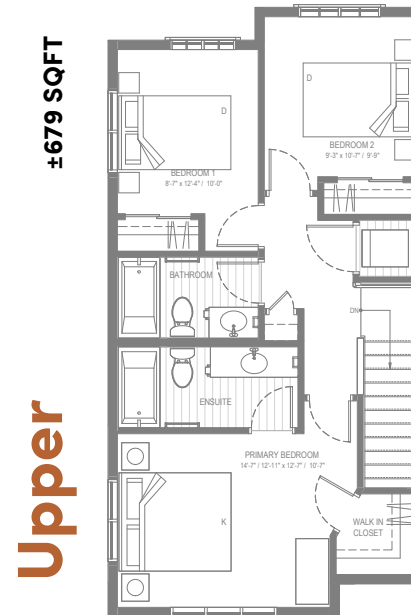
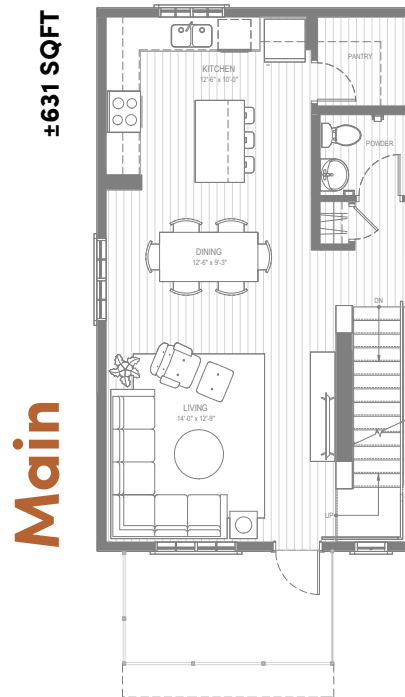


Floorplan D2.2

±1,466 SQFT

Features

- 3 bedroom, 2.5 bathroom
- End Unit
- Open concept design on main level
- Large kitchen with breakfast bar and pantry
- Upper level laundry
- Double car garage
- Lower floor den

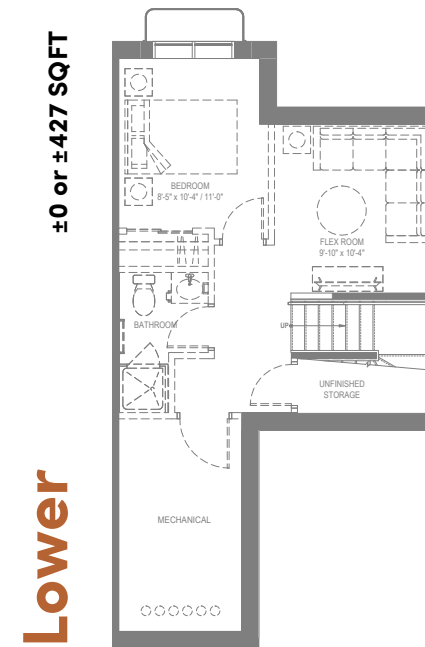
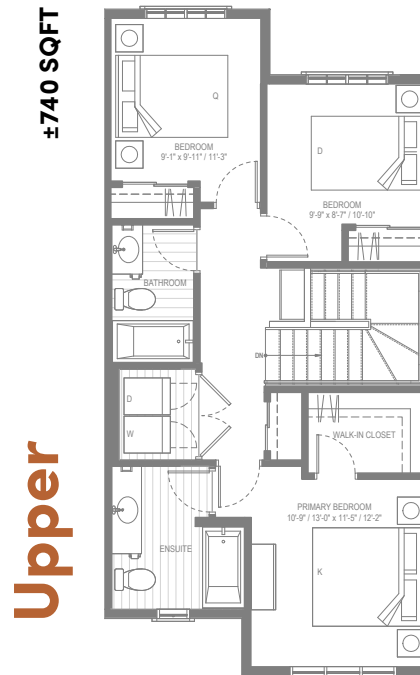
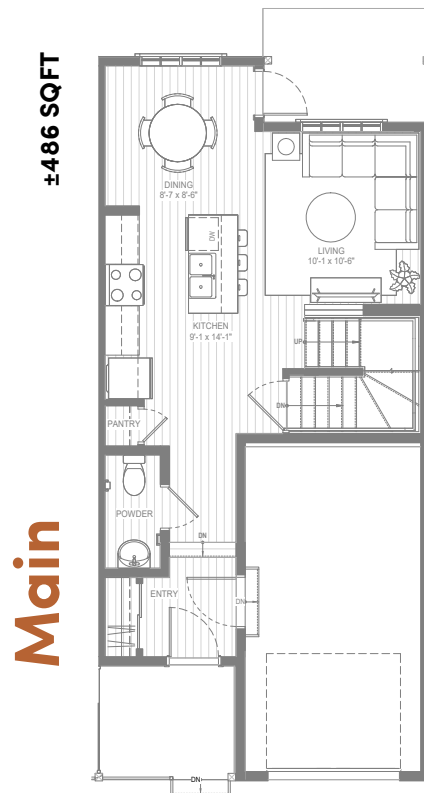


Features

- 3-4 bedroom, 2.5-3.5 bathroom
- Open concept design on main level
- Large kitchen with breakfast bar and pantry
- Upper level laundry
- Single car garage

Floorplan C3

±1,226 SQFT | ±1,653 SQFT (With Developed Basement)

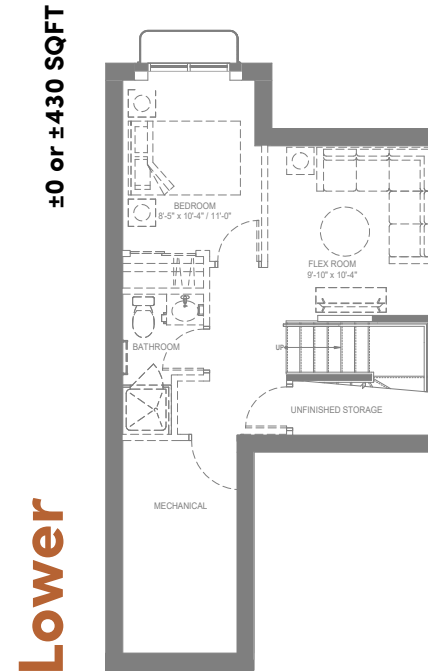
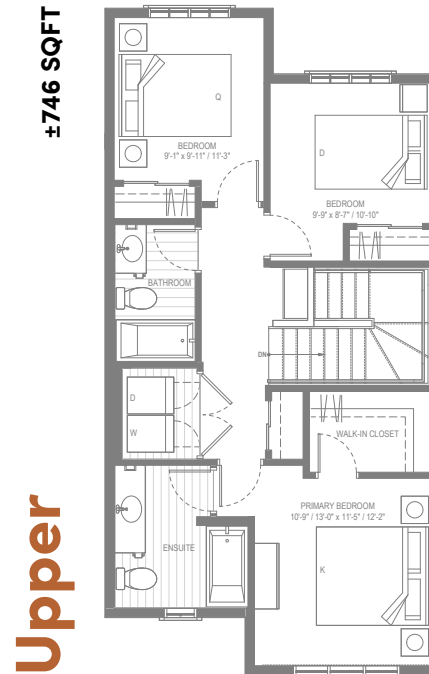
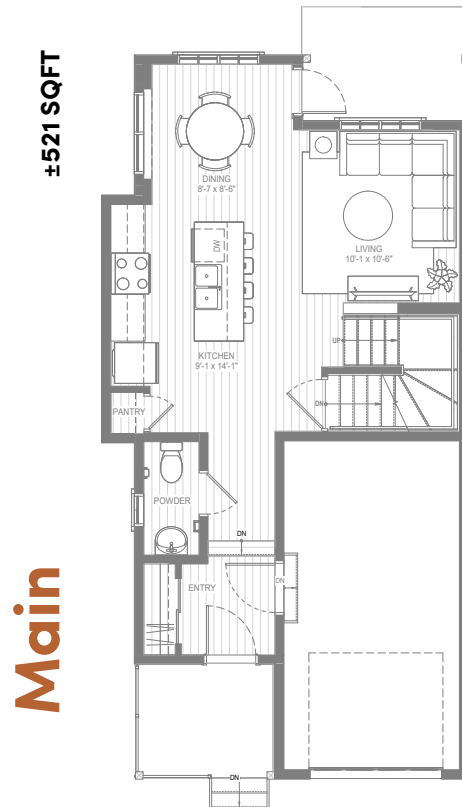


Floorplan C4

±1,267 SQFT | ±1,697 SQFT (With Developed Basement)

Features

- 3-4 bedroom, 2.5-3.5 bathroom
- End Unit
- Open concept design on main level
- Large kitchen with breakfast bar and pantry
- Upper level laundry
- Single car garage



Interior & Building Features

Kitchen

- Modern light & dark cabinet slab-style cabinets & drawers with 42" ceiling height uppers
- Full bank of drawers as standard
- Soft close cabinets & drawers
- Stylish polished white quartz countertops
- Tile backsplash
- Stainless Steel Whirlpool Kitchen appliances
- Polished chrome Moen one-handle high arc kitchen faucet with pull-down sprayer

Flooring & Finishing

- Luxury vinyl plank flooring on main floor, main bathroom, ensuite, powder room & laundry room
- Luxurious warm grey carpet in the bedrooms with a thick 8lb underlay
- Contemporary lighting package selected by professional designers

Bath

- Modern light & dark slab-style vanity cabinet with drawers to match the kitchen
- Stylish quartz counter tops
- Moen single handle chrome faucet
- Pedestal sink in the powder room
- High efficiency toilets

Mechanical & Electrical

- High efficiency gas furnace
- Digital thermostat
- 50 gal. (U.S.) electric hot water tank
- Smoke & carbon monoxide detectors
- Garage door opener with two remotes
- BBQ natural gas line on patio or balcony

Exterior & Sound Attenuation

- Durable exterior cladding featuring a mix of vinyl siding, fibre cement panel & asphalt roof shingles
- Lifetime limited warranty on roof shingles
- Energy efficient dual pane windows with low E-coating
- Metal picket railings on balconies with frosted glass privacy screens as required
- Sound attenuation system for increased privacy

Warranty & Service

- One year National Home Warranty covering materials & labour
- Two year National Home Warranty covering delivery & distribution systems
- Five year National Home Warranty covering the building envelope
- Ten Year National Home Warranty covering the structural components including the framing and foundation of the home
- Conasys online portal with convenient monthly maintenance reminders