

The Dahlia 18

AVAILABLE ELEVATIONS



FRONT ELEVATION

PRAIRIE



FRONT ELEVATION

CRAFTSMAN



FRONT ELEVATION

MODERN FARMHOUSE



FRONT ELEVATION

QUAINT QUEBECOIS

Please confirm with our Sales Team which elevations are available in your desired community. All elevations, floorplans and dimensions are for illustrative purposes only and are intended to convey a concept and visualization of our homes. They are subject to modifications at any time and are not to be used for contractual purposes. Square footage noted reflects Residential Measurement Standard.



crystalcreekhomes.ca



The Dahlia 18

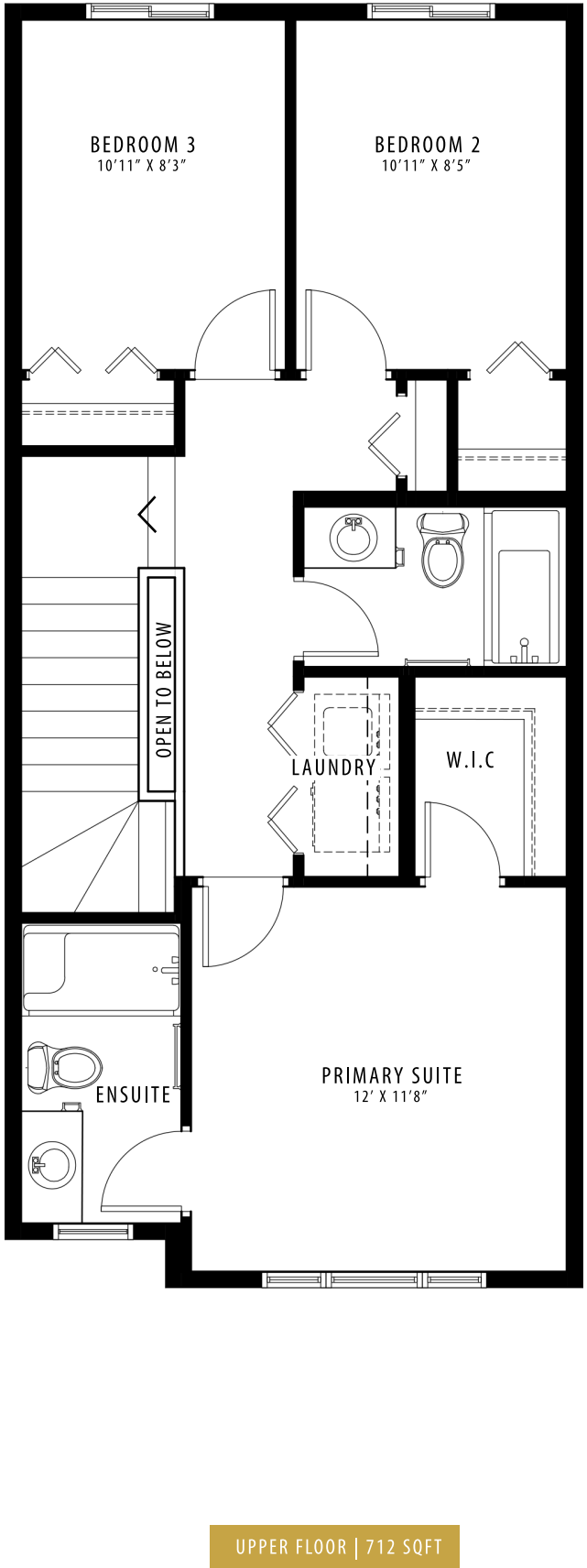
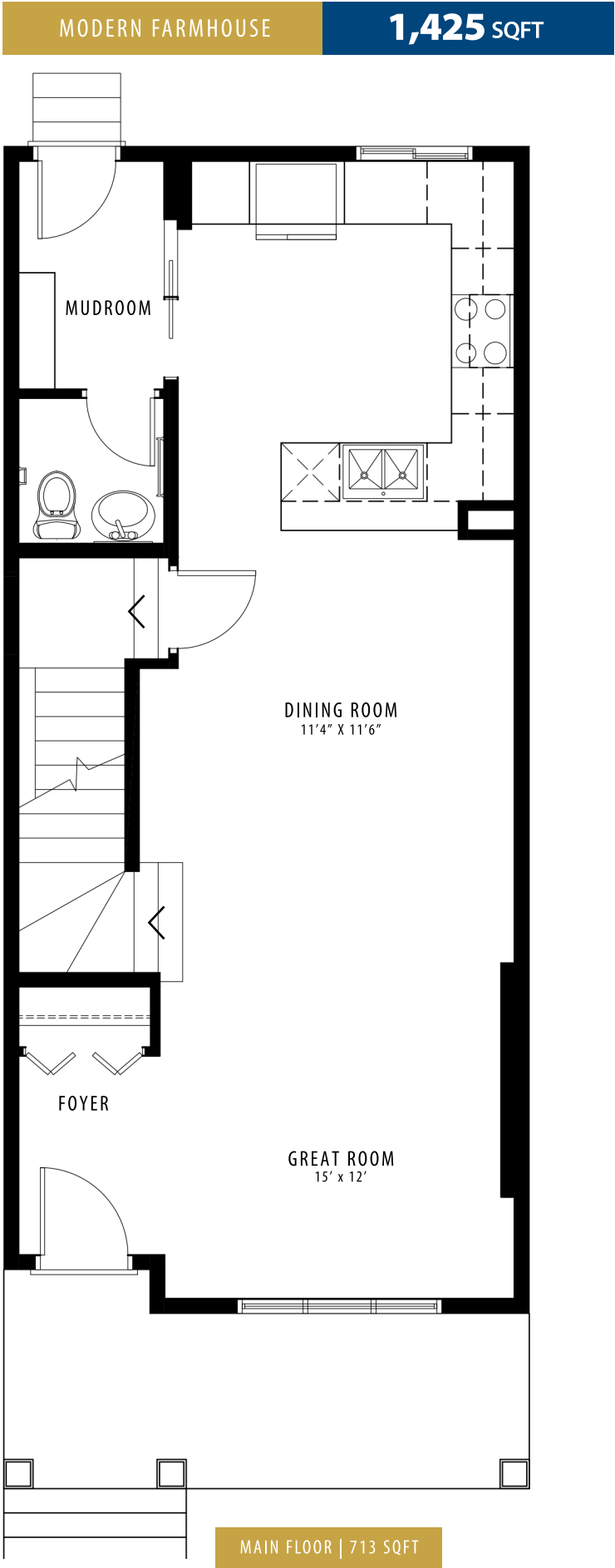
MODERN FARMHOUSE

1,425 SQFT

3 BEDROOMS | 2.5 BATHROOMS

crystalcreekhomes.ca

The Dahlia 18





CRYSTAL CREEK
H O M E S

**QUICK
POSSESSION**



The Mahogany

7114 52 Ave

2,226 SQFT

3 BEDROOMS | 2.5 BATHROOMS | 2 CAR GARAGE

élan

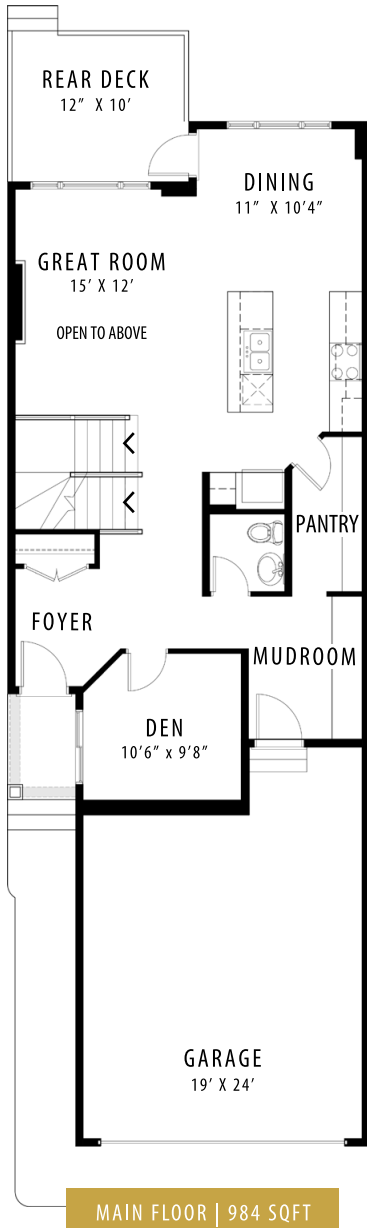
crystalcreekhomes.ca

The Mahogany

7114 52 Ave

2,226 SQFT

3 BEDROOMS | 2.5 BATHROOMS | 2 CAR GARAGE



FRONT ELEVATION

CRAFTSMAN



Contact our sales team for more information: elan@crystalcreekhomes.ca | 780-702-6198

All elevations, floorplans and dimensions are for illustrative purposes only and are intended to convey a concept and visualization of our homes. They are subject to modifications at any time and are not to be used for contractual purposes.



crystalcreekhomes.ca