





← 25' →

Min. Lot Width

 3 Bedrooms

 2½ Bathrooms

THE BRAVO

1600 SQ.FT.

☐ Elements Specification

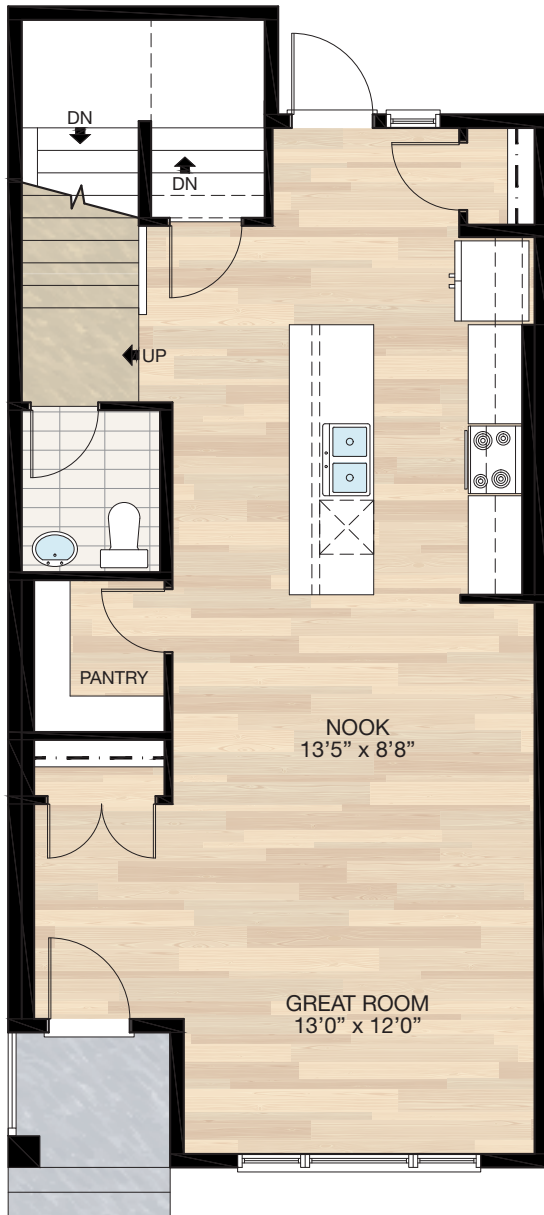
☐ Elite Specification



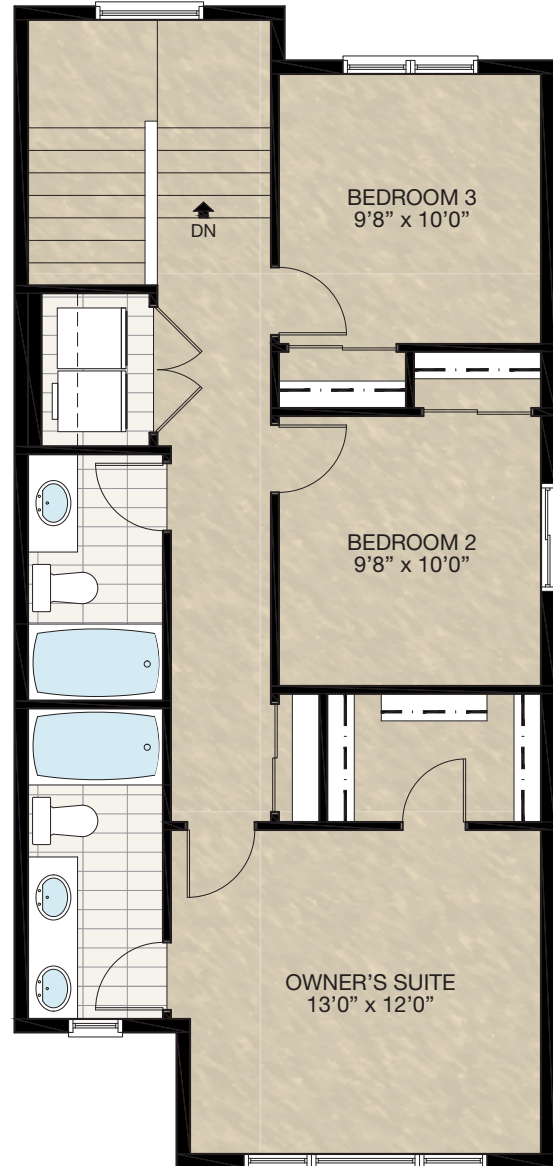
Trico Homes™
The Heart of Homebuilding®

STANDARD PLAN

THE
BRAVO
1600 SQ.FT.



MAIN
790 SQ.FT.



UPPER
810 SQ.FT.

HARDWOOD

DECK

CARPET

CONCRETE

TILE

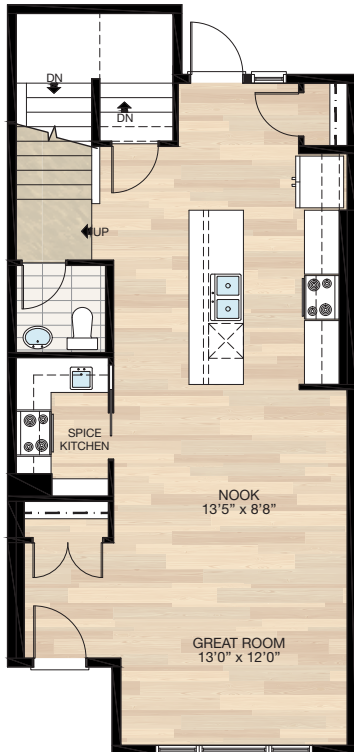
LVP

FEATURED OPTIONS



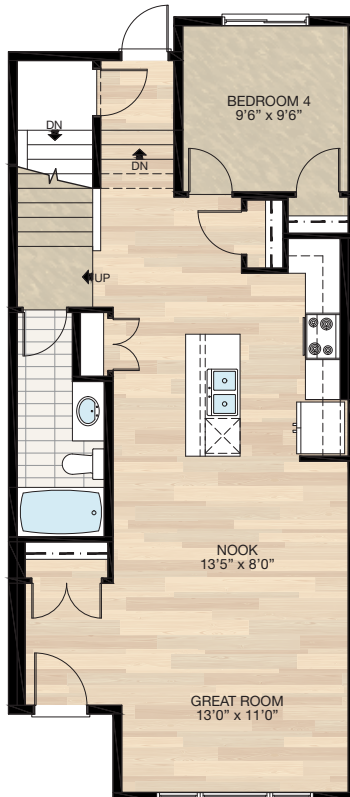
SELECT-1 SPICE KITCHEN OPTION

- Delete pantry closet
 - Reduced space at half bath & foyer
 - Add 2'8" pocket door to spice kitchen
 - Add 6 - 12" x 39" wire shelving
- *CANNOT be combined with **SELECT-2** main floor bedroom & full bath option



SELECT-2 MAIN FLOOR BEDROOM & FULL BATH OPTION

- Additional 61 sq.ft. to main floor (due to extension to rear of home)
 - Delete ½ bath
 - Delete pantry closet
 - Reduced space at foyer
 - Add 3-piece bath
 - Add pantry closet
 - Redesigned kitchen with reduced island
 - Relocate rear entrance to stairwell with part of the stair developed
 - Delete 24" x 72" VSL at rear
 - Add 60" x 40" HSL window to main floor bedroom
- *CANNOT be combined with **SELECT-1** spice kitchen option



SELECT-3 BONUS ROOM OPTION

- *MUST combined with either **SELECT-2**, **6**, OR **7** main floor bedroom & full bath option
- Additional 80 sq.ft. to upper floor (due to extension to rear of home)
- Side-by-side laundry closet change to stackable
- Reduced vanity at ensuite & main bath
- Reduced WIC at master suite
- Deleted linen closet
- Add 60" x 24" P window to bonus room



HARDWOOD

DECK

CARPET

CONCRETE

TILE

LVP

FEATURED BRAVO OPTIONS

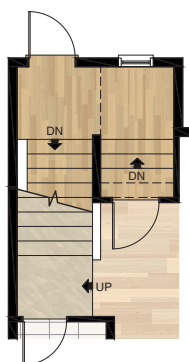
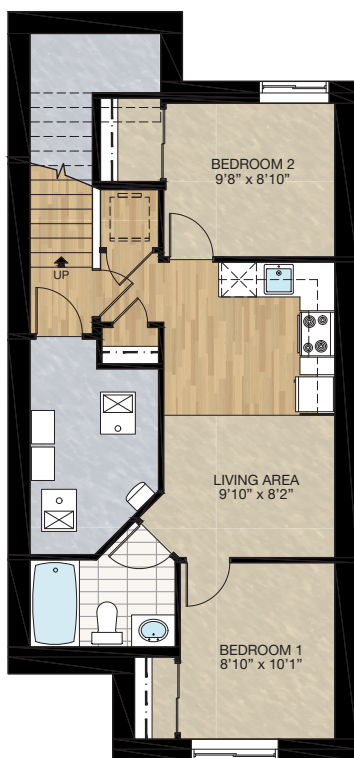


SECONDARY SUITE OPTION 1

- 545 Sq.Ft. Basement development
- Included finished basement stairwell
- Add 2'8" rear entrance door & exterior light at stairwell
- Add 24" x 60" P window at stairwell (grade dependent)
- Upgraded stairwell switches to 4-way
- Add 1 riser to stairwell for 9'0" basement ceiling (8'9" headroom clearance)
- Upgrade basement window from 60" x 24" to 60" x 36"
- Add 48" x 36" HSL window to rear
- Includes washer & dryer rough-in only
- Change stairwell switch from 3-way to 4-way

*Note: no deck above rear window well (concrete patio in lieu of wood deck)

*CANNOT be combined with **SELECT-2 & 6** main floor options

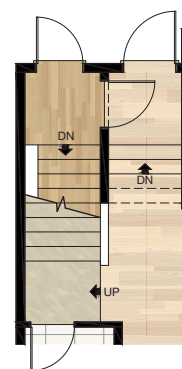


Main Floor Stair For
Secondary Suite

SECONDARY SUITE OPTION 2

- 618 Sq.Ft. Basement development
- Included finished basement stairwell
- Add 2'8" rear entrance door & exterior light at stairwell
- Add 1 riser to stairwell for 9'0" basement ceiling (8'9" headroom clearance)
- Upgrade basement window from 60" x 24" to 60" x 36"
- Add 48" x 36" HSL window to rear
- Includes washer & dryer rough-in only

*MUST be combined with either **SELECT-2, 6, OR 7** main floor option



Main Floor Stair For
Secondary Suite

HARDWOOD

DECK

CARPET

CONCRETE

TILE

LVP

FEATURED BRAVO OPTIONS

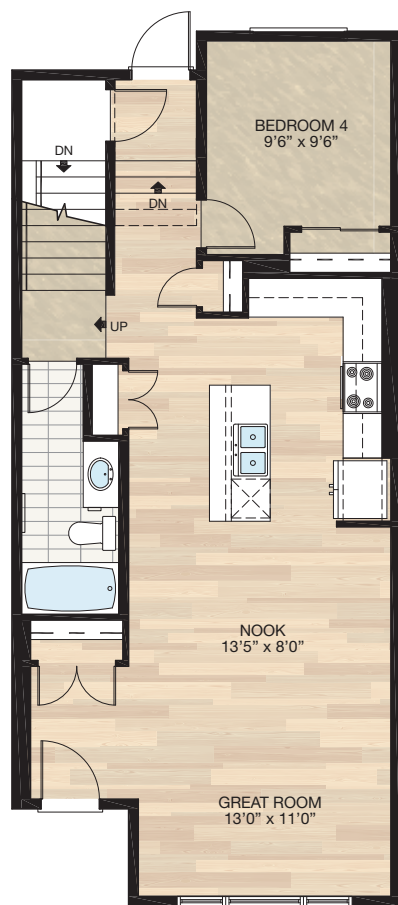


SELECT-7

MAIN FLOOR BEDROOM & FULL BATH WITH LARGER KITCHEN OPTION

- Additional 61 Sq.Ft. to main floor (due to extension to rear of home)
- Delete ½ bath
- Delete pantry closet
- Reduced space at foyer
- Add 3-piece bath
- Add pantry closet
- Redesigned kitchen with reduced island
- Relocate rear entrance to stairwell with part of the stair developed
- Delete 24" x 60" VSL at rear
- Add 60" x 40" HSL window to main floor bedroom

*CANNOT be combined with **SELECT-1** spice kitchen option



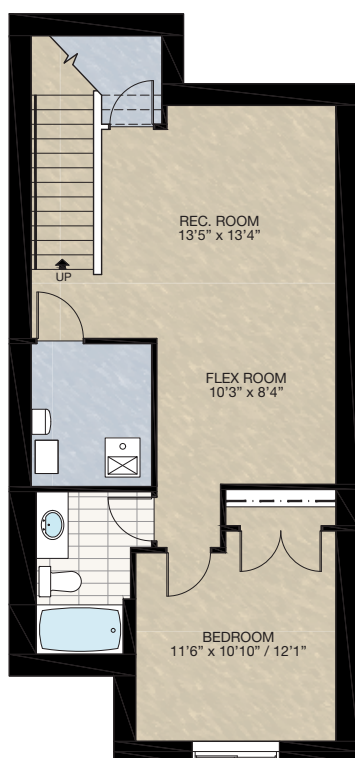
FEATURED OPTIONS

THE
BRAVO
1600 SQ.FT.

SELECT-4

BASEMENT DEVELOPMENT OPTION 1

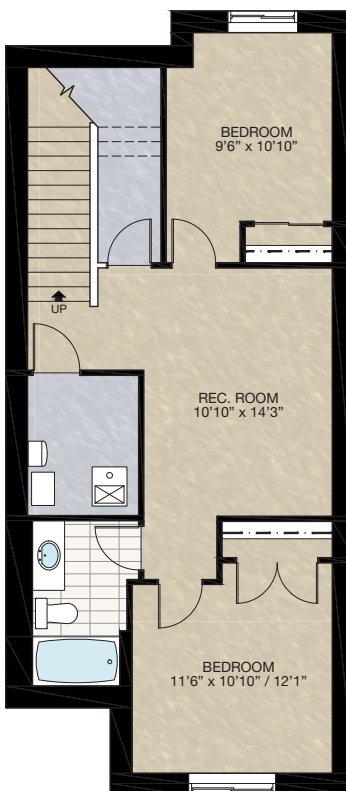
- 561 Sq.Ft. basement development
- Included finished basement stairwell
- Move 2'8" passage door from top of stairwell to mechanical room
- Add 1 riser to stairwell for 9'0" basement ceiling (8'9" headroom clearance)



SELECT-5

BASEMENT DEVELOPMENT OPTION 2

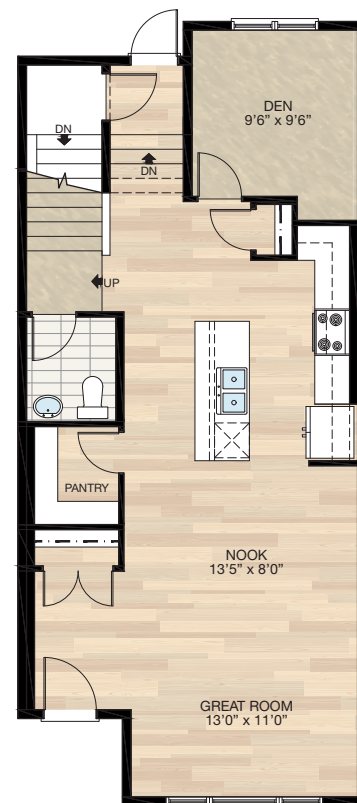
- *MUST combine with either **SELECT-2, 6, OR 7** main floor option
- 601 Sq.Ft. basement development
- Included finished basement stairwell
- Move 2'8" passage door from top of stairwell to mechanical room
- Add 1 riser to stairwell for 9'0" basement ceiling (8'9" headroom clearance)
- Add 48" x 36" window to rear



SELECT-6

MAIN FLOOR DEN OPTION

- Additional 61 Sq.Ft. to main floor (due to extension to rear of home)
- Redesigned kitchen with reduced island
- Relocate rear entrance to stairwell with part of the stair developed
- Delete 24" x 72" VSL at rear
- Add two 30" x 72" VSL & P/P window to den



Trico Homes is a local home builder, with new single and multi-family homes for sale in Calgary, Okotoks, Chestermere, Cochrane, Airdrie and DeWinton. Offering a great selection of starter, move-up, semi-estate and ultra-estate models in numerous communities, you'll find the house that's just right for you! Look for this model and many others in Ambleton, Belmont, Brawn Landing, Carrington, Chelsea, Chelsea Court Townhomes, Colours of Seton Townhomes, Cornerbrook, D'Arcy, Creek View, Dawson's Landing, Glacier Ridge, Hamilton Heights, Harmony, Homestead, Huxley, Legacy, Midtown, Pine Creek, Precedence, Rivercrest, Seton, Sirocco, Southbow Landing, Verona West Townhomes, West Springs, West83 Townhomes and Wolf Willow.

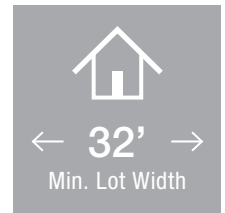


Renderings are artist's conceptions only and may vary by community and lot selection. Prices, floorplans, specifications and dimensions are approximate and are subject to change without notice. E.&O.E. © All rights reserved, including the right if reproduction in the whole or in part without the permission of Trico Homes.

Plan updated as of March 20, 2024.



tricohomes.com



3 Bedrooms

2½ Bathrooms

Double Garage

THE BRAXTON

2070 SQ.FT.

☐ Elements Specification

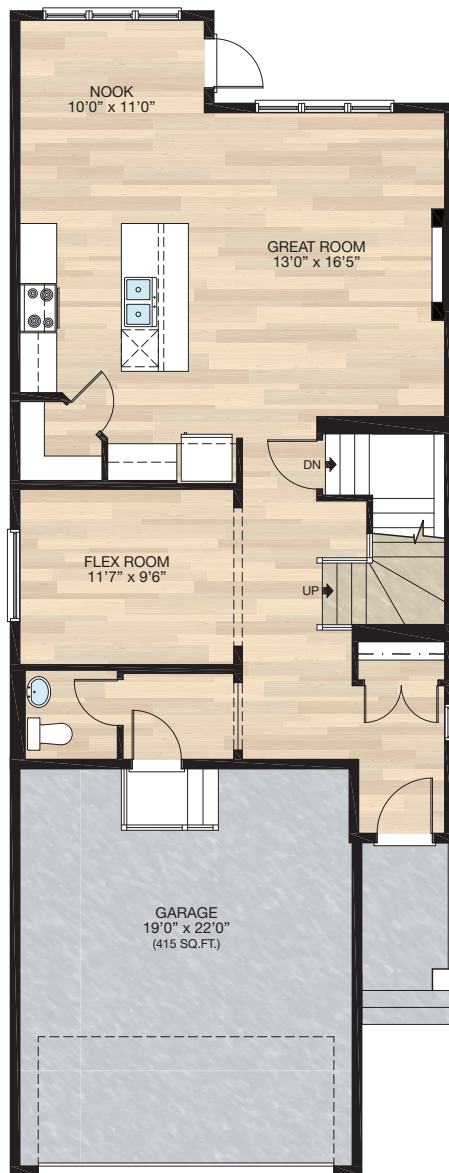
☐ Elite Specification



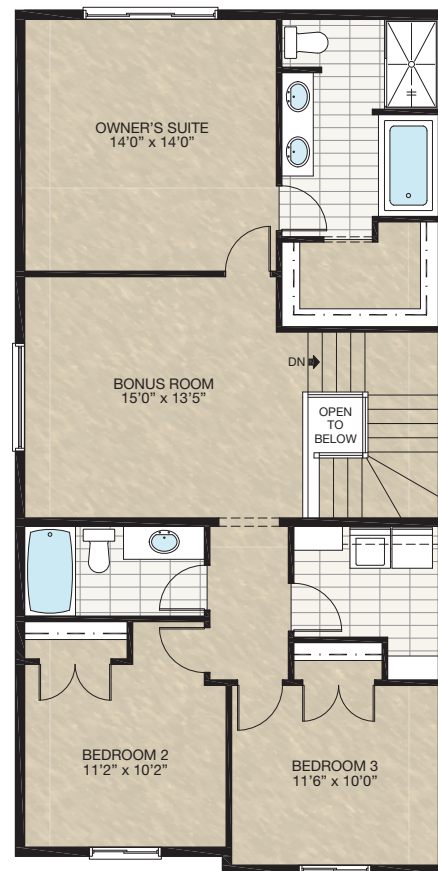
Trico Homes™
The Heart of Homebuilding®

STANDARD PLAN

THE
BRAXTON
2070 SQ.FT.



MAIN
942 SQ.FT.



UPPER
1128 SQ.FT.

HARDWOOD

DECK

CARPET

CONCRETE

TILE

LVP

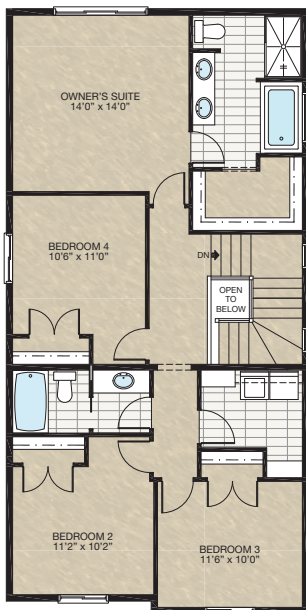
tricohomes.com

FEATURED OPTIONS



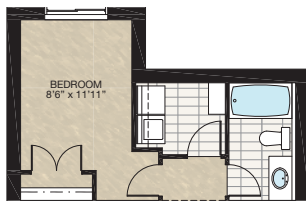
☐ **SELECT-1 BEDROOM OPTION**

- Delete Bonus Room including 72" x 24" window
- Add fourth bedroom including 48" x 48" window
- Increase vanity to 4'6"
- Add pocket door to main bath



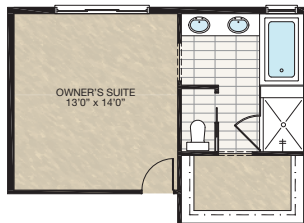
☐ **SELECT-5 BASEMENT DEVELOPMENT WHEN SELECT-4 IS CHOSEN OPTION**

- Extend bathroom vanity 6"
- Add laundry room including shelving
- IRE-design bedroom & closet



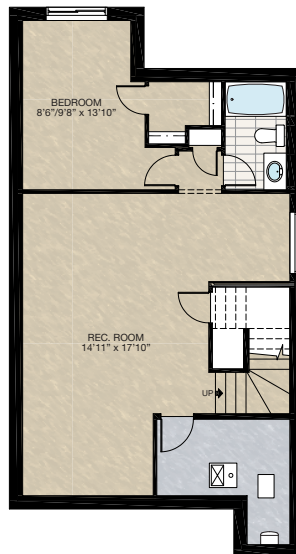
☐ **SELECT-2 ENSUITE OPTION**

- Includes 10mm glass & tile shower
 - Add 30" x 40" frosted window
 - Increase vanity to 6'2½"
 - Includes pocket door to water closet
- *Cannot be combined with **SELECT-1** or **SELECT-4**



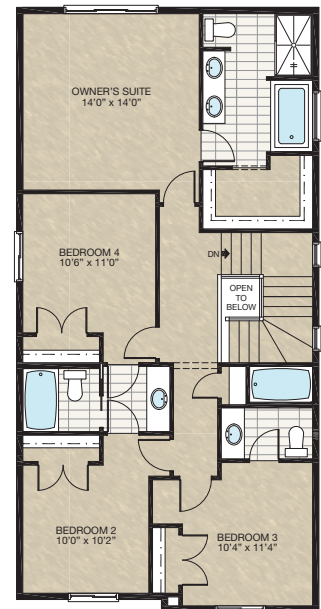
☐ **SELECT-3 BASEMENT DEVELOPMENT OPTION**

- 686 Sq.Ft. of developed area
- Add extra riser to stairwell for 9'0" basement ceiling with 8'9" headroom clearance
- Includes finished basement stairwell
- Delete 2'8" door top of stairwell



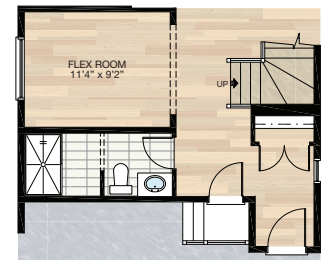
☐ **SELECT-4 FOUR BEDROOM WITH ENSUITE OPTION**

- Delete bonus room including 72" x 24" window
- Add fourth bedroom including 48" x 48" window
- Increase main bath vanity to 5'2"
- Add pocket door & swing door to main bath
- Move laundry to basement (will be placed near mechanical area)
- Create linen closet in hallway
- Add ensuite bathroom to bedroom 3



☐ **SELECT-6 FULL BATHROOM OPTION**

- Add 60" x 36" fiberglass shower and vanity to half bath
- This reduced flex room by 4"
- Move garage entrance door & stairs
- Add pot light to shower



HARDWOOD

DECK

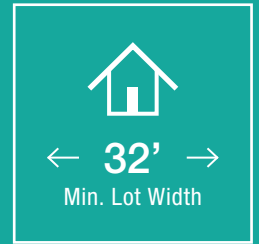
CARPET

CONCRETE

TILE

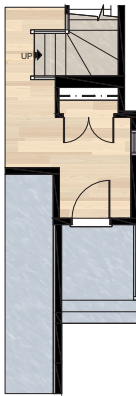
LVP

FEATURED BRAXTON OPTIONS



SELECT-9 6" WIDE FRONT ENTRY & PORCH OPTION

- Additional 9 Sq.Ft. to main floor
- Extend front entry 1'0" x 9'0" & foundation below (Intended for 34' or wider home sites)

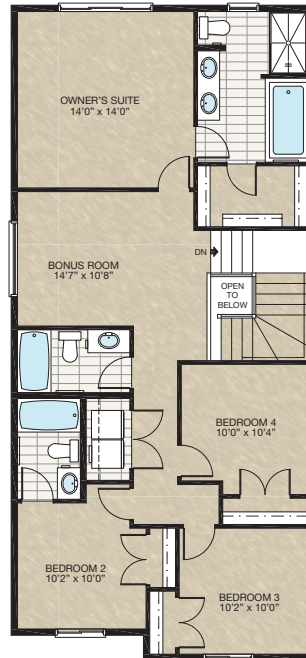


SELECT-12 4 BEDROOM & 2 ENSUITE OPTION

- Extend front which adds 85 Sq.Ft. (only 60 Sq.Ft. for Midtown Elevation)
- Redesign upper floor adding a fourth bedroom
- Add second ensuite to bedroom 2
- Delete linen from laundry
- Add double passage door to laundry closet

*This option will alter elevation and windows will be dependent on elevation chosen.

**Porch column will need to be either pulled forward off of porch and porch depth adjusted, or porch and entrance will need to be pulled out to meet AC guidelines.

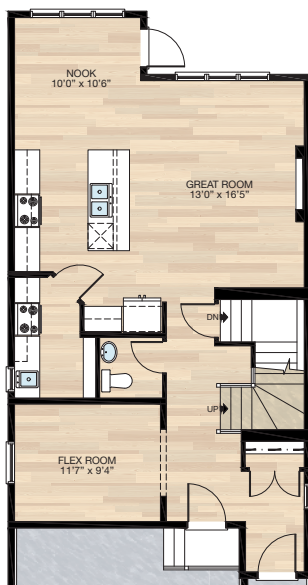


FEATURED OPTIONS

THE
BRAXTON
2070 SQ.FT.

SELECT-7 SPICE KITCHEN OPTION

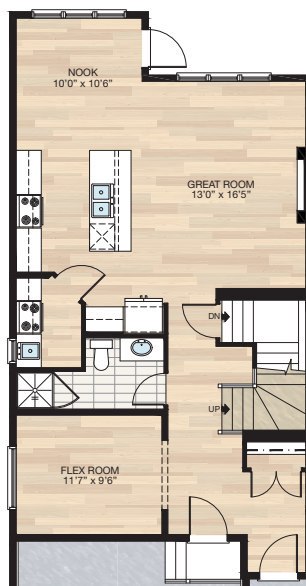
- Relocate flex room & half bath
- Delete pantry including 2'4" door
- Reduce window size in flex room to be 40" x 24"
- Add spice kitchen with 24" x 40" VSL window, range, hood fan, sink, pantry shelving & 6'11" of lower cabinets & 4'0" of upper cabinets
- Reduce kitchen cabinets 9" beside fridge
- Move garage entrance door & stairs
- Move kitchen island towards nook 6"
- Reduce island depth by 4"
- Additional 6" cabinetry next to stove at main kitchen



SELECT-8 FULL BATH & SPICE KITCHEN OPTION

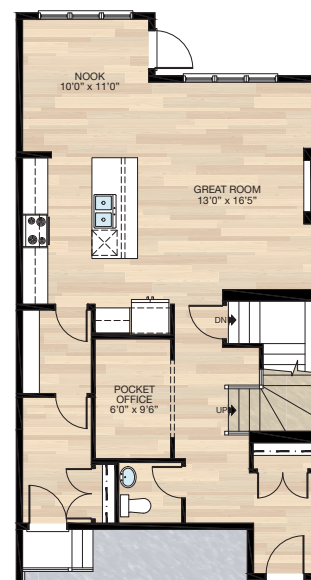
- Extend main floor into garage 1'0" adding 18 Sq.Ft. this reduces garage length to 21'0"
- Relocate flex room
- Delete pantry including 2'4" door
- Add spice kitchen with 24" x 40" VSL window, range, hood fan, sink, 4'6" of lower cabinets & 1'10" of upper cabinets, & 2'8" door
- Reduce kitchen cabinets 9" beside fridge
- Move garage entrance door & stairs
- Add 3" x 3" fibreglass shower & 42" vanity
- Move kitchen island towards nook 6"
- Reduce island depth by 4"
- Additional 6" cabinetry next to stove at main kitchen

This option will require foundation changes



SELECT-10 WALK-THROUGH PANTRY OPTION

- Flex room becomes pocket office
- Walk-through pantry & mud room are created
- Increase kitchen cabinets 1'5½"
- Move garage entrance door & stairs
- Delete 60" x 24" P window



Trico Homes is a local home builder, with new single and multi-family homes for sale in Calgary, Okotoks, Chestermere, Cochrane, Airdrie and DeWinton. Offering a great selection of starter, move-up, semi-estate and ultra-estate models in numerous communities, you'll find the house that's just right for you! Look for this model and many others in Ambleton, Arbour Lake, Belmont, Carrington, Chelsea, Cornerbrook, D'Arcy, Dawson's Landing, Glacier Ridge, Hamilton Heights, Homestead, Legacy, Midtown, Pine Creek, Precedence, Rivercrest, Seton, Sirocco, Verona West Townhomes, West83 Townhomes and Wolf Willow.

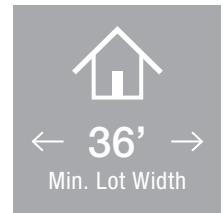



Renderings are artist's conceptions only and may vary by community and lot selection. Prices, floorplans, specifications and dimensions are approximate and are subject to change without notice. E.&O.E. © All rights reserved, including the right if reproduction in the whole or in part without the permission of Trico Homes.


Plan updated as of March 22, 2023.



tricohomes.com



 3 Bedrooms

 2½ Bathrooms

 Double Garage

THE CAMBRIDGE 28

2443 SQ.FT.

☐ Elements Specification

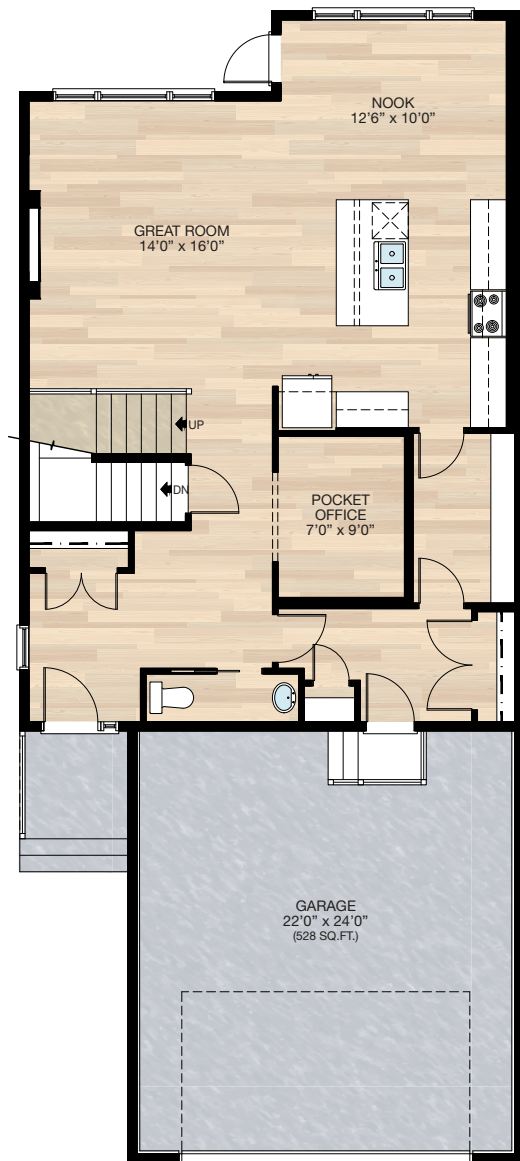
☐ Elite Specification



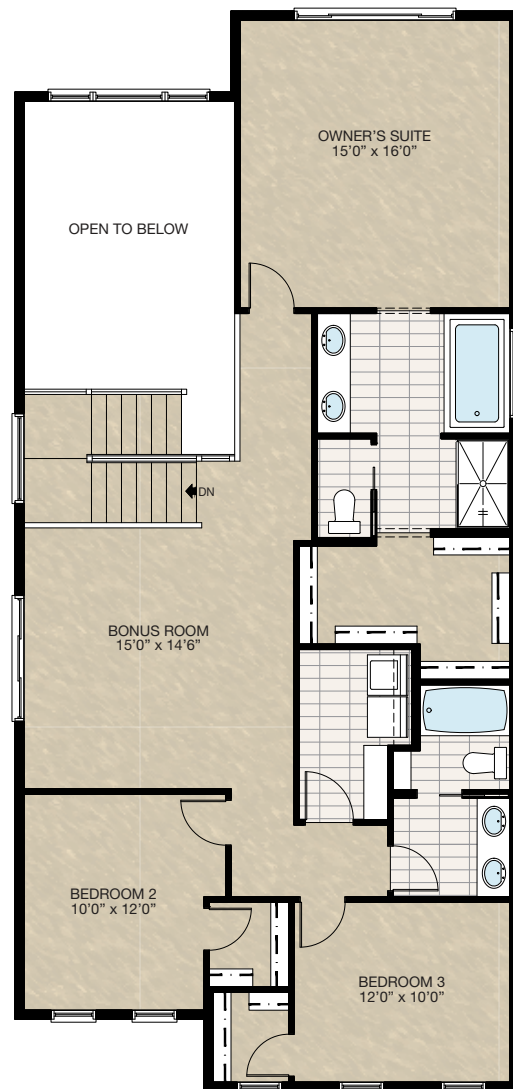
Trico Homes™
The Heart of Homebuilding®

STANDARD PLAN

THE
CAMBRIDGE 28
2443 SQ.FT.



MAIN
1057 SQ.FT.



UPPER
1386 SQ.FT.

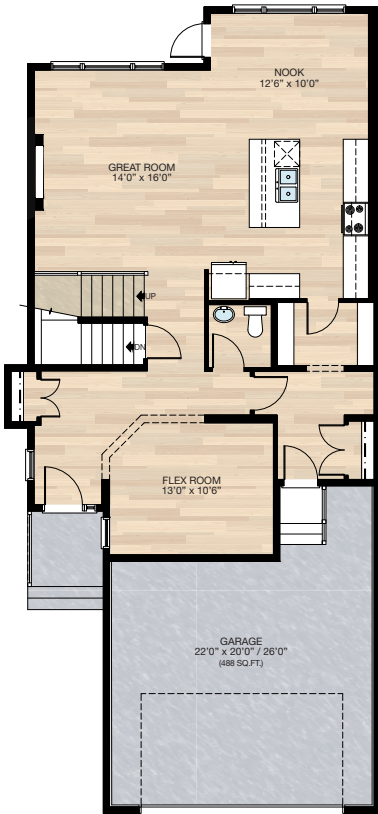


FEATURED OPTIONS



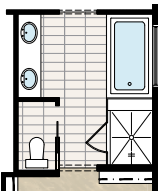
SELECT-1 FLEX ROOM OPTION

- Add 49 sq.ft.
- Delete pocket office & add flex room
- Relocate half bath
- Cantilever front entry closet
- Add 30" x 72" VSL to flex room
- Revisions to foundation including post location



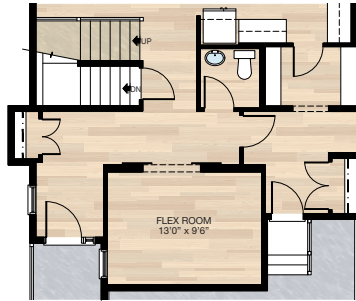
SELECT-6 GLASS & TILE SHOWER OPTION

- Delete fibreglass shower
- Add 44" x 52" tile & 10mm glass shower
- Extend tub deck 12" for shower bench



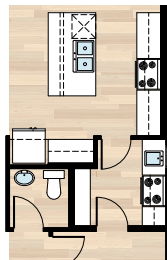
SELECT-2 BARN DOORS TO FLEX ROOM OPTION

- Must be combined with **SELECT-1**
- Add barn doors to flex room



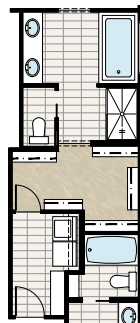
SELECT-4 SPICE KITCHEN OPTION

- Must be combined with **SELECT-1**
- Delete one section of pantry shelves
- Delete 30" of upper & lower cabinets in kitchen
- Add spice kitchen including range, hoodfan, sink, & upper & lower cabinets
- Add 24" x 40" VSL window
- Delete 2'6" door & add 2'8" door



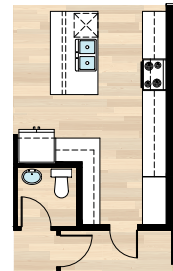
SELECT-5 ACCESS TO LAUNDRY FROM WIC OPTION

- Delete 28" of closet shelving
- Add 2'4" door
- Add two 3-way switches



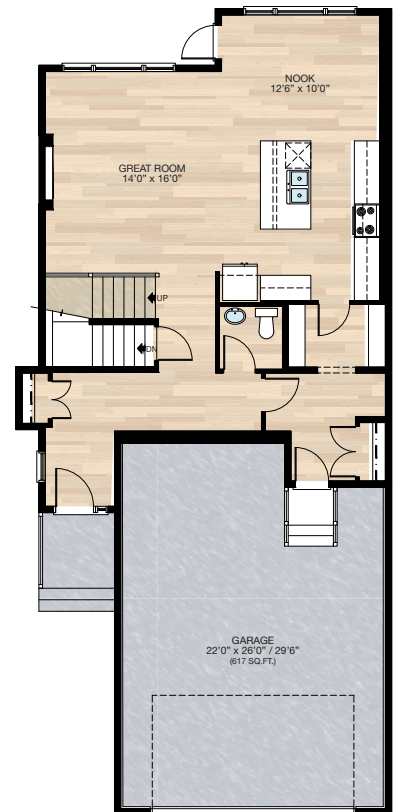
SELECT-3 KITCHEN OPTION

- Must be combined with **SELECT-1**
- Delete pantry
- Add cabinet pantry
- Additional cabinetry
- Add two pendant lights over the island



SELECT-7 TANDEM GARAGE OPTION

- Must be combined with **SELECT-1**
- Remove 128 sq.ft. from house
- Revisions to foundation including post location



HARDWOOD

DECK

CARPET

CONCRETE

TILE

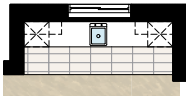
LVP

FEATURED CAMBRIDGE 28 OPTIONS

THE
CAMBRIDGE 28
2443 SQ.FT.

SELECT-11 BASEMENT WET BAR OPTION

- Includes upper & lower cabinets
- Includes dishwasher, sink & opening for bar fridge
- Flooring is changed to tile
- Two down lights & switch added

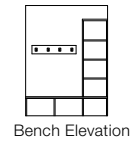
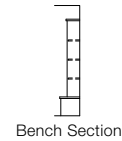


SELECT-13 BASEMENT DEVELOPMENT OPTION

- 797 Sq.Ft. basement development
- Includes finished basement stairwell
- Delete 2'8" passage door at top of stairwell
- Add 1 riser to stairwell for 9'0" basement ceiling (8'9" headroom clearance)
- Two 60" x 24" windows change to 60" x 36" & 40" x 40"
- Side window location moved due to cantilever above
- Bathroom & furnace location changed slightly
- *Can only be combined with **SELECT-1**

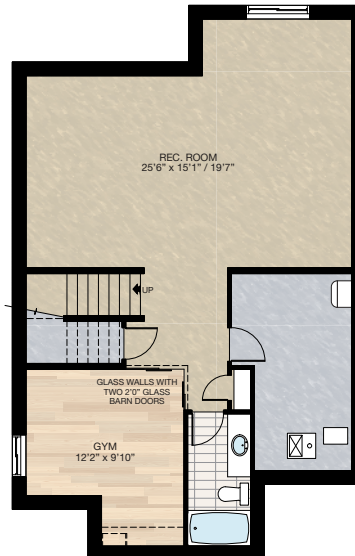
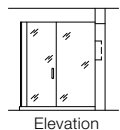
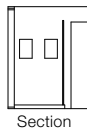
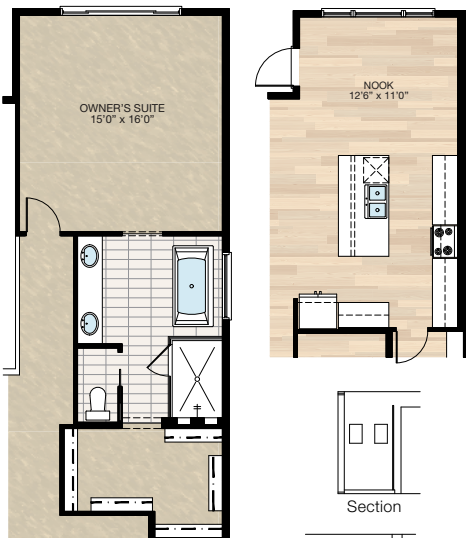
SELECT-13A MDF BENCH & CUBBIES OPTION

*Can only be combined with **SELECT-13**



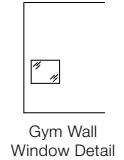
SELECT-12 NOOK / ENSUITE OPTION

- Extend nook, upper floor & foundation 2'
- This adds 28 sq.ft. to main floor & 32 sq.ft. upper floor
- 12" is added to kitchen upper & lower cabinets as well as the island, 12" is added to the nook
- Upper floor space added to ensuite & walk-in closet
- Delete 60" x 36" soaker tub & 36" x 60" fiberglass shower
- Add 72" x 36" free standing tub & 48" x 72" 10 mm glass & tile shower with niches
- Vanity increased to 8'
- Add light over tub



SELECT-13B PLAY SPACE OPTION

- Develop 43 sq.ft. under basement stairs
- Includes 27" x 22" interior window
- *Can only be combined with **SELECT-13**



SELECT-14 OWNER'S SUITE BALCONY OPTION

- Add 12'0" x 4'6" balcony off Owner's Suite
- Includes vinyl decking, aluminum railing & soffit to u/s of balcony
- Add 2'8" full french door, WP plug & exterior light with switch
- Open to below window moved up to match height of upper floor windows
- Main floor exterior light deleted & 2 down lights added



HARDWOOD

DECK

CARPET

CONCRETE

TILE

LVP

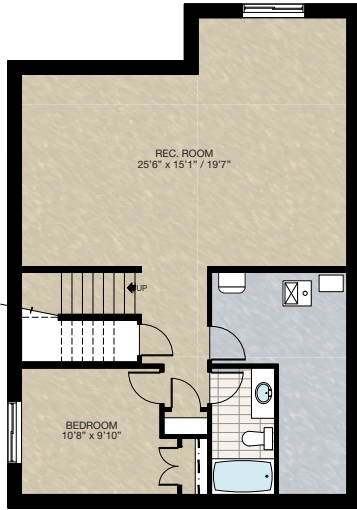
tricohomes.com

FEATURED OPTIONS

THE
CAMBRIDGE 28
2443 SQ.FT.

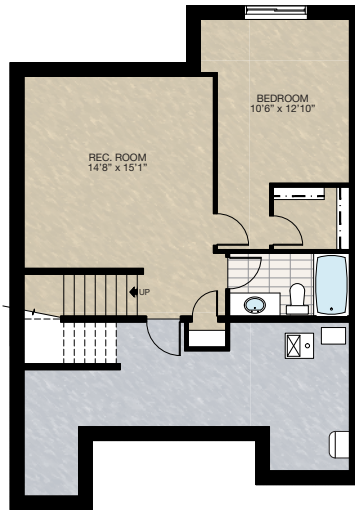
SELECT-8 **BASEMENT DEVELOPMENT OPTION 1**

- 752 Sq.Ft. basement development
- Includes finished basement stairwell
- Delete 2'8" passage door at top of stairwell
- Add one riser to stairwell for 9'0" basement ceiling (8'9" headroom clearance)
- Two 60" x 24" windows change to two 60" x 36"
- Cannot be combined with any main floor options



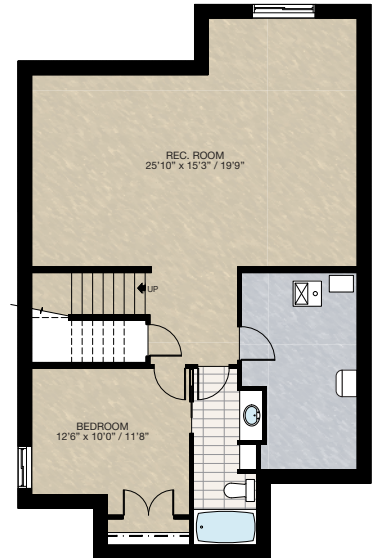
SELECT-9 **BASEMENT DEVELOPMENT OPTION 2**

- 559 Sq.Ft. basement development
- Includes finished basement stairwell
- Delete 2'8" passage door at top of stairwell
- Add one riser to stairwell for 9'0" basement ceiling (8'9" headroom clearance)
- Delete one 60" x 24" window
- Change one 60" x 24" window to 60" x 36"
- Can only be combined with **SELECT-7**



SELECT-10 **BASEMENT DEVELOPMENT OPTION 3**

- 797 Sq.Ft. basement development
- Includes finished basement stairwell
- Delete 2'8" passage door at top of stairwell
- Add one riser to stairwell for 9'0" basement ceiling (8'9" headroom clearance)
- Two 60" x 24" windows change to 60" x 36" & 40" x 40"
- Can only be combined with **SELECT-1**



Trico Homes is a local home builder, with new single and multi-family homes for sale in Calgary, Okotoks, Chestermere, Cochrane, Airdrie and DeWinton. Offering a great selection of starter, move-up, semi-estate and ultra-estate models in numerous communities, you'll find the house that's just right for you! Look for this model and many others in Ambleton, Arbour Lake, Belmont, Carrington, Chelsea, Cornerbrook, D'Arcy, Dawson's Landing, Glacier Ridge, Hamilton Heights, Homestead, Legacy, Midtown, Pine Creek, Precedence, Rivercrest, Seton, Sirocco, Verona West Townhomes, West83 Townhomes and Wolf Willow.

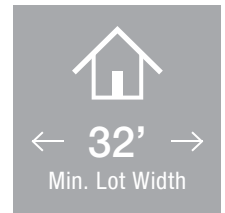


Renderings are artist's conceptions only and may vary by community and lot selection. Prices, floorplans, specifications and dimensions are approximate and are subject to change without notice. E.&O.E. © All rights reserved, including the right if reproduction in the whole or in part without the permission of Trico Homes.

Plan updated as of October 04, 2024.



tricohomes.com



- 3 Bedrooms
- 2½ Bathrooms
- Double Garage

THE CONCORD

2280 SQ.FT.

☐ Elements Specification ☐ Elite Specification



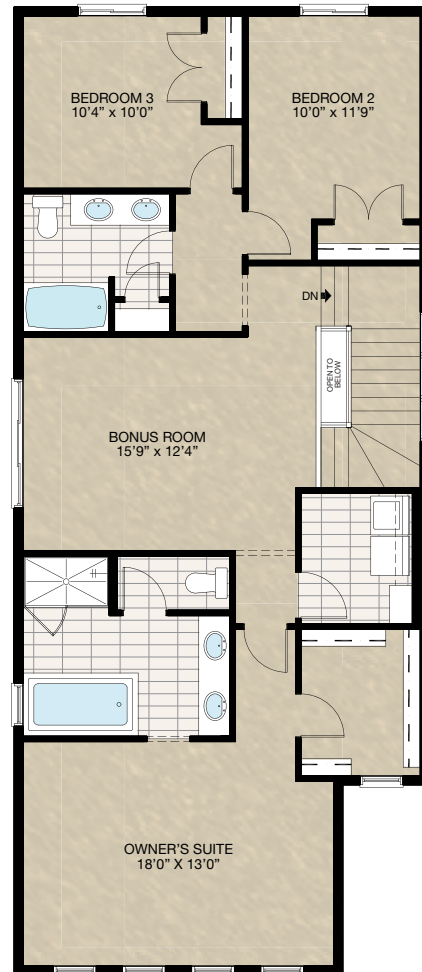
Trico Homes™
The Heart of Homebuilding®

STANDARD PLAN

THE
CONCORD
2280 SQ.FT.



MAIN
1000 SQ.FT.



UPPER
1280 SQ.FT.



FEATURED OPTIONS

← 32' →
Min. Lot Width

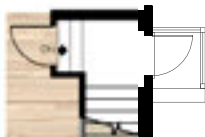
SELECT-1 SPICE KITCHEN OPTION

- Mech. void space end of kitchen cabinet moved towards nook 12"
- Delete 14" upper & lower cabinet in main kitchen
- Delete (8) 16" wire shelves in pantry
- Add (6) 12" wire shelves in spice kitchen
- Add 24" x 40" VSL
- Delete 2'4" door
- Add 2'8" pocket door



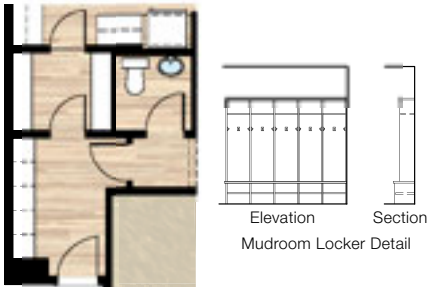
SELECT-4 SIDE ENTRANCE OPTION

- Add 2'8" exterior door
- Add concrete porch with aluminum railing (up to 2 risers)
- Add switch & exterior light to side entrance
- Add one 3-way switch

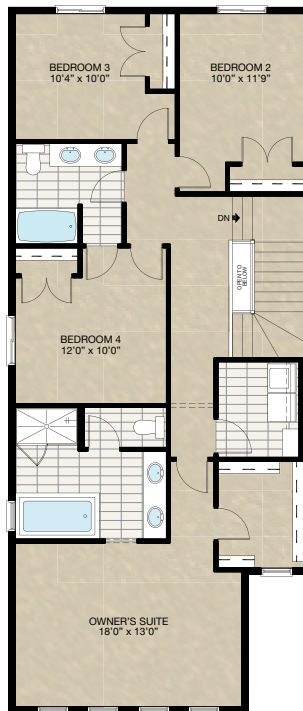


SELECT-2 MUDROOM LOCKER OPTION

- Delete 24" x 60" 8" window in mudroom
- Delete closet in mudroom



SELECT-5 UPPER FLOOR FOUR BEDROOM OPTION



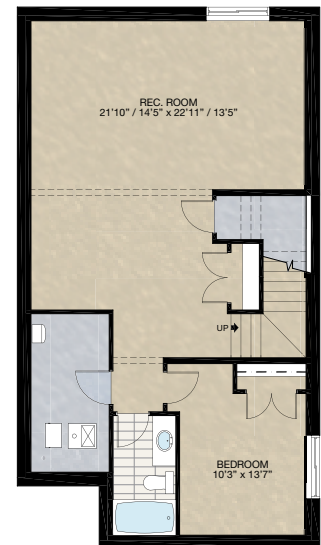
SELECT-3 DEN OPTION

- Add 2'6" French door



SELECT-6 BASEMENT DEVELOPMENT OPTION

- 750 Sq.Ft. of basement development
- Includes finished basement stairwell
- Move 2'8" passage door from top of stairwell to mech. room
- Add 1 riser to stairwell for 9' basement ceiling (8'9" headroom clearance)
- 60" x 24" Windows changed to 60" x 36"



HARDWOOD

DECK

CARPET

CONCRETE

TILE

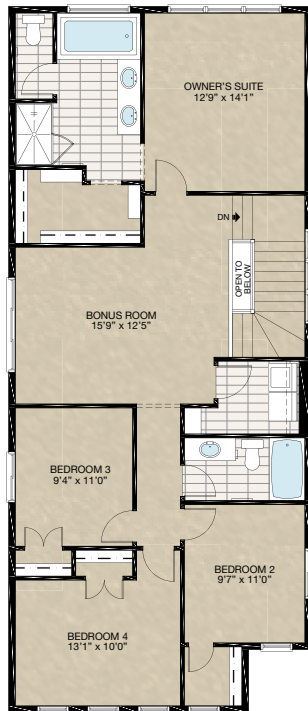
LVP

FEATURED CONCORD OPTIONS



SELECT-10 UPPER FLOOR 4 BEDROOMS WITH BONUS ROOM OPTION

- Additional 30 sq.ft. to upper floor over front porch area
- Delete 30" x 40" P window at ensuite
- Add 60" x 40" P window to ensuite
- Add three 30" x 60" VSL / $\frac{7}{8}$ / $\frac{5}{8}$ windows to master bedroom
- Moved both 48" x 40" VSL windows from rear to sides



SELECT-11 UPPER FLOOR OPTION

- Redesign upper floor
- Additional 30 sq.ft. to upper floor over front porch area
- Delete 30" x 40" P window at ensuite
- Add 48" x 40" P window to ensuite
- Add three 30" x 60" VSL / $\frac{7}{8}$ / $\frac{5}{8}$ windows to master bedroom
- Delete two 48" x 40" windows from rear
- Delete 30" x 60" from master bedroom
- Delete 30" x 30" from master walk-in closet
- Add 30" x 60" VSL to Bedroom 3



SECONDARY SUITE OPTION 1

- 727 Sq.Ft. basement development
- Included finished basement stairwell
- Add 2'8" side entrance door & exterior light at stairwell
- Upgraded stairwell switches to 4-way
- Add 1 riser to stairwell for 9'0" basement ceiling (8'9" headroom clearance)
- Upgrade both basement windows from 60" x 24" to 60" x 36"
- Includes washer & dryer rough-in only
- * Subject to grading max. 1 riser permitted, no steps can be added
- * CANNOT be combined with SELECT-7 & 8



HARDWOOD

DECK

CARPET

CONCRETE

TILE

LVP

FEATURED CONCORD OPTIONS

THE
CONCORD
2280 SQ.FT.

SECONDARY SUITE OPTION 2

- 716 Sq.Ft. basement development
- Included finished basement stairwell
- Add 2'8" side entrance door & exterior light at stairwell
- Upgraded stairwell switches to 4-way
- Add 1 riser to stairwell for 9'0" basement ceiling (8'9" headroom clearance)
- Upgrade both basement windows from 60" x 24" to 60" x 36"
- Includes washer & dryer rough-in only
- * Subject to grading max. 1 riser permitted, no steps can be added
- * MUST be combined with **SELECT-7, 8 or 12**



SECONDARY SUITE OPTION 3 FOR SELECT #13 ONLY

- 699 Sq.Ft. basement development
- Included finished basement stairwell
- Add 2'8" side entrance door & exterior light at stairwell
- Upgraded stairwell switches to 4-way
- Add 1 riser to stairwell for 9'0" basement ceiling (8'9" headroom clearance)
- Upgrade both basement windows from 60" x 24" to 60" x 36"
- Front entry extended out 10" toward the front
- Additional 4 sq.ft. to **SELECT-13** main floor
- Delete main floor bedroom 30" x 72" VSL window
- Add 24" x 72" VSL window to main floor bedroom
- Includes washer & dryer rough-in only
- * MUST be long side zero
- * Subject to grading max. 1 riser permitted, no steps can be added
- * MUST be combined with **SELECT-13** main floor bedroom with bath & mudroom option



SELECT-12 SPICE KITCHEN & MAIN FLOOR BEDROOM OPTION

- Mech. void space end of kitchen cabinet moved towards nook 12"
- Deleted 14" upper & lower cabinet in main kitchen
- Deleted (8) 16" wire shelves in pantry
- Added (6) 12" wire shelves in spice kitchen
- Added 24" x 40" VSL window to spice kitchen
- Deleted 2'4" door to pantry
- Added 2'8" door to spice kitchen
- Deleted 24" x 60" P window in mudroom
- Add 48" x 40" HSL window to bedroom
- Walk-in closet to front entry
- Deleted half bath
- Added 3-piece bath
- Relocate garage stairs



HARDWOOD

DECK

CARPET

CONCRETE

TILE

LVP

FEATURED CONCORD OPTIONS



SELECT-13 MAIN FLOOR BEDROOM WITH BATH & MUDROOM OPTION

- Total main floor area reduced by 9 sq.ft.
- Recessed front entrance 4'0" into house (reduced 20 sq.ft.)
- Add closet to bedroom by reducing the garage entrance space (add 11 sq.ft.)
- Add 30" x 72" VSL window to bedroom
- Delete half bath
- Add 3-piece bath
- Relocate mech. space & closet at mudroom to opposite side

*Note: MUST combine **SELECT-14** porch option for community required min. 12'0" distance between porch & front face of garage

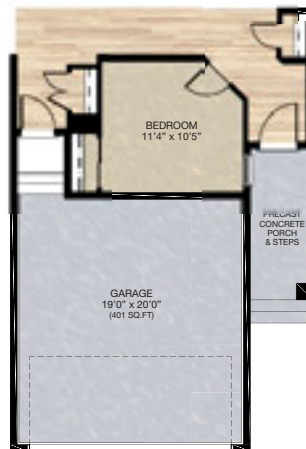
*Note: CANNOT combined with **SELECT-5 & 9** and Secondary Suite



SELECT-14 FRONT PORCH OPTION

*This option is ONLY available with **SELECT-13**
• Additional 4'-0" length to the concrete porch and concrete wing wall below

Note: 2-Piece concrete required with seam



SELECT-15 ENSUITE OPTION

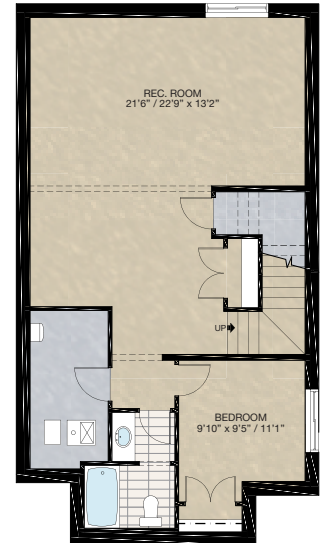
- Relocate ensuite entrance
- Additional 20" vanity
- Delete 60" x 36" acrylic shower base with tiled walls & 5mm glass door
- Add 60" x 36" tiled shower with 10mm glass & door
- Delete 30" x 40" P frosted window
- Add 60" x 40" P frosted window

*CANNOT combined with **SELECT-10 & 11** upper floor options



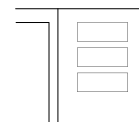
SELECT-16 BASEMENT DEVELOPMENT OPTION FOR SELECT-13

- 646 Sq.Ft. basement development
- Included finished basement stairwell
- Move 2'8" passage door from top of stairwell to mech. room
- Add 1 riser to stairwell for 9'0" basement ceiling (8'9" headroom clearance)



SELECT-17 FLEX ROOM WALL CUT-OUT OPTION

- Delete 30" x 60" P glass insert at flex room
- Add wall cut-out with 3" pucklights to each cut-out



(Flex Room View)
Flex Room Wall Cut-Out Detail

HARDWOOD

DECK

CARPET

CONCRETE

TILE

LVP

FEATURED CONCORD OPTIONS

THE
CONCORD
2280 SQ.FT.

SELECT-18 KITCHEN OPTION

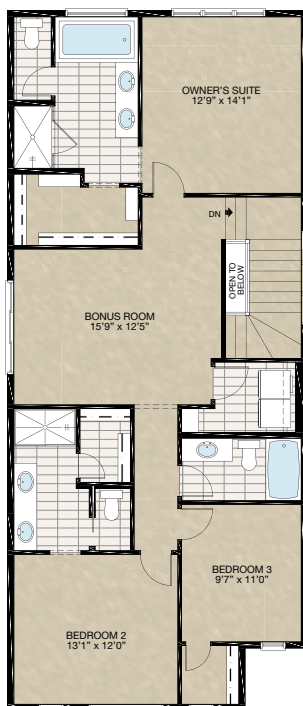
- Move mech. void space towards nook 2'0"
- Reduced nook space
- Additional 2'0" cabinetry to kitchen
- Delete standard kitchen island
- Add 4'0" x 6'0" kitchen island with one side eating bar

*CANNOT be combined with **SELECT-7** main floor bedroom options



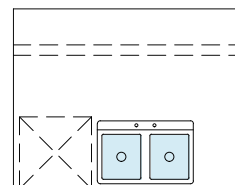
SELECT-19 DUAL ENSUITE WITH 3 UPPER FLOOR BEDROOMS OPTION

- Additional 30 sq.ft. to upper floor over front porch area
 - Delete 30" x 40" P window at ensuite
 - Add 60" x 40" P window to ensuite
 - Add three 30" x 60" VSL / $\frac{1}{2}$ / $\frac{1}{2}$ windows to owner's suite
 - Change stairwell light switch from 3-way to 4-way both main & upper floor & add 4-way switch at bonus room
- * Note: porch extension may be required to support upper floor if porch is under 8'-0" deep
- * Note: Bedroom 3 closet may be different in size due to elevation chosen
- * Note: Bedroom 3 may be required to upgrade to an egress window (elevations dependent)



SELECT-20 ALTERNATIVE KITCHEN ISLAND OPTION

- Delete the second side of eating bar
- Additional 10" cabinetry next to sink
- No changes to countertop size



HARDWOOD

DECK

CARPET

CONCRETE

TILE

LVP

tricohomes.com

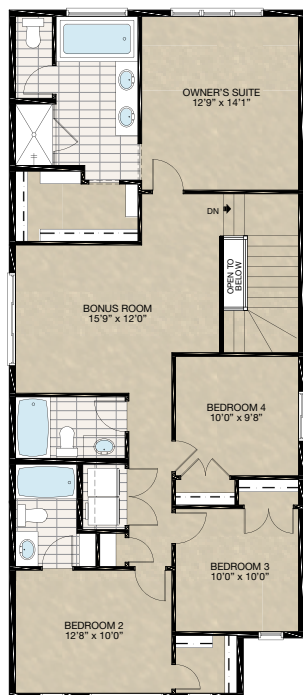
FEATURED CONCORD OPTIONS



SELECT-21

UPPER FLOOR 4 BEDROOMS & 3 BATHS WITH BONUS ROOM OPTION

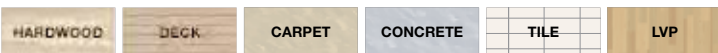
- Additional 30 sq.ft. to upper floor over front porch area
- Delete 30" x 40" P window at ensuite
- Add 60" x 40" P window to ensuite
- Add three 30" x 60" VSL / $\frac{1}{2}$ / $\frac{1}{2}$ windows to Owner's Suite
- Delete one 48" x 40" HSL window at rear & relocate one 48" x 40" HSL window to Bedroom 4
- Change stairwell light switch from 3-way to 4-way both main & upper floor & add 4-way switch at Bonus Room
- * Note: Porch extension may be required to support upper floor if porch is under 8'0" deep
- * Note: Bedroom 2 closet may be different in size due to elevation chosen
- * Note: Bedroom 3 may be required to upgrade to an egress window (elevations dependent)



SELECT-22

6'0" WIDE FRONT ENTRY + PORCH OPTION

- Additional 15 sq.ft. to main floor (extend front entry 1'0", 15'3" & foundation below)
 - Extend front porch width by 1'0"
- *Note: **ONLY** for lot width 34'0" or wider in Wolf Willow (river & Fish Creek Park) homesites



FEATURED OPTIONS

THE
CONCORD
2280 SQ.FT.

SELECT-7 FAMILY ROOM OPTION

- Delete 24" x 60" P window & mudroom
- Add 60" x 24" P window to family room
- Change standard closet to walk-in closet to front entry
- Relocate garage stairs



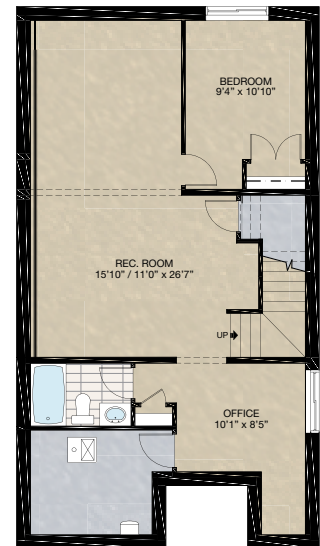
SELECT-8 MAIN FLOOR BEDROOM OPTION

- Delete 24" x 60" P window & mudroom
- Add 48" x 40" HSL window to bedroom
- Walk-in closet to front entry
- Add 3-piece bath
- Relocate garage stairs



SELECT-9 BASEMENT DEVELOPMENT FOR SELECT-7, 8 & 12 OPTION

- 741 Sq.Ft. of developed area
- Includes finished basement stairwell
- Move 2'8" passage door from top of stairwell to mech. room
- Add 1 riser to stairwell for 9'0" basement ceiling (8'9" headroom clearance)
- 60" x 24" Windows changed to 60" x 36"



Trico Homes is a local home builder, with new single and multi-family homes for sale in Calgary, Okotoks, Chestermere, Cochrane, Airdrie and DeWinton. Offering a great selection of starter, move-up, semi-estate and ultra-estate models in numerous communities, you'll find the house that's just right for you! Look for this model and many others in Ambleton, Belmont, Brawn Landing, Carrington, Chelsea, Chelsea Court Townhomes, Colours of Seton Townhomes, Cornerbrook, D'Arcy, Creek View, Dawson's Landing, Glacier Ridge, Hamilton Heights, Harmony, Homestead, Huxley, Legacy, Midtown, Pine Creek, Precedence, Rivercrest, Seton, Sirocco, Southbow Landing, Verona West Townhomes, West Springs, West83 Townhomes and Wolf Willow.

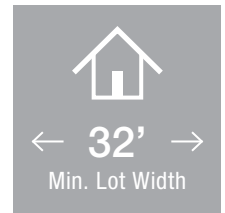



Renderings are artist's conceptions only and may vary by community and lot selection. Prices, floorplans, specifications and dimensions are approximate and are subject to change without notice. E.&O.E. © All rights reserved, including the right of reproduction in the whole or in part without the permission of Trico Homes.


Plan updated as of March 20, 2024.



tricohomes.com



 3 Bedrooms

 2½ Bathrooms

 Double Garage

THE ENCORE

2309 SQ.FT.

☐ Elements Specification

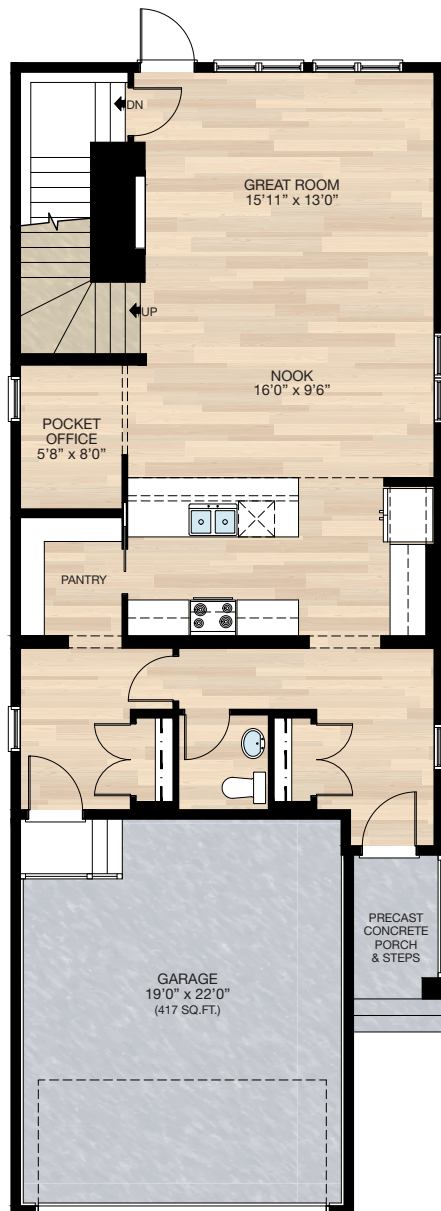
☐ Elite Specification



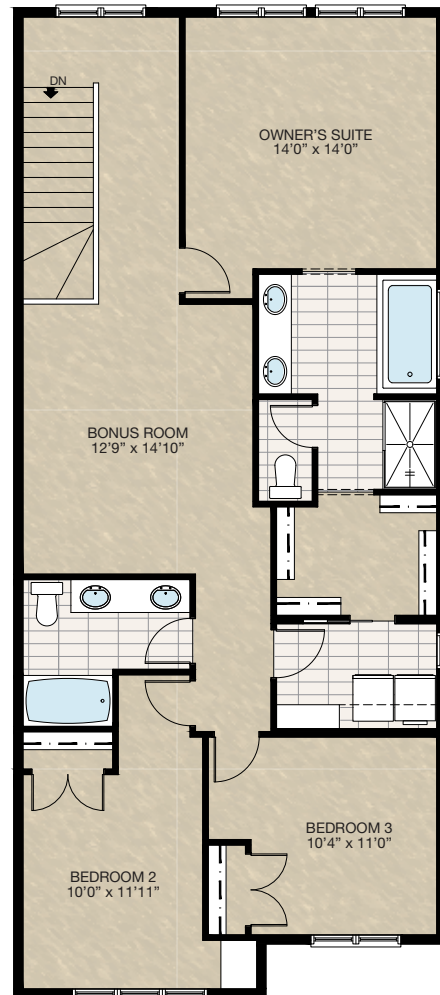
Trico Homes™
The Heart of Homebuilding®

STANDARD PLAN

THE
ENCORE
2309 SQ.FT.



MAIN
1019 SQ.FT.



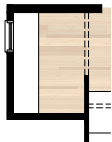
UPPER
1290 SQ.FT.



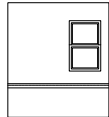
FEATURED OPTIONS

← 32' →
Min. Lot Width

SELECT-1 POCKET OFFICE MDF BUILT-IN DESK OPTION

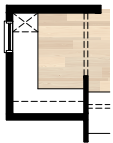


PLAN VIEW

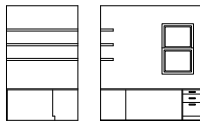


ELEVATION VIEW

SELECT-2 POCKET OFFICE BUILT-IN DESK OPTION



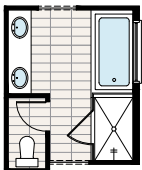
PLAN VIEW



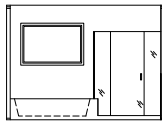
ELEVATION VIEW

SELECT-3 ENSUITE OPTION

- *CANNOT be combined with **SELECT-13 or 14** option
- Delete standard 36" x 60" fiberglass shower
 - Add 40" x 60" tiled shower with 10mm glass
 - Extend tub tiled ledge by 3.5" next to shower
 - Relocate towel bar to opposite side of tub



SHOWER & TUB
PLAN VIEW

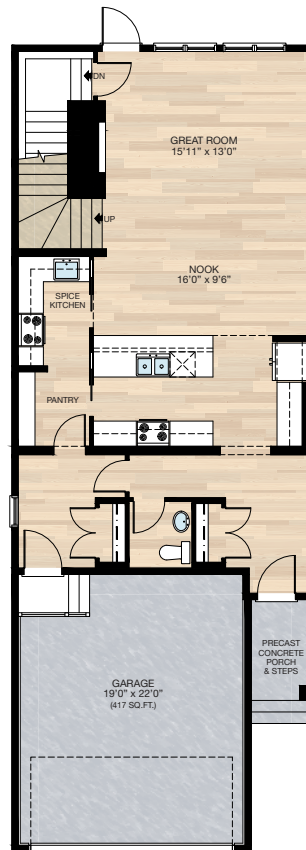


SHOWER & TUB
ELEVATION VIEW

SELECT-4 SPICE KITCHEN OPTION

*CANNOT be combined with other main floor options

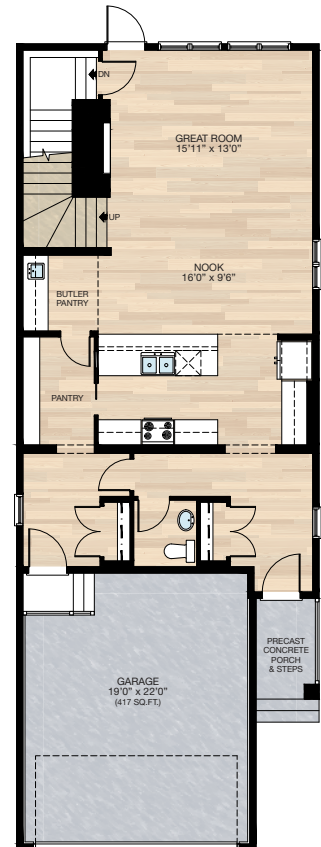
- Delete pocket office
- Add 2'8" pocket door to spice kitchen
- Reduced pantry shelving
- Delete 30" x 36" VSL window



SELECT-5 BUTLER PANTRY OPTION

*CANNOT be combined with other main floor options

- Delete pocket office
- Reduced pantry shelving
- Add 2'4" door to pantry
- Add 6'0" upper & lower cabinetry with bar sink
- Delete 30" x 36" VSL window



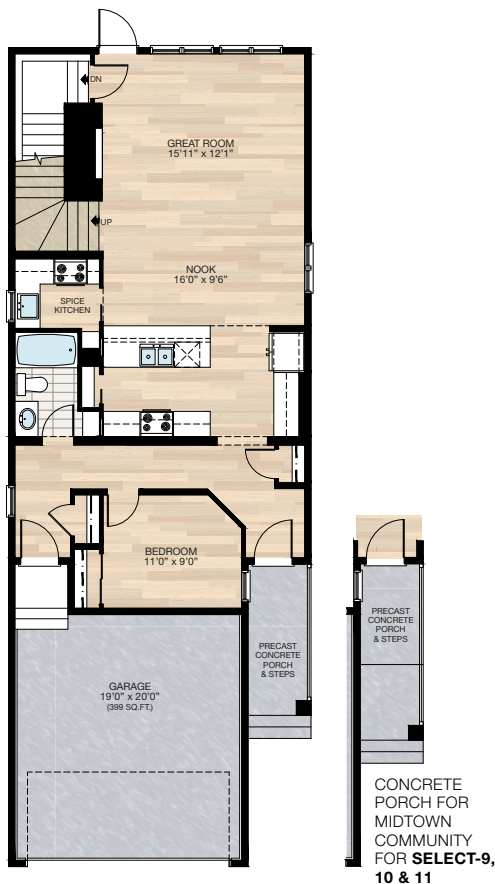
FEATURED ENCORE OPTIONS



SELECT-9

MAIN FLOOR BEDROOM WITH FULL BATH & SPICE KITCHEN OPTION

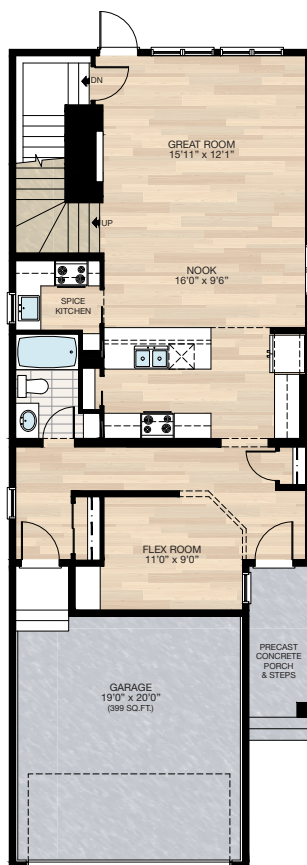
- *CANNOT be combined with other main floor options
- Additional 22 sq.ft. to main floor (*except midtown community additional 10 sq.ft.) total main floor area 1041 sq.ft.
- Extend main floor space into the garage
- Recessed front entrance 4'0" to allow for window to main floor bedroom
- Recessed mudroom entrance 1'0"
- 1'0" Extension to garage length
- Delete 5'0" x 8'0" concrete porch & steps
- Add 5'0" x 12'0" concrete landing with bolt on risers (for Midtown community, add 5'0" x 14'0" two piece concrete porch & step with seam due to area requirement distance between porch and garage to be max. 10'0")
- Kitchen island reduced 12"
- 12" Upper & lower cabinetry reduced next to stove
- Delete 30" x 72" P window at foyer
- Reduced side window from 30" x 48" VSL to 30" x 36" VSL



SELECT-10

MAIN FLEX ROOM WITH FULL BATH & SPICE KITCHEN OPTION

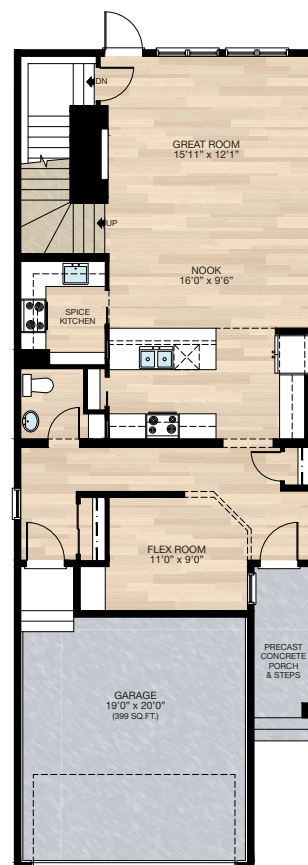
- *CANNOT be combined with other main floor options
- Additional 22 sq.ft. to main floor (*except midtown community additional 10 sq.ft.) total main floor area 1041 sq.ft.
- Extend main floor space into the garage
- Recessed front entrance 4'0" to allow for window to main floor bedroom
- Recessed mudroom entrance 1'0"
- 1'0" extension to garage length
- Delete 5'0" x 8'0" concrete porch & steps
- Add 5'0" x 12'0" concrete landing with bolt on risers (for Midtown community, add 5'0" x 14'0" two piece concrete porch & step with seam due to area requirement distance between porch and garage to be max. 10'0")
- Kitchen island reduced 12"
- 12" Upper & lower cabinetry reduced next to stove
- Add three 24" MDF shelves to flex room
- Delete 30" x 72" P window at foyer
- Reduced side window from 30" x 48" VSL to 30" x 36" VSL



SELECT-11

MAIN FLOOR FLEX ROOM WITH SPICE KITCHEN OPTION

- *CANNOT be combined with other main floor options
- Additional 22 sq.ft. to main floor (*except midtown community additional 10 sq.ft.) total main floor area 1041 sq.ft.
- Extend main floor space into the garage
- Recessed front entrance 4'0" to allow for window to main floor bedroom
- Recessed mudroom entrance 1'0"
- 1'0" Extension to garage length
- Delete 5'0" x 8'0" concrete porch & steps
- Add 5'0" x 12'0" concrete landing with bolt on risers (for Midtown community, add 5'0" x 14'0" two piece concrete porch & step with seam due to area requirement distance between porch and garage to be max. 10'0")
- Kitchen island reduced 12"
- 12" Upper & lower cabinetry reduced next to stove
- Add three 24" MDF shelves to flex room
- Delete 30" x 72" P window at foyer
- Delete 30" x 36" VSL window



HARDWOOD

DECK

CARPET

CONCRETE

TILE

LVP

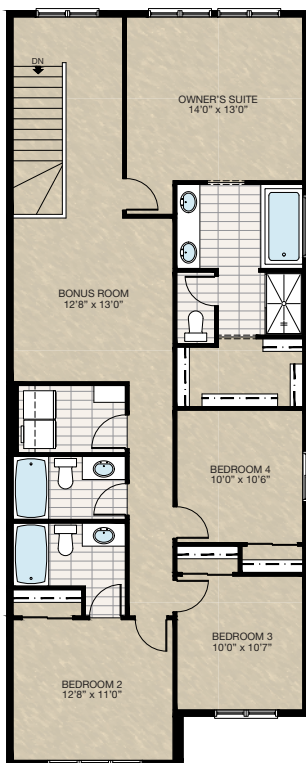
FEATURED ENCORE OPTIONS

THE
ENCORE
2309 SQ.FT.

SELECT-12 UPPER FLOOR 4 BEDROOMS WITH 2 ENSUITES OPTION

- Extend upper floor to front
- Additional 110 sq.ft. to upper floor (*except midtown community additional 96 sq.ft. to upper floor) with total 1400 sq.ft. to upper floor
- Add 48" x 40" HSL window to bedroom 4
- Add 3-piece bath to bedroom 2
- Delete 2nd vanity at main bath
- Reduced owner's suite bedroom 1'0"
- Reduced owner's suite W.I.C.
- Relocate laundry room
- Reduced bonus room
- Extend front porch 4'0" to support upper floor extension (*except midtown community extend 2'0" to front porch)

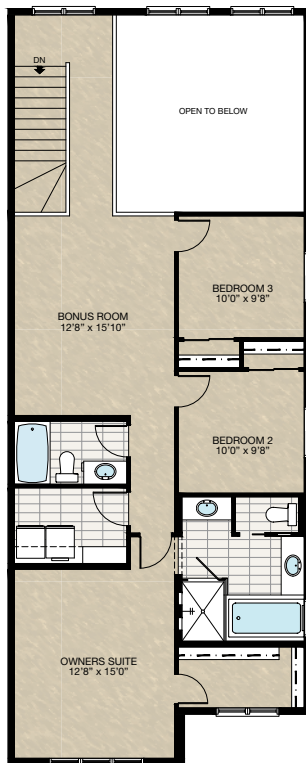
*If combined with **SELECT-9,10 & 11** main floor option, extend 3'0" to porch to all community, except midtown community, extend porch additional 1'0"



SELECT-13 OPEN TO BELOW OPTION

- Extend upper floor to front
- Total upper floor area 1166 sq.ft.
- Add 48" x 40" HSL window to bedroom 2 & 3
- Delete second vanity at main bath
- Relocate laundry room
- Relocate owner's suite to the front
- Delete 36" x 60" acrylic shower base with tiled walls & 5mm glass at ensuite
- Add 42" x 60" tiled shower with 10mm glass & tiled niches to ensuite
- Extend front porch 4'0" to support upper floor extension (*except Midtown community extend 2'0" to front porch)

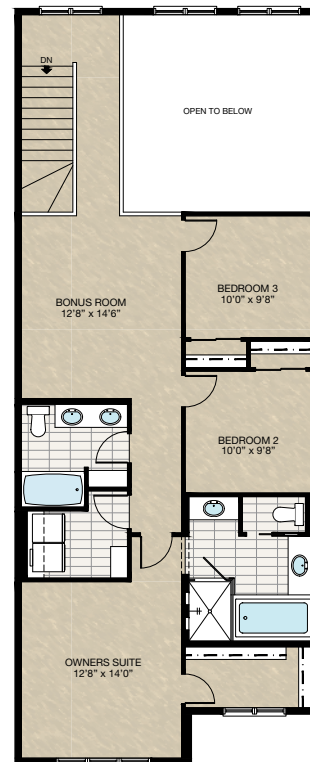
*If combined with **SELECT-9,10 & 11** main floor option, extend 3'0" to porch to all community, except Midtown community, extend porch additional 1'0"



SELECT-14 OPEN TO BELOW WITH DUAL VANITY MAIN BATH OPTION

- Extend upper floor to front
- Total upper floor area 1166 sq.ft.
- Add 48" x 40" HSL window to bedroom 2 & 3
- Additional four 16" wire shelving to main bath
- Reduced 6" to bonus room
- Relocate laundry room
- Relocate owner's suite to the front
- Delete 36" x 60" acrylic shower base with tiled walls & 5mm glass at ensuite
- Add 42" x 60" tiled shower with 10mm glass & tiled niches to ensuite
- Delete 60" x 40" frosted window at ensuite & add 36" x 40" frosted window
- Extend front porch 4'0" to support upper floor extension (*except Midtown community extend 2'0" to front porch)

* If combined with **SELECT-9,10 & 11** main floor option, extend 3'0" to porch to all community, except Midtown community, extend porch additional 1'0"



HARDWOOD

DECK

CARPET

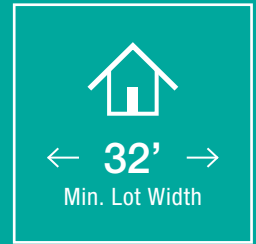
CONCRETE

TILE

LVP

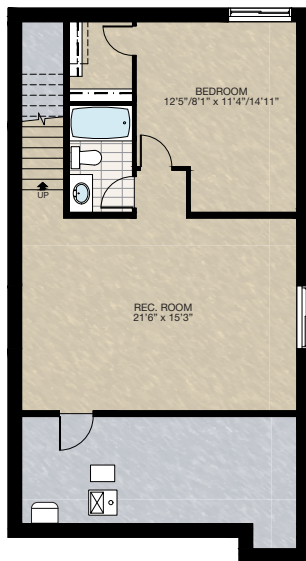
tricohomes.com

FEATURED ENCORE OPTIONS



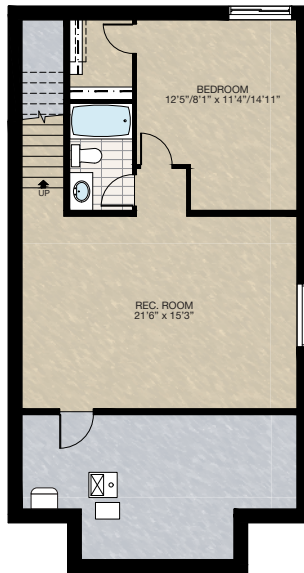
SELECT-15 BASEMENT DEVELOPMENT OPTION 1

- 666 Sq.Ft. developed area
- Add one riser to finished stairwell for 9'0" basement ceiling (8'9" headroom clearance)
- Upgrade basement window from 24" high to 36" high



SELECT-16 BASEMENT DEVELOPMENT OPTION 2 (FOR SELECT-9, 10 & 11 MAIN FLOOR OPTION)

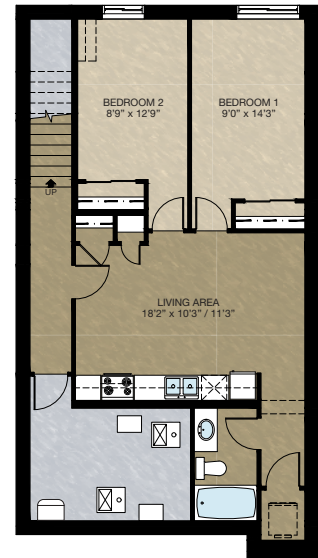
- *MUST be combined with **SELECT-9 or 10 or 11** main floor option
- 666 Sq.Ft. developed area
 - Add one riser to finished stairwell for 9'0" basement ceiling (8'9" headroom clearance)
 - Upgrade basement window from 24" high to 36" high



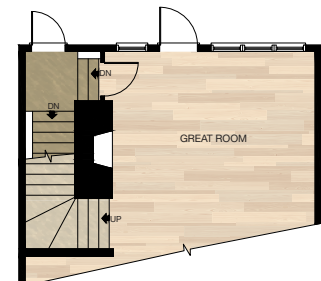
SECONDARY SUITE OPTION 1

*NOTE: This option needs to have concrete patio in lieu of wood deck

- 743 Sq.Ft. basement development (midtown community 755 sq.ft. developed area)
- Included finished basement stairwell
- Add 2'8" rear entrance door & exterior light at stairwell
- Upgraded stairwell switches to 4-way
- Add one riser to stairwell for 9'0" basement ceiling (8'9" headroom clearance)
- Delete 60" x 36" HSL window to side
- Add 40" x 40" DHS window to rear
- Includes washer & dryer rough-in only
- Relocate main floor main suite rear entrance to accommodate secondary suite window
- Delete both two 30" x 72" VSL & P/P windows at great room
- Add three 30" x 72" VSL & P/P & P/P window to great room
- Add 30" x 72" P/P to great room



MAIN FLOOR CHANGES FOR SECONDARY SUITE OPTION 1 & 2



FEATURED ENCORE OPTIONS

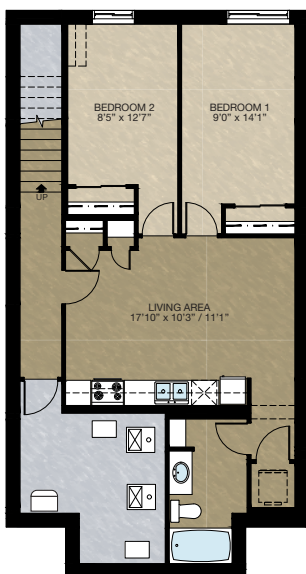
THE
ENCORE
2309 SQ.FT.

SECONDARY SUITE OPTION 2 (FOR SELECT-9, 10 & 11 MAIN FLOOR OPTION)

*NOTE: This option needs to have concrete patio in lieu of wood deck

MUST be combined with **SELECT-9 or 10 or 11 main floor option

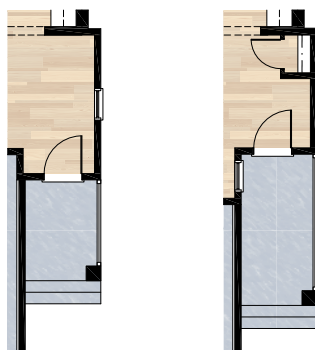
- 761 Sq.Ft. basement development
- Included finished basement stairwell
- Add 2'8" rear entrance door & exterior light at stairwell
- Upgraded stairwell switches to 4-way
- Add one riser to stairwell for 9'0" basement ceiling (8'9" headroom clearance)
- Delete 60" x 36" HSL window to side
- Add 40" x 40" DHSL window to rear
- Includes washer & dryer rough-in only
- Relocate main floor main suite rear entrance to accommodate secondary suite window
- Delete both two 30" x 72" VSL & P/P windows at great room
- Add three 30" x 72" VSL & P/P & P/P window to great room
- Add 30" x 72" P/P to great room



SELECT-17 6' WIDE FRONT ENTRY & PORCH OPTION

*NOTE: This option is designed for lot width of 31' or wider

- Additional 12 sq.ft. to main floor (extend front entry 1' x 12' and foundation below)
- Except for **SELECT 9,10, & 11** main floor option - additional 10 sq.ft. (extend front entry 1' x 10')
- Extend front porch width by 1'

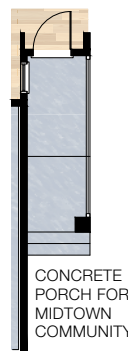
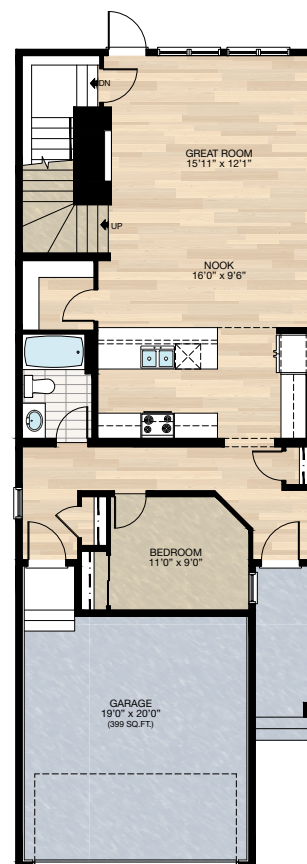


FOR SELECT 9,10, & 11
OPTIONS ONLY

SELECT-18 MAIN FLOOR BEDROOM WITH FULL BATH

*NOTE: Cannot be combined with other main floor options

- Additional 22 sq.Ft. to main floor (*except Midtown community additional 10 sq. Ft.)
- Recessed front entrance 4'0" to allow for window to main floor bedroom
- Add 30" x 72" vsl to main floor bedroom
- Recessed mudroom entrance 1'0"
- 1' Extension to garage length
- Delete 5'0" x 8'0" concrete porch & steps
- Add 5'0" x 12'0" concrete landing with bolt on risers (max. 5 risers)
- Delete 30" x 72" P window at foyer
- See foundation plan on page A-J



CONCRETE
PORCH FOR
MIDTOWN
COMMUNITY

HARDWOOD

DECK

CARPET

CONCRETE

TILE

LVP

tricohomes.com

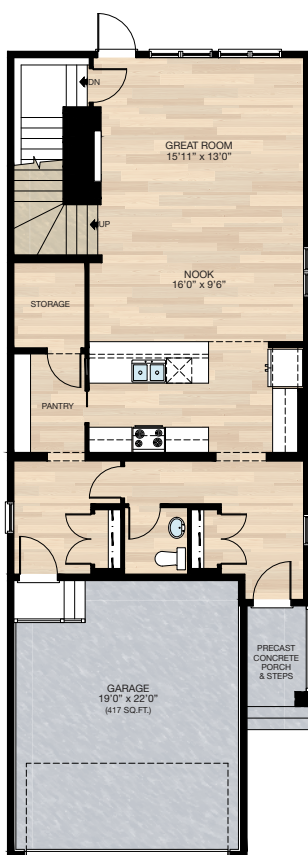
FEATURED OPTIONS

THE
ENCORE
2309 SQ.FT.

SELECT-6 STORAGE ROOM OPTION

*CANNOT be combined with other main floor options

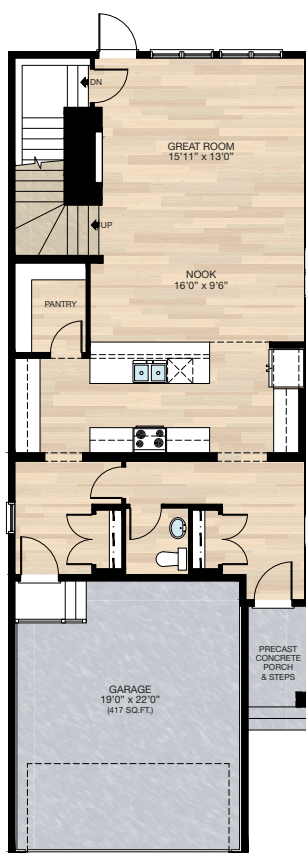
- Delete pocket office
- Reduced pantry shelving
- Add 2'8" door to storage room
- Delete 30" x 36" VSL window



SELECT-7 EXTENDED KITCHEN OPTION

*CANNOT be combined with other main floor options

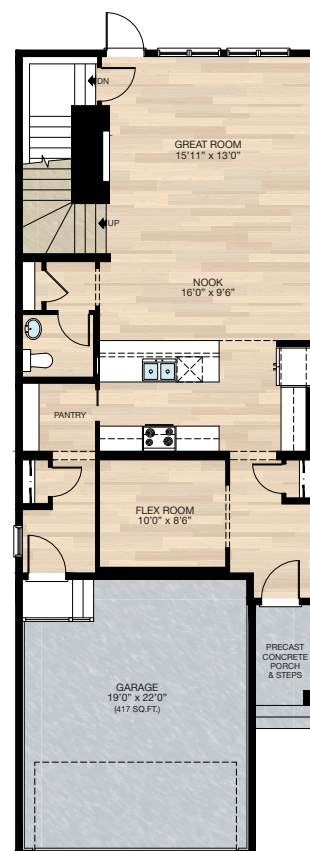
- Delete pocket office
- Reduced pantry shelving
- Changed 2'6" pocket door to swing door
- Additional 7'6" upper & lower cabinetry
- Delete 30" x 36" VSL window



SELECT-8 MAIN FLOOR FLEX ROOM OPTION

*CANNOT be combined with other main floor options

- Delete pocket office
- Reduced pantry shelving
- Relocate half bath
- Add linen closet
- Reduced mudroom & front entrance closet
- Delete 30" x 36" VSL window



Trico Homes is a local home builder, with new single and multi-family homes for sale in Calgary, Okotoks, Chestermere, Cochrane, Airdrie and DeWinton. Offering a great selection of starter, move-up, semi-estate and ultra-estate models in numerous communities, you'll find the house that's just right for you! Look for this model and many others in Ambleton, Arbour Lake, Belmont, Carrington, Chelsea, Cornerbrook, D'Arcy, Dawson's Landing, Glacier Ridge, Hamilton Heights, Homestead, Legacy, Midtown, Pine Creek, Precedence, Rivercrest, Seton, Sirocco, Verona West Townhomes, West83 Townhomes and Wolf Willow.



Renderings are artist's conceptions only and may vary by community and lot selection. Prices, floorplans, specifications and dimensions are approximate and are subject to change without notice. E.&O.E. © All rights reserved, including the right if reproduction in the whole or in part without the permission of Trico Homes.

Plan updated as of October 04, 2024.





tricohomes.com



← 28' →

Min. Lot Width

 3 Bedrooms

 2½ Bathrooms

THE McKENZIE

1640 SQ.FT.

☐ Elements Specification

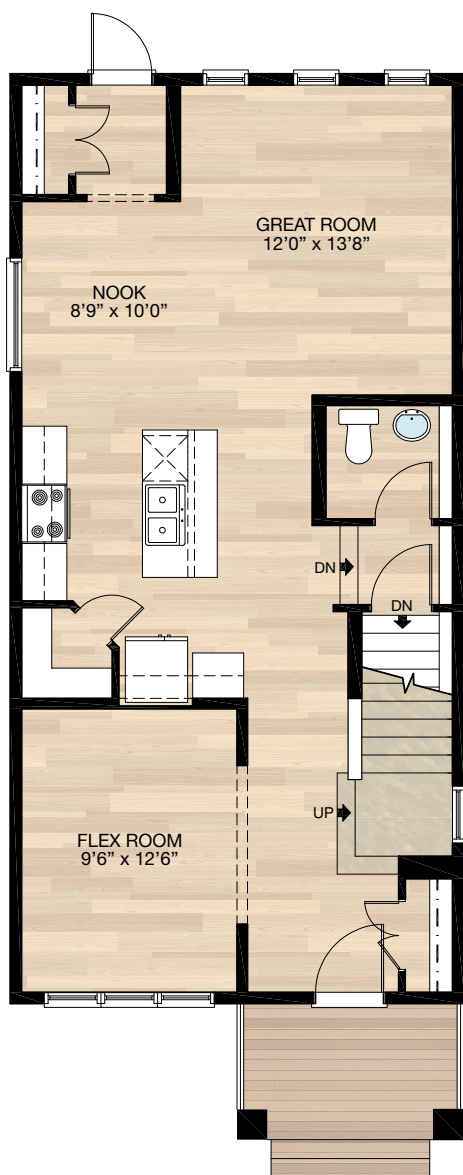
☐ Elite Specification



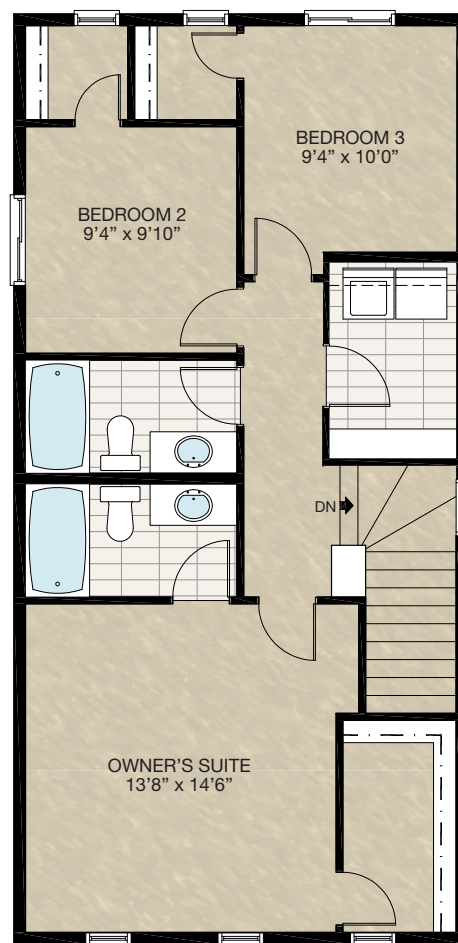
Trico Homes™
The Heart of Homebuilding®

STANDARD PLAN

THE
McKENZIE
1640 SQ.FT.



MAIN
820 SQ.FT.



UPPER
820 SQ.FT.

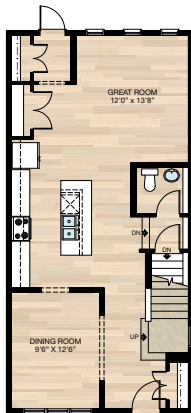


FEATURED OPTIONS



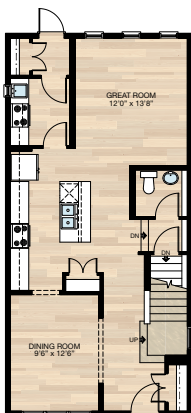
SELECT-1 KITCHEN OPTION

- Delete nook & 60" x 24" P window
- Flex room becomes dining room
- Flex room flooring from carpet to laminate
- Additional 36" of upper & lower cabinetry
- Additional 18" of kitchen island with 2-sided eating bar



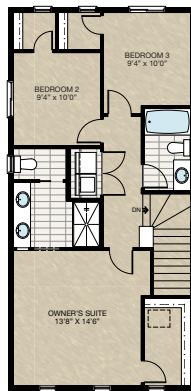
SELECT-2 SPICE KITCHEN OPTION

- Spice kitchen includes:
 - 24" Upper & lower cabinets
 - 33" Lower cabinet with sink
 - Stove & hoodfan
 - 16" x 30" VSL window
- Delete nook & 60" x 24" P window
- Flex room becomes dining room
- Flex room flooring from carpet to laminate
- Additional 24" upper & lower cabinet to main kitchen
- Rear entry closet reduced to 10" in length



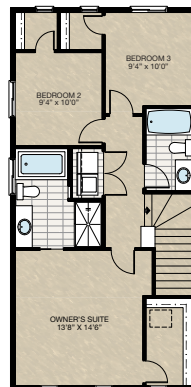
SELECT-3 ENSUITE OPTION 1

- 84" Dual vanity to ensuite
- Water closet with 2'6" pocket door
- Add 24" x 36" VSL window to water closet
- 60" x 36" Fibreglass shower
- Laundry closet in lieu of laundry room



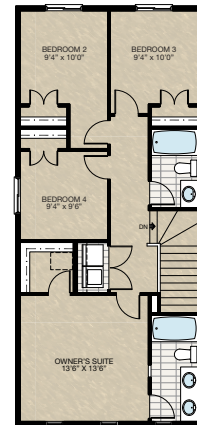
SELECT-4 ENSUITE OPTION 2

- 60" x 32" Soaker tub comes with 4" tile deck
- 60" x 36" Fibreglass shower
- Add 48" x 30" HSL window to ensuite
- 54" Vanity to ensuite
- Laundry closet in lieu of laundry room



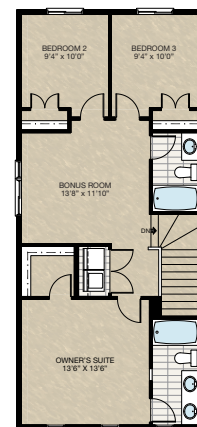
SELECT-5 4 BEDROOMS UPPER FLOOR OPTION

- Additional 80 sq.ft. to upper floor (2'0" x 20'0" Cantilever to both front & rear of upper floor)
- 70" Dual vanity to ensuite
- 5'8" x 5'4" Walk-in closet to master suite
- Laundry closet in lieu of laundry room
- Add 48" x 48" HSL window to Bedroom 2
- Delete two 24" x 48" P windows from rear



SELECT-6 BONUS ROOM OPTION

- Additional 80 sq.ft. to upper floor (2'0" x 20'0" Cantilever to both front & rear of upper floor)
- 70" Dual vanity to ensuite
- 5'8" x 5'4" Walk-in closet to master suite
- Laundry closet in lieu of laundry room
- Delete two 24" x 48" P windows from rear
- Add 48" x 24" HSL / 24" x 24" P windows to bonus room



HARDWOOD

DECK

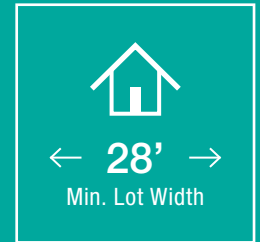
CARPET

CONCRETE

TILE

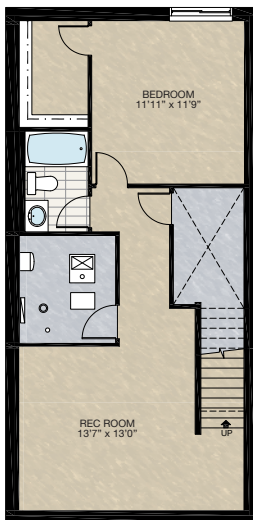
LVP

FEATURED McKENZIE OPTIONS



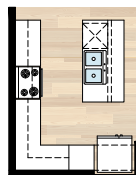
☐ SELECT-10 BASEMENT DEVELOPMENT OPTION

- 572 Sq.Ft. of developed area
- Includes finished basement stairwell
- Delete 2'8" passage door top of stairwell
- Add one riser to stairwell for 9'0" basement ceiling (8'9" headroom clearance)



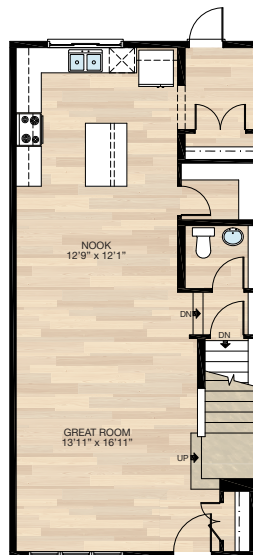
☐ SELECT-11 PANTRY OPTION

- Delete pantry & wire shelving
- Add 24" cabinet pantry
- Add 2' x 6' wall next to fridge for relocating light switch



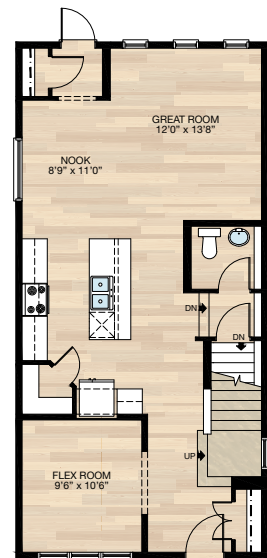
☐ SELECT-13 REAR KITCHEN OPTION

- Deleted three - 24" x 72" (CSMT/P/P) windows to rear
- Add 72" x 48" HSL (3 pane) window to rear
- Relocate rear entry to opposite side
- Window in basement will be required to relocate due to main floor rear entry new location



☐ SELECT-12 DEN WITH LARGER KITCHEN OPTION

- Reduced mudroom & closet
- Reduced den 2'0"
- Additional 18" length to kitchen island
- Additional 24" upper & lower cabinetry to kitchen



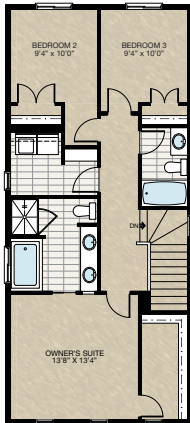
FEATURED OPTIONS

THE
McKENZIE
1640 SQ.FT.

SELECT-7

4-PIECE ENSUITE WITH LAUNDRY ROOM OPTION

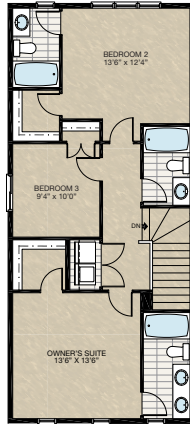
- Additional 80 sq.ft. to upper floor (2'0" x 20'0" Cantilever to both front & rear of upper floor)
- 84" Dual vanity to ensuite
- 60" x 36" Soaker tub with 4" tile deck to ensuite
- 48" x 36" Fibreglass shower to ensuite
- Add 24" x 36" VSL in laundry room
- 5'0" x 11'4" Walk-in closet to master suite
- Delete two 24" x 48" P windows at rear
- Add 48" x 40" HSL window to ensuite



SELECT-8

3 BEDROOMS WITH DUAL MASTER SUITES OPTION

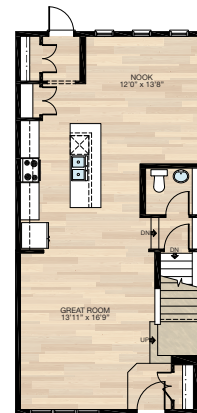
- Additional 80 sq.ft. to upper floor (2'0" x 20'0" Cantilever to both front & rear of upper floor)
- 70" Dual vanity to ensuite
- 5'8" x 5'4" Walk-in closet to master suite
- Laundry closet in lieu of laundry room
- Delete 48" x 48" HSL window from Bedroom 2
- Delete two 24" x 48" P windows at rear
- Add 24" x 48" VSL window to bedroom 2 bathroom
- Add three 30" x 60" VSL/P/P window to bedroom 2



SELECT-9

FRONT GREAT ROOM OPTION

- Delete 60" x 24" P window from original nook location
- Additional 36" upper & lower cabinet to kitchen
- Additional 30" of kitchen island with 2-sided eating bar



Trico Homes is a local home builder, with new single and multi-family homes for sale in Calgary, Okotoks, Chestermere, Cochrane, Airdrie and DeWinton. Offering a great selection of starter, move-up, semi-estate and ultra-estate models in numerous communities, you'll find the house that's just right for you! Look for this model and many others in Ambleton, Belmont, Brawn Landing, Carrington, Chelsea, Chelsea Court Townhomes, Colours of Seton Townhomes, Cornerbrook, D'Arcy, Creek View, Dawson's Landing, Glacier Ridge, Hamilton Heights, Harmony, Homestead, Huxley, Legacy, Midtown, Pine Creek, Precedence, Rivercrest, Seton, Sirocco, Southbow Landing, Verona West Townhomes, West Springs, West83 Townhomes and Wolf Willow.



Renderings are artist's conceptions only and may vary by community and lot selection. Prices, floorplans, specifications and dimensions are approximate and are subject to change without notice. E.&O.E. © All rights reserved, including the right if reproduction in the whole or in part without the permission of Trico Homes.

Plan updated as of March 20, 2024.



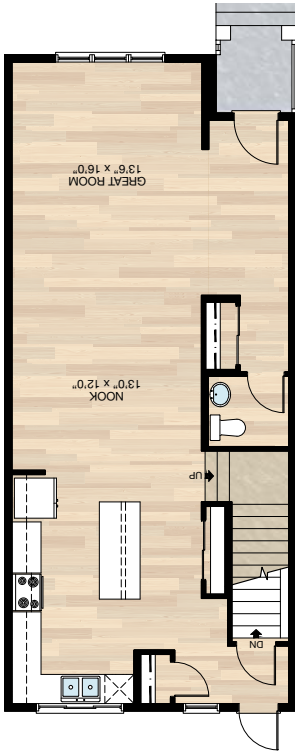
tricohomes.com

FEATURED OPTIONS

THE
RAEYA ZLL
1802 SQ.FT.

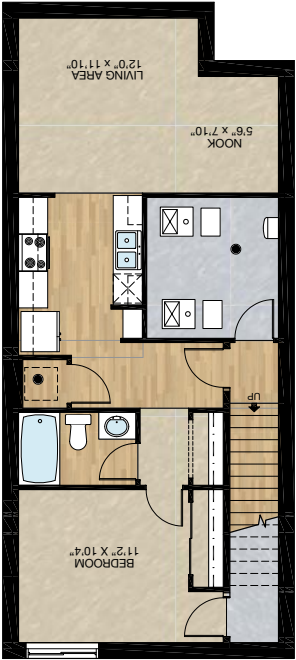
SELECT-1 DELETE FLEX ROOM OPTION

- Delete front flex room
- Additional 3 9/16" of upper and lower cabinets
- Extend island 20"
- Adjust nook and great room sizes, flooring & lighting locations



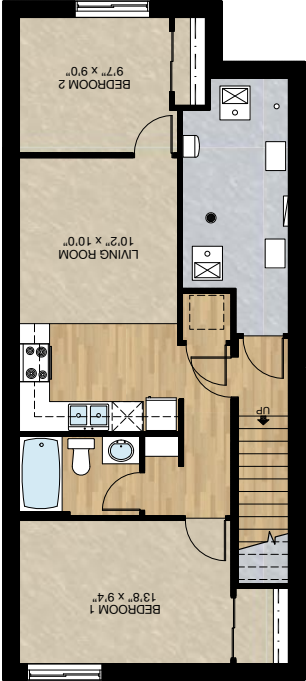
SECONDARY SUITE OPTION 1

- 636 Sq.Ft. of basement development
- Included finished basement stairwell
- Add 2 risers to stairwell for 9'0" basement ceiling (8'9" headroom clearance)



SECONDARY SUITE OPTION 2 (MUST COMBINE WITH SELECT 2 OPTION)

- 637 Sq.Ft. basement development
- Included finished basement stairwell
- Add 2 risers to stairwell for 9'0" basement ceiling (8'9" headroom clearance)



Trico Homes is a local home builder, with new single and multi-family homes for sale in Calgary, Okotoks, Chestermere, Cochrane, Airdrie and DelVinton. Offering a great selection of starter, move-up, semi-estate and ultra-estate models in numerous communities, you'll find the house that's just right for you! Look for this model and many others in Ambleton, Belmont, Brown Landing, Carrington, Chelsea, Chelsea Court Townhomes, Colours of Seton Townhomes, Cornerbrook, D'Arcy, Creek View, Dawson's Landing, Glacier Ridge, Hamilton Heights, Harmony, Homestead, Huxley, Legacy, Midtown, Pine Creek, Precedence, Rivercrest, Seton, Sirocco, Southbow Landing, Verona West Townhomes, West Springs, West83 Townhomes and Wolf Willow.

Renderings are artist's conceptions only and may vary by community and lot selection. Prices, floorplans, specifications and dimensions are approximate and are subject to change without notice. E.&O.E. © All rights reserved, including the right of reproduction in the whole or in part without the permission of Trico Homes.

Plan updated as of March 20, 2024.





☐ Elements Specification ☐ Elite Specification

THE RAEYA ZLL 1802 SQ.FT.



3 Bedrooms
2 1/2 Bathrooms

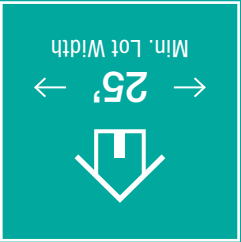
Min. Lot Width
25' → ←

STANDARD PLAN

THE
RAEYA ZLL
1802 SQ.FT.

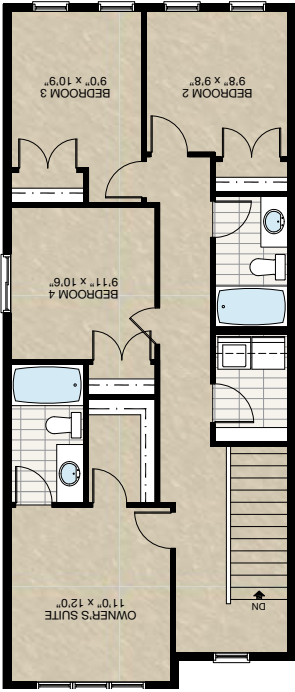


FEATURED OPTIONS



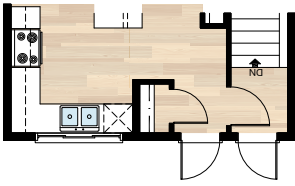
- Delete bonus room & add fourth bedroom
- Delete 72" x 20" window, add 48" x 48" window
- This reduces the depth of the master walk-in closet
- Add one light to the hallway on existing switch

SELECT-1 4 BEDROOM UPPER FLOOR OPTION



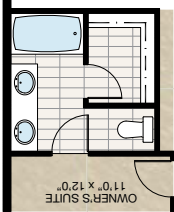
SELECT-2 REAR BASEMENT ENTRANCE OPTION

- Delete 30" x 72" window
- Add standard 2'8" exterior door
- Move basement door
- Add light to rear landing (using existing switch)
- Add exterior light & switch



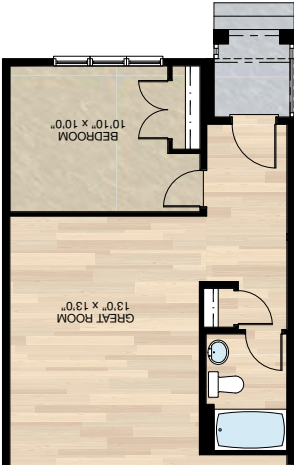
SELECT-3 ALTERNATE ENSUITE OPTION

- Add 24" of vanity & second sink
- Add 2 lights to existing switch



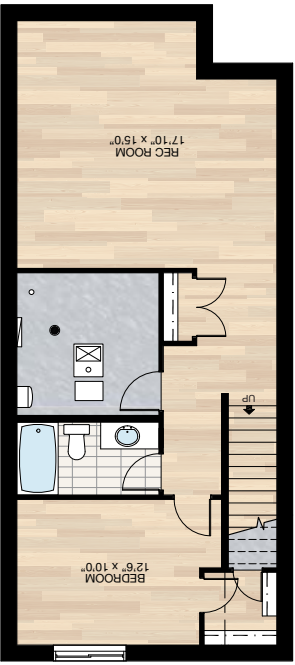
SELECT-4 MAIN FLOOR FULL BATH OPTION

- Add standard tub/shower unit to half bath
- Delete 4'0" bypass door & replace with 2'4" swing door
- Flex room becomes bedroom with two 2'0" swing doors & closet
- Delete three 24" x 24" interior windows



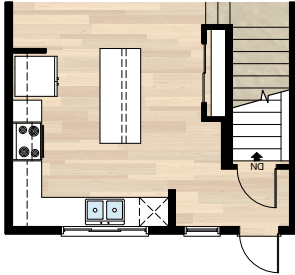
SELECT-5 BASEMENT DEVELOPMENT OPTION

- 648 Sq.ft. basement development
- Included finished basement stairwell
- Delete 2'8" passage door top of stairwell
- Add one riser to stairwell for 9'0" basement ceiling (8'9" headroom clearance)
- Reduce length of bearing wall & strip footing & add dropped beam
- 60" x 24" Window changed to 60" x 36"



SELECT-6 ALTERNATE KITCHEN OPTION

- Delete rear closet
- Add 2' x 6" mech wall by stairs
- Extend lower cabinets 2'4"
- Extend island 18"
- Re-center window, sink, dishwasher & lights



LVP

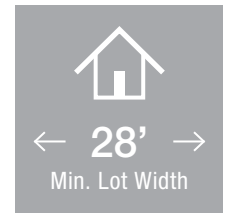
TILE

CONCRETE

CARPET


DECK


HARDWOOD



← 28' →

Min. Lot Width

 3 Bedrooms

 2½ Bathrooms

THE ROWAN II

1730 SQ.FT.



Elements Specification



Elite Specification

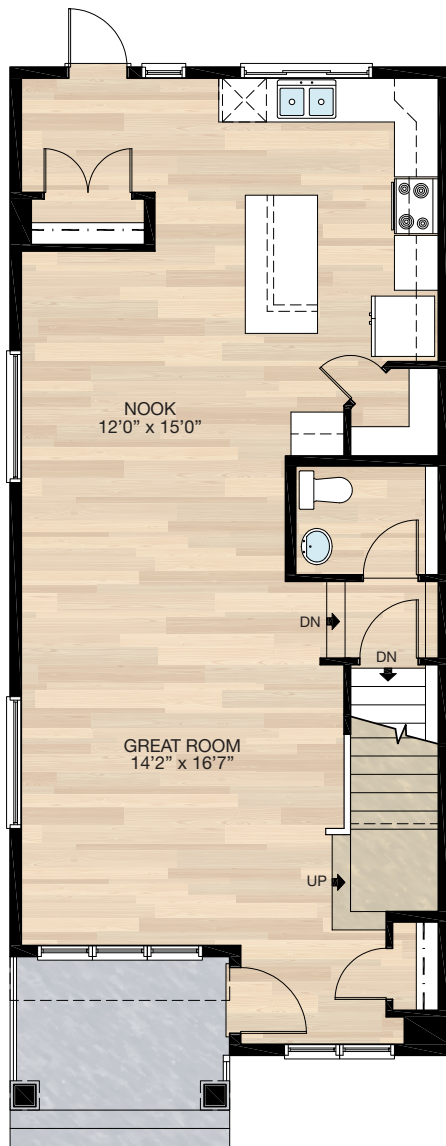


Trico Homes™

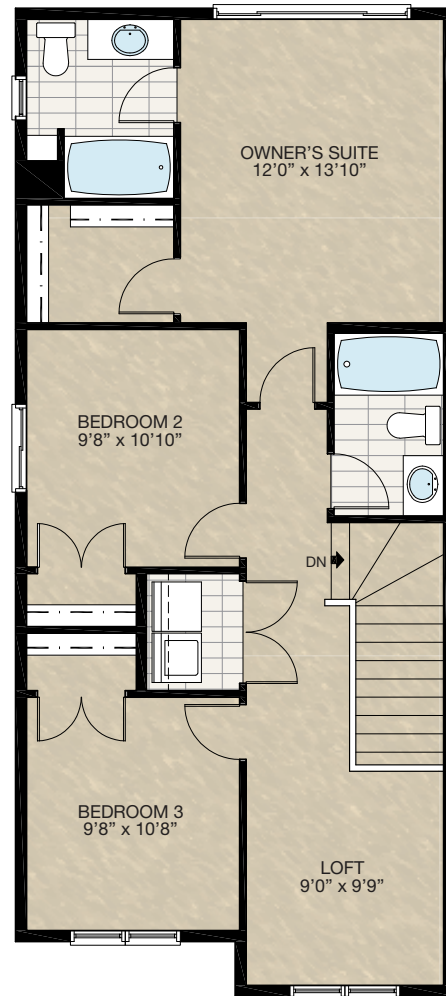
The Heart of Homebuilding®

STANDARD PLAN

THE
ROWAN II
1730 SQ.FT.



MAIN
855 SQ.FT.



UPPER
875 SQ.FT.

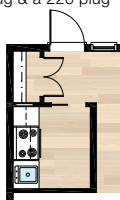


FEATURED OPTIONS



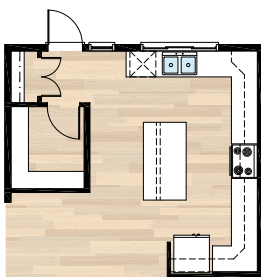
SELECT-1 SPICE KITCHEN OPTION

- Door & window need to shift over to allow for new closet location
- Add range, hood fan & sink
- Add 3'8" of lower cabinets & 1'6" of upper cabinets plus cabinet over hood fan
- Relocate plug from back entrance & add a 110 plug & a 220 plug



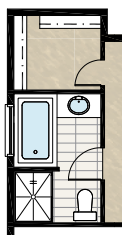
SELECT-2 KITCHEN OPTION

- Door & window need to shift over to allow for new closet location
- Delete corner pantry & add larger pantry
- Increase cabinetry



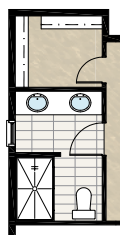
SELECT-3 FOUR PIECE ENSUITE OPTION

- Add 2' cantilever
- Flip ensuite & closet location
- Delete standard tub/shower unit
- Add 48" x 36" shower with sliding door
- Add 60" x 32" soaker tub
- Change window from 24" x 48" VSL to 48" x 40" P
- Change standard door to pocket door



SELECT-4 FOUR PIECE ENSUITE OPTION 1

- Add 2' cantilever
- Flip ensuite & closet location
- Delete standard tub/shower unit
- Add 60" x 36" FG base shower with tiled walls and 5 mm sliding door
- Add second vanity light and GFI plug
- Add pot light to shower
- Window 24" x 48" VSL changed to 24" x 40" VSL



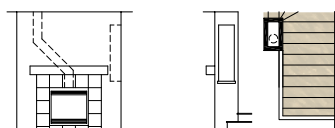
SELECT-5 SUPER SHOWER OPTION

- Add 2' cantilever
- Flip ensuite & closet location
- Delete standard tub/shower unit
- Add 80" x 36" tile & glass shower with bench
- Delete window
- Add second light & fan to water closet



SELECT-6 GREAT ROOM FIREPLACE OPTION

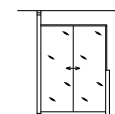
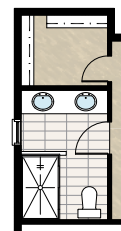
- Full height wall to inside of stairwell on main floor
- Add fireplace with 12" tile facing & MDF paint grade mantle (fireplace facing & mantle materials to be selected at design centre)
- Add void for fireplace vent to inside corner at top of stairs



Front Elevation Upper Floor Revision

SELECT-4A FOUR PIECE ENSUITE OPTION 2

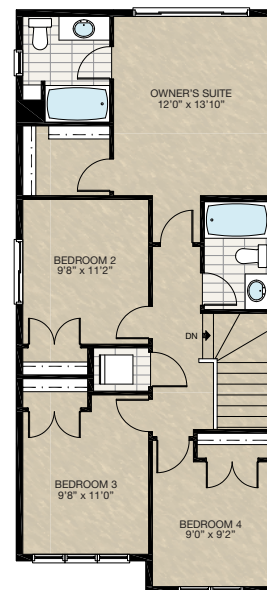
- Add 2' cantilever
- Flip ensuite & closet location
- Delete standard tub/shower unit
- Add 36" x 60" FG base shower with tiled walls and 5 mm sliding door
- Half wall & half 5mm glass between shower & vanity
- Extend vanity light and second sink
- Add second vanity light and GFI plug
- Add pot light to shower
- Window 24" x 48" VSL changed to 24" x 40" VSL



Tile Walls & Glass with Fiberglass Base Ensuite Shower Detail

SELECT-8 FOUR BEDROOM UPPER FLOOR OPTION

- Remove loft area & replace with Bedroom 4

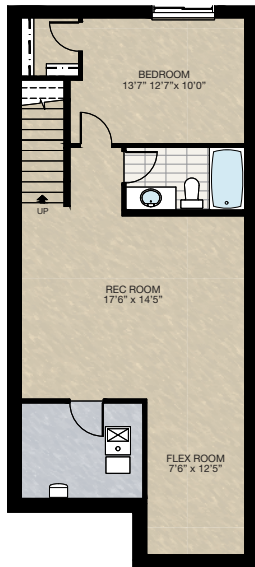


FEATURED ROWAN II OPTIONS



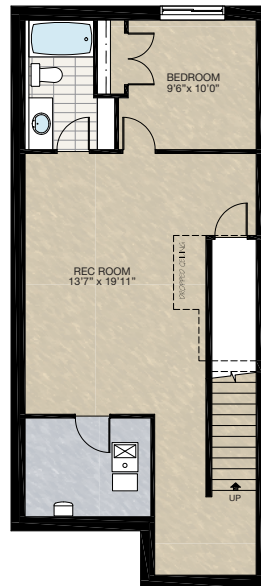
SELECT-14 BASEMENT DEVELOPMENT OPTION (CAN ONLY BE COMBINED WITH SELECT-13)

- 648 Sq.Ft. of developed area
- Includes finished basement stairwell
- Delete 2'8" door at top of stairwell
- Add extra riser to stairwell for 9' basement ceiling with 8'9" headroom
- Window changes from 60" x 24" to 60" x 36"



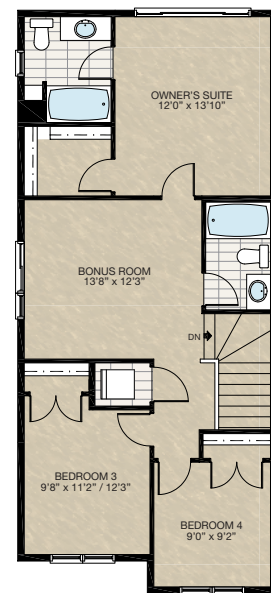
SELECT-15 BASEMENT DEVELOPMENT OPTION

- 614 Sq.Ft. of developed area
- Includes finished basement stairwell
- Delete 2'8" door at top of stairwell
- Add extra riser to stairwell for 9' basement ceiling with 8'9" headroom
- Window changes from 60" x 24" to 60" x 36"



SELECT-16 BONUS ROOM OPTION

- Remove loft area & replace with Bedroom 2
- Delete 60" x 48" HSL window
- Add 24"/48" x 24" (P/HSL) window to bonus room

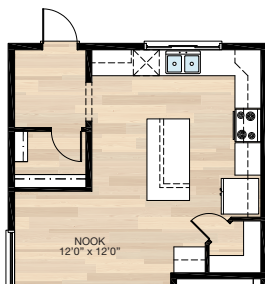


FEATURED OPTIONS

THE
ROWAN II
1730 SQ.FT.

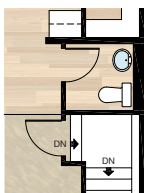
☐ **SELECT-9 MUDROOM OPTION**

- Increase rear closet size
- Delete rear window
- Extend kitchen cabinets



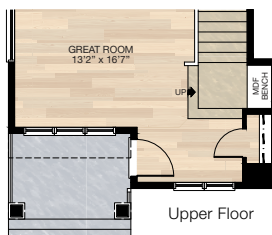
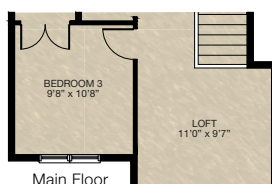
☐ **SELECT-10 HALF BATH OPTION**

- Adjust half bath & basement door location so half bath is no longer dropped



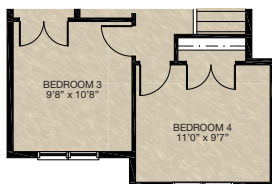
☐ **SELECT-11 WIDER ENTRY OPTION**

- Widen entry & upper floor 2'
- Additional 21 sq.ft. to main floor
- Additional 21 sq.ft. to upper floor
- Add MDF bench seat to stair landing
- Add 30" x 36" window to stair landing



☐ **SELECT-12 FOUR BEDROOM OPTION (CAN ONLY BE COMBINED WITH SELECT-11)**

- Turn loft into fourth bedroom complete with closet
- Additional 10 sq.ft.



☐ **SELECT-13 SEPERATE STAIR OPTION**

- Add separate stair to basement & delete current basement stairwell
- Half bath entrance moves & dropped floor is deleted



Trico Homes is a local home builder, with new single and multi-family homes for sale in Calgary, Okotoks, Chestermere, Cochrane, Airdrie and DeWinton. Offering a great selection of starter, move-up, semi-estate and ultra-estate models in numerous communities, you'll find the house that's just right for you! Look for this model and many others in Ambleton, Belmont, Brawn Landing, Carrington, Chelsea, Chelsea Court Townhomes, Colours of Seton Townhomes, Cornerbrook, D'Arcy, Creek View, Dawson's Landing, Glacier Ridge, Hamilton Heights, Harmony, Homestead, Huxley, Legacy, Midtown, Pine Creek, Precedence, Rivercrest, Seton, Sirocco, Southbow Landing, Verona West Townhomes, West Springs, West83 Townhomes and Wolf Willow.

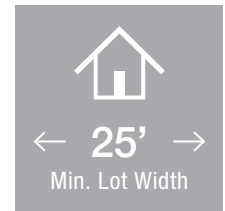


Renderings are artist's conceptions only and may vary by community and lot selection. Prices, floorplans, specifications and dimensions are approximate and are subject to change without notice. E.&O.E. © All rights reserved, including the right if reproduction in the whole or in part without the permission of Trico Homes.


Plan updated as of March 20, 2024.




tricohomes.com



← 25' →
Min. Lot Width

 3 Bedrooms

 2½ Bathrooms

THE SANDALWOOD ZLL

1664 SQ.FT.

☐ Elements Specification

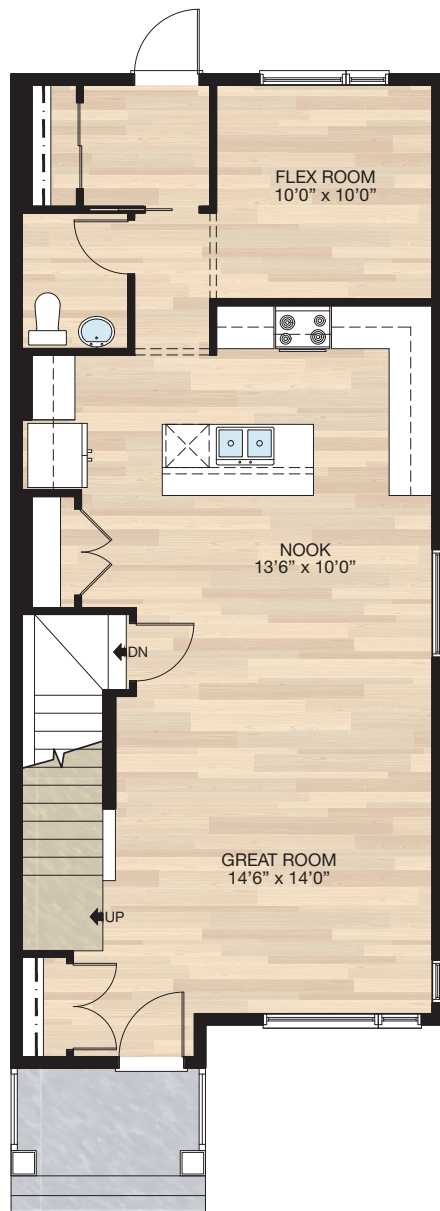
☐ Elite Specification



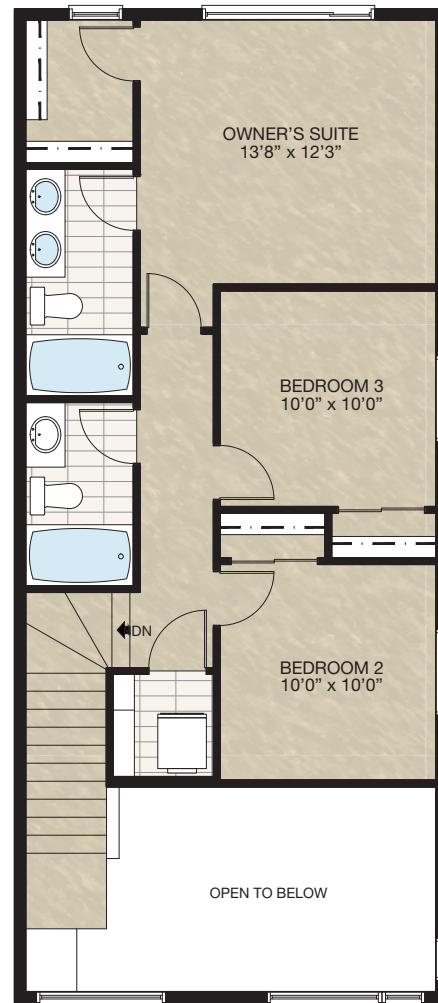
Trico Homes™
The Heart of Homebuilding®

STANDARD PLAN

THE
SANDALWOOD
ZLL
1664 SQ.FT.



MAIN
898 SQ.FT.



UPPER
766 SQ.FT.

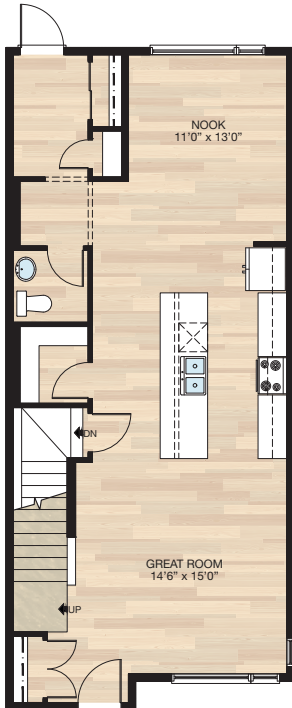


FEATURED OPTIONS



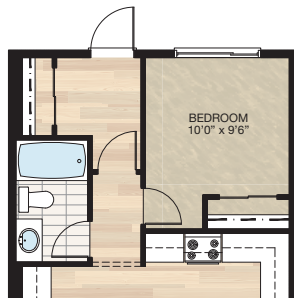
SELECT-1 ALTERNATE MAIN FLOOR OPTION

- Remove 48/24" x 72" window & add 72/24" x 72" window in flex room
- Remove 60" x 18" window in nook
- *CANNOT be combined with **SELECT-2 & 3**



SELECT-2 MAIN FLOOR BEDROOM OPTION

- Extend main floor & foundation 2'0" adding 40 sq.ft.
- Close in flex room & add closet for bedroom
- Delete half bath & add full bath
- Remove pocket door & add 2'8" swing door
- Remove 48/24" x 72" window & add 72" x 60" window
- * CANNOT be combined with **SELECT-1, 3, 4 & 5**



SELECT-3 OPEN MUDROOM OPTION

- Delete pocket door to mudroom
- Half bath is reduced
- Rear closet becomes larger & 4'0" door is increased to 5'0" door
- Two 3-way switches are removed
- * CANNOT be combined with **SELECT-1 & 2**



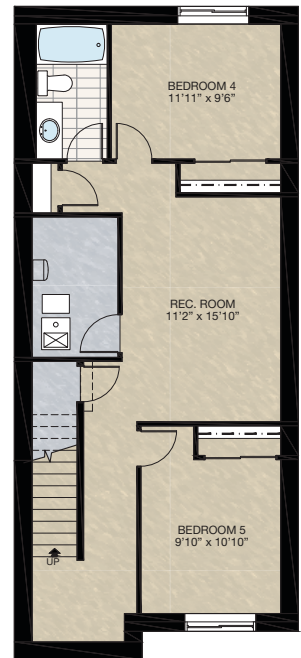
SELECT-4 BASEMENT DEVELOPMENT OPTION

- 694 Sq.Ft. basement development
- Included finished basement stairwell
- Delete 2'8" passage door top of stairwell
- Add 2 risers to stairwell for 9'0" basement ceiling (8'9" headroom clearance)
- 60" x 24" Window changed to 60" x 36"



SELECT-5 BASEMENT DEVELOPMENT (2 BEDROOM) OPTION

- 694 Sq.Ft. basement development
- Included finished basement stairwell
- Delete 2'8" passage door top of stairwell
- Add 2 risers to stairwell for 9'0" basement ceiling (8'9" headroom clearance)
- 60" x 24" Window changed to 60" x 36"
- Add 60" x 30" window



HARDWOOD

DECK

CARPET

CONCRETE

TILE

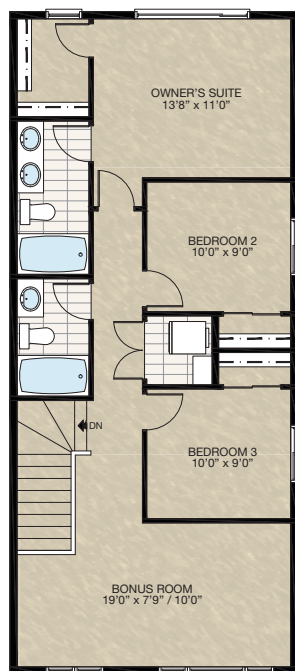
LVP

FEATURED SANDALWOOD ZLL OPTIONS



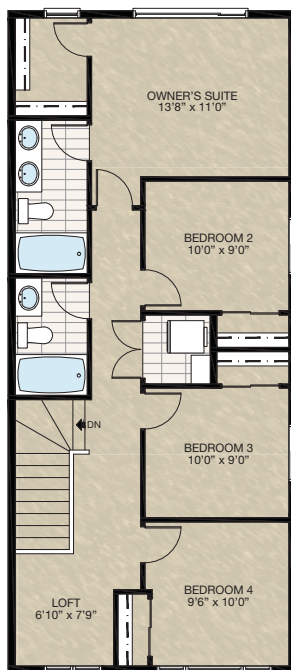
SELECT-9 ALTERNATE UPPER FLOOR: BONUS ROOM OPTION

- Add 154 Sq.Ft. (use open-to-below area)
- For A1 modern elevation - change front upper floor windows to 60" ht. max and frame top of windows at 6'8" from upper floor level
- Change picture window to opening window in bonus room
- Delete picture window from right elevation front



SELECT-10 ALTERNATE UPPER FLOOR: EXTRA BEDROOM + LOFT OPTION

- Add 154 Sq.Ft. (use open-to-below area)
- For A1 modern elevation - change front upper floor windows to 60" ht. max and frame top of windows at 6'8" from upper floor level
- Change picture window to egress window in bedroom 4
- Change picture window to opening window in loft
- Delete picture window from right elevation front



TWO BEDROOM SECONDARY SUITE OPTION

- 697 Sq.Ft. basement development
- Delete 60" x 18" P window @ nook due to zero lot line side
- Delete side window @ great room due to zero lot line side (window size is elevation dependent)
- Included finished basement stairwell
- Add 2 risers to stairwell for 9'0" basement ceiling (8'9" headroom clearance)
- Add 2'8" side entrance exterior door & exterior light w/switch @ stairwell
- Upgrade basement window from 60" x 24" DHS to 60" x 36" DHS
- Add 48" x 36" DHS window
- * MUST combine with **SELECT-8** alt. upper floor option due to zero lot side ensuite & loft windows to be removed from **SELECT-8**



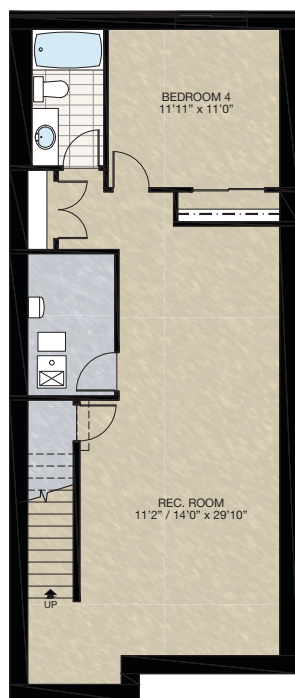
FEATURED OPTIONS

THE
SANDALWOOD
ZLL
1664 SQ.FT.

SELECT-6 BASEMENT DEVELOPMENT OPTION

- 731 Sq.Ft. basement development
- Included finished basement stairwell
- Delete 2'8" passage door top of stairwell
- Add 2 risers to stairwell for 9'0" basement ceiling (8'9" headroom clearance)
- 60" x 24" Window changed to 60" x 36"

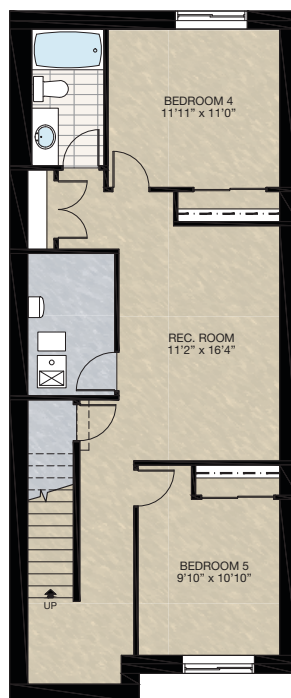
*Can ONLY be combined with **SELECT-2**



SELECT-7 BASEMENT DEVELOPMENT (2 BEDROOM) OPTION

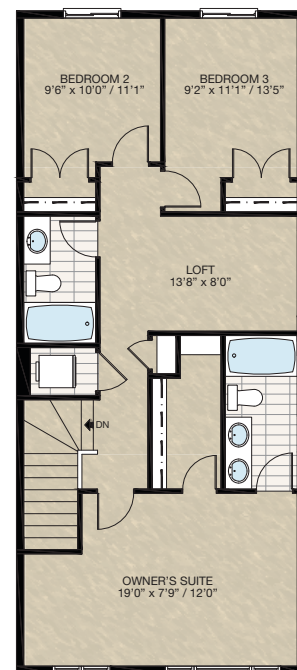
- 731 Sq.Ft. basement development
- Included finished basement stairwell
- Delete 2'8" passage door top of stairwell
- Add 2 risers to stairwell for 9'0" basement ceiling (8'9" headroom clearance)
- 60" x 24" Window changed to 60" x 36"
- Add 60" x 30" window

*Can ONLY be combined with **SELECT-2**



SELECT-8 ALTERNATE UPPER FLOOR: LOFT + FRONT OWNER'S SUITE OPTION

- Add 154 sq.ft. (use open-to-below area)
- For A1 modern elevation - change front upper floor windows to 60" ht. max and frame top of windows at 6'8" from upper floor level
- Change picture window to egress window in owner's suite
- Delete picture window from right elevation front
- Delete 96" x 60" HSL window from rear elevation
- Delete 30" x 30" P window from rear elevation
- Relocate (2) 48" x 48" HSL from right elevation to rear
- Add 30" x 48" VSL window to ensuite
- Add 72" x 24" HSL one-side window to loft



Trico Homes is a local home builder, with new single and multi-family homes for sale in Calgary, Okotoks, Chestermere, Cochrane, Airdrie and DeWinton. Offering a great selection of starter, move-up, semi-estate and ultra-estate models in numerous communities, you'll find the house that's just right for you! Look for this model and many others in Ambleton, Belmont, Brawn Landing, Carrington, Chelsea, Chelsea Court Townhomes, Colours of Seton Townhomes, Cornerbrook, D'Arcy, Creek View, Dawson's Landing, Glacier Ridge, Hamilton Heights, Harmony, Homestead, Huxley, Legacy, Midtown, Pine Creek, Precedence, Rivercrest, Seton, Sirocco, Southbow Landing, Verona West Townhomes, West Springs, West83 Townhomes and Wolf Willow.

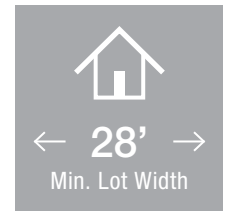



Renderings are artist's conceptions only and may vary by community and lot selection. Prices, floorplans, specifications and dimensions are approximate and are subject to change without notice. E.&O.E. © All rights reserved, including the right if reproduction in the whole or in part without the permission of Trico Homes.


Plan updated as of March 20, 2024.



tricohomes.com



 3 Bedrooms

 2½ Bathrooms

THE SIENNA

1460 SQ.FT.

☐ Elements Specification

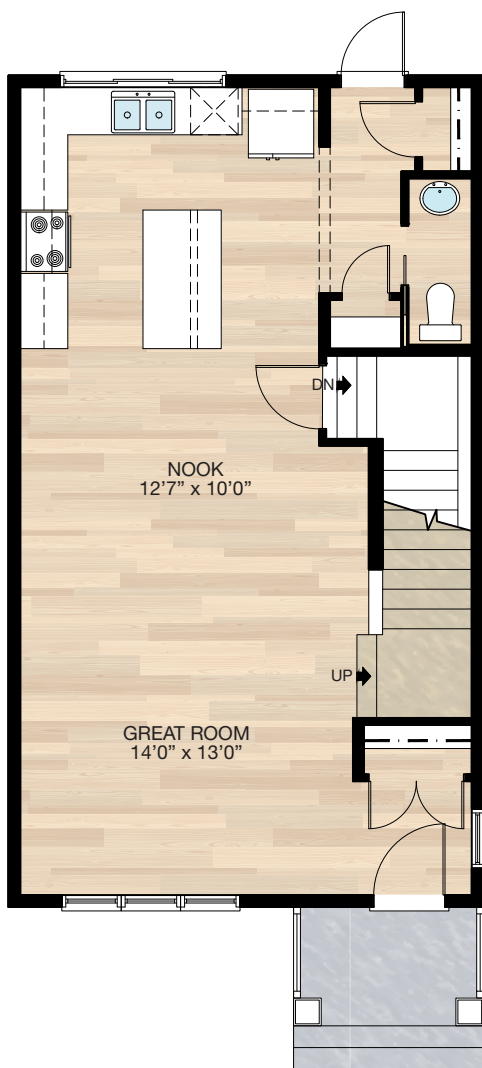
☐ Elite Specification



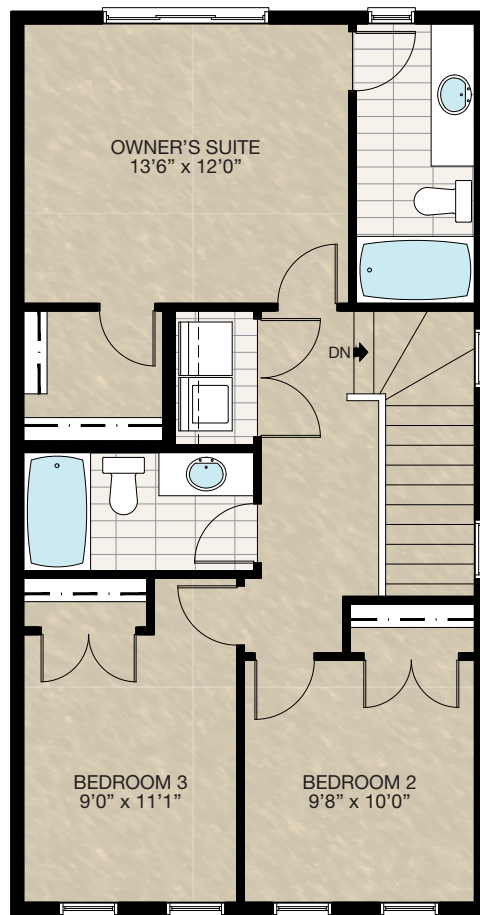
Trico Homes™
The Heart of Homebuilding®

STANDARD PLAN

THE
SIENNA
1460 SQ.FT.



MAIN
700 SQ.FT.



UPPER
760 SQ.FT.

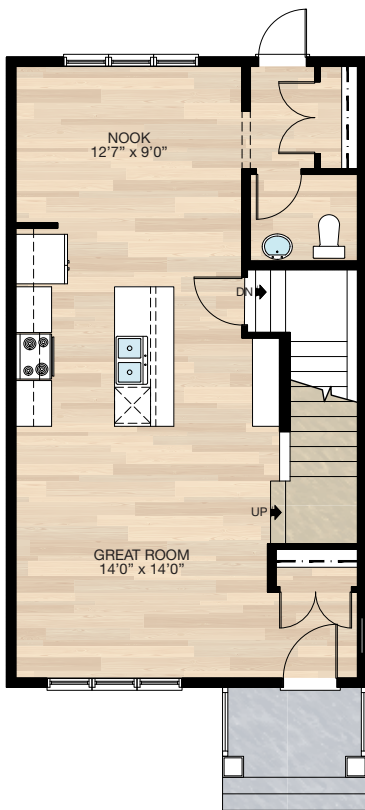


FEATURED OPTIONS



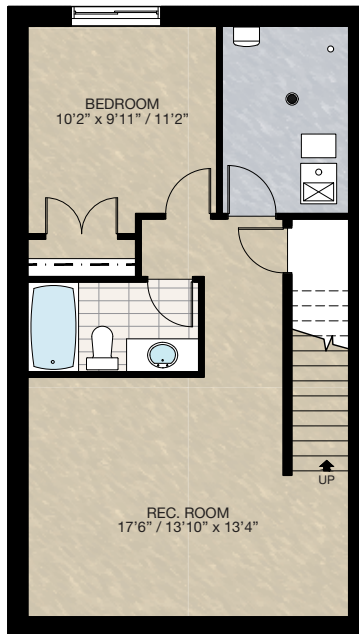
☐ SELECT-1 ALTERNATE KITCHEN OPTION

- Delete closet pantry & add 60" cabinet pantry (18" deep)
- Adjust ½ bath & increase rear closet
- Move kitchen to center of house
- Delete 84" x 40" window & add three 30" x 72" windows



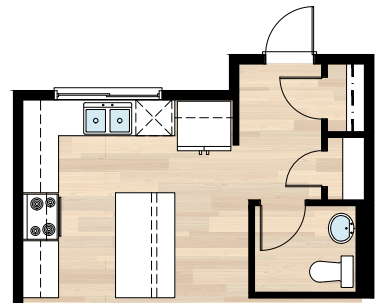
☐ SELECT-3 BASEMENT DEVELOPMENT OPTION

- 494 Sq.Ft. basement development
- Included finished basement stairwell
- Delete 2'8" passage door top of stairwell
- Add two risers to stairwell for 9'0" basement ceiling (8'9" headroom clearance)
- 60" x 24" window changed to 60" x 36"



☐ SELECT-4 MUDROOM OPTION

- Adds 16 sq.ft. including foundation
- Delete 10½" of lower cabinets
- Delete 84" x 48" window and add 72" x 48" window



HARDWOOD

DECK

CARPET

CONCRETE

TILE

LVP

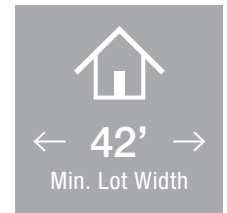
THE
SIENNA
1460 SQ.FT.


[illegible]


 **BEST
MANAGED
COMPANIES**

Platinum member
2004 - 2024

Plan updated as of **October 04, 2024.**



 5 Bedrooms

 4½ Bathrooms

 Triple Garage

THE SPRINGFIELD

3249 SQ.FT.

☐ Elements Specification

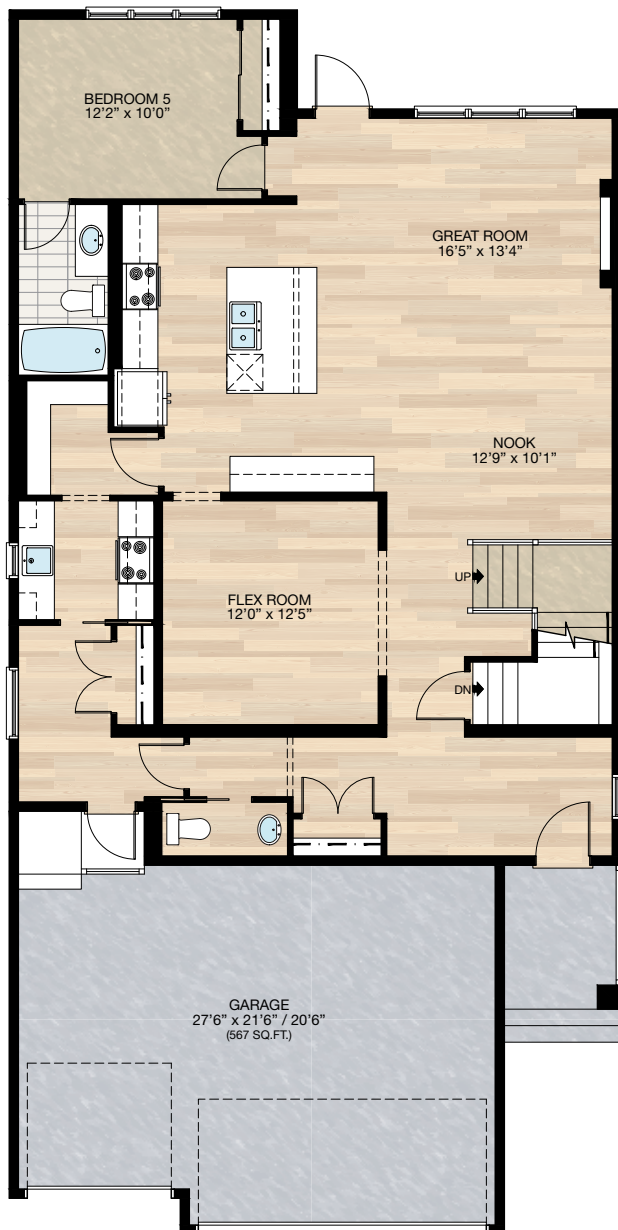
☐ Elite Specification



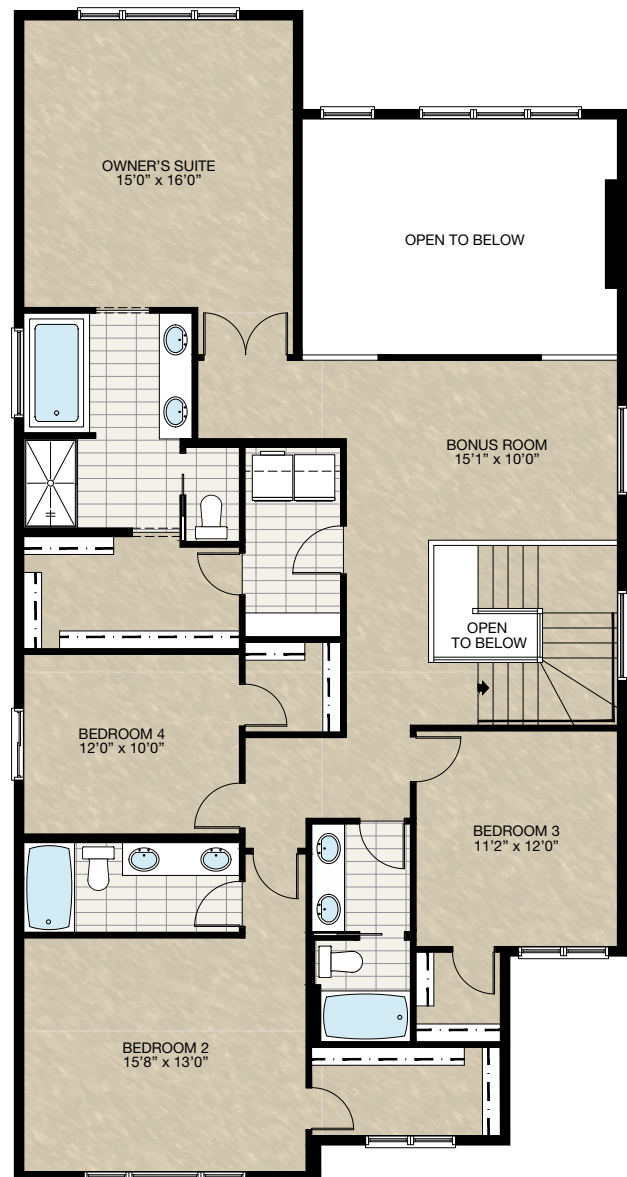
Trico Homes™
The Heart of Homebuilding®

STANDARD PLAN

THE
SPRINGFIELD
3249 SQ.FT.



MAIN
1494 SQ.FT.



UPPER
1755 SQ.FT.

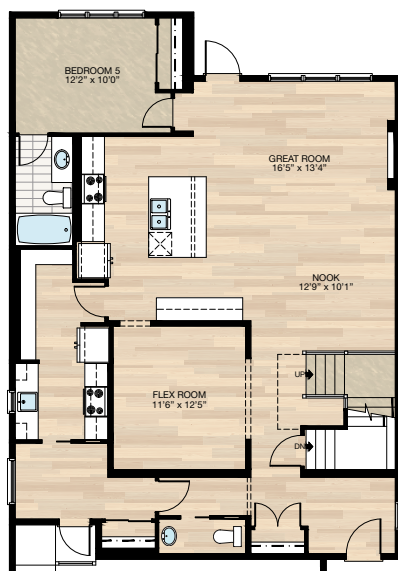


FEATURED OPTIONS



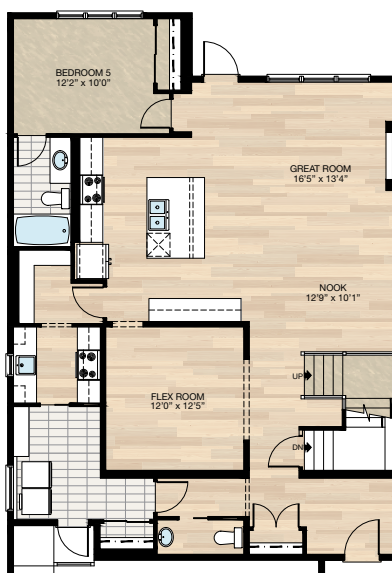
SELECT-1 ALTERNATE SPICE KITCHEN OPTION

- Relocate mudroom closet
- Reduced mudroom space
- Add fridge to spice kitchen
- Additional wire shelving to pantry
- Reduced flex room by 6"
- Reduced kitchen cabinets by 6" (next to flex room)



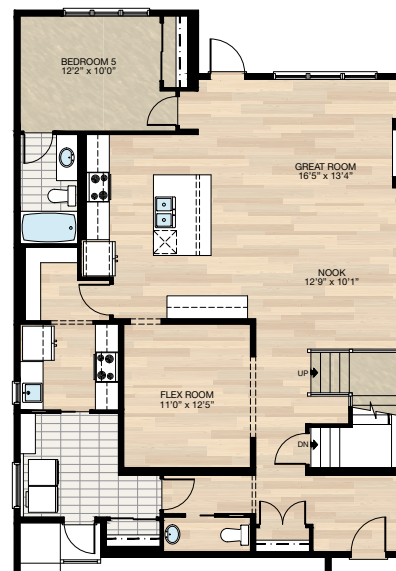
SELECT-2 MAIN FLOOR LAUNDRY OPTION

- Relocate mudroom closet
- Add wire shelving to laundry/mudroom
- Mudroom flooring changed from hardwood to tile



SELECT-3 MAIN FLOOR LAUNDRY WITH ALTERNATE SPICE KITCHEN

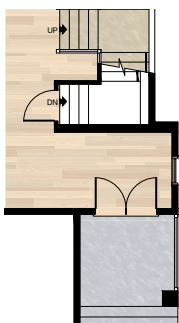
- Relocate mudroom closet
- Add wire shelving to laundry/mudroom
- Add fridge to spice kitchen
- Reduced flex room by 1'0"
- Mudroom flooring changed from hardwood to tile



SELECT-4 WIDER ENTRY & PORCH OPTION

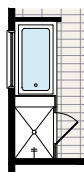
*Requires minimum lot width of 44' in Calgary & 46' minimum lot width in Chestermere

- Additional 16 Sq.Ft. to main floor
- Extend front entry & foundation below 2'0" x 8'0"
- Extend front precast concrete porch 2'0" in width
- Delete 3'0" front entry door & transom above
- Add 5'4" double front doors & transom above

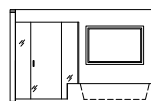


SELECT-5 ENSUITE SHOWER OPTION

- Delete standard 36" x 60" acrylic base shower
- Add 44" x 66" tiled shower w/10mm glass
- Extend tub tile ledge by 9.5" for shower bench



Shower & Tub
Plan View



Shower & Tub
Elevation View

HARDWOOD

DECK

CARPET

CONCRETE

TILE

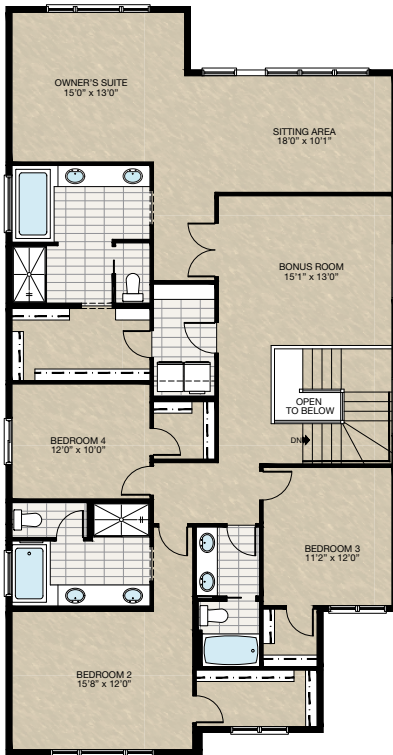
LVP

FEATURED SPRINGFIELD OPTIONS



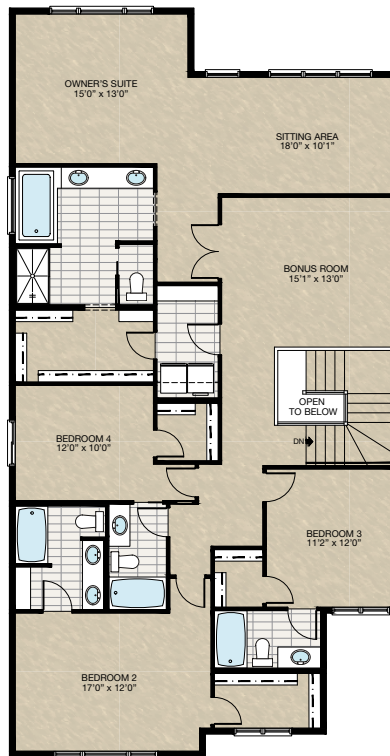
SELECT-9 OWNER SUITE WITH SITTING AREA & DUAL ENSUITE OPTION

- Add 231 Sq.Ft. to upper floor
- Sitting area at owner suite in lieu of open to below
- Increase bonus room by 3'0"
- Reduced owner suite by 3'0"
- Additional wire shelving to owner WIC
- Additional 1'0" vanity to owner ensuite
- Relocate ensuite entrance
- Added 60" x 40" frosted window to Bedroom 2 ensuite



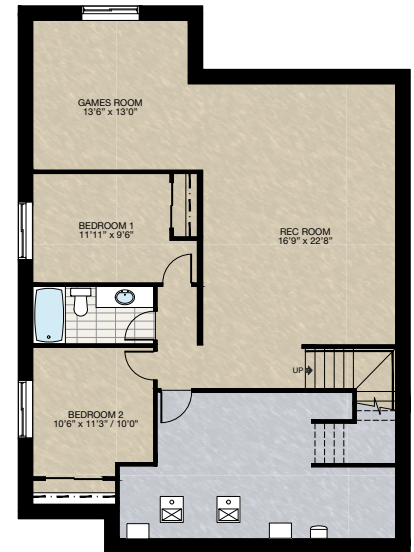
SELECT-10 OWNER SUITE WITH SITTING AREA & 4 UPPER FLOOR BATHROOM OPTION

- Add 231 Sq.Ft. to upper floor
- Sitting area at owner suite in lieu of open to below
- Increase bonus room by 3'0"
- Reduced owner suite by 3'0"
- Additional wire shelving to owner WIC
- Additional 1'0" vanity to owner ensuite
- Relocate ensuite entrance
- Added wire shelving to Bedroom 2 ensuite



SELECT-11 BASEMENT DEVELOPMENT OPTION

- 1048 Sq.Ft. developed area
- Includes finished basement stairwell
- Relocate 2'8" passage door from top of stairwell to mechanical room
- Upgrade basement windows from 24" high to 36"
- Add 1 riser to stairwell for 9'0" basement ceiling (8'9" headroom clearance)



HARDWOOD

DECK

CARPET

CONCRETE

TILE

LVP

tricohomes.com

FEATURED SPRINGFIELD OPTIONS

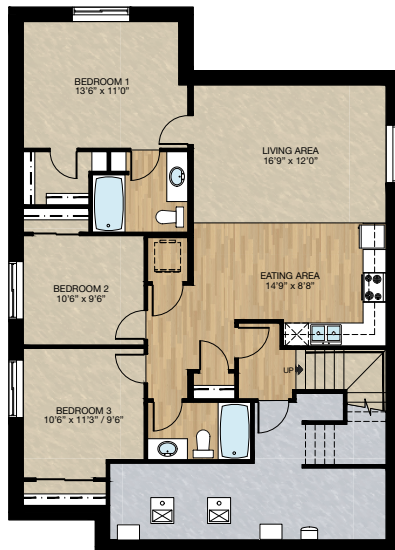


SELECT-12

SECONDARY SUITE OPTION 1

*must combined with side entrance global option for standard lot

- Walk-out lot side entrance not required
- 1106 Sq.Ft. Developed area
- Includes finished basement stairwell
- Upgrade basement window from 24" high to 36"
- Add 1 riser to stairwell for 9'0" basement ceiling (8'9" headroom clearance)
- Includes washer & dryer rough-in only
- Add 60" x 36" hsl window to living area

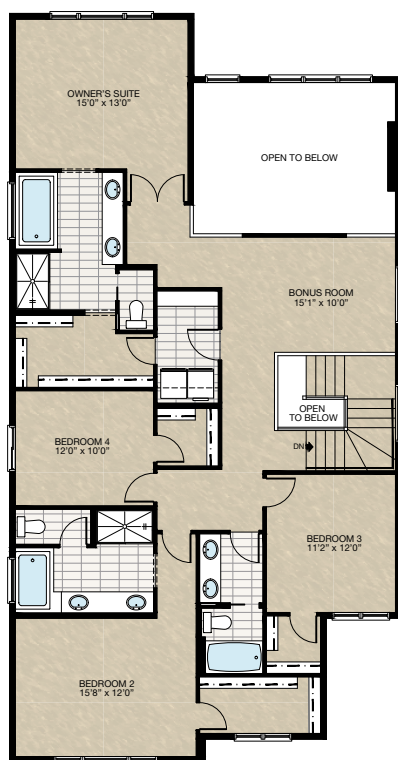


FEATURED OPTIONS

THE
SPRINGFIELD
3249 SQ.FT.

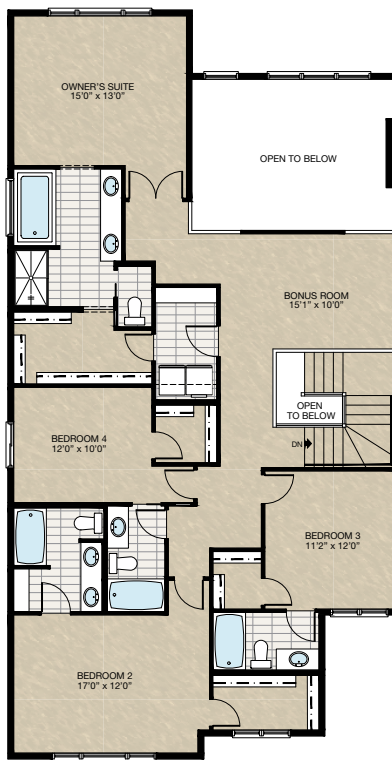
SELECT-6 DUAL OWNER SUITE OPTION

- Reduced owner's suite by 3'0" to accommodate bedroom #2 ensuite
- Additional 1'0" vanity to owner's ensuite
- Added 60" x 40" frosted window to bedroom #2 ensuite



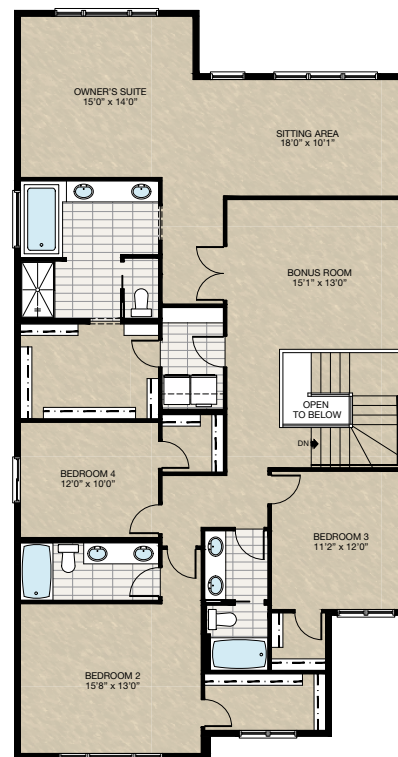
SELECT-7 UPPER FLOOR 4 BATH OPTION

- Reduced owner suite by 3'0" to accommodate 4th bathroom
- Added wire shelving to Bedroom 2 bathroom



SELECT-8 OWNER SUITE WITH SITTING AREA OPTION

- Add 231 Sq.Ft. to upper floor
- Sitting area at owner suite in lieu of open to below
- Increase bonus room by 3'0"
- Reduced owner suite by 2'0"
- Increase 2'0" to owner WIC with additional wire shelving
- Additional 1'0" vanity to owner ensuite
- Relocate ensuite entrance



Trico Homes is a local home builder, with new single and multi-family homes for sale in Calgary, Okotoks, Chestermere, Cochrane, Airdrie and DeWinton. Offering a great selection of starter, move-up, semi-estate and ultra-estate models in numerous communities, you'll find the house that's just right for you! Look for this model and many others in Ambleton, Belmont, Brawn Landing, Carrington, Chelsea, Chelsea Court Townhomes, Colours of Seton Townhomes, Cornerbrook, D'Arcy, Creek View, Dawson's Landing, Glacier Ridge, Hamilton Heights, Harmony, Homestead, Huxley, Legacy, Midtown, Pine Creek, Precedence, Rivercrest, Seton, Sirocco, Southbow Landing, Verona West Townhomes, West Springs, West83 Townhomes and Wolf Willow.

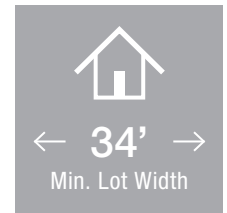



Renderings are artist's conceptions only and may vary by community and lot selection. Prices, floorplans, specifications and dimensions are approximate and are subject to change without notice. E.&O.E. © All rights reserved, including the right if reproduction in the whole or in part without the permission of Trico Homes.

Plan updated as of March 20, 2024.



tricohomes.com



 5 Bedroom

 4 Bathrooms

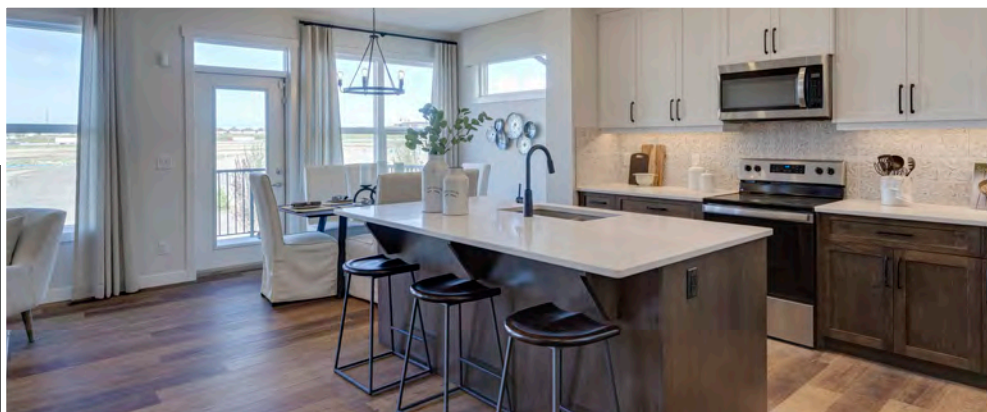
 Double Garage

THE SPRINGHILL

2664 SQ.FT.

☐ Elements Specification

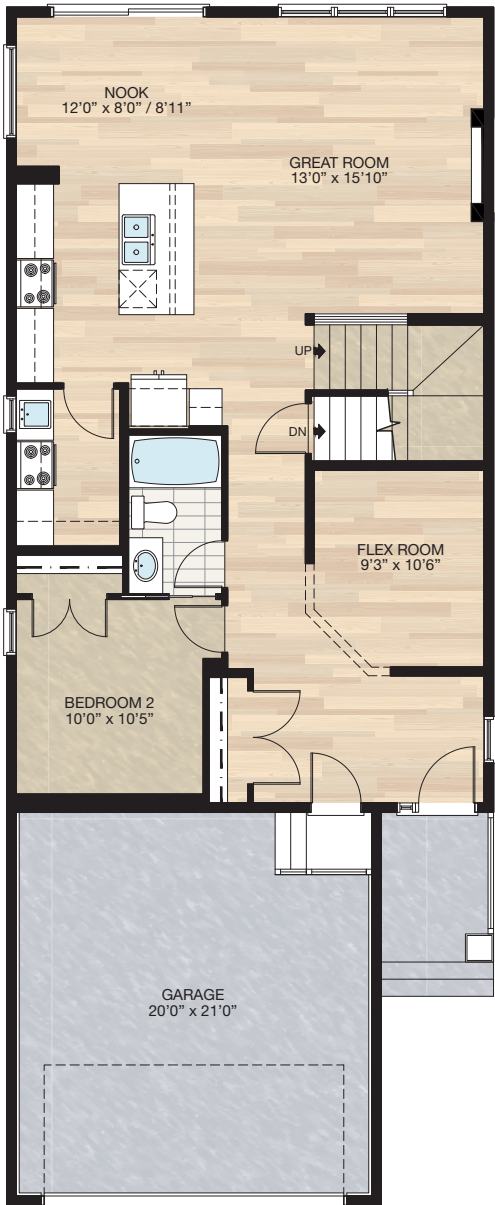
☐ Elite Specification



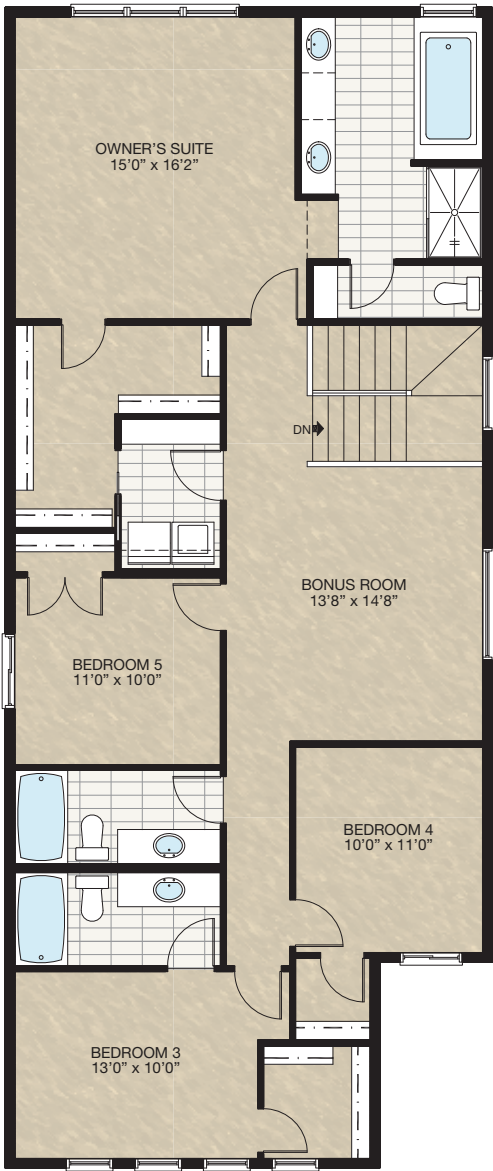
Trico Homes™
The Heart of Homebuilding®

STANDARD PLAN

THE
SPRINGHILL
2664 SQ.FT.



MAIN
1118 SQ.FT.



UPPER
1546 SQ.FT.

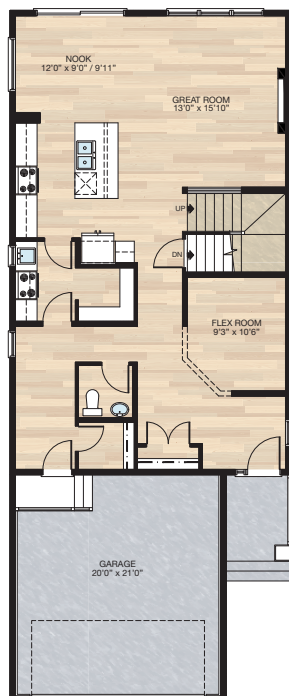


FEATURED OPTIONS



SELECT-1 SPICE KITCHEN, PANTRY & MUDROOM OPTION

- Delete Bedroom 2
- Delete tub/shower unit & vanity
- Kitchen moves towards garage 12" to increase nook size
- Decrease spice kitchen lower cabinet 12" & add 24" of upper cabinets
- Add pantry to spice kitchen
- Move 2'8" spice kitchen door to mudroom & replace with 2'6" door
- Change front entry closet doors from two 2'0" to two 2'6"
- Move garage door to mudroom
- Adjust window in mudroom



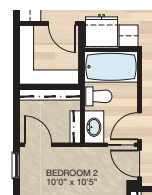
SELECT-2 PANTRY & MUDROOM OPTION

- Delete spice kitchen & replace with pantry shelves
 - Reduce pantry 7.5" this space is added to mudroom & walk-in closet
 - Mudroom window & lighting adjusted
 - Pantry door reduced to 2'6"
- *MUST be combined with **SELECT-1**



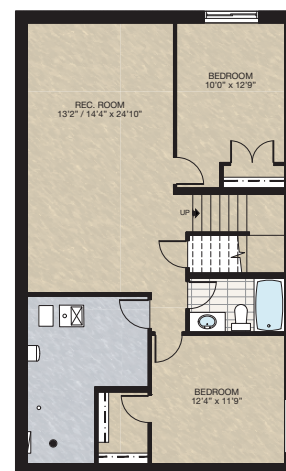
SELECT-3 PANTRY & WALK-IN CLOSET OPTION

- Delete spice kitchen
- Delete 24" x 40" window
- Change 2'8" door to 2'6" door to new pantry
- Add pantry shelving
- Change two 2'0" doors to 2'6" door to bedroom closet
- Add light & switch to bedroom closet
- Add additional shelving to bedroom closet



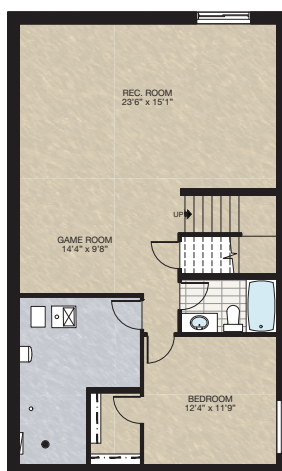
SELECT-5 BASEMENT DEVELOPMENT OPTION 2

- 815 Sq.Ft. developed area
- Includes finished basement stairwell
- Delete 2'8" door at top of stairwell
- Add one riser to stairwell for 9'0" basement ceiling (8'9" headroom clearance)
- 60" x 24" DHSL changed to 60" x 36" DHSL
- 60" x 24" HSL changed to 60" x 36" HSL



SELECT-4 BASEMENT DEVELOPMENT OPTION 1

- 815 Sq.Ft. developed area
- Includes finished basement stairwell
- Delete 2'8" door at top of stairwell
- Add one riser to stairwell for 9'0" basement ceiling (8'9" headroom clearance)
- 60" x 24" DHSL changed to 60" x 36" DHSL
- 60" x 24" HSL changed to 60" x 36" HSL



HARDWOOD

DECK

CARPET

CONCRETE

TILE

LVP

tricohomes.com

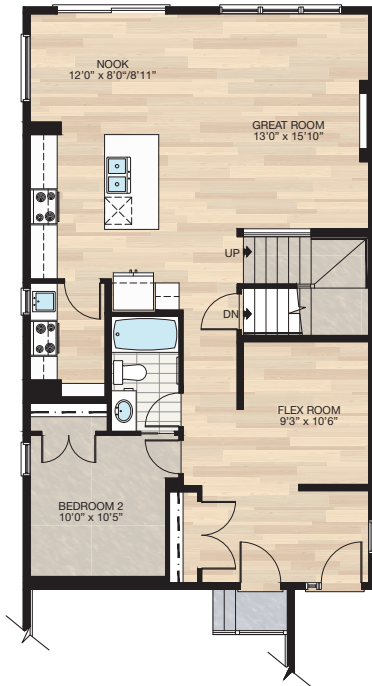
FEATURED SPRINGHILL OPTIONS



SELECT-8

ALTERNATIVE SPICE KITCHEN OPTION

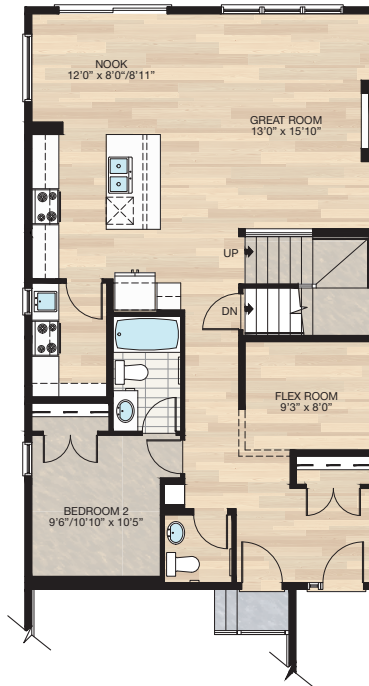
- Reduced lower cabinet space by 15" at spice kitchen
 - Added 21" upper cabinet to spice kitchen
 - Deleted two 66"x 16" wire shelving
 - Added four 39" x 12" wire shelving
- *CANNOT be combined with **SELECT-1,2 & 3** main floor options



SELECT-9

MAIN FLOOR HALF BATH OPTION

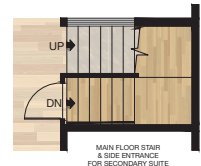
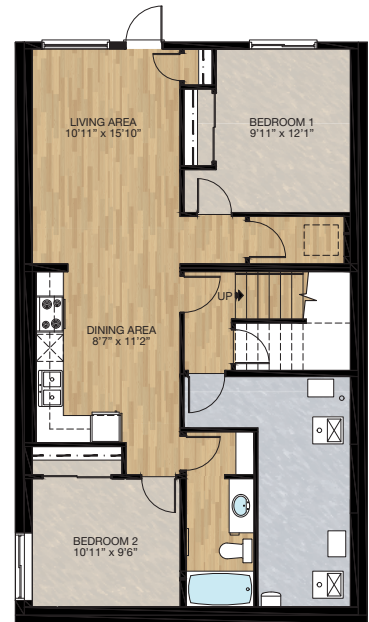
- Reduced bedroom 2 to accommodate half bath space
- Reduced flex room size to accommodate foyer closet
- Relocated foyer closet
- Added MDF capped niche
- Deleted 2'6" pocket door to bathroom in bedroom 2
- Change flush beam above foyer closet to drop beam to allow mechanical access to upper floor



SECONDARY SUITE

WALK-OUT OPTION

- 822 Sq.Ft. Basement development
- Included finished basement stairwell
- Add 1 riser to stairwell for 9' basement ceiling (8'9" headroom clearance)
- Change window from 60" x 24" DHS to 60" x 36" DHS at bedroom 2
- Rear windows and rear exterior entrance included with walkout basement upgrade



HARDWOOD

DECK

CARPET

CONCRETE

TILE

LVP

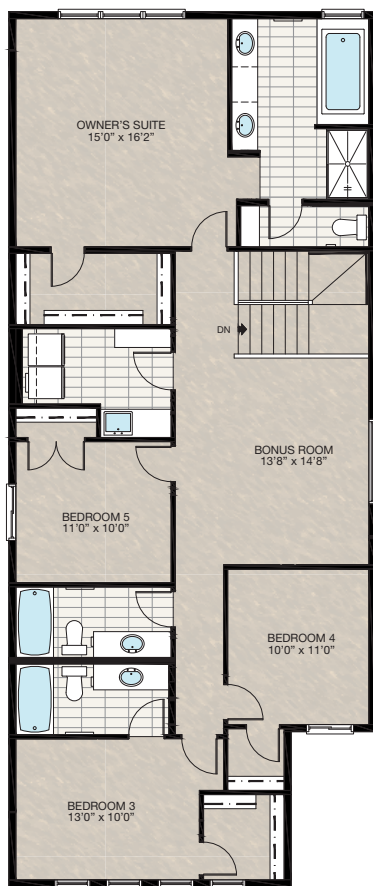
FEATURED SPRINGHILL OPTIONS

← 34' →
Min. Lot Width

SELECT-10

LAUNDRY ROOM OPTION

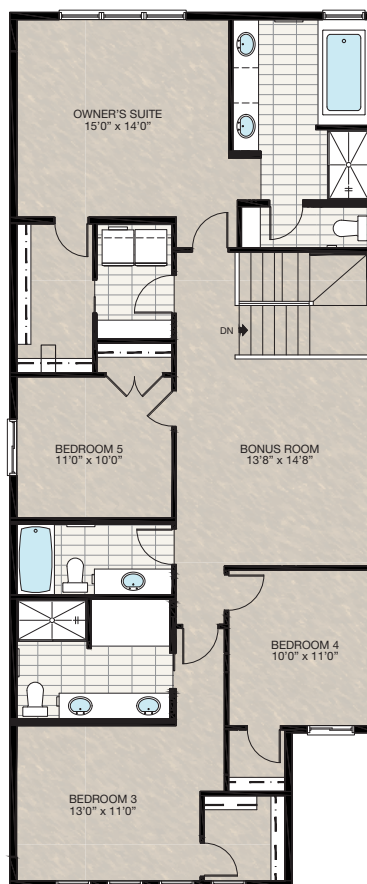
- Reduced owner's bedroom WIC wire shelving
- Deleted 3-way switch at owner's suite WIC
- Reduced laundry room linen shelving length by 16"
- Deleted 2'4" pocket door between WIC and laundry room
- Added 60" lower cabinet with sink



SELECT-11

SECOND ENSUITE 5 PIECE OPTION

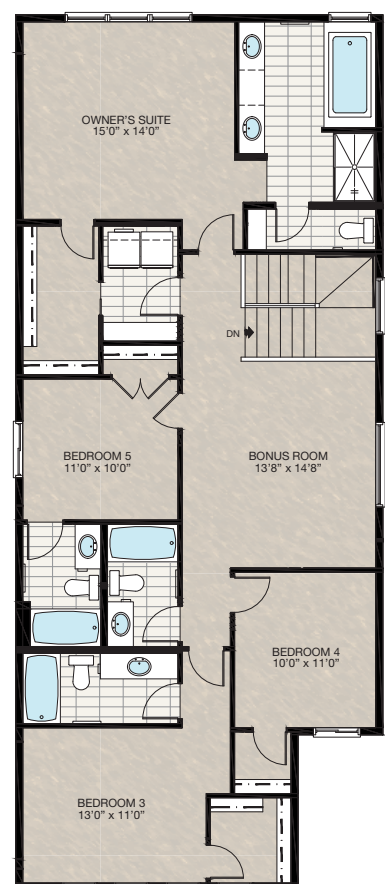
- Reduced owner's suite by 2'0"
- Redesigned owner's suite WIC & laundry area
- Deleted 3-way switch at owner's suite WIC
- Additional 1'0" to bedroom 2



SELECT-12

UPPER FLOOR 4 BATHROOM OPTION

- Reduced owner's suite by 2'0"
- Redesigned owner's suite WIC & laundry area
- Deleted 3-way switch at owner's suite WIC
- Additional 1'0" to bedroom 2



HARDWOOD

DECK

CARPET

CONCRETE

TILE

LVP

tricohomes.com

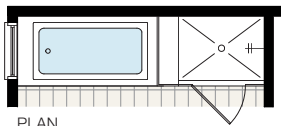
FEATURED OPTIONS

THE
SPRINGHILL
2664 SQ.FT.

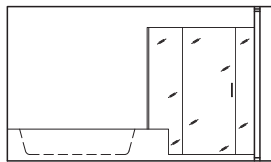


SELECT-7 GLASS & TILE ENSUITE SHOWER

- Delete fibreglass shower tray
- Add 10mm glass, tile curb & shower base
- Extend tub tiled deck



PLAN

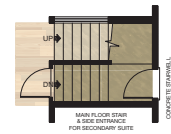
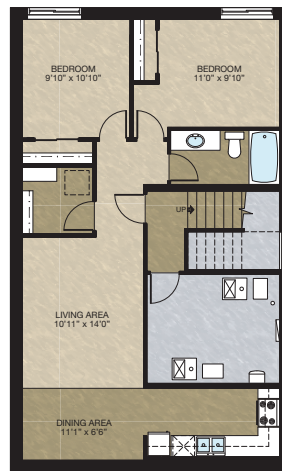


ELEVATION



SECONDARY SUITE BASEMENT DEVELOPMENT OPTION 1

- 815 Sq.Ft. Developed area
- Includes finished basement stairwell
- Delete 2'8" door at top of stairwell
- Add one riser to stairwell for 9'0" basement ceiling (8'9" headroom clearance)
- 60" x 24" DHSL changed to 60" x 36" DHSL
- 60" x 24" HSL changed to 60" x 36" HSL



Trico Homes is a local home builder, with new single and multi-family homes for sale in Calgary, Okotoks, Chestermere, Cochrane, Airdrie and DeWinton. Offering a great selection of starter, move-up, semi-estate and ultra-estate models in numerous communities, you'll find the house that's just right for you! Look for this model and many others in Ambleton, Arbour Lake, Belmont, Carrington, Chelsea, Cornerbrook, D'Arcy, Dawson's Landing, Glacier Ridge, Hamilton Heights, Homestead, Legacy, Midtown, Pine Creek, Precedence, Rivercrest, Seton, Sirocco, Verona West Townhomes, West83 Townhomes and Wolf Willow.

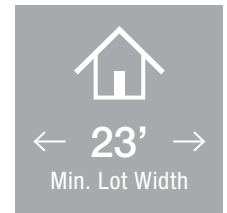



Renderings are artist's conceptions only and may vary by community and lot selection. Prices, floorplans, specifications and dimensions are approximate and are subject to change without notice. E.&O.E. © All rights reserved, including the right of reproduction in the whole or in part without the permission of Trico Homes.


Plan updated as of April 6, 2023.



tricohomes.com



 3 Bedrooms

 2.5 Bathrooms

THE WILLOW ZLL

1498 SQ.FT.

☐ Elements Specification

☐ Elite Specification

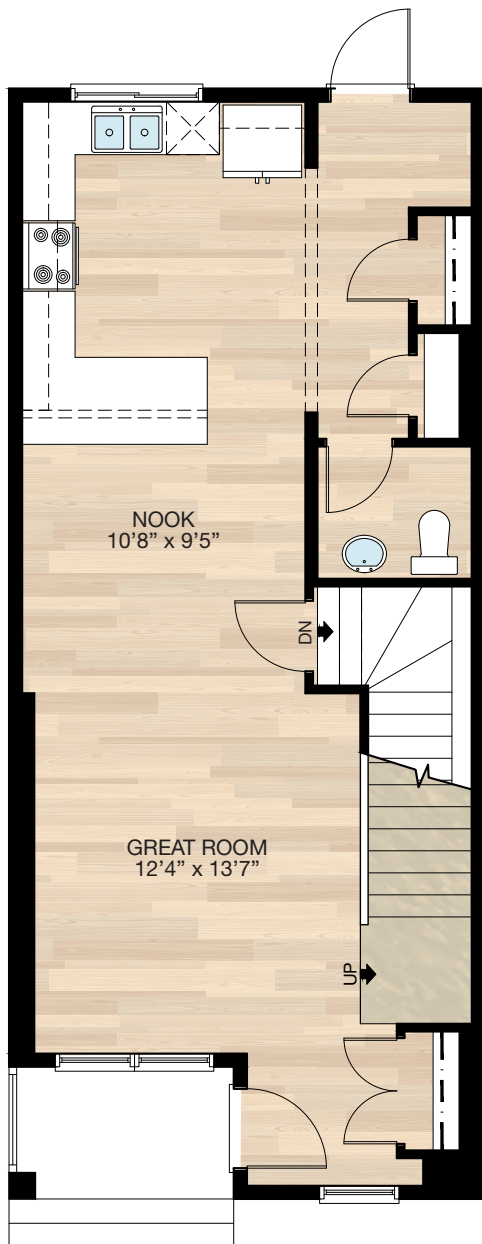
☐ Elite Plus Specification



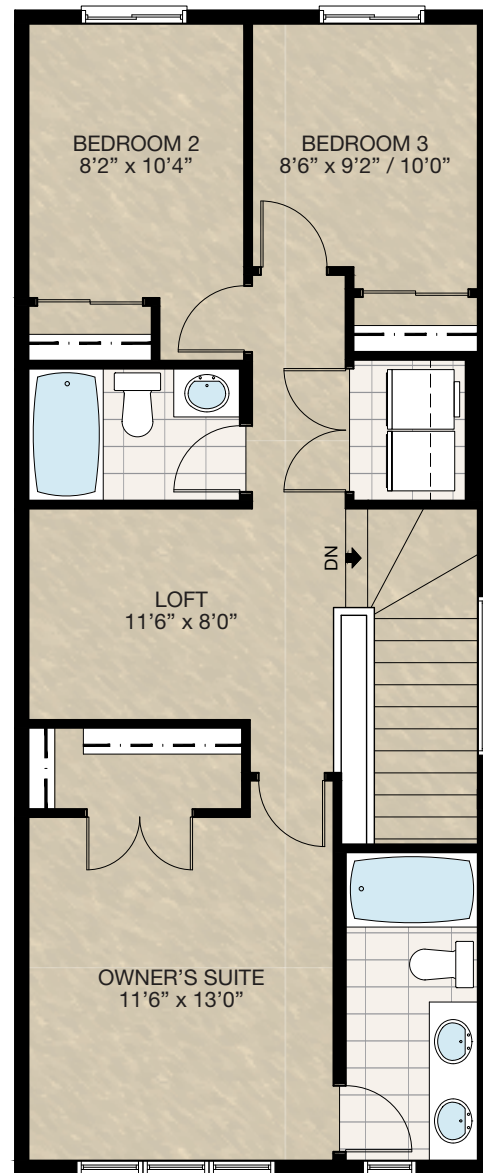
Trico Homes™
The Heart of Homebuilding®

STANDARD PLAN

THE
WILLOW
1498 SQ.FT.



MAIN
714 SQ.FT.



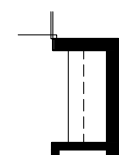
UPPER
784 SQ.FT.



FEATURED OPTIONS



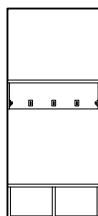
☐ **SELECT-1** REAR ENTRANCE BUILT-IN BENCH + SHELF OPTION



PLAN VIEW



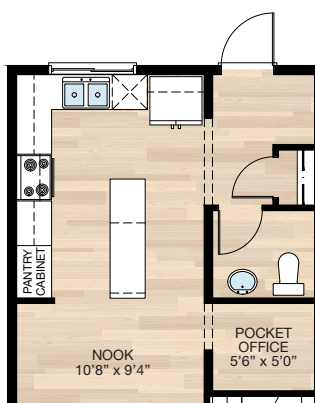
SIDE VIEW



FRONT VIEW

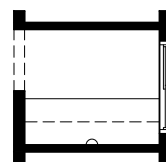
☐ **SELECT-2** ALTERNATE KITCHEN + POCKET OFFICE OPTION

- Add 48x20 HSL window to pocket office
- Delete pantry closet + shelving
- Add 36" pantry cabinet

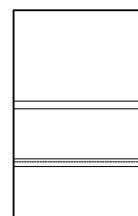


☐ **SELECT-4** POCKET OFFICE BUILT-IN DESK OPTION

- Must be combined with **SELECT-2**



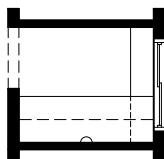
PLAN VIEW



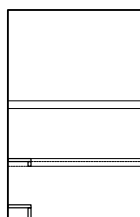
ELEVATION VIEW

☐ **SELECT-3** POCKET OFFICE BUILT-IN DESK + SIDE SHELF OPTION

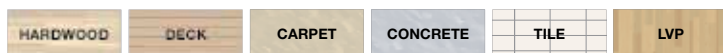
- Must be combined with **SELECT-2**



PLAN VIEW



ELEVATION VIEW



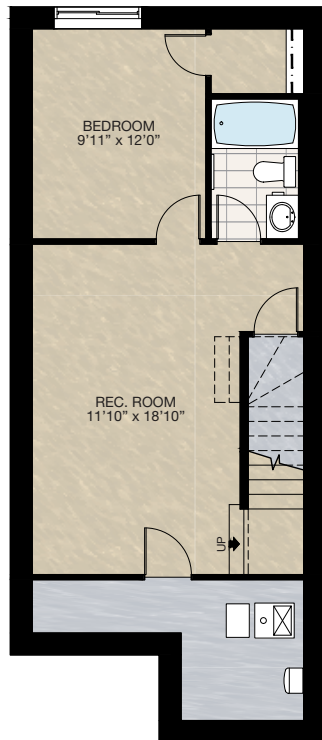
FEATURED OPTIONS

THE
WILLOW
1498 SQ.FT.

SELECT-5

BASEMENT DEVELOPMENT OPTION

- 471 Sq.Ft. basement development
- Add 1 riser to stairwell for 9'0" basement ceiling (8'9" headroom clearance)
- Included finished basement stairwell
- Relocate 2'8" passage door from top of stairwell to mech. room
- Change wall section to stubwall at top of stairwell
- Change nook 3-way light switching to 2-way
- Change 60" x 24" DSL window to 60" x 36" DSL



Trico Homes is a local home builder, with new single and multi-family homes for sale in Calgary, Okotoks, Chestermere, Cochrane, Airdrie and DeWinton. Offering a great selection of starter, move-up, semi-estate and ultra-estate models in numerous communities, you'll find the house that's just right for you! Look for this model and many others in Ambleton, Arbour Lake, Belmont, Carrington, Chelsea, Colours of Seton, Cornerbrook, D'Arcy, Dawson's Landing, Glacier Ridge, Hamilton Heights, Harmony, Homestead, Legacy, Midtown, Pine Creek, Precedence, Rivercrest, Seton, Sirocco, Verona West Townhomes, West83 Townhomes, West Springs and Wolf Willow.

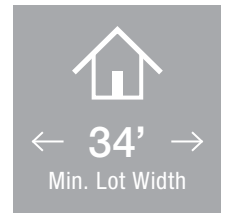


Renderings are artist's conceptions only and may vary by community and lot selection. Prices, floorplans, specifications and dimensions are approximate and are subject to change without notice. E.&O.E. © All rights reserved, including the right if reproduction in the whole or in part without the permission of Trico Homes.

Plan updated as of October 04, 2024.




tricohomes.com



← 34' →

Min. Lot Width

 1 Bedroom

 1½ Bathrooms

 Double Garage

THE WYNWOOD 26'

1227 SQ.FT.

☐ Elements Specification

☐ Elite Specification

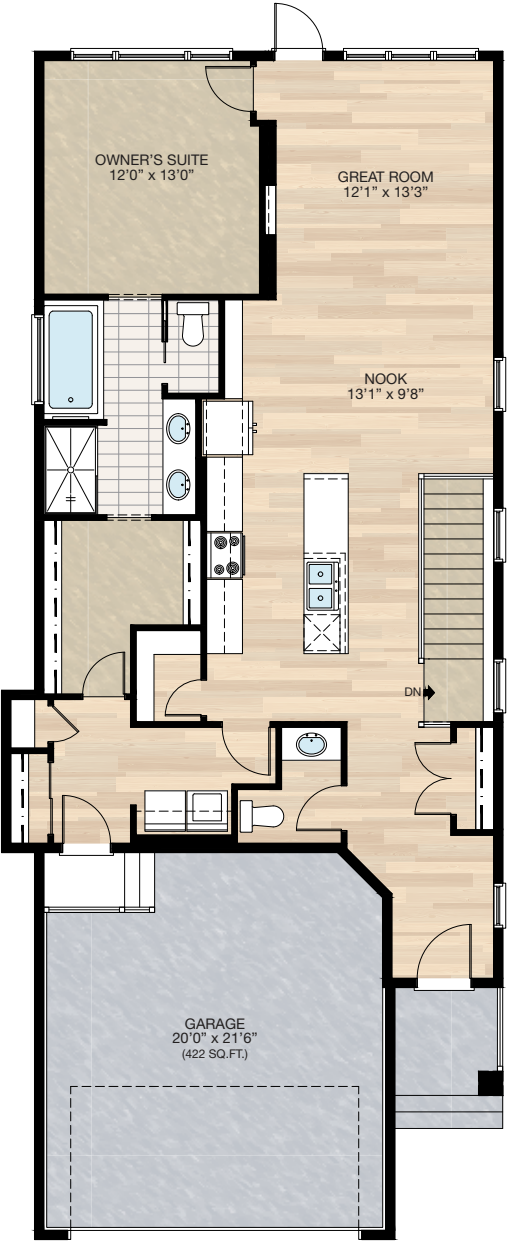


Trico Homes™

The Heart of Homebuilding®

STANDARD PLAN

THE
WYNWOOD
1227 SQ.FT.



MAIN
1227 SQ.FT.

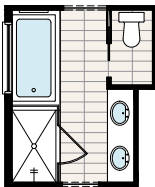
HARDWOOD	DECK	CARPET	CONCRETE	TILE	LVP
----------	------	--------	----------	------	-----

FEATURED OPTIONS



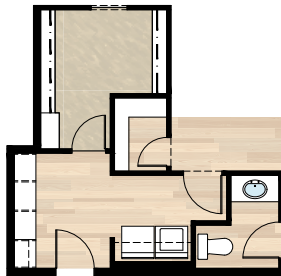
☐ **SELECT-1 ENSUITE OPTION**

- *CANNOT be combined with **SELECT-3 or 4** option
- Delete standard 36" x 60" fiberglass shower
- Add 40" x 60" tiled shower with 10mm glass
- Extend tub tiled ledge by 3.5" next to shower
- Relocate towel bar to opposite side of tub



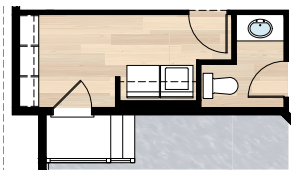
☐ **SELECT-2 MUDROOM MDF LOCKER OPTION**

- *CANNOT be combined with **SELECT-3 or 4** option
- Delete coat closet & linen closet at mudroom
- Add 8'0" locker & coat hooks with MDF backing
- Replace 30" of closet shelving in master walk-in closet with four 30" wide & 16" deep wire shelving for linen



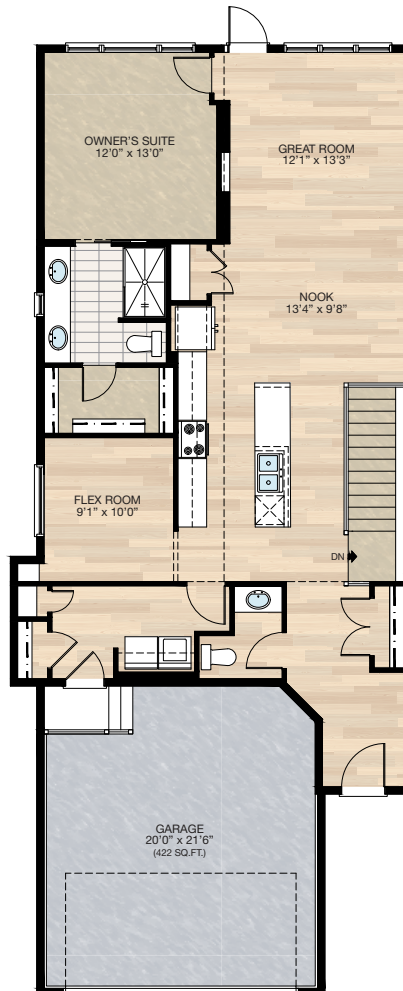
☐ **SELECT-4A MUDROOM LOCKER OPTION**

- *MUST be combined with **SELECT-4 Flex Room** option
- Delete coat & linen closet in mudroom
- Add 6'5½" MDF locker & coat hooks with MDF backing behind shelving



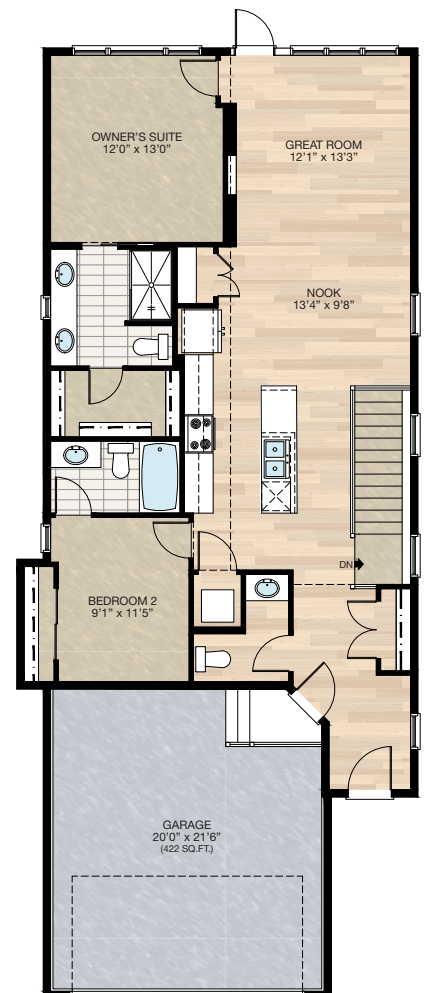
☐ **SELECT-4 FLEX ROOM OPTION**

- Delete 72" x 36" soaker tub at ensuite
- Delete 60" x 48" P frosted window at ensuite
- Add 20" x 48" P frosted window at ensuite between two sinks
- Vanity mirror to be two 24" x 42" centered over each sink
- Additional 22" of vanity at ensuite
- Reduced master walk-in closet & add 2'4" door
- Add 60" x 18" P window to flex room
- Delete 66" of the 12" deep cabinetry
- Add 15" cabinetry to main kitchen
- Delete walk-in pantry
- Add pantry closet with light outlet & switch - reduce mudroom closet & change door from 4'0" bi-pass doors to single 2'6" door
- Add four 18" deep MDF shelves to flex room



☐ **SELECT-3 2 BEDROOMS WITH DUAL ENSUITES OPTION**

- Delete 72" x 36" soaker tub at ensuite
- Delete 60" x 48" P frosted window at ensuite
- Add 20" x 48" P frosted window at ensuite between two sinks
- Vanity mirror to be two 24" x 42" centered over each sink
- Additional 20" of vanity at ensuite
- Reduced master walk-in closet & add 2'4" door
- Add 2nd bedroom with closet & 3-piece ensuite
- Add 24" x 72" VSL to Bedroom 2
- Delete 66" of 12" deep cabinetry at kitchen
- Delete walk-in pantry
- Add pantry closet
- Reduced kitchen island length by 14"
- Delete mudroom & relocate garage entrance
- Add stackable W/D laundry closet



HARDWOOD

DECK

CARPET

CONCRETE

TILE

LVP

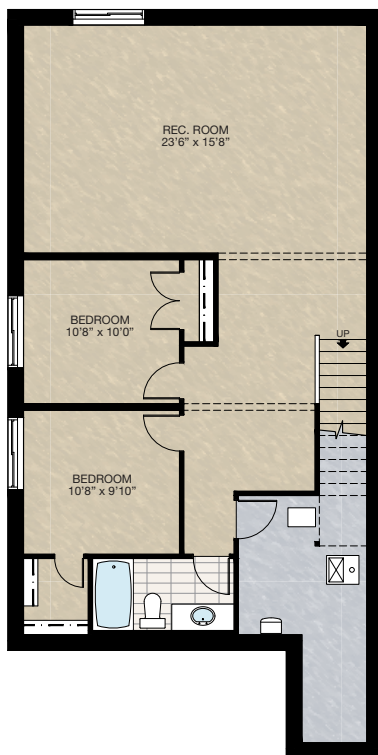
FEATURED OPTIONS

THE
WYNWOOD
1227 SQ.FT.

SELECT-5

BASEMENT DEVELOPMENT OPTION 1

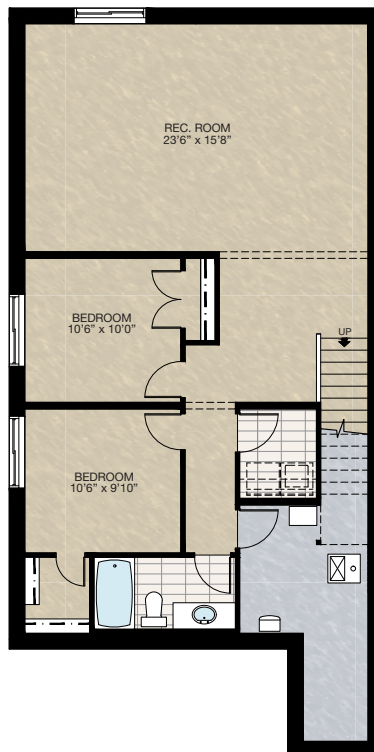
- 929 Sq.Ft. developed area
- Add 1 riser to finished stairwell for 9'0" basement ceiling (8'9" headroom clearance)
- All three basement windows upgraded from 24" High to 36" high
- 42" High stub wall added to stair



SELECT-6

BASEMENT DEVELOPMENT OPTION 2

- 930 Sq.Ft. developed area
- Add laundry room with washer & dryer rough-in
- Add 1 riser to finished stairwell for 9'0" basement ceiling (8'9" headroom clearance)
- All three basement windows upgraded from 24" High to 36" high
- 42" High stub wall added to stair



Trico Homes is a local home builder, with new single and multi-family homes for sale in Calgary, Okotoks, Chestermere, Cochrane, Airdrie and DeWinton. Offering a great selection of starter, move-up, semi-estate and ultra-estate models in numerous communities, you'll find the house that's just right for you! Look for this model and many others in Ambleton, Arbour Lake, Belmont, Carrington, Chelsea, Cornerbrook, D'Arcy, Dawson's Landing, Glacier Ridge, Hamilton Heights, Homestead, Legacy, Midtown, Pine Creek, Precedence, Rivercrest, Seton, Sirocco, Verona West Townhomes, West83 Townhomes and Wolf Willow.

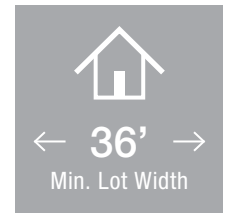



Renderings are artist's conceptions only and may vary by community and lot selection. Prices, floorplans, specifications and dimensions are approximate and are subject to change without notice. E.&O.E. © All rights reserved, including the right if reproduction in the whole or in part without the permission of Trico Homes.


Plan updated as of October 04, 2024.



tricohomes.com



 1 Bedroom

 1½ Bathrooms

 Double Garage

THE WYNWOOD 28'

1269 SQ.FT.

☐ Elements Specification

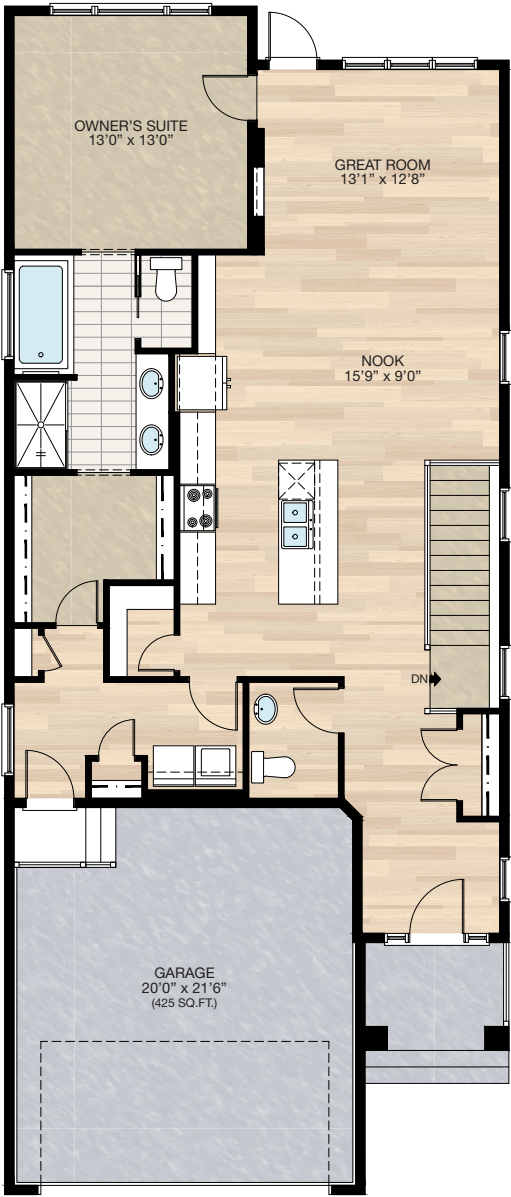
☐ Elite Specification



Trico Homes™
The Heart of Homebuilding®

STANDARD PLAN

THE
WYNWOOD
1269 SQ.FT.



MAIN
1269 SQ.FT.

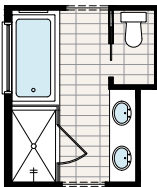


FEATURED OPTIONS



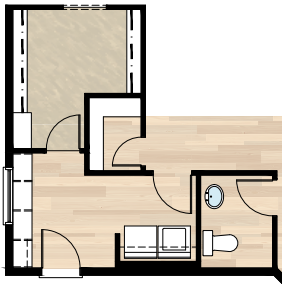
SELECT-1 ENSUITE OPTION

- *CANNOT be combined with **SELECT-3** or **4** option
- Delete standard 36" x 60" fiberglass shower
- Add 40" x 60" tiled shower with 10mm glass
- Extend tub tiled ledge by 3.5" next to shower
- Relocate towel bar to opposite side of tub



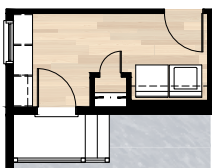
SELECT-2 MUDROOM MDF LOCKER OPTION

- *CANNOT be combined with **SELECT-3** or **4** option
- Delete coat closet & linen closet at mudroom
- Add 8'0" locker & coat hooks with MDF backing
- Replace 30" of closet shelving in master walk-in closet with four 30" wide and 16" deep wire shelving for linen
- Re-center mudroom window between shelves & wall
- Garage entrance door moved 1'4" towards W/D



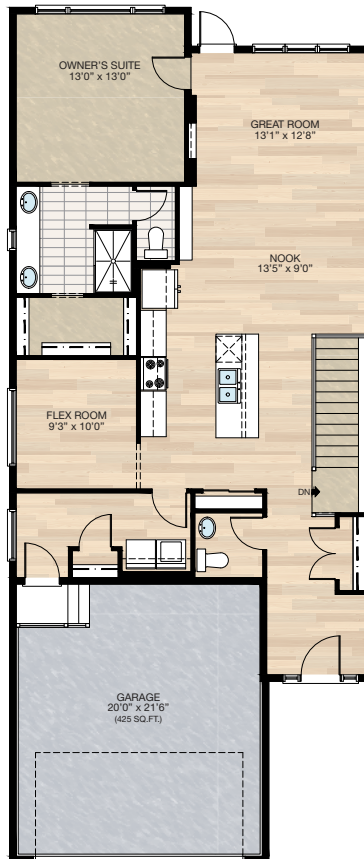
SELECT-4A MUDROOM LOCKER OPTION

- *MUST be combined with **SELECT-4** Flex Room option
- Reduce width of coat closet in mudroom
- Delete 48" x 18" P window in mudroom
- Add 36" x 18" P window to mudroom
- Add 6'-6" MDF locker & coat hooks with MDF backing
- Extend wood landing at garage entry by 12"



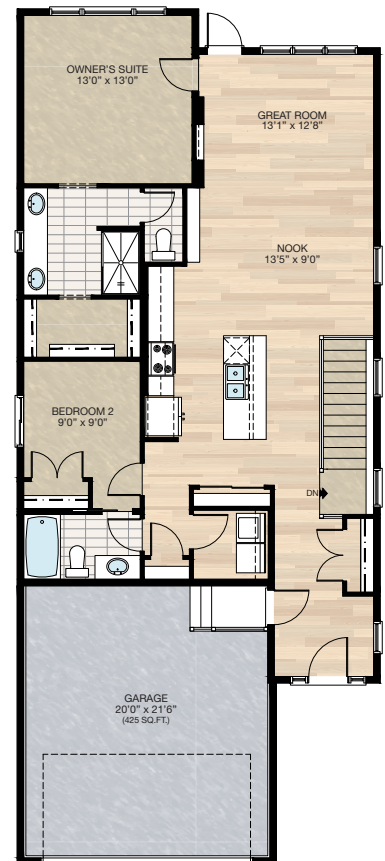
SELECT-4 FLEX ROOM OPTION

- Delete 72" x 36" soaker tub at ensuite
- Delete 60" x 48" P frosted window at ensuite
- Add 20" x 48" P frosted window at ensuite between two sinks
- Vanity mirror to be two 24" x 42" centered over each sink
- Additional 22" of vanity at ensuite
- Water closet door changed from pocket door to swing door
- Reduced master walk-in closet
- Add 72" x 18" P window to flex room
- Delete 11" cabinetry at kitchen
- Delete walk-in pantry
- Add pantry closet
- Upgrade kitchen 3 way switch to 4 way switch
- Delete linen closet in mudroom
- Increase width to coat closet in mudroom



SELECT-3 2 BEDROOMS OPTION

- Delete 72" x 36" soaker tub at ensuite
- Delete 60" x 48" P frosted window at ensuite
- Add 20" x 48" P frosted window at ensuite between two sinks
- Vanity mirror to be two 24" x 42" centered over each sink
- Additional 22" of vanity at ensuite
- Change water closet door from pocket to swing door
- Reduced master walk-in closet
- Add 2nd bedroom with closet
- Add 3 piece main bath including a 2'6" pocket door access from Bedroom 2
- Upgrade single switch to 3 way switch in main bath
- Add 48" x 40" HSL to Bedroom 2
- Delete 1/2 bath
- Delete 8" cabinetry at kitchen
- Delete walk-in pantry
- Add pantry closet
- Upgrade kitchen 3 way switch to 4 way switch
- Delete mudroom & 48" x 18" P window & relocate garage entrance



HARDWOOD

DECK

CARPET

CONCRETE

TILE

LVP

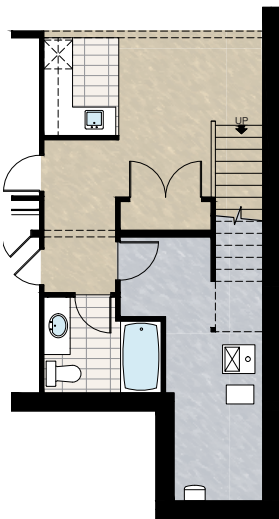
tricohomes.com

FEATURED WYNWOOD 28' OPTIONS



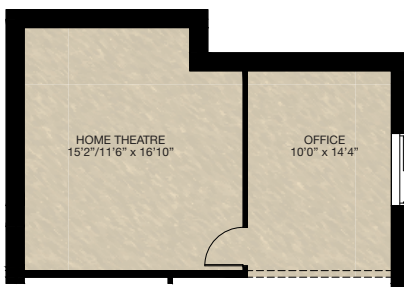
SELECT-6B BAR & STORAGE CLOSET OPTION

- Must combined with **SELECT-6** basement development **OPTION 1**
- Extended stubwall at stair next to storage closet
- Add tile to bar area



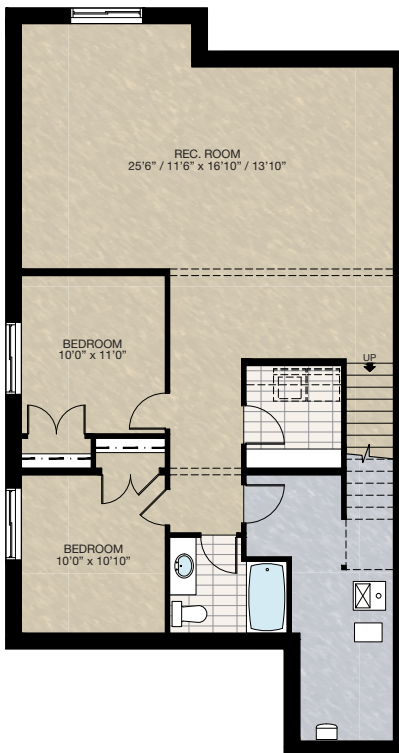
SELECT-6C HOME THEATRE OPTION

- Must combined with **SELECT-6** or **7** basement development option
- Relocated window from rear to side



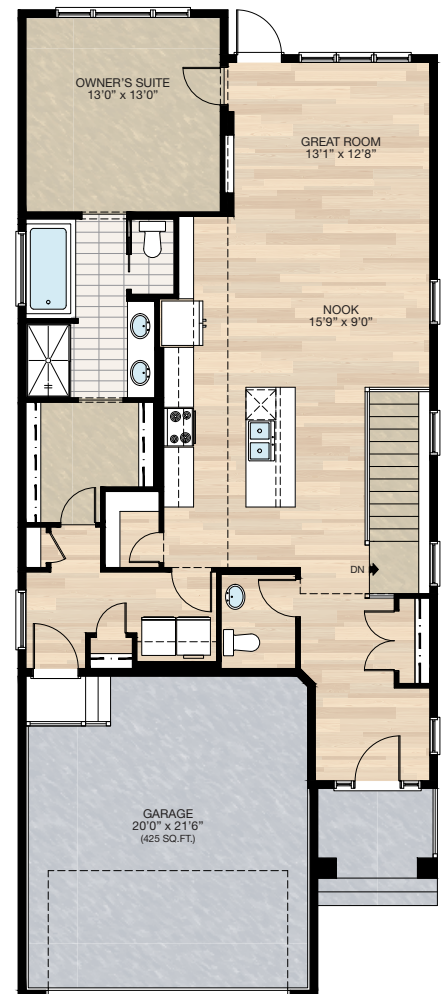
SELECT-7 BASEMENT DEVELOPMENT OPTION 2

- 978 Sq.Ft. developed area
- Add 1 riser to finished stairwell for 9'0" basement ceiling (8'9" headroom clearance)
- Add laundry room with washer & dryer rough-in
- All three basement windows upgraded from 24" high to 36" high



SELECT-8 VAULTED CEILING OPTION

- Vaulted ceiling to kitchen, nook & great room
- Interior vault slope to be 1/2 of the main roof slope

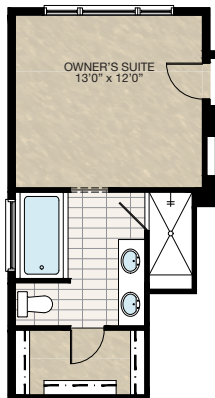


FEATURED OPTIONS

THE
WYNWOOD
1269 SQ.FT.

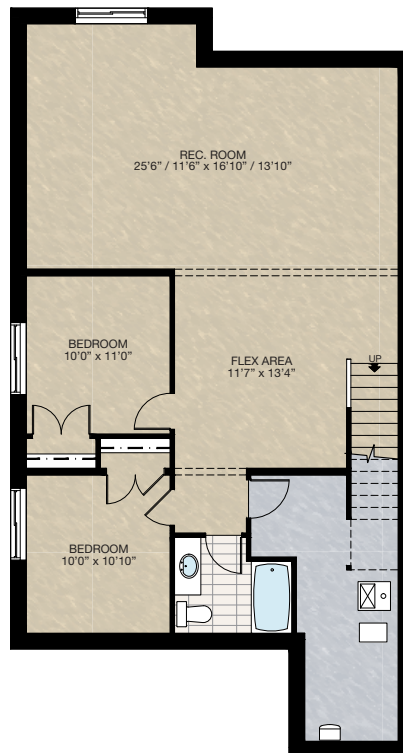
SELECT-5 ENSUITE OPTION 2

- *MUST combine with **SELECT-3** or **4** option
- Add 72" x 36" soaker tub with 4" tiled deck
- Delete 27.5" length of vanity
- Delete 20" x 48" P frosted window
- Add 60" x 48" P frosted window
- Reduced master bedroom length by 12"
- Delete 36" x 60" fibreglass shower unit
- Add 36" x 81" tiled shower with 10mm glass door & 12" tiled bench



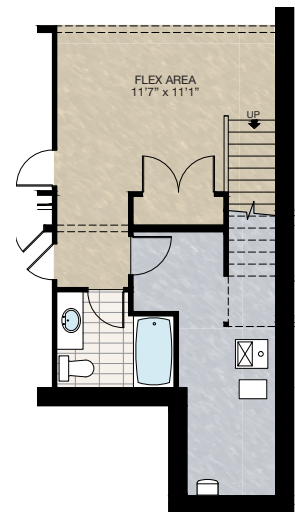
SELECT-6 BASEMENT DEVELOPMENT OPTION 1

- 978 Sq.Ft. developed area
- Add 1 riser to finished stairwell for 9'0" basement ceiling (8'9" headroom clearance)
- All three basement windows upgraded from 24" high to 36" high
- Stub wall added to stairs



SELECT-6A STORAGE CLOSET OPTION

- Must combined with **SELECT-6** basement development **OPTION 1**
- Extended stubwall at stair next to storage closet



Trico Homes is a local home builder, with new single and multi-family homes for sale in Calgary, Okotoks, Chestermere, Cochrane, Airdrie and DeWinton. Offering a great selection of starter, move-up, semi-estate and ultra-estate models in numerous communities, you'll find the house that's just right for you! Look for this model and many others in Ambleton, Arbour Lake, Belmont, Carrington, Chelsea, Cornerbrook, D'Arcy, Dawson's Landing, Glacier Ridge, Hamilton Heights, Homestead, Legacy, Midtown, Pine Creek, Precedence, Rivercrest, Seton, Sirocco, Verona West Townhomes, West83 Townhomes and Wolf Willow.



Renderings are artist's conceptions only and may vary by community and lot selection. Prices, floorplans, specifications and dimensions are approximate and are subject to change without notice. E.&O.E. © All rights reserved, including the right if reproduction in the whole or in part without the permission of Trico Homes.

Plan updated as of October 04, 2024.



tricohomes.com