
 1 Bedroom

 1½ Bathrooms

 Double Garage

# THE WYNWOOD 26'

1227 SQ.FT.

☐ Elements Specification

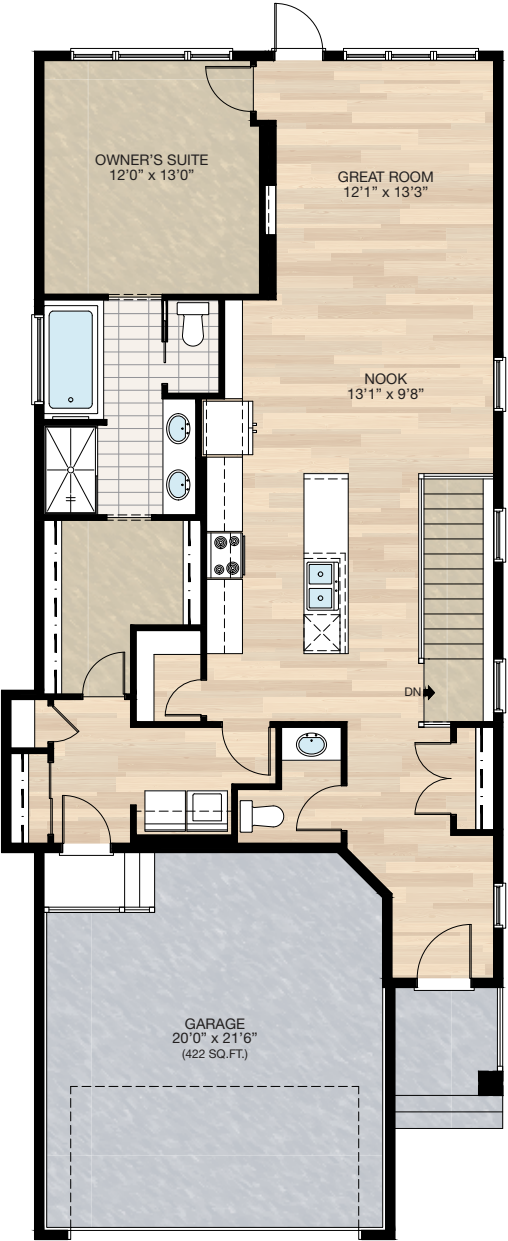
☐ Elite Specification



Trico Homes™  
The Heart of Homebuilding®

# STANDARD PLAN

THE  
WYNWOOD  
1227 SQ.FT.



**MAIN**  
1227 SQ.FT.

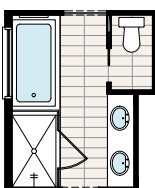
HARDWOOD	DECK	CARPET	CONCRETE	TILE	LVP
----------	------	--------	----------	------	-----

# FEATURED OPTIONS



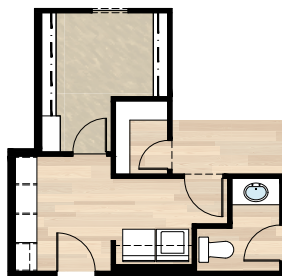
## SELECT-1 ENSUITE OPTION

- \*CANNOT be combined with **SELECT-3 or 4** option
- Delete standard 36" x 60" fiberglass shower
- Add 40" x 60" tiled shower with 10mm glass
- Extend tub tiled ledge by 3.5" next to shower
- Relocate towel bar to opposite side of tub



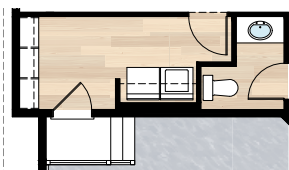
## SELECT-2 MUDROOM MDF LOCKER OPTION

- \*CANNOT be combined with **SELECT-3 or 4** option
- Delete coat closet & linen closet at mudroom
- Add 8'0" locker & coat hooks with MDF backing
- Replace 30" of closet shelving in master walk-in closet with four 30" wide & 16" deep wire shelving for linen



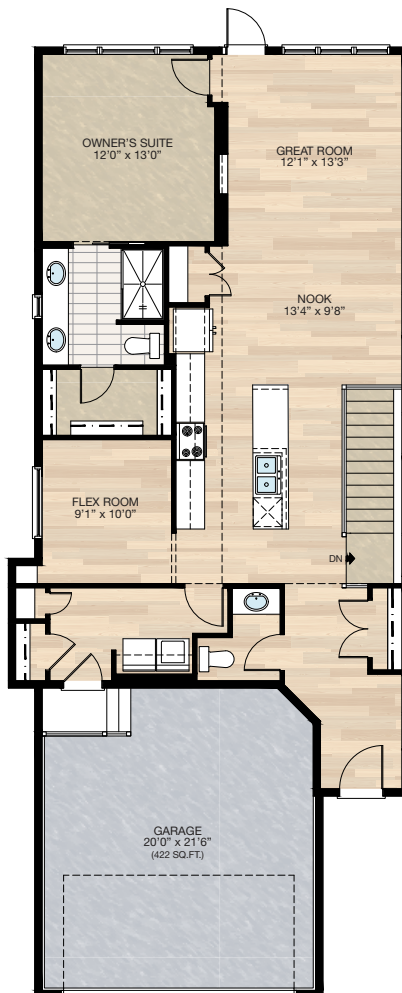
## SELECT-4A MUDROOM LOCKER OPTION

- \*MUST combined with **SELECT-4 Flex Room** option
- Delete coat & linen closet in mudroom
- Add 6'5½" MDF locker & coat hooks with MDF backing behind shelving



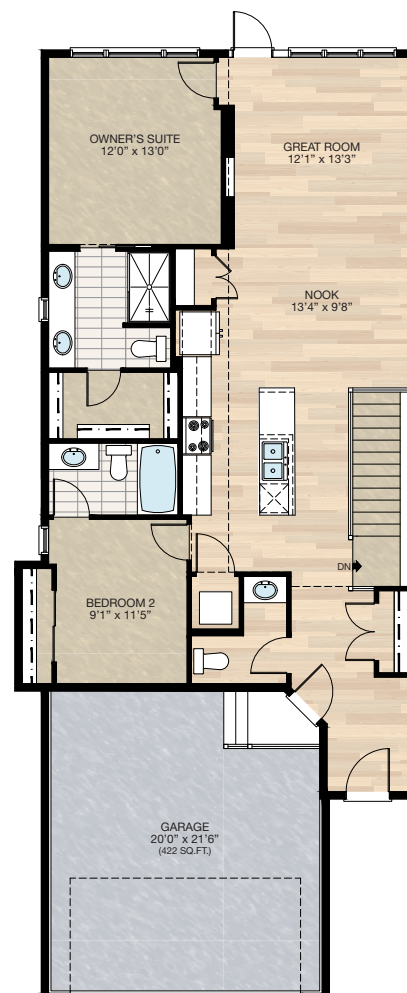
## SELECT-4 FLEX ROOM OPTION

- Delete 72" x 36" soaker tub at ensuite
- Delete 60" x 48" P frosted window at ensuite
- Add 20" x 48" P frosted window at ensuite between two sinks
- Vanity mirror to be two 24" x 42" centered over each sink
- Additional 22" of vanity at ensuite
- Reduced master walk-in closet & add 2'4" door
- Add 60" x 18" P window to flex room
- Delete 66" of the 12" deep cabinetry
- Add 15" cabinetry to main kitchen
- Delete walk-in pantry
- Add pantry closet with light outlet & switch - reduce mudroom closet & change door from 4'0" bi-pass doors to single 2'6" door
- Add four 18" deep MDF shelves to flex room



## SELECT-3 2 BEDROOMS WITH DUAL ENSUITES OPTION

- Delete 72" x 36" soaker tub at ensuite
- Delete 60" x 48" P frosted window at ensuite
- Add 20" x 48" P frosted window at ensuite between two sinks
- Vanity mirror to be two 24" x 42" centered over each sink
- Additional 20" of vanity at ensuite
- Reduced master walk-in closet & add 2'4" door
- Add 2nd bedroom with closet & 3-piece ensuite
- Add 24" x 72" VSL to Bedroom 2
- Delete 66" of 12" deep cabinetry at kitchen
- Delete walk-in pantry
- Add pantry closet
- Reduced kitchen island length by 14"
- Delete mudroom & relocate garage entrance
- Add stackable W/D laundry closet



HARDWOOD

DECK

CARPET

CONCRETE

TILE

LVP

tricohomes.com

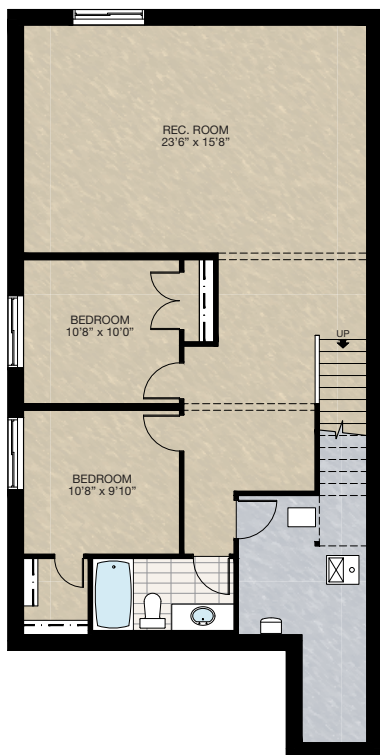
# FEATURED OPTIONS

THE  
WYNWOOD  
1227 SQ.FT.

## SELECT-5

### BASEMENT DEVELOPMENT OPTION 1

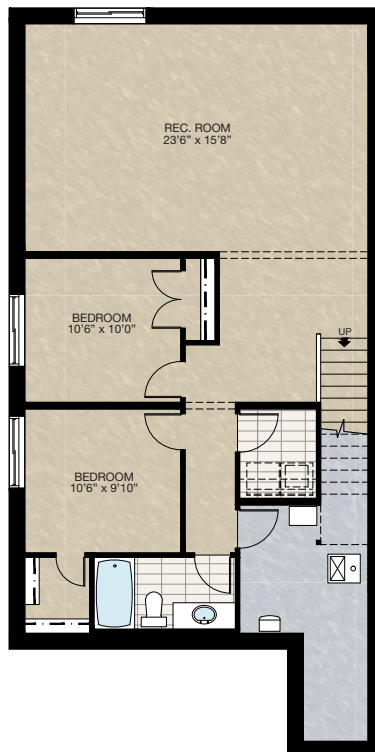
- 929 Sq.Ft. developed area
- Add 1 riser to finished stairwell for 9'0" basement ceiling (8'9" headroom clearance)
- All three basement windows upgraded from 24" High to 36" high
- 42" High stub wall added to stair



## SELECT-6

### BASEMENT DEVELOPMENT OPTION 2

- 930 Sq.Ft. developed area
- Add laundry room with washer & dryer rough-in
- Add 1 riser to finished stairwell for 9'0" basement ceiling (8'9" headroom clearance)
- All three basement windows upgraded from 24" High to 36" high
- 42" High stub wall added to stair



Trico Homes is a local home builder, with new single and multi-family homes for sale in Calgary, Okotoks, Chestermere, Cochrane, Airdrie and DeWinton. Offering a great selection of starter, move-up, semi-estate and ultra-estate models in numerous communities, you'll find the house that's just right for you! Look for this model and many others in Ambleton, Arbour Lake, Belmont, Carrington, Chelsea, Cornerbrook, D'Arcy, Dawson's Landing, Glacier Ridge, Hamilton Heights, Homestead, Legacy, Midtown, Pine Creek, Precedence, Rivercrest, Seton, Sirocco, Verona West Townhomes, West83 Townhomes and Wolf Willow.



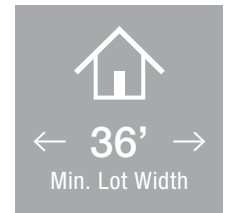
Renderings are artist's conceptions only and may vary by community and lot selection. Prices, floorplans, specifications and dimensions are approximate and are subject to change without notice. E.&O.E. © All rights reserved, including the right of reproduction in the whole or in part without the permission of Trico Homes.


Plan updated as of October 04, 2024.




tricohomes.com





 1 Bedroom

 1½ Bathrooms

 Double Garage

# THE WYNWOOD 28'

1269 SQ.FT.

☐ Elements Specification

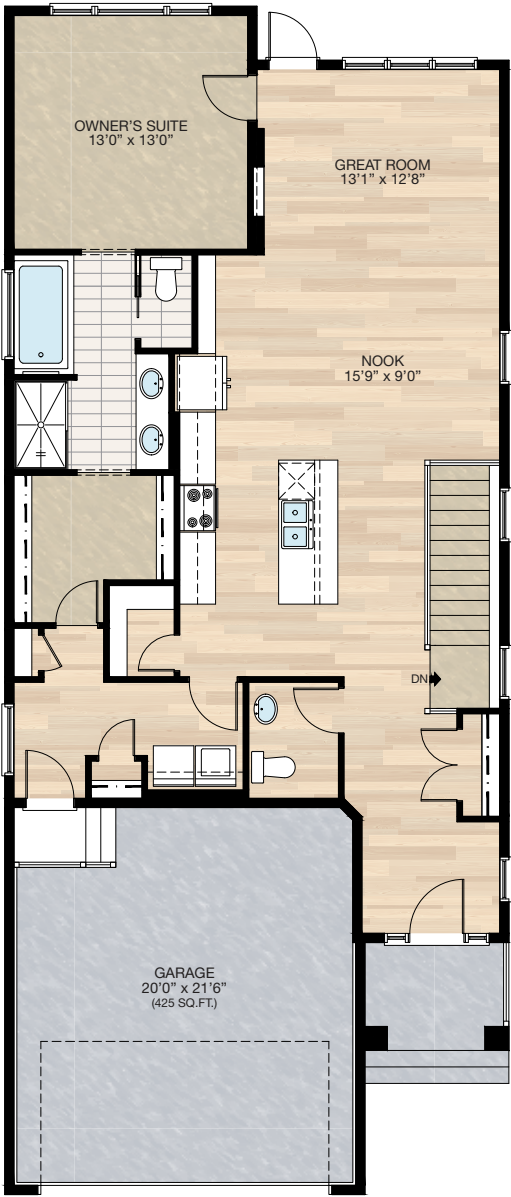
☐ Elite Specification



Trico Homes™  
The Heart of Homebuilding®

# STANDARD PLAN

THE  
WYNWOOD  
1269 SQ.FT.



**MAIN**  
1269 SQ.FT.

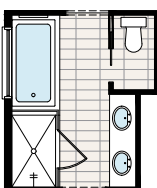


# FEATURED OPTIONS



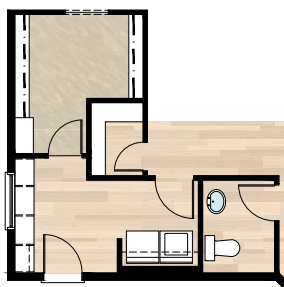
## SELECT-1 ENSUITE OPTION

- \*CANNOT be combined with **SELECT-3** or **4** option
- Delete standard 36" x 60" fiberglass shower
- Add 40" x 60" tiled shower with 10mm glass
- Extend tub tiled ledge by 3.5" next to shower
- Relocate towel bar to opposite side of tub



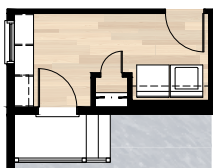
## SELECT-2 MUDROOM MDF LOCKER OPTION

- \*CANNOT be combined with **SELECT-3** or **4** option
- Delete coat closet & linen closet at mudroom
- Add 8'0" locker & coat hooks with MDF backing
- Replace 30" of closet shelving in master walk-in closet with four 30" wide and 16" deep wire shelving for linen
- Re-center mudroom window between shelves & wall
- Garage entrance door moved 1'4" towards W/D



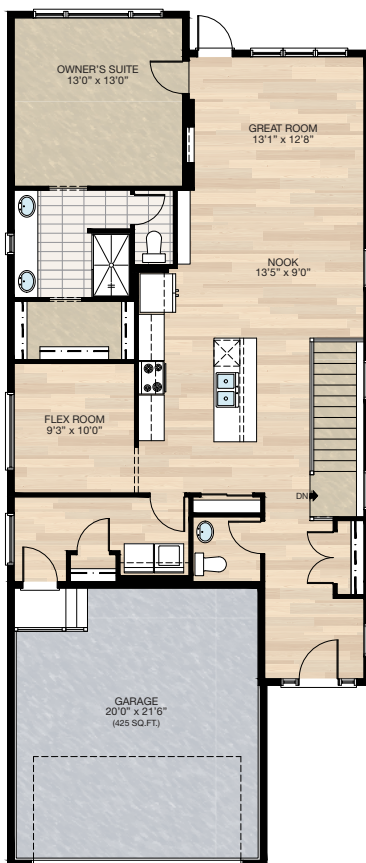
## SELECT-4A MUDROOM LOCKER OPTION

- \*MUST be combined with **SELECT-4** Flex Room option
- Reduce width of coat closet in mudroom
- Delete 48" x 18" P window in mudroom
- Add 36" x 18" P window to mudroom
- Add 6'-6" MDF locker & coat hooks with MDF backing
- Extend wood landing at garage entry by 12"



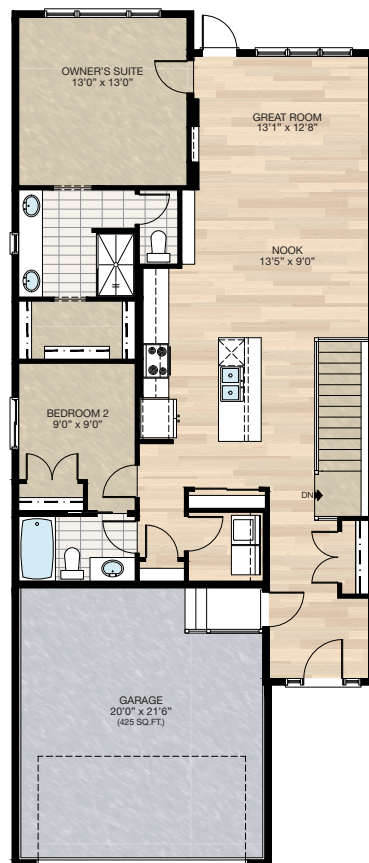
## SELECT-4 FLEX ROOM OPTION

- Delete 72" x 36" soaker tub at ensuite
- Delete 60" x 48" P frosted window at ensuite
- Add 20" x 48" P frosted window at ensuite between two sinks
- Vanity mirror to be two 24" x 42" centered over each sink
- Additional 22" of vanity at ensuite
- Water closet door changed from pocket door to swing door
- Reduced master walk-in closet
- Add 72" x 18" P window to flex room
- Delete 11" cabinetry at kitchen
- Delete walk-in pantry
- Add pantry closet
- Upgrade kitchen 3 way switch to 4 way switch
- Delete linen closet in mudroom
- Increase width to coat closet in mudroom



## SELECT-3 2 BEDROOMS OPTION

- Delete 72" x 36" soaker tub at ensuite
- Delete 60" x 48" P frosted window at ensuite
- Add 20" x 48" P frosted window at ensuite between two sinks
- Vanity mirror to be two 24" x 42" centered over each sink
- Additional 22" of vanity at ensuite
- Change water closet door from pocket to swing door
- Reduced master walk-in closet
- Add 2nd bedroom with closet
- Add 3 piece main bath including a 2'6" pocket door access from Bedroom 2
- Upgrade single switch to 3 way switch in main bath
- Add 48" x 40" HSL to Bedroom 2
- Delete 1/2 bath
- Delete 8" cabinetry at kitchen
- Delete walk-in pantry
- Add pantry closet
- Upgrade kitchen 3 way switch to 4 way switch
- Delete mudroom & 48" x 18" P window & relocate garage entrance



HARDWOOD

DECK

CARPET

CONCRETE

TILE

LVP

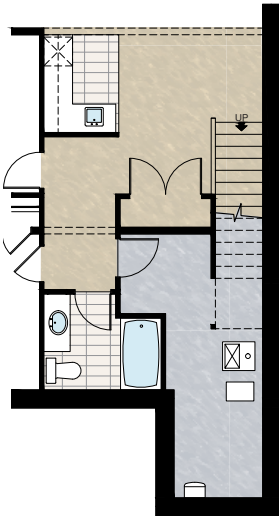
tricohomes.com

# FEATURED WYNWOOD 28' OPTIONS



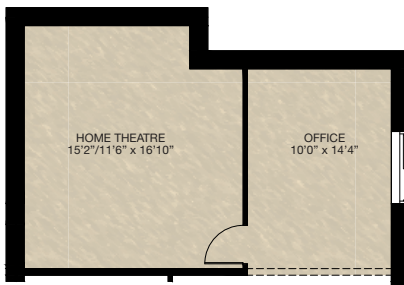
## **SELECT-6B** BAR & STORAGE CLOSET OPTION

- Must combined with **SELECT-6** basement development **OPTION 1**
- Extended stubwall at stair next to storage closet
- Add tile to bar area



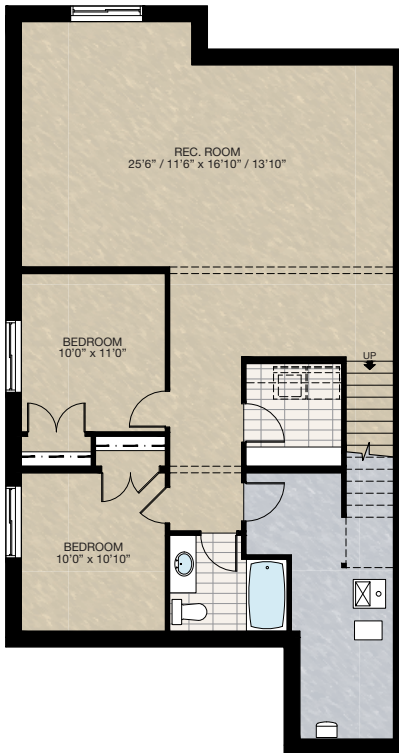
## **SELECT-6C** HOME THEATRE OPTION

- Must combined with **SELECT-6** or **7** basement development option
- Relocated window from rear to side



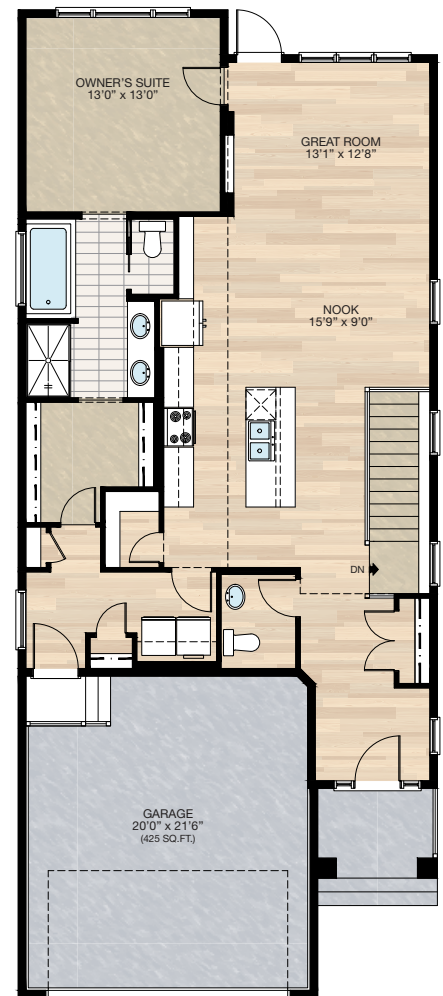
## **SELECT-7** BASEMENT DEVELOPMENT OPTION 2

- 978 Sq.Ft. developed area
- Add 1 riser to finished stairwell for 9'0" basement ceiling (8'9" headroom clearance)
- Add laundry room with washer & dryer rough-in
- All three basement windows upgraded from 24" high to 36" high



## **SELECT-8** VAULTED CEILING OPTION

- Vaulted ceiling to kitchen, nook & great room
- Interior vault slope to be 1/2 of the main roof slope

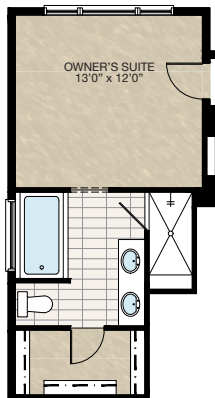


# FEATURED OPTIONS

THE  
WYNWOOD  
1269 SQ.FT.

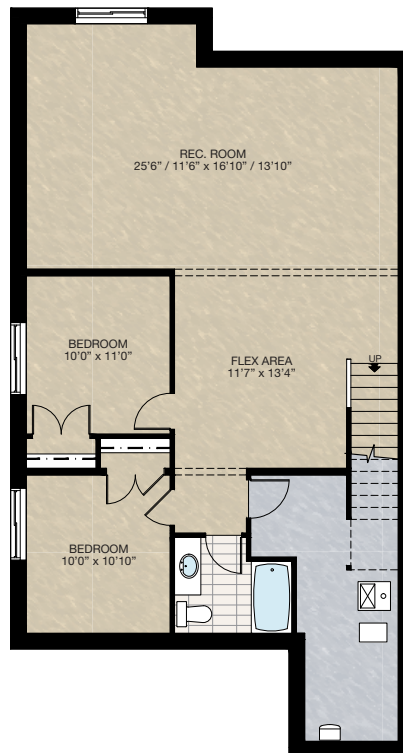
## SELECT-5 ENSUITE OPTION 2

- \*MUST combine with **SELECT-3** or **4** option
- Add 72" x 36" soaker tub with 4" tiled deck
- Delete 27.5" length of vanity
- Delete 20" x 48" P frosted window
- Add 60" x 48" P frosted window
- Reduced master bedroom length by 12"
- Delete 36" x 60" fibreglass shower unit
- Add 36" x 81" tiled shower with 10mm glass door & 12" tiled bench



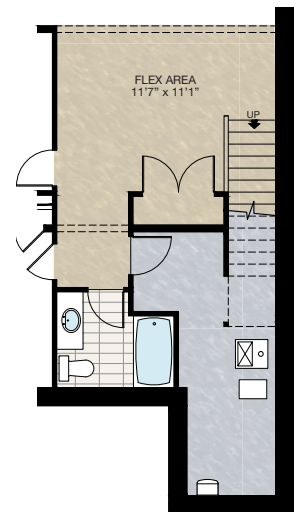
## SELECT-6 BASEMENT DEVELOPMENT OPTION 1

- 978 Sq.Ft. developed area
- Add 1 riser to finished stairwell for 9'0" basement ceiling (8'9" headroom clearance)
- All three basement windows upgraded from 24" high to 36" high
- Stub wall added to stairs



## SELECT-6A STORAGE CLOSET OPTION

- Must combined with **SELECT-6** basement development **OPTION 1**
- Extended stubwall at stair next to storage closet



Trico Homes is a local home builder, with new single and multi-family homes for sale in Calgary, Okotoks, Chestermere, Cochrane, Airdrie and DeWinton. Offering a great selection of starter, move-up, semi-estate and ultra-estate models in numerous communities, you'll find the house that's just right for you! Look for this model and many others in Ambleton, Arbour Lake, Belmont, Carrington, Chelsea, Cornerbrook, D'Arcy, Dawson's Landing, Glacier Ridge, Hamilton Heights, Homestead, Legacy, Midtown, Pine Creek, Precedence, Rivercrest, Seton, Sirocco, Verona West Townhomes, West83 Townhomes and Wolf Willow.



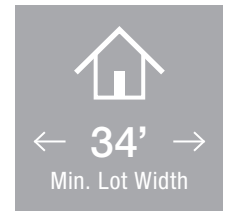
Renderings are artist's conceptions only and may vary by community and lot selection. Prices, floorplans, specifications and dimensions are approximate and are subject to change without notice. E.&O.E. © All rights reserved, including the right if reproduction in the whole or in part without the permission of Trico Homes.


Plan updated as of October 04, 2024.




tricohomes.com





 5 Bedroom

 4 Bathrooms

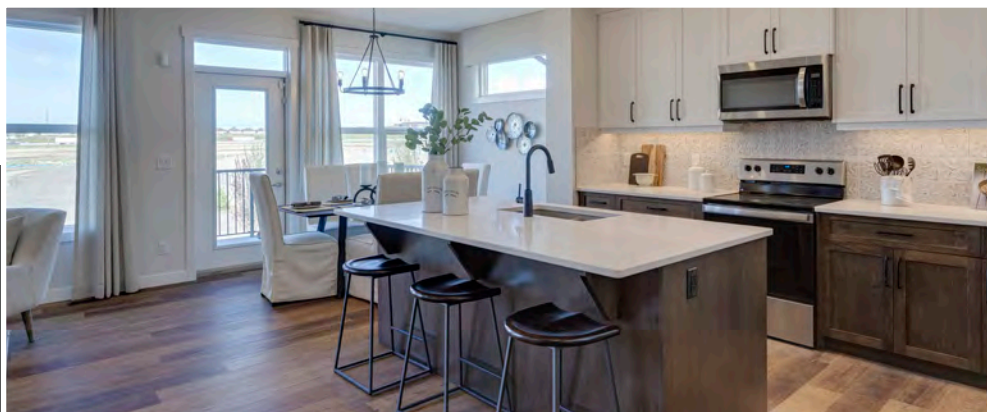
 Double Garage

# THE SPRINGHILL

2664 SQ.FT.

☐ Elements Specification

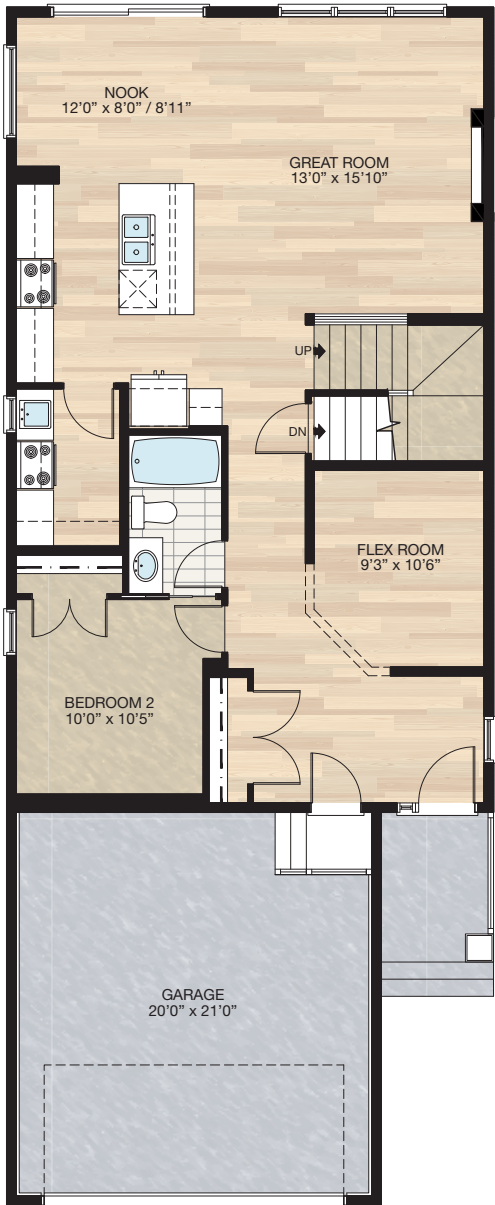
☐ Elite Specification



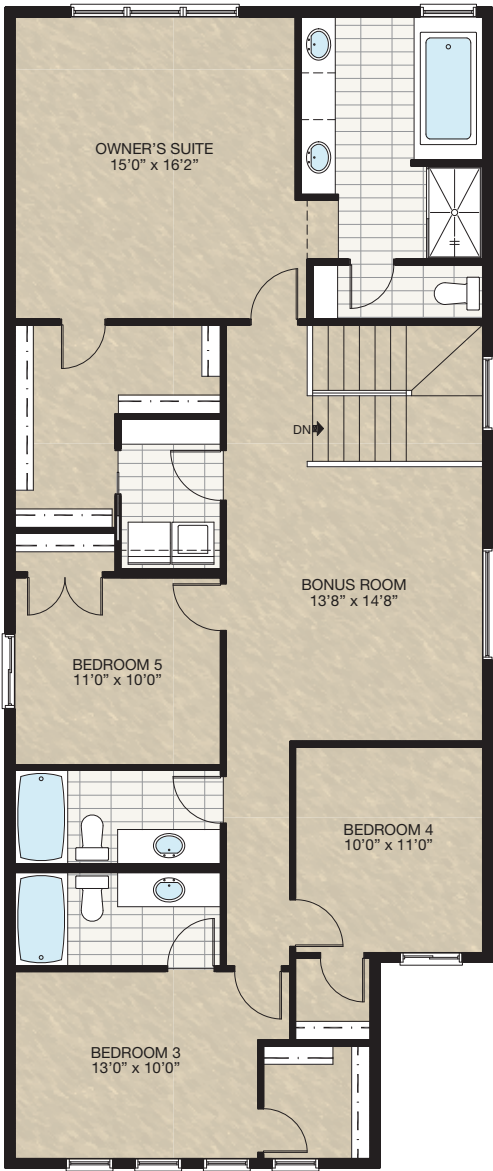
Trico Homes™  
The Heart of Homebuilding®

# STANDARD PLAN

THE  
SPRINGHILL  
2664 SQ.FT.



**MAIN**  
1118 SQ.FT.



**UPPER**  
1546 SQ.FT.

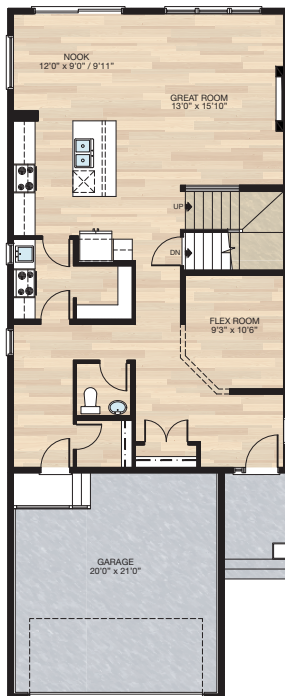


# FEATURED OPTIONS



## SELECT-1 SPICE KITCHEN, PANTRY & MUDROOM OPTION

- Delete Bedroom 2
- Delete tub/shower unit & vanity
- Kitchen moves towards garage 12" to increase nook size
- Decrease spice kitchen lower cabinet 12" & add 24" of upper cabinets
- Add pantry to spice kitchen
- Move 2'8" spice kitchen door to mudroom & replace with 2'6" door
- Change front entry closet doors from two 2'0" to two 2'6"
- Move garage door to mudroom
- Adjust window in mudroom



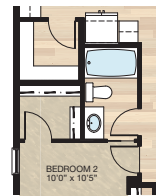
## SELECT-2 PANTRY & MUDROOM OPTION

- Delete spice kitchen & replace with pantry shelves
  - Reduce pantry 7.5" this space is added to mudroom & walk-in closet
  - Mudroom window & lighting adjusted
  - Pantry door reduced to 2'6"
- \*MUST be combined with **SELECT-1**



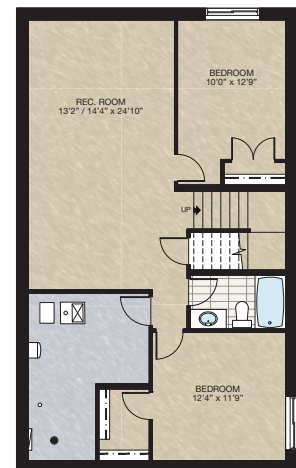
## SELECT-3 PANTRY & WALK-IN CLOSET OPTION

- Delete spice kitchen
- Delete 24" x 40" window
- Change 2'8" door to 2'6" door to new pantry
- Add pantry shelving
- Change two 2'0" doors to 2'6" door to bedroom closet
- Add light & switch to bedroom closet
- Add additional shelving to bedroom closet



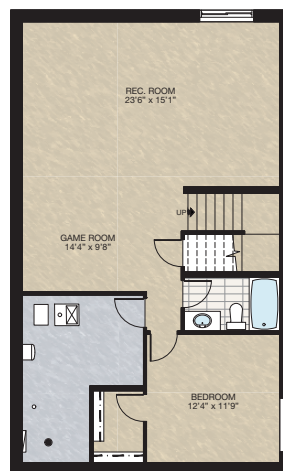
## SELECT-5 BASEMENT DEVELOPMENT OPTION 2

- 815 Sq.Ft. developed area
- Includes finished basement stairwell
- Delete 2'8" door at top of stairwell
- Add one riser to stairwell for 9'0" basement ceiling (8'9" headroom clearance)
- 60" x 24" DHSL changed to 60" x 36" DHSL
- 60" x 24" HSL changed to 60" x 36" HSL



## SELECT-4 BASEMENT DEVELOPMENT OPTION 1

- 815 Sq.Ft. developed area
- Includes finished basement stairwell
- Delete 2'8" door at top of stairwell
- Add one riser to stairwell for 9'0" basement ceiling (8'9" headroom clearance)
- 60" x 24" DHSL changed to 60" x 36" DHSL
- 60" x 24" HSL changed to 60" x 36" HSL



HARDWOOD

DECK

CARPET

CONCRETE

TILE

LVP

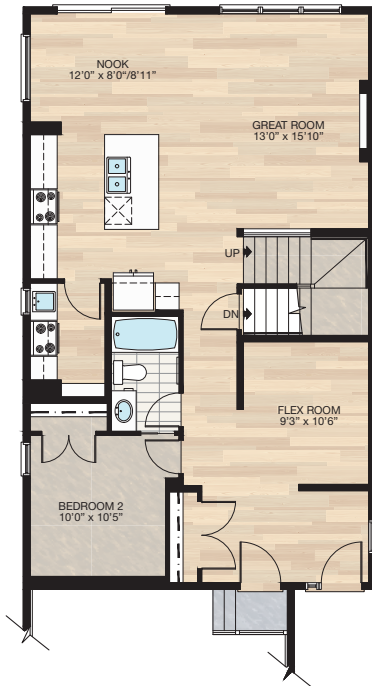
# FEATURED SPRINGHILL OPTIONS



## SELECT-8

### ALTERNATIVE SPICE KITCHEN OPTION

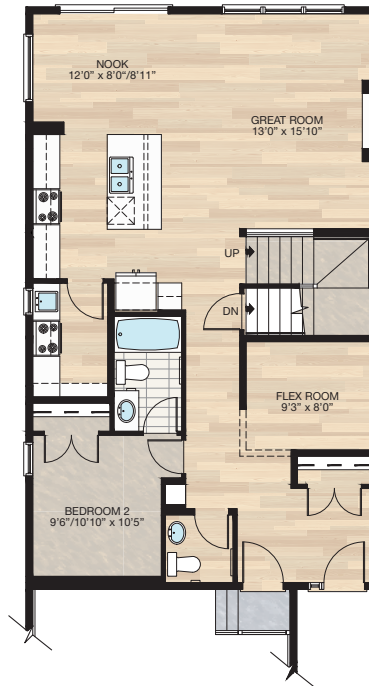
- Reduced lower cabinet space by 15" at spice kitchen
  - Added 21" upper cabinet to spice kitchen
  - Deleted two 66"x 16" wire shelving
  - Added four 39" x 12" wire shelving
- \*CANNOT be combined with **SELECT-1,2 & 3** main floor options



## SELECT-9

### MAIN FLOOR HALF BATH OPTION

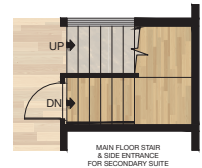
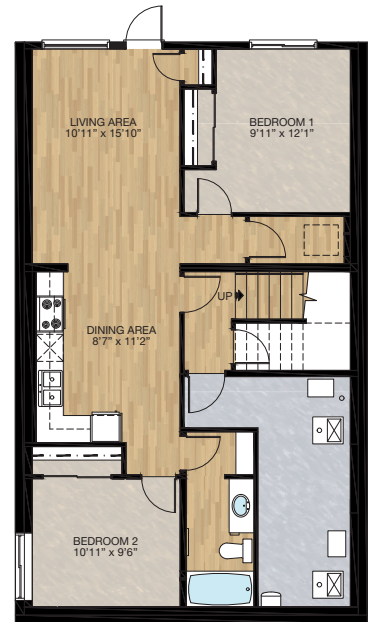
- Reduced bedroom 2 to accommodate half bath space
- Reduced flex room size to accommodate foyer closet
- Relocated foyer closet
- Added MDF capped niche
- Deleted 2'6" pocket door to bathroom in bedroom 2
- Change flush beam above foyer closet to drop beam to allow mechanical access to upper floor



## SECONDARY SUITE

### WALK-OUT OPTION

- 822 Sq.Ft. Basement development
- Included finished basement stairwell
- Add 1 riser to stairwell for 9' basement ceiling (8'9" headroom clearance)
- Change window from 60" x 24" DHS to 60" x 36" DHS at bedroom 2
- Rear windows and rear exterior entrance included with walkout basement upgrade



HARDWOOD

DECK

CARPET

CONCRETE

TILE

LVP



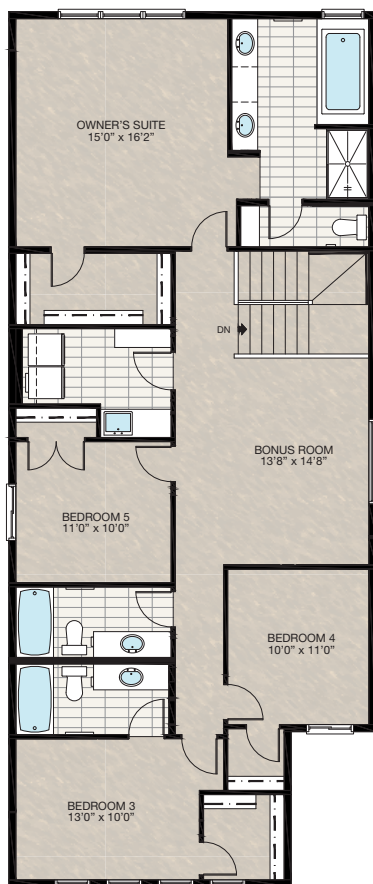
# FEATURED SPRINGHILL OPTIONS

← 34' →  
Min. Lot Width

## SELECT-10

### LAUNDRY ROOM OPTION

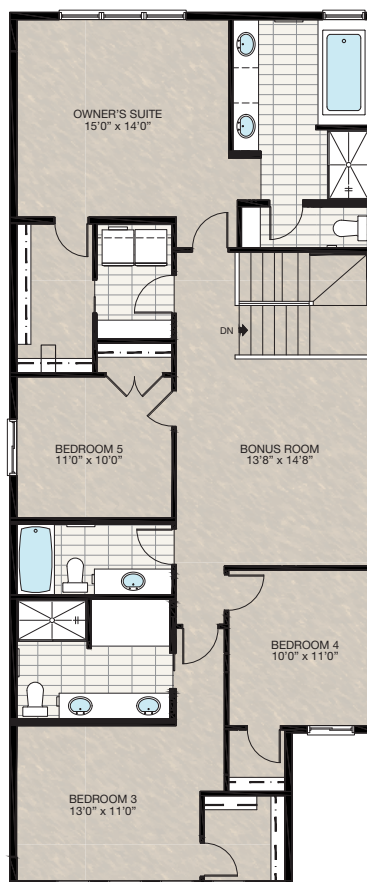
- Reduced owner's bedroom WIC wire shelving
- Deleted 3-way switch at owner's suite WIC
- Reduced laundry room linen shelving length by 16"
- Deleted 2'4" pocket door between WIC and laundry room
- Added 60" lower cabinet with sink



## SELECT-11

### SECOND ENSUITE 5 PIECE OPTION

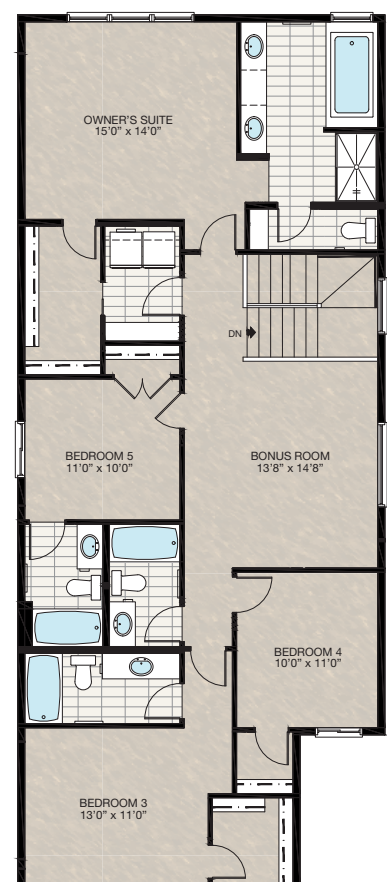
- Reduced owner's suite by 2'0"
- Redesigned owner's suite WIC & laundry area
- Deleted 3-way switch at owner's suite WIC
- Additional 1'0" to bedroom 2



## SELECT-12

### UPPER FLOOR 4 BATHROOM OPTION

- Reduced owner's suite by 2'0"
- Redesigned owner's suite WIC & laundry area
- Deleted 3-way switch at owner's suite WIC
- Additional 1'0" to bedroom 2



HARDWOOD

DECK

CARPET

CONCRETE

TILE

LVP



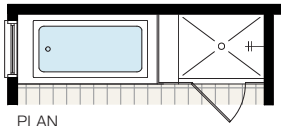
# FEATURED OPTIONS

THE  
SPRINGHILL  
2664 SQ.FT.

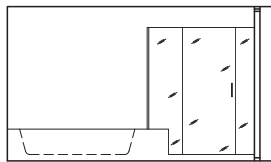


## SELECT-7 GLASS & TILE ENSUITE SHOWER

- Delete fibreglass shower tray
- Add 10mm glass, tile curb & shower base
- Extend tub tiled deck



PLAN

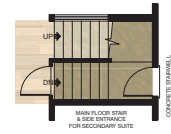
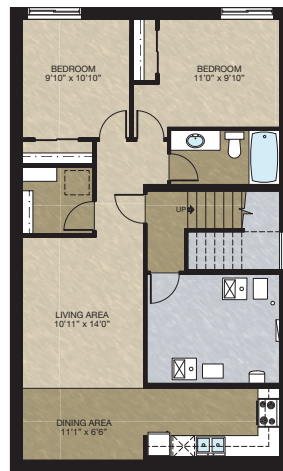


ELEVATION



## SECONDARY SUITE BASEMENT DEVELOPMENT OPTION 1

- 815 Sq.Ft. Developed area
- Includes finished basement stairwell
- Delete 2'8" door at top of stairwell
- Add one riser to stairwell for 9'0" basement ceiling (8'9" headroom clearance)
- 60" x 24" DHSL changed to 60" x 36" DHSL
- 60" x 24" HSL changed to 60" x 36" HSL



Trico Homes is a local home builder, with new single and multi-family homes for sale in Calgary, Okotoks, Chestermere, Cochrane, Airdrie and DeWinton. Offering a great selection of starter, move-up, semi-estate and ultra-estate models in numerous communities, you'll find the house that's just right for you! Look for this model and many others in Ambleton, Arbour Lake, Belmont, Carrington, Chelsea, Cornerbrook, D'Arcy, Dawson's Landing, Glacier Ridge, Hamilton Heights, Homestead, Legacy, Midtown, Pine Creek, Precedence, Rivercrest, Seton, Sirocco, Verona West Townhomes, West83 Townhomes and Wolf Willow.

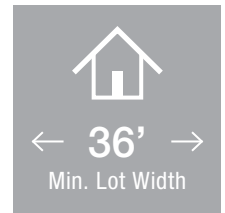



Renderings are artist's conceptions only and may vary by community and lot selection. Prices, floorplans, specifications and dimensions are approximate and are subject to change without notice. E.&O.E. © All rights reserved, including the right of reproduction in the whole or in part without the permission of Trico Homes.


Plan updated as of April 6, 2023.



tricohomes.com



 3 Bedrooms

 2½ Bathrooms

 Double Garage

# THE CAMBRIDGE 28

2443 SQ.FT.

☐ Elements Specification

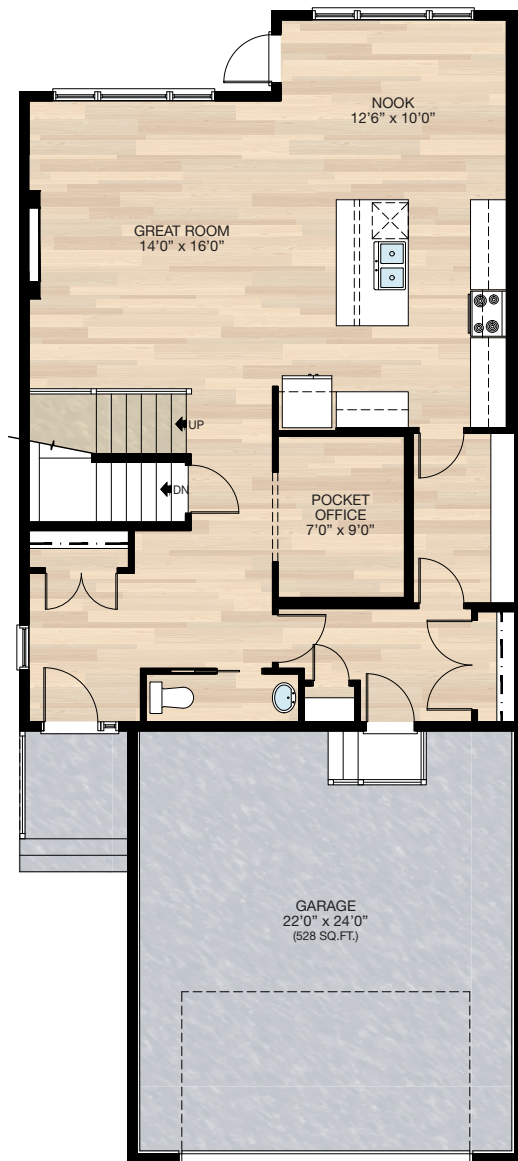
☐ Elite Specification



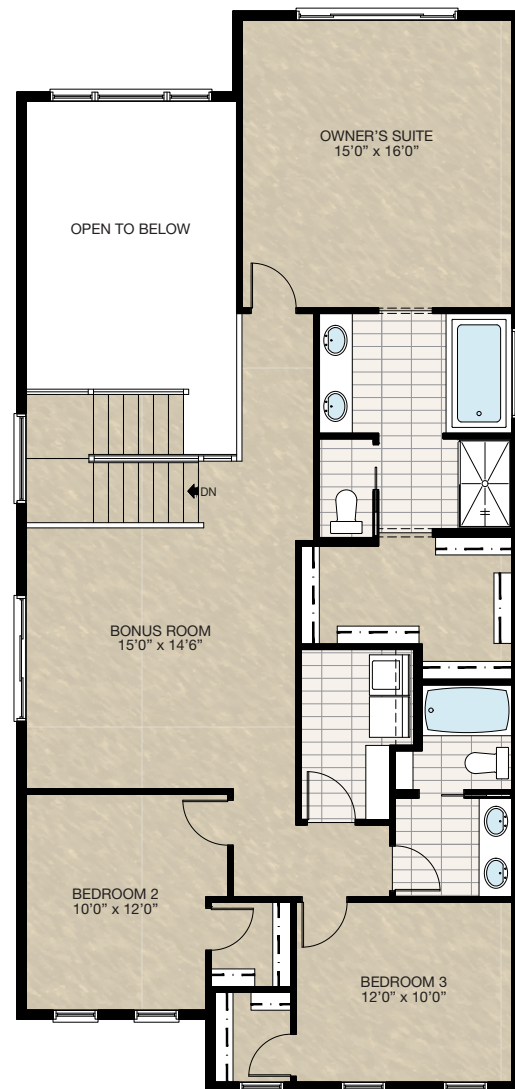
Trico Homes™  
The Heart of Homebuilding®

# STANDARD PLAN

THE  
**CAMBRIDGE 28**  
2443 SQ.FT.



**MAIN**  
1057 SQ.FT.



**UPPER**  
1386 SQ.FT.

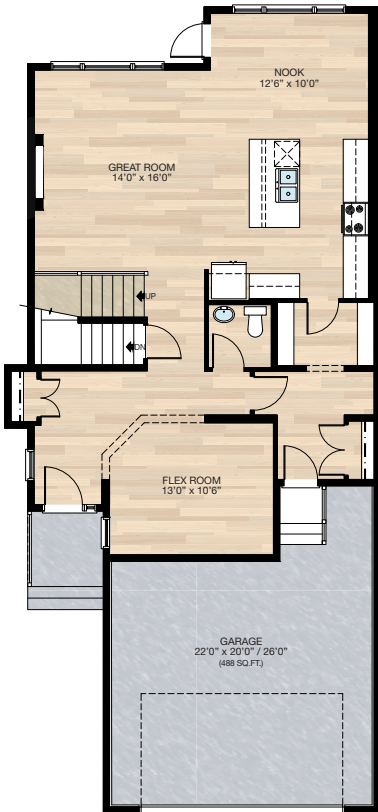


# FEATURED OPTIONS



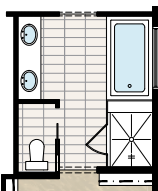
## SELECT-1 FLEX ROOM OPTION

- Add 49 sq.ft.
- Delete pocket office & add flex room
- Relocate half bath
- Cantilever front entry closet
- Add 30" x 72" VSL to flex room
- Revisions to foundation including post location



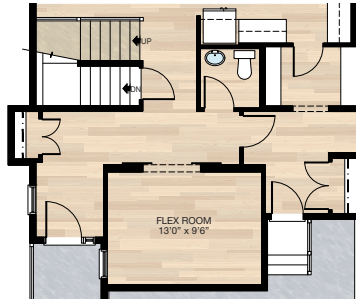
## SELECT-6 GLASS & TILE SHOWER OPTION

- Delete fibreglass shower
- Add 44" x 52" tile & 10mm glass shower
- Extend tub deck 12" for shower bench



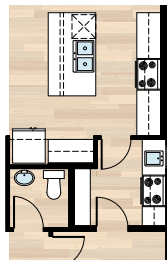
## SELECT-2 BARN DOORS TO FLEX ROOM OPTION

- Must be combined with **SELECT-1**
- Add barn doors to flex room



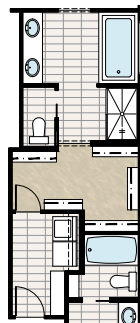
## SELECT-4 SPICE KITCHEN OPTION

- Must be combined with **SELECT-1**
- Delete one section of pantry shelves
- Delete 30" of upper & lower cabinets in kitchen
- Add spice kitchen including range, hoodfan, sink, & upper & lower cabinets
- Add 24" x 40" VSL window
- Delete 2'6" door & add 2'8" door



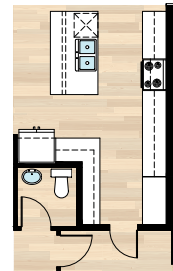
## SELECT-5 ACCESS TO LAUNDRY FROM WIC OPTION

- Delete 28" of closet shelving
- Add 2'4" door
- Add two 3-way switches



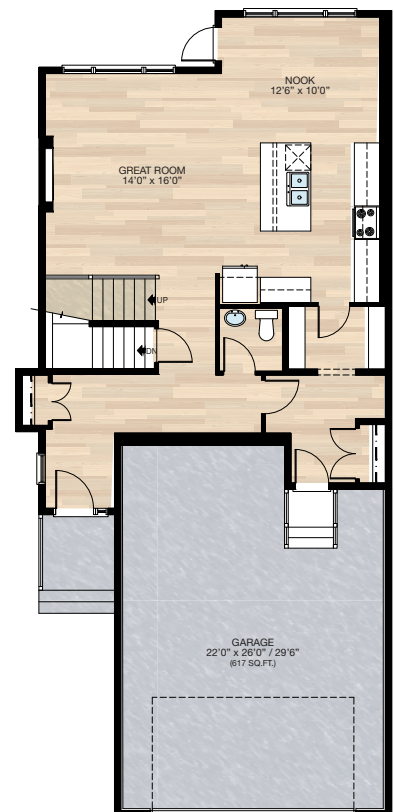
## SELECT-3 KITCHEN OPTION

- Must be combined with **SELECT-1**
- Delete pantry
- Add cabinet pantry
- Additional cabinetry
- Add two pendant lights over the island



## SELECT-7 TANDEM GARAGE OPTION

- Must be combined with **SELECT-1**
- Remove 128 sq.ft. from house
- Revisions to foundation including post location



HARDWOOD

DECK

CARPET

CONCRETE

TILE

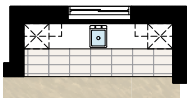
LVP

# FEATURED CAMBRIDGE 28 OPTIONS

THE  
CAMBRIDGE 28  
2443 SQ.FT.

## SELECT-11 BASEMENT WET BAR OPTION

- Includes upper & lower cabinets
- Includes dishwasher, sink & opening for bar fridge
- Flooring is changed to tile
- Two down lights & switch added

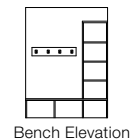
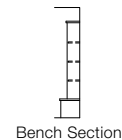


## SELECT-13 BASEMENT DEVELOPMENT OPTION

- 797 Sq.Ft. basement development
- Includes finished basement stairwell
- Delete 2'8" passage door at top of stairwell
- Add 1 riser to stairwell for 9'0" basement ceiling (8'9" headroom clearance)
- Two 60" x 24" windows change to 60" x 36" & 40" x 40"
- Side window location moved due to cantilever above
- Bathroom & furnace location changed slightly
- \*Can only be combined with **SELECT-1**

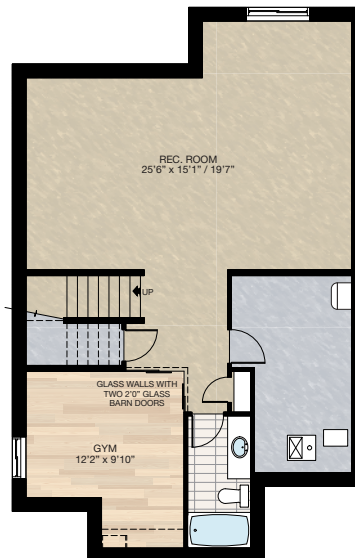
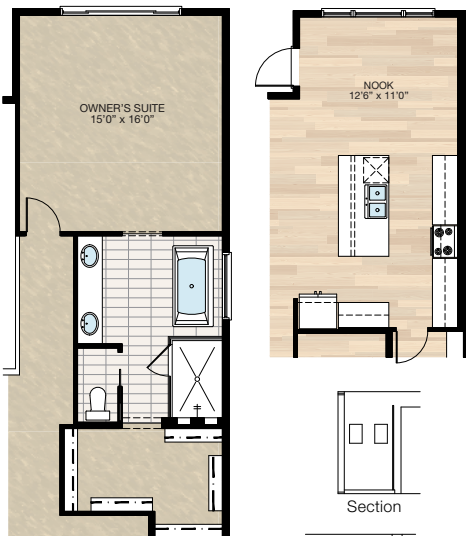
## SELECT-13A MDF BENCH & CUBBIES OPTION

\*Can only be combined with **SELECT-13**



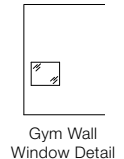
## SELECT-12 NOOK / ENSUITE OPTION

- Extend nook, upper floor & foundation 2'
- This adds 28 sq.ft. to main floor & 32 sq.ft. upper floor
- 12" is added to kitchen upper & lower cabinets as well as the island, 12" is added to the nook
- Upper floor space added to ensuite & walk-in closet
- Delete 60" x 36" soaker tub & 36" x 60" fiberglass shower
- Add 72" x 36" free standing tub & 48" x 72" 10 mm glass & tile shower with niches
- Vanity increased to 8'
- Add light over tub



## SELECT-13B PLAY SPACE OPTION

- Develop 43 sq.ft. under basement stairs
- Includes 27" x 22" interior window
- \*Can only be combined with **SELECT-13**



## SELECT-14 OWNER'S SUITE BALCONY OPTION

- Add 12'0" x 4'6" balcony off Owner's Suite
- Includes vinyl decking, aluminum railing & soffit to u/s of balcony
- Add 2'8" full french door, WP plug & exterior light with switch
- Open to below window moved up to match height of upper floor windows
- Main floor exterior light deleted & 2 down lights added



HARDWOOD

DECK

CARPET

CONCRETE

TILE

LVP

tricohomes.com

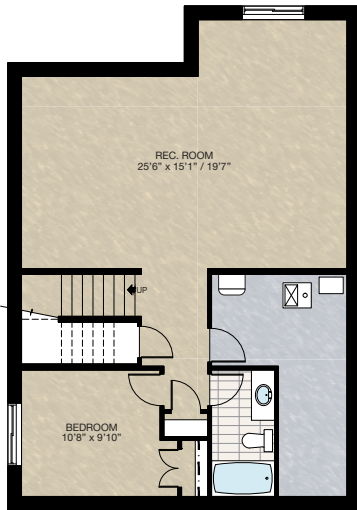


# FEATURED OPTIONS

THE  
**CAMBRIDGE 28**  
2443 SQ.FT.

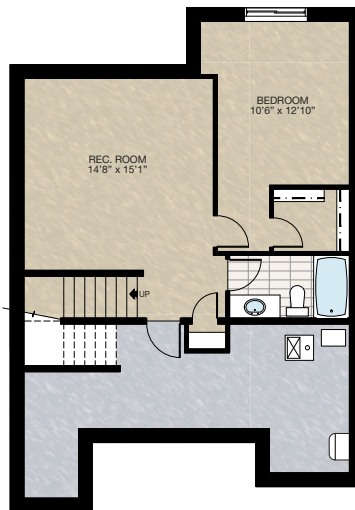
## **SELECT-8** **BASEMENT DEVELOPMENT OPTION 1**

- 752 Sq.Ft. basement development
- Includes finished basement stairwell
- Delete 2'8" passage door at top of stairwell
- Add one riser to stairwell for 9'0" basement ceiling (8'9" headroom clearance)
- Two 60" x 24" windows change to two 60" x 36"
- Cannot be combined with any main floor options



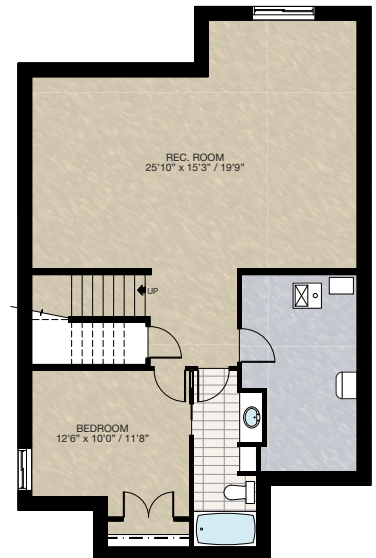
## **SELECT-9** **BASEMENT DEVELOPMENT OPTION 2**

- 559 Sq.Ft. basement development
- Includes finished basement stairwell
- Delete 2'8" passage door at top of stairwell
- Add one riser to stairwell for 9'0" basement ceiling (8'9" headroom clearance)
- Delete one 60" x 24" window
- Change one 60" x 24" window to 60" x 36"
- Can only be combined with **SELECT-7**



## **SELECT-10** **BASEMENT DEVELOPMENT OPTION 3**

- 797 Sq.Ft. basement development
- Includes finished basement stairwell
- Delete 2'8" passage door at top of stairwell
- Add one riser to stairwell for 9'0" basement ceiling (8'9" headroom clearance)
- Two 60" x 24" windows change to 60" x 36" & 40" x 40"
- Can only be combined with **SELECT-1**



Trico Homes is a local home builder, with new single and multi-family homes for sale in Calgary, Okotoks, Chestermere, Cochrane, Airdrie and DeWinton. Offering a great selection of starter, move-up, semi-estate and ultra-estate models in numerous communities, you'll find the house that's just right for you! Look for this model and many others in Ambleton, Arbour Lake, Belmont, Carrington, Chelsea, Cornerbrook, D'Arcy, Dawson's Landing, Glacier Ridge, Hamilton Heights, Homestead, Legacy, Midtown, Pine Creek, Precedence, Rivercrest, Seton, Sirocco, Verona West Townhomes, West83 Townhomes and Wolf Willow.

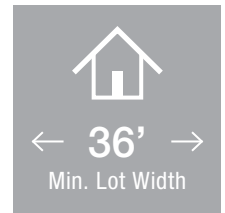



Renderings are artist's conceptions only and may vary by community and lot selection. Prices, floorplans, specifications and dimensions are approximate and are subject to change without notice. E.&O.E. © All rights reserved, including the right if reproduction in the whole or in part without the permission of Trico Homes.


Plan updated as of October 04, 2024.



[tricohomes.com](https://tricohomes.com)



 3 Bedrooms

 2½ Bathrooms

 Double Garage

# THE STANLEY

2671 SQ.FT.

☐ Elements Specification

☐ Elite Specification

---

---

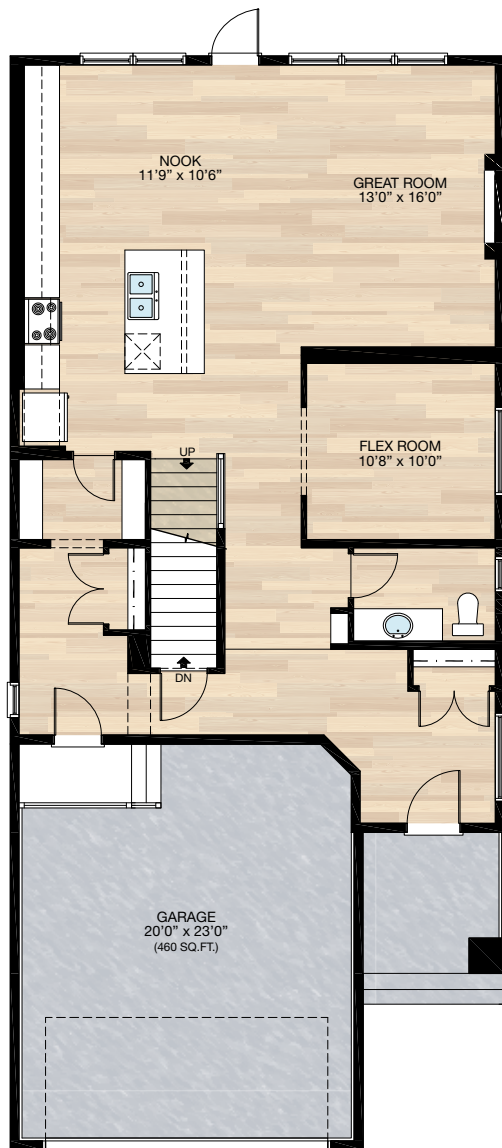
---



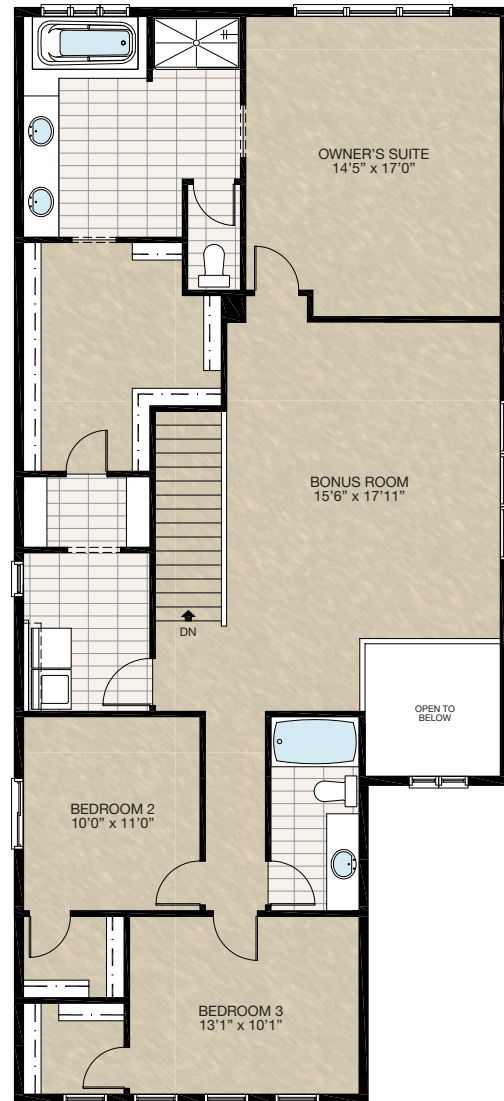
Trico Homes™  
The Heart of Homebuilding®

# STANDARD PLAN

THE  
**STANLEY**  
2671 SQ.FT.



**MAIN**  
1137 SQ.FT.



**UPPER**  
1534 SQ.FT.

HARDWOOD

DECK

CARPET

CONCRETE

TILE

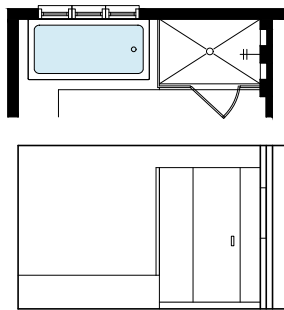
LVP

# FEATURED OPTIONS

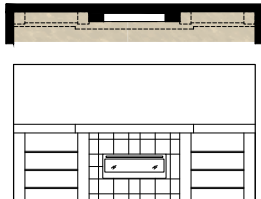
← 36' →  
Min. Lot Width

## SELECT-1 ENSUITE OPTION

- Delete 60" x 36" acrylic shower base w/tiled walls & 6mm glass
- Add tiled shower w/2 niches & 10mm glass shower



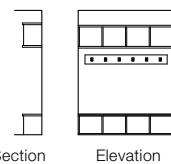
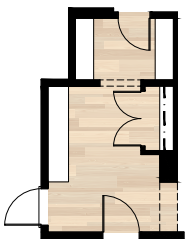
## SELECT-4 FIREPLACE OPTION



## SELECT-5 MUDROOM OPTION

\*NOTE: Minimum 38' wide lot required for this option

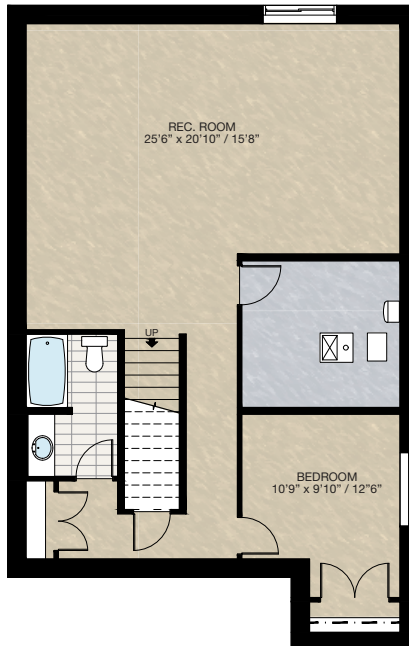
- Extend mudroom 2'0" x 11'8" including foundation below
- Additional 23 sq.ft. to main floor
- Add built-in lockers
- Delete 24" x 48" VSL window in mudroom
- Add 2'8" exterior door (B slab w/ 20" x 20" clear glass insert) C/W cam locks
- Add exterior light and switch
- Upgrade mudroom light circuit to 4 way switches
- Cannot be combined with **SELECT-2** option



MUDROOM LOCKER BUILT-IN DETAILS

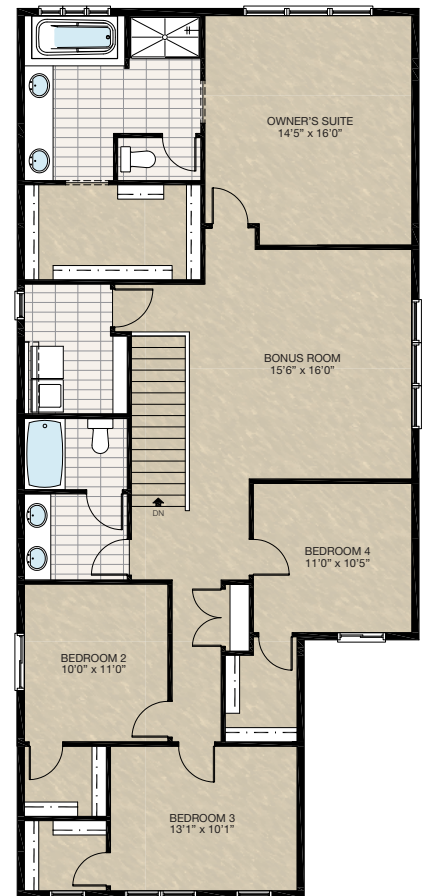
## SELECT-2 BASEMENT DEVELOPMENT OPTION

- 883 Sq. Ft. Developed area
- Included finished basement stairwell
- Delete 2'-8" door top of stairwell
- Add 1 riser to stairwell for 9'-0" basement ceiling (8'-9" headroom clearance)
- 60" x 24" windows changed to 60" x 36"



## SELECT-3 4 BEDROOM UPPER FLOOR OPTION

- Additional 58 sq.ft. to upper floor



HARDWOOD

DECK

CARPET

CONCRETE

TILE

LVP



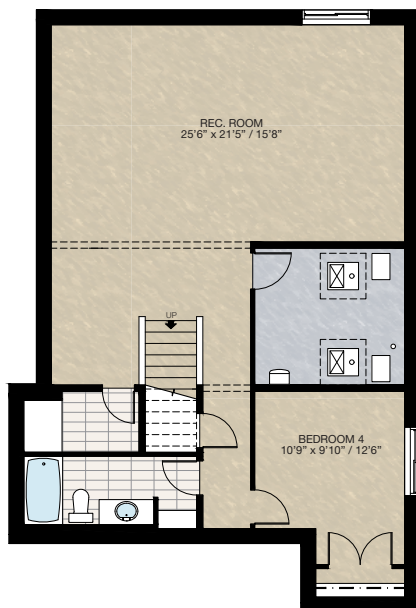
# FEATURED OPTIONS

THE  
**STANLEY**  
2671 SQ.FT.

## SELECT-6

### BASEMENT DEVELOPMENT OPTION 2

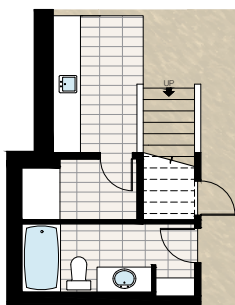
- \*NOTE: Minimum 38' wide lot required for this option. Must combine with **SELECT-5** option
- 913 Sq.Ft. developed area
  - Included finished basement stairwell
  - Delete 2'8" door top of stairwell
  - Add 1 riser to stairwell for 9'0" ceiling (8'9" headroom clearance)
  - 60" x 24" windows changed to 60" x 36"



## SELECT-6A

### WET BAR OPTION

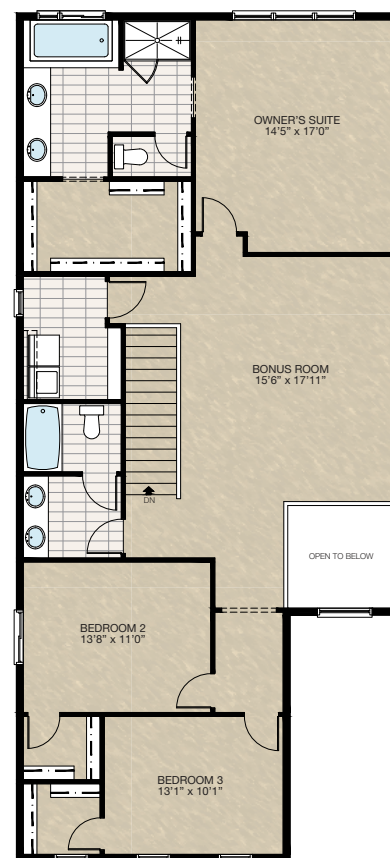
- \*MUST combine with **SELECT-6** Basement Development option
- Add 10'0" wet bar with lower cabinetry only & bar sink
  - Add light outlet & switch
  - Add 2' x 4' full height plumbing wall



## SELECT-7

### ALTERNATIVE UPPER FLOOR OPTION

- Relocate main bath
- Add 2nd sink & light outlet with larger vanity to main bath
- Add second 2'6" door to main bath
- Larger secondary bedrooms
- Reduced owner's suite walk-in closet
- Reconfigure ensuite water closet
- Add one extra light outlet to hallway



Trico Homes is a local home builder, with new single and multi-family homes for sale in Calgary, Okotoks, Chestermere, Cochrane, Airdrie and DeWinton. Offering a great selection of starter, move-up, semi-estate and ultra-estate models in numerous communities, you'll find the house that's just right for you! Look for this model and many others in Ambleton, Arbour Lake, Belmont, Carrington, Chelsea, Cornerbrook, D'Arcy, Dawson's Landing, Glacier Ridge, Hamilton Heights, Homestead, Legacy, Midtown, Pine Creek, Precedence, Rivercrest, Seton, Sirocco, Verona West Townhomes, West83 Townhomes and Wolf Willow.



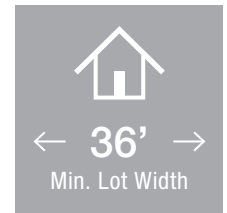
Renderings are artist's conceptions only and may vary by community and lot selection. Prices, floorplans, specifications and dimensions are approximate and are subject to change without notice. E.&O.E. © All rights reserved, including the right if reproduction in the whole or in part without the permission of Trico Homes.


Plan updated as of October 04, 2024.




tricohomes.com





 3 Bedrooms

 2½ Bathrooms

 Double Garage

# THE WESTWOOD

2025 SQ.FT.

☐ Elements Specification

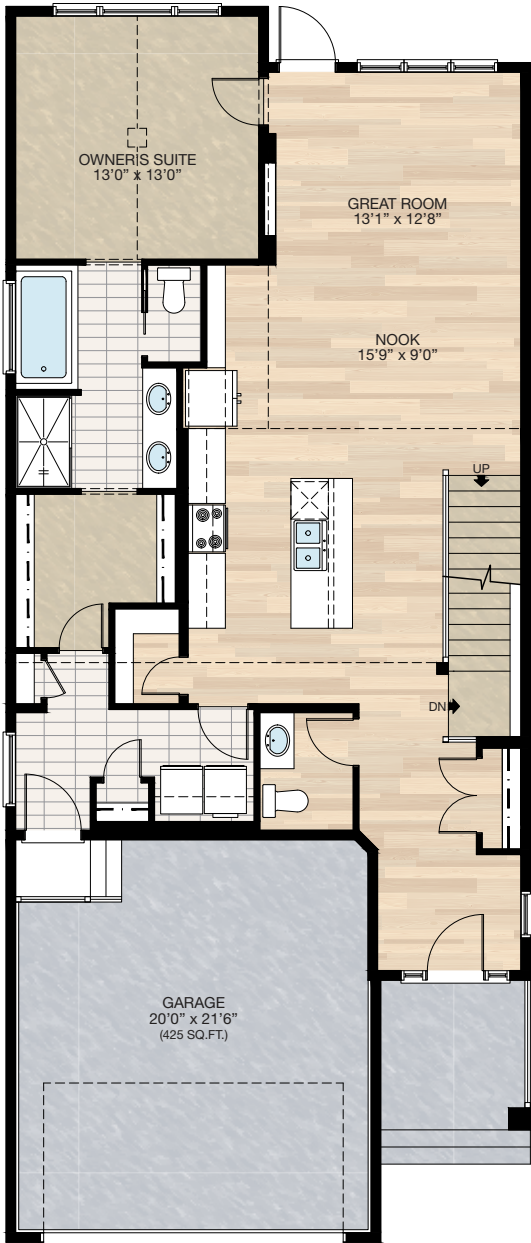
☐ Elite Specification



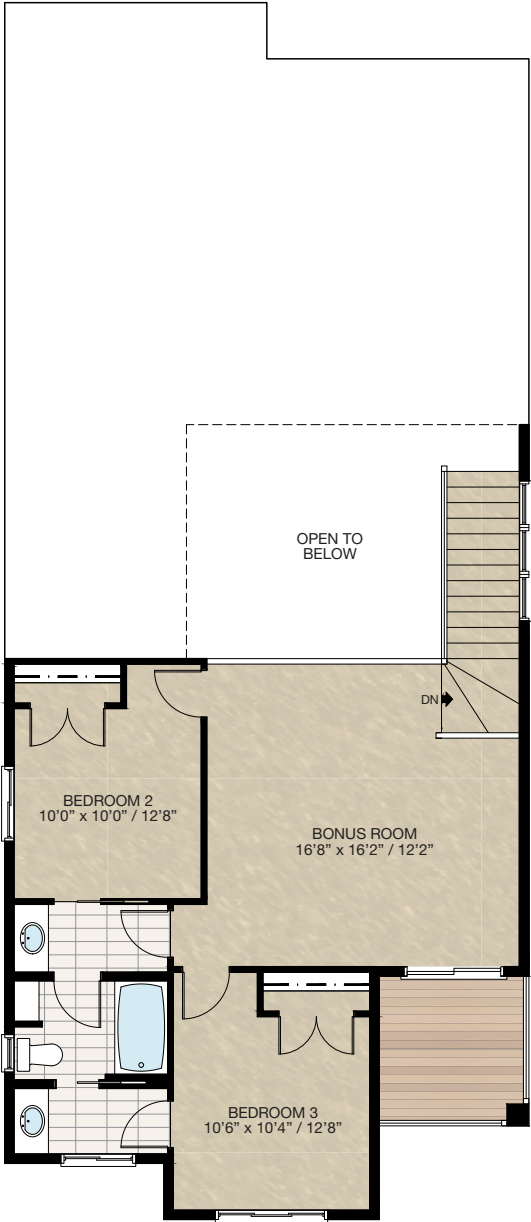
Trico Homes™  
The Heart of Homebuilding®

# STANDARD PLAN

THE  
WESTWOOD  
2025 SQ.FT.



**MAIN**  
1269 SQ.FT.



**UPPER**  
756 SQ.FT.

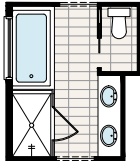


# FEATURED OPTIONS



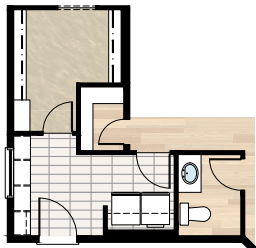
## SELECT-1 ENSUITE OPTION

- \*CANNOT be combined with **SELECT-3 or 4** option
- Delete standard 36" x 60" acrylic shower base w/ tiled walls & 6mm glass
- Add 40" x 60" tiled shower with 10mm glass
- Extend tub tiled ledge by 3.5" next to shower
- Relocate towel bar to opposite side of tub



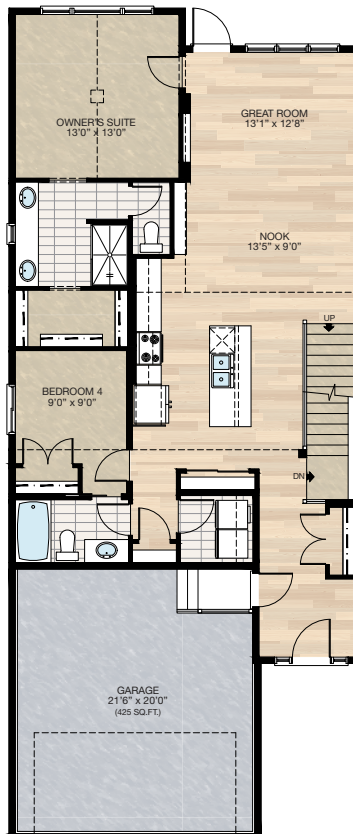
## SELECT-2 MUDROOM LOCKERS OPTION

- \*CANNOT be combined with **SELECT-3 or 4** option
- Delete coat closet & linen closet at mudroom
- Add 8'0" MDF lockers & coat hooks with MDF backing
- Replace 30" of closet shelving in master walk-in closet with four 30" wide & 16" deep wire shelving for linen
- Delete one light outlet in mudroom
- Recenter mudroom window between shelves & wall
- Garage entrance door moved 1'4" towards W/D



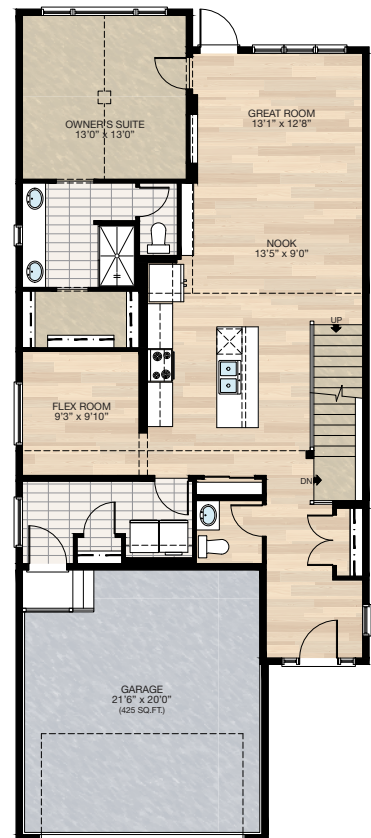
## SELECT-3 MAIN FLOOR TWO BEDROOMS OPTION

- Delete 72" x 36" soaker tub at ensuite
- Delete 60" x 48" P frosted window at ensuite
- Add 20" x 48" P frosted window at ensuite between two sinks
- Vanity mirror to be two 24" x 42" centered over each sink
- Additional 22" of vanity at ensuite
- Change water closet door from pocket to swing door
- Reduced owner's walk-in closet
- Add second bedroom with closet
- Add 3-piece main bath including a 2'6" pocket door access from bedroom 2
- Upgrade single switch to 3-way switch in main bath
- Add 48" x 40" HSL to bedroom 2
- Delete half bath
- Delete 8" cabinetry at kitchen
- Delete walk-in pantry
- Add pantry closet
- Upgrade kitchen 3-way switch to 4-way switch
- Delete mudroom & 48" x 18" P window & relocate garage entrance
- Change garage entrance door from 3'0" to 2'8"



## SELECT-4 FLEX ROOM OPTION

- Delete 72" x 36" soaker tub at ensuite
- Delete 60" x 48" P frosted window at ensuite
- Add 20" x 48" P frosted window at ensuite between two sinks
- Vanity mirror to be two 24" x 42" centered over each sink
- Additional 22" of vanity at ensuite
- Water closet door changed from pocket door to swing door
- Reduced owner's walk-in closet
- Add 60" x 18" P window to flex room
- Delete 11" cabinetry at kitchen
- Delete walk-in pantry
- Add pantry closet
- Upgrade kitchen 3-way switch to 4-way switch
- Delete linen closet in mudroom
- Increase width to coat closet in mudroom



HARDWOOD

DECK

CARPET

CONCRETE

TILE

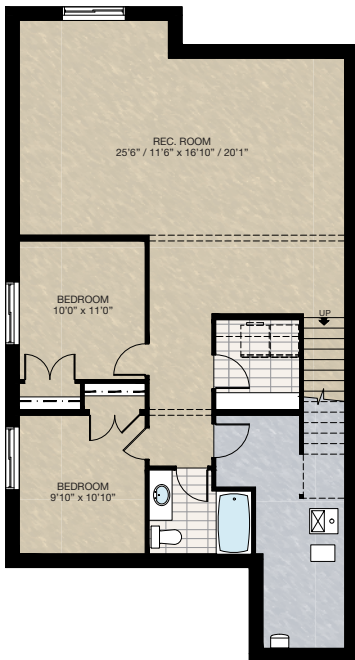
LVP

# FEATURED WESTWOOD OPTIONS



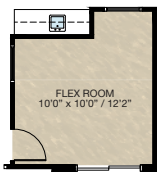
## **SELECT-7** BASEMENT DEVELOPMENT OPTION 2

- 976 Sq.Ft. developed area
- Add laundry room with washer & dryer rough-in
- Add 1 riser to finished stairwell for 9'0" basement ceiling (8'9" headroom clearance)
- All three basement windows upgraded from 24" high to 36" high



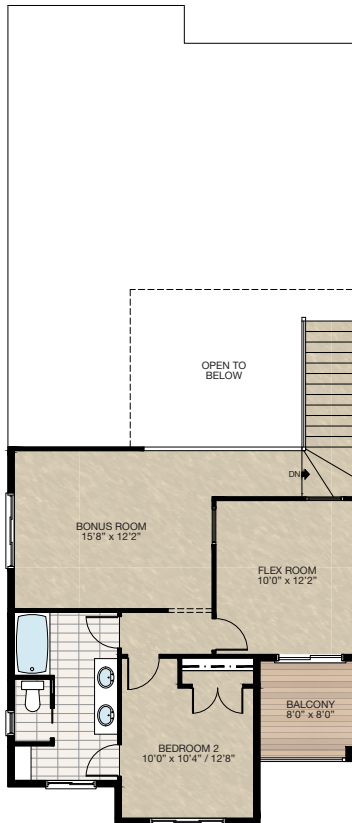
## **SELECT-8A** WET BAR OPTION

- \*Must combined with **SELECT-8** option
- Reduced flex room
- Add 72" wet bar with upper cabinet & sink



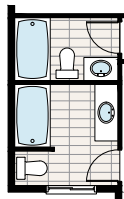
## **SELECT-8** UPPER FLOOR FLEX ROOM OPTION

- Add two 36" x 36" glass inserts to flex room
- Reduced 13.5" of vanity at bathroom
- Delete 48" x 40" HSL window
- Add 72" x 20" HSL window to bonus room



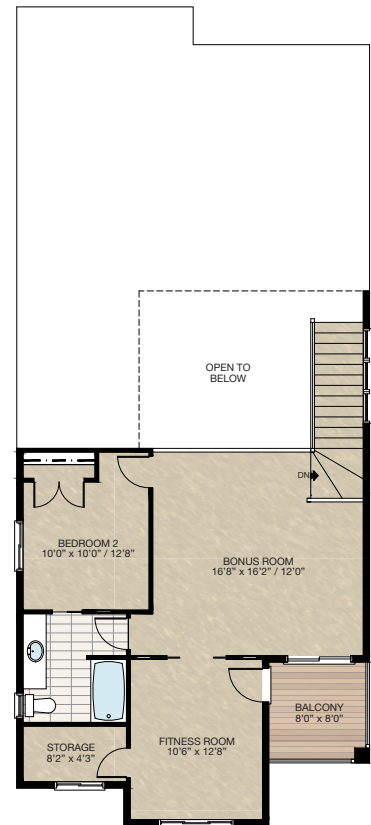
## **SELECT-9** UPPER FLOOR TWO BATHROOMS OPTION

- Delete 24" x 36" VSL frosted window
- Delete four 16" wire shelves



## **SELECT-10** UPPER FLOOR FITNESS ROOM OPTION

- Reduced 14" vanity at bathroom
- Add storage room
- Add two 2'4" French pocket doors to fitness room
- Add 2'8" French exterior door
- Add 4-way switch to exterior light at deck



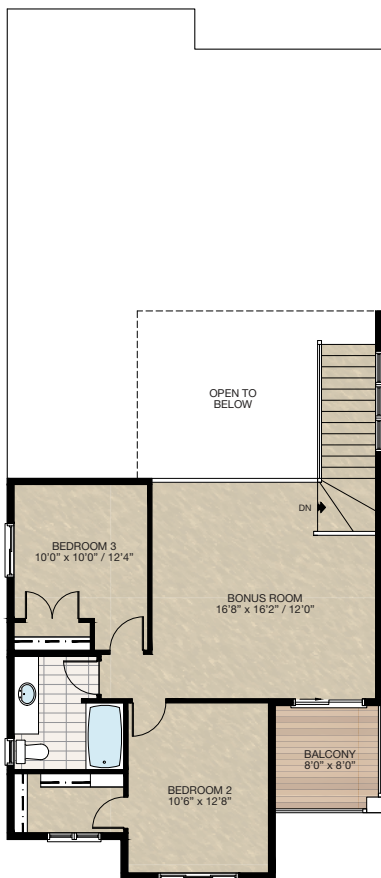
# FEATURED WESTWOOD OPTIONS

THE  
**WESTWOOD**  
2025 SQ.FT.



## SELECT-11 UPPER FLOOR OPTION

- Reduced 14" vanity bathroom
- Add walk-in closet to bedroom 2





# FEATURED OPTIONS

THE  
**WESTWOOD**  
2025 SQ.FT.

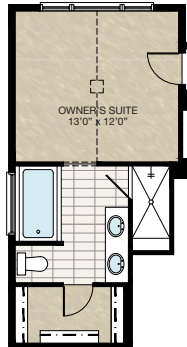
## **SELECT-4A MUDROOM LOCKER OPTION**

- \*MUST combine with **SELECT-4 Flex Room** option
- Reduce width of coat closet in mudroom
- Delete 48" x 18" P window in mudroom
- Add 36" x 18" P window to mudroom
- Add 6'6" MDF locker & coat hooks with MDF backing
- Extend wood landing at garage entry by 12"
- Change garage entrance door from 3'0" to 2'8"



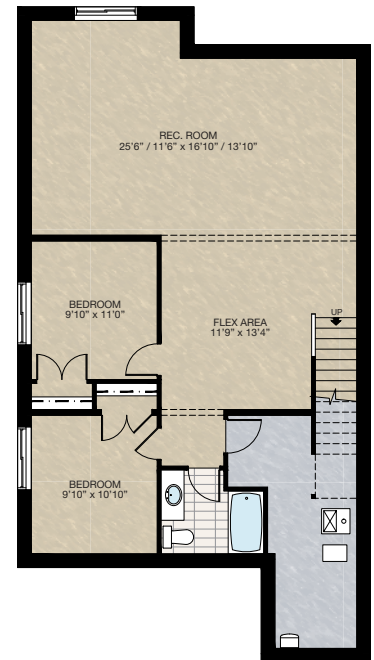
## **SELECT-5 ENSUITE OPTION 2**

- \*MUST combine with **SELECT-3 or 4** option
- Add 72" x 36" soaker tub with 4" tiled deck
- Delete 27.5" length of vanity
- Delete 20" x 48" P frosted window
- Add 60" x 36" P frosted window
- Reduced owner's suite length by 12"
- Delete 36" x 60" acrylic shower base w/tiled walls & 6mm glass
- Add 36" x 81" tiled shower with 10mm glass door & 12" tiled bench



## **SELECT-6 BASEMENT DEVELOPMENT OPTION 1**

- 976 Sq.Ft. developed area
- Add 1 riser to finished stairwell for 9'0" basement ceiling (8'9" headroom clearance)
- All three basement windows upgraded from 24" high to 36" high
- 42" Stubwall added to stairs



Trico Homes is a local home builder, with new single and multi-family homes for sale in Calgary, Okotoks, Chestermere, Cochrane, Airdrie and DeWinton. Offering a great selection of starter, move-up, semi-estate and ultra-estate models in numerous communities, you'll find the house that's just right for you! Look for this model and many others in Ambleton, Arbour Lake, Belmont, Carrington, Chelsea, Cornerbrook, D'Arcy, Dawson's Landing, Glacier Ridge, Hamilton Heights, Homestead, Legacy, Midtown, Pine Creek, Precedence, Rivercrest, Seton, Sirocco, Verona West Townhomes, West83 Townhomes and Wolf Willow.

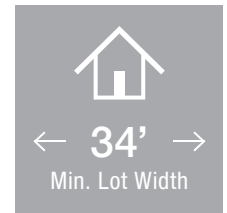



Renderings are artist's conceptions only and may vary by community and lot selection. Prices, floorplans, specifications and dimensions are approximate and are subject to change without notice. E.&O.E. © All rights reserved, including the right of reproduction in the whole or in part without the permission of Trico Homes.


Plan updated as of **October 04, 2024**.



[tricohomes.com](https://tricohomes.com)



 3 Bedrooms

 2½ Bathrooms

 Double Garage

# THE ROSEWOOD

2472 SQ.FT.

☐ Elements Specification

☐ Elite Specification



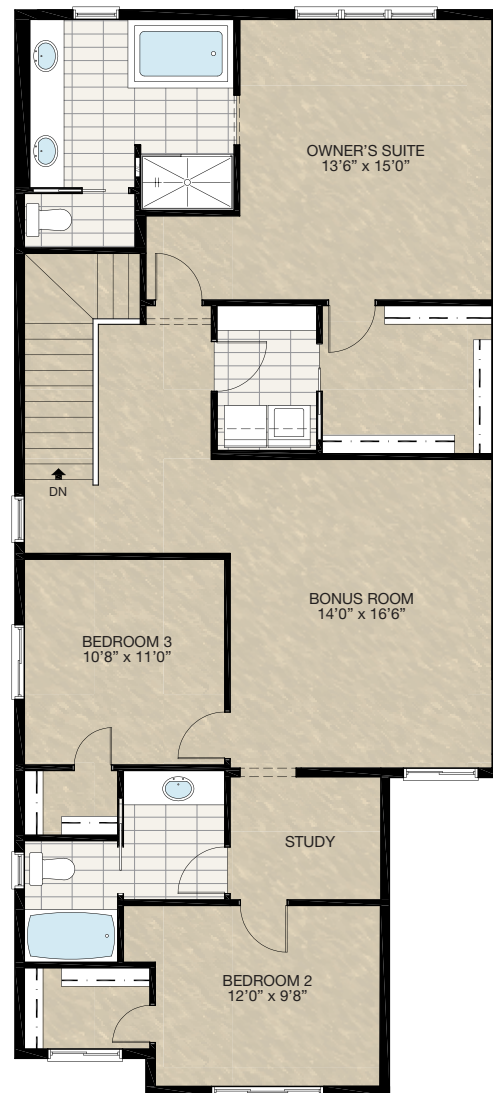
Trico Homes™  
The Heart of Homebuilding®

# STANDARD PLAN

THE  
**ROSEWOOD**  
2472 SQ.FT.



**MAIN**  
1080 SQ.FT.



**UPPER**  
1392 SQ.FT.



# FEATURED OPTIONS

← 34' →  
Min. Lot Width

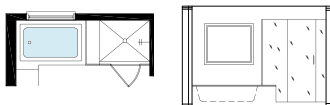
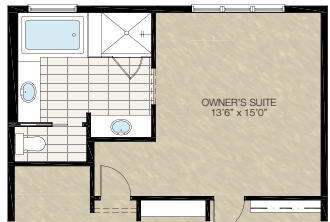
## SELECT-1 DINING ROOM WITH BUTLER'S PANTRY OPTION

- Delete pantry & add upper & lower cabinets
- Delete upper & lower cabinets beside the fridge & replace with full-height cabinet pantry
- Delete mudroom closet & add lockers
- Open up wall between hallway & dining room with a DBH
- Extend beam & move post to wall beside half bath. This will alter the beam & post locations below as well



## SELECT-4 ENSUITE OPTION

- Delete fiberglass shower & add tile & 10mm glass shower
- Separate vanity into two 5' vanities
- Change window size to 48" x 40"



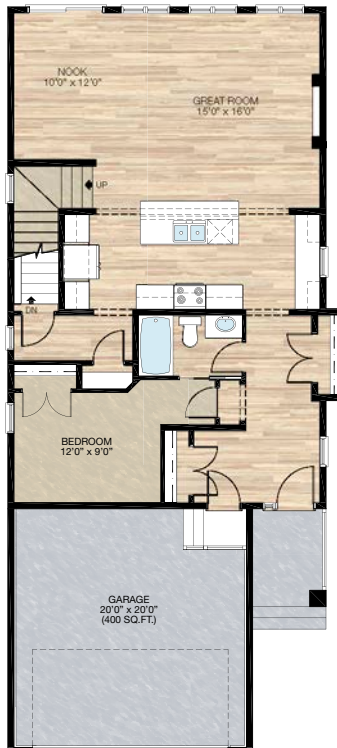
## SELECT-2 JACK & JILL BATHROOM OPTION

- Add a second door & 3-way switch
- Extend vanity & add a second sink



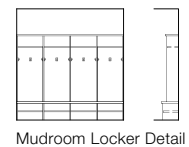
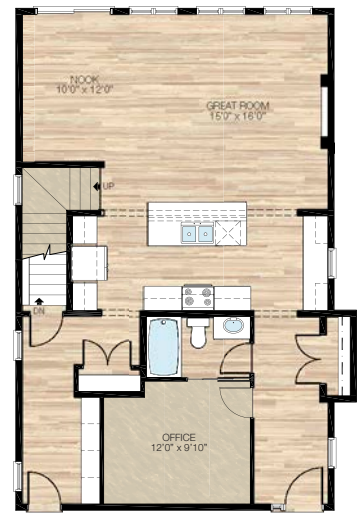
## SELECT-5 MAIN FLOOR BEDROOM OPTION

- Flex room becomes bedroom & mudroom is deleted
- Reduce window width from 30" x 72" to 24" x 72"
- Add a tub/shower to half bath & a 2'6" pocket door
- Move mudroom closet to front entry



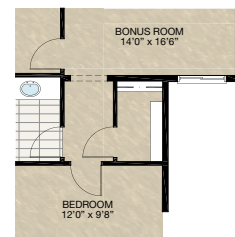
## SELECT-3 MAIN FLOOR OFFICE OPTION

- Flex room becomes office
- Add a tub/shower to half bath & a 2'6" pocket door
- Delete mudroom closet & install lockers
- Pantry is reduced



## SELECT-6 STORAGE ROOM OPTION

- Convert study into storage room



HARDWOOD

DECK

CARPET

CONCRETE

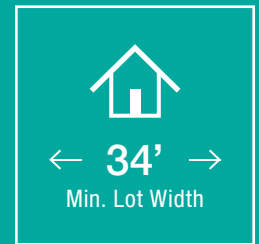
TILE

LVP

tricohomes.com



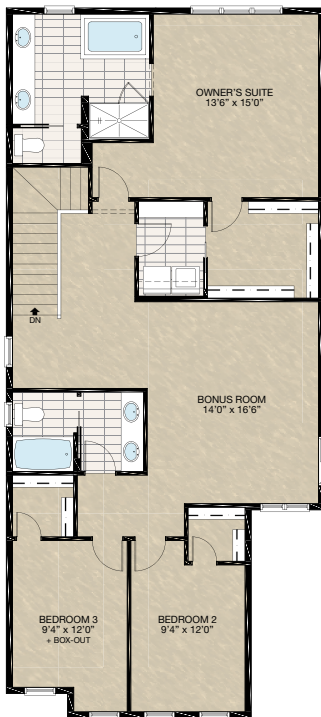
# FEATURED ROSEWOOD OPTIONS



## SELECT-10 ALTERNATIVE UPPER FLOOR OPTION

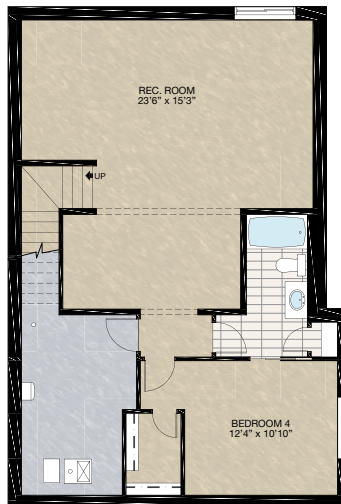
- Relocate Bedroom 3
- Relocate main bath
- Add 2<sup>nd</sup> sink & light outlet to main bath with larger vanity

\*NOTE: Some elevation may required modification to front windows for this option



## SELECT-11 BASEMENT DEVELOPMENT OPTION 2

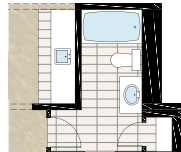
- 814 Sq.Ft. basement development
  - Included finished basement stairwell
  - Move 2'8" passage door from top of stairwell to mechanical room
  - Add 1 riser to stairwell for 9'0" basement ceiling (8'9" headroom clearance)
  - Windows changed from 60" x 24" to 60" x 36"
- \*NOTE: This basement development only for elevations with extended front entry



## SELECT-11A WET BAR OPTION

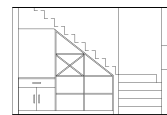
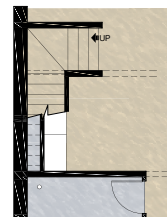
- Add 7'9" wet bar with bar sink & lower cabinetry only
- 1 Row of tile in front of wet bar

\*NOTE: Must combined with **SELECT-11** Basement Development Option



## SELECT-11B UNDERSTAIR DEVELOPMENT OPTION

- Additional 16 sq.ft. of basement development
- Add 36" wide & 24" deep lower cabinetry with counter
- Add puck light & switch & one electrical outlet to counter
- Add built-in open shelving
- Add wall to both sides of built-in to enclosed the developed area

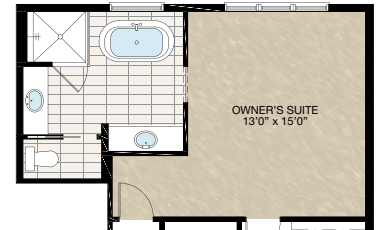


UNDERSIDE STAIR BUILT-IN DETAIL

This is only general layout of built-in. Please refer to cabinetry supplier layout for materials & exact dimension.

## SELECT-12 ALTERNATE ENSUITE OPTION

- Extend bathroom 6" into bedroom
- Delete acrylic shower base + 6mm sliding glass door & add shower w/tile + 10mm glass
- Delete tub + tub deck & add freestanding tub
- Separate vanity into two 5'0" / 5'6" vanities
- Change window size to 48"x 40"

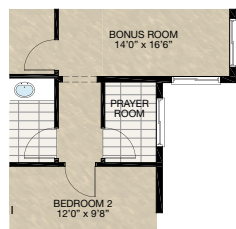


# FEATURED OPTIONS

THE  
**ROSEWOOD**  
2472 SQ.FT.

## **SELECT-7** PRAYER ROOM OPTION

- Convert study into prayer room
- Tile flooring
- Add window



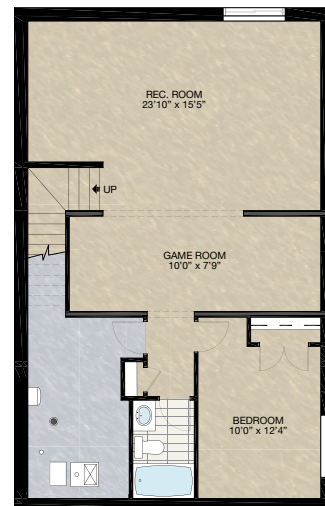
## **SELECT-8** FOUR BEDROOM OPTION

- Delete bonus room
- Add forth bedroom with full ensuite & walk-in closet
- Delete one 48" x 32" window



## **SELECT-9** BASEMENT DEVELOPMENT OPTION

- 791 Sq.Ft. of developed area
- Includes finished basement stairwell
- Move 2'8" passage door from top of stairwell to mech. room
- Add one riser to stairwell for 9' basement ceiling (8'9" headroom clearance)
- 60" x 24" Windows changed to 60" x 36"
- \* Please note for "C" elevations bedroom will be 2'0" wider & total developed area will be 825 sq.ft.



Trico Homes is a local home builder, with new single and multi-family homes for sale in Calgary, Okotoks, Chestermere, Cochrane, Airdrie and DeWinton. Offering a great selection of starter, move-up, semi-estate and ultra-estate models in numerous communities, you'll find the house that's just right for you! Look for this model and many others in Ambleton, Arbour Lake, Belmont, Carrington, Chelsea, Cornerbrook, D'Arcy, Dawson's Landing, Glacier Ridge, Hamilton Heights, Homestead, Legacy, Midtown, Pine Creek, Precedence, Rivercrest, Seton, Sirocco, Verona West Townhomes, West83 Townhomes and Wolf Willow.



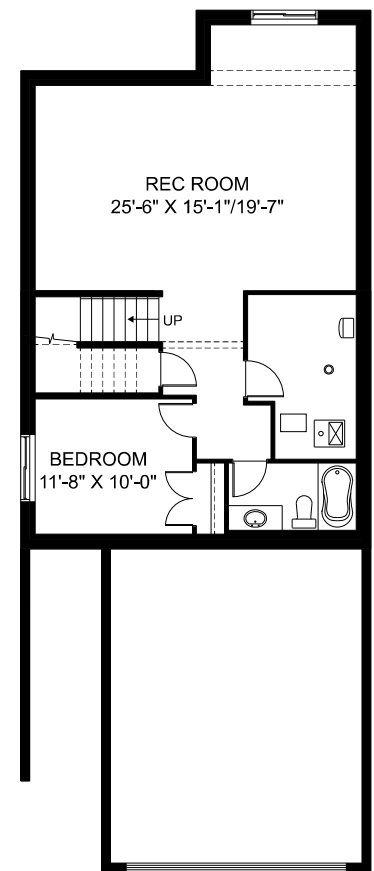
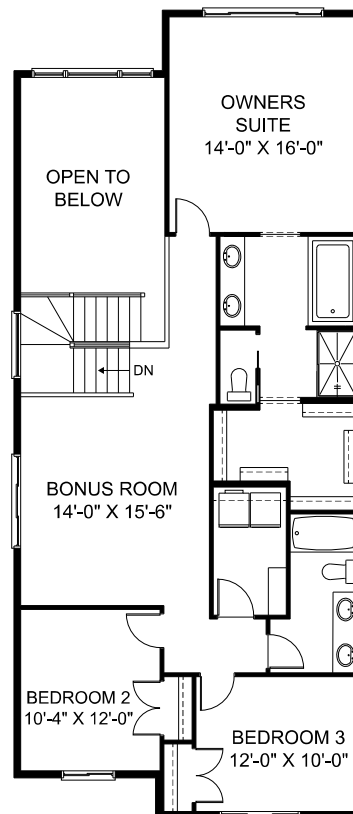
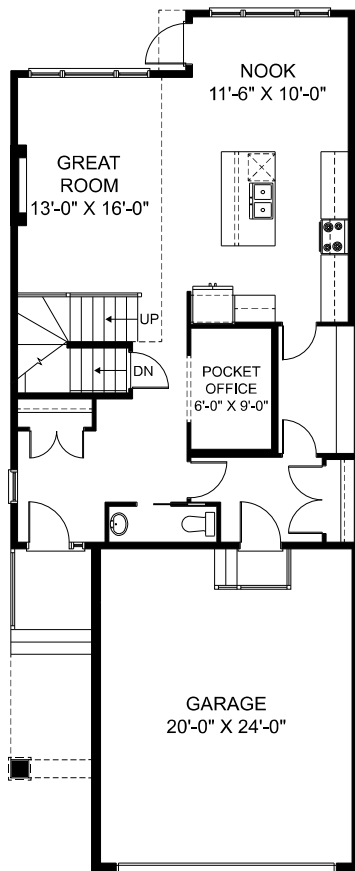
Renderings are artist's conceptions only and may vary by community and lot selection. Prices, floorplans, specifications and dimensions are approximate and are subject to change without notice. E.&O.E. © All rights reserved, including the right if reproduction in the whole or in part without the permission of Trico Homes.

Plan updated as of October 04, 2024.



tricohomes.com

## Cambridge 26



\*Optional Select 7  
Basement Development Shown  
732 Sq. Ft.

Floor Plan



In the continuing effort to improve our homes, builder reserves the right to modify the interior and exterior design, specifications, locations, sizes, design features and prices of the homes. Modifications may vary by home and are subject to change without notice. All dimensions and square footages are approximate and can vary in production. No representations of any type are made by this floor plan. Colors shown are approximate representations of actual materials and are not intended to be an exact color match. Please consult our sales representative for details.

[tricohomes.com](http://tricohomes.com)

## Cambridge 26



## Exteriors

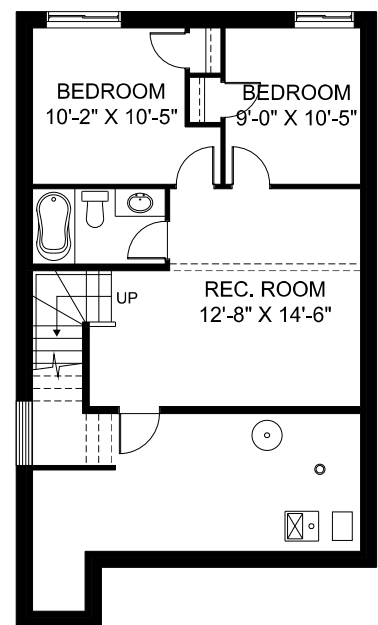
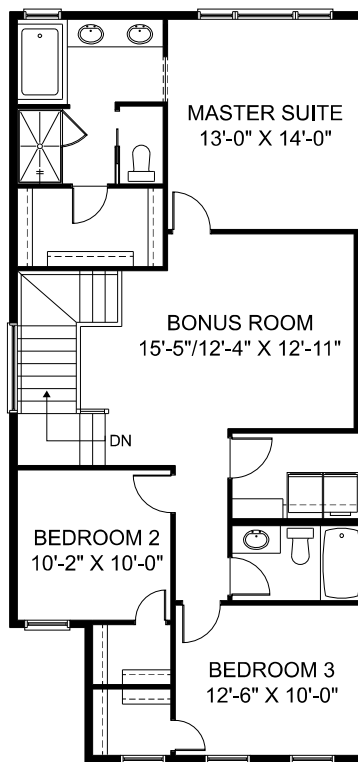
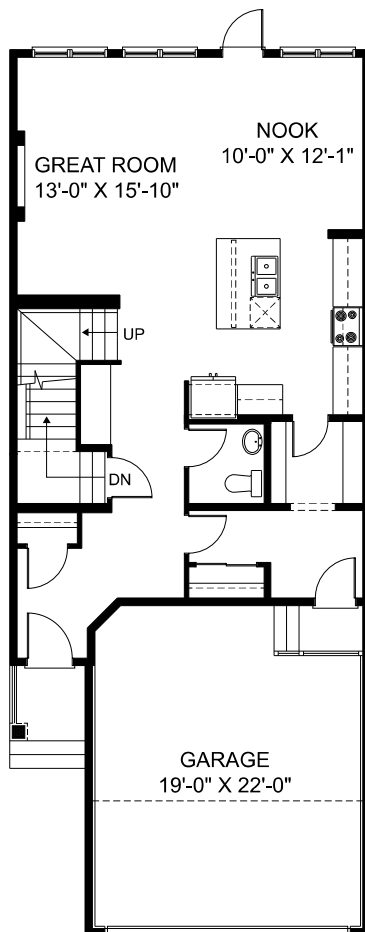


In the continuing effort to improve our homes, builder reserves the right to modify the interior and exterior design, specifications, locations, sizes, design features and prices of the homes. Modifications may vary by home and are subject to change without notice. All dimensions and square footages are approximate and can vary in production. No representations of any type are made by this floor plan. Colors shown are approximate representations of actual materials and are not intended to be an exact color match. Please consult our sales representative for details.

[tricohomes.com](http://tricohomes.com)



# Oxford II



\*Optional Select 10  
Basement Development Shown  
549 Sq. Ft.

## Floor Plan



In the continuing effort to improve our homes, builder reserves the right to modify the interior and exterior design, specifications, locations, sizes, design features and prices of the homes. Modifications may vary by home and are subject to change without notice. All dimensions and square footages are approximate and can vary in production. No representations of any type are made by this floor plan. Colors shown are approximate representations of actual materials and are not intended to be an exact color match. Please consult our sales representative for details.

[tricohomes.com](http://tricohomes.com)

## Oxford II



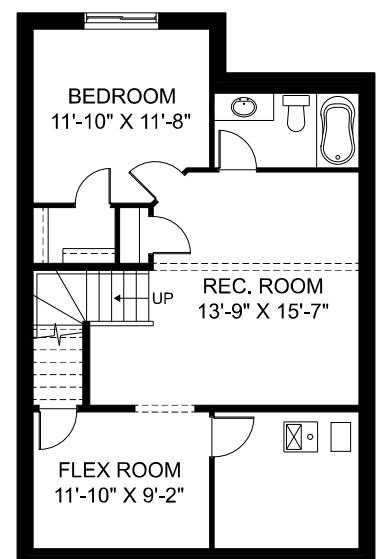
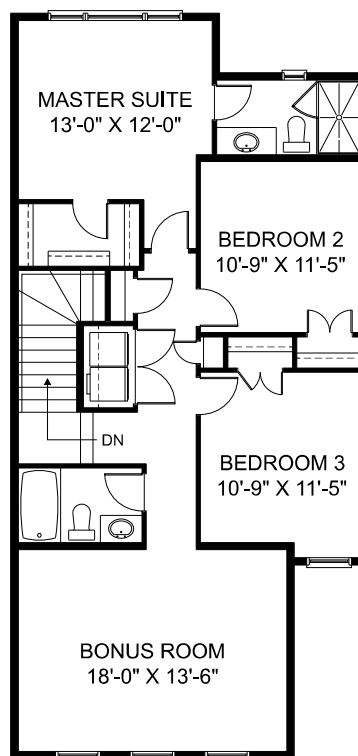
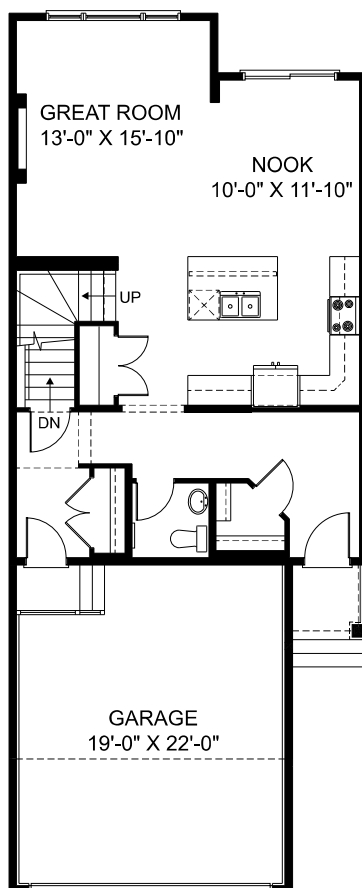
## Exteriors



In the continuing effort to improve our homes, builder reserves the right to modify the interior and exterior design, specifications, locations, sizes, design features and prices of the homes. Modifications may vary by home and are subject to change without notice. All dimensions and square footages are approximate and can vary in production. No representations of any type are made by this floor plan. Colors shown are approximate representations of actual materials and are not intended to be an exact color match. Please consult our sales representative for details.

[tricohomes.com](http://tricohomes.com)

Oxford



\*Optional Select 4  
Basement Development Shown  
622 Sq. Ft.

Floor Plan



In the continuing effort to improve our homes, builder reserves the right to modify the interior and exterior design, specifications, locations, sizes, design features and prices of the homes. Modifications may vary by home and are subject to change without notice. All dimensions and square footages are approximate and can vary in production. No representations of any type are made by this floor plan. Colors shown are approximate representations of actual materials and are not intended to be an exact color match. Please consult our sales representative for details.

[trichomes.com](http://trichomes.com)

Oxford



Exteriors



In the continuing effort to improve our homes, builder reserves the right to modify the interior and exterior design, specifications, locations, sizes, design features and prices of the homes. Modifications may vary by home and are subject to change without notice. All dimensions and square footages are approximate and can vary in production. No representations of any type are made by this floor plan. Colors shown are approximate representations of actual materials and are not intended to be an exact color match. Please consult our sales representative for details.

[tricohomes.com](http://tricohomes.com)