

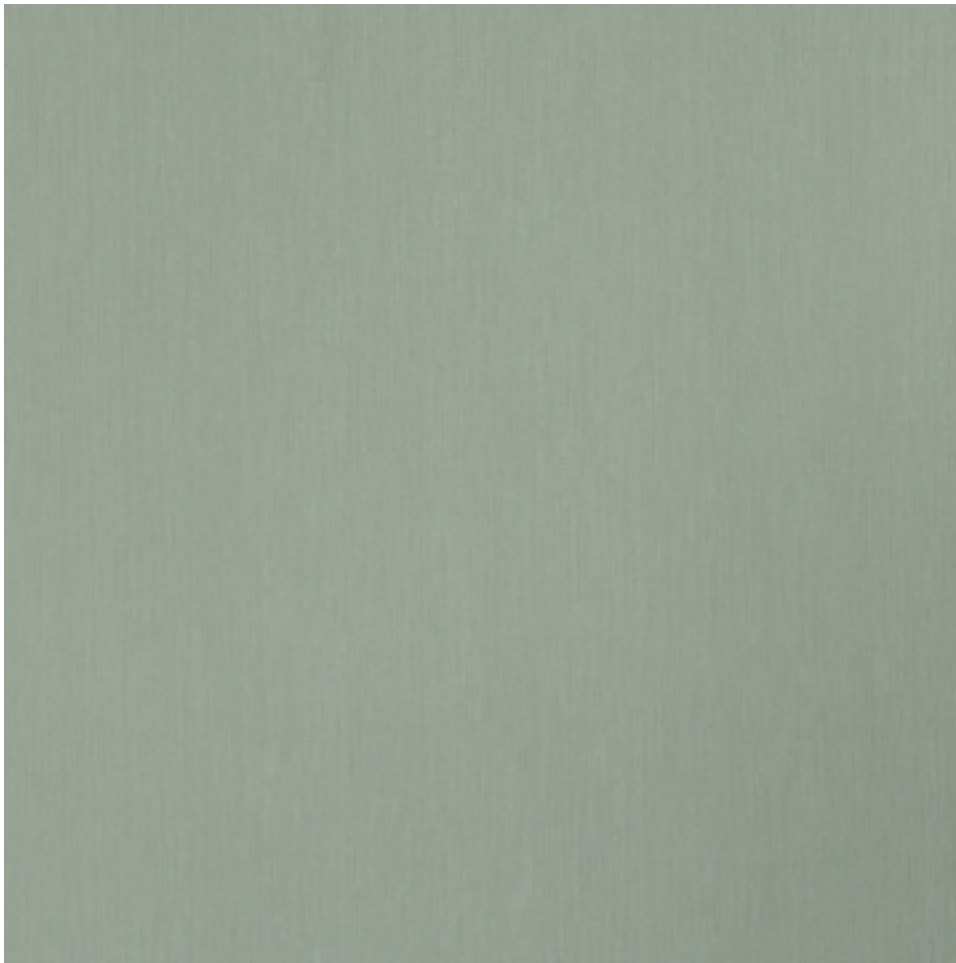


primewalls.com
info@primewalls.com
Prime is a trademark of Roya Manufacturing
and Supply Canada Inc.



Caravaggio

46791 Stroke



Features:

Scrubable, excellent lightfastness, paste the wall and dry strippable

Pattern Match:

Straight

Pattern Repeat:

0" (0 cm.)

Roll Dimensions (Double Roll):

53 cm. x 10.05 m. = 5.32 Square m.

20.8" x 32.97 ft. = 57.3 Square ft.

Basic Cleaning Instructions:

Stains should be removed as soon as possible to eliminate any possible reaction between the stain and the wall paper. Ordinary dirt spots can be removed with a mild soap and warm water. Rinse thoroughly with clean water.

Basic Hanging Instructions:

Make sure that the wall surface is clean, dry, level, and smooth. Refer to hanging instructions for further details.

Environmental Features:

- Cadmium and mercury free
- Water-based inks
- Produced in an energy efficient and non-VOC emitting manufacturing facility

notes _____

