

At the core of Social Prescribing is the Community Connectors, who play an instrumental role in bridging seniors with essential resources and support.

## What is the role of a Community Connector?

The Community Connector works with older adults who are referred from health care professionals and community partners to connect with community supports and services through referrals, applications, advocacy, and introductions. This role includes a diverse range of responsibilities - from conducting assessments based on the social determinants of health and co-developing personalized care plans, to providing practical supports to older adults and their families, to establishing and maintaining relationships with people and organizations in the community offering supports to older adults.



**United Way**  
British Columbia

Working with communities in BC's  
Interior, Lower Mainland, Central  
& Northern Vancouver Island



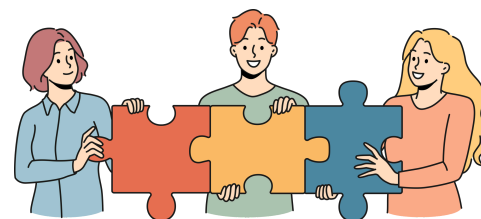
**Nanaimo Family Life Association**  
**1070 Townsite Road**  
**Nanaimo, BC**  
**V9S 1M6**

## CONTACT

**Amber Knapman**  
*Community Connector*  
**T: 250-754-3331 ext 206**  
**[a\\_knapman@nflabc.org](mailto:a_knapman@nflabc.org)**

# Social Prescribing

*A FREE service linking older adults to community programs and resources to navigate their unmet needs*



## What is social prescribing?

Social Prescribing represents a healthcare approach that recognizes the profound impact of social and environmental factors on a person's well-being.

This approach involves connecting older adults with non-medical services and activities in their community.

They can be referred to a community-based Social Prescribing organization by their friends / family, self referral, community based organizations, or health care provider.





**These social prescriptions can include various activities like participating in community groups, clubs, or classes, engaging in exercise sessions, joining walking groups, sports clubs, art classes, or music therapy, and exploring volunteer opportunities.**



### **You may need help with:**

- Mental health and wellbeing
- Social isolation and loneliness
- Debt and benefit information
- Housing information, advice and guidance
- Life style changes (eat well, become more active)
- Getting involved in creative activities, friendship groups

### **Who can access?**

*Anyone 55 years of age or older*

### **How to access?**

*Contact Nanaimo Family Life Association for referral information*

**Amber Knapman**

*Community Connector*

**(250)754-3331 ext 206**

**[a\\_knapman@nflabc.org](mailto:a_knapman@nflabc.org)**

**Social Prescribing  
Enhances Older Adults  
Mental Wellness and  
Human Connection**



**The positive effects of Social Prescribing are numerous and can lead to improved mental health, overall improved physical health, reduced social isolation, an overall enhancement in the quality of life, and decreased reliance on medical interventions.**

***'I am really grateful for my Community Connector. It has taken a lot of stress out of my day to day life '***

**- Lorraine M.  
(Social Prescribing Client)**