

# EW25.5

Regulatory area: NA

EW25.5









## Comfort: The best workplace



### Exclusive comfort

An unprecedented design guarantees maximum functionality and comfort; grouping the information provided to the driver and the controls of the various systems and devices for optimal ergonomics. The reverse shuttle on the steering wheel is also present on the joystick.

### Lighting

The standard configuration of e-WORKER range features 4 LED lights fitted on the cab overhead guard, which allow adequately illuminating the work area for safe and easy operation even in poorly lit environments and outdoor at night.

### User interface

The high ergonomics of controls, the tilting steering wheel, the armrest and a simplified user interface reduce operator fatigue and facilitate his/her work. The capacitive electronic joystick control is able to detect the presence of the operator by means of a sensor without pressing the "dead man" button".

## Efficiency: Simpler and smarter



### Descent by gravity

A solution that uses the weight of boom and load for the lowering movement, significantly limiting the demand for hydraulic power as well as the consumption and noise, without impacting on safety.

### Battery autonomy

The battery pack is sized to offer high autonomy, allowing continuous use throughout the work cycle. This allows the e-WORKER to work without interruption, ensuring significant performance and efficiency.

### Visibility

Merlo's improved visibility increases range of movement and safety for operators.

## Performance: Everything at your fingertips



### Steering

The e-WORKER only steers on the rear wheels, like forklifts. Making the most of the high steering angle of the wheels, that reaches 85°, the maximum encumbrance while steering is reduced to a minimum. Record-breaking performance and agility.

### Transmission

The power transmission is precise, constant, instantaneous and silent. Using a selector switch in the cab, it is possible to choose between three settings to adjust the machine's maximum speed, in order to reduce consumption or maximise performance as required.

### Hydraulic

The machine is configured with a pump with helical gears, powered by an electric motor and controlled by a capacitive electronic joystick control able to ensure up to three simultaneous movements without any problems for the operator, while keeping the machine's noise emissions very low.

## Safety: Simpler and smarter



### No emissions

The power transmission allows to completely reduce pollutant levels, for greater safety of the operator and those who work around the vehicle. For safe and unrestricted work, even in enclosed spaces.

### Braking system

The braking system consists of two wet disc brakes and an electric-hydraulic negative parking brake, that can be manually and automatically operated, the e-holder, which assists the operator in uphill starts and prevents the machine from moving on any slope.

### Certified cab

The cab is ROPS and FOPS Level I certified. The FOPS protection, achieved through a moulded metal structure inside the glass roof, ensures maximum visibility of the load during operation.



## 1 - COMFORT AT THE DRIVER SEAT

The 100% electric solution drastically reduces the machine's noise levels and vibrations typically transmitted to the operator by the combustion engine. This creates an optimal workstation, reducing fatigue and the risk of occupational diseases. Thanks to the cab's soundproofing system, the e-WORKER model offers an unmatched workplace in terms of comfort and quietness. Additionally, the external noise levels are extremely low, making communication between the driver and nearby workers easier.

## 2 - STEERING

Like forklifts, the e-WORKER only steers on the rear wheels. Making the most of the high steering angle of the wheels, that reaches 85°, the e-WORKER offers maximum encumbrance, while manoeuvring, 1 metre smaller than comparable competitor models with conventional steering systems. In this way the e-WORKER ensures best agility, manoeuvre and transfer speed in its category. A compact all-rounder!

## 3 - VISIBILITY

Merlo's improved visibility increases range of movement and safety for operators. To achieve these standards of visibility, Merlo has invested in understanding the best position of the cab and boom for the operator. Merlo has also developed a detailed bonnet design and a large glass surface with the aim of ensuring fast, safe and precise operations. In addition, two different brushes are installed on the machine to ensure perfect window cleaning even in heavy rain.

## 4 - REGENERATIVE BRAKING

To maximise machine efficiency and save all available energy, the e-WORKER's electric motors are able to recover braking energy. The regenerative braking system, unlike a conventional dynamic braking system, converts the kinetic energy of the machine into electric energy that is stored in the batteries. This slows down the machine and at the same time generates electrical energy immediately available, for example for lights or the display (on which there is an indication of the recovered energy).



PERFORMANCE AND FEATURES	EW25.5-60	EW25.5-90	
<b>Performance</b>			
Unladen weight (lb)	10913	10913	
Maximum load capacity (lb)	5000	5000	
Lift height (ft)	15,8	15,8	
Maximum reach (ft)	9	9	
Load capacity at max. lift height (lb)	3300	3300	
Load capacity at max. reach (lb)	2000	2000	
Lift height at max. load capacity (ft)	11.8	11.8	
Reach at max. load capacity (ft)	3.8	3.8	
Boom section	2	2	
<b>Powertrain</b>			
Engine	2 x Electrical	3 x Electrical	
Battery (type and V)	Lead Acid - 48 V	Lead Acid - 48 V	
Nominal capacity	960 Ah	960 Ah	
Emissions	—	—	
Engine power (kW/HP)	40/60	66/90	
Maximum speed (mph)	15,5	15,5	
Traction	2WD, 3 traction modes	4WD, 3 traction modes	
Autonomy (hours)	8h	8h	
Recharge time	9h (220V)	9h (220V)	
Recharge voltage	220V/400V	220V/400V	
Battery charger	●	●	
<b>Hydraulic</b>			
Hydraulic pump	G+ FS	G+ FS	
Hydraulics pressure (gal/min-psi)	11.1 – 3045,8	11.1 – 3045,8	
Auxiliary hydraulic service on boom	●	●	
Rear service line	○	○	
<b>Cab</b>			
Closed cab	○	○	
FOPS LIV I and ROPS	●	●	
Controls	Electronic joystick control	Electronic joystick control	
Reverse shuttle	Dual Reverse	Dual Reverse	
<b>Configuration</b>			
Battery fast replacement	●	●	
Tac-lock	●	●	
Work lights on cab (LED)	●	●	
Rotating beacon and blue reverse light	●	●	
Two floating forks	●	●	
Hydropneumatic Suspension BSS Merlo	○	○	
Two steering wheels	Rear	Rear	
Front standard tyres	AS 504 10,0/75-15,3 18PR	AS 504 10,0/75-15,3 18PR	
Rear standard tyres	AW702 10,0/75-15,3 18PR	AS 504 10,0/75-15,3 18PR	
Rear axle	Axial	Axial	
E-holder brakes	●	●	
Regenerative braking	●	●	
Automatic parking brake	●	●	
Pre-arrangement for aerial work platform	○	○	
Tractor type approval	—	○	

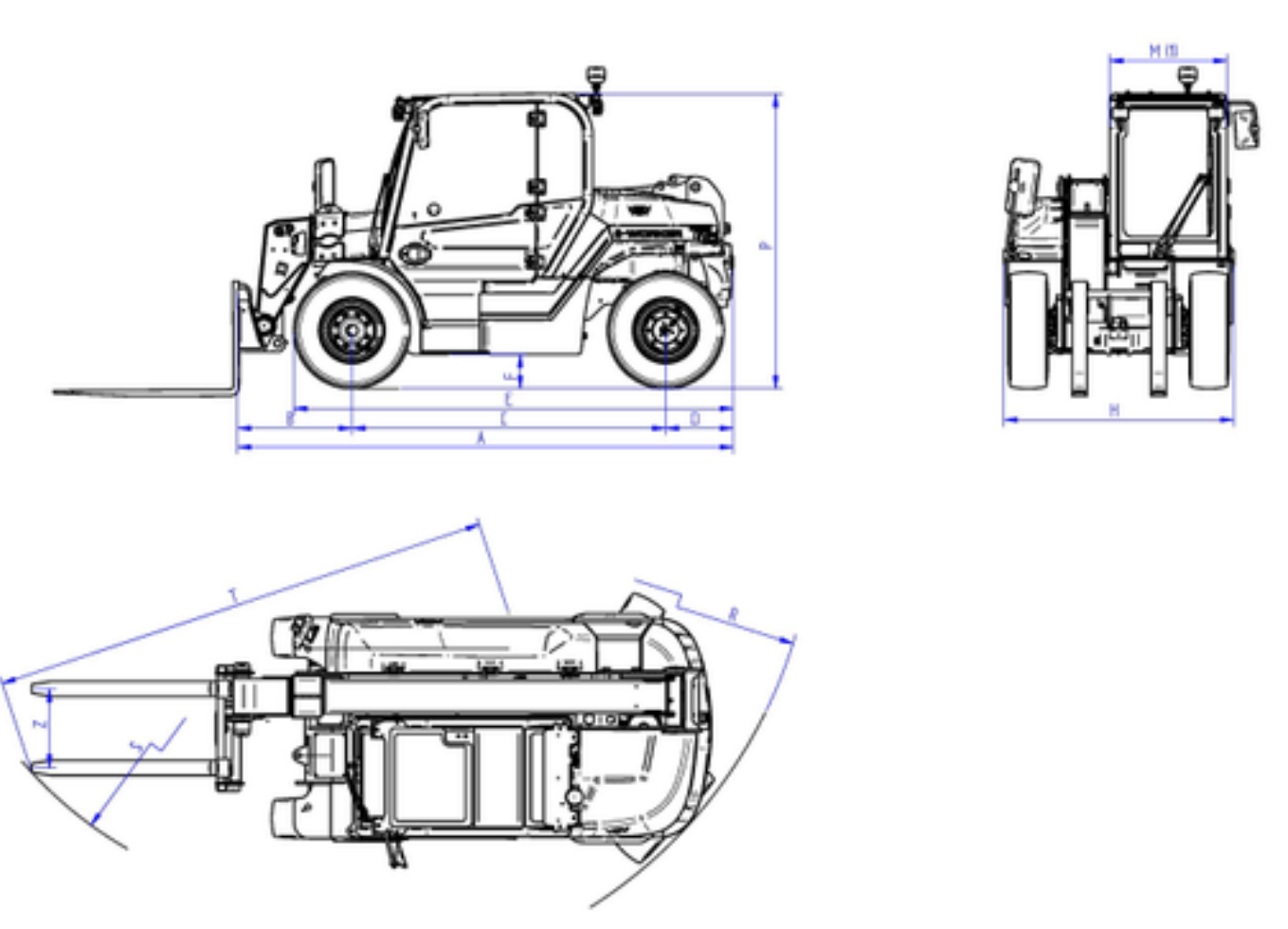
— not available  
● standard  
○ optional

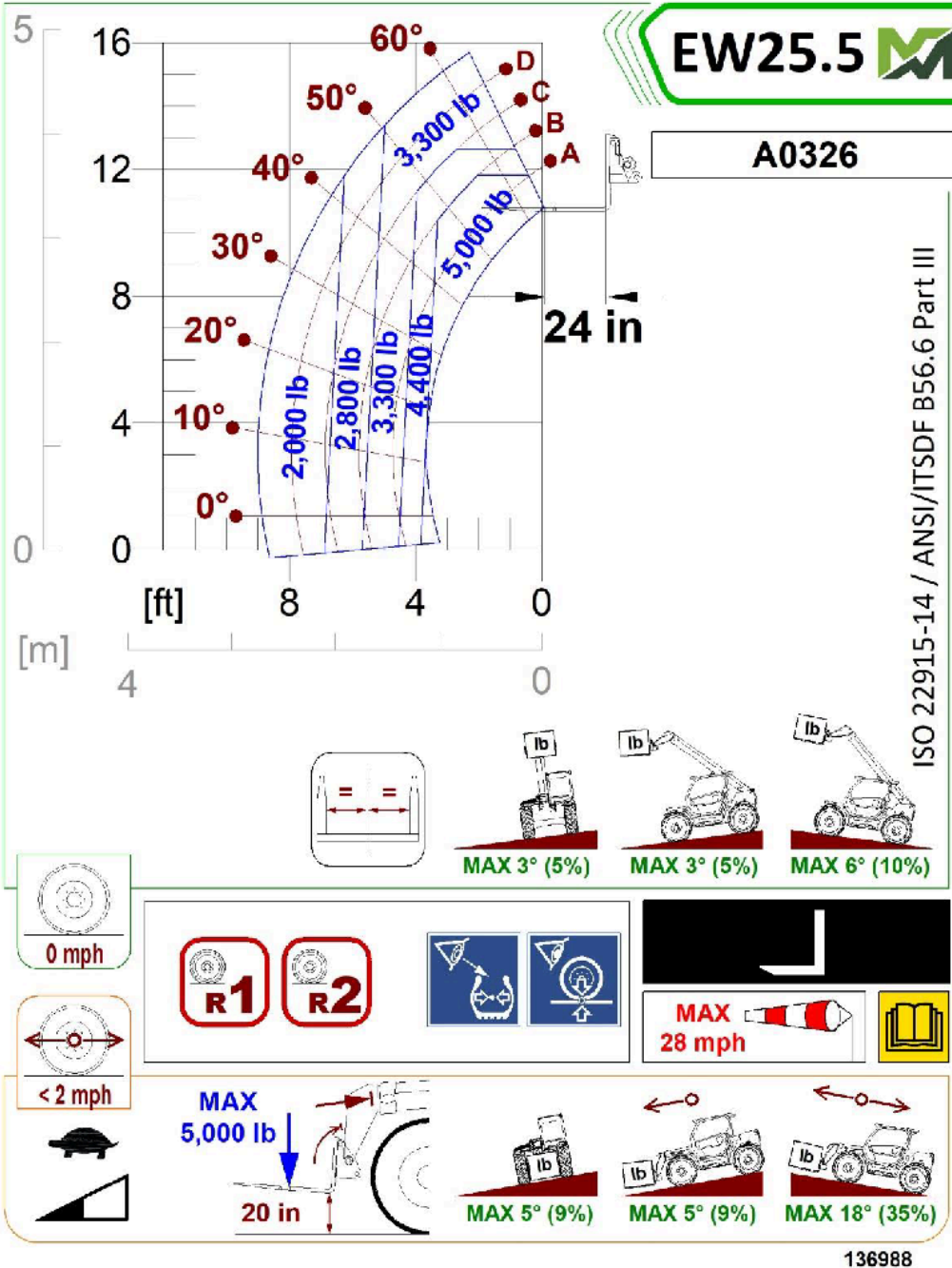
# Dimensions



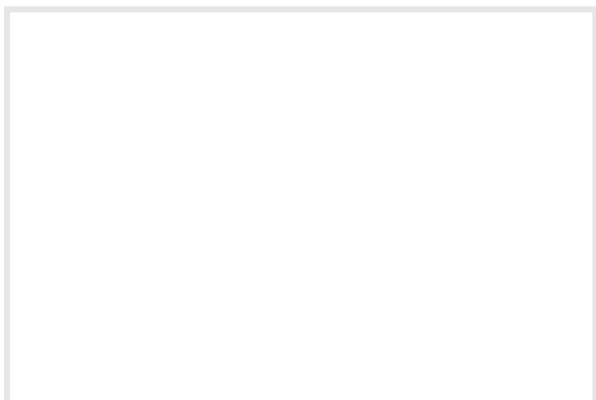
	EW25.5-60	EW25.5-90
Dimension_A (in)	130,7	130,7
Dimension_B (in)	30,1	30,1
Dimension_C (in)	82,7	82,7
Dimension_D (in)	17,9	17,9
Dimension_E (in)	115,7	115,7
Dimension_F (in)	9	9
Dimension_H (in)	60,6	60,6
Dimension_M (in)	30,3	30,3
Dimension_P (in)	77,8	77,8
Dimension_R (in)	112,2	128,0
Dimension_S (in)	87,8	106,3
Dimension_T (in)	132,5	132,5
Dimension_Z (in)	21,7	21,7

# Technical Details





### **Your Merlo dealer**



### **MERLO S.P.A.**

Via Nazionale, 9  
12010 S. Defendente di Cervasca,  
(Cuneo) Italia  
Tel. +39 0171 614111

**info@merlo.com**  
**www.merlo.com**

