

# Tractors telehandlers

Regulatory area: NA

MF34.7





## Comfort: The best workplace



### Exclusive comfort

An unprecedented design guarantees maximum functionality and comfort; grouping the information provided to the driver and the controls of the various systems and devices for optimal ergonomics. The reverse shuttle on the steering wheel is also present on the joystick.

### Cab entry

To ensure simple and easy access to the cab, the door of Merlo telehandlers can be opened by up to 180°. In addition, the inside of the door is equipped with a large handrail to help the operator when getting inside and outside of the cab.

### Air-conditioning

Developed according to automotive standards, cutting the warm-up and cool-down times in half compared to a conventional air conditioning system. The inlet vent is placed on the side of the cab, away from potential sources of dust and dirt, while inside there are 8 vents.

## Efficiency: Simpler and smarter



### Transmission

In order to ensure a reduction in consumption and operating costs, Merlo telescopic handlers boast full electronic management of the transmission and engine, in order to minimise RPM and, consequently, fuel demand.

### Steering Modes

The axles ensure the maximum steering angle to perform manoeuvres in tight spaces. Additionally, the operator can manage the steering of the machine with three different options according to the specific needs of the job.

### Visibility

Merlo's improved visibility increases range of movement and safety for operators.

## Performance: Everything at your fingertips



### Transmission

The Merlo telehandlers have excellent braking capacity when the accelerator pedal is released, guaranteeing high torque to the wheels during material handling and transfers, as well as millimetric precision of movements when positioning the load.

### Engines

All models feature a combustion engine in an original Merlo mounting layout, developed by Merlo with the invention of the panoramic visibility models, ensuring maximum accessibility to components in case of programmed and/or extraordinary maintenance.

### Axles

The exclusively designed axles are manufactured and developed in-house by Merlo, and can be equipped with differential lock to ensure traction on any terrain, regardless of how unstable.

## Safety: Not just feelings



### Active safety

In order to remain fully compliant with regulations in frontal tipping prevention, Merlo handlers are equipped with features developed specifically to keep the operator safe from frontal tipping, without sacrificing performance, particularly of boom speed and lifting capacity.

### Aerial work platform

The Merlo telehandlers can be configured with aerial work platform. This solution, complying with EN280 standard, assures an increased level of active and passive safety during work at heights, and enhances machine versatility.

### Certified cab

All Merlo telehandlers have a metal structure above the glass roof on the outside of the cab to comply fully with FOPS Level II standard, the most stringent certification level in protecting the operator from falling objects.



<b>1 - ASCS</b>	The ASCS safety system: the ideal assistant! The system adjusts the speed and maximum extent of the movements based on the attachments in use, the load being handled and its position, thus eliminating the risk of overturning. Standard on the entire range with LS hydraulic system.
<b>2 - SUSPENDED CAB</b>	The cab that's earned its place in history! Thanks to the active hydropneumatic suspension, you'll feel like you're seated on a comfortable cushion, even when driving over the roughest terrain. Standard on all CS models.
<b>3 - EPD ECO POWER DRIVE</b>	Maximum savings and efficiency! The Merlo-patented EPD system electronically controls engine and transmission. It manages engine speed, hydrostatic pump flow rate, and hydrostatic drive displacement, maximising efficiency and reducing RPM, saving up to 18% in fuel consumption.
<b>4 - MECHANICAL PTO</b>	Merlo was the first company on the market to translate the concept of a telescopic boom tractor into reality and to patent it. The 3-point linkage, PTO, trailer hitch and hydraulic distributors are the specifications that make your Multifarmer the special agricultural machine. Standard on the entire Multifarmer range



## PERFORMANCE AND FEATURES

## MF34.7-140

## MF34.7CS-140-CVTRONIC

## MF34.7CS-140

### Performance

Unladen weight (lb)	17416	17637	17637
Maximum load capacity (lb)	7000	7000	7000
Lift height (ft)	22' 5"	22' 5"	22' 5"
Maximum reach (m)	13' 0"	13' 0"	13' 0"
Lift height at max. load capacity (m)	22' 5"	22' 5"	22' 5"
Reach at max. load capacity (m)	5' 0"	5' 0"	5' 0"
Load capacity at max. lift height (m)	7000	7000	7000
Load capacity at max. reach (kg)	2900	2900	2900
Boom side-shift (mm)	—	—	—
Frame levelling (%)	+/- 8	+/- 8	+/- 8
Boom section	2	2	2

Unladen weight (lb)	17416	17637	17637
Maximum load capacity (lb)	7000	7000	7000
Lift height (ft)	22' 5"	22' 5"	22' 5"
Maximum reach (m)	13' 0"	13' 0"	13' 0"
Lift height at max. load capacity (m)	22' 5"	22' 5"	22' 5"
Reach at max. load capacity (m)	5' 0"	5' 0"	5' 0"
Load capacity at max. lift height (m)	7000	7000	7000
Load capacity at max. reach (kg)	2900	2900	2900
Boom side-shift (mm)	—	—	—
Frame levelling (%)	+/- 8	+/- 8	+/- 8
Boom section	2	2	2

Unladen weight (lb)	17416	17637	17637
Maximum load capacity (lb)	7000	7000	7000
Lift height (ft)	22' 5"	22' 5"	22' 5"
Maximum reach (m)	13' 0"	13' 0"	13' 0"
Lift height at max. load capacity (m)	22' 5"	22' 5"	22' 5"
Reach at max. load capacity (m)	5' 0"	5' 0"	5' 0"
Load capacity at max. lift height (m)	7000	7000	7000
Load capacity at max. reach (kg)	2900	2900	2900
Boom side-shift (mm)	—	—	—
Frame levelling (%)	+/- 8	+/- 8	+/- 8
Boom section	2	2	2

Unladen weight (lb)	17416	17637	17637
Maximum load capacity (lb)	7000	7000	7000
Lift height (ft)	22' 5"	22' 5"	22' 5"
Maximum reach (m)	13' 0"	13' 0"	13' 0"
Lift height at max. load capacity (m)	22' 5"	22' 5"	22' 5"
Reach at max. load capacity (m)	5' 0"	5' 0"	5' 0"
Load capacity at max. lift height (m)	7000	7000	7000
Load capacity at max. reach (kg)	2900	2900	2900
Boom side-shift (mm)	—	—	—
Frame levelling (%)	+/- 8	+/- 8	+/- 8
Boom section	2	2	2

### Powertrain

Engine	Deutz TCD3.6	Deutz TCD3.6	Deutz TCD3.6
Range/Cylinders	3600/4	3600/4	3600/4
Engine power (kW/HP)	100/136	100/136	100/136
Anti-pollution technology	Tier 4	Tier 4	Tier 4
Reversible Fan	○	○	○
Maximum speed (km/h)	25	25	25
Fuel tank capacity (l)	37	37	37
AdBlue tank capacity (l)	4.8	4.8	4.8
Hydrostatic transmission	●	CVTronic	●
EPD	PLUS	PLUS	Plus
Joystick autoaccelerante	STD	STD	STD
Axles	Axial	Axial	Axial
Reducers	Epicyclic	Epicyclic	Epicyclic
Brakes	Dry discs	Dry discs	Dry discs
Automatic parking brake	●	●	●

Engine	Deutz TCD3.6	Deutz TCD3.6	Deutz TCD3.6
Range/Cylinders	3600/4	3600/4	3600/4
Engine power (kW/HP)	100/136	100/136	100/136
Anti-pollution technology	Tier 4	Tier 4	Tier 4
Reversible Fan	○	○	○
Maximum speed (km/h)	25	25	25
Fuel tank capacity (l)	37	37	37
AdBlue tank capacity (l)	4.8	4.8	4.8
Hydrostatic transmission	●	CVTronic	●
EPD	PLUS	PLUS	Plus
Joystick autoaccelerante	STD	STD	STD
Axles	Axial	Axial	Axial
Reducers	Epicyclic	Epicyclic	Epicyclic
Brakes	Dry discs	Dry discs	Dry discs
Automatic parking brake	●	●	●

Engine	Deutz TCD3.6	Deutz TCD3.6	Deutz TCD3.6
Range/Cylinders	3600/4	3600/4	3600/4
Engine power (kW/HP)	100/136	100/136	100/136
Anti-pollution technology	Tier 4	Tier 4	Tier 4
Reversible Fan	○	○	○
Maximum speed (km/h)	25	25	25
Fuel tank capacity (l)	37	37	37
AdBlue tank capacity (l)	4.8	4.8	4.8
Hydrostatic transmission	●	CVTronic	●
EPD	PLUS	PLUS	Plus
Joystick autoaccelerante	STD	STD	STD
Axles	Axial	Axial	Axial
Reducers	Epicyclic	Epicyclic	Epicyclic
Brakes	Dry discs	Dry discs	Dry discs
Automatic parking brake	●	●	●

Engine	Deutz TCD3.6	Deutz TCD3.6	Deutz TCD3.6
Range/Cylinders	3600/4	3600/4	3600/4
Engine power (kW/HP)	100/136	100/136	100/136
Anti-pollution technology	Tier 4	Tier 4	Tier 4
Reversible Fan	○	○	○
Maximum speed (km/h)	25	25	25
Fuel tank capacity (l)	37	37	37
AdBlue tank capacity (l)	4.8	4.8	4.8
Hydrostatic transmission	●	CVTronic	●
EPD	PLUS	PLUS	Plus
Joystick autoaccelerante	STD	STD	STD
Axles	Axial	Axial	Axial
Reducers	Epicyclic	Epicyclic	Epicyclic
Brakes	Dry discs	Dry discs	Dry discs
Automatic parking brake	●	●	●

### Hydraulic

Hydraulic pump	LS + FS	LS + FS	LS + FS
Delivery / pressure (L / MIN - BAR)	38,3 - 3045	38,3 - 3045	38,3 - 3045
Hydraulic oil tank capacity (l)	26.4	26.4	26.4
Auxiliary hydraulic service on boom	●	●	●
Rear service line	2 - STD	2 - STD	2 - STD

Hydraulic pump	LS + FS	LS + FS	LS + FS
Delivery / pressure (L / MIN - BAR)	38,3 - 3045	38,3 - 3045	38,3 - 3045
Hydraulic oil tank capacity (l)	26.4	26.4	26.4
Auxiliary hydraulic service on boom	●	●	●
Rear service line	2 - STD	2 - STD	2 - STD

Hydraulic pump	LS + FS	LS + FS	LS + FS
Delivery / pressure (L / MIN - BAR)	38,3 - 3045	38,3 - 3045	38,3 - 3045
Hydraulic oil tank capacity (l)	26.4	26.4	26.4
Auxiliary hydraulic service on boom	●	●	●
Rear service line	2 - STD	2 - STD	2 - STD

Hydraulic pump	LS + FS	LS + FS	LS + FS
Delivery / pressure (L / MIN - BAR)	38,3 - 3045	38,3 - 3045	38,3 - 3045
Hydraulic oil tank capacity (l)	26.4	26.4	26.4
Auxiliary hydraulic service on boom	●	●	●
Rear service line	2 - STD	2 - STD	2 - STD

### Cab

Cab finishing	ECO	ECO	ECO
ASCS	Light	Light	Light
FOPS II Cab	●	●	●
ROPS Cab	●	●	●
Controls	Electronic joystick control	Electronic joystick control	Electronic joystick control
Tilting cab	-	-	-
Reverse shuttle	Dual reverse	Dual reverse	Dual reverse

Cab finishing	ECO	ECO	ECO
ASCS	Light	Light	Light
FOPS II Cab	●	●	●
ROPS Cab	●	●	●
Controls	Electronic joystick control	Electronic joystick control	Electronic joystick control
Tilting cab	-	-	-
Reverse shuttle	Dual reverse	Dual reverse	Dual reverse

Cab finishing	ECO	ECO	ECO
ASCS	Light	Light	Light
FOPS II Cab	●	●	●
ROPS Cab	●	●	●
Controls	Electronic joystick control	Electronic joystick control	Electronic joystick control
Tilting cab	-	-	-
Reverse shuttle	Dual reverse	Dual reverse	Dual reverse

Cab finishing	ECO	ECO	ECO
ASCS	Light	Light	Light
FOPS II Cab	●	●	●
ROPS Cab	●	●	●
Controls	Electronic joystick control	Electronic joystick control	Electronic joystick control
Tilting cab	-	-	-
Reverse shuttle	Dual reverse	Dual reverse	Dual reverse

### Configuration

Hydropneumatic Suspension CS Merlo	—	●	●
Hydropneumatic Suspension BSS Merlo	○	○	○
Hydropneumatic Suspension EAS Merlo	—	—	—
Work lights on cab	●	●	●
Sun-shade in the cab	○	○	○
Tac-lock	●	●	●
Pre-arrangement for aerial work platform	○	○	○
Two floating forks	●	●	●
Pedal Inching-Control	●	●	●
Permanent four-wheel drive	●	●	●
All wheel steering	●	●	●
Three steering way	●	●	●
Standard tyres	400/420-R205/70	400/420-R205/70	400/420-R205/70
OPT tyres	20"; 400/70 24"; 405/70 24"; 405/70	20"; 400/70 24"; 405/70 24"; 405/70	20"; 400/70 24"; 405/70 24"; 405/70
Hydraulically controlled stabilizers	-	-	-
Turret rotation	-	-	-
Tractor type approval	●	●	●
Pneumatic brakes (ton)	○	○	○
Hydraulic brakes (ton)	○	○	○
PTO	●	●	●
3-point rear linkage	●	●	●

Hydropneumatic Suspension CS Merlo	—	●	●
Hydropneumatic Suspension BSS Merlo	○	○	○
Hydropneumatic Suspension EAS Merlo	—	—	—
Work lights on cab	●	●	●
Sun-shade in the cab	○	○	○
Tac-lock	●	●	●
Pre-arrangement for aerial work platform	○	○	○
Two floating forks	●	●	●
Pedal Inching-Control	●	●	●
Permanent four-wheel drive	●	●	●
All wheel steering	●	●	●
Three steering way	●	●	●
Standard tyres	400/420-R205/70	400/420-R205/70	400/420-R205/70
OPT tyres	20"; 400/70 24"; 405/70 24"; 405/70	20"; 400/70 24"; 405/70 24"; 405/70	20"; 400/70 24"; 405/70 24"; 405/70
Hydraulically controlled stabilizers	-	-	-
Turret rotation	-	-	-
Tractor type approval	●	●	●
Pneumatic brakes (ton)	○	○	○
Hydraulic brakes (ton)	○	○	○
PTO	●	●	●
3-point rear linkage	●	●	●

Hydropneumatic Suspension CS Merlo	—	●	●
Hydropneumatic Suspension BSS Merlo	○	○	○
Hydropneumatic Suspension EAS Merlo	—	—	—
Work lights on cab	●	●	●
Sun-shade in the cab	○	○	○
Tac-lock	●	●	●
Pre-arrangement for aerial work platform	○	○	○
Two floating forks	●	●	●
Pedal Inching-Control	●	●	●
Permanent four-wheel drive	●	●	●
All wheel steering	●	●	●
Three steering way	●	●	●
Standard tyres	400/420-R205/70	400/420-R205/70	400/420-R205/70
OPT tyres	20"; 400/70 24"; 405/70 24"; 405/70	20"; 400/70 24"; 405/70 24"; 405/70	20"; 400/70 24"; 405/70 24"; 405/70
Hydraulically controlled stabilizers	-	-	-
Turret rotation	-	-	-
Tractor type approval	●	●	●
Pneumatic brakes (ton)	○	○	○
Hydraulic brakes (ton)	○	○	○
PTO	●	●	●
3-point rear linkage	●	●	●

Hydropneumatic Suspension CS Merlo	—	●	●
Hydropneumatic Suspension BSS Merlo	○	○	○
Hydropneumatic Suspension EAS Merlo	—	—	—
Work lights on cab	●	●	●
Sun-shade in the cab	○	○	○
Tac-lock	●	●	●
Pre-arrangement for aerial work platform	○	○	○
Two floating forks	●	●	●
Pedal Inching-Control	●	●	●
Permanent four-wheel drive	●	●	●
All wheel steering	●	●	●
Three steering way	●	●	●
Standard tyres	400/420-R205/70	400/420-R205/70	400/420-R205/70
OPT tyres	20"; 400/70 24"; 405/70 24"; 405/70	20"; 400/70 24"; 405/70 24"; 405/70	20"; 400/70 24"; 405/70 24"; 405/70
Hydraulically controlled stabilizers	-	-	-
Turret rotation	-	-	-
Tractor type approval	●	●	●
Pneumatic brakes (ton)	○	○	○
Hydraulic brakes (ton)	○	○	○
PTO	●	●	●
3-point rear linkage	●	●	●

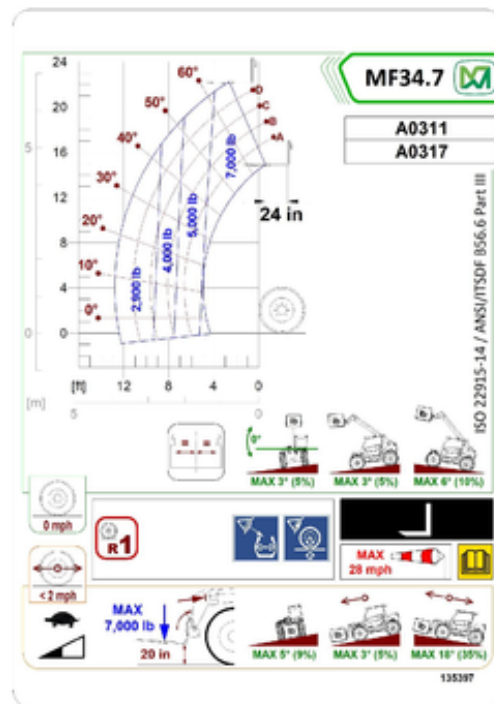
- not available
- standard
- optional

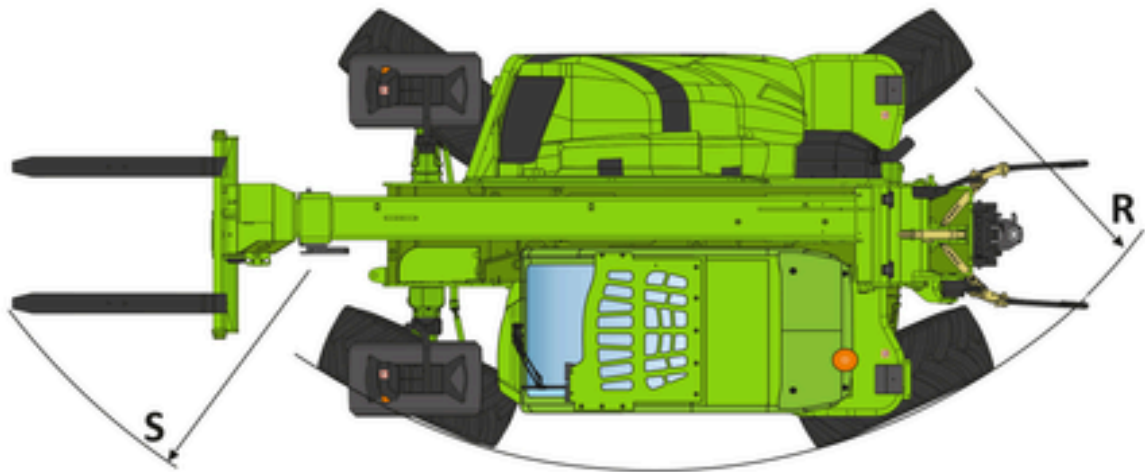
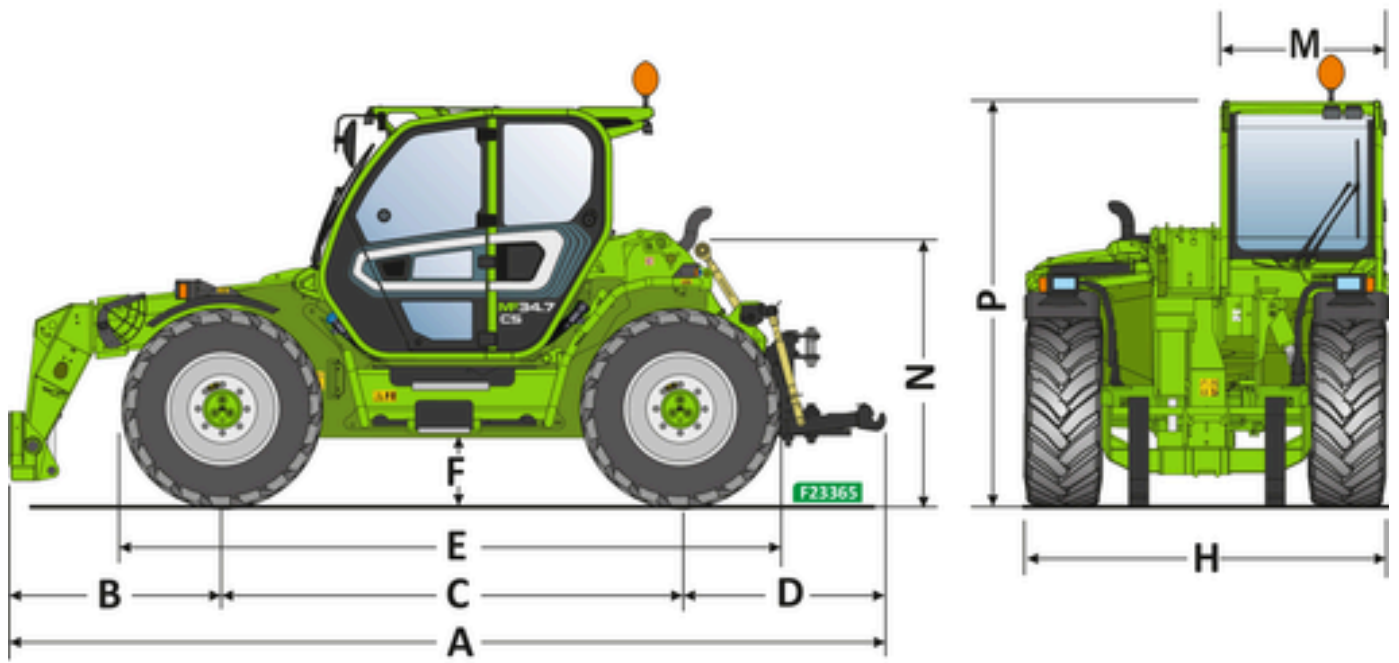
## Dimensions



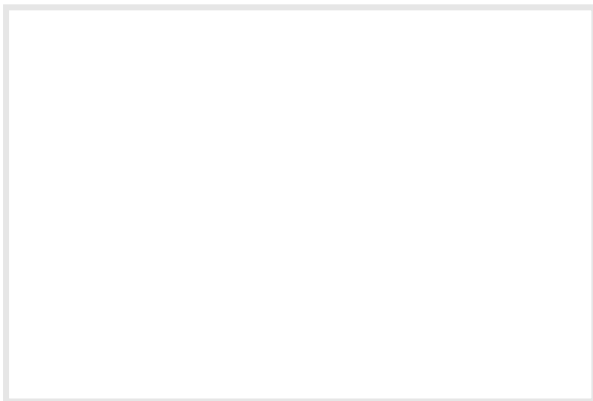
	MF34.7-140	MF34.7CS-140-CVTRONIC	MF34.7CS-140
A - Length	214	214	214
C - Wheelbase	112	112	112
F - Ground clearance	17	17	17
H - Width	88	88	88
M - Cabin width	40	40	40
P - Height	98	98	98
R - Turning radius at wheels	151	151	151
S - Turning radius at forks	193	193	193

## Technical Details





## Your Merlo dealer



### **MERLO S.P.A.**

Via Nazionale, 9  
12010 S. Defendente di Cervasca,  
(Cuneo) Italia  
Tel. +39 0171 614111

**[info@merlo.com](mailto:info@merlo.com)**  
**[www.merlo.com](http://www.merlo.com)**

