

High capacity telehandlers

Regulatory area: NA

TF65.9





Comfort: The best workplace



Exclusive comfort

An unprecedented design guarantees maximum functionality and comfort; grouping the information provided to the driver and the controls of the various systems and devices for optimal ergonomics. The reverse shuttle on the steering wheel is also present on the joystick.

Cab entry

To ensure simple and easy access to the cab, the door of Merlo telehandlers can be opened by up to 180°. In addition, the inside of the door is equipped with a large handrail to help the operator when getting inside and outside of the cab.

Air-conditioning

Developed according to automotive standards, cutting the warm-up and cool-down times in half compared to a conventional air conditioning system. The inlet vent is placed on the side of the cab, away from potential sources of dust and dirt, while inside there are 8 vents.

Efficiency: Simpler and smarter



Transmission

In order to ensure a reduction in consumption and operating costs, Merlo telescopic handlers boast full electronic management of the transmission and engine, in order to minimise RPM and, consequently, fuel demand.

Steering Modes

The axles ensure the maximum steering angle to perform manoeuvres in tight spaces. Additionally, the operator can manage the steering of the machine with three different options according to the specific needs of the job.

Visibility

Merlo's improved visibility increases range of movement and safety for operators.

Performance: Everything at your fingertips



Transmission

The Merlo telehandlers have excellent braking capacity when the accelerator pedal is released, guaranteeing high torque to the wheels during material handling and transfers, as well as millimetric precision of movements when positioning the load.

Engines

All models feature a combustion engine in an original Merlo mounting layout, developed by Merlo with the invention of the panoramic visibility models, ensuring maximum accessibility to components in case of programmed and/or extraordinary maintenance.

Axles

The exclusively designed axles are manufactured and developed in-house by Merlo, and can be equipped with differential lock to ensure traction on any terrain, regardless of how unstable.

Safety: Not just feelings



Active safety

In order to remain fully compliant with regulations in frontal tipping prevention, Merlo handlers are equipped with features developed specifically to keep the operator safe from frontal tipping, without sacrificing performance, particularly of boom speed and lifting capacity.

Aerial work platform

The Merlo telehandlers can be configured with aerial work platform. This solution, complying with EN280 standard, assures an increased level of active and passive safety during work at heights, and enhances machine versatility.

Certified cab

All Merlo telehandlers have a metal structure above the glass roof on the outside of the cab to comply fully with FOPS Level II standard, the most stringent certification level in protecting the operator from falling objects.



1 - ASCS

The ASCS safety system: the ideal assistant! The system adjusts the speed and maximum extent of the movements based on the attachments in use, the load being handled and its position, thus eliminating the risk of overturning. Standard on the entire range with LS hydraulic system.

2 - EPD ECO POWER DRIVE

Maximum savings and efficiency! The Merlo-patented EPD system electronically controls engine and transmission. It manages engine speed, hydrostatic pump flow rate, and hydrostatic drive displacement, maximising efficiency and reducing RPM, saving up to 18% in fuel consumption.

3 - BOOM SUSPENSION

Load protected in all conditions? Of course! Thanks to the active boom suspension (BSS technology). Precision and power guaranteed thanks to automatic deactivation below 3 km/h.

**PERFORMANCE AND FEATURES****TF65.9TCS-170-HF****TF65.9T-170-HF****TF65.9TCS-170-CVTRONIC-HF****Performance**

Unladen weight (lb)	24691	24250	24801
Maximum load capacity (lb)	14300	14300	14300
Lift height (ft)	28' 9"	28' 9"	28' 9"
Maximum reach (ft)	15' 4"	15' 4"	15' 4"
Lift height at max. load capacity (ft)	22' 0"	22' 0"	22' 0"
Reach at max. load capacity (ft)	6' 0"	6' 0"	6' 0"
Load capacity at max. lift height (ft)	9700	9700	9700
Load capacity at max. reach (lb)	4400	4400	4400
Boom side-shift (mm)	-	-	-
Frame levelling (%)	+/-8	+/-8	+/-8
Boom section	2	2	2

24691	24250	24801
14300	14300	14300
28' 9"	28' 9"	28' 9"
15' 4"	15' 4"	15' 4"
22' 0"	22' 0"	22' 0"
6' 0"	6' 0"	6' 0"
9700	9700	9700
4400	4400	4400
-	-	-
+/-8	+/-8	+/-8
2	2	2

24250	24801
14300	14300
28' 9"	28' 9"
15' 4"	15' 4"
22' 0"	22' 0"
6' 0"	6' 0"
9700	9700
4400	4400
-	-
+/-8	+/-8
2	2

24801	14300	28' 9"	15' 4"	22' 0"	6' 0"	9700	4400	-	+/-8	2
-------	-------	--------	--------	--------	-------	------	------	---	------	---

Powertrain

Engine	FPT NEF45	FPT NEF45	FPT NEF45
Range/Cylinders	4500/4	4500/4	4500/4
Engine power (kW/HP)	125/170	125/170	125/170
Anti-pollution technology	Tier 4	Tier 4	Tier 4
Reversible Fan	○	○	○
Maximum speed (mph)	25	25	25
Fuel tank capacity (gal)	37	37	37
AdBlue tank capacity (gal)	4.8	4.8	4.8
Hydrostatic transmission	●	●	CVTronic
EPD	Plus	Plus	Plus
Electronic joystick	STD	STD	STD
Axles	Axial	Axial	Axial
Reducers	Epicyclic	Epicyclic	Epicyclic
Brakes	Dry discs	Dry discs	Dry discs
Automatic parking brake	●	●	●

FPT NEF45	FPT NEF45	FPT NEF45
4500/4	4500/4	4500/4
125/170	125/170	125/170
Tier 4	Tier 4	Tier 4
○	○	○
25	25	25
37	37	37
4.8	4.8	4.8
●	●	CVTronic
Plus	Plus	Plus
STD	STD	STD
Axial	Axial	Axial
Epicyclic	Epicyclic	Epicyclic
Dry discs	Dry discs	Dry discs
●	●	●

FPT NEF45	FPT NEF45	FPT NEF45
4500/4	4500/4	4500/4
125/170	125/170	125/170
Tier 4	Tier 4	Tier 4
○	○	○
25	25	25
37	37	37
4.8	4.8	4.8
●	●	CVTronic
Plus	Plus	Plus
STD	STD	STD
Axial	Axial	Axial
Epicyclic	Epicyclic	Epicyclic
Dry discs	Dry discs	Dry discs
●	●	●

FPT NEF45	4500/4	125/170	Tier 4	○	25	37	4.8	CVTronic	Plus	STD	Axial	Epicyclic	Dry discs	●
-----------	--------	---------	--------	---	----	----	-----	----------	------	-----	-------	-----------	-----------	---

Hydraulic

Hydraulic pump	HF	HF	HF
Delivery / pressure (bar-l/min)	42,3 - 3626	42,3 - 3626	42,3 - 3626
Hydraulic oil tank capacity (gal)	26.4	26.4	26.4
Auxiliary hydraulic service on boom	●	●	●
Rear service line	○	○	○

HF	HF	HF
42,3 - 3626	42,3 - 3626	42,3 - 3626
26.4	26.4	26.4
●	●	●
○	○	○

HF	HF	HF
42,3 - 3626	42,3 - 3626	42,3 - 3626
26.4	26.4	26.4
●	●	●
○	○	○

HF	HF	HF
42,3 - 3626	42,3 - 3626	42,3 - 3626
26.4	26.4	26.4
●	●	●
○	○	○

Cab

Cab finishing	PREMIUM	PREMIUM	PREMIUM
ASCS	Completo	Completo	Completo
FOPS II Cab	●	●	●
ROPS Cab	●	●	●
Controls	Electronic joystick control	Electronic joystick control	Electronic joystick control
Tilting cab	-	-	-
Reverse shuttle	Dual reverse	Dual reverse	Dual reverse

PREMIUM	PREMIUM	PREMIUM
Completo	Completo	Completo
●	●	●
●	●	●
Electronic joystick control	Electronic joystick control	Electronic joystick control
-	-	-
Dual reverse	Dual reverse	Dual reverse

PREMIUM	PREMIUM	PREMIUM
Completo	Completo	Completo
●	●	●
●	●	●
Electronic joystick control	Electronic joystick control	Electronic joystick control
-	-	-
Dual reverse	Dual reverse	Dual reverse

PREMIUM	PREMIUM	PREMIUM
Completo	Completo	Completo
●	●	●
●	●	●
Electronic joystick control	Electronic joystick control	Electronic joystick control
-	-	-
Dual reverse	Dual reverse	Dual reverse

Configuration

Hydropneumatic Suspension CS Merlo	●	-	●
Hydropneumatic Suspension BSS Merlo	●	●	●
Hydropneumatic Suspension EAS Merlo	-	-	-
Work lights on cab	●	●	●
Sun-shade in the cab	●	●	●
Tac-lock	●	●	●
Pre-arrangement for aerial work platform	-	-	-
Two floating forks	●	●	●
Pedal Inching-Control	●	●	●
Permanent four-wheel drive	●	●	●
All wheel steering	●	●	●
Three steering way	●	●	●
Standard tyres	500/70R24	500/70R24	500/70R24
OPT tyres	500/70-24; 600/55-26.5: 440/80-R24	500/70-24; 600/55-26.5: 440/80-R24	500/70-24; 600/55-26.5: 440/80-R24
Hydraulically controlled stabilizers	-	-	-
Turret rotation	-	-	-
Tractor type approval	○	○	○
Pneumatic brakes (ton)	○	○	○
Hydraulic brakes (ton)	○	○	○
PTO	-	-	-
3-point rear linkage	-	-	-

●	-	●	500/70R24	500/70-24; 600/55-26.5: 440/80-R24	-	-	○	○	○	-	-
---	---	---	-----------	------------------------------------	---	---	---	---	---	---	---

-	●	-	500/70R24	500/70-24; 600/55-26.5: 440/80-R24	-	-	○	○	○	-	-
---	---	---	-----------	------------------------------------	---	---	---	---	---	---	---

●	●	-	500/70R24	500/70-24; 600/55-26.5: 440/80-R24	-	-	○	○	○	-	-
---	---	---	-----------	------------------------------------	---	---	---	---	---	---	---



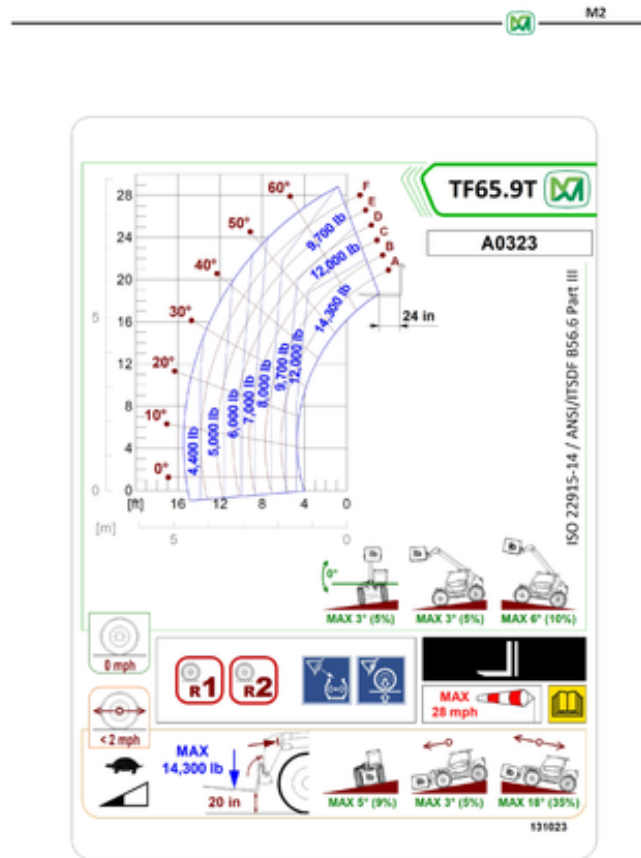
- not available
- standard
- optional

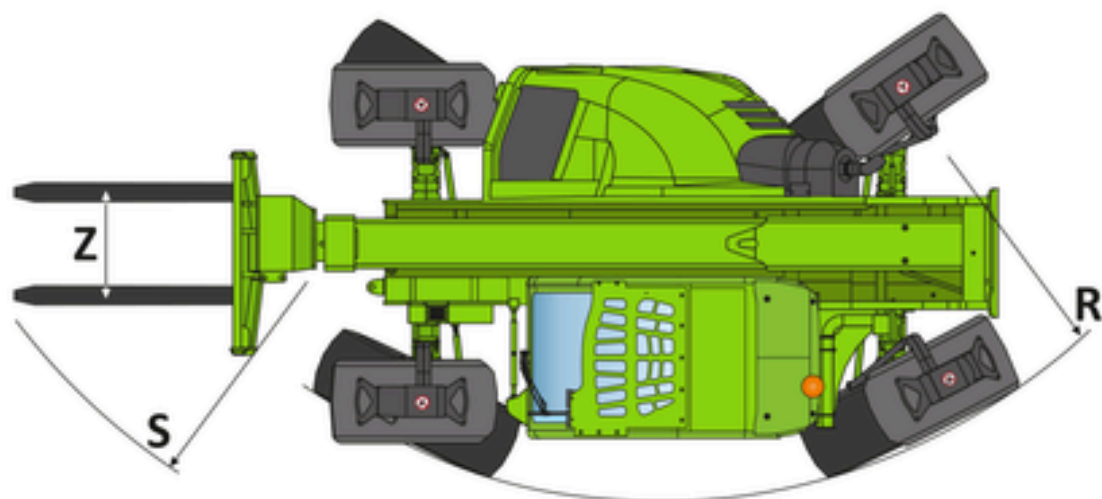
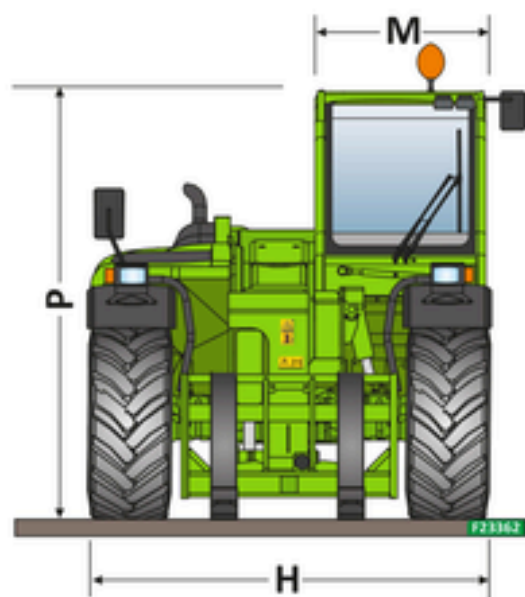
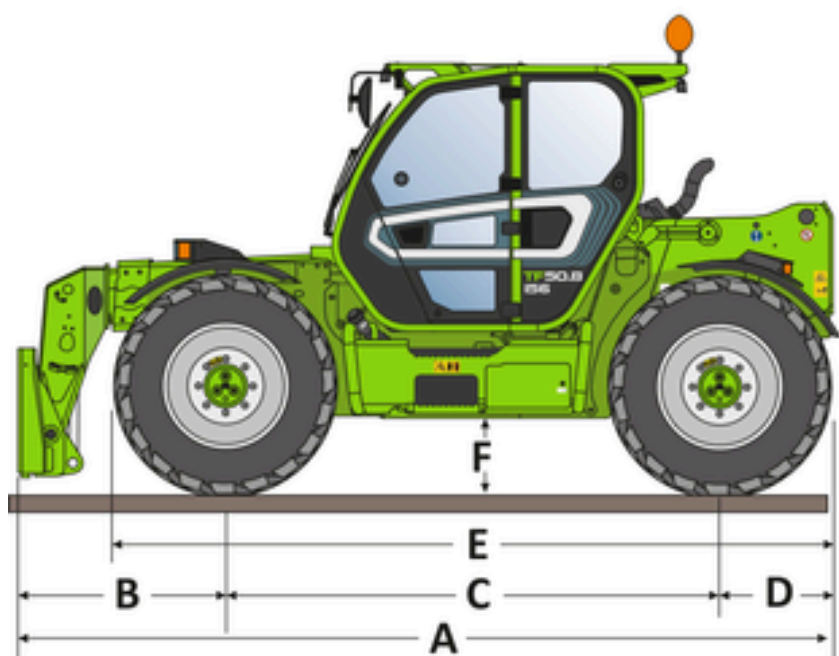
Dimensions



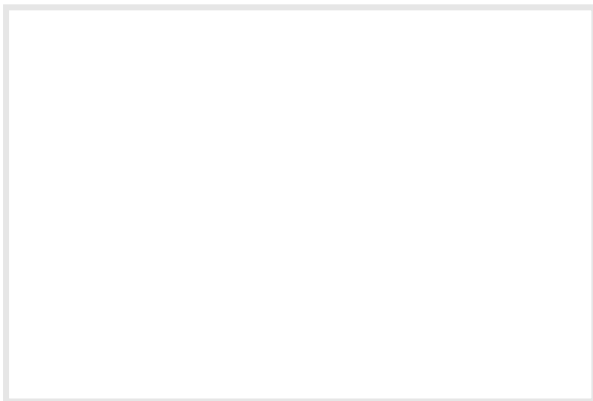
	TF65.9TCS-170-HF	TF65.9T-170-HF	TF65.9TCS-170-CVTRONIC-HF
A - Length	207	207	207
C - Wheelbase	120	120	120
F - Ground clearance	17	17	17
H - Width	94	94	94
M - Cabin width	40	40	40
P - Height	99	99	99
R - Turning radius at wheels	180	180	180
S - Turning radius at forks	210	210	210

Technical Details





Your Merlo dealer



MERLO S.P.A.

Via Nazionale, 9
12010 S. Defendente di Cervasca,
(Cuneo) Italia
Tel. +39 0171 614111

info@merlo.com
www.merlo.com

 **MERLO**