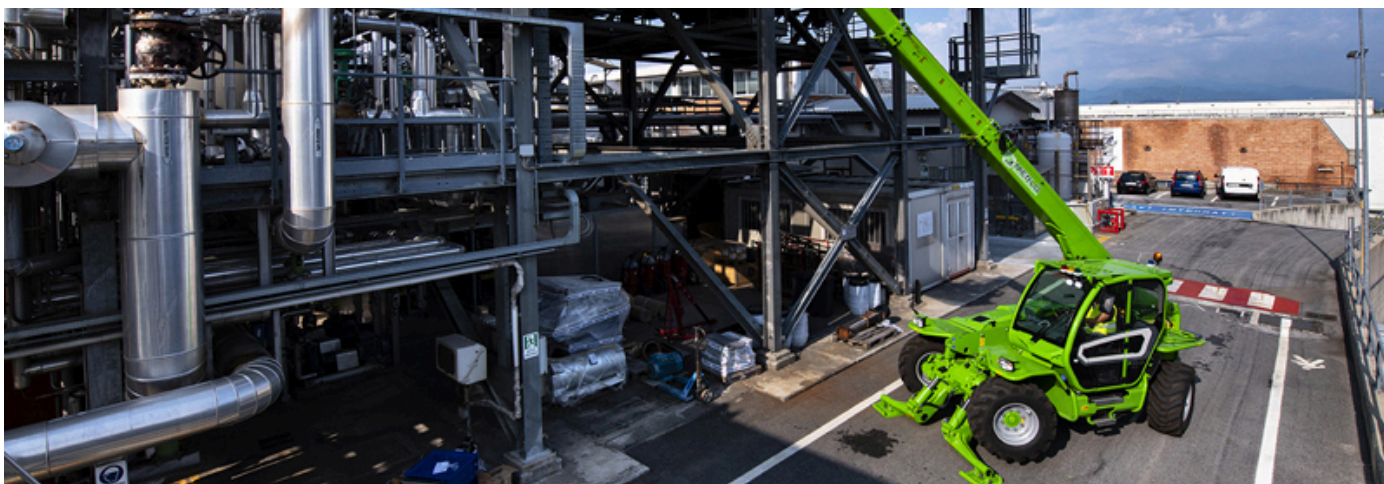


Stabilized telehandlers

Regulatory area: NA

P40.13





Comfort: The best workplace



Exclusive comfort

An unprecedented design guarantees maximum functionality and comfort; grouping the information provided to the driver and the controls of the various systems and devices for optimal ergonomics. The reverse shuttle on the steering wheel is also present on the joystick.

Cab entry

To ensure simple and easy access to the cab, the door of Merlo telehandlers can be opened by up to 180°. In addition, the inside of the door is equipped with a large handrail to help the operator when getting inside and outside of the cab.

Air-conditioning

Developed according to automotive standards, cutting the warm-up and cool-down times in half compared to a conventional air conditioning system. The inlet vent is placed on the side of the cab, away from potential sources of dust and dirt, while inside there are 8 vents.

Efficiency: Simpler and smarter



Transmission

In order to ensure a reduction in consumption and operating costs, Merlo telescopic handlers boast full electronic management of the transmission and engine, in order to minimise RPM and, consequently, fuel demand.

Steering Modes

The axles ensure the maximum steering angle to perform manoeuvres in tight spaces. Additionally, the operator can manage the steering of the machine with three different options according to the specific needs of the job.

Visibility

Merlo's improved visibility increases range of movement and safety for operators.

Performance: Everything at your fingertips



Transmission

The Merlo telehandlers have excellent braking capacity when the accelerator pedal is released, guaranteeing high torque to the wheels during material handling and transfers, as well as millimetric precision of movements when positioning the load.

Engines

All models feature a combustion engine in an original Merlo mounting layout, developed by Merlo with the invention of the panoramic visibility models, ensuring maximum accessibility to components in case of programmed and/or extraordinary maintenance.

Axles

The exclusively designed axles are manufactured and developed in-house by Merlo, and can be equipped with differential lock to ensure traction on any terrain, regardless of how unstable.

Safety: Not just feelings



Active safety

In order to remain fully compliant with regulations in frontal tipping prevention, Merlo handlers are equipped with features developed specifically to keep the operator safe from frontal tipping, without sacrificing performance, particularly of boom speed and lifting capacity.

Aerial work platform

The Merlo telehandlers can be configured with aerial work platform. This solution, complying with EN280 standard, assures an increased level of active and passive safety during work at heights, and enhances machine versatility.

Certified cab

All Merlo telehandlers have a metal structure above the glass roof on the outside of the cab to comply fully with FOPS Level II standard, the most stringent certification level in protecting the operator from falling objects.



1 - ASCS	The ASCS safety system: the ideal assistant! The system adjusts the speed and maximum extent of the movements based on the attachments in use, the load being handled and its position, thus eliminating the risk of overturning. Standard on the entire range with LS hydraulic system.
2 - EPD ECO POWER DRIVE	Maximum savings and efficiency! The Merlo-patented EPD system electronically controls engine and transmission. It manages engine speed, hydrostatic pump flow rate, and hydrostatic drive displacement, maximising efficiency and reducing RPM, saving up to 18% in fuel consumption.
3 - STABILISERS REMAINING WITHIN MACHINE SIZE	Stabilising the machine is essential for safe working. Stabilisers remaining in the outline of the machine allow stabilisation even in the tightest spaces, while also ensuring excellent visibility when travelling. Standard on the entire range of Stabilised telehandlers.
4 - BOOM SIDE-SHIFT	Having to reposition the machine, especially after it has already been stabilised, can be a waste of time. Thanks to the boom side-shift, you can pick up or place the load precisely, without any further manoeuvring, for maximum productivity. Standard on the Stabilised, Medium Capacity range in the TT and Panoramic High Capacity models.



PERFORMANCE AND FEATURES	P40.13EE4	P40.13PLUS
Performance		
Unladen weight (lb)	20503	20503
Maximum load capacity (lb)	8800	8800
Lift height (ft)	41' 0"	41' 0"
Maximum reach (ft)	28' 7"	28' 7"
Lift height at max. load capacity (ft)	35' 0"	35' 0"
Reach at max. load capacity (ft)	11' 0"	11' 0"
Load capacity at max. lift height (ft)	8000	8000
Load capacity at max. reach (lb)	2100	2100
Boom side-shift (mm)	+/- 13,4	+/- 13,4
Frame levelling (%)	+/- 8	+/- 8
Boom section	3	3
Powertrain		
Engine	Kohler KDI 2504	Perkins 904J
Range/Cylinders	2500/4	3600/4
Engine power (kW/HP)	55,4/75,1	85,9/115
Anti-pollution technology	Tier 4 - DOC	Tier 4
Reversible Fan	●	●
Maximum speed (mph)	20.5	25
Fuel tank capacity (gal)	37	37
AdBlue tank capacity (gal)	-	4.8
Hydrostatic transmission	●	●
EPD	STD	Plus
Electronic joystick	STD	STD
Axles	A portale	A portale
Reducers	RR 700	RR700
Brakes	Dry discs	Dry discs
Automatic parking brake	●	●
Hydraulic		
Hydraulic pump	LS	LS
Delivery / pressure (bar-l/min)	27,5 - 3626	27,5 - 3626
Hydraulic oil tank capacity (gal)	26.4	26.4
Auxiliary hydraulic service on boom	●	●
Rear service line	○	○
Cab		
Cab finishing	ECO	ECO
ASCS	Light	Completo
FOPS II Cab	●	●
ROPS Cab	●	●
Controls	Electronic joystick control	Electronic joystick control
Tilting cab	-	-
Reverse shuttle	Dual reverse	Dual reverse
Configuration		
Hydropneumatic Suspension CS Merlo	—	—
Hydropneumatic Suspension BSS Merlo	○	○
Hydropneumatic Suspension EAS Merlo	—	—
Work lights on cab	○	○
Sun-shade in the cab	○	○
Tac-lock	●	●
Pre-arrangement for aerial work platform	○	○
Two floating forks	●	●
Pedal Inching-Control	●	●
Permanent four-wheel drive	●	●
All wheel steering	●	●
Three steering way	●	●
Standard tyres	400/70-20	400/70-20
OPT tyres	400/70-24	400/70-24
Hydraulically controlled stabilizers	In sagoma	In sagoma
Turret rotation	—	—
Tractor type approval	-	-
Pneumatic brakes (ton)	-	-
Hydraulic brakes (ton)	-	-
PTO	-	-
3-point rear linkage	-	-

— not available
● standard
○ optional

Dimensions

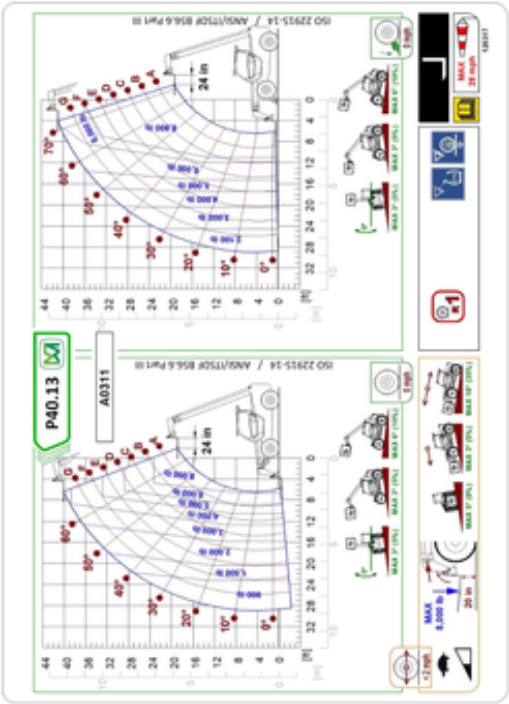


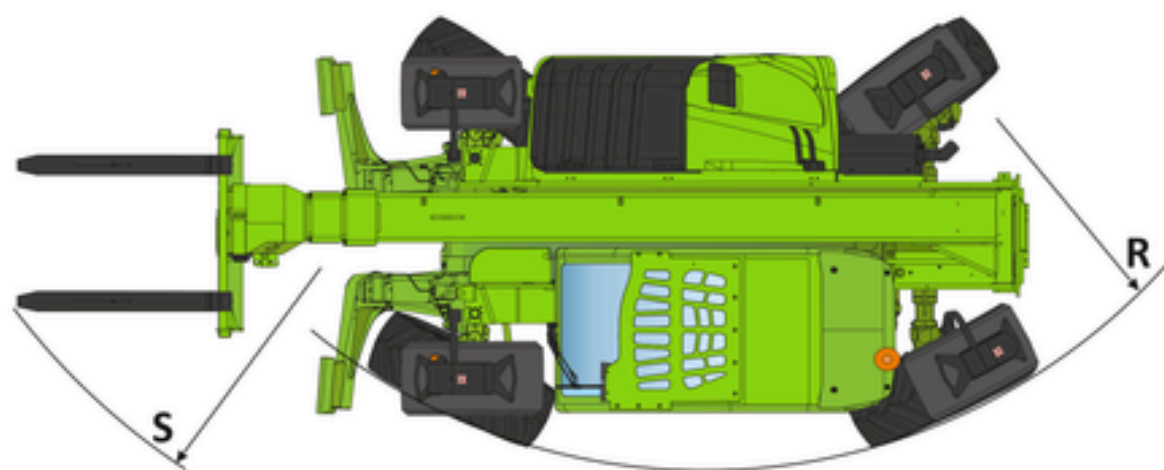
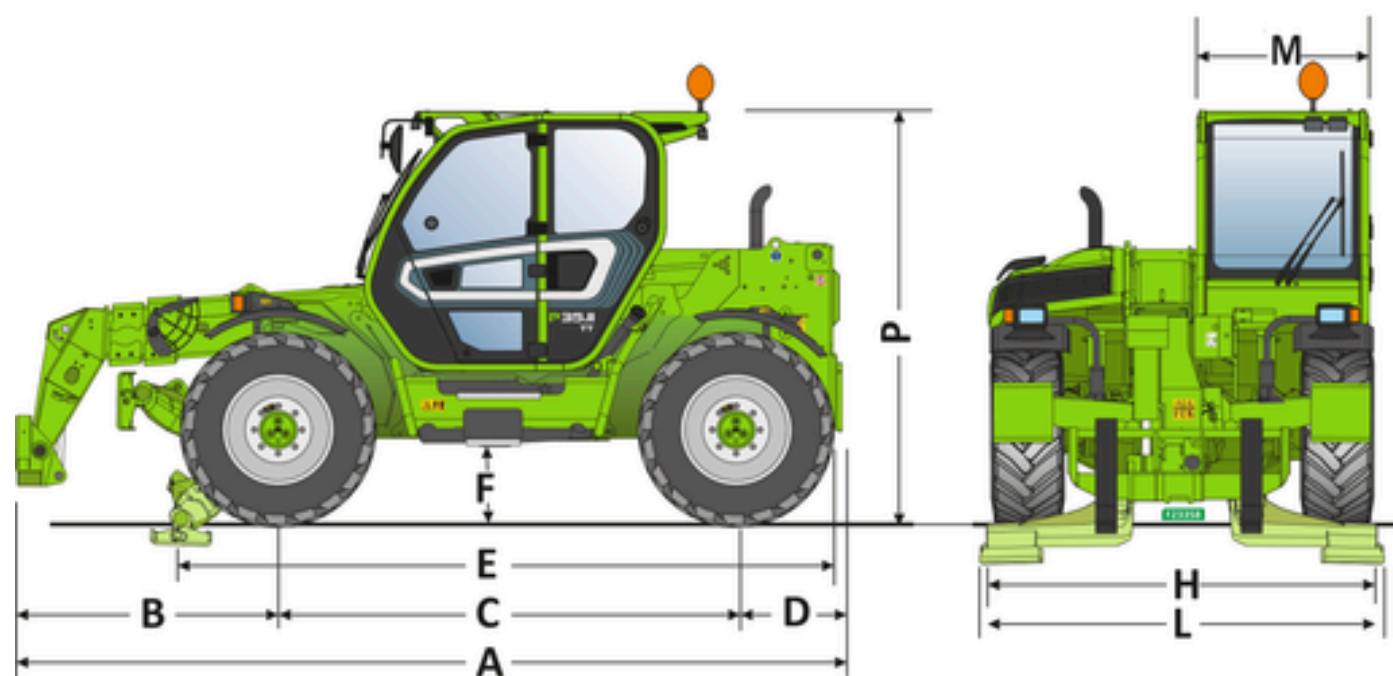
	P40.13EE4	P40.13PLUS
A - Lenght	213	213
C - Wheelbase	111	111
F - Ground clearance	15	15
H - Width	88	88
M - Cabin width	40	40
P - Height	95	95
R - Turning radius at wheels	154	154
S - Turning radius at forks	194	194

Technical Details

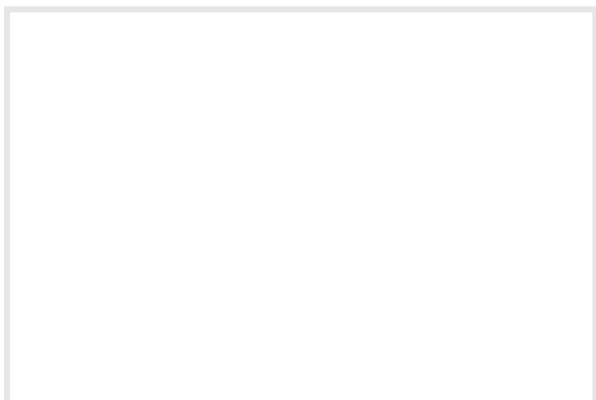


M2





Your Merlo dealer



MERLO S.P.A.

Via Nazionale, 9
12010 S. Defendente di Cervasca,
(Cuneo) Italia
Tel. +39 0171 614111

info@merlo.com
www.merlo.com

