

# PAVILION



The Victoria Hospital layout was based on the "pavilion principle." Image from 1910, Celebrate South Street Hospital.



- Referencing the original "pavilion" hospital the design is laid out in zones.
- Shade pavilions are inspired by the sleeping porches originally used for healing at Victoria Hospital.
- The bosque zone provides shade and moveable seating.
- Interpretive signage is etched into the walls displaying the history of the hospital and neighbourhood.

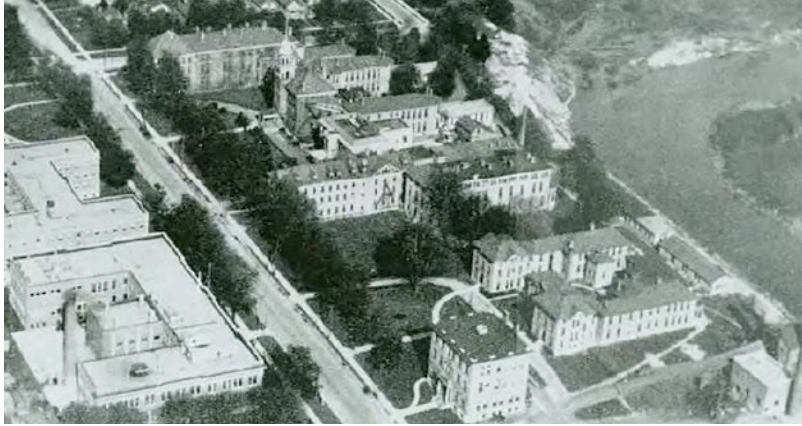


Image circa 1930, Cultural Heritage Assessment, Museum of London.



Market: 3m x 3m stalls



Yoga: 25 people



Concert: ~250 people



View looking north from South St.



View looking west from South St. and Colborne St.

