

Green Line S.E. | Land Policy Plan

Millican-Ogden April 26, 2016 Public Open House Comments Summary

In 2015, an extensive public engagement process was carried out for the the Green Line S.E. . Three design charrettes were conducted as part of the transit-oriented development (TOD) study, with one focusing on the Lynnwood/Millican and Ogden station areas. Using the vision created in the charrette process, an area redevelopment plan (ARP) is being developed for the Millican-Ogden area. The ARP will guide future development initiatives in this area.

The second public open house for the ARP development was held on April 26, 2016. This report provides a summary of the feedback received.



106
people attended
the open house



39
questionnaires
were completed



69%
of respondents (29)
live or work in the area

Next Steps

- The project team will use public feedback to create a draft ARP for Millican-Ogden.
- The draft ARP will be on display for viewing and comments at the next open house on June 22.

Banting & Best School Gym
1819 – 66 Ave S.E.
5:00 – 8:00 p.m.

What did people say?

Do you agree with the vision and objectives for the plan? Why or why not?

Land use: good for businesses; good mix of housing types; fits into neighbourhood context; Ogden is in need of updating; too much change to the area; unclear where affordable housing is located

Green Line and station location: overall support for Green Line; suggested adjustments to the alignment; convenient station location

Parking: concerns about parking for LRT users; requesting information about parking permits

Transportation: concerns about traffic and buses that will access the station

Miscellaneous: the plan appears to be completed at this point; questions from previous engagement have not been addressed

21
people said YES

7
people said NO

Are there any specific issues that you would like to see addressed in the plan that weren't mentioned in the boards you viewed?

Land use: conversion of old Lynnwood refinery into park/open space; identify seniors and affordable housing; concern about contaminated land

Parking: need designated parking for LRT users

Pedestrians/bikes: need more information on connectivity for bikes & pedestrians; requests for separated bike lanes; consider underground access for safer pedestrian traffic

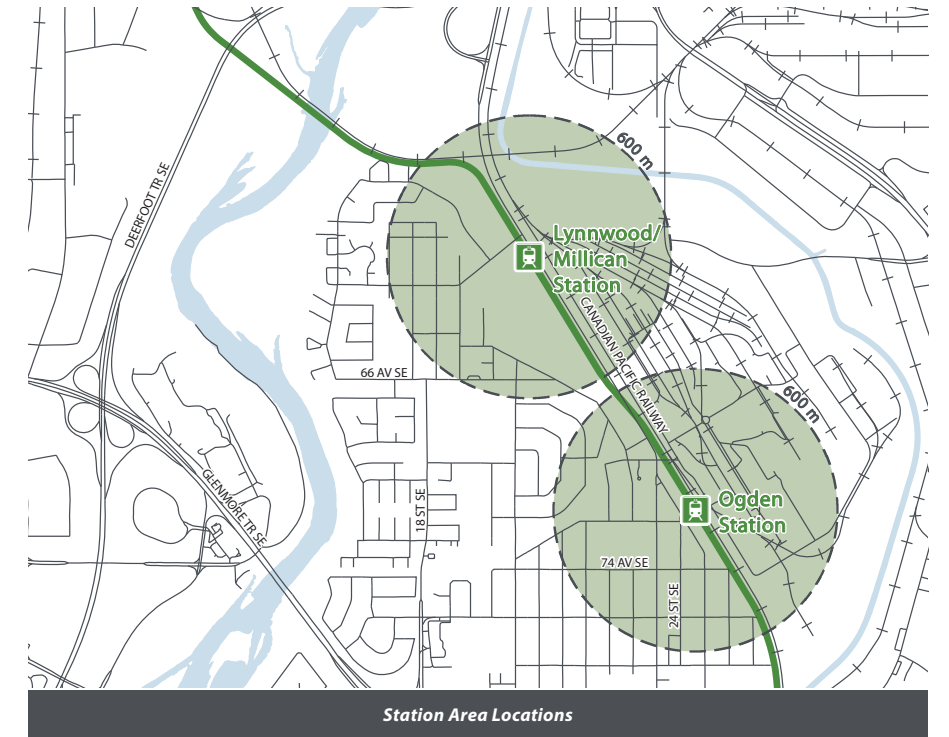
Traffic: concerns about added traffic

Would you like to see Oggie Ogden incorporated into one of the station designs?

- Uncertain what this is
- Supportive comments and suggestions for a "re-imagined" Oggie
- Suggestions for location

17
people said YES

5
people said NO



Established Areas Guidebook

From a community perspective, what are your top 3 priorities for building a great neighbourhood?

#1
Build better transit
facilities and service
(17 people)

#2
Foster complete
communities
(15 people)

#3
Build on bicycling and
walking infrastructure
(14 people)

What do you like/not like about the land use concept for your community?

Parking: need designated parking for LRT users

Traffic flow: concerned about increased traffic

Miscellaneous: request timeline for redevelopment; request for more engagement; support of the Green Line and the land use planning, concern about high cost; concern over increasing density