



HM50R V2.0

HIGH-PERFORMANCE DUAL-PURPOSE HEADLAMP



700 LUMENS MAXIMUM
OUTPUT



42 HOURS RUNTIME

SAFE USE WARNINGS

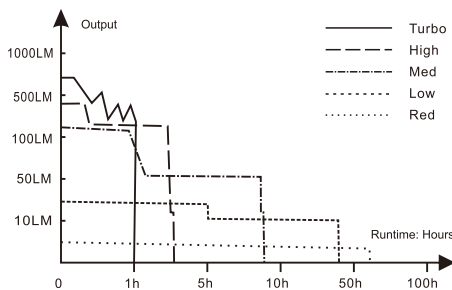
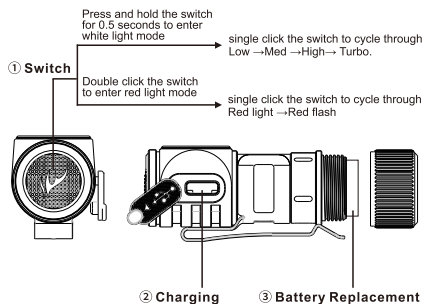
- Do place this light out of the reach of children!
- Do NOT shine the light directly into the eyes of anyone!
- Do NOT shine flammable objects at close range, to avoid burning objects or causing danger due to high temperature!
- Do NOT use the light in inappropriate ways such as biting in the mouth, to avoid personal injury or life threats when the light or internal battery fails!
- This light will accumulate a lot of heat while working, resulting in a high temperature of the flashlight shell. Pay attention to safe use to avoid scalding.
- Turn off and lock the light or remove the battery from the light to prevent accidental activation when the light is placed in a closed and flammable environment such as pockets and backpacks!
- The LED of this flashlight is not replaceable, so the whole light should be replaced when the LED reaches the end of its life.

(ENGLISH)FENIX HM50R V2.0 HEADLAMP

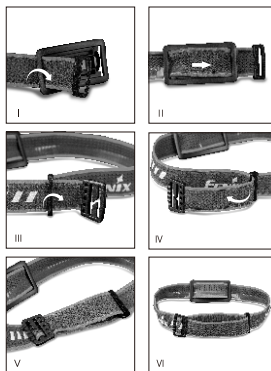
- 700 lumens maximum output, 115 meters maximum beam distance.
- Luminus SST20 white light LED with a lifespan of 50,000 hours.
- Included a 16340 rechargeable Li-Ion battery.
- Detachable structure - can be used as a flashlight.
- White and red lights.
- USB Type-C charging port for easy and fast charging.
- Lockout function avoids accidental activation.
- Made of durable A6061-T6 aluminum.
- Premium type HAIII hard-anodized anti-abrasive finish.
- Size: 2.52" x 1.42" x 1.26" / 64 x 36 x 32 mm.
- Weight: 2.75 oz / 78 g (including battery and headband).

OPERATING INSTRUCTION

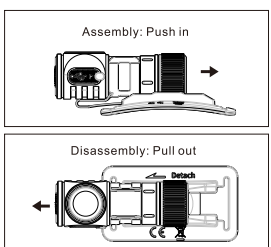
- On/off**
With the lamp switched off, press and hold the switch for 0.5 seconds to enter white light mode.
With the lamp switched off, double click the switch to enter red light mode.
With the lamp switched on, press and hold the switch for 0.5 seconds to turn off the lamp.
- Output Selection**
White light mode: single click the switch to cycle through Low → Med → High → Turbo. (with intelligent memory circuit)
Red light mode: single click the switch to cycle through Red light → Red flash (without intelligent memory circuit)
- Lockout Function**
Lock: when the lamp is switched off, press and hold the switch for 3 seconds, the lamp will be switched on white light and then blink red four times to indicate locked status.
Unlock: when the lamp is locked, press the switch for 3 seconds, the lamp will be activated with 4 one-second red blinks and activated on Red Light.



④ Headband Assembly



⑤ Holder Assembly



TECHNICAL PARAMETERS

ANSI/PLATO FL1	WHITE LIGHT				RED LIGHT	
	TURBO	HIGH	MED	LOW	RED	RED FLASH
OUTPUT	700 lumens	400 lumens	130 lumens	30 lumens	5 lumens	5 lumens
RUNTIME	1 hour*	3 hours	8 hours	42 hours	60 hours	120 hours
DISTANCE	115 meters	86 meters	49 meters	23 meters	6 meters	6 meters
INTENSITY	3350 candela	1849 candela	596 candela	128 candela	9 candela	9 candela
IMPACT RESISTANCE	2 meters					
SUBMERSIBLE	IP68					

*Note: According to the ANSI/PLATO FL1 standard, the above specifications are from the results produced by Fenix through its laboratory testing using one Fenix ARB-L16-700P Li-Ion battery under the temperature of 21±3°C and humidity of 50% - 80%. The real performance of this product may vary according to different working environments and the actual battery used. *The Turbo output is measured in a total of runtime including output at reduced levels due to temperature or protection mechanism in the design.

BATTERY SPECIFICATIONS

Type	Dimensions	Nominal Voltage	Usability
Fenix ARB-L16 Series Rechargeable Battery (Li-Ion)	16340	3.6/3.7V	Recommended
Non-rechargeable Battery (LiFePO4)	16340	3.2V	Usable
Non-rechargeable Battery (Lithium)	CR123A	3V	Caution

Warning: *16340 Li-Ion batteries are powerful cells designed for commercial applications and must be treated with caution and handled with care. Only use quality batteries with circuit protection which will reduce the potential for combustion or explosion; but cell damage or short circuiting are potential risks the user assumes. *High mode can't be entered when using the CR123A battery.

BATTERY REPLACEMENT

Unscrew the cap to insert the battery in accordance with the polarity marks, then screw the cap back on.

CHARGING

Uncover the cap and plug the USB Type-C side of the charging cable into

- the charging port of the lamp.
- The indicator will display red while charging and will turn green when fully charged.
 - The normal charging time of the included Fenix ARB-L16-700P 16340 rechargeable Li-Ion battery is about 1.5 hours.
 - When charging, the headlamp can be normally used on Low, Red, Red flash, but charging time will be prolonged.
 - When charging is complete, replace the anti-dust cap to ensure waterproof and dustproof ability.
 - Recharge a stored headlamp every four months to maintain optimal Li-Ion battery performance.
 - Charging protection: when charging, if the lamp reaches a temperature of 60°C or above, the lamp will automatically exit charging status and enter sleeping mode.

BATTERY LEVEL INDICATION

With the lamp switched off, single click the switch to check the battery status, the indicator will last for 3 seconds.
Green light on: saturated 100% - 80%
Green light flashes: sufficient 80% - 50%
Red light on: poor 50% - 20%
Red light flashes: critical 20% - 0%
Note: This only works with Fenix ARB-L16-700P battery.

INTELLIGENT OVERHEAT PROTECTION

The lamp will accumulate a lot of heat when used at Turbo mode for extended periods. When the lamp reaches a temperature of 60°C or above, the lamp will automatically step down a few lumens to reduce the temperature. When the temperature drops below 60°C, it will then allow the user for the reselection of Turbo mode.



FACEBOOK



WECHAT

"Follow" us for more information about Fenix.

FENIXLIGHT LIMITED

Tel: +86-755-29631163/83/93 Fax: +86-755-29631181
E-mail: Info@fenixlight.com Web: www.fenixlight.com
Address: 2F/3F, West of Building A, Xinghong Technology Park, 111 ShuiKu Road, Fenghuangang Community, Xixiang Street, Bao'an District, Shenzhen City, Guangdong Province, China



61.149.221.118-A0-20240521

LOW-VOLTAGE WARNING

When the voltage level drops below the preset level, the headlamp is programmed to downshift to a lower brightness level until Low mode is reached. When this happens in Low mode, the battery level indicator blinks to remind you to timely recharge or replace the battery.
Note: This only works with Fenix ARB-L16-700P battery.

HEADBAND ASSEMBLY

- The headband is factory assembled by default.
- The headband bracket is made of reinforced silicone material, which has good tear resistance and mechanical strength; it is resistant to low/high temperature, ultraviolet rays, acid and alkali corrosion; it is comfortable to the touch and will not cause corrosion allergy.
- If the headband is stained with sweat and mud, it can be washed directly.

OTHER PURPOSE

Detach the headlamp from the holder it can be used as a work flashlight.

USAGE AND MAINTENANCE

- Disassembling the sealed head can cause damage to the lamp and will void the warranty.
- Fenix recommends using an excellent quality Fenix battery.
- If the lamp will not be used for an extended period, remove the battery or the lamp could be damaged by electrolyte leakage.
- Lock the lamp or take out the battery to prevent accidental activation during storage or transportation.
- Long-term use can result in O-ring wear. To maintain a proper water seal, replace the ring with an approved spare.
- Periodic cleaning of the battery contacts improves the lamp's performance as dirty contacts may cause the lamp to flicker, shine intermittently or even fail to illuminate for the following reasons:
A. The battery needs replacing.
Solution: Replace the battery (Ensure the battery is inserted according to the manufacturer's specifications).
B. The contact point or contact of the battery or headlamp is dirty.
Solution: Clean the contact points with a cotton swab soaked in rubbing alcohol. If the above methods don't work, please contact the distributor.

INCLUDED

Fenix HM50R V2.0 headlamp, ARB-L16-700P Li-Ion battery, USB Type-C charging cable, Spare O-ring, User manual, Warranty card.