

FENIX
LIGHTING FOR EXTREMES



BC06R

**SMART BRAKE SENSING
BICYCLE TAILLIGHT**



90 LUMENS MAX OUTPUT



24.5 HOURS MAX RUNTIME

WARNING

- The taillight is a high-intensity lighting device capable of causing eye damage to the user or others. Avoid shining the light directly into anyone's eyes.
- The LED of this light is not replaceable; so the light will need to be replaced when the LED reaches the end of its lifespan.
- If any of the information provided in this manual is changed, the new version of the manual shall prevail; if your included user manual is an old one, it acquiesces that we won't send a new manual.

(ENGLISH) FENIX BC06R BICYCLE TAILLIGHT

- Smart brake sensing function.
- The output of Braking is 90 Lumens and the alerting distance is 100 meters.
- Can be mounted on saddle rails or seatposts.
- Quick-release structure for fast assembly and disassembly.
- Built-in 560mAh battery.
- USB Type-C charging.
- 270° lighting angle.
- Ultra-compact and fashionable appearance; multiple lighting modes for option.
- Battery level indication.
- Easy and fast operation with a single switch.
- Size: 1,50" x 1,50" x 1,50"/38 x 38 x 38 mm(excluding mount).
- Weight: 1,57 oz/44,5 g(including battery)

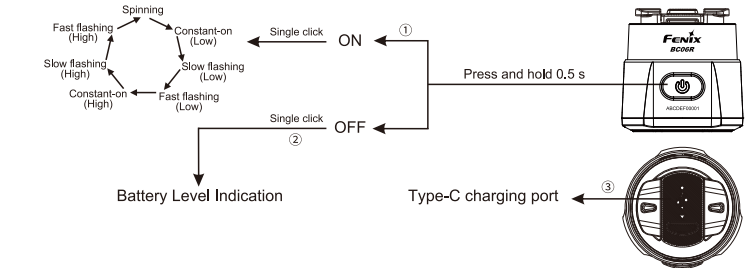
OPERATING INSTRUCTIONS

On/off
Press and hold the switch for 0,5 seconds to turn/off the light.

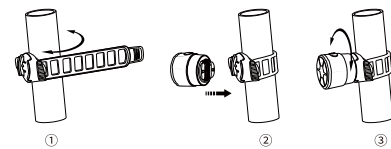
Output Selection
With the light switched on, single click the switch to cycle through (Low)Constant-on→(Low)Slow flashing→(Low)Fast flashing→(High)Constant-on→(High)Slow flashing→(High)Fast flashing→Spinning.

Mode switching
With the light switched on, a sudden reduction in riding speed will automatically trigger the Braking mode. After two seconds, the light will automatically recall the previously used output.

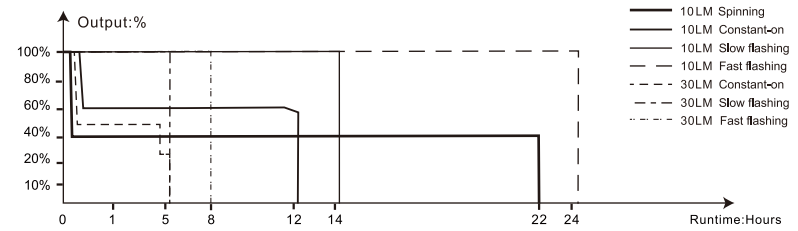
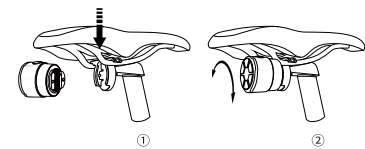
Intelligent Memory Circuit
The light memorizes the last selected output excluding Braking. When turned on again, the previously used output will be recalled.



Seatpost mounting:



Saddle rails mounting:



WARNING

- The taillight is a high-intensity lighting device capable of causing eye damage to the user or others. Avoid shining the light directly into anyone's eyes.
- The LED of this light is not replaceable; so the light will need to be replaced when the LED reaches the end of its lifespan.
- If any of the information provided in this manual is changed, the new version of the manual shall prevail; if your included user manual is an old one, it acquiesces that we won't send a new manual.

(ENGLISH) FENIX BC06R BICYCLE TAILLIGHT

- Smart brake sensing function.
- The output of Braking is 90 Lumens and the alerting distance is 100 meters.
- Can be mounted on saddle rails or seatposts.
- Quick-release structure for fast assembly and disassembly.
- Built-in 560mAh battery.
- USB Type-C charging.
- 270° lighting angle.
- Ultra-compact and fashionable appearance; multiple lighting modes for option.
- Battery level indication.
- Easy and fast operation with a single switch.
- Size: 1,50" x 1,50" x 1,50"/38 x 38 x 38 mm(excluding mount).
- Weight: 1,57 oz/44,5 g(including battery)

OPERATING INSTRUCTIONS

On/off
Press and hold the switch for 0,5 seconds to turn/off the light.

Output Selection
With the light switched on, single click the switch to cycle through (Low)Constant-on→(Low)Slow flashing→(Low)Fast flashing→(High)Constant-on→(High)Slow flashing→(High)Fast flashing→Spinning.

Mode switching
With the light switched on, a sudden reduction in riding speed will automatically trigger the Braking mode. After two seconds, the light will automatically recall the previously used output.

Intelligent Memory Circuit
The light memorizes the last selected output excluding Braking. When turned on again, the previously used output will be recalled.

TECHNICAL PARAMETERS

	SPINNING	LOW				HIGH			BRAKING
		CONSTANT-ON	SLOW FLASHING	FAST FLASHING	CONSTANT-ON	SLOW FLASHING	FAST FLASHING		
☀️ OUTPUT	10 Lumens	10 Lumens	10 Lumens	10 Lumens	30 Lumens	30 Lumens	30 Lumens	90 Lumens	
⌚ RUNTIME	22 hours	12 hours 30 minutes	14 hours 30 minutes	24 hours 30 minutes	5 hours 30 minutes	5 hours 30 minutes	8 hours	/	
🔦 INTENSITY	5 candela	5 candela	5 candela	5 candela	15 candela	15 candela	15 candela	30 candela	
⚠️ ALERTING DISTANCE	100 meters								
📐 LIGHTING ANGLE	270°								
📏 IMPACT RESISTANCE	1.5 meters								
🌧️ WATERPROOF	IP66								

Note: the above specifications are from the results produced by Fenix through its laboratory testing using one built-in 560 mAh battery under the temperature of 21±3°C and humidity of 50% - 90%. The true performance of this product may vary according to different working environments.

CHARGING

1. Turn off the light, open the anti-dust cover to reveal the USB Type-C charging port, and connect the USB Type-C socket of the charging cable to the light.
2. The indicator will display red while charging and will turn green when fully charged.
3. Once charging is completed, be sure to close the anti-dust cover to maintain the dustproof and waterproof ability.

Note:
1. The normal charging time of the light is approximately 2 hours from depleted to fully charged.
2. Recharge a stored light every four months to maintain optimum performance of the battery.
3. The Constant-on output of Low mode can be operated while charging but the charging time will be prolonged.

BATTERY LEVEL INDICATION

Each time the light is turned on, the indicator will indicate the battery

level and will last for 3 seconds. With the light switched off, single click the switch to check the battery status, the indicator will last for 3 seconds.
Green light on: saturated 100% - 85%
Green light flashes: sufficient 85% - 50%
Red light on: poor 50% - 25%
Red light flashes: critical 25% - 1%

LOW VOLTAGE WARNING

When the voltage level drops below 3.0V, the light is programmed to downshift to a lower brightness level. The battery level indicator blinks red at 3Hz to remind you to recharge the battery. To ensure normal use, the light will not turn off automatically and will work till the battery level runs out.

MOUNTING INSTRUCTIONS

Seatpost mount:
First loop the mounting strap (without LOGO) around one of the attachment ear of the seatpost mount, and place the seatpost

LIGHTING FOR EXTREMES

FACEBOOK WECHAT
"Follow" us for more information about Fenix.

FENIXLIGHT LIMITED
Tel: +86-755-29631163/83/93 Fax: +86-755-29631181
E-mail: info@fenixlight.com Web: www.fenixlight.com
Address: 2F/3F, West of Building A, Xinghong Technology Park, 111 Shuku Road, Fenghuanggang Community, Xixiang Street, Bao'an District, Shenzhen City, Guangdong Province, China

61.122.091.039-A0-20240904

mount (silicone pad thinner side face up) on the seatpost, then loop the other end of the mounting strap (with LOGO) around the other attachment ear of the seatpost mount, adjust as the size of the seatpost. Finally, attach the BC06R taillight to the seatpost mount with the switch facing upwards.

Note: This taillight is applicable to bike seatpost diameters between 25,4mm - 31,6mm.

Saddle rail mount:
Place the saddle rail mount on the saddle rails of the bike. Thread a zip tie through the top hole on one side of the mount, and tie the corresponding saddle rail and the saddle mount together. Repeat the same process for the other side. Trim any excess parts of the zip ties. Attach the BC06R taillight to the saddle rail mount with the switch facing upwards.

Note: This taillight is applicable to bike saddle rails distance between 39,0mm - 50,0mm.

USAGE AND MAINTENANCE

- Disassembling the sealed head can cause damage to the light and will void the warranty.
- Recharge the battery in time to ensure normal use for next time.
- Recharge a stored light every four months to maintain optimum performance of the battery.
- The lamp may flicker, shine intermittently or even fail to illuminate for the following reason:
Poor battery level.
Solution: Recharge the battery.

If this method doesn't work, please contact your authorized distributor.

INCLUDED

Fenix BC06R bicycle taillight, Saddle rail mount, Zip ties x 4, Seatpost mount, Mounting strap, USB Type-C charging cable, User manual, Warranty card.