

Self-fabric collar



Open sleeve

Curved double needle hemmed bottom with side vents

Ladies' Veronica Polo OGKSE048

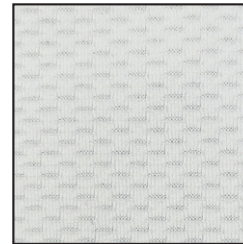
Product Features:

- 7.6-oz, 92/8 nylon/elastane stretch pique fabric
- 6-button placket
- Contrast embroidered Pete logo on left chest

Ladies' sizes: S-2XL



Closeup fabric



Available Colours and PMS Colours

Textile fabric colours are subject to dye lot variation and will not be exact match to print Pantone reference.

CAVIAR
BLACK



Black 6C

BRIGHT
WHITE



No PMS

BLACK IRIS
BLUE



303C

OGKSE048 - Original Penguin® Ladies' Veronica Polo

Garment Measurements

Size	S	M	L	XL	2XL
Numeric Size	4-6	8-10	12-14	16-18	20-22
Chest - Half Measure	18"-19"	19"-20"	20"-21"	22"-23"	24"-25"
Chest - Full Measure	36"-38"	38"-40"	40"-42"	44"-46"	48"-50"
Body Length from HPS	25"-26"	25 1/2"-26 1/2"	26"-27"	27"-28"	28"-29"
Sleeve Length - CB	14 1/2"-15"	15"-15 1/2"	15 5/8"-16-1/8"	16 1/4"-16 3/4"	17"-17 1/2"

Finished measurements in inches. Refer to "How to Measure" guide for detailed information on measurement instructions.

Printing Instructions for Nylon Fabrics

Due to the nature of nylon, special care must be taken throughout the decoration process. Here are some tips to effectively decorate our performance products.

HEAT TRANSFER/SCREEN PRINTING

- Garment temperature must not exceed 310°F or 154°C.
- Use fast fashion/low cure temperature ink to help prevent the need for a higher temperature to cure the ink.

A test sample run is recommended, especially if you have a large order or if your printer does not specialize in printing on performance fabrics.