

# ATC™ YP CLASSICS®

## Retro Trucker Cap

### ATC6606

#### Product Features:

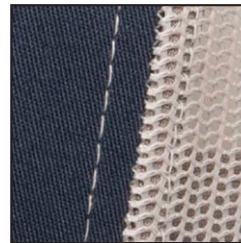
- Fabrication: 74/26 polyester/cotton
- Front panels: 60/40 cotton/polyester
- Mid and back panels: 100% polyester mesh
- 6-panel



Permacurv® visor

7-position adjustable snapback closure

Matching undervisor



## Available Colours and PMS Colours

Textile fabric colours are subject to dye lot variation and will not be exact match to print Pantone reference.



**BLACK/BLACK**  
Black 6C/Black 6C



**BLACK/WHITE**  
Black 6C/No PMS



**WHITE/WHITE**  
No PMS/No PMS



**CHARCOAL/BLACK**  
Cool Grey 11C/Black 6C



**CHARCOAL/CHARCOAL**  
Cool Grey 11C/  
Cool Grey 11C



**CHARCOAL/WHITE**  
Cool Grey 11C/  
No PMS



**HEATHER/BLACK**  
Cool Grey 9C/  
Black 6C



**HEATHER/WHITE**  
Cool Grey 9C/  
No PMS



**NAVY/NAVY**  
533C/533C



**NAVY/SILVER**  
533C/423C



**NAVY/WHITE**  
533C/No PMS



**ROYAL/WHITE**  
7687C/No PMS



**STEEL BLUE/SILVER**  
653C/423C



**RED/WHITE**  
200C/No PMS



**MAROON/GREY**  
7630C/Cool Grey 11C



**MULTICAM® BLACK\*/BLACK**  
No PMS/Black 6C



**MULTICAM®\*/BLACK**  
No PMS/Black 6C



**REALTREE EDGE®\*\*/BROWN**  
No PMS/2479C

\*98/2 polyester/polyurethane spandex \*\*96/4 polyester/polyurethane spandex

# ATC6606 - YP Classics® Retro Trucker Cap



COYOTE BROWN/  
BLACK  
2320C/Black 6C



BROWN/KHAKI  
7532C/7502C



CARAMEL/BLACK  
730C/Black 6C



MOSS/KHAKI  
7553C/7530C

## Hat Measurements

Size	OSFA
Total Interior Circumference	57 cm
Crown Height (seam to button)	17.4 cm
Bill Length (seam to bill edge)	6.9 cm
Front 2 panel Width	18.8 cm
Decoration Area - Front	2.25" H x 5" W (max size)

## Decoration Recommendations

### EMBROIDERY

Embroidery is recommended for this style

### HEAT TRANSFERS

Heat transfers / DTF is workable for this style. Check with transfer supplier for temperature and time recommendations for fabric content