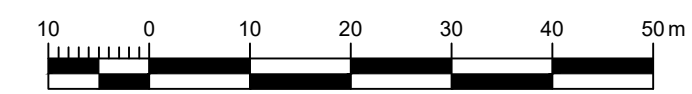
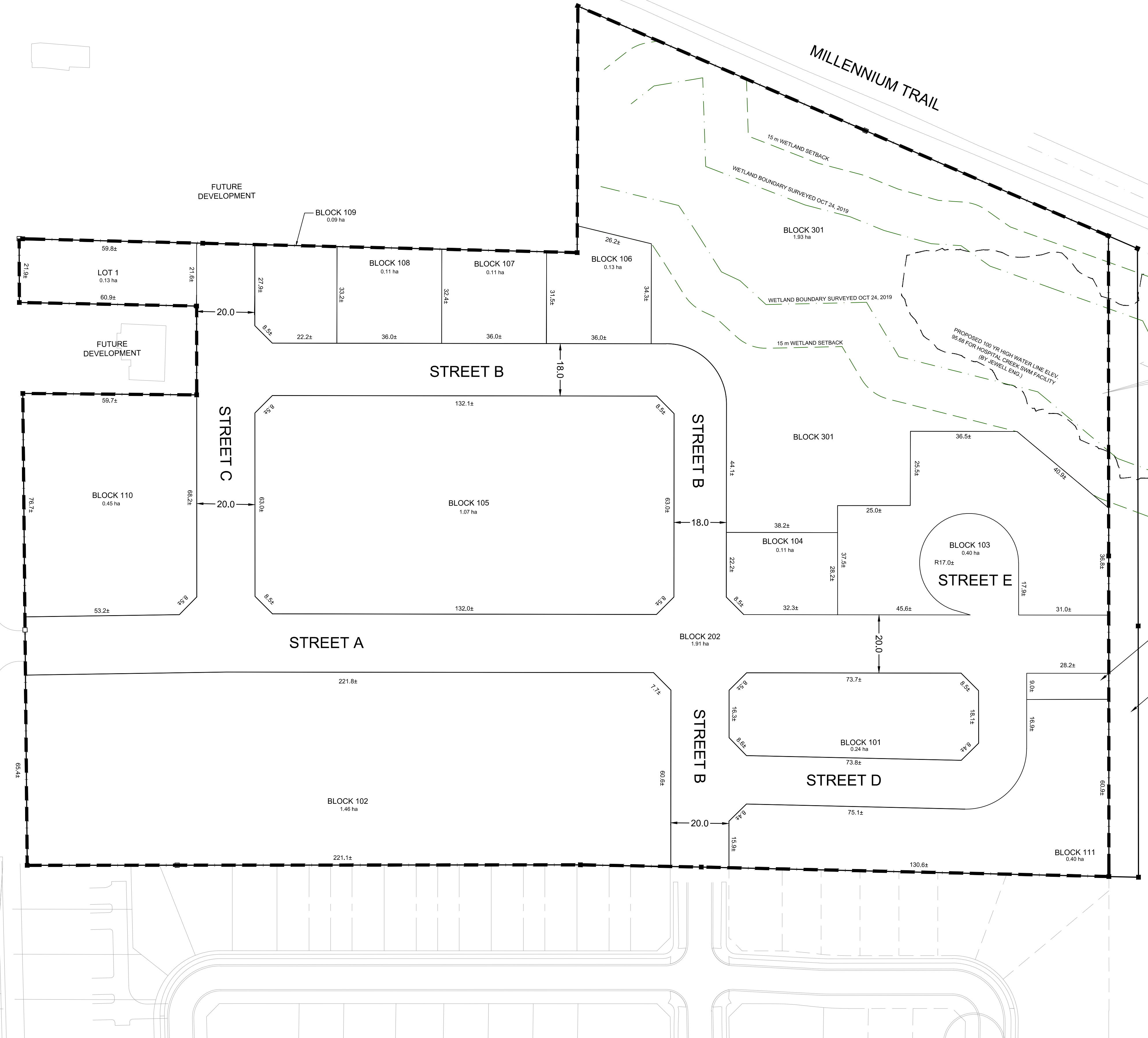


SITE LAND USE	AREA(ha)	AREA%
LOT 1 FREEHOLD SINGLE DETACHED LOT	0.13	1.5
BLOCK 101 - 111 - TOWNHOUSE BLOCKS	4.56	53.3
BLOCK 201 - 202 - INFRASTRUCTURE BLOCKS	1.93	22.5
BLOCK 301 - OPEN SPACE (WETLAND SETBACK TO MILLENNIUM TRAIL)	1.52	17.8
BLOCK 301 - PARKLAND (DEDICATION)	0.42	4.92
SITE TOTAL	8.56 ha	100.0%

DWG SIZE 24 x 36 1:750



TALBOT STREET



BLOCK 201 PUMPING STATION 0.02 ha

PART 2 OF REGISTERED PLAN 47R-8942 TO BE CONVEYED TO THE MUNICIPALITY

DOWNES AVE.

K:\Projects\19519-1 - Talbot on the Trail\Drawings\19519-Draft Plan.dwg 2020-12-11 1:37 PM

ADDITIONAL INFORMATION UNDER SECTION 51(17) OF THE PLANNING ACT.
 (a) SEE SURVEYOR'S CERTIFICATE.
 (b) AS SHOWN ON DRAFT PLAN.
 (c) AS SHOWN ON DRAFT PLAN.
 (d) SINGLE DETACHED RESIDENTIAL.
 (e) AS SHOWN ON DRAFT PLAN.
 (f) AS SHOWN ON DRAFT PLAN.
 (g) AS SHOWN ON DRAFT PLAN.
 (h) MUNICIPAL WATER AND SEWER.
 (i) SANDY LOAM OR CLAY LOAM WITH LIMESTONE SUBSTRATE.
 (j) AS SHOWN ON DRAFT PLAN.
 (k) GARBAGE COLLECTION, FIRE PROTECTION, ROAD MAINTENANCE, SCHOOL BUSES, ETC.
 (l) AS SHOWN ON DRAFT PLAN.

METRIC NOTE
 DISTANCES SHOWN ON THIS PLAN ARE IN METRES AND CAN BE CONVERTED TO FEET BY DIVIDING BY 0.3048.

CONTOUR DATA
 CONTOUR AND TOPOGRAPHIC INFORMATION GENERATED USING SURVEYOR'S TOPOGRAPHIC POINT DATA PROVIDED.

SURVEYOR'S CERTIFICATE
 I CERTIFY THAT THE BOUNDARIES OF THE LANDS TO BE SUBDIVIDED AND THEIR RELATIONSHIP TO ADJACENT LANDS ARE CORRECTLY SHOWN.

SIGNATURE _____ DATE _____

OWNER'S CERTIFICATE
 I AUTHORIZE THE AINLEY GROUP TO PREPARE AND SUBMIT THIS DRAFT PLAN OF SUBDIVISION TO THE TOWN OF PICTON FOR APPROVAL.

SIGNATURE _____ DATE _____

DRAFT

NO.	REVISIONS	DATE	INITIAL

TALBOT ON THE TRAIL
 10451353 CANADA LTD.
 PICTON, ONTARIO

DRAFT PLAN OF SUBDIVISION

SCALE: 1:750
 DESIGN: SO
 DRAWN: SO
 CHECKED: -
 DATE: DEC 2020

Ainley GROUP CONSULTING ENGINEERS PLANNERS

CONTRACT No. 19519-1 DWG 19519-DP1