

# NORTH END BIKEWAY: NOVALEA DRIVE TO CABOT STREET

LEGEND

Future or Existing Bicycle Facility project

Bike Flow via Local Street Bikeway Facility

Location for potential traffic calming

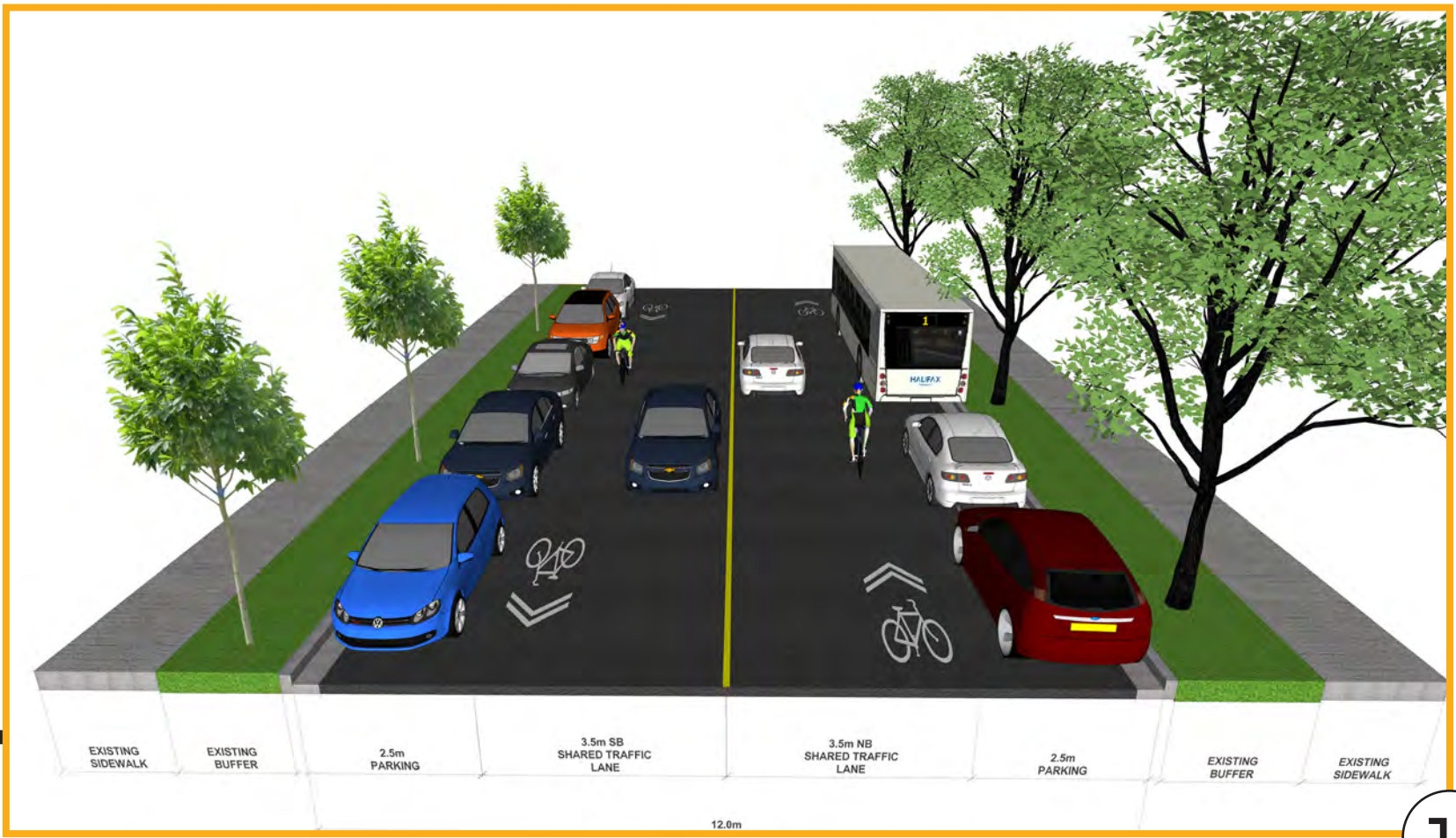
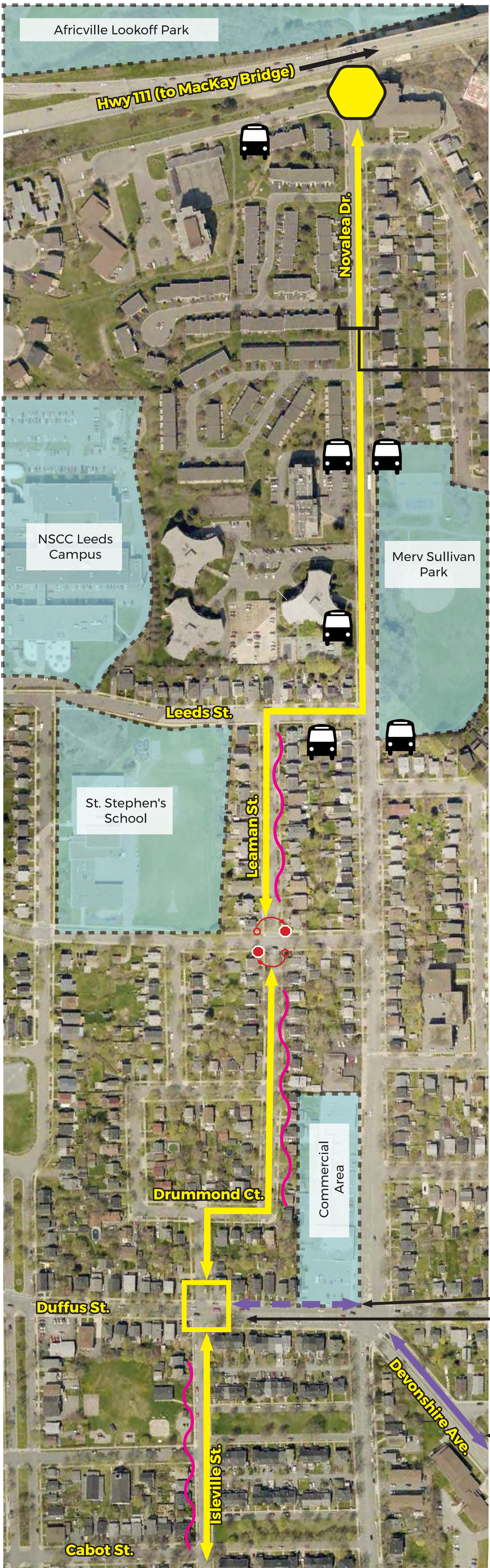
Existing Bus Stop

Stop Sign Reversal

Destinations/ Activity Generators

## NOVALEA DR. TO CABOT ST.

- Improved bicycle flow on Leaman St., and Isleville St. through stop sign reversal. Improved crossing of Duffus Street with RRFB pedestrian crossing.
- Realigned pedestrian crossing at Duffus St. and Isleville St. and the existing pedestrian crossing to be replaced with an RRFB pedestrian crossing.
- No impact. Traffic flow remains unchanged
- No impact for cross section #1. For cross section #2, parking may be affected on the west side of Novalea Dr. between Leeds St. and North Ridge Rd.
- For the cross section with on-street bicycle facilities (see image #1) buses and cyclists would share the lane. For the cross section with the multi-use pathway, a separate concrete waiting pad or a shared bike lane bus stop treatment would be incorporated.
- For the cross section with on-street bicycle facilities (see image #1) no trees would be impacted. For the cross section with the multi-use pathway, the trees on the west side would be removed and replaced in the new median area.



OR



Future Bicycle Facility - Extension of Devonshire Facility

Existing Bicycle Facility - Painted Bicycle Lanes



# NORTH END BIKEWAY: CABOT STREET TO BLOOMFIELD STREET

**LEGEND**

Future or Existing Bicycle Facility project

Bike Flow via Local Street Bikeway Facility

Location for potential traffic calming

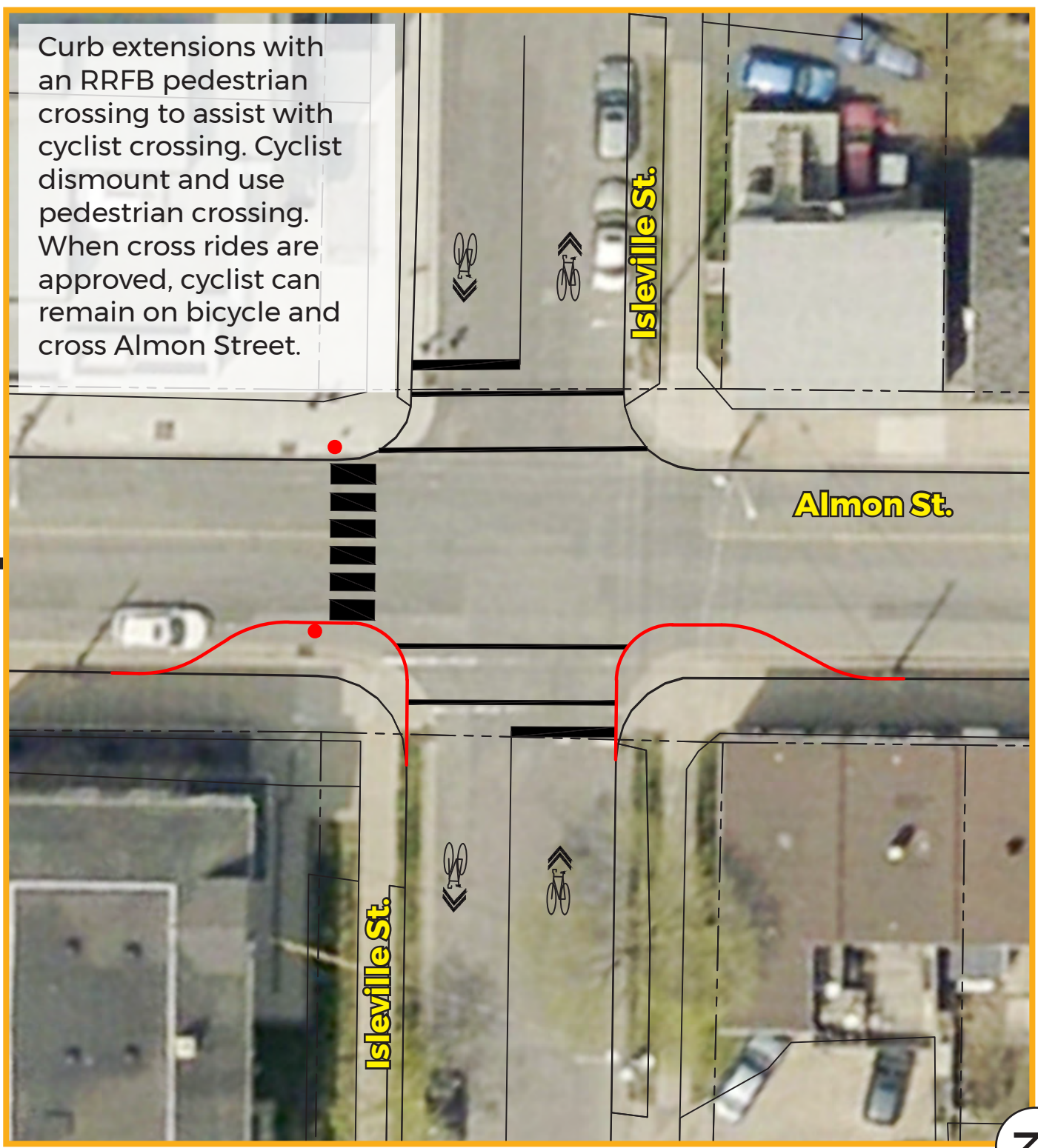
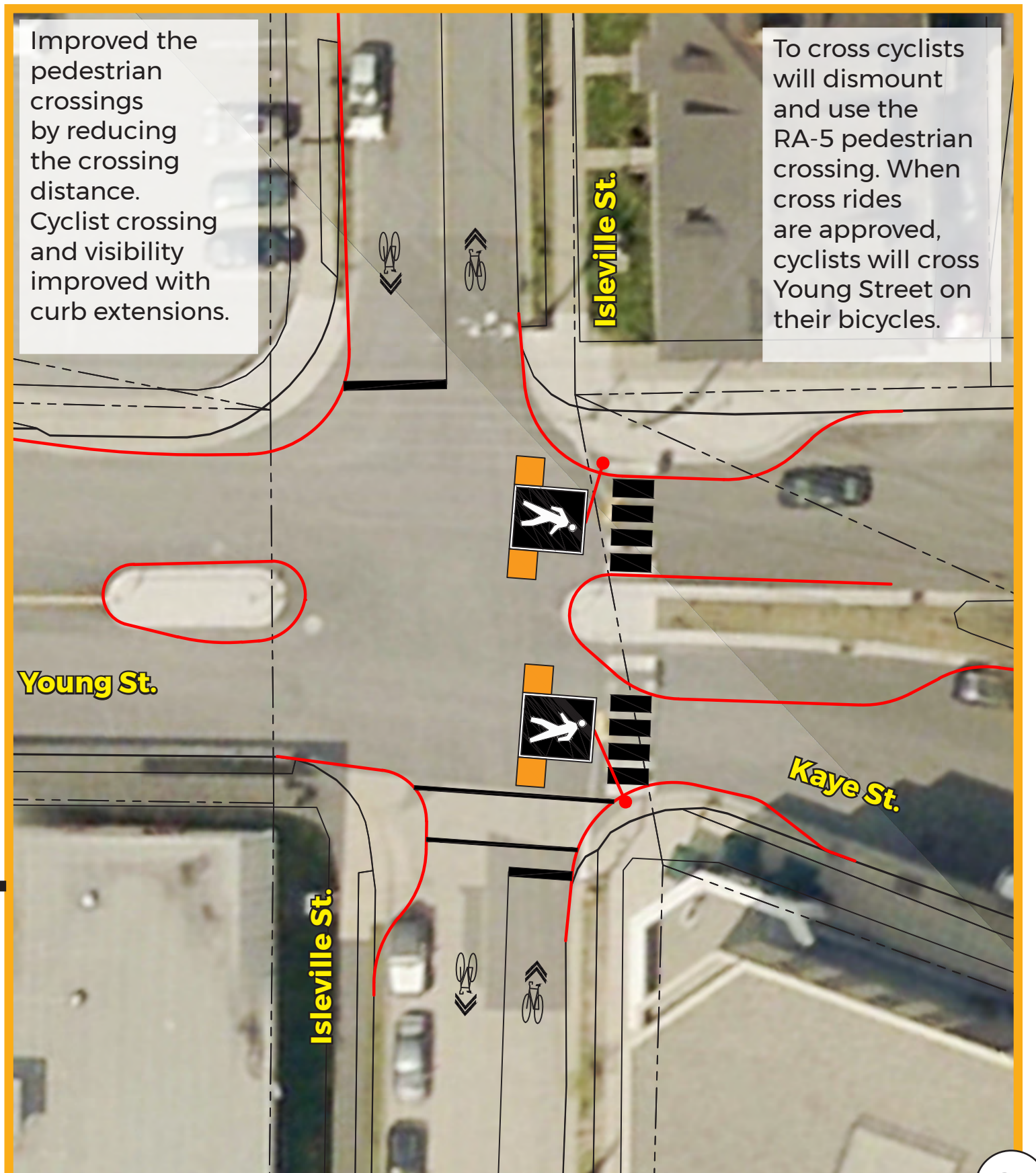
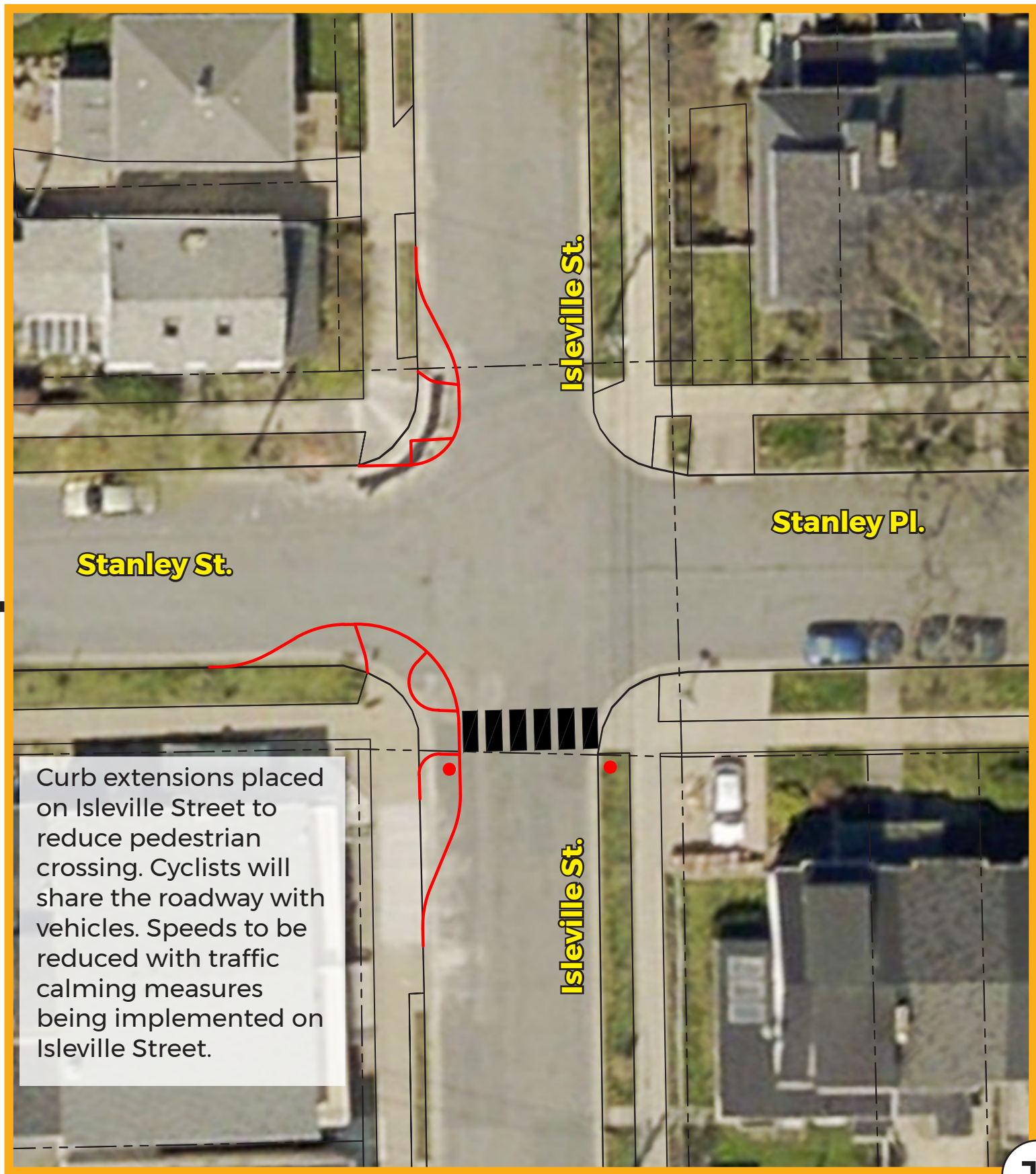
Destinations/Activity Generators

## CABOT ST. TO BLOOMFIELD ST.

- 
- Improved safety and convenience for crossing of major intersections such as Young Street and Almon St.
- 
- Shorter pedestrian crossings at curb extensions.
- 
- Traffic flow direction remains unchanged. Reduced speeds from traffic calming measures.
- 
- No impact.
- 
- No impact.
- 
- Traffic calming measures to be implemented along Isleville St.



Existing Bicycle Facility - Painted Bicycle Lanes



Future Almon St. Bikeway Facility Project

Routing Design Options. See other boards.



# NORTH END BIKEWAY: BLOOMFIELD STREET TO BUDDY DAYE STREET

## OPTION A: 2-WAY BICYCLE AND TRAFFIC FLOW ON NORTHWOOD TERRACE AND CREIGHTON STREET

**LEGEND**

Future or Existing Bicycle facility project

Traffic Flow

Bike Flow via Local Street Bikeway Facility

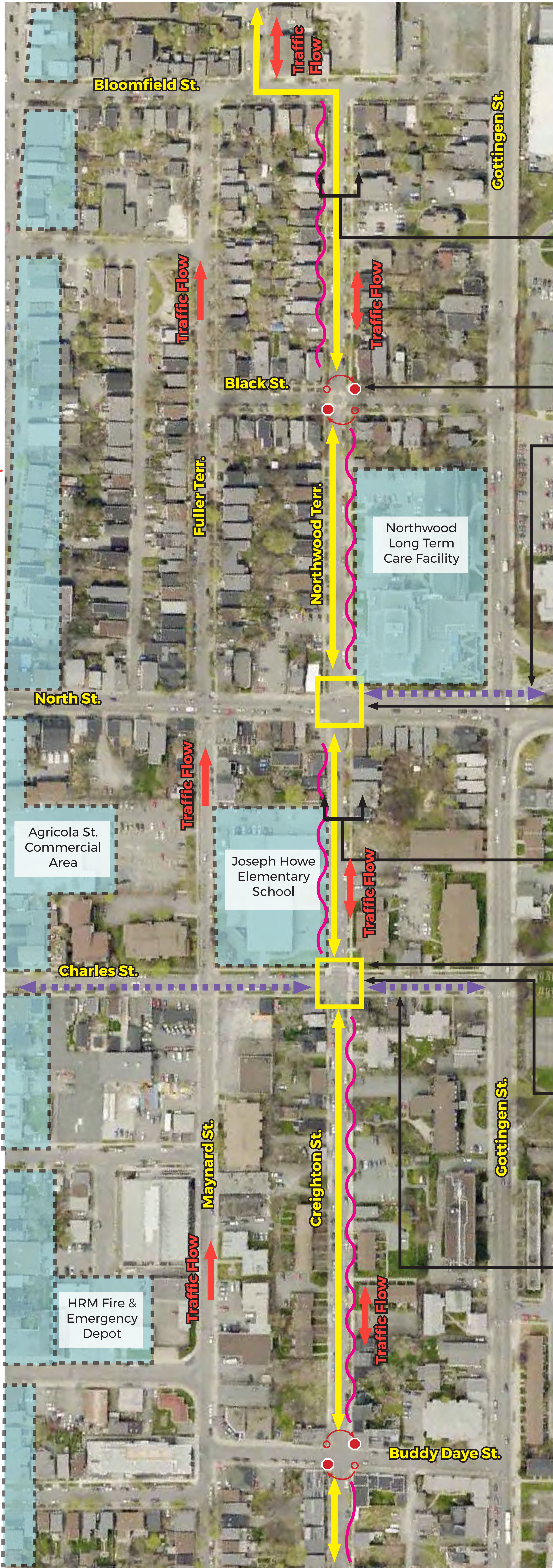
Location for potential traffic calming

Stop Sign Reversal

Destinations/ Activity Generators

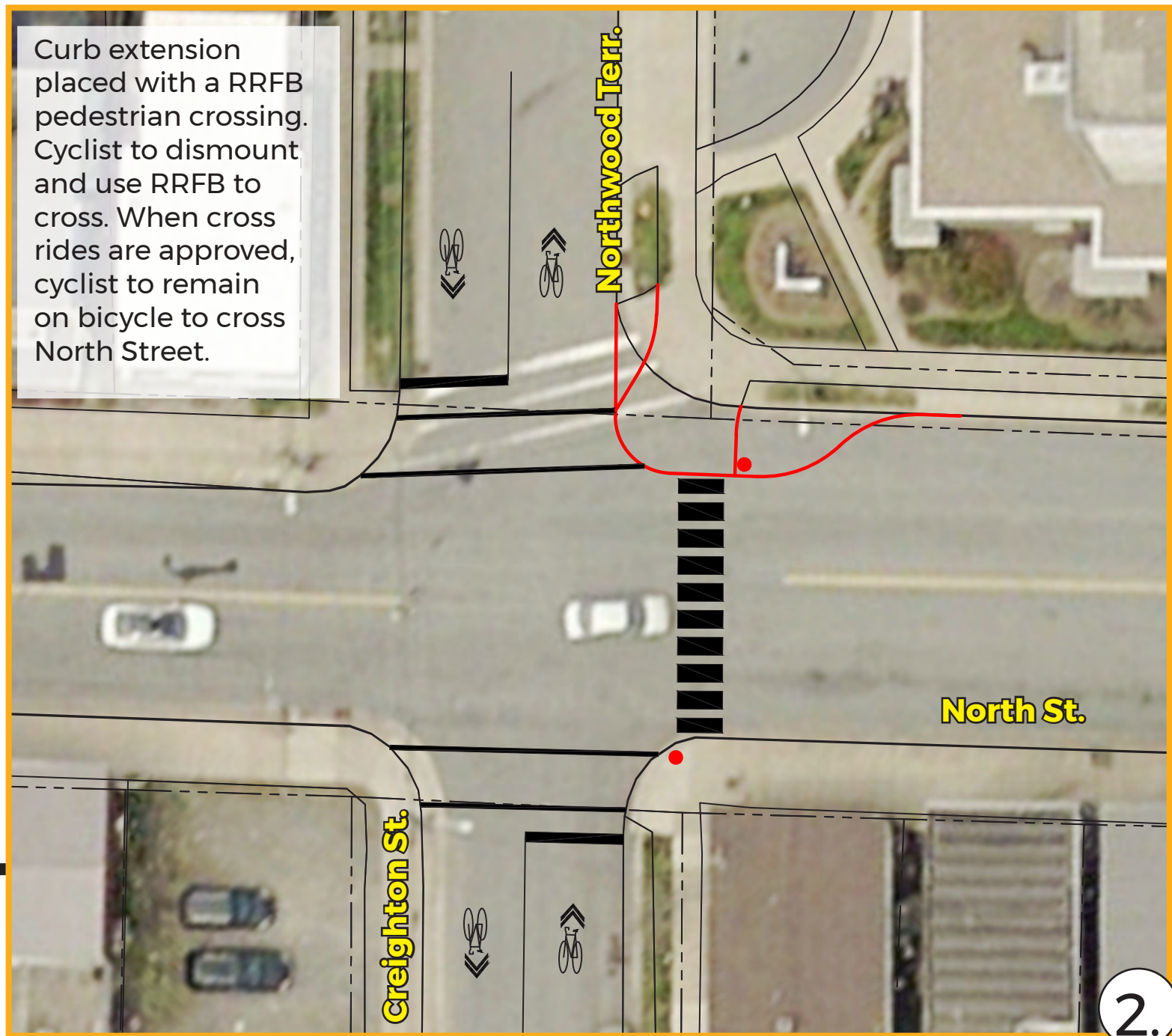
### BLOOMFIELD ST. TO BUDDY DAYE ST.

- Improved bicycle flow on Northwood Terr. and Creighton St. through stop sign reversal. Improved safety and convenience for crossing at major intersections.
- Shorter pedestrian crossing with curb extensions and enhanced facility at North St. and Creighton St. intersection.
- Two-way traffic flow on Northwood Terr. and Creighton St. All other traffic flow conditions on other streets remain unchanged.
- Loss of parking on the west side of Northwood Terr. and loss of parking on the east side of Creighton St.  
  
Possibility of retaining parking on 1.5 sides (yielding treatment required).
- No impact
- Traffic calming measures to be implemented along Northwood Terr. and Creighton St.



Community Mural

Future project: Macdonald Bridge Bicycle Facility connection



Community Mural



Potential Future Local Street Bikeway project



# NORTH END BIKEWAY: BUDDY DAYE STREET TO COGSWELL STREET

## OPTION A: 2-WAY BICYCLE AND TRAFFIC FLOW ON NORTHWOOD TERRACE AND CREIGHTON STREET

**LEGEND**

- Future or Existing Bicycle Facility
- Traffic Flow
- Bike Flow via Local Street Bikeway Facility
- Bicycle facility connection option
- Location for potential traffic calming
- Stop Sign Reversal
- Destinations/ Activity Generators

**BUDDY DAYE ST. TO COGSWELL ST.**

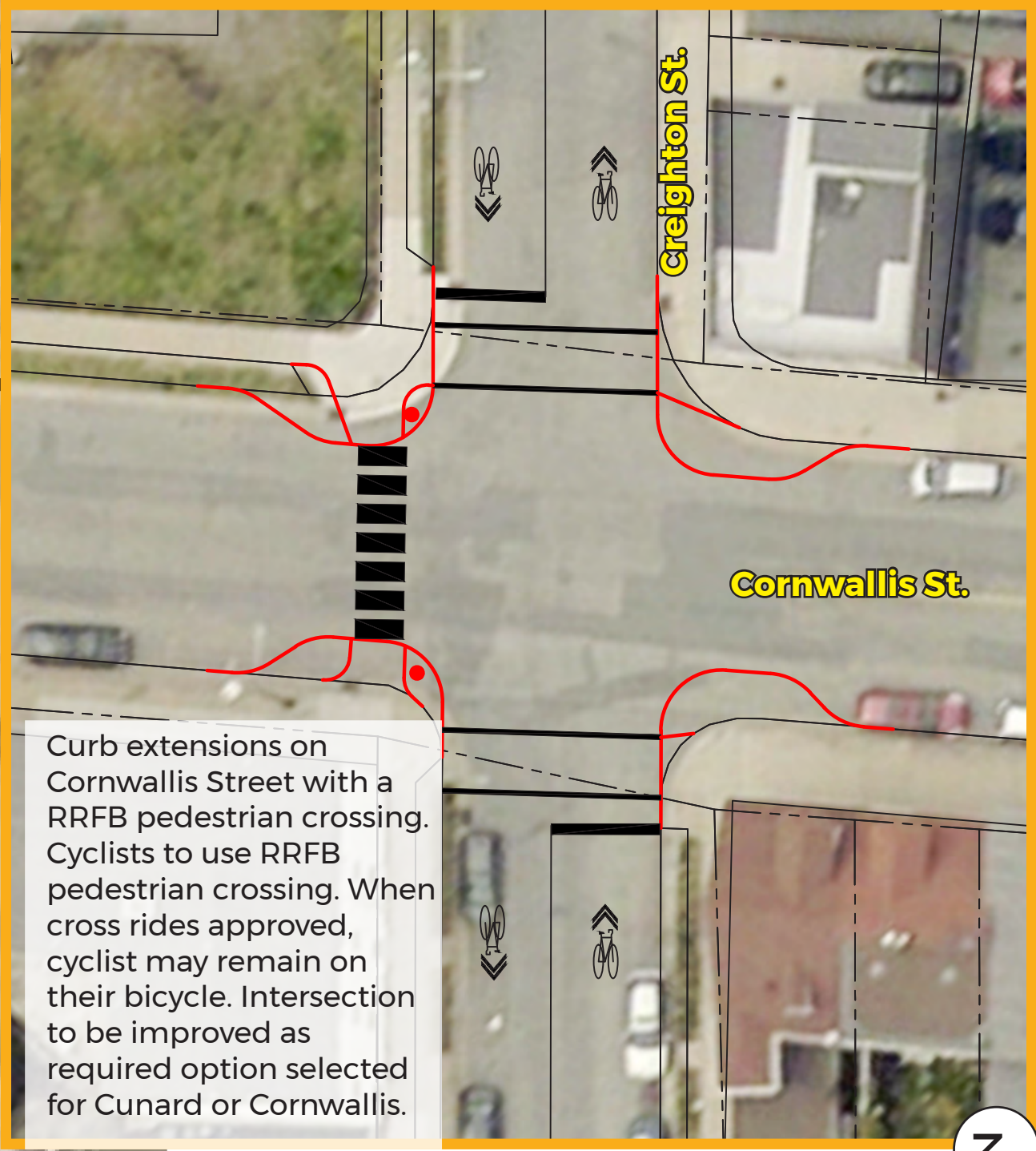
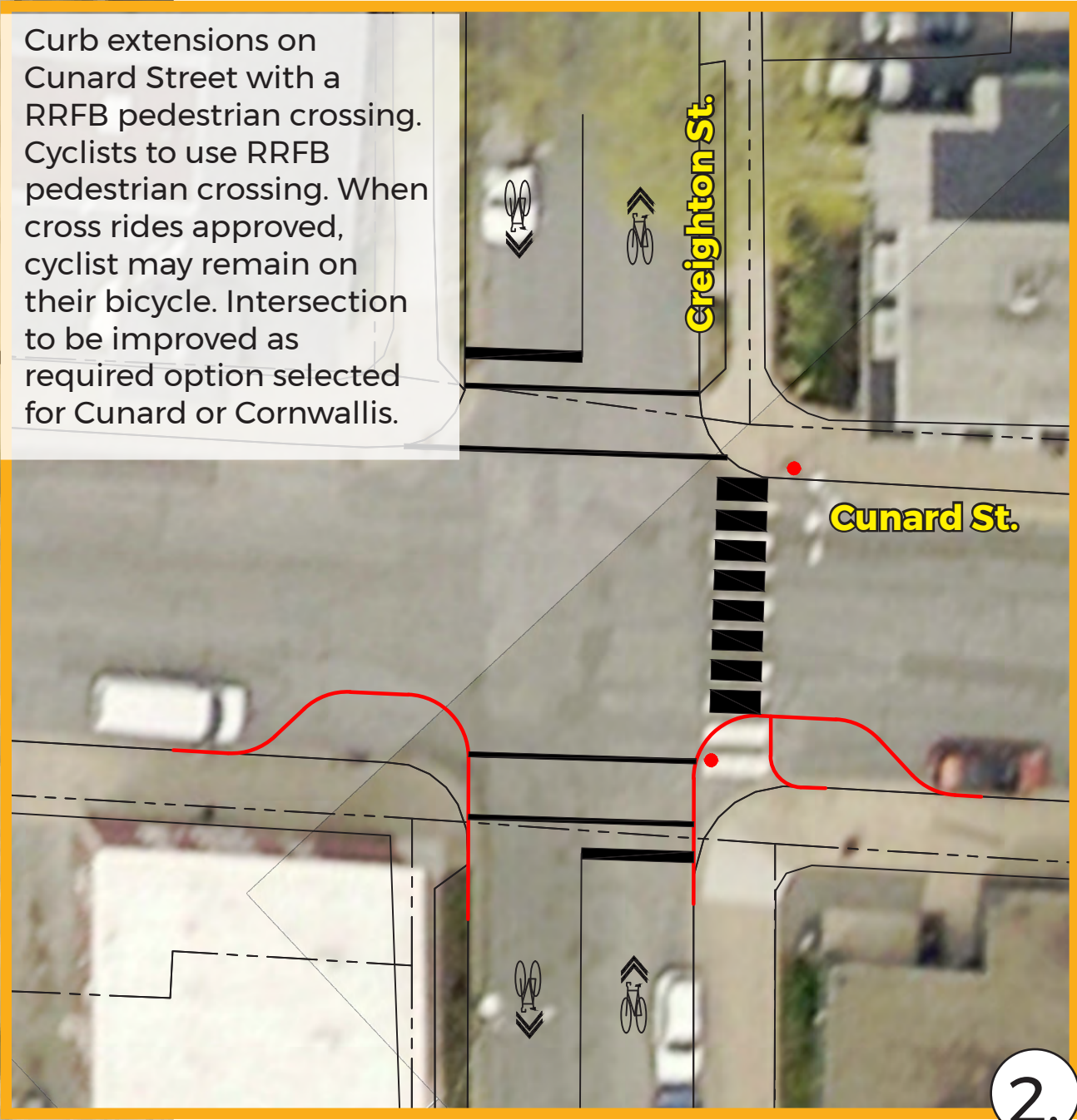
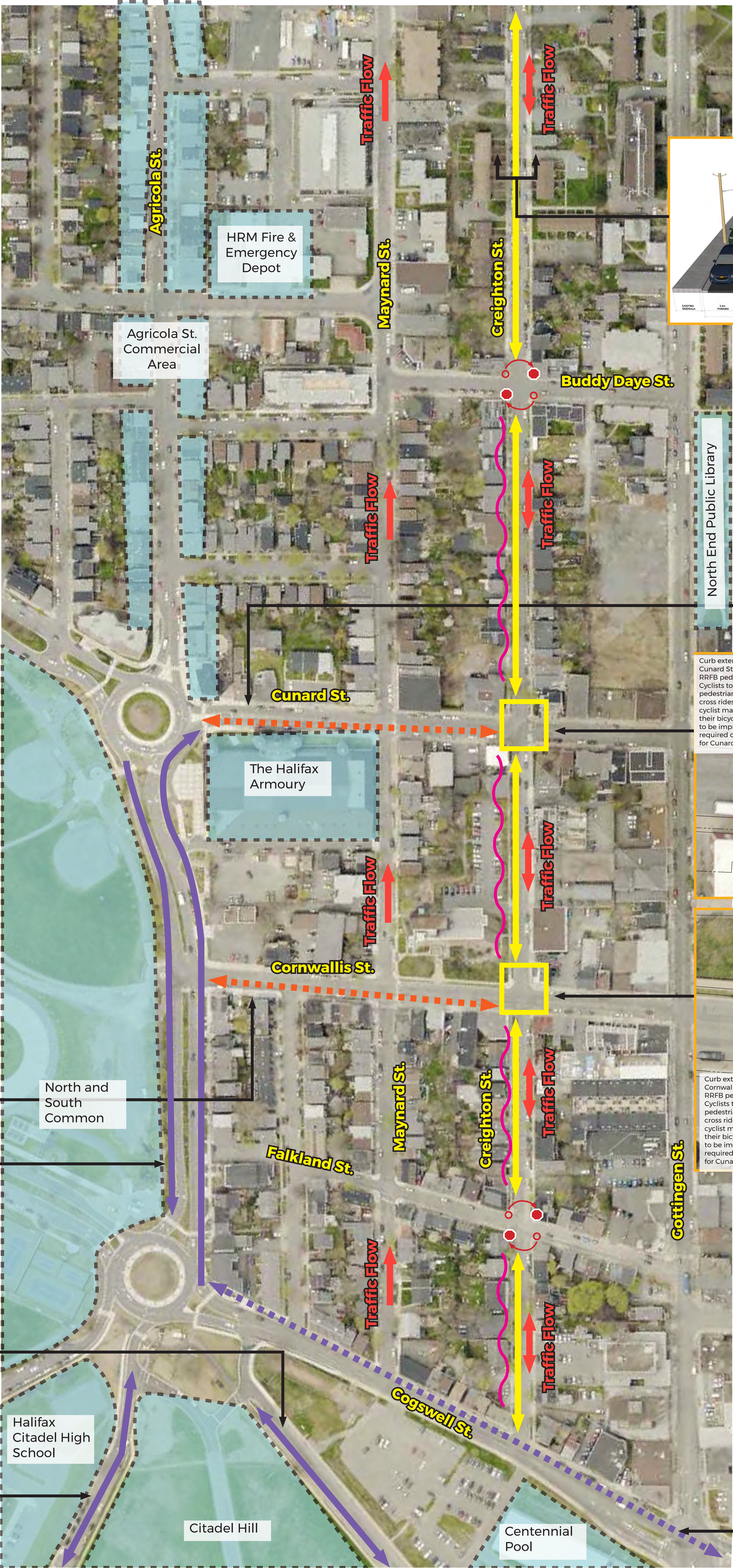
- Improved bicycle flow on Creighton St. through stop sign reversal. Improved safety and convenience for crossing at major intersections.
- Shorter pedestrian crossings with curb extensions and improved crossing control.
- Two-way traffic flow on Creighton St. Reduced speeds from traffic calming measures.
- Possible loss of parking on east side of Creighton St. Further parking consideration being done.
- No impact.
- Traffic calming measures to be implemented along Creighton St.

See Cunard St. vs. Cornwallis St. Board

Existing bicycle facility on North Park (painted uni-directional bike lanes)

Existing bicycle facility on Rainnie Dr. (protected, bi-directional bikeway)

Current project: Ahern Ave. (bi-directional bike path)



Future project: Cogswell AT Greenway



# NORTH END BIKEWAY: BLOOMFIELD STREET TO BUDDY DAYE STREET.

## OPTION B: LSB AND CONTRA-FLOW BICYCLE LANE ON NORTHWOOD TERRACE AND CREIGHTON STREET

LEGEND

Future or Existing Bicycle facility project

Traffic Flow

Bike Flow via Local Street Bikeway Facility

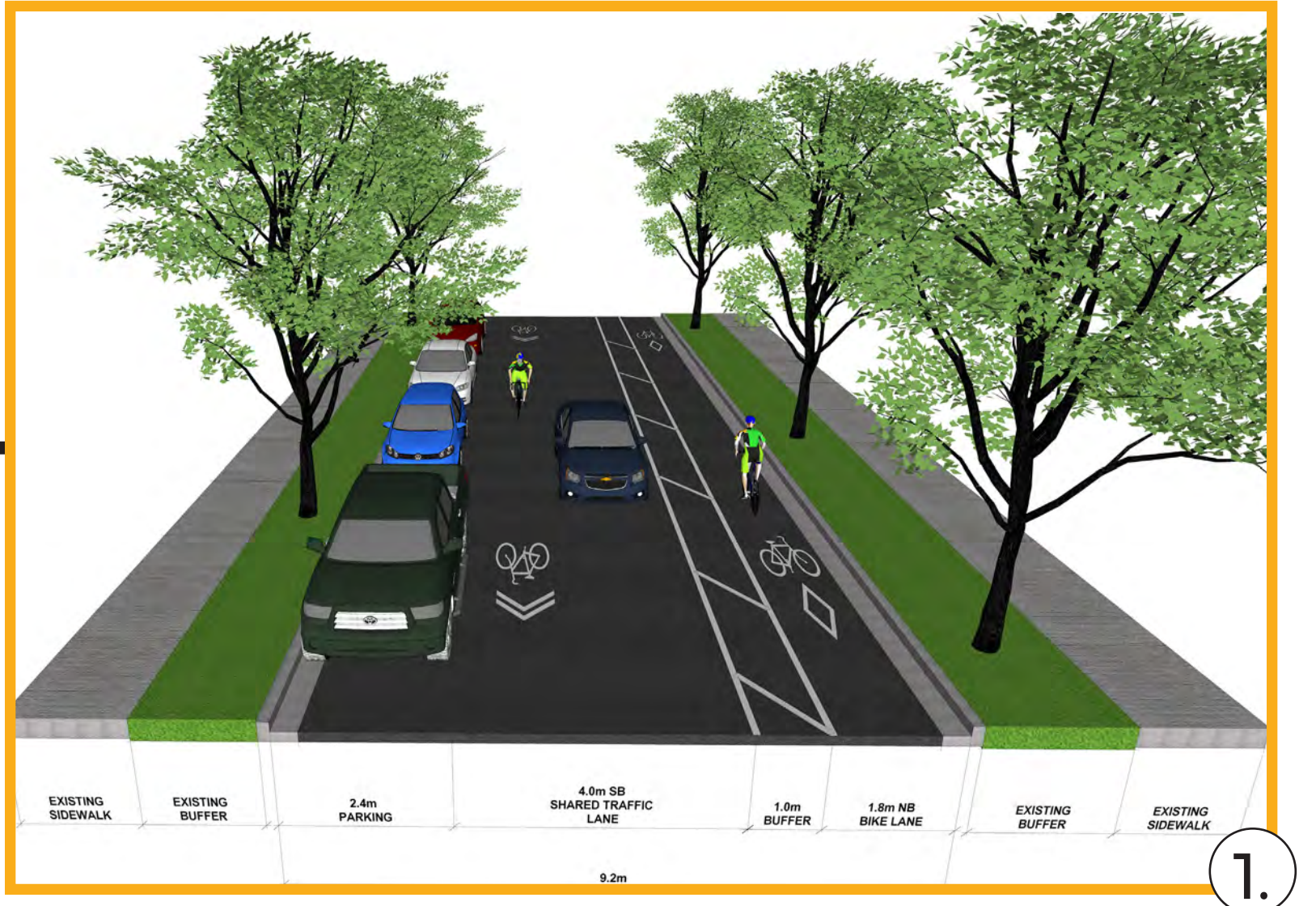
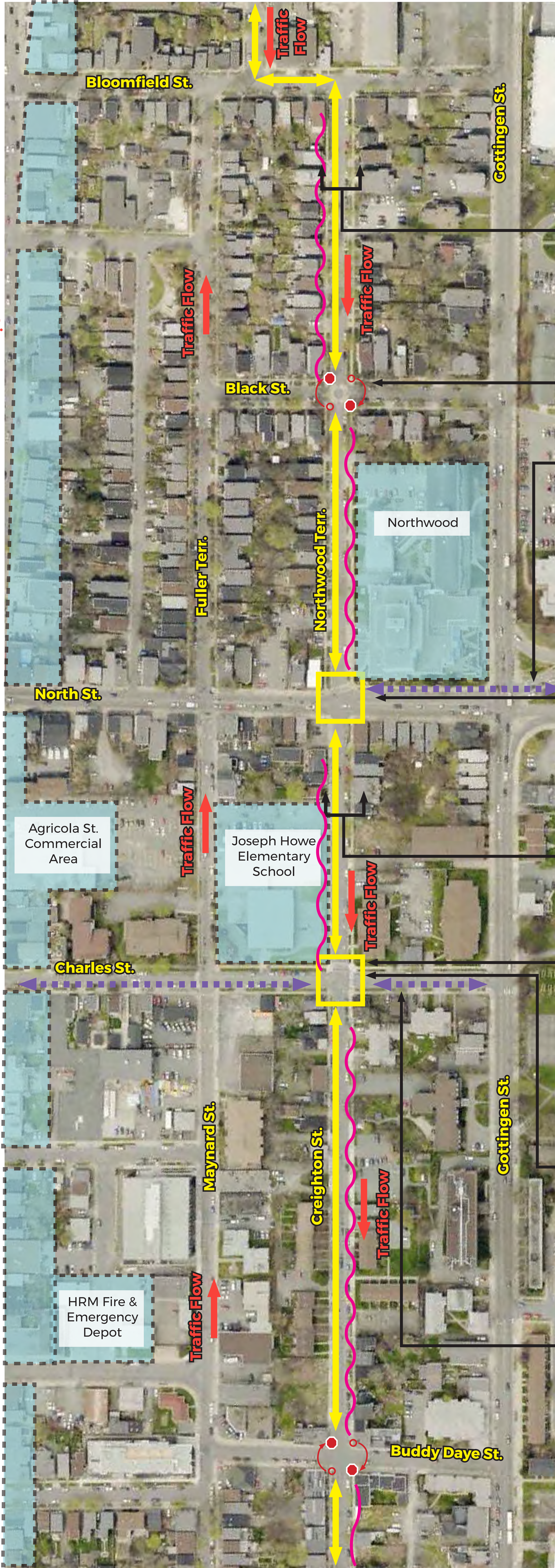
Location for potential traffic calming

Stop Sign Reversal

Destinations/ Activity Generators

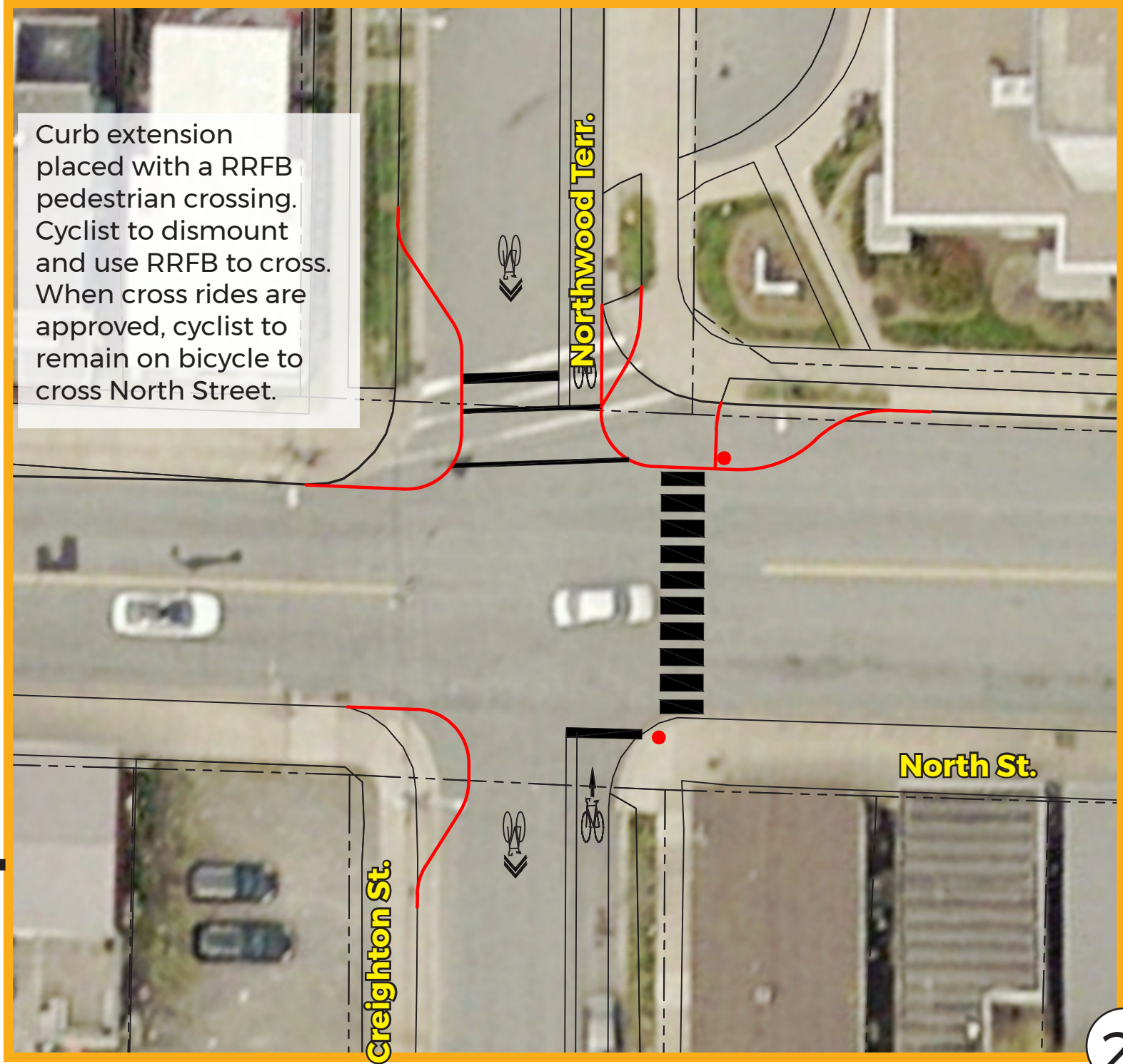
### BLOOMFIELD ST. TO BUDDY DAYE ST.

- 
- Improved bicycle flow on Northwood Terr. and Creighton St. through stop sign reversal. Improved safety and convenience for crossing at major intersections.

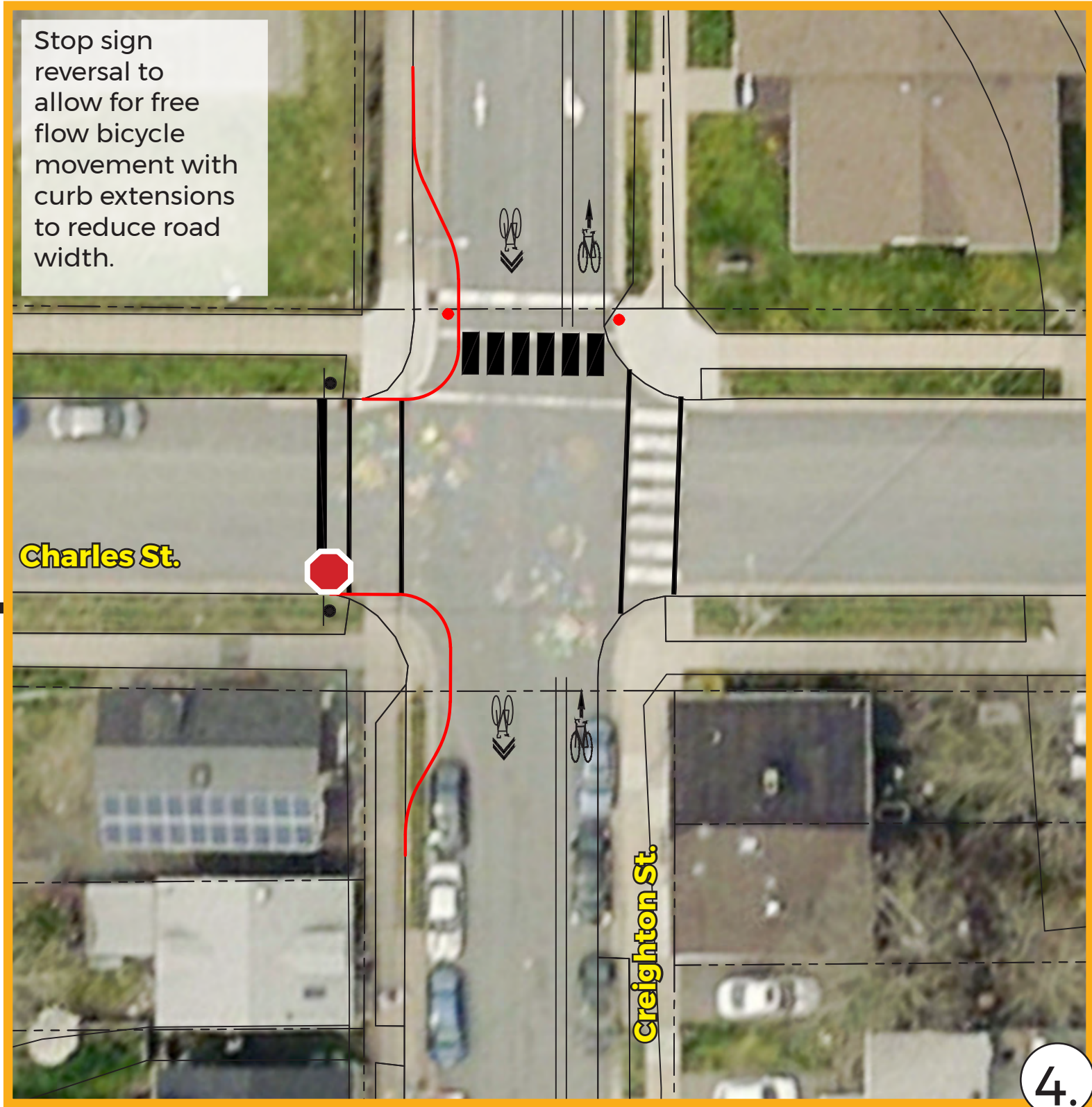
Shorter pedestrian crossings with curb extensions and enhanced crossing control.Reduced speeds from traffic calming measures.Possible loss of parking on the west side of Northwood Terr. and east side of Creighton St. Further parking consideration being done.No impact.Traffic calming measures to be implemented along Northwood Terr. and Creighton St.

Community Mural

Future project: Macdonald Bridge Bicycle Facility connection



Community Mural



Potential future Local Street Bikeway project



# NORTH END BIKEWAY: BUDDY DAYE STREET TO COGSWELL STREET

## OPTION B: LSB AND CONTRA-FLOW BICYCLE LANE ON NORTHWOOD TERRACE AND CREIGHTON STREET

**LEGEND**

- Future or Existing Bicycle Facility
- Traffic Flow
- Bike Flow via Local Street Bikeway Facility
- Bicycle facility connection option
- Location for potential traffic calming
- Stop Sign Reversal
- Destinations/Activity Generators

**BUDDY DAYE ST. TO COGSWELL ST.**

- Improved bicycle flow on Creighton St. through stop sign reversal. Improved safety and convenience for crossing at major intersections.
- Shorter pedestrian crossings with curb extensions.
- Reduced speeds from traffic calming measures.
- Possible loss of parking on east side of Creighton St. Further parking consideration being done.
- No impact
- Traffic calming measures to be implemented along Creighton St.

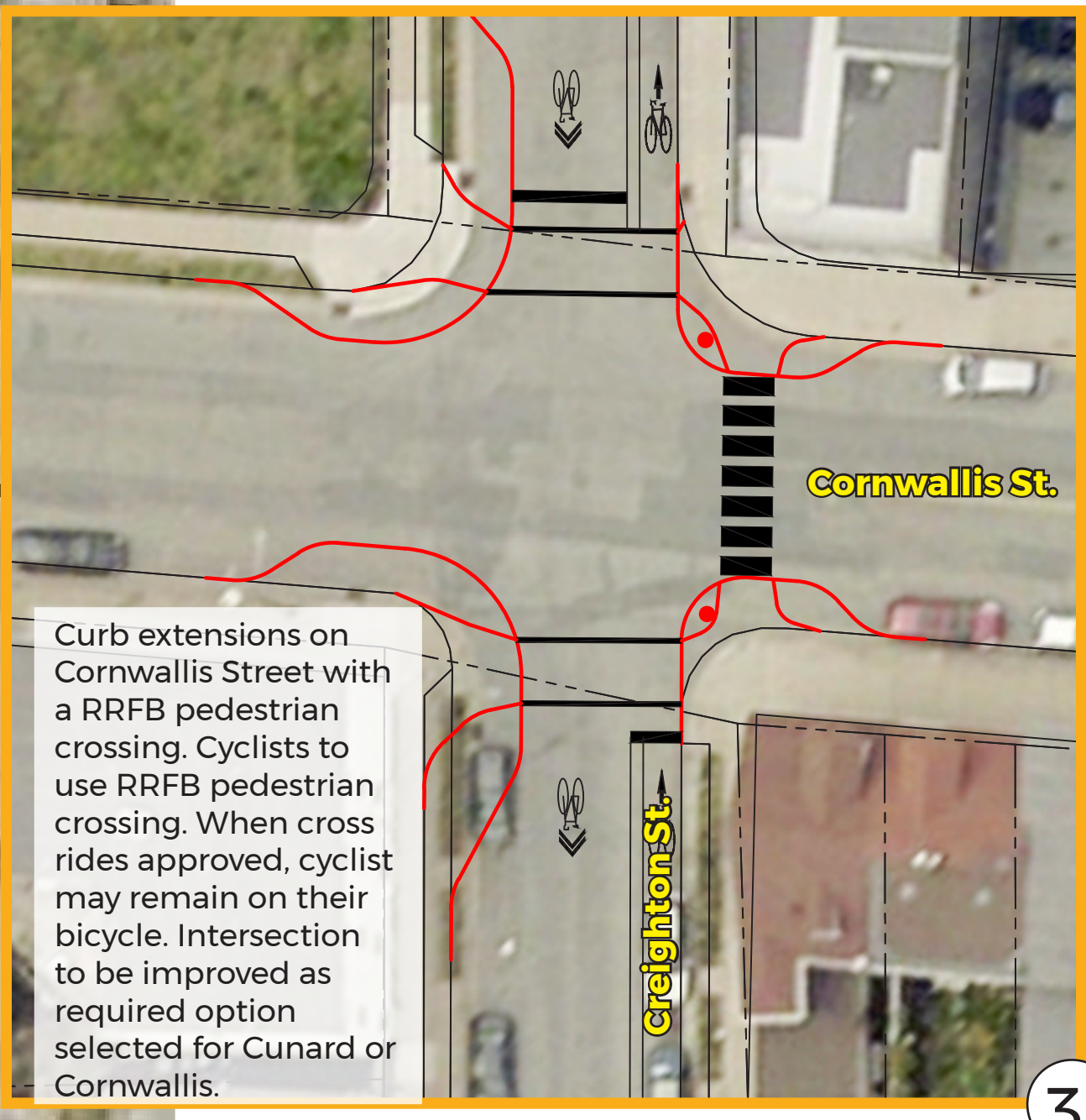
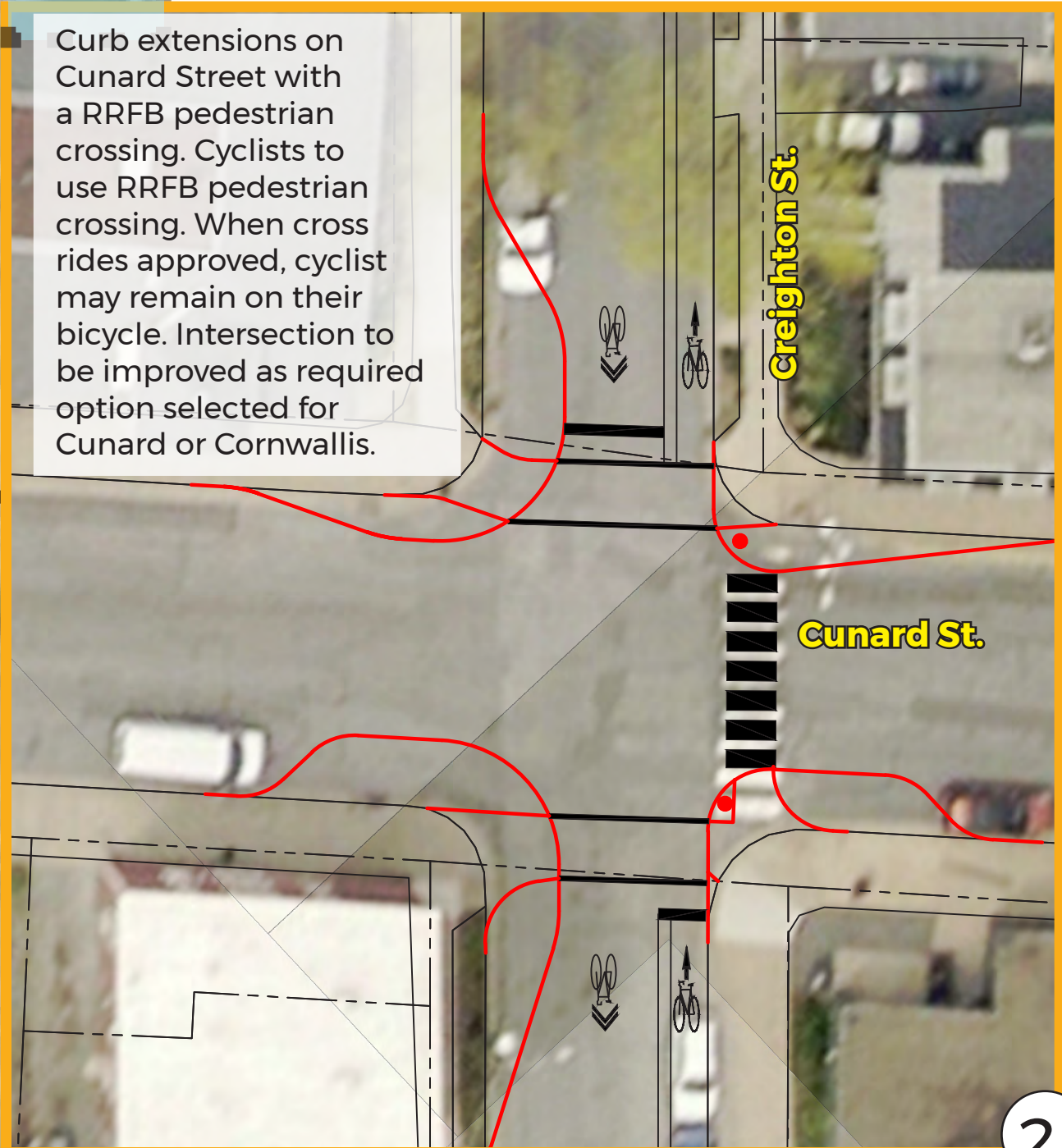
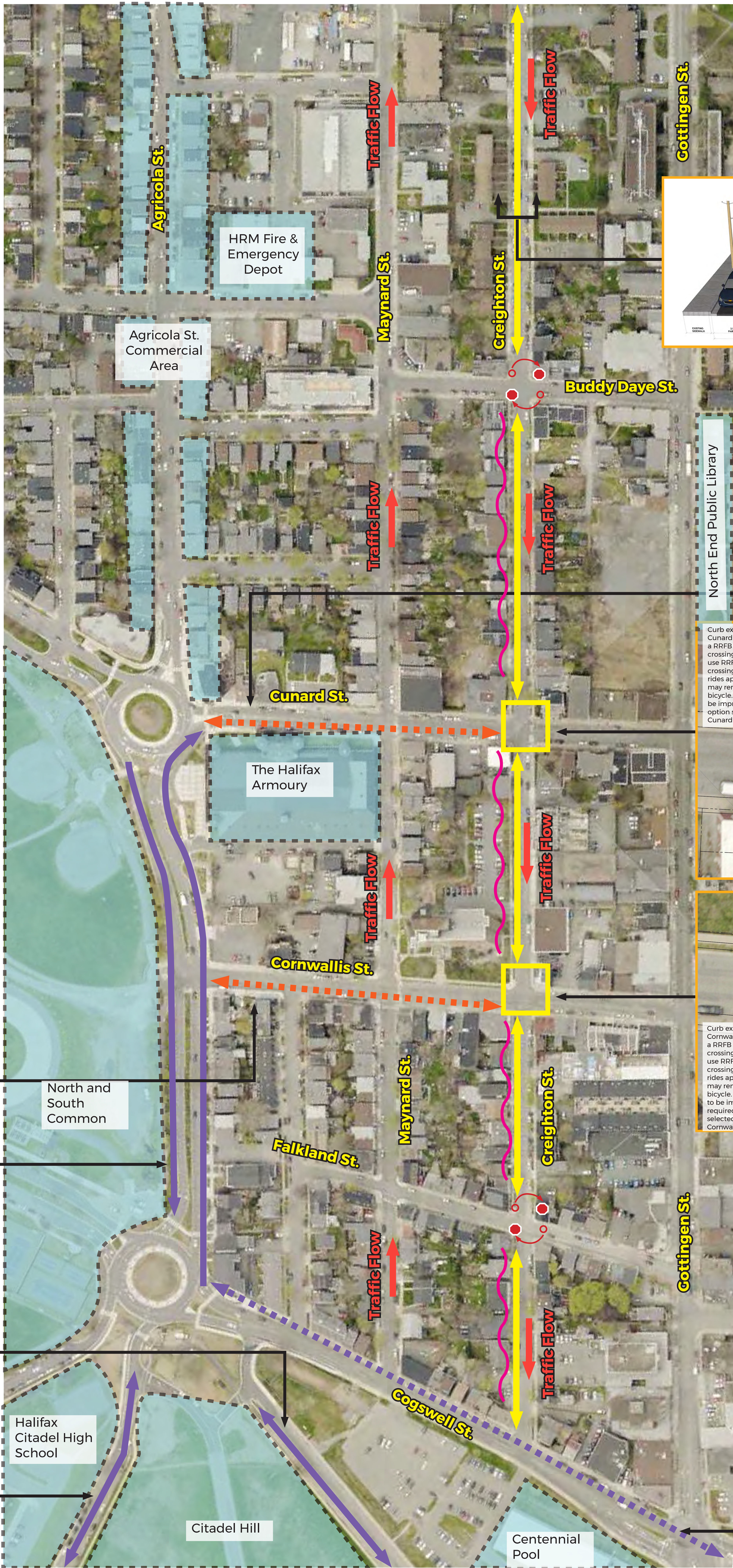
See Cunard St. vs. Cornwallis St. Board

Existing bicycle facility on North Park (painted uni-directional bike lanes)

Existing bicycle facility on Rainnie Dr. (protected, bi-directional bikeway)

Current project: Ahern Ave. (bi-directional bike path)

Future project: Cogswell AT Greenway





# NORTH END BIKEWAY: BLOOMFIELD STREET TO BUDDY DAYE STREET

OPTION C: 1-WAY COUPLETS FOR BICYCLE FLOW AND TRAFFIC FLOW ON MAYNARD ST. & CREIGHTON ST.  
WITH 2-WAY BICYCLE FLOW & TRAFFIC FLOW ON NORTHWOOD TERR.

## LEGEND

- Future or Existing Bicycle facility project
- Traffic Flow
- Bike Flow via Local Street Bikeway Facility
- Location for potential traffic calming
- Stop Sign Reversal
- Destinations/ Activity Generators

### BLOOMFIELD ST. TO CHARLES ST.



Improved bicycle flow on Northwood Terr. and Creighton St. through stop sign reversal. Improved safety and convenience for crossing at major intersections.



Shorter pedestrian crossings with curb extensions and enhanced crossing controls.



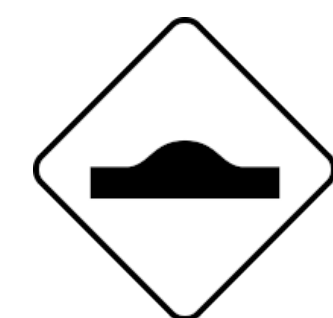
Two way traffic flow on Northwood Terr. Reduced speeds from traffic calming measures.



Possible loss of parking on the west side of Northwood Terr. and east side of Creighton St. Further parking consideration being done.



No impact.



Traffic calming measures to be implemented along Northwood Terr. and Creighton St.

### CHARLES ST. TO BUDDY DAYE ST.



Improved bicycle flow on Creighton St. and Maynard St. through stop sign reversal. Improved safety and convenience for crossing major intersections.



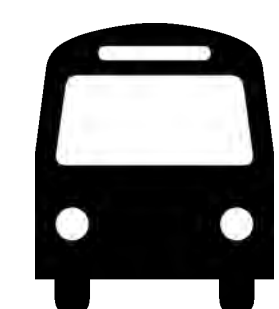
Shorter pedestrian crossings with curb extensions.



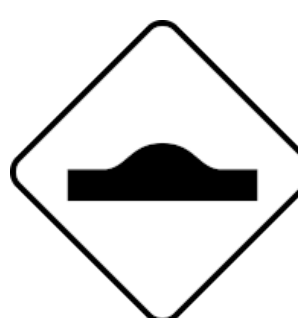
Reduced speeds from traffic calming measures.



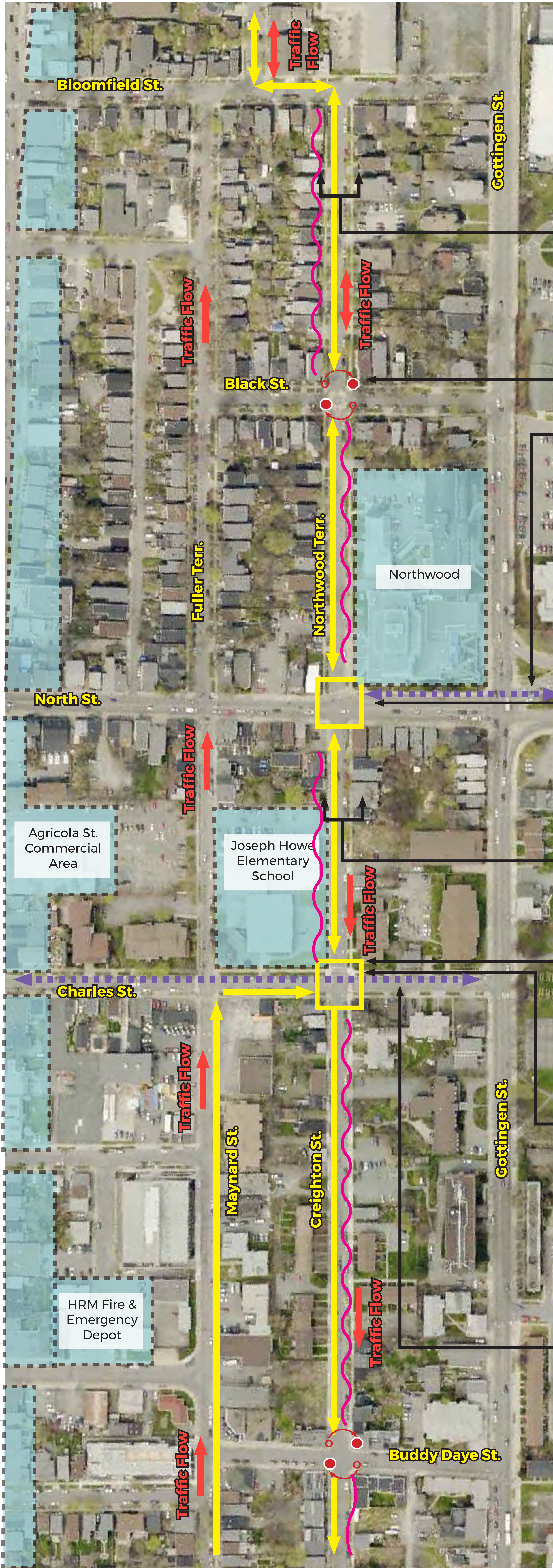
No impact.



No impact.

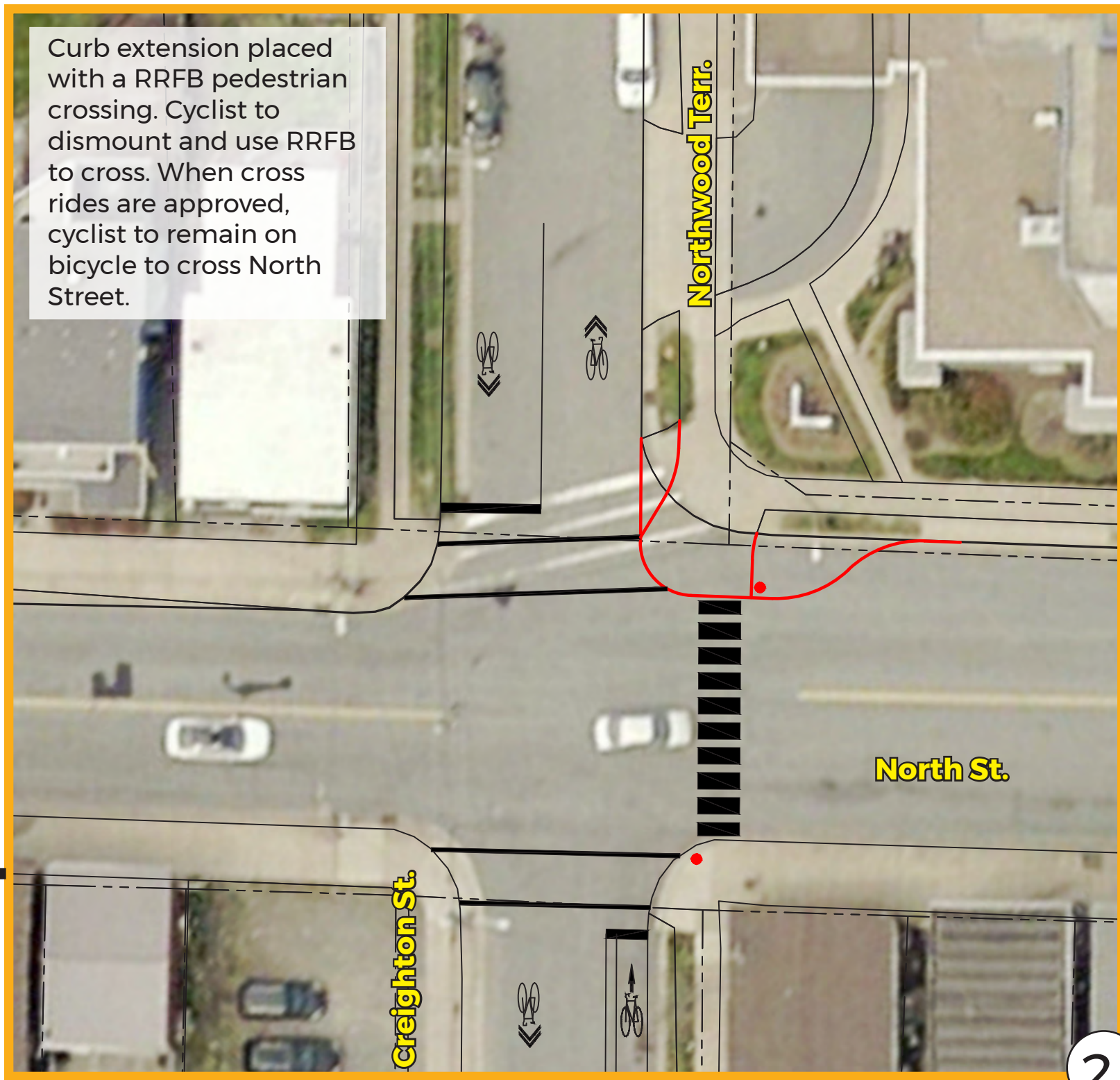


Traffic calming measures to be implemented along Maynard St. and Creighton St.

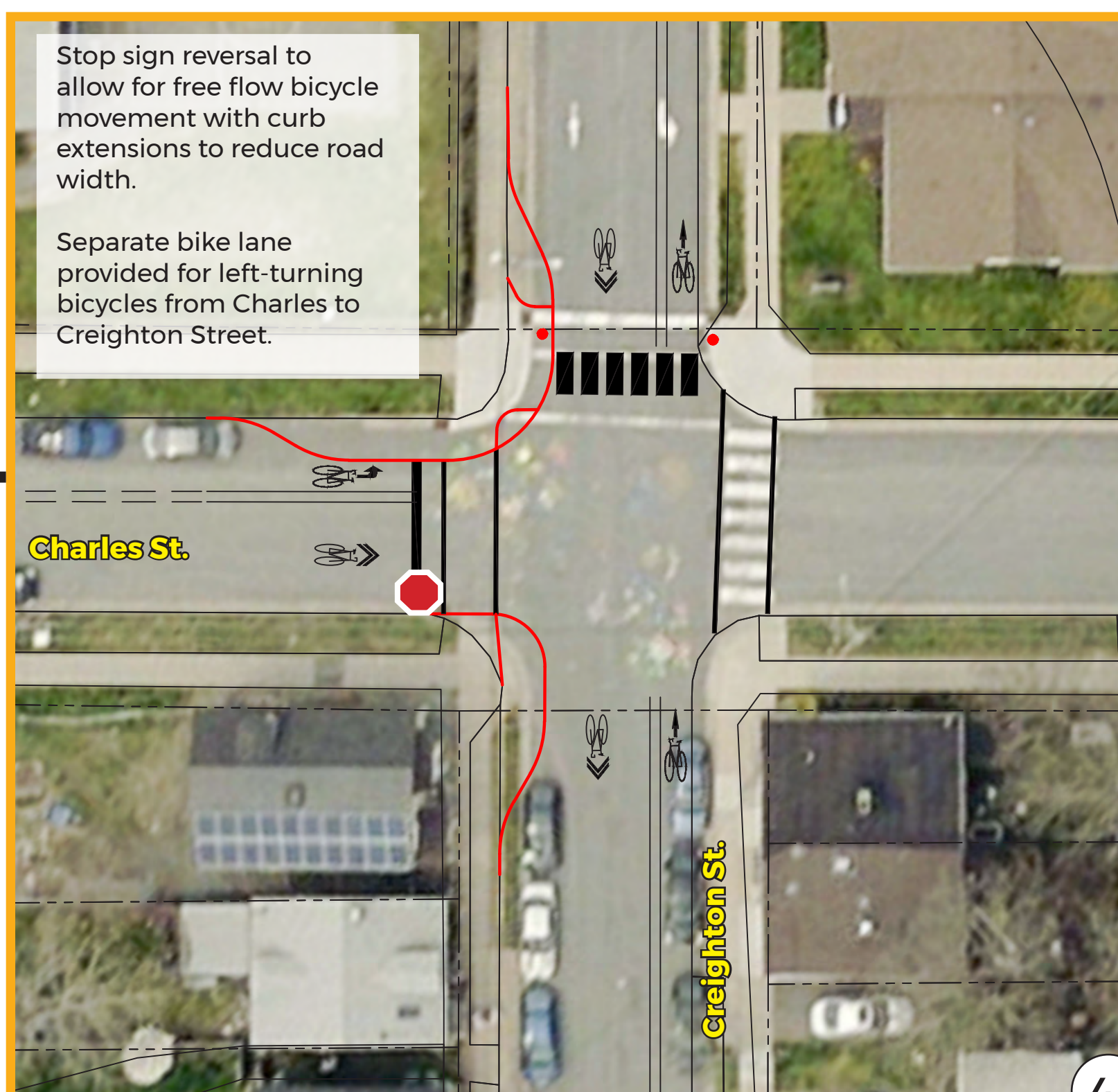


Community Mural

Future project: Macdonald Bridge Bicycle Facility connection



Community Mural



Potential future Local Street Bikeway project



# NORTH END BIKEWAY: BUDDY DAYE STREET TO COGSWELL STREET

OPTION C: 1-WAY COUPLETS FOR BICYCLE FLOW AND TRAFFIC FLOW ON MAYNARD ST. & CREIGHTON ST.  
WITH 2-WAY BICYCLE FLOW & TRAFFIC FLOW ON NORTHWOOD TERR.

**LEGEND**

- Future or Existing Bicycle Facility
- Traffic Flow
- Bike Flow via Local Street Bikeway Facility
- Bicycle facility connection option
- Location for potential traffic calming
- Stop Sign Reversal
- Destinations/Activity Generators

## BUDDY DAYE ST. TO COGSWELL ST.

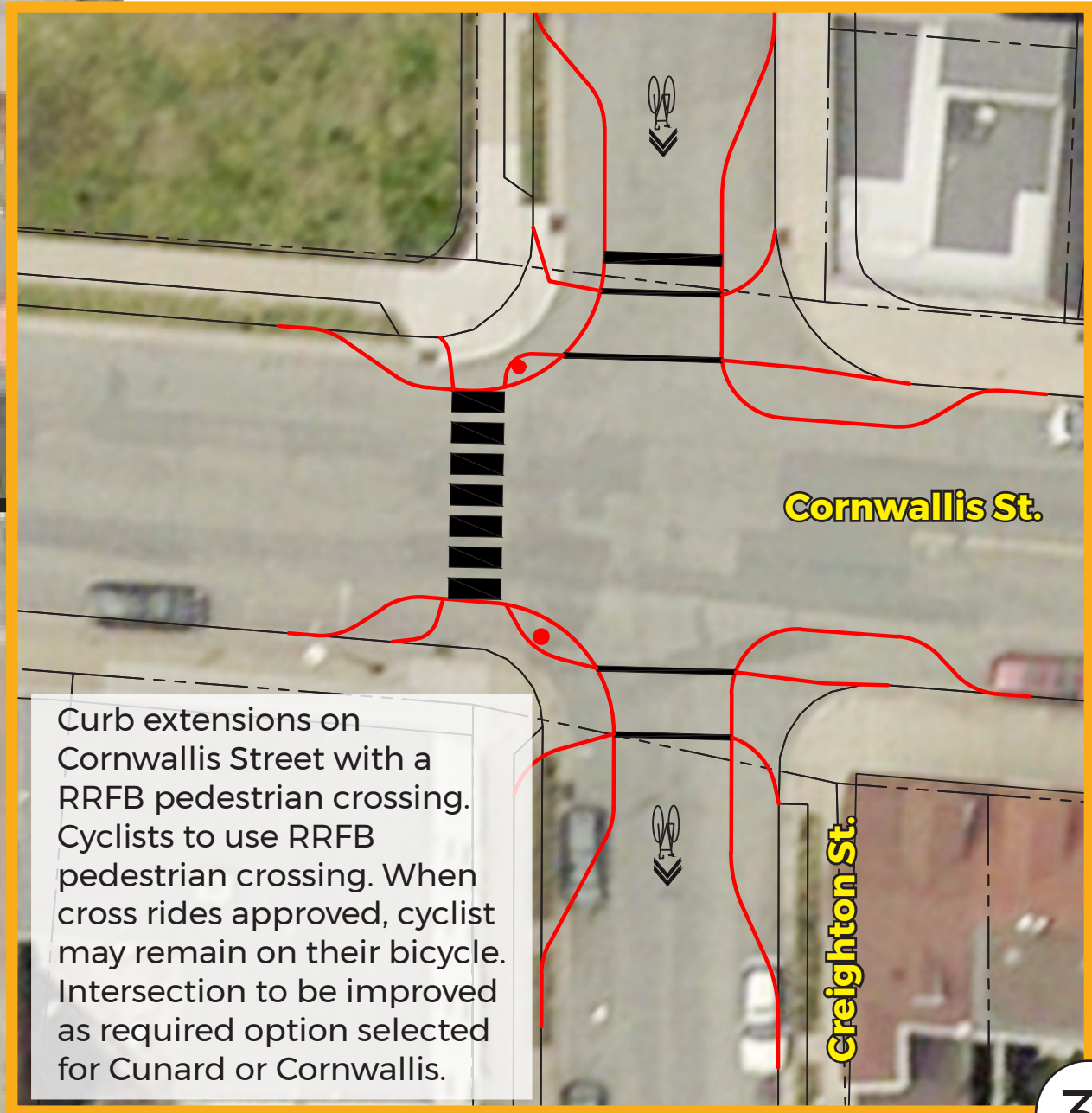
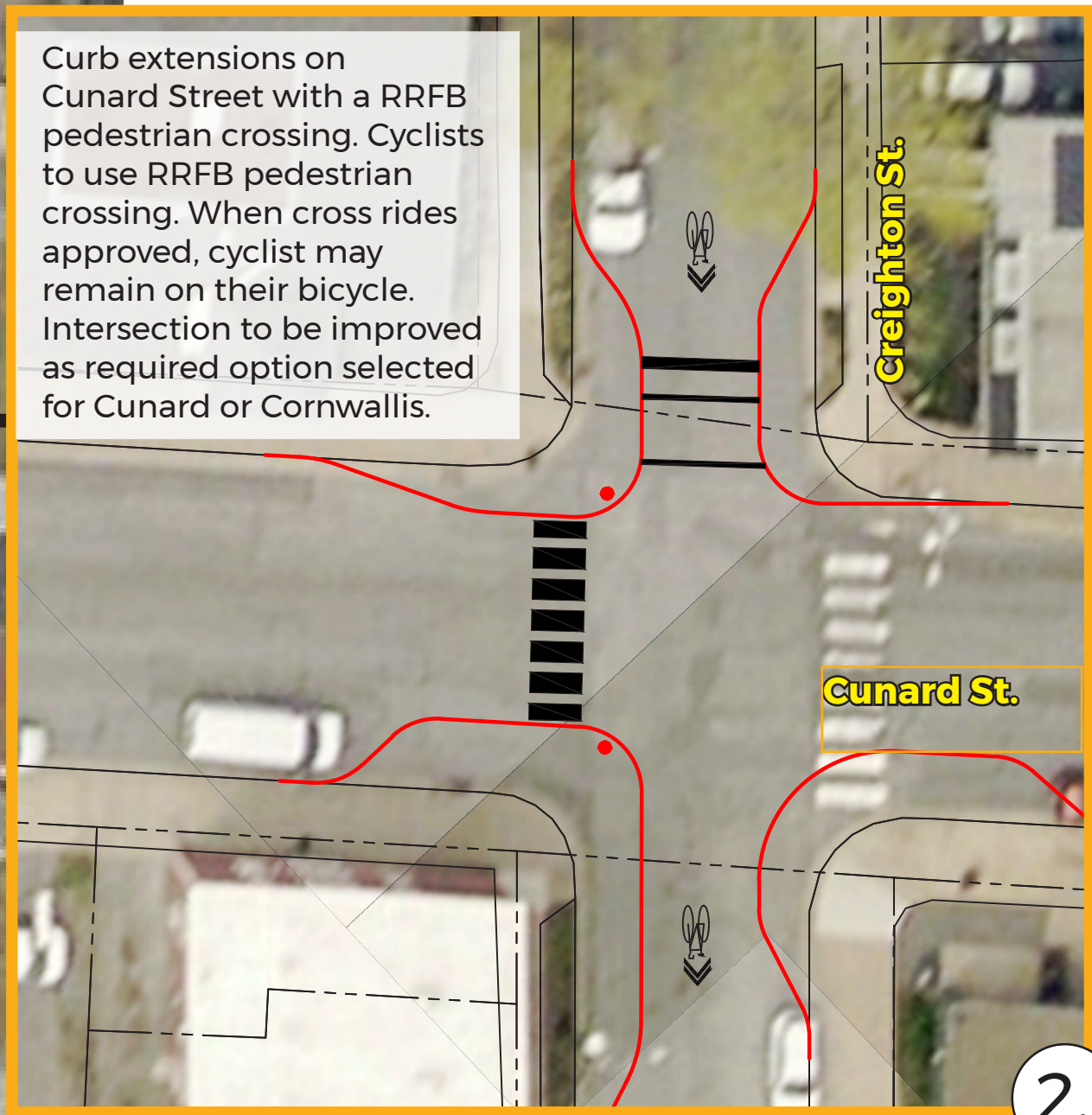
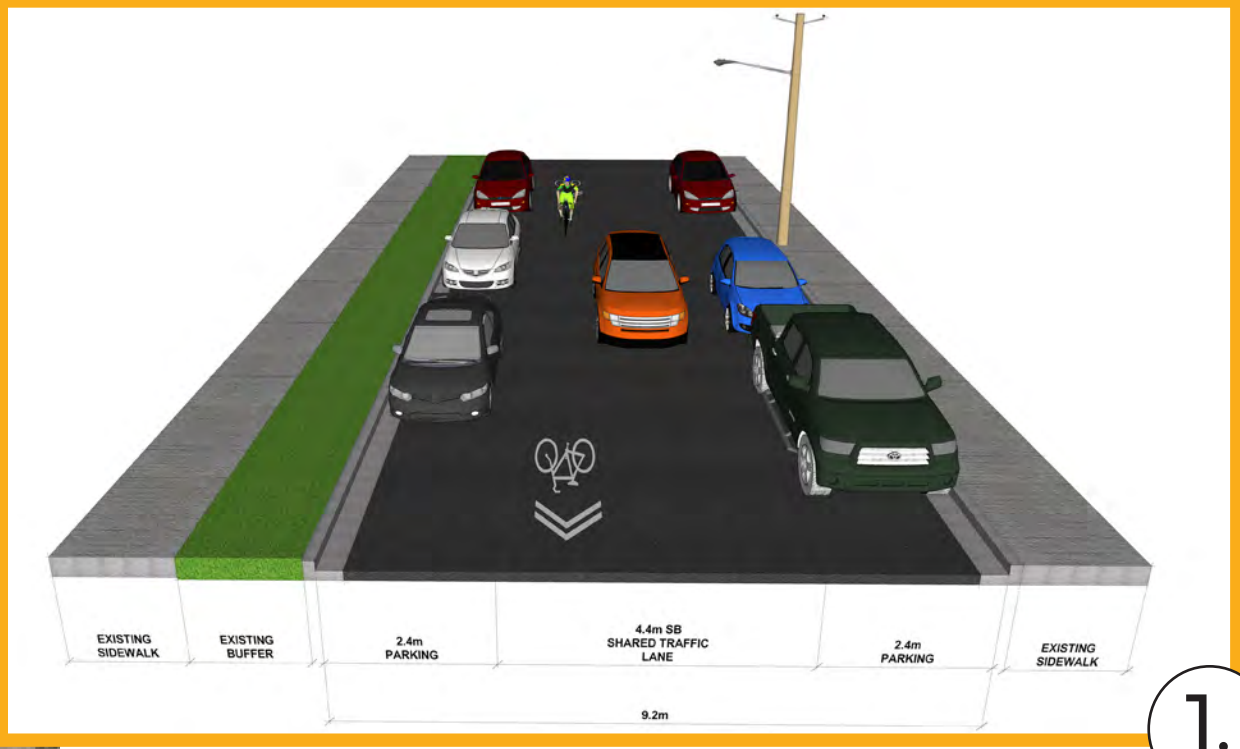
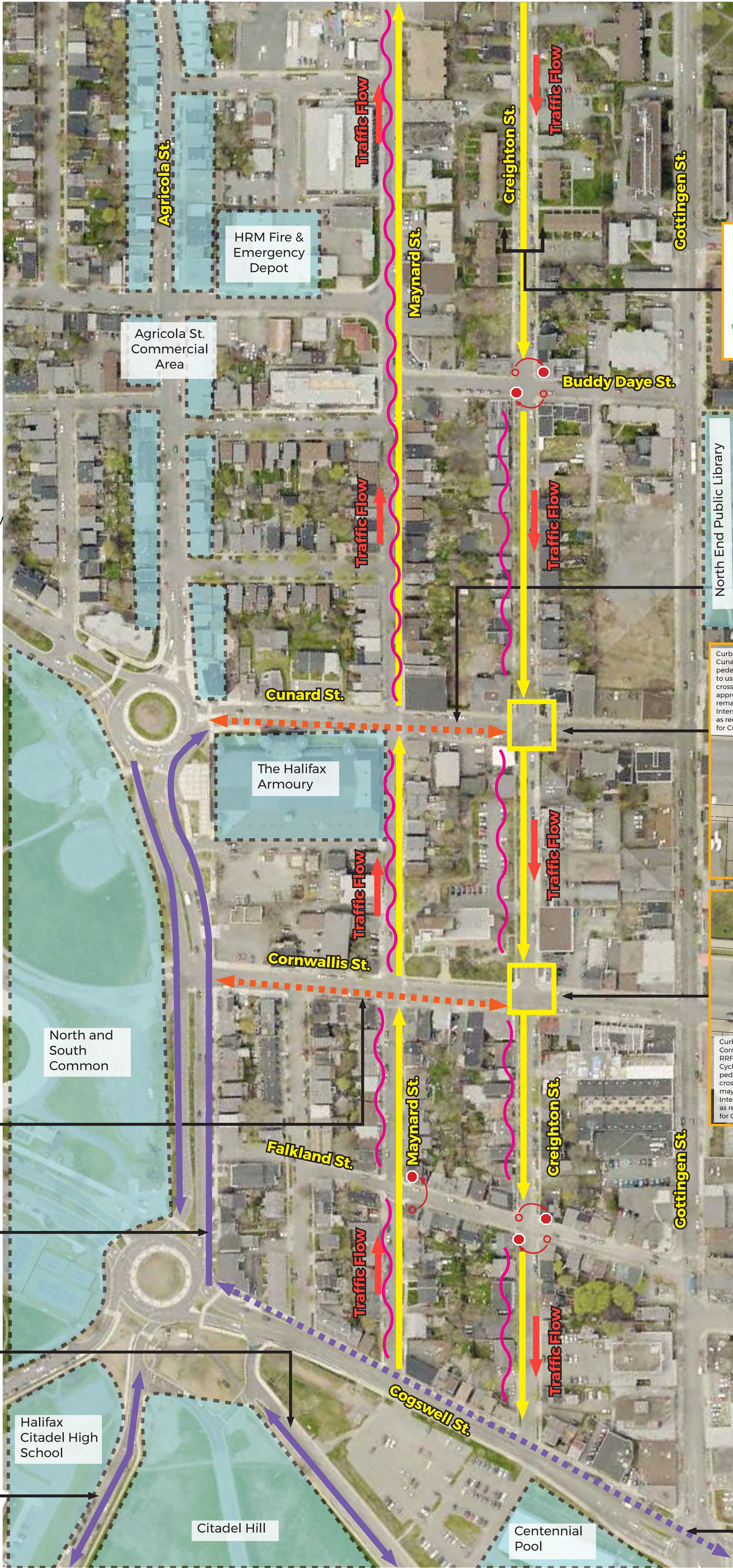
- Improved bicycle flow on Creighton St. and Maynard St. through stop sign reversal. Improved safety and convenience for crossing major intersections.
- Shorter pedestrian crossings with curb extensions.
- Reduced speeds from traffic calming measures.
- No impact.
- No impact.
- Traffic calming measures to be implemented along Creighton St. and Maynard St.

See Cunard St. vs. Cornwallis St. Board

Existing bicycle facility on North Park (painted uni-directional bike lanes)

Existing bicycle facility on Rainnie Dr. (protected, bi-directional bikeway)

Current project: Ahern Ave. (bi-directional bike path)



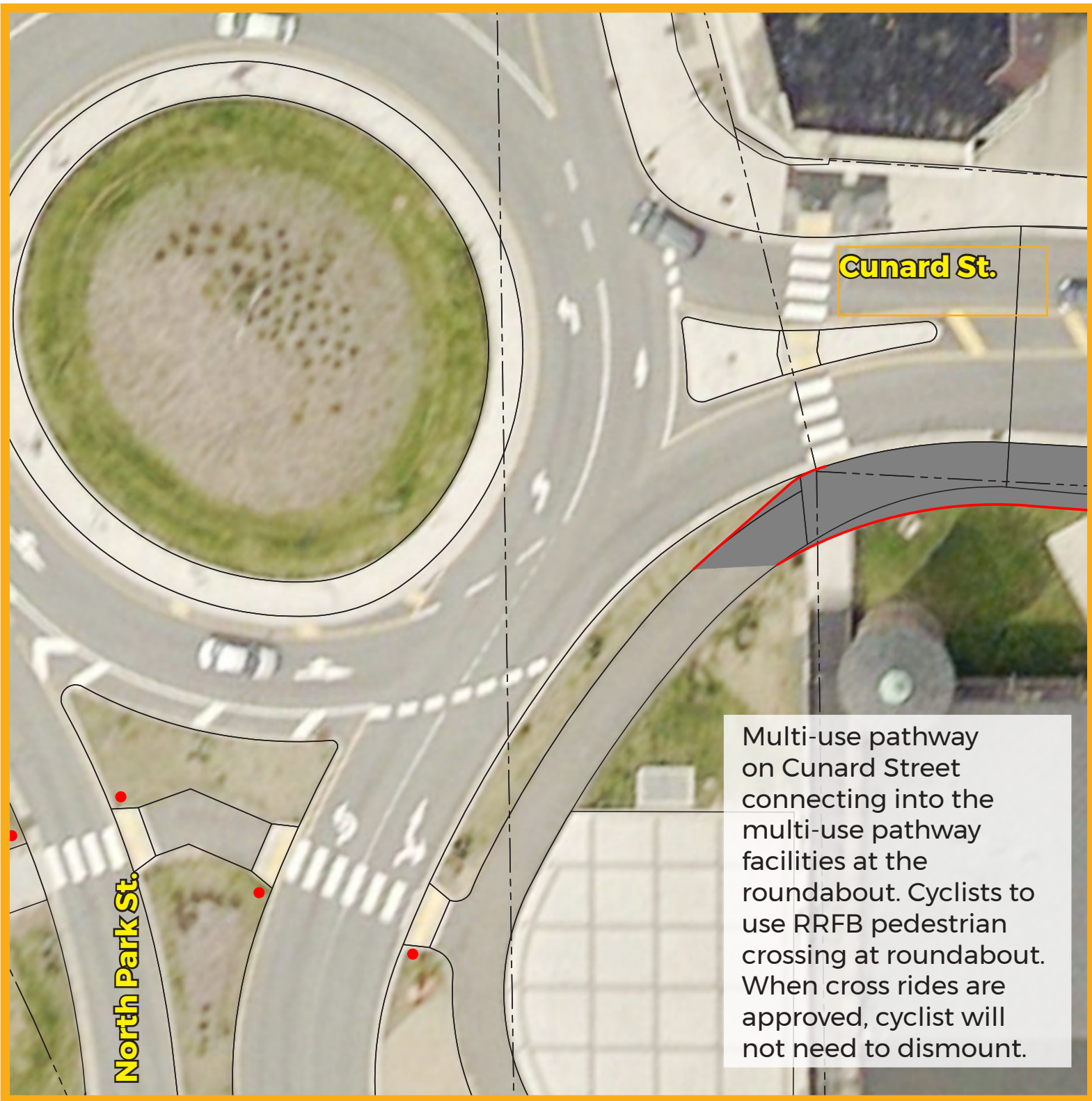
See Cunard St. vs. Cornwallis St. Board

Future project: Cogswell AT Greenway



# NORTH END BIKEWAY: CONNECTION TO THE COMMONS

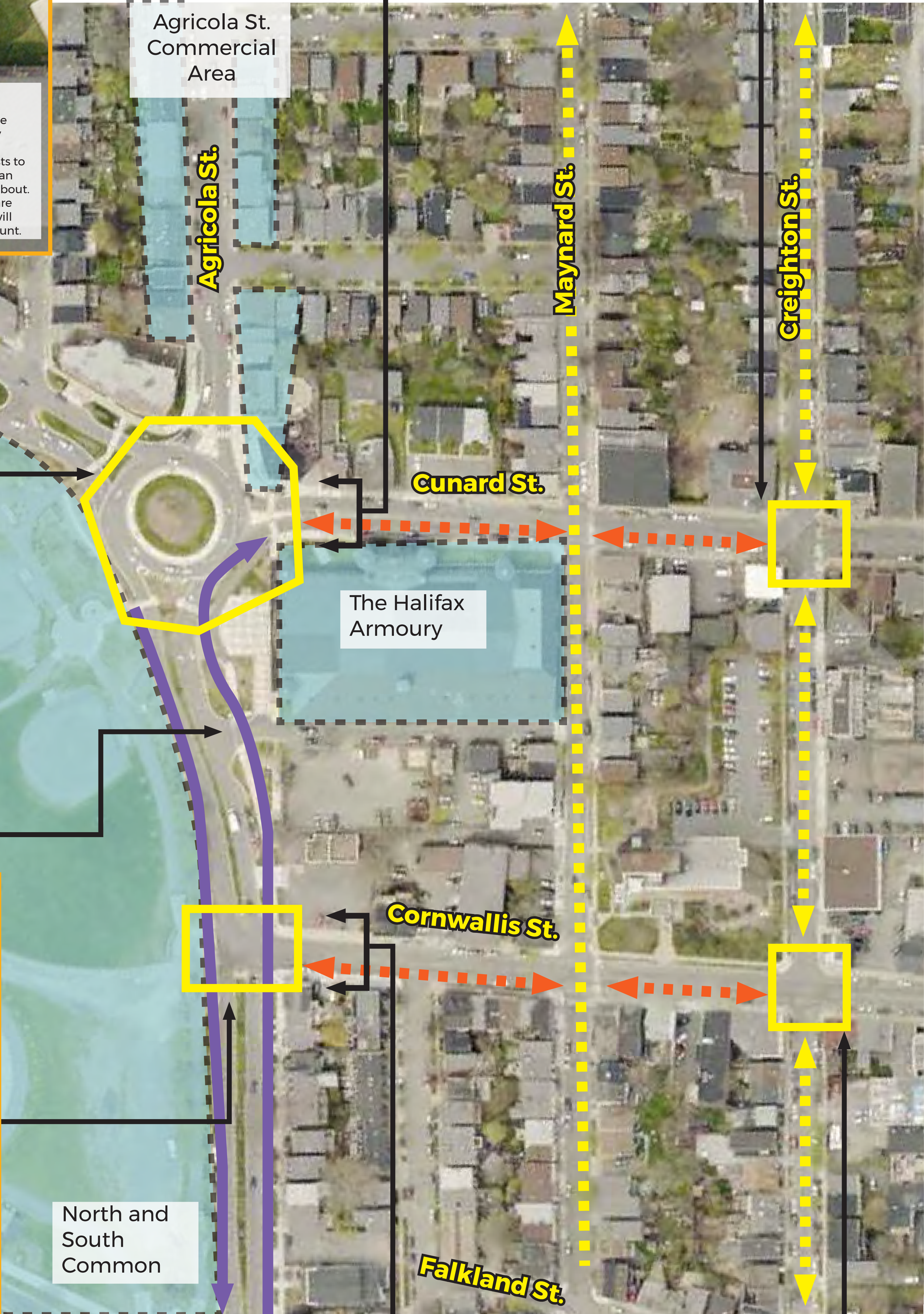
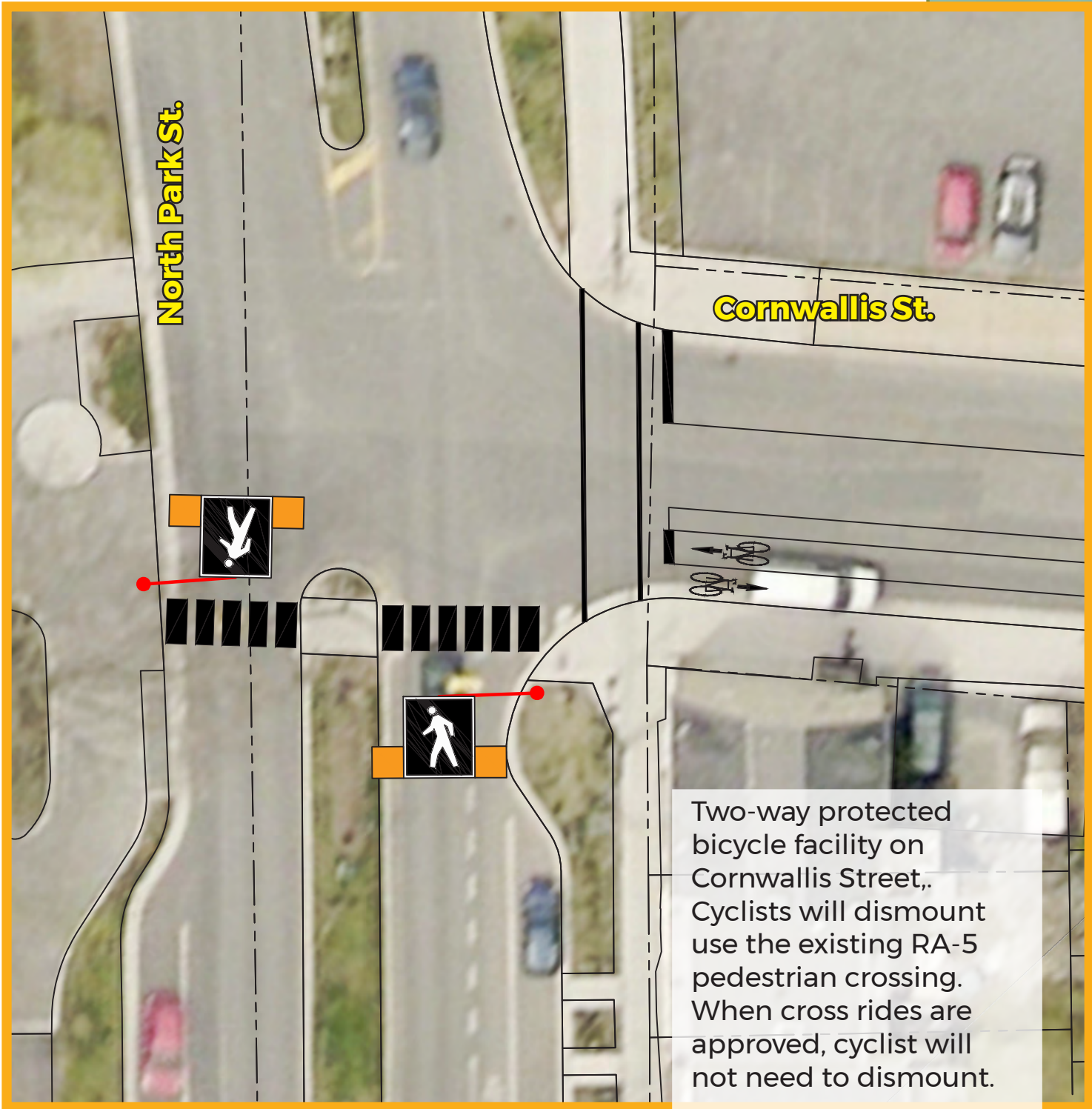
## OPTION 1: CUNARD STREET



The design option at the intersection of Cunard Street, as a multi-use pathway, with Creighton Street and/or Maynard Street will be designed according to the route options selected.

## OPTION 2: CORNWALLIS STREET

Existing bicycle facility on North Park (painted uni-directional bike lanes)



The design option at the intersection of Cornwallis Street, as a two-way protected bicycle facility, with Creighton Street and/or Maynard Street will be designed according to the route options selected.

### LEGEND



Future or existing bicycle facility

Bicycle connection option

Bike Flow via Local Street Bikeway Facility